

**CIHM  
Microfiche  
Series  
(Monographs)**

**ICMH  
Collection de  
microfiches  
(monographies)**



Canadian Institute for Historical Microreproductions/Institut canadien de microreproductions historiques

**© 2000**

The  
copy  
may  
the  
sign  
chee



This  
Ce d

10x



## Technical and Bibliographic Notes / Notes techniques et bibliographiques

The Institute has attempted to obtain the best original copy available for filming. Features of this copy which may be bibliographically unique, which may alter any of the images in the reproduction, or which may significantly change the usual method of filming are checked below.

- Coloured covers / Couverture de couleur
- Covers damaged / Couverture endommagée
- Covers restored and/or laminated / Couverture restaurée et/ou pelliculée
- Cover title missing / Le titre de couverture manque
- Coloured maps / Cartes géographiques en couleur
- Coloured ink (i.e. other than blue or black) / Encre de couleur (i.e. autre que bleue ou noire)
- Coloured plates and/or illustrations / Planches et/ou illustrations en couleur
- Bound with other material / Relié avec d'autres documents
- Only edition available / Seule édition disponible
- Tight binding may cause shadows or distortion along interior margin / La reliure serrée peut causer de l'ombre ou de la distorsion le long de la marge intérieure.
- Blank leaves added during restorations may appear within the text. Whenever possible, these have been omitted from filming / Il se peut que certaines pages blanches ajoutées lors d'une restauration apparaissent dans le texte, mais, lorsque cela était possible, ces pages n'ont pas été filmées.
- Additional comments / Commentaires supplémentaires:

L'Institut a microfilmé le meilleur exemplaire qu'il lui a été possible de se procurer. Les détails de cet exemplaire qui sont peut-être uniques du point de vue bibliographique, qui peuvent modifier une image reproduite, ou qui peuvent exiger une modification dans la méthode normale de filmage sont indiqués ci-dessous.

- Coloured pages / Pages de couleur
- Pages damaged / Pages endommagées
- Pages restored and/or laminated / Pages restaurées et/ou pelliculées
- Pages discoloured, stained or foxed / Pages décolorées, tachetées ou piquées
- Pages detached / Pages détachées
- Showthrough / Transparence
- Quality of print varies / Qualité inégale de l'impression
- Includes supplementary material / Comprend du matériel supplémentaire
- Pages wholly or partially obscured by errata slips, tissues, etc., have been refilmed to ensure the best possible image / Les pages totalement ou partiellement obscurcies par un feuillet d'errata, une pelure, etc., ont été filmées à nouveau de façon à obtenir la meilleure image possible.
- Opposing pages with varying colouration or discolourations are filmed twice to ensure the best possible image / Les pages s'opposant ayant des colorations variables ou des décolorations sont filmées deux fois afin d'obtenir la meilleure image possible.

This item is filmed at the reduction ratio checked below /  
Ce document est filmé au taux de réduction indiqué ci-dessous.

	10x		14x		18x		22x		26x		30x	
								✓				
	12x		16x		20x		24x		28x		32x	

The copy filmed here has been reproduced thanks to the generosity of:

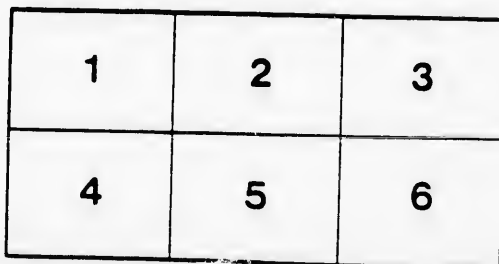
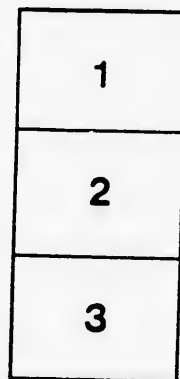
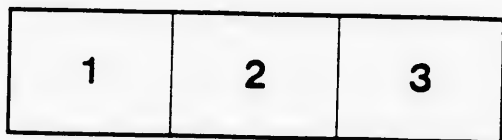
Montreal Museum of Fine Arts  
Library

The images appearing here are the best quality possible considering the condition and legibility of the original copy and in keeping with the filming contract specifications.

Original copies in printed paper covers are filmed beginning with the front cover and ending on the last page with a printed or illustrated impression, or the back cover when appropriate. All other original copies are filmed beginning on the first page with a printed or illustrated impression, and ending on the last page with a printed or illustrated impression.

The last recorded frame on each microfiche shall contain the symbol  $\rightarrow$  (meaning "CONTINUED"), or the symbol  $\nabla$  (meaning "END"), whichever applies.

Maps, plates, charts, etc., may be filmed at different reduction ratios. Those too large to be entirely included in one exposure are filmed beginning in the upper left hand corner, left to right and top to bottom, as many frames as required. The following diagrams illustrate the method:



L'exemplaire filmé fut reproduit grâce à la générosité de:

Musée des Beaux-Arts de Montréal  
Bibliothèque

Les images suivantes ont été reproduites avec le plus grand soin, compte tenu de la condition et de la netteté de l'exemplaire filmé, et en conformité avec les conditions du contrat de filmage.

Les exemplaires originaux dont la couverture en papier est imprimée sont filmés en commençant par le premier plat et en terminant soit par la dernière page qui comporte une empreinte d'impression ou d'illustration, soit par le second plat, selon le cas. Tous les autres exemplaires originaux sont filmés en commençant par la première page qui comporte une empreinte d'impression ou d'illustration et en terminant par la dernière page qui comporte une telle empreinte.

Un des symboles suivants apparaîtra sur la dernière image de chaque microfiche, selon le cas: le symbole  $\rightarrow$  signifie "A SUIVRE", le symbole  $\nabla$  signifie "FIN".

Les cartes, planches, tableaux, etc., peuvent être filmés à des taux de réduction différents. Lorsque le document est trop grand pour être reproduit en un seul cliché, il est filmé à partir de l'angle supérieur gauche, de gauche à droite, et de haut en bas, en prenant le nombre d'images nécessaire. Les diagrammes suivants illustrent la méthode.

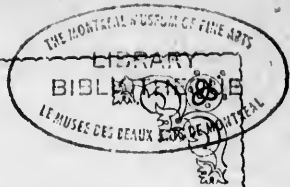
# MICROCOPY RESOLUTION TEST CHART

(ANSI and ISO TEST CHART No. 2)



APPLIED IMAGE Inc

1655 East Main Street  
Rochester, New York 14609 USA  
(716) 482-0300 Phone  
(716) 288-5989 Fax



ART ASSOCIATION:

GALLERY, PHILLIP'S SQUARE.

---

CATALOGUE

OF THE

GIBB BEQUEST,

AND A SPECIAL

LOAN COLLECTION OF PICTURES,

OPEN ON THE OCCASION OF THE

DOMINION EXHIBITION,

MONTREAL, SEPT., 1880.

---

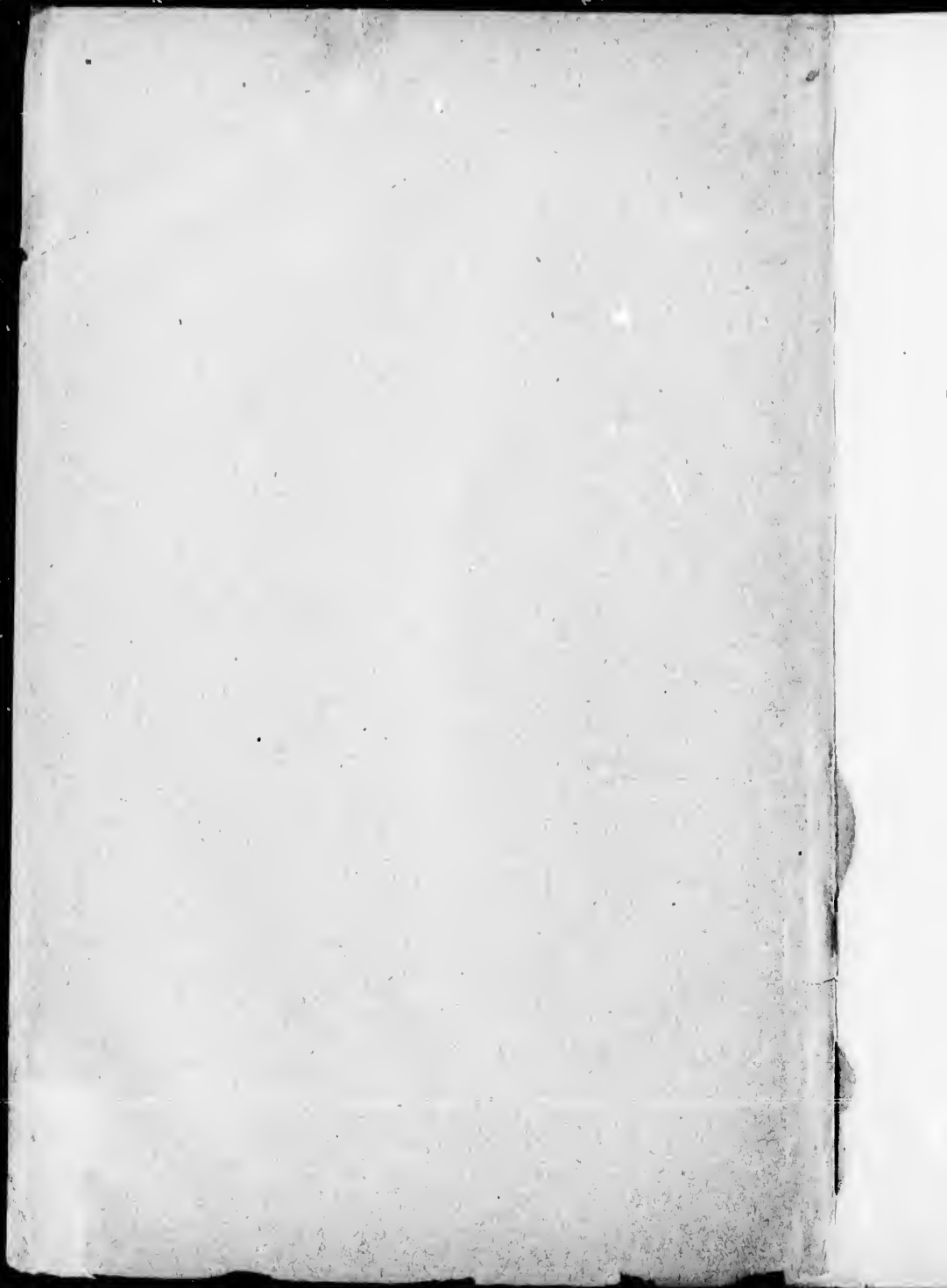
Montreal:

LOUIS PERRAULT & Co., PRINTERS,

87, ST. JAMES STREET.

1880





ART ASSOCIATION:

GALLERY, PHILLIP'S SQUARE.

---

CATALOGUE

OF THE

GIBB BEQUEST,

AND A SPECIAL

LOAN COLLECTION OF PICTURES,

OPEN ON THE OCCASION OF THE

DOMINION EXHIBITION,

MONTREAL, SEPT., 1880.

---

Montreal:

LOUIS PERRAULT & Co., PRINTERS,

87, ST. JAMES STREET.

1880

- 1.
- 2.
- 3.
- 4.
- 5.
- 6.
- 7.
- 8.
- 9.
- 10.
- 11.



# ART ASSOCIATION OF MONTREAL.

## THE GIBB COLLECTION.

*Bequeathed to the City of Montreal represented by the Art Association.*

- |  |         |                 |
|--|---------|-----------------|
| 1. STOLEN PLEASURE - - - -   | 15 x 12 | E. NOTERMAN     |
| 2. THE COURTSHIP - - - -   | 12 x 14 | C. J. GRIPS     |
| 3. MARKET SCENE IN ANTWERP,<br>(Moonlight.) }  | 40 x 49 | P. VAN-SCHENDEL |
| 4. WILD FLOWERS - - - -  | 19 x 15 | B. WEISER       |
| 5. CARD PLAYERS - - - -  | 23 x 27 | C. DE FYLDER    |
| 6. ENVIRONS OF ANTWERP,<br>Sunday Afternoon }  | 36 x 27 | F. CRABEELS     |
| 7. VIEW ON THE THAMES - - -  | 43 x 27 | J. TENNANT      |
| 8. VIEW NEAR HAARLEM, (Holland)  | 51 x 33 | W. VESTER       |
| 9. JOSEPH AND THE VIRGIN MARY,<br>(the central figures in Van-Schen-<br>del's picture of the "Adoration of<br>the Shepherds,") } | 37 x 29 | P. VAN-SCHENDEL |
| 10. THE CONFIDANT - - - -  | 41 x 23 | F. VERHEYDEN    |
| 11. LAKE COMO, (Italy) - - - -   | 65 x 43 | S. R. PERCY     |

12. THE LLYN IDWALL, N. WALES, (Sunset) }	71 x 36	S. R. PERCY	34. S
13. THE STUDIO OF JEAN BREUGHEL,	41 x 36	F. KRAMER	35. L
14. SEAPORT OF CALAIS - -	51 x 31	F. MUSIN	36. G
15. CORDOVA, (Palace of the Moorish Kings)	52 x 31	F. BOSSUET	37. P
16. BLIND MAN'S BUFF, - -	26 x 32	F. DE HEUVEL	38. A
17. MOZART PLAYING BEFORE THE PRINCE DE CONDÉ }	39 x 29	A. PINELLI	39. D
18. SHEEP - - - - -	8 x 10	F. VANSEVERDONCK	40. T
19. PARENTAL ALARM ; - - -	10 x 8	HENRIETTE RONNER	41. A
20. PIGEONS - - -	8 x 18	F. VANSEVERDONCK	42. S
21. A ZEELAND LADY - - -	36 x 29	E. NOTERMAN	43. T
22. A GOSSIP AT THE SPRING -	46 x 36	E. J. COBBETT	44. G
23. THE OLD TOWN of HOORNE, (Holland)	56 x 24	W. KOEKKOEK	45. T
24. EHRENBREITSTEIN (on the Rhine,	51 x 31	J. WEBB	46. S
25. A VILLAGE FAIR IN KENT - -	49 x 36	G. A. WILLIAMS	47. A
26. MOUNTAIN SHEEP - - - -	51 x 21	J. C. MORRIS	48. C
27. SHEEP AND GOAT - - - -	47 x 33	E. VERBOECKHOVEN	49. M
28. WINTER SCENE IN HOLLAND -	50 x 33	W. VESTER	50. T
29. LAKE WALLENSTADT - - -	61 x 40	J. BÜTLER	51. A
30. A VILLAGE MARKET' - - -	20 x 16	F. DE BRACKELEN	52. F
31. LAKE OF ZUG, (Switzerland) -	60 x 40	E. A. E. NYHOFF	
32. FLEUR DE LIS - - - -	18 x 24	J. H. S. MANN	
33. CATTLE RETURNING from PASTURE	96 x 62	T. A. VERWEI	

34. SEAPORT OF VEERE (Dutch Naval Arsenal) } 57 x 38 J. A. RUST
35. LAKE OF FOUR CANTONS 61 x 41 J. BÜTLER
36. GRINDENWALD AND THE WETTERHORN } 51 x 32 J. BÜTLER
37. PREPARING TO DECORATE THE CHURCH } 50 x 38 J. H. HEYERMANS
38. A WAYSIDE INN IN FLANDERS 51 x 40 W. VERSCHAUR
39. DUTCH TRADER TOWING A FISHING BOAT OFF DOVER } 31 x 50 H. K. TAYLOR
40. THE LLYG AT THE FOOT OF MOEL SABOD, SNOWDON IN THE DISTANCE } 49 x 35 S. R. PERCY
41. A VILLAGE MARKET SHOP - - 30 x 24 J. E. MASUREL
42. ST. MATTHIAS CHURCH, (Trevos) 33 x 21 G. STANFIELD
43. THE VILLAGE OF FLUELLEN (Lake Lucerne) } 48 x 29 F. ROFFIAEN
44. GRANDMA'S PANCAKES - - 22 x 23 H. SALENTIN
45. THE SCHOOL MISTRESS' FÊTE DAY 44 x 36 F. VERHEYDEN
46. SURREY WOODLAND, (Autumn) - 66 x 43 F. W. HULME
47. A PINCH OF SNUFF - - - 42 x 43 F. VERHEYDEN
48. CATHEDRAL INTERIOR - - 22 x 27 GENISSON
49. MOUNT PILATE, (Lake Lucerne) - 49 x 33 F. ROFFIAEN
50. THE VILLAGE OF BEILSTEIN ON THE MOSELLE } 33 x 21 G. STANFIELD
51. A GOOD TIME. [Skating in Holland] 24 x 20 F. DE BRACKELEER
52. EXPECTATION - - - 19 x 15 B. WEISER

53. THE NECKLACE - - - - 12 x 10 F. MOORMANS
- 54 THE NURSE - - - - - 13 x 11 C. GRIPS
55. "TÊTE A-TÊTE" - - - - - 11 x 10 A. F. HEYLIGERS
56. POMERANIAN DOG - - - - - 16 x 11 HENRIETTE RONNER
57. THE MOTHER - - - - - 11 x 12 C. J. GRIPS
58. ILLAGE POLITICIAN - - - - - 10 x 11 F. DE BRACKELEN
59. HIS PORTRAIT - - - - - 25 x 21 H. SALENTIN
60. MESMERISING - - - - - 24 x 10 C. VENNEMAN
61. ON THE SHORE OF LAKE } 24 x 18 { F. FOURMOIS and  
LUCERNE } { E. TSCHAGGENY
62. HAWKING, - - - - - WAGNER
63. THE SMOKER.
64. THE DRINKER.
65. HOLY FAMILY, copy from Andrea del Sarto by PETRINI.
66. THE VIRGIN AND CHILD, with St. John and St. Francis, Copy from  
Andrea del Sarto, by PETRINI.
67. CAPUCHIN MONKS AT PRAYER, copy from CHIARI.
68. BURIAL OF A CAPUCHIN MONK, copy from CHIARI.
69. MARINE VIEW, copy from CLAUDE.
70. LANDSCAPE, copy from SALVATOR ROSA.
71. LA SAINTE VIERGE AU CHARDONNERET, copy from RAPHAEL.
72. MADONNA DELLA SEGGIOLA, copy from RAPHAEL.

BRONZES—FORMING PART OF THE GIBB BEQUEST.

73. ÆNEAS CARRYING HIS FATHER FROM } F. BARBÉDIENNE  
THE DESTRUCTION OF TROY } FOUNDER.
74. CLEOPATRA, by J. CLESINGER - - - F. BARBÉDIENNE  
FOUNDER.
75. ORESTES AND IPHIGENIA, by GREGOIRE - - - TIEVANT  
FOUNDER.
76. ELIEZAR AND REBECCA, by GUILLEMIN - - - TIEVANT  
FOUNDER.



PICTURES—THE PROPERTY OF THE ASSOCIATION.

77. SCENE IN THE THOUSAND ISLANDS - - - - O. R. JACOBI  
TORONTO.

78. VIEW IN CORSICA - - - - C. J. WAY  
LUCERNE.

79. HOLLYHOCKS - - - - J. FOWLER  
TORONTO.

80. PARLIAMENT BUILDINGS, (Ottawa) - - - - O. R. JACOBI

81. THE SACRAMENTO VALLEY (Sunset) - - - - A. BIERSTADT  
NEW YORK.

Presented by the ARTIST.

82. THE SPLÜGEN PASS, Tyrol - - - - O. J. JACOBI  
TORONTO.

Presented by Mr. JOHN McLENNAN, M. P.

83. COAST VIEW NEAR BLANKENBERG - - - - F. MUSIN  
PARIS.

Presented by Mr. JOHN HARRIS.

84. VIEW NEAR CALAIS - - - - F. MUSIN  
PARIS.

Presented by Mr. JOHN HARRIS.

85. HORSE AT STABLE DOOR - - - - E. VERBOECKHOVEN

Presented by Mr. JOHN HARRIS.

86. FISHING SMACK OFF FRENCH COAST - - G. W. NICHOLSON

Presented by Mr. JOHN HARRIS.

87. SUMMER IN THE WOOD AT BURNHAM - - A. McCALLUM  
LONDON.

Presented by Mr. R. B. ANGUS.

88. COMING SQUALL, CAPE ANN, Mass. - - - - G. H. SMILLIE  
NEW YORK.

Presented by Mr. W. C. SMILLIE.

---

CASTS FROM THE ORIGINALS,

*Presented by the Sculptor.*

89. THE SONG OF THE SHIRT - - - - MARSHALL WOOD

90. HEBE - - - - MARSHALL WOOD

91. HEBE (bust) - - - - MARSHALL WOOD

COBI  
TO.  
WAY  
ERNE,  
VLER  
NTO.  
COBI  
TADT  
ORK.  
COBI  
NTO.  
USIN  
ARIS.  
USIN  
ARIS.  
OVEN  
LSON  
LUM  
N.  
ILLIE  
ORK.  
WOOD  
WOOD  
WOOD

## LOAN COLLECTION.

### OIL PAINTINGS.

Pictures marked with an asterisk \* are for sale. The Secretary will give information as to price, &c., on application.

- 
- |                                    |         |                         |
|------------------------------------|---------|-------------------------|
| 100. NEW YORK HARBOUR IN WINTER    | - - - - | E. MORAN.<br>NEW YORK.  |
| 101. A DISASTER—GOING TO MARKET    | - -     | C. H. POINGDESTRE       |
| 102. HEADS OF SHEEP                | - - - - | SCHENCK                 |
| 103. LANDSCAPE (Eastern Townships) | - - - - | A. F. BELLOWS           |
| 104. HOMEWARD BOUND                | - - - - | E. VAN MARCKE           |
| 105. A HIGHLAND FORAY              | - - - - | R. BEAVIS               |
| 106. VIEW IN WALES                 | - - - - | J. SYER                 |
| 107. ON THE CONNECTICUT RIVER      | - - - - | A. F. BELLOWS           |
| 108. THE HARBOUR OF CHRISTIANA     | - - - - | H. F. GUDE              |
| 109. THE MORNING BATH              | - - - - | W. P. BABCOCK<br>PARIS. |

110. WAKE UP	- - - - -	T. GERARD PARIS.
111. EVENING, ON THE THAMES	- -	BODDINGTON & SHALDERS LONDON.
112. ON THE CONWAY (Wales)	- - - - -	B. F. LEADER LONDON.
113. FOREST SCENE	- - - - -	A. F. BELLOWS NEW YORK.
114. HUNTING AT FONTAINEBLEAU	- - - - -	A. DE GESNE
115. A BREATH OF MORNING AIR	- - - - -	A. VOGT
116. THE OLD ARMOURER	- - - - -	K. J. LITSCHAUR
117. VIEW IN HOLLAND	- - - - -	G. W. NICHOLSON
118. RETURNING FROM THE PASTURE	- -	E. VAN MARCKE
119. BETWEEN TORCELLO AND VENICE	- - - - -	C. J. WAY
120. ON THE CONWAY (Wales)	- - - - -	B. F. LEADER LONDON.
121. IN THE GLOAMING	- - - - -	J. F. MILLET PARIS.
122. A WET DAY	- - - - -	C. PITTARA
123. VIEW ON THE RHINE	- - - - -	J. R. COLLINS LONDON.
124. MILKING TIME	- - - - -	E. VAN MARCKE
125. A WINTER SCENE (Canada)	- - - - -	C. KRIEGHOFF
126. THE BRIDAL CROWN	- - - - -	A. TIDEMAND
127. SUPPER TIME	- - - - -	C. KRIEGHOFF
128. A VISIGOTH WARRIOR	- - - - -	E. V. LUMINAIS

129. B
130. T
131. I
132. A
133. V
134. S
135. S
136. A
137. S
138. J
139. S
140. S
141. S
142. S
143. S
144. S
145. S
146. S



129. REST BY THE WAY - - - - - J. SANT, R. A.  
LONDON.
130. THE TOILET - - - - - V. CHEVILLARD.
131. LAKE MEMPHREMAGOG - - - - - A. F. BELLOWS
132. A COUNTRY ROAD (England) - - - - - J. E. MEADOWS  
LONDON.
133. VIEW NEAR COMPTON - - - - - A. F. BELLOWS
134. THE BIRD'S NEST - - - - - V. CHEVILLARD
135. SUNSET - - - - - O. R. JACOBI
136. A CANADIAN HOMESTEAD - - - - - C. KREIGHOFF
137. \*VIEW ON THE MISSISSIPPI RIVER } O. R. JACOBI & VOGT  
(Ottawa Valley) }
138. LAKE MEMPHREMAGOG FROM NEAR BOLTON - C. J. WAY  
LAUSANNE.
139. \*FRUIT - - - - - F. A. YERNER  
TORONTO.
140. BRINGING HOME THE LOST CHILD - - - - - A. F. BELLOWS
141. MADONNA AND CHILD - - - - - A. BLOEMART
142. PORTRAIT - - - - - WYATT EATON  
NEW YORK.
143. \*HOPE GATE (Quebec) - - - - - T. LEAMING  
PHILADELPHIA.
144. RAPIDS ABOVE THE SHEWANEGAN FALLS, R. S. DUNCANSON
145. A STUDY OF BEECHES AT BURNHAM - - - - - A. EDSON  
MONTREAL.
146. \*SIOUX TEEPEES (Sunset) - - - - - F. A. YERNER  
TORONTO.

147. "GOOD NIGHT" - - - - -	MRS. HARDING	166.
148. A STUDY - - - - -	Do	167.
149. "WHO RAN TO HELP" - - - - -	Do	168.
150. THE CONVALESCENT - - - - -	CONSTANT MAYER	169.
151. A STUDY - - - - -	MRS. HARDING	170.
152. GIPSY CAMP - - - - -	O. R. JACOBI	171.
153. LUMBER COVES, (near Quebec) - - - - -	C. KRIEGHOFF	172.
154. THE SURPRISE - - - - -	Do	173.
155. THE DEATH - - - - -	Do	174.
156. THE PATH THROUGH THE WOOD - - - - -	B. E. WARREN	175.
157. INTERESTING NEWS - - - - -	G. V. CODINA LOND. ON.	176.
158. PORTRAIT OF "TOM" MOORE - - - - -	J. JACKSON, R. A.	177.
159. SKETCH - - - - -	J. M. W. TURNER, R. A.	178.
160. FARM YARD - - - - -	J. F. HERRING	179.
161. WELSH PEASANTS - - - - -	W. SHAYER	180.
162. AUTUMN IN THE GREEN MOUNTAINS - - - - -	W. M. BROWN	
163. SUNSET IN THE CATSKILL - - - - -	E. SPANGLER	
164. CONSTANTINOPLE - - - - -	ZIEM	
165. EVENING ON THE MOORS - - - - -	O. R. JACOBI	

ARDING

Do

Do

MAYER

ARDING

JACOBI

GHOFF

Do

Do

ARREN

DDINA

ON.

, R. A.

, R. A.

RING

AYER

OWN

GLER

ZIEM

COBI

166. LANDSCAPE	- - - - -	VAN LUPPEN
167. LANDSCAPE	- - - - -	CALVERT
168. Do	- - - - -	Do
169. ON THE FRENCH COAST	- - - - -	L. DeBERG
170. ROLANDSECK	- - - - -	GAZATI
171. NEAR TREVES, (Sunset)	- - - - -	T. QUINAUX
172. SUNRISE, LANGDALE PIKES	- - - - -	C PETTTTT
173. PORTRAIT OF A MOOR (from life)	- - - - -	KIRKHOV
174. ST. ABBS' HEAD	- - - - -	W. A. KNELL
175. TYROLESE SHEPHERD BOY	- - - - -	JAHN EKENCES
176. HAY CARTING	- - - - -	A. de LEEUW
177. A FRENCH HARBOUR (High Water)	- - - - -	R. ATKINSON
177. LANDSCAPE	- - - - -	VAN LUPPEN
178. Do	- - - - -	Do
179. MENDING NETS	- - - - -	J. KING
180. A PORTRAIT	- - - - -	A. BOISSEAU





ERNER  
 GENNE  
 DS.  
 FOSTER  
 ON.  
 PIETTE  
 PARIS.  
 TAKER  
 PIETTE  
 J. WAY  
 SAUSANNE.  
 ERNER  
 ONTO.  
 LDERS  
 NDON.  
 ERNER  
 IAGHE  
 UMIER  
 HENNE  
 ERNER  
 WAY  
 LDERS  
 NIÈRE  
 TAKER  
 ERNER  
 WAY  
 ERNER  
 OGSON  
 ILLET  
 IS.  
 RACE  
 ASER

225. HARD TO MEND	- - - - -	H. G. GLINDONI
226. THE MORNING LESSON	- - - - -	R. RETTE
227. AUTUMN	- - - - -	W. H. MARSDEN
228. MURICH	- - - - -	E. ST. JOHN
229. ON THE RICHELIEU RIVER	- - - - -	C. J. WAY
230. A COUNTRY ROAD	- - - - -	W. REYNOLDS
231. THAMES BARGE OFF GREENHITHE	- - - - -	II. E. TOZER
232. PRINCE OF WALES & FAMILY, ORIGINAL SKETCH FOR ENGRAVED PICTURE	- - - - -	JOHN HAYTER
233. SKETCH IN THE HIGHLANDS	- - - - -	Do
234. LANDSCAPE	- - - - -	H. LeBAR
235. COMING STORM	- - - - -	ROBINSON
236. OLD MILL NEAR STAINES	- - - - -	W. REYNOLDS
237. BACKWATER ON THE THAMES	- - - - -	C. L. DAVIS
238. CICERO AT HIS VILLA	- - - - -	J. M. W. TURNER, R. A.
239. PLUTO CARRYING OFF PROSERPINE	- - - - -	Do
240. BEGGING SOLDIER	- - - - -	D. ORME, 1799
241. HEAD OF AN OLD MAN	- - - - -	Do
242. CALLA LILIES	- - - - -	R. GAGEN
243. PANORAMIC VIEW OF MONTREAL	- - - - -	C. J. WAY
244. ON THE CONNECTICUT RIVER	- - - - -	A. F. BELLOWS
245. MOUNT MANSFIELD, Green Mountain	- - - - -	C. J. WAY
246. STUDY OF PINES, VERMONT	- - - - -	Do
247. LANDSCAPE	- - - - -	O. R. JACOBI
248. IN THE BOLTON PASS	- - - - -	A. EDSON
249. BACK OF PERTH	- - - - -	O. R. JACOBI
250. IN THE BOLTON PASS	- - - - -	A. EDSON

251. LANDSCAPE	- - - - -	A. EDSON
252. NEAR PERTH	- - - - -	O. R. JACOBI
253. QUAIVES FARM	- - - - -	R. W. FRASER
254. VENICE	- - - - -	J. HARDY
255. FISHERMAN'S COTTAGE (Lake Geneva)	- - - - -	C. J. WAY
256. OLD BUILDINGS (Quebec)	- - - - -	F. A. VERNER
257. NEAR MÉTIS	- - - - -	MRS. B. J. HARRINGTON
258. HIGH PASTURES (Switzerland)	- - - - -	C. J. WAY
259. INDIAN CAMP	- - - - -	F. A. VERNER
260. SKETCH FROM MEMORY (The Queen, The Princess Louise, The Marquis of Lorne)	- - - - -	J. HAYTER
261. THE OLD MILL	- - - - -	J. BARBER
262. THE REAPERS	- - - - -	A. EDSON
263. ROCKS AND SEA	- - - - -	C. J. WAY
264. ST. MARK'S (Venice)	- - - - -	Do
265. HARVEST TIME	- - - - -	Do
266. PUMPKIN HARVEST	- - - - -	Do
267. SET OF SKETCHES	- - - - -	J. A. FRASER

---

### IN COUNCIL ROOM.

THE RAISING OF THE DAUGHTER OF JAIRUS - GABRIEL MAX

" This Painting, by one of the greatest living Masters of the Munich School, with its lofty realism, the startling effects of light and shade, and subdued pathos pervading the whole, will haunt the imagination of all who see it."

A. EDSON

R. JACOBI

F. FRASER

J. HARDY

C. J. WAY

VERNER

RINGTON

C. J. WAY

VERNER

HAYTER

BARBER

A. EDSON

C. J. WAY

Do

Do

Do

FRASER

EL MAX

ch School,

d subdued

e it."



The Art Association of Montreal,

1880.

Patrons :

His Excellency the Governor General and H. R. H. the Princess Louise.

President :

THE HON. MR. JUSTICE MACKAY.

Vice-President :

THE HON. THOMAS RYAN.

Treasurer :

MR. R. W. SHEPHERD.

Council :

MR. CHARLES GIBB  
MR. G. A. DRUMMOND  
MR. S. L. DAWSON  
MR. D. A. P. WALL  
DR. F. STERRY HUNT  
MR. R. WHITE

REV. DR. CORDNER.  
REV. CANON NORMAN  
MR. E. B. MATTHEWS.  
MR. WM. NORMAN  
MR. PETER REDPATH.  
MR. JOHN POPHAM.

Secretary and Curator :

MR. S. ENGLISH.

*Annual Subscription \$5.00 which entitles Subscribers to all the privileges of Membership.*





