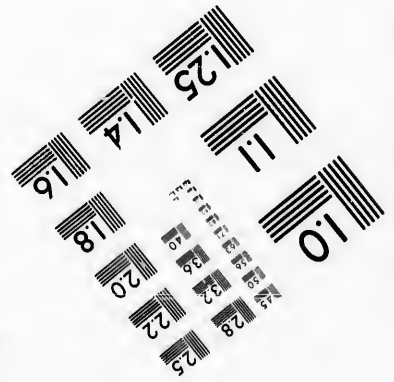
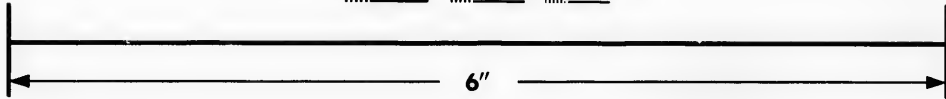
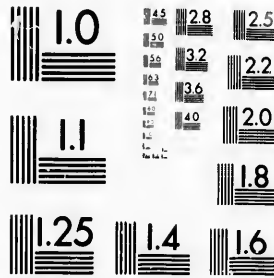


**IMAGE EVALUATION
TEST TARGET (MT-3)**



**Photographic
Sciences
Corporation**

23 WEST MAIN STREET
WEBSTER, N.Y. 14580
(716) 872-4503

**CIHM
Microfiche
Series
(Monographs)**

**ICMH
Collection de
microfiches
(monographies)**



Canadian Institute for Historical Microreproductions / Institut canadien de microreproductions historiques

© 1992

Technical and Bibliographic Notes / Notes techniques et bibliographiques

The Institute has attempted to obtain the best original copy available for filming. Features of this copy which may be bibliographically unique, which may alter any of the images in the reproduction, or which may significantly change the usual method of filming, are checked below.

L'Institut a microfilmé le meilleur exemplaire qu'il lui a été possible de se procurer. Les détails de cet exemplaire qui sont peut-être uniques du point de vue bibliographique, qui peuvent modifier une image reproduite, ou qui peuvent exiger une modification dans la méthode normale de filmage sont indiqués ci-dessous.

Coloured covers/
Couverture de couleur

Coloured pages/
Pages de couleur

Covers damaged/
Couverture endommagée

Pages damaged/
Pages endommagées

Covers restored and/or laminated/
Couverture restaurée et/ou pelliculée

Pages restored and/or laminated/
Pages restaurées et/ou pelliculées

Cover title missing/
Le titre de couverture manque

Pages discoloured, stained or foxed/
Pages décolorées, tachetées ou piquées

Coloured maps/
Cartes géographiques en couleur

Pages detached/
Pages détachées

Coloured ink (i.e. other than blue or black)/
Encre de couleur (i.e. autre que bleue ou noire)

Showthrough/
Transparence

Coloured plates and/or illustrations/
Planches et/ou illustrations en couleur

Quality of print varies/
Qualité inégale de l'impression

Bound with other material/
Relié avec d'autres documents

Continuous pagination/
Pagination continue

Tight binding may cause shadows or distortion along interior margin/
La reliure serrée peut causer de l'ombre ou de la distorsion le long de la marge intérieure

Includes index(es)/
Comprend un (des) index

Title on header taken from:/
Le titre de l'en-tête provient:

Blank leaves added during restoration may appear within the text. Whenever possible, these have been omitted from filming/
Il se peut que certaines pages blanches ajoutées lors d'une restauration apparaissent dans le texte, mais, lorsque cela était possible, ces pages n'ont pas été filmées.

Title page of issue/
Page de titre de la livraison

Caption of issue/
Titre de départ de la livraison

Masthead/
Générique (périodiques) de la livraison

Additional comments:/
Commentaires supplémentaires:

There are some creases in the middle of the pages. Copy has manuscript annotations.

This item is filmed at the reduction ratio checked below/
Ce document est filmé au taux de réduction indiqué ci-dessous.

10x	14x	18x	22x	26x	30x
<input type="checkbox"/>	<input type="checkbox"/>	<input type="checkbox"/>	<input checked="" type="checkbox"/>	<input type="checkbox"/>	<input type="checkbox"/>
12x	16x	20x	24x	28x	32x

The copy filmed here has been reproduced thanks to the generosity of:

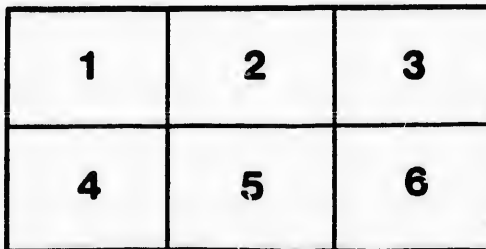
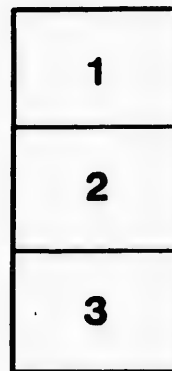
Manuscript Division,
National Archives of Canada

The images appearing here are the best quality possible considering the condition and legibility of the original copy and in keeping with the filming contract specifications.

Original copies in printed paper covers are filmed beginning with the front cover and ending on the last page with a printed or illustrated impression, or the back cover when appropriate. All other original copies are filmed beginning on the first page with a printed or illustrated impression, and ending on the last page with a printed or illustrated impression.

The last recorded frame on each microfiche shall contain the symbol \rightarrow (meaning "CONTINUED"), or the symbol ∇ (meaning "END"), whichever applies.

Maps, plates, charts, etc., may be filmed at different reduction ratios. Those too large to be entirely included in one exposure are filmed beginning in the upper left hand corner, left to right and top to bottom, as many frames as required. The following diagrams illustrate the method:



L'exemplaire filmé fut reproduit grâce à la générosité de:

Division des manuscrits,
Archives nationales du Canada

Les images suivantes ont été reproduites avec le plus grand soin, compte tenu de la condition et de la netteté de l'exemplaire filmé, et en conformité avec les conditions du contrat de filmage.

Les exemplaires originaux dont la couverture en papier est imprimée sont filmés en commençant par le premier plat et en terminant soit par la dernière page qui comporte une empreinte d'impression ou d'illustration, soit par le second plat, selon le cas. Tous les autres exemplaires originaux sont filmés en commençant par la première page qui comporte une empreinte d'impression ou d'illustration et en terminant par la dernière page qui comporte une telle empreinte.

Un des symboles suivants apparaîtra sur la dernière image de chaque microfiche, selon le cas: le symbole \rightarrow signifie "A SUIVRE", le symbole ∇ signifie "FIN".

Les cartes, planches, tableaux, etc., peuvent être filmés à des taux de réduction différents. Lorsque le document est trop grand pour être reproduit en un seul cliché, il est filmé à partir de l'angle supérieur gauche, de gauche à droite, et de haut en bas, en prenant le nombre d'images nécessaire. Les diagrammes suivants illustrent la méthode.

qu'il
cet
de vue
je
ation
nés

ript

32x

The Petition of *Christianne Buth* of the Town ship of *Tredwicksburgh* in the *Midland* District, Province of Upper Canada, humbly sheweth that your Petitioner is the daughter of *William Rumbough* of the Town ship of *Tredwicksburgh* in the *Midland* District, a U. E. LOYALIST, and the wife of *Jacob Buth* of the Town ship of *Tredwicksburgh* *German*

That your Petitioner *is* married and has never received any Land or order for Land from the Crown. Your Petitioner therefore prays that your *will be pleased to* grant unto her two hundred acres of the waste Lands of the Crown, and permit to be her Agent to locate the same, and to receive the Patent when completed. And as in duty bound will ever pray.

Christianne Buth
hu
mark

Midland District, }
april Sessions, }
 To wit.

Christianne Buth. Maketh oath and saith that she is the person she describes herself to be in the foregoing Petition: that she *is* married and has not heretofore received any Land or order for Land from the Crown.

Sworn in open Sessions before me this }
24th day of *april* 1833 }
M Macaulay

Christianne Buth
hu
mark

Midland District, }
april Sessions, }
 To wit.

William B. Silks Chairman. Maketh oath and saith that he was present and saw *Christianne Buth*. sign the foregoing Petition,—that she is the person she therein describes herself to be: that she *is* married, and has never received any Land or order for Land from the Crown, to the best of this Deponent's knowledge and belief.

Sworn in open Sessions before me }
 this *24th* day of *april* 18 }
M Macaulay

William B. Silks

Midland District, }
april Sessions, }
 To wit.

John Macaulay Esq Chairman, and *James Nicholls Junr* Clerk of the Peace, certify that *Christianne Buth* Personally appeared before the General Quarter Sessions of the Peace of the said District this day, and is recognized by the Magistrates to be the daughter of *William Rumbough* who retained his loyalty during the late war without suspicion of aiding or assisting the enemy: and that he has done his duty in defence of the Province during the late war.

Dated at the Court House in *Kingston* in the said District, this *Twenty fourth* day of *april* in the year of our Lord one thousand eight hundred and *Thirty three*

James Nicholls Junr
 Clerk of the Peace

M Macaulay
 Chairman
JMS

