

# THE GANANOQUE INN



THE CHAMPION OF CANADA

## THOUSAND ISLANDS

917.13704 G-12

# THE GANANOQUE INN

Open from 1st June  
to 15th September.

Special rates for large parties.

The Ideal Location for Conventions.

Telephone in every  
Room, with Fire  
Alarm connection

## RATE CARD

Connecting Rooms

105—107  
114—115  
117—118  
205—207  
213—214—215  
217—218  
219—220  
313 to 318  
319—320

SPECIFIC LETTER	ONE PERSON per day		TWO PERSONS One room, per dy		ONE PERSON per week		TWO PERSONS One room, per week	
	See plan, pages 14 and 15							
	Amer'n Plan	Europ'n Plan	Amer'n Plan	Europ'n Plan	American Plan	European Plan	American Plan	European Plan
<b>A</b> (Stone street north view.)	2.50	1.00	4.00	1.50	14.00	7.00	25.00	10.00
<b>B</b> (Facing landing west view.)	3.00	1.50	5.00	2.50	17.00	10.50	30.00	15.00
<b>C</b> (Facing Squaw Pt., south view.)	3.50	2.00	6.00	3.50	22.00	14.00	35.00	20.00
<b>D</b> Bath Rooms	4.00	2.50	7.00	4.50	25.00	17.50	40.00	25.00

Booklets, reservations and all information on application to

A. ARCH. WELSH, "The Inn," Gananoque, Ont.

ROBT. W. ROUGH, Manager.

917.13704

612

NOV 22 1974

102  
A FAVORITE CARAVANSARY SITUATED IN THE PRETTIEST LOCALITY  
OF THE THOUSAND ISLANDS OF THE ST. LAWRENCE RIVER

Canadian  
HISTORY

# *The Gananoque Inn*

## A SOCIAL CENTRE

Telephone in every room, with Fire Alarm attachment. Electric Light and Hot Water Heat.

Four full fronts—every room a front room, single and en suite, with bath. Tennis Court, Bowling Green, Bowling Alley and Billiards. . . . .

One block from the Post Office, handy to the principal churches, theatres and business district. The Steamer "Where Now" connects at Clayton, N. Y., for Gananoque. . . . .

NOTE—Do not get off train at the little Umbrella Station, but continue to MAIN STATION of T.I.R. and our palatial home is seen—just a minute's walk

LONG DISTANCE TELEPHONE  
G.N.W. AND C.P.R. TELEGRAPH

G A N A N O Q U E  
O N T A R I O

AUTOMOBILE GARAGE  
for storage in connection

REFERENCE

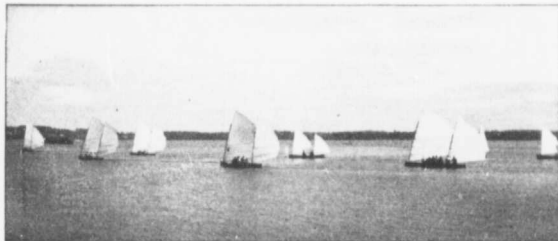
# THE GANANOQUE INN

---

A NEW HOTEL,—rebuilt and remodelled. Heavy brick walls, wide halls, parlors and verandas. Rooms large, airy, and commanding beautiful views, single and en suite, with bath. Lighted throughout by electricity. Telephone in every room, with fire alarm attachment. Public and private bath rooms on every floor. Sanitary plumbing and scientific heating. Long distance telephone, telegraph and post office.

## IN THE MOST DELIGHTFUL SPOT ON THE RIVER ST. LAWRENCE

The prevailing southwest winds which are dry and hot on the south side of the river, blow fresh over the water, and are always cool and invigorating here. Every requirement to add to your health and pleasure. Magnificent boating, excellent fishing and fine bathing.



Sailing races,  
opposite "The Inn."



## ANANOQUE

was famous as a health resort long before the white man settled there. Before the march of civilization reached the lake and river regions, the Indians of the upper Ontario lake territory, suffering with malarial diseases, were wont to tour in their canoes down the shores of the lake until they reached the St. Lawrence, passing the spot where Kingston now stands, finally halting at the point where the swift running and rock-riven Cadanoryhqua river joined its waters with the St. Lawrence.

The Indian name "Cadanoryhqua" was pronounced as if spelled "Gananoque," and translated means "Place of Health," or "Rocks seen under running water," the location relieving the red men of their malarial difficulties. The place was located by them as the "Place where the running water danced over the rocks."

The town has a population of about 5,000 and is noted for the number and variety of its manufactures. To the tourist, its chief interest lies in the fact that it is almost in the midst of the Thousand Islands and is easily accessible by rail and steamer from all points.

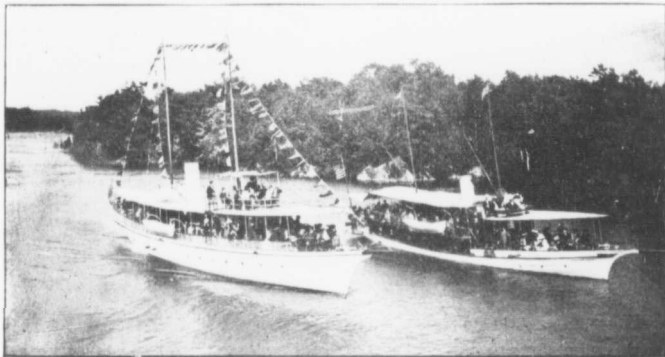




## THE GANANOQUE INN

affords excellent accommodation for tourists and fishermen. Upon leaving the dock at Gananoque one at once realizes that he is in the heart of the Thousand Islands. The Gananoque Inn has this year been renovated from top to bottom, refurnished and made more comfortable

even than in the past, and will cater to the requirements of the tourist and fisherman during the summer months.



Steam Yachts  
Among the  
Canadian  
Thousand  
Islands



## HARMING VIEWS.

Funnell's launch makes morning runs among the islands, and guests never tire of this magnificent trip.

An amusement hall for children is provided; also a bowling alley, billiard room, tennis court and bowling green for the older ones.

The American Canoe Association will hold its annual meet during August at Sugar Island, which is near the hotel. Canoe sports are held each day during the meet. Especially interesting are the war canoe races.

American Canoe  
Association's Camp





## SUMMER HOME.

It is the purpose of the management to conduct "The Inn" in a thoroughly homelike manner, having all the modern appointments and comforts, but avoiding useless display and extravagance. A quiet resting place which will appeal to the most fastidious, and where those who enjoy boating and fishing, or are in need of a vacation that will not be disturbed by too much effort to kill time by social gaieties,

can enjoy their summer rest. The house, the porches, the grounds, and the grand view of river and islands, with prevailing southwest breezes, insure comfort that cannot be found elsewhere. The weekly concerts by the Gananoque Citizens' Band, the weekly hop, and various other evening entertainments, afford an abundance of recreation.



Among the  
Canadian Islands,  
Lost Channel and  
Fiddler's Elbow.





## THE DINING HALL is the most pleasant in the Island district, commanding

as it does a river view from every window, and enabling one to sit at a table and see the steamers pass up and down the river.

So unvarying is the praise accorded it, that we feel free to say that the cuisine is without a peer for the price.

The kitchen is commodious, well lighted, and complete in every detail.

It is our aim to get the best the market affords—all poultry, eggs and vegetables coming in fresh every day; the celebrated Muskoka lamb is always used, also the best of Western beef, and the butter, milk and cream are obtained from a dairy of Ayrshires, while St. Lawrence fish is always on the menu.

Egg and milk dieting a specialty.

We desire to have everything that is supplied for the table of the purest quality, well cooked and served with absolute cleanliness, whether for one guest or five hundred.



THE GANANOQUE INN  
From the Water Front.



THE GANANOQUE INN  
From the Water Front.

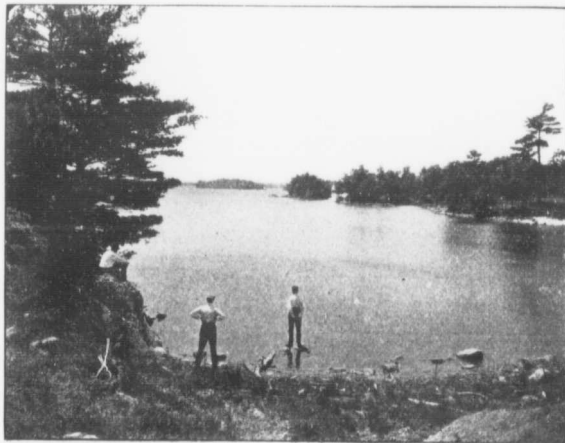
THIS ILLUSTRATION GIVES AN IDEA OF THE GANANOQUE INN, AND THE BEAUTIES THAT SURROUND IT. THE STEAMER WHICH HAS JUST LEFT THE INN WHARF IS ONE THAT MAKES WHAT IS CALLED "DAILY RAMBLES" THROUGH THE ISLANDS, AND A MOST ENJOYABLE TRIP IT IS. THE CONSENSUS OF OPINION OF THOSE WHO HAVE BEEN THROUGH THE CHANNELS IN THE THOUSAND ISLANDS ON THE CANADIAN SIDE IS, THAT IT IS THE MOST BEAUTIFUL PART OF THIS WELL KNOWN TERRITORY, AND A TRIP TAKEN THROUGH THAT PORTION OF THIS FAMOUS RESORT IS ONE NEVER TO BE FORGOTTEN.



## FISHING AMONG THE THOUSAND ISLANDS.

The Thousand Islands may well be called "The Angler's Paradise," for we cannot imagine a more exhilarating pleasure than to sit in a St. Lawrence skiff, which

is a marvel of beauty and comfort, and handled by its owner is as safe in the heaviest sea as a rocking chair in a drawing room—drifting and threading your way around picturesque points, through intricate channels, to beautiful bays, in which the clearness of the water would shame a crystal.



Looking from  
Stave Island.



## N ANGLER'S PARADISE.

(cooked by the guide) is a feast never to be forgotten. In the St. Lawrence are found the maskinonge, the black bass, the pickerel, and almost all of the other varieties of less gamey fresh water fish, such as the wall-eyed pike, the perch, rock bass, etc. Skilled fishermen, with elegant boats, complete fishing outfit, bait, etc., may

be hired by the day or week.

The boat livery connected with the house is stocked with St. Lawrence launches, skiffs, sail-boats, canoes etc.

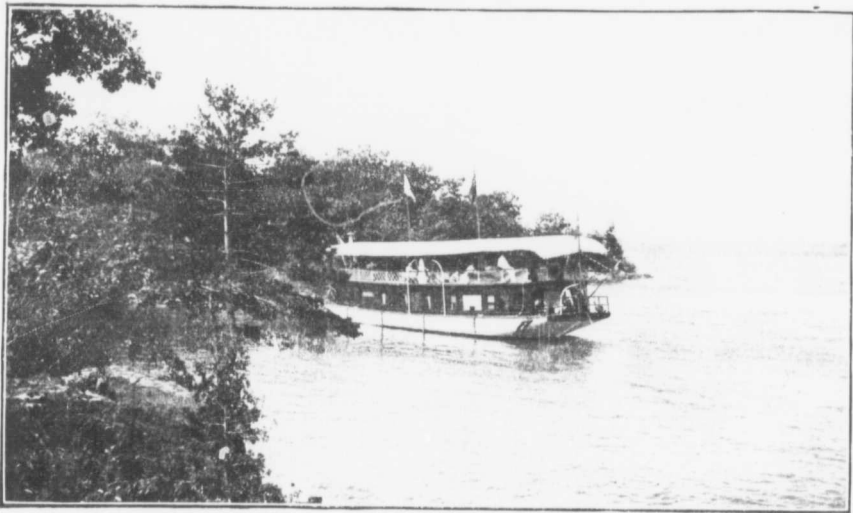


A Crown Land Fire-place

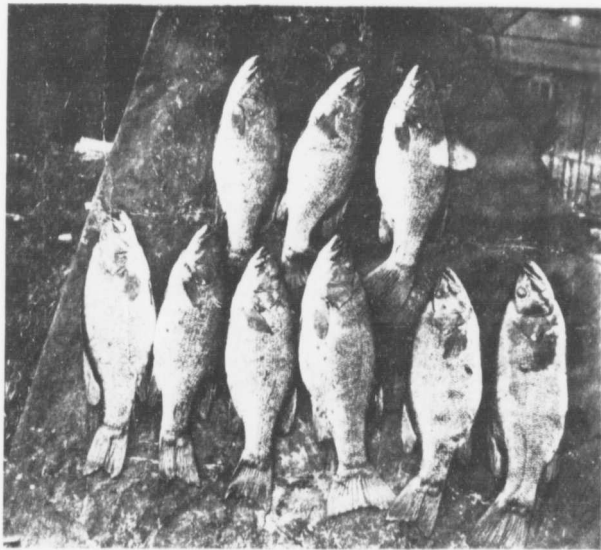
To partake of an island dinner



Indian Rock, Thousand Islands



House Boating among the Thousand Islands



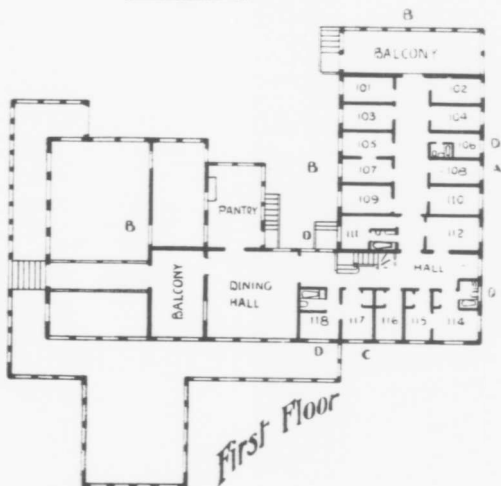
BLACK  
BASS—

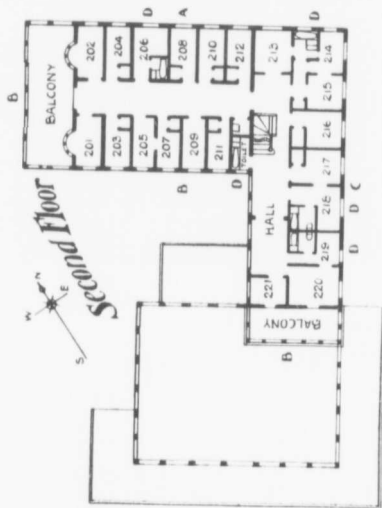
Nine that  
weighed 31  
pounds, all  
caught within  
two hours

# Floor Plans of The Gananoque Inn

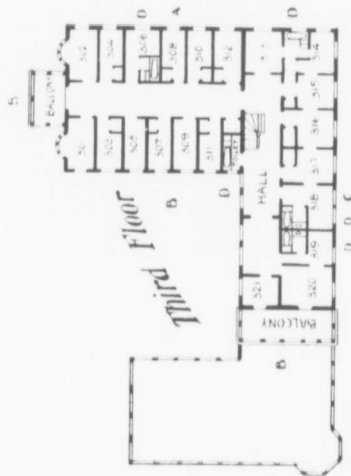
Thousand Islands, Gananoque, Ont.

RIVER FRONT





RIVER FRONT







## HOW TO REACH THE GANANOQUE INN

THE GRAND TRUNK RAILWAY SYSTEM has direct connection with Gananoque at Thousand Islands Junction with the Thousand Islands Railway, which runs into Gananoque a short distance from the Junction.

From points in the South, passengers reach the Grand Trunk Railway System either by way of Buffalo and Niagara Falls or by way of Detroit. From each of these points trains of the Grand Trunk convey passengers to Gananoque.

In the West, from Chicago and points in the Western States, passengers are carried over the main line of this great system by way of Port Huron and Toronto, passing through some of the principal cities of the United States and the western part of Ontario.

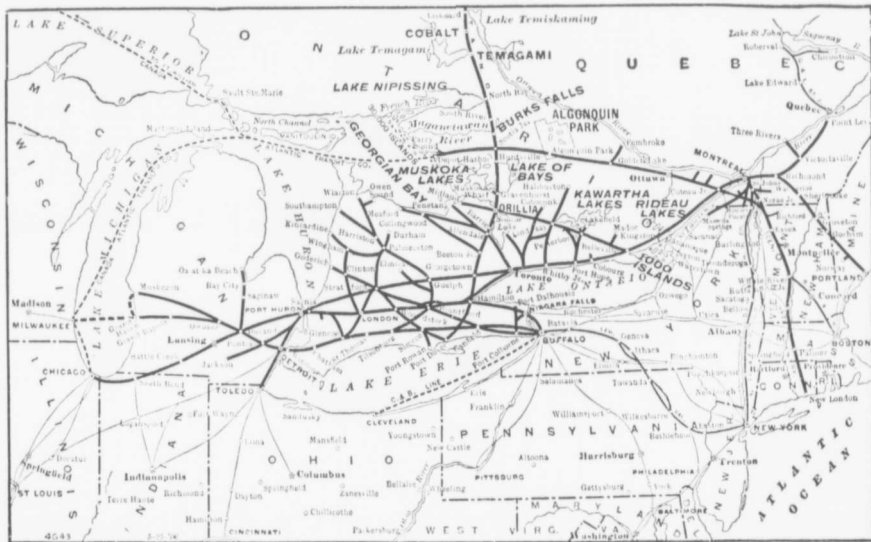
From Buffalo, trains are run over the Lehigh Valley and Grand Trunk via Toronto, crossing the Grand Trunk's single-arch double-track steel bridge over Niagara River.

Passengers from Eastern points, such as Quebec, Portland and intermediate stations, proceed via the main line of the Grand Trunk Railway System through Montreal, and those from Boston and all New England points by Boston & Maine, Central Vermont and other connecting lines through Montreal, and thence to Gananoque.

Tourists from the Maritime Provinces reach the Grand Trunk by the Intercolonial Railway, via Montreal, and proceed over the main line as above described.

From points in the East, south of Buffalo, including the States of New York, Pennsylvania, West Virginia, Maryland, etc., the route is by way of Niagara Falls, thence Grand Trunk Railway System.

Being in close proximity to the main line of the Grand Trunk Railway System, an admirable train service is offered patrons to and from this popular resort.



Canadian  
HISTORY



A. ARCH WELSH

PROPRIETOR