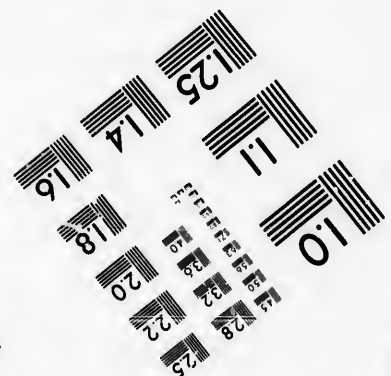
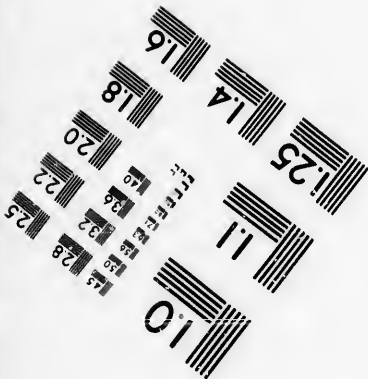
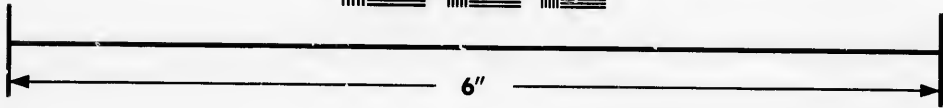
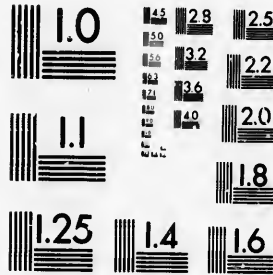
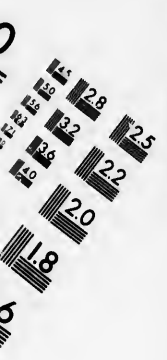


**IMAGE EVALUATION  
TEST TARGET (MT-3)**



**Photographic  
Sciences  
Corporation**

23 WEST MAIN STREET  
WEBSTER, N.Y. 14580  
(716) 872-4503



**CIHM/ICMH  
Microfiche  
Series.**

**CIHM/ICMH  
Collection de  
microfiches.**



**Canadian Institute for Historical Microreproductions / Institut canadien de microreproductions historiques**



**© 1986**

Technical and Bibliographic Notes/Notes techniques et bibliographiques

The Institute has attempted to obtain the best original copy available for filming. Features of this copy which may be bibliographically unique, which may alter any of the images in the reproduction, or which may significantly change the usual method of filming, are checked below.

L'institut a microfilmé le meilleur exemplaire qu'il lui a été possible de se procurer. Les détails de cet exemplaire qui sont peut-être uniques du point de vue bibliographique, qui peuvent modifier une image reproduite, ou qui peuvent exiger une modification dans la méthode normale de filmage sont indiqués ci-dessous.

- Coloured covers/  
Couverture de couleur
- Covers damaged/  
Couverture endommagée
- Covers restored and/or laminated/  
Couverture restaurée et/ou pelliculée
- Cover title missing/  
Le titre de couverture manque
- Coloured maps/  
Cartes géographiques en couleur
- Coloured ink (i.e. other than blue or black)/  
Encre de couleur (i.e. autre que bleue ou noire)
- Coloured plates and/or illustrations/  
Planches et/ou illustrations en couleur
- Bound with other material/  
Relié avec d'autres documents
- Tight binding may cause shadows or distortion along interior margin/  
La reliure serrée peut causer de l'ombre ou de la distorsion le long de la marge intérieure
- Blank leaves added during restoration may appear within the text. Whenever possible, these have been omitted from filming/  
Il se peut que certaines pages blanches ajoutées lors d'une restauration apparaissent dans le texte, mais, lorsque cela était possible, ces pages n'ont pas été filmées.
- Additional comments: [Printed ephemera] [4] p.  
Commentaires supplémentaires:

- Coloured pages/  
Pages de couleur
- Pages damaged/  
Pages endommagées
- Pages restored and/or laminated/  
Pages restaurées et/ou pelliculées
- Pages discoloured, stained or foxed/  
Pages décolorées, tachetées ou piquées
- Pages detached/  
Pages détachées
- Showthrough/  
Transparence
- Quality of print varies/  
Qualité inégale de l'impression
- Includes supplementary material/  
Comprend du matériel supplémentaire
- Only edition available/  
Seule édition disponible
- Pages wholly or partially obscured by errata slips, tissues, etc., have been refilmed to ensure the best possible image/  
Les pages totalement ou partiellement obscurcies par un feuillet d'errata, une pelure, etc., ont été filmées à nouveau de façon à obtenir la meilleure image possible.

This item is filmed at the reduction ratio checked below/  
Ce document est filmé au taux de réduction indiqué ci-dessous.

10X	12X	14X	16X	18X	20X	22X	24X	26X	28X	30X	32X
						✓					

The copy filmed here has been reproduced thanks to the generosity of:

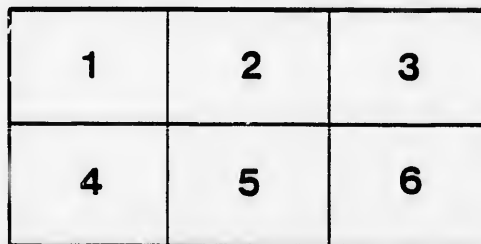
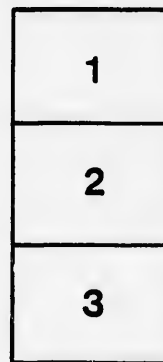
D. B. Weldon Library  
University of Western Ontario  
(Regional History Room)

The images appearing here are the best quality possible considering the condition and legibility of the original copy and in keeping with the filming contract specifications.

Original copies in printed paper covers are filmed beginning with the front cover and ending on the last page with a printed or illustrated impression, or the back cover when appropriate. All other original copies are filmed beginning on the first page with a printed or illustrated impression, and ending on the last page with a printed or illustrated impression.

The last recorded frame on each microfiche shall contain the symbol  $\rightarrow$  (meaning "CONTINUED"), or the symbol  $\nabla$  (meaning "END"), whichever applies.

Maps, plates, charts, etc., may be filmed at different reduction ratios. Those too large to be entirely included in one exposure are filmed beginning in the upper left hand corner, left to right end top to bottom, as many frames as required. The following diagrams illustrate the method:



L'exemplaire filmé fut reproduit grâce à la générosité de:

D. B. Weldon Library  
University of Western Ontario  
(Regional History Room)

Les images suivantes ont été reproduites avec le plus grand soin, compte tenu de la condition et de la netteté de l'exemplaire filmé, et en conformité avec les conditions du contrat de filmage.

Les exemplaires originaux dont la couverture en papier est imprimée sont filmés en commençant par le premier plat et en terminant soit par la dernière page qui comporte une empreinte d'impression ou d'illustration, soit par le second plat, selon le cas. Tous les autres exemplaires originaux sont filmés en commençant par la première page qui comporte une empreinte d'impression ou d'illustration et en terminant par la dernière page qui comporte une telle empreinte.

Un des symboles suivants apparaîtra sur la dernière image de chaque microfiche, selon le cas: le symbole  $\rightarrow$  signifie "A SUIVRE", le symbole  $\nabla$  signifie "FIN".

Les cartes, planches, tableaux, etc., peuvent être filmés à des taux de réduction différents. Lorsque le document est trop grand pour être reproduit en un seul cliché, il est filmé à partir de l'angle supérieur gauche, de gauche à droite, et de haut en bas, en prenant le nombre d'images nécessaire. Les diagrammes suivants illustrent la méthode.

errata  
to

pelure,  
n à

# Grand Opera House.

Saturday Matinee, 2nd March...  
....Monday Evening, 4th March.

\* \* \* \* \*

....Return and Farewell of Mr. Snazelle....  
IN TWO GRAND PROGRAMMES.



Mr. Percy T. Carroll  
begs to announce that  
he has made arrange-  
ments with

**MR. SNAZELLE**  
to give two more en-  
tertainments, before  
he leaves for England



On MR. SNAZELLE'S  
visit here a fortnight  
ago, the consensus of  
public opinion was that  
no more beautiful,  
unique or interesting  
entertainment had ever  
been given in this city.

If you will read the Programmes you will be there.

## Programme for Saturday's Matinee.

PIANO SOLO, **Fantasia from Airs from Operas of Martha,** *Flotow*  
**MR. CURT. PLATHO.**

Scenes wonderful and beautiful—among the art galleries of Europe, etc.

SONG, **"The Lighthouse Keeper,"** *Molloy*  
(With scene of Eddystone Lighthouse in a storm)  
**MR. SNAZELLE.**

RECITAL, **"The Leper,"** *N. P. Willis*  
(With incidental music by Sir Julius Benedict)

AND SCENIC EFFECT, "**Angels Ever Bright and Fair,**"  
(With the music by Handel, surpassing the "Rock of Ages")

PIANO SOLO (by desire), "**12th Rhapsody,**" *Liszt*  
MR. PLATHO.

(All Pianoforte pupils should hear this.)

OLD SONG, "**A Bandit's Life,**" *Hatton*  
MR. SNAZELLE.

ILLUSTRATED RECITAL, "**I Am Poor and Quite Unknown,**" *Dr. Mackay*  
MR. SNAZELLE.

In which the following scenes are shown :

"The Sunny Sky,"

"The Corn Field,"

"The Meadows,"

"The Streamlet,"

"The Mighty Ocean,"

Etc., etc., etc.

## INTERVAL

OVERTURE, "**2nd Mazurk,**" *Godard*

BUFFO SONG, "**Travellers All,**"—(Siege of Rochelle) *Balfe*  
MR. SNAZELLE.

(Which created such an impression on Mr. Snazelle's last visit)

THE YARN, "**The Whistler,**"—(by desire) *Snazelle*  
MR. SNAZELLE.

The couplets to **Burns' "Cotter's Saturday Night,"**  
With scenes and music.  
MR. SNAZELLE.

SCENES, "**Silent Fireworks,**"

PIANO SOLO, "**Moscow,**" *Tours*  
MR. PLATHO.

Concluding with

**GOUNOD'S GRAND SACRED SONG**

**"NAZARETH"**

With its 12 Magnificent Scenes.

# Programme for Monday Night, March 4th.

The First Part will consist of LORD TENNYSON'S  
beautiful and pathetic poem,

## “ ENOCH ARDEN ”

(TRUE TILL DEATH).

Illustrated by 30 Tableaux from Life-Models, as follows :



SCENE 1—Lord Tennyson.

2—The sea beach—Annie, Enoch and Philip.

SONG,                    **“My Sweetheart When a Boy,”**                    *Morgan*

3—Philip's mill.

4—Enoch and Annie's courtship.

5—Annie and her children.

6—Enoch parting with his old sea friend.

7—Enoch's farewell.

SONG,                    **“When I Beheld the Anchor Weighed,”**                    *Balfe*

8—“The rosy idol of her solitude, whilst Enoch was abroad on wrathful seas.” Enoch having been shipwrecked, and lived on an uninhabited island for ten years, and being supposed to be dead.

9—Philip's courtship.

10—Annie suddenly seizes the Bible and sets it wide to find a sign.

11—She consents to marry Philip.

12—Annie's dream of Enoch's death under a palm tree.

MUSIC,                    **“Hosanna in the Highest,”**

13—Enoch buying quaint monsters to take home to his children.

14—The wreck of Enoch's ship.

15—Rescued on a raft.

16—The death of his companion on the isle.

17—Enoch sights a sail.

18—Enoch's return to his native village.





