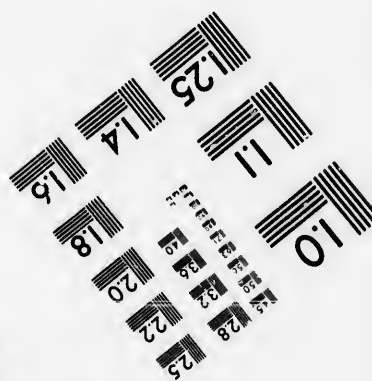
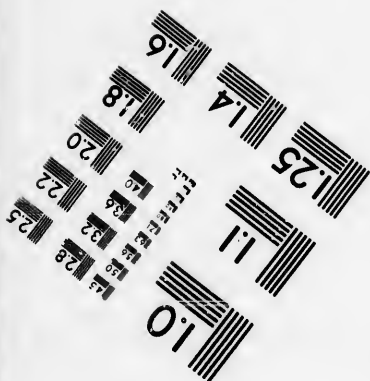
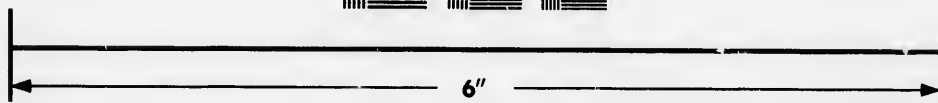
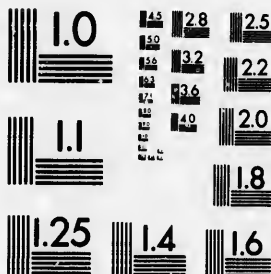


**IMAGE EVALUATION
TEST TARGET (MT-3)**



**Photographic
Sciences
Corporation**

23 WEST MAIN STREET
WEBSTER, N.Y. 14580
(716) 872-4503

15 28
18 32
20 25
18

**CIHM/ICMH
Microfiche
Series.**

**CIHM/ICMH
Collection de
microfiches.**



Canadian Institute for Historical Microreproductions / Institut canadien de microreproductions historiques

10
15
18
20

© 1986

Technical and Bibliographic Notes/Notes techniques et bibliographiques

The Institute has attempted to obtain the best original copy available for filming. Features of this copy which may be bibliographically unique, which may alter any of the images in the reproduction, or which may significantly change the usual method of filming, are checked below.

L'institut a microfilmé le meilleur exemplaire qu'il lui a été possible de se procurer. Les détails de cet exemplaire qui sont peut-être uniques du point de vue bibliographique, qui peuvent modifier une image reproduite, ou qui peuvent exiger une modification dans la méthode normale de filmage sont indiqués ci-dessous.

- | | |
|---|---|
| <input type="checkbox"/> Coloured covers/
Couverture de couleur | <input type="checkbox"/> Coloured pages/
Pages de couleur |
| <input type="checkbox"/> Covers damaged/
Couverture endommagée | <input type="checkbox"/> Pages damaged/
Pages endommagées |
| <input type="checkbox"/> Covers restored and/or laminated/
Couverture restaurée et/ou pelliculée | <input type="checkbox"/> Pages restored and/or laminated/
Pages restaurées et/ou pelliculées |
| <input type="checkbox"/> Cover title missing/
Le titre de couverture manque | <input checked="" type="checkbox"/> Pages discoloured, stained or foxed/
Pages décolorées, tachetées ou piquées |
| <input type="checkbox"/> Coloured maps/
Cartes géographiques en couleur | <input type="checkbox"/> Pages detached/
Pages détachées |
| <input type="checkbox"/> Coloured ink (i.e. other than blue or black)/
Encre de couleur (i.e. autre que bleue ou noire) | <input checked="" type="checkbox"/> Showthrough/
Transparence |
| <input type="checkbox"/> Coloured plates and/or illustrations/
Planches et/ou illustrations en couleur | <input type="checkbox"/> Quality of print varies/
Qualité inégale de l'impression |
| <input type="checkbox"/> Bound with other material/
Relié avec d'autres documents | <input type="checkbox"/> Includes supplementary material/
Comprend du matériel supplémentaire |
| <input type="checkbox"/> Tight binding may cause shadows or distortion along interior margin/
La reliure serrée peut causer de l'ombre ou de la distorsion le long de la marge intérieure | <input type="checkbox"/> Only edition available/
Seule édition disponible |
| <input type="checkbox"/> Blank leaves added during restoration may appear within the text. Whenever possible, these have been omitted from filming/
Il se peut que certaines pages blanches ajoutées lors d'une restauration apparaissent dans le texte, mais, lorsque cela était possible, ces pages n'ont pas été filmées. | <input type="checkbox"/> Pages wholly or partially obscured by errata slips, tissues, etc., have been refilmed to ensure the best possible image/
Les pages totalement ou partiellement obscurcies par un feuillet d'errata, une pelure, etc., ont été filmées à nouveau de façon à obtenir la meilleure image possible. |
| <input checked="" type="checkbox"/> Additional comments: [Printed ephemera] [4] p.
Commentaires supplémentaires: | |

This item is filmed at the reduction ratio checked below/
Ce document est filmé au taux de réduction indiqué ci-dessous.

10X	14X	18X	22X	26X	30X
<input type="checkbox"/>	<input checked="" type="checkbox"/>	<input type="checkbox"/>	<input type="checkbox"/>	<input type="checkbox"/>	<input type="checkbox"/>
12X	16X	20X	24X	28X	32X

The copy filmed here has been reproduced thanks to the generosity of:

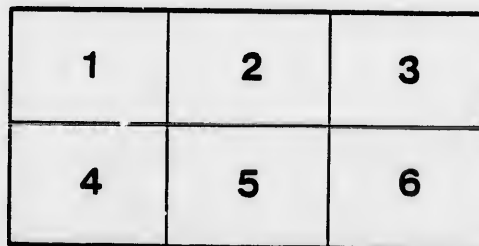
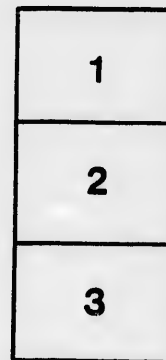
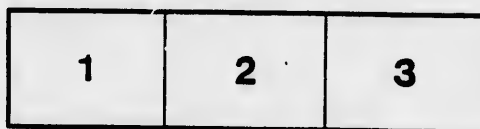
D. B. Weldon Library
University of Western Ontario
(Regional History Room)

The images appearing here are the best quality possible considering the condition and legibility of the original copy and in keeping with the filming contract specifications.

Original copies in printed paper covers are filmed beginning with the front cover and ending on the last page with a printed or illustrated impression, or the back cover when appropriate. All other original copies are filmed beginning on the first page with a printed or illustrated impression, and ending on the last page with a printed or illustrated impression.

The last recorded frame on each microfiche shall contain the symbol \rightarrow (meaning "CONTINUED"), or the symbol ∇ (meaning "END"), whichever applies.

Maps, plates, charts, etc., may be filmed at different reduction ratios. Those too large to be entirely included in one exposure are filmed beginning in the upper left hand corner, left to right and top to bottom, as many frames as required. The following diagrams illustrate the method:



L'exemplaire filmé fut reproduit grâce à la générosité de:

D. B. Weldon Library
University of Western Ontario
(Regional History Room)

Les images suivantes ont été reproduites avec le plus grand soin, compte tenu de la condition et de la netteté de l'exemplaire filmé, et en conformité avec les conditions du contrat de filmage.

Les exemplaires originaux dont la couverture en papier est imprimée sont filmés en commençant par le premier plat et en terminant soit par la dernière page qui comporte une empreinte d'impression ou d'illustration, soit par le second plat, selon le cas. Tous les autres exemplaires originaux sont filmés en commençant par la première page qui comporte une empreinte d'impression ou d'illustration et en terminant par la dernière page qui comporte une telle empreinte.

Un des symboles suivants apparaîtra sur la dernière image de chaque microfiche, selon le cas: le symbole \rightarrow signifie "A SUIVRE", le symbole ∇ signifie "FIN".

Les cartes, planches, tableaux, etc., peuvent être filmés à des taux de réduction différents. Lorsque le document est trop grand pour être reproduit en un seul cliché, il est filmé à partir de l'angle supérieur gauche, de gauche à droite, et de haut en bas, en prenant le nombre d'images nécessaire. Les diagrammes suivants illustrent la méthode.

ire
détails
es du
modifier
er une
l'image

es

errata
to

pelure,
on à



32X

FRANZ & POPE

IMPROVED AUTOMATIC

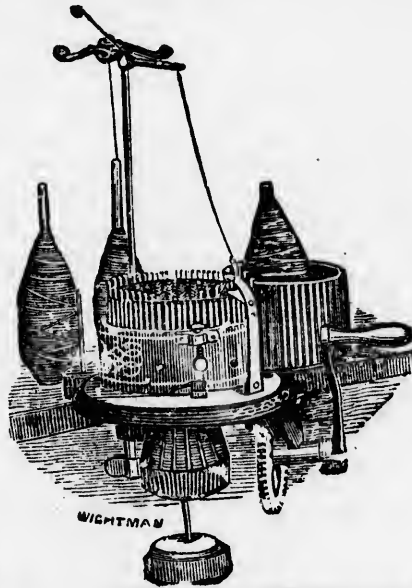
Knitting Machine.

Retail Price **\$25.** Our net
One Cylinder. Cash Price.

INSTRUCTIONS FREE

AT OUR OFFICE.

Good operator sent at low rates.



MODEL OF HONOUR!

HIGHEST AWARD.

Centennial—1876—Commission.

GOOD ACTIVE AGENTS WANTED.
EXCLUSIVE TERRITORY GIVEN.

Send for Terms and Prices.

ADDRESS

FRANZ & POPE KNITTING MACHINE

Manufacturing Co.,

GEORGETOWN, ONT., CANADA.

The FRANZ & POPE KNITTING MACHINE

Takes the lead in sales, outrivals its older competitors, and stood the test of years of constant use, and now holds an enviable reputation. Among manufacturers of **COTTON & WOOLLEN HOSIERY** no machine has succeeded in producing **SEAMLESS HOSE OF SAME QUALITY** for the trade as the **FRANZ & POPE**.

ONE DAY'S WORK.

20 TO 30 PAIRS
STOCKINGS.



30 TO 40 PAIRS
SOCKS.

KNITS A SOCK COMPLETE IN SEVEN MINUTES.

Manufacturers using 30 to 40 of these machines have built up a successful business for years through the pure merits of the goods. Having competed in the wholesale market against foreign goods, Franz & Pope machine

IS EQUALLY WELL ADAPTED TO COTTON HOSE,
Which make has been a failure in other machines.

Many tons of **COTTON YARN** are used annually on these Machines for Hose. Don't fail to see them and try them.

Take one Home; You can make \$2, \$3 and \$4 per Day.

\$35
 \$40
 \$45
 \$50
 T
 an
 Agents do well sell
 D
 M
 o
 N

INE

its
est
lds
an-
ERY
ing
PE.

30 TO 40 PAIRS
SOCKS.

of
suc-
the
om-
inst
nine
SE,
a these

Take one Home; You can make \$2, \$3 and \$4 per Day.

The Franz & Pope Knitting Machine

Reduced Price.

- \$35 64 Cylinder.....to \$25
- \$40 64, 72 Cylinder.....to \$30
- \$45 64, 72, 84 Cylinder..to \$35
- \$50 64, 72, 84, 100 Cyl'r.to \$40

These Prices are for
NET CASH.
and within reach of all.

COTTON ALL COLORS. **YARNS**
Supplied at low Wholesale Prices.

Needles AND Repairs
Sent by mail to
all parts of the world.

SEE PRICE LIST
in Book of Instruction.

SEND MONEY TO SAVE
DELAY.

MEDAL OF HONOR, 1877, AT QUEBEC.

Agents do well sell-
ing them!
Woolen Mills do
well using them!



Two pairs per day
will pay for machine
in 3 months at usual
profits, and made in
half an hour!

Ask for the Franz & Pope Seamless Hose.

SAVE YOUR WIFE.

**DON'T ASK YOUR FAMILY TO SPEND DAYS
OVER WHAT CAN BE DONE
IN MINUTES.**

We teach how to make Shirts, Drawers,
Mitts &c., which are easily made in plain, ribb,
or beautiful fancy stitches.

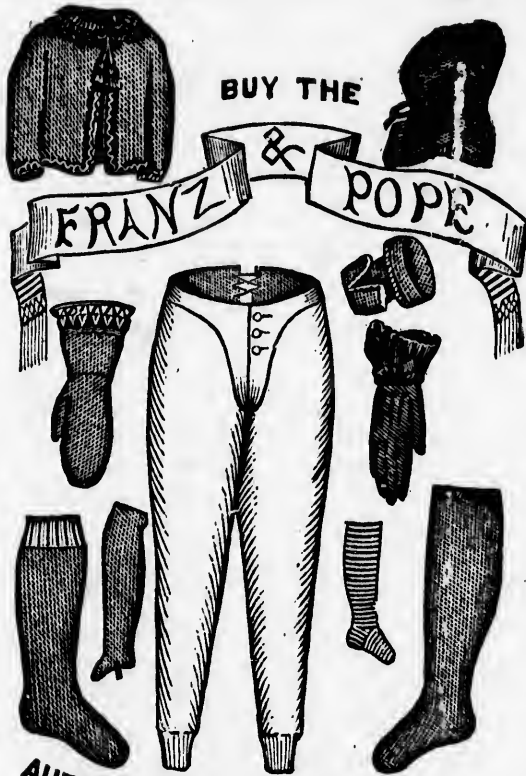
FRANZ & POPE MACHINE

Narrows in six different ways for ankle, and
makes any size or shape of stocking out
of any kind of yarn.

Franz & Pope Knitting Machine Manuf'g Co.

Hold the exclusive right to manufacture, sell, and use in Canada, under letters patent No. 3775, Dated August 22nd, 1874, for the term of ten years. Infringers will be prosecuted.

UNDERSHIRTS, JACKETS, MITTS, SHAWLS, &c.
Can be made in Plain or beautiful Fancy Stitches.



ALL SAMPLES SHOWN ON THIS CUT CAN BE MADE
AS PERFECT IN SHAPE AS BY HAND.

AUTOMATIC
KNITTING MACHINE,
AND YOU WILL HAVE THE VERY BEST.

SEE OUR AGENT.

