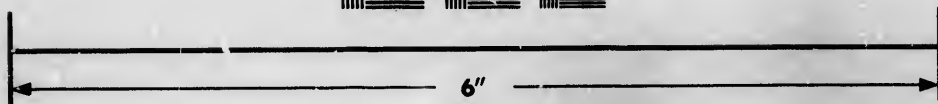
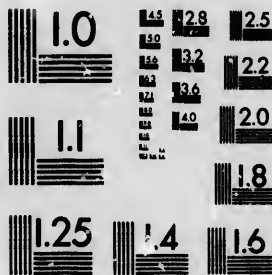


**IMAGE EVALUATION
TEST TARGET (MT-3)**



**Photographic
Sciences
Corporation**

23 WEST MAIN STREET
WEBSTER, N.Y. 14580
(716) 972-4503

**CIHM/ICMH
Microfiche
Series.**

**CIHM/ICMH
Collection de
microfiches.**



Canadian Institute for Historical Microreproductions / Institut canadien de microreproductions historiques

© 1986

The institute has attempted to obtain the best original copy available for filming. Features of this copy which may be bibliographically unique, which may alter any of the images in the reproduction, or which may significantly change the usual method of filming, are checked below.

L'institut a tenté d'obtenir la meilleure copie originale disponible pour le filmage. Les caractéristiques de cette copie qui peuvent être bibliographiquement uniques, qui peuvent modifier n'importe quel point de la reproduction, ou qui peuvent modifier de façon importante la méthode habituelle de filmage, sont indiquées ci-dessous.

- Coloured covers/
Couverture de couleur
- Covers damaged/
Couverture endommagée
- Covers restored and/or laminated/
Couverture restaurée et/ou pelliculée
- Cover title missing/
Le titre de couverture manque
- Coloured maps/
Cartes géographiques en couleur
- Coloured ink (i.e. other than blue or black)/
Encre de couleur (i.e. autre que bleue ou noire)
- Coloured plates and/or illustrations/
Planches et/ou illustrations en couleur
- Bound with other material/
Relié avec d'autres documents
- Tight binding may cause shadows or distortion along interior margin/
La reliure serrée peut causer de l'ombre ou de la distorsion le long de la marge intérieure
- Blank leaves added during restoration may appear within the text. Whenever possible, these have been omitted from filming/
Il se peut que certaines pages blanches ajoutées lors d'une restauration apparaissent dans le texte, mais, lorsque cela était possible, ces pages n'ont pas été filmées.
- Additional comments: [Printed ephemera] [2] p.
Commentaires supplémentaires:

- C
- P
- P
- P
- P
- S
- T
- O
- O
- in
- C
- O
- S
- P
- si
- en
- Le
- ob
- et
- ob

This item is filmed at the reduction ratio checked below/
Ce document est filmé au taux de réduction indiqué ci-dessous.

10X	12X	14X	16X	18X	20X	22X
<input type="checkbox"/>	<input type="checkbox"/>	<input type="checkbox"/>	<input type="checkbox"/>	<input type="checkbox"/>	<input type="checkbox"/>	<input checked="" type="checkbox"/>

The copy filmed here has been reproduced thanks to the generosity of:

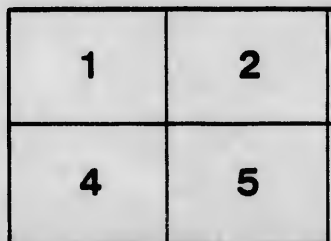
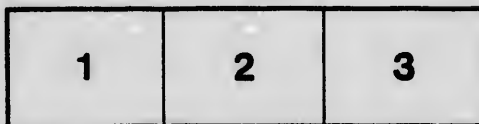
D. B. Weldon Library
University of Western Ontario
(Regional History Room)

The images appearing here are the best quality possible considering the condition and legibility of the original copy and in keeping with the filming contract specifications.

Original copies in printed paper covers are filmed beginning with the front cover and ending on the last page with a printed or illustrated impression, or the back cover when appropriate. All other original copies are filmed beginning on the first page with a printed or illustrated impression, and ending on the last page with a printed or illustrated impression.

The last recorded frame on each microfiche shall contain the symbol \rightarrow (meaning "CONTINUED"), or the symbol ∇ (meaning "END"), whichever applies.

Maps, plates, charts, etc., may be filmed at different reduction ratios. Those too large to be entirely included in one exposure are filmed beginning in the upper left hand corner, left to right and top to bottom, as many frames as required. The following diagrams illustrate the method:



duced thanks

L'exemplaire filmé fut reproduit grâce à la générosité de:

D. B. Weldon Library
University of Western Ontario
(Regional History Room)

st quality
d legibility
ith the

Les images suivantes ont été reproduites avec le plus grand soin, compte tenu de la condition et de la netteté de l'exemplaire filmé, et en conformité avec les conditions du contrat de filmage.

s are filmed
nding on
ted Impres-
ate. All
ning on the
Impres-
h a printed

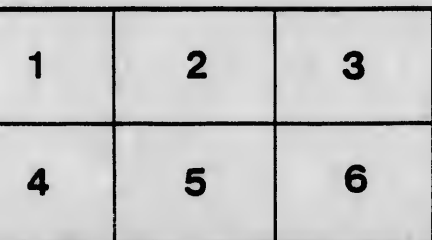
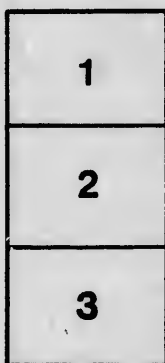
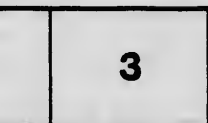
Les exemplaires originaux dont la couverture en papier est imprimée sont filmés en commençant par le premier plat et en terminant soit par la dernière page qui comporte une empreinte d'impression ou d'illustration, soit par le second plat, selon le cas. Tous les autres exemplaires originaux sont filmés en commençant par la première page qui comporte une empreinte d'impression ou d'illustration et se terminent par la dernière page qui comporte une telle empreinte.

ofiche
"CON-
"END"),

Un des symboles suivants apparaîtra sur la dernière image de chaque microfiche, selon le cas: le symbole \rightarrow signifie "A SUIVRE", le symbole ∇ signifie "FIN".

ned at
erge to be
ffilmed
er, left to
nes as
strate the

Les cartes, planches, tableaux, etc., peuvent être filmés à des taux de réduction différents. Lorsque le document est trop grand pour être reproduit en un seul cliché, il est filmé à partir de l'angle supérieur gauche, de gauche à droite, et de haut en bas, en prenant le nombre d'images nécessaire. Les diagrammes suivants illustrent la méthode.

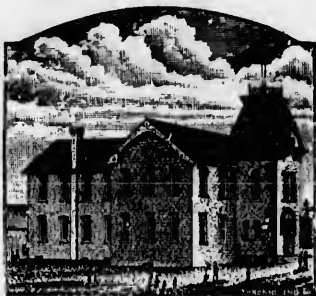


17 June 89
The Annual Meeting of the

East Clinton Teachers' Institute

—WILL BE HELD IN THE ASSEMBLY HALL OF THE—

COLLEGIATE



INSTITUTE

CLINTON, ON

Wednesday and Thursday, May 22nd and 23rd, 1889,

Commencing at 10 o'clock A. M.



PROGRAMME.



- 1—President's Address MR. DORRANCE
- 2—Reading, Junior Classes..... MR. J. DEERNESS
- 3—Arithmetic, the Simple Rules..... “
- 4—Sent Occupation of Junior Classes..... “
- 5—Music in the Public School..... “
- 6—History in Public Schools MR. W. R. LOUGH
- 7—Botany MR. D. M. ROBB
- 8—Public School Temperance and Hygiene MR. R. HICKS
- 9—A Paper on Whitney's Grammar..... MR. C. CLARKSON, B.A.
- 10—Election of Officers and Treasurer's Report.

Railway Certificates, for reduced rates, have been granted by the G.T.R. Teachers who have not already received them, should apply to the Secretary at once. CERTIFICATES MUST BE SIGNED BY THE AGENT AT THE STARTING PLACE.

Trains arrive at Clinton from the North at 7.43 a.m., and 4.45 p.m., and from the South at 10 a.m. and 6.45 p.m.; from the East arrive at 9.27 a.m., and 1.20, 6.55, and 9.27 p.m., and depart for the East at 7.43 a.m., 2.20 and 4.45 p.m.

The next Entrance Examination will be held at Clinton, Seaforth, Wingham and Brussels, on the 4th, 5th and 6th of July, 1889, beginning on the 4th, at 1.30 p.m. Notice should be sent to Inspector Malloch not later than the 31st of May; candidates must state at what place they intend to write. A fee of 50 cents will be charged each candidate. Drawing Book No. 5, certified to by the teacher, must be handed to the presiding examiner, on the first day of examination. No paper on Agriculture will be set at the coming examination.

Teachers will please send copies of the Programme to their Trustees.

PUBLIC MEETING—On Wednesday Evening a Public Meeting will be held in the Town Hall, at which addresses will be delivered by INSPECTOR DEERNESS and A. H. MANNING, Esq., Chairman of Trustees Board, Clinton Collegiate Institute. A suitable programme of music will also be furnished for the occasion.

D. DORRANCE,
President, Seaforth.

A. M. BURCHILL,
Secretary, Clinton.

10 PER CENT

DISCOUNT TO TEACHERS WHO VISIT

COOPER'S

BOOKSTORE

ON MAY 22ND AND 23RD, WILL BE GIVEN
ON ALL PURCHASES OF \$1 OR OVER

SPECIALTIES.

WARD LOCKE'S CELEBRATED HISTORICAL
AND BIOGRAPHICAL SERIES ONLY 3c. EACH

Humboldt's Library of Science, 15c. each.

Cooper's Lead Pencils 20 c. per dozen.

Cooper's Writing Tablets.

FOOTBALLS--NET PRICE

No. 3--\$2.00

No. 4--\$2.25 best quality

No. 5--\$2.50

COMPLETE LINE OF SCHOOL SUPPLIES,
STATIONERY AND FANCY GOODS

W. COOPER & CO.,
COOPER'S NEW BLOCK, CLINTON.



