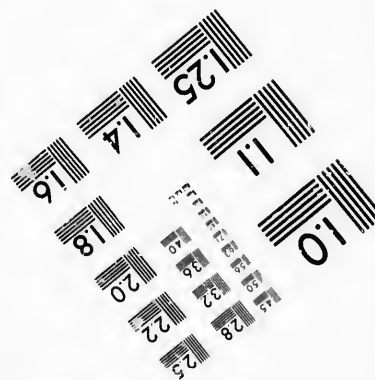
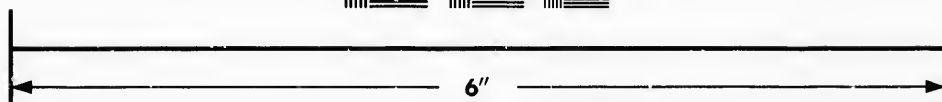
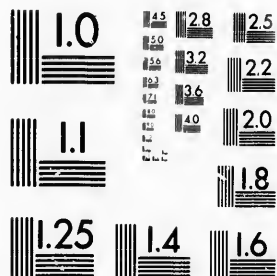


**IMAGE EVALUATION
TEST TARGET (MT-3)**



Photographic
Sciences
Corporation

23 WEST MAIN STREET
WEBSTER, N.Y. 14580
(716) 872-4503



**CIHM/ICMH
Microfiche
Series.**

**CIHM/ICMH
Collection de
microfiches.**



Canadian Institute for Historical Microreproductions / Institut canadien de microreproductions historiques



© 1986

Technical and Bibliographic Notes/Notes techniques et bibliographiques

The Institute has attempted to obtain the best original copy available for filming. Features of this copy which may be bibliographically unique, which may alter any of the images in the reproduction, or which may significantly change the usual method of filming, are checked below.

L'Institut a microfilmé le meilleur exemplaire qu'il lui a été possible de se procurer. Les détails de cet exemplaire qui sont peut-être uniques du point de vue bibliographique, qui peuvent modifier une image reproduite, ou qui peuvent exiger une modification dans la méthode normale de filmage sont indiqués ci-dessous.

- | | |
|---|---|
| <input type="checkbox"/> Coloured covers/
Couverture de couleur | <input checked="" type="checkbox"/> Coloured pages/
Pages de couleur |
| <input type="checkbox"/> Covers damaged/
Couverture endommagée | <input type="checkbox"/> Pages damaged/
Pages endommagées |
| <input type="checkbox"/> Covers restored and/or laminated/
Couverture restaurée et/ou pelliculée | <input type="checkbox"/> Pages restored and/or laminated/
Pages restaurées et/ou pelliculées |
| <input type="checkbox"/> Cover title missing/
Le titre de couverture manque | <input checked="" type="checkbox"/> Pages discoloured, stained or foxed/
Pages décolorées, tachetées ou piquées |
| <input type="checkbox"/> Coloured maps/
Cartes géographiques en couleur | <input type="checkbox"/> Pages detached/
Pages détachées |
| <input type="checkbox"/> Coloured ink (i.e. other than blue or black)/
Encre de couleur (i.e. autre que bleue ou noire) | <input type="checkbox"/> Showthrough/
Transparence |
| <input type="checkbox"/> Coloured plates and/or illustrations/
Planches et/ou illustrations en couleur | <input type="checkbox"/> Quality of print varies/
Qualité inégale de l'impression |
| <input type="checkbox"/> Bound with other material/
Relié avec d'autres documents | <input type="checkbox"/> Includes supplementary material/
Comprend du matériel supplémentaire |
| <input type="checkbox"/> Tight binding may cause shadows or distortion along interior margin/
La reliure serrée peut causer de l'ombre ou de la distorsion le long de la marge intérieure | <input type="checkbox"/> Only edition available/
Seule édition disponible |
| <input type="checkbox"/> Blank leaves added during restoration may appear within the text. Whenever possible, these have been omitted from filming/
Il se peut que certaines pages blanches ajoutées lors d'une restauration apparaissent dans le texte, mais, lorsque cela était possible, ces pages n'ont pas été filmées. | <input type="checkbox"/> Pages wholly or partially obscured by errata slips, tissues, etc., have been refilmed to ensure the best possible image/
Les pages totalement ou partiellement obscurcies par un feuillet d'errata, une pelure, etc., ont été filmées à nouveau de façon à obtenir la meilleure image possible. |
| <input checked="" type="checkbox"/> Additional comments: [Printed ephemera] 1 sheet (verso blank)
Commentaires supplémentaires: | |

This item is filmed at the reduction ratio checked below/
Ce document est filmé au taux de réduction indiqué ci-dessous.

10X	12X	14X	16X	18X	20X	22X	24X	26X	28X	30X	32X
									/		

The copy filmed here has been reproduced thanks to the generosity of:

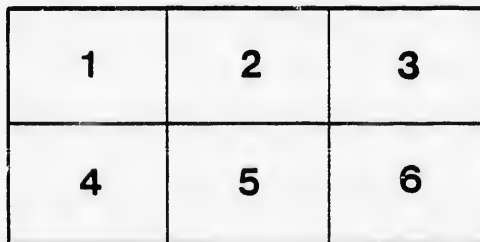
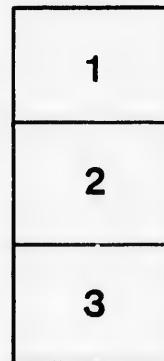
New Brunswick Museum
Saint John

The images appearing here are the best quality possible considering the condition and legibility of the original copy and in keeping with the filming contract specifications.

Original copies in printed paper covers are filmed beginning with the front cover and ending on the last page with a printed or illustrated impression, or the back cover when appropriate. All other original copies are filmed beginning on the first page with a printed or illustrated impression, and ending on the last page with a printed or illustrated impression.

The last recorded frame on each microfiche shall contain the symbol \rightarrow (meaning "CONTINUED"), or the symbol ∇ (meaning "END"), whichever applies.

Maps, plates, charts, etc., may be filmed at different reduction ratios. Those too large to be entirely included in one exposure are filmed beginning in the upper left hand corner, left to right and top to bottom, as many frames as required. The following diagrams illustrate the method:



L'exemplaire filmé fut reproduit grâce à la générosité de:

New Brunswick Museum
Saint John

Les images suivantes ont été reproduites avec le plus grand soin, compte tenu de la condition et de la netteté de l'exemplaire filmé, et en conformité avec les conditions du contrat de filmage.

Les exemplaires originaux dont la couverture en papier est imprimée sont filmés en commençant par le premier plat et en terminant soit par la dernière page qui comporte une empreinte d'impression ou d'illustration, soit par le second plat, selon le cas. Tous les autres exemplaires originaux sont filmés en commençant par la première page qui comporte une empreinte d'impression ou d'illustration et en terminant par la dernière page qui comporte une telle empreinte.

Un des symboles suivants apparaîtra sur la dernière image de chaque microfiche, selon le cas: le symbole \rightarrow signifie "A SUIVRE", le symbole ∇ signifie "FIN".

Les cartes, planches, tableaux, etc., peuvent être filmés à des taux de réduction différents. Lorsque le document est trop grand pour être reproduit en un seul cliché, il est filmé à partir de l'angle supérieur gauche, de gauche à droite, et de haut en bas, en prenant le nombre d'images nécessaire. Les diagrammes suivants illustrent la méthode.

ails
du
odifier
une
page

rata
o

elure,
à

32X

A HAPPY NEW-YEAR.



The New's-Boy's Child Address TO THE PATRONS OF THE **CHURCH WITNESS.**

*The whole year through
We've brought for you,
The "Witness" to your door;
On New-Year's day
We ask our pay,—
A SHILLING,—nothing more.*

The northern breezes sharp and clear,
Have ushered in the new-born year,
And happy may it be!
May all our friends attain their ends,
And enemies be turned to friends,
In eighteen fifty-three.

The by-gone year, in Church and State,
Has many strange things to relate;
To some of these we turn:
They are not all of such a class,
That, whether brought or not, to pass,
Church Witnesses need mourn.

We know that Britain's standard waves,
Where ocean's sunny billow laves
The shores of Birmah's land;
We know, on Afric's southern coast
Too many precious lives are lost,
In war with the Caffre band.

In fiekle Gallia's land, we know,
The crown is on Napoleon's brow.
And freedom is no rare:
We know, amidst a nation's gloom,
That good Old Duke is in the tomb,
Napoleon quailed before.

We know the gold is good, is fine,
That comes from the Australian mine:
That *Free Trade* rules the roast:
We know that railway cars are coming,
And speculators now are summing,
The profits and the cost.

And swifter than the railway ear,
Beneath Atlantic's waves afar,
From Britain to Cape Race;
And thence along the Labrador,
To snowy Scotia's ice-bound shore,
The Electric-wire we trace.

Nor can we pass that snowy realm,
E'en with the lightning at the helm,
That lies the Polo around,
Without a prayer for *Sir Edward*, bold,
Now battling with the icebergs cold,
That *Franklin* may be found.

All these, no doubt, are fertile themes,
And each prolifically teems
With glowing hopes and fears:
But we sing the *SHIP* that has braved the seas
Of a world at war, or a world at ease,
For many a hundred years.

The good OLD CHURCH is tossing now,
As she of yore was used to do,
Upon the troubled waves;
But her faithful crew need never fear,
For her Star above is bright and clear;
While storms below she braves.

On dear old ALBION's happy shores,
Where Providence its blessings pours,
Some hate the REFORMATION;
And with its troubles and its toils,
Its squabbles, feuds, and endless broils,
Would have hark CUNVOCATION.

And some there are, it may be few,
That fain would have their Synods too,
Our Colonies to rule;
But have them whosoever may,
NEW BRUNSWICK, we presume to say,
Will not be such a fool.

Poor Gladstone's Bill has travelled round,
From post to pillar, but has found
No very lovely greeting;
It's sage provisions, not as yet,
Have joy or admiration met,
From e'en one Parish Meeting.

We do not think that Synods are,
As good as some wise folks declare:
Or Gladstone free from guile:
Their composition till we know,
And more about their powers too;
We'd rather wait awhile.

The good OLD SHIP must sail along, [strong,
Though storms should blow both loud and
As she was wont to do;
At home, abroad, the chief command
Must still remain in SUMNER's hand—
A faithful man and true.

Saint John, N. B., 1st January, 1853.

1853

