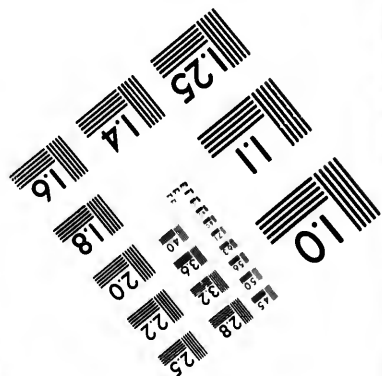
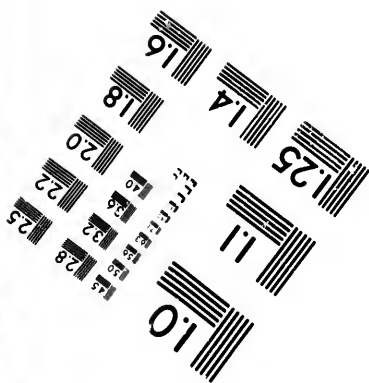
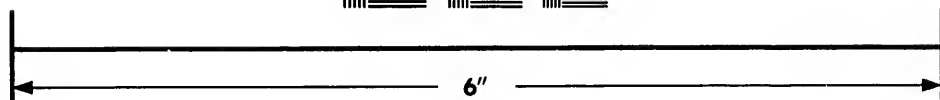
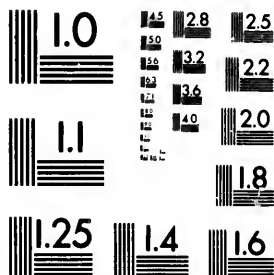


**IMAGE EVALUATION
TEST TARGET (MT-3)**



**Photographic
Sciences
Corporation**

23 WEST MAIN STREET
WEBSTER, N.Y. 14580
(716) 872-4503

14
16
18
20
22
25

**CIHM/ICMH
Microfiche
Series.**

**CIHM/ICMH
Collection de
microfiches.**



Canadian Institute for Historical Microreproductions / Institut canadien de microreproductions historiques

11
10
57

© 1987

Technical and Bibliographic Notes/Notes techniques et bibliographiques

The Institute has attempted to obtain the best original copy available for filming. Features of this copy which may be bibliographically unique, which may alter any of the images in the reproduction, or which may significantly change the usual method of filming, are checked below.

L'Institut a microfilmé le meilleur exemplaire qu'il lui a été possible de se procurer. Les détails de cet exemplaire qui sont peut-être uniques du point de vue bibliographique, qui peuvent modifier une image reproduite, ou qui peuvent exiger une modification dans la méthode normale de filmage sont indiqués ci-dessous.

Coloured covers/
Couverture de couleur

Covers damaged/
Couverture endommagée

Covers restored and/or laminated/
Couverture restaurée et/ou pelliculée

Cover title missing/
Le titre de couverture manque

Coloured maps/
Cartes géographiques en couleur

Coloured ink (i.e. other than blue or black)/
Encre de couleur (i.e. autre que bleue ou noire)

Coloured plates and/or illustrations/
Planches et/ou illustrations en couleur

Bound with other material/
Relié avec d'autres documents

Tight binding may cause shadows or distortion along interior margin/
La reliure serrée peut causer de l'ombre ou de la distorsion le long de la marge intérieure

Blank leaves added during restoration may appear within the text. Whenever possible, these have been omitted from filming/
Il se peut que certaines pages blanches ajoutées lors d'une restauration apparaissent dans le texte, mais, lorsque cela était possible, ces pages n'ont pas été filmées.

Additional comments:/ Pages 3 - 4 are missing.
Commentaires supplémentaires:

Coloured pages/
Pages de couleur

Pages damaged/
Pages endommagées

Pages restored and/or laminated/
Pages restaurées et/ou pelliculées

Pages discoloured, stained or foxed/
Pages décolorées, tachetées ou piquées

Pages detached/
Pages détachées

Showthrough/
Transparence

Quality of print varies/
Qualité inégale de l'impression

Includes supplementary material/
Comprend du matériel supplémentaire

Only edition available/
Seule édition disponible

Pages wholly or partially obscured by errata slips, tissues, etc., have been refilmed to ensure the best possible image/
Les pages totalement ou partiellement obscurcies par un feuillet d'errata, une pelure, etc., ont été filmées à nouveau de façon à obtenir la meilleure image possible.

This item is filmed at the reduction ratio checked below/
Ce document est filmé au taux de réduction indiqué ci-dessous.

10X	14X	18X	22X	26X	30X
<input type="checkbox"/>	<input type="checkbox"/>	<input type="checkbox"/>	<input checked="" type="checkbox"/>	<input type="checkbox"/>	<input type="checkbox"/>
12X	16X	20X	24X	28X	32X

The copy filmed here has been reproduced thanks to the generosity of:

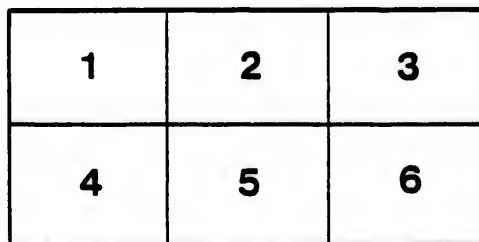
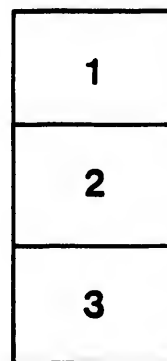
D.B. Weldon Library
University of Western Ontario
(Regional History Room)

The images appearing here are the best quality possible considering the condition and legibility of the original copy and in keeping with the filming contract specifications.

Original copies in printed paper covers are filmed beginning with the front cover and ending on the last page with a printed or illustrated impression, or the back cover when appropriate. All other original copies are filmed beginning on the first page with a printed or illustrated impression, and ending on the last page with a printed or illustrated impression.

The last recorded frame on each microfiche shall contain the symbol \rightarrow (meaning "CONTINUED"), or the symbol ∇ (meaning "END"), whichever applies.

Maps, plates, charts, etc., may be filmed at different reduction ratios. Those too large to be entirely included in one exposure are filmed beginning in the upper left hand corner, left to right and top to bottom, as many frames as required. The following diagrams illustrate the method:



L'exemplaire filmé fut reproduit grâce à la générosité de:

D.B. Weldon Library
University of Western Ontario
(Regional History Room)

Les images suivantes ont été reproduites avec le plus grand soin, compte tenu de la condition et de la netteté de l'exemplaire filmé, et en conformité avec les conditions du contrat de filmage.

Les exemplaires originaux dont la couverture en papier est imprimée sont filmés en commençant par le premier plat et en terminant soit par la dernière page qui comporte une empreinte d'impression ou d'illustration, soit par le second plat, selon le cas. Tous les autres exemplaires originaux sont filmés en commençant par la première page qui comporte une empreinte d'impression ou d'illustration et en terminant par la dernière page qui comporte une telle empreinte.

Un des symboles suivants apparaîtra sur la dernière image de chaque microfiche, selon le cas: le symbole \rightarrow signifie "A SUIVRE", le symbole ∇ signifie "FIN".

Les cartes, planches, tableaux, etc., peuvent être filmés à des taux de réduction différents. Lorsque le document est trop grand pour être reproduit en un seul cliché, il est filmé à partir de l'angle supérieur gauche, de gauche à droite, et de haut en bas, en prenant le nombre d'images nécessaire. Les diagrammes suivants illustrent la méthode.

VOTERS' LIST

— FOR THE —

TOWNSHIP OF DELAWARE

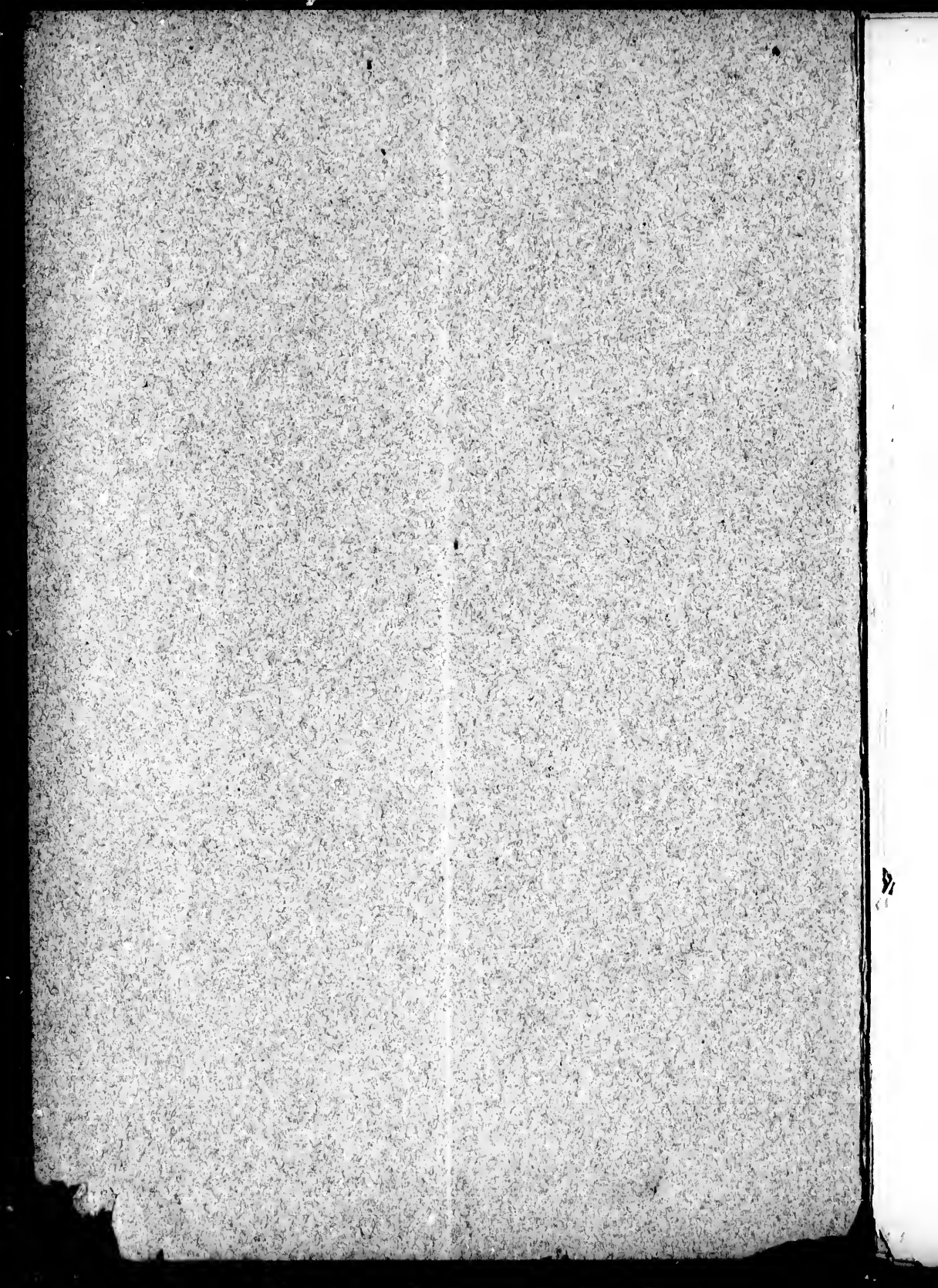
FOR 1878.

LONDON, ONT.:

FREE PRESS PRINTING COMPANY, RICHMOND STREET.

1878.

filed 7/10/78 E. Johnson



VOTERS' LIST

For the TOWNSHIP of DELAWARE

FOR 1878.

POLLING SUB-DIVISION No. 1.

Comprising all lands in the Township of Delaware lying east of 2nd Con.
Road and north of Lot 8.

PART I.—Persons entitled to vote at BOTH Municipal Elections and Elections
to the Legislative Assembly.

No. of Roll.	NAME.	CON. or STREET.	LOT.	
1 261	Anderson, John L.	3	Pt 6	F
2 181	Aldwell, Lee	2	Pt 5	F
3 190	Bain, John	2	Pt 6	F
4 384	Barney, John	Gore	Pt B	T
5 253	Barney, Mark	3	Pt 3	F
6 254	Banghart, Jesse	3	Pt 4	F
7 180	Benkhe, Charles	2	Pt 4	F
8 314	Best, John	4	3	F
9 314	Best, Henry	4	3	F
10 266	Blashall, Henry	3	Pt 7 & 8	F
11 266	Blashall, Tyndall	3	Pt 7 & 8	F
12 176	Bradt, Aaron	2	SE 3	F
13 176	Bradt, James	2	SE 3	F
14 182	Christian, William	2	NE 5	F
15 312	College, Wm. W.	4	NE 2	F
16 312	College, Andrew	4	NE 2	F. Son
17 260	Colvin, Andrew	3	W 1/2 5	F
18 309	Cornell, Charles	4	N 1/2 1	F
19 309	Cornell, Joseph	4	N 1/2 1	T
20 405	Cocks, Frederick	King	Pt B C D	F
21 178	Cornell, Simon	2	Pt 4	F
22 414	Comfort, Albert	S. King	B K C	T
23 403	Cooke, Jeffrey	Gore	Pt C	F
24 248	Crawford, Dennis	3	SE 1	F
25 378	Culver, Alfred	Gore	Pt A	F
26 321	Deadman, A. G.	4	SE 5	F
27 320	Deadman, F. W.	4	SW 5	T
28 319	Deadman, W. H.	4	NE 5	F
29 170	Dowling, Samuel	2	N W 3	F
30 168	Doyle, William	2	N W 1	F
31 167	Doyle, Benjamin	2	S W 1	F

No. on Roll.	NAME.	CON. or STREET.	LOT.	
32 191	Elliott, Richard	2	E $\frac{1}{2}$ 7	F
33 191	Elliott, John	2	E $\frac{1}{2}$ 7	F
34 393	Elson, John	Gore	Pt D	F
35 394	Elson, Warren	Gore	Pt D	F
36 399	Elson, Charles	Gore	Pt D	F
37 189	Elviège, Edward	2	Pt 7	F
38 185	Eichenburgher, Samuel	2	Pt 6	F
39 377	Fonger, William	Gore	Pt A E	F
40 197	Fostlett, John	2	Pt 7	T
41 264	Gilbert, Abraham	3	E $\frac{1}{2}$ 7	F
42 171	Gowanlock, John	2	Pt 2	F
43 381	Grantham, George	Gore	Pt A	T
44 413	Harris, Thomas	King	B K A	T
45 413	Harris, William	King	B K A	F
46 177	Heatley, William	2	NE 4	F
47 181	Hotham, Abraham	2	Pt 5	T
48 181	Hotham, John	2	Pt 5	F
49 316	Ireland, George	4	Pt 4	F
50 317	Ireland, Walter	4	Pt 5	O
51 375	Ireland, John	Gore	Pt A E	O
52 184	Kennedy, Thomas	2	Pt 5	F
53 245	Kilbourne, John R.	3	NE 1	T
54 245	Kilbourne, Byron	3	NE 1	T
55 388	Kilbourne, Robt. jun.	Gore	Pt C	F
56 396	Kilbourne, Burley	Gore	Pt C	F
57 392	Kilbourne, Harvey	Gore	Pt D	F
58 392	Kilbourne, Saml.	Gore	Pt D	T
59 395	Kilbourne, Timothy	Gore	Pt D	T
60 401	Kilbourne, Jas. E.	Gore	Pt D	O
61 401	Kilbourne, Robt., sen.	Gore	Pt D	F
62 402	Kilbourne, Benjamin	Gore	Pt C	F
63 250	Knox, Thomas	3	Pt 2	F
64 93	Leslie, Ephraim	2	E Pt 6	F
65 188	Leslie, Willham	2	E Pt 6	F
66 173	Luce, Asa	3	Pt 3	F
67 322	McLellan, Nelson	4	Pt 6	F
68 322	McLellan, Edward	4	Pt 6	F. Son
69 322	McLellan, Harvey	4	Pt 6	F. Son
70 257	McKay, Phillip	3	3, 4, 5	F
71 257	McKay, Eli	3	3, 4, 5	F
72 252	Munce, John	3	Pt 3	T
73 398	Myers, Andrew	Gore	Pt D	F
74 398	Myers, William	Gore	Pt D	F
75 318	Nichols, S. F.	4	Pt 4	F
76 385	Nichols, David	Gore	Pt B	F
77 251	Noxel, August	3	SE 2	F
78 311	Ormond, George	4	S $\frac{1}{2}$ 1	F
79 311	Ormond, Stephen	4	S $\frac{1}{2}$ 1	F. Son

J. R.B.

	No. on roll.	NAME.	CON. or STREET.	LOT.	
46	113	Hay, Walter	1	W $\frac{1}{2}$ 9	F
47	112	Hacker, William.....	1	S $\frac{1}{2}$ 8	F
48	99	Harris, Gilbert.....	1	Pt 5	F
49	99	Harris, William	1	Pt 5	F. Son
50	65	Hammond, R. C.	D	PK 7, 8	F
51	110	Hammond, George.....	1	N $\frac{1}{2}$ 8	T
52	110	Hammond, Henry.....	1	N $\frac{1}{2}$ 8	T
53	71	Hill, George.....	D	Pt 6	F
54	78	Harker, Joseph.....	D	Pt 9	F
55	79	Heatley, John.....	D	Pt 10	F
56	79	Heatley, George.....	D	Pt 10	F. Son
57	104	Hall, William.....	1	Pt 5	F
58	52	Hill, John	D. Young	2, 3	F
59	7	Harker, William.....	W. York	21, 25	F
60	55	Hacker, Edward.....	W. York	19	F
61	17	Harris, James.....	S. King	6	F
62	115	Johnstone, Wallace.....	1	W $\frac{1}{2}$ 11	T
63	115	Johnstone, Henry.....	1	W $\frac{1}{2}$ 11	T
64	108	Jell, Horatio.....	1	EA 7	F
65	100	Jeffry, James.....	1	Pt 5	F
66	88	Johnstone, John.....	D	Pt 10	F
67	89	Johnstone, David	D	Pt 11	F
68	116	Johnstone, H., sen.....	D	Pt 12	F
69	4	Jarvis, Frances	S. Bridge	1, 7	F
70	129	Janes, William.....	D	Pt 5	F
71	129	Janes, Henry.....	D	Pt 5	F
72	48	Jennings, John.....	N. King	15	F
73	130	Kelley, William, sen.....	D	4	F
74	130	Kelley, William, jun.....	D	4	F
75	103	Kennedy, Henry.....	1	Pt 5	F
76	70	Karl, Leonard.....	H. Road	12	F
77	28	Knowles, J. W.....	N. King	7	F
78	42	Lawson, David.....	E. Main	12	F
79	51	Larkins, H. J.....	D	Pt 5	F
80	416	Lockwood, Henry.....	S. Bridge	9	F
81	56	Liuk, George.....	S. Young	75, 76, 77	F
82	106	Merrill, Jeremiah.....	1	6	F
83	106	Merrill, Sylvester.....	1	6	F
84	141	McEwing, John.....	1	N $\frac{1}{2}$ 1	F
85	141	McEwing, Thomas.....	1	N $\frac{1}{2}$ 1	F
86	62	Mahler, George.....	E. Pr. Albt	3, 4, 5	F
87	18	Moore, James.....	S. King	8	F
88	63	Montgomery, Robert.....	D	PK 6	T
89	11	McPherson, William.....	N. Pleasant		Income
90	107	Pearce, George.....	1	W $\frac{1}{2}$ 7	F
91	77	Parkins, Abraham.....	D	Pt 9	T
92	73	Parkins, John.....	D	Pt 10	F
93	82	Patton, Lewis.....	D	Pt 11	T
94	53	Paine, Benjamin.....	D	PK 3	F
95	96	Parfitt, Albion.....	S. King	2	F
96	1	Portsmouth, Peter.....	S. Bridge	5, 6	F
97	38	Peacock, Charles.....	W. Main	5	F
98	21	Pincombe, Samuel.....	N. Pleasant	1, 2, 3	F
99	35	Potter, George.....	E. York	22, 23	F

No. on Roll.	NAME.	CON. or STREET.	LOT.	
100	31 Rattray, Alexander.	W. York	18	F
101	49 Robertson, Charles.....	W. York	21, 22	F
102	20 Rogers, W. S.	E. John	1, 2	F
103	22 Rawlings, Henry.	D	P K 19	F
104	376 Smith, Cumberland.	Gore	Pt A E	F
105	146 Scott, Thomas.	1	Pt 12	F
106	145 Scott, Hugh, sen.	1	Pt 12	F
107	102 Scott, Hugh, jun.	1	Pt 5	F
108	16 Scott Matthew.	S. King	6	T
109	16 Scott, James.	S. King	6	F
110	92 Seabrook, Arthur.	D	E $\frac{1}{2}$ 7	F
111	75 Sutherland, Samuel.	D	W $\frac{1}{2}$ 9	T
112	75 Sutherland, John.	D	W $\frac{1}{2}$ 9	F
113	84 Shore, John.	D	W $\frac{1}{2}$ 12	F
114	43 Stewart, James.	E. Main	10	F
115	9 Sparkman, Edward.	S. King	E $\frac{1}{2}$, 3	F
116	133 Simmons, Charles.	D	Pt 2, 3	F
117	135 Stewart, Archibald.	D	Pt 2, 3	F
118	135 Stewart Alexander.	D	Pt 2, 3	F
119	138 Turnbull, Robert.	D	Pt 1 & 2	F
120	136 Tiffany, Albert.	D & 1	2	F
121	417 Thompson, J. L.	N. Main	10	F
122	26 Thrower, Stephen.	N. King	10	F
123	25 Thrower, Charles.	W. Main	3, 4	F
124	101 Vail, Lewis.	1	Pt 5	F
125	29 Vail, Aaron.	E. York	33, 34	F
126	23 Waggoner, Simon.	N. Mill	86, 87	F
127	419 Weld, Joseph.	1	16 in 4	F
128	144 Weylor, Christian.	1	Pt 11	F

PART II.—Persons entitled to vote at Municipal Elections ONLY.

1	3 Adams, Wm. H.	S. Bridge	3	T
2	12 Durdin, St. Leger.	S. King	S $\frac{1}{2}$ 2	O
3	69 Forsythe, Israel.	S. H. Rd	8	O
4	3 Irwin, George.	S. Bridge	3	F
5	93 Leslie, Ephraim.	1	Pt 4	T
6	37 McKay, Phillip.	W. Main	1, 2	F
7	39 Peacock, George.	N. King		F
8	67 Pincombe, John.	E. Pr. Albt	13	F
9	19 Whitehead, Daniel.	S. King	9	F
10	203 Weylor, Martin.	1	Pt 11	F

R. B.

POLLING SUB-DIVISION No. 3.

Comprising all lands in the Township of Delaware between Wards 1 and 2
on the north, and line between Lots 17 and 18 on south.

PART I.—Persons entitled to vote at BOTH Municipal Elections and Election
to the Legislative Assembly.

No. on Roll.	NAME.	CON. or STREET.	LOT.	
1 354	Adams, Samuel.....	4	N E 16	F
2 352	Allen, Henry.....	4	N W 16	F
3 352	Allen, Josephus.....	4	N W 16	F. Son
4 211	Adams, William.....	2	Pt 13	F
5 208	Adams, Thomas.....	2	S E 12	F
6 118	Anderson, Alex.....	D	Pt 14	F
7 209	Bidner, Joseph.....	2	Pt 12	F
8 351	Bell, William.....	4	Pt 16	F
9 285	Bell, Alexander.....	3	Pt 15	F
10 285	Bell, William.....	3	Pt 15	F. Son
11 342	Bodkin, William.....	4	Pt 13	F
12 342	Bodkin J. L.....	4	Pt 13	F
13 291	Burges, William.....	3	N ½ 17	O
14 220	Belton, Henry.....	2	S ½ 16	T
15 282	Bodkin, Alex.....	3	W Pt 14	F
16 216	Biggall, Thomas.....	2	W Pt 14	T
17 210	Beach, Jonas.....	2	Pt 13	F
18 210	Beach, George.....	2	Pt 13	F. Son
19 210	Beach, Earnest.....	2	Pt 13	F. Son
20 205	Bignall, William.....	2	Pt 11	F
21 205	Bignall, George.....	2	Pt 11	F
22 149	Babbington, Edward.....	1	E ½ 14	T
23 149	Babbington, Thomas.....	1	E ½ 14	F
24 147	Craig, David.....	1	Pt 13	F
25 148	Craig, Joseph.....	1	S ½ 13	F
26 339	Calcott, G. W.....	4	Pt 13	F
27 338	Campbell, Donald.....	4	12	F
28 337	Cooper, Stephen.....	4	E ½ 11	T
29 334	Carey, Edward.....	4	Pt 11	F
30 271	Caray, John.....	3	E ½ 10	F
31 268	Carley, Lafayette.....	3	W ½ 9	F
32 268	Carley, John.....	3	W ½ 9	F. Son
33 200	Carley, Alonzo.....	2	N E 9	O
34 340	Duke, Thomas.....	4	Pt 13	F
35 192	Dundas, John.....	2	N E 8	F
36 269	Element, William.....	3	N E 9	F
37 333	Field, William.....	4	W ½ 10	F
38 332	Postlett, James.....	4	Pt 10	T
39 193	Fortner, Andrew.....	2	S E 8	F
40 193	Fortner, Wesley.....	2	S E 8	F. Son
41 269	Greer, Samuel.....	3	N E 9	T
42 196	Goldie, John.....	2	Pt 8	F
43 358	Henderson, James, sen.....	4	S ½ 17	F
44 355	Hopkins, G. W.....	4	N ½ 17	F
45 279	Howlett, Joseph.....	3	Pt 13	F

P. B.

No. on Roll	NAME.	CON. or STREET.	LOT.	
46 280	Hammond, Andrew	3	Pt 13	F
47 280	Hammond, James	3	Pt 13	F. Son
48 274	Hobbs, George	3	E $\frac{1}{2}$ 11	T
49 274	Hobbs, William	3	E $\frac{1}{2}$ 11	F. Son
50 267	Hull, Francis	3	W 8	F
51 225	Hammond, John	2	N W 17	T
52 225	Hammond, Thomas	2	N W 17	T
53 219	Hall, Austin	2	S $\frac{1}{2}$ 15	F
54 219	Hall, Tom	2	S $\frac{1}{2}$ 15	F
55 202	Howlett, John	2	E 11	F
56 204	Howlett, Ephraim	2	W 12	F
57 201	Harris, Charles	2	Pt 10	T
58 198	Hughson, W. D.	2	N $\frac{1}{2}$ 9	F
59 198	Hughson, Benson	2	N $\frac{1}{2}$ 9	F. Son
60 198	Hughson, Oscar	2	N $\frac{1}{2}$ 9	F. Son
61 327	Ireland, John	4	N E 9	F
62 214	Ireland, David	2	Pt 13	F
63 121	Johnstone, John	1	W $\frac{1}{2}$ 17	F
64 126	Johnstone, Henry	1	Pt 16, 17	T
65 126	Johnstone, Thomas	1	Pt 16, 17	T
66 343	Kelly, Wm.	4	Pt 14	F
67 345	Kelley, Andrew	4	Pt 14	F
68 345	Kelley, James	4	Pt 14	O
69 283	Kaiser, John	3	E 14	T
70 150	Kennedy, Daniel	1	N E 16	T
71 353	Kelley, James	4	S E 16	F
72 332	Leaker, William	4	N E 10	F
73 292	Laughlon, Thomas	3	S $\frac{1}{2}$ 17	O
74 350	McFarlane, Alex.	4	S W 15	F
75 350	McFarlane, Geo.	4	S W 15	O
76 348	Monteith, John	4	S E 15	F
77 348	Monteith, George	4	S E 15	O
78 291	McMechan, John	3	17	F
79 291	McMechan, John H.	3	17	F
80 290	Monteith, Arch'd.	3	Pt 16	F
81 289	Monteith, A. C.	3	Pt 16	T
82 289	Monteith, Robt.	3	Pt 16	F
83 287	Monteith, Henry	3	Pt 16	F
84 222	McAuley, Henry	2	N $\frac{1}{2}$ 16	T
85 222	McAuley, Neil	2	N $\frac{1}{2}$ 16	F
86 217	McAuley, Daniel	2	Pt 15	F
87 220	Mills, Abraham	2	S $\frac{1}{2}$ 16	F
88 212	North, James	2	Pt 13	F
89 275	Oliver, George	3	E $\frac{1}{2}$ 12	T
90 276	Oliver, Henry	3	W $\frac{1}{2}$ 12	F
91 274	Peace, John	3	E $\frac{1}{2}$ 12	F
92 328	Pow, Peter	4	S E 9	F
93 331	Petch, A. W.	4	S W 9	F
94 270	Petch, William	3	S E 9	F
95 227	Powell, Charles, jun	2	E $\frac{1}{2}$ 17	F
96 227	Powell, Richard	2	E $\frac{1}{2}$ 17	F

No. on Roll.	NAME.	CON. or STREET.	LOT.	
97 330	Ryckman, David.....	4	W 9	F
98 273	Reid, Christian.....	3	Pt 11	F
99 271	Russell, Hugh.....	3	E $\frac{1}{2}$ 10	T
100 195	Ralph, Edward.....	2	NW 8	F
101 195	Shapland, Edward <i>Richard</i>	2	N W 8	T <i>R. B.</i>
102 335	Sifton, John.....	4	Pt 10	F
103 336	Sifton, Charles.....	4	Pt 10	F
104 336	Sifton, Crozier.....	4	Pt 10	O
105 278	Scott, Joseph.....	3	S $\frac{1}{2}$ 13	F
106 278	Scott, William.....	3	S $\frac{1}{2}$ 13	F
107 207	Sherk, Isaac.....	2	S$\frac{1}{2}$ 12	F <i>R. B.</i>
108 90	Summer, Daniel.....	1	Pt 15	F
109 120	Scott, Nelson.....	1	Pt 14	F. Son
110 120	Scott, Thomas.....	1	Pt 14	F. Son
111 202	Scoynes, Samuel, sen.....	2	W 10	T
112 202	Scoynes, Samuel, jun.....	2	W 10	T
113 223	Thirca, James.....	2	S W 17	F
114 346	Wilsie, Elvin.....	4	N E 15	F
115 347	Wilsie, Asa.....	4	Pt 14	F
116 284	Weylor, Jacob.....	3	E $\frac{1}{2}$ 15	F
117 281	Winter, William.....	3	E 14	F
118 272	Winnacott, Emmanuel.....	3	W $\frac{1}{2}$ 11	F
119 213	Wightman, James.....	2	W 13	T
120 203	Weylor, Martin.....	2	N W 11	F
121 122	Weld, Stephen.....	1	Pt 15	O
122 122	Weld, William.....	1	Pt 15	F
123 127	Weld, Joseph.....	1 & D	Pt 15	F
124 286	Wilson, Richard.....	3	N W 16	F
125 215	Wilson, Little.....	3	E $\frac{1}{2}$ 14	T

PART II.—Persons entitled to vote at Municipal Elections ONLY.

1 266	Blashall, Henry.....	3	W 7 & 8	F
2 266	Blashall, Tyndall.....	3	W 7 & 8	F
3 275	Godfrey, George.....	3	E $\frac{1}{2}$ 12	F
4 201	Harris, Gilbert.....	2	Pt 10	F
5 126	Johnstone, Henry, sen.....	1	Pt 15, 16	F
6 146	Scott, Thomas.....	2	Pt 13	F
7 102	Scott, Hugh, jun.....	2	W 14	F
8 325	Scott, William.....	4	E 7, 8	F
9 326	Scott, William.....	4	W 7, 8	F
10 337	Tiffany, Albert.....	4	E $\frac{1}{2}$ 11	F
11 329	Tye, Samuel.....	4	Pt 7, 8	F

POLLING SUB-DIVISION No. 4.

Comprising all lands in the Township of Delaware lying south of Lot 17.

PART I.—Persons entitled to vote at BOTH Municipal Elections and Elections to the Legislative Assembly.

No. on Roll.	NAME.	CON. or STREET.	LOT.	
1 364	Baker, Edward.....	4	Pt, 22 23 F	<i>See R.B.</i>
2 364	Baker, William.....	4	Pt, 22 23 F	
3 373	Baker, Wm. Henry.....	4	Pt 22 O	
4 372	Baker, Robt. H.....	4	W 1/2 21 F	
5 372	Baker, Samuel.....	4	W 1/2 21 F. Son	
6 362	Baker, William.....	4	S 1/2 20 F	
7 158	Brown, William.....	1	22 T	
8 305	Campbell, Colin.....	3	N 1/2 24 F	
9 303	Campbell, William.....	3	W 1/2 22 F	
10 301	Cowling, John.....	3	W 1/2 21 F	
11 302	Campbell, Nathan.....	3	E 1/2 21 F	
12 232	Campbell, Wm. J.....	2	E 19 F	
13 228	Campbell, Samuel.....	2	N 1/2 18 F	
14 154	Campbell, Henry.....	1	S E 18 F	
15 370	Dores, James.....	4	N 1/2 24 F	
16 230	Dark, James.....	2	Pt 18 F	
17 166	Daugharty, Henry.....	1	W 1/2 24 F	
18 366	Elwood, John.....	4	Pt 22 F	
19 238	Ferguson, Francis.....	2	E 21 F	
20 163	Fisher, John.....	1	Pt 24 F	
21 162	Gordon, John.....	D	E 24 F	
22 371	Hunt, John N.....	4	S 1/2 24 F	
23 369	Hicks Charles.....	4	S E 23 F	
24 356	Henderson, Alex., sen.....	4	N W 19 F	
5 357	Henderson, James.....	4	S W 19 F	
6 304	Henderson, William.....	3	Pt 21 F	
27 242	Harshaw, R. J.....	2	E 1/2 24 F	
28 304	Henderson, Alex., jun.....	3	Pt 21 O	
29 231	Jones, William.....	2	N W 19 F	<i>J. R.B.</i>
30 153	Jones, Henry.....	1	N 1/2 19 F	
31 151	Kennedy, Thos.....	1	N E 18 F	
32 165	Lewis, William.....	1	S E 24 F	
33 165	Lewis, Andrew.....	1	S E 24 F	
34 128	Leach, George, sen.....	D	19 F	
35 128	Leach, John.....	D	19 F. Son	
36 128	Leach, William.....	D	19 F. Son	
37 249	Leach, Geo., jun.....	2	Pt 22 T	
38 365	Mann, G. A. W.....	4	Pt 22 F	
39 363	McCully, Samuel.....	4	N E 21 F	
40 238	McCully, James.....	2	E 21 T	
41 238	McCully, John.....	2	E 21 T	
42 360	McFarlane, John, sen.....	4	S 1/2 18 F	

No. on Roll.	NAME.	CON. or STREET.	LOT.	
43 360	McFarlane, John, jun.....	4	S $\frac{1}{2}$ 18	F. Son
44 360	McFarlane, Alexander.....	4	S $\frac{1}{2}$ 18	F. Son
45 296	Malone, George.....	3	N E 19	F
46 297	Malone, James.....	3	W $\frac{1}{2}$ 19	F
47 294	McCully, Henry.....	3	W $\frac{1}{2}$ 18	F
48 294	McCully, Thompson.....	3	W $\frac{1}{2}$ 18	F
49 243	McPherson, Donald.....	2	W $\frac{1}{2}$ 24	F
50 241	McGugan, John.....	2	N E 23	F
51 239	McPherson, Donald.....	2	S $\frac{1}{2}$ 22	F
52 235	McNichol, Neil.....	2	W 21	F
53 234	McPherson, Hugh.....	2	20	F
54 161	McArthur, Peter.....	1	E $\frac{1}{2}$ 23	F
55 159	McCallum, James.....	1	W $\frac{1}{2}$ 23	F
56 155	McPherson, Duncan.....	1	E $\frac{1}{2}$ 21	F
57 156	McPherson, Hector.....	1	S $\frac{1}{2}$ 20	F
58 298	May, James.....	3	Pt 20	F
59 306	Orr, John.....	3	23	F
60 359	Parsons, Thomas.....	4	N $\frac{1}{2}$ 18	F
61 293	Parsons, Elnathan.....	3	E $\frac{1}{2}$ 18	F
62 233	Powell, Charles, sen.....	2	S W 19	F
63 367	Stanton, James.....	4	E $\frac{1}{2}$ 23	F
64 367	Stanton, J. T.....	4	N $\frac{1}{2}$ 23	F. Son
65 367	Stanton, Edgar.....	4	N $\frac{1}{2}$ 23	F. Son
66 300	Scott, Wm, Simpson.....	3	N W 20	F
67 299	Scott, Robert.....	3	Pt 20	F
68 152	Scott, Job.....	2	S $\frac{1}{2}$ 18	F
69 229	Scott, Charles.....	2	Pt 18	F
70 368	Thom, James.....	4	S E 23	F
71 157	Thompson, Archd.....	1	N $\frac{1}{2}$ 20	T
72 361	Weekes, Thomas.....	4	Pt, 19 20	F
73 361	Weekes, William.....	4	Pt, 19 20	F

PART II.—Persons entitled to vote at Municipal Elections ONLY.

1 158	Kennedy, Henry.....	1	22	F
2 122	Weld, Stephen.....	1	Pt 18	T
3 122	Weld, William.....	1	Pt 18	F

I, R. BODKIN, Clerk of the Municipality of Delaware, in the County of Middlesex, do hereby certify that part one of the within list constitutes a correct list for the year 1878 of all persons appearing by the last revised Assessment Roll of the said Municipality to be entitled to vote at Elections for Members of the Legislative Assembly; and that parts one and two constitute a correct list for said year of all persons appearing by the said roll to be entitled to vote at Municipal Elections in said Municipality; and I hereby call upon all electors to examine the said list, and if any omissions or other errors are perceived therein, to take immediate proceedings to have the said errors corrected according to law.

Dated this 26th day of June, 1878.

R. BODKIN,

CLERK OF DELAWARE,

Delaware P. O

GAHCO DEC-6 18 X 7 VSI / E

GAHGD DEC-Q 18 X 7 VSIF LE

