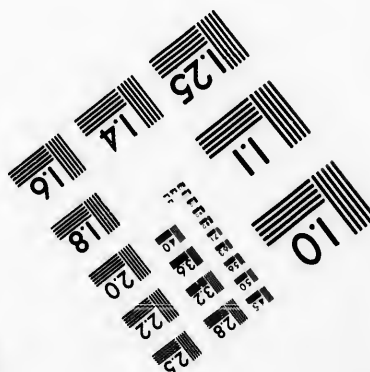
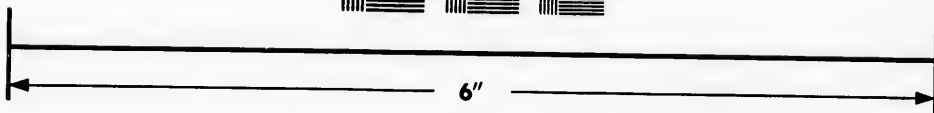
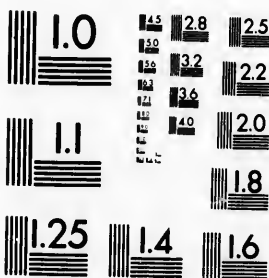


**IMAGE EVALUATION  
TEST TARGET (MT-3)**



**Photographic  
Sciences  
Corporation**

23 WEST MAIN STREET  
WEBSTER, N.Y. 14580  
(716) 872-4503

**CIHM  
Microfiche  
Series  
(Monographs)**

**ICMH  
Collection de  
microfiches  
(monographies)**



Canadian Institute for Historical Microreproductions / Institut canadien de microreproductions historiques

**© 1993**

Technical and Bibliographic Notes / Notes techniques et bibliographiques

The Institute has attempted to obtain the best original copy available for filming. Features of this copy which may be bibliographically unique, which may alter any of the images in the reproduction, or which may significantly change the usual method of filming, are checked below.

L'Institut a microfilmé le meilleur exemplaire qu'il lui a été possible de se procurer. Les détails de cet exemplaire qui sont peut-être uniques du point de vue bibliographique, qui peuvent modifier une image reproduite, ou qui peuvent exiger une modification dans la méthode normale de filmage sont indiqués ci-dessous.

Coloured covers/  
Couverture de couleur

Coloured pages/  
Pages de couleur

Covers damaged/  
Couverture endommagée

Pages damaged/  
Pages endommagées

Covers restored and/or laminated/  
Couverture restaurée et/ou pelliculée

Pages restored and/or laminated/  
Pages restaurées et/ou pelliculées

Cover title missing/  
Le titre de couverture manque

Pages discoloured, stained or foxed/  
Pages décolorées, tachetées ou piquées

Coloured maps/  
Cartes géographiques en couleur

Pages detached/  
Pages détachées

Coloured ink (i.e. other than blue or black)/  
Encre de couleur (i.e. autre que bleue ou noire)

Showthrough/  
Transparence

Coloured plates and/or illustrations/  
Planches et/ou illustrations en couleur

Quality of print varies/  
Qualité inégale de l'impression

Bound with other material/  
Relié avec d'autres documents

Continuous pagination/  
Pagination continue

Tight binding may cause shadows or distortion along interior margin/  
La reliure serrée peut causer de l'ombre ou de la distorsion le long de la marge intérieure

Includes index(es)/  
Comprend un (des) index

Blank leaves added during restoration may appear within the text. Whenever possible, these have been omitted from filming/  
Il se peut que certaines pages blanches ajoutées lors d'une restauration apparaissent dans le texte, mais, lorsque cela était possible, ces pages n'ont pas été filmées.

Title on header taken from:/  
Le titre de l'en-tête provient:

Title page of issue/  
Page de titre de la livraison

Caption of issue/  
Titre de départ de la livraison

Masthead/  
Générique (périodiques) de la livraison

Additional comments:/  
Commentaires supplémentaires:

This item is filmed at the reduction ratio checked below/  
Ce document est filmé au taux de réduction indiqué ci-dessous.

10X	12X	14X	16X	18X	20X	22X	24X	26X	28X	30X	32X
				/							

The copy filmed here has been reproduced thanks to the generosity of:

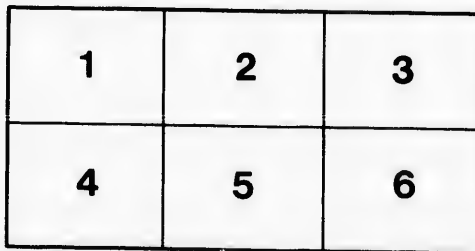
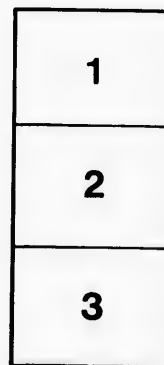
National Library of Canada

The images appearing here are the best quality possible considering the condition and legibility of the original copy and in keeping with the filming contract specifications.

Original copies in printed paper covers are filmed beginning with the front cover and ending on the last page with a printed or illustrated impression, or the back cover when appropriate. All other original copies are filmed beginning on the first page with a printed or illustrated impression, and ending on the last page with a printed or illustrated impression.

The last recorded frame on each microfiche shall contain the symbol  $\rightarrow$  (meaning "CONTINUED"), or the symbol  $\nabla$  (meaning "END"), whichever applies.

Maps, plates, charts, etc., may be filmed at different reduction ratios. Those too large to be entirely included in one exposure are filmed beginning in the upper left hand corner, left to right and top to bottom, as many frames as required. The following diagrams illustrate the method:



L'exemplaire filmé fut reproduit grâce à la générosité de:

Bibliothèque nationale du Canada

Les images suivantes ont été reproduites avec le plus grand soin, compte tenu de la condition et de la netteté de l'exemplaire filmé, et en conformité avec les conditions du contrat de filmage.

Les exemplaires originaux dont la couverture en papier est imprimée sont filmés en commençant par le premier plat et en terminant soit par la dernière page qui comporte une empreinte d'impression ou d'illustration, soit par le second plat, selon le cas. Tous les autres exemplaires originaux sont filmés en commençant par la première page qui comporte une empreinte d'impression ou d'illustration et en terminant par la dernière page qui comporte une telle empreinte.

Un des symboles suivants apparaîtra sur la dernière image de chaque microfiche, selon le cas: le symbole  $\rightarrow$  signifie "A SUIVRE", le symbole  $\nabla$  signifie "FIN".

Les cartes, planches, tableaux, etc., peuvent être filmés à des taux de réduction différents. Lorsque le document est trop grand pour être reproduit en un seul cliché, il est filmé à partir de l'angle supérieur gauche, de gauche à droite, et de haut en bas, en prenant le nombre d'images nécessaire. Les diagrammes suivants illustrent la méthode.

qu'il  
cet  
de vue  
ge  
ation  
ués

**HAND-GUIDE** 6 25

TO

*MONTREAL*

WITH

**Map of the City**

ILLUSTRATED.

---

**PRICE, 25 CENTS.**

---

*J. S. BRAZEAU, Publisher,*  
Prop'r St. Lawrence Hall News & Fancy Goods Depot,  
**MONTREAL.**

1876.

AC901  
P3  
no. 0330  
P117

**INSURANCE AGAINST ACCIDENTS.**

**THE ACCIDENT**

**Insurance Company of Canada.**

The only purely CANADIAN ACCIDENT COMPANY solely devoted to Insurance against Accidents.

PRESIDENT:

**SIR A. T. GALT, K.C.M.G.**

MANAGER AND SECRETARY:

**EDWARD RAWLINGS,**

103 ST. FRANCOIS XAVIER ST., MONTREAL.

**SURETYSHIP.**

**THE CANADA**

**GUARANTEE COMPANY**

MAKES THE

**Granting of Bonds of Suretyship**

**ITS SPECIAL BUSINESS.**

Each employee can now be SURETY FOR HIMSELF by the payment of a trifling annual sum to this Company.

The full deposit of \$50,000 has been made with the Government. It is the only GUARANTEE COMPANY that has made any Deposit.

HEAD OFFICE: 103 ST. FRANCOIS XAVIER ST., MONTREAL.

President—SIR A. T. GALT.

MANAGER—**EDWARD RAWLINGS.**

NATIONAL LIBRARY

CANADA

BIBLIOTHEQUE NATIONALE



purchases

S.

NT

y solely

S,

NY

ip.

LF by

h the  
that

L.



LN

purchases advantageous in the extreme.



REFERENCES

1. St. Ann's Church.
2. St. Gabriel St. Church.
3. City Gas Works.
4. St. Stephen's Church.
5. Prot. Orphan Asylum.
6. English Cathedral.
7. Exhibition Building.
8. Nat. Hist. Soc. Museum.
9. St. Andrew's Church.
10. Ch. of the Messiah.
11. Cath. Oph. Asylum.
12. St. Patrick's Church.
13. St. George's Church.
14. La Chaine R. Depot.
15. College de Montreal.
16. Grey Nunnery.
17. St. Ann's Market.
18. Recollet Church.
19. American Church.
20. St. James Club.
21. Mer. Lib. Library.
22. Mechanics Institute.
23. St. James Church.
24. St. Lawrence Hall.
25. Molsons Bank.
26. B. B. N. America.
27. Post Office.
28. Lou & Liv. FA. Offices.
29. Banque du Peuple.
30. Montreal Bank.
31. City Bank.
32. Place d'Armes.
33. Seminary of St. Sulpice.
34. R. C. Parish Church.
35. Hotel Dieu (Old Site).
36. Custom House.
37. Geological Museum.
38. Free Church.



By  
price  
omah  
The Hou  
to patronize  
purchases at via

The Portland Dock & Ship Co. Montreal

--- -- OUTLINE OF PROPOSED CANAL & HYDRAULIC WORKS

SCALE OF  
1000 2000 3000  
1 MILE.

POCKET MAP OF THE CI





REFERENCES

- 39. Court House.
- 40. Jesuits College.
- 41. Ladies Ben. Inst.?"
- 42. St. Law<sup>d</sup> Market.
- 43. Ben Bisteur.
- 44. St. James Church
- 45. German Church.
- 46. General Hospital.
- 47. Bonsecours Market.
- 48. Barracks.
- 49. Military Hospital.
- 50. St. Luke's Chapel.
- 51. Molson's College.
- 52. Molson's Church.
- 53. St. John's Church.
- 54. Jewish Synagogue.
- 55. Montreal House.
- 56. Zion Church.
- 57. English Free Church.
- 58. Ottawa Hotel.
- 59. Donegana's Hotel.
- 60. Baptist Church.

**NOTRE DAME STREET**  
**ELEGANT STORES.**  
 DEY GOODS,  
**H. H. MERRILL.**  
 A. A. MURPHY,  
 Cheap Bids, 437 and 439.  
**STE. MARIE BROTHERS,**  
 Specialty in Laces, Silk Shawls  
 and Mantels, 454.  
**FURRIERS.**  
**MESSES. THIBAUT & LAFITTE.**  
 First Price Furriers, 371.  
**OPTICIAN.**  
**HEARN & HARRISON,**  
 Wholesale and Retail, 303 & 304.  
**ALEX. HENDERSON,**  
 Canadian Landscape & Pho-  
 tographer.  
**G. A. GAGNON,**  
 Gentlemen's Furnishing Store, 300.  
**J. G. KENNEDY,**  
 Clothier & Merchant Tailor,  
 21 St. Lawrence Main St.  
**W. NOTMAN,**  
 First Price Photographer to the  
 Queen, Biouly Street.  
**St. James St. Attractions.**  
**J. G. PARKS,**  
 First Price Photographer, 106 1/2.  
**MARCHANT & LABRE,**  
 Bankers, Exchange and Stock  
 Brokers, Corner St. James & St.  
 Francois Xavier Streets.  
**MEDICAL HALL.**  
**PLACE D'ARMY, DRUG STORE.**  
**RICHELIEU & OTTAWA NAVIGA-  
 TION COMPANY.**  
**THE CANADIAN LIFE ASSURANCE**  
**INSURANCE COMPANY,**  
 Corner Notre Dame & St. Francois  
 Xavier Streets.

..... LINE OF GREAT INUNDATION 14 and 15 APRIL 1861.

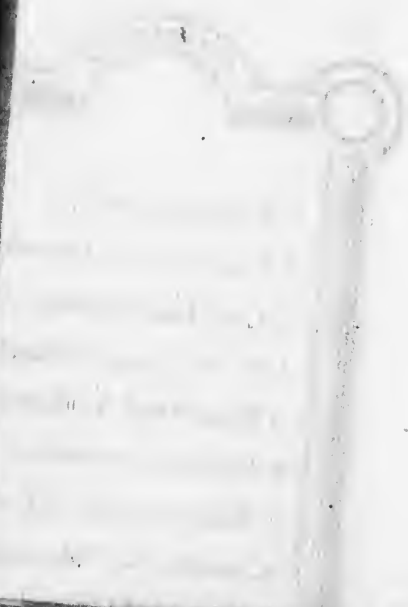
SCALE OF FEET  
 1000 2000 3000 4000 5000 6000  
 1 MILE.

P OF THE CITY OF MONTREAL.

AC901  
P3

no. 0330

Pf++



38

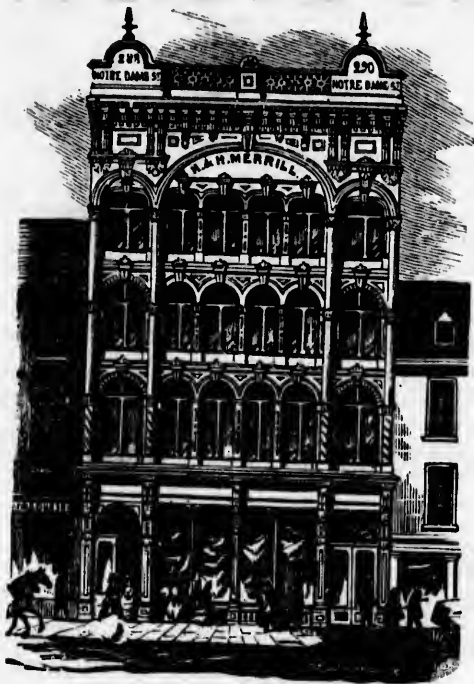
3

CANADA  
BIBLIOTHEQUE NATIONALE

This E  
nd in the  
By hea  
prietor  
asonable  
The Ho  
no patro  
purchases

# H. & H. MERRILL,

(Established 1843)



3 & 290 NOTRE DAME STREET

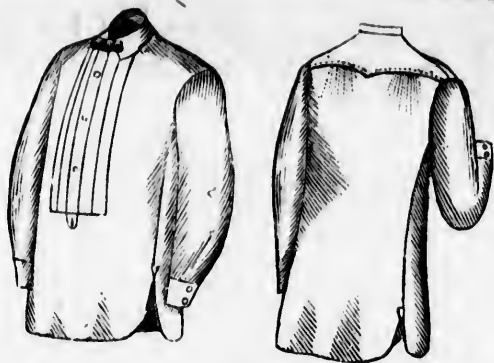
*Near French Cathedral,*

**MONTREAL, P. Q.**

This Establishment is one of the largest and most extensive of its kind in the Dominion.

By heavy importations direct from European Manufacturers, the proprietors are enabled to sell RICH and ELEGANT GOODS at as reasonable rates as can be realized in Paris or London.

The House is well known to American and European Tourists, who patronize this Establishment throughout the year, and find their purchases advantageous in the extreme.



**C. A. CACNON**

IMPORTER OF

**GENTLEMEN'S FURNISHING GOODS.**

—:—

*Shirts Made to Order on an Entirely New Pattern.*

**300 NOTRE DAME STREET,  
MONTREAL.**

—:—

It will well repay the stranger to pay our Establishment a visit, as we defy competition in our line.

**300 NOTRE DAME STREET.**

# HAND-GUIDE

TO

## MONTREAL

WITH MAP OF THE CITY

*Containing all necessary Information and  
advice for Strangers, including rates of Money,  
Carriage tariff, Institutions and other  
places of interest to visit—  
When and how to see them—Fancy and  
Fashionable Stores, &c.*

---

**PRICE, 25 CENTS.**

---

J. S. BRAZEAU,

Publisher, and Proprietor News and Telegraph Office.

ST. LAWRENCE HALL,

*MONTREAL.*

*ST. LAWRENCE HALL*

## **News & Fancy Goods Store**

Has constantly on hand the finest selection of **Opera and Marine Glasses** selected from the best makers in Europe, Bardon & Lemaire, and other well known manufacturers.

Agent for Lazarus, Morris & Co.'s celebrated **PERFECTED SPECTACLES & EYE-GLASSES.**

A fine assortment on hand in Steel, Shell and Gold.

No Tourist should neglect obtaining a pair of his fine Skeleton Smoke Eye-Glasses, a sure protection to the Eye against the glare of the sun. A large assortment of

### **POCKET BOOKS AND PURSES**

in Russia Leather, Pearl and Turtoise Shell.

Stereoscopic Views of all parts of the world.  
Photographs of Celebrities, &c.

**J. S. BRAZEAU,**

**ST. LAWRENCE HALL,  
MONTREAL.**

**ALL**  
**s Store**

t selection of  
**ses** selected  
on & Lemaire,

's celebrated  
**E-GLASSES.**  
ell and Gold.  
g a pair of his  
ure protection  
sun. A large

**PURSES**

Shell.  
of the world.

**U,**  
**HALL,**





CHURCH OF NOTRE DAME.



COURT HOUSE.



CUSTOM HOUSE.



BANK OF MONTREAL.



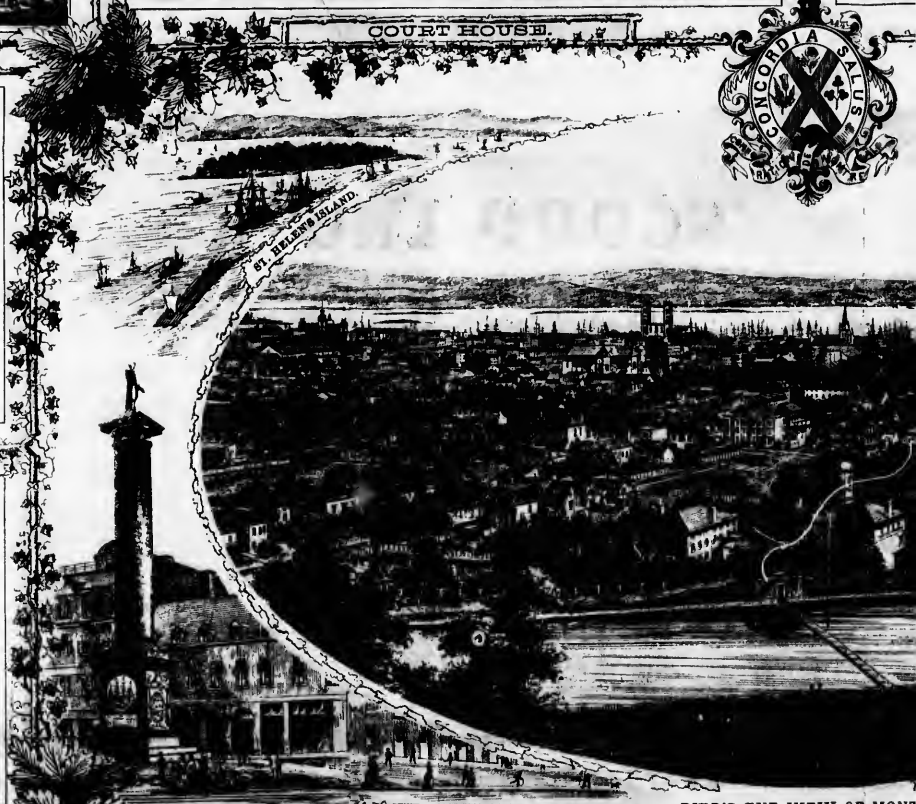
ST. ANDREW'S CHURCH.



MONTREAL TELEGRAPH CO.



NEW CITY HALL.



BIRD'S-EYE VIEW OF MONTREAL FROM THE MOUNTAIN.







BONSECOURS MARKET.



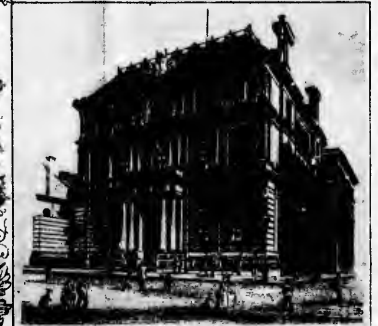
THE NEW R. C. CATHEDRAL.



BIRD'S-EYE VIEW OF MONTREAL FROM THE MOUNTAIN.



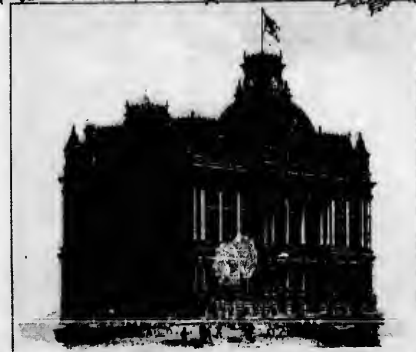
THE Y. M. C. A. BUILDING.



MOLSON'S BANK.



NEW CITY HALL.



THE NEW POST OFFICE.



CHRIST CHURCH CATHEDRAL.

MONTREAL AND ITS PUBLIC BUILDINGS.

**S. F. E. MARIE B.**



IMPORTERS OF

**FRENCH, ENGLISH,**

AND

**GERMAN**

**DRY GOODS.**

NOT

**E BROTHERS,**

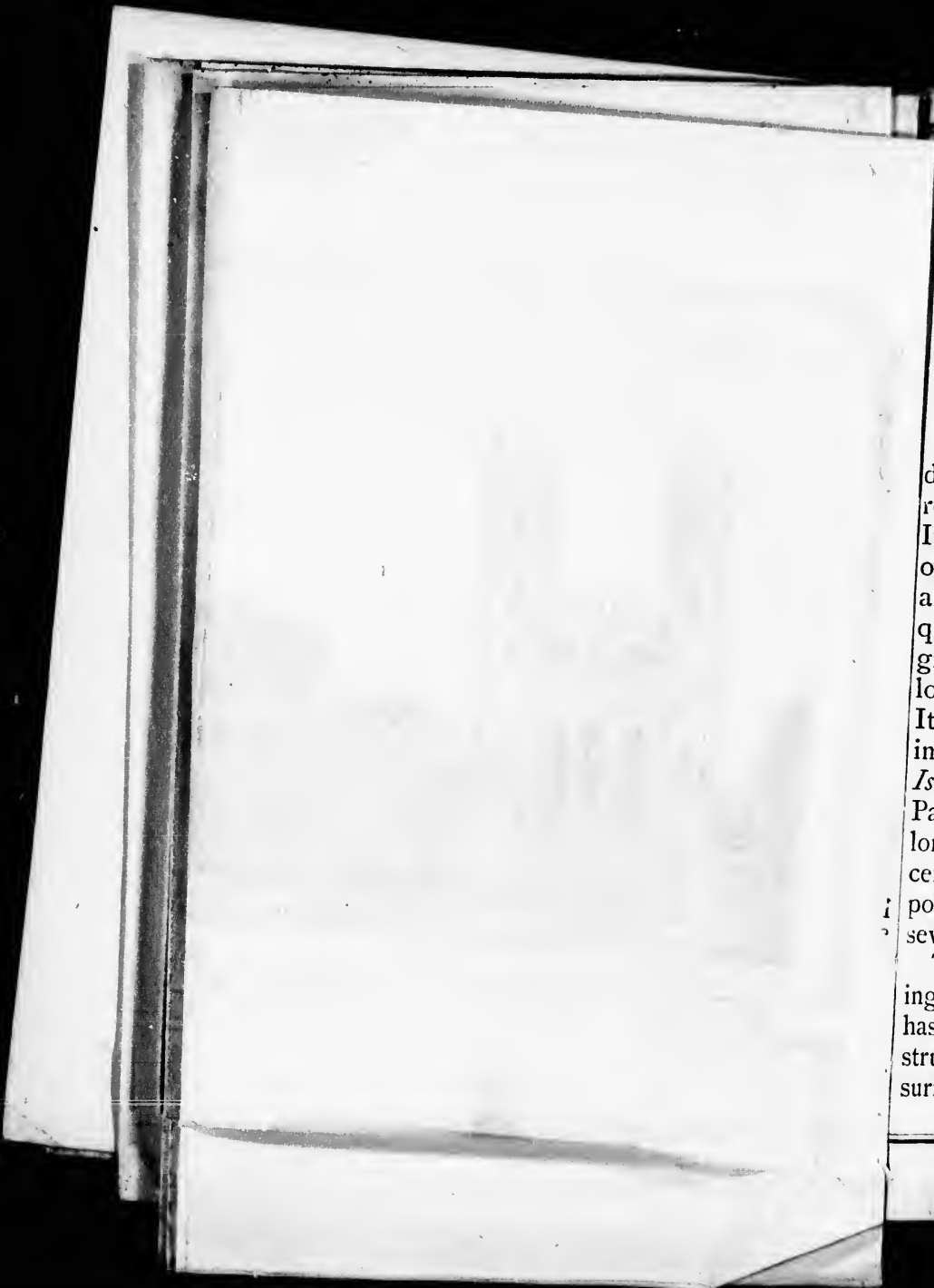


**454**

**NOTRE DAME STREET,**

NEAR MCGILL,

***MONTREAL.***



d  
re  
It  
of  
an  
qu  
gr  
lo  
It  
in  
*Isa*  
Pa  
lon  
cer  
i por  
sev  
ing  
has  
stru  
sur

## MONTREAL.

---

IT is known that the history of this City dates back to the time when the redman reigned on the banks of the St. Lawrence. It was founded in 1642, not far from the site of the early Indian village of Hochelaga, and its first name was Ville-Marie. It subsequently took that of *Mount Royal*, from the grand elevation which immediately overlooks it, now so well known as the mountain. It is situated on the magnificent St. Lawrence, in view of *St. Helen's Island*, *Isle Ronde*, *Isle aux Fraises*, *Moffatt's Island*, and *St. Paul's or Nuns' Island*. latitude  $45^{\circ}30'21''$  N., longitude  $72^{\circ}33'30''$  W. Population of latest census, 160,000 inhabitants. The City Corporation consists of a Mayor and twenty-seven members, designated Aldermen.

The city improvements are rapidly extending, and a large extent of mountain property has been lately secured with a view to constructing a Public Park on a scale and with surroundings which will not be surpassed on

After seeing the Church of Notre-Dame, Mount Royal Cemetery, and the other familiar sights of Montreal, we would invite the inquisitive strangers to pay a visit to the celebrated

## **CLOTHING STORE**

OF

**J. G. KENNEDY & CO.,**

**31 & 33 St. Lawrence Main Street.**

Which will amply repay them for their trouble. It speaks well for the enterprise of some of the merchants of this city, who are fast outstripping those of New York and London, so far as **CHEAPNESS, ELEGANCE and MATERIAL** are concerned.

This firm employs the very best cutters to be found on the Continent, and if they hear of one who has made his mark in Paris, spare neither money nor pains to secure him for their establishment, so that their customers and patrons can rest assured of being dressed at all times in the prevailing fashion, that is to say, they will wear clothes of the best material and the most elegant finish at a minimum cost.

The **READY-MADE DEPARTMENT** is a copy of the cutting, so that gentlemen who are pressed for time or do not like the trouble of being measured, can have their clothing exactly the same. Every article made on the premises, and the same care and attention bestowed on their manufacture as if made to order.

**J. G. KENNEDY & CO.,**

**31 & 33 ST. LAWRENCE MAIN STREET.**

ount Royal  
ontreal, we  
visit to the

**RE**

**CO.,**

**reet.**

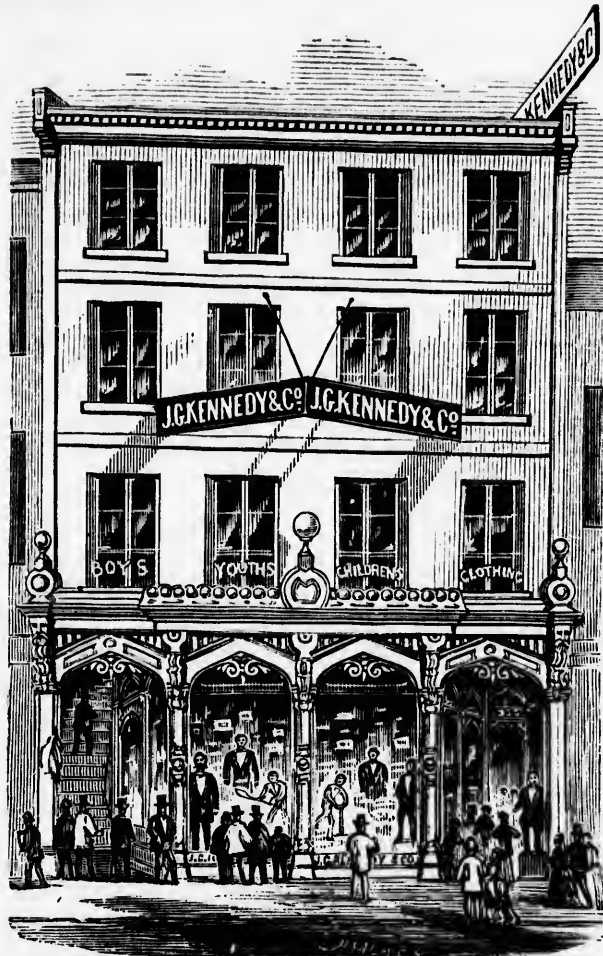
It speaks  
this city,  
and London,  
are con-

and on the  
his mark  
e him for  
d patrons  
e prevail-  
es of the  
nimum

e cutting,  
t like the  
g exactly  
and the  
acture as

**CO.,**

**REET.**



**J. G. KENNEDY & CO.,**

**31 & 33 ST. LAWRENCE MAIN STREET.**

the American Continent. Besides the many Churches, Convents, Colleges, Charitable Institutions, all of which are referred to in detail in the following pages, there are several Establishments in this City to visit, which would well repay the business man, the lover of science, and the friend of progress. Amongst those are the City Gas Works, Water Works, Gould's extensive Mills, Hudon's Cotton Factory, Redpath's Sugar Factory, the Natural History Society's Museum, the Mechanics' Institute, the Mercantile Library, and the Geological Museum.

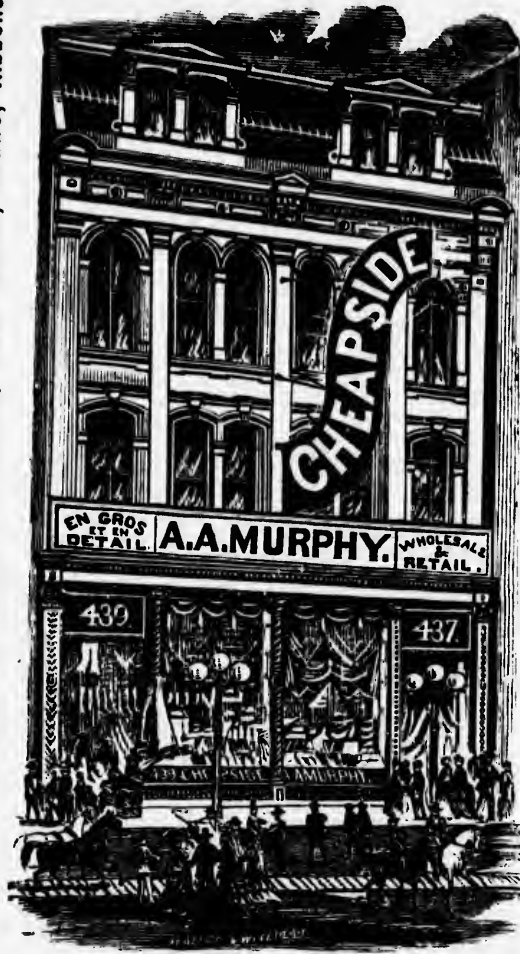
The Hotel accommodation may be said to be respectable in extent and quality, the principal establishments being the St. Lawrence Hall, the Ottawa, the Albion and the Montreal House; but a grand enterprise in this line is now being realized by the construction of the Windsor Hotel, in a fashionable and otherwise most desirable locality, at the very base of the Mountain. This building, in the Italian style of architecture, will be 250 feet square, with a tower on the Peel and Dorchester Street corner. From the sidewalk to the top of the balustrade, which will surmount the roof of the building proper, the height will be 100 feet, and to the top of the tower 140. The several fronts



**CHEAPSIDE (Established 1819.)**

**Umbrellas, Parasols, Silk Scarfs & Mantles, Real Laces, Shawls, Ribbons,**

**Black Silks, Colored Silks, Silk Velvet, Irish Poplins, Kid Gloves, Cuffs, &c.**



**A. A. MURPHY,**  
437 & 439 Notre Dame Street, Montreal.

will be of cut stone ; there will be four hundred rooms, and accommodation for one thousand guests. The dining-room will be on the second story—dimensions, 132x52 feet ; the ladies' ordinary or dining-room will be 56x42. Leading to the large dining-room will be a nice passage 112x30, divided by a row of columns. In this will be an alcove for a band, and here guests will promenade in the evening. The rooms are all of good size and well lighted, a wide court giving light to the inner rows. There will be a number of suites of rooms, each furnished with a bath, wardrobe, &c. ; also a stylish bridal suite. Guests will be conveyed to the different flats by elevators ; but for elderly people and others who do not care to be located up-stairs, there will be plenty of rooms on the office-flat. The Hotel will be heated with steam throughout. The system of communication will be by electric bells to an office, whence a clerk will convey the orders to the several departments. It is stated on authority that the appointments of the Windsor will be equal, if not superior, to any Hotel on the continent ; and that it will be fully completed during 1876, at a cost of not less than half a million dollars.

In approach to the City of Montreal by

water, the stranger's eye is soon attracted by the long line of cut-stone buildings which fronts the river and which are alike solid and elegant in style; and as he nears the shore, he is also led to admire an extensive range of wharves, built of first-class limestone, and unsurpassed in strength and workmanship by any in America, perhaps in the world.

It would be simply improper to close this sketch without referring to the stupendous VICTORIA BRIDGE, spanning the St. Lawrence from the western extremity of the City. The cost of this tubular wonder was not less than EIGHT MILLIONS OF DOLLARS. There are 25,000 tons of stone, and 7,500 tons of iron embedded in it; the contents of its masonry are three millions of cubic feet, and its total length from bank to bank is 10,284 feet, or about 50 yards less than two English miles.

### VALUE OF SILVER COINS.

United States Half-Dollar . . . . .	45	cts.
do Quarters . . . . .	20	"
do Ten Cents . . . . .	8	"
do Five Cents . . . . .	4	"
British Shillings . . . . .	24	"
do Sixpence . . . . .	12	"
Canadian Silver at par.		

---

## AN ADVICE TO THE STRANGER.

---

In arriving in Montreal, the visitor should by all means get the Hand-Guide and Map of the City, in which he will find carters' tariff, and rates of money. Be sure also and get your American paper exchanged for Canadian, as some stores would take that advantage of charging you double for any goods you might purchase. Also, to prevent this, we give you in this book a list of the principal stores where you will be certain to get the value of your money. We advertise none but those we can strongly recommend.

---

---

**ALEX. HENDERSON,**

*Landscape Photographer.*

**HONORABLE MENTION, Paris and London.**

**PRIZES IN LONDON AND CANADA.**

—ALSO,—

**THE ANTHONY PRIZE,**

For best Landscape, U. S., 1874.

**CANADIAN PHOTOGRAPHS IN GREAT VARIETY.**

# T A R I F F

OF

## FARES FOR HACKNEY CARRIAGES FOR 1876-77.

### ONE HORSE VEHICLES.

From any place to any others, provided the time occupied do not exceed twenty minutes.

1 or 2 persons.....	25 cents.
3 or 4 ".....	50 "

From any place to any others, provided the time occupied do not exceed half an hour.

1 or 2 persons.....	40 cents.
3 or 4 persons.....	60 "

When the drive exceeds the time limited as aforesaid, hour rates to be charged.

BY THE HOUR.—For the first hour—

1 or 2 persons.....	75 cents.
3 or 4 persons.....	\$1.00

For every subsequent hour—

1 or 2 persons.....	60 cents.
3 or 4 ".....	75 "

### TWO-HORSE VEHICLES.

From any place to any others, provided the time occupied do not exceed 20 minutes—

1 or 2 persons.....	50 cents.
3 or 4 ".....	65 "

From any place to any others, provided the time occupied do not exceed half an hour—

1 or 2 persons.....	65 cents.
3 or 4 ".....	75 "

When the drive exceeds the time limited as aforesaid, hour rates to be charged.

BY THE HOUR.

1 or 2 persons.....	\$1.00
3 or 4 ".....	1.25

Fractions of hours to be charged at PRO RATA hour rates—but not less than one quarter of an hour shall be charged when the time exceeds the hour.

Fifty per cent to be added to the tariff rates for rides from twelve midnight to four a. m.

The tariff by the hour shall apply to all rides extending beyond the city limits where the engagement is made in the city.

### BAGGAGE.

For each trunk or box carried in any vehicle.....10 cents.

But no charge shall be made for travelling bags, valises, boxes or parcels which passengers can carry by the hand.

Sec. 12.—Each coachman shall provide and carry about him cards in the form prescribed by the Police Committee, containing the number and tariff of his vehicle, and such information as the Police Committee may direct; and such coachman shall give one of such cards to any passenger applying for the same.

**J. G. PARKS,**  
**FIRST PRIZE**  
**PHOTOGRAPHER,**

*And well known to the Tourists as the best on this  
Continent.*

Having lately undergone large expenses in improving his Photographic Galleries, &c., it will repay the lover of fine arts to pay him a visit.

We make all kinds of Photographs and Paintings, and endeavor to please all parties who favor us with their patronage. We have the negatives made by Mr. Inglis, and will supply parties with their Photographs from the same. We have a large and fine assortment of Stereoscopic Views, among which are the far-famed Yosemite Valley, Sierra Nevada Mountains, Volcanos, Aloddy Canyon, Large Trees and Grand Water Falls; then we have Niagara Falls, Lakes George, Champlain, and Hudson River; also Montreal, Quebec, Ottawa and a few Scotch Views, all of which we publish and sell wholesale and retail. Parties are welcome to our reception-room to spend an hour or more in examining our work.

**J. G. PARKS,**  
**PHOTOGRAPHER,**  
195½ St. James Street,  
**MONTREAL.**

## Roman Catholic Institutions and Churches.

### PARISH CHURCH OF VILLE-MARIE.

#### CATHEDRAL OF MONTREAL.

Generally, but improperly, called by British residents the French Cathedral—is, in point of dimensions and area, the pride of Montreal. The great towers seen from afar off bear no inconsiderable resemblance to that of Notre Dame on the banks of the Seine. The corner stone of the edifice, which is built in the perpendicular gothic style of the middle ages, was laid on the 3rd September, 1824, and it was opened for public worship in 1829. It was originally intended to make it much larger than it is at present. The height of the towers is 220 feet; the rear window at the high altar, which is filled with beautiful stained glass, is 64 feet high and 33 feet wide. The Church is capable of accommodating over seven thousand persons. In the north-east tower is a fine chime of bells, and in the north-west tower is placed the largest bell in America, cast expressly for this Church and weighing 29,400 lbs.; its sound is very remarkable. This tower is open to the public for a small fee; from the top a splendid view of

the River St. Lawrence, the Island of Montreal, St. Helen's Island, Victoria Bridge, and the surrounding country, is presented. This Church is now undergoing repairs which will not cost less than \$50,000, to make it the finest church on the Continent of America.

#### CHURCH OF THE GESU,

situated on Bleury Street, is, in the opinion of many, the most beautiful Church edifice in America. The style of architecture is the Round Roman Arch; it is 194 feet long, and 96 wide, but at the transept the transversal nave is 144 feet long. The height of the two naves is 75 feet. The Gesu forms a perfect cross. The head of the cross is formed by the sanctuary. The interior is frescoed in the most elaborate manner. Over the high altar is a beautiful fresco representing the Crucifixion of Our Lord. Higher up the centre piece is a scene from the Apocalypse. On the ceiling of the sanctuary the Shepherds are seen adoring the new-born Savior. There are also in the Church several very fine paintings. The Church of the Gesu is attached to St. Mary's College, and both belong to the Jesuit Fathers.



## ST. PATRICK'S CHURCH

stands on an elevated site at the corner of St. Alexander and Lagachetière Streets, and is one of the most striking objects visible on approaching the City. This large and commanding building is in gothic style of architecture; the length is 240 feet by 90 feet in breadth; the spire is 225 feet high. The interior is comfortably and handsomely fitted up, with room for over 5000 worshippers. Taken altogether, this is a splendid model of ecclesiastical architecture.

---

**PLACE D'ARMES DRUG STORE,**

*Cor. St James & Place d'Armes,*

**MONTREAL.**

**JAMES HAWKES,**

**PHARMACIST,**

**LATE OF LONDON AND PARIS,**

Has a complete assortment of DRUGS, CHEMICALS, PERFUMERY, TOILET ARTICLES and PATENT MEDICINES, English, French and American.

Prescriptions are carefully prepared with accuracy and despatch,  
ICED SODA WATER with delicious SYRUPS,

AT THE

**PHARMACY, PLACE D'ARMES.**

## ST. ANN'S CHURCH,

on McCord Street, at the junction with Basin Street, is a handsome stone building in the gothic style of architecture, and will seat about 1,500 persons.

## ST. JAMES' CHURCH.

This handsome building is situated on St. Denis Street. Erected on the ruins of the one destroyed by the fire of 1852, known as the Bishop's Church, which was of the Roman Ionic style, but altered in form and extended in length, is now built after the most admired specimens of the early pointed style; it is a fine example of what is sometimes called Christian architecture. The windows are of stained glass.

## THE CANADIAN ST. PETER.

There is now in course of erection a Cathedral unequalled on the Continent, for size and imposing appearance. In 1852, the old Cathedral and Episcopal Palace which for so long had stood on St. Denis Street, were destroyed by fire. Shortly after, a Parish Church was built on the old site in the East End, and the Bishop removed to new and

roomy quarters in the large and plain-looking brick mansion on Palace Street, which he now occupies. A few years later, by the purchase of a portion of the estate of the late Jacob de Witt, and a section of ground from the Fabrique of the Parish of Notre Dame, used as a cemetery, Bishop Bourget had under control a large block of land in an elevated position, situated in the West End, adjoining his Palace, and very suitable for the erection of a giant Cathedral. He shaped his plans accordingly, and the Catholics in his diocese, gradually becoming wealthy, afforded him an opportunity to indulge in the ambitious project of erecting an edifice which would rival the New York Cathedral in size and magnificence, and surpass all others in America. The Cathedral is being erected in the form of a cross, 300 feet in length from the grand entrance to the back of the nave, while its breadth, or length of the transept, is 225 feet. The length of the building will be further increased by a portico 30 feet in width. The average height of the walls will be 30 feet. Those to support the roof of the nave will have to go forty feet higher, with an additional elevation of 66 feet under the great dome. Thus the extreme height of the masonry from the floor

unction with  
ne building in  
and will seat

situated on St.  
e ruins of the  
852, known as  
of the Roman  
and extended  
most admired  
style; it is a  
ometimes called  
indows arc of

TER.

of erection a  
Continent, for

In 1852, the  
alace which for  
is Street, were  
after, a Parish  
ite in the East  
ed to new and

will be 138 feet. The roof, which is to be of galvanized iron, will not be modelled after that of St. Peter's, for though at Rome the climate admits of a flat roof, it is otherwise in Canada. The large dome will be the handsomest part of the Cathedral; it will be an exact copy on a smaller scale of the mighty dome of St. Peter's, and when completed will be 250 feet in height, 46 feet higher than the towers of the French Church in the Place d'Armes. The front entrance will be on Dorchester Street, and there will be no colonade by which to approach the edifice, as at St. Peter's, Rome; but the grounds are to be ornamented with fountains, &c.

#### NOTRE DAME DE LOURDES.

This fine and new Church, not yet completed, is situated on St. Catherine Street, in the east part of the City. It is also an ornament to the many Catholic institutions, and no visitor should fail to visit this fine edifice.

---

HAT AND FUR ESTABLISHMENT.

**TRIBAULT, LANTHIER & CO.,**

No. 271 NOTRE DAME STREET,

IMPORTERS OF

**RUSSIAN FURS**

ALSO

**French, English & American Hats**

OF ALL KINDS,

ENGLISH RUBBER GOODS,

**"Sangster's," "Martin's" Umbrellas,**

INDIAN CURIOSITIES IN GREAT VARIETIES.

Brilliantly Lighted FUR SHOW-ROOM always  
open.

FUR Orders promptly executed at Moderate Prices.

*Our Prices will be found LOW and Marked in  
Plain Figures.*

A VISIT IS RESPECTFULLY SOLICITED.

## PROTESTANT CHURCHES.

### CHRIST CHURCH CATHEDRAL

is situated on St. Catherine Street, corner of University ; is a beautiful edifice in the Mediæval gothic style. The plan is cruciform, and is indeed a model of ecclesiastical style. The tower and spire, the latter of which is well proportioned and springs gracefully from the former, are the intersection of the four arms of the cross, and measure 224 feet in height. The Church is built of Caen stone and Montreal limestone. Length of building inside, 187 feet ; width of nave, 70 feet ; transept including tower, 99 feet. The upper stage of the tower contains a peal of bells, and the clocks are placed immediately above the corbel-table. The windows are good and copied from the best Mediæval English Churches. The front entrance is beautifully designed ; in fact, the building is unequalled on this Continent.

### ST. GEORGE'S CHURCH (EPISCOPAL)

is situated on St. François de Salles and St. Janvier Streets. The material of the building is Montreal stone. The massive gothic entrance, attractive and beautiful, though

## CHURCHES.

## FEDRAL

Street, corner  
edifice in the  
plan is cruci-  
f ecclesiastical  
the latter of  
springs grace-  
intersection of  
d measure 224  
s built of Caen  
e. Length of  
th of nave, 70  
99 feet. The  
tains a peal of  
d immediately  
e windows are  
best Mediæval  
at entrance is  
he building is

## EPISCOPAL)

Salles and St.  
of the building  
massive gothic  
autiful, though

without any profusion of ornament, with the modest symbols of Church and Crown, strong in their inherent right, is an excellent vestibule to a Church which bears the same of England's Patron Saint. The window tracery and chancel decoration are very tasteful. The transepts are 45 feet in length by 24 feet deep; the chancel and choir together are 46 feet deep. The gas pendants are of singularly beautiful workmanship; there are ten, five on each side, beside the one in front of the chancel. The utmost intelligence and foresight have been expended on every detail of this fine church.

## TRINITY CHURCH (EPISCOPAL)

is a very elegant building situated on the north-west corner of Viger Square and St. Denis Street; is of the early English Gothic style of architecture, and is built entirely of Montreal stone. The building is 167 feet in length, by 76 in breadth, including the tower and chancel. Total height of tower and spire, 168 feet. The church will seat 1,250.

There are more Episcopal Churches: the St. Thomas', on St. Mary Street; St. Stephens, Dalhousie Street; St. Luke, Dorchester Street; Church of St. James the Apostle, St. Catherine Street; Church of St. John the

Evangelist, Dorchester Street; St. Mary's Church, Hechelaga.

AMERICAN PRESBYTERIAN CHURCH,

on Dorchester Street, built in 1855-6; is an exact copy of Park Church in Brooklyn, N.Y. Its length is 114 feet, and the width 86 feet. Has two towers, one being finished with a spire rising 200 feet above the street. Will seat 1,200.

ST. ANDREW'S (CHURCH OF SCOTLAND),

built in 1850, on Beaver Hall Hill. The building is of Montreal stone, with a tower and spire 180 feet high.

Interior dimensions, 90 feet by 65 feet. Will seat about 1000. Was destroyed by fire in 1869, but rebuilt according to the original plan.

The other Presbyterian Churches are Knox Church, Dorchester Street; St. Gabriel Street Church; St. Paul and Erskine Churches, the latter on Dorchester Street.

WESLEYAN METHODIST CHURCH

is situated on St. James Street. This is the largest Wesleyan Church in the city. It is an elegant building of the Florid Gothic



; St. Mary's

CHURCH,

1855-6; is an  
Brooklyn, N.Y.  
width 86 feet.  
finished with a  
street. Will

(OTLAND),

l Hill. The  
with a tower

by 65 feet.  
destroyed by fire  
to the original

es are Knox  
Gabriel Street  
Churches, the

URCH

This is the  
city. It is  
Gothic

style; its size is 111 feet by 73 feet. Will comfortably seat 2,500 persons; it contains a splendid organ. The windows (several of which are memorial windows) are filled with stained glass of most elaborate design.

#### FRENCH EVANGELICAL CHURCH

is situated on the corner of Craig and St. Elizabeth Streets, and is under the direction of the French Canadian Missionary Society. It is a handsome stone edifice of the Gothic order, and will seat about 300 persons.

#### FRENCH PROTESTANT CHURCH,

on Dorchester Street, is a plain, neat brick building in Gothic style; will seat 300.

#### ZION CHURCH (CONGREGATIONAL)

is situated on Beaver Hall Hill. Was built in 1846; is of the Doric order of architecture, and will seat about 1,400 persons. In 1868 the organ roof and tower were destroyed by fire; repairs were completed in May, 1869.

#### ST. JOHN'S CHURCH (GERMAN PROTESTANT),

on St. Dominique Street, was erected in 1858. Cost \$7,000.

---

NEW JERUSALEM CHURCH (SWEEDENBORGIAN)

is situated on Dorchester Streer, corner of Hanover.

THE SHERBROOKE STREET CHURCH (WESLEYAN.)

This building is entirely of Montreal stone. Cost about \$20,000. On the front is a tower and spire, rising to the height of 120 feet. Will seat about 500.

THE OTTAWA STREET CHURCH (WESLEYAN).

Was opened for public worship in 1846. It is 60 feet by 85 feet, and will accommodate 1000 persons.

DORCHESTER STREET CHURCH (WESLEYAN).

The style of architecture is English Gothic of the 13th century; it is 63 feet by 93 feet inside; will accommodate 800 persons; will seat about 500.

THE NEW CONNEXION METHODIST

have two churches known as Salem and Ebenezer Chapels; the first is situated on Panet Street, and the latter in Dupre Lane.

## BAPTIST CHURCH,

Beaver Hall Hill, was opened for public worship in 1862. It is the early English Gothic style, surmounted by a tower, and is built entirely of stone. The edifice is 55 feet wide and 80 feet in depth. The front and rear windows are adorned with stained glass, filled in with religious emblems and mottoes. Cost of the church about \$50,000. Will accommodate about 1,000.

## CHURCH OF THE MESSIAH (UNITARIAN)

is situated on Beaver Hall Hill. The style of architecture is the Bizantine. Accommodation is afforded for 800 persons.

## SYNAGOGUES.

There are only two, one on Chenneville Street, occupied by the English-speaking Jews, and the other on St. Constant Street, occupied by the German Jews.

## CHARITABLE INSTITUTIONS.

## THE HOTEL-DIEU.

This is the most extensive religious edifice in America; it is composed of the Church, Convent and Hospital. The grounds are

surrounded by a massive stone wall, the circumference of which is one and a half mile. The physicians of the institution are the Professors of the French School of Medicine. Previous to the conquest the Hotel-Dieu was supplied with medicines and other necessaries by the French Government; at present the funds are derived from rents of lands, charitable bequests or donations, and an annual grant from Parliament.

#### THE GREY NUNNERY,

also called Montreal General Hospital, is situated on St. Catherine Street west. Of the size of the institution, we may form an idea from the fact that at present it contains 139 nuns, known as Sisters of Charity, 37 novices, and 500 inmates, while over 5,000 visits are made annually to the sick and poor of the city, and from the dispensary over 10,000 prescriptions are given to the poor, gratis, during each year. In addition to their own establishment, and the visits of the sick, the Sisters have under their charge several other benevolent institutions, viz.:

St. Joseph Asylum, on Cemetery Street, for the reception of orphan boys and girls, which has 250 inmates;

St. Patrick's Asylum, connected with the

St. Patrick's Church, which contains about 100 inmates. It was founded in 1839, solely for Irish orphans and aged persons. In connection with this asylum is an infant-school, also taught by the Sisters, which is attended by 450 pupils ;

Nazareth Asylum, for the blind, and infant school ; is built on St. Catherine Street ; has over 425 pupils and a number of blind persons.

## PROTESTANT INSTITUTIONS.

### MONTREAL PROTESTANT ORPHAN ASYLUM,

situated on St. Catherine Street, is a stone building of neat appearance, and has pleasant grounds attached. Children are not allowed to leave the Asylum before the age of 8 or 9 years, except when adopted into respectable families. The orphans are instructed in the rudiments of a religious and useful English education ; and the girls, in addition to needle work, are early taught the domestic duties of the establishment. There are also in the city upwards of 60 Societies, such as the German, New England, Irish Protestant Benevolent, St. Patrick's, St. George's, St. Andrew's, &c., &c., which afford to their

members, or others, relief, assistance or protection.

PROTESTANT HOUSE OF INDUSTRY AND REFUGE, is situated on Dorchester Street, near Bleury. The building is of brick, three stories in height, with basement. On the first story is the ladies' industrial department, and the general offices of the institution; the second story contains the Board-room and dwelling of the superintendent; the third story being fitted up as dormitories. Religious services are conducted in the Board-room, every Sabbath afternoon, by the clergymen of the city in turn.

### THE PLEASANT DRIVES.

The drive around the mountain is certainly one of which it would be difficult, for natural beauty, to surpass. On a clear, bright day, the view from any point of the drive is magnificent; several hundred feet below is spread out a gorgeous panorama of ever-varying beauty, affording commanding and attractive views of the Canadian metropolis, and the great river of the North. Well

stocked and highly cultivated farms attest the prosperity of the husbandman; comfortable homesteads, nestling 'mid a luxuriant growth, dot the landscape; here and there broad belts of forest shade the view, and form a fringework to the picture; looming up faintly shadowed in the distance, the far off hills of Vermont rear their summit, while like a silver thread winding through the valley, the majestic St. Lawrence flows onward to the sea, spanned at this point by the Victoria Bridge, one of the greatest modern specimens of engineering skill. Handsome private dwellings, faced with gardens laid out with great taste, line the roadway and add to the beauty of the scene.

#### TO LACHINE.

The drive to Lachine (9 miles) is one of the greatest interest. Lachine is the summer residence of many Montrealers, and becomes famous by its annual regattas. It is noted as being the scene of a terrible massacre of the whites by the Iroquois Indians, in the year 1669, when over two hundred persons were burned alive. Caughnawaga, an Indian village, is situated immediately opposite, and is connected by a steam ferry.

The Lachine road leads along the bank of the St. Lawrence and commands views of scenery of unsurpassed beauty and grandeur.

### TO LONGUE POINTE.

Another favorite drive is in an opposite direction to the last, to Longue Pointe, passing through the village of Hochelaga. The river scenery in this direction is very fine, and of quite a different character from that west of the city. The villages of Longueuil, Boucherville and Varennes may be seen on the opposite side of the river.

### THE LACHINE RAPIDS.

One of the most delightful, as well as most exciting experiences of the visitor to Montreal is the descent of the Lachine Rapids. A train leaves Bonaventure Station every morning at 7 o'clock for Lachine (9 miles), where a staunch steamer is in readiness, on which passengers may embark and return to the city; shooting the Rapids, and passing under Victoria Bridge on the way. This little trip should on no account be omitted from the tourist's programme. The time consumed is but little more than



two hours, but the sensations of those two hours are such as will not be forgotten during a lifetime.

The following description of the descent of the Rapids, taken from an American newspaper, will be found interesting: "Here a boat came off from the village (the Indian village of Caughnawaga) and brings an Indian. He is a fine-looking man, apparently about 60 years of age; he came on board to pilot the boat over the Lachine, which is the last but the most dangerous of the rapids. As the boat moves onward to the rapids, all the passengers are anxious to get a good position, in order to have a good view of the heaving, breaking and laughing waters. As we near the rapids, we appear to be running upon a small grass-crowned rocky island. Indeed the bow of the boat is so near that it appears to be impossible to clear it; we look to see if the pilot is at the helm. Yes, there he stands, the captain at his post in front of the wheel-house, and the Indian pilot with three other strong men at the wheel; and as we look at the calm countenance of the Indian, and see that his bright eye does not so much as wink, but is fixed steadily upon his beacon, whatever it may be, and the wheels-men are fully under his control, we feel that, with

his skill, care and knowledge of the way, we may banish fear from our thoughts. He guides the boat among the islands and rocks, over the rapids and through the intricate channels, as easily as a skilful horseman reins a high spirited charger. As quick as thought the boat glides away from these rocks, which it appears impossible to avoid, but the pilot apparently is insensible to fear, though not to the responsibility that rests upon him. He is aware, and all are aware, that one false move and all is lost; for the current is so swift, the seas run so high, and the boat is driven so rapidly, that one touch upon a rock would shiver her to atoms. Although the passage of the rapids appears to be so dangerous, a sense of pleasure and excitement takes the place of fear."

#### THE VICTORIA BRIDGE.

The Victoria Bridge (built under the superintendence of the celebrated Robert Stephenson), the longest and largest bridge in the world, is that known as the tubular or beam bridge, and consists of a series of iron tubes resting on 24 stone piers, with a distance between each pier of 242 feet, except the centre opening, which is 330 feet in length.

Its total length between the abutments is 6,600 feet, or a mile and a quarter. The bridge is approached by massive embankments, the one on the Montreal side being 1,200 feet, and that on the south shore 800 feet in length, which together, including the abutments, makes the total length of the bridge 9,084 feet, or nearly a mile and three-quarters.

The cost of this gigantic structure was \$6,300,000. In its erection 250,000 tons of stone, and 8,000 tons of iron have been used.

The following are the dimensions of the tube through which the trains pass, viz.: in the middle span, 22 feet high, 16 feet wide; at the extreme end, 19 feet high, 16 feet wide; the height above summer water level in the centre opening is 60 feet, descending to either end at the rate of one in 130.

The foundation stone was laid on the 22nd July, 1854, and the bridge was completed in 1860. It is used only for railway transit. No train is allowed to enter the bridge without a written permit from the proper officer, thus insuring exemption of collision or accident; the passage occupies about six minutes, though seeming much longer to the passenger, as it is somewhat cheerless. The river beneath the bridge has a swift current, and

the piers are calculated to withstand immense pressure from descending masses of ice.

#### NELSON'S MONUMENT.

This ornament, erected in the memory of the hero of Trafalgar, stands in Jacques Cartier Square. The foundation was laid on the 17th of August, 1808.

A point of interest to visitors is Mr. Parks' Photographic Studio on St. James Street, within a few paces from the Hotel. Mr. Parks has gained a reputation for excellence of workmanship and for his reasonable charges, and the superiority of his pictures is clearly demonstrated by the fact that he holds several first-class prizes taken by him at the principal Exhibitions in Canada. Should the tourist desire to carry away, as souvenirs of his visit, either a portrait of himself or a collection of stereoscopic views of the city and its surroundings, he would do well to visit Mr. Parks, his studio being well known as the place where the best views of the city are to be procured. The proprietor will always be pleased to welcome those who desire to visit his art gallery and inspect the choice specimens on exhibition.

d immense  
of ice.

memory of  
n Jacques  
was laid on

Mr. Parks'  
es Street,  
otel. Mr.  
excellence  
reasonable  
pictures is  
t he holds  
him at the  
ould the  
venirs of  
or a col-  
e city and  
l to visit  
known as  
f the city  
ietor will  
nose who  
spect the

## TOURIST TICKETS

via the

# GRAND TRUNK R'Y

AND CONNECTIONS.

*THE GREAT PLEASURE ROUTE OF AMERICA*

FROM THE

**WEST** via NIAGARA FALLS

TO THE

**CENTENNIAL EXHIBITION  
AT PHILADELPHIA.**

—:0:—

*Round Trip and Excursion Tickets issued at*

MONTREAL, BOSTON, NEW YORK, BUFFALO,  
NIAGARA FALLS, DETROIT, CHICAGO,  
And all important Centres for

**PHILADELPHIA,**

*Via QUEBEC, the WHITE MOUNTAINS, LAKES  
CHAMPLAIN and GEORGE, SARATOGA,  
and the HUDSON RIVER.*

—:0:—

**Pullman Palace and Sleeping Cars on all  
Through Trains.**

—:0:—

**FIRST-CLASS ACCOMMODATION, SURPASSED BY NONE IN AMERICA.**

A great variety of Routes is afforded by this Line.

**BAGGAGE CHECKED THROUGH.**

**FARES LESS** than by any other Route.

Through Tickets, Time Tables, and reliable information may be obtained at all principal Ticket Offices in the United States and Canada

## OUR ELEGANT STORES.

### STE. MARIE BROS.

Dry Goods, on Notre Dame Street, make a specialty in importing Laces, Shawls and French Bonnets and Silks, and is called by American tourists "The American Store."

### CHEAPSIDE.

A. A. Murphy, Dry Goods, Notre Dame Street. This is one of the largest and finest stores in Montreal, and it is known for a fact to be the cheapest in Canada. Any tourist that pays a visit cannot help buying, and find what he wants.

### H. H. MERRILL,

Dry Goods, Notre Dame Street. This is the finest and largest store in Canada, and is called by the Americans the A. A. Stewart of Canada. It well repays the tourist to pay it a visit.

### MESSRS. THIBAULT, LANTHIER & Co.,

First Prize Furriers, on Notre Dame Street. We would recommend the stranger not to

fail to pay a visit to their fine Show-Rooms of Indian Curiosities, Rich Russian Furs, and a variety of ready-made Seal Skins, Ladies' Jackets, Gentlemen's Russian Lamb Overcoats, &c., &c.

### THE AMERICAN

Gentlemen's Furnishing Store, G. A. Gagnon, 300 Notre Dame Street, where the tourist will be certain to find at a moderate price a variety of beautiful Gentlemen's Silk Underclothing, Silk Umbrellas, Scarfs, Handkerchiefs, Kid Gloves, &c., &c.

### HEARN & HARRISON,

General Opticians, on Notre Dame Street. Large importers of French Opera, Marine and Field Glasses, Fancy Goods, Eye-Glasses, Barometers, Thermometers, and a variety of nick-nacks, &c., &c.

### J. G. KENNEDY,

Merchant Tailor and Clothier, 31 & 33 St. Lawrence Main Street. This is the largest and best store in Canada, where a fine cut can be got, and a genuine suit of Tweed can be got for Fifteen Dollars and upwards. No tourist should fail to visit that fine store.

ORES.

t, make a  
nawls and  
called by  
Store."

tre Dame  
and finest  
for a fact  
ny tourist  
, and find

his is the  
a, and is  
Stewart  
st to pay

R & Co.,

e Street.  
r not to

## GRAND TRUNK RAILWAY.

We give a page in this Guide describing the different Routes and accommodations for excursionists that this Company affords. The stranger will please notice, and save money, time and comfort by it.

---

## PUBLIC SQUARES AND GARDEN.

At the head of McGill street, the Victoria Square is neatly laid out, the centre being occupied by a large fountain. Being comparatively a new square, the trees are yet but small. At the south end of the square is placed the beautiful bronze statue of Queen Victoria. This work of art is from the studio of Mr. Marshall Wood, and was presented to the city by H. E. the Governor General on the 21st November, 1872. The cost of the statue was about \$3,000, together with the pedestal, the latter the gift of the Corporation.

## VIGER SQUARE OR GARDEN

is situated on Craig and St. Denis Streets. It contains three fountains, the largest one



being in the centre of the square. Close by this fountain is a neat conservatory for the propagation of flowering roots, etc., for the decoration of this and other city squares. The grounds are beautifully laid out, and the utmost care and great discrimination has been displayed in the choice of trees and shrubs, which are plentifully cultivated.

#### CHAMP DE MARS.

This spot, now the property of the Dominion Government, was formerly held by the Imperial Government, and used by them as a parade, or drill ground, for the use of the troops. It is 240 yards long by 120 wide, and is perfectly level. On the embankment, next to Notre Dame Street, a range of stairs extends along the whole length of the parade for the accommodation of citizens during the public reviews, &c.; along the upper part of the stairs is a broad terrace which serves as an agreeable promenade. It is situated immediately in rear of the Court House.

#### MOUNT ROYAL PARK.

The city has recently acquired a large property on the slope of the Mountain, for the use of the citizens as a Public Park, which

AY.

Describing  
ations for  
ards. The  
e money,

DEN.

Victoria  
re being  
compa-  
yet but  
square is  
f Queen  
e studio  
ented to  
neral on  
t of the  
with the  
Corpora-

N

Streets.  
est one

for beauty and variety, for its accessibility to the city, for size, and for the magnificence of the prospect which it commands, stands unrivalled in the world.

---

## PUBLIC BUILDINGS.

### THE COURT HOUSE.

This building, situated on Notre Dame Street, is after the Grecian style of architecture, and is, in its unpretending and massive grandeur, second to few buildings in the city. The most striking feature is its large Ionic portico and the bold projection of the pediment, which gives the central portion of the principal front a very noble appearance. There is now in course of erection a new Court House, which will be called City Hall and which, it is said, will be the finest building in Montreal, perhaps in America.

### CUSTOM HOUSE.

The new Custom House is the splendid building erected by the Royal Canadian Insurance Company, and which the Govern-

ment, in 1870, purchased for \$200,000; the splendid oak furniture and fittings, safes, &c., being transferred with the property. Alterations were made to make it suitable for its new purposes. There are three principal entrances, one, and the most imposing, being that by the stone portico facing on Custom House Square, and the other two being from Commissioners Street, and Common Street respectively. Entering by this main entrance the landing-waiter offices are on the left-hand side, and the warehouse offices on the right. Immediately adjoining the former is the surveyors' offices. Passing through the landing-waiters' room, we come to the offices of the sampler and weigher, and the tide-surveyor. The first offices on the second story are those of the collector, a large room for the clerks and which may be used as a waiting-room; adjoining it the public offices of the collector, and again adjoining this a private office, all of them neatly fitted up. The warehousing apartments are exceedingly spacious and commodious. Three elevators worked by steam power are used in taking packages to the different flats.

#### BONSECOURS MARKET

is equal, if not superior, to any building of the kind in America. It is of the Grecian

Doric style of architecture ; the cost of its erection was about \$200,000. One half of the upper portion of this building is occupied by the offices of the Corporation and the Council chamber. This building is the first to attract the attention of the tourist as he approaches the city from the river. It has an extensive frontage on the river side and is three stories in height, with a lofty dome.

#### MERCHANTS' EXCHANGE.

This building is three stories high, with basement and finished attics. The ground floor is divided into large double offices, with safes. On the second floor is the reading-room sixty feet by thirty-two feet, extending from front to rear, with offices for the secretary and two other double offices. The third and fourth are occupied as offices, a portion of the latter being used as a residence for the keeper. The building is heated with steam. The facades are cut stone, the principal one, facing on St. Sacramento Street, being in the Italian style, with main entrance in the centre.

#### CORN EXCHANGE.

This building forms the corner of St. Sacramento, St. John and St. Alexis Streets.

It is three stories in height, the upper one being equal in height to the two lower ones. The lower story and a portion of the second is of dressed Montreal stone. The upper portion is of red brick, with stone dressing. The upper flat is fitted up as an elegant and spacious Hall for the transaction of business ; and is frescoed in a simple yet effective style. The room is well lighted with lofty windows on three sides. Adjoining this room is the Secretary's office and Board-room.

#### MECHANICS' INSTITUTE,

corner St. James and St. Peter Streets, is in the Italian style of architecture, and consists of three divisions ; the centre having a portico with columns and rusticated pillovs on lower story. The pillars and quoins are ornamented. In the second story is the reading-room, which is supplied with all the leading newspapers and periodicals.

#### INSTITUT CANADIEN.

This institution occupies and owns a building of cut stone, four stories in height, situated on Notre Dame Street. It was founded 1844, previous to which the French had not a single library in the city, nor a

place where they could read, or meet together. It was incorporated in 1852.

There are several other public libraries in Montreal, as follows: Advocate's Library and Library of the Bar, founded 1827; Canadian Mechanics' Institute, founded 1857; Grand Trunk Reading Room and Library; Institut Canadien Français; Œuvre des Bons Livres, founded in 1844.

#### NATURAL HISTORY SOCIETY'S MUSEUM

is situated on University street, and is built of white brick. On the ground floor is the lecture-room, library, committee-room, and residence of the keeper. The second story, which is about 36 feet in height, contains the museum, which is surrounded by a gallery, and lighted by skylights. Around the sides of the principal hall are cases containing birds, reptiles and quadrupeds. The centre is occupied by cases of mineralogical and geological specimens. In the galleries are specimens of shell-fish, corals and shells, of which a large collection of fine specimens are exhibited. The walls are hung with paintings, Indian dresses and curiosities, specimens of paper money, cases of coins, medals, &c. The principal attraction in the galleries is the

# Richelieu and Ontario Navigation Co.

## ROYAL MAIL LINE

Between Quebec, Montreal, Kingston, Toronto, Hamilton and intermediate ports, connecting with the various Railways, for

DETROIT,  
CHICAGO,  
ST. LOUIS,  
NEW ORLEANS,



MILWAUKEE,  
ST. PAUL,  
FORT GARRY,  
GREEN BAY,

OMAHA, SACRAMENTO, AND SAN FRANCISCO.

This Company's lines are composed of the following first-class Iron and composite side-wheel Steamers, viz. :

*QUEBEC*, Capt. LABELLE.  
*MONTREAL*, Capt. NELSON.  
*CORSICAN*, Capt. SINCLAIR.  
*SPARTAN*, Capt. DUNLOP.  
*CORINTHIAN*, Capt. FARRELL.  
*ALGERIAN*, Capt. TROWELL.  
*PASSPORT*, Capt. SHERWOOD.  
*MAGNET*, Capt. BAILEY.  
*BOHEMIAN*, Capt. MCCOY.

### Return Tickets at reduced rates.

The steamers of this Line are replete with every comfort and convenience, and every appliance for safety; and from the completeness of the arrangements, present advantages to travellers superior to any other conveyance.

**J. B. LAMERE,**

General Manager.

**ALEX. MILLOY,**

Traffic Manager.

**GEO. W. ROBINSON,**

Ticket Agent, 139 St. James Street.

Ferrier collection of Egyptian and other antiquities, collected by Hon. James Ferrier during a tour in the East, and presented to the Society by him.

#### GEOLOGICAL SURVEY'S MUSEUM,

situated opposite the west end of Champ de Mars, is a plain stone edifice, three stories in height. It is open from 10 a.m. to 4 p.m., and is free to all.

#### THE NEW POST OFFICE,

on the corner of St. James and St. François Xavier Streets, has a frontage on St. James Street of 120 feet, and its depth from St. François Xavier Street to the Montreal Bank building will be 95 feet. The height of the main building from ground level to the roof will be 88 feet, and from the basement to summit of central tower will be 120 feet. The building is constructed of Montreal grey stone. The style of architecture is the modern Italian. The facade on St. James Street is highly ornamented with cut stone pillars, pediments and carved portico, while the mansard roof is decorated with richly finished mouldings. The central tower is to contain a large illuminated clock with immense dial



plate. The mansard roof will be of wood and protected with iron and slates. The basement and first floor will be constructed of fire-proof materials, and the entire frame of the building is to be of iron, while the floors will be laid with Baccérini cement, and well traversed with iron for preservation of the valuable contents of the building. It will cost about \$500,000.

#### VICTORIA SKATING RINK.

Skating is one of the most popular of the amusements pursued by the citizens of Montreal during the winter season. While the river St. Lawrence furnishes room for all who may desire to practice the art, still the violent storms often prevent its being practiced in exposed places.

To provide against this, several private rinks have been erected, the principal one being that known as the Victoria Rink.

The building is 250 feet long by 100 broad, is built of brick and covered by a semi-circular arch-like roof fifty feet high in the centre. The space used for skating is surrounded by a promenade, raised about a foot above the level of the ice. The front portion of the building is two stories in

height, and contains on the lower floor commodious dressing and cloak-rooms and offices.

#### YOUNG MEN'S CHRISTIAN ASSOCIATION BUILDING.

This building, situated on the corner of Craig and Radegonde Streets, is one of the finest in the City; it contains a reading-room which is free to all, and is a most elegant and cheerful apartment.

#### DOMINION TELEGRAPH COMPANY

is situated on St. François Xavier Street. This Company has connections with all places in United States and Canada, and will soon connect with European lines. C. R. HOSMER, Superintendent; S. E. GARVEY, General Manager.

### BANK BUILDINGS.

#### MERCHANTS' BANK OF CANADA.

This magnificent edifice, said to be the finest building for commercial purposes in America, is situated on the corner of St. James and St. Peter Streets.

## BANK OF MONTREAL, PLACE D'ARMES.

This magnificent building is situated on St. James Street, next to the new Post Office, and its Corinthian style of architecture is perfectly gorgeous. The entrance is by a portico supported by immense columns of cut-stone. These are surmounted by a pediment. The sculpture on the pediment is 52 feet long and weighs over twenty-five tons, there being twenty different pieces. The figures are colossal, eight feet in height for a human figure, and are placed at an elevation of fifty feet from the ground. The arms of the Bank, with the motto "*Concordia Salus*," form the centre of the group; on each side, *vis-à-vis*, is seated a North American Indian. The other two figures are a settler and a sailor on either side, the former, with a calumet or pipe of peace in his hand, reclining upon logs, and surrounded by the implements and emblems of industry, the spade, the plough, the locomotive engine; literature and music putting in a modest appearance in the distance, in the shape of a book and a lyre. The whole sculpture is in Binny stone. The work was executed by Mr. John Steele, R. S. A., Her Majesty's sculptor in Scotland.

**MOLSON'S BANK,**

situated on the corner of St. James and St. Peter Streets, is a magnificent building, built entirely of Ohio sandstone. It is three stories in height with a lofty basement. The style of architecture is Italian, and is highly ornamented.

**BANK OF BRITISH NORTH AMERICA,**

situated on St. James Street, near St. François Xavier, is built entirely of cut-stone, and is of the composite style of architecture. The head office of this Bank is in London, England. It was established in 1836, and was incorporated by Royal charter in 1840.

**ONTARIO BANK**

is situated on Place d'Armes. Is in the Italian style of architecture, four stories in height and built of Montreal limestone.

**MECHANICS' BANK**

is a plain three-story brick building, covered with cement and painted to imitate brown free stone. The banking offices are on the ground floor.

### BANQUE JAQUES CARTIER.

The new building occupied by this Bank is situated on the east side of Place d'Armes, and is a well executed building in the modern French Renaissance style, four stories in height, with high mansard roof.

### CITY BANK,

on Place d'Armes, is a plain, substantial stone building of the Doric order of architecture.

### BANQUE DU PEUPLE

is situated on St. James Street. It is a large building of cut stone, and is three stories in height. Above the windows of the lower story are four compartments, in which are placed emblems representing agriculture, manufactures, arts and commerce, executed in bas-relief.

In addition to those described, the following Banks have their head-offices in this city :

City and District Savings Bank, corner of St. James and St. John Streets ;

Metropolitan Bank, St. James Street ;  
Exchange Bank of Canada, 60 St. Francois  
Xavier Street ; and La Banque Ville-Marie,  
8 St. Lambert Hill.

---

---

**J. EVELEIGH & CO.,**

*Successors to E. PERRY & Co.,*

**Manufacturers of Trunks, Valises and Bags,**

**371 NOTRE DAME STREET,**

***MONTREAL.***

—:O:—

Oak-tanned Solid Leather Trunks and English Port-  
manteaux constantly on hand.

P. S.—Repairs promptly attended to.

# "THE MEDICAL HALL"

(East Corner of St. Lawrence Hall Building.)

—:O:—

## Kenneth Campbell & Co.,

IMPORTERS OF

### Genuine Drugs, Chemicals, Perfumery,

### AND TOILET REQUISITES.

Lubin's and Atkinson's Perfumery.

"Farina" and "The Nuns" Cologne.

"Orgia" Perfumes and Soaps.

English Brushes of every kind.

Coudray's Perfumery.

Travellers' Requisites.

—:O:—

### GENUINE DRUGS & PATENT MEDICINES.

Special attention given to the dispensing department.

N. B.—Access to the MEDICAL HALL may be had by the Ladies' Entrance Corridor.



## **ST. LOUIS HOTEL,**

*ST. LOUIS STREET, QUEBEC.*

This Hotel, which is unrivalled for size, style and locality in Quebec, is open throughout the year for pleasure and business travellers. It is eligibly situated in the immediate vicinity of the most delightful and fashionable promenades,—the Governor's Garden, the Citadel, the Esplanade, the Places d'Armes, and Durham Terrace—which furnish the splendid views and magnificent scenery for which Quebec is so justly celebrated, and which are unsurpassed in any part of the world.

The proprietors, in returning thanks for the very liberal patronage they have hitherto enjoyed, inform the public that this Hotel has been thoroughly renovated and embellished, and can now accommodate about 500 visitors; and assure them that nothing will be wanting on their part that will conduce to the comfort and enjoyment of their guests.

**WILLIS RUSSELL & SON,**  
Proprietors.



MARCHAND & LABBE,  
**Bankers & Brokers**

**No. 128,**

**Corner St. James**

AND

**ST. FRANCOIS XAVIER STREETS,**

**MONTREAL.**

---

Collections made in all parts of the Dominion and the  
United States.

**GREENBACKS, GOLD, SILVER**

AND

**UNITED STATES BONDS,**

And all Uncurrent Money BOUGHT and SOLD on most  
liberal terms.





A large rectangular frame with a double-line border, intended for handwritten notes or a memorandum. The interior of the frame is currently blank.



---



