

**CIHM  
Microfiche  
Series  
(Monographs)**

**ICMH  
Collection de  
microfiches  
(monographies)**



**Canadian Institute for Historical Microreproductions / Institut canadien de microreproductions historiques**

**© 1997**



The copy filmed here has been reproduced thanks to the generosity of:

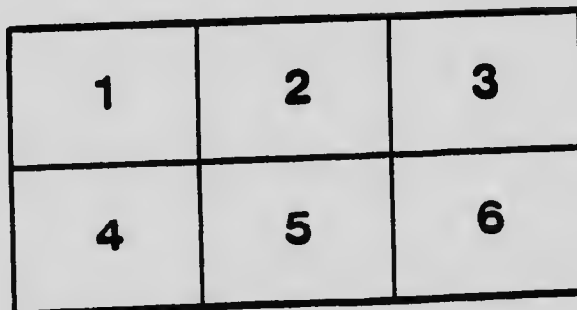
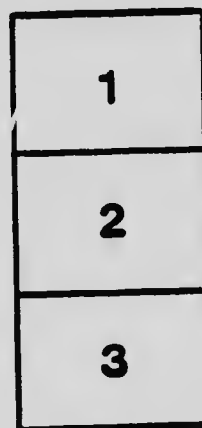
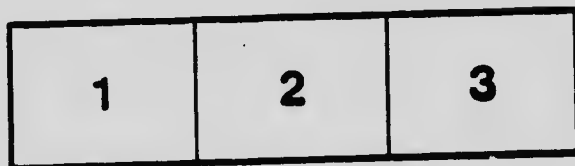
National Library of Canada

The images appearing here are the best quality possible considering the condition and legibility of the original copy and in keeping with the filming contract specifications.

Original copies in printed paper covers are filmed beginning with the front cover and ending on the last page with a printed or illustrated impression, or the back cover when appropriate. All other original copies are filmed beginning on the first page with a printed or illustrated impression, and ending on the last page with a printed or illustrated impression.

The last recorded frame on each microfiche shall contain the symbol  $\rightarrow$  (meaning "CONTINUED"), or the symbol  $\nabla$  (meaning "END"), whichever applies.

Maps, plates, charts, etc., may be filmed at different reduction ratios. Those too large to be entirely included in one exposure are filmed beginning in the upper left hand corner, left to right and top to bottom, as many frames as required. The following diagrams illustrate the method:



L'exemplaire filmé fut reproduit grâce à la générosité de:

Bibliothèque nationale du Canada

Les images suivantes ont été reproduites avec le plus grand soin, compte tenu de la condition et de la netteté de l'exemplaire filmé, et en conformité avec les conditions du contrat de filmage.

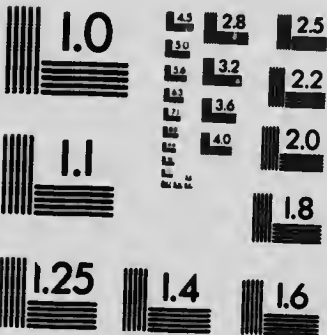
Les exemplaires originaux dont la couverture en papier est imprimée sont filmés en commençant par le premier plat et en terminant soit par la dernière page qui comporte une empreinte d'impression ou d'illustration, soit par le second plat, selon le cas. Tous les autres exemplaires originaux sont filmés en commençant par la première page qui comporte une empreinte d'impression ou d'illustration et en terminant par la dernière page qui comporte une telle empreinte.

Un des symboles suivants apparaîtra sur la dernière image de chaque microfiche, selon le cas: le symbole  $\rightarrow$  signifie "A SUIVRE", le symbole  $\nabla$  signifie "FIN".

Les cartes, planches, tableaux, etc., peuvent être filmés à des taux de réduction différents. Lorsque le document est trop grand pour être reproduit en un seul cliché, il est filmé à partir de l'angle supérieur gauche, de gauche à droite, et de haut en bas, en prenant le nombre d'images nécessaire. Les diagrammes suivants illustrent la méthode.

# MICROCOPY RESOLUTION TEST CHART

(ANSI and ISO TEST CHART No. 2)



1432-501

CANADA  
DEPARTMENT OF MINES  
HON. MARTIN BURRELL, MINISTER; R. G. MCCONNELL, DEPUTY MINISTER  
MINES BRANCH  
EUGENE HAANEL, PH.D., DIRECTOR

---

THE  
PRODUCTION OF COAL AND COKE  
IN  
CANADA

During the Calendar Year

1917

John McLeish, B.A.

*Chief of the Division of Mineral Resources and Statistics.*



OTTAWA  
J. DE LABROQUERIE TACHÉ  
PRINTER TO THE KING'S MOST EXCELLENT MAJESTY  
1919

No. 501.



**CANADA**  
**DEPARTMENT OF MINES**  
HON. MARTIN BURRELL, MINISTER; R. G. McCONNELL, DEPUTY MINISTER  
**MINES BRANCH**  
EUGENE HAANEL, PH.D., DIRECTOR

---

**THE**  
**PRODUCTION OF COAL AND COKE**  
**IN**  
**CANADA**

**During the Calendar Year**

**1917**

**J. DE LABROQUERIE TACHÉ, B.A.**

*Chief of the Division of Mineral Resources and Statistics.*



OTTAWA  
J. DE LABROQUERIE TACHÉ  
PRINTER TO THE KING'S MOST EXCELLENT MAJESTY  
1919

No. 501.

## CONTENTS.

### COAL.

	PAGE
General Statement:—	
Production by provinces, 1916 and 1917.. . . . .	6
Distribution of coal mined, 1916 and 1917.. . . . .	7
Monthly production of Coal by provinces 1917 and part of 1918.. . . . .	8
Annual production in Canada.. . . . .	9
Exports of coal.. . . . .	9
Imports of coal.. . . . .	10
Consumption of coal in Canada.. . . . .	13
Nova Scotia:—	
Production by companies, 1916 and 1917.. . . . .	16
Annual production in Nova Scotia.. . . . .	18
Coal trade by counties.. . . . .	19
Statistics of distribution of coal and labour statistics covering year ending September 30, 1917, from the Provincial reports.. . . . .	20
New Brunswick:—	
Production by collieries, 1916 and 1917.. . . . .	22
Annual production.. . . . .	23
Saskatchewan:—	
Production by collieries, 1916 and 1917.. . . . .	24
Annual production.. . . . .	25
Alberta:—	
Monthly production of Coal in Alberta, 1917 and part of 1918.. . . . .	26
Production and output of coal in Alberta, 1917, by districts.. . . . .	27
Production by collieries, 1916 and 1917.. . . . .	28
Annual production in Alberta.. . . . .	30
British Columbia:—	
Production by districts and by collieries, 1916 and 1917.. . . . .	30
Annual production in British Columbia.. . . . .	34
Yukon:—	
Annual production.. . . . .	35

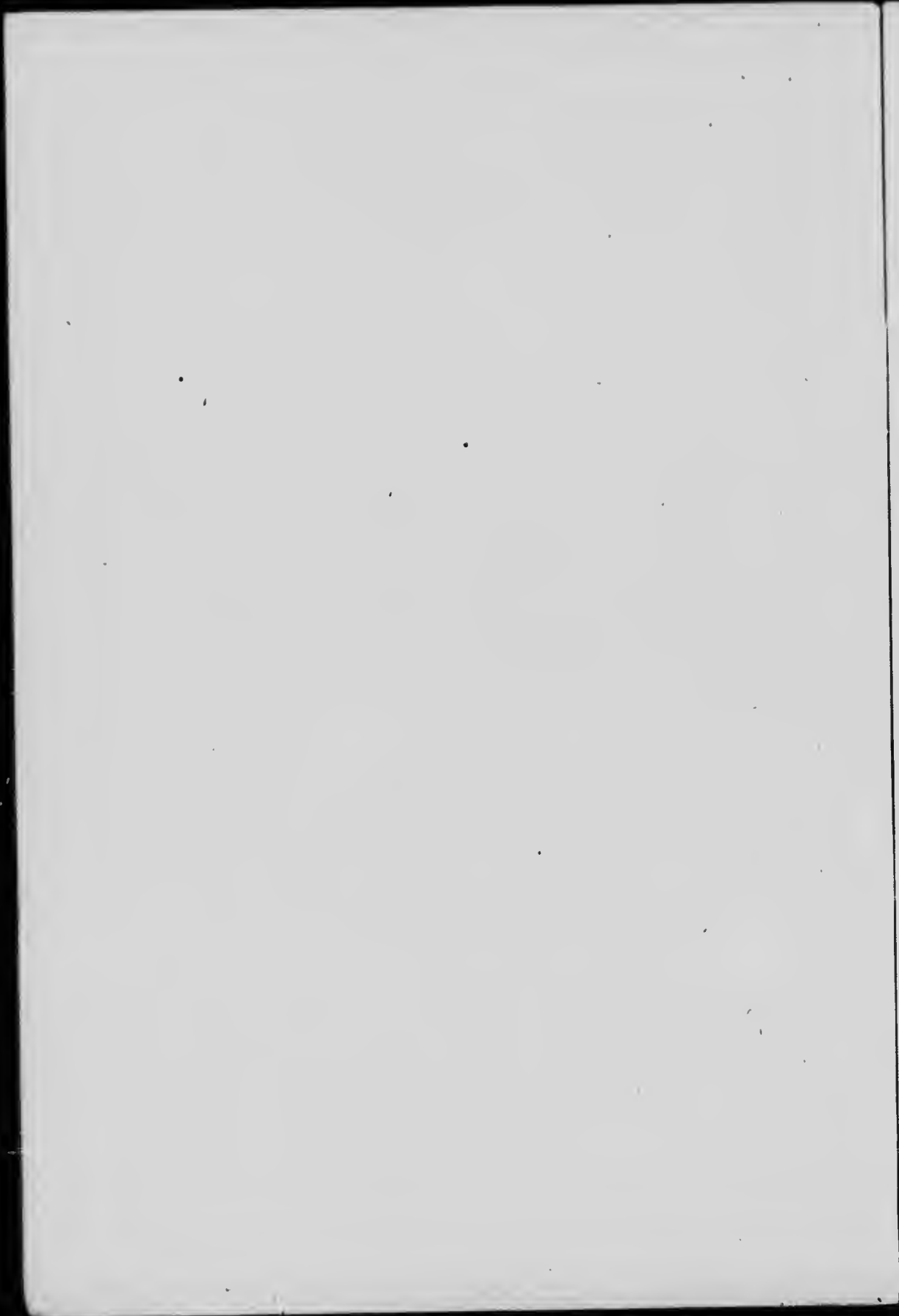
### COKE.

Production by provinces, 1916 and 1917.. . . . .	36
Distribution of coke production.. . . . .	36
Annual production by provinces.. . . . .	37
Exports and imports.. . . . .	38
Coke oven by-products.. . . . .	39



**ADVANCE CHAPTER OF THE ANNUAL REPORT ON THE MINERAL PRO-  
DUCTION OF CANADA DURING THE CALENDAR YEAR 1917.**

*(Tons used throughout this report are short tons of 2,000 pounds, except where other-  
wise stated.)*



## COAL.

The term "production" in the text and tables of this report is used to represent the tonnage of coal actually sold, or used, by the producer, as distinguished from the term "output," which is applied to the total coal extracted from the mine, and which includes, in some cases, coal lost or unsaleable, or coal carried into stock on hand at the end of the year.

The production of coal during 1917 was 14,046,759 short tons (12,541,749 long tons), valued at \$43,199,831, or an average of \$3.08 per ton, as compared with a production in 1916 of 14,483,305 short tons (12,981,603 long tons), valued at \$38,817,841, or an average of \$2.68 per ton, a falling off in production in 1917 of 436,636 tons, or a little over 3 per cent.

The average number of men employed during 1917 was 24,596, and total wages paid \$25,963,520, as compared with an average of 23,611 men employed in 1916 and \$20,884,236 paid in wages.

The values of the production in 1917 have, for all provinces been furnished directly by the operators. In 1916 and previous years, however, complete returns of values were not received from all operators, and the values placed upon the coal production in the provinces of Nova Scotia and British Columbia were partially estimated, or assumed.

The peculiar situation which exists in respect to Canada's fuel supply, viz.: That notwithstanding the enormous resources which Canada possesses in coal, over 50 per cent of our consumption is imported from the United States, has been pointed out and explained annually in these reports. The Canadian coal-fields are situated in the extreme east and in the western provinces, while the great central Provinces of Ontario and Quebec, the chief centres of population, are more easily and economically supplied with coal from the nearer coal-fields of Pennsylvania and Ohio. Further, there is no anthracite coal in eastern Canada and we have grown dependent upon the anthracite output of Pennsylvania for that most desirable of the domestic fuels, which is not only the chief domestic, or house fuel in Manitoba, Ontario, and Quebec, but is imported even into our eastern coal districts.

Such a condition of international trade attracts little attention during normal times, and it is only under conditions such as those that have been brought about by the great war that the importance of the situation and its possibilities are realized. In round numbers Canada produced during 1917 about 14 million tons of coal, of which 1.7 million tons were exported, and imported 15.5 million tons of bituminous coal and 3.3 million tons of anthracite. During the previous year, 1916, we produced in round numbers 14.5 million tons, exported 1.7 million tons, and imported 18 million tons of bituminous coal, and 4.5 million tons of anthracite, thus, while production fell off, the imports were considerably increased.

The total consumption of coal in 1917 was 33,129,735 tons, as compared with 29,865,856 tons in 1916, and 23,906,692 tons in 1915.

## Production of Coal by Provinces, 1917.

Province.	Average No. of men employed.	Wages paid.	Production of Coal.			Per cent of total quantity.
			Short tons.	Value.	Average per ton.	
		\$		\$	\$	
Nova Scotia.....	10,283	10,406,170	6,327,001	19,410,737	3 068	45·04
New Brunswick.....	390	375,379	189,095	708,010	3 744	1·35
Saskatchewan.....	434	318,980	355,445	662,451	1 86	2·58
Alberta.....	8,350	8,906,315	1,736,368	14,153,685	2 99	33·72
British Columbia.....	5,126	5,945,176	2,433,888	235,716	3 383	17·33
Yukon Territory.....	13	11,500	4,872	29,232	6 00	0·03
Total.....	24,596	25,963,520	14,046,759	43,199,831	3 08	100·00

## Production of Coal by Provinces, 1916.

Province.	Average No. of men employed.	Wages paid.	Production of Coal.			Per cent of total quantity.
			Short tons.	Value.	Average per ton.	
		\$		\$	\$	
Nova Scotia.....	10,851	8,161,297	6,912,140	18,514,662	2 68	47·73
New Brunswick.....	327	212,332	143,540	386,016	2 69	0·99
Saskatchewan.....	409	234,986	281,300	441,836	1 57	1·94
Alberta.....	7,060	6,813,209	4,559,054	11,386,577	2 50	31·48
British Columbia.....	4,949	5,454,912	2,584,061	8,075,190	3 12½	17·84
Yukon Territory.....	15	7,500	3,300	13,200	4 00	0·02
Total.....	23,611	20,884,236	14,483,395	38,817,481	2 68	100·00

## Comparison of Production, 1915 with 1916, and 1916 with 1917.

Province.	(i) Increase or (d) Decrease.			
	Years 1915 and 1916.		Years 1916 and 1917.	
	Short tons.	p. c.	Short tons.	p. c.
Nova Scotia.....	(d) 551,230	7·39	(d) 585,049	8·46
New Brunswick.....	(i) 16,149	12 68	(i) 45,555	31 74
Saskatchewan.....	(i) 41,193	17 16	(i) 74,145	26 39
Alberta.....	(i) 1,198,236	35 65	(i) 177,314	3 89
British Columbia.....	(i) 518,448	25 10	(d) 150,173	5 81
Yukon Territory.....	(d) 6,424	66 06	(i) 1,572	47 64
Total for Canada.....	(i) 1,216,372	9 17	(d) 436,636	3 01

It will be noted that the Provinces of Nova Scotia and British Columbia each showed a smaller production than the previous year, whereas in New Brunswick, Saskatchewan and Alberta, an increase is shown, the net result being a total falling off amounting to 436,636 tons.

The total production in 1917 includes 108,225 tons of anthracite, or less than 1 per cent of the total; 11,154,251 tons of bituminous, or 79 per cent of the total, and 2,784,283 tons of lignite, or nearly 20 per cent of the total.

The consumption of coal during the year includes approximately 5,428,423 tons of anthracite; 24,911,029 tons of bituminous, and 2,784,283 tons of lignite.

The total output, production and distribution of coal mined by provinces during 1916 and 1917 is shown in the following tables:—

**Production and Distribution of Coal Mined, by Provinces, 1917.**  
(IN SHORT TONS.)

	Nova Scotia.	New Brunswick.	Saskatchewan.	Alberta.	Yukon.	British Columbia.	Total.
Sold in Canada .....	4,681,709	171,309	334,625	4,231,325	4,480	1,046,020	10,469,468
Sold for export to U.S. ....	353,142	13,372	.....	90,239	.....	845,128	1,301,881
Sold for export to other countries .....	258,264	.....	.....	.....	.....	42,796	301,060
<b>Total sales .....</b>	<b>5,293,115</b>	<b>184,681</b>	<b>334,625</b>	<b>4,321,564</b>	<b>4,480</b>	<b>1,933,941</b>	<b>12,072,409</b>
Used by producers in making coke, steel, brick, etc. ....	306,374	.....	3,000	102,609	.....	278,590	690,573
Used by producers for colliery consumption and by workmen .....	727,602	4,411	17,820	312,195	392	221,354	1,283,777
<b>Total used .....</b>	<b>1,033,976</b>	<b>4,411</b>	<b>20,820</b>	<b>414,804</b>	<b>392</b>	<b>499,944</b>	<b>1,974,350</b>
<b>Production* .....</b>	<b>6,327,091</b>	<b>189,095</b>	<b>355,445</b>	<b>4,736,368</b>	<b>4,872</b>	<b>2,433,888</b>	<b>14,046,759</b>
Stock on hand Jan. 1. ....	47,904	501	.....	15,776	.....	20,160	84,341
" " Dec. 31. ....	49,777	1,014	.....	10,417	.....	15,373	76,581
<b>Difference .....</b>	<b>+ 1,873</b>	<b>+ 513</b>	<b>.....</b>	<b>- 5,359</b>	<b>.....</b>	<b>- 4,787</b>	<b>- 7,760</b>
Losses due to breakage or other causes .....	16,371	60	5,178	142,628	392	231,733	396,362
<b>Total output .....</b>	<b>6,345,335</b>	<b>189,668</b>	<b>360,623</b>	<b>4,873,637</b>	<b>5,264</b>	<b>2,660,831</b>	<b>14,435,361</b>

\* Production is obtained by adding coal sold and coal used.

**Production and Distribution of Coal Mined, by Provinces, 1916.**  
(IN SHORT TONS.)

	Nova Scotia.	New Brunswick.	Saskatchewan.	Alberta.	Yukon.	British Columbia.	Total.
Sold in Canada .....	5,226,902	135,683	263,781	4,113,403	3,000	958,761	10,701,530
Sold for export to U.S. ....	416,038	4,723	1,725	60,164	.....	938,425	1,451,075
Sold for export to other countries .....	277,607	.....	.....	.....	.....	6,906	284,513
<b>Total sales .....</b>	<b>5,950,547</b>	<b>140,406</b>	<b>265,506</b>	<b>4,173,567</b>	<b>3,000</b>	<b>1,904,092</b>	<b>12,437,118</b>
Used by producers in making coke, steel, brick, etc. ....	285,892	.....	1,750	67,106	.....	450,066	804,814
Used by producers for colliery consumption and by workmen .....	675,701	3,134	14,044	318,381	300	229,903	1,241,463
<b>Total used .....</b>	<b>961,593</b>	<b>3,134</b>	<b>15,794</b>	<b>385,487</b>	<b>300</b>	<b>679,969</b>	<b>2,046,277</b>
<b>Production* .....</b>	<b>6,912,140</b>	<b>143,540</b>	<b>281,300</b>	<b>4,559,954</b>	<b>3,300</b>	<b>2,584,061</b>	<b>14,483,395</b>
Stock on hand Jan. 1. ....	85,750	526	20	9,412	.....	36,521	132,229
Stock on hand Dec 31. ....	48,477	584	49	13,632	.....	15,960	78,702
<b>Difference .....</b>	<b>- 37,273</b>	<b>+ 58</b>	<b>+ 29</b>	<b>+ 4,220</b>	<b>.....</b>	<b>- 20,561</b>	<b>- 53,527</b>
Losses due to breakage or other causes .....	37,128	60	12,935	113,759	.....	221,058	385,835
<b>Total output .....</b>	<b>6,911,995</b>	<b>143,658</b>	<b>294,264</b>	<b>4,677,033</b>	<b>3,300</b>	<b>2,785,459</b>	<b>14,815,703</b>

\* Production is obtained by adding coal sold and coal used.

**Distribution of Coal Mined during the Years 1912-13-14-15.**  
(IN SHORT TONS.)

	1912.	1913.	1914.	1915.
Sold in Canada .....	10,572,365	11,381,960	10,359,390	9,826,712
Sold for export to United States .....	1,537,585	1,255,401	1,181,536	1,330,718
"    other countries .....	314,410	263,189	239,927	297,343
<b>Total sales .....</b>	<b>12,424,360</b>	<b>12,900,550</b>	<b>11,780,853</b>	<b>11,454,773</b>
Used by producers for the manufacture of coke .....	870,885	912,421	591,331	701,975
"    by colliery consumption, and workmen .....	1,217,584	1,197,207	1,265,345	1,110,275
<b>Production .....</b>	<b>14,512,329</b>	<b>15,012,178</b>	<b>13,637,529</b>	<b>13,267,023</b>
Stock on hand Jan. 1. ....	314,742	385,456	325,275	270,499
"    Dec. 31. ....	282,069	500,477	242,152	171,205
Difference .....	- 32,673	+ 115,021	- 83,123	- 99,294
Loss due to washing, breakage, or other causes. ....	167,291	406,679	434,337	312,467
<b>Total output .....</b>	<b>14,647,447</b>	<b>15,532,878</b>	<b>13,988,743</b>	<b>13,480,196</b>

A record of the monthly production of coal by provinces is given in the following tables which shows the decreased production in Alberta and British Columbia during the months of April, May, and June due to the strikes that took place in what is known as District No. 18, during those months.

The production in Nova Scotia, New Brunswick, British Columbia, and the Yukon is all bituminous coal, that of Saskatchewan all lignite, while the production in Alberta includes the three classes, semi-anthracite, bituminous and lignite. A record of the monthly production of these three classes of coal in Alberta will be found in the section of this report dealing with that Province.

A record of the monthly production of coal during a part of the year 1918 is also given hereunder.

**Monthly Production of Coal in Canada by Provinces, 1917.**  
(IN SHORT TONS.)

Month.	Nova Scotia.	New Brunswick.	Saskatchewan.	Alberta.	British Columbia.	Total.
January .....	533,111	17,144	37,693	492,958	188,552	1,269,458
February .....	468,589	16,634	27,890	448,664	209,894	1,171,671
March .....	485,864	17,351	22,932	453,175	242,452	1,221,774
April .....	490,764	14,963	13,471	210,284	161,307	890,789
May .....	505,008	13,700	18,051	100,199	159,706	796,664
June .....	585,454	13,881	21,688	103,243	154,280	878,546
July .....	575,667	14,832	20,380	357,314	192,976	1,161,169
August .....	600,974	14,514	27,255	490,760	214,431	1,347,934
September .....	585,660	15,120	27,642	457,892	211,518	1,257,576*
October .....	578,572	16,697	40,063	543,193	232,271	1,410,796
November .....	538,019	16,629	51,622	592,063	240,156	1,438,509
December .....	429,409	17,630	46,758	486,603	226,345	1,206,745
<b>Total .....</b>	<b>6,327,091</b>	<b>189,095</b>	<b>355,445</b>	<b>4,736,368</b>	<b>2,433,888</b>	<b>14,046,759</b>

\*Includes 4,872 tons produced in the Yukon district.

## Production of Coal in Canada by Provinces, 1918.

(IN SHORT TONS.)

Month.	Nova Scotia.	New Brunswick.	Saskatchewan.	Alberta.	British Columbia.	Canada.
January.....	509,273	23,846	38,049	615,942	242,767	1,429,877
February.....	438,735	21,997	40,905	467,562	216,657	1,185,856
March.....	444,571	25,231	17,130	424,288	227,472	1,138,692
April.....	465,889	22,450	15,831	384,909	223,360	1,112,439
May.....	476,303	23,467	21,713	417,795	227,361	1,166,639
June.....	487,148	23,626	23,366	500,601	230,150	1,264,891
July.....	491,969	18,729	29,119	549,029	227,466	1,316,312
August.....	518,792	28,455	24,159	556,348	231,268	1,359,922
September.....	497,150	24,128	25,468	534,242	147,689	1,228,677
October.....						
November.....						
December.....						

Statistics of the annual production of coal from 1881 to date are given in the following table:—

The total production of coal in Canada from 1785 to 1917, has been 268,499,334 tons; of this amount Nova Scotia is credited with 166,000,110 tons, or 61.8 per cent of the total; British Columbia 57,896,219 tons, or 21.6 per cent; Alberta 40,135,141 tons, or 15 per cent; Saskatchewan 3,179,571 tons, or 1.2 per cent; New Brunswick 1,156,128 tons, or 0.4 per cent, and the Yukon Territory 132,165 tons, or 0.05 per cent.

### Annual Production of Coal.

Year.	Short tons.	Value.	Average per ton.	Year.	Short tons.	Value.	Average per ton.
1785-1880.....	16,426,253	\$ 28,190,518	\$ 1 72	1900.....	5,777,319	\$ 13,742,178	\$ 2 38
1881.....	1,537,106	2,688,621	1 75	1901.....	6,486,325	12,699,243	1 96
1882.....	1,848,148	3,248,446	1 76	1902.....	7,466,681	15,210,877	2 04
1883.....	1,818,684	3,109,635	1 71	1903.....	7,960,364	15,942,833	2 00
1884.....	1,984,959	3,593,831	1 81	1904.....	8,254,595	16,592,231	2 01
1885.....	1,920,977	3,417,807	1 78	1905.....	8,667,948	17,520,263	2 02
1886.....	2,116,653	3,739,840	1 77	1906.....	9,762,601	19,732,019	2 02
1887.....	2,429,330	4,398,206	1 81	1907.....	10,511,426	24,381,842	2 32
1888.....	2,602,552	4,674,140	1 80	1908.....	10,886,311	25,194,573	2 31
1889.....	2,658,303	4,894,287	1 84	1909.....	10,501,475	24,781,236	2 36
1890.....	3,084,682	5,676,247	1 84	1910.....	12,909,152	30,909,779	2 39
1891.....	3,577,749	7,019,425	1 96	1911.....	11,323,388	26,467,646	2 34
1892.....	3,287,745	6,363,757	1 94	1912.....	14,512,829	36,019,044	2 48
1893.....	3,783,499	7,359,080	1 95	1913.....	15,012,178	37,334,940	2 49
1894.....	3,847,070	7,429,468	1 93	1914.....	13,637,529	33,471,801	2 45
1895.....	3,478,344	6,739,153	1 94	1915.....	13,267,023	32,111,182	2 42
1896.....	3,745,716	7,226,462	1 93	1916.....	14,483,395	38,817,481	2 68
1897.....	3,786,107	7,303,597	1 93	1917.....	14,046,759	43,199,331	3 08
1898.....	4,173,108	8,224,288	1 97	Grand total..	268,499,334	599,699,304	2 23
1899.....	4,925,051	10,283,497	2 09				

### Exports of Canadian Coal.

Statistics of the exports of coal according to the records of the Department of Customs are given in the following tables. The exports of Canadian coal in 1917 were 1,733,156 tons valued at \$7,387,192, or an average of \$4.26 per ton, as compared with exports in 1916 of 2,135,359 tons, valued at \$7,099,387, or an average of \$3.32 per ton. Besides Canadian coal exported there is also a small export of coal not the produce of Canada.

**Annual Export of Coal.**  
(IN SHORT TONS.)

Calendar year.	Produce of Canada.	Not the produce of Canada.	Calendar year.	Produce of Canada.	Not the produce of Canada.
1908 .....	1,729,833	102,071	1913 .....	1,562,020	66,566
1909 .....	1,588,099	161,098	1914 .....	1,423,126	83,137
1910 .....	2,377,049	159,859	1915 .....	1,766,543	59,690
1911 .....	1,500,639	133,943	1916 .....	2,135,369	62,783
1912 .....	2,127,133	46,706	1917 .....	1,733,156	47,328

**Imports of Coal.**

The total imports of coal of all classes in 1917 "entered for consumption" as per the published reports of the Department of Customs, were 20,857,460 tons valued at \$70,562,357, as compared with the total imports in 1916 of 17,580,603 tons valued at \$30,289,666.

Imports of coal into Canada are subdivided into three classes as follows: Anthracite, including anthracite dust; bituminous, round and run-of-mine; and bituminous slack such as will pass through a  $\frac{3}{4}$ -inch screen.

The imports of anthracite in 1917 were 5,320,198 tons valued at \$28,109,586 or an average of \$5.28 per ton, exceed. g by 749,383 tons, or 16.4 per cent the imports in 1916, which were 4,570,815 tons valued at \$22,216,363 or an average of \$4.86 per ton. The imports of bituminous coal of all classes were 15,537,262 tons valued at \$42,452,771, as against imports of 13,009,788 tons valued at \$16,073,303 in 1916. The increase in bituminous imports of 1917 over those of 1916, was thus 2,527,474 tons, or over 19 per cent.

The bituminous imports in 1917 included: bituminous, round, and run-of-mine, 12,407,466 tons valued at \$33,712,894, or an average of \$2.72 per ton, and bituminous slack, 3,129,776 tons, valued at \$8,739,877, or an average of \$2.79 per ton. The value per ton of the imports during 1916 of bituminous, round, and run-of-mine coal averaged \$1.30 per ton and of bituminous slack \$1.06 per ton. There was, therefore, not only a very large increase in the imports of coal but the average price was more than double that of the previous year.

The record of the exports of bituminous coal to Canada as published in the Reports of Trade and Navigation at Washington differs in some years considerably from the Canadian record, in partial explanation of which it should be noted that the Canadian record represents coal "entered for home consumption". This entry may be deferred several months from the actual time of import, thus causing a difference in the monthly and yearly record. Furthermore, it is understood that the United States record includes a certain amount of coal used for bunkering lake steamers which would not be included as an import into Canada. The United States record shows exports of bituminous coal to Canada during the twelve months ending December, 1917, of 18,206,727 short tons, as against 13,260,181 tons in 1916; 9,356,889 tons in 1915; 10,271,409 tons in 1914, and 15,115,733 tons in 1913.



## Annual Imports of Coal.

Calendar Year.	Bituminous round and run of the mine (a).		Anthracite coal and anthracite dust (b).		Bituminous slack such as will pass through $\frac{3}{4}$ " screen (c).	
	Short tons.	Value.	Short tons.	Value.	Short tons.	Value.
1907	6,370,152	13,232,446	3,141,873	14,506,120	1,139,256	1,121,949
1908	6,025,574	12,516,748	3,160,110	14,478,536	1,111,811	1,355,677
1909	5,625,043	11,455,818	3,017,844	13,906,152	1,230,017	1,469,589
1910	5,966,466	11,919,341	3,266,236	14,735,062	1,365,281	1,795,566
1911	8,905,815	18,407,603	4,020,577	18,794,192	1,632,500	2,090,796
1912	8,491,840	16,846,727	4,184,017	20,060,388	1,919,953	2,550,922
1913	10,743,473	21,756,658	4,642,057	22,034,839	2,816,423	4,157,622
1914	7,776,415	14,954,321	4,435,010	21,241,924	2,509,632	3,605,253
1915	6,106,794	7,564,369	4,072,192	18,753,980	2,286,916	2,027,256
1916	9,504,552	12,368,679	4,570,815	22,216,363	3,505,236	3,704,624
1917	12,407,486	33,712,894	5,320,198	28,109,586	3,129,776	8,739,877

(a) Duty, 53 cents per ton. (b) Coal, anthracite and anthracite coal dust; duty free. (c) Duty 14 cents per ton.

In view of the attention being given at the present time to the importance of imports of coal to Canada, additional tables have been introduced as follows: Showing the monthly imports of bituminous and anthracite coal since 1913, such figures as are available for the first few months of 1918 being added to the record.

The United States record of monthly exports to Canada are also included for comparison.

## Monthly Imports of Bituminous Coal into Canada.\*

(IN SHORT TONS.)

	1913.	1914.	1915.	1916.	1917.	1918.
January	827,428	917,558	547,772	1,124,918	1,031,719	1,134,493
February	861,813	851,591	653,016	942,811	760,545	1,460,391
March	1,026,503	1,140,943	547,756	918,206	1,114,958	1,175,076
April	682,286	713,764	417,133	727,467	1,331,449	986,052
May	1,106,935	611,918	481,908	894,505	893,055	1,541,537
June	1,298,167	634,383	661,569	1,239,882	1,260,652	1,442,412
July	1,192,914	639,417	752,229	1,066,713	1,581,361	1,670,806
August	1,353,495	850,340	846,162	1,188,822	1,890,925	1,670,397
September	1,795,093	1,082,544	680,151	1,287,554	1,567,773	1,604,802
October	1,178,649	1,166,197	900,450	1,314,286	1,582,797	.....
November	1,031,846	947,509	967,791	1,156,239	1,273,498	.....
December	1,197,767	729,883	937,773	1,118,380	1,248,532	.....
Total	13,559,896	10,286,047	8,393,710	13,009,788	15,537,262	.....

\*Compiled from the Monthly Reports on Trade and Navigation, Department of Customs, Ottawa.

### Monthly Imports of Anthracite Coal into Canada.\*

(IN SHORT TONS.)

	1913.	1914.	1915.	1916.	1917.	1918.
January.....	367,464	223,102	270,396	295,578	300,836	279,688
February.....	311,288	237,109	213,797	340,347	277,179	246,960
March.....	295,215	257,498	175,813	381,032	436,567	424,020
April.....	212,240	344,202	361,195	194,402	318,782	362,291
May.....	437,534	452,094	477,522	372,264	347,390	465,561
June.....	437,778	526,515	415,344	513,528	551,105	401,450
July.....	471,573	392,753	341,380	513,858	559,994	382,207
August.....	449,738	473,980	346,689	429,699	665,071	461,651
September.....	437,309	535,538	338,272	433,203	533,203	479,284
October.....	424,306	431,797	415,929	385,953	570,771	.....
November.....	420,998	306,568	370,344	383,103	413,200	.....
December.....	376,619	253,856	345,471	327,548	346,100	.....
Total.....	4,642,057	4,435,010	4,072,192	4,570,815	5,320,198	.....

\*Compiled from the Monthly Reports on Trade and Navigation, Department of Customs, Ottawa.

### Monthly Exports of Bituminous Coal from the United States to Canada.\*

(IN SHORT TONS.)

	1913.	1914.	1915.	1916.	1917.	1918.
January.....	633,020	631,510	396,715	600,616	654,350	510,022
February.....	622,933	493,597	438,905	605,684	646,008	647,855
March.....	824,935	694,810	308,203	611,640	884,498	951,196
April.....	892,781	443,102	426,970	740,865	1,022,171	1,263,030
May.....	1,647,061	790,229	660,253	1,467,229	1,569,297	1,978,799
June.....	1,588,266	889,119	978,028	1,476,453	2,017,989	2,019,816
July.....	1,716,094	1,126,562	1,138,383	1,457,326	1,555,972	2,098,600
August.....	1,765,659	1,694,668	1,060,717	1,708,697	2,715,628	2,194,099
September.....	1,827,309	1,347,282	1,058,176	1,519,550	1,739,580	2,038,673
October.....	1,543,887	1,097,164	1,224,880	1,196,122	2,392,509	.....
November.....	1,217,251	583,136	1,062,855	1,023,924	1,504,784	.....
December.....	836,517	480,230	704,804	852,076	1,503,640	.....
Total.....	15,115,733	10,271,409	9,356,889	13,260,181	18,206,727†	.....

\* Compiled from the Monthly Summary of Foreign Commerce of the United States, Washington, D.C.

† Total taken from December Report.

**Monthly Exports of Anthracite Coal from the United States to Canada.\***  
(IN SHORT TONS.)

	1913.	1914.	1915.	1916.	1917.	1918 (a).
January.....	335,974	215,004	211,435	288,521	330,844	298,295
February.....	400,796	227,506	198,202	324,354	285,135	254,597
March.....	172,001	181,610	140,128	337,814	408,337	145,041
April.....	348,251	439,961	498,532	237,291	656,731	381,677
May.....	553,473	525,774	461,976	495,609	480,633	476,123
June.....	464,689	479,045	394,502	567,764	677,350	424,203
July.....	434,806	367,556	299,837	432,375	437,493	443,001
August.....	424,135	506,843	328,516	431,379	760,253	461,220
September.....	357,739	435,918	310,400	391,873	501,899	495,840
October.....	471,312	374,540	380,417	374,565	561,083	.....
November.....	362,404	261,919	312,583	349,053	329,259	.....
December.....	245,753	204,231	316,281	329,776	623,463	.....
<b>Total.....</b>	<b>4,573,333</b>	<b>4,219,907</b>	<b>3,852,810</b>	<b>4,556,374†</b>	<b>6,048,570†</b>	.....

\* Compiled from the Monthly Summary of Foreign Commerce of the United States, Washington, D.C.  
† Total taken from December Report.

(a) Total exports. Exports to Canada not separately stated, but will exceed 95 per cent of total exports.

**Consumption of Coal.**

The total consumption of coal in Canada estimated on the basis of production, imports and exports was in 1917, 33,123,735 tons which included 12,313,603 tons of Canadian coal and 20,810,132 tons of imported coal.

Statistics of the annual consumption are given in the following tables:—

**Consumption of Coal, 1913-14-15-16-17.**

(IN SHORT TONS.)

	1913.	1914.	1915.	1916.	1917.
Production.....	15,012,178	13,637,529	13,267,023	14,493,395	14,046,759
Exports of Canada.....	1,562,020	1,423,126	1,766,543	2,135,359	1,733,156
Home consumption of Canadian coal..	13,450,158	12,214,403	11,500,480	12,348,036	12,313,603
Imports.....	19,291,953	14,721,057	12,465,902	17,580,603	20,857,460
Exports not produce of Canada.....	64,566	83,137	52,690	62,783	47,328
Canadian consumption of imported coal	18,132,397	14,637,920	12,406,212	17,517,820	20,810,132
<b>Total consumption of coal in Canada..</b>	<b>31,582,545</b>	<b>26,852,323</b>	<b>23,906,692</b>	<b>29,865,856</b>	<b>33,123,735</b>

**Annual Consumption of Coal.**  
(IN SHORT TONS.)

Calendar Year.	Canadian.		Imported.		Total.	Per capita.
	Short tons.	%	Short tons.	%		
1886	1,845,959	45.9	1,884,161	54.1	3,480,111	0.758
1887	1,848,365	45.7	2,192,260	54.3	4,040,625	0.871
1888	2,013,925	37.8	3,314,353	62.2	5,328,278	1.137
1889	1,992,988	44.4	2,490,931	55.6	4,483,919	0.946
1890	2,360,196	47.8	2,581,187	52.2	4,941,383	1.081
1891	2,606,490	46.7	2,980,222	53.3	5,586,712	1.153
1892	2,464,012	44.4	3,082,429	55.6	5,546,441	1.133
1893	2,823,187	47.6	3,110,462	52.4	5,933,649	1.198
1894	2,743,376	48.5	2,917,818	51.5	5,661,194	1.130
1895	2,467,109	45.7	2,933,752	54.3	5,400,861	1.066
1896	2,639,055	48.1	3,206,456	54.9	5,845,511	1.140
1897	2,790,977	47.3	3,124,485	52.7	5,924,462	1.143
1898	3,023,079	48.0	3,274,981	52.0	6,298,060	1.200
1899	3,631,882	47.0	4,092,361	53.0	7,724,243	1.454
1900	3,989,542	47.8	4,361,563	52.2	8,351,105	1.561
1901	4,912,664	50.5	4,810,213	49.5	9,722,877	1.810
1902	5,376,413	51.0	5,165,938	49.0	10,542,351	1.927
1903	6,005,745	52.2	5,491,870	47.8	11,507,605	2.055
1904	6,697,183	49.2	6,909,651	50.8	13,606,834	2.346
1905	7,032,661	48.9	7,343,880	51.1	14,376,541	2.362
1906	7,927,560	51.7	7,398,966	48.3	15,326,466	2.425
1907	8,617,352	45.0	10,549,563	55.0	19,166,855	2.947
1908	9,158,478	47.3	10,195,424	52.7	19,353,902	2.820
1909	8,913,376	47.9	9,711,826	52.1	18,625,202	2.682
1910	10,532,103	50.2	10,438,123	49.8	20,970,226	2.960
1911	9,822,749	40.5	14,424,949	59.5	24,247,698	3.384
1912	12,385,696	46.0	14,549,104	54.0	26,934,800	3.596
1913	13,450,158	42.6	18,132,387	57.4	31,582,545	4.071
1914	12,214,403	45.5	14,637,990	54.5	26,852,323	3.323
1915	11,500,490	48.1	12,406,212	51.9	23,906,692	2.820
1916	12,344,036	41.3	17,517,820	58.7	29,861,856	3.323
1917	12,313,603	37.2	20,810,132	62.8	33,123,735	3.323

In connexion with the records of consumption it may be of interest to record the very large percentage of Canadian coal consumption used by railway locomotives. During the twelve months ending June 30, 1917, the tonnage of coal used by locomotives amounted to no less than 9,788,424 tons.

The quantity of coal consumed by railway locomotives in recent years, as compiled from "Railway Statistics" published by the Department of Railways and Canals, is as follows:—

**Annual Consumption of Coal by Railway Locomotives.**  
(IN SHORT TONS.)

Year ending June 30.	Anthracite.	Bituminous.	Total.
1911	6,444	6,769,903	6,776,347
1912	5,374	7,732,938	7,738,312
1913	4,662	9,040,963	9,045,625
1914	5,271	8,268,186	8,273,457
1915	3,691	6,673,847	6,677,536
1916	4,899	8,672,455	8,677,354
1917	4,900	9,783,524	9,788,424

**Nova Scotia.**

The production of coal in Nova Scotia in 1917 was 6,327,091 tons, as compared with a production in 1916 of 6,912,140 tons, showing a decrease of 585,049 tons, or 8.46 per cent.

The total sales of coal during 1917 were, 5,293,115 tons, of which 4,681,700 tons were sold for consumption in Canada; 353,142 tons for export to United States, 258,264 tons for export to Newfoundland and other countries.

The total quantity used by producers under colliery boilers, in coke ovens, and in steel plants, was 1,933,976 tons including 306,374 tons used in making coke for other commercial purposes, and 727,602 tons used in the operation of the collieries, or by workmen.

A considerable tonnage of coal reported as sold for consumption in Canada is also used in the manufacture of coke, the total coal charged to coke ovens in the Province during the year being 1,046,279 tons.

The Dominion Coal Company has for many years been the principal operator, the total production of this firm's collieries at Cape Breton and at Springhill being 4,372,978 tons, or over 69 per cent of the Province's production and equivalent to over 31 per cent of the total Canadian production. The Nova Scotia Steel and Coal Company produced 644,321 tons, or 10.2 per cent of the total; the Acadia Coal Company 441,477 tons, or 6.9 per cent; the Inverness Railway and Coal Company, 227,753 tons, or 3.5 per cent; the Maritime Coal, Railway and Power Company, 228,353 tons; and the Interecolonial Coal Mining Company, 207,739 tons.

For a number of years Nova Scotia mines, chiefly those of Cape Breton, have been shipping from 2,000,000 to 2,500,000 tons of coal to Montreal and other Quebec markets, via the St. Lawrence. During the twelve months ending September, 1917, however, only 339,374 tons of Nova Scotia coal were marketed in Quebec province, as against 1,114,337 tons in 1916, and 2,048,222 tons in 1915.

**Coal Production by Companies, in Nova Scotia, 1917.**  
(IN SHORT TONS.)

	Total Sa. <sup>4</sup>	Used.		Production. <sup>2</sup>	Stocks.		Losses. <sup>3</sup>	Output.	
		For Coke. <sup>1</sup>	Colliery Consumption.		Workmen.	Jan. 1.			Dec. 31.
Inverness Ry. and Coal Co.	183,556		37,321	6,876	227,783	1,304	596	227,045	
Chimney Corner Mine (S. J. Doucet)	113		50		83			103	
St. Rose Mine (G. V. Evans)	2,522		274		163		218	391	
Atlantic Coal Co.	9,023		146		2,796			2,796	
Sterling Coal Co.	4,007		302	55	3,169		101	3,270	
Fenwick Coal Co., Ltd.	5,000		300		4,364			4,364	
Sydney Coal Co., Ltd.	3,595,654	304,874	300	57,885	5,300	35,667	26,951	5,300	
Dominion Coal Co., Ltd.	232,251	87,744	6,078	50,967	644,321	168	2,324	3,978,222	
Nova Scotia Steel and Coal Co., Ltd.	40,317	6,078	861	861	47,256	75		649,947	
The Bras d'Or Coal Co., Ltd.	17,114	1,276	1,042	1,042	18,386			47,181	
Milford Mining Co. (Alex. Sutherland)	57,697		1,007		60,346	642	307	18,300	
Greenwood Coal Co., Ltd.	892,214		35,676	13,687	441,417	2,977	7,828	69,011	
Acadia Coal Co., Ltd.	165,483		26,483	6,758	200,739	899	1,423	446,328	
Intercolonial Coal Mining Co.	198,045	3,015	26,396	4,912	238,553			291,763	
Maritime Coal, Ry. and Power Co.	7,551		310	187	8,018			8,018	
Jones & McKinnon (Provincial)	383,190		52,409	12,066	397,663	6,172	9,826	401,744	
Minutiae Coal Co., Ltd. (Springhill)	26,523		4,775	1,033	32,331		123	32,454	
Dominion Coal Co., Ltd.	15,749		403	349	16,551		11	16,551	
Strathcona Coal Mine (A. W. Pugsley)	3,892		57	125	4,074			4,065	
Fundy Mining Co.	3,061			488	3,559			3,559	
Royal Coal Co., Ltd.									
<b>Total</b>	<b>5,293,115</b>	<b>30,374</b>	<b>600,481</b>	<b>127,121</b>	<b>6,327,091</b>	<b>47,904</b>	<b>49,777</b>	<b>6,345,335</b>	

<sup>1</sup> Includes also coal used by producers for steel making and other purposes.  
<sup>2</sup> Production is obtained by adding sales and coal used.  
<sup>3</sup> Complete records of losses are not furnished by all producers.

**Coal Production by Companies, in Nova Scotia, 1916.**  
(IN SHORT TONS).

	Total sales.	Used.		Production <sup>2</sup>	Stocks.		Losses <sup>3</sup>	Output.
		For coke. <sup>1</sup>	Colliery consumption		Jan. 1.	Dec. 31.		
Inverness Ry. and Coal Co.	254,252		36,801	7,249	296,302	1,204		256,111
Sydney Coal Co., Ltd.	6,440		146	134	6,720			6,720
Dominion Coal Co., Ltd.	292,764		324,028	58,757	4,585,489	35,667	19,965	4,543,029
Cape Breton Coal, Iron and Ry. Co.	1,068				1,068			
Nova Scotia Steel and Coal Co., Ltd.	338,825	282,508	21,465	21,224	664,192	240		678,328
The Bras d'Or Coal Co., Ltd.	43,128		5,744	746	49,618	150		49,679
Alex. Sutherland (Milford Colliery)	8,556		1,093	240	9,888	75		9,888
Greenwood Coal Co., Ltd.	1,829		23	118	1,970			1,970
Acadia Coal Co., Ltd.	387,182		39,288	12,707	430,177	642		430,113
Intercolonial Coal Mining Co.	127,680	3,284	26,240	5,757	162,911	2,977		160,206
Maritime Coal, Ry. and Power Co.	203,368		25,233	4,276	232,877	900		230,718
Jones & McKinnon	4,954		246	123	5,303			5,303
Dominion Coal Co., Ltd. (Springhill)	315,252		63,478	11,920	390,648	6,172	221	382,472
Minudie Coal Co., Ltd.	50,122		6,903	1,494	58,519		2,167	61,088
Strathcona Coal Co., Ltd.	2,366				2,366			2,366
Atlantic Grindstone, Coal and Ry. Co.	672				672			672
Royal Coal Co., Ltd.	2,000		200		2,200	100		2,100
	5,950,547	285,892	550,896	124,815	6,912,140	48,477	37,128	6,911,995

<sup>1</sup>Includes also coal used by producers for steel making and other purposes. <sup>2</sup>Production is obtained by adding sacks and coal used. <sup>3</sup>Complete records of losses are not furnished by all producers.

## Output, Sales, Colliery Consumption, and Production of Coal in Nova Scotia.

Calendar Year.	Output.	Sold or used.	Colliery consumption	Production*	Price per ton of 2,240 lbs.	Value of production.
	Tons of 2,000 pounds.					
					¢ cts.	\$
1785 to 1873.....				8,023,670	1 75	12,543,840
1874.....	977,440	839,022	133,932	972,964	1 75	1,520,240
1875.....	874,905	791,610	139,003	940,613	1 75	1,454,084
1876.....	794,804	710,312	127,443	877,755	1 75	1,308,991
1877.....	848,390	769,513	119,702	890,215	1 75	1,375,830
1878.....	863,075	776,732	99,262	875,994	1 75	1,368,741
1879.....	882,863	771,259	91,961	866,220	1 75	1,333,409
1880.....	1,156,635	1,009,218	108,451	1,177,669	1 75	1,849,108
1881.....	1,259,183	1,159,216	129,844	1,280,050	1 75	2,000,079
1882.....	1,529,708	1,400,200	124,747	1,524,947	1 75	2,382,730
1883.....	1,543,259	1,453,226	125,793	1,578,009	1 75	2,466,570
1884.....	1,558,011	1,413,048	130,791	1,543,829	1 75	2,412,233
1885.....	1,514,470	1,405,051	142,559	1,547,900	1 75	2,418,735
1886.....	1,682,924	1,538,506	159,512	1,694,018	1 75	2,653,152
1887.....	1,871,330	1,702,948	156,560	1,858,503	1 75	2,904,057
1888.....	1,889,293	1,765,895	176,396	1,912,231	1 75	3,034,735
1889.....	1,907,032	1,741,720	177,107	1,918,827	1 75	2,968,167
1890.....	2,232,081	2,000,444	180,589	2,181,033	1 75	3,407,864
1891.....	2,290,158	2,071,938	193,981	2,267,919	1 75	3,543,624
1892.....	2,175,913	1,963,286	196,103	2,186,889	1 75	3,374,046
1893.....	2,489,807	2,214,818	230,076	2,444,924	1 75	3,829,194
1894.....	2,520,797	2,308,231	219,751	2,527,982	1 75	3,949,970
1895.....	2,339,727	2,068,270	216,875	2,226,145	1 75	3,471,750
1896.....	2,537,706	2,202,447	216,132	2,508,579	1 75	3,919,655
1897.....	2,929,835	2,290,032	203,622	2,493,554	1 75	3,866,179
1898.....	2,584,175	2,375,661	187,519	2,543,180	1 75	4,004,970
1899.....	2,599,296	2,950,067	198,765	3,148,822	2 00	6,022,898
1900.....	3,691,646	3,358,585	264,651	3,623,536	2 50	8,084,250
1901.....	4,270,557	3,829,462	337,696	4,184,068	1 75	6,496,982
1902.....	5,292,638	4,736,814	424,702	5,161,316	2 00	9,216,636
1903.....	5,841,429	5,123,607	539,731	5,653,338	2 00	10,995,240
1904.....	5,747,823	5,097,949	498,292	5,596,241	2 00	9,993,288
1905.....	5,821,022	5,167,476	479,107	5,646,583	2 00	10,083,184
1906.....	6,346,191	5,704,397	516,194	6,220,595	2 00	11,108,044
1907.....	6,468,583	5,864,406	489,727	6,354,133	2 25	12,784,900
1908.....	6,806,489	5,851,761	645,690	6,652,539	2 25	13,364,476
1909.....	5,718,871	5,066,912	585,177	5,652,089	2 25	11,364,643
1910.....	6,515,162	5,723,681	697,461	6,431,142	2 25	12,919,765
1911.....	7,125,551	6,358,080	646,340	7,004,420	2 25	14,071,379
1912.....	7,834,724	7,052,573	731,315	7,788,888	2 50	17,374,750
1913.....	8,135,194	7,257,006	723,067	7,480,073	2 50	17,812,663
1914.....	7,448,012	6,637,110	338,814	7,370,924	2 50	16,432,955
1915.....	7,553,739	6,818,773	644,697	7,463,370	2 50	16,659,308
1916.....	6,911,995	6,536,439	675,701	6,912,140	3 00	18,514,667
1917.....	6,345,335	5,699,489	727,602	6,327,091	3 44	19,410,737
Total.....				166,000,110		320,873,393

\* This production is obtained by adding sales and colliery consumption.



**Coal Trade by Counties in Nova Scotia. Calendar Years since 1906.**  
(IN SHORT TONS.)

Calendar Year.	Cumberland.		Pictou.		Cape Breton.		Other Counties.		Total.	
	Raised.	Sold.*	Raised.	Sold.*	Raised.	Sold.*	Raised.	Sold.*	Raised.	Sold.*
1906.....	659,734	566,308	769,496	657,310	04,407	4,221,203	312,554	259,286	6,546,191	794,267
1907.....	534,047	445,288	840,333	729,043	4,204,147	4,346,100	305,826	343,085	6,081,563	764,066
1908.....	602,157	530,648	849,802	678,025	4,240,633	4,267,346	432,877	373,743	6,006,489	8,051,761
1909.....	494,919	503,371	748,060	599,743	4,061,833	3,723,135	306,739	340,083	5,718,671	5,008,912
1910.....	350,363	298,706	714,846	598,678	5,035,800	4,571,347	414,138	374,860	6,515,163	5,023,681
1911.....	538,286	436,125	833,956	691,832	5,406,363	4,917,902	347,944	312,201	7,125,551	6,258,080
1912.....	716,914	585,138	765,678	641,860	6,008,286	5,580,765	312,736	284,780	7,834,734	7,052,573
1913.....	675,344	568,845	817,177	694,659	5,709,995	5,266,733	329,108	298,307	8,135,104	7,257,086
1914.....	702,496	572,765	681,356	571,063	5,767,566	5,468,292	286,624	226,549	7,460,042	6,627,110
1915.....	726,794	620,667	581,226	508,145	5,920,670	5,488,292	275,049	207,089	7,513,739	6,818,173
1916.....	685,517	579,914	612,611	528,460	5,317,756	4,874,793	296,111	264,262	6,911,965	6,226,439
1917.....	711,164	603,633	725,992	635,523	4,680,650	4,176,581	227,529	183,732	6,345,335	5,369,489

\* Sales include coal used for making coke and steel.

Distribution of Coal Sold by Nova Scotia Producers.

Fiscal years ending September 30.

Markets.	1913.		1914.		1915.		1916.		1917.	
	Short tons.	Per cent.	Short tons.	Per cent.	Short tons.	Per cent.	Short tons.	Per cent.	Short tons.	Per cent.
Nova Scotia—										
Transported by land.....	2,530,566	34.88	2,059,186	30.40	1,976,943	30.65	2,073,846	40.23	2,707,719	47.01
“ “ sea.....	380,365	5.24	308,551	5.34	392,340	6.08	491,591	7.40	518,573	9.01
Total Nova Scotia.....	2,910,929	40.12	2,467,737	35.74	2,369,283	36.73	3,165,437	47.63	3,226,292	56.02
New Brunswick.....	724,239	9.96	762,150	11.04	675,699	10.48	865,238	13.02	994,741	17.27
Prince Edward Island.....	107,612	1.48	107,275	1.55	93,171	1.45	92,876	1.40	115,548	2.01
Quebec.....	2,456,416	33.85	2,667,372	38.63	2,048,222	31.76	1,114,337	16.77	339,574	5.89
Newfoundland.....	235,810	3.25	252,660	3.66	233,735	3.63	281,259	4.23	264,914	4.60
United States.....	524,262	7.23	536,741	4.88	596,606	9.25	509,773	7.67	383,152	6.65
St. Pierre.....	7,449	0.10	9,673	0.14	11,799	0.18	6,485	0.10	6,768	0.11
Bunker coal.....	262,278	3.62	278,645	4.04	383,273	5.94	994,601	9.10	428,929	7.45
For time chartered boats.....	23,958	0.33	20,787	0.30	18,968	0.29	.....	.....	.....	.....
Less at sea.....	.....	.....	.....	.....	.....	.....	.....	.....	.....	.....
Other countries.....	3,202	0.04	1,312	0.02	8,749	0.13	5,388	0.08	.....	.....
Total.....	7,256,155	100.00	6,904,352	100.00	6,448,856	100.00	6,645,756	100.00	5,760,243	100.00

**Number and Class of Workmen employed in the Coal Mines of Nova Scotia, Year ending September 30, 1917.**

	Average Daily Force.							Total workmen.	Horses.
	Average days a month pit worked.	Surface.	Under-ground.	Cutting coal.	Total colliery days.	Transportation, commercial upkeep, repairs.	Total days.		
Dominion Coal Co. ....	24.7	786	3,325	774	1,447,914	1,604	1,850,130	6,489	500
Nova Scotia Steel & Coal Co. ....	25.1	342	1,003	562	574,368	162	623,325	2,069	95
Pear's Or Coal Co. ....	24.2	31	54	57	41,236	2	41,811	144	14
Sydney Coal Co. ....	25	4	4	9	5,100	1	5,300	18	—
Inverness Railway & Coal Co. ....	24.1	110	207	220	155,193	142	196,230	679	32
Acadia Coal Co. ....	24.5	240	356	428	301,056	77	323,635	1,101	51
Intercolonial Coal Co. ....	25.1	121	113	138	112,493	22	119,262	394	24
Greenwood Coal Co. ....	25	5	6	20	9,000	3	9,000	33	—
Milford Coal Co. ....	25	2	2	14	6,400	2	6,000	20	—
Cumberland Railway & Coal Co. ....	22.6	187	304	227	194,294	72	214,306	790	61
Joggins Mines. ....	25	68	154	156	113,400	7	115,365	385	4
Minudie Coal Co. ....	23	30	24	36	24,840	20	30,560	110	4
Provincial Mining Co. ....	24	9	9	8	7,488	6	9,216	32	6
Atlantic Coal Co. ....	22	2	2	5	2,376	1	2,640	10	—
Eastern Coal Co. ....	22	5	3	8	2,110	1	2,375	17	—
Strathcona Coal Co. ....	25	4	7	24	9,660	8	11,868	43	4
Stirling Coal Co. ....	23	9	2	17	6,300	2	6,760	30	—
Fundy Mine. ....	19.4	3	3	3	1,571	2	1,920	11	1
Fenwick Coal Co. ....	23.7	9	16	10	2,488	8	3,056	43	—
Kimberly Coal Co. ....	22	15	14	15	8,712	—	8,712	44	1
St. George. ....	22	6	4	11	4,158	—	4,158	21	1
		1,988	5,611	2,742	3,029,177	2,142	3,577,408	12,483	798

### New Brunswick.

The production of coal in New Brunswick in 1917 was 189,095 tons, as against 143,540 tons in 1916, showing an increase of 45,555 tons or 31.7 per cent. This is the largest production of coal that has been recorded for this Province.

Through the courtesy of the operators the department is permitted to publish a record of the production from individual properties, as shown in the accompanying tables:—

#### Production of Coal in New Brunswick, 1917.

(IN SHORT TONS.)

	Days in operation.	Total sales.	Total for colliery use.*	Total production.
Sheffield Coal Co., Ltd. ....	5 mos.	2,455	535	2,890
Harvey Welton, Minto. ....	260	17,558		17,558
The Minto Coal Co., Ltd., Minto. ....	311	112,367	2,150	114,517
Rothwell Coal Co., Ltd., Rothwell. ....	282	11,818	655	12,473
J. Coakley, Minto. ....	208	2,314		2,314
Grand Lake Coal Co., Ltd., Minto. ....	12 mos.	11,166	484	11,650
Northfield Coal Co., Ltd, Minto. ....	Contract.	6,539		6,539
G. H. King, Chipman. ....	304	17,726	242	17,968
Dean Coal Co., Adamsville. ....	Contract.	1,963	232	2,195
All others (3). ....		775	116	891
Total New Brunswick. ....		184,681	4,414	189,095

\* Includes consumption under boilers, etc., and coal used by workmen.

#### Production of Coal in New Brunswick, 1916.

(IN SHORT TONS.)

	Days in operation.	Total sales.	*Total for colliery use.	Total production.
The Minto Coal Co., Ltd., Minto. ....	301	91,177	1,511	92,688
Rothwell Coal Co., Ltd., Rothwell. ....	294	5,529	672	6,201
J. Coakley, Minto. ....	100	808		808
Grand Lake Coal Co., Ltd., Minto. ....	158	4,000		4,000
Northfield Coal Co., Ltd., Minto. ....		5,021	297	5,318
G. H. King, Chipman. ....	300	10,980	15	11,130
Dean Coal Co., Adamsville. ....		2,892	204	3,096
All others (3). ....		19,999	300	20,299
Total New Brunswick. ....		140,406	3,134	143,540

\* Includes consumption under boilers, etc., and coal used by workmen.

## Annual Production of Coal in New Brunswick.

Calendar Year.	Short tons.	Value.	Average per ton.	Calendar Year.	Short tons.	Value.	Average per ton.
		\$	\$ cts.			\$	\$ cts.
1887.....	10,040	23,607	2 35	1904.....	9,112	18,224	2 00
1888.....	5,730	11,050	1 93	1905.....	29,400	58,800	2 00
1889.....	5,673	11,733	2 07	1906.....	34,076	68,152	2 00
1890.....	7,110	13,850	1 95	1907.....	34,584	77,814	2 25
1891.....	5,422	11,030	2 03	1908.....	60,000	135,000	2 25
1892.....	6,768	9,375	1 39	1909.....	49,029	98,496	2 25
1893.....	6,200	9,837	1 59	1910.....	55,455	110,910	2 00
1894.....	6,469	10,264	1 59	1911.....	55,781	111,562	2 00
1895.....	9,500	14,250	1 50	1912.....	44,780	89,560	2 00
1896.....	7,500	11,250	1 50	1913.....	70,311	166,637	2 37
1897.....	6,000	9,000	1 50	1914.....	98,049	241,075	2 46
1898.....	6,160	9,240	1 50	1915.....	127,391	309,612	2 43
1899.....	10,523	15,792	1 50	1916.....	143,540	386,016	2 69
1900.....	10,000	15,000	1 50	1917.....	189,095	708,010	3 74
1901.....	17,630	51,857	2 94				
1902.....	18,795	39,680	2 11	Total.....	1,156,123	2,886,683	
1903.....	16,000	40,000	2 50				

The coal producing areas include the Grand Lake coal-fields in Queens and Sunbury counties, and the Beersville area in Kent county. In the Grand Lake area the coal seams which vary in thickness from 20 to 32 inches are found at a depth of from 30 to 60 feet below the surface.

## Saskatchewan.

The coal deposits of Saskatchewan furnish coal of the lignite variety only and the production in 1917 from 57 collieries was 355,445 tons valued at \$602,451, as compared with 281,300 tons valued at \$441,836 in 1916, an increase of 74,145 tons, or 26 per cent.

The 1917 production included 334,625 tons of coal sold and 20,820 tons used by producers for colliery consumption by workmen, or in brickmaking.

The output of coal comes chiefly from the vicinity of Estevan located on the Souris river, near the southeastern corner of the Province. Coal deposits exist for 75 or 100 miles in a northwest-southeast direction along the Souris river, on Big Muddy creek draining Willowbunch lake (only lately reached by a branch line of railway) and on the south branch of the Saskatchewan river, about 100 miles southwest of Saskatoon.

The annual production and the production by the principal operators in 1916 and 1917 is shown in the following tables:—

**Production of Coal in Saskatchewan in 1917, by Principal Operators, over 1,000 tons each.**

Name of Company.	Days in operation.	Total sales.	*Total for colliery use.	Total production.
Anld, Jno. A., Roche Percee.....	81	1,242		1,242
Bienfait Mine, Bienfait.....	254	75,744	1,649	77,393
Blood, Adelbert, Fir Mountain.....	162	1,076		1,076
Caillet, David, Willowbunch.....	151	1,325		1,325
Campkin, Robt., Readlyn.....	210	1,020		1,020
Eidsness Bros., Gladmar.....	274	2,078		2,078
Estevan Coal & Brick Co., Ltd., Estevan.....	12 mos.	6,700	3,000	9,700
Heuvel, Hy. V., Hart.....	9 "	1,389		1,389
Manitoba & Sask. Coal Co., Ltd., Bienfait.....	238	71,457	4,802	76,259
McNeil & Rooks, Estevan.....	233	2,228		2,228
Nicholson, H., ".....	126	1,692	22	1,714
Parkinson, Geo., ".....		5,413		5,413
Sask. Coal, Brick & Power Co., Ltd., Shand.....	262	40,009	3,850	43,859
Western Dominion Collieries, Ltd., Taylorton.....	252	105,954	7,260	113,214
Wilson, Alex., Taylorton.....	138	3,717		3,717
All other operators (42).....		13,581	237	13,818
<b>Total production Saskatchewan.....</b>		<b>334,625</b>	<b>20,820</b>	<b>355,445</b>

\*Includes consumption under boilers, etc., and coal used by workmen.

**Production of Coal in Saskatchewan in 1916, by Principal Operators.**

(IN SHORT TONS.)

Name of Company.	Days in operation.	Total sales.	Total for colliery use.*	Total production.
Western Dom. Collieries, Ltd., Taylorton.....	186	86,000	5,200	91,200
Manitoba & Saskatchewan Coal Co. Ltd., Bienfait...	197	67,057	4,771	71,828
The Bienfait Mine, Bienfait.....	211	55,132	2,174	57,306
Saskatchewan Coal, Brick & Power Co. Ltd., Shand.....	210	25,156	1,400	26,556
Geo. Parkinson, Estevan.....	All year	7,241		7,241
Estevan Coal & Brick Co., Ltd., Estevan.....	51	2,500	2,000	4,500
McNeil & Rooks, Estevan.....	265	3,360		3,360
Eidsness Bros., Gladmar.....	281	3,237		3,237
Alex. Wilson, Taylorton.....	123	2,826	20	2,846
H. Nicholson, Estevan.....	130	1,859	45	1,904
A. G. Clark, Roche Percee.....	126	1,600	100	1,600
Jos. Bastien, Estevan.....	148	1,153		1,153
Henry V. Heuvel, Hart.....	110	1,030		1,030
All other operators.....		7,455	84	7,539
<b>Total production, Saskatchewan.....</b>		<b>265,506</b>	<b>15,794</b>	<b>281,300</b>

\* Includes consumption under boilers, etc., and coal used by workmen.

## Annual Production of Coal in Saskatchewan.

Calendar Year.	Short tons.	Value.	Average per ton.	Calendar Year.	Short tons.	Value.	Average per ton.
		\$	\$ cts.			\$	\$ cts.
1887.....	(a) 400	800	2 00	1905.....	107,598	152,334	1 42
1890.....	200	200	1 00	1906.....	108,398	164,146	1 51
1891.....				1907.....	151,232	252,437	1 67
1892.....	5,400	9,325	1 73	1908.....	150,556	253,790	1 69
1893.....	8,325	12,485	1 50	1909.....	192,125	296,339	1 54
1894.....	(b) 15,051	15,153	1 01	1910.....	181,156	293,923	1 62
1895.....	15,769	31,538	2 00	1911.....	206,779	347,248	1 68
1896.....	16,796	25,059	1 50	1912.....	225,342	368,135	1 63
1897.....	25,000	37,500	1 50	1913.....	212,897	358,192	1 68
1898.....	25,000	37,500	1 50	1914.....	232,299	374,245	1 61
1899.....	25,000	37,500	1 50	1915.....	249,197	385,246	1 52
1900.....	40,500	60,750	1 50	1916.....	281,300	441,836	1 57
1901.....	45,000	72,000	1 60	1917.....	355,445	662,451	1 86
1902.....	70,400	112,640	1 52	Total.....	3,179,571	5,139,411	.....
1903.....	116,703	169,618	1 45				
1904.....	121,885	187,021	1 50				

(a) From Turtle Mountain district, Manitoba.

(b) Including a small quantity from the Turtle Mountain district, Manitoba.

## Alberta.

Lignite, bituminous and anthracite coals are all produced in Alberta.

In 1917 bituminous coal contributed 46.4 per cent of the total production, lignite 51.3 per cent, and anthracite 2.3 per cent.

The total production of coal in Alberta in 1917 was the highest recorded for the Province and amounted to 4,736,368 tons valued at \$14,153,685, or an average of \$2.99 per ton, compared with a production in 1916 of 4,559,054 tons valued at \$11,336,577, or an average of \$2.50 per ton.

There are many small operators in the Province, the number of names on the list being over 300. In 1917 there were 52 companies reporting a production in excess of 10,000 tons and the aggregate production by these firms was 96.1 per cent of the total for the Province. Thirteen of these companies reported a production exceeding 100,000 tons each, the largest operators being the West Canadian Collieries, Ltd., with 476,082 tons from Bellevue and Greenhill collieries; the Canadian Pacific Railway with a total of 433,728 tons from Bankhead and Lethbridge; and the North American Collieries, Ltd., with 384,807 tons from Lovetville, Coalhurst, Evansburg, Dodds, and Drumheller.

Of the total production 4,321,564 tons were reported as sales including 4,231,325 tons sold for consumption in Canada; 90,239 tons sold for export to United States; 414,804 tons were used by producers including 102,609 tons charged to coke ovens, and 312,195 tons used for colliery operation and by workmen.

The monthly production of anthracite, bituminous and lignite coals during 1917 and part of 1918 and the production of each of the larger collieries during 1917 and 1916 is shown in the following tables:—

### Monthly Production of Coal in Alberta, 1917.

(IN SHORT TONS.)

Month.	Anthracite.	Bituminous.	Lignite.	Total.
January .....	12,906	194,321	285,731	492,958
February .....	10,158	197,617	240,889	448,664
March .....	12,202	265,674	175,299	453,175
April .....	10,504	118,926	80,854	210,284
May .....		40,996	59,293	100,199
June .....		17,469	85,774	103,243
July .....	9,126	180,633	167,555	357,314
August .....	11,314	258,010	221,436	490,760
September .....	9,954	231,771	216,167	457,892
October .....	10,448	240,496	292,249	543,193
November .....	11,597	266,862	319,624	598,083
December .....	10,016	192,530	284,057	486,603
	108,225	2,199,305	2,428,838	4,736,368

### Monthly Production of Coal in Alberta, 1918.

(IN SHORT TONS.)

Month.	Anthracite.	Bituminous.	Lignite.	Total.
January .....	11,358	245,648	358,936	615,942
February .....	11,722	224,421	231,419	467,562
March .....	12,533	244,796	166,959	424,288
April .....	12,753	370,943	101,193	384,909
May .....	16,927	260,228	146,640	417,795
June .....	8,732	260,256	231,613	500,601
July .....	9,932	270,230	268,867	549,029
August .....	9,006	271,009	276,333	556,348
September .....	8,611	262,203	263,428	534,242
October .....				
November .....				
December .....				



## Production and Output of Coal in Alberta, 1917, by Districts.

(IN SHORT TONS.)

	Operators reporting.	Total sales.	Total colliery consumption.*	Total production.	Per cent.	Output.
Banff..... Anthracite	1	30,801	77,421	108,225	2 29	118,765
Crownest..... Bituminous	5	1,066,316	122,140	1,188,457	25 09	1,188,934
Cannora..... "	1	181,103	15,844	196,947	4 16	196,917
Brazeau..... "	2	230,894	5,929	266,823	5 63	267,506
Jasper Park..... "	2	241,550	7,183	248,733	5 26	248,733
Yellowhead Pass..... "	4	152,405	6,777	159,182	3 36	161,620
Mountain Park..... "	1	132,895	6,269	139,164	2 94	139,164
Total.....	16	2,065,967	241,563	2,307,530	48 72	2,321,669
Pincher Creek..... Lignite	4	4,652		4,652	0 10	5,058
Lethbridge..... "	11	543,199	70,818	614,017	12 36	622,687
Magrath..... "	3	936		936	0 02	936
Milk River..... "	15	7,991	56	8,047	0 18	8,316
Talser..... "	12	131,847	25,526	157,373	3 32	171,195
Bow Island..... "	13	5,992	51	6,043	0 13	6,577
Medicine Hat..... "	5	13,880	86	13,976	0 30	14,971
Aldersyde..... "	8	7,076		7,076	0 15	7,465
High River..... "	3	1,126		1,126	0 02	1,102
Drumheller..... "	19	605,026	26,741	631,767	13 31	672,738
Big Valley..... "	2	26,006	748	26,753	0 56	26,753
Brooks..... "	3	9,233		9,233	0 19	9,487
Hanna..... "	18	25,164	506	25,670	0 54	26,682
Lacombe..... "	19	16,047	50	16,097	0 34	17,347
Trochu..... "	10	14,531	492	15,023	0 32	16,451
Three Hills..... "	6	21,402	1,055	22,457	0 47	23,965
Carbon..... "	7	4,252	49	4,301	0 09	4,459
Little River..... "	12	9,805	57	9,862	0 21	10,384
Canrose..... "	5	55,640	985	56,625	1 20	61,322
Tofield..... "	3	65,480	3,317	68,806	1 45	72,307
Clover Bar..... "	9	240,602	15,606	256,208	5 41	262,078
Edmonton..... "	7	113,117	7,663	121,080	2 56	121,080
Namoo..... "	4	17,776	419	18,195	0 38	20,504
Cardiff..... "	3	226,043	11,818	237,861	5 02	257,587
Wabamun..... "	1	13,484	50	13,534	0 29	19,680
Pembina..... "	1	74,763	7,148	81,911	1 73	88,613
Peace River..... "	3	210		210		215
Total Lignite.....	211	2,255,597	173,241	2,428,838	51 28	2,551,968
Grand Total.....	227	4,321,564	414,804	4,736,368	100 00	4,873,637

\* Includes consumption under boilers, etc., and coal used by workmen.

## Production of Coal in Alberta in 1917, by Principal Collieries.

(IN SHORT TONS)

Name of Company, and Mine address.	Days in operation.	Total sales.	Total colliery consumption.*	Total production.
Alberta Block Coal Co., Ltd., Drumheller.....	143	59,594	1,912	61,506
Alberta Coal Mining Co., Ltd., (The) Cardiff.....	241	67,270	3,600	70,870
Atlas Coal Co., Ltd., Drumheller.....	148	15,515	1,781	17,296
Big Valley Collieries, Big Valley.....	303	25,414	748	26,162
Blain & Gilliland, Banner mine, Cardiff.....	287	54,753	2,716	57,469
Illue Diamond Coal Co., Ltd., Brule Mines.....	256	152,168	3,211	155,379
Brazeau Collieries, Ltd., Nordegg.....	229	248,900	5,585	254,485
Bush Mine Coal Co., Beverly.....	301	26,220	740	26,966
Cadomin Coal Co., Ltd., Coalspur.....	111	14,125	60	14,185
Canada West Coal Co., Ltd., Taber.....	224	90,225	20,260	110,485
Can. Pac. Ry., Bankhead.....	254	30,894	(a) 77,421	108,225
" " Galt No. 3, Lethbridge.....	230	89,536	16,082	105,617
" " Galt No. 6, Lethbridge.....	237	193,436	26,450	219,886
Cannore Coal Co., Ltd., Cannore.....	240	181,103	15,844	196,947
Cardiff Collieries, Ltd., Cardiff.....	154	104,020	5,502	109,522
Chinook Coal Co., Ltd., Commerce.....	250	64,870	11,333	76,203
City of Lethbridge Coal Mine, Lethbridge.....	269	12,204	.....	12,204
Clover Bar Coal Co., Ltd., Clover Bar.....	284	19,776	1,500	21,276
Dawson Coal Co., Ltd., (The) Edmonton.....	285	18,436	1,150	19,586
Dobell Coal Co., Ltd., (The) Tofield.....	298	30,798	1,910	32,708
Drumheller Land Co. (The) Drumheller.....	223	43,234	3,348	46,582
Ellis Coal Co., Ltd., Three Hills.....	296	19,419	986	20,406
Federal Coals, Limited, Lethbridge.....	266	14,399	32	14,421
Franco-Canadian Collieries, Ltd., Frank.....	216	92,127	16,596	108,723
Great West Coal Co., Ltd. (The) Clover Bar.....	266	71,670	4,017	75,687
Hillcrest Collieries, Ltd., Hillcrest.....	219	192,613	10,598	203,211
Humberstone Coal Co., Beverly.....	279	93,882	9,125	103,007
International Coal and Coke Co., Ltd., Coleman.....	241	116,548	(b) 70,639	187,187
Jasper Park Collieries—Jasper Mine.....	234	64,681	3,906	68,587
" " Miette Mine.....	199	24,701	66	24,767
Lakeside Coals Limited, Wabunan.....	.....	13,484	50	13,534
McGillivray Creek Coal and Coke Co., Ltd., Coleman.....	235	205,278	7,975	213,253
McPeak Coal Co., Ltd., Edmonton.....	267	18,375	1,360	19,735
Midland Collieries, Ltd., Midlandvale.....	190	60,050	2,747	62,837
Mountain Park Coal Co., Ltd., Mountain Park.....	279	132,895	6,267	139,164
Newcastle Coal Co., Ltd., Drumheller.....	117	28,377	852	29,229
North American Collieries, Ltd.:—				
Pacific Pass Colliery, Lovettville.....	284	66,903	6,142	73,045
Penubia Colliery, Evansburgh.....	246	74,763	7,148	81,911
Regal Colliery, Dodds.....	275	14,766	32	14,798
Monarch Colliery, Drumheller.....	12 months.	31,803	2,651	34,454
Lethbridge Colliery, Coalhurst (Kipp).....	219	104,348	16,251	120,599
Ottewell Coal Co., Clover Bar.....	251	10,600	100	10,700
Premier Coal Co., Ltd., Drumheller.....	143	26,898	312	27,210
Regal Collieries, Limited, Taber.....	242	9,002	1,632	10,634
Rock Springs Coal and Brick Co., Ltd., Elean.....	269	27,133	2,746	29,879
Rosedale Coal and Clay Products Co., Ltd., Rosedale..	289	87,100	36	87,136
Rose Deer Coal Mining Co., Ltd., Wayne.....	241	75,548	3,790	79,338
Round Hill Collieries, Ltd., Roundhill.....	205	19,314	400	19,714
Spicer Coal Co., Ltd., (The) Dinant.....	282	16,397	553	16,950
Saunders Creek Domestic and Steam Coal Co.....	12 months.	11,994	344	12,338
Star Coal Mines, Ltd., Aeria.....	235	63,131	1,223	64,353
Sterling Coal Co., Ltd., Drumheller.....	175	18,703	2,920	21,623
Sturgeon Consolidated Collieries, Ltd., Nanao.....	295	14,821	414	15,235
Tofield Coal Co., Ltd., Tofield.....	241	32,990	1,087	34,077
Twin City Coal Co., Ltd., Edmonton South.....	296	71,442	4,976	76,418
West Canadian Collieries, Bellevue.....	205	263,223	11,412	274,635
" " Greenhill.....	217	196,527	4,920	201,447
Western Commercial Co., Ltd., Wayne.....	223	81,765	3,850	85,615
Yellowhead Coal Co., Ltd., Coalspur.....	227	30,130	.....	30,130
All other operators.....	.....	4,141,483	409,867	4,551,370
.....	.....	180,651	4,917	184,998
Total Alberta.....	.....	4,321,564	414,804	4,736,368

\* Includes consumption under boilers, etc., and coal used by workmen.

Includes 50,704 tons of coal used in the manufacture of briquettes. Total quality coal and briquettes sold or used in colliery operation 151,523 tons.

(b) Including for manufacture of coke, 51,905.

## Production of Coal in Alberta in 1916, by Principal Collieries.

(IN SHORT TONS.)

Name of Company and Mine address.	Days in operation.	Total sales.	Total colliery consumption.*	Total production.
Alberta Block Coal Co., Ltd., Drumheller	155	39,990	1,095	41,085
The Alberta Coal Mg. Co., Ltd., Cardiff	104	40,744	4,000	44,744
Big Valley Collieries, Big Valley	175	11,504	250	11,754
Blain & Gilliland, Banner Mine, Cardiff	254	30,000	3,400	33,400
Blue Diamond Coal Co., Ltd., Brule Mines	293	56,938	328	57,266
Brazeau Collieries, Ltd., Nordegg	248	274,605	7,125	281,730
Bush Mine Coal Co., Beverly	285	20,102	470	20,572
Canada West Coal Co., Ltd., Taber	194	81,632	10,562	92,194
Can. Pac. Ry., Bankhead	150	152,691	(b) 27,667	180,358
Can. Pac. Ry., Galt No. 3, Lethbridge	241	122,004	17,362	139,366
Can. Pac. Ry., Galt No. 6, Lethbridge	242	236,443	32,810	269,253
Canmore Coal Co., Ltd., Canmore	295	219,004	19,197	238,201
Cardiff Collieries, Ltd., Cardiff	222	124,065	7,791	131,856
Chinook Coal Co., Ltd., Commore	253	68,639	12,611	81,250
Clover Bar Coal Co., Ltd., Clover Bar	227	16,018	3,030	19,048
The Dawson Coal Co., Ltd., Edmonton	252	16,252	7,200	23,452
The Dobell Coal Co., Ltd., Toffield	287	22,007	1,872	23,879
The Drumheller Land Co., Ltd., Drumheller	214	31,338	2,655	34,013
Ellis Coal Co., Ltd., Three Mills	288	10,727	1,015	11,772
Franco-Canadian Collieries, Ltd., Frank	201	176,265	16,004	192,269
Georgetown Collieries, Canmore	(184 mos.)	33,234	2,575	35,809
The Great West Coal Co., Ltd., Clover Bar	277	67,790	2,676	70,475
Hillcrest Collieries, Ltd., Hillcrest	267	240,603	10,961	251,567
Humberstone Coal Co., Beverly	306	42,928	4,422	47,350
International Coal & Coke Co., Ltd., Coleman	293	126,346	(c) 85,501	211,847
Jasper Park Collieries—Pocahontas	277	90,868	4,402	95,270
Miette	257	206,406	7,492	213,898
McGillivray Ck. Coal and Coke Co., Ltd., Coleman	260	50,545	3,050	53,595
Midland Collieries, Ltd., Drumheller	303	134,863	4,673	139,536
Mountain Park Coal Co., Ltd., Mountain Park	188	34,350	1,017	35,367
Newcastle Coal Co., Ltd., Drumheller	275	61,188	5,877	67,065
North American Collieries, Ltd.	285	64,069	6,876	70,945
Pacific Pass Coll., Lovettville	264	205,317	19,381	224,698
Peubina " Evansburgh	**135	6,556	3,392	9,948
Lethbridge " Coalhurst (Kipp)	203	12,000	75	12,075
St. Albert " St. Allert	230	30,250	400	30,650
Ottewell Coal Co., Clover Bar	230	19,350	1,960	21,310
Premier Coal Co., Ltd., Drumheller	185	17,472	2,025	19,497
Red Deer Valley Coal Co., Ltd., Drumheller	221	14,756	466	15,216
Rock Springs Coal & Brick Co., Ltd., Elean	209	40,000	2,550	42,550
Rosedale Coal & Clay Products Co., Ltd., Rosedale	269	27,231	450	27,681
Rose Deer Coal Mg. Co., Ltd., Wayne	295	12,668	600	13,268
Round Hill Collieries, Ltd., Roundhill	237	56,387	1,166	57,553
The Spicer Coal Co., Ltd., Dinant	244	13,163	2,120	15,283
Star Coal Mines, Ltd., Aerial	207	35,937	1,484	37,421
Sterling Coal Co., Ltd., Drumheller	245	50,203	3,357	62,560
Toffield Coal Co., Ltd., Toffield	228	323,132	14,902	338,034
Twin City Coal Co., Ltd., Edmonton S	274	188,189	3,978	192,167
West Can. Collieries, Bellevue				
" " Greenhill				
All other operators		3,974,062	380,305	4,354,367
		199,505	5,182	204,687
Total Alberta		4,173,567	385,487	4,559,054

\* Includes consumption under boilers, etc., and coal used by workmen.

(a) Briquettes, 106,814; (b) Briquettes, 1,144; (c) For manufacture of coke, 67,106.

† Company now out of business.

\*\* Now abandoned.

## Annual Production of Coal in Alberta.

Calendar Year.	Short tons.	Value.	Average per ton.	Calendar Year.	Short tons.	Value.	Average per ton.
		\$	\$			\$	\$
1886.	43,220	81,112	1.88	1902.	402,819	960,601	2.38
1887.	74,152	157,577	2.13	1903.	465,803	1,117,541	2.25
1888.	115,124	183,354	1.59	1904.	601,732	1,404,524	2.12
1889.	97,304	179,640	1.85	1905.	931,917	1,993,915	2.14
1890.	128,763	188,206	1.54	1906.	1,240,300	2,614,762	2.10
1891.	174,181	437,243	2.51	1907.	1,591,579	3,336,280	2.11
1892.	178,970	460,605	2.57	1908.	1,685,631	4,127,311	2.45
1893.	230,070	580,260	2.55	1909.	1,994,741	4,839,100	2.43
1894.	184,940	473,827	2.56	1910.	2,894,489	7,065,730	2.44
1895.	169,885	382,526	2.25	1911.	1,511,036	3,979,264	2.63
1896.	209,162	581,832	2.78	1912.	3,240,577	8,113,525	2.50
1897.	242,163	630,408	2.60	1913.	4,014,755	10,418,941	2.59
1898.	315,068	787,720	2.50	1914.	3,683,015	9,350,392	2.54
1899.	309,600	774,000	2.50	1915.	3,360,818	8,283,079	2.46
1900.	311,450	778,625	2.50	1916.	4,539,054	11,396,577	2.50
1901.	340,275	850,687	2.50	1917.	4,730,398	14,153,985	2.99
				Total.....	40,135,141	101,187,902	

## British Columbia.

The production of coal in British Columbia in 1917 was 2,433,888 tons, as compared with 2,584,061 tons in 1916, a decrease of 150,173 tons, or 5.9 per cent.

Of the total production in 1917, 1,933,944 tons were reported as sales, including 1,046,020 tons sold for consumption in Canada; 845,128 tons sold for export to United States, and 42,796 tons sold for export to other countries; 499,944 tons were used by producers, including 378,590 tons for making coke and 221,354 tons for the operation of collieries and by workmen. The production and distribution of the collieries on Vancouver island of the Crowsnest district, and of the interior at Nicola and Princeton, are shown separately in the following tables.

The three largest operators in the Province were: The Crows Nest Pass Coal Company, with a total production of 504,762 tons; the Canadian Collieries (Dunsmuir), Limited, with 690,111 tons, and the Western Fuel Company, with 714,533 tons. These three companies contributed 78.5 per cent of the Province's production.

## Coal Production by Districts in British Columbia, 1917.

(IN SHORT TONS.)

Coal.	Vancouver Island.	Nicola and Princeton.	Crowsnest and East Kootenay.	Total.
Sold for consumption in Canada.....	824,437	139,142	82,441	1,046,020
Sold for export to United States.....	576,708	15,471	252,949	845,128
Sold for export to other countries.....	42,796			42,796
Total sales.....	1,443,941	154,613	335,390	1,933,944
Used for making coke or brick.....	60,804		217,786	278,590
Used for colliery consumption, etc.....	148,456	13,118	64,780	221,354
Production.....	1,648,201	167,731	617,956	2,433,888
Per cent.....	67.7	6.9	25.4	

**Coal Production by Districts in British Columbia, 1918.**  
(IN SHORT TONS.)

Coal.	Vancouver Island.	Nicola and Princeton.	Crowsnest and East Kootenay.	Total.
Sold for consumption in Canada.....	770,800	103,535	84,357	958,761
Sold for export to United States.....	498,672	6,306	481,287	986,425
Sold for export to other countries.....	6,908	.....	.....	6,908
Total sales.....	1,276,447	109,901	517,744	1,904,092
Used for making coke or brick.....	53,436	400	304,280	458,116
Used for colliery consumption, etc.....	141,087	12,602	76,214	229,903
Production.....	1,472,970	122,903	988,188	2,584,061

## Coal Production by Collieries in British Columbia, 1917.

(IN SHORT TONS.)

Colliery.	Sold.			Total.	Used.		Production.	Lost in washing, etc.	Stocks.		Output.
	In Canada.	To United States.	To other countries.		Making coke.	Under colliery boilers, etc.			First of year.	Last of year.	
Harwood.	11,448	33,225		44,673	760		45,392			6,291	51,563
No. 1 Mine.	184,919	263,469		448,388	50,202		507,710		5,287	1,137	503,000
Reserve.	73,509	71,832		145,341	16,100		161,541		3,228	1,611	159,694
East Wellington No. 1.	55,083	291		55,284	9,303		64,585		3,312		66,871
Wellington Extension Mine, Ladysmith	133,002	61,097	12,332	206,431	1,129		208,874	8,544	1,444	967	204,118
Conroy Mines, Cumberland.	251,022	86,888	39,244	368,154	30,684		411,237	128,900	3,973	2,756	508,912
South Wellington Mines	77,601	48,959		126,560	22,733		149,333	19,372	1,151	1,039	160,613
Grant.	17,853	10,917		28,770	845		29,615				29,615
Mitchel.	10,699	24,496		35,095	17,691		142,415		35		142,415
Coal Creek.	33,214	161,797		195,011	39,268		302,347		36	71	302,264
Corbin.	38,537	66,746		105,283	7,911		113,194				113,194
Middleboro.	88,372			88,372	5,289		93,661		327	140	93,474
Merritt.	14,167			14,167	793		14,960				14,960
Inland.	7,828			7,828	701		8,529		213		8,764
Princeton.	28,775	15,471		44,246	6,335		50,581		13	252	50,564
	1,046,020	845,128	42,796	1,933,944	221,354	578,569	2,433,898	231,753	39,169	15,373	2,609,634

- |   |   |
|---|---|
| <ol style="list-style-type: none"> <li>1. Western Fuel Company.</li> <li>2. British Columbia Coal Mining Co.</li> <li>3. Canadian Collieries (Dunsmuir), Ltd.</li> <li>4. Pacific Coast Coal Mines, Ltd.</li> </ol> | <ol style="list-style-type: none"> <li>5. Nanosee Collieries, Ltd.</li> <li>6. Crow's Nest Pass Coal Co., Ltd.</li> <li>7. Corbin Coal and Coke Co., Ltd.</li> <li>8. Middleboro Collieries, Ltd.</li> <li>9. Merritt Collieries, Ltd. (formerly Diamond Vale).</li> <li>10. Inland Coal and Coke Co., Ltd.</li> <li>11. Princeton Coal and Laid Co., Ltd.</li> </ol> |
|---|---|

**Coal Production by Collieries in British Columbia, 1916.**  
(IN SHORT TONS.)

Colliery.	Sold.		Total.	Used.		Production.	Lost in washing, etc.	Stocks.		Output.
	In Canada.	To United States.		To other countries.	Making coals.			Under colliery boilers, etc.	First of year.	
1. No. 1 Mine.	208,298	303,676	490,628		50,150	530,748		12,043	5,237	528,942
2. Reserve	25,241	45,211	70,441		24,170	94,611		3,029	3,228	97,222
3. East Wellington No. 1	74,865	1,048	76,033		8,804	84,837	3,351	10,429	512	87,637
3. Wellington Extension Mine, Ladysmith	147,407	68,489	215,896		20,816	236,701	60,256	7,325	1,250	237,797
4. Comox Mines, Cumberland	240,942	71,927	312,869	55,436	11,106	379,411	136,836	2,153	3,973	522,807
4. South Wellington Mines	74,056	46,221	120,277		26,002	146,450	26,002	52	57	171,895
5. Michel	15,223	60,918	76,141	176,216	21,073	273,430		59	30	273,413
6. Coal Creek	62,992	206,563	369,555	218,014	49,837	637,456				637,427
6. Corbin	6,142	65,876	72,018		5,264	77,282				77,262
7. Middleboro	50,232		50,232		3,229	53,461		303	327	53,466
8. Inland	33,437		33,437	400	2,437	36,274	1,100	290	190	37,394
9. Princeton	19,768	6,366	26,134		4,676	30,810	2,201	34	16	32,500
10. Miscellaneous	98		98		240	238				238
	958,761	938,425	1,904,092	450,066	229,403	2,584,061	221,953	36,521	15,960	2,788,453

1. Western Fuel Company.
2. Vancouver-Nanaimo Coal Mining Co.
3. Canadian Collieries (Dunsmuir), Ltd.
4. Pacific Coast Coal Mines, Ltd.

5. Crow's Nest Pass Coal Co., Ltd.
6. Corbin Coal and Coke Co., Ltd.
7. Middleboro Collieries, Ltd.

8. Inland Coal and Coke Co., Ltd.
9. Princeton Coal and Land Co., Ltd.
10. Pacific Coast Colliery of B.C.

## Annual Production of Coal in British Columbia.

Calendar Year.	Output.	Home consumption.	Sold for export.	Production *.		Price per long ton.	Value.
				Long tons.	Short tons.		
						\$ cts.	\$
1836 to 1873	480,785				538,480	4 00	1,923,140
1874	81,547	25,023	56,038	81,061	90,788	3 00	243,183
1875	110,145	31,252	66,392	97,644	109,361	3 00	292,932
1876	139,192	17,856	122,329	140,185	157,007	3 00	420,555
1877	154,052	24,311	115,381	139,692	156,455	3 00	419,076
1878	170,846	26,166	164,682	190,848	213,750	3 00	572,544
1879	241,301	40,294	192,096	232,390	260,277	3 00	697,170
1880	267,595	46,513	225,849	272,362	305,045	3 00	817,086
1881	228,357	40,191	189,323	220,514	257,056	3 00	688,542
1882	282,139	56,161	232,411	288,572	323,201	3 00	865,716
1883	213,299	64,786	149,567	214,353	240,075	3 00	643,059
1884	394,070	87,388	306,478	393,866	441,130	3 00	1,181,598
1885	365,506	95,227	237,797	333,024	372,987	3 00	999,072
1886	326,636	85,987	249,205	335,192	375,415	3 00	1,065,576
1887	415,360	99,216	334,839	434,055	486,142	3 00	1,302,165
1888	480,301	115,953	365,714	481,667	539,467	3 00	1,445,001
1889	579,830	124,574	443,675	568,249	636,439	3 00	1,704,747
1890	678,140	177,075	508,270	685,345	767,586	3 00	2,056,035
1891	1,026,097	202,697	806,479	1,069,176	1,130,277	3 00	3,027,528
1892	826,335	196,223	640,579	836,802	937,218	3 00	2,510,406
1893	978,294	207,851	768,917	976,768	1,093,990	3 00	2,930,304
1894	1,012,953	165,776	827,642	993,418	1,112,628	3 00	2,960,254
1895	939,654	188,349	756,334	944,683	1,058,045	3 00	2,834,049
1896	894,882	261,984	634,238	896,222	1,003,769	3 00	2,688,666
1897	802,296	290,310	619,860	910,170	1,019,390	3 00	2,730,510
1898	1,136,485	375,423	752,863	1,128,286	1,263,680	3 00	3,394,858
1899	1,306,324	526,058	751,711	1,277,769	1,431,101	3 00	3,833,307
1900	1,590,178	685,667	914,184	1,509,851	1,791,833	3 00	4,799,553
1901	1,691,557	799,666	914,163	1,713,829	1,919,488	3 00	5,141,487
1902	1,641,626	837,871	776,809	1,614,680	1,808,441	3 00	4,844,040
1903	1,450,663	947,499	549,449	1,496,948	1,676,581	3 00	4,490,844
1904	1,685,698	1,129,465	533,593	1,663,068	1,862,625	3 00	4,989,174
1905	1,736,696	1,089,667	647,343	1,737,010	1,945,452	3 00	5,211,030
1906	1,899,076	1,236,476	679,829	1,916,305	2,146,262	3 00	5,748,915
1907	2,219,602	1,438,402	673,114	2,111,516	2,364,898	3 50	7,390,306
1908	2,111,931	1,486,511	597,157	2,083,668	2,333,798	3 50	7,292,838
1909	2,388,196	1,585,232	741,667	2,326,899	2,606,127	3 50	8,144,147
1910	3,152,207	1,798,873	1,175,007	2,973,880	3,330,745	3 50	10,408,580
1911	2,304,794	1,657,422	612,696	2,270,118	2,542,532	3 50	7,945,413
1912	2,857,345	1,898,213	965,963	2,865,176	3,208,997	3 50	10,028,116
1913	2,587,357	1,799,643	623,946	2,423,589	2,714,420	3 50	8,482,562
1914	2,182,164	1,397,036	602,785	1,990,821	2,230,799	3 50	6,999,374
1915	1,962,817	1,191,219	653,078	1,844,297	2,065,613	3 50	6,455,041
1916	2,487,012	1,465,152	844,045	2,307,197	2,584,061	3 50	8,075,190
1917	2,375,745	1,380,325	792,789	2,173,114	2,433,888	3 79	8,235,716
Total				51,693,052	57,896,219		168,879,405

\*This production is obtained by adding "Home Consumption" and "Sold for Export."  
 †52,935 tons of this amount were exported as sales without the division into "Home Consumption" and "Sold for Export."



## Yukon.

Coal production in the Yukon in 1917 was reported as 4,872 tons, all the product of the Tantalus mine of the Five Fingers Coal Company, near Whitehorse.

The colliery of the Northern Light, Power and Coal Company, on Coal creek, has not been operated during the past two years, and the mining equipment is now reported as having been dismantled and removed.

## Annual Production of Coal in Yukon Territory.

Calendar year.	Short tons	Value.	Average per ton.		Calendar year.	Short tons	Value.	Average per ton.	
			\$	cts.				\$	cts.
1901 .....	5,864	86,230	14	70	1910 .....	16,185	110,925	6	85
1902 .....	4,910	37,280	7	59	1911 .....	2,840	12,780	4	50
1903 .....	1,849	29,584	16	00	1912 .....	9,245	44,958	4	86
1904 .....					1913 .....	19,722	95,945	4	86
1906 .....	7,000	21,000	3	00	1914 .....	13,443	53,760	4	00
1906 .....	7,000	28,000	4	00	1915 .....	9,724	38,896	4	00
1907 .....	15,000	60,000	4	00	1916 .....	3,300	13,206	4	00
1908 .....	3,847	21,158	5	50	1917 .....	1,872	29,232	16	00
1909 .....	7,364	49,502	6	72	Total .....	132,165	732,450		

\*Part of this production was mined in 1900.

†Value not reported, but estimated.

## COKE.

The accompanying statistics cover only the production of coke in by-product and Beehive coke oven plants and do not include retort coke recovered by gas companies.

Both domestic and imported coal are used in the manufacture of coke in Canadian coke oven plants.

In 1917, 1,379,038 tons of domestic coal, and 549,885 tons of imported coal were charged to coke ovens, from which was obtained an output of 1,231,865 tons of coke, thus averaging 0.639 tons of coke per ton of coal charged. Coke from by-product ovens comprised 74 per cent of the total.

In 1916, 1,501,835 tons of domestic, and 633,076 tons of imported coal were charged to coke ovens, from which was obtained an output of 1,448,782 tons of coke, thus averaging 0.679 tons of coke per ton of coal charged. Coke from by-product ovens comprised 69 per cent of the total.

The amount of coke sold, or used by coke producers in 1917, was 1,245,862 tons, as compared with 1,469,741 tons in 1916, a decrease of 223,879 tons, or over 15 per cent.

In addition to the tonnage sold or used by producers, there was imported during 1917, 970,106 tons of coke, while the exports totalled 23,595 tons. The Canadian consumption in 1917 was, therefore, 2,192,373 tons, an increase of 14,055 tons over the estimated consumption in 1916. The consumption of oven coke during recent years has been as follows: 1,285,228 tons in 1908; 1,449,369 tons in 1909; 1,581,832 tons in 1910; 1,677,188 tons in 1911; 1,981,832 tons in 1912; 2,186,170 tons in 1913; 1,509,068 tons in 1914, and 1,772,461 tons in 1915.

## Coke Production, 1917.

(In short tons.)

Province	Coal charged to ovens.	Coke output.	Stock on Hand.		Coke sold or used.	Per Cent of total production.	Value of coke sold or used.
			Jan. 1.	Dec. 31.			
Nova Scotia .....	1,046,279	645,069	1,114	1,597	643,757	51.67	\$ 3,218,285
Ontario.....	* 549,885	375,014	16,458	2,424	389,048	31.23	2,155,326
Alberta .....	51,905	31,196	959	506	31,649	2.54	181,982
British Columbia	280,834	180,586	4,122	3,300	181,406	14.56	1,106,488
Total... ..	1,928,923	1,231,865	22,653	7,827	1,245,862	100.00	\$ 6,662,581

\* All imported coal.

## Coke Production, 1916.

(In short tons.)

Province.	Coal charged to ovens.	Coke output.	Stock on Hand.		Coke sold or used.	Per cent of total production.	Value of coke sold or used.
			Jan. 1.	Dec. 31.			
Nova Scotia .....	985,063	653,836	1,711	1,114	654,433	44.53	\$ 2,617,732
Ontario.....	* 633,076	452,502	33,913	13,908	472,507	32.15	2,008,155
Alberta .....	67,106	42,548	361	959	41,960	2.85	167,800
British Columbia	449,666	299,896	2,949	1,994	300,851	20.47	1,255,725
Total.....	1,134,911	1,448,782	38,934	17,975	1,469,741	100.00	\$ 6,049,412

\* All imported coal.

## Distribution of Coke Production, 1917.

(In short tons.)

	Nova Scotia.	Ontario.	Alberta.	British Columbia.	Total.
Sold in Canada .....	1,723		31,617	167,040	200,380
Sold for export .....			32	14,237	14,269
Total sales .....	1,723		31,649	181,277	214,649
Used by maker in blast furnace or other wise .....	642,034	389,048		131	1,031,213
Total sold or used .....	643,757	389,048	31,649	181,406	1,245,862
Number of ovens in operation Dec. 31 ..	723	102	102	730	1,657
Number of ovens idle Dec. 31. ....	83	8	114	670	875

## Annual Production of Coke.

Calendar Year.	Short Tons.	Value.	Average per Ton	Calendar Year.	Short Tons.	Value.	Average per Ton.
1886.....	35,396	\$ 101,940	\$ 2 88	1902.....	502,043	\$ 1,519,185	\$ 3 03
1887.....	40,423	135,951	3 36	1903.....	561,318	1,734,404	3 09
1888.....	45,373	134,181	2 96	1904.....	564,083	2,032,048	3 66
1889.....	54,539	154,043	2 84	1905.....	700,488	2,436,211	3 48
1890.....	56,450	166,298	2 95	1906.....	782,055	2,863,503	3 66
1891.....	57,084	175,592	3 08	1907.....	842,003	3,583,468	4 26
1892.....	59,135	160,249	2 85	1908.....	858,257	3,449,361	4 02
1893.....	61,078	161,790	2 65	1909.....	862,011	3,484,393	4 04
1894.....	58,044	148,551	2 56	1910.....	902,715	3,462,872	3 84
1895.....	53,356	143,047	2 68	1911.....	935,661	3,630,410	3 88
1896.....	49,619	110,257	2 22	1912.....	1,411,229	5,164,331	3 66
1897.....	60,689	176,457	2 91	1913.....	1,530,499	5,919,596	3 87
1898.....	87,600	296,000	3 26	1914.....	1,023,860	3,658,514	3 55
1899.....	100,820	350,022	3 47	1915.....	1,170,473	4,258,580	3 64
1900.....	157,134	649,140	4 13	1916.....	1,463,741	6,049,412	4 12
1901.....	365,531	1,228,225	3 36	1917.....	1,245,862	6,662,581	5 35

## Annual Production of Coke by Provinces.

Calendar Year.	Nova Scotia.		Ontario.		Alberta.		British Columbia.	
	Short Tons.	Value.	Short Tons.	Value.	Short Tons.	Value.	Short Tons.	Value.
		\$				\$		\$
1897.....	41,532	90,950					19,154	85,507
1898.....	48,400	111,000					39,200	175,000
1899.....	62,459	178,767					38,561	171,255
1900.....	61,767	223,395					95,367	425,745
1901.....	222,694	590,560					142,837	637,665
1902.....	363,330	899,930					138,713	619,255
1903.....	371,745	888,094					189,753	846,310
1904.....	275,927	808,022			20,984	78,936	257,172	1,148,090
1905.....	386,366	1,054,712			44,866	179,464	269,256	1,202,035
1906.....	476,364	1,540,976			69,486	268,042	236,265	1,054,485
1907.....	524,110	1,688,070			76,321	297,595	241,572	1,049,432
1908.....	505,929	1,658,151			75,645	309,019	276,683	1,482,191
1909.....	492,992	1,608,092			87,233	366,734	281,786	1,509,567
1910.....	508,058	1,655,775	24,685	148,110	121,578	486,312	248,394	1,172,675
1911.....	557,554	1,814,977	259,554	1,318,303	36,216	146,251	82,327	350,879
1912.....	625,918	1,840,129	379,854	1,707,000	105,684	424,027	299,773	1,190,832
1913.....	722,038	2,352,153	419,287	1,961,000	67,403	269,612	321,771	1,306,213
1914.....	343,289	1,118,614	386,314	1,352,699	29,059	116,236	265,198	1,071,565
1915.....	585,873	1,905,766	285,251	1,141,004	23,826	95,394	276,523	1,116,562
1916.....	654,433	2,617,732	472,507	2,008,155	41,950	167,800	300,851	1,255,750
1917.....	643,757	3,218,785	389,048	2,155,326	31,649	181,982	181,408	1,106,488

## Annual Exports of Coke.

Calendar Year	Short Tons.	Value.	Calendar Year.	Short Tons.	Value.
		\$			\$
1897.....	2,987	6,078	1908.....	54,708	248,759
1898.....	3,774	8,394	1909.....	74,667	329,051
1899.....	5,557	18,726	1910.....	57,971	250,715
1900.....	41,529	131,278	1911.....	3,852	39,323
1901.....	57,505	176,990	1912.....	57,744	252,763
1902.....	62,568	180,820	1913.....	68,235	308,410
1903.....	32,608	135,957	1914.....	67,838	306,117
1904.....	102,463	345,631	1915.....	35,869	160,053
1905.....	116,071	509,908	1916.....	48,589	221,334
1906.....	37,003	168,571	1917.....	23,595	137,318
1907.....	70,617	320,357			

## Annual Imports of Oven Coke.

Calendar Year.	Short Tons.	Value.	Calendar Year.	Short Tons.	Value.
		\$			\$
1907.....	624,649	2,206,084	1913.....	723,906	2,180,830
1908.....	426,971	1,135,125	1914.....	553,046	1,585,259
1909.....	661,425	1,508,627	1915†.....	637,857	1,608,464
1910.....	737,088	1,908,725	1916.....	757,116	2,229,078
1911.....	751,389	1,843,248	1917.....	970,106	6,517,260
1912.....	628,174	1,702,856			

† Duty free.

The Nova Scotia coke was made at Sydney and Sydney Mines, the ovens formerly operated at Westville being idle throughout the year.

In Ontario the production came from the Algoma Steel Corporation plant at Sault Ste. Marie.

In Alberta the coke oven plants at Lille and Passburg were idle, while the plant at Coleman was operated throughout the greater part of the year.

In British Columbia coke was made by the Crows Nest Pass Coal Company at Fernie and Michel, and by the Canadian Collieries (Dunsmuir), Ltd., at Union Bay.

The coke production of the eastern provinces is used almost entirely in the iron and steel industry, while that of the western provinces is used chiefly by the copper and lead smelters, finding a market in the United States as well as in Canada.

### Coke Oven By-products.

The coke oven plants of the Dominion Iron and Steel Company at Sydney, and the Algoma Steel Corporation at Sault Ste. Marie, are by-product plants, and the recoveries of coke oven by-products in 1917 included 8,277,078 gallons of tar; 9,941 tons of sulphate of ammonia, together with important quantities of benzol, toluol, and solvent naphtha and naphthalene.

#### Annual Production of Coke Oven By-Products.

Year.	Tar.	Sulphate of Ammonia.	Year.	Tar.	Sulphate of Ammonia.
	Gallons.	Short Tons.		Gallons.	Short Tons.
1901.....	2,662,612	1,614	1910.....	3,963,591	3,491
1902.....	4,094,185	2,393	1911.....	6,464,155	7,124
1903.....	3,281,249	3,207	1912.....	8,428,896	11,289
1904.....	1,649,197	1,773	1913.....	8,371,600	10,608
1905.....	3,407,784	2,500	1914.....	5,714,172	8,572
1906.....	3,725,723	2,364	1915.....	7,365,931	10,448
1907.....	4,424,615	1,738	1916.....	9,012,292	11,040
1908.....	4,450,166	3,342	1917.....	8,277,078	9,941
1909.....	4,016,824	3,416			

The imports of sulphate of ammonia in 1917 are reported as 566,969 pounds, valued at \$26,062 as against imports in 1916 of 293,096 pounds, valued at \$9,672, and imports in 1915 of 503,158 pounds, valued at \$14,637, and imports in 1914 of 763,597 pounds, valued at \$21,335.

Exports of sulphate of ammonia during the nine months ending December 31, 1917, were 8,047 tons, valued at \$693,377.

The export during the previous years has not been separately recorded.



**Classification of Persons employed in the Lignite, Bituminous, and Anthracite Coal-fields, Alberta,  
in 1916.**

	UNDERGROUND.					ABOVE GROUND.						Total underground and above ground.	
	Super- vision.	Miners and helpers.	Haulage employees	Mechanics and skilled labour.	Others.	Total.	Super- vision.	Mechanics and skilled labour.	Clerical assis- tance.	Others.	Coke ovens.		Briquette plants.
Lignite.....	183	2,157	451	142	204	3,137	82	245	77	591	.....	.....	995
Bituminous.....	100	1,228	425	105	391	2,258	43	194	57	564	.....	.....	848
Anthracite.....	7	92	8	1	33	141	5	44	8	87	.....	11	155
Total.....	299	3,477	884	248	628	5,536	130	483	142	1,242	26	11	2,034

### British Columbia.

The production of coal, in British Columbia in 1916 was 2,584,061 tons as compared with 2,065,613 tons in 1915, an increase of 518,448 tons, or 25 per cent.

Of the total production in 1916, 1,904,092 tons were reported as sales including 958,761 tons sold for consumption in Canada; 938,425 tons sold for export to the United States, and 6,906 tons sold for export to other countries; 679,969 tons were used by producers including 450,066 tons for making coke and 229,903 tons for the operation of collieries and for workmen.

The production of collieries on Vancouver Island, was 1,472,970 tons, of which 770,869 tons were sold for consumption in Canada; 498,672 tons for export to the United States, and 6,906 tons for export to other countries, 55,436 tons were used in the coke ovens at Comox, and 141,087 tons were used in the operation of collieries and by workmen. Vancouver Island collieries produced 57 per cent of the production of the Province, while compared with the previous year there was an increase of 464,502 tons or about 46 per cent.

The production in the Crowsnest district was 988,188 tons of which 84,357 tons were sold for consumption in Canada, and 433,387 tons for export to the United States; 394,230 tons were used for making coke, and 76,214 tons were used in the operation of collieries and by workmen. This district contributed 38.2 per cent of the total in 1916, and the production exceeded that of 1915 by 36,899 tons.

The production of Nicola and Princeton, etc., was 122,903 tons, of which 103,535 tons were sold for consumption in Canada, and 6,366 tons for export to the United States; and 12,602 tons were used in the operation of collieries and by workmen. These areas contributed about 5 per cent of the total, and the production showed an increase of 17,047 tons, as compared with 1915.

The three largest operators were the Crow's Nest Pass Coal Company with 910,886 tons, the Canadian Collieries (Dunsmuir), Limited, with 616,112 tons, and the Western Fuel Company with 625,562 tons. These three companies contributed over 83 per cent of the Province's production.

### Coal Production by Districts in British Columbia, 1916.

(IN SHORT TONS.)

Coal.	Vancouver Island.	Nicola and Princeton.	Crowsnest and East Kootenay.	Total.
Sold for consumption in Canada.....	770,869	103,535	84,357	958,761
Sold for export to United States.....	498,672	6,366	433,387	938,425
Sold for export to other countries.....	6,906	.....	.....	6,906
Total sales.....	1,276,447	109,901	517,744	1,904,092
Used for making coke or brick.....	55,436	400	394,230	450,065
Used for colliery consumption, etc.....	141,087	12,602	76,214	229,903
Production.....	1,472,970	122,903	988,188	2,584,061



Statistics of the production of coal by provinces in 1916 and 1915, and comparisons of 1916 production with that of 1915, and of the production of 1915 with that of 1914, are given in the tables following:—

### Production of Coal by Provinces, 1916.

Province.	Average No. of men employed.	Wages paid.	PRODUCTION OF COAL.			Per cent of total quantity.
			Short tons.	Value.	Average per ton.	
Nova Scotia.....	10,851	\$8,161,297	6,912,140	\$18,514,662	\$2.68	47.73
New Brunswick.....	327	212,332	143,540	386,016	2.69	0.99
Saskatchewan.....	409	234,986	281,300	441,836	1.57	1.94
Alberta.....	7,060	813,209	4,559,054	11,386,577	2.50	31.48
British Columbia.....	4,949	3,454,912	2,584,061	8,075,190	3.12½	17.84
Yukon Territory.....	15	7,500	3,300	13,200	4.00	0.02
	23,611	20,884,236	14,483,395	38,817,481	2.68	100.00

### Production of Coal by Provinces, 1915.

Province.	Average No. of men employed.	Wages paid.	PRODUCTION OF COAL.			Per cent of total quantity.
			Short tons.	Value.	Average per ton.	
Nova Scotia.....	12,557	\$8,133,085	7,463,370	\$16,659,308	\$2.23	56.25
New Brunswick.....	332	201,373	127,391	309,612	2.43	0.96
Saskatchewan.....	344	203,657	230,107	365,246	1.52	1.81
Alberta.....	6,349	4,840,213	3,360,818	8,283,079	2.46	25.33
British Columbia.....	4,957	3,974,622	2,065,613	6,455,041	3.12½	15.57
Yukon Territory.....	35	32,250	9,724	38,896	4.00	0.08
	24,574	17,385,200	13,267,023	32,111,182	2.42	100.00

### Comparison of Production, 1914 with 1915, and 1915 with 1916.

Province.	(1) INCREASE OR (d) DECREASE.			
	Years 1914 and 1915.		Years 1915 and 1916.	
	Short tons.	Per cent.	Short tons.	Per cent.
Nova Scotia.....	(i) 92,446	1.25	(d) 551,230	7.39
New Brunswick.....	(i) 29,342	29.92	(i) 16,149	12.68
Saskatchewan.....	(i) 7,808	3.36	(i) 41,193	17.16
Alberta.....	(d) 322,197	8.75	(i) 1,198,236	35.65
British Columbia.....	(d) 174,186	7.78	(i) 518,448	25.10
Yukon Territory.....	(d) 3,719	27.66	(d) 6,424	66.06
Total for Canada.....	(d) 370,506	2.72	(i) 1,216,372	9.17

It will be noted that, with the exception of the Yukon, the western provinces and also New Brunswick, have made substantial increases in production in 1916, whereas Nova Scotia has shown a falling off. The proportion of the total production contributed by the different provinces therefore shows some variations from the previous years. Nova Scotia

with a production of 6,912,140 tons, a decrease of over 7 per cent, is still the largest producer, being credited with 47.7 per cent of the total, as against 56.2 per cent in 1915. Alberta, with an increase of 1,198,236 tons over the 1915 production (equivalent to 35.6 per cent) is again the second largest producer with 31.5 per cent of the total. The British Columbia production increased by 518,448 tons, or 25 per cent and amounted to 17.8 per cent of the total. Saskatchewan with an increase of 41,193 tons, or 17.2 per cent contributed only 1.9 per cent of the total, and New Brunswick and the Yukon each less than one per cent.

The relative importance of the different provinces as coal producers for a number of years past is shown in the next table, in which is set forth the proportional contribution of each province to the total tonnage of coal produced in Canada. For the first time the coal-fields on the Atlantic sea-board have produced less than half the total, although from 1910 to 1915 the combined production of the western provinces has been only a little less than 50 per cent of the total.

#### Percentage of Production Contributed by Provinces.

Province.	1874.	1890.	1900.	1910.	1911.	1913.	1914.	1915.	1916.
	%	%	%	%	%	%	%	%	%
Nova Scotia.....	91	71	62.9	50.25	62.35	53.62	54.77	57.21	48.72
New Brunswick.....									
Saskatchewan*			0.7	1.40	1.83	1.42	1.70	1.81	1.94
Alberta*		4	5.4	22.2	13.34	26.75	27.01	25.33	31.48
British Columbia.....	8	25	31.0	35.40	22.45	13.08	16.42	15.57	17.84
Yukon Territory.....				0.13	0.03	0.13	0.10	0.08	0.02

\*Alberta and Saskatchewan were established as provinces on September 1, 1905. For the purpose of comparison, the coal production during the years previous to that date has been separated according to the present boundaries of these Provinces.

The production and distribution of coal mined, by provinces, during 1915 and 1916, is shown in the following tables. The total sales for consumption in Canada during 1916 were 10,701,530 tons, an increase of 874,818 tons over 1915. The sales for export to the United States were 1,451,075 tons, an increase of 120,357 tons over 1915, and the sales to other countries were 284,513 tons, a falling off of 12,830 tons from 1915. The total sales of Canadian coal were 12,437,118 tons, as against 11,454,773 tons in 1915. The quantity used by colliery operators in the manufacture of coke, steel or brick, etc., was 804,814 tons, while 1,241,463 tons were used in the operation of collieries and by workmen, both in excess of the quantities similarly used during the previous year. The total stocks reported at the end of December were 78,702 tons, as against stocks at December 31, 1915, of 171,205 tons and stocks at the end of December, 1913, of 500,477 tons.

### Coal Production by Districts in British Columbia, 1915.

(IN SHORT TONS.)

Coal.	Vancouver Island.	Nicola and Princeton.	Crowneast and East Kootenay.	Total.
Sold for consumption in Canada.....	559,587	88,427	91,867	739,881
Sold for export to United States.....	292,669	5,293	407,817	705,779
Sold for export to other countries.....	25,668			25,668
<b>Total sales</b> .....	<b>877,924</b>	<b>93,720</b>	<b>499,684</b>	<b>1,471,328</b>
Used for making coke or brick.....	20,115		384,710	404,825
Used for colliery consumption, etc.....	110,429	12,136	66,895	189,460
<b>Production</b> .....	<b>1,008,468</b>	<b>105,856</b>	<b>931,289</b>	<b>2,065,613</b>

**Coal Production by Collieries in British Columbia, 1916.**  
(IN SHORT TONS.)

Colliery.	SOLD.			USED.			Lost in washings, etc.	STOCKS.		Output.
	In Canada.	To United States.	To other countries.	Total.	Making coke.	Under colliery boilers, etc.		First of year.	Last of year.	
1. No. 1 Mine.....	208,238	265,676	6,714	480,628	.....	50,120	530,748	12,043	5,237	523,942
2. Reserve.....	25,241	45,211	192	70,644	.....	24,170	84,814	820	3,228	97,222
3. Wellington Extension Mine, Lady Smith.....	74,985	1,048	.....	76,033	.....	8,804	84,837	3,023	512	87,857
4. Connaught Mines, Cumberland.....	147,407	68,489	.....	215,896	.....	20,805	236,701	10,429	1,259	287,787
5. South Wellington Mines.....	240,942	71,927	.....	312,869	55,436	11,106	379,411	126,436	3,975	502,897
6. Michel.....	74,056	46,321	.....	120,377	.....	26,082	146,459	7,255	1,151	171,486
7. Coal Creek.....	15,223	60,918	.....	76,141	176,216	21,073	273,430	52	35	213,413
8. Corbin.....	62,992	306,593	.....	369,585	218,014	49,857	637,456	59	30	637,427
9. Middleboro.....	6,132	65,876	.....	72,018	.....	5,284	77,302	.....	.....	55,302
10. Inland.....	8,132	50,252	.....	58,384	.....	5,229	63,613	303	327	63,613
11. Princeton.....	33,437	33,437	.....	66,874	400	2,457	70,734	70	190	70,734
12. Miscellaneous.....	19,768	6,366	.....	26,134	.....	4,676	30,810	34	16	32,994
	958,761	938,425	6,906	1,904,092	450,066	229,903	2,584,061	36,521	15,960	2,785,338

- 1. Western Fuel Company.
- 2. Vancouver-Nanaimo Coal Mining Co.
- 3. Canadian Collieries (Dunsmuir), Ltd.
- 4. Pacific Coast Coal Mines, Ltd.
- 5. Crow's Nest Pass Coal Co., Ltd.
- 6. Corbin Coal and Coke Co., Ltd.
- 7. Middleboro Collieries, Ltd.
- 8. Inland Coal and Coke Co., Ltd.
- 9. Princeton Coal and Land Co., Ltd.
- 10. Pacific Coast Colliery of B.C.

## Coal Production by Collieries in British Columbia, 1915.

(IN SHORT TONS.)

Colliery.	SOLD.			Total.	USED.		Production.	Lost in washing, etc.	STOCKS.		Output.
	In Canada.	To United States.	To other countries.		Making coke.	Under colliery boilers, etc.			First of year.	Last of year.	
1. No. 1 Mine.	157,125	230,665	2,463	390,253		38,852	429,105		7,690	12,043	433,499
Reserve.	8,459	6,371	59	15,089		16,295	31,384		44	830	32,160
2. East Wellington No. 1.	46,695	1,866		48,561		7,309	55,810		5,100	3,023	53,733
3. Wellington Extension Mine, Lady-smith	97,057	27,598	12,551	137,206		14,688	151,894	29,197	4,737	10,653	187,007
4. Cumox Mines, Cumberland.	172,225	2	10,595	182,822	20,115	12,491	218,397	84,706	19,180	8,220	292,143
5. South Wellington Mines.	78,026	25,38		103,404		20,794	121,878	23,563	2,434	2,154	144,061
6. Michel.	41,028	105,312		146,340	145,039	20,479	312,758		1,312	52	311,496
Coal Creek.	47,154	247,465		294,619	238,771	42,317	575,987		2,714	59	573,332
6. Corbin.	3,685	55,040		58,725		5,264	64,344		300	303	62,544
7. Middlesboro.	48,720			48,720		2,474	38,004				54,987
8. Inland.	32,530			32,530		2,474	38,004				35,004
9. Princeton.	6,054	5,293		11,347		4,398	15,744	1,635		34	17,414
10. Miscellaneous	1,123			1,123			1,123				1,123
	739,881	705,779	25,668	1,471,328	404,825	189,460	2,065,613	138,901	43,520	37,361	2,198,355

1. Western Fuel Company.  
 2. Vancouver-Nanaimo Coal Mining Co.  
 3. Canadian Collieries (Dunsmuir), Ltd.  
 4. Pacific Coast Coal Mines, Ltd.  
 5. Crow's Nest Pass Coal Co., Ltd.  
 6. Corbin Coal and Coke Co., Ltd.  
 7. Middlesboro Collieries, Ltd.  
 8. Inland Coal and Coke Co., Ltd.  
 9. Princeton Coal and Land Co., Ltd.  
 10. Pacific Coast Colliery of B.C.

## Annual Production of Coal in British Columbia.

Calendar Year.	Output.	Home consumption.	Sold for export.	PRODUCTION*.		Price per long ton.	Value.
				Long tons.	Short tons.		
1836 to 1873	480,785				538,480	\$4.00	\$ 1,923,140
1874.....	81,547	25,023	56,038	81,061	90,788	3.00	243,183
1875.....	110,145	31,252	66,392	97,644	109,361	3.00	292,932
1876.....	139,192	17,856	122,329	140,185	157,007	3.00	420,555
1877.....	154,052	24,311	115,381	139,692	156,455	3.00	419,076
1878.....	170,846	26,166	164,682	190,848	213,750	3.00	572,544
1879.....	241,301	40,294	192,096	232,390	260,277	3.00	697,170
1880.....	267,595	46,513	225,849	272,362	305,045	3.00	817,086
1881.....	228,357	40,191	189,323	229,514	257,056	3.00	688,542
1882.....	282,139	56,161	232,411	288,572	323,201	3.00	865,716
1883.....	213,299	64,786	149,567	214,353	240,075	3.00	643,059
1884.....	394,070	87,388	306,478	393,866	441,130	3.00	1,181,598
1885.....	365,596	95,227	237,797	333,024	372,987	3.00	999,072
1886.....	326,636	85,987	249,205	335,192	375,415	3.00	1,005,576
1887.....	413,360	99,216	334,839	434,055	486,142	3.00	1,302,165
1888.....	489,301	115,953	365,714	481,667	539,467	3.00	1,445,001
1889.....	579,830	124,574	443,675	568,249	636,439	3.00	1,704,747
1890.....	678,140	177,075	508,270	685,345	767,586	3.00	2,056,035
1891.....	1,029,097	202,697	806,479	1,009,176	1,130,277	3.00	3,027,528
1892.....	826,335	196,223	640,579	836,802	937,218	3.00	2,510,406
1893.....	978,294	207,851	768,917	976,768	1,093,980	3.00	2,930,304
1894.....	1,012,953	165,776	827,642	993,418	1,112,628	3.00	2,980,254
1895.....	939,654	188,349	756,334	944,683	1,058,045	3.00	2,834,049
1896.....	894,882	261,984	634,238	896,222	1,003,769	3.00	2,688,666
1897.....	802,296	290,310	619,860	910,170	1,019,390	3.00	2,730,510
1898.....	1,136,485	375,423	752,863	1,128,286	1,263,680	3.00	3,384,858
1899.....	1,306,324	526,058	751,711	1,277,769	1,431,101	3.00	3,833,307
1900.....	1,590,178	685,667	914,184	1,599,851	1,791,833	3.00	4,799,553
1901.....	1,691,557	799,666	914,163	1,713,829	1,919,488	3.00	5,141,487
1902.....	1,641,626	837,871	776,809	1,614,680	1,808,441	3.00	4,844,040
1903.....	1,450,663	947,499	549,449	1,496,948	1,676,581	3.00	4,490,844
1904.....	1,685,698	1,129,465	533,593	1,663,058	1,862,625	3.00	4,989,174
1905.....	1,736,696	1,089,667	647,343	1,737,010	1,945,452	3.00	5,211,030
1906.....	1,899,076	1,236,476	679,829	1,916,305	2,146,262	3.00	5,748,915
1907.....	2,219,602	1,438,402	673,114	2,111,516	2,364,898	3.50	7,390,306
1908.....	2,111,931	1,486,511	597,157	2,083,668	2,333,708	3.50	7,292,838
1909.....	2,388,196	1,585,232	741,667	2,326,899	2,606,127	3.50	8,144,147
1910.....	3,152,207	1,798,873	1,175,007	2,973,880	3,330,745	3.50	10,408,580
1911.....	2,304,794	1,657,422	612,696	2,270,118	2,542,532	3.50	7,945,413
1912.....	2,857,345	1,898,213	966,963	2,865,176	3,208,997	3.50	10,028,116
1913.....	2,587,357	1,799,643	623,946	2,423,589	2,714,420	3.50	8,482,562
1914.....	2,182,164	1,397,036	602,785	1,999,821	2,239,799	3.50	6,999,374
1915.....	1,962,817	1,191,219	653,078	1,844,297	2,065,613	3.50	6,455,041
1916.....	2,487,012	1,463,152	844,045	2,307,197	2,584,061	3.50	8,075,190
Total.....				49,519,938	55,462,331		160,643,689

\*This production is obtained by adding "Home Consumption" and "Sold for Export."

†52,935 tons of this amount were exported as sales without the division into "Home Consumption" and "Sold for Export."

## Yukon.

Coal production in the Yukon in 1916 was reported as 3,300 tons, all the product of the Tantalus mine of the Five Fingers Coal Company, near White Horse.

The colliery of the Northern Light, Power and Coal Company on Coal Creek was idle throughout the year.

### Annual Production of Coal in Yukon Territory.

Calendar Year.	Short tons.	Value.	Average per ton.
1901.....	*5,864	\$ 86,230	\$ 14.70
1902.....	4,910	37,280	7.59
1903.....	1,849	29,584	16.00
1904.....			
1905.....	7,000	21,000	3.00
1906.....	7,000	28,000	4.00
1907.....	15,000	60,000	4.00
1908.....	3,847	21,158	5.50
1909.....	7,364	49,502	6.72
1910.....	16,185	110,925	6.83
1911.....	2,840	12,780	4.50
1912.....	9,245	44,958	4.86
1913.....	19,722	95,945	4.86
1914.....	13,443	53,760	4.00
1915.....	9,724	38,896	4.00
1916.....	3,300	13,200	4.00
Total.....	127,293	703,218	

\*Part of this production was mined in 1900.

## COKE.

The accompanying statistics cover only the production of coke in by-product and Beehive coke oven plants and do not include retort coke recovered by gas companies.

Both domestic and imported coal are used in the manufacture of coke in Canadian coke oven plants.

In 1916, 1,501,835 tons of domestic, and 633,076 tons of imported coal were charged to coke ovens from which was obtained an output of 1,448,782 tons of coke, thus averaging 0.679 tons of coke per ton of coal charged. Coke from by-product ovens comprised 69 per cent of the total.

In 1915, 1,425,172 tons of domestic and 431,221 tons of imported coal were charged to coke ovens from which was obtained an output of 1,200,766 tons of coke, thus averaging 0.647 tons of coke per ton of coal charged. Coke from by-product ovens comprised 66 per cent of the total.

In 1914, 1,038,235 tons of domestic, and 503,312 tons of imported coal were used to produce an output of 1,015,253 tons of coke, showing a return of 0.658 tons of coke per ton of coal charged. Coke from by-product ovens comprised 67 per cent of the total.

The amount of coke sold or used by coke producers in 1916 was 1,469,741 tons as compared with 1,170,473 tons in 1915, an increase of 299,268 tons or over 25 per cent.

In addition to the tonnage sold or used by producers there was imported during 1916, 757,116 tons of coke, while the exports totalled 48,539 tons. The Canadian consumption for 1916 was therefore 2,178,318 tons, an increase of 405,857 tons or nearly 23 per cent over the consumption in 1915. The consumption of oven coke during recent years, has been as follows: 1,285,228 tons in 1908; 1,449,369 tons in 1909; 1,581,832 tons in 1910; 1,677,188 tons in 1911; 1,981,832 tons in 1912; 2,186,170 tons in 1913; 1,509,068 tons in 1914, and 1,772,461 tons in 1915.

## Coke Production, 1916.

(IN SHORT TONS.)

Province.	Coal charged to ovens.	Coke output.	STOCK ON HAND.		Coke sold or used.	Per cent of total production.	Value of coke sold or used.
			Jan. 1.	Dec. 31.			
Nova Scotia.....	985,063	653,836	1,711	1,114	654,433	44.53	\$2,617,732
Ontario.....	(a) 633,076	452,502	33,913	13,908	472,507	32.15	2,008,155
Alberta.....	67,106	42,548	361	959	41,950	2.85	167,800
British Columbia.....	449,666	299,896	2,949	1,994	300,851	20.47	1,255,725
Total.....	2,134,911	1,448,782	38,934	17,975	1,469,741	100.00	\$6,049,412

(a) All imported coal.



### Coke Production, 1915.

(IN SHORT TONS.)

Province.	Coal charged to ovens.	Coke output.	STOCK ON HAND.		Coke sold or used.	Per cent of total production.	Value of coke sold or used.
			Jan. 1.	Dec. 31.			
Nova Scotia.....	981,369	584,993	2,621	1,741	585,873	50.05	\$1,905,766
Ontario.....	(a) 431,221	316,211	2,953	33,913	285,251	24.37	1,141,004
Alberta.....	38,878	24,187	.....	361	23,826	2.04	95,304
British Columbia.....	404,925	275,375	3,097	2,949	275,523	23.54	1,116,506
Total.....	1,856,393	1,200,766	8,671	38,964	1,170,473	100.00	\$4,258,580

(a) All imported coal.

### Distribution of Coke Production, 1916.

(IN SHORT TONS.)

	Nova Scotia.	Ontario.	Alberta.	British Columb.	Total.
Sold in Canada.....	1,821	51,075	41,940	262,299	\$ 357,135
Sold for export.....	.....	.....	.....	38,503	38,503
Total sales.....	1,821	51,075	41,940	300,802	395,638
Used by maker in blast furnace or otherwise.....	652,612	421,432	10	49	1,074,103
Total sold or used.....	654,433	472,507	41,950	300,851	1,469,741
Number of ovens in operation December 31.....	697	104	120	986	1,907
Number of ovens idle December 31.....	109	.....	247	294	650

### Annual Production of Coke.

Calendar Year.	Short tons.	Value.	Average per ton.	Calendar Year.	Short tons.	Value.	Average per ton.
1886.....	35,396	\$ 101,940	\$ 2.88	1901.....	365,531	\$1,228,225	\$ 3.36
1887.....	40,428	135,951	3.36	1902.....	502,043	1,519,185	3.03
1888.....	45,373	134,181	2.96	1903.....	561,318	1,734,404	3.09
1889.....	54,539	155,043	2.84	1904.....	554,083	2,032,048	3.66
1890.....	56,450	166,298	2.95	1905.....	700,488	2,436,211	3.48
1891.....	57,084	175,592	3.08	1906.....	782,055	2,863,503	3.66
1892.....	56,135	160,249	2.85	1907.....	842,003	3,583,468	4.26
1893.....	61,078	161,790	2.65	1908.....	858,257	3,449,361	4.02
1894.....	58,044	148,551	2.56	1909.....	862,011	3,484,393	4.04
1895.....	53,356	143,047	2.68	1910.....	902,715	3,462,872	3.84
1896.....	49,619	110,257	2.22	1911.....	935,651	3,630,410	3.88
1897.....	60,686	176,457	2.91	1912.....	1,411,229	5,164,331	3.66
1898.....	87,600	286,000	3.26	1913.....	1,530,499	5,919,596	3.87
1899.....	100,820	350,022	3.47	1914.....	1,023,860	3,658,514	3.55
1900.....	157,134	649,140	4.13	1915.....	1,170,473	4,258,580	3.64
				1916.....	1,469,741	6,049,412	4.12

## Annual Production of Coke by Provinces.

Calendar Year.	NOVA SCOTIA.		ONTARIO.		ALBERTA.		BRITISH COLUMBIA.	
	Short tons.	Value.	Short tons.	Value.	Short tons.	Value.	Short tons.	Value.
1897.....	41,532	\$ 90,950					19,154	\$ 85,507
1898.....	48,400	111,000					39,200	175,000
1899.....	62,459	178,767					38,361	171,253
1900.....	61,767	223,395					95,367	425,745
1901.....	222,694	590,560					142,837	637,665
1902.....	363,330	899,930					138,713	619,255
1903.....	371,745	888,094					189,753	846,310
1904.....	275,927	808,022			20,984	\$ 78,936	257,172	1,148,090
1905.....	386,366	1,054,712			44,866	179,464	269,256	1,202,035
1906.....	476,364	1,540,976			69,486	268,042	236,205	1,054,485
1907.....	524,110	1,688,070			76,321	297,595	241,572	1,049,432
1908.....	505,929	1,658,151			75,645	309,019	276,683	1,482,191
1909.....	492,992	1,608,092			87,233	366,734	281,786	1,509,567
1910.....	508,058	1,655,775	24,685	\$ 148,110	121,578	486,312	248,394	1,172,675
1911.....	557,534	1,814,977	259,554	1,318,303	36,216	146,251	82,327	350,879
1912.....	625,918	1,840,129	379,854	1,709,343	105,684	424,027	299,773	1,190,832
1913.....	722,038	2,352,153	419,287	1,991,613	67,403	269,612	321,771	1,306,218
1914.....	343,289	1,118,614	386,314	1,352,099	29,059	116,236	265,198	1,071,565
1915.....	585,873	1,905,766	285,251	1,141,004	23,826	95,304	275,523	1,116,562
1916.....	654,433	2,617,732	472,507	2,008,153	41,950	167,800	300,851	1,255,750

## Annual Exports of Coke.

Calendar Year.	Short tons.	Value.	Calendar Year.	Short tons.	Value.
1897.....	2,987	\$ 6,078	1907.....	70,617	\$ 320,357
1898.....	3,774	8,394	1908.....	58,708	248,759
1899.....	5,557	18,726	1909.....	74,067	329,051
1900.....	41,529	131,278	1910.....	57,971	250,715
1901.....	57,505	176,990	1911.....	9,852	39,823
1902.....	62,568	180,920	1912.....	57,744	252,763
1903.....	32,608	135,957	1913.....	68,235	308,410
1904.....	102,463	345,031	1914.....	67,838	306,117
1905.....	116,071	509,908	1915.....	35,869	160,053
1906.....	37,003	168,571	1916.....	48,539	221,334

## Annual Imports of Oven Coke.

Fiscal Year.	Short tons.	Value.	Fiscal Year.	Short tons.	Value.
1880.....	3,837	\$ 19,353	1899.....	141,284	\$ 362,826
1881.....	5,492	26,123	1900.....	178,878	506,839
1882.....	8,157	36,670	1901.....	308,786	680,138
1883.....	8,943	38,588	1902.....	267,142	842,815
1884.....	11,207	44,518	1903.....	256,723	1,222,756
1885.....	11,564	41,391	1904.....	221,050	765,123
1886.....	11,858	39,756	1905.....	371,593	807,842
1887.....	15,110	56,222	1906.....	480,222	1,311,375
1888.....	25,487	102,334			
1889.....	29,557	91,902	Calendar Year.		
1890.....	36,564	133,344	1907.....	624,649	2,206,084
1891.....	38,533	177,605	1908.....	426,971	1,135,125
1892.....	43,499	194,429	1909.....	661,425	1,508,627
1893.....	41,821	156,277	1910.....	737,088	1,908,725
1894.....	42,864	176,996	1911.....	1,843,248	
1895.....	43,235	149,434	1912.....	628,174	1,702,856
1896.....	61,612	203,826	1913.....	723,906	2,180,830
1897.....	83,330	267,540	1914.....	553,046	1,585,259
1898.....	135,060	347,040	1915.....	637,857	1,608,464
			1916.....	757,116	2,229,078

†Duty free.

In Nova Scotia coke was made at Sydney, and Sydney Mines, the ovens at Westville being idle throughout the year.

In Ontario the production came from the Algoma Steel Corporation's plant at Sault Ste. Marie.

In Alberta the plants at Lille and Passburg were idle, while one plant at Coleman was in operation part of the year.

In British Columbia coke was made by the Crow's Nest Pass Coal Company at Fernie and Michel, and by the Canadian Collieries (Dunsmuir) Limited at Union Bay.

The coke production of the eastern provinces is used almost entirely in the iron and steel industry, while that of the western provinces is used chiefly by the copper and lead smelters, finding a market in the United States as well as in Canada.

In Nova Scotia at the close of 1916 there were 697 ovens in operation, and 109 idle. The ovens formerly operated at Stellarton (45) and Londonderry (97) are not included amongst those idle, being regarded as abandoned. The Dominion Iron and Steel Company had 547 of its 620 ovens in operation. All these ovens are of the Otto-Hoffman by-product type, from which are recovered tar, sulphate of ammonia, and gas. The gas is used in the company's steel plant operations, and the sulphate of ammonia in the crystallized state is disposed of to the trade. The crude tar is sold to the Dominion Tar and Chemical Company, who have a plant close at hand for the separation of a variety of coal-tar products. All the ovens of the Nova Scotia Steel and Coal Company were in operation at the close of the year. The surplus gas from the Bauer ovens is used for the production of steam for the power generating plant.

In Ontario the Algoma Steel Company's Koppers Regenerative By-Product ovens, at Sault Ste. Marie reported now as numbering 104 in place of 110, as formerly, were in operation most of the year, none being idle on December 31. At the Sault Ste. Marie plant, crude tar, crystallized sulphate of ammonia, and gas are recovered. Benzol, toluol, and other hydro-carbons were recovered by the Toronto Chemical Company, a branch of the Dominion Tar and Chemical Co. The latter company also takes the tar, which is treated for the separation of coal-tar products.

In Alberta, all of the Western Canadian Collieries' 50 Bernard ovens at Lille, all of the Leitch Collieries' 101 Mitchell rectangular ovens at Passburg, and some of the International Coal and Coke Company's 216 Beehive ovens at Coleman, were idle throughout the year. The latter company had 120 ovens in operation on December 31.

In British Columbia at the end of the year the Crow's Nest Pass Coal Company had only 24 of its 454 Beehive ovens, at Fernie, idle, and 30 of its 486 at Michel, idle; its 240 Beehive ovens at Carbonade have been idle for some years and are now regarded as permanently abandoned. The 240 Beehive ovens at Hosmer were idle throughout the year. On

Vancouver island the Canadian Collieries (Dunsmuir), Limited, in 1915 rebuilt and placed in operation 100 ovens at Union Bay, and all were in operation at the end of 1916.

The exports of coke in 1915, as per Customs record, were 48,539 tons, principally from British Columbia, as against exports in 1915 of 35,869 tons.

#### Coke Oven By-Products.

Coke oven by-products were recovered at Sydney, N.S., and Sault Ste. Marie, Ont. The 1916 recoveries included 9,012,202 gallons of tar; 11,043 tons of sulphate of ammonia, together with important quantities of benzol, toluol, and solvent naphthas. In 1915 the recoveries were 7,365,911 gallons of tar, and 10,448 tons of sulphate of ammonia.

#### Annual Production of Coke Oven By-Products.

Year	Tar.		Year.	Sulphate of ammonia.	
	Gallons.	Short tons.		Gallons.	Short tons.
1901.....	2,662,612	1,614	1909.....	4,016,824	3,416
1902.....	4,094,135	2,393	1910.....	3,963,591	3,491
1903.....	3,281,249	3,207	1911.....	6,464,155	7,124
1904.....	1,649,197	1,773	1912.....	8,428,896	11,242
1905.....	3,407,784	2,500	1913.....	8,371,600	10,693
1906.....	3,725,723	2,364	1914.....	5,714,472	8,572
1907.....	4,424,615	1,734	1915.....	7,365,911	10,448
1908.....	4,450,166	3,312	1916.....	9,012,202	11,043

The imports of sulphate of ammonia in 1916 are reported as 293,096 pounds valued at \$9,672, as against imports in 1915 of 503,158 pounds, valued at \$14,637, and in 1914, of 763,597 pounds valued at \$21,335.

Exports of sulphate of ammonia are not separately recorded.

