

ON 2857

none

Dept of Correctional Services,

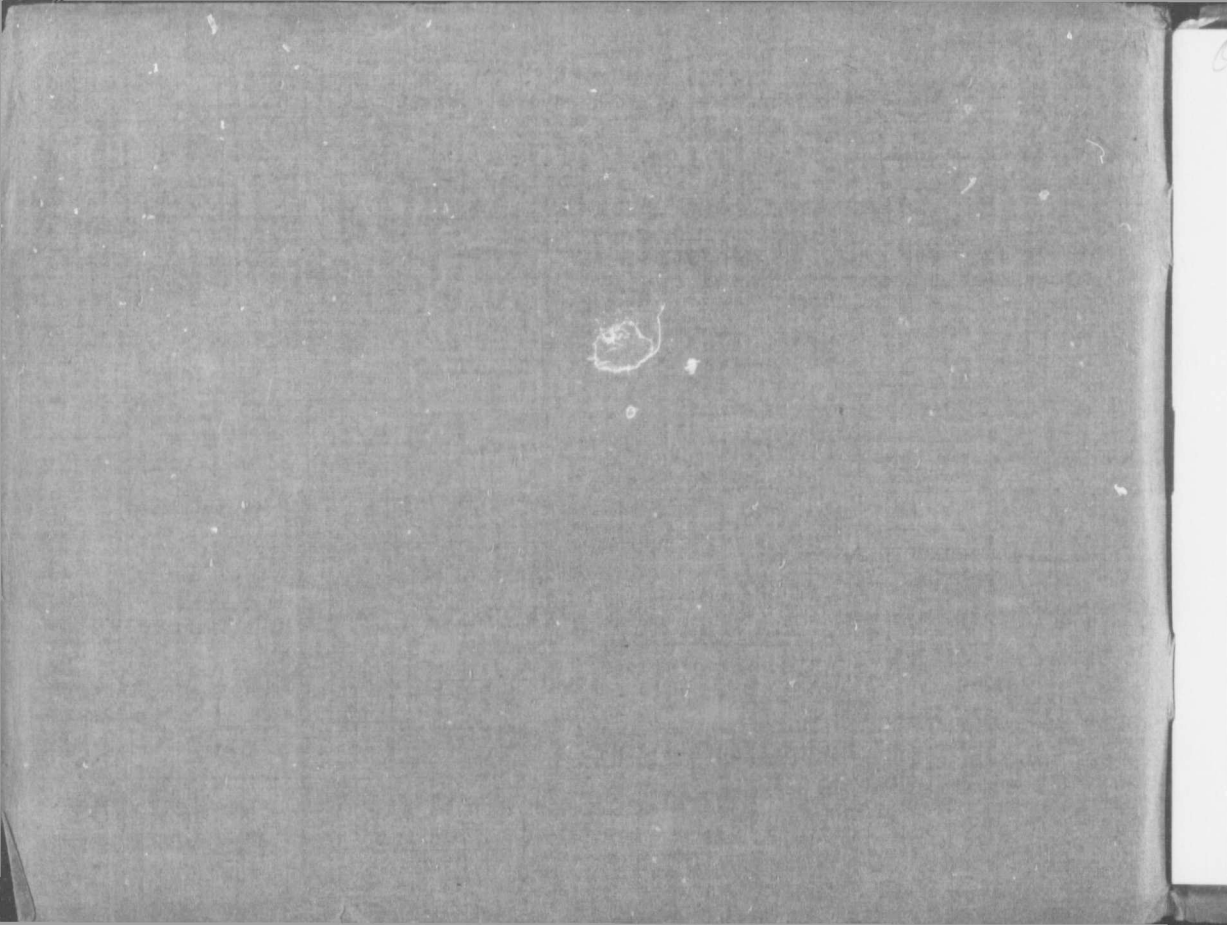
1711
mact 207

^{3/}CENTRAL PRISON FARM

GUELPH . . . ONTARIO



Corner stone of Administration Building laid by
The Honorable Sir James Pliny Whitney, Prime
Minister of Ontario, the 25th day of September, 1911.

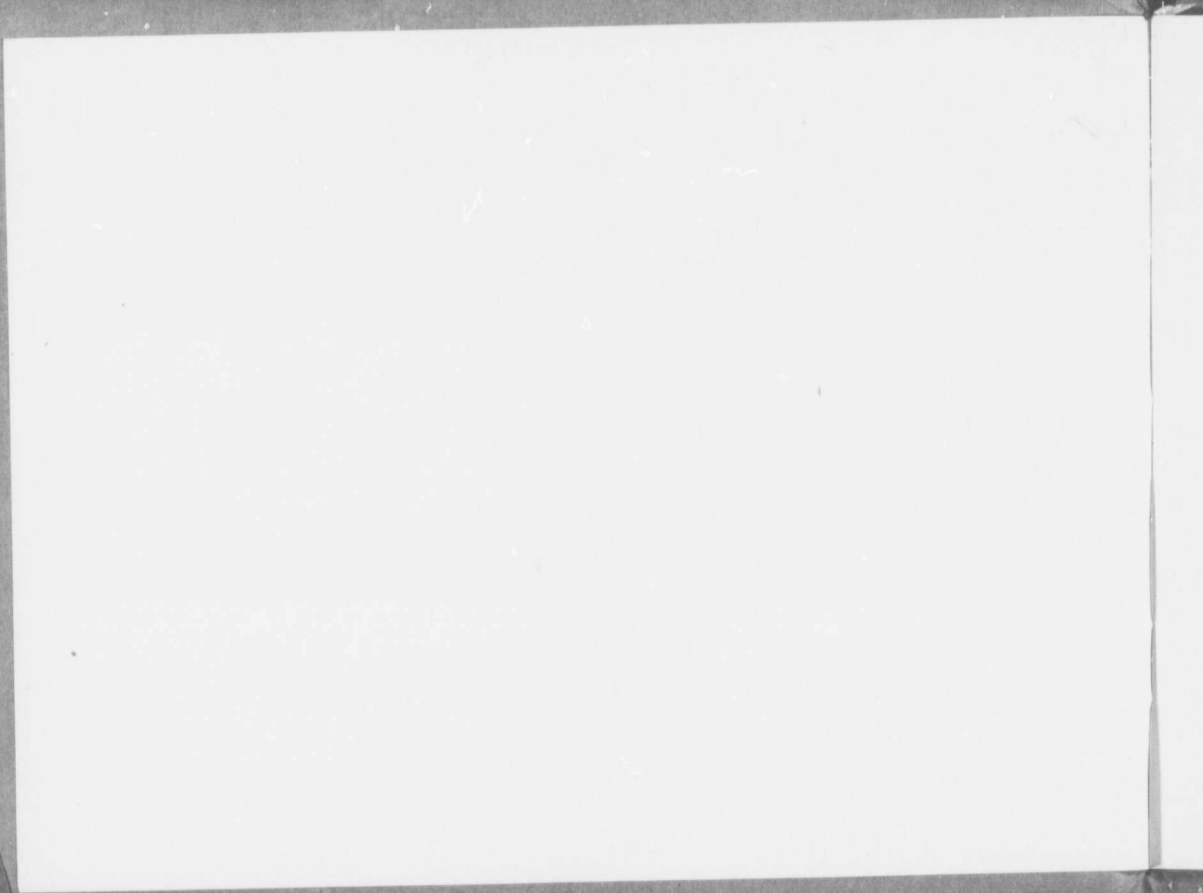


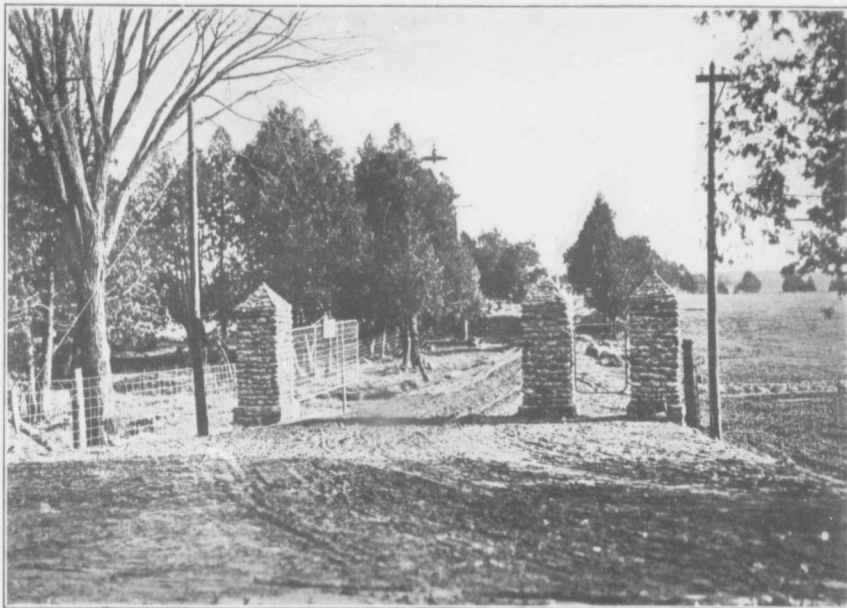
*Ontario: Inspector of prisons and public charities,
Central Prison Farm, Guelph, Ontario. [1911] [35] p. 1102. (McC. p. 257)*



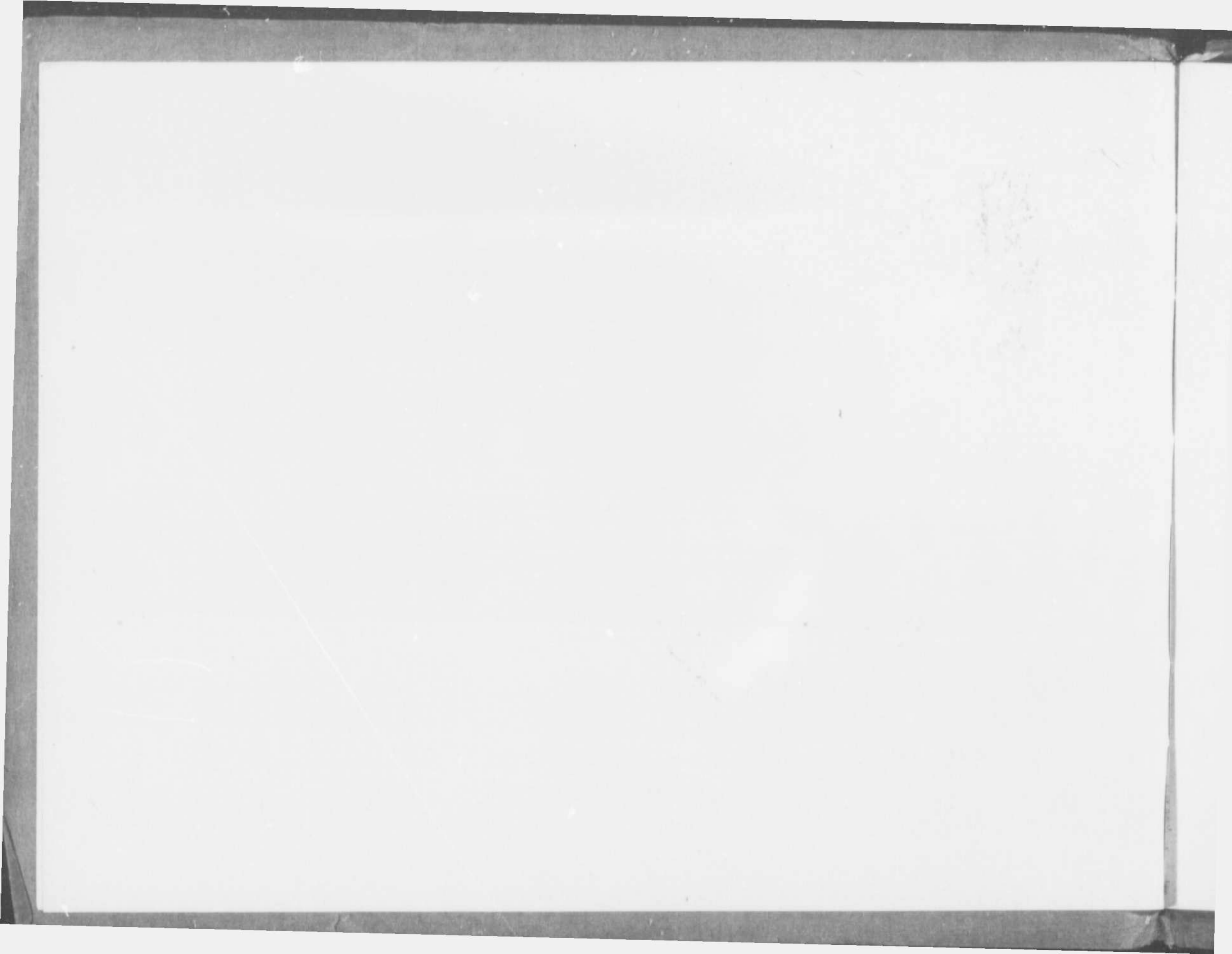
CENTRAL PRISON FARM
GUELPH - ONTARIO

Corner stone of Administration Building
laid by The Honorable Sir James Pliny
Whitney, Prime Minister of Ontario, the
25th day of September, 1911.





Present entrance to Central Prison Farm.



Location

THE CENTRAL PRISON FARM, consisting of about eight hundred and thirty acres, is situated in the Township of Guelph, in the County of Wellington, about two miles east of the City of Guelph. The property, which is capable of magnificent development, is traversed from South to North by the River Speed and its beautiful valley. The Railway facilities are excellent, the Canadian Pacific Railway passing right through the Farm, and paralleling the River, while the Grand Trunk Railway passes immediately to the North. After an exhaustive examination of a number of properties in different parts of the Province, the

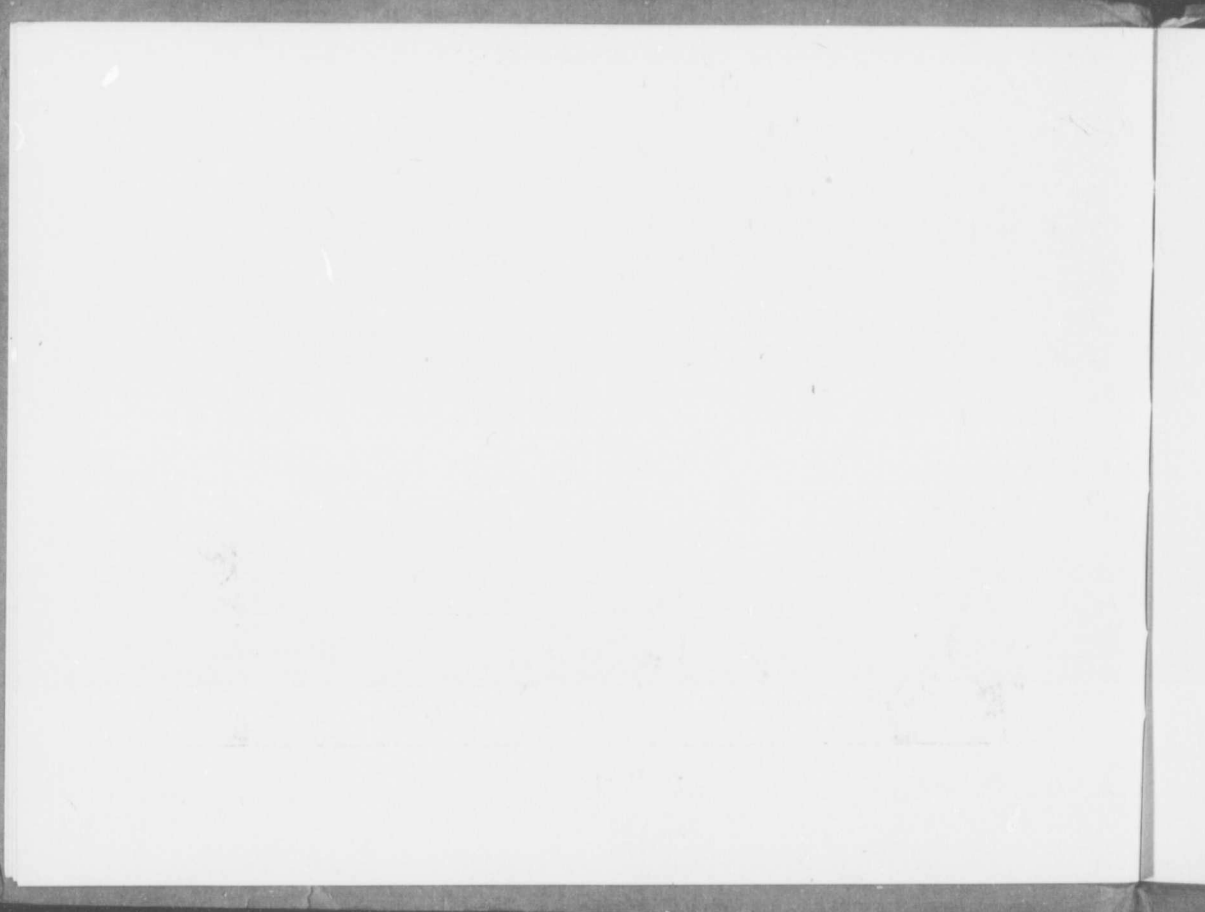
purchase of the present site was directed by Order-in-Council, approved by His Honour the Lieutenant-Governor on the 21st of December, 1909.

In selecting a site most adaptable for a Prison Farm, there were many qualifications which were requisite, namely: good agricultural land; an inexhaustible supply of stone suitable for road and building construction; sand and gravel for building purposes; proximity to the centre of population, so as to minimize as far as possible the cost of transporting prisoners; convenient railway facilities; and a building site which would have good drainage and a plenti-

Qualifications
for a
Prison Site



Temporary Quarters.



The Initial
Stages

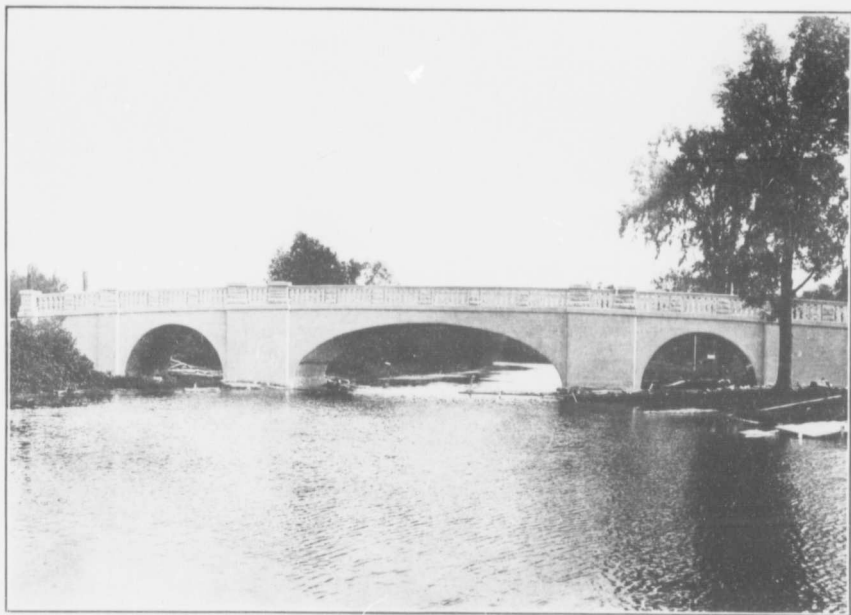
ful supply of pure water. While these essentials present a difficult combination, the location selected possesses all the necessary qualifications for an ideal Prison Farm.

Possession was taken in April, 1910, when fourteen prisoners and two officers were quartered in one of the farm-houses. As the former owners of the farms moved out and more farm-houses were available, the number of prisoners was increased to fifty. General farm work and land improvement were vigorously carried on, roads were made, swamp-land was drained, and tangled morasses were cleared and converted into garden spots. In the latter part of the following

June, the erection of a temporary structure, having accommodation for one hundred and fifty prisoners and a sufficient number of officers, was completed. This structure will be used pending the completion of the permanent building.



Temporary
Quarters



Bridge over the Speed River.



Improvements.

MUCH has already been done in the way of economic improvement and development of the property. To connect the Farm on either side of the River Speed, and as part of the scheme of permanent roadways, a reinforced concrete bridge, designed by the Provincial Engineer of Highways, has been erected by Prison labor. This bridge is one hundred and sixty feet in length and has three arches, a centre one of fifty feet and one of twenty feet on each end. The approaches to the bridge, measuring approximately twelve hundred feet, have been filled in with refuse from the quarries, which was transported by the Farm Railway in dump cars and dumped from a temporary wooden trestle.

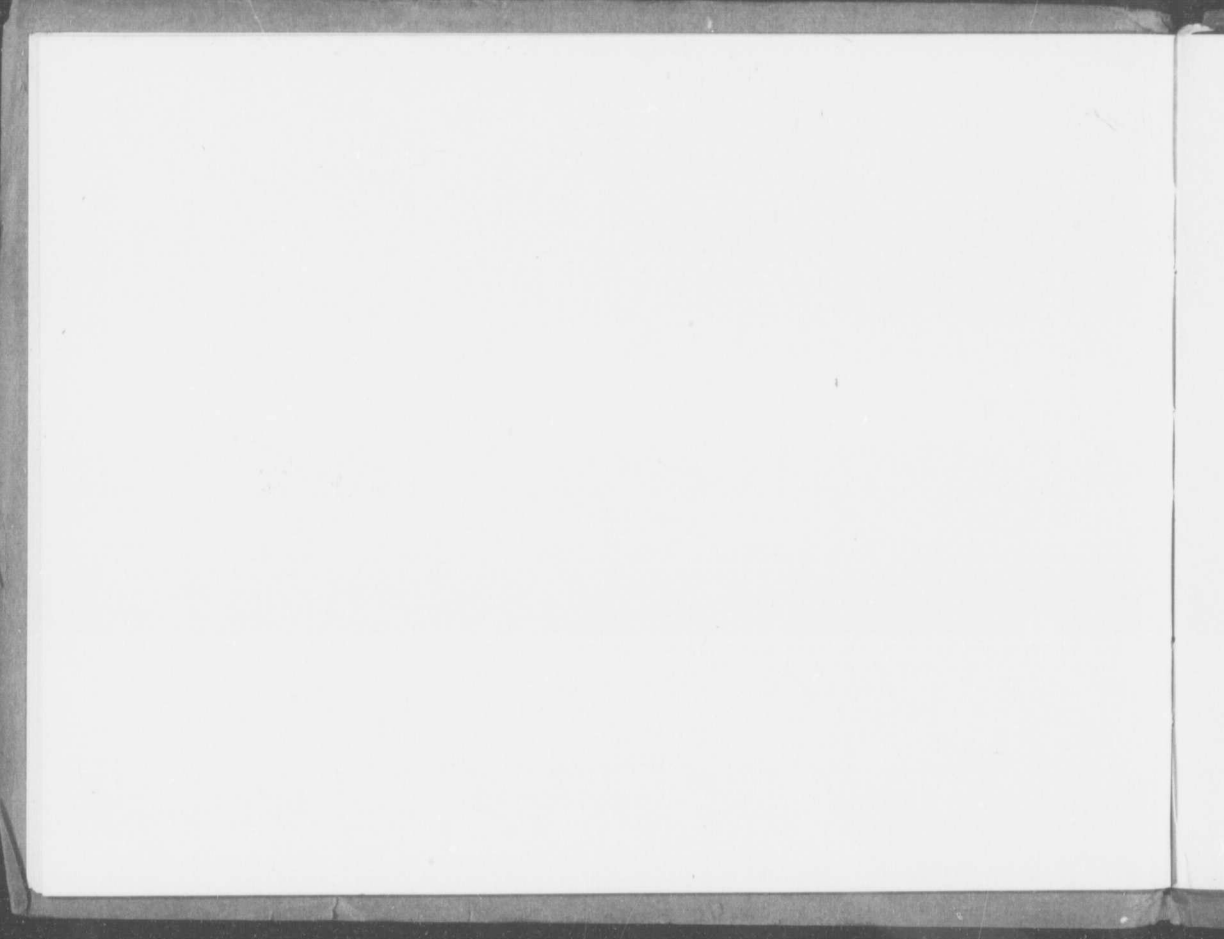
About two and a half miles of telephone line have been built for the purpose of connecting the different parts of the Farm with the Central Office. In addition to this, waterworks have been installed for construction and domestic uses, supplying the purest of spring water from a thirteen thousand gallon concrete reservoir to a ten thousand gallon tank, from which it is distributed by gravity to the different points of consumption.

A narrow-gauge railway about two and a half miles in length is in operation, over which dimension and crushed stone and other building materials are hauled to the different building sites.

Plant and Equipment



The Speed River.



Orchard

An orchard of eighteen hundred apple, cherry, pear and plum trees and fifteen hundred small fruits was planted in the Spring of 1911.

Dairying

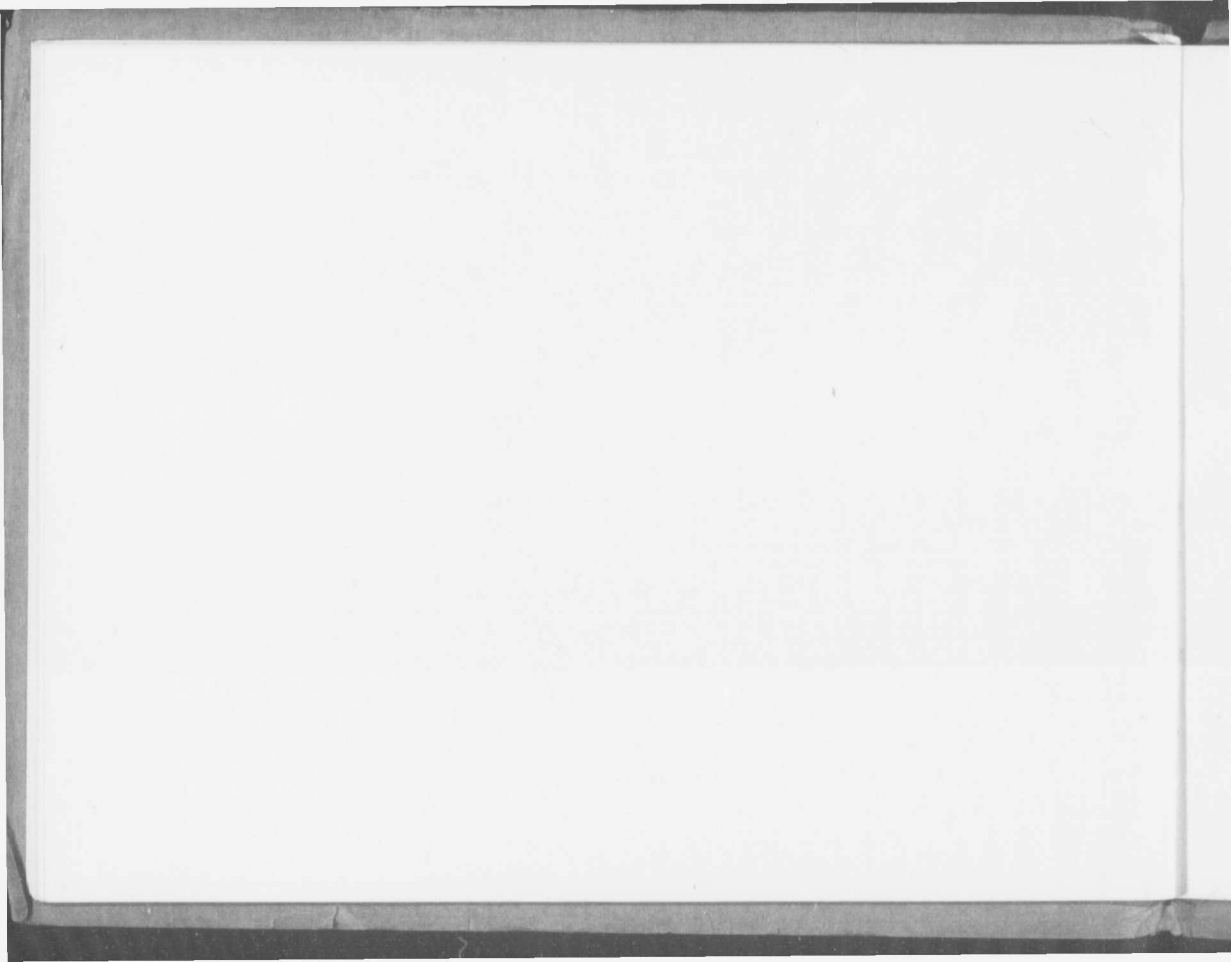
As the Prison Farm has superior agricultural land, good pasture on the low lands, the best of water, plenty of shade, and possibilities second to none for producing hay, fodder and root crops, dairy farming will be made a feature of the work, with profit to the Prison Farm and with advantage to the other Provincial Institutions. The dairy herd now consists of over one hundred and twenty-five Holsteins, and a thoroughly modern dairy barn is in course of erection, which, when completed, will provide accommoda-

tion for eighty milch cows. In designing this stable, special care has been taken to secure one that will be absolutely dry and will have an abundance of fresh air and sunlight.





One of the Holstein Herds.



Industries.

HAVING IN VIEW THE UTILIZATION to the best advantage of the natural resources of the Farm, and in order to construct the permanent buildings in the most economic and efficient manner, a number of industries have been established, a brief description of each being given below:—

Quarries.

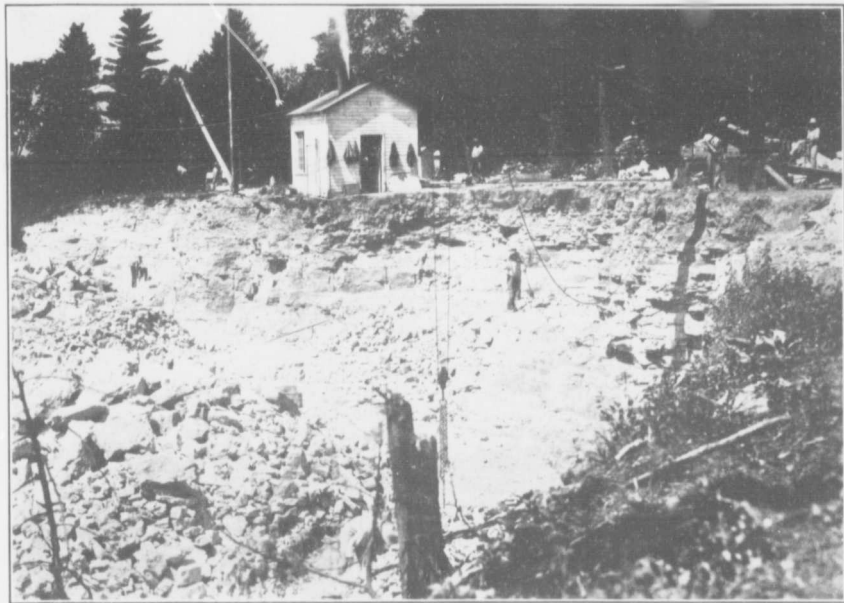
There is an abundance of dolomitic limestone rock in high cliffs on both sides of the River Speed, which is of superior quality and suitable for building purposes, lime manufacture and road-making. Two quarries have been opened up, from which all stone used in construction, lime manufacture and stone-crushing is quarried.

A STONE CRUSHER, having a daily capacity of four hundred tons, has been installed, the product is screened to two and a half inches, one and a half inches, three-quarters of an inch, one-quarter of an inch and dust, and is used for concrete, road-making and the other industries on the Farm.

Experiments conducted at various Agricultural Experimental Stations throughout the United States and elsewhere have warranted arrangements being made to carry on a number of experiments during the coming year at the farms of the Provincial Hospitals for the Insane, with a view to ascertaining the benefits to be

Stone-Crusher
Plant.

Experimental
Work



One of the Quarries.



Limestone
as a
Fertilizer

Good Roads
Material

derived from the use of ground limestone as a fertilizer. The results of these experiments will be at the disposal of the farmers of Ontario, and ground limestone will be furnished them at a minimum cost.

Shipping facilities will be available next year to permit of crushed stone being supplied in large quantities to the Municipalities of the Province for road-making purposes.



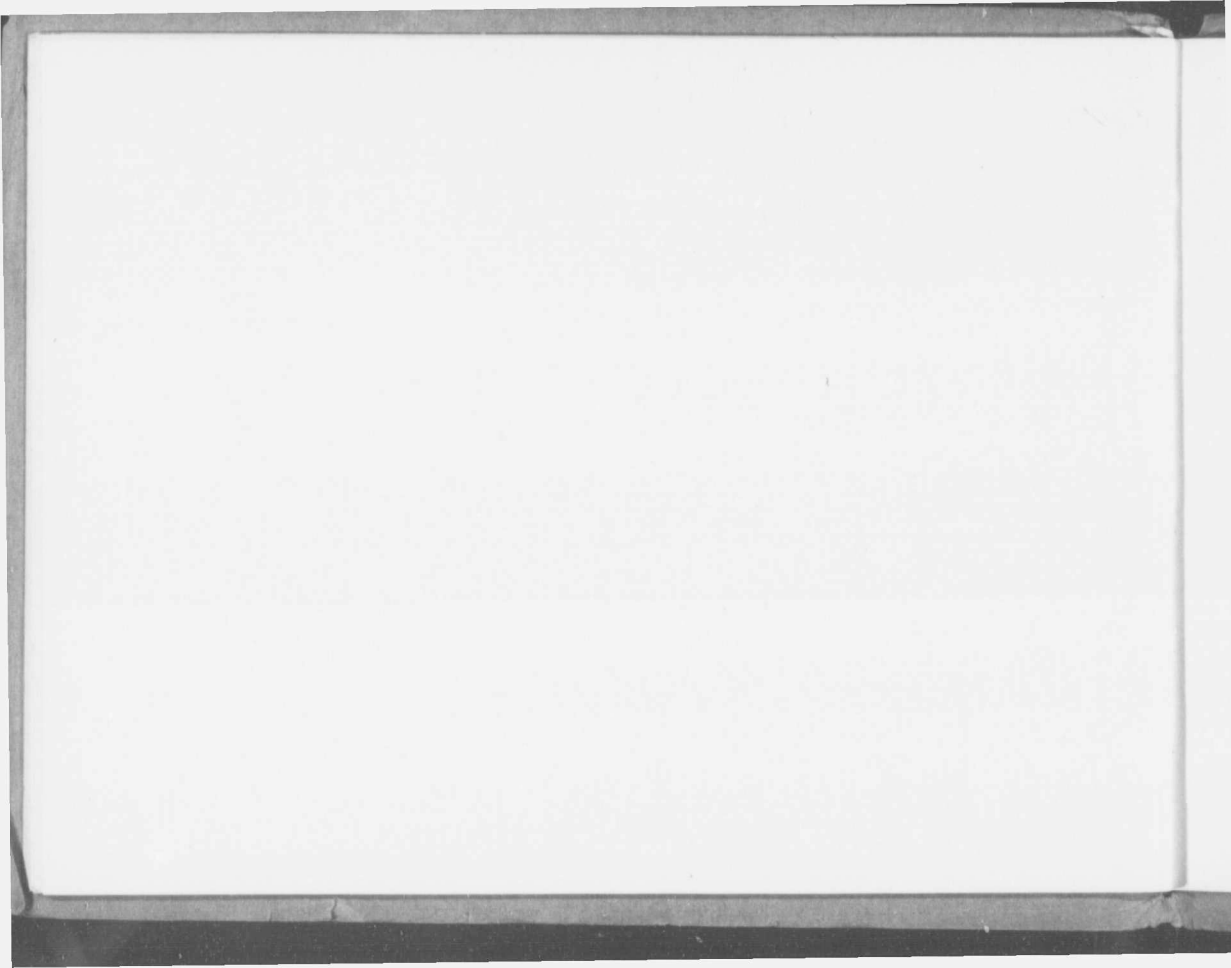
AS AN ENORMOUS QUANTITY OF lime will be used in the construction of the permanent buildings on the Farm, as well as in the construction and repair of all other Provincial buildings, a Lime-Kiln has been erected. In conjunction with this, a thoroughly modern Hydrated Lime Plant is being operated. The advantages of hydrated lime over the ordinary lump lime are many, but the most important of all are, the purity and uniformity of product, complete hydration or "slacking," and the storage of product indefinitely without loss. The lime manufactured is of the best quality, and, being

Lime.

Hydrate



Stone Crusher and Hydrated Lime Plants.



Lime used
in Concrete

high in Magnesia, is unexcelled for building purposes. In all concrete construction on the Farm, ten per cent. of Cement is displaced by ten per cent. of Hydrated Lime.



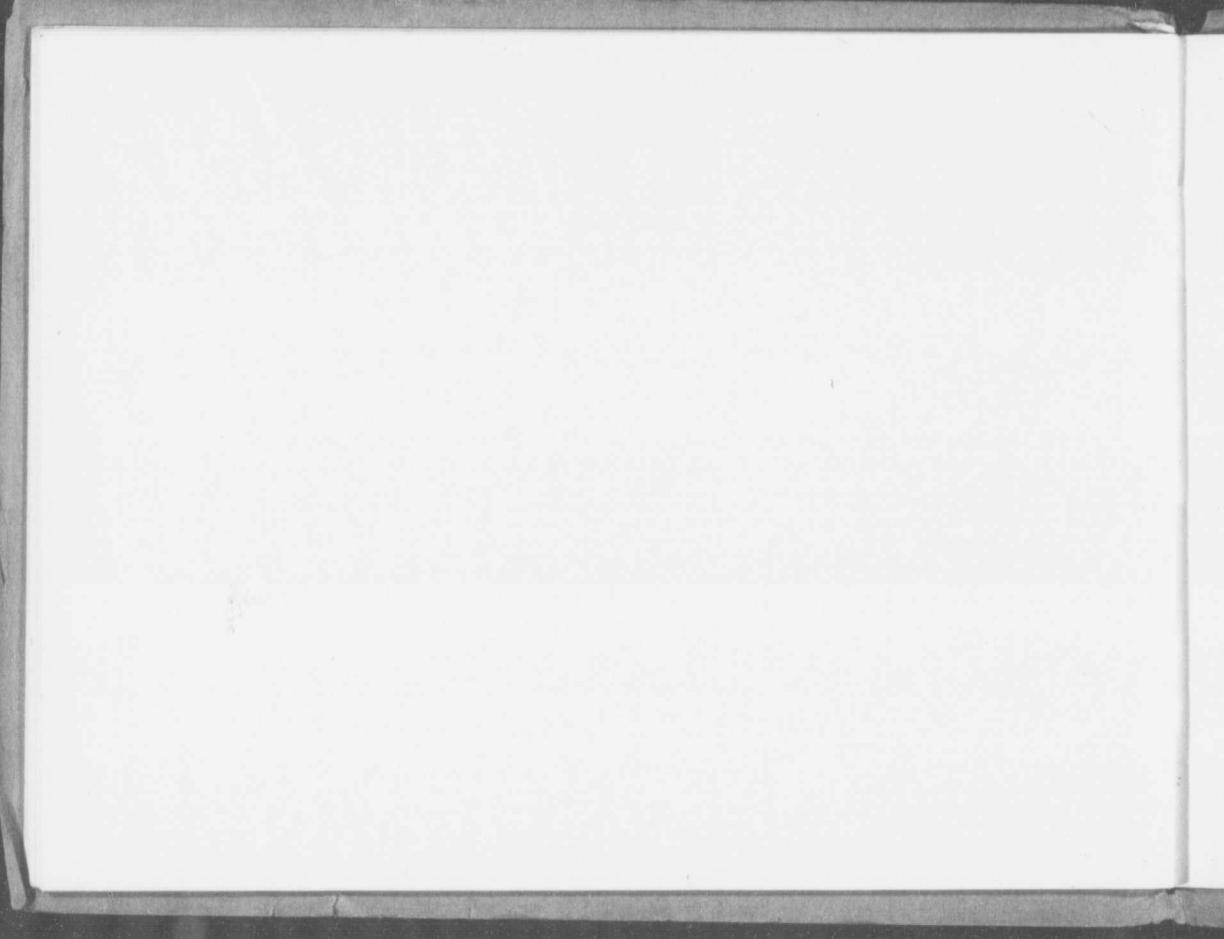
STRUCTURAL TILES OF CONCRETE

are now being manufactured, and with the exception of cement, all materials entering into their manufacture are available on the premises. As many of the buildings to be erected will be of the skeleton type of reinforced concrete with curtain walls of tile, the cost of construction, with tile manufactured on the premises by prison labour, will be reduced to the minimum. As these tiles are hollow, they are non-conductors of heat and cold and are damp-resisting. The walls and buttresses in the first story of the Dairy Stable are constructed entirely of these structural tiles.

Structural
Tile.



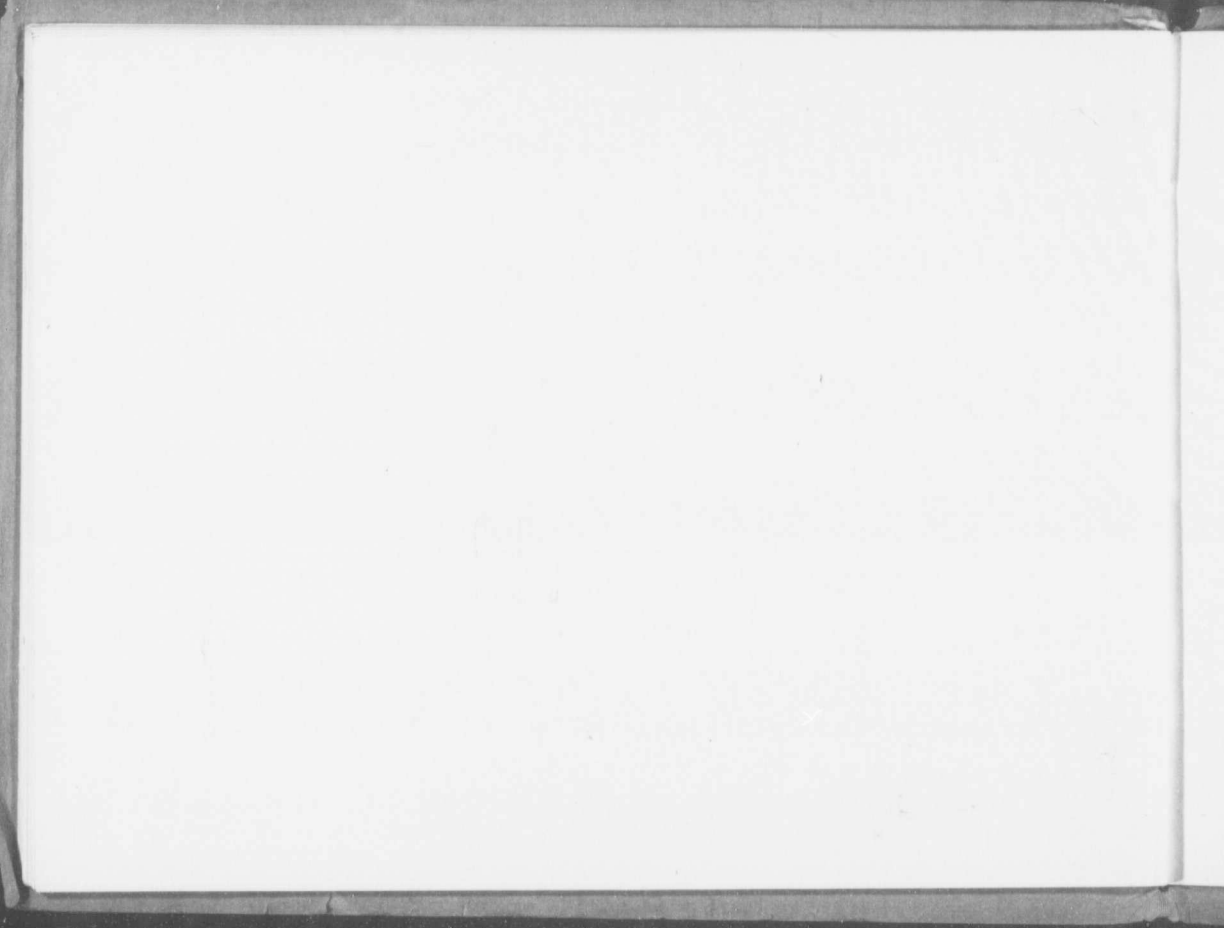
Scene from Orchard.



Possibilities

With the great diversity of work in quarrying, manufacturing, building in all its branches, farming, gardening and dairying, referred to before, it is apparent that there is employment suited to the various inclinations and aptitudes of the complex element that composes the usual prison population.





•BLOCK PLAN•
 SHOWING GENERAL SCHEME
 •THE CENTRAL PRISON FARM•
 GUELPH, ONT.

