

We Want a Modern Residence, 12 rooms, 2 bathrooms, room for side drive, on Avenue Road Hill, will pay up to \$20,000, possession in the spring will do.

The Toronto World

TWELVE PAGES.—MONDAY MORNING DECEMBER 5 1910.—TWELVE PAGES

OFFICES TO RENT Quebec Bank Building, singly or en suite; newly remodelled. H. H. WILLIAMS & CO., 38 King St. East - Toronto, 30TH YEAR.

BOTH SIDES PROFESS TO BE PLEASED WITH THE RESULT OF THE FIRST DAY'S POLLING

Liberals, However, Point Out That Unionist Majority in Birmingham Was Reduced and That They Improved Their Position in the Manufacturing Districts of the Midlands—Bonar Law Defeated in Manchester—Canadians Elected.

Table with 2 columns: Party and Seats. Unionists 62, Liberals 51, Labor 7, Nationalists 5.

POLLING IN SIXTY-SEVEN CONSTITUENCIES TO-DAY

LONDON, Dec. 4.—(Associated Press.)—Although the pollings in the general election Saturday indicate that the next parliament will be similar in complexion to that of the dissolved house, and both sides late to-night professed to be pleased with the result of the first day's contests, a careful analysis of the figures in the political clubs appeared to give greatest satisfaction to the Liberals, who declare themselves more than contented. They point out the fact that every Unionist majority in Birmingham was reduced, and that the Liberals improved their position in Wolverhampton and other Midland districts devoted to manufacturing interests, and under Chamberlain influence.

Result of the First Day's Polling

The outstanding features of the election were the defeat of A. Bonar Law, a Canadian, the chief exponent of tariff reform in N. W. Manchester; the capture of Great Grimsby for the Unionists by Sir George Doughty, and the failure of Hon. Rupert Guinness to win over Haggerston to Unionism. The Canadians elected are: Dr. T. J. MacNamara (L.), Sir Gilbert Parker (C.) and W. M. Aitken (U.). Right Hon. Augustin Birrell, chief secretary for Ireland, and Right Hon. C. E. Hobhouse, financial secretary to the treasury, were among those elected Saturday.

DEFERRED FOR FREE TRADE IS LANCASHIRE VOTING

Lancashire Unionists, nevertheless, appear perfectly satisfied with the progress that has been made to-day in the cause of tariff reform.

ITALIAN AVIATORS KILLED

Two Soldiers Tumble Eighty Feet to Instant Death. ROME, Dec. 4.—An aeroplane carrying an Italian officer and a private fell from a height of 80 feet at the military grounds at Centocello last evening. Both men were killed instantly.

UNIONIST GAINS IN THE COBDENITE COUNTRY A SOURCE OF EXTREME SATISFACTION TO TARIFF REFORMERS.

Lancashire is beginning to shake off its Cobdenite traditions. That is a fair conclusion from the results of to-day's elections. Four free trade seats in the home of the British cotton trade, Ashton, South Salford, Warrington and Wigan, having been captured by the tariff reformers, while the Liberal majorities in most of the other Lancashire constituencies in which a battle was fought to-day have been reduced.

WENDLING SENT DOWN FOR LIFE

LOUISVILLE, Ky., Dec. 4.—Guilty of murder in the first degree with imprisonment for life as punishment was the verdict of the jury to-night in the case of Joseph Wendling, slayer of nine-year-old Anna Keller.

SLASHED THROAT AS HE RAN.

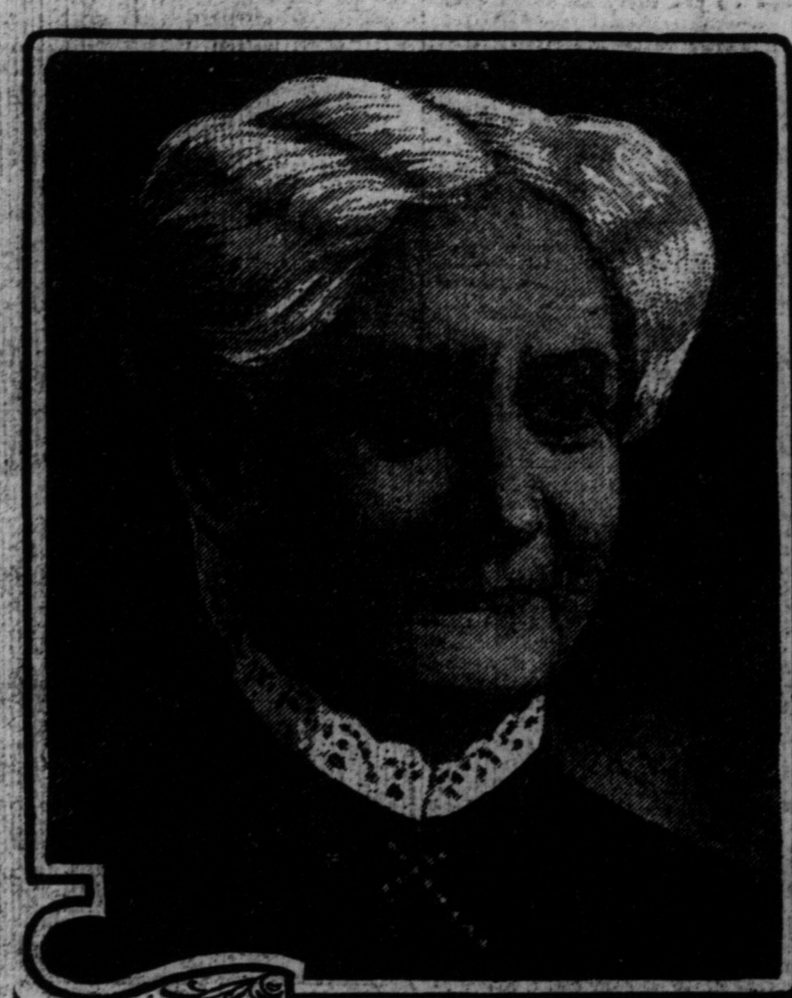
MONTREAL, Dec. 4.—(Special.)—A man named Hudson Adams created consternation Saturday afternoon by running down St. Ursula street and slashing his throat with a razor as he ran. The crazy man was overpowered and taken to the hospital, where he died two hours after.

REFERENDUM IS WEAKNESS TO UNIONISTS

Significant Admission by Organ of the Tariff Reformers—Can Only Defeat "Lloyd-Georgeism" With Union of Free Traders and Tariff Reformers, Says Graphic.

LONDON, Dec. 4.—As might be expected, the editorials in the party organs of both sides claim victory, but the Unionist newspapers betray disappointment over the results in London and Manchester, and while making much of the gains in Lancashire and elsewhere in the north, already virtually admit that the only hope now that the Liberal government will come back with a greatly reduced majority.

Mrs. Mary Baker Eddy's Last Photo



FOUR FRENCH NEWSPAPERS UNDER LANGEVIN'S BAN

La Presse, La Patrie and Le Canada in Disfavor—Le Devoir is Recommended.

ST. BONIFACE, Man., Dec. 4.—(Special.)—His Grace the Archbishop of St. Boniface has practically placed under the ban most of the leading French newspapers of the Province of Manitoba. He has not only condemned four very influential satires published in the French tongue, but he has recommended two others to the faithful of this diocese.

SCIENTISTS IN TORONTO LOTH TO BELIEVE REPORT

No Announcement Was Sent From Boston to Churches Here and Bulletin Was at First Disbelieved.

FOR THE CANADIAN NAVY

List of Successful Candidates for the Naval College.

ARCHDEACON KLOEFFER DEAD

Was Pastor of St. Mary's Berlin, and of Faculty of St. Jerome's College.

TRAPPED BY A TRUNK

When Wilfred Hussey Called for it He Was Arrested.

CAR HIT LORRY.

A C. P. R. lorry was struck by a street car at King and Peter-sts. Saturday evening, and knocked onto the sidewalk, striking Edward McBrien, 2 Vanarsdale-st., and Mike Paronowski, 31 Drummond-place. McBrien's right arm was broken. The other suffered slight bruises.

Porcupine Bulletin

KELSO, Dec. 4.—Weather moderate and cloudy; roads good. Porcupine Electric Railway Syndicate have discharged all their men. T. & N.O. Railway continuing work on its branch line to Porcupine. Everything booming.

MRS. BAKER EDDY PEACEFULLY PASSES ON

End Comes Late Saturday, But Was Kept Secret Until the Close of the Service in Mother Church at Boston—Pneumonia the Cause, Physician Reports.

Mrs. Mary Baker G. Eddy has passed on in her 90th year. She was, in truth, a wonderful woman, the like of which the age has never seen before, the like of which the ages may never see again. At sixty, almost, if not quite, a pauper, scarcely known to the world, twenty miles from Boston; she departs a millionaire, perhaps two or three times over, with a name which has penetrated even to the lonely hut of the Esquimaux. Single-handed and alone, she defied the world and all the things that are of the world, and conquered like a Napoleon. The thunder of the church, of philosophy, of science, of humor, and even of common sense, was directed at her in vain. Frouder than any man of the earth, prouder than the father of gods and men, this high priestess of the Christian Science cult, sat upon her ecclesiastical throne.

BOSTON, Mass., Dec. 4.—Mrs. Mary Baker Glover Eddy, the founder of Christian Science, is dead. Announcement of the passing of the aged leader, which occurred late last night at her home at Chestnut Hill, a suburb, was made at the morning service of the mother church in this city to-day.

"Natural causes," explains the death, according to George L. West, a district medical examiner, who was summoned a few hours after Mrs. Eddy passed away. Later Dr. West added to his statement by saying that the more immediate cause was probably pneumonia.

The news of Mrs. Eddy's death was made known simultaneously by Judge Clifford P. Smith, first reader of the mother church, at the close of the morning service, and by Alfred Farlow of the Christian Science Publication Committee, in a statement to the press. According to Mr. Farlow, Mrs. Eddy passed away at her home before seven o'clock last night.

Inclosed for Nine Days. "She had been indisposed for about nine days," said Mr. Farlow's statement, "and she had been in bed for some time as late as Thursday transacted some business with one of the officials of the Christian Science Church. She took her daily morning drive until two days before her going. Saturday night she fell quietly asleep and those around her felt at first sorry realizations that she had gone. Her thought was clear until the last and she left no final message."

"No physician was in attendance, but she had the assistance of the students who composed her household. With her the last of her departure were Calvin A. Frye, Mrs. Laura E. Sargent, Mrs. Ella S. Rathvon, Rev. Irving S. Tomlinson, her corresponding secretary, William E. Rathvon, and her secretary, Adam H. Dickey."

Funeral Private. "No arrangements regarding the time or the place of her burial have yet been decided upon. It is known, however, that she believed in simplicity on such occasions, and in compliance with this knowledge it is expected that the service will be private and of a simple nature. The probability of a prayer and readings from the Bible, with some brief selections from the Christian Science text book. Only her household, her household and the officials of the church are expected to be in attendance."

"A telegram was sent to her son, George W. Glover of Lead, S.D., appealing him of his mother's demise and requesting information as to his attendance and that of his family."

"Mrs. Eddy was born in Bow, N.H."

Continued on Page 7, Column 2.

A CHANCE TO DO GOOD.

Westminster Chapter, Daughters of the Empire, makes an appeal to the Toronto public on behalf of many of the patients at the Toronto Free Hospital for Consumption, that was burned during the week. The patients have been left practically without clothing, some having to remain in bed on that account. The ladies of the chapter have all along been doing what they could for these unfortunate, but the fire has made the situation acute. Contributions of clean, wholesome, underclothing and other garments will be most acceptable, and, if possible, should be sent to the sanitation office, 27 West King street, or to Mrs. Ross, agent of the chapter, 363 Sunnyside avenue, before 5 p.m. Wednesday.

Christmas Furs for the Family.

This crisp, wintry weather turns one's thoughts to what will be an appropriate gift for Christmas. Now is the time to make a selection, don't put it off until the day before the holiday. Through a fortunate buy, early last summer, the Dineen Co. have an exceptionally large stock of furs on hand and are in a position to meet all the demands of the Christmas trade. This rare showing of furs comprises fur sets, fur novelties, jackets, stoles, ruffs, fur caps and fur-lined coats, made up in the latest designs. Every article is designed and finished in the Dineen work-rooms by expert designers and furriers. Only superior linings are used, and moderate prices prevail. The Dineen guarantee of satisfaction accompanies every purchase, which means that you will be well pleased with whatever you may purchase at this reputable store.

HEAR DR. ELIOT TO-NIGHT.

The address to-night in Convocation Hall by Dr. C. W. Eliot, the distinguished American scholar, for so long head of Harvard University, will be well worth hearing by every thoughtful man. The lecture is under the auspices of the University of Toronto and the public is cordially invited.

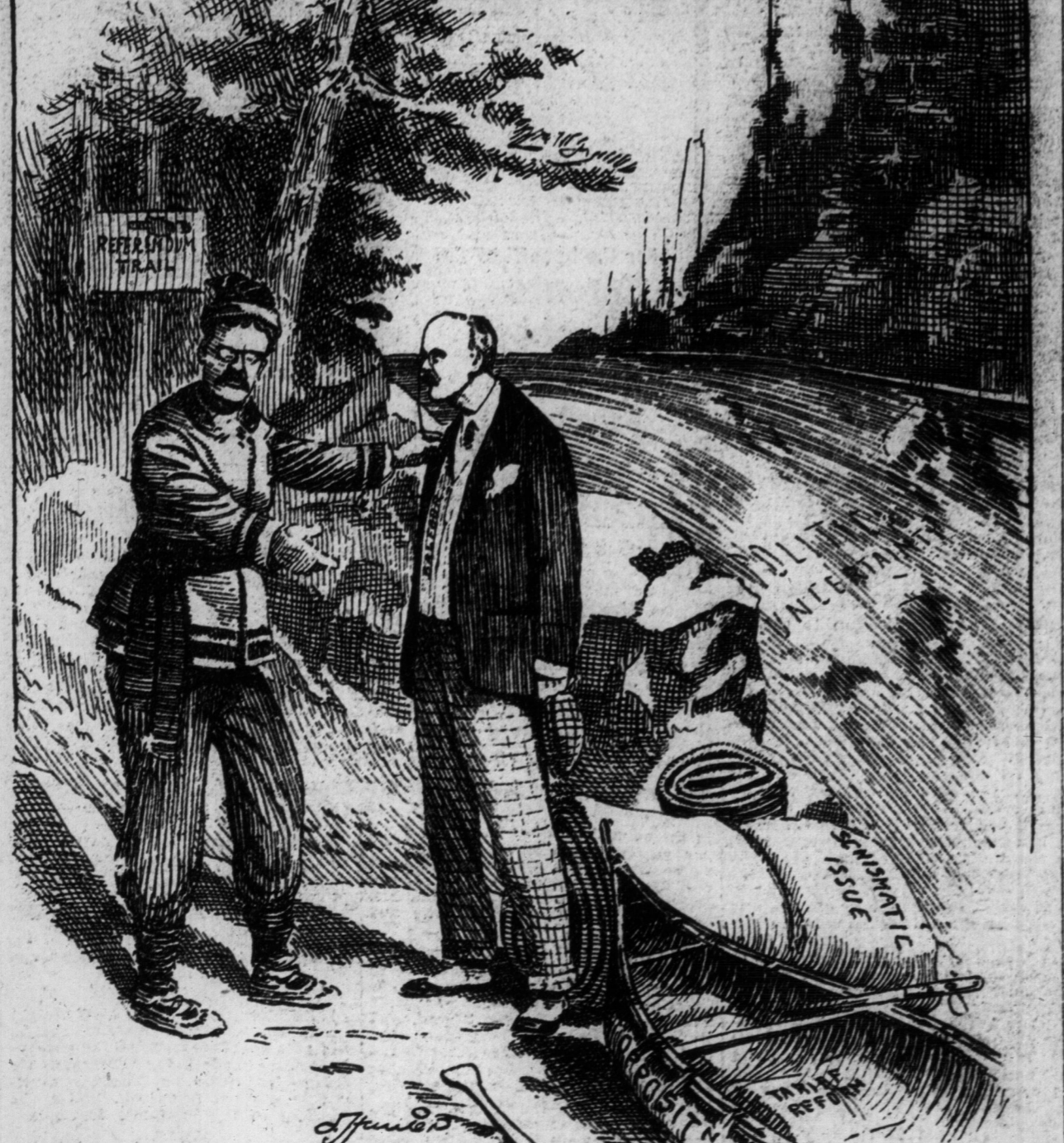
The Noted Scotch Author.

There are few men in the literary world who are held in such high esteem as is James Matthew Barrie, the Scotch author, and it is said that Charles Frohman has paid him over half a million dollars in royalties for plays in which Maude Adams has been seen. The best of these plays is "What Every Woman Knows," which will be the attraction to-night and for the remainder of the week at the Princess Theatre.

A POLITICAL PORTAGE.

Including those unopposed, 126 members had been elected to the new parliament at the close of yesterday's polling. The standing of the parties is as follows: Government coalition, Liberals 51, Labor 7, Irish Nationalists 5, Total 63. Opposition, Unionists 62. The Unionists gained seven seats, six from the Liberals—Salford (South), Ashton-Under-Lyne, Warrington, Darlington, King's Lynn and Grimsby, and one from the Laborites, Wigan. Liberals won four seats from the Unionists—Manchester (Southwest), Rochester, the Peckham division of Camberwell, and Exeter. So the net gain of the Unionists is three seats.

TRAPPED BY A TRUNK



GUIDE BORDEN: When you come to rapids like this you strike the Referendum trail and leave your dunnage for the Electorate to carry.

Continued on Page 7, Column 6.

5TH, 10.50, 4.50, Presents, DE, MS, T PLAY, KNOWS, QUALITY STREET, 1.50, \$2.00, place in the choir of the Loreto was to be filled, Bondi was selected by vote of 40 applicants, something in the scandal when he service—the congregational church burst into became the most noted Italy. His fame soon parts of the country and some offers of all sorts in the churches meant time than it does now folk choirs have gone a Gregorian chant. In attendance from the centres of Italy, including the "Corriere della Sera", "L'Ordine Corriere from Ancona, and many devoted columns to the daily written appreciation in language expressive of the Anglo-Saxon world as climax. Bondi always mysteriously delicate in style, the lights and shades of effects, the modesty of the entire performance, a greater eloquence of exquisite diction which the sons. Bondi has a powerful personality with a phrasing and an indubitable resonance voice and he has which when they occur, pure, make of the whole action. Such is always Bondi, the Divine light of the Italian

ATRE, Evenings 25, 50 & 75, Favorite, LAN, Songs, LY, HO, ctors, N, Blanche, CHOLS, Acting.



HAMILTON HAPPENINGS

DECLINES TO ENDORSE ANY MORE CANDIDATES

H. Hamilton Citizens' Campaign Committee Think It Would Be Imprudent.

HAMILTON, Dec. 4.—(Special.)—At a meeting of the citizens' campaign committee last night, the question of endorsing more candidates for the board of control was discussed...

Arrangements were made to have a series of public meetings in churches for the purpose of enlisting support for the plebiscite in favor of a reduction in license...

Rev. D. R. Drummond preached the annual sermon to St. Andrew's Benevolent Society in St. Paul's church to-night.

Special services were held in Victoria-avenue Baptist church to-day in celebration of the second anniversary of Rev. H. Edgar Allen's pastorate.

Commercial travelers' certificates for 1911 can now be had from Fred Johnson, room 5, Federal Life Building.

Chinese Raid. Ottawa, Dec. 4.—(Special.)—Two Chinese opium and gambling dens were raided by the police here to-day and 21 Chinamen arrested.

Victim of Alcoholism. Elizabeth Sullivan, 48 years old, 1 Duke-street, died in General Hospital yesterday of acute alcoholism.

Intense Suffering. From Dyspepsia and Stomach Trouble. Instantly Relieved and Permanently Cured by Stuart's Dyspepsia Tablets.

A New Discovery, But Not a Patent. Dr. Redwell relates an interesting account of what he considers a remarkable case of acute stomach trouble and chronic dyspepsia...

HAMILTON BUSINESS DIRECTORY

HAMILTON HOTELS

HOTEL ROYAL. City room completely renovated and newly carpeted during 1910.

COUNCIL MAY APPEAL DIRECT TO GOVERNMENT

To Override the Decision of the Ontario Railway Board as to New Street Railway Rules.

The report of Corporation Counsel Drayton advising that the city make application to the Ontario Railway Board for an order requiring the adoption of the street railway of property equipped "P.A.Y.E." cars...

It is possible, at the same time, that a protest may be lodged with the Ontario Government against the board's manner of dealing with the city.

Controlled Foster thinks a strenuous effort should be made to obtain properly equipped cars. If they failed, he would consider the course suggested by Controller Church.

These how seems to be little doubt that the referendum on a harbor commission, including Dominion Government representation, will be approved.

Other matters coming up are Controller Spence's proposal to invite tenders for the construction of a subway under Queen-st. from the city hall to the waterfront...

The annual meeting of the Toronto branch of the Ontario Vegetable Growers' Association was held at the Albion Hotel on Saturday afternoon...

YORK COUNTY COUNCIL. The members of the council concluded their labors on Saturday afternoon, and after interviewing Treasurer Macdonald left for their homes in the several parts of the county.

Out Goes Inspector Dew. LONDON, Dec. 4.—Chief Inspector Dew, who had control of the Crippen case, has been sent to the Crippen case, has been sent to the Crippen case...

It is a Good Show



for your clearness of vision if you get your Eye-Glasses, Spectacles and Lorgnettes here, for we make and handle the best only, and are very particular to fit lenses most exactly to help the vision.

What more appropriate gift for Father or Mother, providing they are deaf, than a

Stolz Electrophone

Thousands are using this wonderful device and cannot speak too highly of it. Write for particulars to

F. E. Luke OPTICIAN

159 Yonge St. TORONTO

CUT THEIR RATE

London Meets Reduction of Private Electric Company. LONDON, Ont., Dec. 4.—(Special.)—The water commission at Saturday night's meeting decided to make a reduction in the fixed rate for household lighting from 10 to 20 per cent.

Boy Broker Fleeced Laid. DOSTON, Dec. 4.—Robert E. Davis, a boy stock broker with offices at 33 State-street, is missing from Boston. With his vanishing a month ago sum of \$200,000 was estimated to have disappeared.

Your Time is Not Yours

It belongs to Those Depending on You—For Their Sakes Preserve Health and Strength. You never thought of it just this way before. While not feeling well you have neglected to take active means of restoring health...

York County and Suburbs

W. TORDON LIKELY TO VOTE ON A REFERENDUM

Sewage Committee Will So Advise Council—Intense Interest Shown in Question.

NORTH TORONTO, Dec. 4.—(Special.)—Are you in favor of a special act being obtained from the Ontario Legislature to provide for the construction of a sewerage system for the town of North Toronto...

This effect in a nutshell, in the outcome of Saturday night's meeting of the sewerage committee, a meeting which adjourned only on the stroke of midnight and which in point of spectacular interest has never been equalled in this town.

The result was only arrived at after a heated debate, with every member of the town council present and no matter what may be said as to the merits or demerits of the course adopted by the council of Saturday night...

It is not surprising, therefore, that the result was a dual plan, which would be a compromise between the two proposals...

Councillor Walter Mutton took the same view and stated that the general consensus of opinion throughout the town was opposed to a dual plan.

So long as I am chairman of the North Toronto sewerage committee there will be no illegal bylaws submitted with my consent...

Councillors Peers and Lawrence were strongly inclined to run a chance and test the validity of the measure, in view of the time that would be saved by the adoption of the dual plan...

Finally somebody began to suggest a compromise with the result, and it was agreed to recommend to council on Tuesday evening as a referendum, the opening draft, which was adopted by Council on Tuesday evening...

From the drop of the hat to the finish, and as a result the intense interest manifested in the matter, it was witnessed by one of the largest crowds of representative business men seen in the council chamber in a long time.

The Full Dress Suit. The Tuxedo Dinner Jacket.



Semi-ready Tailoring

The Clothes You Will Buy Some Day

Why Not Do it Now?

Semi-ready clothes will fill your every desire—whether you want conventional, quiet tailoring, or clothes which evidence the advance note in fashion.

Coupled with finer craftsmanship there is true harmony in every contour of each garment.

"Semi-ready" means something better—for we carefully avoid anything that is cheap and risky. We seek the trade of he who knows the worthiness of his work.

Ed. Mack, Limited, 81 Yonge St., Toronto.

The Famous Unexplained Painting

SHADOW OF THE CROSS

For the benefit of the Toronto Newsboys' Building Fund

New on Exhibition AT 15 ADELAIDE WEST NEXT TO GRAND OPERA HOUSE

Special Coupon For World Readers. This Coupon and 10 cents will admit bearer to the Exhibit of the Famous Unexplained Painting, "The Shadow of the Cross."

"It is certainly a wonderful and mysterious work of art; a silent sermon—all should see it."—Rev. Father Burns, Napa, California.

AMUSEMENTS

Under the distinguished patronage of His Honor Lieutenant-Governor and Mrs. Gibson.

Mrs. Phillip Snowden

The brilliant orator and debater. Subject: THE MOTHER OF PARLIAMENTS.

MASSEY HALL

TUESDAY, DEC. 6TH, 8 P.M. General admission, rush seats, 25c; reserved seats, 75c and 50c.

PRINCESS ALL WEEK

Wednesday and Saturday Matinee. CHARLES FROHMAN Presents

MAUDE ADAMS

IN J. M. HARRIS'S BEST PLAY

WHAT EVERY WOMAN KNOWS

ROYAL ALEXANDRA Seats—Ball Room 25c to \$1

THE LITTLE DAMOSEL

GAYETY BURLESQUE & VAUDEVILLE

BEHMAN SHOW

SHEA'S THEATRE

STAR BURLESQUE

GRAND OPERA HOUSE

THE THIEF

Toronto Symphony Orchestra

YORK PIONEER and his original Society

Dyeing and Cleaning

STOCKWELL, HENDERSON & CO.

BRICKS

TORONTO FIRE BRICK COMPANY

High Grade Red Pressed Bricks

Rich Red Colors, and made of pure shale. Also Field Tile.

Office and Works—Mimico. Phone Park 2838.

NIGHTS—Park 2897

YOUR FURNACE

WILL NEED REPAIRS TRY US

TORONTO FURNACE AND CREMATORY CO.

72 King Street East

Repairs for Steam, Hot Water and Hot Air Furnaces.

Dec. 6. This function offers the people of the district an excellent opportunity to obtain many useful articles...

WEST TORONTO. WEST TORONTO, Dec. 4.—(Special.)—Mrs. Willoughby Cummings, D.C.L., will give a lecture on behalf of government annuities in the auditorium of the College of Music on Tuesday evening...

DOVERCOURT. The ladies of Dovercourt-road brick church have made elaborate preparations for their sale of work to be held in the church school Tuesday...

DOVERCOURT. The ladies of Dovercourt-road brick church have made elaborate preparations for their sale of work to be held in the church school Tuesday...

DOVERCOURT. The ladies of Dovercourt-road brick church have made elaborate preparations for their sale of work to be held in the church school Tuesday...

DOVERCOURT. The ladies of Dovercourt-road brick church have made elaborate preparations for their sale of work to be held in the church school Tuesday...

DOVERCOURT. The ladies of Dovercourt-road brick church have made elaborate preparations for their sale of work to be held in the church school Tuesday...

DOVERCOURT. The ladies of Dovercourt-road brick church have made elaborate preparations for their sale of work to be held in the church school Tuesday...

DOVERCOURT. The ladies of Dovercourt-road brick church have made elaborate preparations for their sale of work to be held in the church school Tuesday...

DOVERCOURT. The ladies of Dovercourt-road brick church have made elaborate preparations for their sale of work to be held in the church school Tuesday...

AMUSEMENTS

Under the distinguished patronage of His Honor Lieutenant-Governor and Mrs. Gibson.

Mrs. Phillip Snowden

The brilliant orator and debater. Subject: THE MOTHER OF PARLIAMENTS.

MASSEY HALL

TUESDAY, DEC. 6TH, 8 P.M. General admission, rush seats, 25c; reserved seats, 75c and 50c.

PRINCESS ALL WEEK

Wednesday and Saturday Matinee. CHARLES FROHMAN Presents

MAUDE ADAMS

IN J. M. HARRIS'S BEST PLAY

WHAT EVERY WOMAN KNOWS

ROYAL ALEXANDRA Seats—Ball Room 25c to \$1

THE LITTLE DAMOSEL

GAYETY BURLESQUE & VAUDEVILLE

BEHMAN SHOW

SHEA'S THEATRE

STAR BURLESQUE

GRAND OPERA HOUSE

THE THIEF

Toronto Symphony Orchestra

YORK PIONEER and his original Society

Dyeing and Cleaning

STOCKWELL, HENDERSON & CO.

BRICKS

TORONTO FIRE BRICK COMPANY

High Grade Red Pressed Bricks

Rich Red Colors, and made of pure shale. Also Field Tile.

Office and Works—Mimico. Phone Park 2838.

NIGHTS—Park 2897

YOUR FURNACE

WILL NEED REPAIRS TRY US

TORONTO FURNACE AND CREMATORY CO.

72 King Street East

Repairs for Steam, Hot Water and Hot Air Furnaces.

Dec. 6. This function offers the people of the district an excellent opportunity to obtain many useful articles...

WEST TORONTO. WEST TORONTO, Dec. 4.—(Special.)—Mrs. Willoughby Cummings, D.C.L., will give a lecture on behalf of government annuities in the auditorium of the College of Music on Tuesday evening...

DOVERCOURT. The ladies of Dovercourt-road brick church have made elaborate preparations for their sale of work to be held in the church school Tuesday...

DOVERCOURT. The ladies of Dovercourt-road brick church have made elaborate preparations for their sale of work to be held in the church school Tuesday...

DOVERCOURT. The ladies of Dovercourt-road brick church have made elaborate preparations for their sale of work to be held in the church school Tuesday...

DOVERCOURT. The ladies of Dovercourt-road brick church have made elaborate preparations for their sale of work to be held in the church school Tuesday...

DOVERCOURT. The ladies of Dovercourt-road brick church have made elaborate preparations for their sale of work to be held in the church school Tuesday...

DOVERCOURT. The ladies of Dovercourt-road brick church have made elaborate preparations for their sale of work to be held in the church school Tuesday...

DOVERCOURT. The ladies of Dovercourt-road brick church have made elaborate preparations for their sale of work to be held in the church school Tuesday...

DOVERCOURT. The ladies of Dovercourt-road brick church have made elaborate preparations for their sale of work to be held in the church school Tuesday...

AMUSEMENTS

Under the distinguished patronage of His Honor Lieutenant-Governor and Mrs. Gibson.

Mrs. Phillip Snowden

The brilliant orator and debater. Subject: THE MOTHER OF PARLIAMENTS.

MASSEY HALL

TUESDAY, DEC. 6TH, 8 P.M. General admission, rush seats, 25c; reserved seats, 75c and 50c.

PRINCESS ALL WEEK

Wednesday and Saturday Matinee. CHARLES FROHMAN Presents

MAUDE ADAMS

IN J. M. HARRIS'S BEST PLAY

WHAT EVERY WOMAN KNOWS

ROYAL ALEXANDRA Seats—Ball Room 25c to \$1

THE LITTLE DAMOSEL

GAYETY BURLESQUE & VAUDEVILLE

BEHMAN SHOW

SHEA'S THEATRE

STAR BURLESQUE

GRAND OPERA HOUSE

THE THIEF

Toronto Symphony Orchestra

YORK PIONEER and his original Society

Dyeing and Cleaning

STOCKWELL, HENDERSON & CO.

BRICKS

TORONTO FIRE BRICK COMPANY

High Grade Red Pressed Bricks

Rich Red Colors, and made of pure shale. Also Field Tile.

Office and Works—Mimico. Phone Park 2838.

NIGHTS—Park 2897

YOUR FURNACE

WILL NEED REPAIRS TRY US

TORONTO FURNACE AND CREMATORY CO.

72 King Street East

Repairs for Steam, Hot Water and Hot Air Furnaces.

Dec. 6. This function offers the people of the district an excellent opportunity to obtain many useful articles...

WEST TORONTO. WEST TORONTO, Dec. 4.—(Special.)—Mrs. Willoughby Cummings, D.C.L., will give a lecture on behalf of government annuities in the auditorium of the College of Music on Tuesday evening...

DOVERCOURT. The ladies of Dovercourt-road brick church have made elaborate preparations for their sale of work to be held in the church school Tuesday...

DOVERCOURT. The ladies of Dovercourt-road brick church have made elaborate preparations for their sale of work to be held in the church school Tuesday...

DOVERCOURT. The ladies of Dovercourt-road brick church have made elaborate preparations for their sale of work to be held in the church school Tuesday...

DOVERCOURT. The ladies of Dovercourt-road brick church have made elaborate preparations for their sale of work to be held in the church school Tuesday...

DOVERCOURT. The ladies of Dovercourt-road brick church have made elaborate preparations for their sale of work to be held in the church school Tuesday...

DOVERCOURT. The ladies of Dovercourt-road brick church have made elaborate preparations for their sale of work to be held in the church school Tuesday...

DOVERCOURT. The ladies of Dovercourt-road brick church have made elaborate preparations for their sale of work to be held in the church school Tuesday...

DOVERCOURT. The ladies of Dovercourt-road brick church have made elaborate preparations for their sale of work to be held in the church school Tuesday...



Mark Envelopes for Mail Orders for Goods on this page "City Ad."

EATON'S DAILY STORE NEWS

Use the New Elevators in Queen St. Section.

Help Snowden... The Plain Statement of Ribbon Values

KEY HALL... DESS ALL WEEK... MS PLAY

NDRA... DAILY MATS... WILL J. KENNEDY

S THEATRE... BURLESQUE... SHOW GIRLS

ATS SAT 25 & 50... THE THIEF

LS FOR LIGHT OPERA... HIS ORIGINAL SOCIETY

ND CLEANING... BRICK COMPANY

CKS... BRICK COMPANY

ED REPAIRS... US FURNACE AND

STREET EAST... FURNACE

AM. HOT WATER AND FURNACES

ION OFFERS THE PER... FURNACE

ION OFFERS THE PER... FURNACE

ION OFFERS THE PER... FURNACE

Beautiful Muffs of Black American Opossum, \$4.50

Every woman who needs winter furs will be interested in this 8 o'clock pricing. Large Empire Muffs of black American opossum, being similar in appearance to Alaska sable.

Elegant Chiffon Motor Veils, 89c

Why not decide on one of these Motor Veils for the Christmas gift? They are made of a fine quality chiffon, that is positively moisture proof, and finished with a satin border and hemstitched ends.

Maltese Lace Handkerchiefs... Silk Handkerchiefs... Women's Neckwear

Gloves for Exacting Purchasers

The price is extremely low for the fine materials and careful workmanship that is put into them. Buy your Christmas gloves now.

Wallpaper Prices Suggest Home Papering

At a time when most people are thinking of Christmas gifts we are able to offer you the best opportunity of the year for papering homes.

Men's Fur-Lined Coat, \$52

Being one of ten lucky men to buy a Fur-Lined Coat at practically cost price means a morning selection Tuesday.

Christmas Gift Suspenders 50c

A practical gift is always the most appreciated by men. Why not a set of suspenders? There is a large variety of colors and fancy patterns of elastic and non-elastic, with kid-finished ends.

Mufflers... Boys' Sweater Coats Half Price, 50c

Night Robes... Winter Underwear

Neglige Shirts, 69c

Men's Heavy Elastic Ribbed Wool Underwear

Umbrellas Have a Constant Vogue

Men's and Women's Umbrellas, with extra fine silk mixed covers, best paragon frame, have handles of new shapes, mounted in rolled gold and sterling silver.

Electrical Aid to Hearing

The Acousticon, an instrument that restores distinct sound appreciation to most deaf persons—surely you could not find a more joyful gift for any friend who is so unfortunate as to have defective hearing.

Call and try the Acousticon. The demonstration will be of interest even if you do not have immediate need of the instrument.

MRS. EDDY'S LIFE STORY IS WEIRDLY WONDERFUL

Some Incidents in Her Career as Narrated by an Investigator—Origin of Christian Science.

THE T. EATON CO. LIMITED

THE T. EATON CO. LIMITED. The price is extremely low for the fine materials and careful workmanship that is put into them.

PROF. HARCOURT BEREAVED

Wife Died Yesterday From Poison Taken by Mistake. GUELPH, Dec. 4.—(Special.)—The wife of Prof. Harcourt, head of the chemistry department of the Ontario Agricultural College, met with a tragic death early to-day, having taken oxalic acid in mistake for Epsom salts.

OBITUARY

Thomas Gibson. The death occurred Saturday of Thomas Gibson, proprietor of the Gibson House, East Queen street, the result of an acute attack of rheumatism.

SEPARATE CHURCH AND STATE

LIBERTY, Dec. 4.—The Portuguese Government is preparing a decree for the separation of the church and the state, and this has resulted in collision between Republicans and clericals in various parts of the country.

WILSON'S INVALIDS' PORT

The best evidence of the unique properties of WILSON'S INVALIDS' PORT is to be found in the fact that the reputation which it enjoys is mainly due to the spontaneous personal testimony of many prominent members of the Medical Profession.

is to be found in the fact that the reputation which it enjoys is mainly due to the spontaneous personal testimony of many prominent members of the Medical Profession.

is to be found in the fact that the reputation which it enjoys is mainly due to the spontaneous personal testimony of many prominent members of the Medical Profession.

is to be found in the fact that the reputation which it enjoys is mainly due to the spontaneous personal testimony of many prominent members of the Medical Profession.

is to be found in the fact that the reputation which it enjoys is mainly due to the spontaneous personal testimony of many prominent members of the Medical Profession.

is to be found in the fact that the reputation which it enjoys is mainly due to the spontaneous personal testimony of many prominent members of the Medical Profession.

is to be found in the fact that the reputation which it enjoys is mainly due to the spontaneous personal testimony of many prominent members of the Medical Profession.

is to be found in the fact that the reputation which it enjoys is mainly due to the spontaneous personal testimony of many prominent members of the Medical Profession.

is to be found in the fact that the reputation which it enjoys is mainly due to the spontaneous personal testimony of many prominent members of the Medical Profession.

is to be found in the fact that the reputation which it enjoys is mainly due to the spontaneous personal testimony of many prominent members of the Medical Profession.

is to be found in the fact that the reputation which it enjoys is mainly due to the spontaneous personal testimony of many prominent members of the Medical Profession.

is to be found in the fact that the reputation which it enjoys is mainly due to the spontaneous personal testimony of many prominent members of the Medical Profession.

is to be found in the fact that the reputation which it enjoys is mainly due to the spontaneous personal testimony of many prominent members of the Medical Profession.

is to be found in the fact that the reputation which it enjoys is mainly due to the spontaneous personal testimony of many prominent members of the Medical Profession.

is to be found in the fact that the reputation which it enjoys is mainly due to the spontaneous personal testimony of many prominent members of the Medical Profession.

is to be found in the fact that the reputation which it enjoys is mainly due to the spontaneous personal testimony of many prominent members of the Medical Profession.







Six Race

Boys from 11 to 13, Price \$1.15
Boys from 1 to 5, Price \$1.25
Men from 6 to 10, Price \$1.60

GUINANE

and Youths' Shoes
DRETT WEST
Times To-night

Men's League

Showing Club Saturday
The latter were in the outside games, a performance was a

Highlights

The Qualls and Swans
light in the Royals'
postponed till next Sat-

His Pippins will romp

League.
manager of the Kings,
robbed them of the
important game, the

Ill Gossip

For a patron of the
out game to address a
player on the
usually, are
of their reputa-

Our lamps are out

led Kelly, cheerfully,
ot of easy marks like
to see me fool the pub-

Why haven't you done it

Why don't you do it
replied Matty, tip-
then proceeded to
asers around the Red's

Heavenly spotted by

means musical, and his
whimsical.
e place in the direction
of wire, in right field,
rn at all, he slammed

The Last Drop
of "Old Orkney" Whisky is
just as good as the first, because
it is just the same as the first
and every drop is absolutely perfect.

The Broadviews Win Final From Thistles

LITTLE ROCK, Dec. 2.—That Association football took a warm spin in the affections of Toronto people was much in evidence this afternoon, when a large and enthusiastic crowd traveled down to Little York to witness the final game between Thistles and Broadviews for the 2nd and 3rd championships.

Hamilton Alerts Wallop Petrolia O.R.F.U. Final

HAMILTON, Dec. 2.—Before a large crowd at Britannia Park, the Alerts and Petrolia met this afternoon to decide the junior championship of the O.R.F.U. It was very cold and the grounds were as hard as a rock.

Curling at Lakeview To-night

Not much behind their sister clubs the Lakeviews begin to-night on their new floor in Harrison-street. The four sheets are in good condition and the members are expected to turn out for the first curling of the season.

Barleythorpe Winner Feature at Moncrief

Danfield, Favorite, Runs Outside Money—Results at Juarez and Oakland.

JACKSONVILLE, Dec. 2.—Barleythorpe, running in the colors of James E. Danfield, the New York turfman, and held at 8 to 1 in the betting, was returned the winner of the Quikstep Stakes at Moncrief Park to-day. Ryestraw was second with Ella Bryson third.

Oakland Results

SAN FRANCISCO, Dec. 2.—Roy Jr. made a runaway race of the Crocker Stakes at Emeryville this afternoon, and won the event by fully eight lengths from Servience.

North Toronto Route to Ottawa and Montreal Increasing in Popularity

The Canadian Pacific train leaving North Toronto Station at 10 p.m. daily, except Sunday, is deservedly increasing in popularity with Toronto comfort-loving travelers.

Pittsburgh, Dec. 2.—A uniform divorce law that will be introduced in the legislature of every state will be prepared by the National Reform Association at the opening of its convention in this city to-morrow.

Detroit 6, Philadelphia 2

HAVANA, Dec. 2.—The Philadelphia American League baseball team which arrived here a few days ago, was defeated today by the Detroit in the first game of a series. The score was Detroit 6, Philadelphia 2.

Get The Kind You Have Always Ordered—O'Keefe's SPECIAL EXTRA MILD ALE
The name O'KEEFE means everything to those who prefer a light ale.
The name O'KEEFE is a guarantee of absolute purity—of richness and fine flavor—of sparkling clearness—of perfection in brewing and ageing.

DRINK ROBERTSON'S DUNDEE SCOTCH WHISKY
JOHN ROBERTSON & SON, Ltd., Distillers, 310 Notre Dame St. W., Montreal

The World's Selections BY CENTAUR

JACKSONVILLE.—The card for Monday is as follows:
FIRST RACE—Two-year-olds, six furlongs:
Enord Bank, Busy Mas, Nembar, Red Rob, Cardiff, Demand.

Old Country Soccer

LONDON, Dec. 2.—The following are the results in the various leagues to-day:
The League—First Division:
Everton 1, Manchester 0.

Balm Beach Gun Club

The first shoot of the Balm Beach Gun Club was held on their grounds this afternoon and the following scores were made. These shoots will be held every Saturday and visitors are always welcome.

Ottawa Hockey Conjecture

OTTAWA, Dec. 4.—It is understood that Andrew Sutherland, president of the Interprovincial Amateur Hockey Association, will call a meeting of that body for next Saturday evening, when the schedule for the season will be decided.

DR. SOPER DR. WHITE

In the following Diseases of Men:
Files, Varicocele, Dyspepsia, Stricture, Hemorrhoids, Asthma, Syphilis, Loss of Vitality, Catarrh, Prostatitis, Skin Diseases, Diabetes, Emissions, Kidney Affections.

Wherein Mr. Mutt's Sartorial Judgment Gets Little Jeff the Merry Ha! Ha! - By Bud Fisher









ESTABLISHED 1884 JOHN CATTO & SON Christmas Handkerchiefs

THE WEATHER METEOROLOGICAL OFFICE, Toronto, Dec. 4.—(8 p.m.)—Cold weather, with snow flurries, has prevailed to-day throughout Canada.

MRS. EDDY PEACEFULLY PASSES ON Continued From Page 1. July 19, 1821, and was therefore in her 89th year.

NON-CATHOLICS' MISSION BY THE PAULIST FATHERS Dissertation on the Doctrine of Indifferentism—Loyalty to Truth is Demanded.

How do YOU Entertain? When guests "drop in"—when conversation falls—do you not long for the ability to entertain musically?

Blend Java and Coffee at 45c lb. Breakfast necessities.

STEAMSHIP ARRIVALS. Dec. 3. At From Minnesota... New York... London

TODAY IN TORONTO. Dr. Eliot at Canadian Club; at Convocation Hall (public).

REFERENDUM IS WEAKNESS TO UNIONISTS Continued From Page 1. normally high percentage of votes last year.

Commercial Travellers' Association of Canada. Gentlemen: Six years ago you elected me as Director to your Board of Management.

JOHN CATTO & SON 55 to 61 King Street East. TORONTO. FOUND DEAD WITH GAS ON

R. MOFFATT UNDERTAKER Removed to 571 College Street, Corner Manning Ave., Toronto, Ltd. in Attendance

Physician's Statement. Dr. George L. West, the medical examiner, who was called to the home of Mrs. Eddy, and who filled out the death certificate, made the following statement:

Physician's Statement. Dr. George L. West, the medical examiner, who was called to the home of Mrs. Eddy, and who filled out the death certificate, made the following statement:

PTOMAIN POISON VICTIM. Mary Locke, 70 years old, was found suffering with convulsions in her bed, 12 Beverley-street, Saturday morning.

CEETEE UNDERWEAR Soft, velvety and healthy. The "sheep" trademark on undergarments is an assurance of absolute comfort and satisfaction to the wearer.

CEETEE UNDERWEAR Soft, velvety and healthy. The "sheep" trademark on undergarments is an assurance of absolute comfort and satisfaction to the wearer.

NORMAN A. CRAIG (UNDERTAKER) 1253 QUEEN ST. WEST, TORONTO.

NIAGARA FALLS, Ont., Dec. 4.—City Policeman Frank Farrell today made a discovery that the police believe will aid in breaking up an organized gang who have systematically smuggled undesirable aliens from the States to Canada for months.

Father Morrissey's Prescriptions. have been curing for 30 years, and are curing to-day, all the common ailments that come to every family.







# IMPERIALIZING HUDSON BAY

Arthur Hawkes' article in The Nineteenth Century and After for November on "Imperializing Hudson Bay" has attracted the attention of The New York Sun, which accepts Mr. Hawkes' conclusion that Hudson Bay Railway may be taken as built.

While The World is not able to follow Mr. Hawkes in his views as to the failure of public ownership in railways, and we observe that he discreetly ignores the T. & N. O. road, which ought to be able to carry freight in accord with him in his ideas as to the value of Hudson Bay as an imperial seaboard, and we congratulate him on having been able to convince The New York Sun of something so alien to its inclinations.

The Sun makes several excerpts from Mr. Hawkes' clever article, and recognizes that the railway, politically, "would mean a long step forward in the imperial scheme. England would be brought closer to Vancouver and the far east, and the tip with Canada would be strengthened morally and materially. There is still opposition to the project on the part of the manufacturing interests in the older parts of the Dominion," adds The Sun, "but the West, growing in population and resources, young, sturdy, sanguine and enterprising, will not brook delay."

The governor-general of Canada has just completed a journey from Ottawa to Winnipeg, by way of the Hudson Bay, Fort Churchill, Hudson Bay, and the St. Lawrence, Cape Breton, New Brunswick and Quebec. The Dominion Government is now deciding whether to build and operate the railway from the Hudson Bay to the Valley to Hudson Bay, or to turn the work over to one of the existing railway systems in the prairie provinces. The Champlain Society of Canada is issuing a new edition of Samuel Hearne's Journal of his travels from Fort Churchill to the mouth of the Coppermine River, 1869-72. Here are fortuitous circumstances that almost look like a conspiracy to herald the opening of a new imperial route, the bringing of the best bread cupboard of the imperial household a thousand miles nearer the millions who must be fed from afar across the empire.

This article is written on the Royal Edward, bound for Bristol from Montreal, with two parties on board, each of which is significant in its way as the great journey of Lord Grey, of the part which the science of transportation is playing in the development of inter-imperial relations—a delegation of the British Chamber of Commerce which has just returned to Canada, and is the first mission of its kind sent to Canada by the chief commercial organization of a great British city; and a party of journalists, without a common name, organized for the purpose of interpreting the west of England to the people in that tremendous section of North America, who may be induced to approach it, through the Hudson Bay and the Bristol Channel. And, if another circumstance were desired to pile text on text for this discourse, there is here the band of the Royal Canadian Mounted Police, playing a special piece and received wireless acknowledgment therefor, as the Royal Edward sped past the lonesome cliffs of Belle Isle, in order that the historical accuracy which the operators might for once feel the blessed thrill of their partnership in the imperial city; and the potency of their call upon the king's servants who frequently stand before

Certain among us mourn over what they conceive to be an inappreciation of historical perspective in the younger components of the British Empire. As a rule, those who have abundance of perspective make no history. Those who are making history do not bother about perspective. The latter, especially the case in countries where public policy and private enterprise are largely occupied with developing national resources and finding employment for the overpopulated places of ancient communities. The necessity of making both ends meet, makes a great deal of history, in the making, unaccountable to short-sighted eyes.

Canada's Modern History. It is too early for conclusive histories of modern Canada to be written. But it is not too early for the material that is essential to the proper writing of such a history to be gathered and sorted. The Champlain Society of Canada is doing that in a fashion which may be unfamiliar to many who have entered into the labor of others in the writing of history. The society is primarily a historical society, and its work is to gather and sort the material that is essential to the proper writing of such a history.

An Early Adventurer. Lord Grey, on a rock at Churchill harbor, saw the chielled autograph, "Samuel Hearne, cut there a hundred and forty years ago, which seems likely to be a durable epitaph for all kinds of trade of which the early adventurers never dreamed. Hearne was the governor of Fort Churchill, who meekly surrendered to the Perouse. But his fame belongs to the time when, at twenty-four, twenty-five and twenty-six years of age, he traveled over unknown country from Fort Churchill on the west coast of Hudson Bay to the mouth of the Coppermine River on the Arctic Ocean. In search of the copper which the Indians had told him was in great quantities, Hearne twice returned to Churchill defeated. The first time his Indians left him. The second time he went back with his quadrants and compass. The third time he was successful, because he was guided by Matonabee, a born leader, on whose advice women were included in the expedition, for they were made for labor; one of them can carry or haul twice as much as two men can do. They also pick out men, mend our clothing, keep us warm at night, and in fact, there is no such thing as traveling "any considerable distance, or for any length of time, in this country, without their assistance.

Women, tho they do everything, are maintained at a trifling expense, for, as they always stand close, the licking of their fingers, in scarce times, is sufficient for their subsistence.

Tyrrill's Explorations. I am not concerned with the fascinating story of Hearne's life, which is now somewhat out of date, as much as with the valuable contribution to historical perspective, which the repetition of it by the Champlain Society makes at this particular epoch in the history of Hearne's base, which was then gateway to an untraced territory whose future in the British hegemony is one of the most interesting of the present.

Creation of New Commerce. All that has been changed there will still powerfully influence the direction of the commerce in what Canada as a whole recognizes as its predestined channels. The successors of the gentlemen, adventures for centuries, of the Hudson Bay, the view that trade in fur was the only fore-ordained traffic for the Hudson Bay basin. They were not always nice in their methods of impressing their indignation on the natives, but they wanted to spread modernity northward. The Western Canadians know that in the field of public policy, at least, nothing fears to be approached. But they reckon on the unfriendliness of the interest, which, being the mightiest negation of the old time opponents of northward expansion, is passing eastward and westward of vast streams of personal and commodity traffic; and does not take a severe philippic view of the commerce.

Navigation Possibilities. The Hudson Bay problem is not even a problem of ice on the bay. Hudson Strait, five hundred miles long, with currents that worry sailing vessels, when the winds are not kind, furnishes the only real problem to the navigator. The Canadian Government has demonstrated the feasibility of the Strait for four and a half to five and a half months, for ordinary steamers. Lord Grey has seen conditions for himself and beheld, they are very good.

Essentially Taken as Built. Essentially then, the Hudson Bay Railway may be taken as built. The provision of elevators and harbor facilities, the lighting of the island and coast of the Straits are being prepared for, sanguine politicians, with their eyes on the cultivation of the land, which, summer excursions, the Lord Grey course will be available to untraced people. But it is early for prophets who know nothing of elevators and harbors, and the directors of the Canadian International Exhibition, that is to be held at Winnipeg in 1914, will organize European parties to travel via the Nelson, Churchill and Hudson Bay.

July One Problem. In truth, there is no discussion in the west about the Hudson Bay route to Britain. All the talk is as to how the business shall be handled. The situation has a peculiar interest for the British investor who is nervous about innovations in governmental finances, because Sir Wilfrid has been urged to build and to operate the road as a government enterprise.

Choosing a Port. The government surveyors' earlier reports favored the mouth of the Nelson as against the mouth of the Churchill for the port of the Hudson Bay

# UNDER SEAL YORK SPRINGS WATER

is bottled and sealed at the Springs. You are sure of the genuine in all its purity.

YOU ORDER One Gall. bottle, 20¢ Six Gall. bottle, 1.00 One Quart, 50¢

Railway. Lord Grey, it is asserted, is for Churchill, as to which his judgment is in accord with that of nearly all who have studied both places. A Nelson harbor means a shorter haul than Churchill, from the prairie provinces. For the purpose of this article, the difference between the two harbors is a detail which, in view of the admitted heavy dredging that will be essential at Nelson, will not affect the ultimate saving on the transportation of the Saskatchewan farmers' grain and stock to the United Kingdom.

Navigation Possibilities. The Hudson Bay problem is not even a problem of ice on the bay. Hudson Strait, five hundred miles long, with currents that worry sailing vessels, when the winds are not kind, furnishes the only real problem to the navigator.

Essentially Taken as Built. Essentially then, the Hudson Bay Railway may be taken as built. The provision of elevators and harbor facilities, the lighting of the island and coast of the Straits are being prepared for, sanguine politicians, with their eyes on the cultivation of the land, which, summer excursions, the Lord Grey course will be available to untraced people.

July One Problem. In truth, there is no discussion in the west about the Hudson Bay route to Britain. All the talk is as to how the business shall be handled. The situation has a peculiar interest for the British investor who is nervous about innovations in governmental finances, because Sir Wilfrid has been urged to build and to operate the road as a government enterprise.

Choosing a Port. The government surveyors' earlier reports favored the mouth of the Nelson as against the mouth of the Churchill for the port of the Hudson Bay

United States annexing Canada, as politics and in common sense, it is there is of the annexation of the moon. But it is no novelty in western Canada, as it is not a novelty in the apostles who were before their time. But, unlike most other apostles, the first preachers of the modern Hudson Bay creed are alive to realize in the government the fulfillment of their visions. At Winnipeg the other day, two of them were at a luncheon to the Brato Chamber of Commerce delegates, one of them, Mr. W. H. Bennett, secretary of the Winnipeg Board of Trade, whose report on Hudson Bay and Strait to the Winnipeg Board of Trade, in 1881, is a singular aid to the discovery of true historical perspective. For the present educational system in Hudson Bay was sure to come, it is not easy to think of a similar case in which, for business reasons, and perhaps unconsciously, men were organized for the major purpose of joining the arm of Providence.

Changes of Thirty-Five Years. I was with Mr. Sutherland and Mr. Bell a few weeks ago, when one of them reminded the other of their early days in Winnipeg, when they were only 35 years ago, when the Hudson Bay Co. factor posted notices on the church door warning farmers that, if they did not take more than two bushels of wheat from each grower, and that payment would have to be accepted in trade. You see history—the building of new fabrics of the world that any which come before your eyes, when you look back on such pioneers who direct the organization of an international exhibition, on the very spot where the present high commissioner of Canada named his offices, when he was himself a gray-haired veteran.

Winnipeg has become the largest single wheat mart in the world. For the month of the year, the new tributary to Winnipeg has begun to grow wheat. Every discreet observer from British who examines Canada, stands amazed at the wide, invigorating scope in which the empire may renew its strength. The governor-general, heralding the back-door-to-the-ice-cupboard route bears tidings of more than any which come before your eyes, when you look back on such pioneers who direct the organization of an international exhibition, on the very spot where the present high commissioner of Canada named his offices, when he was himself a gray-haired veteran.

Empire-spanning Youth. I do not say I did, when I speak of the empire renewing its youth, the delegation from the Bristol Chamber of Commerce perfectly illustrated the point. Let me condense the story they have told in Quebec, in Montreal, in Toronto, in Hamilton, in St. Catharines, in Guelph, in Stratford, in London, in Sudbury, in Port Arthur, in Winnipeg, in Prince Albert, in Regina, in Moose, on trains, on steamboats, and in motor cars—wherever they have been received. Bristol, they said, became wealthy and powerful to the future. She failed to keep pace with modern shipbuilding until her accommodations were inadequate for nineteenth century necessities. Liverpool, they said, was a port of call, but not a port of call. It did not have a modern dock, suitable for vessels up to a thousand feet long. Even then there were crooked and crooked intelligibility with the world's fleet, where a one-and-a-half-per-cent rate was a speculation that could never become a five per cent. on a far-seeing investment.

Essentially Taken as Built. Essentially then, the Hudson Bay Railway may be taken as built. The provision of elevators and harbor facilities, the lighting of the island and coast of the Straits are being prepared for, sanguine politicians, with their eyes on the cultivation of the land, which, summer excursions, the Lord Grey course will be available to untraced people.

July One Problem. In truth, there is no discussion in the west about the Hudson Bay route to Britain. All the talk is as to how the business shall be handled. The situation has a peculiar interest for the British investor who is nervous about innovations in governmental finances, because Sir Wilfrid has been urged to build and to operate the road as a government enterprise.

## BANK OF HAMILTON

To realize the importance of frugality is to acquire the habit of saving—and of depositing your savings in a Bank.

You need not feel embarrassed in depositing as small a sum as one dollar in the Bank of Hamilton.

Such a step will mean for you the commencement of a new era of ease and content.

TORONTO, 24 YONGE STREET. Branches in the City of Toronto: Cor. Yonge and Gird; Cor. Queen and Spadina; Cor. College and Ossington; Arthur and Bathurst; and West Toronto.

Head Office, HAMILTON

## HELP TO COUNTERACT ANTI-BRITISH VIEWS

President of Canadian Defence League Would Have Labor Unions and College Frats, Canadian.

President Kingsford of the Ontario Division of Canadian Defence League took the chair at Frederick Villiers' lecture in Massey Hall on Saturday night and briefly explained the aims of the league, statements of which were afterwards placed on the screen. Printed records of the proceedings of the first conference of the league, as endorsed by Sir Frederick Borden and others, were placed on sale.

"We want," said the president, "to ask you to help us to get legislation to increase the present educational system to include military education in schools, colleges and universities. We wish to have every man taking to school and college all should join the militia.

"Help us to counteract the influence which is undermining British sentiment. This is not the time or the place to introduce any question that causes friction, but we wish to bring to your attention.

"We wish to see the labor unions and other fraternal and patriotic organizations, and to foster a united Canadian nationality, loyal to the British Empire, and to its duty. (Applause.) We feel the true interests of Canada will be preserved as long as the British flag flies. Any policy, commercial or political, tending to impair the connection with Great Britain is to be considered as unpatriotic. Canada must show her willingness to bear her share of the cost of England was spending \$50,000,000 more than three times the whole Dominion revenue on defence. Any movement England might be involved in a war of life and death.

"We wish to go and stand behind our British brothers in the line of battle." Kingsford, and others came in reply. He wished them not only to join the league, but to influence their friends and to teach young men what they would lose if they were not in the ranks of the British Empire. Each individual man must be prepared to make any sacrifice. The responsibility of the war is not to be shared by a few, but by all. The defence of Canada more secure" was his final appeal.

A large body of military men and many officers of all ranks were present, the audience being unusually large. Mr. Villiers was not only to join the league, but to influence their friends and to teach young men what they would lose if they were not in the ranks of the British Empire. Each individual man must be prepared to make any sacrifice. The responsibility of the war is not to be shared by a few, but by all. The defence of Canada more secure" was his final appeal.

## Itemized from The Sunday World

British Elections— If you got the last edition of The Sunday World you have the complete and detailed results of Saturday's polling.

Local— Mr. Levese may be a majority candidate on a "war with the Street Railway" platform.

Medical sophomoria and freshmen had a pitch in on Varsity lawn Saturday morning, the latter proving triumphant.

The Ontario Gazette announces the incorporation of the Spanish River Pulp and Paper Mills, Limited, with headquarters in Toronto, and the capitalization of \$4,000,000. The provisional directors are: W. J. Sheppard, J. B. Tupper, G. C. Loyaga, J. Wood and L. M. Wood.

Corporation Counsel Drayton advises asking the Ontario Railway Board to compel the Toronto Railway Company to use proper style pay-as-you-enter cars.

Canada— At the Winnipeg vice enquiry Saturday, J. A. M. Atkins, K.C., on behalf of respectable residents in the neighborhood of the segregated section, gave evidence to show of indecencies noted in that district.

United States— Locomotive engineers on western railways are voting for a strike unless wages are increased 15 per cent.

At the Leblanc murder trial, S. D. Elmore, attorney for Mrs. Glover, testified that the girl had said she had been hiding under the bed three days in the Glover home after the shooting.

Boston and Return, \$15.25, C.P.R. New England Excursions. Tickets to Boston, Mass., Fitchburg, Mass., Ayer, Mass., and return, will be on sale at all C. P. R. Toronto offices at the rate of \$15.25; Greenfield, Mass., \$14.10; and Gardner, Mass., \$14.85. These fares will apply via Montreal. Tickets are good during December 8, with a return limit of 15 days. Sleeping car accommodation, tickets, etc., C. P. R. City Ticket Office, southeast corner King and Yonge-sts. Under the clock.

New Chinese Loan. PEKIN, Dec. 4.—The Chinese Government has opened negotiations for a further and distinct foreign loan of \$25,000,000, to be used for development of the navy. This is the result of the report made by Prince Tsai Suan, the uncle of the Emperor, after his visit to America.

## An Office Desk that will Save Hours

This "Office Specialty" System Desk has all the advantages of a roomy flat top desk, and a Vertical Letter Filing Cabinet and a Card Index Cabinet. How much better it is to have your every-day records filed for instant reference right at your hand than to have them stuffed into pigeon holes or box drawers.



FACTORY OFFICE SALES FOLLOW-UP REPORTS REPAIRS DEPT.

Note how you can index the different records you keep. You can apply this same principle to your own business, and to the records under your care. These Desks are handsomely made in Quarter-cut Oak, in three sizes:—

Three Sizes—54 x 32 in. 60 x 36 in. 60 x 38 in. Prices—\$30.00 \$35.00 \$50.00

Let us send a system desk to your office on approval, return at our expense if you do not like it.

### OFFICE SPECIALTY MFG. CO.

97 Wellington Street West, TORONTO

Branches: Halifax, Montreal, Ottawa, Toronto (Head Office), Hamilton, Winnipeg, Regina, Calgary, Vancouver

## MRS. PETER GREEN, J.

DESORONTO, Ont.

Says:—"Dr. Wood's Norway Pine Syrup is the Best Cough Syrup I Ever Used."

She writes:—"Dr. Wood's Norway Pine Syrup is the best cough syrup I ever used. My baby had a very bad cold. I was using Dr.'s medicine but that didn't seem to help the awful cough she had until I got a bottle of this great syrup. I have it in the house at the present time for the children and I think I couldn't get along if I didn't have it. I wish to thank you for all the good it has been to my family."

Dr. Wood's Norway Pine Syrup contains all the lung healing virtues of the Norway pine tree, which combined with Wild Cherry bark and other potent remedies makes it one of the greatest known preparations for Coughs, Colds and all Throat and Lung Troubles.

It is put up in a yellow wrapper; three-pine trees the trade mark; price 25 cents at all dealers.

Manufactured only by The T. Millburn Co., Limited, Toronto, Ont.

## DODD'S KIDNEY PILLS

QUEST FOR KIDNEY DISEASE

QUEST FOR RHEUMATISM, GOUT, DIABETES, GRAVEL

23 THE PRINCE

## Huntsville, Ont.

Use in sending you a box of your Pills. I suffered a prostration, and not able to attend to my work, and now I can do my life to them.

My trouble was cured by your Pills. I suffered a prostration, and not able to attend to my work, and now I can do my life to them.

My trouble was cured by your Pills. I suffered a prostration, and not able to attend to my work, and now I can do my life to them.

## THE DEAD

Red for Burial.

4.—Just as the his hands to lift a year-old Lillian bare her for burial upright in her bed her eyes and my mama, I'm

back in a chair, regarding presence of blankets, wrap them and rushed to the parents. A and said he believed come back been ill five days this afternoon she sized and none showed any signs

ous ration

Weak, Miserable.

sickly people who changed nerves they Heart and Nerve equilibrium of these bring back the stem to a perfect

their restorative and tissue of extraordinary curative immediately



STRONGER TONE SHOWN ON ALL WHEAT MARKETS

Chicago Turns Strong Under Short Covering Movement—Winnipeg Makes Similar Advance.

World Office. Saturday Evening, Dec. 3. Liverpool wheat futures closed to-day 1/4 higher than yesterday; corn futures were also 1/4 higher. At Chicago December wheat closed 1/2 higher than yesterday; December corn, 1/4 higher and December oats 1/2 higher. At Winnipeg, December wheat closed 1/2 higher, December oats 1/2 higher. Chicago car lots to-day: Wheat No. 1, contract 104 1/2, contract 104, contract 104 1/2. Winnipeg wheat receipts were 424 cars, against 493 a week ago and 482 a year ago. Oats to-day 81 cars. Barley, 8 Flax, 23. Duluth receipts of wheat to-day were 81 cars, against 272 a week ago, and 71 a year ago. Minneapolis 286, 285, none.

Winnipeg Inspection. Winnipeg cars of wheat to-day graded as follows: No. 1 northern, 45; No. 2 northern, 126; No. 3 northern, 10; No. 4 northern, 47; No. 5 northern, 27; No. 6 northern, 22; feed, 4; rejected, 17; winter.

Table with columns: Wheat, Receipts, Shipments, Oats, Shipments. Values in thousands of bushels.

ST. LAWRENCE MARKET.

Receipts of farm produce were 400 bushels of grain, 12 loads of hay and one load of sheaf straw, a large number of loads of mixed produce in the north building, and a fair supply of butter, eggs and poultry on the basket market. There was a good demand for nearly everything on sale. Prices generally were about steady. Barley—Six hundred bushels sold at 60c to 62c.

Butter—Prices ranged from 18c to 19c per lb. The bulk selling at about 28c per dozen. Eggs—Prices ranged from 18c to 20c per dozen. The bulk going at about 60c per dozen. Apples—Prices ranged from 22c to 24c per bushel. Potatoes—Potatoes sold by the single bag at 90c.

Market Notes. The heavy winter choice lots of poultry on the basket market were John Barron, J. L. Paterson of Swan Brook, J. Tomlin and the Harris Abattoir Company. One young street farm raised four pairs of chickens that weighed 46 pounds at 18c per pound, but they were not of quality and properly dressed.

Poultry Wholesale. J. J. Ryan reports prices for poultry at the car lot at 10c to 12c per lb. Mr. Ryan bought and handled four carloads at these prices during the week.

New York Dairy Market. NEW YORK, Dec. 3.—Butter, firm; receipts, 2353; creamery specials, 20c; extra, 22c to 23c; third to first, 23c to 24c; creamery held second to special, 24c to 25c; state dairy, common to first, 23c to 25c; process, second to special, 23c to 25c.

CATTLE MARKETS. Hogs Lower at Buffalo, Higher at Chicago—Cattle Steady. NEW YORK, Dec. 3.—Beef—Receipts, 1233; all for slaughter and export; no trade; feeling steady; exports, 334 cattle and 2658 quarters of beef.

Chicago Cash Grain. CHICAGO, Dec. 3.—Cash grain: Wheat—No. 2 red, 92c to 94c; No. 3 red, 91c to 93c; No. 2 hard, 92c to 94c; No. 3 hard, 91c to 93c; No. 1 northern, 94c; No. 2 northern, 91c to 93c; No. 3 northern, 90c to 92c; velvet, 90c to 92c; corn—No. 2, 92c to 94c; No. 2 white, 92c to 94c; No. 3 new, 89c to 91c; No. 3 white, 89c to 91c; No. 3 yellow, new, 89c to 91c; No. 2 white, 91c to 93c; No. 2 white, 91c to 93c; standard, 23c to 24c.

East Buffalo Live Stock. EAST BUFFALO, Dec. 3.—Cattle—Receipts, 100 head; steady; prices unchanged. Hogs—Receipts, 150 head; active and 75c lower; \$6.50 to \$10.25. Hogs—Receipts, 4000 head; active and 5c to 10c lower; heavy and mixed, \$7.00 to \$11.50; yearlings, \$7.00 to \$8.50; \$7.50 to \$7.90; roughs, \$6.75 to \$7.00; stags, \$5.50 to \$6.25; dairies, \$7.50 to \$7.80.

British Cattle Markets. NEW YORK, Dec. 3.—London cables quote American cattle weak at 12c to 13c.

FARM PRODUCE WHOLESALE. Hay, car lots, per ton, \$13.50 to \$15.50. Hay, car lots, No. 2, 7.50 to 8.50. Straw, car lots, per ton, 7.00 to 7.50. Potatoes, car lots, bag, 0.75 to 0.85. Butter separator, dairy, lb., 0.25 to 0.35. Butter, store lots, 0.21 to 0.22. Butter, creamery, lb. rolls, 0.20 to 0.21. Butter, creamery, solids, 0.20 to 0.21. Eggs, new-laid, 0.40 to 0.45. Eggs, old storage, 0.25 to 0.30. Cheese, lb., 0.12 to 0.15. Honeycomb, extra, 2.00 to 2.50. Honey, extracted, lb., 0.10 to 0.11.

Hides and Skins. Prices revised daily by E. T. Carter & Co., 35 East Front street, Dealers in Wool, Hides, Calmfkins and Sheepskins, Itaw Furs, Tallow, etc.

Winnipeg Model Farm. Thoroughbred Bull Calves of both breeds FOR SALE. Write WESTON or ONTARIO.

BLOOR STREET SNAP

For sale, this valuable business block, corner of Bloor and Clinton, consisting of one apartment, eight rooms and bath on second floor, four rooms, bath and large store on ground floor, hot-water heating, sacrifice sale, \$5000; terms arranged. This may be your last opportunity to buy a corner on Bloor-street at such a low figure.

Goulding & Hamilton, 106 Victoria Street

ESTATE NOTICES. NOTICE TO CREDITORS — IN THE Matter of George Thomson of the City of Toronto, deceased. Tailor, Insolvent.

HOUSES TO LET. HOUSING PROBLEM? solved to some extent by our new plan. Call, phone or write The McArthur, Smith Company, established over a quarter century, 34 Yonge.

MARKET GARDENS FOR SALE. The McArthur-Smith Co's List. Land immediately. Snow drifts discouraged. Investigation necessary.

PROPERTIES WANTED. FARM in County York, within radius of ten miles from Toronto. Good cash payment made. Stewart, 54 Victoria.

BUSINESS CHANCES. FOR SALE—First-class hotel, every modern convenience, in heart of business district of Niagara Falls. Will sacrifice if taken at once.

PRINTING. BUSINESS CARDS, wedding announcements, dance party, tally cards, office and business stationery. Adams, 61 Yonge.

ARCHITECTS. GEO. W. GOULDING, Architect, Temple Building, Toronto, Main 4008.

MONEY TO LOAN. AT LOWEST RATES—Private funds on improved property. Wm. Postlethwaite, Room 448, Confederation Life Building.

HOTELS. HOTEL VENDOME, Yonge and Wilton. Central, electric light, steam heat; rates moderate. J. C. Brady.

ART. J. W. L. FORSTER, Portrait Painting, Rooms 24 West King-street, Toronto, edif.

BUTCHERS. THE ONTARIO MARKET, 422 Queen West. John Goebel, College 86, ed.

LEGAL CARDS. BAIRD, McNAHAN & MACKENZIE, Barristers and Solicitors. James Baird, K. C., Crown Attorney, County of York, 100 Adelaide St. East, Toronto, ed.

HERBALIST. TAPE WORM removed in two hours with our medicine. Write for particulars to O. P. Alver, 103 Bay-street, Toronto, edif.

MARRIAGE LICENSES. FRED W. PLETT, Druggist, 503 West Queen. Leading issuer of marriage licenses. Wedding arranged for. Witnesses unnecessary.

HOUSE MOVING. HOUSE MOVING and raising done. J. Nelson, 106 Jarvis-street, ed.

LIVE BIRDS. HOPPE'S BIRD STORE, 160 Queen-street West, Main 489, ed.

CAFE. LUNCH at Orr's Restaurant and party table of the life essentials—pure food, pure air and pure water. Best 25c meals. Special Sunday dinner, 25c. Entrance, 41 Richmond-street East, also at 6 Queen-street East.

BUILDERS' MATERIAL. THE CONTRACTORS' SUPPLY CO., Limited, Main 1234. Crushed stone, 1.25 per ton, on wagons, at Jarvis-street Wharf. ed.

CONTRACTORS. ALL KINDS of alterations, Stone and 4 office fitting done. No delay. A. J. Twizler, 3 Harvard-avenue, Phone Park 128.

ROOFING. GALVANIZED IRON skylights, metal ceilings, cornices, etc. Douglas Bros, 123 Adelaide-street West. ed.

PATENTS. FETHERSTONHAUGH, DENNISON & Co., Star Building, 15 King West, Toronto; also Montreal, Ottawa, Winnipeg, Washington. Patents, domestic and foreign. The Prospective Patentee's mailed free.

HELP WANTED

ATTEND a practical railroad school. A where railroad wires leading from Grand Trunk and Canadian Northern give you the real work, and where the opportunities are better than in anything else. Write, phone or call for particulars, Dominion School Telegraphy, 91 Queen East, Toronto. edif.

GENERAL SERVANT, where cook is ready. Apply between 8 and 9 p.m. Church of England Deaconess House, 119 Gerrard East.

MAN WANTED—Must be willing to learn and capable of acting as our representative, no canvassing or soliciting; good income assured. Address: National Co-operative Realty Co., 1200 Market Building, Washington, D.C.

MEN WISHING return passage, England or Scotland, apply to F. Parks, worth, 118 Queen West.

WANTED—A number of young women for special work. Must be attractive, neat in appearance and well educated. Apply National Sanitarium Association, 27 King-street West.

WANTED—Young man to learn the brokerage business. Apply Simcoe, 11 King West.

WANTED—Scale makers. Apply in person or by letter to The Burrow, Stewart & Milne Co., Ltd., Hamilton, Ont. ed.

TEACHERS WANTED. FEMALE TEACHER wanted for Junior Division of S.S. No. 10, Markham Township. State salary and qualifications apply to Alex. Russell, Unionville P.O., Ont.

TEACHERS WANTED—For S. No. 6, Pickering; duties to begin on the 3rd of January, 1911. Salary, \$400 per year. Thos. A. Knox, Secretary, Brock Road E. O., Ont.

FOR SALE—One double type case frame and eleven type cases, nearly new. Apply Superintendent of World Office.

CASH REGISTER—Handsome nickel-plated, detail address: Registers one dollar to \$20; 1-year guarantee; quick sale price \$50. Box 14, Toronto World.

CHARLES DICKENS' NOVELS, 2 volumes, 18 illustrations, silk cloth, plain paper; caped; price \$4.50. Box 98, edif.

GREEN MANURE delivered to cover foundations, lean land or car lot. Nelson, 106 Jarvis-street, edif.

FIVE HUNDRED neatly printed cards, billheads or doggers, one dollar. Tele. phone, Barnard, 25 Dundas, edif.

MANURE and loam for lawns and gardens. J. Nelson, 106 Jarvis-street, edif.

Accommodation still vacant in all classes on above steamers. For full particulars apply to H. G. THORLEY, Passenger Agent for Ontario at KING ST. E., TORONTO.

Pacific Mail Steamship Company. TOYO KISEN KAISHA CO. Hawaii, Japan, China, Philippines, Islands, Straits Settlements, India and Australia.

SAILINGS FROM SAN FRANCISCO. Siberia, Dec. 20. China, Dec. 23. Canada, Dec. 26. Particulars apply to M. MELVILLE, Canadian Passenger Agent, Toronto, 1361.

EUROPE TICKETS. For Christmas Holidays. by the principal Steamship Lines from New York, Boston, Montreal, Quebec, St. John and Portland. Secure your passages at the old reliable agency of

A. F. WEBSTER & CO. Northeast Corner King and Yonge Sts.

EXCURSION TO \$95 MEXICO \$95 EXCURSION TO \$70 NASSAU \$70. This is one of the cheapest trips of the season. Excellent service and beautiful scenery. 41 days via Elder, S. J. Sharp, Western Mgt., 15 Adelaide St. East, Main 702.

INLAND NAVIGATION. Northern Navigation Company, Limited. SAILINGS from Sarnia for S.S. Marie, Port Arthur and Fort William every Monday Wednesday and Saturday at 1.30 p.m. SAILINGS from Collingwood 1.30 p.m., Owen Sound 11.45 p.m., Wednesday and Saturday or S.S. Marie and Georgian Bay Ports. Information from Railway Ticket Agents or the Company at Sarnia or Collingwood.

PASSENGER TRAFFIC.

Canadian Pacific Railway

Improved Service from North Toronto to MONTREAL AND OTTAWA

Leave North Toronto 9:15 p.m. Leave West Toronto 9:30 p.m. Arrive North Toronto 10:00 p.m. Leave North Toronto 10:00 p.m. Daily, except Sunday. Will stop at Westmount.

Arrive at Montreal 7:00 a.m. Arrive Ottawa 6:50 a.m. Passengers may remain in sleeping cars until 8:00 a.m. Take northbound Yonge street car direct to North Toronto Station.

FROM UNION STATION TO MONTREAL AND OTTAWA. 10:30 a.m. Daily. All night trains carry Canadian Pacific Standard sleeping cars for both cities.

Smooth Roadbed Convenient Stations Unexcelled Equipment Attentive Porters City Ticket Office—S. E. Cor. King and Yonge Sts.

NEW YORK EXCURSION

DECEMBER 8th \$14.25 from TORONTO

VIA CANADIAN PACIFIC or GRAND TRUNK RAILWAYS and ERIE RAILROAD

Secure your tickets and reservations to-day from AGENTS C. P. R. or GRAND TRUNK RAILWAY 241213.

WHITE STAR Dominion Line

Royal Mail Steamers \$15.25 Return

Special Xmas Sailings

Portland to Liverpool. MAKING CALL AT HALIFAX. SE. LAURENTIC, DEC. 2. S.S. CANADIAN, DAILY 4. 7.15 and 9 a.m., 5.30 and 10.10 p.m. ONLY DOUBLE-TRACK ROUTE.

Full particulars at City Office, northwest corner King and Yonge Streets. Phone Main 4205. 1361.

INTERCOLONIAL RAILWAY

WINTER SERVICE 1910-11

MARITIME EXPRESS

Leaves Bonaventure, Union Station, Montreal, 12 Noon, Daily except Saturday, for QUEBEC ST. JOHN, N.S. HALIFAX, N.S.

Most Comfortable Train in America. TABLE D'HOTEL MEALS. Breakfast 7c. Luncheon 7c. Dinner \$1.00.

THE ONLY ALL CANADIAN ROUTE. Toronto Ticket Office, 41 King St. East. King Edward Hotel Block.

CANADIAN NORTHERN ATLANTIC ROYALS

GO HOME FOR CHRISTMAS

The new giant twin-screw Rotterdam, 24,175 tons register, one of the largest marine leviathans of the world. LEFT HAND TOP CORNER. R. M. MELVILLE, General Passenger Agent, Toronto, Ont.

OCEAN STEAMSHIP PASSAGES

Booked for American, Canadian, Atlantic and Pacific services. R. M. MELVILLE, General Agent, Cap. Toronto and Adelaide Street, Toronto and Phone Main 2916.

ATLANTIC CITY HOTELS.

HOTEL DEVILLE. The hotel for comfort, sea and beach. The hotel for comfort, sea and beach. The hotel for comfort, sea and beach. The hotel for comfort, sea and beach.

Hotel for comfort, sea and beach. The hotel for comfort, sea and beach. The hotel for comfort, sea and beach. The hotel for comfort, sea and beach.

Hotel for comfort, sea and beach. The hotel for comfort, sea and beach. The hotel for comfort, sea and beach. The hotel for comfort, sea and beach.

Hotel for comfort, sea and beach. The hotel for comfort, sea and beach. The hotel for comfort, sea and beach. The hotel for comfort, sea and beach.

ESTATE NOTICES

NOTICE TO CREDITORS — IN THE Matter of George Thomson of the City of Toronto, deceased. Tailor, Insolvent.

Notice is hereby given that the above-named insolvent has made an assignment of his estate to me for the benefit of his creditors, under the E.S.O., 1910, Chapter 64.

The creditors are notified to meet at my office, McKinnon Building, Toronto, on Tuesday, the 6th day of December, 1910, at 2 o'clock p.m., for the purpose of receiving a statement of his affairs, for the appointing of inspectors for the settling of fees, and for the ordering of the assets of the estate generally.

All persons claiming to rank upon the estate of the insolvent must file their claims, proved by affidavit, with me on or before the 15th day of December, 1910, which day I will proceed to distribute the assets of the estate among those claimants who claim only of which I shall then have received notice.

JAMES H. LANGLEY, F.C.A., Trustee, McKinnon Building, Toronto, Dec. 2, 1910.

Notice of Application for Divorce

Notice is hereby given that Frances Whittington Truesdell of the City of Toronto, in the County of York, in the Province of Ontario, do hereby apply to the Parliament of Canada for a bill of divorce from her husband, Henry Truesdell, formerly of the said City of Toronto, and Province of Ontario, and now residing in the County of Lincoln, in the Province of Ontario, fruit grower.

The grounds of the said application are: That the said Henry Truesdell, her husband, has been guilty of adultery and cruelty.

By her Solicitors, KILMER, McANULTY & IRVING, 10 Adelaide St. East, Toronto, Ontario, this 24th day of November, 1910.

NOTICE IS HEREBY GIVEN THAT Gertrude Mary Grantham of the City of Toronto, in the County of York, in the Province of Ontario, will apply to the Parliament of Canada at the next session thereof for a bill of divorce from her husband, Arthur Miles Grantham of the City of Toronto, in the County of York, and Province of Ontario, contractor, on the ground of adultery and cruelty.

By her Solicitors, KILMER, McANULTY & IRVING, 10 Adelaide St. East, Toronto, Ontario, this 7th day of October, 1910.

12 1/2c per lb.; refrigerator beef, at 9 1/2c to 10c per lb.

UNION STOCK YARDS. There are 17 carloads of live stock, about 100 cars of which are for sale at Monday's market. The receipts consist of 260 cattle, 24 hogs, 180 sheep and lambs and 23 calves.

New York Metal Prices. NEW YORK, Dec. 3.—The metal market was quiet and unchanged. Tin, \$4.75 to \$4.80; copper, \$12.12 1/2; lead, \$9.10 to \$9.15; spelter, \$12.10; iron, steady.

Broomhall's Cable. LIVERPOOL, Dec. 3.—The market was influenced at opening by the disappointing American cables, in the face of the extremely bullish American crop advices and values were lower. Following the opening there was a period of dullness and a further slight recovery occurred. Later, however, there was active covering by shorts with offerings lighter and prices advanced. This support was due to a steady Plata offers, expectations of higher winter shipments this week and a good consignment of inquiry for Pacific Coast cargoes. Parts markets were firm with less favorable weather and crop work.

France—Our agent at Paris cables that the Institute will hold their regular meeting this evening at the Institute building, 198 College-street. George Cornish of the University Schools will give an address on "The Nature Study Movement, Its History and Development." The public are cordially invited.

Nature Study. The natural history section of the Canadian Institute will hold their regular meeting this evening at the Institute building, 198 College-street. George Cornish of the University Schools will give an address on "The Nature Study Movement, Its History and Development." The public are cordially invited.

Coronation March Prize. LONDON, Dec. 4.—The freedom of the City of London has been conferred upon the composer of the best coronation march for the coronation of King George V. The prize is £500. The coronation march is "The Coronation March" by Sir Edward Elgar.

YOUTH KILLED. PORT COLBORNE, Ont., Dec. 4.—Asa Reusch, aged 15, employed by the Empire Limestone Company, was fatally injured while trying to thaw out a gas pipe. The valve blew out, striking him on the forehead, fracturing his skull.

YOUTH KILLED. PORT COLBORNE, Ont., Dec. 4.—Asa Reusch, aged 15, employed by the Empire Limestone Company, was fatally injured while trying to thaw out a gas pipe. The valve blew out, striking him on the forehead, fracturing his skull.

YOUTH KILLED. PORT COLBORNE, Ont., Dec. 4.—Asa Reusch, aged 15, employed by the Empire Limestone Company, was fatally injured while trying to thaw out a gas pipe. The valve blew out, striking him on the forehead, fracturing his skull.

YOUTH KILLED. PORT COLBORNE, Ont., Dec. 4.—Asa Reusch, aged 15, employed by the Empire Limestone Company, was fatally injured while trying to thaw out a gas pipe. The valve blew out, striking him on the forehead, fracturing his skull.

YOUTH KILLED. PORT COLBORNE, Ont., Dec. 4.—Asa Reusch, aged 15, employed by the Empire Limestone Company, was fatally injured while trying to thaw out a gas pipe. The valve blew out, striking him on the forehead, fracturing his skull.

PASSENGER TRAFFIC.

Canadian Pacific Railway

Improved Service from North Toronto to MONTREAL AND OTTAWA

Leave North Toronto 9:15 p.m. Leave West Toronto 9:30 p.m. Arrive North Toronto 10:00 p.m. Leave North Toronto 10:00 p.m. Daily, except Sunday. Will stop at Westmount.

Arrive at Montreal 7:00 a.m. Arrive Ottawa 6:50 a.m. Passengers may remain in sleeping cars until 8:00 a.m. Take northbound Yonge street car direct to North Toronto Station.

FROM UNION STATION TO MONTREAL AND OTTAWA. 10:30 a.m. Daily. All night trains carry Canadian Pacific Standard sleeping cars for both cities.

Smooth Roadbed Convenient Stations Unexcelled Equipment Attentive Porters City Ticket Office—S. E. Cor. King and Yonge Sts.

NEW YORK EXCURSION

DECEMBER 8th \$14.25 from TORONTO

VIA CANADIAN PACIFIC or GRAND TRUNK RAILWAYS and ERIE RAILROAD

Secure your tickets and reservations to-day from AGENTS C. P. R. or GRAND TRUNK RAILWAY 241213.

WHITE STAR Dominion Line

Royal Mail Steamers \$15.25 Return

Special Xmas Sailings

Portland to Liverpool. MAKING CALL AT HALIFAX. SE. LAURENTIC, DEC. 2. S.S. CANADIAN, DAILY 4. 7.15 and 9 a.m., 5.30 and 10.10 p.m. ONLY DOUBLE-TRACK ROUTE.

Full particulars at City Office, northwest corner King and Yonge Streets. Phone Main 4205. 1361.

INTERCOLONIAL RAILWAY

WINTER SERVICE 1910-11

MARITIME EXPRESS

Leaves Bonaventure, Union Station, Montreal, 12 Noon, Daily except Saturday, for QUEBEC ST. JOHN, N.S. HALIFAX, N.S.

Most Comfortable Train in America. TABLE D'HOTEL MEALS. Breakfast 7c. Luncheon 7c. Dinner \$1.00.

THE ONLY ALL CANADIAN ROUTE. Toronto Ticket Office, 41 King St. East. King Edward Hotel Block.

CANADIAN NORTHERN ATLANTIC ROYALS

GO HOME FOR CHRISTMAS

The new giant twin-screw Rotterdam, 24,175 tons register, one of the largest marine leviathans of the world. LEFT HAND TOP CORNER. R. M. MELVILLE, General Passenger Agent, Toronto, Ont.

OCEAN STEAMSHIP PASSAGES

Booked for American, Canadian, Atlantic and Pacific services. R. M. MELVILLE, General Agent, Cap. Toronto and Adelaide Street, Toronto and Phone Main 2916.

ATLANTIC CITY HOTELS.

HOTEL DEVILLE. The hotel for comfort, sea and beach. The hotel for comfort, sea and beach. The hotel for comfort, sea and beach. The hotel for comfort, sea and beach.

Hotel for comfort, sea and beach. The hotel for comfort, sea and beach. The hotel for comfort, sea and beach. The hotel for comfort, sea and beach.

Hotel for comfort, sea and beach. The hotel for comfort, sea and beach. The hotel for comfort, sea and beach. The hotel for comfort, sea and beach.

Hotel for comfort, sea and beach. The hotel for comfort, sea and beach. The hotel for comfort, sea and beach. The hotel for comfort, sea and beach.



ANGER TRAFFIC. Railway Toronto to OTTAWA 9.15 p.m. 9.30 p.m. 10.00 p.m. Toronto Station. L AND OTTAWA 1.30 p.m. Daily. Sleeping cars for both. Passenger Stations and Porters and Yonge Sts. BOSTON 8th ONTARIO RAILWAYS and AILWAY 346123. 5 Return via Montreal, Friday. Limit Dec. 23. Prospects for certain other points. The only per Toronto to Boston, daily. MONTREAL TRAINS 4 BUL-TRACK ROUTE. CARS at City Office, 100 King and Yonge. Main 4205. COLONIAL MILWAY. ER SERVICE 910-11. BRITIME PRESS. onaventure, Union Montreal, 12 Noon, opt Saturday, for EBEC JOHN, N.B. JOHNS, N.S. Stable Train in America. D'ROTE MEALS Luncheon 75c. Dinner \$1.00. ALL CANADIAN ROUTE. (Office, at King St. East, Edward Hotel Block. AN NORTHERN ATLANTIC ROYALS. HOME FOR CHRISTMAS. Sellings: Edward, December 7th, George, December 14th. an Northern Wharfedale, Limited, and Toronto Sts. 118. -AMERICA LINE. New Steamers of 12,500 tons. PLYMOUTH, BOULOGNE, ROTTERDAM. Christmas Sellings, as per sailing list. 1. BYRON. 2. POTSDAM. 3. NEW AMSTERDAM. Christmas Sellings, as per sailing list. 4. MELVILLE. 5. POP CORNER. 6. TORONTO. 7. MELVILLE. 8. AMSHIP PASSAGES. American, Canadian, and other services. MELVILLE. cent. Cor. Toronto and streets, Toronto. Phone

### LITTLE NIP SHIP FROM AL THREE LEVELS

Car of High Grade Recently Shipped Ran Between 2000 and 2500 Ounces—Stopping on 285 Foot. From Cobalt Daily Nugget, Dec. 2: In addition to the high grade car that the Little Nipissing has just shipped, there should be a good reserve between the two bottom levels. Stopping has just been commenced at the 285 foot level. It was in drifting on the vein back to the shaft from the shaft. There is a distance of about 800 feet between the shaft and the

ON WALL STREET. J. P. Bickell & Co. say at the close of the market: The dominant characteristic of the market today was the resistance to several bids by room traders and the immediate recovery of attacked securities. There were several rallies which carried prices down to 15 per cent. At the close of the day, the market was in a state of confusion. The actual figures showed a decrease in the aggregate value of \$2,600,000, loans increased \$1,270,000 and the cash loss was \$1,330,000. The market has reached the stage after a week of substantial rally at least. The short interest is believed to be very heavy, particularly in the standard stocks and we have good reason to believe that this short interest will be sufficient to prevent a recovery on Monday for at least a good rally, and it ought to be a quick one. The technical point in the situation is that large blocks of stocks have been sold this week into the strongest hands.

NEW YORK BANK STATEMENT. NEW YORK, Dec. 2.—The statement of clearing house banks for the week ending Dec. 2 shows that the banks hold \$11,877,000 more than the requirements of the 25 per cent. reserve. This is a decrease of \$6,321,000 in the proportionate cash reserve, as compared with last week. Following is the statement: Daily averages—Loans, increase, \$14,661,000; deposits, increase, \$11,671,000; circulation, decrease, \$115,000; specie, decrease, \$2,700,000; legal tenders, decrease, \$702,000; reserve, decrease, \$3,672,000; reserve required, increase, \$2,919,000; surplus, decrease, \$6,287,000; U.S. deposits, decrease, \$4,281,000; clearing house banks' actual condition this day: Loans, increase, \$13,571,000; deposits, increase, \$12,919,000; specie, decrease, \$1,050,000; legal tenders, decrease, \$2,150,000; reserve, increase, \$10,500,000; reserve required, decrease, \$2,082,000; surplus, decrease, \$12,821,000; U.S. deposits, decrease, \$12,628,000; state banks and trust companies of New York, increase, \$2,700,000; clearing house: Loans, increase, \$2,850,000; specie, decrease, \$1,150,000; legal tenders, increase, \$150,000; total deposits, increase, \$7,375,000.

National Banks' Statement. WASHINGTON, Dec. 2.—The report of the National Bank of the United States in answer to the call of Nov. 16, shows a decrease in loans and discounts of \$16,500,000, a decrease in cash of \$20,000,000 and a gain of individual deposits of \$180,000,000. The total reserve was an average of 21.18 per cent., which was \$75,000,000 above the amount required by law.

Statistical Position Improved. Samuel Montagu & Co., London, Eng., under date of Nov. 29, state: Silver—After the issue of our last circular, prices showed some indications of recovery, but the depression carried the cash price down to 25 7/16 to-day, the lowest quotation for nearly six weeks, but the market did not get better, after announcements at the setback. The cause of the depression here is that the China demand has been closed off from that quarter for Shanghai and Hongkong. It can be inferred that the statistical position is somewhat improved from the fact that prices are in such request as to call for a change, and that the market operation will represent so much metal permanently withdrawn from existent stocks.

London Stock Market. LONDON, Dec. 3.—The political situation commands much attention and is checked speculative commitment on the stock exchange, but the market was remarkably firm during the week on good news of business and the very noticeable reduction in the bank rate shadowing the return of easier monetary conditions. The speculative holding in Bombay, after deducting the dividend, partly on the optimistic views expressed as to the Union prospects in the streets. Here falls advanced in response to good traffic and higher net earnings, while foreign bonds, especially Japanese, Russian and Argentine, rose sharply on continental buying, following the bank rate reduction. American securities lost ground during the week. The dealings here were re-

### THE Sterling Bank OF CANADA

HEAD OFFICE TORONTO

BRANCHES IN TORONTO

MAIN OFFICE—Cor. King and Bay Sts. COLLEGE STREET—Cor. Adelaide and Simco. COLLEGE STREET—Cor. College and Grace Streets. PARKDALE—Cor. Queen and Cleeve Ave. WEST TORONTO—Cor. Dundas and Keele Streets.

### Toronto Stocks

Stock	Dec. 2	Dec. 1
Amal. Asbestos	112 1/2	112 1/2
Black Lake	112 1/2	112 1/2
do. common	112 1/2	112 1/2
B. C. Packers	87 1/2	87 1/2
do. B.	87 1/2	87 1/2
do. common	87 1/2	87 1/2
Bell Telephone	142 1/2	142 1/2
Burt F. N. Co.	102 1/2	102 1/2
do. preferred	102 1/2	102 1/2
Can. Cement	23 1/2	23 1/2
do. preferred	23 1/2	23 1/2
C. C. & F. Co.	82 1/2	82 1/2
do. preferred	82 1/2	82 1/2
Can. Gen. Electric	102 1/2	102 1/2
C. P. R.	102 1/2	102 1/2
Canadian Salt	102 1/2	102 1/2
City Dairy	28 1/2	28 1/2
do. preferred	28 1/2	28 1/2
Consumers' Gas	72 1/2	72 1/2
do. preferred	72 1/2	72 1/2
Detroit United	24 1/2	24 1/2
Dom. Coal	62 1/2	62 1/2
do. preferred	62 1/2	62 1/2
Dom. Steel Corp.	102 1/2	102 1/2
do. preferred	102 1/2	102 1/2
Dom. Telegraph	102 1/2	102 1/2
Elec. Dev. pref.	102 1/2	102 1/2
Hilltop pref.	102 1/2	102 1/2
do. preferred	102 1/2	102 1/2
London Electric	102 1/2	102 1/2
Mackay common	82 1/2	82 1/2
do. preferred	82 1/2	82 1/2
Maple Leaf com.	42 1/2	42 1/2
do. preferred	42 1/2	42 1/2
Mexican Tramway	82 1/2	82 1/2
Monetary pref.	72 1/2	72 1/2
M.S.P. & S.S.M.	102 1/2	102 1/2
Nipissing	102 1/2	102 1/2
Northern Nav.	112 1/2	112 1/2
N. S. Steel	102 1/2	102 1/2
Nipissing Mines	102 1/2	102 1/2
do. preferred	102 1/2	102 1/2
Penman common	62 1/2	62 1/2
do. preferred	62 1/2	62 1/2
Porto Rico Ry.	62 1/2	62 1/2
Quebec L. H. & P.	62 1/2	62 1/2
Rio Janeiro	102 1/2	102 1/2
Rogers common	202 1/2	202 1/2
do. preferred	202 1/2	202 1/2
St. Lawrence	102 1/2	102 1/2
Sao Paulo Tram.	102 1/2	102 1/2
S. Wheat com.	62 1/2	62 1/2
Toronto Electric Light	112 1/2	112 1/2
Toronto Railway	102 1/2	102 1/2
Twin City	102 1/2	102 1/2
Winnipeg Ry.	102 1/2	102 1/2
Chown Reserve	2 1/2	2 1/2
La Rose	4 1/2	4 1/2
Nipissing	102 1/2	102 1/2
Truettney	122 1/2	122 1/2

Official Crop Returns. OTTAWA, Dec. 2.—The official bulletin, just to hand, shows that the aggregate data collected by the International Agricultural Institute for the last November for all the countries reporting from the Northern Hemisphere, indicate that the yield of wheat on an acreage of six per cent. larger, is practically the same as reported last year. The reduction from last month's aggregate production is four per cent. The aggregate crop is 97 per cent of last year's production; barley, 96 per cent; oats, 91 per cent.

### FOREIGN EXCHANGE.

Country	Rate
Glazebrook & Cronyn, James Building	
—Banks—	
London	102 1/2
Paris	102 1/2
—Exchange—	
London	102 1/2
Paris	102 1/2

### BRITISH CONSOLS.

Consols	Rate
Consols, for money	74 1/2
Consols, for account	74 1/2

### New York Cotton Market.

Contract	Rate
Dec. 2	14.80
Jan. 1	14.80
Feb. 1	14.80
Mar. 1	14.80
Apr. 1	14.80
May 1	14.80
Jun. 1	14.80
Jul. 1	14.80
Aug. 1	14.80
Sep. 1	14.80
Oct. 1	14.80
Nov. 1	14.80
Dec. 1	14.80

### Montreal Stocks

Stock	Rate
Amal. Asbestos	112 1/2
Black Lake	112 1/2
do. common	112 1/2
B. C. Packers	87 1/2
do. B.	87 1/2
do. common	87 1/2
Bell Telephone	142 1/2
Burt F. N. Co.	102 1/2
do. preferred	102 1/2
Can. Cement	23 1/2
do. preferred	23 1/2
C. C. & F. Co.	82 1/2
do. preferred	82 1/2
Can. Gen. Electric	102 1/2
C. P. R.	102 1/2
Canadian Salt	102 1/2
City Dairy	28 1/2
do. preferred	28 1/2
Consumers' Gas	72 1/2
do. preferred	72 1/2
Detroit United	24 1/2
Dom. Coal	62 1/2
do. preferred	62 1/2
Dom. Steel Corp.	102 1/2
do. preferred	102 1/2
Dom. Telegraph	102 1/2
Elec. Dev. pref.	102 1/2
Hilltop pref.	102 1/2
do. preferred	102 1/2
London Electric	102 1/2
Mackay common	82 1/2
do. preferred	82 1/2
Maple Leaf com.	42 1/2
do. preferred	42 1/2
Mexican Tramway	82 1/2
Monetary pref.	72 1/2
M.S.P. & S.S.M.	102 1/2
Nipissing	102 1/2
Northern Nav.	112 1/2
N. S. Steel	102 1/2
Nipissing Mines	102 1/2
do. preferred	102 1/2
Penman common	62 1/2
do. preferred	62 1/2
Porto Rico Ry.	62 1/2
Quebec L. H. & P.	62 1/2
Rio Janeiro	102 1/2
Rogers common	202 1/2
do. preferred	202 1/2
St. Lawrence	102 1/2
Sao Paulo Tram.	102 1/2
S. Wheat com.	62 1/2
Toronto Electric Light	112 1/2
Toronto Railway	102 1/2
Twin City	102 1/2
Winnipeg Ry.	102 1/2
Chown Reserve	2 1/2
La Rose	4 1/2
Nipissing	102 1/2
Truettney	122 1/2

### IMPERIAL BANK OF CANADA

Capital Authorized \$10,000,000.00  
Capital Subscribed 5,000,000.00  
Capital Paid Up 5,000,000.00  
Reserve Fund 5,000,000.00

Drafts, Money Orders and Letters of Credit Issued. Available in any part of the world. Special attention given to collections. A branch of the Bank has been opened at Porcupine, Ontario, under the management of W. Doury, formerly of Gowganda and Cobalt Branches.

WALL STREET POINTERS. Congress meets on Monday. Banks lost \$5,817,000 on week's currency movement. LONDON—Bank of England bought \$15,000 gold bars in open market. B. F. Youkin says there should be no fear of a disastrous falling in the business of the country and reports real property in the south-west. U. S. Steel blast furnaces now running about 50 per cent. of capacity, as against 60 per cent. three weeks ago. Idle cars for fortnight ended Nov. 22 were 25,383, an increase of 100 per cent. from previous report.

SAVANNAH, Ga.—Grand Jury indicts Atlantic Coast Line and Seaboard for alleged bribery. Dun's Review says business in fair proportions, and economic conditions in the main are satisfactory. Bradstreet says collections are slow to grade, and relatively best in the south. Joseph says: The rank and file of operators continues to hold. To-day, not very much is looked for. A repetition of yesterday's speculation perhaps, intrinsically, Pennsylvania, Reading, Lehigh Valley and St. Paul are worth more than selling prices. Speculative-Distillers may be taken hold of. Average Rock Island and Tractations.

Cotton Gossip. Erickson Perkins & Co. had the following at the close: Analysis of the Giles report suggested an over-estimate, and there was less disposition to part with holdings at a concession. As a result prices firmed up, with business comparatively quiet. Unusually favorable conditions for the picking and marketing of cotton have convinced many that the percentage gained to day will be close to that of the past two years, and they will take advantage of 100,000 or over to make a 10,000-bale crop possible. We are now Electric Development, Gas and New York Central all appear to us to be getting in shape to rally, but we think they will be sold on rallies of good extent. Steel may rally, but still we think it will be vulnerable—Financial Bulletin.

### COBALT ORE SHIPMENTS

Company	Shipments
Beaver	54,100
Buffalo	61,600
McKinley-Darragh	2,238,472
Nipissing	1,506,700
O'Brien	1,179,800
Provincial	62,500
Right-of-Way	30,480
Rocheater	60,780
St. Lawrence	22,600
Standard Cobalt	25,841
Timiskaming	1,972,800
Truettney	1,900,800
Waldman	49,200
Wyandott	48,900

Little Nip has shipped high-grade ore and will ship again next week. Buy Little Nipissing and Hold It. CALL AND SEE US AND WE WILL GIVE YOU OUR REASONS FOR THIS ADVICE. CANNON AND REED. Members Dominion Stock Exchange. Telephone Main 1416. 14 King Street East.

### COBALT STOCKS

### PRICE OF SILVER.

Item	Price
Bar silver in London	25 1/2 oz.
Bar silver in New York	25 1/2 oz.
Mexican dollars	46

### Standard Stock and Mining Exchange

Stock	Rate
Amalgamated	27 1/2
Beaver	54 1/2
Buffalo	61 1/2
McKinley-Darragh	2,238 1/2
Nipissing	1,506 1/2
O'Brien	1,179 1/2
Provincial	62 1/2
Right-of-Way	30 1/2
Rocheater	60 1/2
St. Lawrence	22 1/2
Standard Cobalt	25 1/2
Timiskaming	1,972 1/2
Truettney	1,900 1/2
Waldman	49 1/2
Wyandott	48 1/2

### COBALT STOCKS

Stock	Rate
Beaver	54 1/2
Buffalo	61 1/2
McKinley-Darragh	2,238 1/2
Nipissing	1,506 1/2
O'Brien	1,179 1/2
Provincial	62 1/2
Right-of-Way	30 1/2
Rocheater	60 1/2
St. Lawrence	22 1/2
Standard Cobalt	25 1/2
Timiskaming	1,972 1/2
Truettney	1,900 1/2
Waldman	49 1/2
Wyandott	48 1/2

COBALT STOCKS. Orders executed on all leading exchanges. We invite correspondence. 14 KING STREET E. TORONTO. USSHNER, STRATHY & CO. 47-51 King Street West. COBALT STOCKS. Orders executed on all leading exchanges. We invite correspondence. 14 KING STREET E. TORONTO.

COBALT STOCKS. Orders executed on all leading exchanges. We invite correspondence. 14 KING STREET E. TORONTO. USSHNER, STRATHY & CO. 47-51 King Street West. COBALT STOCKS. Orders executed on all leading exchanges. We invite correspondence. 14 KING STREET E. TORONTO.

COBALT STOCKS. Orders executed on all leading exchanges. We invite correspondence. 14 KING STREET E. TORONTO. USSHNER, STRATHY & CO. 47-51 King Street West. COBALT STOCKS. Orders executed on all leading exchanges. We invite correspondence. 14 KING STREET E. TORONTO.

COBALT STOCKS. Orders executed on all leading exchanges. We invite correspondence. 14 KING STREET E. TORONTO. USSHNER, STRATHY & CO. 47-51 King Street West. COBALT STOCKS. Orders executed on all leading exchanges. We invite correspondence. 14 KING STREET E. TORONTO.

COBALT STOCKS. Orders executed on all leading exchanges. We invite correspondence. 14 KING STREET E. TORONTO. USSHNER, STRATHY & CO. 47-51 King Street West. COBALT STOCKS. Orders executed on all leading exchanges. We invite correspondence. 14 KING STREET E. TORONTO.

COBALT STOCKS. Orders executed on all leading exchanges. We invite correspondence. 14 KING STREET E. TORONTO. USSHNER, STRATHY & CO. 47-51 King Street West. COBALT STOCKS. Orders executed on all leading exchanges. We invite correspondence. 14 KING STREET E. TORONTO.

### Drafts on Foreign Countries

EVERY BRANCH OF The Canadian Bank of Commerce is equipped to issue on application Drafts on the principal cities of the world. These drafts are drawn in the currency of the country in which the drafts are payable, i.e., drafts on France are drawn payable in francs, etc.

TO RENT. \$16.00—House containing six rooms, bath, furnace, recently decorated throughout, immediate possession, stable in rear. For full particulars apply to A. M. CAMPBELL, 12 Richmond Street East. Telephone Main 2351.

BROKER AND MINING EXPERT. J.A. McILWAIN & CO. 41 Scott St. Tel. 313. FLEMING & MARVIN. PORCUPINE CLAIMS Bought and Sold. Cobalt and New York Stocks. S. J. WILSON. STOCK BROKER. Member Dominion Exchange, Limited (COBALT AND UNLISTED SECURITIES). Main office, 14 King St. E.

Gormally, Tilt & Co. Members Standard Stock and Mining Exchange. 32-34 ADELAIDE ST. E. Cobalt and Unlisted Securities. Telephone Main 7505, Toronto. J.M. WILSON & CO. Members Dominion Exchange. Cobalt Stocks. Orders executed on all leading exchanges. We invite correspondence. 14 KING STREET E. TORONTO.

USSHNER, STRATHY & CO. 47-51 King Street West. COBALT STOCKS. Orders executed on all leading exchanges. We invite correspondence. 14 KING STREET E. TORONTO. LORSCH & CO. Members Standard Stock Exchange. COBALT STOCKS, UNLISTED SECURITIES. Tel. M. 7417. 36 Toronto St.

NOTICE. Under the provisions of the Ontario Companies Act, the Fairbanks Consolidated Mining Company, Limited, hereby gives public notice that it has applied to His Honor the Lieutenant-Governor of Ontario in Council for the acceptance of the surrender of its charter on and from the 15th day of December, 1910. Dated at Toronto this 2nd day of December, 1910. (Sgd) GEORGE CLAY, Secretary.

TAKE NOTICE. That the LONDON & LANCASTER GUARANTEE & ACCIDENT COMPANY OF CANADA has received a license to transact the business of Fire and Marine Insurance throughout Canada. Dated at Toronto this 19th day of November, 1910. W. FITZGERALD, Superintendent of Insurance.

Companies Incorporated and Stocks and Bonds Bought and Sold. Correspondence in All Financial Centres. INDUSTRIAL FINANCIAL CO. Members Dominion Stock Exchange and Toronto Board of Trade. 18 Toronto Street, Toronto, Can. A.E. OSLER & CO.'Y 18 KING STREET WEST. Cobalt Stocks. DIRECT PRIVATE WIRES TO COBALT. Phone 1434-7400.

ENGLISH'S, Limited. Members Dominion Exchange. STOCK BROKERS. 48 Victoria Street. Phone Main 4223. W.T. CHAMBERS & SON. Members Standard Stock and Mining Exchange. COBALT STOCKS. 25 Colborne St. 617 Main 1002. BARKER & BARKER. Members Dominion Stock Exchange. MINING STOCKS. LISTED AND UNLISTED SECURITIES. Tel. N. 2960. 65 14 King St. East. FUNKLUNF LEGAL CARDS. G. & G. GRAY, Barristers, Notaries at Law, Porcupine and Matheson, Main office, 100 Lumsden Building, Toronto, Ont. GOWGANDA LEGAL CARDS. H. F. WILLIAMS, Barrister, Solicitor, 100 Lumsden Building, Toronto, Ont. (Successor to McFadden & McFadden).



Weather Winds increasing to gales from the east, cold and snow

# Tomorrow at the Simpson Store

Store Closes 5.30 P.M.

H. H. FITZGER, PRESIDENT.

TORONTO MONDAY, DECEMBER 5.

J. WOOD, MANAGER



## Dresses Marked at Half-a-Hundred Dollars

Will be Offered To-morrow for \$18.95  
There are only fifty-five of them—none are worth less than twenty-five, and some as much as fifty dollars. One-piece dresses, some walking lengths, others with short trains. They are made of chiffon broadcloths, all-wool cashmere, fine French serges and Henriettas, light weight French Venetians—all the materials now most in vogue. Dainty yokes of handsome lace; waists trimmed with silk braid or ornaments.  
No idea can be formed of these charming dresses unless you see them. They're in the most desirable colors. Tuesday's price \$18.95.

**WOMEN'S WINTER COATS.**  
A special lot of Women's High-class Winter Coats of splendid quality of kersey and beaver cloths, fine broadcloths, diagonal and all-wool serges and diagonal worsteds, made in a great variety of single and double-breasted semi-fitting styles, full length, with shawl, collar, roll or tailored mannish collars, trimmed with braids, velvets, clippings of self or fancy silk. These coats sold regularly at prices ranging from \$28.00 to \$35.00. Special Tuesday \$16.75.

**SOME WAISTS AT 98c.**  
We are very cramped for room to show our new Xmas models, therefore odd tables of wool waists at \$1.95, cashmeres at \$1.48, vesting at \$1.75 and \$1.95, and two tables of mixed wash waists are all cut down to one figure. Tuesday 98c.

## Special Inducements for You to Come Here for Women's Underwear Tuesday

We have good reasons for these radical price cuts on this fine underwear. Reasons that don't affect you or the wear or appearance of the garments. Lines that become size-broken have no place here.

**Women's Corset Covers,** heavy ribbed white or natural cotton, high neck, long or no sleeves; sizes 22 to 40 bust measure; clearing four lines. Regular prices 25c and 35c each. Tuesday, each 18c.

**Women's Corset Covers,** heavy white or natural ribbed wool and cotton mixture, or all-wool, high neck, long or no sleeves; sizes 22 to 38 bust measure. Regular prices 50c, 65c, 75c each. Tuesday, each 35c.

**Women's Nursing Vests,** the Allen patent, heavy white or natural wool mixture, high neck, long sleeves, button front; sizes for 32 to 38 bust measure. Regular price 75c each. Tuesday, each 50c.

**Infants' Vests,** fine white ribbed wool and cotton mixture, high neck, long sleeves, button front style, also 50c.

**Long Glace Kid Gloves.** Women's Long Glace Kid Gloves, about one-third off regular prices. The lot consists of 16, 12, 8 and 6 button lengths; in colors black, white, tan, brown, grey and mode; not all lengths in each color, nor even sizes in each color and length; manufactured by one of the best French makers; best workmanship, perfect fitting:  
16-button, regular \$2.50, for \$1.95.  
12-button, regular \$2.00, for \$1.45.  
8 and 6 button, regular \$1.75, for \$1.20.

**Useful Christmas Gifts**  
In Our Dress Goods Dept., 2nd Floor.  
100 only beautiful Silk Embroidered Waist Lengths, cream only; four splendid designs; from richly embroidered in silk, with enough silk sleeves, button trim sleeves and neck. Regular \$2.00. Tuesday's price \$1.50.

**SUITINGS AND DRESS FABRICS ARE PRACTICAL CHRISTMAS GIFTS.**  
We are showing Tuesday a fine collection of Dress and Suiting Lengths, all boxed in fancy gift boxes, silk striped voiles, silk striped taffetas, Henriettas, silk and wool gloria, San Toys, poplins, Pancholes, tweeds, shepherd checks, broadcloths, etc., etc., in every wanted shade and color. Prices from \$3.00 to \$10.00 and the length.

**Waist Lengths of pure wool delaines,** in a variety of designs and colorings; the largest assortment in Canada to choose from; 3 yards in gift box for \$1.00, \$1.20, \$1.50.

**Women's Real French Kid Gloves,** wrist length, dome fasteners, over-sewn seams, gusset fingers, Paris points, black, white, tan, brown, grey, navy, green; all sizes. Regular \$1.00. On sale Tuesday for 75c.

**Men's Military Brushes,** with solid ebony backs, each 50c, 59c, 75c, \$1.00, \$1.25, \$1.50, \$1.75, \$2.00, \$2.50 and \$3.00. Women's Hair Brushes, with solid ebony backs, either convex, concave or oval backs, with long pure white bristles, each 50c, 59c, 69c, 75c, \$1.00, \$1.25, \$1.50, \$1.75, \$2.00, \$2.50, \$2.75 to \$3.50. Cloth Brushes, with concave, convex or oval backs, each 75c, 85c, \$1.00, \$1.25, \$1.50 to \$2.00. Hat Brushes, with concave, convex or oval backs, each 50c, 55c, 75c, 85c and \$1.00.

**Men's Military Brushes,** with solid ebony backs, each 50c, 59c, 75c, \$1.00, \$1.25, \$1.50, \$1.75, \$2.00, \$2.50 and \$3.00. Women's Hair Brushes, with solid ebony backs, either convex, concave or oval backs, with long pure white bristles, each 50c, 59c, 69c, 75c, \$1.00, \$1.25, \$1.50, \$1.75, \$2.00, \$2.50, \$2.75 to \$3.50. Cloth Brushes, with concave, convex or oval backs, each 75c, 85c, \$1.00, \$1.25, \$1.50 to \$2.00. Hat Brushes, with concave, convex or oval backs, each 50c, 55c, 75c, 85c and \$1.00.

**Men's Military Brushes,** with solid ebony backs, each 50c, 59c, 75c, \$1.00, \$1.25, \$1.50, \$1.75, \$2.00, \$2.50 and \$3.00. Women's Hair Brushes, with solid ebony backs, either convex, concave or oval backs, with long pure white bristles, each 50c, 59c, 69c, 75c, \$1.00, \$1.25, \$1.50, \$1.75, \$2.00, \$2.50, \$2.75 to \$3.50. Cloth Brushes, with concave, convex or oval backs, each 75c, 85c, \$1.00, \$1.25, \$1.50 to \$2.00. Hat Brushes, with concave, convex or oval backs, each 50c, 55c, 75c, 85c and \$1.00.

**Men's Military Brushes,** with solid ebony backs, each 50c, 59c, 75c, \$1.00, \$1.25, \$1.50, \$1.75, \$2.00, \$2.50 and \$3.00. Women's Hair Brushes, with solid ebony backs, either convex, concave or oval backs, with long pure white bristles, each 50c, 59c, 69c, 75c, \$1.00, \$1.25, \$1.50, \$1.75, \$2.00, \$2.50, \$2.75 to \$3.50. Cloth Brushes, with concave, convex or oval backs, each 75c, 85c, \$1.00, \$1.25, \$1.50 to \$2.00. Hat Brushes, with concave, convex or oval backs, each 50c, 55c, 75c, 85c and \$1.00.

**Men's Military Brushes,** with solid ebony backs, each 50c, 59c, 75c, \$1.00, \$1.25, \$1.50, \$1.75, \$2.00, \$2.50 and \$3.00. Women's Hair Brushes, with solid ebony backs, either convex, concave or oval backs, with long pure white bristles, each 50c, 59c, 69c, 75c, \$1.00, \$1.25, \$1.50, \$1.75, \$2.00, \$2.50, \$2.75 to \$3.50. Cloth Brushes, with concave, convex or oval backs, each 75c, 85c, \$1.00, \$1.25, \$1.50 to \$2.00. Hat Brushes, with concave, convex or oval backs, each 50c, 55c, 75c, 85c and \$1.00.

**Men's Military Brushes,** with solid ebony backs, each 50c, 59c, 75c, \$1.00, \$1.25, \$1.50, \$1.75, \$2.00, \$2.50 and \$3.00. Women's Hair Brushes, with solid ebony backs, either convex, concave or oval backs, with long pure white bristles, each 50c, 59c, 69c, 75c, \$1.00, \$1.25, \$1.50, \$1.75, \$2.00, \$2.50, \$2.75 to \$3.50. Cloth Brushes, with concave, convex or oval backs, each 75c, 85c, \$1.00, \$1.25, \$1.50 to \$2.00. Hat Brushes, with concave, convex or oval backs, each 50c, 55c, 75c, 85c and \$1.00.

**Men's Military Brushes,** with solid ebony backs, each 50c, 59c, 75c, \$1.00, \$1.25, \$1.50, \$1.75, \$2.00, \$2.50 and \$3.00. Women's Hair Brushes, with solid ebony backs, either convex, concave or oval backs, with long pure white bristles, each 50c, 59c, 69c, 75c, \$1.00, \$1.25, \$1.50, \$1.75, \$2.00, \$2.50, \$2.75 to \$3.50. Cloth Brushes, with concave, convex or oval backs, each 75c, 85c, \$1.00, \$1.25, \$1.50 to \$2.00. Hat Brushes, with concave, convex or oval backs, each 50c, 55c, 75c, 85c and \$1.00.

**Men's Military Brushes,** with solid ebony backs, each 50c, 59c, 75c, \$1.00, \$1.25, \$1.50, \$1.75, \$2.00, \$2.50 and \$3.00. Women's Hair Brushes, with solid ebony backs, either convex, concave or oval backs, with long pure white bristles, each 50c, 59c, 69c, 75c, \$1.00, \$1.25, \$1.50, \$1.75, \$2.00, \$2.50, \$2.75 to \$3.50. Cloth Brushes, with concave, convex or oval backs, each 75c, 85c, \$1.00, \$1.25, \$1.50 to \$2.00. Hat Brushes, with concave, convex or oval backs, each 50c, 55c, 75c, 85c and \$1.00.

**Men's Military Brushes,** with solid ebony backs, each 50c, 59c, 75c, \$1.00, \$1.25, \$1.50, \$1.75, \$2.00, \$2.50 and \$3.00. Women's Hair Brushes, with solid ebony backs, either convex, concave or oval backs, with long pure white bristles, each 50c, 59c, 69c, 75c, \$1.00, \$1.25, \$1.50, \$1.75, \$2.00, \$2.50, \$2.75 to \$3.50. Cloth Brushes, with concave, convex or oval backs, each 75c, 85c, \$1.00, \$1.25, \$1.50 to \$2.00. Hat Brushes, with concave, convex or oval backs, each 50c, 55c, 75c, 85c and \$1.00.

**Men's Military Brushes,** with solid ebony backs, each 50c, 59c, 75c, \$1.00, \$1.25, \$1.50, \$1.75, \$2.00, \$2.50 and \$3.00. Women's Hair Brushes, with solid ebony backs, either convex, concave or oval backs, with long pure white bristles, each 50c, 59c, 69c, 75c, \$1.00, \$1.25, \$1.50, \$1.75, \$2.00, \$2.50, \$2.75 to \$3.50. Cloth Brushes, with concave, convex or oval backs, each 75c, 85c, \$1.00, \$1.25, \$1.50 to \$2.00. Hat Brushes, with concave, convex or oval backs, each 50c, 55c, 75c, 85c and \$1.00.

**Men's Military Brushes,** with solid ebony backs, each 50c, 59c, 75c, \$1.00, \$1.25, \$1.50, \$1.75, \$2.00, \$2.50 and \$3.00. Women's Hair Brushes, with solid ebony backs, either convex, concave or oval backs, with long pure white bristles, each 50c, 59c, 69c, 75c, \$1.00, \$1.25, \$1.50, \$1.75, \$2.00, \$2.50, \$2.75 to \$3.50. Cloth Brushes, with concave, convex or oval backs, each 75c, 85c, \$1.00, \$1.25, \$1.50 to \$2.00. Hat Brushes, with concave, convex or oval backs, each 50c, 55c, 75c, 85c and \$1.00.

**Men's Military Brushes,** with solid ebony backs, each 50c, 59c, 75c, \$1.00, \$1.25, \$1.50, \$1.75, \$2.00, \$2.50 and \$3.00. Women's Hair Brushes, with solid ebony backs, either convex, concave or oval backs, with long pure white bristles, each 50c, 59c, 69c, 75c, \$1.00, \$1.25, \$1.50, \$1.75, \$2.00, \$2.50, \$2.75 to \$3.50. Cloth Brushes, with concave, convex or oval backs, each 75c, 85c, \$1.00, \$1.25, \$1.50 to \$2.00. Hat Brushes, with concave, convex or oval backs, each 50c, 55c, 75c, 85c and \$1.00.

**Men's Military Brushes,** with solid ebony backs, each 50c, 59c, 75c, \$1.00, \$1.25, \$1.50, \$1.75, \$2.00, \$2.50 and \$3.00. Women's Hair Brushes, with solid ebony backs, either convex, concave or oval backs, with long pure white bristles, each 50c, 59c, 69c, 75c, \$1.00, \$1.25, \$1.50, \$1.75, \$2.00, \$2.50, \$2.75 to \$3.50. Cloth Brushes, with concave, convex or oval backs, each 75c, 85c, \$1.00, \$1.25, \$1.50 to \$2.00. Hat Brushes, with concave, convex or oval backs, each 50c, 55c, 75c, 85c and \$1.00.

**Men's Military Brushes,** with solid ebony backs, each 50c, 59c, 75c, \$1.00, \$1.25, \$1.50, \$1.75, \$2.00, \$2.50 and \$3.00. Women's Hair Brushes, with solid ebony backs, either convex, concave or oval backs, with long pure white bristles, each 50c, 59c, 69c, 75c, \$1.00, \$1.25, \$1.50, \$1.75, \$2.00, \$2.50, \$2.75 to \$3.50. Cloth Brushes, with concave, convex or oval backs, each 75c, 85c, \$1.00, \$1.25, \$1.50 to \$2.00. Hat Brushes, with concave, convex or oval backs, each 50c, 55c, 75c, 85c and \$1.00.

**Men's Military Brushes,** with solid ebony backs, each 50c, 59c, 75c, \$1.00, \$1.25, \$1.50, \$1.75, \$2.00, \$2.50 and \$3.00. Women's Hair Brushes, with solid ebony backs, either convex, concave or oval backs, with long pure white bristles, each 50c, 59c, 69c, 75c, \$1.00, \$1.25, \$1.50, \$1.75, \$2.00, \$2.50, \$2.75 to \$3.50. Cloth Brushes, with concave, convex or oval backs, each 75c, 85c, \$1.00, \$1.25, \$1.50 to \$2.00. Hat Brushes, with concave, convex or oval backs, each 50c, 55c, 75c, 85c and \$1.00.

**Men's Military Brushes,** with solid ebony backs, each 50c, 59c, 75c, \$1.00, \$1.25, \$1.50, \$1.75, \$2.00, \$2.50 and \$3.00. Women's Hair Brushes, with solid ebony backs, either convex, concave or oval backs, with long pure white bristles, each 50c, 59c, 69c, 75c, \$1.00, \$1.25, \$1.50, \$1.75, \$2.00, \$2.50, \$2.75 to \$3.50. Cloth Brushes, with concave, convex or oval backs, each 75c, 85c, \$1.00, \$1.25, \$1.50 to \$2.00. Hat Brushes, with concave, convex or oval backs, each 50c, 55c, 75c, 85c and \$1.00.

**Men's Military Brushes,** with solid ebony backs, each 50c, 59c, 75c, \$1.00, \$1.25, \$1.50, \$1.75, \$2.00, \$2.50 and \$3.00. Women's Hair Brushes, with solid ebony backs, either convex, concave or oval backs, with long pure white bristles, each 50c, 59c, 69c, 75c, \$1.00, \$1.25, \$1.50, \$1.75, \$2.00, \$2.50, \$2.75 to \$3.50. Cloth Brushes, with concave, convex or oval backs, each 75c, 85c, \$1.00, \$1.25, \$1.50 to \$2.00. Hat Brushes, with concave, convex or oval backs, each 50c, 55c, 75c, 85c and \$1.00.

**Men's Military Brushes,** with solid ebony backs, each 50c, 59c, 75c, \$1.00, \$1.25, \$1.50, \$1.75, \$2.00, \$2.50 and \$3.00. Women's Hair Brushes, with solid ebony backs, either convex, concave or oval backs, with long pure white bristles, each 50c, 59c, 69c, 75c, \$1.00, \$1.25, \$1.50, \$1.75, \$2.00, \$2.50, \$2.75 to \$3.50. Cloth Brushes, with concave, convex or oval backs, each 75c, 85c, \$1.00, \$1.25, \$1.50 to \$2.00. Hat Brushes, with concave, convex or oval backs, each 50c, 55c, 75c, 85c and \$1.00.

**Men's Military Brushes,** with solid ebony backs, each 50c, 59c, 75c, \$1.00, \$1.25, \$1.50, \$1.75, \$2.00, \$2.50 and \$3.00. Women's Hair Brushes, with solid ebony backs, either convex, concave or oval backs, with long pure white bristles, each 50c, 59c, 69c, 75c, \$1.00, \$1.25, \$1.50, \$1.75, \$2.00, \$2.50, \$2.75 to \$3.50. Cloth Brushes, with concave, convex or oval backs, each 75c, 85c, \$1.00, \$1.25, \$1.50 to \$2.00. Hat Brushes, with concave, convex or oval backs, each 50c, 55c, 75c, 85c and \$1.00.

**Men's Military Brushes,** with solid ebony backs, each 50c, 59c, 75c, \$1.00, \$1.25, \$1.50, \$1.75, \$2.00, \$2.50 and \$3.00. Women's Hair Brushes, with solid ebony backs, either convex, concave or oval backs, with long pure white bristles, each 50c, 59c, 69c, 75c, \$1.00, \$1.25, \$1.50, \$1.75, \$2.00, \$2.50, \$2.75 to \$3.50. Cloth Brushes, with concave, convex or oval backs, each 75c, 85c, \$1.00, \$1.25, \$1.50 to \$2.00. Hat Brushes, with concave, convex or oval backs, each 50c, 55c, 75c, 85c and \$1.00.

**Women's Drawers,** heavy ribbed cotton, natural color, ankle length, closed style only; sizes 22 to 28. Regular price 35c pair. Tuesday, each 18c.

**These warm, woolly coats will give necessary comfort to baby this cold weather;** they are natty in style, of good quality and beautifully made. Phone orders filled.

**300 Infants' Heavy White Bearcloth Coats,** lined throughout with white flannel, large cape collar, front fastened with frogs and buttons; lengths 22 and 24 inches; for ages 6 months, 1, 2 years. Tuesday, each \$1.95.

**Men's Military Brushes,** with solid ebony backs, each 50c, 59c, 75c, \$1.00, \$1.25, \$1.50, \$1.75, \$2.00, \$2.50 and \$3.00. Women's Hair Brushes, with solid ebony backs, either convex, concave or oval backs, with long pure white bristles, each 50c, 59c, 69c, 75c, \$1.00, \$1.25, \$1.50, \$1.75, \$2.00, \$2.50, \$2.75 to \$3.50. Cloth Brushes, with concave, convex or oval backs, each 75c, 85c, \$1.00, \$1.25, \$1.50 to \$2.00. Hat Brushes, with concave, convex or oval backs, each 50c, 55c, 75c, 85c and \$1.00.

**Men's Military Brushes,** with solid ebony backs, each 50c, 59c, 75c, \$1.00, \$1.25, \$1.50, \$1.75, \$2.00, \$2.50 and \$3.00. Women's Hair Brushes, with solid ebony backs, either convex, concave or oval backs, with long pure white bristles, each 50c, 59c, 69c, 75c, \$1.00, \$1.25, \$1.50, \$1.75, \$2.00, \$2.50, \$2.75 to \$3.50. Cloth Brushes, with concave, convex or oval backs, each 75c, 85c, \$1.00, \$1.25, \$1.50 to \$2.00. Hat Brushes, with concave, convex or oval backs, each 50c, 55c, 75c, 85c and \$1.00.

**Men's Military Brushes,** with solid ebony backs, each 50c, 59c, 75c, \$1.00, \$1.25, \$1.50, \$1.75, \$2.00, \$2.50 and \$3.00. Women's Hair Brushes, with solid ebony backs, either convex, concave or oval backs, with long pure white bristles, each 50c, 59c, 69c, 75c, \$1.00, \$1.25, \$1.50, \$1.75, \$2.00, \$2.50, \$2.75 to \$3.50. Cloth Brushes, with concave, convex or oval backs, each 75c, 85c, \$1.00, \$1.25, \$1.50 to \$2.00. Hat Brushes, with concave, convex or oval backs, each 50c, 55c, 75c, 85c and \$1.00.

**Men's Military Brushes,** with solid ebony backs, each 50c, 59c, 75c, \$1.00, \$1.25, \$1.50, \$1.75, \$2.00, \$2.50 and \$3.00. Women's Hair Brushes, with solid ebony backs, either convex, concave or oval backs, with long pure white bristles, each 50c, 59c, 69c, 75c, \$1.00, \$1.25, \$1.50, \$1.75, \$2.00, \$2.50, \$2.75 to \$3.50. Cloth Brushes, with concave, convex or oval backs, each 75c, 85c, \$1.00, \$1.25, \$1.50 to \$2.00. Hat Brushes, with concave, convex or oval backs, each 50c, 55c, 75c, 85c and \$1.00.

**Men's Military Brushes,** with solid ebony backs, each 50c, 59c, 75c, \$1.00, \$1.25, \$1.50, \$1.75, \$2.00, \$2.50 and \$3.00. Women's Hair Brushes, with solid ebony backs, either convex, concave or oval backs, with long pure white bristles, each 50c, 59c, 69c, 75c, \$1.00, \$1.25, \$1.50, \$1.75, \$2.00, \$2.50, \$2.75 to \$3.50. Cloth Brushes, with concave, convex or oval backs, each 75c, 85c, \$1.00, \$1.25, \$1.50 to \$2.00. Hat Brushes, with concave, convex or oval backs, each 50c, 55c, 75c, 85c and \$1.00.

**Men's Military Brushes,** with solid ebony backs, each 50c, 59c, 75c, \$1.00, \$1.25, \$1.50, \$1.75, \$2.00, \$2.50 and \$3.00. Women's Hair Brushes, with solid ebony backs, either convex, concave or oval backs, with long pure white bristles, each 50c, 59c, 69c, 75c, \$1.00, \$1.25, \$1.50, \$1.75, \$2.00, \$2.50, \$2.75 to \$3.50. Cloth Brushes, with concave, convex or oval backs, each 75c, 85c, \$1.00, \$1.25, \$1.50 to \$2.00. Hat Brushes, with concave, convex or oval backs, each 50c, 55c, 75c, 85c and \$1.00.

**Men's Military Brushes,** with solid ebony backs, each 50c, 59c, 75c, \$1.00, \$1.25, \$1.50, \$1.75, \$2.00, \$2.50 and \$3.00. Women's Hair Brushes, with solid ebony backs, either convex, concave or oval backs, with long pure white bristles, each 50c, 59c, 69c, 75c, \$1.00, \$1.25, \$1.50, \$1.75, \$2.00, \$2.50, \$2.75 to \$3.50. Cloth Brushes, with concave, convex or oval backs, each 75c, 85c, \$1.00, \$1.25, \$1.50 to \$2.00. Hat Brushes, with concave, convex or oval backs, each 50c, 55c, 75c, 85c and \$1.00.

**Men's Military Brushes,** with solid ebony backs, each 50c, 59c, 75c, \$1.00, \$1.25, \$1.50, \$1.75, \$2.00, \$2.50 and \$3.00. Women's Hair Brushes, with solid ebony backs, either convex, concave or oval backs, with long pure white bristles, each 50c, 59c, 69c, 75c, \$1.00, \$1.25, \$1.50, \$1.75, \$2.00, \$2.50, \$2.75 to \$3.50. Cloth Brushes, with concave, convex or oval backs, each 75c, 85c, \$1.00, \$1.25, \$1.50 to \$2.00. Hat Brushes, with concave, convex or oval backs, each 50c, 55c, 75c, 85c and \$1.00.

**Men's Military Brushes,** with solid ebony backs, each 50c, 59c, 75c, \$1.00, \$1.25, \$1.50, \$1.75, \$2.00, \$2.50 and \$3.00. Women's Hair Brushes, with solid ebony backs, either convex, concave or oval backs, with long pure white bristles, each 50c, 59c, 69c, 75c, \$1.00, \$1.25, \$1.50, \$1.75, \$2.00, \$2.50, \$2.75 to \$3.50. Cloth Brushes, with concave, convex or oval backs, each 75c, 85c, \$1.00, \$1.25, \$1.50 to \$2.00. Hat Brushes, with concave, convex or oval backs, each 50c, 55c, 75c, 85c and \$1.00.

**Men's Military Brushes,** with solid ebony backs, each 50c, 59c, 75c, \$1.00, \$1.25, \$1.50, \$1.75, \$2.00, \$2.50 and \$3.00. Women's Hair Brushes, with solid ebony backs, either convex, concave or oval backs, with long pure white bristles, each 50c, 59c, 69c, 75c, \$1.00, \$1.25, \$1.50, \$1.75, \$2.00, \$2.50, \$2.75 to \$3.50. Cloth Brushes, with concave, convex or oval backs, each 75c, 85c, \$1.00, \$1.25, \$1.50 to \$2.00. Hat Brushes, with concave, convex or oval backs, each 50c, 55c, 75c, 85c and \$1.00.

**Men's Military Brushes,** with solid ebony backs, each 50c, 59c, 75c, \$1.00, \$1.25, \$1.50, \$1.75, \$2.00, \$2.50 and \$3.00. Women's Hair Brushes, with solid ebony backs, either convex, concave or oval backs, with long pure white bristles, each 50c, 59c, 69c, 75c, \$1.00, \$1.25, \$1.50, \$1.75, \$2.00, \$2.50, \$2.75 to \$3.50. Cloth Brushes, with concave, convex or oval backs, each 75c, 85c, \$1.00, \$1.25, \$1.50 to \$2.00. Hat Brushes, with concave, convex or oval backs, each 50c, 55c, 75c, 85c and \$1.00.

**Men's Military Brushes,** with solid ebony backs, each 50c, 59c, 75c, \$1.00, \$1.25, \$1.50, \$1.75, \$2.00, \$2.50 and \$3.00. Women's Hair Brushes, with solid ebony backs, either convex, concave or oval backs, with long pure white bristles, each 50c, 59c, 69c, 75c, \$1.00, \$1.25, \$1.50, \$1.75, \$2.00, \$2.50, \$2.75 to \$3.50. Cloth Brushes, with concave, convex or oval backs, each 75c, 85c, \$1.00, \$1.25, \$1.50 to \$2.00. Hat Brushes, with concave, convex or oval backs, each 50c, 55c, 75c, 85c and \$1.00.

**Men's Military Brushes,** with solid ebony backs, each 50c, 59c, 75c, \$1.00, \$1.25, \$1.50, \$1.75, \$2.00, \$2.50 and \$3.00. Women's Hair Brushes, with solid ebony backs, either convex, concave or oval backs, with long pure white bristles, each 50c, 59c, 69c, 75c, \$1.00, \$1.25, \$1.50, \$1.75, \$2.00, \$2.50, \$2.75 to \$3.50. Cloth Brushes, with concave, convex or oval backs, each 75c, 85c, \$1.00, \$1.25, \$1.50 to \$2.00. Hat Brushes, with concave, convex or oval backs, each 50c, 55c, 75c, 85c and \$1.00.

**Men's Military Brushes,** with solid ebony backs, each 50c, 59c, 75c, \$1.00, \$1.25, \$1.50, \$1.75, \$2.00, \$2.50 and \$3.00. Women's Hair Brushes, with solid ebony backs, either convex, concave or oval backs, with long pure white bristles, each 50c, 59c, 69c, 75c, \$1.00, \$1.25, \$1.50, \$1.75, \$2.00, \$2.50, \$2.75 to \$3.50. Cloth Brushes, with concave, convex or oval backs, each 75c, 85c, \$1.00, \$1.25, \$1.50 to \$2.00. Hat Brushes, with concave, convex or oval backs, each 50c, 55c, 75c, 85c and \$1.00.

**Men's Military Brushes,** with solid ebony backs, each 50c, 59c, 75c, \$1.00, \$1.25, \$1.50, \$1.75, \$2.00, \$2.50 and \$3.00. Women's Hair Brushes, with solid ebony backs, either convex, concave or oval backs, with long pure white bristles, each 50c, 59c, 69c, 75c, \$1.00, \$1.25, \$1.50, \$1.75, \$2.00, \$2.50, \$2.75 to \$3.50. Cloth Brushes, with concave, convex or oval backs, each 75c, 85c, \$1.00, \$1.25, \$1.50 to \$2.00. Hat Brushes, with concave, convex or oval backs, each 50c, 55c, 75c, 85c and \$1.00.

**Men's Military Brushes,** with solid ebony backs, each