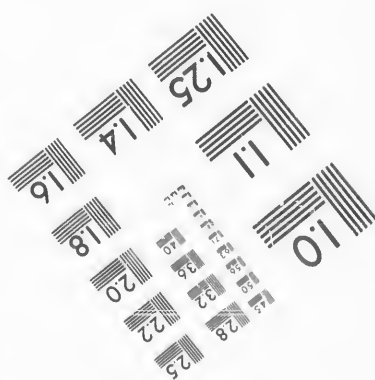
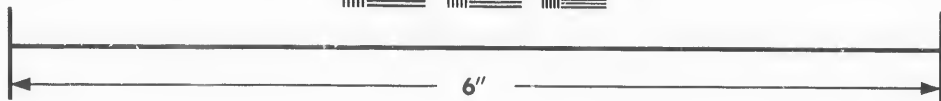
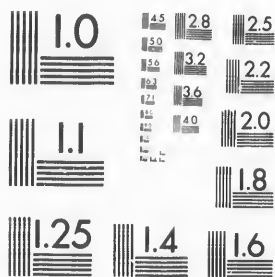


**IMAGE EVALUATION  
TEST TARGET (MT-3)**



**Photographic  
Sciences  
Corporation**

23 WEST MAIN STREET  
WEBSTER, N.Y. 14580  
(716) 872-4503

**CIHM/ICMH  
Microfiche  
Series.**

**CIHM/ICMH  
Collection de  
microfiches.**



Canadian Institute for Historical Microreproductions / Institut canadien de microreproductions historiques

**© 1987**

Technical and Bibliographic Notes/Notes techniques et bibliographiques

The Institute has attempted to obtain the best original copy available for filming. Features of this copy which may be bibliographically unique, which may alter any of the images in the reproduction, or which may significantly change the usual method of filming, are checked below.

L'Institut a microfilmé le meilleur exemplaire qu'il lui a été possible de se procurer. Les détails de cet exemplaire qui sont peut-être uniques du point de vue bibliographique, qui peuvent modifier une image reproduite, ou qui peuvent exiger une modification dans la méthode normale de filmage sont indiqués ci-dessous.

- |  |  |
|--|--|
| <input type="checkbox"/> Coloured covers/<br>Couverture de couleur   | <input type="checkbox"/> Coloured pages/<br>Pages de couleur   |
| <input type="checkbox"/> Covers damaged/<br>Couverture endommagée  | <input type="checkbox"/> Pages damaged/<br>Pages endommagées   |
| <input type="checkbox"/> Covers restored and/or laminated/<br>Couverture restaurée et/ou pelliculée  | <input type="checkbox"/> Pages restored and/or laminated/<br>Pages restaurées et/ou pelliculées  |
| <input type="checkbox"/> Cover title missing/<br>Le titre de couverture manque   | <input checked="" type="checkbox"/> Pages discoloured, stained or foxed/<br>Pages décolorées, tachetées ou piquées   |
| <input type="checkbox"/> Coloured maps/<br>Cartes géographiques en couleur   | <input type="checkbox"/> Pages detached/<br>Pages détachées  |
| <input type="checkbox"/> Coloured ink (i.e. other than blue or black)/<br>Encre de couleur (i.e. autre que bleue ou noire)   | <input checked="" type="checkbox"/> Showthrough/<br>Transparence   |
| <input type="checkbox"/> Coloured plates and/or illustrations/<br>Planches et/ou illustrations en couleur  | <input type="checkbox"/> Quality of print varies/<br>Qualité inégale de l'impression   |
| <input checked="" type="checkbox"/> Bound with other material/<br>Relié avec d'autres documents  | <input type="checkbox"/> Includes supplementary material/<br>Comprend du matériel supplémentaire   |
| <input type="checkbox"/> Tight binding may cause shadows or distortion<br>along interior margin/<br>La reliure serrée peut causer de l'ombre ou de la<br>distorsion le long de la marge intérieure   | <input type="checkbox"/> Only edition available/<br>Seule édition disponible   |
| <input type="checkbox"/> Blank leaves added during restoration may<br>appear within the text. Whenever possible, these<br>have been omitted from filming/<br>Il se peut que certaines pages blanches ajoutées<br>lors d'une restauration apparaissent dans le texte,<br>mais, lorsque cela était possible, ces pages n'ont<br>pas été filmées. | <input type="checkbox"/> Pages wholly or partially obscured by errata<br>slips, tissues, etc., have been refilmed to<br>ensure the best possible image/<br>Les pages totalement ou partiellement<br>obscurcies par un feuillet d'errata, une pelure,<br>etc., ont été filmées à nouveau de façon à<br>obtenir la meilleure image possible. |
| <input checked="" type="checkbox"/> Additional comments:/<br>Commentaires supplémentaires:   | [Printed ephemera] 1 sheet (verso blank)   |

This item is filmed at the reduction ratio checked below/  
Ce document est filmé au taux de réduction indiqué ci-dessous.

10X	12X	14X	16X	18X	20X	22X	24X	26X	28X	30X	32X
					/						

The copy filmed here has been reproduced thanks to the generosity of:

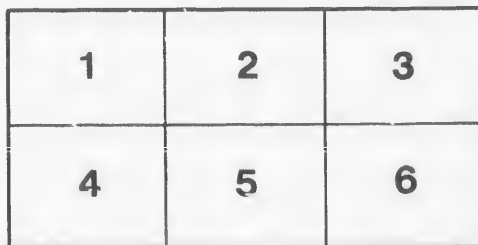
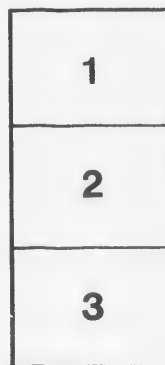
Douglas Library  
Queen's University

The images appearing here are the best quality possible considering the condition and legibility of the original copy and in keeping with the filming contract specifications.

Original copies in printed paper covers are filmed beginning with the front cover and ending on the last page with a printed or illustrated impression, or the back cover when appropriate. All other original copies are filmed beginning on the first page with a printed or illustrated impression, and ending on the last page with a printed or illustrated impression.

The last recorded frame on each microfiche shall contain the symbol  $\rightarrow$  (meaning "CONTINUED"), or the symbol  $\nabla$  (meaning "END"), whichever applies.

Maps, plates, charts, etc., may be filmed at different reduction ratios. Those too large to be entirely included in one exposure are filmed beginning in the upper left hand corner, left to right and top to bottom, as many frames as required. The following diagrams illustrate the method:



L'exemplaire filmé fut reproduit grâce à la générosité de:

Douglas Library  
Queen's University

Les images suivantes ont été reproduites avec le plus grand soin, compte tenu de la condition et de la netteté de l'exemplaire filmé, et en conformité avec les conditions du contrat de filmage.

Les exemplaires originaux dont la couverture en papier est imprimée sont filmés en commençant par le premier plat et en terminant soit par la dernière page qui comporte une empreinte d'impression ou d'illustration, soit par le second plat, selon le cas. Tous les autres exemplaires originaux sont filmés en commençant par la première page qui comporte une empreinte d'impression ou d'illustration et en terminant par la dernière page qui comporte une telle empreinte.

Un des symboles suivants apparaîtra sur la dernière image de chaque microfiche, selon le cas: le symbole  $\rightarrow$  signifie "A SUIVRE", le symbole  $\nabla$  signifie "FIN".

Les cartes, planches, tableaux, etc., peuvent être filmés à des taux de réduction différents. Lorsque le document est trop grand pour être reproduit en un seul cliché, il est filmé à partir de l'angle supérieur gauche, de gauche à droite, et de haut en bas, en prenant le nombre d'images nécessaire. Les diagrammes suivants illustrent la méthode.

Queen's University  
Library

KINGSTON, ONTARIO

L  
F1025  
1869 G

Queen's College,

KINGSTON, ONTARIO, CANADA, 29TH MAY, 1869.

DEAR SIR:

This Institution has been recently subjected to a financial embarrassment of the greatest severity. About eighteen months ago the failure of the Commercial Bank reduced its annual income by 1000 dollars, and in December last the Government of Ontario, having resolved to give no aid to educational Institutions connected with particular Churches, discontinued the annual grant of 7000 dollars allowed by the Government of Canada prior to the Confederation of the British American Provinces. Being thus deprived of more than half its revenue, the continuance of it on its present footing seemed to be almost impossible.

At a meeting of Synod held here in January last for the special consideration of this crisis, it was resolved to appeal to the friends of the College for an endowment of at least 100,000 dollars, which, bearing interest at six per cent, would fully make up for the reduction which has taken place. The support given to this scheme has been encouraging in the highest degree. We already estimate our subscriptions at 70,000 dollars and receipts over 25,000. So many localities have yet to be visited that no difficulty in obtaining the amount required is now apprehended. On the contrary it is proposed to extend the effort and endeavour to raise 50,000 dollars more, for the purpose of founding an additional professorship in each of the Faculties of Arts and Theology, and making other improvements which the Trustees have for some time been anxious to introduce.

To complete so great an enterprise, especially in a new country like this, is a work of time. Many of the subscriptions are payable by instalments, and for this reason it is not expected that the smaller endowment of 100,000 dollars will be completed before April, 1871. The sustentation of the College in the meantime, without using any part of the collections intended for the endowment, is a subject of pressing importance and great anxiety. In order to meet this difficulty the Colonial Committee of the Church of Scotland has been asked to authorize an appeal to the friends of the College in Scotland, and this the Committee has generously done in the pages of the *Home and Foreign Missionary Record*. About £1000 Sterling a-year for the next two years will be required.

Any assistance you can give or induce others to give will be most thankfully received. Simon S. Laurie, Esq., Secretary to the Colonial Committee, 22 Queen Street, Edinburgh, will forward any contributions which may be sent to him.

Queen's College was founded in 1841 by a Royal Charter conferring upon it the style and privileges of a University. In the departments of Arts and Theology it has at present six Professors. It has been attended by upwards of 700 students, most of whom have reflected credit upon their *Alma Mater*, some of whom have highly distinguished themselves in competition with students from Institutions in the Old World. It has educated for the Church in Canada more than one half of the Ministers on the Synod Roll. It is universally acknowledged to have exercised a most important influence on the progress of Superior Education in this new country.

I have the honour to be your obedient Servant,

W. SNODGRASS,

*Convener of the Synod's General Committee.*

