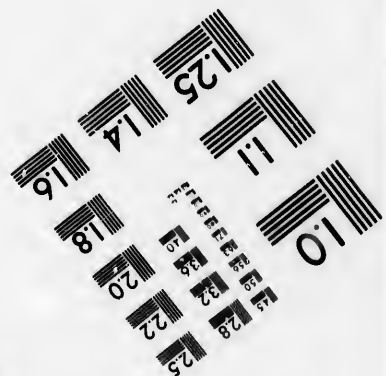
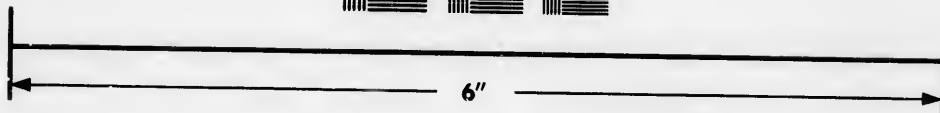
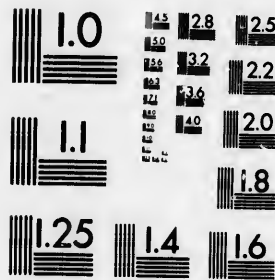


**IMAGE EVALUATION  
TEST TARGET (MT-3)**



**Photographic  
Sciences  
Corporation**

23 WEST MAIN STREET  
WEBSTER, N.Y. 14580  
(716) 872-4503

1.5 1.8 2.0 2.2 2.5  
2.8 3.2 3.6 4.0 4.5  
5.0 5.6 6.3 7.1 8.0

**CIHM/ICMH  
Microfiche  
Series.**

**CIHM/ICMH  
Collection de  
microfiches.**



**Canadian Institute for Historical Microreproductions / Institut canadien de microreproductions historiques**

1.0

**© 1986**

Technical and Bibliographic Notes/Notes techniques et bibliographiques

The Institute has attempted to obtain the best original copy available for filming. Features of this copy which may be bibliographically unique, which may alter any of the images in the reproduction, or which may significantly change the usual method of filming, are checked below.

L'Institut a microfilmé le meilleur exemplaire qu'il lui a été possible de se procurer. Les détails de cet exemplaire qui sont peut-être uniques du point de vue bibliographique, qui peuvent modifier une image reproduite, ou qui peuvent exiger une modification dans la méthode normale de filmage sont indiqués ci-dessous.

- |  |  |
|--|--|
| <input type="checkbox"/> Coloured covers/<br>Couverture de couleur   | <input type="checkbox"/> Coloured pages/<br>Pages de couleur   |
| <input type="checkbox"/> Covers damaged/<br>Couverture endommagée  | <input type="checkbox"/> Pages damaged/<br>Pages endommagées   |
| <input type="checkbox"/> Covers restored and/or laminated/<br>Couverture restaurée et/ou pelliculée  | <input type="checkbox"/> Pages restored and/or laminated/<br>Pages restaurées et/ou pelliculées  |
| <input type="checkbox"/> Cover title missing/<br>Le titre de couverture manque   | <input type="checkbox"/> Pages discoloured, stained or foxed/<br>Pages décolorées, tachetées ou piquées  |
| <input type="checkbox"/> Coloured maps/<br>Cartes géographiques en couleur   | <input type="checkbox"/> Pages detached/<br>Pages détachées  |
| <input type="checkbox"/> Coloured ink (i.e. other than blue or black)/<br>Encre de couleur (i.e. autre que bleue ou noire)   | <input type="checkbox"/> Showthrough/<br>Transparence  |
| <input type="checkbox"/> Coloured plates and/or illustrations/<br>Planches et/ou illustrations en couleur  | <input type="checkbox"/> Quality of print varies/<br>Qualité inégale de l'impression   |
| <input type="checkbox"/> Bound with other material/<br>Relié avec d'autres documents   | <input type="checkbox"/> Includes supplementary material/<br>Comprend du matériel supplémentaire   |
| <input type="checkbox"/> Tight binding may cause shadows or distortion<br>along interior margin/<br>La reliure serrée peut causer de l'ombre ou de la<br>distorsion le long de la marge intérieure   | <input type="checkbox"/> Only edition available/<br>Seule édition disponible   |
| <input type="checkbox"/> Blank leaves added during restoration may<br>appear within the text. Whenever possible, these<br>have been omitted from filming/<br>Il se peut que certaines pages blanches ajoutées<br>lors d'une restauration apparaissent dans le texte,<br>mais, lorsque cela était possible, ces pages n'ont<br>pas été filmées. | <input type="checkbox"/> Pages wholly or partially obscured by errata<br>slips, tissues, etc., have been refilmed to<br>ensure the best possible image/<br>Les pages totalement ou partiellement<br>obscurcies par un feuillet d'errata, une pelure,<br>etc., ont été filmées à nouveau de façon à<br>obtenir la meilleure image possible. |
- Additional comments:/ [Printed ephemera] [2] p. This copy is a photoreproduction.  
Commentaires supplémentaires:

This item is filmed at the reduction ratio checked below/  
Ce document est filmé au taux de réduction indiqué ci-dessous.

10X	14X	18X	22X	26X	30X
<input type="checkbox"/>	<input type="checkbox"/>	<input type="checkbox"/>	<input type="checkbox"/>	<input checked="" type="checkbox"/>	<input type="checkbox"/>
12X	16X	20X	24X	28X	32X

The copy filmed here has been reproduced thanks to the generosity of:

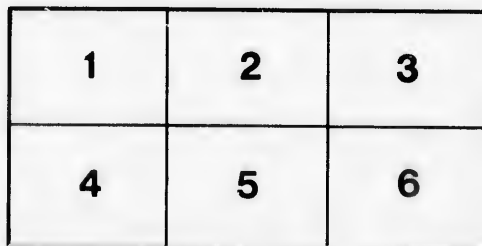
Bibliothèque nationale du Québec

The images appearing here are the best quality possible considering the condition and legibility of the original copy and in keeping with the filming contract specifications.

Original copies in printed paper covers are filmed beginning with the front cover and ending on the last page with a printed or illustrated impression, or the back cover when appropriate. All other original copies are filmed beginning on the first page with a printed or illustrated impression, and ending on the last page with a printed or illustrated impression.

The last recorded frame on each microfiche shall contain the symbol  $\rightarrow$  (meaning "CONTINUED"), or the symbol  $\nabla$  (meaning "END"), whichever applies.

Maps, plates, charts, etc., may be filmed at different reduction ratios. Those too large to be entirely included in one exposure are filmed beginning in the upper left hand corner, left to right and top to bottom, as many frames as required. The following diagrams illustrate the method:



L'exemplaire filmé fut reproduit grâce à la générosité de:

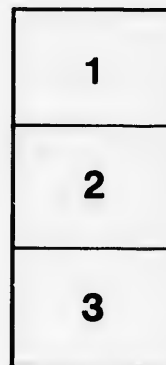
Bibliothèque nationale du Québec

Les images suivantes ont été reproduites avec le plus grand soin, compte tenu de la condition et de la netteté de l'exemplaire filmé, et en conformité avec les conditions du contrat de filmage.

Les exemplaires originaux dont la couverture en papier est imprimée sont filmés en commençant par le premier plat et en terminant soit par la dernière page qui comporte une empreinte d'impression ou d'illustration, soit par le second plat, selon le cas. Tous les autres exemplaires originaux sont filmés en commençant par la première page qui comporte une empreinte d'impression ou d'illustration et en terminant par la dernière page qui comporte une telle empreinte.

Un des symboles suivants apparaîtra sur la dernière image de chaque microfiche, selon le cas: le symbole  $\rightarrow$  signifie "A SUIVRE", le symbole  $\nabla$  signifie "FIN"

Les cartes, planches, tableaux, etc., peuvent être filmés à des taux de réduction différents. Lorsque le document est trop grand pour être reproduit en un seul cliché, il est filmé à partir de l'angle supérieur gauche, de gauche à droite, et de haut en bas, en prenant le nombre d'images nécessaire. Les diagrammes suivants illustrent la méthode.



ACCOUNT of DISBURSEMENTS, on, Saving, Transporting, Landing, Storing, &c. Goods  
from the Ship FAME, George Sarmon, Master, wrecked in the Rapids of Richelieu.

1802

May 21	To Cash paid for a Grapnel, a pair large Tongs, 9 Boat Hooks, and a Tackle and fall for the use of the Cargo	-	-	16	3	1	
	Deduct the Amount of 7 Boat Hooks, a pair large Tongs and a Tackle and fall sold at Auction	-	-	2	5	2	
							7 17 11
25	To J. M. Goddard for three Hogheads Table Beer for the use of the Crew and Labourers	-	-	7	10	0	
	Deduct 3 Empty Hhds. returned	-	-	2	5	0	
							5 5 0
	To Cash paid for Tea, Sugar, and Biscuit for the use of the Crew & Labourers in discharging the Ship	-	-	5	15	1 $\frac{1}{2}$	
	To do. our Wm. Burns's Expences to the Fame and back again, to consult with the Captain on the means of saving the Cargo	-	-	5	19	6	
28	To do. for 14 lb. Nails sent to the Ship to repair Packages	-	-	0	10	6	
	To do. Antoine Moizon, Master of the Galliot Angelique, for a Freight of Goods from the Richelieu	-	-	65	0	0	
29	To do. Charles Giroux, Master of the Shallop Saint Jacques, for a do. from do.	-	-	20	0	0	
June 15	To do. Ambroise Perufe, for the hire of a Batteau	-	-	5	0	0	
23	To Monro & Bell for a Freight of Goods from the Richelieu per the Schooner Juno, Bazil Planté, Master	-	-	32	0	0	
26	To Cash paid for 1 $\frac{1}{2}$ lb. Nails sent to the Ship to repair Packages	-	-	0	10	6	
July 1	To do. Daniel Starnes, Master of the Schooner Weazel, for remaining alongside the Ship for the Seamen and Labourers to live on board	-	-	47	11	6	
	To do. For a Freight of Goods per do. from the Richelieu	-	-	29	0	0	
3	To Antoine Cugnet, for a do. per the Schooner Catiche, Jean Decarreau, Master	-	-	61	0	0	
9	To Cash paid Labourers, Landing, Storing and Turning out Goods the days of Sale, Cooperage, Gauging, Cartage, Postage, &c.	-	-	156	17	0	
	To do. Henry Minter, George Woolsey and Capt. Richards, for proceeding to the Wreck, attending there to assist Capt. Sarmon and occasionally attending the Craft to Quebec to protect the Property	-	-	75	16	8	
July 10	To Lester & Motrogh, for a Freight of Goods from the Richelieu per the Schooner Globe, Charles Duhamel, Master	-	-	98	0	0	
23	To Monro & Bell, for Storage and Wharfage of Goods saved, and Sold on their Premises	-	-	127	15	0	
	To Robert Richardson's Account for Beef, supplied the Crew, and Labourers, during the Ship's unloading	-	-	21	19	6	
24	To Cash paid an Express sent to Montreal announcing the loss of the Fame	-	-	6	5	0	
	To do. The hire of a Batteau sent from Three Rivers to the Richelieu, and of one from Montreal with Oil Cloths, sent to assist in unloading the Ship	-	-	8	3	6	
	To do. the Mate, Officers and Crew of the Ship Fame, acting as Labourers in assisting to discharge her Cargo	£ 98	19	11			
	To do. Labourers from on Shore in do.	27	15	0			
	To do. for Provisions	12	17	6			
	To do. Sundry Expresses to Quebec respecting Craft, Surveyors, Smiths for repairing Iron Hooks, &c. The Revd. Mr. Denechaud for his Assistance and Sundries supplied by him	42	17	6			
							193 8 11
	To do. Wm. Lindfay, Jun. for his attendance in receiving Goods by different Craft from the Ship	-	-	17	10	0	
	To do. Messrs. James Tod, Mathew Bell and John Mure, for Surveying the Goods each day of Sale, comprising 12 days at One Guinea per day each	-	-	42	0	0	
	To do. the Attorney General for his opinion	-	-	2	0	0	
26	To do. 38 Entries at the Custom-House 2/9	-	-	5	4	6	
27	To do. Storage of Gun-Powder in the King's Magazine	-	-	7	6	6	
31	To François Bellet for Three Freights of Goods from the Richelieu per his Sloop Magdeleine	-	-	193	7	6	
							Carried Forward £ 1241 4 1 $\frac{1}{2}$

July 31	To Cash paid for drawing up a Notarial Agreement respecting the disposal of the Goods, Printing the same, advertising the Sale in the Quebec and Montreal Gazettes, Printing Hand Bills, Publication per the Bell-Man each day of Sale, Printing Certificates of Survey and this Account	-	-	-	-	27	10	0
	Commiffion at 5 per Cent	-	-	-	-	£	1268	14 1½
							63	8 8½
						£	1332	2 10
	To this Sum charged for our trouble in procuring Craft, attending to the Landing of the Goods, hiring Stores, obtaining Surveyors, Corresponding with the Interest-ed, on the means of saving the Property, and mode of Proceeding to the Sale's, aiding the Captain, &c.	-	-	-	-		109	0 0
						£	1432	2 10
	Deduct this Sum to reduce the above Amount to an exact pr. Centage of 3½ on the Amount of the Property saved and Sold	-	-	-	-		3	2 6
						£	1429	0 4

Errors Excepted,

QUEBEC, 31st JULY. 1802.

