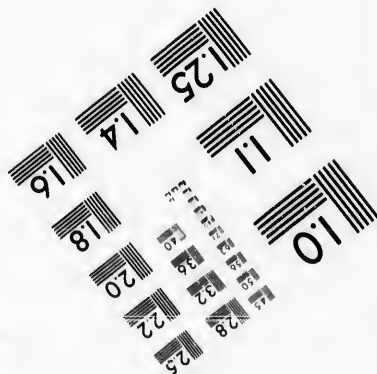
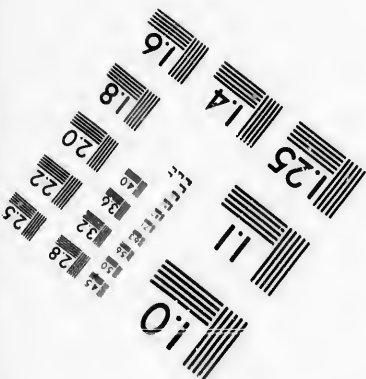
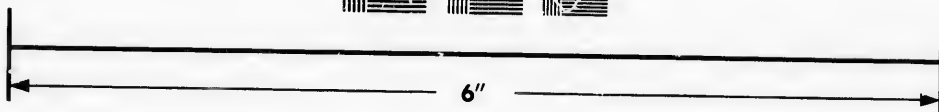
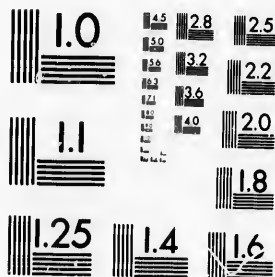


IMAGE EVALUATION TEST TARGET (MT-3)



Photographic
Sciences
Corporation

23 WEST MAIN STREET
WEBSTER, N.Y. 14580
(716) 872-4503

**CIHM/ICMH
Microfiche
Series.**

**CIHM/ICMH
Collection de
microfiches.**



Canadian Institute for Historical Microreproductions / Institut canadien de microreproductions historiques

© 1986

Technical and Bibliographic Notes/Notes techniques et bibliographiques

The Institute has attempted to obtain the best original copy available for filming. Features of this copy which may be bibliographically unique, which may alter any of the images in the reproduction, or which may significantly change the usual method of filming, are checked below.

L'Institut a microfilmé le meilleur exemplaire qu'il lui a été possible de se procurer. Les détails de cet exemplaire qui sont peut-être uniques du point de vue bibliographique, qui peuvent modifier une image reproduite, ou qui peuvent exiger une modification dans la méthode normale de filmage sont indiqués ci-dessous.

- Coloured covers/
Couverture de couleur
- Covers damaged/
Couverture endommagée
- Covers restored and/or laminated/
Couverture restaurée et/ou pelliculée
- Cover title missing/
Le titre de couverture manque
- Coloured maps/
Cartes géographiques en couleur
- Coloured ink (i.e. other than blue or black)/
Encre de couleur (i.e. autre que bleue ou noire)
- Coloured plates and/or illustrations/
Planches et/ou illustrations en couleur
- Bound with other material/
Relié avec d'autres documents
- Tight binding may cause shadows or distortion along interior margin/
La reliure serrée peut causer de l'ombre ou de la distorsion le long de la marge intérieure
- Blank leaves added during restoration may appear within the text. Whenever possible, these have been omitted from filming/
Il se peut que certaines pages blanches ajoutées lors d'une restauration apparaissent dans le texte, mais, lorsque cela était possible, ces pages n'ont pas été filmées.
- Additional comments: / [Printed ephemera] [2] p.
Commentaires supplémentaires:

- Coloured pages/
Pages de couleur
- Pages damaged/
Pages endommagées
- Pages restored and/or laminated/
Pages restaurées et/ou pelliculées
- Pages discoloured, stained or foxed/
Pages décolorées, tachetées ou piquées
- Pages detached/
Pages détachées
- Showthrough/
Transparence
- Quality of print varies/
Qualité inégale de l'impression
- Includes supplementary material/
Comprend du matériel supplémentaire
- Only edition available/
Seule édition disponible
- Pages wholly or partially obscured by errata slips, tissues, etc., have been refilmed to ensure the best possible image/
Les pages totalement ou partiellement obscurcies par un feuillet d'errata, une pelure, etc., ont été filmées à nouveau de façon à obtenir la meilleure image possible.

This item is filmed at the reduction ratio checked below/
Ce document est filmé au taux de réduction indiqué ci-dessous.

10X	12X	14X	16X	18X	20X	22X	24X	26X	28X	30X	32X
<input type="checkbox"/>	<input type="checkbox"/>	<input type="checkbox"/>	<input type="checkbox"/>	<input type="checkbox"/>	<input type="checkbox"/>	<input type="checkbox"/>	<input type="checkbox"/>	<input checked="" type="checkbox"/>	<input type="checkbox"/>	<input type="checkbox"/>	<input type="checkbox"/>

The copy filmed here has been reproduced thanks to the generosity of:

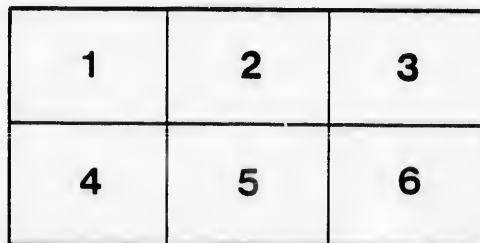
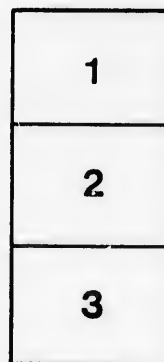
D. B. Weldon Library
University of Western Ontario
(Regional History Room)

The images appearing here are the best quality possible considering the condition and legibility of the original copy and in keeping with the filming contract specifications.

Original copies in printed paper covers are filmed beginning with the front cover and ending on the last page with a printed or illustrated impression, or the back cover when appropriate. All other original copies are filmed beginning on the first page with a printed or illustrated impression, and ending on the last page with a printed or illustrated impression.

The last recorded frame on each microfiche shall contain the symbol \rightarrow (meaning "CONTINUED"), or the symbol ∇ (meaning "END"), whichever applies.

Maps, plates, charts, etc., may be filmed at different reduction ratios. Those too large to be entirely included in one exposure are filmed beginning in the upper left hand corner, left to right and top to bottom, as many frames as required. The following diagrams illustrate the method:



L'exemplaire filmé fut reproduit grâce à la générosité de:

D. B. Weldon Library
University of Western Ontario
(Regional History Room)

Les images suivantes ont été reproduites avec le plus grand soin, compte tenu de la condition et de la netteté de l'exemplaire filmé, et en conformité avec les conditions du contrat de filmage.

Les exemplaires originaux dont la couverture en papier est imprimée sont filmés en commençant par le premier plat et en terminant soit par la dernière page qui comporte une empreinte d'impression ou d'illustration, soit par le second plat, selon le cas. Tous les autres exemplaires originaux sont filmés en commençant par la première page qui comporte une empreinte d'impression ou d'illustration et en terminant par la dernière page qui comporte une telle empreinte.

Un des symboles suivants apparaîtra sur la dernière image de chaque microfiche, selon le cas: le symbole \rightarrow signifie "A SUIVRE", le symbole ∇ signifie "FIN".

Les cartes, planches, tableaux, etc., peuvent être filmés à des taux de réduction différents. Lorsque le document est trop grand pour être reproduit en un seul cliché, il est filmé à partir de l'angle supérieur gauche, de gauche à droite, et de haut en bas, en prenant le nombre d'images nécessaire. Les diagrammes suivants illustrent la méthode.

ESTABLISHED 1836.

ESTABLISHED 1836.

Hamilton Agricultural Works.

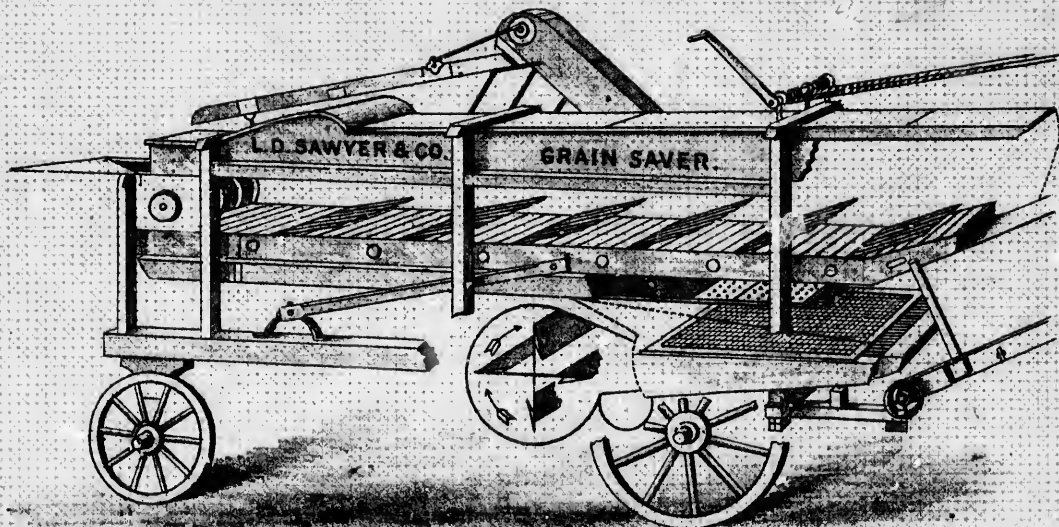
L. D. SAWYER & Co.,

Sole Manufacturers of the

Matchless Grain Saving, Time Saving, Labor Saving, and Money Making

Grain Saver Threshing Machine

Comprising Complete Horse Power Establishments, Complete Steam Power Establishments, Separators Expressly for Horse or Steam Power, Improved "Mounted & Down" Horse Powers; also Reapers, Mowers, and Clover Mills.



INSIDE VIEW OF GRAIN SAVER.

How and Where the "Grain Saver" Thresher Surpasses Canvas Belt and Other Separators.

Secures Work when others are Idle.

Never passes over a Job.

No Time Lost by Break Down.

Runs Steadily until the Job is Finished.

Has the Best Reputation in Canada.

Farmers prefer it to all others.

Is Always Ready for Removal.

All Changes Easily and Quickly Made.

Always the First and Last Working.

Has the Least Number of Parts.

Can Always Secure Old Jobs.

Is Better Value for the Money than all Others.

Has all the Latest Improvements.

Has the Largest Capacity for Work.

Is the Best Adapted for Steam Power.

Will do More Work in a given length of time.

Built on the Best Mechanical Principles.

Made from First-Class Material.

Made to Work and not to look at.

Simplicity of Construction.

Durability and Wear.

Thrashing all kinds of Grain.

Thrashing Flax, Timothy, Millet, Clover, &c.

Cleaning all Grains and Seeds.

Patent Folding Stacks.

Patent Concave Adjuster.

Easy to Manage and Operate.

No Letterings to Clean up.

Thrashing Fast and Clean.

Saving Men.

Easy on Horses.

Thrashing Wet and Shrunken Grain.

Small Amount of Repairs Needed.

Cleaning Fit for Market.

Saving Time and Money.

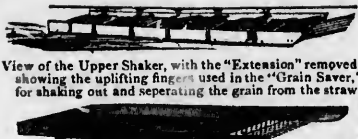
Saving Grain.

The Only Patent Pea Thresher.

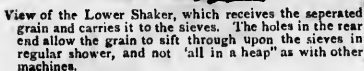
Thrashing in Side or Head Winds.

Belts do not come off.

Less Journals to wear out.



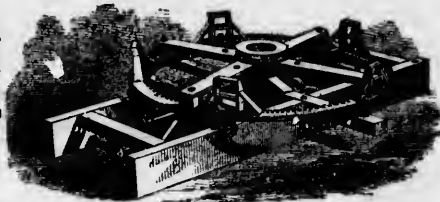
View of the Upper Shaker, with the "Extension" removed, showing the lifting fingers used in the "Grain Saver," for shaking out and separating the grain from the straw.



The Separating Parts of our "Grain Saver."



Our "Grain Saver" Threshing Separator.



Horse Power.

What More Could be Said ?

YARMOUTH, September 3rd, 1879.

L. D. SAWYER & Co.,

Dear Sir:—The "Grain Saver" that Mr. Williams bought from you to run with my Engine, gives the very best satisfaction. We threshed 100 bushels of oats in 28 minutes and 530 bushels in 2 hours. I have previous to this, for 7 years run the Buffalo Pitts Separator and prefer the "Grain Saver." You will hear from me again.

Yours truly,

THOMAS E. WHITE.

ROTHSAY, August 24th, 1880.

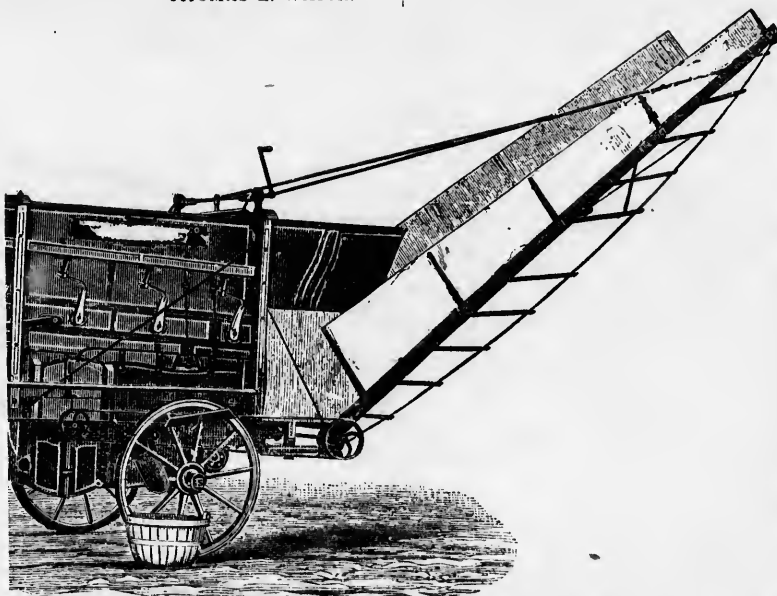
MESSRS. L. D. SAWYER & Co., Hamilton,

Sirs:—We are glad to be able to say the Separator is giving perfect satisfaction. We threshed some 800 bushels in less than ten hours. If we had two Threshers we could get plenty to do. We can recommend any intending purchaser to buy your machine. The public are more than pleased with our work.

We are yours, etc.,

FREELAND & GRAY.

HAMILTON
AGRICULTURAL WORKS,
L. D. SAWYER & CO.,



Section of "Grain Saver" showing the stacker at work and its attachments, the Chaff Board & Windlass for lowering Stackers.

HAMILTON, ONT., CANADA.

Office and Works: FOOT OF WELLINGTON STREET.

SEND FOR CIRCULAR AND PRICE LIST.

SAUGEN, Aug. 21st, 1880.

MESSRS L. D. SAWYER & Co ,

Dear Sir:—I herewith enclose you settlement for Power, which I am pleased to say gives me perfect satisfaction. Would have sent settlement before, but wished first to have a fair trial, which I have now had with above results.

Yours truly,

W. L. MURCAR.

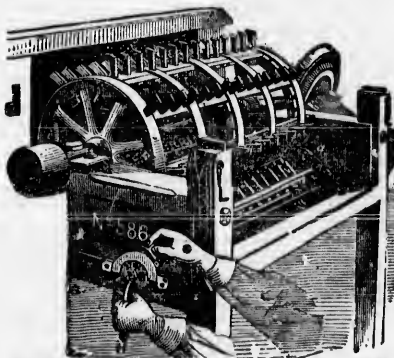
BRANTFORD, Sept. 6, 1880.

MESSRS. L. D. SAWYER & Co ,

Dear Sir:—I think the "Grain Saver" is stronger, and more durable than any other machine made, it does better work in wet grain than any machine I ever used or ever saw run. I have never had men around me to give me enough grain and take it away that would stand it all day. It will clean fit for market when properly managed. Altogether my machine is a perfect success, and highly recommend your machine to all those needing a first-class Thresher.

Yours truly,

A. COOPMAN.



Our Improved Concave Adjuster.



Section of "Grain Saver" showing Side Gear, Crank Shaft & Tool Box.

