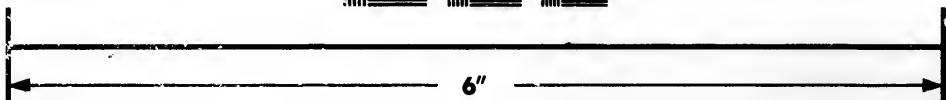
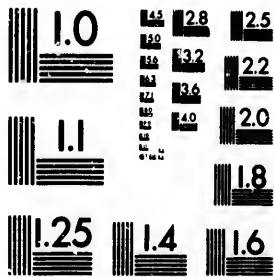


**IMAGE EVALUATION  
TEST TARGET (MT-3)**



**Photographic  
Sciences  
Corporation**

23 WEST MAIN STREET  
WEBSTER, N.Y. 14590  
(716) 872-4503

128 125  
122  
10

**CIHM/ICMH  
Microfiche  
Series.**

**CIHM/ICMH  
Collection de  
microfiches.**



**Canadian Institute for Historical Microreproductions / Institut canadien de microreproductions historiques**

01 III

**© 1984**

Technical and Bibliographic Notes/Notes techniques et bibliographiques

The Institute has attempted to obtain the best original copy available for filming. Features of this copy which may be bibliographically unique, which may alter any of the images in the reproduction, or which may significantly change the usual method of filming, are checked below.

L'Institut a microfilmé le meilleur exemplaire qu'il lui a été possible de se procurer. Les détails de cet exemplaire qui sont peut-être uniques du point de vue bibliographique, qui peuvent modifier une image reproduite, ou qui peuvent exiger une modification dans la méthode normale de filmage sont indiqués ci-dessous.

- |  |  |
|--|--|
| <input type="checkbox"/> Coloured covers/<br>Couverture de couleur   | <input type="checkbox"/> Coloured pages/<br>Pages de couleur   |
| <input type="checkbox"/> Covers damaged/<br>Couverture endommagée  | <input type="checkbox"/> Pages damaged/<br>Pages endommagées   |
| <input type="checkbox"/> Covers restored and/or laminated/<br>Couverture restaurée et/ou pelliculée  | <input type="checkbox"/> Pages restored and/or laminated/<br>Pages restaurées et/ou pelliculées  |
| <input type="checkbox"/> Cover title missing/<br>Le titre de couverture manque   | <input checked="" type="checkbox"/> Pages discoloured, stained or foxed/<br>Pages décolorées, tachetées ou piquées   |
| <input type="checkbox"/> Coloured maps/<br>Cartes géographiques en couleur   | <input type="checkbox"/> Pages detached/<br>Pages détachées  |
| <input type="checkbox"/> Coloured ink (i.e. other than blue or black)/<br>Encre de couleur (i.e. autre que bleue ou noire)   | <input checked="" type="checkbox"/> Showthrough/<br>Transparence   |
| <input type="checkbox"/> Coloured plates and/or illustrations/<br>Planches et/ou illustrations en couleur  | <input type="checkbox"/> Quality of print varies/<br>Qualité inégale de l'impression   |
| <input type="checkbox"/> Bound with other material/<br>Relié avec d'autres documents   | <input type="checkbox"/> Includes supplementary material/<br>Comprend du matériel supplémentaire   |
| <input type="checkbox"/> Tight binding may cause shadows or distortion<br>along interior margin/<br>La reliure serrée peut causer de l'ombre ou de la<br>distortion le long de la marge intérieure   | <input type="checkbox"/> Only edition available/<br>Seule édition disponible   |
| <input type="checkbox"/> Blank leaves added during restoration may<br>appear within the text. Whenever possible, these<br>have been omitted from filming/<br>Il se peut que certaines pages blanches ajoutées<br>lors d'une restauration apparaissent dans le texte,<br>mais, lorsque cela était possible, ces pages n'ont<br>pas été filmées. | <input type="checkbox"/> Pages wholly or partially obscured by errata<br>slips, tissues, etc., have been refilmed to<br>ensure the best possible image/<br>Les pages totalement ou partiellement<br>obscurcies par un feuillet d'errata, une pelure,<br>etc., ont été filmées à nouveau de façon à<br>obtenir la meilleure image possible. |
| <input type="checkbox"/> Additional comments:/<br>Commentaires supplémentaires:  |  |

This item is filmed at the reduction ratio checked below/  
Ce document est filmé au taux de réduction indiqué ci-dessous.

10X	14X	18X	22X	26X	30X
<input type="checkbox"/>	<input type="checkbox"/>	<input type="checkbox"/>	<input checked="" type="checkbox"/>	<input type="checkbox"/>	<input type="checkbox"/>
12X	16X	20X	24X	28X	32X

The copy filmed here has been reproduced thanks to the generosity of:

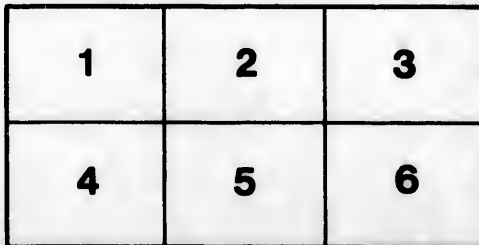
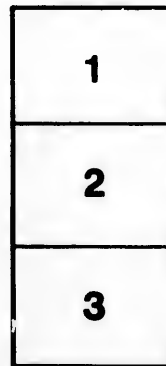
Library of the Public  
Archives of Canada

The images appearing here are the best quality possible considering the condition and legibility of the original copy and in keeping with the filming contract specifications.

Original copies in printed paper covers are filmed beginning with the front cover and ending on the last page with a printed or illustrated impression, or the back cover when appropriate. All other original copies are filmed beginning on the first page with a printed or illustrated impression, and ending on the last page with a printed or illustrated impression.

The last recorded frame on each microfiche shall contain the symbol  $\rightarrow$  (meaning "CONTINUED"), or the symbol  $\nabla$  (meaning "END"), whichever applies.

Maps, plates, charts, etc., may be filmed at different reduction ratios. Those too large to be entirely included in one exposure are filmed beginning in the upper left hand corner, left to right and top to bottom, as many frames as required. The following diagrams illustrate the method:



L'exemplaire filmé fut reproduit grâce à la générosité de:

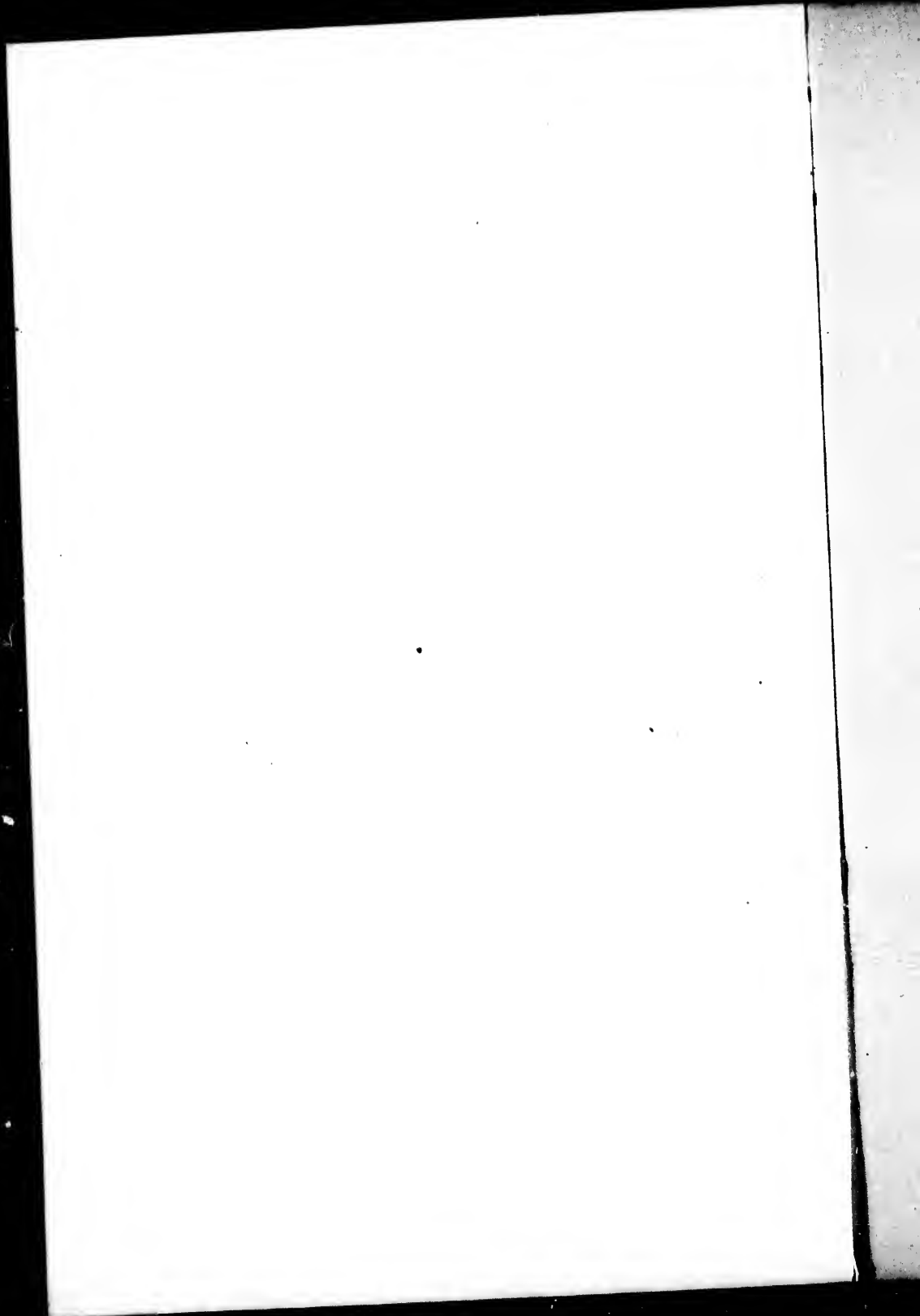
La bibliothèque des Archives  
publiques du Canada

Les images suivantes ont été reproduites avec le plus grand soin, compte tenu de la condition et de la netteté de l'exemplaire filmé, et en conformité avec les conditions du contrat de filmage.

Les exemplaires originaux dont la couverture en papier est imprimée sont filmés en commençant par le premier plat et en terminant soit par la dernière page qui comporte une empreinte d'impression ou d'illustration, soit par le second plat, selon le cas. Tous les autres exemplaires originaux sont filmés en commençant par la première page qui comporte une empreinte d'impression ou d'illustration et en terminant par la dernière page qui comporte une telle empreinte.

Un des symboles suivants apparaîtra sur la dernière image de chaque microfiche, selon le cas: le symbole  $\rightarrow$  signifie "A SUIVRE", le symbole  $\nabla$  signifie "FIN".

Les cartes, planches, tableaux, etc., peuvent être filmés à des taux de réduction différents. Lorsque le document est trop grand pour être reproduit en un seul cliché, il est filmé à partir de l'angle supérieur gauche, de gauche à droite, et de haut en bas, en prenant le nombre d'images nécessaire. Les diagrammes suivants illustrent la méthode.



**PROSPECTUS.**

---

**PATENT**  
**WOODEN RAILWAY.**

---

**TORONTO:**  
**BROWN'S PRINTING ESTABLISHMENT, KING-STREET EAST.**  
**1863.**

1917-18

11

1917-18

1917-18

I  
t  
s  
e  
l

## PROSPECTUS

OF

# PATENT WOODEN RAILWAY.

---

THE object of the Proprietors of the Patent Wooden Railway is, to place before the Public the many advantages in Railway locomotion to be obtained by the substitution of *Wooden* for Iron Rails according to their system, and to demonstrate its durability, economy, and power.

This system consists in the preparation of the Timber to be used according to the Patented process of Charles Payne, of London, against "*wet and dry rot, the attacks of Insects,*" &c., and the application of Valentine's patent "*Guide Wheel and Wooden Rail.*"

The adoption of the wooden rail, resting on a great frame-work of wood, is undeniably a recurrence to the wisdom of our ancestors; but under such peculiar modifications as made such recurrence eminently desirable, especially in a climate of such sudden extremes as that of America. These modifications are, firstly, the chemical transmutation of the fibres of the wood into a more durable, hard, and impenetrable substance.



Secondly, the employment of Valentine's patent guide wheels, before and behind each carriage, as a substitute for the flange, which is a main cause of the wear and tear on the existing Railways. By means of the guide wheels, the carriage wheels would be quite flat, obviating all abrasion of the wood, without producing oscillation, and under such circumstances each wheel would act independently, as with the wheels of ordinary carriages, and Railway travelling rendered smooth and noiseless.

By the process of Paynizing the wood becomes prepared to resist the action of wet and dry rot, impervious to the attacks of Insects, and is rendered much less inflammable. It is effected by placing the Timber in an air-tight cylinder, and by exhaustion and pressure forcing into its pores Sulphate of Iron and Lime in solution. When these two salts come into contact, they decompose each other, and produce an insoluble substance, permeating and fossilizing it.

The great advantage of wood over iron, presuming its durability to be the same, is the adhesiveness of its surface, involving about double the tractive power of Iron. Much fallacy existed on this subject, which has been expelled by recent and numerous experiments in England.

This objection was based on a confusion of friction with adhesion, which is increased by the mode of cutting out the Rails at an angle of forty-five degrees with the direction of the fibres of the wood. Upon an iron rail the weight is necessarily increased in an inordinate

degree, to counterbalance the want of adhesiveness of surface. If the Engine was prevented from moving forward by some unmovable obstacle, and was also powerful enough to overcome the adhesion, the wheels of the engine would revolve even though the carriage made no progress. If the obstacle was diminished, so that it would give way before the adhesion was overcome, the engine would advance. The magnitude of the obstacle which can thus be removed is to be measured by the amount of adhesion; for if the resistance is greater than the adhesion it will not be removed. The total amount of resistance to progress is correctly represented by such an imaginary obstacle, and there is an amount of train, which an engine of a given weight will not draw, whatever its power, for its wheels will rather revolve than draw the train. This adhesion, and therefore source of tractive power is, with *Iron wheels* on a *Wood surface*, found to be *double* that of *Iron*: in ascending an incline, the engine has not only to draw but to lift.

Increase the bite or adhesion, and you may increase the steepness of the gradients, and greatly diminish the weight of your carriages, which, as well as the engines, will certainly (from the resilient character of wood) last twice as long, with greater smoothness and less noise, than if worked on iron rails. Thus, an immense saving may be effected in cuttings and embankments, as well as in the carrying establishment and in the locomotive power.

The Red Beech, or Sugar Maple, so abundant in many parts of the United States and Canada, is preferred for

the *rail*, from its toughness, specific gravity, hardness, and non-liability to laminate. Any "Paynized" timber may be used for the other works.

Experiment has shown that the prepared Beech has recovered the deflexion of three-eighths of an inch, resulting from a pressure of 140 tons upon the tire of a wheel; and that it is stronger than Oak in the ratio of 103 to 100; and upon an experimental Railway in London, carriages had passed over it *twenty-eight thousand* times (equal to seven years' traffic) without obliterating the saw marks, and *thirty-seven thousand tons* of goods were transported without any perceptible effect.

In like manner, it was ascertained that curves of 700 feet radius, and less, can be rapidly traversed without the possibility of the engine running off the rails, from the peculiar construction of the wheels; and gradients of 1 in 9, 1 in 24, and 1 in 95, were overcome, without any previous impetus, by the steam being turned on at the commencement of the incline: the break, too, was constantly in use, without producing the least abrasion.

The following is the result of experiments, showing the superiority of "Paynized" over unprepared timber. At a bearing of 2 feet 10 inches, a piece of Pine 1 inch by 1 inch, under a pressure of 6 inches, bore 7 lbs. more than the unprepared piece (similar in all other respects); 1½ inches by 1½ inches, 28 lbs.; and 1½ inches by 1½ inches, 70 lbs.

The quantity of timber and material necessary for one mile of "Paynized" wooden rail, chairs, sleepers, &c., as

designed by John S. Valentine, Civil Engineer, suitable to his patent guide-wheel, is as follows:—

2640 Cubic feet Red Beech in rails, 5 x 5 in the clear; 6 x 6 including waste.

1320 Cubic feet longitudinal chair of White Pine,  $2\frac{1}{2}$  x  $2\frac{1}{2}$ , or 3 x 3 with waste.

4436 Cubic feet longitudinal sleepers,  $5\frac{1}{2}$  inches by 11 inches, White or Yellow Pine.

587 Tie-struts, 9 feet apart, 5 inches by 4 inches by 5 feet, 4 feet  $8\frac{1}{2}$  inches gauge, 391 Cubic feet.

587 Transverse sleepers, 6 inches by 9 inches by 10 feet, 2199 Cubic feet.

3520 Iron bolts, with nuts.

1174 Wooden keys to transverse sleepers.

The advantages, then, and superiority of Railways upon this system, may be summed up thus:—As rendering unnecessary heavy embankments, fillings, cuttings, and tunnels;—as the means of securing cheap fares;—as greatly reducing the annual maintenance;—as greatly diminishing the cost of construction to formation level, by admitting sharper curves and steeper gradients;—as greatly lessening noise, and producing greater safety, ease and comfort in travelling;—and as preventing the possibility of accidents by the breaking of wheels or axles, or by the engine running off the rail.

TORONTO, February 15, 1853.

