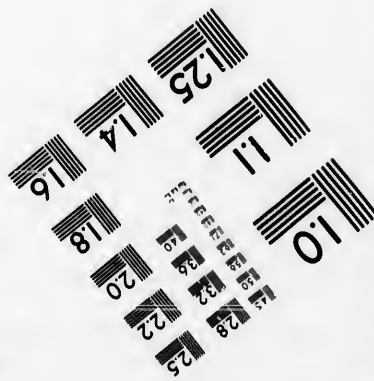
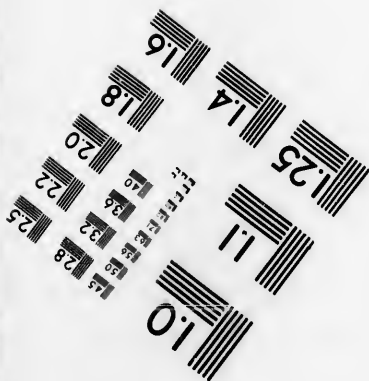
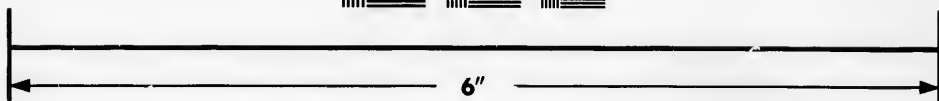
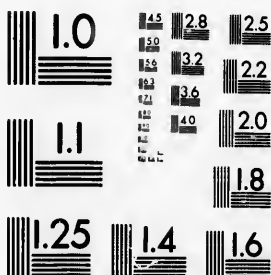


**IMAGE EVALUATION
TEST TARGET (MT-3)**



**Photographic
Sciences
Corporation**

23 WEST MAIN STREET
WEBSTER, N.Y. 14580
(716) 872-4503

**CIHM
Microfiche
Series
(Monographs)**

**ICMH
Collection de
microfiches
(monographies)**



Canadian Institute for Historical Microreproductions / Institut canadien de microreproductions historiques

© 1992

Technical and Bibliographic Notes / Notes techniques et bibliographiques

The Institute has attempted to obtain the best original copy available for filming. Features of this copy which may be bibliographically unique, which may alter any of the images in the reproduction, or which may significantly change the usual method of filming, are checked below.

L'Institut a microfilmé le meilleur exemplaire qu'il lui a été possible de se procurer. Les détails de cet exemplaire qui sont peut-être uniques du point de vue bibliographique, qui peuvent modifier une image reproduite, ou qui peuvent exiger une modification dans la méthode normale de filmage sont indiqués ci-dessous.

- Coloured covers/
Couverture de couleur
- Covers damaged/
Couverture endommagée
- Covers restored and/or laminated/
Couverture restaurée et/ou pelliculée
- Cover title missing/
Le titre de couverture manque
- Coloured maps/
Cartes géographiques en couleur
- Coloured ink (i.e. other than blue or black)/
Encre de couleur (i.e. autre que bleue ou noire)
- Coloured plates and/or illustrations/
Planches et/ou illustrations en couleur
- Bound with other material/
Relié avec d'autres documents
- Tight binding may cause shadows or distortion along interior margin/
La reliure serrée peut causer de l'ombre ou de la distorsion le long de la marge intérieure
- Blank leaves added during restoration may appear within the text. Whenever possible, these have been omitted from filming/
Il se peut que certaines pages blanches ajoutées lors d'une restauration apparaissent dans le texte, mais, lorsque cela était possible, ces pages n'ont pas été filmées.
- Additional comments:/
Commentaires supplémentaires:

- Coloured pages/
Pages de couleur
- Pages damaged/
Pages endommagées
- Pages restored and/or laminated/
Pages restaurées et/ou pelliculées
- Pages discoloured, stained or foxed/
Pages décolorées, tachetées ou piquées
- Pages detached/
Pages détachées
- Showthrough/
Transparence
- Quality of print varies/
Qualité inégale de l'impression
- Continuous pagination/
Pagination continue
- Includes index(es)/
Comprend un (des) index
- Title on header taken from:/
Le titre de l'en-tête provient:
- Title page of issue/
Page de titre de la livraison
- Caption of issue/
Titre de départ de la livraison
- Mashead/
Générique (périodiques) de la livraison

This item is filmed at the reduction ratio checked below/
Ce document est filmé au taux de réduction indiqué ci-dessous.

10X	12X	14X	16X	18X	20X	22X	24X	26X	28X	30X	32X
										✓	

The copy filmed here has been reproduced thanks to the generosity of:

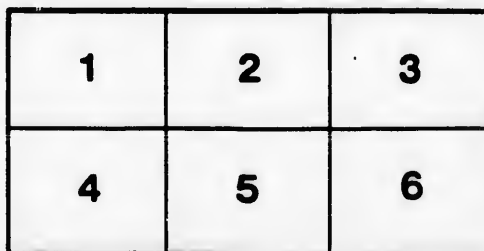
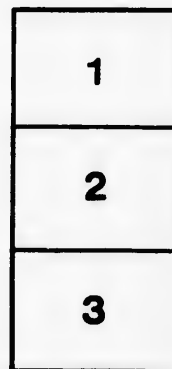
Library of the National
Archives of Canada

The images appearing here are the best quality possible considering the condition and legibility of the original copy and in keeping with the filming contract specifications.

Original copies in printed paper covers are filmed beginning with the front cover and ending on the last page with a printed or illustrated impression, or the back cover when appropriate. All other original copies are filmed beginning on the first page with a printed or illustrated impression, and ending on the last page with a printed or illustrated impression.

The last recorded frame on each microfiche shall contain the symbol \rightarrow (meaning "CONTINUED"), or the symbol ∇ (meaning "END"), whichever applies.

Maps, plates, charts, etc., may be filmed at different reduction ratios. Those too large to be entirely included in one exposure are filmed beginning in the upper left hand corner, left to right and top to bottom, as many frames as required. The following diagrams illustrate the method:



L'exemplaire filmé fut reproduit grâce à la générosité de:

La bibliothèque des Archives
nationales du Canada

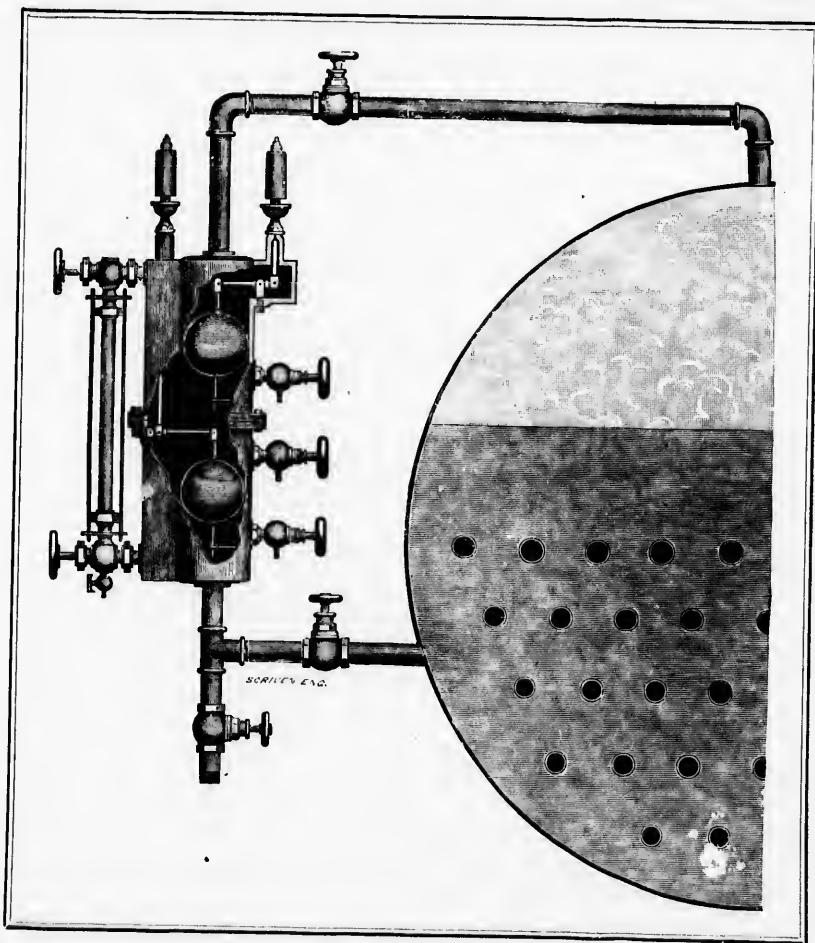
Les images suivantes ont été reproduites avec le plus grand soin, compte tenu de la condition et de la netteté de l'exemplaire filmé, et en conformité avec les conditions du contrat de filmage.

Les exemplaires originaux dont la couverture en papier est imprimée sont filmés en commençant par le premier plat et en terminant soit par la dernière page qui comporte une empreinte d'impression ou d'illustration, soit par le second plat, selon le cas. Tous les autres exemplaires originaux sont filmés en commençant par la première page qui comporte une empreinte d'impression ou d'illustration et en terminant par la dernière page qui comporte une telle empreinte.

Un des symboles suivants apparaîtra sur la dernière image de chaque microfiche, selon le cas: le symbole \rightarrow signifie "A SUIVRE", le symbole ∇ signifie "FIN".

Les cartes, planches, tableaux, etc., peuvent être filmés à des taux de réduction différents. Lorsque le document est trop grand pour être reproduit en un seul cliché, il est filmé à partir de l'angle supérieur gauche, de gauche à droite, et de haut en bas, en prenant le nombre d'images nécessaire. Les diagrammes suivants illustrent la méthode.

ILLUSTRATED CATALOGUE
— OF —
PALMER'S PATENT
HIGH AND LOW WATER ALARM GAUGE



PROTECT YOUR BOILERS.

PREVENT EXPLOSIONS WITH PALMER'S PATENT HIGH AND LOW WATER ALARM GAUGE

— IT SAVES MONEY, PROPERTY AND LOSS OF LIFE —

PALMER'S PATENT

HIGH AND LOW WATER ALARM GAUGE.

IN presenting this circular to the public, I wish to say a word by way of explanation, I having been an engineer for over eighteen years, both by practice and theory, and having had the charge of a large number of steam boilers and engines, both stationary and marine, and *know* the great necessity and want of having an automatic alarm attached to *every* steam boiler.

It is a well-known fact that often the care of steam boilers are entrusted to men of intemperate habits and incompetency, which endangers human life and property. By this patent the whistle will blow and continue doing so, and every one in the factory will know that something is wrong, and it can be rectified in time to save accident and damage.

In offering this alarm gauge to the public, I feel confident, after long study and experience, that it is the very best gauge in existence. It has no equal. Its principles are entirely new and its workings are based on the very best and latest scientific principles.

IT IS

THE SUREST, SIMPLEST AND CHEAPEST GAUGE

EVER MANUFACTURED,

CANNOT CORRODE OR GET OUT OF ORDER. IT HAS NO RIVAL.

ITS ADVANTAGES ARE

FIRST—By not letting the water get low in the boiler, thereby saving it from getting burnt or exploded.

SECONDLY—By not letting the water in the boiler get too high, reducing the steam space, and causing wet steam; also water drafting over into the engine, causing large breakdowns and destroying property, as high water has so frequently done.

THIRD—By keeping the water nearly at one level in the boiler at all times, thus saving a large amount of fuel and ensuring good dry steam, which, coupled with the large saving in fuel, will pay for itself in less than a month. Nobody should endanger their property and lives where so sure a preventative can be procured for so trifling an amount.

Yours respectfully,

J. C. PALMER,

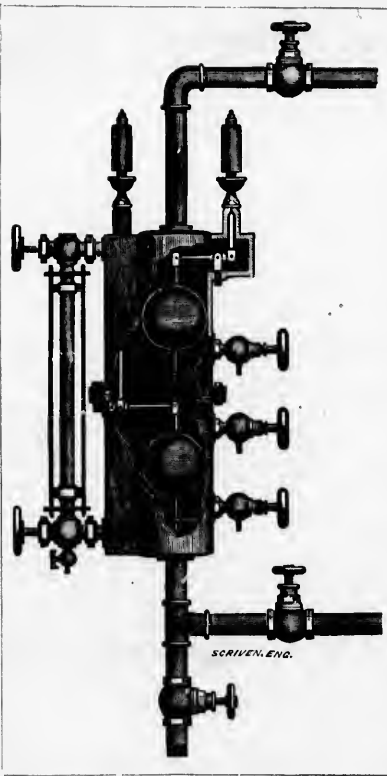
M. E.

J. C. Palmer
Superintendent, 10-Main St. N. Y.

DESCRIPTION

THIS ENTIRELY NEW INVENTION,

Consisting of hardened floats and the arrangement of levers, valves and fulcrums are such that it is impossible for it under any circumstance to bind or stick, corrode or get out of order, the balls being made of copper; levers, valves and all external connections are made of the best steam metal. It is pronounced by scientists and practical men, and by those who best understand alarms, to be the best alarm gauge in existence, its workings being absolutely perfect. It is so arranged, that should the water supply be shut off, the pump or injector get out of order, the boiler spring a leak, or should the water from any other cause get down to the lower gauge cock, or down to whatever point the valve is set at, the steam whistle for low water will blow an alarm and continue to blow until the water is put in the boiler. It will indicate at all times the exact height of solid water in the boiler, regardless of foam; so with this protection the boiler can never be injured or exploded on account of low water. Then, when the water raises in the boiler above the proper level or height desired, the high water alarm will begin to blow and will continue to blow until the water recedes or the fireman opens his blow-off cock. This also reminds him that he must blow off his boilers, thus preventing sediment and incrustation to form in the bottom of the boiler. It also prevents



the water from raising too high, causing wet steam and often great damage to the engines and machinery. As will be seen by the cuts, the floats are at one end and the fulcrum is at the other, and the valves being close to the fulcrum gives the float sufficient leverage, that when the water bears against it, it opens the valve and blows. The alarm whistles under 1,000 lbs. pressure, which is more than any steam boiler will stand.

The floats are hardened by an entirely new process, which leaves them perfectly round and smooth, and they are tested outside and inside by a pressure of 300 lbs. to the square inch. They are then plated with nickel, so that the steam cannot oxidize the spelter.

NO FLOAT OF THIS PATENT EVER HAS OR EVER CAN COLLAPSE OR FAIL.

It is not necessary to shut down the boiler to examine the internal parts of the gauge. All you have to do is shut off the valve between that and the boiler. The height of the water in the boiler is at all times indicated in the glass, and the water cannot leave the glass without the alarm being sounded.

The glass gauge and alarm are separate, and each complete in itself. If the glass should get broken from any cause, shut off the valve, and still you have a perfect alarm gauge. No such gauge has ever been offered to the public at any price or at any time.

60.00 per set
50.00 per set

NE.

been
e of a
great

operate
e will
it can

that it
kings

GE

AL.

burnt

e, and
croying

large
ay for
a pre-

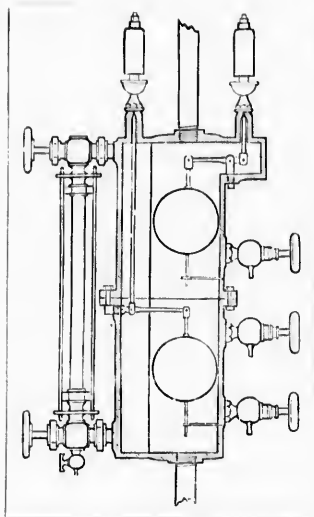
M. E.

10-11-1884

ENGINEERS

LIKE THEM,

Because they give timely warning of approaching danger. The whistle commences gently, and if disregarded, will soon alarm the whole establishment. It also, in many cases, saves his reputation.



PROPRIETORS

LIKE THEM,

Because they save their boilers from injury, and their engines from expensive breakdowns, and insure them good dry steam by keeping the water at the proper level in the boiler, also saving fuel, therefore making their boilers last longer.

With this protector, the flues, crown sheets or sides of the boiler can never be burned or injured for want of water. Neither can the boiler be exploded. Every gauge is provided with a test blow-off valve the full size of the pipe, so it can be tested as often as desired. It cannot be tampered with. It is easy to attach to any boiler.

EVERY GAUGE IS WARRANTED FOR FIVE YEARS.

For prices and full particulars, apply to

THE ONTARIO BOILER PROTECTIVE CO.'S OFFICE

No. 230 James Street North,

HAMILTON.

A. VINCENT, Manager.

