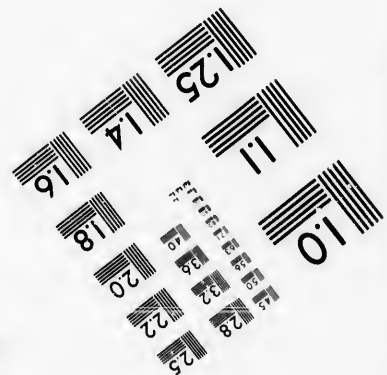
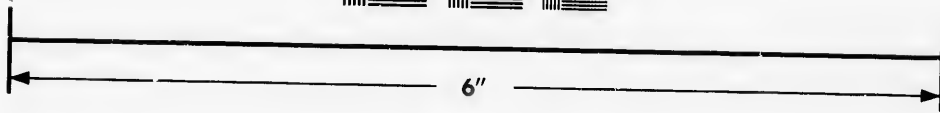
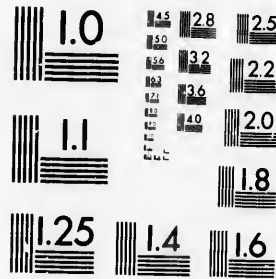


**IMAGE EVALUATION
TEST TARGET (MT-3)**



**Photographic
Sciences
Corporation**

23 WEST MAIN STREET
WEBSTER, N.Y. 14580
(716) 872-4503

10
16
18
20
22
24
25

**CIHM/ICMH
Microfiche
Series.**

**CIHM/ICMH
Collection de
microfiches.**



Canadian Institute for Historical Microreproductions / Institut canadien de microreproductions historiques

10
57

© 1986

Technical and Bibliographic Notes/Notes techniques et bibliographiques

The Institute has attempted to obtain the best original copy available for filming. Features of this copy which may be bibliographically unique, which may alter any of the images in the reproduction, or which may significantly change the usual method of filming, are checked below.

L'Institut a microfilmé le meilleur exemplaire qu'il lui a été possible de se procurer. Les détails de cet exemplaire qui sont peut-être uniques du point de vue bibliographique, qui peuvent modifier une image reproduite, ou qui peuvent exiger une modification dans la méthode normale de filmage sont indiqués ci-dessous.

- | | |
|--|--|
| <input type="checkbox"/> Coloured covers/
Couverture de couleur | <input type="checkbox"/> Coloured pages/
Pages de couleur |
| <input type="checkbox"/> Covers damaged/
Couverture endommagée | <input type="checkbox"/> Pages damaged/
Pages endommagées |
| <input type="checkbox"/> Covers restored and/or laminated/
Couverture restaurée et/ou pelliculée | <input type="checkbox"/> Pages restored and/or laminated/
Pages restaurées et/ou pelliculées |
| <input type="checkbox"/> Cover title missing/
Le titre de couverture manque | <input checked="" type="checkbox"/> Pages discoloured, stained or foxed/
Pages décolorées, tachetées ou piquées |
| <input type="checkbox"/> Coloured maps/
Cartes géographiques en couleur | <input type="checkbox"/> Pages detached/
Pages détachées |
| <input type="checkbox"/> Coloured ink (i.e. other than blue or black)/
Encre de couleur (i.e. autre que bleue ou noire) | <input checked="" type="checkbox"/> Showthrough/
Transparence |
| <input type="checkbox"/> Coloured plates and/or illustrations/
Planches et/ou illustrations en couleur | <input type="checkbox"/> Quality of print varies/
Qualité inégale de l'impression |
| <input type="checkbox"/> Bound with other material/
Relié avec d'autres documents | <input type="checkbox"/> Includes supplementary material/
Comprend du matériel supplémentaire |
| <input type="checkbox"/> Tight binding may cause shadows or distortion
along interior margin/
La reliure serrée peut causer de l'ombre ou de la
distorsion le long de la marge intérieure | <input type="checkbox"/> Only edition available/
Seule édition disponible |
| <input type="checkbox"/> Blank leaves added during restoration may
appear within the text. Whenever possible, these
have been omitted from filming/
Il se peut que certaines pages blanches ajoutées
lors d'une restauration apparaissent dans le texte,
mais, lorsque cela était possible, ces pages n'ont
pas été filmées. | <input type="checkbox"/> Pages wholly or partially obscured by errata
slips, tissues, etc., have been refilmed to
ensure the best possible image/
Les pages totalement ou partiellement
obscurcies par un feuillet d'errata, une pelure,
etc., ont été filmées à nouveau de façon à
obtenir la meilleure image possible. |
| <input checked="" type="checkbox"/> Additional comments:/ [Printed ephemera] [4] p.
Commentaires supplémentaires: | |

This item is filmed at the reduction ratio checked below/
Ce document est filmé au taux de réduction indiqué ci-dessous.

10X	14X	18X	22X	26X	30X
<input type="checkbox"/>	<input type="checkbox"/>	<input type="checkbox"/>	<input type="checkbox"/>	<input type="checkbox"/>	<input checked="" type="checkbox"/>
12X	16X	20X	24X	28X	32X

The copy filmed here has been reproduced thanks to the generosity of:

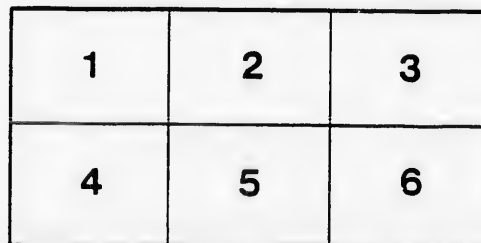
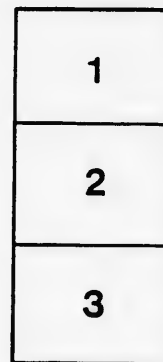
D. B. Weldon Library
University of Western Ontario
(Regional History Room)

The images appearing here are the best quality possible considering the condition and legibility of the original copy and in keeping with the filming contract specifications.

Original copies in printed paper covers are filmed beginning with the front cover and ending on the last page with a printed or illustrated impression, or the back cover when appropriate. All other original copies are filmed beginning on the first page with a printed or illustrated impression, and ending on the last page with a printed or illustrated impression.

The last recorded frame on each microfiche shall contain the symbol \rightarrow (meaning "CONTINUED"), or the symbol ∇ (meaning "END"), whichever applies.

Maps, plates, charts, etc., may be filmed at different reduction ratios. Those too large to be entirely included in one exposure are filmed beginning in the upper left hand corner, left to right and top to bottom, as many frames as required. The following diagrams illustrate the method:



L'exemplaire filmé fut reproduit grâce à la générosité de:

D. B. Weldon Library
University of Western Ontario
(Regional History Room)

Les images suivantes ont été reproduites avec le plus grand soin, compte tenu de la condition et de la netteté de l'exemplaire filmé, et en conformité avec les conditions du contrat de filmage.

Les exemplaires originaux dont la couverture en papier est imprimée sont filmés en commençant par le premier plat et en terminant soit par la dernière page qui comporte une empreinte d'impression ou d'illustration, soit par le second plat, selon le cas. Tous les autres exemplaires originaux sont filmés en commençant par la première page qui comporte une empreinte d'impression ou d'illustration et en terminant par la dernière page qui comporte une telle empreinte.

Un des symboles suivants apparaîtra sur la dernière image de chaque microfiche, selon le cas: le symbole \rightarrow signifie "A SUIVRE", le symbole ∇ signifie "FIN".

Les cartes, planches, tableaux, etc., peuvent être filmés à des taux de réduction différents. Lorsque le document est trop grand pour être reproduit en un seul cliché, il est filmé à partir de l'angle supérieur gauche, de gauche à droite, et de haut en bas, en prenant le nombre d'images nécessaire. Les diagrammes suivants illustrent la méthode.

GRAND OPERA HOUSE

PROGRAMME - LONDON, ONT.

C. J. WHITNEY,
LESSEE.
A. E. ROOTE,
MANAGER.

VIRGINIA

The best FIVE CENT Cigar obtainable in London. It is made of the finest selected stock, by the best workmen.

SOLE AGENT.....
H. McKenna, 225 DUNDAS STREET.

F. A. GOING...
Painter and Decorator
SIGN WRITING and SCENIC PAINTING
A SPECIALTY. 578 RICHMOND ST.

TO OUR CUSTOMERS ...
EXAMINE YOUR COLLARS AND CUFFS.
NOTICE the absence of former BRITTLIENESS which caused the work to break so readily. We have just put in, at a great expense, a wonderful machine, heated by steam - work only passing through the rollers once. The result: "Work is elastic, will not break and will last much longer than when ironed by the old method - heated by gas."
PARISIAN STEAM LAUNDRY CO.
OF ONTARIO (Limited).

IF it is in the NEWS it will be in the other London papers the next day. The NEWS is delivered to your home for 25 Cents per month.

FRIDAY EV'G, NOV. 19, 1897

UNDER AUSPICES OF THE 7th BAND

BROOKE
AND HIS FAMOUS
CHICAGO MARINE BAND

THE GREATEST POPULAR MUSIC BAND IN THE WORLD.

HOWARD FEW, Manager.

WHISKERS

Ten to one you wear a beard! And if you do, you know what a difficult matter it is to have it trimmed right. This is one thing the average barber knows nothing about. We have made a study of faces and know immediately how your beard should be trimmed to test suit your face.

T. TRACY, 397 RICHMOND STREET
CANADA'S LEADING BARBER.

FOR FINE Artistic ...
Photographs
GO TO
PALACE PHOTO STUDIO 201 DUNDAS ST. LONDON.
DUPLICATES may be had off Westlake's negatives at any time.
SHANNON & BROCKENSHIRE.

To the Bicyclists of London
WE CORDIALLY INVITE YOU TO COME AND INSPECT THE
COLUMBIA CHAINLESS WHEEL
Their New 1898 Model.
GURD & CO., 185 DUNDAS ST.

DRESS SUITS

Require more care in cleaning than you think. You are right in hesitating about giving it to the average repair shop. We make a specialty of Cleaning, Pressing and Repairing all kinds of clothing, and are the only first class house in the city doing this class of work.

M. H. BIRD, 388 RICHMOND ST. UPSTAIRS.

SMITH BROS.

STEAM, GAS and HOT WATER FITTERS

PLUMBERS

265 Dundas Street
... Telephone 538.

LONDON.

THE STELLAR ATTRACTION

MY FRIEND FROM CUBA
Is a clear Havana Filler Cigar, costing as much as the majority of 10c. goods, sold by
W. J. CLARK FOR 5c.

THIS PROGRAMME ...

IS FROM THE PRESS OF
HEAL & FLEMING

172 KING STREET
WE SOLICIT YOUR PATRONAGE TELEPHONE 874

MISERY OR HAPPINESS

IT ALL DEPENDS ON THE KIND OF CIGAR YOU SMOKE

RARE-BIT THE BEST 5c. CIGAR MADE

Office Restaurant

378 RICHMOND ST.

FRESH LAGER. BEST BRANDS OF ALL KINDS OF LIQUORS AND CIGARS. MEALS AT ALL HOURS. THE FINEST BRANDS OF OYSTERS.

D. SARE,
Proprietor.

The Ladies' Restaurant

220 DUNDAS ST.

A PLEASANT HOUR AFTER THE OPERA, AT

SHORT BROS.

.....

Extra Bill of Fare

OYSTERS
Cream Stew Celery Boiled
CLAM FRITTERS

The Latest Novelties in catering for Opera Parties, Balls, Weddings and Teas.

BOSTON FRUIT BUTTER CUPS, THIS WEEK 10c.

EXQUISITE CRYSTAL

Nothing makes a prettier ornament than the artistic creations we show in this line. The assortment is large and carefully selected. Owing to the popularity of these goods, we have been trying for some time to get a good selection and have only recently succeeded. Come in and see the collection when it is at its best. The prices are astonishingly low.

YEO'S CHINA HALL ... 177 DUNDAS ST.

STYLISH FURS

Our Stock of Ladies' Furs contains the Choicest Novelties in all kinds of Furs

WE LEAD ... IN LATEST STYLES AT LOWEST PRICES

Repairing and Special Patterns Furnished. Estimates on Remodelling.

.....SEE OUR LATEST.....

"FESTA," "MARQUISE" and "OLGA" COLLARS. "FRILL" and "MUFFS"

Milne, Spittal & Co. - 146 - DUNDAS ST.

THE FIRST



Everything you look for in a Meat Market is the class of Meat kept in stock. Being satisfied on this point, you begin to look around as to the cleanliness of the store. We would be pleased to have you call and put us to this test.

JOHN M. BREEN
735 RICHMOND ST. PHONE 944.
Poultry and Game in Season.

PROGRAMME

PART I

1. March Militaire, "Triumphal"... Brooke
2. Overture, "Semiramide"... Rossini
3. Two Gems from "Tannhauser", Wagner
(a) "Sublime Evening Star."
(b) "Pilgrims' Chorus."
4. Instrumental Solo..... Selected
(By some Soloist of the Band).
5. Mosaic from "Carmen"... Bizet

INTERMISSION FIVE MINUTES.



Beethoven's Music

Is so full of chromatic successions that it is absolutely unplayable on a common piano. Beethoven used every known trick that the piano of his day could accomplish. On the "BELL" Piano, Beethoven's music can be played as it should be—the fulness of the tone, the power to hold notes as long as the finger is held down, and the distinction of the base notes one from the other—all render this music practicable and enjoyable on "BELL" Pianos. We are only too glad to show this Piano to all callers.

Bell Piano Warerooms:
167 DUNDAS ST.

OUR DEMAND FOR YOUR TRADE

Is based solely and entirely upon our principle to give you the greatest possible value at the lowest possible cost—and that's why we get it.

English Breakfast Blend,	60c,	worth	80c
Club House	50c	"	65c
Five O'Clock Tea	40c	"	50c
Household	35c	"	45c
Special	25c	"	40c

You never get the best Coffee unless you get my pure Mocha and Java at 40c. per lb.

A. C. TAYLOR,
286 DUNDAS ST., LONDON, ONT.



W. T. STRONG & CO.

Dispensing
Chemists ...

184 DUNDAS ST., LONDON.

MARRIAGE LICENSES ISSUED.



IT NATURALLY FOLLOWS

That you have to pay more in the large stores. Large profits are required to pay high rents, etc. My place is small, rent low and profit meagre, but my work will compare favorably with the best. If you have your own cloth, bring it along, and I will make it up in the best possible style, and the cost will be reasonable.

FAIRBAIRN

OPPOSITE THE CITY HALL UP STAIRS TAILOR

RICHARDSON SELLS GOOD COAL

absolutely Guaranteed or Cash Refunded.---TRY THEM ONCE.

WE ARE SHOWING THE LATEST EFFECTS IN ...

SUITINGS AND OVERGOATINGS

Those contemplating the addition of a **DRESS SUIT** to their wardrobe will find it to their advantage to see us before purchasing elsewhere. Orders executed on the shortest possible notice.



O. LABELLE...
372 RICHMOND ST.

DO YOUR EYES FLOW?



Or do your eyes close when exposed to a bright light? Better let a refractionist, who is an expert, make an examination. He can tell you just what the trouble is, if there is a trouble. If you should wear glasses, the sooner you do so the better for your future health and peace of mind.

F. C. LA GRANGE, M. O.
212 DUNDAS STREET
Over Runnins & Butler.

YOUR AD.

In this space will cost you twenty cents per night. You are the judge of whether it would be well read. You have read this ad., others will read yours. Drop a postal to Box Office and solicitor will call on you.

F. H. BUTLER

Stock Broker

STOCKS, GRAINS AND PROVISIONS bought and sold for cash or on margin. Private wires to New York Stock Exchange and Chicago Board of Trade, Toronto and Montreal Stock Exchange quotations received by wire.

LONG DISTANCE TELEPHONE 1278.

15-16 Masonic Temple, London

PROGRAMME

PART II.

6. Suite, "King Henry VIII."... *German*
(a) Morris Dance.
(b) Shepherd's Dance
(c) Torch Dance.
7. Grand Aria for Mezzo-Soprano,
"There Was a Prince," from
"Il Guarany"..... *Gomis*
MISS SIBYL SAMMIS.
8. (a) "A Chinese Episode"..... *Bendix*
(b) "In Ole Virginny Two Step"..... *Brooke*
9. Intermezzo, "Will o' the Wisp". *Vochler*
10. Fantasia Hongroise..... *Tobani*

MR. T. P. BROOKE, - Conductor

THE GERHARD HEINTZMAN PIANO

USED IN THIS OPERA HOUSE WAS SUPPLIED BY
Warerooms: 229 DUNDAS ST., LONDON. W. McPHILLIPS.

BOOMER'S

BON-BONS AND CHOCOLATES

ARE UNEQUALLED FOR PURITY AND DELICIOUSNESS OF FLAVOR....

181 DUNDAS ST.

HAPPY THOUGHT

RANGES

WE ALSO CARRY A COMPLETE ASSORTMENT OF...

HEATERS AND FURNACES!



ARE ECONOMICAL DURABLE GAS-TIGHT SELF-CLEANING

PARKINSON & CO.

384 RICHMOND ST.

KLONDYKE

CANADIAN GOLD FIELDS

SYNDICATE.....10c.
FERN.....65c.
B. C. GOLD FIELDS.....10c.

ALL STOCKS SOLD IN RELIABLE COMPANIES ONLY

JOHN A. MOODY

Mining and Investment Broker
PHONE 1363. LONDON.

GRIGG * HOUSE

LONDON, ONT.

The Leading Commercial House of the West.

SPECIAL RATES TO THEATRICAL PEOPLE.

M. O'MEARA, PROPRIETOR.



OF COURSE the best place to buy

Coal

is at

CAMERON'S

YOUR DEALER HAS IT MAKE HIM GIVE IT TO YOU **RARE-BIT** THE BEST 5c. CIGAR

RICHARDSON SELLS GOOD COAL

Richardson Sells Only the BEST of DRY MAPLE WOOD

FRANK GOOPER

Artistic ...
Photographer

STILL TO THE FRONT
EVERYTHING UP-TO-DATE

AT THIS SPACIOUS STUDIO
... OVER ...

169-171-173 Dundas St.

COAL

We continue to ask for patronage on the old grounds—good service and good Coal. We screen our Coal, and deliver it promptly. A trial order will convince you—and then you'll stay with us.

W. HEAMAN

MAITLAND ST. Telephone 312

YOU LIKE TO EAT

At a restaurant where things look neat and clean, and the waiters polite and obliging, and where you are sure you are getting the best in the market, and that well cooked. That's the kind of place we keep. Call and be sure of it. Oysters served in any style. Open till 2 a.m.

CURRELL'S

LUNCH and OYSTER PARLOR

344 1/2 RICHMOND STREET

THE TEGUMSEH

LONDON, ONT.



FIRST-CLASS
IN ALL
APPOINTMENTS.

SPECIAL RATES ...
FOR COMPANIES

CHAS. W. DAVIS,
Proprietor.

NEXT ATTRACTION!

MATINEE AND NIGHT NOV. 20
SATURDAY

A. Q. SCAMMON'S COMPANY

IN THE BIG REALISTIC COMEDY PRODUCTION

“Side Tracked”

Illustrating the Funny Side of Life on the Rail.

THE FUNNIEST RAILROAD SCENE EVER
PRESENTED. . . .

THE BIGGEST LOCOMOTIVE. . . .
THE GREATEST COMEDY EFFECTS . . .

And a Company of Specialists, who will present sparkling music, bright specialties and mirth provoking situations, all of which create fun, fast and furious, from start to finish.

PRICES.

First Two Rows, Circle, 75c; Balance Lower Floor, 50c; First Two Rows, Balcony, 35c; Balance Balcony, 25c; Gallery, 15c. Matinee Prices, 15c, 25c.

CRAWFORD'S
BOXING ACADEMY

The Art of Self-Defence ...

Taught in all its branches, in an up-to-date manner.

SPECIAL RATES

To clubs of four or more.
Complete Gymnasium in connection.

JACK CRAWFORD,

Champion of Canada,

380 RICHMOND ST., Up-Stairs. Instructor.

Orders left at the Cloak Room for messenger boys or couples will receive prompt attention without charge.

The Management will esteem it a special confidential favor for a report of any inattention or want of courtesy on the part of the attaches and will not feel offended for any suggestions to make the Grand and its management and entertainments more attractive.

Yellow Snow

Would look odd, but not any more so than a shirt bosom. You want your laundry the proverbial snow white—that's the way we make it.

FOREST CITY
STEAM LAUNDRY 74 KING ST.

In purchasing tickets, please state Price, Location preferred, and the Entertainment.

The reserved seat tickets have a large number (not the date of the entertainment) on the left end lower corner and the ticket is good only for the entertainment for which it is sold. Please see that you have the proper ticket before leaving box office and correct change.

DO NOT HURRY.

There are always very many more people at an entertainment that are enjoying it, than there are that may be indifferent, therefore the few should not annoy the many, by putting on coats or making other preparations toward the conclusion of the performance. If you cannot remain quiet till the performance is over, kindly withdraw to the rear of the theatre, before the commencement of the last act. I have frequently timed the dismissal of an audience, and over 1500 persons have left the auditorium in 4 minutes. No need of being in a hurry. Street cars wait until all persons have left the building. Personally I don't care when people come in or go out, but I always feel like abiding by the wish of the majority, and they ask not to be disturbed.

Reserved seats at the Box Office from 9 a. m. to 5 p. m., daily, commence two days previous to day of entertainment. After the doors open for and during a performance, seats will not be sold for future performances except between 8.30 and 9.00 o'clock. Not more than ten seats sold to one person on opening of diagram.

Evening performance. — Doors open 7.30; Curtain raises 8.15 sharp. Matinee, doors open 2.00; Curtain raises 2.30 sharp.

