

# THE COMMERCIAL

FINANCE AND INSURANCE REPORT

Subscription, \$2.00 per Annum in Advance.

Established 1882.

Published Weekly.

VOL. 21

WINNIPEG, CANADA, APRIL 4, 1903

No. 30

## Eastlake Shingles

MANITOBA SIDING,  
ROCK FACE SIDING,  
PRESSED BRICK SIDING,  
BLK. DIAMOND ROOFING.

Full stock for prompt shipment at lowest market prices.

MERRICK, ANDERSON & CO.  
WINNIPEG.

## TETLEY'S TEA

Is Economy, Health and Pleasure, all in an Air-Tight Packet.

HUDSON'S BAY COMPANY  
Wholesale Distributors for Western Canada.

Wholesale Distributors for Western Canada.



TENTS, FLAGS AND  
ROLLER AWNINGS

THE EMERSON-HAGUE  
MANUFACTURING CO. Ltd.  
WINNIPEG.

## CODVILLE & CO.

Wholesale Grocers



—Packers of—

## Celebrated Gold Standard Teas

Coffee, Baking Powder and Sulces.

BANNATYNE AVE. E., WINNIPEG.  
Branches: BRANDON and CALGARY.

## BROMLEY & CO.



Tents  
Awnings and  
Mattress  
Factory.

Cor. Princess and Alexander St., Winnipeg

## J. McLEOD HOLIDAY

Wholesale Importer of

SMALL WARES, NOTIONS, TOYS,  
FANCY GOODS, CLOCKS,  
JEWELLERY & MEN'S FURNISHINGS.

DIRECT EXPORTER OF SENEGA  
ROOT.

173 McDermott Avenue. - Winnipeg.

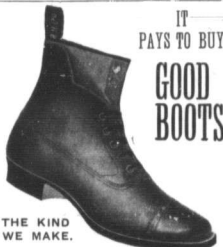
We shall be pleased to receive your orders for

## Spring Boots and Shoes

Larrigans, Gloves, etc.

Large Stock—Right Prices.  
Best Terms—Prompt Shipment.

THOMAS RYAN & CO  
LIMITED  
WINNIPEG, MAN.



THE KIND WE MAKE.

Mail orders shipped same day as received have the right of way through the house. Catalogues mailed on application.

THE AMES, HOLDEN CO. Ltd.  
Manufacturers of Boots and Shoes and Sole Agents for Granby Rubbers.  
WINNIPEG.

## Foley, Lock & Larson

Wholesale

GROCERIES, FRUIT AND PRODUCE

Successors to Specials in Fruit:



FANCY UNFROZEN  
CRANBERRIES,  
LEMONS,  
ORANGES,  
BANANAS.

## Easter Shirts

OUR NEGLIGE, three buttoned laundried bands are rare value, and are made of superior fabrics. Prices range from \$3.75 to \$12.50.

COLORED STIFF BOSOMS, constitute the finest lines in this class of goods that we have ever shown. All put up in 1/4 dozen boxes, to cost \$7.00 to \$11.00.

WE ALSO HAVE IN STOCK Black Satens, Oxfords, Flannel-ettes and other staple lines. All prices. Send us sample order and be convinced of the merits of the Crescent Brand Shirts manufactured by—

## THE GAULT BROS. Co., Limited

Importers and Manufacturers.

WINNIPEG

## New... Novelties

TO PICK FROM

LADIES' BELTS .....\$2.00 up.  
(In many makes and styles.)  
BELT BUCKLES ....\$1.50 up.  
(In new and fancy designs.)  
DRESS ORNAMENTS \$1.25 up.  
(The latest creations.)  
LADIES' FANCY TIES...\$2 up.  
LADIES' FANCY COLLARS ..... \$2.00 up.  
DRESS TRIMMINGS. All prices.

A Few Lines of  
MUSLIN MEDALLIONS  
10c doz. up.

In White, and White and Black. They're going quick!

We have doubled our facilities this season to make prompt deliveries.

We can handle your SORTING ORDERS, to your profit, and ship them quickly too. Try Us.

R. J. WHITLA & CO'Y  
LIMITED,

Wholesale Dry Goods.  
WINNIPEG.

## Bluestone

Send it out in our EXTRA STRONG FIBRE BAGS. They are just the thing for it. We have them in all sizes. Also NAIL BOXES.

Violet and...

Silver Grey

are the best low priced wrapping papers.

McALLISTER & WATTS  
43 Rorie Street - - WINNIPEG.

WINNIPEG  
Business College

Portage Ave. North End Branch opp. C.P.R. Depot.

COURSES—1, Business; 2, Shorthand and Typewriting; 3, Telegraphy; 4, Civil Service; 5, Primary English.  
Twelve experienced teachers employed. It pays to go to the BEST. We are not adventurers in this line of Educational Work. Full particulars on application.  
G. W. DONALD, Secretary.



## SUGAR CURED, SMOKED SQUARE CUT SHOULDERS

We have made a special study in the curing of SHOULDERS, and if you are not already selling our "GRIFFIN" Brand of SMOKED SHOULDERS, we will be pleased to have you try a sample case. They will pay you a good profit and give your customers the very best of satisfaction.

Your orders solicited, together with your requirements for our celebrated "GRIFFIN" Brand HAMS, BACON AND LARD.

**J. Y. GRIFFIN & CO.**  
WINNIPEG, MAN. LIMITED.

## MAPLE SYRUP

The season for Pure Eastern Townships Maple Syrup is now at hand. The first car to reach Winnipeg will be taken delivery of by us on Monday next, April 6th. Quote for as follows:

Bbls.,	1/2 Bbls.,	1/4 Bbls.	-	per lb.	\$ .09
5	Gallon Tins	-	-	per tin,	5.50
1	"	6	tins to case,	per case,	6.50
1/2	"	12	"	per case,	7.00
1/4	"	24	"	per case,	7.50

**R. A. ROGERS & COMPANY Ltd.**

WINNIPEG

## Window and Plate Glass

Over half a million feet in stock comprising almost all sizes. Shipments of car lots or smaller quantities made without delay.

**G. F. STEPHENS & CO.**

LIMITED.

170 to 176 Market Street.

## Spring Goods

Now Ready for Shipment

SPORTING GOODS

MUSICAL INSTRUMENTS

AND FANCY GOODS

Our Representatives are now Soliciting Your Patronage

**J. L. MEIKLE & CO.**

Wholesale Fancy Goods.

PORT ARTHUR - - ONTARIO.

WINNIPEG

ALWAYS AT THE TOP

Trade **A.G.R.** MADE IN CANADA

**SHIRTS  
COLLARS**  
and  
**CUFFS**

"Best Made."

MANUFACTURED BY

**THE WILLIAMS, GREENE  
& ROME COMPANY**

Limited.

BERLIN, ONTARIO.

**E. BOISSEAU & CO.**  
TORONTO.

Wholesale Tailors

Manufacturers of  
Men's, Youths', Boys' and Children's  
Clothing.

Western Representatives:

S. M. JAMES - - Winnipeg

**JOHN W. PECK & CO.**

Manufacturers of

**Clothing  
Shirts  
Furs**



Wholesale Dealers in.

**Hats and Caps**

At our Winnipeg Warehouse we carry in above lines, the Largest and Best Assorted Stock to be found in Western Canada. This is important to the numerous business men just starting in this territory. Our long experience of the Western trade enables us to know just what you want. Correspond with us

MONTREAL, WINNIPEG,  
VANCOUVER.

# THE COMMERCIAL

The recognized authority on all matters pertaining to trade and progress in Western Canada, including that part of Ontario west of Lake Superior, the Province of Manitoba and British Columbia and the Territories.

Twenty-First Year of Publication. ISSUED EVERY SATURDAY. Subscriptions—Canada and the United States, \$10 per annum in advance, or \$5 when not so paid; other countries \$15 in advance.

Changes for advertisements or stops should be in not later than Thursday morning.

Advertisements purporting to be news matter, or which profess to express the opinion of this journal, will not be inserted.

The Commercial certainly enjoys a very much larger circulation among the business community of the vast region lying between Lake Superior and the Pacific coast than any other paper in Canada, daily or weekly. The Commercial also reaches the leading wholesale, commission, manufacturing and financial houses of Eastern Canada.

Office 36 and 37 Merchants Bank Building. Telephone 254.

D. W. BUCHANAN,  
Publisher.

WINNIPEG, APRIL 4, 1903.

## THE POLITICAL SITUATION IN MANITOBA.

The political situation in Manitoba is becoming quite interesting. The provincial elections, which will probably take place within a few months,

dates, the general condition is usually unfavorable to the third party man. The Prohibitionists, however, apparently have no other choice but to make a straight fight to elect their own men to the legislature. They can not, of course, deal with the government party, in view of the incidence which is still fresh in the minds of all Manitobans. From the so-called Liberal opposition there is no hope for them. The newly-adopted platform of that party gives not a word of encouragement to the prohibition element. Their only hope is to be able to elect a sufficient number of their own men to the legislature to give them some voice in the affairs of the province. Three or four able and determined men could easily dictate to the House, in case of a close condition between the leading parties.

The Labor party is not likely to prove a factor of much importance in the situation. It is not likely that this party will nominate any candidates outside of Winnipeg. In the three city constituencies labor candidates have been nominated, but their chances of election in any case are considered very slim.

The Political Reform Union may, perhaps, be classed as the most recent movement in Manitoba politics, though the existence of the organization out-

erment would be a union of the Liberals, Prohibitionists and Unionists with the object of accomplishing this end. The Commercial, of course, has no knowledge of what may be going on within the inner circles of any of the various parties, but judging from the newly-announced Liberal platform and the utterances of the leader of that party, the Liberals have no intention of coquetting with the Prohibitionists at least. On the other hand, their platform may be taken as a straight hint to the Prohibitionists that they will have to fight for all they can get. The leaders of the Political Reform Union, again, judging from their public utterances, are quite hostile to the Liberals, or at least to some of the leaders of the Liberals. A union to oust the government, without which the government is apparently quite safe, seems therefore among the improbabilities at the moment.

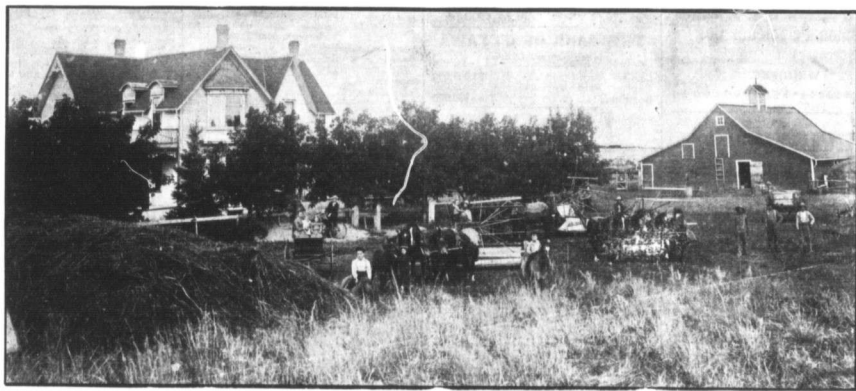
## KOOTENAY LEAD INDUSTRY.

R. Robertson, of Nelson, and H. Bentley, of Lechler, are visiting principal points in the Territories in the interest of the lead industry of the Kootenay district of British Columbia. Those interested in the Kootenay lead industry have been endeavoring for some time to secure tariff

conditions which have existed of late.

In the Kootenay district of British Columbia there is a large area of silver-lead bearing territory. Considerable capital has been invested in the development of these mines. Prior to January, 1900, the ores produced from these mines were sold in the United States at a profit, notwithstanding the high duty imposed by the United States on lead in ores. In January, 1900, the United States Smelting and Refining Trust refused to make further purchases of British Columbia ores. This at once practically paralyzed the lead mining industry. This has led to the closing of most of the silver-lead mines, the percentage of silver in many of the ores being too small to permit of the working of the mines unless a profitable market can be found for the lead. The decline of the industry is shown by the statement of the Kaslo board of trade, which says that the production of lead has declined from 31,000 tons to less than 12,000 for last year.

A statement published by the Nelson board of trade says that over \$20,000,000 has been invested in these lead mines, and about \$750,000 in smelting plants. Besides this, there has been an investment of many millions of dollars in other ways, as a result of the development of the lead



MANITOBA FARM HOMES—MATTHEW SUTTON, ROLAND.

will make one of the most remarkable contests which has ever taken place in Canada. This situation is due to the great variety of interests which enter into the contest. If all the parties in the field succeed in electing any number of members to the House, the next Manitoba legislature will be a very complex body. Besides the two old parties of Liberals and Conservatives, we have in this contest a Prohibition party, a Labor party and the Political Reform Union. The Prohibition party is perhaps the strongest of the three new elements, and has shown great activity so far in preparing for the campaign. In fact the Prohibitionists have shown almost greater energy than either of the old political parties in nominating candidates and carrying on other preliminary work. What the result of their efforts will be when it comes to the vote, is, of course, difficult to say. In the case of a three-cornered contest, where a Prohibitionist candidate comes in between two straight party candi-

dates the present form of the Prohibition movement. Generally speaking, the Political Reform Union may be said to be composed of the more radical of the Liberals, joined with whom are persons who for various reasons have seen fit to withdraw allegiance from the old political parties. The Unionists have several candidates in the field, either nominated or prospective, and they may be able to put up quite a fight in a few constituencies.

The general effect of the advent of these new elements in the provincial elections will doubtless be to weaken the Liberal opposition and strengthen the governing party. This is evidently fully realized by the opposition, judging from the attack made upon the Prohibitionists by the leader of that party. The injection of a few Political Reform Union candidates into the contest would, however, prove even more disastrous to the Liberals than the advent of the Prohibitionists. In this badly mixed provincial political situation, the only hope of ousting the gov-

ernment. The object in visiting the Territorial towns is to secure an endorsement of the proposals for protection to the lead industry from the business men of these towns. A number of points have been visited, and in every case the boards of trade have adopted the proposals. In this connection it will be remembered that the Winnipeg board of trade recently endorsed the proposals of protection for the lead industry. The Winnipeg board did not pronounce directly upon the principle of protection. The ground taken was, that a protective policy is now in force in Canada, and while that policy remains, western interests as well as eastern manufacturing industries should receive whatever benefit may be derived from that policy. Speaking generally, the tariff is mainly in the interest of the eastern manufacturers. The West has few industries to protect. The lead industry is one of the few, and it has been slowly dying for some time, owing to the unfavorable commercial

industry. All this capital is threatened with absolute extinction as a result of the decadence of the lead industry. The population of the district has declined from 20,000 to about 10,000. The expenditure for wages in connection with the lead mines was estimated at \$2,750,000 annually before the decline in the industry set in.

The proposals now made for the revival of the industry are based on tariff protection. At present there is no duty on lead ore coming into Canada. On lead pig, scrap, etc., there is a duty of 15 per cent, and on dry white and red lead, 5 per cent. The British preferential tariff reduces the duty to 10 per cent, on pig and 3 1/2 per cent, on dry leads. The following scale of duties is asked on lead and its products: Lead ore, 1 1/2 cents per lb.; pig lead, etc., 2 1/2 cents per lb.; corroded lead, 2 1/2 cents per lb.; white zinc, 2 1/2 cents per pound. At present it will be noticed that the duty is lower on the corroded lead than on pig

(Continued on page 700.)



lead, which is a peculiar condition, depending as it does directly again working in Canada.

The duties asked for are the same as those imposed on similar products by the United States. It is claimed that the price of ground leads would be about fifty per cent. more advanced by the adoption of these duties. The British preferential tariff would, of course, operate to reduce the proposed tariff to a considerably lower basis than the United States tariff on lead and products thereof. The British Columbia lead ores now shipped to the United States to be smelted and refined, then to England or Germany to be corroded, and may possibly come back to Canada again in the form of manufactured state. The claim made by those interested in lead mining is that all this work would be done at home if the necessary protection were given, without costing the Canadian anything. Any money now being paid owing to the saving in transportation charges. The production of lead in British Columbia, it may be noted, is more than sufficient to supply the entire consumption of Canada, so that all about the material for refining is being imported is assured. At present the refining and corroding is done in Canada.

Manitoba and the Territories are, of course, greatly interested in the development and prosperity of the mining industry in British Columbia, and the development of those regions means a good market for the products of our farms.

#### Irish Land Bill.

The new Irish land bill, from the section by which the bill itself may be summarized as follows: A new department of the Irish land commission is called the "Estate Commissioners," who are under the control of the Lord Lieutenant for Ireland. They will decide what constitutes a farm, and they may refuse their sanction to the sale of poor and non-economic holdings unless adequately secured. They may also make separate bargains for the purchase of small holdings may continue under the same terms as the estate are sold, the agreements are to be sanctioned by the commissioners under a new act. The commissioners may also be made to others who within the past three years have been tenants in Ireland. The commissioners may will be incurred in issuing the stock on account of discount extra stock will be issued to the grant made under the English Land Act. If the surplus is issued as a premium the surplus will be used to reimburse the new grant. The annual payment by the tenants will be 1/4th as a term of the annuity and 1/2 as a perpetual annuity. The price paid to the tenant will be 1/2 of the capital value of the annuity at 2 1/2 per cent. and the rent charged at 2 1/2 per cent. in order to facilitate the transfer of the

land grant in aid will be made of the £1,000,000 to be employed as follows:—A percentage to be levied on the amount of the purchase price to be paid to the vendor, the maximum for the first £2,500 and under will be 15 per cent., the minimum for estates of £4,000 and over will be 10 per cent. It is provided that no registration fees shall be charged and no stamps charged on conveyances. The vendor or sub-let or sub-divides the land shall be bankrupt, dies or leaves his estate, the commission may order the land to be sold. The legal business connected with the purchase and conveyance of the land commission and a cheaper process will be introduced for fixing the rents, appearing before a commissioner. The bill, which is in several sections and many sub-sections and headings, will, it is understood, be circulated on Friday or Saturday.

#### Side Tracks for Elevators.

The following important letter from J. J. Macpherson, general superintendent of the C. E. R. is being reprinted as posted on the bulletin board of the union this week:

"The complete track on which elevator cars will be located between the following points:—Winnipeg, Brandon, Neapolis and Rosser, Rosser and Berthier, Berthier and St. Paul, Alexander and Griswood, Hargrave and Eikhorn, Fleming and Grosvenor, Hedon and Waples, Waples and Grosvenor, Grosvenor and Mistatim, Mistatim and Indian Head, Indian Head and Appelle, Appelle and Delisle, Regina and Grand Coulees, Belle Plaine and Pasqua, and also a siding at Little Beauséjour."

The above is a most important announcement, as it will supply a much needed increase of track facilities along the main line of the C. E. R. west of Winnipeg. Not only will it give elevator facilities at eighteen different points, but it will also provide sidetrack running facilities for a larger number of trains. There need be no delay in the construction of these sidetracks, for at almost every four or five miles there will be a sidetrack cut or line. As yet, freight, passenger and stock cars are being run on the main line, and considerable trouble in running so many freight, passenger and stock cars on the main line, and the need of sidetrack facilities. At every point where there is a siding it will mean, as a rule, a siding for the elevator superintendent's department, discussing the project, stated that the work would be started at an early date in the spring as could be done. The company has had a large number of requests for elevator sites from local firms and also from American firms, and it is to provide adequate facilities for these sidetrack areas to be built.

#### The Cattle Embargo.

The correspondence between the Canadian government and the British government in regard to the embargo against Canadian cattle, was presented to parliament in the House of Commons on the 11th inst. It is very little that is new contained in the letter, and the correspondence between both governments on this matter. Wm. Mulock, when attending the colonial conference, took the subject up with Mr. Hanbury at the time of the discussion between Mr. Mulock and Mr. Hanbury. Mr. Hanbury stated that the British government was satisfied that Canadian cattle were not diseased, and that the British act of 1886 was not occasioned by a suspicion of disease. But on the other hand, the contrary, was general feeling, and applicable to all countries. He maintained that the British act should decide at the early stages whether the cattle were or were not diseased. The British government, however, is in the interests of the British farmers to take any chance by entertaining any possibility of disease. He stated the provisions of the act of 1886. Sir Wm. Mulock then pressed for an extension of the act for ten days to thirty days in which cattle might be slaughtered at the port of entry. At the time of the discussion, Mr. Hanbury did not place any difficulties in the way of this extension, but later he wrote Sir Wm. Mulock, Ottawa, stating that he could not do so. He stated that he held that it was not necessary to the trade. Mr. Hanbury gave the letter

to Sir William, assuring him that the British government regarded Canada as being free from disease in its herds and flocks. On December 13, 1902, Sir William wrote Mr. Hanbury, pointing out that at a time when efforts were being made for the development of reciprocity between the two countries, the refusal to remove the embargo was certainly not helpful, so far as Canadian sentiment was concerned, in advancing the relations between Canada and the motherland. He stated that it makes it pretty plain that there is very little chance of the embargo being removed.

#### Chinese Immigration.

Ottawa, March 27.—A discussion on Chinese and Japanese immigration took place in the House this afternoon. It arose on Sir Wilfrid's resolution to increase the poll tax on Chinese from \$100 to \$500. This was done to satisfy the demands of British Canadians. In the House, Sir Wilfrid said that Japan had set forth that by prohibiting the immigration of Japanese into Canada, Sir Wilfrid in introducing the resolution to raise the poll tax on Chinese from \$100 to \$500 was being unfair. He was aware of the strong feeling against Asiatic immigration in British Columbia, a feeling which he thought never there had been a large influx of Mongolians or Japs, although not understood in the past. This antagonism, which began to be manifested forty-five or thirty years ago, was based on ethnological and racial broad differences between the races. Assimilation was not to be either possible nor desirable, and the difference in character being too numerous to mention. In 1888 the Macdonald government imposed a tax of \$50 which was supposed to be sufficient to greatly increase the cost of immigration. For some years it had done so but of late years the immigration had increased very rapidly and an agitation arose for an increase in the capitation tax. In 1900 the sum was doubled, but at the time British Columbia members on both sides represented to the government that it would be better to have an investigation by a Royal commission, the result of which had become definite that an endeavor should be made to have Chinese immigration to Canada prohibited by treaty, and that in the meantime the head tax should be increased so as to restrict it within very narrow limits. With regard to the Japanese there was the same prejudice existing as against the Chinese. Sir Wilfrid was sorry to say, Japan was one of the rising countries, had now taken the most progressive and would probably in a short time be in the forefront of the civilized nations, but in British Columbia the Japanese did not look upon as a desirable immigrant. The problem had been solved for Canada by a deed of kindness on the part of Japan in passing an act forbidding laborers to emigrate from Japan to Canada, so that it is not necessary at this time to have any legislation in Canada prohibiting that race.

#### Grand Trunk Pacific Bill.

Ottawa, March 26.—The petition of the Grand Trunk Pacific railway for incorporation was presented to the House by Leighton McCarthy. The capital stock is placed at \$7,000,000. The application defines the route from the point near Quebec to either North Bay or Greenbush; thence westerly to north of St. Regis to a point near Winnipeg; thence northwesterly via Batcheval, Edmonton, Dunvegan, thence by either the Peace or the Pine river to the Peace River, or by an Inlet or such other port on the Pacific as may be considered more accessible for the purposes of the company, and also branch lines from a point on the main line to Port Arthur, Brandon, Regina, Calgary and Edmonton, and another point in the province districts or territories through which the main line may be run, and also branch lines from some point in British Columbia to Dawson City, Yukon.

#### British Preference Policy.

London, Eng., March 26.—The Morning Post and Times have published dispatches from Berlin correspondents to the effect that Germany has been disastrously surprised by news that the customs convention signed at Bloemfontain provides for preferen-

tial treatment of British goods imported into South African colonies. The British government had created the impression: "For two or three years the German press exulted in the belief that the exemption of British goods from import duties might by retaliatory measures applied by the German government would reverse her policy. The German newspapers adopt the line, that the South African government would reverse her policy of adopting Great Britain advantages for which they can receive no compensation, and that the principles of the mother country, and that their conversion will be aided by the retaliatory policy to be inaugurated by Germany. The preferential policy is attributed to Chamberlain, and as being one of the most significant results of his visit."

#### Important Business Change.

A change has taken place in the Boyce Cattle Co., Winnipeg. The interest of H. Hilton in this business has been purchased by W. D. Mace, who later in the week will be in possession of the business. Mr. Mace has now located in the city, and will take the office management of the Boyce Cattle Works, which will be continuing to operate as before. Mr. E. Boyce will superintend the practical work of the factory, formerly in charge of the business. He will give the business plenty of capital to carry on the factory to the best advantage. This is the largest establishment of the kind in Western Canada, and the business has now assumed quite a large proportion. The greatest difficulty lately has been to secure men and materials fast enough to keep up with the increased business. Mr. Mace is a partner in the business, has visited Manitoba several times previous to this year, and has held considerable real estate investments here for some years.

#### New Maple Syrup.

New maple syrup is beginning to arrive in this market. The Macpherson trial was held in the city, and a bill for a consignment, which will be here in a few days. The indications are that the supply of maple syrup is scarcer than ever this year, and the public may therefore look forward to a greater price for the product. As a matter of fact, pure maple syrup and sugar is becoming a scarce article. It is not hard to discover a few of the better shippers are prepared to guarantee pure goods. The reason for this is that it is hard to discover the demand has expanded very largely of late years, and has long since exceeded the supply. This is a diminishing one, owing to the fact that farmers have been finding it profitable to sell their sugar bushes to the lumberman. Only recently a case was mentioned of one eastern farmer who got \$20,000 for his sugar bush as it stood, the purchaser being a lumberman; and such cases are not uncommon. From these facts it will be seen that there must be a great temptation for unscrupulous dealers to enlarge their stock of maple syrup by adulteration in order that the demand for low priced goods may be supplied. When the market is willing to pay the price a limited quantity of the pure stuff may still be obtained from reputable shipping houses.

#### Wonderland.

The 1903 edition of "Wonderland" is now in circulation. The publication was issued by the Northern Pacific Railway Company and is descriptive of the country contiguous to that railway. As the title implies, it contains special subjects treated in this number are: "The Travels of Father Hennepin, the Franciscan, Priest, in the Northwest in the 17th century; The Mandan Indians of the Upper Missouri River; The Indians of the Northwest and The Yellowstone National Park." "Wonderland" is published annually and is one of the most fully printed and illustrated publications we see. It is well worth the investment of a few cents. It is all that the company asks in return for a copy. Persons desiring it should write to the Northern Pacific passenger agent, St. Paul, Minn.

New maple products are expected in the Winnipeg market within a few days.

## Winter Wearables that are Winners

STYLISH STOCK DAINTY DESIGNS.

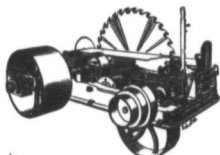
Our Travellers are now out with the finest lines of Fall and Winter Samples the West has ever seen. See them. The kind any gentleman can wear. OVERCOATS, SUITS, TROUSERS, Men's, Youths', Boys', Child's.

### DONALD FRASER & CO.

Manufacturers of Fine Clothing

WHOLESALE

WINNIPEG—126 Princess Street.  
MONTREAL—502 St. Paul Street.



### Saw Mill Machinery

Engines and Boilers  
Steam Pumps and Heaters  
Gasoline Engines  
Elevator Machinery  
Shingle Mills, Lath Mills, Planers, Moulders and Moulders.  
MACHINERY OF ALL KINDS.

### Waterous Engine Works Co. Ltd.

WINNIPEG Man.



# "HOWE"

GASOLINE ENGINES

are made by the same people who make the celebrated "HOWE" Scales.

They use less Gasoline, Run Cooler, Start Easier, Wear Longer, and give less Trouble than any Engine on the Market.

### Stuart Machinery Co., Limited

Sole Canadian Agents. WINNIPEG, MAN.

## Grain Elevators and Supplies

SPROCKET CHAIN BUCKETS, PULLEYS, ETC.

Equipment of any kind at Very Lowest Figures.  
Prompt Delivery. Good Goods.

### The Manitoba Iron Works, Limited

WINNIPEG

### LENTEN SEASON FISH

We offer the following to the trade at close prices: Labrador herring, in half barrels; boneless cod, 1 and 2lb. bricks, 25 lb. boxes; dry cod, in 100lb. cases; Frogan haddock, in 15 and 20lb. boxes; fancy Yarmouth blasters, 100 and 200; fancy Ripper harrings, 100; St. John blasters, 100. Orders received daily by express. Send in your orders.

### United Fruit & Produce Co. LIMITED.

246 Main Street. Winnipeg.

#### PLEASE NOTIFY.

Subscribers to The Commercial are requested to notify the office of any irregularity in the receipt of their paper.

### Hodgson, Sumner & Co.

DRY GOODS

SMALLWARES

FANCY GOODS

345, 347 and 349 St. Paul Street.  
MONTREAL.

Represented by A. F. Houston, Leland Hotel, Winnipeg.



WAREHOUSES:

TORONTO AND MONTREAL

OFFICES: WINNIPEG, VANCOUVER, QUEBEC, HALIFAX

A COMPLETE RANGE OF

## FREIZE SKIRTS

Made up, also Skirtings of Freize at special prices in stock and for Fall Delivery kept by Montreal House.

REPRESENTATIVES, MANITOBA, NORTHWEST TERRITORIES AND BRITISH COLUMBIA:

T. H. WARDELL, W. T. WALTERS  
C. S. WEBBER, M. A. DAWSON  
SANFORD BLOCK, WINNIPEG

G. F. WILLIAMS  
VANCOUVER

### JOHN W. LORD Insurance Broker

Special facilities for placing surplus lines of insurance.

Automatic sprinkler equipments a specialty.

212 McIntyre Block - WINNIPEG.



### J. CLEARHUE Commission Merchant

Fruits and . . .  
All Kinds of Produce

Special attention given to consignments of BUTTER and EGGS.

Consignments received in all lines. Correspondence solicited.

VICTORIA, B. C.

P. O. Box 536.

### ERNEST S. HARRISON CO. Ltd.

Electrical Engineers

SUPPLIES AND CONSTRUCTION.

Repairs of All Kinds.  
PORTAGE AVE. - WINNIPEG.

### THE B. & C. Front LONG HIP CORSETS

No Brass Eyelets



Just a Loop Lacer

Wholesale Dry Goods Dealers. Can supply you, or write to—

### BRUSH & CO., TORONTO

THE BEST

## Butter Tubs

On the Market. Finest White Spruce

Order Early to Insure Prompt Shipment.

UNION MADE BROOMS, Brushes, Baskets, Woodenware and Store Fixtures.

### WALTER WOODS & CO.

Hamilton and Winnipeg.

Evoluti  
Donald  
Co. whole  
Winnipeg  
to this cl  
at the Me  
reports q  
wholesale  
class of g  
as regard  
able. Thi  
ing on fo  
calculated  
of (othin  
ket are t  
sals, and  
popularis  
clothing.  
petition H  
lines. No  
ity is the  
ing cloth  
course ch  
a certain  
important  
class of g  
cheap goo  
made, suc  
A busines  
nest in h  
of looking  
however,  
in the clo  
ity and w  
ing at ve  
naturally  
to the clo  
cones kn  
to expand  
In this  
clothing,  
single of  
years ago  
have thou  
house for  
invariable  
tailor and  
are. In t  
ferent, for  
done for  
best claim  
ing trade  
into the  
fairly well  
a suit of  
fine mate  
and which  
as well a  
The new  
the leading  
fall trade  
quite good  
for anyon

**DRY GOODS TRADE.**

**Evolution of the Clothing Trade.**

Donald Fraser, of Donald Fraser & Co., wholesale clothing manufacturer, Winnipeg and Montreal, has returned to this city from spending some time at the Montreal factory. Mr. Fraser reports a change going on in the wholesale clothing trade. A much finer class of goods is now being made, both in the material and workmanship. This improvement has been going on for some years, but has been accelerated of late years. The new lines of clothing now being put on the market are the best yet shown in Canada, and will undoubtedly tend to popularize the demand for ready-made clothing. A few years ago the competition in clothing was toward cheap lines. Now it is quite different. Quality is the goal toward which the leading clothing houses are aiming. Of course cheap goods are in demand for certain classes of trade, but the more important demand is for the better class of goods. Formerly it was only cheap goods that could be sold readily, such as clothes for rough work. A business man, or any one who was neat in his dress, would never think of looking for ready-mades. Now, however, it is possible to secure goods in the clothing houses equal in quality and workmanship to ordered clothing at very much lower prices. This naturally brings a better class of trade to the clothing, and as this fact becomes known, the trade will continue to grow.

In this matter of fine ready-made clothing, Canada is following the example of the United States. A few years ago, in Canada, no one would have thought of going to a clothing store for fine clothing. The invariable custom was to go to the tailor and order a suit made to measure. In the United States it was different, for there a large trade has been done for years in fine goods, with the best class of consumers. The clothing trade in Canada is now working into the better class of trade. Any fairly well proportioned man can get a suit of ready-to-wear clothing, of the material and good workmanship, and which will fit and look just about as well as the tailor-made garments. The new samples now being shown by leading clothing houses for the fall trade include garments which are quite good enough and stylish enough for anyone to wear.

**Grocery Trade Notes.**

Reports from Greece note a steady one in currents at previous values for prompt shipment.

Shelled walnuts are very firmly held, in sympathy with stronger advice from Europe.

Constant rains during the past few weeks have prevented Louisiana sugar planters from carrying on field work, and the outlook for the next crop is unsatisfactory.

A cut of 1/2 to 1 1/2c per pound on starch was announced by one manufacturer firm in Ontario last week and the trade expects the other manufacturers to follow the example.

The tone of the market for Barbadoes molasses is becoming very strong as private cable advices received to date further advances of 1c per gallon, which makes the first cost price now 16c per gallon. A cable was received from Barbadoes yesterday making a firm offer of 400 puncheons at 23c cost and freight, but it is reported that buyers showed no disposition to operate at this figure.—Montreal Gazette.

Regarding the sale of next year's tea for Canada and beyond, Messrs. Gov. Wilson & Stanton, London, say: Very little increase has taken place in the prices of the standard teas. There will probably be from 10 to 20 million pounds of green tea manufactured during the coming season, and as this is supplied mainly by estates at low elevations, the output of common tea will be correspondingly reduced. The labor difficulty in India may also tend to reduce the output. Remembering the facts, and the steadily increased consumption at home and abroad, it seems doubtful whether we shall be able to get the next season's tea unless planters make the fatal mistake of going in for coarse plucking, a system which had such disastrous results some years ago.

Relative to the growing Brazil coffee, the prominent New York firm says that there is nothing in sight in the shape of a menace to production of coffee in Brazil, and the resources

of the country certainly do not warrant any idea that the Brazilian government can recoup the planters for either destruction of coffee, or checking of the growth, seeing that Brazil revenues depend so much on the export of coffee. The true remedy to correct over-production must come from the price itself. Europe and the United States have relieved Brazil, to the extent of the enormous stocks now carried in consuming markets at remunerative prices to the planters, and Brazil can best afford to sell at lower prices to test the question whether it may be possible to curtail the production will come more surely and thoroughly from natural causes than any other.

**Hardware Trade Notes.**

A report from Toronto, on Monday, said since Friday the price of cement has advanced from six cents to ten cents per barrel and is now selling at \$2.26, compared with \$1.80 a year ago. Cement men state that this price will be further increased by 20 per cent. during the next fortnight.

**Implement Trade Notes.**

The Houton Implement Co., of Grand Forks, N. D., have opened an agency in Winnipeg for the sale of gasolene engines, automobiles, etc.

The American Seeding Machine Company will extend their agency to Canada. Offers from a number of places in Ontario of sites are now being considered.

Parsons, Rich & Co., manufacturers of feeders, have decided to open up a direct agency in Winnipeg, and have appointed D. Kimble to take charge of their Western Canadian business.

W. Johnston & Co., Winnipeg, are advertising a line of rollers and scrapers which it would be well for the retail trade in the west to consider when placing orders for the same. The line is a good one, and will give satisfaction to anyone.

**British Columbia Lumber News.**

The week has been pregnant with lumber news. The provincial government has thrown a bolt into the camp of independent loggers by announcing that henceforth all those taking out special licenses for timber lands in the province must secure a mill of their own on the lands surveyed. Under former conditions any logger who could raise \$100,000 could secure a mill of long before the year was up at a profit. Now the extra expense of surveying taken out in many instances. The government will consequently lose a large revenue for the time being. The mill men however, seem well satisfied with the new clause in the act. They claim that the government has been much bothered by overlapping claims and this surveying will do away with this overlapping. They say also that what revenue is lost now will eventually come to the government. All admit, however, including the mill men, that it will be a hardship on loggers or millmen to purchase a mill of their own on their claims and will have to have them surveyed before renewal or give them up.

J. Hanbury of Brandon, Man., representing Minneapolis and St. Paul lumber companies, has secured a tract of 600,000 of leasehold timber on Jarvis Inlet, a short distance from Vancouver. He proposes to purchase 100,000 acres of leasehold within the next month.

The British Columbia mill and lumber manufacturers have resented alleged statements of Mr. McNeill, secretary of the loggers' association, to the effect that the C. P. R. were giving coast mill special rates to Manitoba and Saskatchewan, and that he was assisting them. Also that special freight rates were given to Interior B. C. lumbermen in the Northwest. They deny these statements in toto and state that the cause of the special rates is that the C. P. R. is equal to the demand in the Canadian territories is because the C. P. R. has no other lines in the Northwest, and is only fair to say that Mr. McNeill denies having made the statements.

A syndicate of loggers has formed a syndicate to secure a tract of hardwood timber in Australia covering 100,000 acres for the purpose of manufacturing a hardwood lumber and shipping it to America. J. W. Smith, of Montreal, is at the head of the enterprise.

Houses in the "knock-down" for the Northwest is the latest improvement

**H. LAMONTAGNE & COY LIMITED**

Established 1869.

Wholesale Manufacturers and Exporters of

Fine Harnets, Collars, Saddles, Horse Blankets, Trunks, Valises, Satchels, Travelling Bags, Moccasins, Fitted Uppers, Etc.



MARQUE DE COMMERCE.

Importers of and Wholesale Dealers in

Leather and Saddlery Hardware.

Balmoral Block,  
1902 Notre Dame Street,  
MONTREAL.



**Contractors' and Municipal Road Scrapers**

All sizes of Drag and Wheel Scrapers and Grading Plows at lowest bottom prices. If interested send for catalogue and prices to

**W. JOHNSTON & CO.** 776 Main Street WINNIPEG

**NOTE**  
**CLOSE**  
**FRESH**  
**AT**  
**BOTTOM**

**Page Acme Poultry Netting**

A bird cannot fly through as small a hole as it can crawl through, as Page Poultry Netting is made with small meshes of bottom and large at top. No 12 galvanized wire top and bottom—no sag. Get Page fences and gates—they're best.

The Page Wire Fence Co., Limited, Walkerville, Ont.  
Montreal, P. Q., and St. John, N. B.

**ROSS & ROSS, General Agents, WINNIPEG, MAN.**

in the local lumber trade. The Hastings mills have now on hand an order for forty of these houses and preparations are being made to go into it extensively. The plan of building in sections a small settlers house, marking the sections and sending the house in pieces to a mushroom town was long ago adopted in many of the western states but is a new one for British Columbia. The houses are intended for the Northwest Territories. In the order for forty houses there are no less than eight different designs.

All attempts of the loggers and mill men to decide to jointly act for certain amendments to the act governing the sale of timber have failed. The mill men met this week and decided not to consent to the draft agreement proposed by the loggers. As previously published the loggers desired to have the special licenses made transferable, and to have their life made 15 years instead of one year. The mill men refused on the ground that it would tie up all the timber in British Columbia to introduce such legislation, as speculators would come from the outside and timber would be bartered like horse flesh, and if necessary, held for 15 years. The clause in the Gazette, which has caused

so much consternation among the loggers, reads as follows:

The act in force is hereby given, pursuant to the provisions of section 55 of the land act, that no special licenses to cut timber on crown lands will be granted or renewed until after the applicants have had the limits surveyed by a duly qualified provincial land surveyor to the satisfaction of the lands and works department, signed, at V. C. Wells, commissioner of lands and works, Victoria, B. C., 26th of March, 1902.

The Dominion department of the interior will offer a number of blocks of school lands in the Northwest Territories for sale in May and June next. The minimum price will be \$7.

More than 500,000 immigrants arrived at New York during the year 1902, which was an increase of 138,000 over the previous year. Deportations of immigrants who did not come up to the requirements of the immigration laws exceed those of previous years by several thousand. During the past year 5,516 immigrants were sent back to their homes at the expense of the steamship companies, as compared with 3,046 in 1901.

# RETAIL MERCHANTS

**A Contented Customer**

**Good Advertisement**

Have you in stock a supply of

## EDWARDSBURG BRANDS SYRUP

Bble., Hf. Bble., 20, 10, 5 and 2 Lb. Tins.

**CHOICEST QUALITY PRICES LOW**

## REINDEER BRAND

**Condensed Milk  
Evaporated Cream**

The standard brand of the DOMINION For sale by all Winnipeg Wholesale Grocers

**E. NICHOLSON**

**WHOLESALE AGENT  
WINNIPEG, MANITOBA**

**THE W. E. SANFORD  
MFG CO., LTD.**  
HAMILTON, ONT.

Wholesale

**Clothing Manufacturers**

Offices and sample rooms in the Sanford block, Winnipeg, corner of Princess and Bannatyne streets, where a complete set of samples can always be seen.

Western representative—W. Dunlop, Geo. Shaw, A. McAllister.

**The First Fresh  
Spring Salmon**

of the season is now arriving. Very choice.

Orders by wire or letter promptly filled.

**W. J. GUEST** Wholesale Fish, Game, Poultry, Etc.  
600 Main St., Winnipeg.

**Easy to Buy  
Easy to Work**

Farm Implements that bear our name are the standard of excellence. We make them in such a way that satisfaction is assured. Let us mail you a copy of our Catalogue. It tells about the new features and fully explains all particulars.

**THE FROST & WOOD CO.**  
WINNIPEG, MAN.



**150,000**

Healthy, well-rooted Manitoba grown young trees, plants, seedlings, roots, vines and cuttings of fast-growing Russian poplars and willows, maple, elm, flowering shrubs, Virginia creepers, thorn-bark roots, small fruits of all kinds and a few apples and crab. Prices away-down. Send for price list.

**CALDWELL & CO.**

Virden Nurseries. VIRDEN, MANITOBA.

**JAS. MCCREADY & CO.**  
LIMITED.

WHOLESALE . .

**Boot and Shoe  
Manufacturers**

MONTRÉAL, QUE.  
W. WILLIAMS, Agent.

## Wholesale

We supply all out of town merchants with a full line of

## Jewelry

at wholesale prices. Write for particulars.

**D. R. DINGWALL Ltd.**

424 and 584 Main St., Winnipeg.  
Sign of the Street Clock.

## Lalonde, Milford & Co.

WINNIPEG, MAN.

Manufacturers of

**SASH, DOORS,  
SNOW GASES,  
STORE AND BAR  
FITTINGS, Etc.**

Offices and Mills corner of King and Sutherland.

Highest Grade British Make

"THE PREMIER" Waterproofs are guaranteed not to harden and to be thoroughly WATERPROOF

**"PREMIER" WATERPROOF GARMENTS**  
ESTABLISHED 1873.  
SHOWROOMS: 216 PORTAGE AVE. WINNIPEG

Standard of the World

HEADQUARTERS FOR

## FORMALIN OR FORMALDEHYDE

The Modern Method of Treating Grain for Smut.

We have a large stock of this article in Carboys containing 110 lbs., and demijohns containing 55 lbs., or in gallons, quarts and pints, in fact any size to suit the purchaser. Place your orders early. Write for quotations.

**THE MARTIN, BOLE & WYNNE CO.**

P. O. DRAWER 1484

WINNIPEG.





# Oranges

Buy your Oranges now. All Oranges from this date will be shipped from California under Refrigeration. That means 30 cents per box advance.

Our prices are:

Sunflower Navels, - \$3.75  
 Marguerite, - 3.50

We have some cheap ones at \$3.00 but don't expect the best at \$3.00

**THE MORPHERSON FRUIT CO.**  
 LIMITED.  
 493 Main St., Winnipeg

Write for prices and Catalogue of

## KOKOMO WOVE WIRE FENCING

Best fence on the market.

**MARSHALL-WELLS CO.**  
 WHOLESALE HARDWARE,  
 WINNIPEG.

## THE WESTERN PACKING COMPANY

Our new abattoir on Alexander avenue is now completed and running, and we are ready to supply the trade both in the city and country with fresh killed meat of finest quality. Mail orders given prompt attention.  
 We are also open to buy live or dressed hogs and all kinds of produce, paying highest cash prices for same.

Abattoir and Offices  
**ALEXANDER AVENUE, - WINNIPEG**

## GALVANIZED IRON

"QUEEN'S HEAD" the best in the world.  
 "FLEUR DE LIS" second only to "Queen's Head."

Every sheet of both brands fully guaranteed

**JOHN LYSAGHT Limited**  
 Makers, BRISTOL, ENG.

**A. C. LESLIE & CO., Montreal**  
 Managers Canadian Branch  
 E. H. BISSETT, Agent, Winnipeg.

## HOLD ON

To your orders for Rubber Footwear for fall, our Travellers are now on the road showing THE MAPLE LEAF Brand Rubbers—something new in shapes, something new in designs.

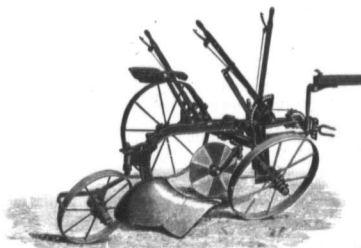
They are recognized as the highest grade (being exclusive manufacturers) of Rubber Footwear. Prices and discounts—the lowest.

N.B.—Drop us a card, if our traveller has not called.

**87 Princess St.  
 Winnipeg.**

**The Kilgour, Rimer Co. Ltd.**

## Cockshutt Plow Co. Ltd.



HIGH GRADE  
**PLOWS, SEEDING MACHINES**  
**CARRIAGES, WAGONS**  
**HARRROWS, WINDMILLS, ETC.**

Dealers who handle our Goods have the best made in Canada.  
 Write for Catalogue.

**Western Branch - Princess St., Winnipeg**  
 FACTORY, BRANTFORD, ONT.

## Headquarters for

**METAL SHINGLES  
 SIDINGS  
 CEILINGS  
 FURNACES  
 STOVES**

Write for Catalogue and Prices.

**GLARE & BROCKEST**  
 WINNIPEG.

Western Agents for  
**CLARE BROS. & CO.**  
 Metal Shingle & Siding Co., Preston, Ont.

## GREENSHIELDS LIMITED

Successors to  
 S. Greenshields &  
 Co. of Montreal

Wholesale.

**DRY GOODS  
 MEN'S FURNISHINGS  
 CARPETS, ETC.**

Wholesale Sample Rooms:

**412-414 McIntyre Block**

Represented by—R. R. GALLAGHER, G. M. NEWTON, A. C. RUSSELL, J. E. WALKER.

## Business Men

We are in business for business, therefore we want

### Your Business

Don't wait for our travellers to call. Send in your orders quick. Complete stock of everything.

### Our Business

**THE IMPERIAL FRUIT  
 & PRODUCE CO. LTD**  
 WINNIPEG, MAN.

## Fruit Jars

Have you placed your order.

Prices advance soon.

Write for particulars.

**Gowans, Kent & Co.**

## WANTED

Every Merchant in the West to see our big range of

## Fur Goods

Our Travellers will give you the opportunity in due season

**EDGAR, CORISTINE & CO**

Successors to Greene & Sons Co.  
 MONTREAL.

## Don't Neglect

as the season is approaching when all hides will require setting. You will do well to ship

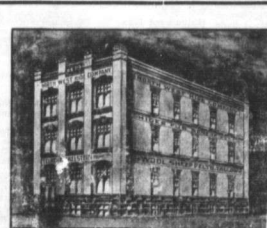
## Your Hides

In advance, before they spoil, ship all kinds of

## Raw Furs

we pay the highest market price.

**NORTH WEST HIDE CO.**  
 Box 615, Winnipeg.



The first  
 has appeal  
 J. D. M.  
 ware store  
 At the I  
 Queen's he  
 Geo. Ash  
 his outfit  
 Wm. Du  
 her outfit  
 View  
 A. E. P.  
 spring ad  
 Elgin.  
 Hutter  
 on, have  
 and shoes.  
 W. Buch  
 smithing  
 M. NEWTON, A. C. RUSSELL,  
 J. E. WALKER.  
 G. W. C.  
 the gener  
 Stapton at  
 If Halls  
 and black  
 strong at  
 The Car  
 age 30,000  
 scription  
 C. Wago  
 machine s  
 shell, form  
 Perry S.  
 Macgregor  
 business C  
 Rosen &  
 Morden, I  
 Nathan R.  
 post.  
 The tra  
 license, a  
 liable to  
 granted.  
 Richard  
 store on E  
 was form  
 Radliffy  
 W. Dun  
 erior busi  
 and will c  
 templates  
 A. H. H  
 bank at E  
 name Hat  
 and insur  
 done.  
 G. B. Jo  
 rans, has  
 Eng. some  
 place, whe  
 fine.  
 At the  
 horn boar  
 ult. W. J.  
 dent, W. W.  
 secretary.  
 W. C. T.  
 meris, Gh  
 ber busin  
 Plumac  
 ware will  
 The E  
 Brandon,  
 cost \$20,0  
 also be m  
 building h  
 The dea  
 of Henry  
 Manitoba  
 Winnipeg,  
 was about  
 Strange  
 Winnipeg,  
 hour's bui  
 the current  
 will be 35  
 in depth.  
 The firm  
 mission  
 been chan  
 James E.  
 with A. E.  
 Vancouver  
 J. T. C  
 out his tw  
 910 Main  
 Mr. Colla  
 in order t  
 wholesale  
 ness.  
 The Ma  
 who have  
 agency fo  
 Chicago,  
 machinery  
 ment for  
 values alt  
 E. H. B.  
 purchas  
 fear of th  
 ing on Ag



WINNIPEG PRICES CURRENT

ADVERTISE.
Businesses for Sale, Partners Wanted,
Travelers Wanted, Businesses Wanted...

DISSOLUTION OF PARTNERSHIP.
J. Gilbert Ross, of the firm certify that
the partnership heretofore existing...

FOR SALE.
A well assorted Stock of Groceries
in the prosperous city of Vernon, B. C.

FOR SALE.
A well assorted stock of general
merchandise in the best town on the P.

\$7,000 TO INVEST.
An Eastern Traveller experienced in
Western Trade, has \$7,000 to invest...

AGENCIES WANTED.
The Hilton Gibson Co., manufacturers
agents, Winnipeg, are looking for agencies...

FOR SALE.
The creamery of the Yorkton Butter
and Cheese Manufacturers Association...



PANTS, STOCKS,
OVERALLS, SHIRTS
Our stock includes every size.

We can ship your order same day as
received.

Write for price list.

THE HOOVER MANUF'G. CO. Ltd.
WINNIPEG.

\*\*\*\*\*

G. W. GRANSTON
Picture Frames
and Mouldings

Wholesale and Retail.

We handle mouldings from the
best Canadian and American
houses. Also picture backing and
mitre machines.

Artists' material, oil paintings,
water colors, engravings, etchings,
photos, photographic supplies.

498 Main Street, Winnipeg.
Tel. 1357.

\*\*\*\*\*

E. Nicholson, who is handling the
Wallaceburg beet sugar in this market...

The spring is backward in the range
country and dogs cattle are beginning
to suffer from the cold weather...

The House at Ottawa, by a vote of
10 to 48 declared its opinion that, in
order to save the youth of the country...

GROCERIES.

Prices to retail dealers for ordinary
lots, with usual discounts for cash or
large lots.

Table listing various grocery items such as Apples, Raisins, Peaches, and their prices per bushel or box.

Table listing various grocery items such as Raspberries, Strawberries, Tomatoes, and their prices.

Table listing various grocery items such as Salmon, Sardines, and their prices.

Table listing various grocery items such as Imp. kippered herrings, Imp. herrings, and their prices.

Table listing various grocery items such as Corn beef, Canned meats, and their prices.

Table listing various grocery items such as Roast beef, Chicken, and their prices.

Table listing various grocery items such as Green Rio, Cereals, and their prices.

Table listing various grocery items such as Split peas, Pearl barley, and their prices.

Table listing various grocery items such as Rice, Beans, and their prices.

Table listing various grocery items such as Currants, Sweet Caporal, and their prices.

Table listing various grocery items such as Old Judge, Sweet Caporal, and their prices.

Table listing various grocery items such as Finnan Haddie, Boned Hake, and their prices.

Table listing various grocery items such as Fish, Pickled fish, and their prices.

Table listing various grocery items such as Currants, Filletras, and their prices.

Table listing various grocery items such as Currants, Filletras, and their prices.

Table listing various grocery items such as Currants, Filletras, and their prices.

Table listing various grocery items such as Currants, Filletras, and their prices.

Table listing various grocery items such as Currants, Filletras, and their prices.

Table listing various grocery items such as Fitted plums, Nectarines, and their prices.

Table listing various grocery items such as Jam, jelly and orange marmalade, and their prices.

Table listing various grocery items such as Telegraph, Matches, and their prices.

Table listing various grocery items such as Headlight, Safety, and their prices.

Table listing various grocery items such as Brazil, Peanuts, and their prices.

Table listing various grocery items such as Raisins, Maple, and their prices.

Table listing various grocery items such as Extra standard sugar, and their prices.

Table listing various grocery items such as Rock salt, Common fine, and their prices.

Table listing various grocery items such as Dairy, White duck sack, and their prices.

Table listing various grocery items such as Assorted herbs, and their prices.

Table listing various grocery items such as Allspice, white, and their prices.

Table listing various grocery items such as Anise, compound, and their prices.

Table listing various grocery items such as Anise, compound, and their prices.

Table listing various grocery items such as Anise, compound, and their prices.

Table listing various grocery items such as Anise, compound, and their prices.

Table listing various grocery items such as Anise, compound, and their prices.

Table listing various grocery items such as Anise, compound, and their prices.

Table listing various grocery items such as Anise, compound, and their prices.

Table listing various grocery items such as Anise, compound, and their prices.

Table listing various grocery items such as Anise, compound, and their prices.

Table listing various grocery items such as Anise, compound, and their prices.

Table listing various grocery items such as Anise, compound, and their prices.

Table listing various grocery items such as Capstan, old, and their prices.

Table listing various grocery items such as Capstan, old, and their prices.

Table listing various grocery items such as Capstan, old, and their prices.

Table listing various grocery items such as Capstan, old, and their prices.

Table listing various grocery items such as Capstan, old, and their prices.

Table listing various grocery items such as Capstan, old, and their prices.

Table listing various grocery items such as Capstan, old, and their prices.

Table listing various grocery items such as Capstan, old, and their prices.

Table listing various grocery items such as Capstan, old, and their prices.

Table listing various grocery items such as Capstan, old, and their prices.

Table listing various grocery items such as Capstan, old, and their prices.

Table listing various grocery items such as Capstan, old, and their prices.

Table listing various grocery items such as Capstan, old, and their prices.

Table listing various grocery items such as Capstan, old, and their prices.

Table listing various grocery items such as Capstan, old, and their prices.

Table listing various grocery items such as Capstan, old, and their prices.

Table listing various grocery items such as Capstan, old, and their prices.

Table listing various grocery items such as Capstan, old, and their prices.

Table listing various grocery items such as Capstan, old, and their prices.

Table listing various grocery items such as Capstan, old, and their prices.

Table listing various grocery items such as Capstan, old, and their prices.

Table listing various grocery items such as Capstan, old, and their prices.





**British Columbia**  
OFFICE OF THE COMMERCIAL

Vancouver Business Review.

Vancouver, March 30.

The C. P. R. strike has somewhat affected business in Vancouver, but there is about over now, so far as any injury to the business community is concerned and dealers can safely expect the delay in Vancouver without fear of delay.

In groceries there is nothing to report.

The four and feed market is very quiet with no changes in prices. In the fruit market there is no change, although it is likely oranges will be much lower very soon, owing to a bountiful crop in California. Early oranges from California is on the market, also rhubarb and lettuce. The prices are very high.

Although the outs have gone up across the line there is no change in price in British Columbia. Butter is now in great abundance. There being a large local supply and a quantity of very fine Ontario butter. Eggs are also very abundant, and weather being so mild. Hens to house egg sellers are numerous. Eggs are also coming from Washington and Oregon State. Lower prices are expected in both butter and eggs.

It is probable that the canning season will be a good run of fish, as it now appears as if no fishermen's union, the union having given up its charter. Besides this there will be a large number of Japanese ready to fish next season.

The lumber industry is still active and numerous timber men representing principally American syndicates, are here looking over the situation. Local and shippers do not complain of a great scarcity of cars, which handicaps them in supplying the Territories. Lumber is abundant. The C. P. R. promises that when the Fernie miners return to work there will be plenty of cars.

Prices at Vancouver.

Vancouver, April 4.

- Special to the Commercial.
- FEED—National Mills chop, \$27 per ton; Grant, \$29, shorts, \$25; oil cake meal, \$30 per ton; F. B. Vancouver, including duty paid on imported stuff.
  - WHEAT—Manitoba, \$29 per ton, United States—\$25 to \$26 per ton.
  - OLIVE—Manitoba patent, per barrel, \$4.80; strong Baker's, \$4.50; per barrel, \$4.70; O. K., \$4.70.
  - WHEAT—Prairie River, Valley, new \$12; straw per bale, \$6.75.
  - MEAL—Rolled oats, 90lb sack, \$3.00; two 4 lb sacks, \$2.30; four 25lb sacks, \$3.00; ten 7lb sacks, \$2.50; oatmeal in 30lb sacks per 100lb \$5.10; in 60lb sacks, \$2.35 per 100lb.
  - LIVE STOCK—Hogs, \$5.35 per 100lb; sheep, \$7.75; steers, \$4.25 per 100lb.
  - POULTRY—Turkey, 15c; geese, 10c; four birds, chickens, \$4.50.
  - DRESSED MEATS—Beef, 5c; mutton, 11c; Calgary frozen mutton, 95c; pork, 12c; veal, \$6.10.
  - CURED MEATS—Hams, 15c; bacon, 12c; long clear, 12c.
  - LARD—Tins, 12c; palms, 17c; tubs, 14c.
  - BUTTER—Local, creamery, 25c; Manitoba, creamery, 25c; Manitoba dairy, 19c.
  - EGGS—Fresh local, 22c.
  - CHEESE—Ontario cheese, 16c.
  - VEGETABLES—Potatoes, local, \$9.10 per ton; Ashcroft, \$9.60 per ton.
  - FISH—Flourishers, 5c; smelt, 3c; sea bass, 4c; whiting, 5c; cod, 5c; halibut, 5c; salmon, 5c; cod, 4c per lb; crabs, 5c per dozen; smoked salmon, 5c; smoked halibut, 10c per lb.
  - GREEN FRUITS—Lemons, \$2.50 per \$3.00; oranges, E. Oregon, \$1 seedling oranges, \$1.75 per \$2; apples, \$1.35 per \$1.50.
  - SUGARS—Powdered, icing and bar, 25c; Fairbank, 25c; granulated, 5c; extra C, 4c; yellow, 4c.
  - SYRUPS—30 gal barrels, 2 1/2 gal, \$1.00; 10 gal, 75c; 5 gal, tins, \$1.25 each; 1 gal, tins, \$4.50 case of 10 1/2 gal, tins, \$2.25 case of 20.
  - HARDWARE—Bar iron, base, \$9.00; horse shoe nails, 6c; 10c, \$10.00 per cent; horse shoes, 60c; nails, base, \$2.50; wire, \$2.50; rope, Manila 1 1/2", white lead, \$7.50; putty, 4c; barbed wire, \$4.00 per 100 lb; glass, first break, 5c

B. C. Business Notes.

Lenz & Leter, of Victoria and Vancouver, have secured a building in which they will establish a garment making industry. They produce suits. The firm is taking out a charter and providing itself with the necessary tools to expand in this way. Hats, pants and overalls will be the leading lines manufactured. Later ladies blouses will be added.

The government of British Columbia has decided not to enforce the law respecting the carrying of arms while doing business in that province to pay as on their profits. In the courts the Ogilvie Mills Co. and the Waterloo Engine Co. were recently called upon to pay such taxation. Now the government has decided not to collect. These companies were used to treat the law.

As a general meeting of the shareholders of the British Columbia Coal Company, held in Grand Forks on March 23, the organization of this company was effected. A supply of coaling coal exists upon the north fork of the Kettle river, within fifty miles of Grand Forks. It is a large coal field and the development of this coal field is under way. It is expected to occasion the erection of at least one or two collieries at Grand Forks. Work will begin in a few days.

The Watson Patents, Ltd., is incorporated in British Columbia, with a capital of \$50,000. It takes over the patents in connection with car tenders and to manufacture these. Among other companies now in its portfolio are incorporated are: The Golden Meat Company, Limited, with a capitalization of \$100,000; the Elk Lumber & Manufacturing Company, Limited, with a capitalization of \$250,000; the New Westminster, with a capitalization of \$25,000; and the Kettle River Lumber Company, Limited, with a capitalization of \$50,000, for the purpose of operating the business of Bernard Lequesne, at the Waterloo Falls, of Grand Forks.

A wire from Fernie, B. C., on Tuesday said that the Canadian posted notices this morning announcing that the mines would be opened of April 1, and that all mines desiring employment are to apply at the mine superintendent's office at Coal Creek. The regular train schedules was put in force and two coaches were crowded with men seeking employment. The Canadian Railway had a special meeting this morning, when they decided to give up the struggle and go to work. The three members appointed by this local union for the district union executive were authorized to sign the contract, and thus the last vestige of opposition has disappeared, and the strike is at an end. The men are ready to go to work and are ready for use at a moment's notice. By the latter end of the week coal will be manufactured.

Irrigation needed in the U. S.

In a recent interview on the question of government subsidies, James J. Hill, president of the Great T. & N. Co., said: "The country is just as follows by the Washington correspondent of the Chicago Record-Herald: 'So far as I am personally concerned I would put the money into irrigation, ditches and reservoirs, and try to furnish homes for the coming generations that are beginning to crowd each other out of the land. And in some figures running in my mind. At the time the civil war closed we had a population of 39,000,000 men. It has been increasing at the rate of 1,600,000 every year since. At that rate the population will be 100,000,000 in the entire population in 1865. The census reports since 1790 show that we double our population every thirty years.'

'At the close of the civil war all the land of the country in the western Iowa, western Minnesota and west of the Mississippi River to the Pacific coast was unoccupied. It is today, speaking generally, there is no arable land to be had anywhere upon the continent. There is not an acre of public land where a man can raise a crop of potatoes or grain without irrigation. The thirty-seven years ago, place in the last thirty-seven years, what shall we expect in the next thirty-seven years? Where are the people to live who come to us from foreign countries at the rate of half a million a year, and what are we go-

ing to do with the natural increase of our own people?'

'The Northwest is already getting so crowded that more than 25,000 farmers have gone over the line into British territory. The Canadians claim 75,000 on this excessive. They were good farmers, industrious, intelligent, and well-to-do, and had the capital to buy outright from 1,000 to 2,000 acres of land from the Dominion government, and have taken the oath of allegiance to King Edward. We could have kept them on our own side of the border if we could have given them irrigated lands.'

'One thousand acres with irrigation is as good as 5,000 acres without; that is, as many people can be maintained upon a thousand acres under irrigation as upon 5,000 acres of fertile soil depending upon nature's rainfall. Therefore, if we can make one acre of land do the work of five, it is worth while trying it. Irrigated lands sell for \$15 and \$20 an acre. Arid land without irrigation is practically worthless, and I can think of no better investment for the government, no more profitable speculation, so as to speak, than to build a great reservoir and irrigating ditches in favorable districts where it can be done at a small cost and thus convert worthless land into twenty-dollar-an-acre farms. It would only need a small amount of capital to start with, and the proceeds could be set aside as a fund to keep the scheme going—to build more reservoirs and more irrigating ditches until the profits grew into enormous sums, when they could be added to the public revenues.'

Output of Pig Iron.

The Bulletin of the American Iron and Steel Association has received from the manufacturers complete statistics of the production of all kinds of pig iron in the United States in 1902. The total production of pig iron in 1902 was 17,821,307 gross tons, against 15,578,354 tons in 1901 and 13,780,242 tons in 1900. The increase in production the second half of 1902 over the first half of the year was 294,150

tons. The total increases in 1902 over 1901 was 1,942,953 tons. The Bulletin says:

'It is remarkable that there should have been such a large increase in production in 1902, when there were serious adverse conditions to contend with, chiefly, inadequate transportation facilities, resulting in a short supply of coke and iron ore and the banking for longer or shorter periods of many furnaces. The anthracite coal strike also seriously interfered with the activity of many eastern furnaces.'

The production of Bessemir and low-phosphorus pig iron in 1902 was 10,393,198 tons, against 9,599,739 tons in 1901. Of basic pig iron, 2,028,500 tons were made, against 1,448,500 tons in 1901. The output of chrome pig iron was 278,504 tons, against 190,147 tons in 1901. The production of mixed charcoal and coke pig iron was 11,605 tons, against 23,294 tons in 1901. Of speigleisen and ferromanganese there were made 212,281 tons, against 291,461 tons in 1901.

In 1901 the country made more pig iron than Great Britain and Germany combined, and in 1902, the United States made more than those two countries and Belgium combined. The stocks of pig iron which were un sold in the hands of manufacturers or which were under their control at the close of 1902, and were not intended for their own consumption, amounted to 40,051 tons, against 39,947 tons at the close of 1901 and 442,370 tons at the close of 1900.

The American Pig Iron Storage Warrant Company held no pig iron whatever in any of its yards on December 31, 1902. This is the first time since its organization in 1889 that the quantity of pig iron in its yards at the close of a calendar year. At the end of 1901 it had 3,000 tons. The whole number of furnaces in blast on December 31, 1902, was 207, against 266 on December 31, 1901, and 232 on December 31, 1900. The largest producing states were: Pennsylvania, 8,117,800 tons; Ohio, 3,681,388; Illinois, 1,730,220; Alabama, 1,472,211; Virginia, 537,216.

IN NEW BUILDINGS OR OLD

IF YOU WANT HIGHEST EXCELLENCE  
YOU WILL USE OUR

Metallitic Ceilings  
and Walls

Because they give more lasting satisfaction  
—are strictly sanitary—and are made in a multitude of artistic designs to suit all tastes and requirements.

We offer you very best value to be found in these reliable goods. Made by The Metallitic Roofing Co., Ltd., of Toronto.

THOS. BLACK

131 BANNATYNE AVE. WINNIPEG

Toronto Wholesale Trade.

Chicago to The Commercial.
Baled Hay—No. 2, \$7 to \$7.50 per ton.
Dry Goods—Moderately active and firm...

Toronto Grain and Produce.

Chicago to The Commercial.
Wheat is in better demand and winter grades are 1c higher. Manitoba wheat is also firmer...

Montreal Live Stock.

At the East End abattoir on Monday receipts included 700 cattle.
There is no such activity in the condition of the market as compared with last Thursday...

Montreal, April 3.

Receipts at the East End abattoir on Thursday included 900 cattle, 1,000 calves and 80 sheep and lambs.
Butchers' cattle were 4 1/2c to 5c...

Toronto Live Stock.

Special to The Commercial.
The run amounted to 65 cars, containing 1,187 cattle, 214 sheep, 688 hogs and 10 calves.
There were quite a few export cattle offered, though evidently the bulk of these are being held for the opening of navigation...

FRIDAY'S MARKET.

Toronto, April 4.
Receipts at the abattoir yesterday were 51 cars, including 200 sheep and lambs, and 100 hogs.
Export cattle met with special demand and were dull. Very few choice animals offered...

Hogs and Hog Produce.

Special to The Commercial.
Montreal, April 3.
Hog produce are in good demand and firm. Farmers' lots of dressed hogs are quoted somewhat lower today.
Dressed Hogs—Farmers' lots, dressed, \$7.50.

Chicago Board of Trade Prices.

Table with columns for various commodities (Wheat, Corn, etc.) and their prices for different months (May, July, Sept).

Late Western Business Items.

J. A. Ball is opening a tailor shop at Elm Street.
W. B. Skinner has opened a shoe store at Mount Pleasant, B. C.
John A. Fraser, of Nanaimo, Ont., is opening a general store at Manitou, Man.
Mr. Melkidejko, a new arrival from the east, is opening a grocery store at...

New York Wheat.

Table showing closing prices for wheat in New York for various months.

Minneapolis Wheat.

Table showing closing prices for wheat in Minneapolis for various months.

Duluth Wheat.

Table showing closing prices for wheat in Duluth for various months.

British Live Stock Markets.

London, March 30.—American cattle, 6 1/2d to 6 3/4d; sheep, 6 1/2d to 7d.
Canadian cattle, 6 1/2d to 6 3/4d.

London Sugar Market.

Special to The Commercial.
London, April 3.
April sugar, 8 1/2d.

Winnipeg Board of Trade.

A meeting of the council of the board was held on Friday. A committee report was adopted opposing the erection of bridges over the Assiniboine river without assent spans.
A letter was read from the Liverpool stand trade without assent spans against any amendment being made to the Manitoba Grain Inspection Act...

Farming in France.

The land of the Rhone Valley in France is covered with luxuriant crops. There are no moors and no trees' great patchwork stretches out on every side the eye can reach.
The women here wear the same as the men. They do all sorts of field work and are not considered over every landscape. They are more thrifty than the men, and they are among the best of the French people.
The work among the farmers goes on throughout the week, and the men are not considered over every landscape. They are more thrifty than the men, and they are among the best of the French people.
The work among the farmers goes on throughout the week, and the men are not considered over every landscape. They are more thrifty than the men, and they are among the best of the French people.

Stocks of points of Montreal Toronto Detroit Chicago
Total of States beginning 1902 to end of period of
Winnipeg
Total of States beginning 1902 to end of period of
Winnipeg
Total of States beginning 1902 to end of period of
Winnipeg



STATISTICAL WHEAT REPORT.

WHEAT IN CANADA. Stocks of wheat in Canada at principal points of accumulation are reported as follows: Montreal 165,000; Toronto 25,000; Wood River, Ont. 40,000; Coburn 25,000; Port William, Fort Arthur and Keewatin 639,000; Winnipeg 25,000; Manitoba elevators 11,860,000.

BREADSTREET'S REPORT OF STOCKS. Total stocks in the United States and Canada east of the Rocky Mountains, as reported by breadstreet's, March 21, were 22,460,000 bushels, as against 74,114,000 bushels the previous week.

THE VISIBLE SUPPLY. The Chicago visible supply statement of stocks in the United States and Canada east of the Rocky Mountains, for the week ending March 25, was 42,291,000 bushels, being a decrease of 2,764,000 bushels for the week.

WORLD'S WHEAT STOCKS. Stocks of wheat in America and Europe and east of the Rocky Mountains in each year for a series of years, were as follows—breadstreet's report:

WHEAT MOVEMENT. The following table gives the receipts of wheat at the four principal United States spring wheat markets, from the beginning of the movement, Aug. 1, 1902, to date, compared with the same period of last year:

Western Grain Stocks. Stocks of grain at Fort William and Port Arthur on Saturday, March 25, were as follows:

Fort William. Wheat—1 Hard 1,106,477; 2 Northern 602,246; 3 Northern 599,708; 2 Northern 1,127,915; Other grades 125,960.

Port Arthur. Wheat—1 Hard 897,673; 2 Northern 92,476; 3 Northern 495,844; 2 Northern 161,989; Other grades 310,367.

Winnipeg Grain Inspection. During the ten days ending March 21 there were country points at Winnipeg 772 cars of grain, comprising the following:

Wheat. 1 Hard 258; 1 Northern 117; 2 Northern 82; 3 Northern 138; No. 4 40; Feed 9; Rejected 2 4; No grade 4; Unaccounted 2.

Winnipeg Grain Inspection. During the ten days ending March 21 there were country points at Winnipeg 772 cars of grain, comprising the following:

Wheat. 1 Hard 258; 1 Northern 117; 2 Northern 82; 3 Northern 138; No. 4 40; Feed 9; Rejected 2 4; No grade 4; Unaccounted 2.

Wheat, all grades 392; Car. 270; Oats, all grades 229; Barley, all grades 31; Flaxseed, all grades 31.

Grain and Milling Notes. Persistent drought is causing great anxiety among the farmers of Romania. The wheat is suffering greatly from lack of rain, and the Coiza crop is already regarded as lost.

The annual report of the Minneapolis chamber of commerce shows a good crop in the Minneapolis grain and milling trade. Wheat receipts were 88,702,129 bushels, of which 22,100,000 were in the month of March.

Montreal Trade Bulletin. Between 400,000 and 500,000 bushels of Manitoba wheat was reported sold within the past two or three days on a c.i.f. basis to Buffalo at about 70 1/2 to 70 3/4.

Last week we reported the freight engagement of 500,000 bushels of wheat, all rail, from Fort William to Montreal, at 3c per bushel, says the Montreal Trade Bulletin, and we now hear the C. P. R. has engaged to bring on 1,000,000 bushels by rail.

During the next six months great developments are expected in establishing a system of wireless telegraphy throughout the United States and Canada. It is believed that New York and Montreal will soon be supplied with long distance connections and be regularly equipped for the handling of messages by wireless systems.

McLAUGHLIN & ELLIS, Grain Exchange, Winnipeg, Chamber of Commerce, Minneapolis. HIGHEST PRICES PAID. LIBERAL ADVANCES. References: The Canadian Bank of Commerce; Commercial Agencies.

THE NORTHERN ELEVATOR CO. LIMITED GRAIN. HEAD OFFICE WINNIPEG. Branch Offices: Montreal, New York, London, Eng.

ROBT. MUIR & CO. Grain Dealers and Millers. 8 Bishops of West, Oats, Barley, Flax, Flour, Bran, Shorts, Chop. Buy or sell on commission. Branch Office: Winnipeg, Man.

ALEX. MCFEE & CO. GRAIN EXPORTERS. MONTREAL AND WINNIPEG. C. A. YOUNG, Manager.

THE DOMINION ELEVATOR CO. LIMITED GRAIN EXPORTERS. Office: WINNIPEG. GRAIN EXCHANGE - WINNIPEG.

MANITOBA COMMISSION CO. LTD. (Licensed and Bonded.) GRAIN DEALERS. Members Winnipeg Grain Exchange. 221 Manitoba street. Telephone 1948. 361 Grain Exchange, Winnipeg. H. B. Peterson, Manager.

GRAIN COMMISSION MERCHANTS Winnipeg and Brandon. WHEAT, OATS, BARLEY AND FLOUR. Correspondence Solicited.

ALEX. CAVANAGH Grain and Commission Merchant. Office: Kingston, Toronto and Gravel Exchange Winnipeg. Care of block lots. Please ask for quotations. Reference, Merchants Bank.

Since January the Canadian Northern Railway has transported over 2,000,000 feet of sawlogs from Whitefish and other points for the Pigeon River Lumber Co.'s mills at Fort Arthur.



WINNIPEG GRAIN AND PRODUCE EXCHANGE. F. PHILLIPS, President. A. R. HARGREAVES, CHAS. N. BELL, Vice-President. Sec'y-Treas.

KIRKPATRICK & COOKSON MONTREAL. Consignments of Grain and Country Produce solicited. F.O.B. Offers of Wheat, Barley, Oats, etc., requested. Established 1860, Manitoba Grain Code used.

THE WINNIPEG ELEVATOR CO. LIMITED GRAIN EXPORTERS. Office: Grain Exchange, Winnipeg.

W. GIBBINS & CO. (Licensed and Bonded.) GRAIN BROKERS AND DEALERS. Grain Exchange, Winnipeg. Wheat, oats, barley, flaxseed. Futures handled for local or United States markets. Correspondence invited. Liberal advances on consignments.

E. O'REILLY Of Jas. Richardson & Sons. GRAIN EXPORTERS. Office: Kingston, Toronto and Gravel Exchange Winnipeg. Care of block lots. Please ask for quotations. Reference, Merchants Bank.

JAS. CARRUTHERS & CO. Limited. GRAIN EXPORTERS. MONTREAL TORONTO, WINNIPEG.

THOMPSON, SONS & CO. GRAIN COMMISSION MERCHANTS WINNIPEG - MAN. Sell your Grain through a Strictly Commission House. Highest prices obtained. Quick Returns. Consignments and Correspondence Solicited. Farmers need not wire for track bids.

## New Twine Prices.

Promptly on the first of April all the companies manufacturing binder twine for this market announced their prices for 1903 as they had promised to do. Great interest attached to this announcement as practically all the twine business of the United States and Canada must be booked after the prices are given out. A good deal of trade is, of course, booked provisionally beforehand, but this is always subject to confirmation after prices are announced. Travellers are now busy securing final confirmation of Manitoba business. The new prices are lower by 1/4 to 1/2c than most of the makers expected and are therefore very satisfactory to the trade. Pure manilla twine is now listed at 13c per pound which is 2c below the opening of last year; 600 foot manilla is now 12c, a reduction of 1/4c as compared with a year ago, while sisal and standard are 1/2c lower than a year ago at 10 1/2c. Last year the prices were announced on March 1st, a month earlier than this year. The new prices with comparisons are as follows:

Jute, per lb. . . . .	8 1/2	1902
American . . . . .	10 1/2	
Sisal . . . . .	10 1/2	11
Standard . . . . .	10 1/2	11
Manilla 550 foot . . . . .	11 1/4	11 1/2
Manilla 600 foot . . . . .	12	13 1/2
Manilla pure . . . . .	13	15 1/2

These prices are F.O.B. Chicago and are subject to a discount of 1/2c per pound on orders of five tons or over and of 1/4c on cartlot orders, these discounts being the same as last season.

It will be seen from the above list that makers are offering new lines this season, namely, Jute and American. These are composed in whole or in part of jute fibre, the latter brand being a mixture of jute and sisal.

A further letter has been received by the secretary of the grain exchange from Superintendent Leonard, stating that in addition to the list of sidings given in his letter on the 23rd March, one will be put in between Holland and Cypress, Man., for the accommodation of farmers and the grain trade.

# RAT PORTAGE LUMBER COMPANY

LIMITED

Head Office and Mills at RAT PORTAGE, ONT.

## TO ADVERTISERS.

Friday next being a public holiday there will be no printing done on the Commercial that day. Advertisers are, therefore, asked to send in copy for changes one day earlier than usual, in order to ensure proper attention.

## Implement Shipments.

Implement dealers have had some little trouble lately in getting shipments owing to lack of cars and slow railway service. This matter has lately been taken up between the Winnipeg Wholesale Implement Dealers Association and the general freight agent of the C. P. R. with the result that Mr. Lanigan is now asking that particulars regarding all cars delayed in transit be furnished him so that these may be traced and rushed to their destination. He also states that hereafter all cars of implements intended for spring work will be "red-carded," thus insuring quickest possible dispatch.

The London Times is the first newspaper to institute a regular mail-order service. Some of its American dispatches are now received in that way.

MANUFACTURERS OF . .

## LUMBER, LATH, SHINGLES, SASH, DOORS

AND ALL KINDS  
OF WOODWORK

Branch: Point Douglas Avenue, WINNIPEG

## The Great-West Life ASSURANCE CO.

Has just completed its tenth year with business in force of over \$15,000,000.00, Annual premium income thereon over \$500,000.00. A record unparalleled in the history of Life Insurance.

WINNIPEG, JAN. 1ST, 1903

**SHIP YOUR**

# RAW FURS

**Hides, Deerskins and Seneca**

**To McMILLAN FUR AND WOOL COMPANY**

200 to 212 First Avenue North,  
MINNEAPOLIS, MINN.

No duty on raw furs, deerskins, or seneca.  
There is a duty on green hides or skins, and dry hides over 11lbs. of 15 per cent. of the Winnipeg wholesale price, less freight to Winnipeg. Hides under these weights admitted free. WRITE FOR CIRCULARS.

## FRANK LIGHTCAP

DEALER IN  
**HIDES FELTS, WOOL,  
SEWED, Etc.**

EXPORTER OF  
**NORTHERN FURS**

Highest prices paid for consignments and returns promptly made.

Write for circulars containing market reports and full quotations.

172-174 KING ST., WINNIPEG.

P. O. BOX 484.

THE

## Frost

is the strongest and best wire made.

Coiled Wire is preferable to barb. For prices on Galvanized, Soft or Steel Wire, any size, see Commercial List, or write

**Manitoba Frost Wire  
Fence Co.**

Office 415 McIntyre Bldg., Wintipeg, Man.

## Beeman Grain Cleaners

ARE THE BEST.



They separate chaff from wheat, wild or tame oats from wheat or barley, cockle and all foil seeds; cleanse flax, timothy, clover, etc., perfectly.

Want to raise your wheat from one to three grades by separating all frosted, sprouted or shrunken kernels?

Want to clean and bluestone your wheat at one operation? crushing in tallings and screenings all at the same time.

IF SO, OUR JUMBO WILL DO IT FOR YOU.

Write for catalogue and prices. Dealers make money selling our machines.

FACTORIES:  
Winnipeg, Man.; Minneapolis, Minn.

## BEEMAN & CO.

121 Higgins Ave., WINNIPEG, MAN.

The new building of James Coristine & Co. Monday has been completed, and is now occupied. It covers an area of one hundred and twenty square feet on St. Nicholas street, and one hundred feet on Leinster street. The floor capacity is from fifteen to twenty thousand feet each floor, and the building is seven stories high.

The fur factory is placed on the top floor, in order to get light, which is one of the greatest essentials in fur manufacture. James Coristine & Co. have obtained this desired requirement in their premises, and they have one of the largest and most up-to-date fur factories in Canada. Their facilities for turning out fur goods for the coming season are second to none.

The outlook at the present time is that the season will be a very brisk one. Notwithstanding the fact that the prices of raw materials have very greatly advanced in price, the March sales show a great gain over all previous years.

It will therefore be wisdom on the part of intending purchasers to place orders early, as no doubt prices on fur goods will have an advance later.

James Coristine & Co. expected an advance in fur prices, and accordingly purchased heavily of raw furs last

year, and are therefore in a position to fill early orders at nearly former quotations.

Their representatives in the west are W. G. Elliott, C. Henderson and T. C. Johnston.

The stock rooms of the new Coristine building are up-to-date in every respect, and have a large capacity. They are at the same time fitted with the latest appliances for handling orders with the utmost dispatch.

The increasing demand for the goods of James Coristine & Co. has rendered this mammoth new factory necessary, and even in this they expect to have their capacity taxed. Their specialties shown this year in ladies' neckwear, etc., are meeting with large sales, and remote travellers send in are very encouraging.

Their lines of cloth caps are another feature which have been selected with great care and sell freely.

James Coristine & Co. also call attention to their Buffalo and Northwest robes, which are being shown by their representatives, and are worthy of inspection. In their hat department the latest novelties are being shown, and if their travellers do not call on the retail trade in good time the firm will be pleased to forward samples of the latest American styles if customers will write to Montreal.

A big Manitoba notice involved several lands on John Handley is or been put some time the expense way of secured Jervis in the Bankers the Lacey Guaranteed of between made on burler has He will a thorough be made.

Vancouver of ten cent of shirtings, will be tending to the local that the have come without a shingles Territories per thousand about to will be selling at Shingling cost of per 150 per cent been advertised state that has increased. ment is very advisable. cruing in lumber. For this and the

See page 722

T

**Big Timber Deal.**

A big timber deal, in which a leading lumber dealer is interested, is announced at Vancouver. The amount involved is \$47,000, and the buyer of several thousand cords of timber lands on the northern coast is Mr. John Hanbury, of Brandon, Man. The deal is one of the largest that has been put through in Vancouver for some time, and will eventually mean the expenditure of a large sum by way of development. The property secured is in different sections at various places, between Vancouver and Jervis inlet. The former owners were the Bank of British North America, the Lacey estate and the Yorkshire Guarantee company. A first payment of between \$5,000 and \$10,000 was made on the property, and Mr. Hanbury has practically taken it over. He will shortly send out one or more timber cruisers to go over the property with local timber experts, and a thorough inspection will it before he made.

**Shingles Advanced.**

Vancouver, April 2.—The advance of ten cents per thousand in the price of shingles, which takes effect on April 1, will not be felt locally, as it is intended to apply only to that territory lying east of the Rocky Mountains—the locality whence proceeds the cry that the British Columbia lumbermen have conspired to put the price up without justification. The price of shingles laid down in the Northwest Territories and Manitoba is now \$2-03 per thousand. Under the price scale about to be placed in effect the price will be \$2-75. Locally shingles are selling at \$2-25 per thousand.

Shingle manufacturers claim that within the past six or seven years the cost of production has increased fully 150 per cent, and the selling price has been advanced but 35 per cent. They state that the cost of timber and labor has increased 150 per cent in the aggregate. Even the provincial government is reported to be considering the advisability of raising the revenue accruing from the taxation of the various lumbering interests.

For these reasons the lumbermen and the shinglemen state they are

perfectly justified in advancing the price of the manufactured product. In fact they state that the selling price is yet far to low when the enormous increase in the cost of production during the last few years is taken into consideration.

**C. P. R. Extensions.**

The C. P. R. will commence grading on the Kirkfield extension of the road as soon as the frost is out of the ground, and the contracts for all the work will be let shortly. How much of the line will be graded this year the company cannot say, but it is likely that half of the road to Saskatchewan will be completed.

A. L. Buck, who has been out with a party of surveyors locating the line, has returned to the city, having completed the entire location of the line into Saskatchewan. The portion to be built this year runs from Neudorf, the present terminus, through to Belcarra, and from there towards the Strassburg and Last Mountain district, running about ten miles north of Last Mountain Lake, thence west, and touching the northern limit of Little Manitoulin Lake and almost as the crow flies from there to Saskatchewan.

It is also reported that surveys are to be made shortly for the purpose of running a branch of this line south of Last Mountain reserve through the Strassburg district, where a thriving settlement has already been established. This branch will, no doubt, if built this year, open up a part of the country that is at present attracting a good deal of attention.

**British Columbia Legislature.**

Victoria, B. C., April 2.—The fourth session of the ninth legislature of British Columbia was opened this afternoon with the usual formalities by the Lieut.-Governor Sir Henri Joly de Loebiniere, who was attended by a guard of honor from the Fifth Regiment of the New Canadian army and a brilliantly uniformed staff consisting of naval officers from the warships at Esquimalt, officers of the marines at Work Point and the commanding officer and militia officers. The speech from the throne delivered at the opening announced the intention of bringing in legislation to consolidate and amend the mining laws, abolish the two per cent. tax on mines, and to re-nact

the anti-Oriental legislation which has been disallowed by the Dominion government. Another feature was the announcement of the intended legislation to provide machinery for the settlement of disputes between labor and capital. The scheme proposed provides that when a dispute arises the employer will appoint an arbitrator, the men will also appoint a representative, and these two will select a third. In the event of either side refusing to act after five days' notice being given, the other party may apply to the courts, and the judge will appoint an arbitrator for the side which declined to take action, and the two thus chosen will select the third. This committee will have power to examine witnesses under oath, send for documents, etc., and to find on this evidence. If the parties to the dispute fail to accept the findings of the committee, the latter will then publish all the evidence in the provincial Gazette and allow the public to make their own conclusions.

**Charges Against Lumber Association.**

The civic committee appointed to investigate the charges of illegal combination made against the Western Canada Lumbermen's association finished its report to the city council at the regular meeting of that body on Monday night. Last Thursday's meeting of the committee was abortive, as the association refused to submit any information. Its representatives claiming that Mr. Sprague's offer to furnish information was misunderstood.

The committee was composed of Aldermen Russell, McCarthy and Barclay. Mr. A. J. Andrews represented those complaining of the alleged combine and with him were Messrs. J. M. Scroggie, T. D. Robinson, and W. T. Creighton, lumber dealers.

Mr. D. E. Sprague and Mr. J. L. Campbell, of Melita, two officials of the association, which is charged with illegal combination were present to offer a defence. When the meeting opened Mr. Sprague who had promised to assist in the investigation of the charges, refused to make any statements bearing on the association's side of the question unless such statements were made in secret, the committee only being permitted to hear them. Aid. Russell, chairman of the committee, claimed that as the press and the general public were allowed to attend the meeting at which the other side of the question was stated, it would be unfair to exclude while the association stated its case. Mr. Russell, further said that he would not act on a committee which would act in that

manner. Mr. Sprague claimed that these were the conditions on which he volunteered to give the information. He did not object to the other meeting being held in secret and professed surprise at its being made public. His idea was that each side should present its case to the committee and then allow the committee to make its own report to the council.

The members of the committee then stated that they understood that both sides should present their cases individually and at different times, but did not know of any provision being made for the meetings to be held in secret. They thought that Mr. Sprague objected to having Mr. Andrews or his clients present as participants at the meeting when he made his statements in defence.

Nothing tangible was done at the meetings and the committee will evidence offered by one side only. Mr. Sprague and Mr. Campbell believe that their association was legal and was organized on lines similar to that of the dentists, doctors, veterinarians and others. As an excuse for not giving the information of a public meeting, Mr. Sprague said that a great deal of what he had to say and submit was of a private nature and not intended for everybody. He had no objections to submitting it to the committee and reiterated his offer to do so providing it could be given in private.

**Inland Revenue.**

The inland revenue receipts for the division of Winnipeg during the month of March were as follows:

Spirits	\$38,379.15
Mail	3,261.40
Tobacco	14,158.00
Raw Leaf Tobacco	1,236.45
Cigars	3,177.00
Bonded Factory	25.00
Licenses	25.00
Methylated Spirits	94.87
<b>Total March, 1902</b>	<b>\$62,345.47</b>
<b>Total March, 1901</b>	<b>\$32,325.06</b>
<b>Increase</b>	<b>\$30,020.41</b>

The customs revenue of the Dominion for the nine months ending March 31 shows an increase of \$3,106,621, as compared with the same last year. The revenue for the nine months was \$26,705,229, as against \$23,598,608 for last year. The revenue for the month of March was \$3,271,186, an increase of \$547,783 over March, 1902.



# Starch

NOVEL INVENTION  
REQUIRES NO COOKING

For Collars, Cuffs, Shirt Bosoms and  
Line Laundry purposes. The Brantford  
has no equal, look up the mark and take  
the name.

MADE IN CANADA  
THE BRANTFORD STARCH CO.  
BRANTFORD, ONT.

## Goods that Sell Every Day

STARCH

Never stands long on your shelves

BECAUSE it is POPULAR and POPULARITY  
is the proof of MERIT

# The Brantford Starch Works

LIMITED,  
Brantford, Ont.

JOS. E. HUXLEY, Winnipeg Agent.



# The Glittering Golden Grains Produced In the Granary of the Empire

Are not more profitable to the producer than are

**BEE  
BRAND  
GOODS**

are not going to  
be known as  
Shopkeepers—

**THEY  
MUST  
MOVE**

# BEE BRAND GOODS

To the LIVE GROCER who will give us his  
assistance in introducing them to the consuming  
public.

And in order to move them the more easily we are offering to the consumer the  
following inducements:

For every 10 Coupons "BEE BRAND" we will give a 5c. package Free.  
For every 20 Coupons do. we will give a 10c. package Free.  
For every 30 Coupons do. we will give a lb. tin Bee Coffee.  
For every 50 Coupons do. we will give a sett of the famous

**BEE STARCH MONS**  
that won't drop of the handle

To make this easy for the consumer we ask all handlers of the BEE GOODS  
to redeem these coupons as presented and we will redeem same either in cash or  
goods at their face value—There are a good many of the old coupons out but we  
will accept them just the same.

All Grocers like  
Live Sellers and  
that is what we  
want to make.

<b>BEE STARCH</b>	The perfect laundry starch.
<b>BEE SODA</b>	Snow white purity—compare it with others.
<b>BEE BORAX</b>	Purest powdered particles (balloon dust)
<b>BEE COFFEE</b>	Liquified luxury.

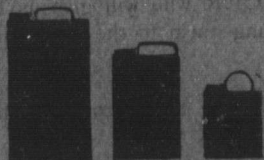
THE COUPONS WILL BE REDEEMED EITHER BY

**ALEX. MARSHALL**  
VANCOUVER

**TOMS & DAVIDSON**  
WINNIPEG

**OF THE BEE STARCH CO.**  
MONTREAL

# IMPERIAL MAPLE SYRUP



A rich, sweet delicacy to charm the most fastidious taste. This Syrup is fit to grace any table in the land. A pure, wholesome product of the Canadian Maple Tree, the best the country can produce.

Put up in tins, hermetically sealed, and labelled with the Imperial Brand.

Ask for Imperial Maple Syrup and accept no substitute.

## Imperial Syrup Co., Montreal

### W. L. MacKenzie & Co., Agents, Winnipeg

THE  
Rev.  
Beren's  
jurnal  
com. in  
dog trav  
Flb. T  
making  
look aft  
of the  
cher m  
and set  
were F  
Hiver, B  
Hallow  
He had  
and on  
any w  
belonct  
many;  
tully r  
Garry o  
Mr. S  
out of  
remaind  
and she  
along t  
home, o  
reluctan  
monete  
were 5  
suffered  
times. I  
and in  
improve  
his trip  
In the  
Lake W  
served  
Brandi  
the lake  
they ha  
purpose  
ing of  
water h  
near the  
and ev  
the hour  
emigrate  
between  
to 70 m

THE LAKE WINNIPEG REGION.

Rev. J. Semmens, inspector of the Beren's River Indian agency, has returned from his semi-annual inspection, having travelled 700 miles by dog train, between Jan 26 and March 7th. The reserves which he visited, making the necessary stay at each, to look after the cattle, visit the homes of the people, making sanitary and other suggestions, hearing law cases and settling disputes and difficulties, were Fisher River, Jack Head, Poplar River, Beren's River, Blood Vein River, Hollow Water River and Black River. He had an Indian assistant with him and on the way out travelled in company with ten cow teams, fifty dogs, belonging to the Hudson's Bay company. This lively party was beautifully photographed at Lower Fort Garry on the way out.

Mr. Semmens spent about ten nights out of doors on his trip, during the remainder of the time he managed to eat and sleep in some house or shanty along the roadside, some hunter's home, or some trader's or settler's or missionary's abode. The thermometer readings which he observed were 45, 48 and 52 below zero. He suffered a good deal from cold at times, but returned to the city rugged in appearance and apparently improved rather than exhausted by his trip.

In the Icelandic settlement west of Lake Winnipeg, Mr. Semmens observed a movement from north of Icelandic river away from the shores of the lake to the interior. Years ago they had settled near the lake for the purpose of growing up for the raising of stock, but for some years the water has kept rising until last summer the climax was reached by the water quite covering over the land and even in some cases entering the houses. The result of this is an migration to a large tract of country between Arnis and Stonewall, some 60 to 70 miles southward.

Left His Island.

Mr. Semmens met several families with their loads of household effects, making this journey to start new homes. Noticing that a farm on Goose island appeared to have been abandoned, he made inquiry and learned that the owner had moved away last summer, leaving his fine house and other buildings, for the reason that the island had been overgrown. He had gone to Shoal Lake where he was doing well. Goose Island, which he had left, is a small island of 200 to 300 acres, but until recently it constituted a fair sized farm and afforded a comfortable living to its owner. The settlers who are moving are finding very good land in the district where they are locating. At first they will be a long distance from market, but they hope in due time to have a branch line extended from Balmoral to their vicinity.

Vast and Varied Resources.

During his journey Mr. Semmens was impressed more than ever with the thought of the vast resources of Lake Winnipeg and vicinity, which are still almost unknown and undeveloped. He wondered, in view of the great cost of fuel during the present winter, hearing so hearing of the poor, that nothing has been attempted looking towards the utilization of the thousands of tons of peat which is so easily obtainable at Limestone Bay on the northwest shore of Lake Winnipeg between the mouth of the Saskatchewan and the source of the Nelson. He could never understand why, with fuel so costly, no attempt should have been made to develop these vast deposits which would go so far towards solving the serious problem.

Wondrous Wealth in Fish.

Another striking feature of Lake Winnipeg activity was the movement of fish. In going northward one is compelled to turn out every few minutes for loads of fish which he meets, coming in strings of five or six teams, towards Selkirk. Mr. Semmens is quite positive that if all the teams that have come in this winter were ranged in a line they would extend from Selkirk to Beren's River. The spectacle,

he suggests, bore strong testimony to the wondrous wealth of the lake in fish; and notwithstanding the great quantities of fish caught, both summer and winter, the actual diminution is reported. Almost every point on the lake is occupied by men who are getting wealth out of the waters.

Another fact which has many times been impressed on the agent's mind is the quantity of stone along the shores of the lake available for civic or other purposes for Winnipeg. These deposits are found particularly at Big Limestone Point and Bull's Head. The expense of bringing the stone in barges would, it is suggested, be inconsiderable. Blocks are found which are 12 and 15 feet square, composed of layers of quartz which are three inches thick, so that they could be very conveniently used as flags for paving purposes.

The enforcement of the game laws is another subject which naturally receives attention from travelers in the north. The game law, Mr. Semmens says, have been enforced for the first time on a large portion of Lake Winnipeg, particularly at Fisher River. Fines have been imposed on a number of persons who had moose meat and moose skins out of season. The Indians do not take kindly the enforcement of the law, because they regard themselves as having a right, according to treaty, to obtain their living from the forest and from the waters without any question; and so the enforcement of the law has been regarded as a hardship.

Mr. Semmens passed a number of surveyors on the lake who were heading for Norway House, whence they propose to run trial lines east and west. He says it seemed like the opening up of a new era in the history of Lake Winnipeg to think of a possible railway line connecting the far east and the waterways that pass that remote spot. The journey of the surveyors was most prosperous; the teams suffered nothing on the way and no mishap of any kind marred the success of their movement.

The Lumber Industry.

The lumber industry of Lake Winnipeg formed another important sub-

ject for reflection. A number of lumber shanties were passed by the agent. One of these is that of Capt. Robinson at Humbag Bay; others were at Grindstone Point and Grindstone. Throat River, Drake's camp; Hollow Water River, Capt. Robinson's. These are taking out from 50,000 to 80,000 logs. Capt. Robinson is erecting a mill at Humbag Bay, and there are mills at Bad Throat and Grindstone.

All this wonderful wealth has never been touched until recently, and the resources are still nearly unknown; we are only beginning to understand the value of the territory which will be realized when a railway comes to open it up. The ten dog trains referred to brought in over \$25,000 worth of furs; this is but one item illustrating the possibilities of the north for the production of wealth, and indicating what may be expected in the future.

A reporter of the Virden Advance paid a visit to Lenore lately, and was surprised at the growth of the place. The first house was built in Lenore about six months ago and now there are four large elevators, a railway station, and up-to-date general store and hardware store by Messrs. McLaren and Robinson, lumber yard owned by F. H. Ringwood, livery, feed and stable run by H. McKay and F. McKinnon, harness shop run by Harvey Tageri, a carpenter shop run by Thos. Good, also a blacksmith shop run by Thos. Good. Mr. Jeff Wilson has accepted the Massey-Harris agency and is building a new warehouse. W. Grose carries on a butcher shop.

WANTED—SEVERAL PERSONS OF character and good reputation in each state (one in this county required) to represent and advertise our established wealthy business house of solid financial standing. Salary \$2.00 weekly with expenses additional, all payable in cash each Wednesday direct from head office. Horse and carriage furnished when necessary. References. Enclose self-addressed envelope. Colonial Co., 23 Dearborn St., Chicago.

# Canada Furniture Manufacturers Limited

HEAD OFFICE: - TORONTO, CANADA



Sole Licensees in Canada for the

## Car Lot Orders for the West a Specialty

UNEQUALLED FACILITIES FOR ASSORTED ORDERS

Our resident Winnipeg representatives, Mr. D. McIntyre and Mr. F. Endress, will always be glad to give information to our friends and customers.

Please address all communications on the subject of Catalogues to the Head Office, Toronto.

# "Macey"

Sectional Bookcase

WE SELL ONLY TO THE TRADE

# Eureka Furniture Display Racks?

They save floor space and set off the goods.





# CARNEFAC STOCK FOOD

**PROF. SHAW'S OPINION:**

Read what Prof. Shaw, formerly of the Ontario Agricultural College, Guelph, Ont., and now Editor of the St. Paul Farmer, says of Carnefac Stock Food:

St. Paul, Minn., Dec. 10, 1902.

THIS IS TO CERTIFY that the ingredients used by Mr. W. G. Douglas, Winnipeg, Manitoba, in the manufacture of his Carnefac Stock Food has been submitted to me for my opinion regarding their value. I may say with reference to them that I am satisfied they are all healthful. If properly blended they should make a splendid tonic for live stock, more especially when the digestion is not in the best working order. They will act as an appetizer and will also tend to stimulate the digestion so that when fed to animals not in good condition of thrift the result should be to quickly improve their condition. I would suppose that this food would be especially helpful in feeding horses in preparing them for spring work, and in putting in tone the stomach of cattle, sheep and swine that have been pushed too hard in feeding. It should also render good service when fed to calves that are not prospering because of indigestion.

THOMAS SHAW.

W. C. MACDONALD, Actuary. J. K. MACDONALD, Managing Director.

## The Confederation Life Association

HEAD OFFICE  
TORONTO

There are no conditions as to residence, travel or occupation in the Unconditional Accumulative Policies issued by this Association. They guarantee Extended Insurance, Paid-up Policies and Cash Surrender values.

Manitoba, N. W. T. and B. C.—Winnipeg Office, 467 Main Street.  
CHARLES E. KERR, Sec.-Treasurer. DANIEL McDONALD, Manager.  
HENRY WORSLEY, City Agent.

Brandon Office . . . . . F. W. GILL, Cashier.

### LEADING COMMERCIAL HOTELS

RED DEER, ALTA.  
**ALBERTA HOTEL.**  
BEATTY & BRINDLE, Props.  
C and E dining hall, good sample rooms and every accommodation for commercial travellers and the general public.

EDMONTON  
**ALBERTA HOTEL.**  
JACKSON & GRIERSON, Props.  
Sample rooms. Free bus. Livery in connection.

KAMLOOPS, B. C.  
**GRAND PACIFIC HOTEL.**  
P. A. BARNHART, Proprietor.  
The best hotel in Kamloops. Ample accommodation.

### T & B PLUG AND CUT TOBACCO

Try the new fours. They are giving entire satisfaction. Pays the retailer a handsome profit.

THE GEO. E. TUCKETT & SON CO., LTD  
HAMILTON.  
TEDS & PEBBLES, Agents, Winnipeg.

**A. CARRUTHERS & CO.**  
Dealers and Exporters of  
**Hides, Wool, Sheepskins,**  
TALLOW, SENECA ROOT  
AND RAW FURS  
Liberal advances made on shipments against bill lading; wool sacks, hide ropes and tugs furnished on application.  
Office and Warehouse:  
120-122 King St., Winnipeg, Man.

# IMPERIAL



**CREAM TARTAR**

# BAKING POWDER

**PUREST, STRONGEST, BEST.**  
Contains no Alum, Ammonia, Lime, Phosphates, or any injurious.

E. W. GILLETT & COMPANY LIMITED Toronto, Ont.

**LEITCH BROS.**

**Oak Lake**

"Anchor Brand" **Flours**

FROM NO. 1 HARD WHEAT.

**Bran, Shorts and all kinds of Chopped Feed and Grain.**

ADDRESS  
**OAK LAKE, MAN.**

## Ontario, Manitoba & Western Land Company, Ltd.

Incorporated under Manitoba Companies' Joint Stock Companies Act.

HON. COLIN H. CAMPBELL, Attorney-General Manitoba, President.  
HON. E. J. DAVIS, Commissioner Crown Lands, Ontario, Vice-President.  
BOARD OF DIRECTORS, WINNIPEG—D. R. Dingwall, President of D. R. Dingwall Co., Ltd., Jewellers and Manufacturers; J. Y. Griffin, President of J. Griffin Co., Pork Packers, Produce Co. Mar.; Theo. A. Burrows, M.P.P., Land Commissioner C. N. R. R.; Jas. W. Bettes, Manager and Sec.-Treas. Ontario, Manitoba and Western Land Co.  
ONTARIO—Major John A. McGillivray, K. C. S.S. I.O.F.; Charles C. Van Norman, President Harvey Van Norman Co., Manufacturers; Frank Denton, K.C., D. C.L., of Denton, Dunn & Boulibet, Barristers, Toronto.

Authorized capital, \$150,000, of which \$50,000 will remain in treasury; about \$20,000 still unissued, which we now offer at par, 100 shares, 20 per cent on allotment and 20 per cent every three months as called. The purpose of the company is to buy and sell carefully selected lands and city property on commission, collect rents and do a general finance and commission business. We will be glad to receive your commission and promise prompt and efficient service at reasonable rates. We have several thousand acres of land under offer and consideration of the executive board, as well as several thousand acres of first class land for sale on commission at reasonable prices. It will pay intending purchasers to call at 611 Main St., two doors north of Post Office, in office at one time occupied by Archibald & Howell.  
Phone 292.

JAMES W. BETTES, P. O. Box 612, Winnipeg.

ARE YOU STOCKED WITH

# GIN PILLS

We are Creating the Demand.  
Be Ready for It.

**FOR THE KIDNEYS ?**

**THE BOLE DRUG CO.**  
WINNIPEG, MAN.



J. MAY & CO.  
Manufacturers tents, awnings, mattresses, flags, wagon and horse covers, etc. 154 James street, Winnipeg.

**THE Angle Lamp**

Produces a brilliant light, superior for stores, hotels, factories, halls, etc. All the disadvantages accompanying the use of coal oil done away with. Write the Hilton Gibson Co., 214 Pacific avenue, Winnipeg, P. O. Box 291, Phone 982.

**BROOMS**

Write us for a sample order, say, Six Dozen. We will Pre-Pay same.

**E. H. BRIGGS & CO.**  
Broom Manufacturers.  
312 to 320 McDermott Ave.  
Telephone 1554. WINNIPEG, MAN.

**WM. FERGUSON**  
WHOLESALE  
**Wines, Liquors and Cigars**  
814 STREET, BRANDON

**HICKS BROS. & Co.**  
**TEA IMPORTERS**  
And wholesale dealers in  
Fancy Groceries, Butter, Eggs, Chices  
Packers of Britannia, Beaver and Buffalo Brands of Packet Teas, and sole Agents for The Lipton's Package Teas for Manitoba, N. W. Territories and British Columbia.  
277 Rupert Street.  
274 Pacific Avenue, Winnipeg

**The Best Union Made Overall in the West**

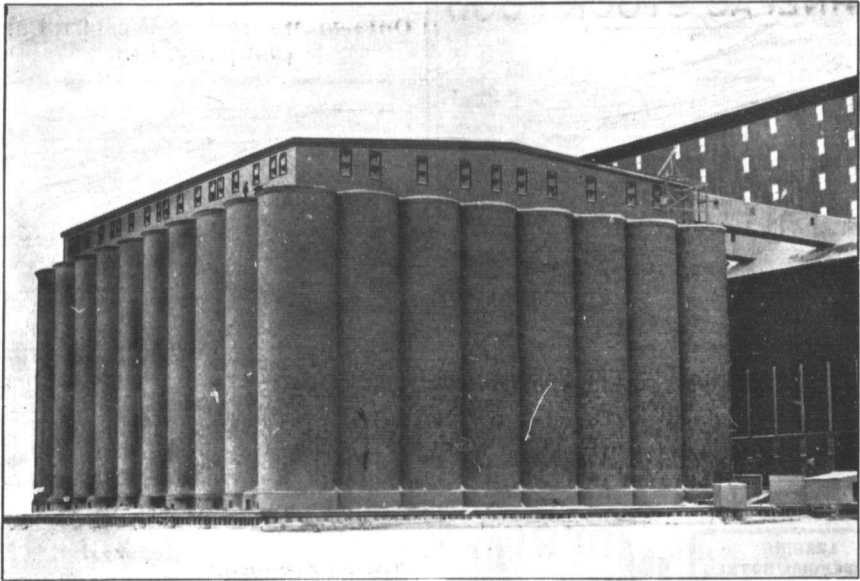
Mail orders promptly attended to.

**THE WINNIPEG SHIRT AND OVERALL MFG. CO.**  
Corner Main and James Streets  
WINNIPEG.

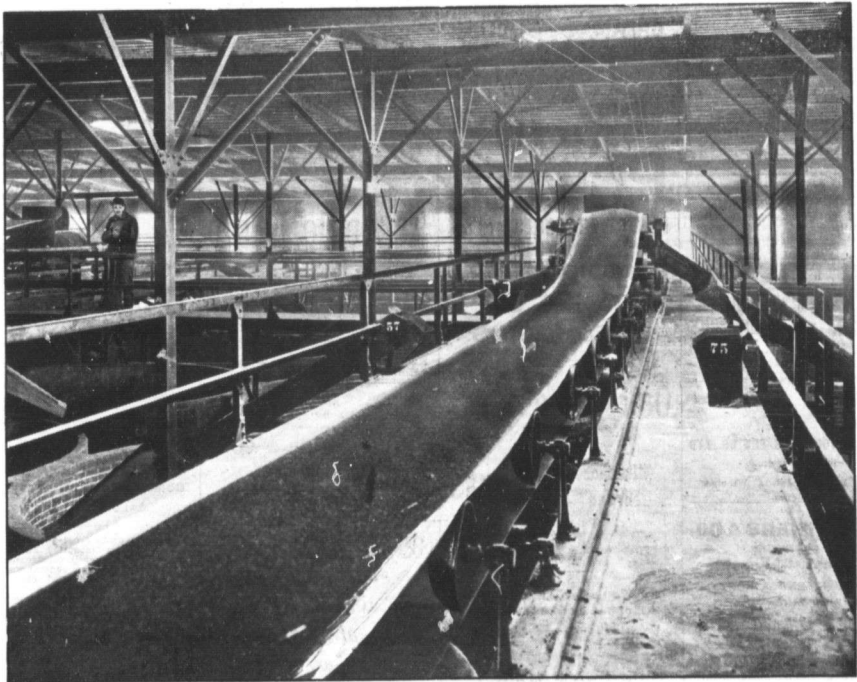
**ELLIS & GROGAN**  
**WAREHOUSEMEN**  
**COMMISSION AGENTS, ETC.**  
CALGARY, ALBERTA.

We have made large additions to our warehouse accommodation, and are prepared to buy or sell consignments on commission, and do a general warehouse business. Cars distributed, etc.

Mr. Stearns, of the Dominion Tobacco Co., Montreal, was in Winnipeg this week in the interest of his company, which he reports as doing a largely increasing business in the west. He will make a general tour of western Canada.



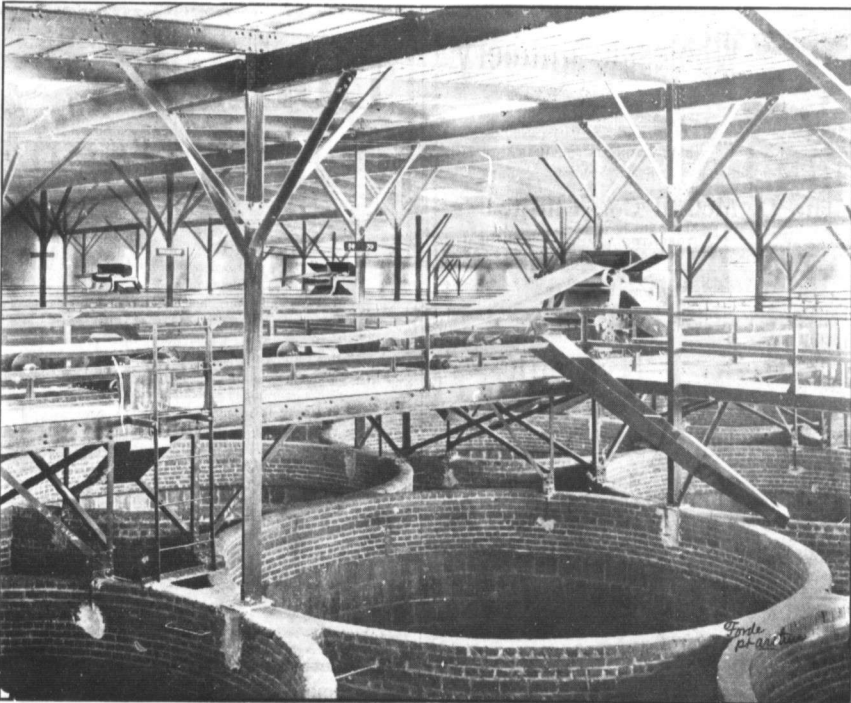
The New Canadian Northern Tile Grain Storage Tanks at Port Arthur, Capacity 2,220,000 Bushels.



Mammoth Belt Carrying Wheat to the Tanks in Tile Grain Storage Plant. The Superstructure Above the Tanks is Built of Steel and Tile, With Gravel Roof.

C.  
 Last w  
 some view  
 Railway's  
 Arthur. L  
 give some  
 grain stor  
 plant of t  
 machinery  
 from the  
 wooden st  
 The wood  
 \$125,000,  
 100,000 bu  
 bushels -  
 grain is c  
 operated  
 liquid int  
 sired to p

An A  
 An upp  
 has recent  
 lica of man  
 The C. C  
 Australia  
 Mem is to  
 of pumping  
 a day for  
 the Hoven  
 been succe  
 vers by m  
 the Mand  
 construct  
 twenty mi  
 four, appa  
 railboos. 7  
 lary cover  
 along the  
 which run  
 the sold t  
 mile of ca  
 route. 7  
 M'road th  
 tance. Th  
 make swif  
 neighbors.  
 trams will  
 Alps in a  
 under the



Top Interior of Tile Grain Storage Tanks, at Port Arthur, Showing Mode of Carrying Wheat on Belts to the Tanks.

#### C. N. R. ELEVATORS.

Last week The Commercial gave some views of the Canadian Northern Railway's grain storage plant at Port Arthur, Lake Superior. This week we give some further views. The tile grain storage tanks make the only plant of this nature in Canada. The machinery for elevating the grain from the cars, is contained in the wooden elevator adjoining the tanks. The wooden elevator has a capacity of 112,000 and the tank plant, 2,220,000 bushels, or a total of 3,332,000 bushels. The cuts show how the grain is carried on immense belts, operated above the tanks, and distributed into any tanks where it is desired to place it.

#### An Australian Water Scheme.

An unparalleled engineering feat has recently been achieved in Australia of immense value to the gold fields. The dogleg water scheme is to Australia what the famous Assuan dam is to Egypt. The remarkable feat of pumping 6,000,000 gallons of water a day for a distance of 50 miles, from the Helena river to Kalgoolie, has been accomplished by English engineers by means of a great dam, called the Mandarling weir, ninety feet high, situated across the Helena river twenty miles from Perth. The reservoir capacity is about 5,000,000,000 gallons. There are a number of auxiliary reservoirs and pumping stations along the 20-inch steel water main which runs along the railroad line to the gold fields—the "richest square mile of earth on the globe"—near Kalgoolie. The only foreign enterprise of equal importance is the Simpson line, the great burrow, which will link Switzerland and Italy next door neighbors. In a short time Pullman trains will pass through the Simpson Alps in a few minutes, 7,000 feet under the snow-covered diligence road

which Napoleon Bonaparte built a hundred years ago, and which takes about ten hours to traverse in favorable weather. This tremendous rat-hole, which passes under Lake Avino, will cost the Jura-Simpson railroad over \$15,000,000.—Collier's Weekly.

#### Buy's Railway.

Halifax, N. S., March 28.—A bill was introduced in the House of Assembly to-day authorizing the sale of the Nova Scotia Central Railway, 72 miles long, running from Middleton to Bridgewater, to the Halifax and Southwestern Railway Company, to the Mackenzie and Mann syndicate. The purchase price is \$25,000. The government will issue \$125,000 provincial debentures to the Halifax Banking Co., the present owners of the Nova Scotia Central, to be secured by a first mortgage. Mackenzie and Mann will advance the balance, \$100,000, taking a second mortgage as security.

The Nova Scotia Central is now in operation, and earnings are increasing rapidly. The Central also owns 15,000 acres of valuable timber limits. By virtue of this transaction Mackenzie and Mann will be able to utilize as part of their Halifax and Yarmouth line a section of the Central, thirteen miles long between Mahone Bay and Bridgewater, and the provincial government will save subsidies on that distance, amounting to \$130,000. The deal will consolidate the Mackenzie and Mann system in this province.

#### Canada's Exports.

Canada produces one bushel of wheat to thirty bushels grown elsewhere in the world. Notwithstanding this fact, Canada is by far the largest exporter of agricultural implements in the world, her population being taken into consideration. During the past seven

years the exports of Canadian implements have reached the vast total of ten millions of dollars, or equal to the export of twenty million bushels of wheat grown in the great Northwest at fifty cents per bushel. These facts should certainly establish in the minds of all thinking farmers the excellent quality and the high reputation which appertain to Canadian-made implements. Canadian implements are exported to every country in the world where grain is grown, except the United States. That market is a sealed book to Canadian implement manufacturers as well as to the Canadian farmer, for hardly any of his products find a market there, while the aggressive American is competing all over the world and Canada, too, for every inch of ground now held by the Canadian farmer and manufacturer.

Don't you think it would be to your own advantage, as well as to the advantage of Canada as a nation, that articles should be grown and made at home that are consumed by the Canadian people? Think the matter over, and see whether it is not your duty to work for this end.

#### Bank Returns.

The Canadian bank returns for February show the usual changes. Circulation is \$700,000 odd greater than it was in January, and is \$4,300,000 in excess of what it was a year ago, reflecting the larger volume of trade now moving. The banks have also increased their loans and discounts \$2,000,000 during February, and this item is \$39,000,000 greater than it was a year ago, another sign of the expansion in commerce. Call loans on stock collateral in Canada, were reduced during February, over one and a half million dollars; but are \$12,000,000 greater than they were a year ago.

In the States the Canadian banks cut down this item from \$500,000 during the month, while compared with a year ago it shows a slight increase. Deposits continue to accumulate, and the banks have increased their holdings of railway securities about \$2,000,000, compared with a year ago.

British consols have sold down to the lowest point in many years this week. On Wednesday the low rate of 99 was touched. This decline is due to a change in the rate of interest.

More than fifty girls are studying scientific farming in the Minnesota College of Agriculture. The course they take includes botany, chemistry, physics and geology, requiring in the first two years two terms of each. They pay special attention to cooking, laundering, household economy, furnishing houses and social culture. They learn to plan buildings and to lay out grounds. By this means it is hoped that farmers can be provided with wives who will know enough about making life in the country attractive to keep the boys from emigrating to the towns and cities.

The summer service of the Canadian Pacific in the west is likely to be just the same as last year so far as the Imperial Limited train is concerned. The train will be put on June 7 from Montreal and on June 12 at Vancouver. The first Imperial Limited will reach Winnipeg on June 9, going west, and June 15, going east. The schedule will be the same as last year, the Imperial Limited being tri-weekly, arriving from the east on Tuesday, Friday and Sunday and from the west on Monday, Thursday and Saturday. The eastbound train will reach Winnipeg at 9:20 p. m., and leave at 9:50, and the westbound will arrive at 6:15 a. m., and leave at 7 a. m.



## Wholesale Millinery

RIBBONS—Staple and fancy, large variety. Lowest prices.

LACES—New stock in all correct makes and shades. Values right.

"EVERYTHING IN MILLINERY."

Send a Trial Order.

The D. McCall Co., Limited

54 and 56 Albert Street, Winnipeg. TORONTO. MONTREAL. OTTAWA.

The BICYCLES with the



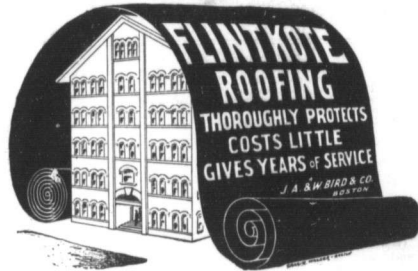
### Hygienic Cushion Frame

Have all the others beaten to a standstill. The public know t'is and that is why we are selling so many of them. They make all roads smooth roads. To be had only on Perfects, Brantfords, Massey-Harris and Clevelanda. Write for catalogues and particulars. Agents wanted everywhere.

Our Accessory Department is the most complete in the Northwest.

CANADA CYCLE AND MOTOR CO., Ltd.

144 Princess St., Winnipeg. Bicycles and Motor Vehicles.



CONTAINS NO TAR.  
NEEDS NO PAINTING.  
EVERYTHING YOU NEED PACKED  
INSIDE THE ROLL.

Join the great "Flintkote Family" by  
Getting Your Order in Quick to

**MACKENZIE BROS.**

WINNIPEG.

"THE FLINTKOTE FOLKS."

# Don't be ...Hasty



Don't place your orders for Fall Underwear until you have seen our samples.

Newest trimmings and qualities in Women's, Children's and Infant's Perfect Fitting Ribbed Vests, Drawers, Union Suits, Black Tights, etc. Men's Full Fashioned Shirts and Drawers in heavy "Winter Weights" and for "Spring." Our India Gauze guaranteed absolutely unshrinkable and all fine wool, stamped "CEETEE."

All our Fall Fashioned goods

have this tab sewn on  
Our Travellers are now on the road with complete range of samples.

WARRANTED  
TURNBULL'S

## The C. Turnbull Co. Limited

J. M. COOMBS,  
Winnipeg.

JOS. W. MAY,  
6 Bastion Square, Victoria, B. C.

## The Great West Permanent Loan & Savings Co.

Incorporated.

Head Office: Y. M. C. A. Building, Winnipeg, Man.

AUTHORIZED CAPITAL..... \$7,500,000

Permanent Preference Stock, par value one hundred dollars per share, is now selling at a Premium of 10 per cent. This stock bears 5 per cent per annum, paid half-yearly. The holders of this stock shall receive in addition to the said 5 per cent the entire profits of the Company. This stock may be paid for in full at time of application, or 15 per cent on application and the balance in payments to suit purchasers.

\$300,000 of this Stock has been sold during the past few weeks. This is a rare opportunity to secure Preference Stock in a western loan company.

This stock is unsurpassed as an investment, and the directors would strongly advise intending investors to secure this stock at once, as there is but a limited amount of this stock left.

Money to Loan on Easy Terms. For further particulars apply to

W. T. ALEXANDER, Manager.

274 Portage Ave., Winnipeg.

Phone 1835. P. O. Box 172.

The Canadian Northern Railway land department have issued a new folder, giving information regarding the company's lands in Manitoba, Assiniboia and Saskatchewan territories, and also miscellaneous information of interest to intending settlers. A map of Manitoba and the Territories showing all railway lines in the region, is given in the folder.

It is learned on good authority that when the National Association of Manufacturers of the United States meets in annual convention in New Orleans next month, a plan will be proposed for welding all the leading manufacturers of the United States into one formidable organization in order that they may more effectively act together in common defense against the demands and encroachments of trade unionism.

The secretary of agriculture in his recent report tells us something of the magnitude of United States agriculture. In 1940 the fixed capital invested in farming in its various branches was \$20,000,000,000, or four times that

invested in manufactures. There are 3,470,000 farms in the country, covering 841,000,000 acres, 415,000,000 of which were improved farms. About 40,000,000, or more than half the total population of the country, lived on farms. Of 20,000,000 reported as engaged in gainful occupations, 10,000,000 were employed in agricultural pursuits. The total value of agricultural products in 1939 was \$5,000,000,000. The most valuable crops were corn, \$228,000,000; then hay, \$45,000,000; cotton, \$224,000,000; oats, \$21,000,000. Animals sold and slaughtered, \$900,000,000; dairy products, \$12,000,000; poultry and eggs, \$2,100,000,000.

WANTED—SEVERAL PERSONS of character and good reputation to assist in the state (done in this county required) represent and advertise old est. business. Salary \$100 weekly with expenses additional. All parties to meet each Wednesday direct from head office. Horse and carriage furnished when necessary. References. Business set dressed envelope. Colonial Co., 251 Deborn St., Chicago.

CANADIAN  
PACIFICEASTER  
HOLIDAY  
RATESFare and  
One-Third  
for Round Trip

Tickets on Sale

April 9 to 12

INCLUSIVE

Good to return up to and  
including April 14thFull information given on  
application at City Ticket Office,  
Corner Main and McDermott Sts.,  
at Winnipeg Depot, or to

C. E. McPHERSON.

General Passenger Agent.  
WINNIPEG.W. BRODIE,  
Asst. Gen. Pass. Agent.

## Canadian Grocers' Combine.

Toronto, April 1.—A combination of grocers was formed here to-night at the Queen's hotel, which will include many of the leading wholesale grocers of the Dominion, excluding Quebec. The organization will be known as the "Canada Grocers, Limited." The promoters say there is no intention of interfering with the individuality of the firms entering the combine or with their travellers, the chief aim being to unite in purchasing and by combining orders to secure reduced prices. The deal office will be in Toronto, and new branches will be opened through new parts of Manitoba and the Territories.

N. M. & F. Lettes, of Chicago, have been the principal part in organizing the combine. H. C. Bell, of Hamilton, was the active organizer. Among those attending to-night's meeting were Colonel Davidson and Mr. Blain, of the Bay, Blain Co.



Office: 391 Main St. Tel. 464.

THROUGH  
TICKETS  
TO ALL POINTS  
EAST  
WEST  
SOUTHCalifornia and Florida Winter Resort.  
Also to European Points.  
Australia, China and Japan.Pullman Sleepers.  
All Equipment First Class.For further information apply to  
H. SWINFORD, General Agent, 391 Main  
Street, Winnipeg; or  
CHAS. S. FEEB, General Passenger and  
Traffic Manager, St. Paul, Minn.

## Rosenroll, Alberta.

A correspondent at Rosenroll sends us the following information about that place:

A post office has recently been established on the new swanote of Rosenroll, situated half way between Bittern Lake and Battle river about 14 miles east of Wetaskiwin. The village of Rosenroll is centrally located in a prosperous farming, dairying, and stock raising district, which is well wooded and watered with lakes, running streams and natural springs. The hotel accommodation is first class. The stage leaves Wetaskiwin for Rosenroll every Monday and Wednesday at 10.15 a. m., returning the following days. Telephone communication with Wetaskiwin and other points will soon be established. Directors: R. B. Barnard, general store; J. D. Cowan, stage proprietor; A. W. Haslewood, miller; Geo. H. Keeble, general store and postmaster; Rosenroll hotel, A. H. Barnard, proprietor.

## Hall Insurance.

Wawanesa, March 20.—The shareholders of the Western Canadian Hall Insurance Co. held their adjourned annual meeting on Friday at their head office here. The representation of eighty per cent. of the subscribed capital of the company manifested the interest taken in its affairs by the shareholders. The report of the previous year's business submitted by the directors showed a large surplus after a dividend of eight per cent. had been declared. The following were elected directors for the ensuing year: Dr. C. M. Vanstone, R. J. Neithercot, Alex. Blain, T. S. Matheson, E. E. Roberts, F. O. Fowler, M. P. P., and Angus McDonald, reeve of Oakland. Following the meeting of the shareholders the directors met and appointed the officers, viz.: Dr. Vanstone, president; T. S. Matheson, 1st vice-president; A. McDonald, 2nd vice-president; R. J. Neithercot, secretary, and Alex. Blain, general agent.

## Winnipeg Customs Collections.

The customs receipts at the Winnipeg office for last month were \$155,978.97, and for March, 1902, \$184,250.77, a decrease of \$28,271.80 for this year.

While there is a decrease in the total receipts, there is a large increase in ordinary business. For March, 1902, as compared with the same month of last year. In March, 1902, there was an extraordinary item of \$81,743.35 recorded for one day's receipts. This was largely made up of duties paid on an extraordinary item of \$81,743.35. If \$3,749 is allowed as an ordinary day's receipts, and the extra \$80,000 deducted from the amount of duties collected in March of last year, the increase for this year would be over \$50,000.

"Particular Palates"

are always PLEASSED with a

"T.L." CIGAR

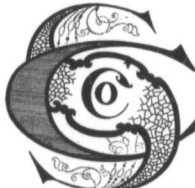
A PERFECT  
TRIED-BY-TIME  
HAVANA CIGARBuilt to do business,  
and doing it daily at all  
good cigar stands.

Look for name on Every Cigar

Western Cigar Factory

THOS. LEE, Prop.

WINNIPEG.

For Easter  
Decoration

We have just received a shipment of elegant Artificial Flowers, each one potted and banded with moss; the stock includes Roses, Camellias, Lillies, Chrysanthemums, Gladioli, Narcissus, Brazilian Tulips, Tulips, Palms, etc.

## THE CONSOLIDATED STATIONERY CO. Limited

WINNIPEG

244 McDermott Ave.

## Canadian Flour at Osaka.

Tokio, March 20, via Victoria, B. C., April 1.—The Osaka exhibition is being rapidly set in order for the grand formal opening by the emperor on the 10th of April. The local papers already contain columns of reports of the special exhibits, and much praise is devoted to those from the United States and Canada.

The latter country has a special building of its own, and is making a special bid for Japanese trade. Hon. Sydney Fisher, Dominion minister of agriculture, is here in connection with his country's exhibit, and is being much feted. A speciality is made of Canadian flour, a real live baker from Canada being engaged to make bread from Canadian flour before the eyes of the visitors.

"Pardon me," said the police man in the cheap restaurant, "but I don't like anything sweet in my coffee."

## Labor Notes.

The tinmiths and sheet metal workers of Winnipeg formed themselves into a union last week.

In the Winnipeg police court this week one of the C. P. R. employees who went on strike with the freight hands was fined for deserting his employment. The man was hired by the month. The action was brought under the Masters' and Servants' Act. Other similar cases are pending.

There is a scarcity of labor in Vancouver among iron workers, boiler-makers, machinists, pattern-makers and moulders. This is due to the very large demand for this class of work for which the local supply of labor is not sufficient. Loggers are also very scarce in the B. C. camps, and it is estimated that fully 1,000 more could find employment.

Baseball  
Lacrosse  
Lawn Tennis  
Football  
Cricket

## SPORTING GOODS

We are carrying a very complete line this year.  
Write for Catalogue.

**CLARK BROTHERS & CO.**  
Wholesale Stationers

P.O. Box 1240.

WINNIPEG, MAN.

**The W. H. Malkin Co.**  
LIMITED.

**Importers and  
Wholesale Grocers**

Packers of the Celebrated  
**VICTORIA CROSS** Evaporated  
Fruits, Teas and Coffees.  
**HEADQUARTERS** for Sago, Tapioca,  
Rice and all classes of English  
Groceries.

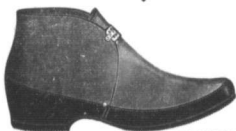
Prompt attention to all letter orders.

137 Water St., - VANCOUVER, B.C.

Wholesale...

**ARTHUR CONGDON**

**Boots, Shoes AND Rubbers**



Sorting orders for Spring Boots, Shoes and Rubbers will have prompt attention, and quick shipment. Large stock of the leading staple lines constantly on hand, ready for immediate demands.  
Full orders for "Maltese Cross" Rubbers are coming in freely, and "Boston" stock is being rapidly sold out. There's money for you in trying these goods.

**ARTHUR CONGDON**

PRINCESS ST.  
WINNIPEG.



**John L. Waller & Co.**

Successors to Sterling & Waller

**Wholesale  
Men's Furnishings**

Our travelers are on the road with a full line of samples for sale.

It will be to your interest to see the values we offer in Caps, Heavy Shirts, Waterproof, Leather and Sheepskin Coats.

214-218 Princess Street.  
WINNIPEG.

**SADLER & HAWORTH**  
Tanners and Manufacturers of and  
Dealers in

**OAK LEATHER, AND RUBBER AND  
GANDY BELTING**  
Montreal and Toronto.

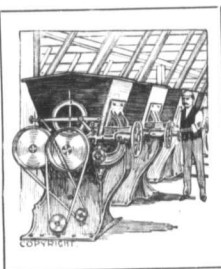
A. P. MACDONALD, Sales Agent,  
Western Canada Block, Winnipeg.

CITY BOX FACTORY.

**Czorwinski & Grant**

Manufacturers of all kinds of boxes, crates, butter and egg cases and the Lock corner and printed boxes.

93 AND 95 LOMBARD STREET  
WINNIPEG.



**We are not  
Satisfied**

neither are you—with old fashioned methods of making anything; we are on the move. The FLOUR and the ROLLED OATS we turn out are the result of absolutely the best methods and approved appliances of which we can learn.

**Ogilvie's Hungarian Flour AND Ogilvie Oats**

ARE THE VERY FINEST PRODUCTS TO BE HAD.

**UPTON'S** PURE  
FRUIT

**JAMS, JELLIES  
AND ORANGE MARMALADE**

Our New Season ORANGE MARMALADE is very fine. ASK FOR IT.

**TEES & PERSE  
AGENTS  
WINNIPEG**