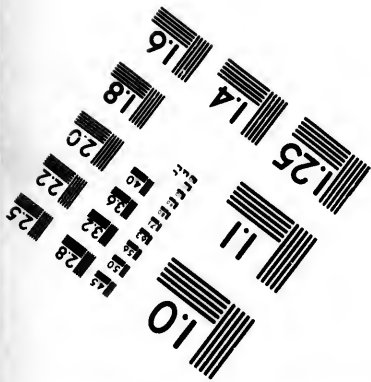
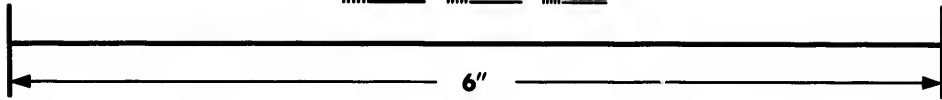
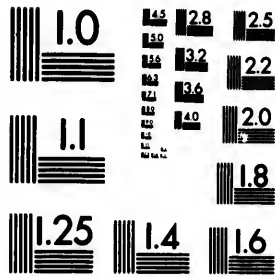


**IMAGE EVALUATION
TEST TARGET (MT-3)**



**Photographic
Sciences
Corporation**

23 WEST MAIN STREET
WEBSTER, N.Y. 14580
(716) 872-4503

28
25
22
20
18

**CIHM/ICMH
Microfiche
Series.**

**CIHM/ICMH
Collection de
microfiches.**



Canadian Institute for Historical Microproductions / Institut canadien de microreproductions historiques

10
01

© 1987

Technical and Bibliographic Notes/Notes techniques et bibliographiques

The Institute has attempted to obtain the best original copy available for filming. Features of this copy which may be bibliographically unique, which may alter any of the images in the reproduction, or which may significantly change the usual method of filming, are checked below.

L'Institut a microfilmé le meilleur exemplaire qu'il lui a été possible de se procurer. Les détails de cet exemplaire qui sont peut-être uniques du point de vue bibliographique, qui peuvent modifier une image reproduite, ou qui peuvent exiger une modification dans la méthode normale de filmage sont indiqués ci-dessous.

- | | |
|--|--|
| <input type="checkbox"/> Coloured covers/
Couverture de couleur | <input type="checkbox"/> Coloured pages/
Pages de couleur |
| <input type="checkbox"/> Covers damaged/
Couverture endommagée | <input checked="" type="checkbox"/> Pages damaged/
Pages endommagées |
| <input type="checkbox"/> Covers restored and/or laminated/
Couverture restaurée et/ou pelliculée | <input type="checkbox"/> Pages restored and/or laminated/
Pages restaurées et/ou pelliculées |
| <input type="checkbox"/> Cover title missing/
Le titre de couverture manque | <input checked="" type="checkbox"/> Pages discoloured, stained or foxed/
Pages décolorées, tachetées ou piquées |
| <input type="checkbox"/> Coloured maps/
Cartes géographiques en couleur | <input type="checkbox"/> Pages detached/
Pages détachées |
| <input type="checkbox"/> Coloured ink (i.e. other than blue or black)/
Encre de couleur (i.e. autre que bleue ou noire) | <input checked="" type="checkbox"/> Showthrough/
Transparence |
| <input type="checkbox"/> Coloured plates and/or illustrations/
Planches et/ou illustrations en couleur | <input type="checkbox"/> Quality of print varies/
Qualité inégale de l'impression |
| <input type="checkbox"/> Bound with other material/
Relié avec d'autres documents | <input type="checkbox"/> Includes supplementary material/
Comprend du matériel supplémentaire |
| <input type="checkbox"/> Tight binding may cause shadows or distortion
along interior margin/
La reliure serrée peut causer de l'ombre ou de la
distorsion le long de la marge intérieure | <input type="checkbox"/> Only edition available/
Seule édition disponible |
| <input type="checkbox"/> Blank leaves added during restoration may
appear within the text. Whenever possible, these
have been omitted from filming/
Il se peut que certaines pages blanches ajoutées
lors d'une restauration apparaissent dans le texte,
mais, lorsque cela était possible, ces pages n'ont
pas été filmées. | <input type="checkbox"/> Pages wholly or partially obscured by errata
slips, tissues, etc., have been refilmed to
ensure the best possible image/
Les pages totalement ou partiellement
obscurcies par un feuillet d'errata, une pelure,
etc., ont été filmées à nouveau de façon à
obtenir la meilleure image possible. |
| <input type="checkbox"/> Additional comments:/
Commentaires supplémentaires: | |

This item is filmed at the reduction ratio checked below/
Ce document est filmé au taux de réduction indiqué ci-dessous.

10X	14X	18X	22X	26X	30X
<input type="checkbox"/>	<input type="checkbox"/>	<input type="checkbox"/>	<input checked="" type="checkbox"/>	<input type="checkbox"/>	<input type="checkbox"/>
12X	16X	20X	24X	28X	32X

The copy filmed here has been reproduced thanks to the generosity of:

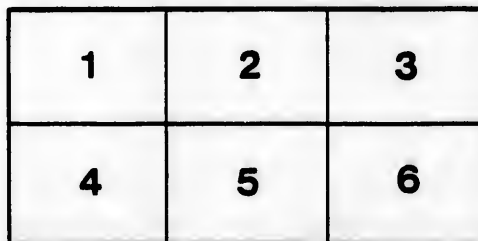
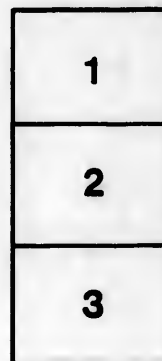
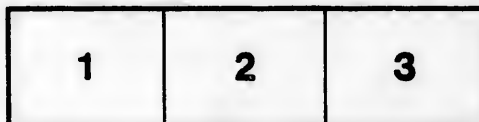
D. B. Weldon Library
University of Western Ontario
(Regional History Room)

The images appearing here are the best quality possible considering the condition and legibility of the original copy and in keeping with the filming contract specifications.

Original copies in printed paper covers are filmed beginning with the front cover and ending on the last page with a printed or illustrated impression, or the back cover when appropriate. All other original copies are filmed beginning on the first page with a printed or illustrated impression, and ending on the last page with a printed or illustrated impression.

The last recorded frame on each microfiche shall contain the symbol \rightarrow (meaning "CONTINUED"), or the symbol ∇ (meaning "END"), whichever applies.

Maps, plates, charts, etc., may be filmed at different reduction ratios. Those too large to be entirely included in one exposure are filmed beginning in the upper left hand corner, left to right and top to bottom, as many frames as required. The following diagrams illustrate the method:



L'exemplaire filmé fut reproduit grâce à la générosité de:

D. B. Weldon Library
University of Western Ontario
(Regional History Room)

Les images suivantes ont été reproduites avec le plus grand soin, compte tenu de la condition et de la netteté de l'exemplaire filmé, et en conformité avec les conditions du contrat de filmage.

Les exemplaires originaux dont la couverture en papier est imprimée sont filmés en commençant par le premier plat et en terminant soit par la dernière page qui comporte une empreinte d'impression ou d'illustration, soit par le second plat, selon le cas. Tous les autres exemplaires originaux sont filmés en commençant par la première page qui comporte une empreinte d'impression ou d'illustration et en terminant par la dernière page qui comporte une telle empreinte.

Un des symboles suivants apparaîtra sur la dernière image de chaque microfiche, selon le cas: le symbole \rightarrow signifie "A SUIVRE", le symbole ∇ signifie "FIN".

Les cartes, planches, tableaux, etc., peuvent être filmés à des taux de réduction différents. Lorsque le document est trop grand pour être reproduit en un seul cliché, il est filmé à partir de l'angle supérieur gauche, de gauche à droite, et de haut en bas, en prenant le nombre d'images nécessaire. Les diagrammes suivants illustrent la méthode.

ails
du
diffier
une
page

rata
)

elure,
à

32X

TOWNSHIP

—OF—

NORTH DORCHESTER

LIST OF VOTERS

FOR 1884.

VOTERS' LIST ACT.

SEC 2.—S.C.A. The Sheriff shall immediately upon receipt of his copies cause one of them to be posted up in a conspicuous place in the Court House; the Clerk of the Peace upon the receipt of his copies shall cause one of them to be posted in a conspicuous place in his office; every Public or Separate School Master or Mistress shall in like manner post up one of his or her copies on the door of the School House; and every Postmaster shall post up one of his copies in his Post Office.

London, Ont:

ADVERTISER PRINTING COMPANY, RICHMOND STREET.

1884.

ge [signature]

Voters' List, North Dorchester 1884.

SCHEDULE OF POST OFFICES.

1 Cramlin.	9 Putnam.	17 Belmont.
2 Dorchester Station.	10 Ingersoll.	18 Watford.
3 Thamesford.	11 Gladstone.	19 Petrolia.
4 London.	12 Verschoyle.	20 Pond Mill.
5 London East.	13 Crampton.	21 Copenhagen.
6 Nilestown.	14 Harrietsville.	22 Wilton Grove.
7 Evelyn.	15 Derwent.	23 Lyons.
8 Mosley.	16 Avon.	

Polling Sub-Division No. 1

Comprising Lots Nos. 1 to 9, both inclusive, in Concessions Nos. 1, 2, 3 and 4, North of the River Thames.

PART FIRST.

Persons entitled to vote at both Municipal Elections and Elections to the Legislative Assembly.

No. on Roll	Name.	Con.	Lot.	P.O.	No. on Roll	Name.	Con.	Lot.	P.O.
119 j	Alexander Jas. t.....	2	sw	1/8 2	118 j	Downey Wm, o.....	2	se	1/6 2
214	Aylsworth Henry R. o....	3	pt	5 2	242	Duon Thos J, o.....	4	p	9 2
215 j	Aylsworth Daniel P, o....	3	pt	5 2	243	Denison Thos, t.....	4	pt	9 2
	<i>Henry W</i>				248	Denham Oliver, t.....	4	pt	9 2
	Burtch t.....	3	sw	1/3 2	253	Duckworth Lawrence, o..	4	pt	9 2
10	Barnes Wm, t.....	1	pt	n pt 1 1		<i>Downey Patrick J. J. 2 2 1/2 2 2</i>			
12 j	Bartlett Wm, t.....	1	n pt	1 & 2 1	101	Elliot Jno, o.....	2	pt	1/9 2
14	Byres James, o.....	1	pt	s pt 1 1	120	English Thos, o.....	2	nw	1/5 1
34	Brookman George, oc....	1	s	1/6 1		<i>HO</i>			
108	Bell Jno, o.....	2	n	1/7 1	154 j	Ford J. J, o.....	3	w	1/7 2
109	Bell Henry, fs.....	2	n	1/7 1	237	Fifield Hiram, o.....	4	pt	9 2
111	Betts Geo, t.....	2	sw	1/6 2	257	Fereman Jno, t.....	4	pt	9 2
134	Blake Elias, o.....	3	sw	pt 1 6		<i>HO</i>			
155	Baker Francis, t.....	3	s	1/7 2	3	Hayward Wm, o.....	1	sub	17 & 18 1
212	Beverly David, o.....	3	sw	pt 6 2	7	Haylet Wm, o.....	1	pt	nw pt 1 1
213	Beverly Adelbert, o.....	3	sw	pt 6 2	38	Henderson Andrew, sr, o.	1	w	pt 9 1
234	Bennet Thos, o.....	4	pt	9 10	39 j	Henderson Andrew jr, fs	1	w	pt 9 1
235	Bryant Henry, o.....	4	pt	9 2	40	Henderson Samuel, fs..	1	w	pt 9 1
251	Beverly Jno, o.....	4	pt	9 2	142	Henry Anthony, o.....	2	s	1/3 6
252	Bone James, o.....	4	pt	9 2	156 j	Hunt Jno. W, t.....	3	n	1/8 2
					233	Hunter Charles, o.....	4	pt	9 2
110 j	Clegg Robt, o.....	2	sw	1/7 2					
123	Creighton James, o.....	2	s	1/4 1	33	Isaac Emanuel, o.....	1	n	1/6 1
124	Creighton Jno, fs.....	2	s	1/4 1	35	Isaac Charles W, o.....	1	n	1/6 1
125	Creighton Kennedy, fs..	2	s	1/4 1	113	Irwin Thos sr, o.....	2	n	1/5 1
127	Crocket James, o.....	2	sw	1/3 1	114 j	Irwin Thos jr, fs.....	2	n	1/5 1
130	Cornish Albert, o.....	2	s	1 1					
239	Chittick Gorge, o.....	4	pt	9 2					
6	Dreaney Robert, o.....	1	pt	n pt 1 1					
116	Dickie Robt, o.....	2	sw	1/5 2					
117 j	Dickie Jacob, o.....	2	se	1/5 2					

NORTH DORCHESTER VOTERS' LIST.

No. on Roll	Name.	Con.	Lot.	P.O.
115	Irwin Frederick, fs	2	n 5	1
11	Johnston Joseph, o	1	n pt 1 & 2	1
102	Joyce Henry, oc	3	pt 9	2
150 j	Kilborn Isaac, o	3	n w pt 5	6
151 j	Kilborn Walter, o	3	n w pt 5	6
	Modale James, o	3	s w pt 5	2
15 j	Mosop John, o	1	s 2	1
138	Marsh Wm, o	3	n e pt 1	6
139 j	Marsh Thos, t	3	s w pt 3	6
140 j	Marsh Joseph, t	3	s w pt 3	6
153 j	Mosop Wm, t	3	n e pt 6	2
216	Moore Samnel, W, o	4	pt 9	2

146 j	McIntyre Daniel, o	3	pt 3 & 4	6
147 j	McIntyre Jno, o	3	pt 3 & 4	6
209	McMillan Thos, o	4	pt 8	2
	<i>McNiven John</i>	4	pt 9	2
106 j	Nicol James, o	2	s 8	2
106 j	Nicol Andrew, fs	2	s 8	2

5 j	Olinstrum Carl, o	1	pt n w pt 1	8
100 j	Oliver Wm, o	2	n 9	2
126	Oliver Wm, o	2	n e 3	1
128 j	Oliver James, o	2	n pt 2	1
157	Oniel John, o	3	s w 8	18
217	Oniel Wm, H, o	4	pt 9	18
364	Odell Fred. A, o	3	pt 2	6
	<i>Oliver Samuel</i>	3	2	18 1/2
32	Parker Alex, o	1	s 6	1
33 j	Parker Jno, fs	1	s 6	1
121 j	Parker Edward A, o	2	n e 4	1
131	Parkinson Thos, o	2	n 1	4
136	Parkinson Samuel, o	3	s e pt 1	1
241	Patterson George, o	4	pt 9	2

102 j	Rogers James, o	2	pt s 9	2
144	Reynolds Henry, o	3	pt 2 & 3	6
158 j	Rogers Ephraim, o	3	s e 8	2
161 j	Robins Peter, o	3	e pt 9	2
247	Richmond Wm, o	4	pt 9	2

No. on Roll	Name.	Con.	Lot.	P.O.
1	Smith Thomas, o	1	n pts	1 1
2	Smith Charles, o	1	n pts	1 1
9	Short Charles, o	1	n pts	1 1
13	Stephenson George, o	1	pt s	1 1
21	Stothers Jas, o	1	n 4	1
22	Stothers Robert, o	1	n 4	1
25	Stothers Stephen, o	1	s 4	1
26	Stothers James, fs	1	s 4	1
27	Stothers Joseph, fs	1	s 4	1
132	Showler Jno, o	3	n w pt 1	1
133	Showler George, fs	3	n w pt 1	1
143	Swart Sawyer, o	3	pt 2 & 3	6
162	Slaght Abram, o	3	s w pt 1	9 2
201	Shaw Edward, t	3	pt 6 & 7	2
202	Shaw Lyman, t	3	pt 6 & 7	2
203 j	Shaw Richard, t	3	pt 6 & 7	2
204	Shaw Richard E, o	3	pt 6 & 7	2
205	Shaw Sidney, fs	3	pt 6 & 7	2
206	Shaw W H, t	3	pt 6 & 7	2
207	Swart Rossel, o	4	n w pt 8	2
208	Swart Bart, o	4	n w pt 8	2
249	Sage Chas, o	4	pt 9	19
250	Sage Jas, oc	4	pt 9	19

4 j	Taylor John, o	1	pt n w pt 1	1
41 j	Temple Wm, o	1	e pt 9	1

246	Vannatter Geo, o	4	pt 9	2
-----	------------------	---	------	---

8	Wilcox Geo, t	1	pt n w pt 1	1
16	Wood Daniel, o	1	n 3	1
17	Wood Richard o	1	n 3	1
18 j	Wood Jas, o	1	n 3	1
19	Weir John, o	1	n 3	1
20	Weir Wm J, fs	1	n 3	1
23	Weir Joseph C, o	1	n w 5	1
24	Weir Wm B, o	1	n e 5	1
28	Weir Sidney, fs	1	n e 5	1
29	Weir Joseph H, fs	1	n e 5	1
35	Wilson Robert, o	1	pt 7	1
36	Wilson David, o	1	pt 7	1
37	Weir Jas, o	1	pt 8	1
104	Weir Jas H, o	2	n e 8	1
105	Weir Adam, o	2	n w 8	1
112	Whittaker Geo, o	2	s e 7	2
122	Weir John, o	2	n w 3	1
129	Weir Wm, o	2	s pt 2	1
149	Wilson Wm, o	3	apt 3 & 4	2
152	Wilson Wm, o	3	s w pt 6	2
228 j	Wilson Wm E, o	4	pt 9	2
238 j	Wade Geo, o	4	pt 9	2
255	Williams Geo, o	4	pt 9	2

163 j	Young Abram, o	3	w 9	2
-------	----------------	---	-----	---

NORTH DORCHESTER VOTERS' LIST.

PART SECOND.

Persons entitled to vote at Municipal Elections only.

240	Crews Thos, o	4	pt 9 2	211	Shaw Mrs, o	4	pt 7 2
258	Lewis Mrs, t	4	pt 9 2	135	Thompson Miss, o	1	sw pt 1 1

PART THIRD.

Persons entitled to vote at Elections to the Legislative Assembly only.
None.

Polling Sub-Division No. 2

Comprising Lots Nos. 10 to 18, both inclusive, in Concessions Nos. 1, 2, 3, 4 and 5, North of the River Thames.

PART FIRST.

List of persons entitled to vote at both Municipal Elections and Elections to the Legislative Assembly.

No. on Roll	Name	Con.	Lot.	P.O.	No. on Roll	Name	Con.	Lot.	P.O.
258	Aylesworth D P, o	2	pt 10	2	80	Ensign Benjamin <i>Pepam</i>	2	nw pt 16	3
					190	Edwards Charles, o	4	s 18	10
					191	English Jno, o	4	s 17	10
75	Bevens Edwin, o	2	n e 17	3	52	Fitzsimmons Heatly, o	1	sw pt 13	4
171	Barker Esau, o	3	sw pt 12	2	61	Foster David, o	1	sw pt 15	3
199	Brown David t	4	w 14	2	62	Foster Robt, o	1	s e 15	3
218	Burdick I N, o	4	pt 10	2					
268	Burdick Albert, o	4	pt 10	2					
298	Buchanan Daniel, o	5	17	2					
299	Buchanan Leonard, f s	5	17	2					
47	Clipperton James, o	1	nw 11	7	267	Goodier Frederick, t	4	pt 10	2
223	Collins Wm, o	4	pt 10	2					
229	Cartwright Wm T, o	4	pt 10	2					
259	Chittick William, H, o	4	pt 10	2					
261	Croxon Henry, sr, t	4	pt 10	2	70	Humphrey Edward, o	1	n 18	3
262	Croxon Henry, jr, t	4	pt 10	2	71	Humphrey Wm, f s	1	n 18	3
265	Crow George, o	4	pt 10	2	77	Horseman Dennis, o	2	w 17	10
274	Cook James, o	4	pt 11	2	159	Hunt George, o	3	nw 10	2
292	Connor Charles, o	5	pt 15	2	160	Hunter Joseph, t	3	sw 10	2
294	Carrol Jno, o	5	pt 16	2	172	Hunter Paul, o	3	opt 12	2
295	Carrol Dennis, oc	5	pt 16	2	173	Hunter Henry, o	3	opt 12	2
296	Carrol Richard, oc	5	pt 16	2	230	Hayes Mathew, o	4	pt 10	2
					275	Hunter Thomas, o	4	n pt 11	2
					276	Hunter Francis, f s	4	n pt 11	2
92	Durand John, sr, o	2	s 12	2					
93	Durand Jno, jr, o	2	s 12	2					
167	Daw Thos, t	3	s 11	2					
198	Duffield Robt, o	4	s 14	2					
300	Dundas G, o	5	18	2	49	Isaac John, o	1	12	4
301	Dundas Edwin, o	5	18	2	287	Ingram Wm, o	5	pts 12, 13	2

Hand James *a pt 8 in V. 10*

NORTH DORCHESTER VOTERS' LIST.

No. on Roll	Name.	Con.	Let.	P.O.
84	Johnston Simon, o	2	e	13 3
165	Jackson Wm, o	3	s	11 6
179	Jamison Robt, o	3	s w	16 3
196	Johnston Adam, f s	4	n e	15 2
279	Johnston James, o	4	pt	11 2

53	Lucas Edward, t	1	s w	13 3
183	Leslie Bengsh, o	3	n e	18 3
192	Little Jno, o	4	n w	17 2
283	Lester Jno R, o	4	pt	11 2
293	Laughlin Barnard, o	5	n w pt	16 2

48	Moore Wm, o	1	e pt	11 1
51	Morrison David, o	1	n w	13 1
58	Morrison Jno, o	1	n	15 3
59	Morrison Wm, f s	1	n	15 3
60	Morrison Mathew, f s	1	n	15 3
86	Miller Joseph C, o	2	n	14 3
88	Mitchell Alex, o	2	n	12 2
89	Mitchell Jno, f s	2	n	12 2
94	Marr James, o	2	n	11 2
95	Marr Robt, o	2	n	11 2
96	Mitchell James, o	2	s	11 2
164	Mountain Jno H, o	3	n	11 2
295	Mutton Wm, oc	5	pt	12 2

Mathews Wm 3 4 pt 10 2
McKay Rembn 1. 02/18/24

57	McQueney Thos, o	1	n w	14 3
73	McMurray Samuel, o	2	n	18 3
81	McLeod Jno, o	2	s w	16 3
180	McFarlan Jno, o	3	w	17 3
181	McFarlan Robt, o	3	n e	17 3
194	McKay Donald, o	4	w pt	16 2
197	McKay Wm, o	4	w	15 2
225	McCann Ezekiel, o	4	pt	10 2
226	McCann Edward, o	4	pt	10 2

W. C. Clary Alex 3. 5 pt 14 2

76	Norworthy Josiah, o	2	s e	17 3
174	Neely Thos J, o	3	s	13 2
184	Neely Thos, o	3	s e	17 2
185	Neely Geo W, o	3	s e	17 2
193	Neely Robt, o	4	pt	16 2

78	Oniel Frank, t	2	w	17 3
99	Oliver Noble, oc	2	s	10 2
178	Ovens Thos, o	3	n e	16 3
180	Ovens Howard, o	3	s e	16 2
277	Ovens Thomas, o	4	pt	11 2
291	Orchard Jno, o	5	n pt	14 2

54	Patterson George, o	1	pts	12, 14 3
55	Patterson Thos, o	1	pt	13 3
56	Patterson Thos, o	1	s	14 3
63	Payne Wm, o	1	w	16 3

No. on Roll	Name.	Con.	Let.	P.O.
64	Payne Wm H, f s	1	w	16 3
227	Pearson Thos, t	4	pt	10 2

168	Robertson Alex, o	3	n	12 2
169	Robertson Jno, o	3	n	12 2
176	Rutledge Robt, o	3	s	14 2
196	Ross James, o	3	s e pt	18 3

69	Spice Thos, o	1	n	18 3
82	St. Clair Andrew, o	2	s e	16 3
83	St. Clair Andrew, o	2	s e	16 3
85	Staly Thos, t	2	w	15 3
188	Sutherland Robt, o	4	n	18 2
189	Sutherland Wm, f s	4	n	18 2
200	Shields James H, o	4		13 2
222	Stockdale George, t	4	pt	10 2
236	Scott Wm, o	4	pt	10 2
260	Spring Peter, o	4	pt	10 2
263	Sage Nelson, o	4	pt	10 4
282	Stephenson Wm, t	4		12 2
288	Sutherland Jno, o	5	e pt	13 2
289	Sutherland Alex, o	5	w	14 2
290	Sutherland Daniel, o	5	pt	14 2

Stephenson John O. 4 pt 10 2 80
Stephenson James O. 4 pt 10 2 80

42	Talbot Freeman, o	1	n	10 1
43	Talbot John, f s	1	n	10 1
50	Tamplin Wm, o	1		12 4
65	Taylor Samuel, o	1	e	16 3
68	Telfer Gilbert, o	1	s	17 3
70	Teepie Peter, o	2	n e pt	16 3
175	Thompson Jno, o	3	n	14 2
182	Torrence Wm, o	3	n w	18 3
224	Torrence John, f s	3	n w	18 3
224	Tallack Mark, o	4	pt	10 2

44	Woods Wm, o	1	s	10 1
44	Woods Allen, f s	1	s	10 1
46	Woods Joseph, f s	1	s	10 1
66	Wallace Jno, o	1	n	17 3
67	Wallace Meredith, o	1	n	17 3
87	Wilson James, o	2	s	14 2
90	Wilkinson George	2	n e pt	13 3
91	Wilson Samuel, o	2	s	13 2
97	Woods Allen, o	2	n	10 1
98	Wilson Geo, o	2	s	10 2
166	Wilson Joseph, o	3	s	11 6
231	Webster John, o	4	pt	10 2
264	Wilson Samuel, o	4	pt	10 2
281	Wilson John, o	4	pt	11 2
297	Walker Alex, o	5	n e pt	16 2

Wilson Hugh 4 pt 10 2 80

NORTH DORCHESTER VOTERS' LIST.

PART SECOND.

Persons entitled to vote at the Municipal Elections only.

74	Ingram Mrs, o	2	s	pt 18	3	271	Stephenson John, o	4	s	w	pt 11	2
						272	Stephenson Jas, o	4	s	w	pt 11	2
						273	Stephenson Wm, o	4	s	w	pt 11	2
195	Johnston Mrs, o	4	n	e	15	2						
286	Johnston Alex, o	5		pt 12	2							
252	McNiven John, o	4		pt 10	2	72	Worth Mrs, o	4	n	pt n	16	2

PART THIRD.

Persons entitled to vote at Elections to the Legislative Assembly only.

None.

Polling Sub-Division No. 3

Comprising Lots A, B and No. 1 to 12, both inclusive, in Concession A, B and No. 1, South of the River Thames.

PART FIRST.

Persons entitled to vote at both Municipal Elections, and Elections to the Legislative Assembly.

No. on Roll	Name	Con.	Lot.	P.O.	No. on Roll	Name	Con.	Lot.	P.O.
305	Aylsworth W T, ow	a		2 9	437	Clifford Robert, o	B		5 9
439	Armour Archie, t	b		4 9	457	Couch Joseph, o	B		3 9
501	Anderson John, o	1		pt 11 15	457	Couch Wm, fs	B		3 9
509	Arms Thos, o	1		s e 11 8	459	Choate John, o	B		1 & 2 9
521	Allison Anthony sr, o	1		w 7 9	460	Choate Frederick, t	B		1 & 2 9
522	Allison Anthony jr, t	1		w 7 9	461	Choate Chas, fs	B		1 & 2 9
531	Atkins Richard, o	1		4 9	510	Connor Thos, t	1		s e 11 8
574	Allison Wm, o	1		pt 6 9	532	Collins Wm, o	1		w 3 9
					533	Collins John, t	1		n w 3 9
					534	Collins David, t	1		s w 3 9
					535	Collins Jas, o	1		s w 3 9
					582	Clifford Thomas, o	B		s w 9 9
423	Bennet Thos, o	b		s pt 11 2	425	Densham Wm, o	B		n pt 11 2
424	Bennet Geo, t	B		s pt 11 2	451	Dundas Jas, o	B		pt 4 9
442	Burns Hugh, t	B		pt 4 9	452	Dundas Wm, o	B		n pt 6 9
448	Boughner Jacob, o	B		pt 4 & 5 9	464	Dundas John C, t	B		s pt A & B 9
450	Bennet Stephen, o	B		pt 4 9	465	Dundas Albert, t	B		s pt A & B 9
490	Bratt Geo, o	1		pt 11 17	465	Dundas Nathan, t	B		s pt A & B 9
500	Bratt Jessie, o	1		pt 11 17	455	Day Jas, t	B		pt 3 9
503	Beattie Wm, o	1		pt 11 20	496	Dakin Wm, o	1		pt 12 8
504	Blair Jas, o	1		pt 11 15	497	Dakin Mark, o	1		s w pt 12 8
506	Beacham Wm, o	1		s pt 11 21		Dundas Thos, t	1		n s 6 9
507	Banks John, t	1		s pt 10	536	Dundas John N,	1		w pt 2 9
548	Butler Erwin, o	1		n e pt A 10	537	Dundas Jas W, o	1		e pt 2 9
549	Butler Francis E, fs	1		n e pt A 10	538	Dundas Chas, o	1		w 1 9
583	Barr Samuel, o	1		w s e 10 8	539	Dundas Robert, fs	1		w 1 9
584	Barr John, fs	1		w s e 10 8	540	Dundas Wm, fs	1		w 1 9
	Chambers Wm, o	A		s pt 1 9					
310	Capstick Jonathan, o	A		w pt 10 2					
311	Capstick Wm E, fs	A		w pt 10 2					

P.O.
16 3
10 2

12 2
12 2
14 2
18 3

18 3
16 3
16 3
15 3
18 2
18 2
13 2
pt 10 2
pt 10 2
pt 10 4
pt 10 2
12 2
12 2
14 2
pt 14 2

10 1
10 1
12 4
16 3
17 3
pt 16 3
14 2
18 3
18 3
pt 10 2

10 1
10 1
10 1
17 3
17 3
14 2
pt 13 3
s 13 2
10 1
10 2
11 6
pt 10 2
pt 10 2
pt 11 2
e pt 16 2

10 2 80
10 2 80

NORTH DORCHESTER VOTERS' LIST.

No. on Roll	Name.	Con.	Lot.	P.O.	No. on Roll	Name.	Con.	Lot.	P.O.
302	Erwin Geo, o	A	n pt 1	9	435	McNiven Angus, t	B		4 9
421	Ensign Jacob, o	B	pt 12	2	440	McNiven Hugh, t	B		4 9
512	Egan John, o	l	w	9 8	453	McKinzie Ronald, o	B	pt 4	9
513	Egan Jas, o	l	w	9 8					
515	Egan Wm, o	l	e	9 8					
523	Empoy Wm, o	l	n e	7 9	498	Fyott James, o	l	s e pt 12	8
525	Empoy Andrew, o	l	n	6 9	530	Farmer David, t	l	e	5 9
526	Empoy Adam sr, o	l	n	6 9					
527	Empoy Adam jr, f s	l	n	6 9					
	Foreman John, t	B	pt 12	2	308	Rippin George, o	A & B	n pt 10	2
422	Fulkinson Joseph t	B	s e pt 12	2	430	Richardson Jno, t	B	pt 7	9
426	Fifield Hiram, o	B	s pt 10	9	494	Rowake Bartholomew, o	B	pt 5	9
442	Frallok Geo, o	B	pt 3 & 4	9	445	Russel Jno, o	B	pt 3 & 4	9
441	Frallok Wm, t	B	pt 4	9	502	Rae Wm, o	l	pt 11	9
444	Frallok Mannis, oc	B	pt 3	9	528	Rowse James H, o	l	w	5 9
508	Franks Thos,	l	pt 12	2					
516	Fifield Wash, t	l	e	9 8	309	Smith Jacob, o	A	e	9 2
						Sharan Wm, t	B	n w	9 2
306	Glendenning Wm, o	A	pt 8 & 9	2	428	Small Charles, o	B	pt 8	9
					429	Small J J, o	B	pt 7	9
304	Howey Jas, o	A	pt 1	10	433	Sharp Isaiah, o	B	pt 5 & 6	9
312	Hampton Richard, o	A	pt 11 & 12	2	446	Skinner Wm, o	B	pt 4	9
441	Harding Wm, o	B	pt 4	9	447	Sharron Jno, o	B	pt 4	9
443	Hankam Elijah, o	B	pt 4	9	454	Stuart Peter	B	pt 4	10
546	Huntly Thomas, o	B	pt A & B	9	458	Strobridge Mr, oc	A & B		8 9
466	Halpen Edward, o	B	pt A & B	9	529	Ston Joseph, o	l	e	5 3
					545	Sharp Caleb, o	l	s w pt B	9
					547	Shannon Jno, o	l	s e A & B	9
462	Judge James, o	B	pt 11 & 12	2	431	Taylor James, t	B	pt 5	9
517	Jolly Wm, o	l	e pt 10		683	Topham Peter, o	l	pt 12	8
303	Lewis Wm, t	A	s pt 1	9	524	Uglov Wm, o	l	s e	7 9
673	Lane Thomas	l	pt 12	8					
674	Lane Reuben	l	pt 12	8	427	Vincent Edward, o	B	e	9 2
432	Martin Wm, o	B	pt 5	9	419	Whealy Wm S, o	B	pt 12	2
449	Magee Charles A, o	B	pt 4	9	420	Whealy Albert W, f s	B	pt 12	2
511	Morrison Wm, o	l	n w	10 8	519	Wallace Kidman, o	l	w	8 9
541	Magee Edward, t	l	e	1 9	520	Wallace Walter, o	l	e	8 9
542	Magee Isaac, t	l	n w pt B	9					
543	Magee Robt, t	B	w pt B	9					

PART SECOND.

Persons entitled to vote at Municipal Elections only.

756	Booth Wm, o	l	pt 11	17	752	Dibb Rich, o	l	pt 11	15
					463	Dundas Mrs, o	B	pt A & B	9

NORTH-DORCHESTER VOTERS' LIST.

1975	Johnson Joseph, o	1	pt 12	1
505	Kernahan Wm, o	1	pt 11	15
557	Rath Henry, o	B	pt 4	9
558	Rath Mathew, o	B	pt 4	9

655	Shields James, o	1	pt 11	15
740	Sanderson Samuel, o	1	pt 11	15
684	Topham Jno, f s	1	pt 12	8
685	Topham Wm, f s	1	pt 12	8

PART THIRD.

Persons entitled to vote at the Elections of the Legislative Assembly only.

None.

Polling Sub-Division No. 4

Comprising Lots Nos. 13 to 24, both inclusive, in Concessions A, B, and No. 1, South of the River Thames.

PART FIRST.

Persons entitled to vote at both Municipal Elections and Elections to the Legislative Assembly.

No. on Roll	Name	Con.	Lot	P.O.
468	Atkins Isaiah, o	1	n s	24 6
486	Abbet Benjamin, o	1	sw pt	18 2
490	Aylsworth Richard P, o	1	n w	17 2
491	Aylsworth Wm N, o	1	n e	17 2
330	Baker Jessie, o	A	pt	17 2
338	Barry David, oo	A	pt	18 2
342	Buck Jeremiah, o	A	pt	21 2
343	Buck Jeremiah W, f s	A	pt	21 2
359	Barrows Joseph C, o	A	pt	24 6
360	Barrows Isaac, o	A	pt	24 6
372	Boothby Joseph, oo	B	pt	24 6
373	Barnard Luther, o	B	pts	24 6
374	Barnard Albert, f s	B	pts	24 6
375	Barnard Jno, f s	B	pts	24 6
397	Harry Michael, o	B	n w pt	18 4
413	Banks George, o	B	sw	13 8
414	Banks Wm, o	B	n w	13 2
415	Budden George, o	B	n e pt	13 2
494	Byrnes Jno, o	1	pt	15 15
610	Banks Wm G, o	1	s	13 8
611	Banks, Richard, f s	1	s	13 8

No. on Roll	Name	Con.	Lot	P.O.
469	Court Wm, o	1	sw pt	24 6
470	Court John, f s	1	sw pt	24 6
479	Court Samuel, o	1	sw	20 6
406	Dunn Jno, o	B	s	17 2
407	Dunn Thos, W, f s	B	s	17 2
479	Duncan David, o	1	e	20 6
480	Duncan Wm, f s	1	e	20 6
378	Edwards Wm, o	B	n & w pt	22 6
379	Edwards Walter, f s	B	pt	22 6
325	Fordyce George, o	A	sw pt	17 2
354	Fleming Wm, t	A & B	sept	24 6
355	Fleming Alex, t	A & B	sept	24 6
467	Francis George, o	A & B	sept	24 6

Richard Tobias 2 A pt 17 2

317	Cave Wm, o	B	w pt	16 2
319	Chittick Francis, o	A	pt 16 & 17	2
320	Chittick George, o	A	pt 16 & 17	2
221	Collar David, o	A	pt	17 2
339	Cartwright Wm, I, o	A	pt	19 2
341	Collier Jno, oo	A	w pt	20 2
344	Cartwright James, o	A	w	21 6
362	Craig Wm, o	A	pt	24 6

385	Gilmour Andrew, o	A, B	w	23 6
386	Gilmour David, o	B	sept	22 6
387	Gilmour Jno, o	B	sept	23 6
398	Graham Joseph, o	B	sept	18 2
478	Gilmour James, o	1	e	21 6

380	Harris George, [o	B	sw	21 6
381	Harris-Henry, o	B	sept	21 6
382	Harris Jno, f s	B	sept	21 6

Lot. P.O.
4 9
4 9
pt 4 9
pt 12 8
e 1 5 9
n pt 10 2
pt 7 9
pt 5 9
3 & 4 9
pt 11 9
w 1 5 9

e 1 9 2
w 1 9 2
pt 8 9
pt 7 9
5 & 6 9
pt 4 9
pt 4 9
pt 4 10
e 1 9 9
e 1 5 3
v pt 8 9
A & B 9

pt 5 9
pt 12 8

e 1 7 9

e 1 9 2

pt 12 2
pt 12 2
8 9
8 9

11 15
B 9

Handwritten initials

NORTH DORCHESTER VOTERS LIST.

No. on Roll	Name.	Con.	Let.	P.O.
393	Harris Henry, f s.....	B	e pt 21	6
384	Harris George, f s.....	B	e pt 21	6
405	Hayes James, o.....	B	pt 17	2
616	Hartle George, o.....	l	s e pt 14	8

No. on Roll	Name.	Con.	Let.	P.O.
337	Partlow Wm, o.....	A	pt 18	10
349	Piggott Henry, o.....	A	pt 22 & 23	6
358	Piggott Wm, f s.....	A	n w pt 24	6

322	Johnston George, t.....	A	pt 17	2
345	James James A o.....	A	pt 22	6
370	Jackson, Wm, o.....	B	pt 24	6
472	Jackson John, o.....	l	n 1/2 23	6
	Jackson David, o.....	l	n 1/2 23	6
476	Johnston Henry, o.....	l	o pt 14	9

323	Richardson Thomas, t....	A	pt 18	2
356	Rowat Archibald, o.....	A	n e pt 24	6
376	Rolph James, o.....	B	s w 1/2 22	6
377	Rolph Sol, f s.....	B	s w 1/2 22	6
476	Ridler Wm, o.....	l	s e pt 22	6

Johnston Wm O A pt 17 2

336	Kellam Thos, o.....	A	s e pt 18	2
-----	---------------------	---	-----------	---

326	Sweet Nathan, t.....	A	pt 17	2
329	Snively David, o.....	A	pt 17	2
347	Silk Henry, o.....	A	pt 22	10
358	Smith Peter, o.....	B	n w pt 20	6
387	Smith Geo, f s.....	B	n w pt 20	6
388	Smith Aaron, t.....	B	n w pt 20	6
394	Smith Melvin, o.....	B	pt 19	2
399	Sweet Shelden o.....	B	n e 1/2 18	2
400	Sweet Orlow, o.....	B	n e 1/2 18	2
393	Saronghill Bryron, o.....	B	n w pt 20	2
402	Saunders Wm, o.....	B	n e 1/2 17	2
408	Smith Alfred, o.....	B	s w 1/2 18	2
409	Smith Jacob, o.....	B	s w 1/2 18	2
417	Steele Jno, sr, o.....	B	n pt 12 & 13	2
418	Steele Jno, jr, t.....	B	n pt 12 & 13	2
495	Smith Adelbert, t.....	l	n w pt 16	2
618	Strathdee George, o.....	l	s pt 15	8
619	Strathdee Jno, t.....	l	s pt 14	8
620	Strathdee James, t.....	l	s pt 14	8
625	Spring Peter, o.....	l	s e 1/2 16	8

350	Leith Alex, t.....	A	pt 23	6
351	Leith Geo, t.....	A	pt 23	6
391	Lewis Wm, t.....	B	s w pt 19	2
481	Lane James B, o.....	l	s 1/2 18	2
482	Lane Nelson J, f s.....	l	s 1/2 18	2
483	Lane J H f s.....	l	s 1/2 18	2
484	Lane Wm B, f s.....	l	s 1/2 18	2

334	Morley Samuel, o.....	A	pt 17	2
340	Maybes Orlow, o.....	A	w pt 20	2
361	Myrick Levie, o.....	A	pt 24	6
389	Morehouse Myles, o.....	B	o pt 20	6
390	Madole Moses, t.....	B	s w pt 20	6
473	Morehouse Thos, o.....	l	w 1/2 22	6
474	Morehouse Jeremiah, o..	l	n e pt 22	4
475	Morehouse Charles, t.....	l	n e pt 22	6
485	Mullen Wm, oc.....	l	n w 1/2 19	2

331	Turnbull Wm, o.....	A	pt 17	2
392	Temple James, o.....	B	pt 19 & 20	2
393	Turpin James, f s.....	B	o pt 19	2
471	Thompson Andrew, o.....	l	s 1/2 23	6
	Thompson David, o.....	l	s 1/2 23	6

315	Vincent Wm, t.....	B	e 1/2 15	2
324	Vincent John, o.....	A	pt 17	2

314	McLean Hugh, o.....	B	e 1/2 15	2
316	McLean Robt, o.....	B	w 1/2 15	2
318	McDonald Jas, oc.....	A	pt 16	2
363	McRoberts Jeremiah, o..	A	pt 24	6
416	McSloy Matthews, o.....	B	pt 13	2
492	McKerlie Wm, o.....	l	n e pt 14	4
493	McKerlie John, o.....	l	n e pt 14	4
626	McNiven Donald, o.....	l	s w pt 16	2
627	McNiven Angus, o.....	l	s w pt 16	2

313	Wallace Cornelius, t....	A & B	14	
369	Wilson Joseph, o.....	B	pt 24	6
477	Webber Robert, o.....	l	s w 1/2 21	6
612	Walker Jno, o.....	l	s 1/2 13	8

364	O'Dell Fred A, o.....	B	pt 24	6
-----	-----------------------	---	-------	---

Smith Wm Oc 1 pt 18 2
Smith Philip J B e pt 20 2

334

331
392
393

331

NORTH DORCHESTER VOTERS' LIST.

PART SECOND.

Persons entitled to vote at Municipal Elections only.

327	Carns Miss, o.....	A	pt 17 2	325	Mitchell Joseph, o.....	A	pt 17 2
				332	Mitchell George, o.....	A	pt 17 2
718	Dunn John P, o.....		1 pt 12 & 13 13	368	McDermott Mrs, o.....	B	pt 24 6
				732	McMurray Mrs, o.....	A	pt 17 11
366	Giles Fred, o.....	A	pt 24	401	O'Brien Mrs, o.....	B	n w 17 6
488	Hayes Miss, o.....		1 n w 18	357	Piggott Mrs, o.....	A	pt 24 6
333	Johnston Wm, o.....	A	pt 17 2	395	Turpin Mrs, o.....	B	cept 19 2
337	Jackson Mrs, o.....	B	pt 24 6				
335	Lyman Stephen, o.....	A	pt 17 2				
473	Lewis Mrs, o.....		1 n w 20 6				

PART THIRD.

Persons entitled to vote at Elections to the Legislative Assembly only.

None.

Polling Sub-Division No. 5

Comprising Lots 19 to 24, both inclusive, in Concessions 2, 3, 4, 5 and 6 south of the River Thames.

PART FIRST.

Persons entitled to vote at both Municipal Elections, and Elections to the Legislative Assembly.

No. on Roll	Name.	Con.	Lot.	P.O.	No. on Roll	Name.	Con.	Lot.	P.O.
659	Allen Stephen, o.....	2	s 1/2	24 15	769	Brown Jno, f s.....	5		21 17
937	Abbot Albert, o.....	6		pt 24 17	770	Brown Archie, f s.....	5		21 17
942	Abbot Wm, o.....	6		pt 24 17	771	Brown Hugh, f s.....	5		21 17
667	Bane George, o.....	6		pt 24 17					
638	Beattie Edward, o.....	2		21 15	568	Campbell Neil, t.....	3	n 1/2	19 15
639	Beattie James, f s.....	2		21 15	736	Campbell William, sr, o.....	4	n 1/2	20 15
640	Beattie Wm, f s.....	2		21 15	737	Campbell William, jr, f s.....	4	n 1/2	20 15
641	Beattie Jno, f s.....	2		21 15	738	Campbell Daniel, f s.....	4	n 1/2	20 15
650	Beattie Charles, o.....	3	n 1/2	24 15	754	Collard Marshall, o.....	5	n w 1/2	24 17
745	Barton George, o.....	4	n 1/2	23 15	757	Collard William, o.....	5	n p t s 1/2	24 17
746	Barton Wm, f s.....	4	n 1/2	23 15	931	Campbell James B, o.....	6		pt 24 17
747	Barton Walter, M, f s.....	4	n 1/2	23 15	932	Collie Wm, sr, o.....	6		pt 24 17
756	Booth Wm, o.....	5	o p t	24 17	934	Collie Wm, jr, t.....	6		pt 24 17
759	Brown Dougald, o.....	5		23 17	949	Crawford Alex, t.....	6		pt 24 17
760	Brown Archie, f s.....	5		23 17	958	Campbell Duncan, o.....	6		pt 24 17
767	Brown Neil, sr, o.....	5		21 17					
768	Brown Neil, jr, f s.....	5		21 17					

pt 18 10
& 23 6
pt 24 6

pt 18 2
pt 24 6
22 6
22 6
pt 22 6

pt 17 2
pt 17 2
pt 22 10
pt 20 6
pt 20 6
pt 19 2
18 2
18 2
pt 20 2
17 2
18 2
18 2
13 2
13 2
pt 16 2
15 8
14 8
14 8
16 8

18 2
20 2

17 2
20 2
19 2
23 6
23 6

15 2
17 2

14
24 6
21 6
13 8

[Handwritten initials]

NORTH DORCHESTER VOTERS' LIST.

No. on Roll	Name.	Con.	Lot.	P.O.	No. on Roll	Name.	Con.	Lot.	P.O.
658 j	Dodd Andrew, o	3	e ½	22 15	741 j	McCallum Angus, f s	4	n ½	21 11
660 j	Dibb James, o	3	s w ½	22 15	953 j	McCallum Jno, o	4	s w ½	24 17
784	Dunham Samuel, o	4	s pt	19 11	973 j	McMurray Levi, o	5	n w pt	19 11
744	Dibb Daniel, o	4	s e ½	22 17	944 j	McKellar Daniel, o	6		pt 24 17
750	Dibb John, o	4	c pt	24 15	945 j	McKellar George, o	6		pt 24 17
751 j	Dibb John G, f s	4	c pt	24 15	950	McPhail Archie, o	6		pt 24 17
752	Dibb Richard, o	4	n pt s ½	24 15	957	McPhail James, o	6		pt 24 17
					970	McNiven Robt, o	6		pt 24 10
742 j	Farquhar Charles o	4	s e ½	21 11	971	Nugent Thomas, o	6		pt 24 4
743	Farquhar Jno, o	4	s w ½	21 11	761 j	Orr Wesley, o	5	s w ½	22 17
748 j	Finch Jno, o	4	s ½	23 17	953	O. mstead Lewis, o	6		pt 24 17
921	Francis George, o	6	s pt	19 6	644 j	Pasmore George, o	2	n pt	23 15
929 j	Fitchet James, o	6	e ½	22 17	645 j	Pasmore W J, f s	2	n pt	23 15
926 j	Groat Edward, o	6		21 11	659	Pickle Wilmot, o	3	n ½	21 15
927 j	Groat Wm, f s	6		21 11	j	Pickle Wilmot, jr, f s	3	n ½	21 15
954 j	Glance Henry, o	6		pt 24 17	940 j	Potts Joseph, o	6		pt 24 17
775	Hazen Mark, o	5	c pt	19 11	764 j	Rogers Albert, o	5	n w pt	22 11
947 j	Hall Jno, o	6		pt 24 17	765 j	Rogers Edward, o	5	n e pt	20 11
959 j	Henry William, o	6		pt 24 17	655	Shields James, o	3		pt 23 15
634 j	Jeffry Thomas, o	2	e ½	20 11	656 j	Shields Charles, f s	3		pt 23 15
635 j	Jeffry Andrew, o	2	e ½	20 11	736 j	Swails Bartholomew, o	4	n ½	19 11
735 j	Jackson Henry, o	4	s ½	19 11	719 j	Sanderson Samuel, o	4	n w ½	24 15
766 j	Kerrott Japhet, o	5	s e ½	22 17	925 j	Shain James, o	6	s ½	20 11
733	Lester Alex, t	4	s e ½	19 11	943	Skelding Charles, o	6		pt 24 17
777 j	Lesman Samuel, t	5	s w ½	19 11	946	Stuart Alex, t	6		pt 24 17
j	Longfield Geo, o	6		pt 24 17	636	Thompson Wm, sr, o	2		w ½ 20 6
648	Manning Charles, o	2	s w ½ s ½	24 6	637 j	Thompson Wm, jr, f s	2		w ½ 20 6
654	Manning George R, t	3		pt 24 15	642	Thompson Wm, o	2		s ½ 22 15
762	Moore Wm, sr, o	5	n e pt	22 11	643 j	Thompson Jas D, f s	2		s ½ 22 15
763 j	Moore Wm, jr, f s	5	n e pt	22 11	647 j	Thompson Robert, o	2	n w ½	24 6
772 j	Marsh Elgin, o	5	c pt	19 11	776	Tooley Richard, o	5	s e pt	19 11
774	Marsh Randle, o	5	n pts s ½	19 11	941 j	Tibbitts Daniel, o	6		pt 24 17
922 j	Marsh Wm R, o	6	n pt	19 11	956	Taylor John, o	6		pt 24 17
938	Moore Wm, o	6		pt 24 17	758 j	Venning Andrew, o	5	s w ½	24 17
629	McKay Donald, o	2		19 2	651	Walker David, o	3		s ½ 24 15
628 j	McNiven James, t	2		19 2	652 j	Walker Samuel, f s	3		s ½ 24 15
646 j	McLelland Robert, o	2		pt 23 15	653 j	Walker David, f s	3		s ½ 24 15
657 j	McLelland James, o	3	s w pt	23 15	928	Willis George, o	6		w ½ 22 17
662 j	McVicar Jno, f s	4	n e ½	22 15	930 j	Willis Merrit, o	6		pt 24 17
663	McCallum Neil, sr, o	3		w ½ 20 11	936	Willis Isaac, o	6		pt 24 17
664 j	McCallum Neil, jr, f s	3		w ½ 20 11	948	Wright Charles, o	6		pt 24 17
665 j	McCallum Duncan, o	3		e ½ 20 11	965	Whan Wm, o	6		pt 24 17
666 j	McCallum George, o	3		s w ½ 19 11	923 j	York Augustus, o	6	n w ½	19 11
667	McCallum Angus, o	3		pt 19 11	924 j	York Hiram, o	6	n ½	20 11
739	McCallum Daniel, o	4		n ½ 21 11					
740 j	McCallum Neil, f s	4		n ½ 21 11					

LD Manning John o 4 pt 19 11

LD

LD

NORTH DORCHESTER VOTERS' LIST.

PART SECOND.

Persons entitled to vote at the Municipal Elections only.

968	Burnes Mrs, o.....	6	pt 24 17	969	Glance Mrs, o.....	6	pt 24 17
935	Foster Mrs, o.....	6	pt 24 17	661	McVicar Mrs, o.....	4	ne 1/2 22 15
951	Ferguson Mrs, o.....	6	pt 24 17	955	Willie Mrs, o.....	6	pt 24 17

PART THIRD.

Persons entitled to vote at Elections to the Legislative Assembly only.

None.

Polling Snb-Division No. 6

Comprising Lots 13 to 18, both inclusive, in Concessions 2, 3, 4, 5 and 6, south of the River Thames.

PART FIRST.

Persons entitled to vote at both Municipal Elections and Elections to the Legislative Assembly.

No. on Roll	Name.	Con.	Lot.	P.O.	No. on Roll	Name.	Con.	Lot.	P.O.
785	Aroher Samuel, t.....	5	s 1/2	16 14.	671	Demaray David, o.....	3	se pt	18 11.
917	Abbot Wm, o.....	6	n 1/2	18 14	672	Demaray Daniel, f s.....	3	se pt	18 11.
918	Abbot Edward, f s.....	6	n 1/2	18 14	673	Dennis Charles, t.....	3	sw 1/2	17 11
919	Abbot Jno, f s.....	6	n 1/2	18 14	718	Dunn John P, o.....	4	n 1/2	13 8
					723	Demaray Pheneas, o.....	4	n pt	16 11
					800	Davidson George, t.....	5	se pt	14 14
610	Banks Wm G, o.....	2	ne 1/2	13 8					
611	Banks Richard, f s.....	2	ne 1/2	13 8					
674	Brunskill Thomas, o.....	3	se 1/2	17 11	779	Ewin Freeman, o.....	5	n pts 1/2	18 11
729	Brodie Alex A, o.....	4	s 1/2	18 11	780	Ewin Jno, o.....	5	sw 1/2	18 11
730	Brodie Jno, f s.....	4	s 1/2	18 11	908	Eaton James, o.....	6	se 1/2	14 14
911	Barr Wm, o.....	6	n w pt	16 14	912	Ewins Samuel, o.....	6	s 1/2	16 14
					913	Ewins Wm, o.....	6	s 1/2	16 14
					914	Ewin James, sr, o.....	6	n pt	17 14
					915	Ewin James, jr, o.....	6	n pt	17 14
					916	Ewin Robt, o.....	6	n pt	17 14
806	Coats Wm, o.....	2	s pt	13 8					
677	Campbell James, o.....	3	se 1/2	15 8					
678	Campbell David, o.....	3	s 1/2	15 8	790	Finch Henry, o.....	5	w 1/2	14 14
679	Campbell Colin, o.....	3	s pt n 1/2	15 8	791	Francis Jno B, o.....	5	se 1/2	14 14
680	Campbell David, o.....	3	n pt	15 8	909	Folliok Jesse, t.....	6	n pt	14 14
681	Campbell Archie, f s.....	3	n pt	15 8					
680	Campbell Jno, f s.....	3	n pt	15 8					
682	Campbell Colin, f s.....	3	n pt	15 8					
724	Cooper Lewis, o.....	4	ne 1/2	17 11					
804	Colhoun Samuel, o.....	5	pt	13 14.	793	Groat James, o.....	5	sw pt	13 14.
904	Cline Seth, o.....	6	se 1/2	13 14					
905	Cline Jacob, o.....	6	se 1/2	13 23					
906	Colhoun John, t.....	6	s 1/2	13 14					
					616	Hartle George, o.....	2	n 1/2	14 8
					617	Hartle Wm, f s.....	2	n 1/2	14 8

NORTH DORCHESTER VOTERS' LIST.

No. on Roll	Name.	Con.	Lot.	P.O.	No. on Roll	Name.	Con.	Lot.	P.O.
778	Hunter Paul, o	5	n pt	18 11	801 j	McMillan Jno, o	5	n pt s	13 10
786	Hunter Wm, o	5	n e	18 11	907	McVicar Jno, o	6	n	13 14
787	Hunter Thomas, o	5	n w pt	15 11					
792	Hazel Daniel, o	5	s pt	13 14					
792 j	Hazen James, o	5	s pt	13 14	783	Northcote Jno, t	5	pt	16 11
689	Jelly Wm, o	3	s	13 8	613 j	Spring Daniel, o	2	n w pt	14 8
722	Jackson Wm, o	4	s	17 11	614 j	Spring David, o	2	n w pt	14 8
794	Jelly J J, o	5	s pt	13 14	615	Spring Daniel, sr, o	2	pt	14 8
799	Jackson James, o	5	s pt	13 14	618	Strathdee George, o	2	n pt	15 8
802	Johnston Reuben, o	5	s pt	12 14	619 j	Strathdee Jno, t	2	n pt	15 8
					620	Strathdee James, t	2	n pt	15 8
					624 j	Spring Edward, o	2	n e	16 8
717 j	Kunze Francis, o	4	s	13 & 14 14	625 j	Spring Peter, o	2	n pt	16 8
782 j	Kingswell Isaac, t	5	pt	16 11	670	Stanly George, o	3	s w pt	18 11
					687	Spence Thoms, o	3	n e pt	13 8
					688 j	Spence Nelson, fs	3	n e pt	13 8
					788	Secord Adam H, o	5	s e pt	15 14
					789 j	Secord Adam E, t	5	s e pt	15 14
607 j	Myrick Robert, o	2	s pt	13 8					
621	Malpass Wm F, o	2	s pt	15 & 16 8	683	Topham Peter, o	3	n	14 8
622	Malpass Wm, fs	2	s pt	15 & 16 8	684 j	Topham Jno H, fs	3	n	14 8
623	Malpass Alfred, fs	2	s pt	15 & 16 8	685 j	Topham Wm, fs	3	n	14 8
725 j	Manning Jacob, o	4	n w	17 11	784 j	Tooley Wm S, o	5	s	17 14
626 j	McNiven Donald, o	2	n	17 2					
627 j	McNiven Angus, o	2	n	17 2	667 j	Watcher Wm, o	3	w pt	18 11
630	McNiven Angus, o	2		18 11	633	Watson Robt, oc	2	n w pt	18 11
631	McNiven Archibald, fs	2		18 11	726	Ward Peter, o	4	o pt	18 11
632	McNiven Wm, fs	2		18 11	727 j	Ward George, t	4	n w pt	18 11
675	McCallum Jno, o	3	s	16 8	728 j	Ward Jefferson, t	4	s pt n	18 11
686 j	McCallum James, o	3	s	14 8	920 j	Wat: Jno R, t	6	n w pt	18 11
719	McCallum Peter, sr, o	4	w	15 11					
720	McCallum Peter, jr, fs	4	w	15 11	910	York Wm, o	6		15 14
721	McCallum Angus, fs	4	w	15 11					
731 j	McCallum Jno, o	4	s w pt	18 11					
781 j	McMurray Moris, o	5	n e pt	18 11					
797 j	McKee Joseph, fs	5	n w pt	13 14					
798 j	McKee Wm, fs, o	5	n w pt	13 14					

PART SECOND.

Persons entitled to vote at Municipal Elections only.

676	Manning Mrs, o	3	n	16 8	815	Pyott Mrs, o	5	e pt	13
732	McMurray Mrs, o	4	s w pt	18 11	803	Wallace Mrs, o	5	pt	13 14
796	McKee Mrs, o	5	n w pt	13 14					

PART THIRD.

Persons entitled to vote at Elections to the Legislative Assembly only.

None.

NORTH DORCHESTER VOTERS' LIST.

Polling Sub-Division No. 7.

Comprising Lots Nos. 7 to 12, both inclusive, in Concessions 2, 3, 4, 5 and 6, South of the River Thamer.

PART FIRST.

Persons entitled to vote at both Municipal Elections and Elections to the Legislative Assembly.

No. on Roll	Name	Con.	Lot	P.O.
580	Allen Peter, o	2	ne 1/8 9	
581	Allen George, f s	2	ne 1/8 9	
587	Atkins Isaac, t	2	nw pt 9 8	
588	Arms Thomas, o	2	ne 1/10 8	
594	Amos Thomas, o	2	sw pt 11 8	
595	Amos Wm, o	2	sw pt 11 8	
593	Barr Samuel, o	2	s 1/8 8	
584	Barr Jno, f s	2	s 1/8 8	
816	Barrons Henry, o	5	ne pt 12 14	
826	Barr Robert, o	5	s 1/9 14	
827	Bowen Wm H, o	5	nw pt 9 14	
893	Bunkle Wm, t	6	sw pt 9 14	
895	Bowen James, t	6	w 1/10 14	
896	Barr Allen o	6	nw pt 12 14	
901	Barr Cinnamon, o	6	nw pt 12 14	
911	Barr Wm, o	6	se pt 11 14	
577	Cornish Thos, o	2	npts 1/7 9	
582	Clifford Thos, o	2	nw pt 8 9	
589	Connor Thos, t	2	ne 1/10 8	
590	Chilton Thos, t	2	se 1/10 8	
686	Cornish Thos J, o	3	e 1/7 13	
687	Cornish Martin L, f s	3	e 1/7 13	
700	Cornish Jno W, o	4	ne 1/8 13	
707	Crisp Wm T, o	4	s 1/9 10	
906	Colhoun John, t	6	pt 12 14	
599	Dakin Wm, t	2	n pt 12 8	
678	Demaray Samuel, sr, o	3	e 1/10 8	
679	Demaray Samuel, jr, o	3	s 1/10 8	
718	Dunn Jno P, o	4	nw pt 12 8	
812	Evans Jno, jr, o	5	sw pt 12 14	
813	Evans Jno, sr, o	5	nw pt 12 14	
685	Flemming George, o	3	w 1/7 13	
696	Franks Joseph, o	4	s pt 7.10	
697	Franks Walter, o	4	s pt 7.14	
807	Frost Wm, o	5	pt 12.14	
820	Ferguson Colon, o	5	nw pt 10 14	
831	Falls Wesley, o	5	sw 1/8 14	
888	Fitzpatrick Hugh, o	6	nw 1/8 14	
890	Falls James, o	6	ne pt 8 14	
891	Falls Andrew, o	6	pt 9 14	
832	Falls Wm, o	5	se 1/8 14	
892	Falls George, o	6	pt 9 14	

No. on Roll	Name	Con.	Lot	P.O.
894	Ferguson Daniel, o	6	e 1/10 14	
903	Facey Robert, o	6	w pt 12 14	
586	Graham Wm, o	2	nw pt 9 4	
592	Gibson George, o	2	nw 1/10 8	
593	Gibson Jno, t	2	nw 1/10 8	
680	Gee James, o	3	n 1/9 8	
681	Gee Wm, o	3	e 1/9 8	
682	Gee George, f s	3	e 1/9 8	
887	Gilbert James, t	6	se pt 7.16	
897	Grise George, t	6	11 14	
809	Hawkins Frank W, o	5	pt 12 14	
576	Johnston Henry, o	2	n 1/7 9	
601	Jelly Wm, o	2	w pt n 1/12 8	
698	Jenkins Jno, sr, o	4	n pt 7 13	
698	Jenkins Jno, jr, o	4	n pt 7 13	
817	Jackson James, o	5	n 1/11 14	
818	Jackson Alonzo, f s	5	n 1/11 14	
833	Johnston Charles, o	5	w pt 7 14	
834	Johnston Wm, o	5	e pt w 1/7 14	
672	Kelso James, o	3	pt 12 8	
683	Knott Jno, t	3	n 1/8 8	
709	Knott Thomas, t	4	e 1/10 14	
821	Kingwell Philip, t	5	n pt 10 14	
889	Keealer Jacob, o	6	s pt 8 16	
673	Lane Thomas, o	3	n pt 12 8	
674	Lane Reuben, o	3	s 1/11 8	
716	Lethbridge George, t	4	s 1/12 14	
823	Law Alex, t	5	sw pt 10 14	
835	Lucas Daniel, o	5	w pt e 1/7 14	
885	Laur George, o	6	n pt 7 16	
886	Learm Andrew, o	6	se pt 7 23	
902	Lewis Edwin, o	6	nw pt 12 14	
596	Manning Jno G, o	2	ne pt 11 17	
603	Masterman George, t	2	sw 1/12 8	
608	Moaks James	2	sw pt 12 8	
609	Moaks Jno	2	nw pt 12 8	
671	Moir James, o	3	pt 12 8	
708	Myrick Gardener, t	4	s 1/9 14	
714	Morris Wm N, o	4	s pt n 1/11, 12 14	

NORTH DORCHESTER VOTERS' LIST.

Polling Sub-Division No. 8

Comprising Lots A, B, Nos. 1 to 6, both inclusive, in Concessions 2, 3, 4, 5 and 6, South of the River Thames.

PART FIRST.

Persons entitled to vote at both Municipal Elections and Elections to the Legislative Assembly.

No. on Roll	Name	Con.	Lot	P.O.	No. on Roll	Name	Con.	Lot	P.O.
556	Armstrong A 'am, o	2	1 & 2	10	846	Johnston James, o	5	n e	pt 4 13
574	Allison Wm, o	2	e	1/6 9	846	Johnston Jno, o	5	n e	pt 2 16
575	Allison Richard, o	2	w	1/6 9	853	Jolliffe Richd., o	6	e	pt A 16
689	Atkinson Thomas, o	3	n	pt 5 13	854	Jolliffe James, f s	6	e	pt A 16
871	Andrews Jno H, o	6	s	pt 3 16	864	Johnston Wm H, o	6	n e	pt 3 16
					882	Johnston Lawrance, o	6	n	1/5 16
571	Brady Jno, o	2	s w	pt 5 13	686	Kernahan Wm, o	3		pt 5 10
572	Brady Norman, f s	2	s w	pt 5 13	869	Kenny Jno A, t	6	s	pt 3 16
856	Bowey Jno, o	6	w	pt 3 16					
561	Craik James, o	2	pt	n 1/3 9	697	Longfield David, o	3	n	1/3 13
569	Collins Jno, t	2		pt 4 9	697	Longfield Jno, o	3	s	pt 4 13
686	Clement Daniel, o	4		n 1/3 16	842	Lucas Jno W, o	5	n w	1/3 16
838	Cook Silas, o	5	s	1/2 n 1/4 16	848	Lucas Silas, o	5	s	1/1 16
850	Colridge Jno, o	5	pt	A & B 10	849	Longfield Jno, o	5	n e	1/1 16
868	Cook Benjamin, t	6	w	pt 3 16					
861	Dafoe Edward, o	6	n e	1/2 16	562	Marwood Jno, o	2	s w	1/3 9
862	Dafoe Jno, o	6	s e	1/2 16	688	Morris Jno, o	4	s	1/4 13
878	Degroat Jonathan, o	6	s w	pt 4 16	689	Morris Joseph, o	4	n	1/4 13
879	Demaray Richard, o	6	s e	pt 4 16	852	Mara Wm, o	5	pt	A 10
676	Eyres Thomas, o	3	s	pt A 13	872	Monett Wm, o	6	s	pt 3 16
698	Fleming Alex, o	3	s	pt 4 13	874	Miller Theodora, o	6	s e	pt 4 16
876	Ferney Jno, o	6	s e	pt 4 16	670	McVicar Duncan, o	3		2 13
563	George Edwin, t	2	n	pt 4 9	677	McVicar Finley, o	3	n e	pt 3 13
564	George Henry, o	2	s	1/4 13	677	McLaughlan Duncan, o	3	s	pt B 13
565	George Thomas, f s	2	s	1/4 13	683	McCulloch Jno, o	4	e	pt 2 13
566	George Jno, f s	2	s	1/4 13	843	McCallum Jno, o	5	n	1/2 n 1/3 16
839	Goble Daniel, o	5	e	1/4 16	863	McClary Patrick, o	6	n w	1/2 16
845	Groat Daniel, o	5	s w	1/2 16	877	McCallum Angus, o	6	s w	pt 3 16
851	Goff Abraham, t	5	pt	A & B 10	875	McLaughlin Jno, o	6	s w	pt 3 16
884	Gatrige James, t	6	s e	1/6 16	673	Noad Cranswick, o	3	s	pt 1 13
552	Huntly Arthur, o	2	pt	A & B 9	681	Newell Jno R, o	4	s w	1/2 13
671	Howe Jno W, o	3	n	pt 1 13	685	Newell Robert, o	4	s w	1/2 13
672	Howe Robt J, f s	3	n	pt 1 13	687	Newell Wm G, o	4	s	1/3 13
675	Howe Charles, f s	3	n	pt 1 13	881	Nigh Wm T, o	6	s	1/5 16
675	Hicks Jno, t	3	n	pt B 13	554	Phelps Beriah, o	2	pt	A & B 9
675	Hopkins Horace P, o	4		A 13	555	Phelps Othneil, f s	2	pt	A & B 9
679	Hopkins Frank B, f s	4		A 13	570	Parmer David, t	2	n	1/5 9
880	Harron Henry, o	6	pt	n pt 4 16	689	Parsons Henry, o	3	s	pt 3 13
					682	Pike George, o	4	n w	1/1 13

NORTH DORCHESTER VOTERS' LIST.

No. on Roll	Name.	Con.	Let.	P.O.	No. on Roll	Name.	Con.	Let.	P.O.
692	Parsons Thos, o	4	s e p t	5 13	690	Steele John, o	3	s w p t	5 13
693	Parsons Jno, f s	4	s e p t	5 13	691	Steele Wm, f s	3	s w p t	5 13
694	Parsons George, f s	4	s e p t	5 13	692	Steele Robt, f s	3	s w p t	5 13
855	Pullin Robt, t	6	s p t A & B	16	693	Steele Alex, f s	3	s w p t	5 13
553	Robertson Elijah, <i>X 2</i>	2	n w p t	B 9	694	Steele Archie, f a	3	s w p t	5 13
558	Rath Henry, o	2	s e p t	3 9	674	Stone Wm, o	3	n p t	B 12
559	Rath Mathew, o	2	s e p t	3 9	837	Smith Murray, o	5	a p t	6 16
688	Rossiter Stephen, o	3	n p t	6 13	840	Smith Joseph, o	5	n e p t	4 13
695	Rickard Wm, o	4	s p t	6 14	875	Smith Hiram, o	6	s w p t	4 16
837	Rickard Philip, o	5	w p t	6 14	877	Smith George C, o	6	n p t	3 16
860	Roe William, o	6	s w p t	1 16	884	Tocker Jno, o	5	n e p t	2 16
883	Rook George, t	6	w p t	6 16	568	Wooliver Walter, oo	2	n e p t	4 9
691	Rossiter Wm, o	4	n p t	5 13	684	Wright James, o	4	n p t	2 13
550	Shannon Michael, o	2	e p t A	9	841	Whaley George, o	5	n p t	3 16
551	Shannon Michael, f s	2	e p t A	9	888	Whitecraft Jacob, o	5	n p t	1 13
559	Stevens Stephen, o	2	n p t	3 9	858	Walker Johnson, o	6	e p t	1 16
560	Stevens Edward, f s	2	n p t	3 9	859	Walker John, f s	6	e p t	1 16
680	Smith James, o	4	p t A	13	865	Whaley Lyman, o	6	s p t 2 &	3 16
					874	Willisie Henry M, o	6	p t	3 16

PART SECOND.

Persons entitled to vote at Municipal Elections only.

876	Betridge Mrs, o	6	s w p t	3 16	695	Longfield Mrs, o	3	w p t	5 13
867	Cook Mrs, o	6	w p t	3 16	857	Storuch Mrs, o	6	p t A & B	23
873	Degroat Mrs, o	6	s p t	3 16					

PART THIRD.

Persons entitled to vote at Elections to the Legislative Assembly only.
None.

Total number of persons qualified to act as Jurors (605) Six Hundred and Five.

I, D. P. Aylsworth, Clerk of the Municipality of North Dorchester, in the County of Middlesex, do hereby certify that parts one and three of the within list constitute a correct list for the year 1884, of all persons appearing by the last revised Assessment Roll of the said Municipality to be entitled to vote at Elections for members of the Legislative Assembly, and that parts one and two constitute a correct list for the said year, of all persons appearing by the said Roll to be entitled to vote at Municipal Elections in said Municipality. And that a copy of such was posted up in my office at North Dorchester, on the 29th day of July; and I hereby call upon all electors to examine the said list, and if any omissions or other errors are perceived therein to take immediate proceedings to have the said errors corrected according to law.

Dated this 26th day of July, 1884.

D. P. AYLSWORTH,

Clerk of North Dorchester,

Dorchester Station Post Office.

