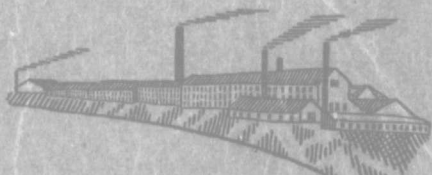


Nova Scotia's Industrial Centre



NEW GLASGOW
STELLARTON
WESTVILLE
TRENTON

F
10395
N4
Bell



SOME FIRST THINGS IN PICTOU COUNTY.

- (1) First Brickhouse, built by Dr. J. D. McGregor. (2) Samson, First Locomotive. (3) Ford Pit. (4) Bridge over East River. (5) First Newspaper. (6) First Schoolhouse.
 (7) American House, now Norfolk. (8) Steamer, East Riding. (9) Elm Tree, under which Dr. Jas. D. McGregor preached second sermon in County.
 (10) First Automobile, owned by R. E. Fanjoy. (11) James William, first steel schooner built in N. S.

Waldren Photo

NOVA SCOTIA'S
INDUSTRIAL CENTRE



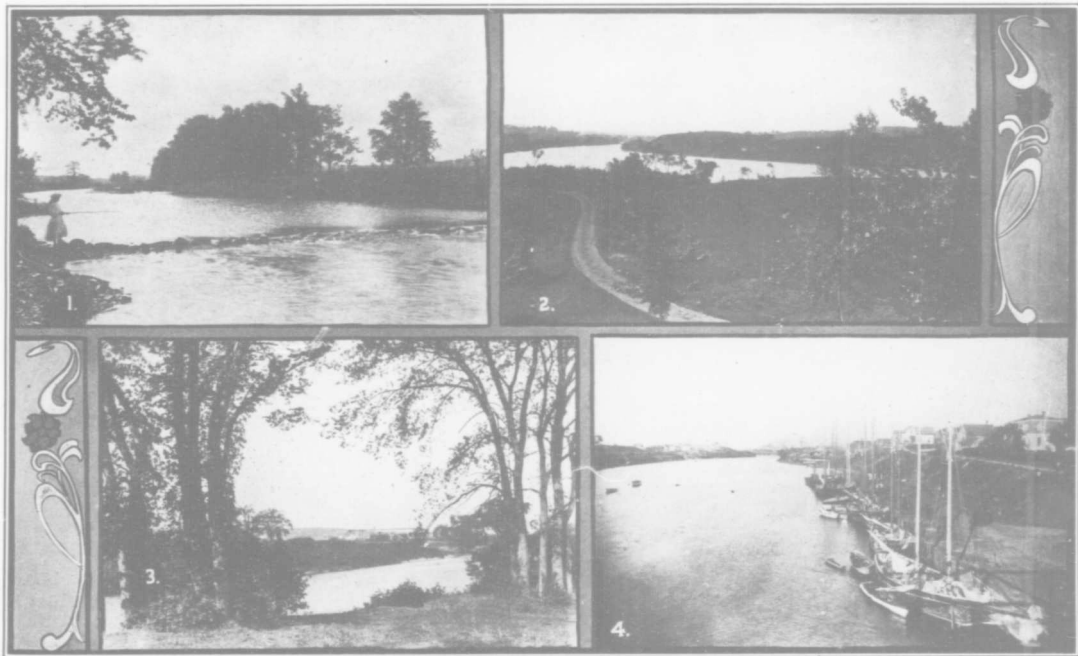
New Glasgow
Stellarton
Westville
Trenton



THE BIRTHPLACE OF STEEL IN CANADA.

1916

ISSUED UNDER THE APPROVAL OF THE COUNCILS
OF NEW GLASGOW, STELLARTON,
WESTVILLE & TRENTON.



SCENES ALONG EAST RIVER.

- (1) View near New Glasgow Pumping Station. (2) Chazaber's Point. (3) View near New Glasgow Pumping Station, opposite Stellarton Bridge.
 (4) East River, looking north from bridge.

Waldren Photo



FOREWORD.

NO section of Nova Scotia, and the Eastern Provinces, has made such marvelous industrial progress as the district of which the towns of New Glasgow, Stellarton, Westville and Trenton are the civic centres. Its large deposits of coal and other minerals, and the location of one of the largest steel plants in America, with its subsidiary industries, makes it loom large in the industrial development of the province, and has given it a more than national importance.

It is to set forth this progress, and to show the factories and other business places in existence that these pages have been written. The book has articles on the government of the towns, natural resources, education, religious activities, transportation, manufacturing and business development of the district, with some one hundred and fifty illustrations of public and private buildings, manufacturing and business houses. Containing about one hundred pages, and printed on coated book paper, it will not only be a correct index of the district's prosperity but also a souvenir to keep or send away to friends, pointing out the advantages the district offers as an industrial, business and residential centre.

John S. Grant
MAYOR NEW GLASGOW

Hugh Campbell
MAYOR STELLARTON

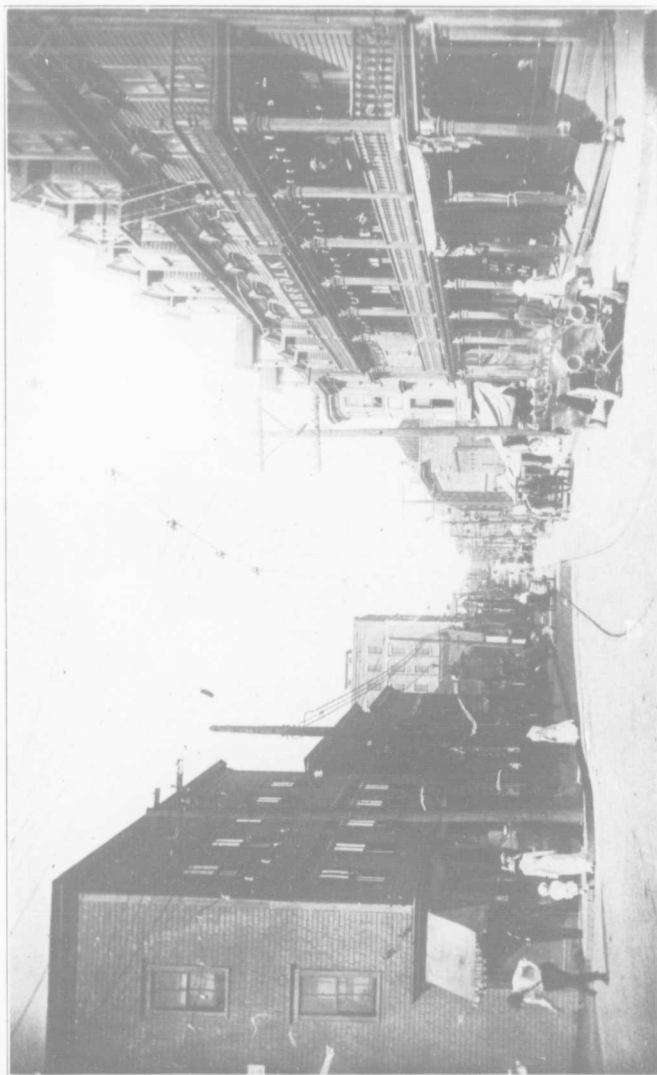
H. A. McQuarrie
MAYOR WESTVILLE

W. G. Logan
MAYOR TRENTON

BELL
COLLECTION

144709

Mount Allison
Memorial
Library



PROVOST STREET, LOOKING NORTH, NEW GLASGOW'S MAIN BUSINESS THOROUGHFARE.

Waldree Photo

New Glasgow, Stellarton, Westville and Trenton

Historical.



NO section of Nova Scotia, or for that matter of the Eastern Provinces, is so distinctively industrial as that part of the province the centre of which are New Glasgow, Stellarton, Westville and Trenton, towns which stand as symbols of an industrial development and expansion, during the past forty years as great as that of any section of the Dominion.

The early history of these towns is closely interwoven with that of Pictou County, of which they form such an important part. Born of its early coal and iron discoveries long after Pictou, the first town in the County, with its magnificent harbor had already become a thriving centre of trade and commerce, these towns have forged ahead in industry and population, so that to-day they form an important factor in the coal and iron product producing wealth of the Province, making them known wherever coal and steel products are utilized.

The first French settlers in what is now known as Pictou County, found the country inhabited by the Micmacs, a powerful tribe of Indians whose possessions extended from the Strait of Northumberland

to the Bay of Fundy. For a period of some 150 years the territory was under the control of France. When however the English took possession in 1749, followed by the final treaty of peace, at Paris in 1763, the French settlements made in the country were abandoned, to be followed by English speaking immigrants. The first body of these consisted of six families of about thirty persons from Philadelphia, who made the voyage in the brig "Hope" landing in Pictou Harbor June 10th, 1767, where in the district surrounding it they had obtained a government grant of 180,000 acres of land. By 1769 the settlement had eighty-four white inhabitants. On Sept. 15th, 1773, thirty-three families and twenty-five unmarried men, in all 189 souls, arrived in the ship "Hector" from Scotland. In 1775 thirteen more Scottish families, mostly farmers, joined their countrymen, whose numbers were augmented in 1783, by disbanded British soldiers, mostly Scottish, to whom had been allotted large tracts of land in the country and elsewhere in the Province, by the British government, following the close of the revolutionary war, with the result that the country became dominantly Scotch in character; impressing it with those qualities of intelligence.



VIEW OF FOUR OF NEW GLASGOW'S STREETS. (1) Terrace Street, (2) Abercrombie Street, (3) Temperance Street, (4) High Street.



TOWN HALL AND FIRE DEPARTMENT.
New Glasgow.

Waldren Photo

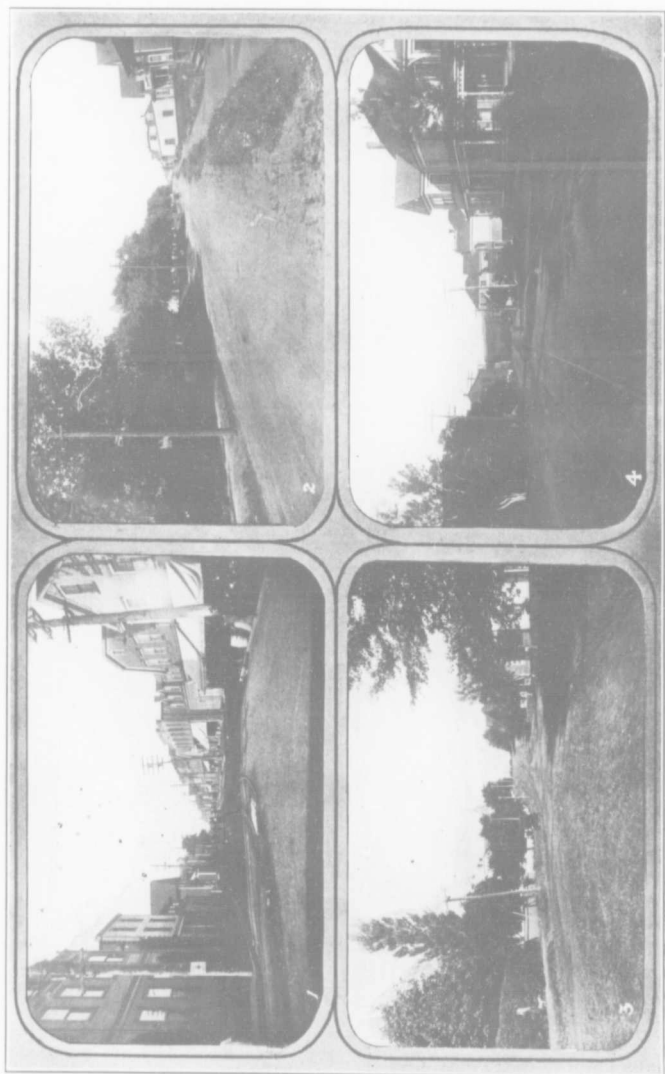
persistence and thrift, such marked characteristics of the Scottish race, and which continues to characterize in the same eminent degree, their descendants who comprise more than 26,000 of the 36,000 population the county had in 1911, and from among whom have come some of the brightest minds of the Province and the Dominion, in the profession, industry and commerce.

NEW GLASGOW.

The new settlers gradually took up land along the East, Middle and West rivers. By 1809 when the land on which New Glasgow is now located was taken up, the county had a population of 5000 people. A Mr. Chisholm and his wife were the first settlers of the future town, but to James Carmichael, who a few years later opened the first store on a lot near that of Chisholm's, must be given the credit of selecting New Glasgow as a business centre. In 1820

two other stores were opened, and following the repeal of the trade restriction, which had hitherto been imposed by the mother country on its colonies, the business of the town rapidly grew. For a period of 45 years, following 1831, until iron ships replaced wooden ones, shipbuilding flourished, and in its yards, ships of 1400 tons burden were constructed.

About this time too, coal mining assumed large proportions. Coal had been discovered in 1798 near where the Albion mines are now located in Stellarton. About 1827 the General Mining Association acquired the lease of all the reserve mines in the Province, and about 1831 operations on a large scale were begun. In 1836 the Company constructed a six mile railroad from the mines to a point a little below New Glasgow—the first railway, built of steel rails, in Canada. With the coal mines only a few miles distant and the



STELLARTON.

Woolf's Photo

(1) Main Street, looking North. (2) McKay Street. (3) Stel'ar Street. (4) Acadia Avenue.

shipyards busy, the town rapidly grew in population and wealth. In 1872 the Hope Iron Works were established with a \$4000 capital and ten employees, destined to become in the next forty-three years the Nova Scotia Steel and Coal Company with \$16,000,000 capital and 7,000 employees, whose steel forging and railway car axle plant (employing more than 2300 people) is located in Trenton adjoining the town limits. The growing industry not only absorbed the surplus labor, thrown out of employment by the decline of wooden ship construction, but also attracted men anxious for work from all parts of the Province. Other industries followed. I. Matheson and Company, already in existence, began to expand. The Standard Clay Products Limited of St. Johns, Que., established a large branch industry near the town. A few years later the Maritime Bridge Company Ltd. was incorporated. It has other industries such as the Canada Tool and Specialty Co., J. W. Cumming & Son, the McNeil Machine & Motor Company, together with wood working factories, jewelry manufacturers, earated water plants, flour and feed mills and printing shops, which combined with the other industries like the Eastern Steel Company and Humphrey's Glass Works located in Trenton, and the coal mines at Stellarton and Westville, has made it not only a factory center, but also the largest retail centre of the district. As an indication of its growth it may be mentioned that the stamps sold from the post office increased from \$7000 to \$27,000 from 1900 to 1915. The town is surrounded

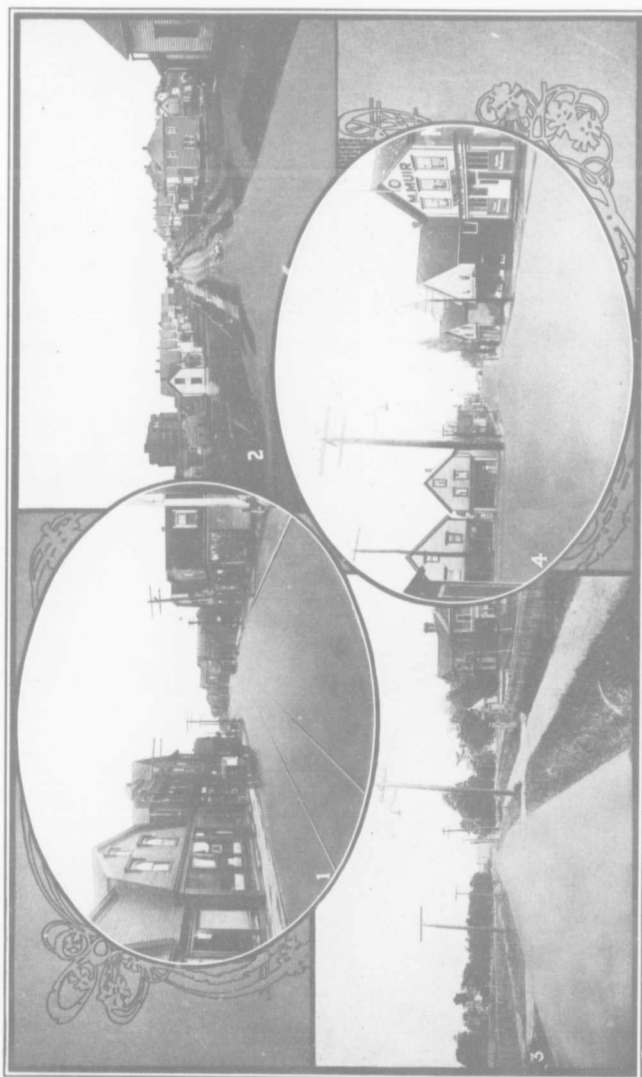
by a prosperous farming community. Situated on the main line of the government railways, it has fine railway transportation facilities. It has an interurban electric car service, which directly connects with the three towns of Stellarton, Westville and Trenton and surrounding country, embracing more than 20,000 people. It has an excellent water service and is well lighted by electricity. It has beautiful streets some of which have permanent pavements, and sidewalks. It has splendid schools, many fine and attractive homes, which, together with its large stores, theatres, park, sporting clubs, and other social organizations, make it not only one of the most active and progressive business centres, but also one of the most attractive residence towns in the Maritime Provinces.

STELLARTON.

Stellarton, attractively situated on the banks of the East river, about three miles from New Glasgow, with which it has both railway and street car connections, was born of the country's coal mining industry, which has played, and still plays an important part in its growth and development.

Following the coal discovery near where the Albion Mines are located, in 1798, and the beginning of coal mining, a village began to grow up, which rapidly expanded with the development of the mining industry (especially after 1831) when the General Mining Association began to mine coal in this district on an extensive scale.

The first houses in the village, as well as its general store, was owned by the coal company. Un-



STREETS, WESTVILLE.

(1) Main Street, looking North, business section. (2) Purvis Avenue. (3) North Main, residence section. (4) Church Street, Looking South.

Waldren Photo

til 1889 the community was known as Albion Mines, when it was incorporated as a town and called Stellarton, to commemorate the discovery of the well-known Stellar Coal which lies under the town and which is so rich in oil that during combustion it emits short bright flames, resembling stars.

The population of Stellarton is at present about 4,600. It is not only the greatest coal mining centre in Pictou county, but also its most important railway centre. The pits and offices of the Acadia Coal Company are located in the town. It is one of the Divisional headquarters of the Government Railway system, with large railway yards, roundhouse and machine shops. At Stellarton connections are made for Pictou from where boat transportation is made to and from Prince Edward Island. The plant, car barns, and offices of the Pictou County Electric Company are located in the town, connecting with Westville, New Glasgow and Trenton. It is the headquarters for the Province of International Harvester Co. It is a fine manufacturing and business centre. Lynchs' Limited of Sydney has a branch factory in the town, while Porter's wood working factory the Pictou County Dairy Co., and the Albion Machine Co., are growing industries.

The town has a splendid water service, and good fire protection. It has fine schools and churches. It has a tuberculosis hospital and the County Infirmary is located just beyond its limits. It has a number of attractive streets, a large park, a band with a Provincial reputation; theatre, social and

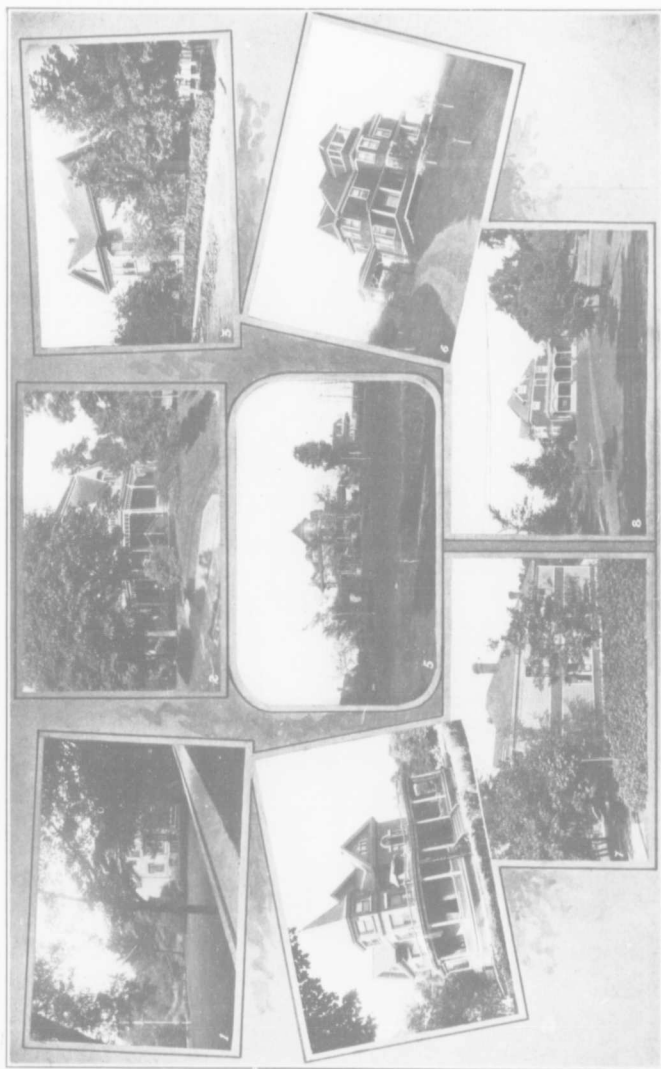
other organizations, making it a pleasant place of residence. It has a large number of fine houses, and offers rare opportunities for moderate priced homes, the efficient railway and street car service, enabling dwellers to reach the large factories at Trenton and New Glasgow easily and at small expense.

WESTVILLE.

Like Stellarton the town of Westville is a child of the coal mining industry in which the greater number of its male inhabitants are employed and on which its population of between 4000 and 5000 are directly and indirectly dependent.

It dates its inception from the coal discoveries in the district about 1864. About this time the Acadia Coal Company began its operations, followed in 1868 by the organization of the Intercolonial which at present is the only mining company in operation near or in the town.

In 1894 it was incorporated. Since then the town has been steadily progressing. Sidewalks and streets have been improved; electric lights have been installed; waterworks constructed, school buildings erected, and other improvements promoted. It has exceptionally good railroad transportation facilities, and electric rail connections with the towns of Stellarton, New Glasgow and Trenton. It has a low rate of taxation. It has good churches, well supported fraternal societies, and other organizations, which, added to its picturesque location, surrounded by a well to do farming community, and unsurpassed natural resources, gives it exceptional advan-



(1) J. H. Sinclair, (2) Alexander McGregor, (3) B. E. Farnoy, (4) Charles Road, (5) Col. Thomas Cantlay, (6) S. G. Muir, (7) H. B. McCulloch, (8) Wm. McIntosh.

MODERN NEW GLASGOW HOMES

Walders Photo

tages as a manufacturing and residential centre.

TRENTON.

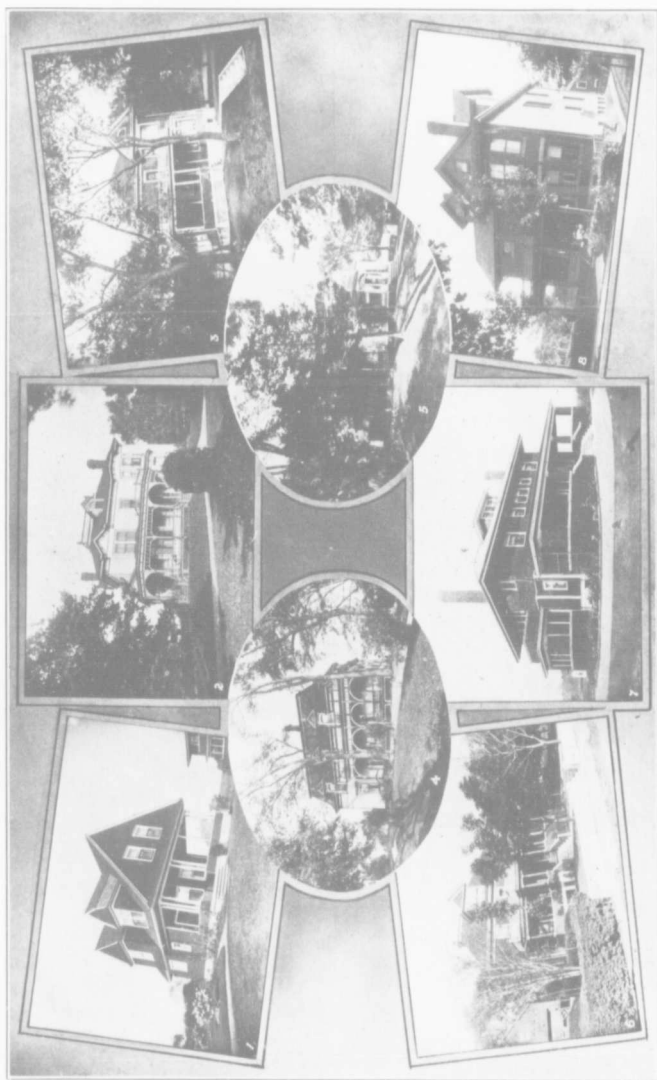
The reorganization of the Hope Iron Works as the Nova Scotia Forge Company in 1878, and its consequent removal to a point about two miles below New Glasgow, formed the nucleus of the future town of Trenton. The Company's growth and its decision to manufacture its own steel in 1882, not only increased the town's importance as a centre of industry, but also gave Trenton the proud title of being "the birthplace of steel in Canada." The further expansion of the industry, with the addition of new ones, brought a constantly increasing number of employees and their families, so that by 1911, the year of its incorporation, it had a population of 1400 which has since been increased to over 3000.

Besides the Nova Scotia Steel and Coal Co. Ltd., and the Eastern Car Co.,—two industries which employ some 4000 persons—Trenton is the home of the Eastern Steel Co. Ltd. and the Humphreys Glass Works, Ltd. which with the new ship building plant soon to be constructed makes it the most important manufacturing section in the district.

Although incorporated only for a period of four years, it has and is working hard to take its place among the well-governed towns of the Province. It has an attractive town hall and commodious school buildings. It has sunk ar-

tesian wells, giving it not only water as pure and clear as may be found anywhere, but a supply sufficient for a town three times its present size. It has constructed a large reservoir and is increasing the length of its water mains and sewers from year to year. The town is lighted by electricity. It has a volunteer fire brigade consisting of thirty-nine men and efficient fire protection. New houses are constantly being built to meet the increasing needs of its expanding population. In fact there is no town in Nova Scotia, where there is more building in proportion to its inhabitants, nor where the demand for houses is as insistent.

Still more far reaching on the future growth of the town will be the completion of the river improvement now under way, connecting it by deep water navigation with Pictou Harbor, and so making it one of the important ocean ports on the Northumberland Strait. The East river channel has been deepened. A turning basin 450 feet wide and twenty one feet at low tide is being dredged, and locks and dam are under construction; improvements costing some \$800,000, and which when completed will make it the head of deep water navigation for all vessels entering Pictou Harbor, to which all the territory extending southward to New Glastow, Stellarton, Westville and further on with its large output of coal, lumber and other products, will be tributary.



Walders Photo

(6) Spurgeon Gammon.

(5) The Misses Carmichael.

(4) P. A. McGregor.

(3) C. S. Trotter.

(2) Es Lent. Gov. J. D. McGregor.

(1) J. W. Grant.

(7) Mrs. Graham Frazer.

(8) R. McGregor, M. P. P.

(6) Spurgeon Gammon.

(5) The Misses Carmichael.

(4) P. A. McGregor.

(3) C. S. Trotter.

(2) Es Lent. Gov. J. D. McGregor.

(1) J. W. Grant.

(7) Mrs. Graham Frazer.

(8) R. McGregor, M. P. P.

(6) Spurgeon Gammon.

(5) The Misses Carmichael.

(4) P. A. McGregor.

(3) C. S. Trotter.

(2) Es Lent. Gov. J. D. McGregor.

(1) J. W. Grant.

(7) Mrs. Graham Frazer.

(8) R. McGregor, M. P. P.

(6) Spurgeon Gammon.

(5) The Misses Carmichael.

(4) P. A. McGregor.

(3) C. S. Trotter.

(2) Es Lent. Gov. J. D. McGregor.

(1) J. W. Grant.

(7) Mrs. Graham Frazer.

(8) R. McGregor, M. P. P.

(6) Spurgeon Gammon.

(5) The Misses Carmichael.

(4) P. A. McGregor.

(3) C. S. Trotter.

(2) Es Lent. Gov. J. D. McGregor.

(1) J. W. Grant.

(7) Mrs. Graham Frazer.

(8) R. McGregor, M. P. P.



NEW GLASGOW'S FIRE WAGON

Waldren Photo

GOVERNMENT AND FINANCE.

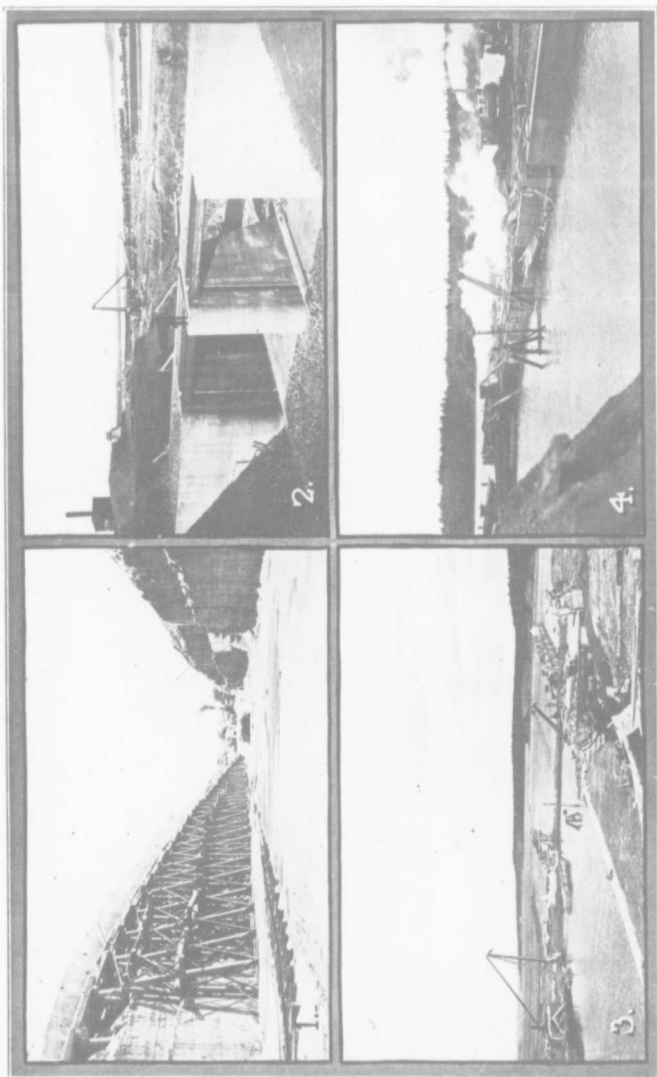
NEW GLASGOW was incorporated as a town in 1875, and is governed by a mayor and six councilmen. The town owns in real estate and other property amounting to \$775,000. The water plant alone is valued at \$366,100. The taxable real estate was valued in 1915 at \$4,083,235,000; the tax rate for 1914 was \$1.85 per \$100, and for 1915 was \$1.70 plus .10 for war tax. The taxes collected in 1914 amounted to \$66,450.04, and those uncollected were \$19,275.73, of which over \$17,000 were collected in 1915, while the total revenue from all sources amounted to \$162,918.48, increasing to \$219,804.30 in 1915. At the end of 1914 it had current assets to the amount of \$52,757.10, and liabilities amounting to \$25,808.33, leaving a balance of \$26,948.77, while in 1915 the current assets were \$92,099.33, and the liabilities \$59,733.11, with a balance of \$32,366.22, figures reveal-

ing an expanding financial growth.

The town's bonded debt is \$673,750, for the payment of which sinking funds amounting so far to \$51,440, have been created, towards which it deposits a sum sufficient annually, and which, with interest, retires the bonds at maturity. Of the bonds, \$366,100 (or more than one-half) must be debited to the waterworks, which are self-supporting, leaving an actual debt of \$307,650 to be paid out of general taxation, a small sum considering the town's present assets and wealth, which in the past eight years has increased in taxable real estate, personal property and incomes, from \$1,759,550, to a total of nearly \$5,000,000, or almost three times the valuation of 1907.

STELLARTON.

Like New Glasgow, Stellarton has a mayor and six councilmen and is well governed. Property values are constantly increasing. The rate of taxation is very low,



VIEWS OF LOCKS IN COURSE OF CONSTRUCTION NEAR TRENTON

(1) Cutting Locks and Erecting the Walls. (2) Spillway. (3) Flooded Locks. (4) Completed Spillway. McDougal Bros., Contractors & Builders.

Walders Photo



PICTOU HARBOR

Waldren Photo

Entrance by which ocean steamers reach Trenton and New Glasgow five to seven miles distant

being \$1.30 per hundred dollars for general, and seventy cents for school purposes. In 1915 the assessed valuation of real estate, personal property and incomes totaled \$1,116,050, an increase of nearly 50 per cent over 1909 and almost 500 per cent over 1900 when the property of the town was assessed at \$237,365. At the same time the estimated value of real estate and personal property owned by the corporation has increased from \$120,000 to \$171,384, the value of the water works alone increasing from \$61,000 to \$83,174, and the school property from \$17,000 to \$40,700.

The town has a debenture debt of \$154,500. Its sinking funds at the close of 1915 amounted to \$17,714.80 to which about 2 per cent are added yearly, which with interest retires the bonds as they become due. Of the bonded debt, however, \$84,000 are water debentures, which are being paid out of

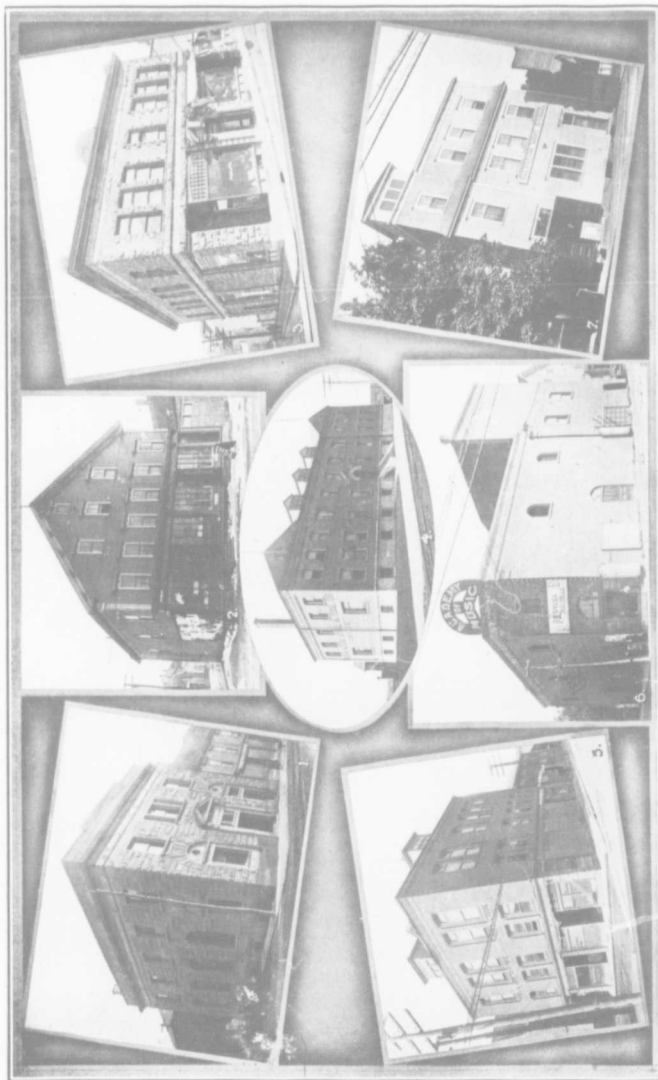
the earnings of the department, the surplus of which amounted in 1915 to \$3266.43 leaving an actual bonded debt of only \$70,500 to be paid out of general taxation, or more than \$100,000 less than the listed property of the town—figures which show that it is in a sound financial condition.

WESTVILLE.

The business of the town of Westville is ably administered by a mayor and six councilmen. The total valuation of real and personal property, with incomes in 1915 was \$1,029,900, while exemptions amounted to \$32,300.

The rate of taxation for 1915 was 1.50 per \$100. for general and school purposes. The receipts of the town from all sources during 1915 were \$97,041.84, out of which all expenses have been met, with a small amount to its credit.

The town's total assets in 1915 were valued at \$125,460.45, against which it had a bonded debt of



Public Buildings, New Glasgow. (1) Bank of Nova Scotia. (2) Federation Labor Hall. (3) Chamber's Block; Philip, tailor. (4) Office of the Nova Scotia Steel & Coal Co. Ltd. (5) Y. M. C. A. Building. (6) Bank of Nova Scotia. (7) Federation Labor Hall.

Walden Photo



POST OFFICE, NEW GLASGOW

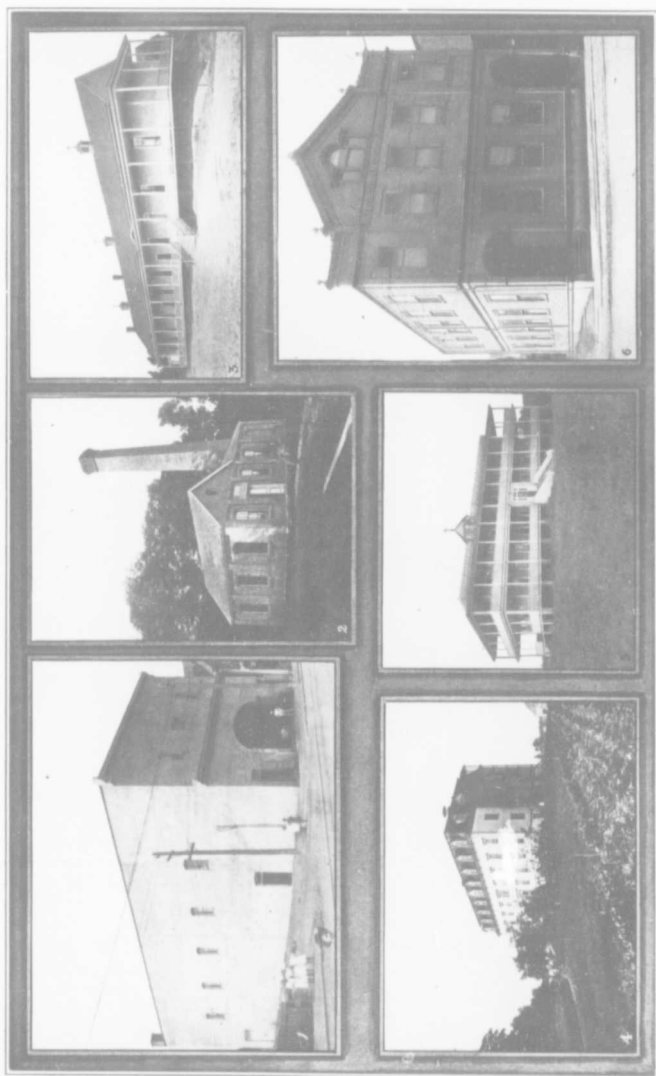
\$88,500, and for the payment of which the sinking funds are so far \$10,135.49, and to which two per cent is added yearly to pay the bonds at maturity. Of the debenture debt \$71,000.00 are charged to water works and sewerage, the interest of which is paid out of the earnings of the department.

TRENTON.

With the incorporation extending back only to 1911, Trenton has a short government and financial history. It has a mayor and six councilmen. Its property was valued in 1915 at \$1,171,515 and its tax rate is \$2.50 per one hundred dollars. While this rate seems somewhat high, it is necessary because property is assessed at about 25 per cent of its real value. The

total taxes for 1915 amounted to \$18,744.65. Its total receipts, including sewer, water and school bonds, were \$52,452.73 as against \$46,427.17 in 1914 \$23,284.68 total receipts in 1913 and \$12,290.73 in 1912.

The town has issued debentures amounting to \$70,000. Of this amount \$45,000 are water debentures. The School bonds so far amount to \$5,000, and \$20,000 has been appropriated for sewer construction, while \$30,000, has been authorized to pave Main Street. Its water works, sewers, school buildings and other property, both real and personal are valued at about \$88,172.68 a magnificent showing for a town not five years old, and which started in business with a debt of \$500.00.



(1) Jubilee Theatre. (2) Pumping Station. (3) Catholic School, Lourdes. (4) County Infirmary. (5) Tuberculosis Hospital, Lourdes. (6) Y. M. C. A. Building. Waldren Photo.



STELLARTON PUBLIC PARK.

Waldren Photo

PUBLIC IMPROVEMENTS.



NEW GLASGOW has a gravity water system installed in 1912, previous to which date it had a pumping system. The water comes from Forbes' Lake, fed by mountain streams and brooks about six miles distant. The lake holds about 300,000,000 gallons of water which is drained to a reservoir with a capacity of 2,500,000 gallons, from where a 100 pound pressure is exerted on the town's lower levels. The main line from Forbes' Lake to the reservoir is 22 inches in diameter and has a length of four miles, while the service mains are 6 to 12 inches in diameter, and comprise a total length of more than 21 miles.

Water rates are very low, and factories are granted special rates. The fire brigade has 48 men. Connected also with the department are five hose houses including the one located in Parkdale where the

Clay Products industry is situated. The equipment consists of four horses, a combination hose, ladder and chemical wagon for three horses, a hand chemical engine, fire engine and hand hook and ladder wagon. Each hose house has a reel and 500 feet of hose, and three of the hose houses have toboggans with 500 feet of canvas hose each, for use during very cold weather. An up-to-date fire alarm system, connects with the houses of the firemen, each of which have electric tappers, in charge of one permanent man during the day time and two at night.

To further guard against fires, the town has a brick district, extending from the river to Temperance Street, and from Marsh street on the south to George street to the north.

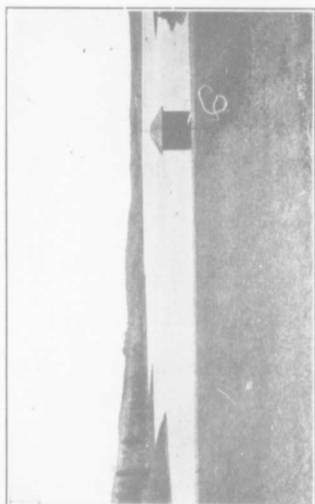
New Glasgow has about 15 miles of sewer pipes of vitrified clay, draining all sewerage into the East



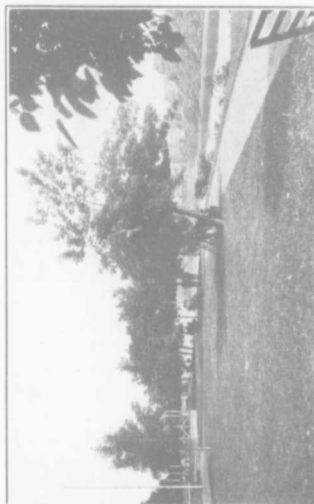
RESERVOIR - TRENTON.



A HEAVY CATCH OF TROUT, BY A. B. GRAY, NEW GLASGOW.



RESERVOIR, FORBES LAKE, NEW GLASGOW



PARK ALONG EAST RIVER, NEW GLASGOW.

river from where it is carried by the tide to the Strait of Northumberland and on to the ocean.

The town embraces an area of four square miles and has about thirty miles of streets, 9000 square yards of which have Bithulithic pavements, and $3\frac{1}{2}$ miles of concrete sidewalks. It has five police constables including the chief, and a railroad policeman, and is remarkably free from petty crimes and misdemeanors.

STELLARTON.

The water works is one of Stellarton's most valuable assets. It was established in 1892. The water taken from the East river after being filtered is pumped to a reservoir which has a capacity of 1,000,000 gallons, about one mile from the centre of the town, the pumps being able to supply 1,750,000 gallons daily. From the reservoir the force of gravity carries the water to the homes and business houses, to which is added a direct pressure of 60 pounds on the higher and 90 on the lower levels in case of fire. The town has at present 42,240 feet, or eight miles of water mains extending to all sections of the corporation, including Lourdes near the Allan Shaft.

The town fire equipment consists of one horse, a hose waggon with 2400 feet of hose, 65 hydrants. The brigade consists of 46 men, whose efficient service has placed the town in a first class position on the books of fire underwriters.

The town has between three and four miles of sewers, valued in 1914 at \$19,000, draining all sewerage into the East river, the tidal waters of which carry it to the Strait of Northumberland.

The streets embracing some twenty miles are well graded and are well lighted, a contract having been entered into during 1914 with the Acadia Coal Co. Ltd. to supply electricity for a term of five years at the rate of \$4.00 per light including 60 lights free of charge.

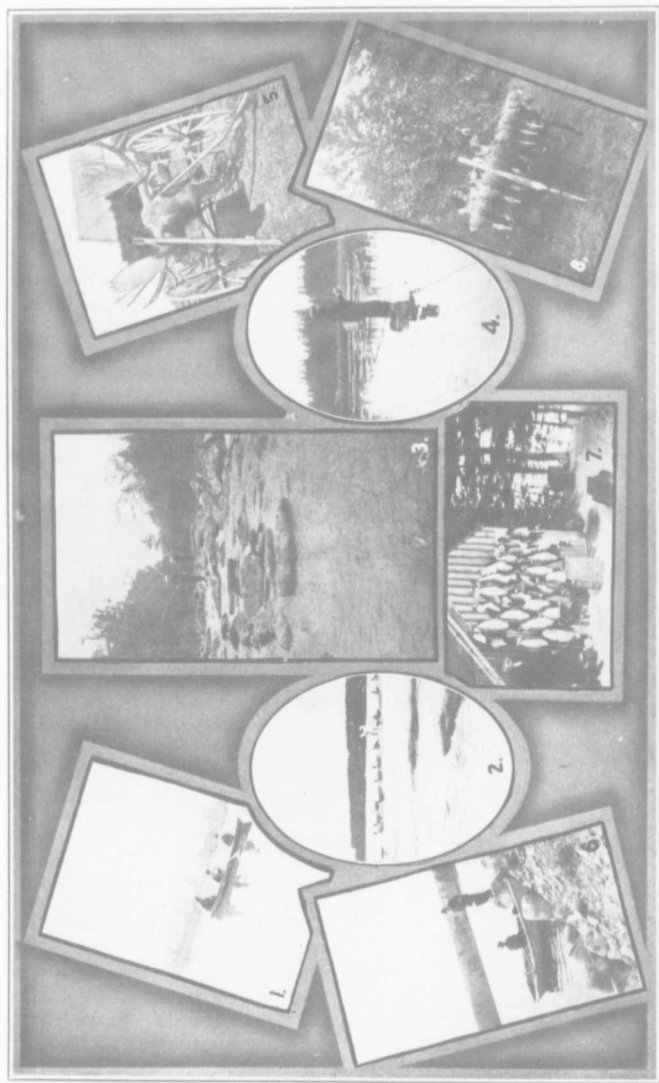
The town has good police protection and petty crimes are rare.

WESTVILLE.

Westville's water supply comes from the Middle River, one and one-fourth miles distant. It is filtered and pumped by a direct pressure system through the mains to stores and dwellings, the residue going to a reservoir having a capacity of 2,750,000 gallons. The water pressure exceeds 100 pounds to the square inch, whether from the pumps direct or from the reservoir in return. The town has about 14 miles of water mains. The fire brigade controls three reels and 1800 feet of hose and it composed of twenty-five men. The streets are being gradually graded and sidewalks are being laid. Part of the business section has concrete walks, and electric light has been brought in, while other improvements are being carried out by an efficient and progressive town government.

TRENTON.

Two artesian wells each 300 feet deep supply Trenton with the purest water. In 1914 a reservoir with a capacity of 1,000,000 gallons and a pressure of 100 lbs., situated at a point 300 feet above the lower levels of the town, was completed, a pump and motor installed, and two miles of water mains laid down, the latter having been increased



SPORTING SCENES.

1. Culture Mince, early morning, Little Chatham, River. 2. Shooting Game over dam. 3. Middle Rocky Lake. 4. Trout Fishing. 5. Culture Mince, early morning, Little Chatham, River. 6. Middle Rocky Lake. 7. Trout Fishing.

Walden Photo

to 3 miles during 1915; on which has been expended so far about \$45,000. The water service has already been installed in some 60 stores and dwellings, and 20 hydrants have been conveniently placed, so as to utilize the water efficiently in case of fire.

The town has a fire brigade composed of 39 men. It owns three reels and 1500 feet of hose. In 1914 sewer construction was begun and it has at present some 1½ miles

of sewers. Logan's Park presented to the town by A. T. Logan comprises seven acres. The town is lighted by electricity. The streets are being gradually graded and sidewalks are being laid, and a mile of concrete pavement on Main street is to be constructed at a cost of nearly \$40,000 during the coming summer so as to give it as far as possible all the conveniences of a well governed and progressive municipality.

SCHOOLS.

NEW GLASGOW has six public school buildings, five of which are used for school purposes, employing 27 teachers.

The course of studies from the primary grade through the High School embraces twelve grades, in addition to instruction in manual training and domestic science, from the fifth to the ninth grades inclusive. The High School studies embrace grades nine, ten, eleven and twelve, passing which admits scholars to the Sophomore year of any of the Provincial Colleges.

The Catholics also support a separate school known as St. John's Academy, which has five teachers, and about 300 pupils. The course of studies embrace eleven grades, following which, if pupils wish to go on with their studies, they may attend the High School, to carry on work in the 12th grade.

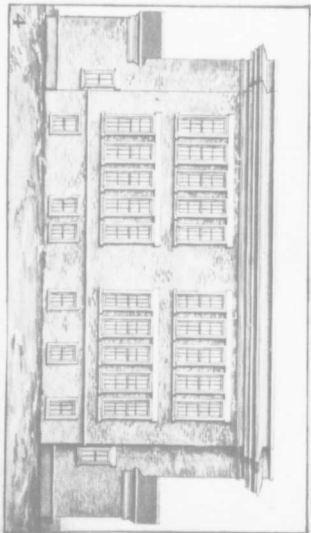
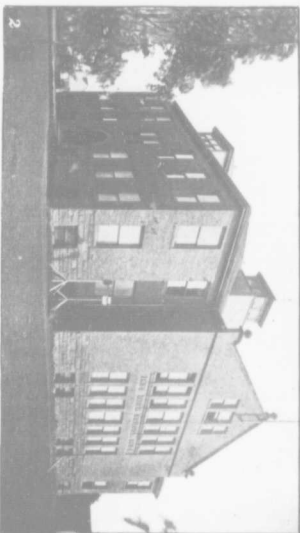
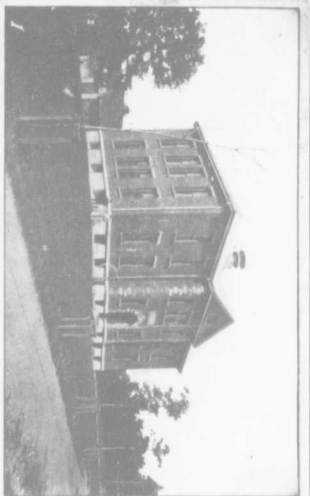
STELLARTON.

Following incorporation of Stellarton in 1889, the different school sections of the town were merged and a central school built in 1899. In 1914 another brick school build-

ing was erected. The teaching staff comprises thirteen members, including the principal. In 1915 about 822 scholars attended school including the Catholic school at Lourdes which has three teachers. The course of studies embraces eleven grades, including primary, intermediate and high school instruction, graduation from the latter admitting scholars to the Freshmen year at any of the Provincial colleges.

WESTVILLE.

The Schools of Westville are well attended, the total enrolment for 1914-15 being 1039 pupils. It has three school buildings, the central one being constructed of brick and modernly equipped. The schools have sixteen teachers and are divided into eleven grades, extending to the high school, graduates from which may enter the Freshman year of any of the Provincial colleges, without further examination. Connected with the school is a domestic science department attended by girl pupils from the sixth to the eleventh grade inclusive.



11. Beacon School

12. Main School

13. West Side School

14. St. John's Catholic School

NEW GLASGOW SCHOOLS

Walter P. Mac

TRENTON.

Immediately following incorporation in 1911 the schools of Trenton were graded and placed under a competent principal who has under him at present six teachers. The town has three school buildings, attended in 1915 by 377 pupils, the

largest attendance of any year since incorporation, while this year the attendance is expected to be much greater. The course of studies extends from the primary through the ninth grade, to which a tenth grade will be added probably the coming school year.

CHURCHES.

Of the thirty-six thousand population of Pictou County, according to the census of 1911, 24,000 were members of the Presbyterian churches, leaving a 12,000 membership to the other denominations, 5600 of whom were Catholics. All the settlers who arrived in the "Hope" and "Hector" were Presbyterians, with the exception of one Catholic man on the former, and one family, of the same faith on the latter.

The Presbyterians built a church near Loch Broom and one in New Glasgow near the old Duff cemetery, following the coming of Rev. James D. McGregor, the first regularly established minister in Pictou County. For nine years Rev. McGregor was the only Presbyterian minister in this section of the Province. In 1803 the log church near New Glasgow was replaced by a new one in Irishtown (now Plymouth). In 1834 James church was incorporated in honor of Rev. now Dr. McGregor, and in 1852 a church building was erected in the limits of New Glasgow.

In 1907 the new St. Andrew's Congregation organized in 1888, was united with James Church and the congregation was called the First Presbyterian church, followed by the dedication on April 12, 1914, of the beautiful brick

structure in which they worship at present.

In 1845 Free Church adherents built Knox Church. In 1874 they were joined by the Primitive Congregation—an off shoot of James congregation organized the same year as the former—and in 1876 they built the church in which they worship today, now known as the United church.

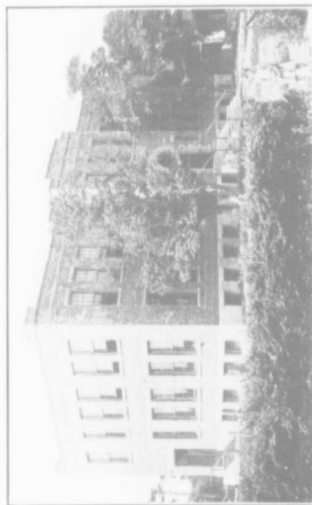
St. Andrew's Congregation (known as the Kirk) was originally a wing of the McLellan Mountain church. During 1817 a church was built at Frasers Mountain about two miles from New Glasgow. About 1837 the congregation divided, and St. Andrew's of New Glasgow was formed, and a church erected which in 1856 was replaced by the present one, the congregation having at present about 430 communicants and 1300 adherents.

Next to the Presbyterians the strongest church body in the county are the Catholics who built their first church in 1810 at Merigomish. In 1885 the New Glasgow church known as St. John the Baptist, was erected. It is located along the street car line leading to Trenton, for the Catholics of which town it also serves as a place of worship. The congregation which numbers about 1000 communicants also

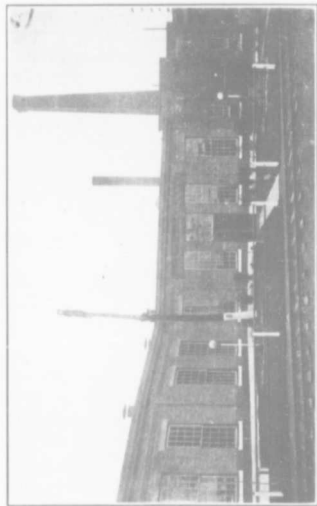
STELLARTON BUILDINGS AND ORGANIZATIONS



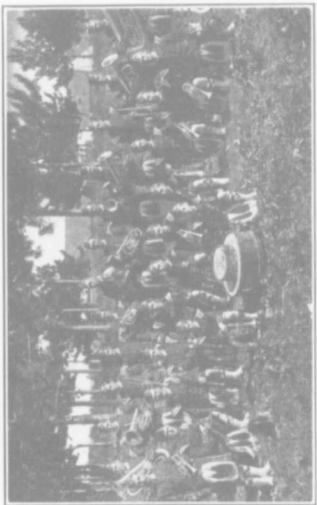
HIGH SCHOOL—STELLARTON.



PARK STREET SCHOOL—STELLARTON.



GOVERNMENT RAILWAYS, ROUND HOUSE, STELLARTON.

THE 78th HIGHLAND REGIMENT BAND
Drum Major—Band Master, W. D. McLeod, Treasurer, Stellarton. The greater



VIEW OF ABERDEEN HOSPITAL, NEW GLASGOW.

conduct a Parish school attended by 300 pupils, who are taught by the Sisters of Charity and whose convent is located on the church property.

The Church of England was first established in the county in 1826 in Pictou, from where as a centre the other churches in the county were served. In 1852 the part of the county including New Glasgow and Albion Mines was constituted a separate parish, and in 1888 St. George's Church in which the congregation worships, was erected.

The first Baptist society in the county was organized in 1911 followed by the formation of the regular Baptists in 1838. By 1875 they had a membership large enough to erect the church in which they worship at present, and it now has the largest membership in the county.

The history of the Methodists in the county virtually began with

the opening of the coal mines in 1798. New Glasgow was a part of the Stellarton Mission, until 1888, service being held in the former town early in the sixties. During the pastorate of Rev. Isaac Thurlow the old Free church property was purchased and remodelled into the church, where the congregation numbering some 200 communicants, with a Sunday school of 300 pupils, worship at present.

STELLARTON.

Stellarton has five churches: St. John's Presbyterian, an offshoot of St. Andrew's church, New Glasgow, was dedicated in 1863. Sharon Presbyterian church is a child of James Church, New Glasgow. The original building was erected on the banks of the East river, about 1856, and 1889 its present attractive structure was dedicated.

Our Lady of Lourdes Roman Catholic church located at Lourdes, near the Albion Mines, was built in 1875 under the direction of the

WESTVILLE BUILDINGS.



HIGH SCHOOL, WESTVILLE.



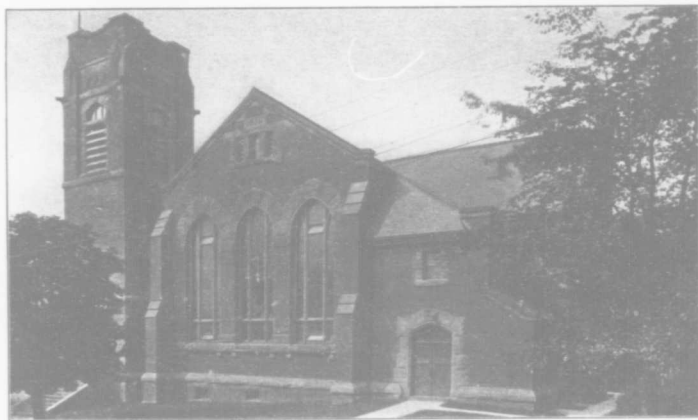
POST OFFICE, WESTVILLE.



GOVERNMENT RAILWAY STATION, WESTVILLE.

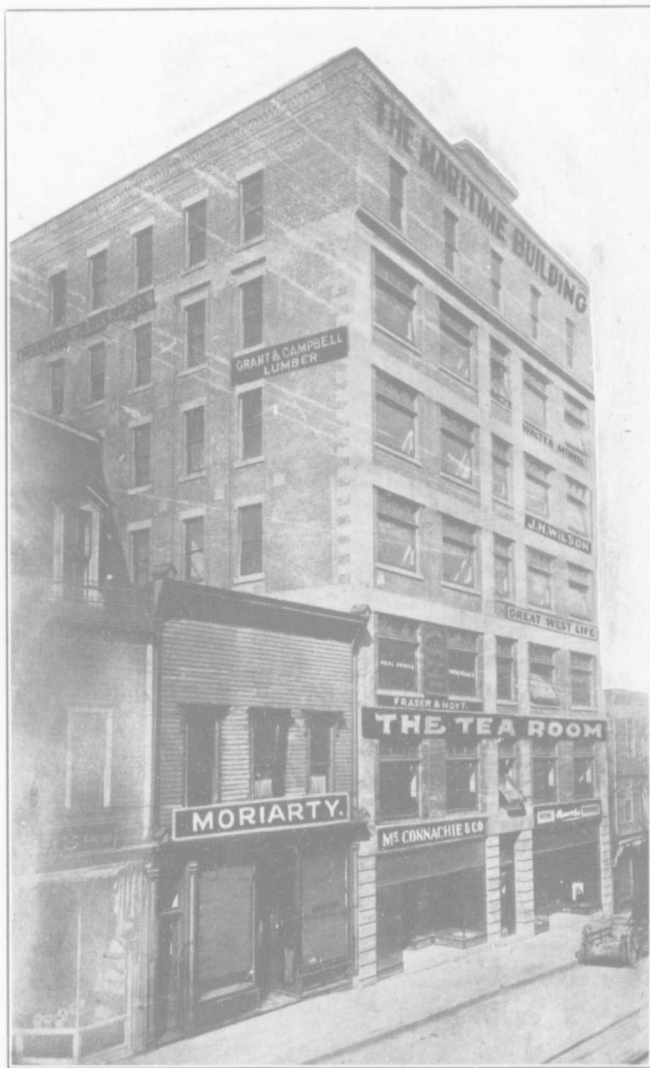


INTERCOLONIAL COAL CO., OFFICE AND MINE, WESTVILLE.



FIRST PRESBYTERIAN CHURCH, NEW GLASGOW, N. S.

NOVA SCOTIA'S INDUSTRIAL CENTRE



THE MARITIME BUILDING, NEW GLASGOW'S SKY SCRAPER. *Waldren Photo*
Illustration shows Moriarty, Clothing & Furnishings; McConnachie & Co., Dry Goods; Ross & Co., Clothing & Furnishings; Tea Room; Fraser & Hoyt, Real Estate Brokers; Great West Life Insurance Co.; Grant & Campbell, Lumber; J. H. Wilson, Insurance; Maritime Jewelry Co.; Walter McNeil.

present pastor Rev. W. B. McDonald. Connected with it is a tuberculosis hospital, Convent and school, the latter being attended by the Catholic children of the parish.

Christ Church, Anglican, was built in 1851, altho services were held as early as 1826, when the settlement was known as Albion Mines. About the same time too, Methodists living near the mines were visited by itinerant preachers. By 1845 they had increased sufficiently in numbers to have a regular pastor and in 1861 the congregation erected the building in which they worship at the present.

WESTVILLE AND TRENTON.

St. Phillips Presbyterian Church at Westville was opened for service in January, 1871. In 1907 the corner stone for the present attractive building was laid, which is none too large to meet the needs of the congregation comprising at present some 350 communicants and 1300 adherents.

The first building of the Carmel

Presbyterian church was erected in 1870, but while the dedication services were in progress it caught fire and burned to the ground. Work on a new building was at once begun and completed in 1873. This served the congregation as a church home until 1913 when it was remodelled, the congregation in the meantime having grown to 320 communicants and 1200 adherents.

The Church of the Immaculate Conception, Roman Catholic, located in Westville with the coming of the first miners, has 875 communicants.

St. Bees, Anglican, was made a separate parish in 1897, and the Methodist church is the centre of a flourishing congregation.

Of its three churches in Trenton, the First Presbyterian was organized in 1889 and a church building erected in 1890. The Methodists have had a congregation in Trenton since 1893, and the present church, was dedicated in 1914, in which year also the Anglicans established a mission in the town.

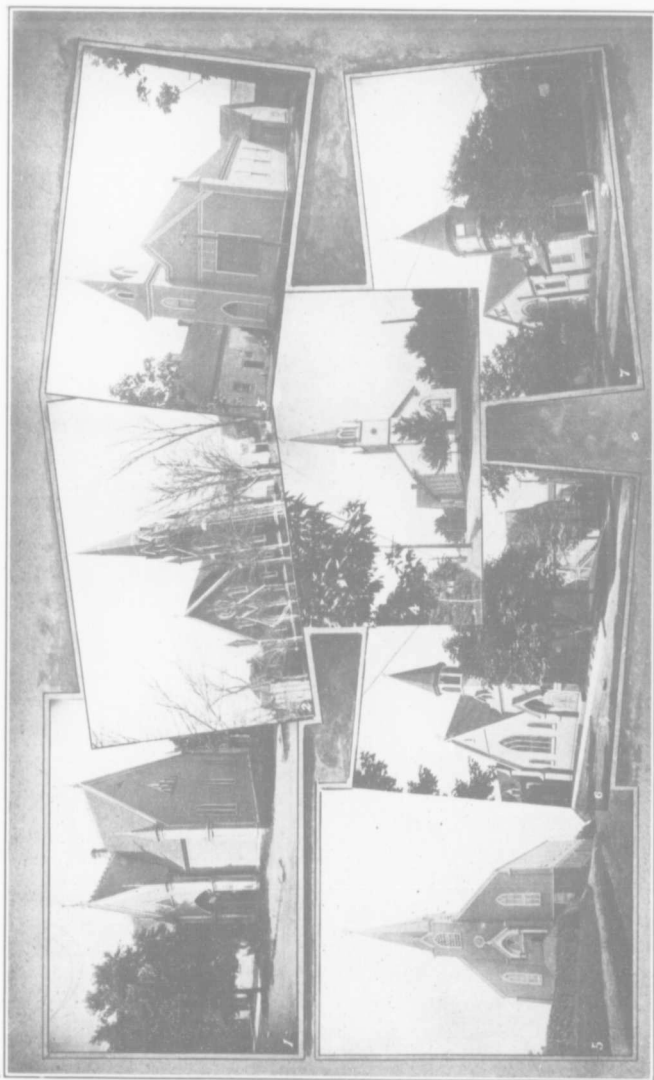
HOSPITALS, SOCIETIES, HEALTH, SPORTS.

Aberdeen Hospital located in New Glasgow and supported by the towns of New Glasgow, Stelarton, Trenton, and Westville, was first opened to patients in 1897. The first building was erected at a cost of \$15,000, and had eight beds. In 1906 a second wing was added with twenty two more beds at a cost of \$18,563.34. In 1914 a third addition was made, for ten more beds, a modernly equipped operating room and a concrete contagious annex, at a cost of \$35,000. The total cost of the

hospital as it stands today, represents an outlay of nearly \$75,000, all raised by voluntary contributions.

The medical staff consists of one consulting and eighteen acting physicians, two of whom are surgeon dentists and one an oculist and aurist, while the nursing staff is composed of the superintendent, assistant superintendent, night superintendent, operating room nurse, and ten to twelve pupil nurses.

To show what a need the hospital fills, it may be mentioned that fol-



NEW GLASGOW CHURCHES.

(1) First Methodist. (2) United Presbyterian. (3) Baptist. (4) St. Andrew's (R.C.). (5) St. John the Baptist, Roman Catholic.

Walders Photo.

lowing the first year of its existence it had 3292 hospital days, and treated 122 patients, at a cost of \$2,836.52. The work constantly expanded and during 1914 the number of hospital days had increased to 7510, while the patients treated numbered 385, and the expenses were \$14,000, with a greater increase anticipated this and the coming years..

New Glasgow has an active Y. M. C. A. It owns the building in which it is located. It and the Salvation Army Barracks are fine structures, the former built of stone and the latter of wood, while the Catholic Sisters of Charity have a convent building and conduct the school in connection with St. John Baptist Roman Catholic church.

The town has an attractive park on the west side facing the river front. It has an active and energetic Board of Trade composed of the town's leading business and professional men. It has a theater, moving picture houses, a large number of secret societies, clubs and other organizations, all of which make its intellectual and social life profitable and pleasant.

STELLARTON.

The County Infirmary is a large building and is located on the outskirts of Stellarton. Our Lady of Lourdes Tuberculosis Hospital founded by the Catholic Sisters of Charity in 1912, is beautifully situated on an eminence on the Catholic church property at Lourdes.

The town has a fine park. The Business Mens' Association is an active organization. It is the home of the 78th regiment band, which is the only band in the four towns.

Stellarton has A Young Mens' Christian Association, building. It has a large theatre. The Masonic and Odd Fellows Orange C. M. B. A. lodges own large halls, and other secret societies have lodges in the town.

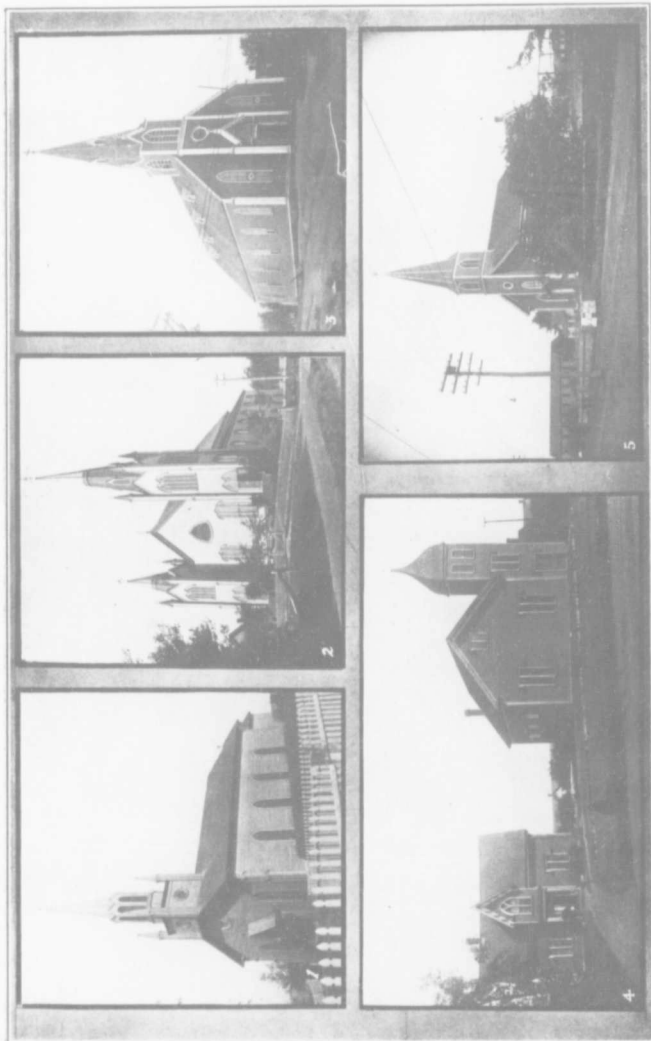
WESTVILLE AND TRENTON.

In Westville the Masonic, Knights of Pythias, C. M. B. A., Odd Fellows and Orange Orders have attracted halls. The town has a Salvation Army Barracks, moving picture house, fine post office, railway and bank buildings. Trenton also has a moving picture house, secret orders, social and other organizations, the Orange Order, Sons of Temperance and Masonic, the two former having halls of their own, all of which add their quota toward making the social life in these towns pleasant and profitable.

HEALTH AND SPORTS.

The public health of the towns are carefully guarded by energetic health officers, and sanitary rules are generally well observed. Contagious diseases are closely followed; patients are isolated and houses are disinfected. Leaflets of instruction, prepared by the provincial health officer are sent to the homes, and every intelligent effort is made to instruct people as to the fly nuisance, the disposal of garbage and other sanitary measures, while good hygienic school conditions are insisted upon, to make the community as healthy as possible.

New Glasgow also has a competent food inspector, with power to visit all dairies and slaughter houses, which supply meat and



STELLARTON CHURCHES.

1. Christ Church, Anglican, (St. James' Presbyterian). 2. Our Lady of Lourdes, Roman Catholic. 3. Methodist. 4. St. John's Presbyterian. 5. Wesleyan. 6. Baptist.

Walden Photo.

milk, and to stop the sale of these articles if the places are not kept clean and sanitary, with the result that children's diseases are on the decline, and the general health of the population has been greatly improved.

The towns have curling, hockey baseball, fishing and other sporting clubs. The country round about has many beautiful drives. The scenery along the East River is charming and the roads leading to the strait shore offer to tourist a varied view of upland, hill and dale, not surpassed anywhere. Not far away also is Pictou Harbor, Pictou Landing and other resorts, where a large number of the population have cottages, or go for an outing during the summer months.

From any of the towns the

hunting and fishing resorts are easily reached, and fishing tackle, camping equipments and supplies may be purchased at a very moderate price. The district known as Sheet Harbour woods embracing seven mile, ten mile, twelve and fifteen mile streams, with numerous other lakes and rivers abound in moose and deer, salmon, trout and other game and fish. Kelly, and Little Liscombe Lakes, Big Brook, Big Rocky River and other streams, also are rich in trout and other fish. The Garden of Eden settlement, not far distant, is a center from where is reached a territory abounding in wild ducks and geese, while partridge, plover, and other small games, in addition to mink, otter and foxes offer shooting in season, not only to many local sportsmen, but also to others coming from distant towns and cities

TRANSPORTATION.

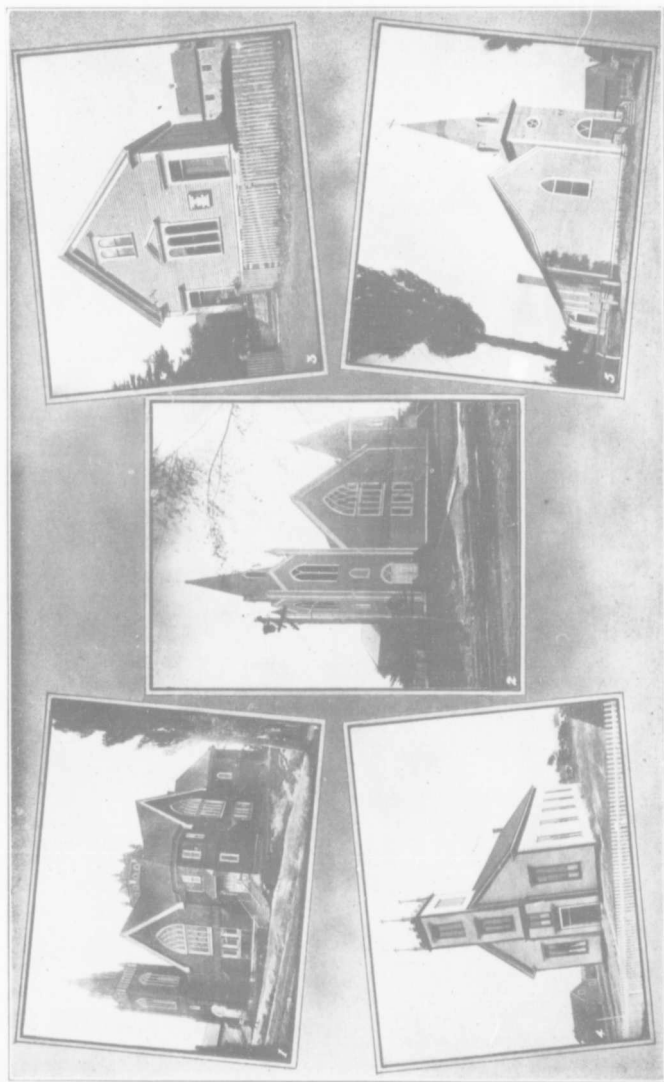
THE heart of the transportation system for this section of Nova Scotia is located at Stellarton one of the divisional headquarters of the Government Railway System. While the dispatchers and superintendent's offices, and staff are at New Glasgow, the round house, machine shops and railroad yards are situated in the former town. The yards cover some fifteen acres. The round house with 26 stalls has a green grass plot, with flower beds, facing the railway tracks, and is maintained by the employees. The machine shops are modernly equipped. The yards have an up-to-date system of fire protection independent of the town, while the electric light plant also supplies

light for the offices and yards, both at New Glasgow and Westville. The yards employ 125 men, who with some 30 resident engineers and firemen, receive in wages over \$120,000 yearly, not counting at the staff at New Glasgow and agents at Westville and Trenton who draw an additional \$40,000.

Trains for New Glasgow, Westville, Trenton, Sunnybrae and other points east are made up in the Stellarton yards, the service utilizing about 48,000 tons of coal per year and 200,000 gallons of water per day. Connected with the yard is an auxiliary wrecking equipment to points as far west as Oxford and Mulgrave, and to the Sydneys on the east end of the line.

Some thirteen passenger trains

Copyright, 1914, by the Government of Nova Scotia, Halifax, N.S.



WESTVILLE CHURCHES.

(1) St. Philip's Protestant. (2) Carmel Protestant.

(3) St. Bernard's

(4) St. Michael's

(5) Immaculate Conception.

Walden Photo

(5) St. Bern., Anglican.



GOVERNMENT RAILWAY STATION, STELLARTON.

Waldren Photo

leave Stellarton every 24 hours, exclusive of through passenger trains and through freight trains, and about 800 engines are dispatched from the yards monthly. Passengers from Halifax and other points, change cars at Stellarton to and from Pictou and Prince Edward Island. About 17 to 20 trains besides freight trains, run through New Glasgow daily, the branch to Pictou Landing passing through Trenton while the main line goes to the Sidneys, thus linking the four towns with their numerous branches, with the whole Government Railway system, and so connecting it with all the big cities of the continent, and the Dominion's ocean ports east, and west.

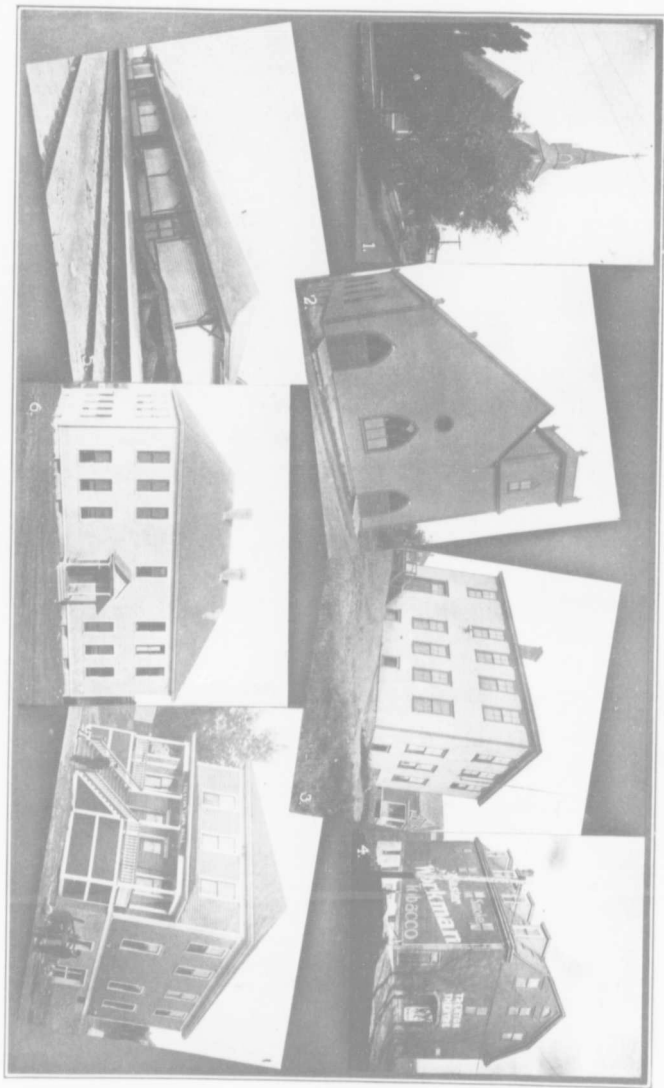
WATER TRANSPORTATION.

The East river connects the district with Pictou Harbor, located on Northumberland Strait, about six miles distant, one of the finest deep water harbors on the East-

ern Canadian Coast, and capable of holding the largest ocean vessels. The East river as far as Trenton has already been dredged to a depth of 21 feet, with a turning basin 450 feet wide near where the plant of the Nova Scotia Steel and Coal Company is located. A lock 638 feet long, 55 feet wide and 32 feet deep with four sets of gates to allow for the entrance of both large and small vessels are in course of construction. The work is being executed by McDougall Brothers a well known contracting firm of Ottawa, and when completed will give the district of which these towns are the life and centre, ocean water connections with all parts of the world.

STREET CAR SERVICE.

The four towns are also connected by a street car line owned and operated by the Pictou County Electric Company Limited, whose head offices and power plant are located in Stellarton, from which



(1) Presbyterian Church. (2) Methodist Church.

CHURCHES, SCHOOLS, PUBLIC BUILDINGS, TRENTON.

(3) Public School Building. (4) Tremont Theatre. (5) Government Railway Depot. (6) Public School Building.

Walter P. ...



RAILWAY STATION, NEW GLASGOW.

Waldren Photo

point both the street car and electric light service is controlled. The Company which employs about 65 people who receive in wages some \$55,000 yearly, has about nine and a half miles of tracks extending from Westville to Trenton, including Stellarton, New Glasgow and Parkdale, a suburb of the latter town.

The cars between New Glasgow and Trenton run every twenty minutes while those between Trenton and Stellarton run on a thirty minute and the cars to Westville on a sixty and thirty minute schedule.

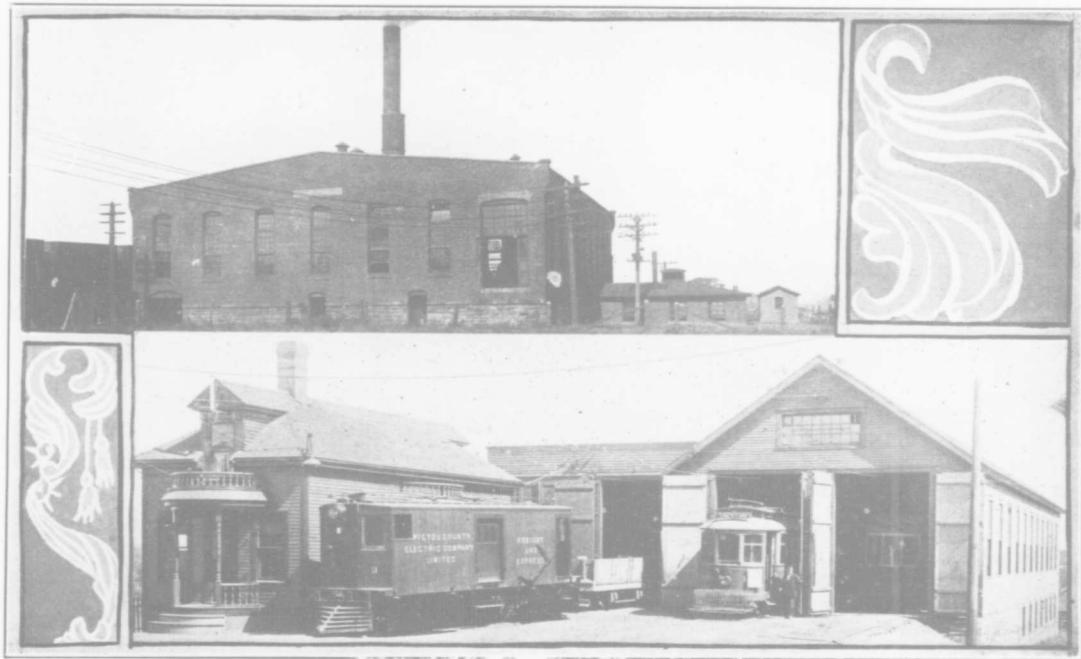
The company furnishes the electric light for public and private purposes for New Glasgow, Trenton and Westville, and private lighting for Stellarton.

The prices to the towns for lighting the streets and public buildings are \$55.00 per arc light, and \$11.00 per year for incandescent lights, while to private subscribers the price is 15 cents per kilowatt, with a discount of 16 2-3 to 33 per cent. off, based on the amount used and the payment of the electric light bills before the 10th of each month.

NATURAL RESOURCES.

One of the greatest factors to make New Glasgow and the towns surrounding it, the important centres they have become, is Pictou County's supply of coal, as well as iron, limestone and other mineral products. The coal measures are located largely along the whole front of the county, divided by the

Great Conglomerate, south of which in the basin of the East river, and its extensions both eastward and westward, all the valuable coal deposits so far have been found. Of these the most important is the one known as the "Big seam" or main seam which has a vertical thickness of forty seven feet eight



PICTOU COUNTY ELECTRIC COMPANY LIMITED.
Views of Office, Car Barn and Power House, Stellarton.

Waldren, Photo

inches. The cage seam is located about 150 feet below the main seam. The McGregor seam lies 165 feet below the third seam; 240 feet under the McGregor seam is found the Stellar seam. Below the McGregor also, was found lately a seam 21 feet, and below it another some five feet in thickness. The coal district embracing an area of twenty square miles, has other seams all of them productive, which with those mentioned have an almost inexhaustible supply of coal and mined at the rate of 1,000,000 tons annually, will be active for hundreds of years to come.

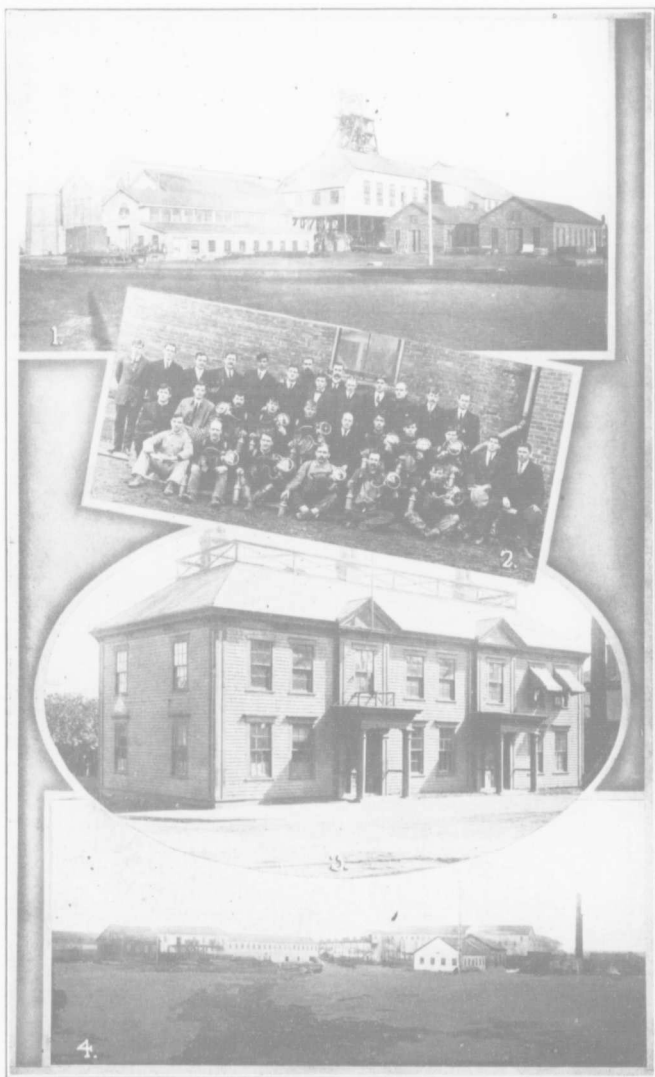
Coal was discovered in the county in 1798, by Dr. McGregor. In 1807 John McKay obtained a license to dig it for export as well as to sell locally. He with his father began mining a three foot seam on the farm of the latter. It becoming exhausted, they searched further and discovered what has since become known as the "Big Seam." As the demand for coal grew, the business expanded. During 1815 some 650 Caldrons, (975 tons) were exported and in 1818, 2820 Caldrons or about 4230 tons were raised. In 1825, the Home Government leased all the reserved mines of Nova Scotia for a period of sixty years to the Duke of York, from whom it passed to Messrs. Rundell Bridge and Rundell, and who in turn with others organized the General Mining Association, which for a period of 47 years played a very active part in the industrial development of the Province.

With the acquisition of the mines by the General Mining Association, coal mining operations began

on a much larger scale. In 1827 the company began sinking new shafts, and equipped them with more modern machinery. On Sept. 6th they raised their first coal, and by December they had a steam engine in operation, the first erected in the Province.

In order to market the coal more advantageously, the company constructed a railway from the mines to a point a little below New Glasgow, on which the cars were drawn by horses. From this point the coal was conveyed by lighters to the Loading Ground at the mouth of the river, where the ocean vessels were loaded. In the meantime railroad locomotion having proved successful in England, the company decided to build a steam road from the mines to the Loading Ground. Construction work was begun in 1839. It was six miles long and was the first steam railroad in Canada, the cost of construction being about \$160,000.

With the completion of the railroad the company greatly extended its operations. A pit was sunk to a depth of 400 feet, the mining operations covering about 40 acres. Farther towards the dip, the "Old Bye" and Dalhousie Pits" were sunk, to be followed by the "Foster," "Cage" and "Foord" pits, all of which with the exception of the two latter were abandoned before 1872, the year in which the General Mining Association sold all its rights in Pictou County to the Halifax Company, (the Monopoly of the Association having been abolished as early as 1856,) the former retaining only about four square miles located on both sides



ACADIA COAL COMPANY LTD., STELLARTON

Waldren Photo

(1) Allau Shaft. (2) Group of Dragmen. (3) Office at Stellarton. (4) Albion Mine.

of the East River, from the Albion Mines to New Glasgow.

About this time too, the late James D. B. Fraser of Pictou began explorations to the West and South of the areas retained by the General Mining Association. He discovered the famous Stellar Coal which he began mining at once. He also organized the Acadia Coal Company, which commenced working the original McGregor seam, as well as the Acadia seam which in the meantime had been discovered about two miles to the southwest of the Albion seam. The discovery gave a new impetus to coal mining in the district. The Acadia Coal Company extended its operations. Companies such as the Intercolonial, Nova Scotia, Vale and some eight or more other were formed, all of which with the exception of the Intercolonial have since been abandoned or merged with the Acadia Coal Company, Ltd. whose operations are the largest in Pictou County.

The Acadia Coal Co., Ltd. controls at present the Allan mine embracing the Foord and Cage seams, the Acadia mine with the main seam, the Albion mine, comprising the Foord, Four Feet, Cage, Third and McGregor seams and the Vale mine with a six feet seam.

In 1909 the Societe Miniere du Canada, a Belgian Syndicate, became largely interested in the company, and its mining operations were more widely extended. At present the company employs about 1350 people and pays out in wages yearly close to \$900,000. During 1914 its total coal output amounted to 456,480 tons, of the 703,583 mined in the county, and

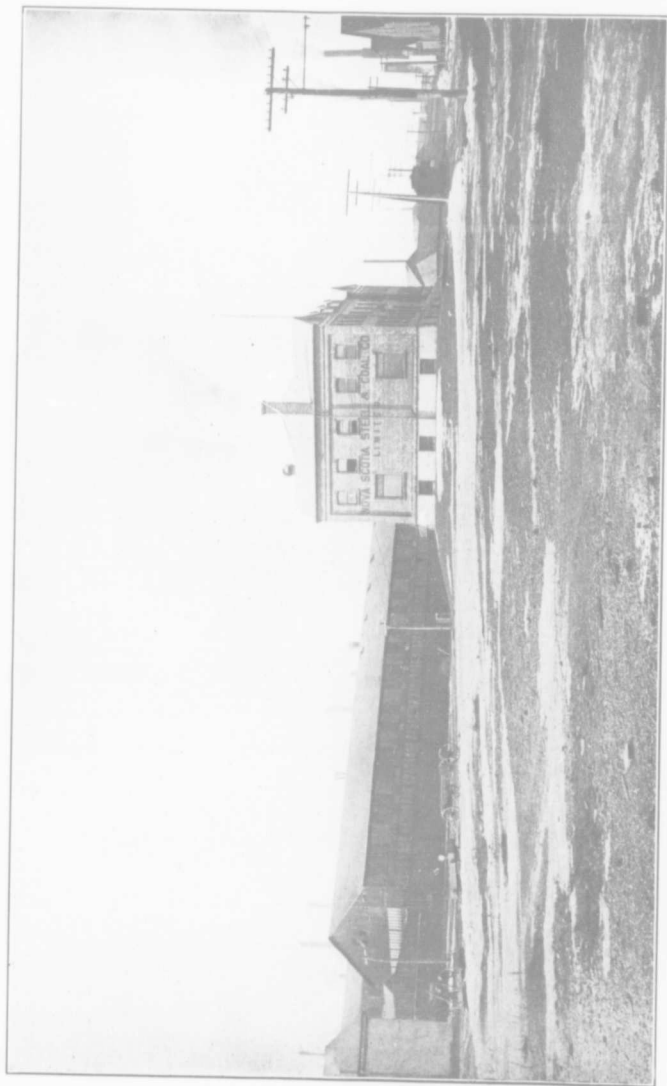
the 7,203,912 $\frac{1}{2}$ mined in Nova Scotia, giving it a place among the largest coal mining companies in the Province, and one of the most important factors in the industrial development of Pictou County.

The Intercolonial Coal Company, the only other coal company operating in Pictou County, was organized in 1868. The property has four seams of coal, the two upper seams of which are being worked, and they produced in 1914, 220,929 tons of coal, giving employment to 760 men and boys, and distributing in wages more than \$480,000 yearly.

The colliery also has a coke-making plant as well as a clay-working plant. It has two branch railroads, one connecting it with the Canadian Government Railway in the town limits of Westville, and another with a pier at Pictou Harbor, giving the Company abundant outlet for their product both by land and sea, the greater part of which is sold throughout Quebec and Maritime Provinces.

OTHER RESOURCES.

Explorations made under competent scientific men, have shown the existence in Pictou County of iron deposits of large extent and superior quality. At Sutherland river is a valuable deposit of Spathic iron ore varying in thickness from six to ten feet. In the East river valley near Springville is a vein of Lemonite from five to twenty five feet in width, about 65 per cent of which is metallic iron. From New Lairg near Glenarry eastward a vein of Specular iron ore has been traced which is nearly all pure peroxide of iron,



NOVA SCOTIA STEEL & COAL CO., LIMITED. Colonel Thomas Cantley, President and General Manager; A. McColl, Secretary.
Office and Works on left of Main Street, Trenton, just beyond New Glasgow Town limits.

Walders Photo

containing from 64 to 69 per cent. of metal.

The county also has large deposits of limestone, and an abundance of fire clay, for the manufacture of brick, pottery, and terra cotta products. It has quantities of silica sands, suitable for the production of glass of all kinds. Moulding sand of the finest quality is plentiful along the East river and its tributaries. Deposits of copper, antimony, silver and gold, abound in the adjoining counties, Guysboro having produced 1604 ounces of the 3158 ounces of gold mined by the Province during 1914.

The country round about still has large tracts of pine spruce and hardwood forests, the timber of which is suitable for the manufacture of a great variety of wood

products. As it is, nearly one half million dollars worth of logs and lumber are cut annually. The county has well tilled farms. No district in the Province is better suited for dairying or sheep raising. The hill-sides furnish an excellent pasture land, yielding a rich herbage, upon which cattle and sheep thrive to great advantage.

The Strait of Northumberland among the finest fishing fields of Eastern Canada, are less than ten miles distant. The Strait shore has clams, and oysters of the finest quality, which with cod, mackerel and other deep sea fish, find not only a ready market in towns of Northern Nova Scotia, but are also shipped to Western Canada, and exported to other countries in increasing quantities.

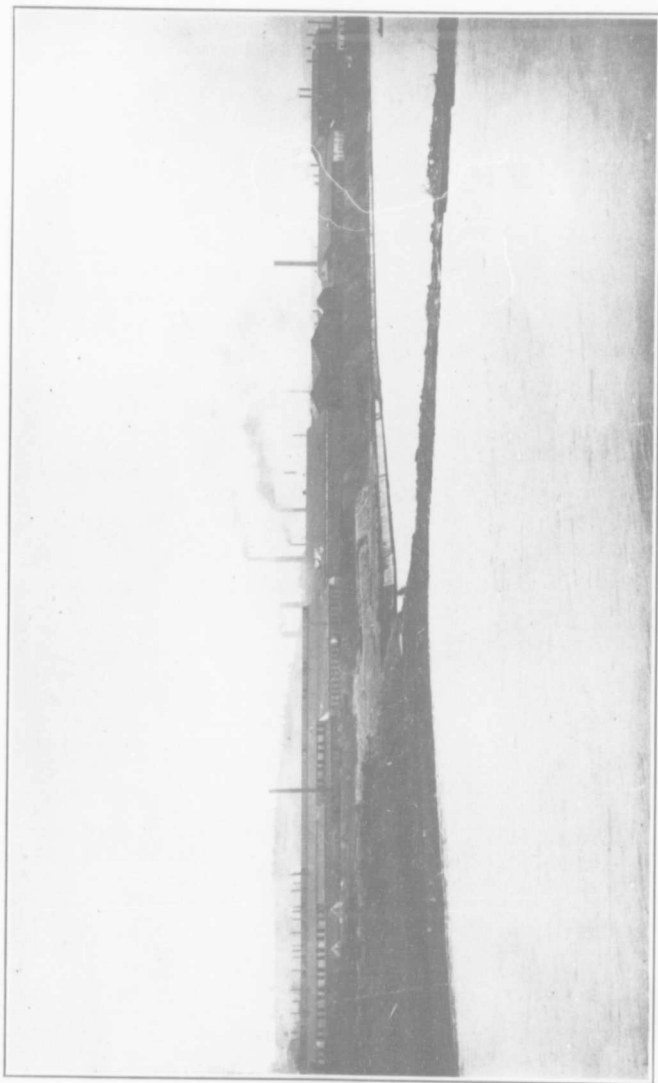
MANUFACTURING INDUSTRIES.



HE claim of the district's preeminence as the leading industrial centre of the Province, is largely due to the Nova Scotia Steel and Coal Company, Limited, which, in addition to its other interests, operates rolling mills, forges, and departments for manufacturing steel products located in Trenton, outside of the New Glasgow town limits, which claims the honor of being "the birthplace of teel in Canada."

The Company dates its inception to the Hope Iron Works, established in New Glasgow in 1872 with a capital of \$4000, and employing ten men, to make ship forgings. Later the firm manufactured car axles and railway spikes. The business prospered and in 1878

it was re-organized as the Nova Scotia Forge Company, and a new plant erected two miles from the town at a point which is now a part of Trenton. In 1882 the Company decided to manufacture their own steel, and accordingly, some of the stock holders organized the Nova Scotia Steel Co., erected works, and in 1883 produced the first steel ingots made in Canada. The same year they installed the first cogging mill in the Dominion for making steel billets. The success of the venture was such that in 1889 the two industries were amalgamated as the Nova Scotia Steel and Forge Company, with a capital stock of \$392,000. To secure their own pig iron, some of the directors, with others, organized the New Glasgow Iron



NOVA SCOTIA STEEL & COAL CO., LIMITED.
View of Steel Plant from the East River at Trenton, just beyond limits of New Glasgow.

Walders Photo

Coal and Railway Company, capitalized for \$1,000,000. Land containing iron ore was purchased along the East river and elsewhere; a railroad was built from the mines at Sunnybrae to Ferrona Junction on the Intercolonial, and a coal washing plant, retort coke ovens, and blast furnace were erected at Ferrona, seven miles from New Glasgow.

In 1894 the Company acquired the Wabaha Iron Ore deposits at Belle Isle, Conception Bay, Newfoundland, now the greatest iron ore mines in British North America, from where ores were shipped to the blast furnace at Ferrona, then in successful operation. In 1895 another amalgamation took place, and the Nova Scotia Steel and Forge Company, and the New Glasgow Iron Steel and Railway Company took again the name of the Nova Scotia Steel Company, now capitalized for \$2,060,000.

Next, to procure its own coal supply, and to make it completely self-contained, it acquired in 1900 the Sidney Mines, Cape Breton, from the General Mining Association, which had operated them since 1830, and by the purchase securing an unlimited supply of metallurgical coal. The next year another reorganization took place, and the Nova Scotia Steel and Coal Company as it exists today, was formed with a capital of \$6,600,000 which since that date has increased to \$16,000,000. Following this reorganization, new coal shafts were sunk. A modern steel plant with a blast furnace and open hearth steel, capacity of about 100,000 tons per year was erected, equipped with the necessary coke

ovens, coal washers and engineering shops, and the manufacture of pig iron and steel transferred from Ferrona and Trenton to Sydney mines, which not only furnished all the raw materials for the Trenton mills and forges, but also supplies steel to all the other steel mills and forges in Canada.

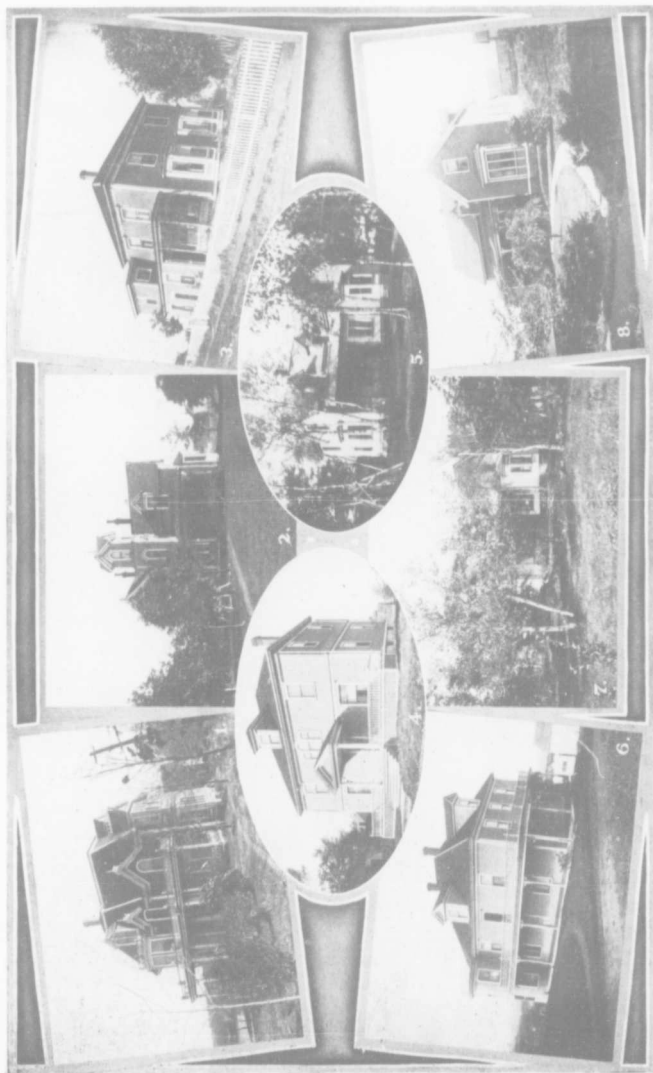
Such is a brief outline of the founding, growth and development of the Company, which has not only made Nova Scotia industrially prominent, but has also been one of the most dominant factors in the growth of the iron and steel industry of Canada. It conducts the rolling mills, forges, railway car axle shops and the departments for other finished steel products at Trenton. The plant covers some 25 acres, housed in a group of modern steel and concrete buildings. The rolling mills have cogging mills to reduce the steel ingots weighing 6,600 pounds to billets, besides plate mills, bar mills and finishing mills. The spike, rivet, bolt, nut, polished shafting, tie and fish-plate, reeled machinery, steel and other departments, are located in two steel and concrete buildings having two and one-half acres of floor space, turning out over 700 varieties of bars, plates, and other products. It has a hydraulic forging plant, comprising a 4000 ton press, handling ingots weighing 30 tons and upwards, and one 600 ton press for smaller work, enabling the company to furnish forgings from fluid compressed steel equal to any in quality and dimensions produced anywhere.

The plant has an unequalled railway car axle manufacturing



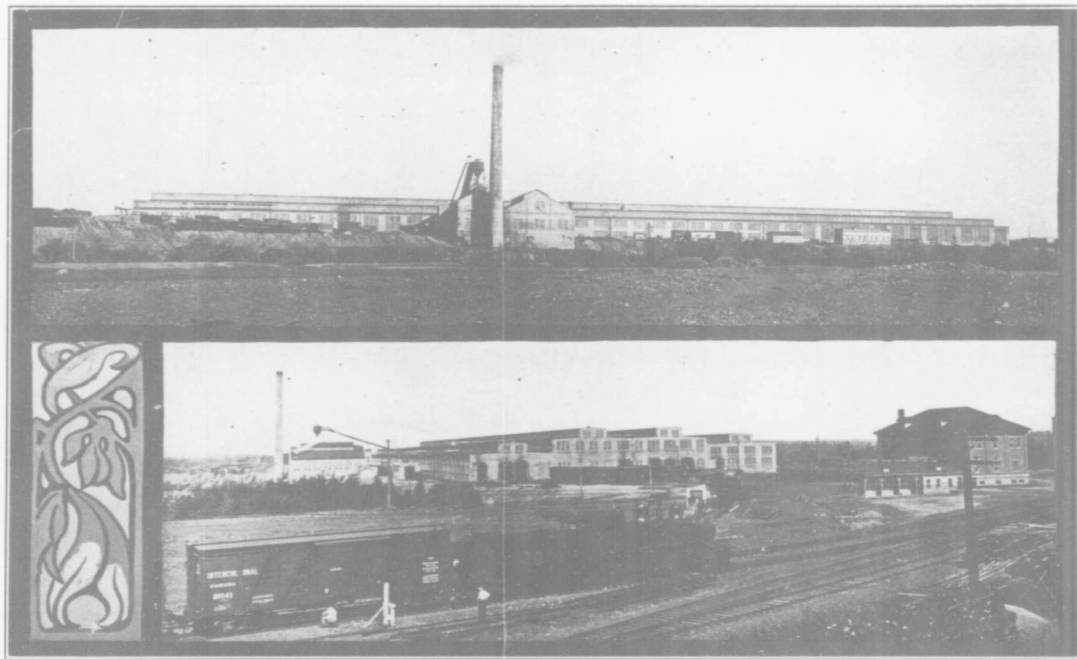
THOMPSON & SUTHERLAND LIMITED, NEW GLASGOW.
 Wholesale and Retail Hardware Dealers and Slave Manufacturers. New Glasgow Store and Branches.
 Stores, (1) Stellarton. (2) New Glasgow. (3) Sydney Mines. (4) Westville. (5) Glace Bay. (6) Sydney. (7) Foundry, North Sydney. (8) North Sydney, N. S.

Waldren Photo



SOME WESTVILLE HOMES
 (1) George E. Munro. (2) T. J. Gray, J. P. (3) Glebe House. (4) Mayor H. A. McQuarrie. (5) St. Phillip's Presbyterian Church Manse. (6) Miss Jeannette Johnson. (7) R. Fraser. (8) Carmel Presbyterian Church Manse.

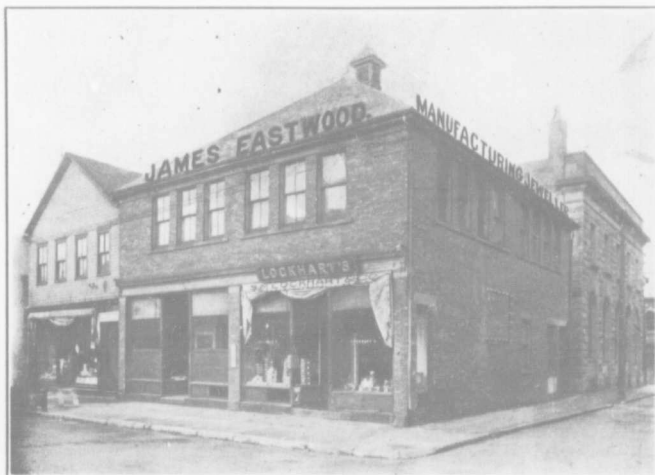
Walders Photo



THE EASTERN CAR COMPANY LIMITED, TRENTON, JUST BEYOND NEW GLASGOW.

Waldren Photo

A subsidiary company of the Nova Scotia Steel & Coal Co., Ltd. Showing two views of one of the most modernly equipped car manufacturing plants in Canada.



JAMES EASTWOOD, NEW GLASGOW.
Manufacturing and Wholesale Jeweler. Showing Factory.

Waldren Photo

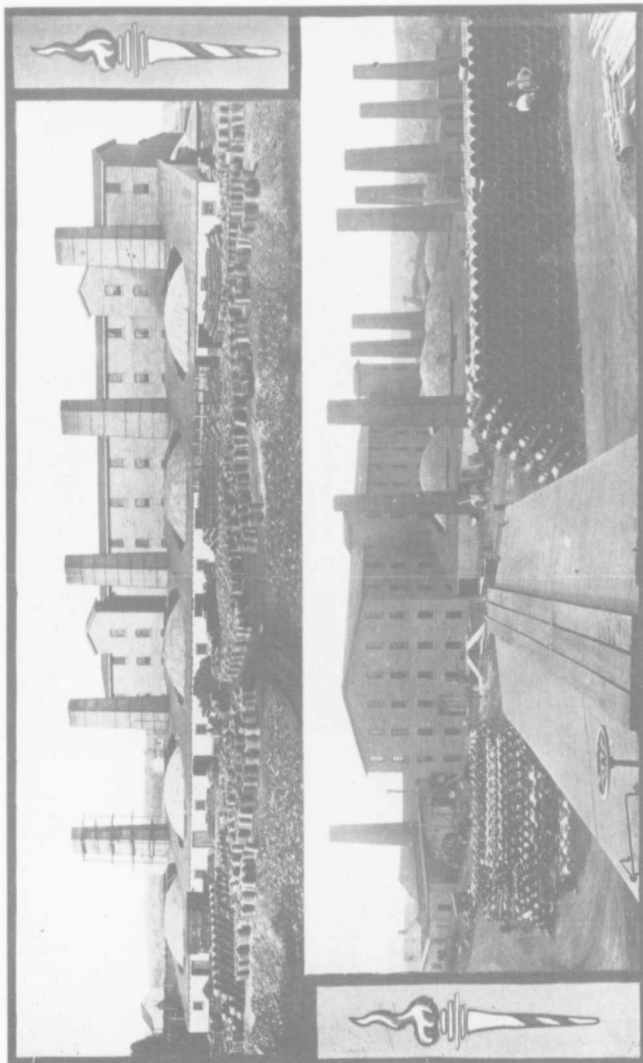
shop which produces a greater output monthly than any similar works in the British Empire. Connected also with it are large carpentry, pattern, woodworking, structural and engineering shops, with shipping and store room, the whole of which is served by a twenty-five ton travelling crane 850 feet long, with 75 feet span, making it one of the best equipped and efficient steel plants in Canada.

The Wabana Iron Mines owned by the Company, total 83½ acres, the greater part of which extends under the sea, the ore seams of which are much thicker and richer than those on the land. The mines contain thousands of tons of high grade ore, sufficient to supply three times its requirements for centuries to come.

The Company's collieries in Cape

Breton are among the most important in Canada. Its holdings comprise seventy one square miles and are supposed to contain every seam in the district, only a small portion of which has been worked. They have five well equipped mines in operation, producing about 9,000,000 tons yearly, a great part of which together with the product of a 250 acre limestone quarry, located nine miles from the furnaces, is utilized in the immense steel plant, with blast furnace and coke ovens which it also operates at Sydney mines, producing about 100,000 tons of steel annually.

The Company has some fifteen steamers in its employ. At Sydney mines it has eight miles of railway and twelve miles of siding. It has two coal discharging piers at North Sydney. It also has



STANDARD CLAY PRODUCTS LTD.
Head Office St. Johns, Quebec. The largest manufacturers of Clay Products in Canada. Two view of the two New Glasgow Plants. *Walden Photo*



CAMPBELL'S WEST SIDE BAKERY. *Waldren Photo*
 S. F. Campbell, Proprietor, New Glasgow.
 Manufacturer, Bread, Pies, Cakes and Pastry. Maker of "The Bread of Merit".

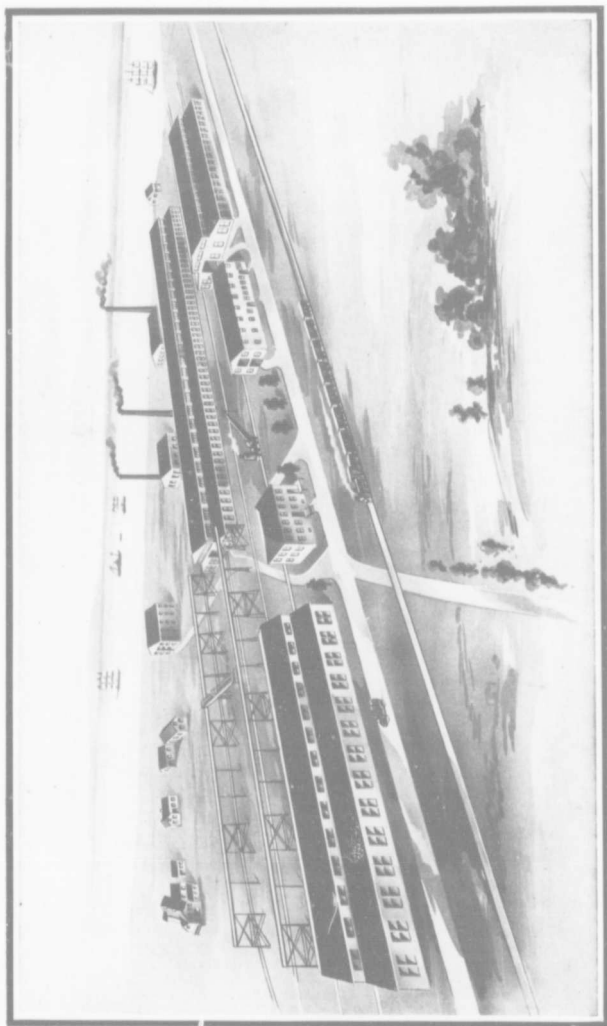
docks and plants at Montreal and Quebec to handle the immense quantities of coal sold by the company in Upper Canada.

The company's output of steel, iron and metal products are sold in all parts of the world. It has grown from a \$4000 firm with ten men to a \$16,000,000 stock company employing seven thousand people, four thousand of whom find work in Trenton. In it are merged the companies which mined the first coal and smelted the first steel in Canada. It owned the first coggin mill in Canada. It was the first in the Dominion to convert native ores into steel bars and forgings and to make steel railway axles. It was the first to mine ores under the sea, and the first company on this Continent to wash coal in a commercial way, and the first to make blast furnace coke in

retort ovens. It installed the first steel compression plant and the first steam hydraulic forging plant erected in Canada. It is one of the few self-contained steel companies in the world, and by reason of the fact that it controls not only every stage in the production of its raw material, but also because it has been a pioneer in those processes which make for efficiency, it has met with great financial success, Scotia's securities yielding a larger return and selling higher in the markets than those of any similar company in Canada.

In the further extension of its many interests the Nova Scotia Steel and Coal Company organized in 1911 the Eastern Car Company Limited with \$1,000,000 preferred, and \$1,000,000 common stock, and \$1,000,000 of 6 per cent. bonds.

The site on which the plant is



Waldren Photo

EASTERN STEEL COMPANY LTD., TRENTON, P. O. NEW GLASGOW,
Contracting Engineers, Formerly the Brown Marhine Company Ltd., and the Bailey Underwood Co. Ltd.



WM. M. FRASER, BUILDER & CONTRACTOR.
Manufacturer of all kinds Building Material, New Glasgow.

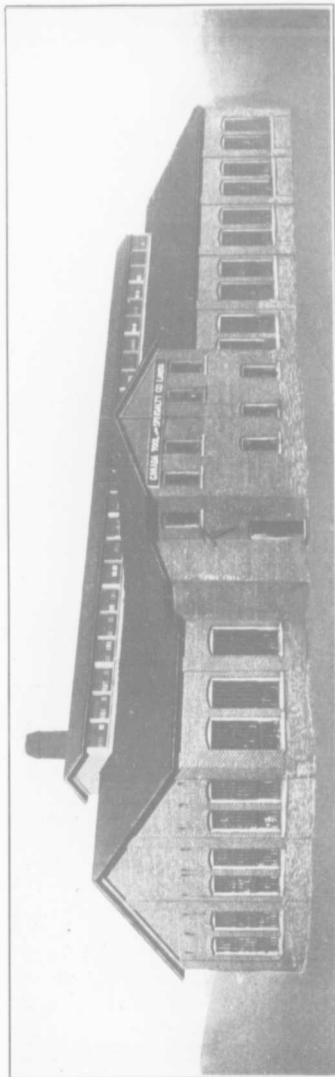
Waldren Photo

located comprises sixty-eight acres adjoining the steel company, along the Government Railways and facing the tidal waters of Pictou harbor on the East River at Trenton. The main building is 450 feet wide and one-fourth of a mile long, and has some 15 acres of floor space. The plant is modernly equipped and has a capacity of thirty steel cars per day, being one of the most economically operated car building plants in Canada. The company began building cars in 1913, producing a large number of cars for the Canadian Government Railways. Shortly after the outbreak of the war the company received an order for 2000 cars from the Russian Government, followed since by others, to build which, in addition to the orders for the Canadian Government Railways and other railroads, it is kept intensely

busy, employing at present more than 1000 men.

Another large iron industry located in New Glasgow is the Maritime Bridge Company Limited, the largest bridge company in the Maritime Provinces, incorporated in 1909. It owns a premises of some twenty five acres along the main line of the Intercolonial Railway to Sydney, Nova Scotia, on which are located the main buildings 90 x 350 feet, power plant, forge, template shop, general office building, and shipping yards with crane runways for loading and unloading the heavy materials used and fabricated at the industry.

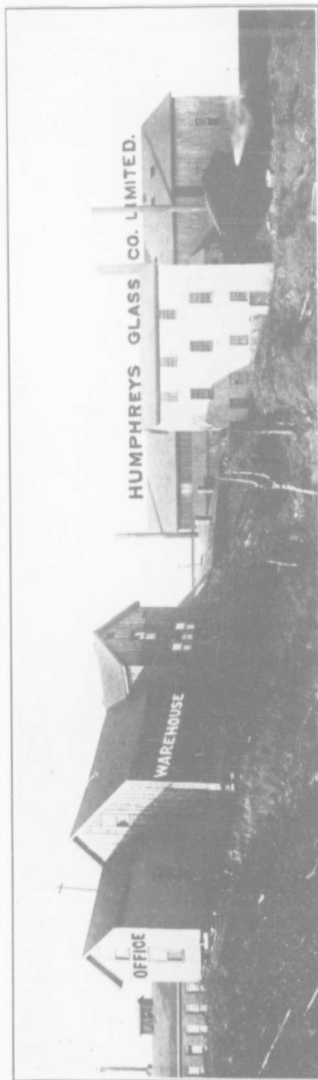
The plant is equipped to handle every variety of structural steel and plate work, for bridges, steel buildings, roof trusses, turn tables, towers and girders; taking contract not only for the fabrication of the



Manufacturers of special screw machinery products punching dies, metal stampings, rifle sites, motor accessories and special machinery and tools. Manufacturers of Rifle Sets for the Canadian Government.

CANADA TOOL AND SPECIALTY COMPANY LIMITED, NEW GLASGOW.

Waldren Photo



Manufacturers of Lamp Chimneys, Fruit Jars and Glass Bottles of all kinds.

HUMPHREYS GLASS CO. LIMITED, TRENTON.

Waldren Photo



D. PORTER & SON, FACTORY, STELLARTON.

Waldren Photo

Manufacturers and Dealers in sawed & round lumber and building material of all kinds.

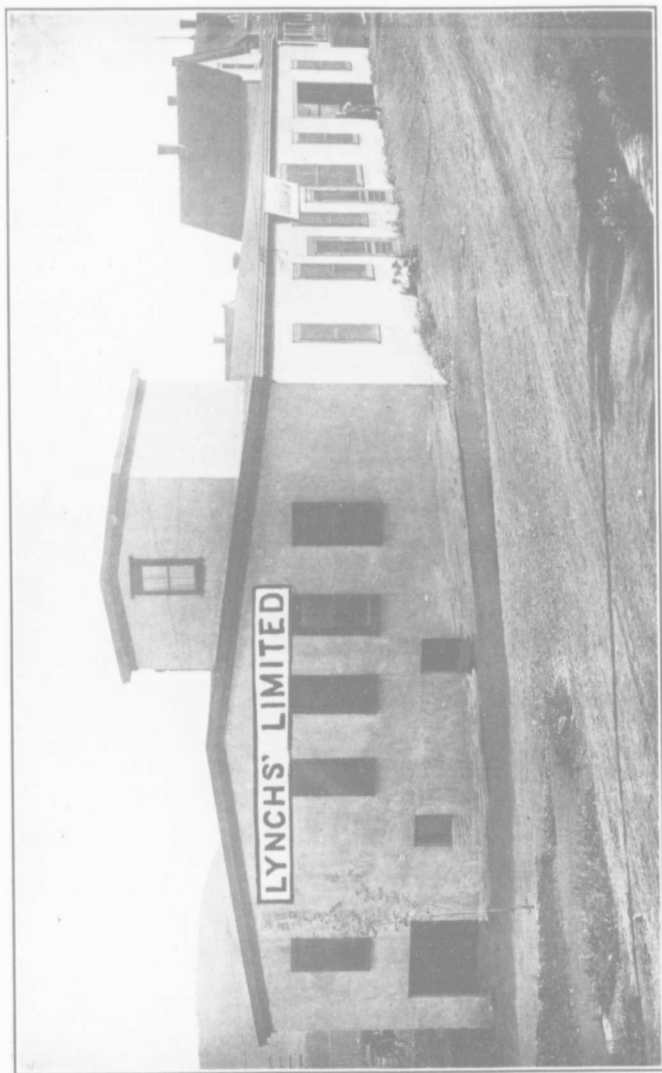
material, but also to lay the concrete floors and abutments, and to build and erect the structures, however small or large.

The company employs about one hundred and fifty men, not including those employed in erection work, and is capable of producing 8000 tons of steel finished material yearly, the structural sheets and steel plates being obtained largely from the Nova Scotia Steel and Coal Co., with additional material from American mills, which fabricated are used in their own extensive building operations extending throughout the Maritime Provinces, Newfoundland and Quebec.

The company, since its incorporation, has erected a large number of road bridges and other structures. At present it has the contract to erect a bridge at Lennox Pas-

sage, Cape Breton, 1200 feet long, with a central swing span of 200 feet, which, when completed, will be one of the largest bridges in Nova Scotia.

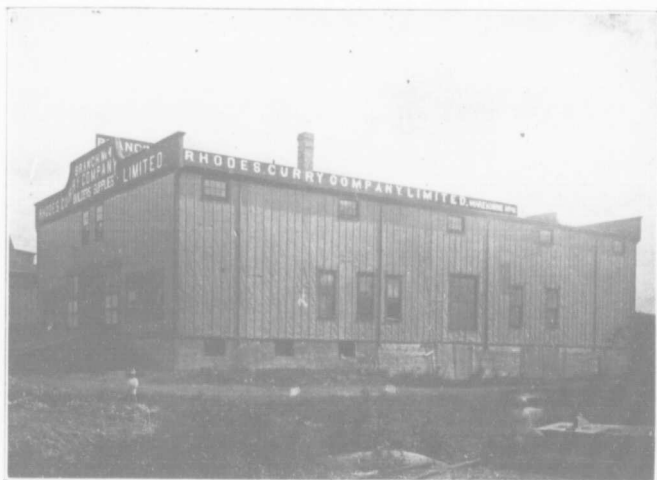
The Standard Clay Products Limited, the largest manufacturing industry of clay products in Canada, with a factory and head offices in St. Johns, Que., has had a factory near New Glasgow since 1902. The industry owns at this point some 63 acres of land, on which are located the factories kilns and office buildings and which also supplies the clay from which their products are produced. The industry comprises two plants, one with 9 and the other with 10 kilns. The former plant has an output of thirty carloads, and the second thirty-five carloads per week, or a total output of about 3300 carloads per year for 300



View of the Stellarton factory—Head Office Sydney, N. S. The company also operates factories in Sydney and Halifax, N. S. The largest Baking Industry East of Montreal.

LYNCH'S LIMITED.

Walders Photo.



RHODES, CURRY COMPANY LIMITED.

Waldren Photo

General Contractors and Manufacturers. Dealers in All Kinds of Building Material. View of the New Glasgow Branch Warehouse. Head Office: Amherst, N. S.

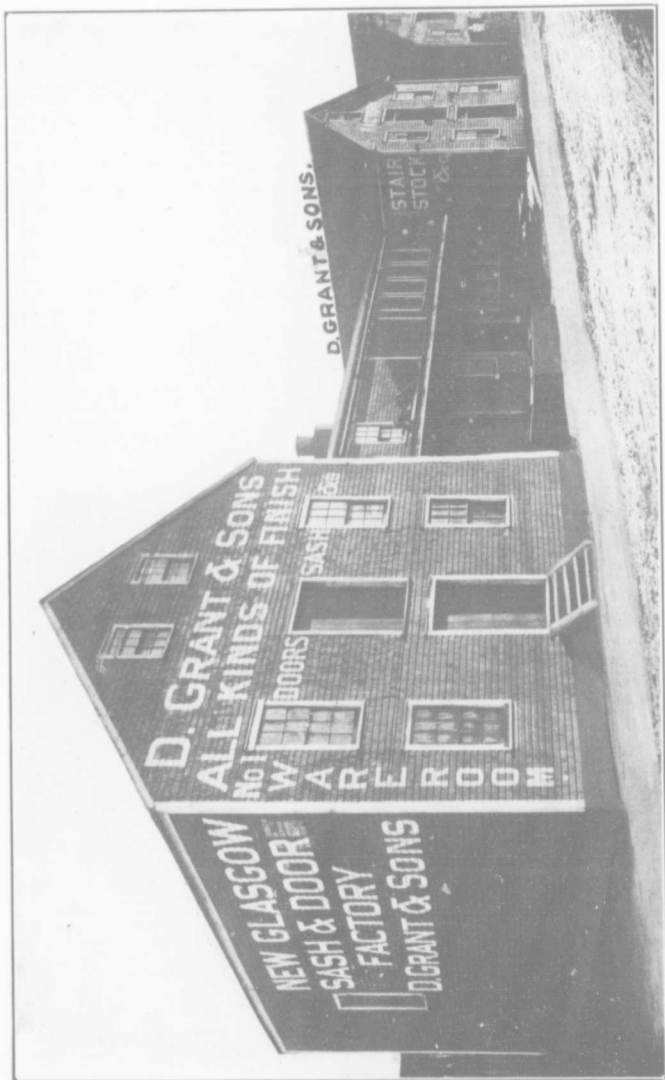
working days, when running to full capacity; and if measured in tons the output runs to 52,000 tons yearly.

The product consists of salt glazed vitrified sewer pipes, ranging in size from 4 to 24 inches, and connections, culvert pipes, inverts flue linings, stove linings, fire brick range bricks, locomotive blocks, gully traps, hollow vitrified building blocks, cupola linings, and all kinds of fire clay goods in the manufacture of which some 150 people are employed. The goods produced are all made from clay found on the premises. In fact it was the high character of the raw material, which prompted the company to locate a factory here. The raw material in sight on the sixty-three acres owned by the company was recently estimated by the Canadian Appraisal Company to

be over 2,000,000 tons, all located above drainage, and easily and cheaply obtainable.

The Eastern Steel Company, Limited, organized in 1913 with a capital of \$1,000,000 is an amalgamation of the Brown Machine Company, contracting engineers and manufacturers of mining machinery, and the Bailey Underwood Company, spring and steel specialty manufacturers.

The industry occupies about fifteen acres of ground, facing the East river, with the Government Railways passing through the property, thus giving it unexampled shipping facilities by rail and river. On it are located the foundry, machine, spring and structural steel shops, for the production of mining and carrying machinery, structural steel products, steel building material, oil tempered springs and



D. GRANT & SONS, NEW GLASGOW.
 New Glasgow Sash and Door Factory, New Glasgow. One of the largest woodworking industries in this section of Nova Scotia.

Walden Photo



J. J. GRANT, NEW GLASGOW,
Contractor and Builder. Dealer in all kinds of Building Material.

Waldren Photo

farm and garden tools,—the raw material for which is largely obtained from the iron and steel companies of Nova Scotia. During the past year the company has been devoting all of its energies to the manufacture of shells and other war material for the Imperial Government, in the production of which in addition to its other work, the company employs at present some 300 persons, paying out in wages at the rate of \$170,000 yearly, all of which is largely spent in the surrounding towns. In addition to their home trade, which covers the Dominion, they export their products to Great Britain, France, Australia, South Africa, etc.

The mining tool industry of J. W. Cumming & Son Limited, is the outgrowth of the business established by J. W. Cumming, 1902, when in a small way he began the manufacture of coal drills, draw bars and other coal-mining tools. At his death in 1908, his son J. T.

Cumming took over the business which in 1911 was incorporated for \$50,000 and became president and general manager.

As an indication of the growth of the industry it may be mentioned that it started with one furnace, a trip hammer and four workmen. Today it embraces with the foundry, machine shops, warehouses and offices, about 40,000 sq. feet of floor a space, maintaining thirteen fires, four trip and steam hammers, electric drills, lathes and other machinery, giving employment to 150 people, manufacturing coal drills, coal cars, draw bars, boring machines, coal culling machinery and coal miner's tools, which it sells to every coal mine in the Dominion, besides machining and finishing high explosive shells for the war department, and paying in salary and wages yearly more than \$100,000, being the second firm to ship high explosive shells from Nova Scotia.



NEW GLASGOW RESIDENCES. *Wallgren Photo*
 (1) J. T. Cumming; (2) Frank Sutherland; (3) Councillor J. Weil; (4) R. B. MacKay, M. P.; (5) J. J. Frawley; (6) Francis Drake; (7) A. McColl; (8) Mayor J. D. Grant.



THE JOHNSTON BLOCK, John Johnston, owner.

Waldres Photo

W. W. Osborns, Billiard Parlors. A. McDonald, Barber. T. H. Cochran, Druggist.
A. M. Ferguson, Confectionery. H. J. McGirr, Grocer.

The Canada Tool & Specialty Co. Limited was first started as the Canada Rifle Site Company. In 1911 it was reorganized under its present title, and the factory was equipped with the most modern machinery, making it one of the finest plants of its kind east of Montreal.

The company are manufacturers of special machinery and tools, punching dies and metal stampings, special screw machine products, motor accessories, gasoline engines, and rifle sites, which latter they manufacture in large quantities for the Canadian Government, besides making gauges for shell manufacturers. To make the rifle sites requires 103 operations, and the company is turning out at present 600 sites per day, employing about 120 people, who receive in

wages about \$7,000 monthly, placing it among the most important industries of New Glasgow.

One of the most important manufacturing industries of the district is the Humphreys Glass Co. Limited located in Trenton. It is a \$50,000 corporation and is the only glass plant east of Montreal, and practically the only one in Canada which is not a member of the glass manufacturing combine. It operates a modern plant, and employs about 100 people, manufacturing bottles, fruit jars and lamp chimneys, which it sells from Montreal to Halifax and the Sydneys, Prince Edward Island and Newfoundland.

The McNeil Machine & Motor Company Limited, owned by Mr. Walter McNeil, is one of New Glasgow's newest industries. It was



TYPICAL NEW GLASGOW HOMES. (1) Counselor P. M. Fraser. (2) G. R. Waldren. (3) A. R. Chambers. (4) John Johnston. (5) Henry Ritchie. (6) W. M. Fraser. (7) O. R. Fraser. (8) E. F. Munro. Waldren Photo.



THE J. D. & P. A. MCGREGOR, LTD. BLOCK, NEW GLASGOW. *Waldren Photo*
 Offices of J. D. & P. A. McGregor Ltd., wholesale Lumber Dealers. Stores of R. McGregor & Sons,
 Ltd., Wholesale Grocers. C. L. Beck & Co., Retail Dry Goods. Offices of Other Firms.

incorporated in January, 1915, after taking over the plant of the Fraser Machine & Motor Co., the equipment of which already first class, was greatly enlarged by the addition of \$35,000 worth of new machinery.

The factory 70 x 300 feet is at present devoted exclusively to the manufacture of shrapnel shells for the war department, and employs 100 people manufacturing from 400 to 500 shells per day, and paying out in wages more than \$7,000 monthly. Following the close of the shell-making period, the company expect to build motors and general machinery, for which the equipment is especially well fitted.

The Albion Machine Company of Stellarton, employing some 250 people, of which Mr. Walter McNeil of the McNeil Machine &

Motor Company Ltd., is owner and manager, recently took over the skating rink building 90 x 250 feet in size. The building has been remodeled, a concrete floor laid down, and new shell making machinery installed for the production of 4 pt. 5 war shells of which it produces from 500 to 600 per day, paying out in wages about \$17,000 every fortnight, thus making it one of the largest producers of these shells in the Maritime Provinces.

Lynchs' Limited, with headquarters in Sydney and a factory in Halifax, also has a branch in Stellarton. Like their other bakeries, it is equipped with modern machinery which takes the flour from the barrel and passes it on through all the various operations, with the hand scarcely touching the material until baked into bread,



TYPICAL NEW GLASGOW RESIDENCES

Waldren Photo

- (1) H. T. Sutherland, (2) James McNeil, (3) H. Goodman, (4) T. A. O'Brien, (5) Councillor H. G. Grant, (6) Harry McNeil, (7) James Roy (Town Clerk), (8) James MacArthur, (9) James A. Fraser and home of Councillor Don F. Fraser.



THE WHITE BLOCK, WILLIAM D. WHITE, Owner. *Waldren Photo*
Housing F. W. Woolworth Co. Ltd., Five and Ten Cent Store.

thus making the product perfectly sanitary.

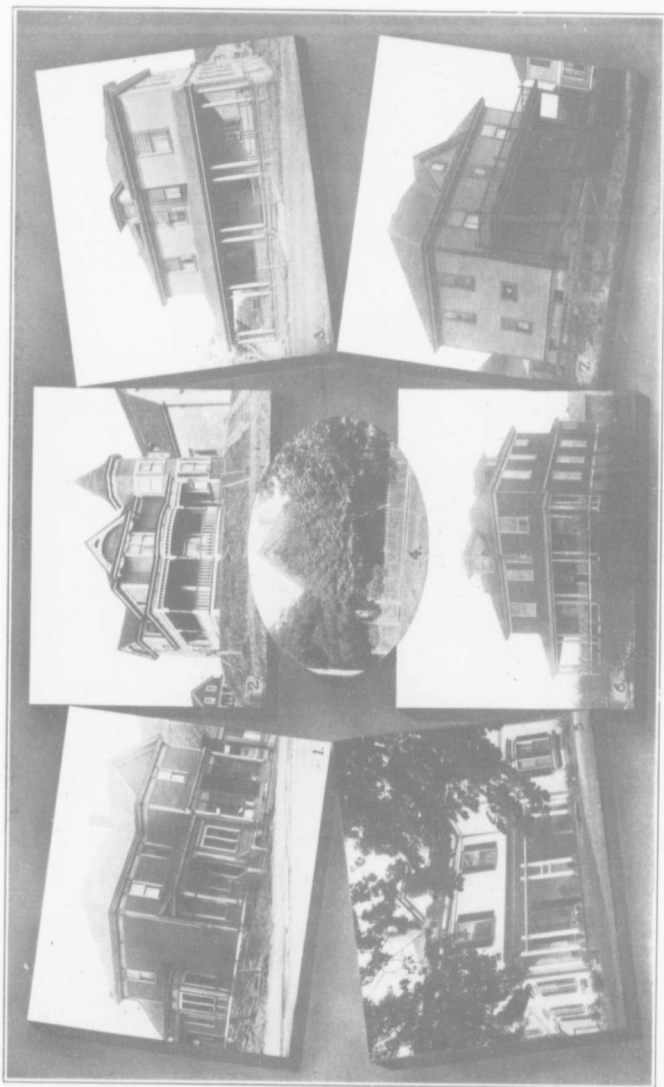
The company makes the famous Colonial cakes, put up in packages in ten varieties and flavors and sold at popular prices. They also make a specialty of package doughnuts and variety pastry, all of which like the bread is wrapped in wax paper and sealed.

The product is delivered daily by wagon in the towns of Stellarton, New Glasgow, Trenton, Westville, Eureka, Thorburn and Hopewell, and shipped by train every morning to some fifteen towns in Northern Nova Scotia as well as to Prince Edward Island. The Sydney factory supplies the eastern part of the Province and the Halifax factory the southern and western section of Nova Scotia, the three factories producing some 20,000 loaves of bread daily in ad-

dition to pastry, employing 80 persons with a wage roll of \$40,000 yearly, making it the largest bread baking company east of Montreal.

The Campbell's West Side Bakery, of which Mr. S. F. Campbell is the proprietor, was established in New Glasgow in 1908. The plant is modernly equipped and sanitary, and has one of the most up to date ovens in Canada, with a capacity of more than 6000 loaves of bread per day, the full energy of which is practically utilized for the production of his well-known "Bread of Merit" and a large output of pies, cakes, and pastry of all kinds of the finest quality.

The product is not only delivered every day in the towns of New Glasgow, Stellarton, Westville and Trenton, Hopewell, Eureka and Thorburn, but is also shipped to a large number of outlying towns in



STELLARTON HOMES

(1) J.D. O'Hanley. (2) Dr. M. MacDonald, Lourdes. (3) George Gray. (4) Jas. D. Fraser. (5) H. Prud'homme (6) F. Notchart. (7) Counsellor J. F. MacPherson.

Wallace Photo



MUIR BROTHERS, NEW GLASGOW.
Dealers in Hay, Feed and Groceries.

Walden Photo

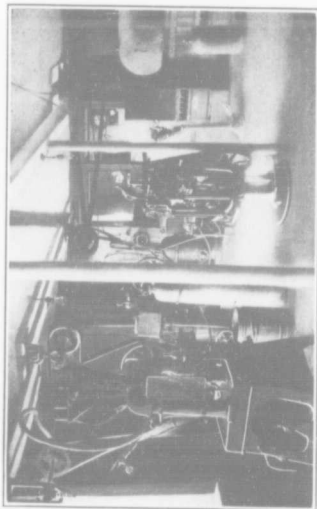
this section of the Province, where the demand for the Campbell bread products is constantly increasing.

Donald Grant & Sons, of New Glasgow, operates one of the largest woodworking industries in Pictou County, which comprises planing mill and woodworking factory, a dry kiln, three large warehouses, and two lumber yards, the latter carrying constantly 1,000,000 sq. feet of lumber.

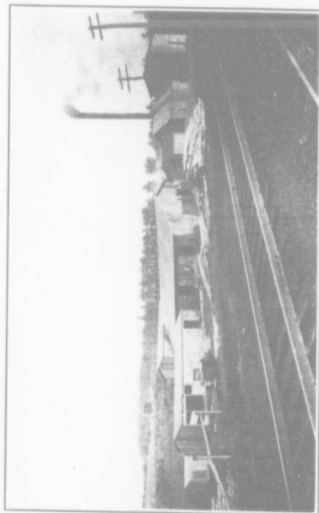
The firm employs in the factory about twenty men, manufacturing sash, doors, blinds, mouldings, office and church furniture, and other building supplies, which they utilize not only in their own extensive building operations, but also sell throughout the Eastern part of Nova Scotia. They are extensive contractors, erecting wood, brick and stone buildings. They have erected such buildings as the Post

Office and High School in New Glasgow, besides many others in this section of the Province, and employ in this work from fifty to sixty people, whose earnings represent a large wage roll and which in addition to the more than \$12,000 paid out in the factory, makes the firm an important factor in the industrial life of the district.

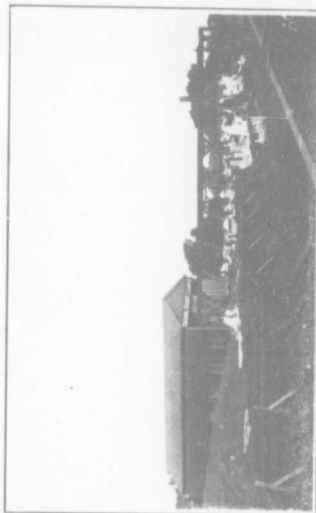
Another woodworking industry is that of D. Porter & Son of Stellarton, who conduct a modernly equipped sawmill and factory, with a lumber yard carrying some 500,000 feet of lumber of all description. The firm employs ten to fifteen people, manufacturing doors siding, sheathing, door-frames, window frames, sashes, blinds and other wood material used in building construction. They also are extensive lumber operators. Mr. David Porter during the past twen-



FRANCIS DRAKE, NEW GLASGOW.
Aerated Water Manufacturers. An Interior View of Factory.



CAMERON & FRASER CO. LTD., NEW GLASGOW.
Manufacturers of Hardwood Flooring, Shooking, Door and Window Frames
and House Fittings of All Kinds.



COLONIAL GRANITE COMPANY LIMITED, NEW GLASGOW.
Granite Dealers and Manufacturers of Marble and Granite Tombstones.



HOME OF EASTERN CHRONICLE, James A. Fraser, proprietor
Oldest Newspaper, New Glasgow,
Est. 1843.



VINEBERG GOODMAN & CO., NEW GLASGOW.
Dry Goods, Clothing, Furnishings, Ladies' Wear, Boots and Shoes, etc..

Waldren Photo

ty-five years has furnished millions of feet of lumber for the Intercolonial Coal Mine. The firm operate movable saw mills during the winter months, cutting spruce, pine and cypress, as well as hardwood, a part of which is worked up into building material in their own factory and the balance prepared for export, chiefly to the British Isles.

Cameron & Fraser Co. Ltd., conduct a modernly equipped wood-working factory, manufacturing flooring, sashes, sheathing, wainscoting, window and door frames, and wood supplies of all kinds, as well as caskets, employing some thirteen people and paying out in wages nearly \$7,000 yearly.

The Colonial Granite Company Limited, situated along the Intercolonial Railway, operates a modernly equipped plant for cut-

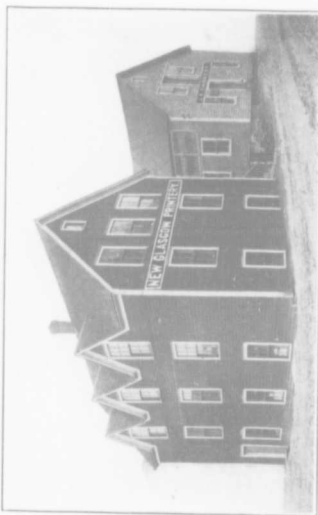
ting, carving, polishing and lettering granite and marble tombstones and headstones. The company is prepared to do all kinds of figure work and carving of the finest quality. It owns large quarries near Old Bay, Newfoundland, the product of which they use not only in their own business, but also sell to other manufacturers, doing a business extending from Newfoundland to Montreal and to Prince Edward Island.

The Francis Drake Aerated Water plant is equipped with modern machinery for the production of syrups and carbonated beverages of all kinds. All water used is distilled in a special plant and all parts of the factory are clean and sanitary, so as to assure a beverage pure and wholesome.

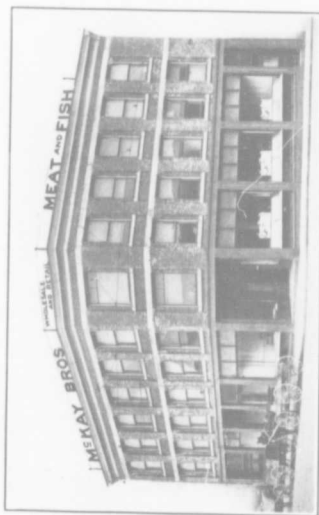
The output embracing carbonated water, syrups, lime juice and



NEW GLASGOW STEAM LAUNDRY LIMITED, NEW GLASGOW.
The only Steam Laundry in Pictou Co.



JOHN E. GARRETT, NEW GLASGOW.
Owner of New Glasgow Printery.
Bug Pattern Manufacturer.



MCKAY BROTHERS, NEW GLASGOW.
Wholesale and Retail Meat and Fish Dealers.



NICKERSON & CO. LTD., NEW GLASGOW. Wholesale fruit and produce.
New Glasgow Warehouse and Office. Headquarters Halifax, N. S.



FANJOY'S LIMITED, NEW GLASGOW

Waldren Photo

Dealer in Clothing, Hats, Caps and Furnishings. Represent Randall & Johnson and House of Hobbslin.

cider, in the production of which some fifteen people are employed, together with cigars, cigarettes and tobacco, are sold locally, and in the Maritime Provinces and Magdalen Islands.

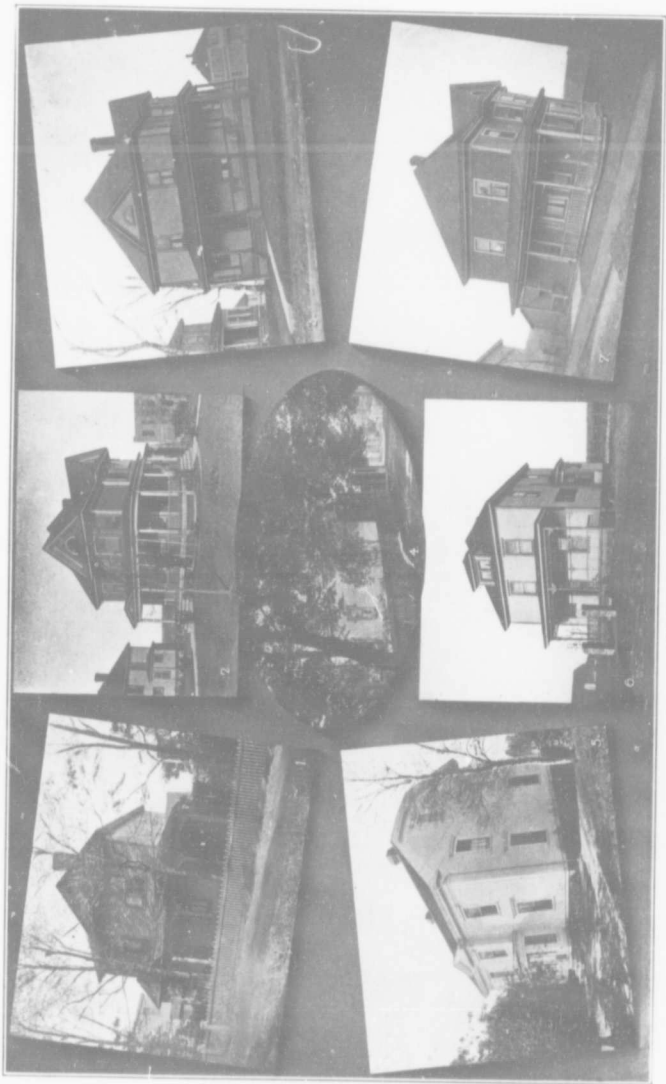
The only factory in Canada for the manufacture of Burlap Rug patterns for home made rugs is owned by John E. Garrett of New Glasgow, the output of which is sold throughout the Dominion and Newfoundland. Mr. Garrett also conducts the New Glasgow Printery and is also a large producer of artistic signs and banners.

The Pictou County Dairy Co. Ltd., located in Stellarton and incorporated on August 22nd, 1913, is a co-operative institution, the stock of which is largely owned by the farmers who sell the cream to the company. The company charges three and one-

half cents per pound for making the butter, which the company sells, dividing the profits on the basis of the amount of butter fat contained in the cream furnished by each individual farmer, to whom was paid more than \$30,000 the past year.

I. Matheson & Co. Limited, machine and boiler manufacturers, employing one hundred and fifty people, was founded in 1867. When the town was a shipbuilding centre the then owners of the industry furnished many of the ships built here, one of which was the "James William," the first schooner propelled by steam to be built in New Glasgow.

James Eastwood, manufacturing wholesale and retail jeweler, established in New Glasgow since 1871, employs in his operations about twenty people. He also



STELLARTON HOMES. (1) W. C. MacDonald. (2) J. W. Henderson, Town Clerk. (3) Court, J. B. McKay. (4) B. D. Rogers. (5) Grant Bros. (6) Walter Chisholm, Lourdes. (7) Court, J. C. McKay. *Walders Photo*



Adam C. BELL, CHEMIST AND DRUGGIST, NEW GLASGOW. *Waldren Photo*
Known as the Rexall Store. One of the Foremost Pharmacies in this Section of Nova Scotia.

imports jewelry and fancy articles from England, France and Japan. which, with his own manufacture, he sells at wholesale throughout the Dominion, at the same time conducting one of the most up-to-date retail jewelry stores in town.

Barring a wet-wash laundry, the New Glasgow Steam Laundry Ltd., giving employment to about fifteen people, is the only steam laundry in Pictou county. It has branches in Pictou, Stellarton, Trenton, Antigonish, Hopewell, Eureka, Springhill, Guysboro, Mulgrave and Canso, and does a large trade.

Another important New Glasgow industry is the Munro Wire Works Limited, comprising some 23,000 square feet of floor space, manufacturing wire fencing, spring beds, mattresses, grills, and other wire goods, in the production of

which some twenty-five people are engaged.

The Trenton Repair Company, including a garage and machine shop and employing nine men occupies a modernly equipped fire proof concrete building to which further addition is to be added the coming summer.

The Steel Furnishing Co. Ltd., employs about twenty people, and the box manufacturing firm of Robertson & Dewar about twenty-five persons. Johnson & McDonald are manufacturers of corn and feed and grain dealers. The Maritime Jewelry Co. do gold and silver plating. George and Stephen Brooks each conduct a brick yard, and Dickson's wet wash laundry fills a real want, while the New Glasgow Machine Co., Bigelow & Hood, confectionary makers, F. A. Carr, cigar manufacturers of Stel-



THE ROYAL BANK OF CANADA.

Waldren Photo

larton, and Crockett Bros. makers of creamery supplies, and Doyle & McCool, saw millers, both of

Westville, with other smaller industries are helping the district's industrial growth.

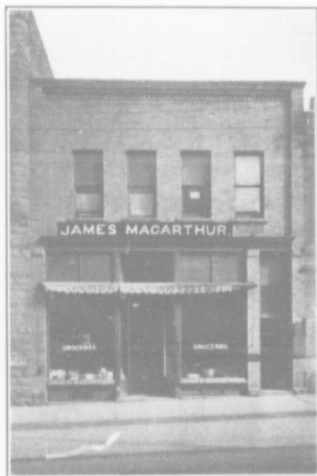
BANKING, INSURANCE, NEWSPAPERS, HOTELS.

OF the three banking institutions which have branches in New Glasgow, the Royal Bank of Canada, occupies an attractive two storey brick building, a picture of which appears on another page. It was erected in 1913, and is one of the most modern banking offices in this section of the Province. It is well lighted and ventilated, has a spacious lobby and with its office fixtures of fumed oak makes an attractive and inviting appearance.

The Royal Bank of Canada, known until 1901 as the Merchants Bank of Halifax, was founded in 1869. In 1910 it acquired the Union Bank of Halifax and with it the

latter's branch at New Glasgow. At present it has 376 branches, a paid up capital of \$12,000,000, reserve funds of \$13,236,000; and total assets of over \$200,000,000 placing it among the largest of Canadian banking institutions.

The Bank of Nova Scotia opened a branch in New Glasgow about fifty years ago, and since then has also established branches in Stellarton, Westville and Trenton—the three former housed in modernly equipped brick buildings. The Bank of Nova Scotia, distinguished for having a reserve fund in proportion to its paid up capital larger than that of any bank in the Dominion, and paying a dividend



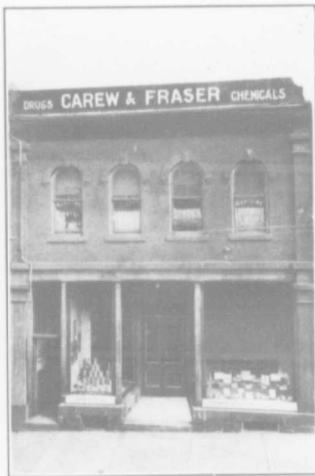
JAMES MACARTHUR, NEW GLASGOW
Dealer in Groceries, Flour, Feed and Produce.

of 14 per cent. to its stockholders, has 189 branches throughout Canada, Newfoundland, West Indies, and the United States.

The Canadian Bank of Commerce first acquired a foothold in Nova Scotia in 1903 when it took over the business of the Halifax Banking Company, with its twenty three branches, one of which was the New Glasgow branch opened in 1867, and has at present 379 branches, with a paid up capital of \$15,000,000, a reserve fund of \$13,500,000, and total assets of \$250,000,000.

INSURANCE.

All the leading Insurance Companies are represented in the district by active and responsible agents. Mr. J. H. Wilson represents the National Life of Canada doing a large life insurance, business, besides representing



CAREW & FRASER. Drugs & Chemicals.
A Pharmacy which stands for "reliability."

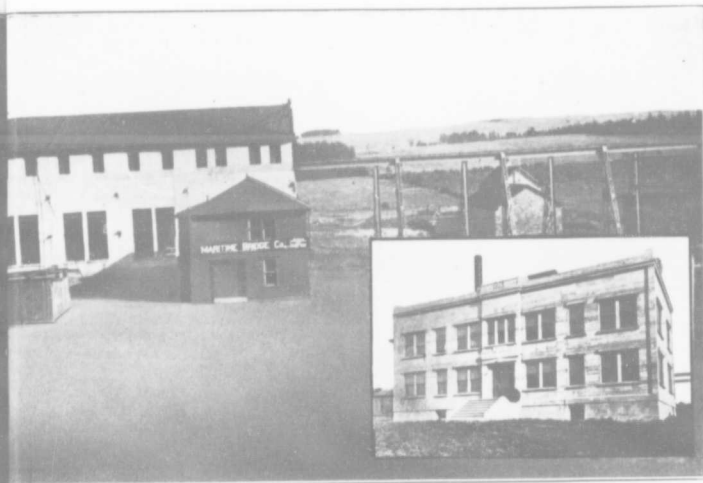
the London Guarantee & Accident Co., Phoenix Insurance Co. of Hartford, and the New York Underwriters Agency. Mert MacKenzie and his associates A.C. MacDonald and I. S. Goode, represent the Great West Life Assurance Co. The Sun Life is represented by Don Cameron while Fraser & Hoyt are investment and insurance brokers. S. R. Gordon specializing in fire, accident, and war risk insurance, represents a number of old country as well as Canadian and American companies, D. McCormick real estate and insurance broker is the agent for the "Queen," "Fidelity Underwriters" and "Protective Underwriters" three of the leading fire insurance companies in Canada.

THE PRESS.

New Glasgow has one semi-weekly, and a daily newspaper,



THE MARITIME BRIDGE CO. LTD., NEW GLASGOW.
The largest Bridge Company in the Maritime Provinces.



Handles all varieties of Structural Steel and Plate Work for Bridges,
Turntables, Girders and Steel Buildings. View of works. Insert, Office.

Walden Photo



J. W. CUMMING & SON, LIMITED, NEW GLASGOW, N. S.
Western Office and Warehouse, Lethbridge, Alta.



Manufacturers of modern Patented Coal Drills, High Grade
Miners' Tools, Mine Cars, etc.

Walden Photo



J. FISHER GRANT, NEW GLASGOW
Men & Boys, Clothing, Hats, Caps and Furnishings.



J. F. DOULL, NEW GLASGOW.
Retail and Wholesale Grocery Dealer.

Stellarton has a semi-monthly, and Westville a weekly paper. Of these publications the oldest is the Eastern Chronicle, founded as early as 1843, in the town of Pictou, and known as the "Eastern Chronicle and Pictou County Advocate." In 1866 the plant was removed to New Glasgow and the name of the paper changed to that of the "Eastern Chronicle" the first number of which was issued on January 4th of that year, giving it the distinction of being the first newspaper printed in New Glasgow. It was issued as a weekly until 1900 when it was changed to a semi-weekly, and as such it continues at present, a fearless exponent of liberal principles in Dominion politics, and judiciously independent in all local affairs.

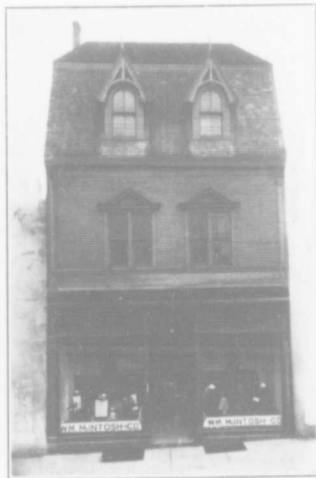
The Enterprise, another weekly, newspaper of New Glasgow, was

founded in 1888 is well edited and enjoys a growing circulation. The Free Lance, published in Westville was established in 1896, and has a circulation of nearly 4000 copies throughout Northern and Eastern Nova Scotia, while the Mining Record, a semi-monthly, published in Stellarton, is devoted primarily to the mining interests of the County in particular, and the Province in general.

The only daily newspaper in the county is the "Evening News" published in New Glasgow. It was founded in 1911. It is an eight page paper, conservative in politics, but locally backing up every movement that makes for the progress of the district. It has correspondents in all sections of the county and is filled with a large amount of up-to-date local news, in addition to the very com-



JAMES EASTWOOD,
Manufacturing Jeweler, New Glasgow,
Retail Jewellery Store, J. Eastwood Block.



WM. McINTOSH & CO. NEW GLASGOW.
Millinery, Est. 1870 Largest Millinery House
in Eastern Nova Scotia.

plete telegraphic service furnished by the Associated Press.

THEATRES.

New Glasgow has a modern theatre building in the Academy of Music, erected in 1912 by the Academy of Music Limited, of which N. W. Mason is President and Manager, Dr. Thomas Keay, Vice-President, H. B. McCulloch, Secretary and A. F. McCulloch, treasurer, which is also erecting a new moving picture theatre seating 1250 persons. The Itzit devoted exclusively to moving pictures is also building another one. The Jubilee in Stellarton, built of concrete, has a fine auditorium, while both Westville and Trenton have attractive moving picture houses.

HOTELS AND RESTAURANTS.

The centre for the district's

hotel business is New Glasgow. The largest hotel is the Norfolk. The Vendome and Parker are well patronized, and all the towns have moderate priced restaurants and boarding houses.

Among restaurants the Tea Rooms occupies the whole of the second floor of the Maritime building, the dining room of which seats one hundred people. Meals and lunches are furnished all hours of the day and evening until 11 o'clock. Wedding, Christmas and other cakes are made to order and all kinds of catering is accepted. Not only the appointments of the dining room, but also the character of the food and service is distinguished for a daintiness and refinement, which has attracted as patrons during the three years of its existence, the representative people of the town and community.



A. & A. CHISHOLM, TRENTON.

Waldren Photo

General Merchants. Dry Goods, Groceries, Provisions, etc. One of the leading general stores in the district.

WHOLESALE AND RETAIL HOUSES.



BECAUSE of the industrial development of the district and its growth in population, and wealth, the towns do a large wholesale and retail business. Thompson & Sutherland Limited, founded in 1872 and incorporated in 1911 with a capital of \$350,000, is one of the largest wholesale and retail hardware houses in Eastern Canada. The business was founded in 1872 by A. C. Thompson. Shortly after he was joined by Mr. Hector Sutherland, who is still its active head.

The firm not only conducts a store in New Glasgow, but also has branch stores in Stellarton, Westville, Glace Bay, Sydney, Sydney Mines, and North Sydney, besides operating a foundry in the

latter place, manufacturing stoves, ranges, hot air furnaces, and hot water boilers, which, with hardware, builders' and plumbers' supplies, they sell not only from their own stores, but also to other retail dealers, employing in their operations more than 100 persons and doing a business of more than \$1,000,000 annually.

The Rhode Curry Co. Limited, of Amherst, N. S., and the largest construction company in the Maritime Provinces, also has a branch warehouse in New Glasgow in addition to those in Halifax and Sydney, carrying flooring, sheathing, sashes, doors, building paper, cement, flue linings and building supplies of all kinds. The company also operates a woodworking factory and structural steel plant.



TRENTON MEAT MARKET, A. H. KING, Proprietor. *Waldren Photo*
Trenton's Leading Meat Market. Meats, Fish, Vegetables and Canned Goods.

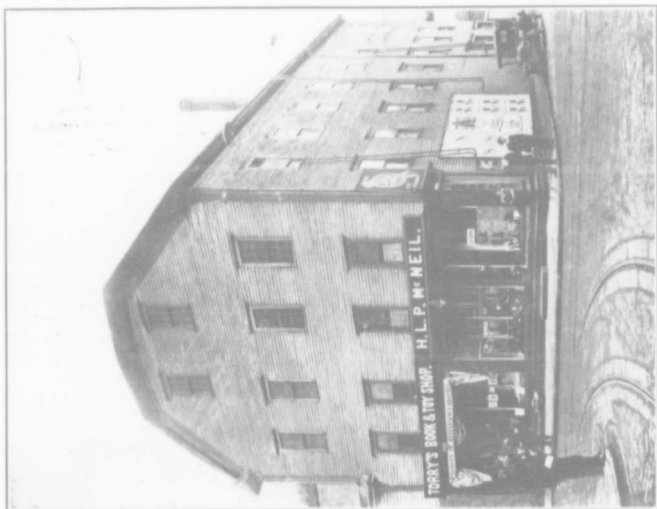
for the fabrication of the structural steel utilized in their extensive building operations largely confined to the Maritime Provinces, where they have erected the Post Office buildings in St. John, N. B., Amherst, Antigonish and Pictou, N. S., and the government railway buildings at St. John and Moncton, N. B., besides many other public and private buildings.

John J. Grant, wholesale and retail building material merchant and contractor, conducts a lumber yard, carrying a million and more feet of lumber, besides shingles, laths, doors, windows, mouldings, pickets and other building materials. He represents the Canada Cement Company and has the sole agency for the Brantford Roofing Co., and employs about fifty people. He has erected such buildings as the Bank of Nova

Scotia, Chambers Block, in New Glasgow, and the dormitory of St. Francis Xavier College at Antigonish, besides other large buildings in and out of town.

The town has also a number of wholesale lumber dealers and mill operators, including such firms as J. D. and P. A. McGregor Ltd., Rood & McGregor and Grant & Campbell, who largely export the product of their mills to the English Market.

One of the largest wholesale and retail drygoods houses in this section of the Province is that of McCulloch & Company of which Mr. H. B. McCulloch is sole proprietor. The firm handles dry goods, ladies' and childrens' ready-to-wear clothing, carpets, curtains, and house furnishing goods, besides conducting one of the most up-to-date ladies' tailoring departments in the Pro-



H. L. P. McNEIL, NEW GLASGOW.
 Bolden Photo
 Boots, Shoes and Rubbers. See signs for "Super Quality" Shoes for Women,
 and "Guth Brand" Shoes for Men. View of McNeil Block.



McCULLOCH & CO.
 Walden Photo
 R. B. McCulloch, Proprietor, New Glasgow.
 Wholesale & Retail Dry Goods, House Furnishings, Ladies', Children's
 and Men's Outfitters.



A. E. HAYMAN, STELLARTON.

Tin-smithing, Plumbing, Heating & General Jobbing

vince, under the supervision of Mr. Milne, a ladies' tailor of wide experience.

Wm. McIntosh & Co. conducts the largest all millinery store in Eastern Nova Scotia, the business having been built up on the principal of giving the latest styles and most reliable goods at moderate prices.

Vineberg, Goodman & Co., another prominent firm, handle dry goods, ladies' ready-to-wear clothing, house furnishings, millinery, boots, shoes, men's clothing and furnishings, trunks and travelling bags, and do a large mail order business extending far beyond the limits of the country; while Douglas & Co., C. L. Beck & Co., McCulloch & Co., and McConnachie & Co., and other dry goods firms, do an increasing business.

The only wholesale grocery house



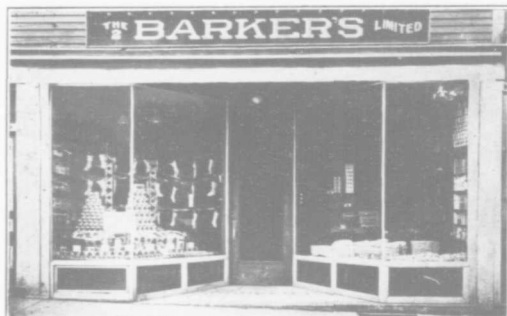
MUNRO BROTHERS, STELLARTON.

Millers, Commission Merchants and Grocers.

in Pictou County is that of R. McGregor; & Sons Ltd., established as early as 1843. The offices and shipping rooms of the company are located in the J. D. and P. A. McGregor Ltd. Building on Provost Street, opposite the post office, in addition to which it utilizes some six warehouses comprising 25,392 square feet of floor space, handling groceries and other provisions sold throughout the eastern part of Nova Scotia.

McKay Brothers have one of the finest meat stores east of Montreal. Window display and show counters, are artificially cooled and its three refrigerating rooms have steel tracks, on which the meat is brought from the waggons and carried as needed to the market.

The firm also conducts a sausage making plant. They own a modern ly equipped slaughter-house, kill-



The TWO BARKERS Ltd., Grocers, NEW GLASGOW. O.R. FRASER, Mgr.
Agent for Overland Automobiles and Imperial Typewriters.



W. W. OSBORNE, NEW GLASGOW.
Osborne's Billiard Parlors, one of the finest Billiard Parlors in this district.



S. KEITH, M. D.,
Health Officer, Town of New Glasgow. Residence and Office.



TRENTON REPAIR COMPANY, GEORGE L. DUNCAN, Mgr.
View of Garage and Machine Shop.



SIVERIGHT & CO. Waldren Photo
 Crockery and Kindred Lines, Showrooms and Office, New Glasgow, N. S.

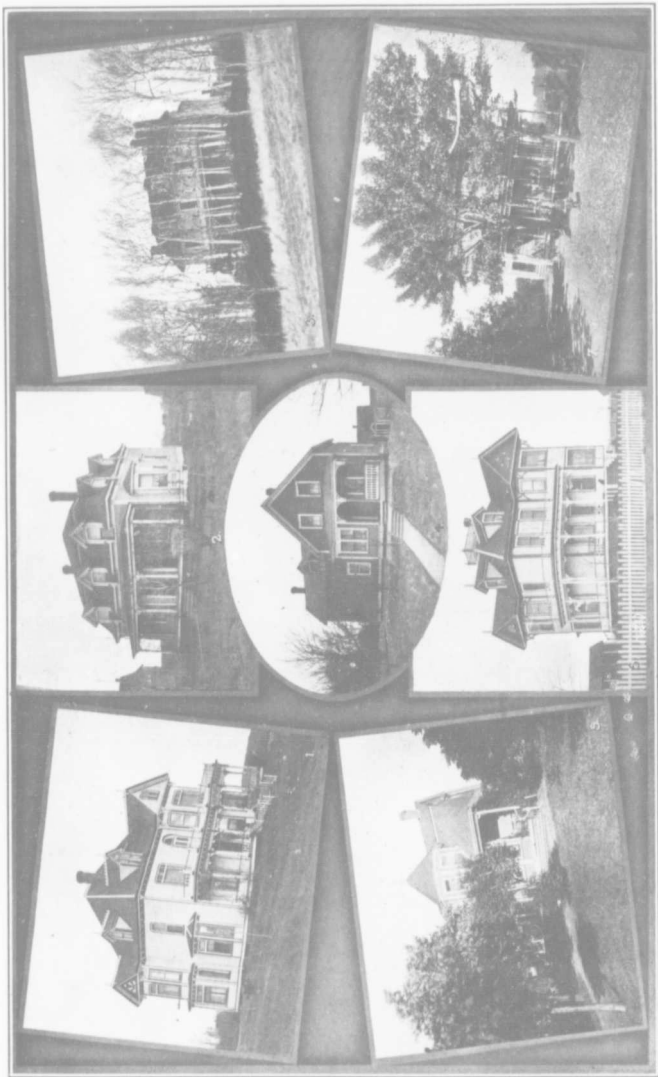
ing about sixty head of cattle a week, besides sheep and poultry, all of which they sell at retail in their own market and at wholesale to a large number of meat dealers throughout the country.

Siveright & Co., importers of Earthenware, China, Glass, Lamps, Fancy Goods and kindred lines, occupy a three story modern brick and stone structure with a frontage of 85 feet on Provost Street, the leading business thoroughfare, erected by them and used entirely for their extensive wholesale operations in Eastern Canada. All purchases are made by their buyer who goes direct to the makers in the United States, Great Britain, the continent and Japan. This house has been established for twenty years and has steadily grown, including among its customers a number of the largest crockery buyers in the Maritime Provinces.

Muir Brothers established in business since 1911, occupy a two story brick store besides a warehouse 50 x 70 feet, and wholesale and retail flour, feed, cornmeal, seeds, hay, oats and provisions, in addition to doing a growing retail grocery business.

Nickerson & Company Limited, a leading wholesale fruit firm of Halifax, conduct a branch in New Glasgow. It is the only distinctively wholesale fruit warehouse in this section of the Province, and because it fills a real need, is doing a large and increasing trade.

James MacArthur, established in 1882, does a large retail trade in groceries and provisions, and an extensive jobbing business in garden seeds, hay, oats, flour, sugar, and provisions, while J. F. Doull, who has conducted a retail and jobbing grocery store for the



Walders Photo

(7) Dr. J. G. Bruce

(6) David Fortier, Sr.

WESTVILLE HOMES.

(5) Dr. A. Ross.

(4) David Fortier, Jr.

(3) Wm. Maxwell.

(2) Thomas Grant.

(1) James McLeod.



GAMMON & WEIR, GENERAL CONTRACTORS, NEW GLASGOW.

Forbes Lake Dam, in Course of Construction. Head of New Glasgow's Gravitation Water System; Height 23 ft., Length 300 ft., Width at Base 190 ft. Completed September, 1912, by Gammon & Weir.

past forty years, and S. M. Lockhart & Co., enjoy a large trade.

The Two Barkers Limited, of Amherst, N. S., have grocery stores in New Glasgow and Stellarton, Mr. O. R. Fraser, the manager represents Barker, McLean Limited of Amherst, for Pictou and Antigonish counties, owners of one of the largest garages east of Montreal, who have the sole dealership of the Overland cars and trucks for the Province of Nova Scotia with the exception of Hants and Halifax Counties.

One of the finest business blocks in New Glasgow is the "Fanjoy," erected in 1913 by Fanjoy's Limited, who also conduct a branch store in Sydney. The building is three stories 90 x 70 feet and has three stores on the lower floor, two of which are utilized by the firm, selling all kinds of men's and boys'

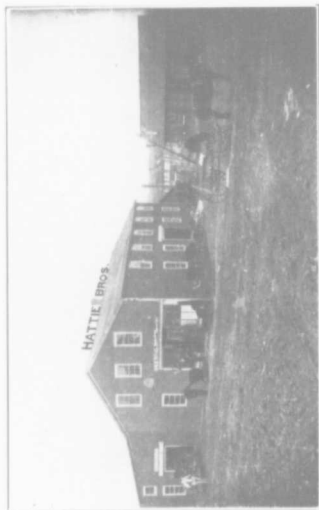
clothing and furnishings, trunks and bags, with a general line of men's supplies.

J. Fisher Grant, who began business in 1882, recently erected a modern two story brick building 30 x 60 feet to carry on his increasing trade in men's and boys' clothing, hats, caps, and furnishings.

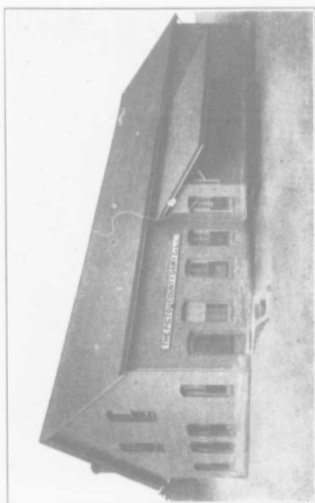
The shoe store of H. L. P. McNeil, is one of the town's landmarks, having been established about sixty years ago. The firm carries one of the heaviest stocks of shoes in the county. They specialize in shoe specialties including the "Royal" and "Gold Bond" shoes for men, and the "Queen Quality" for women, among the three best shoes in the market, and for which they are the New Glasgow agents.

Adam C. Pell's Pharmacy known as the "Rexall Store," is one of the

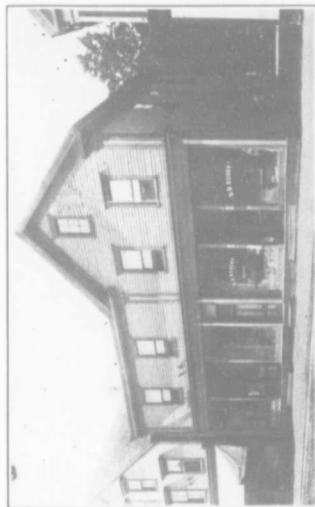
3
3
0
9
7
7
1
0
0
0
3
9
9
5
)
2
1
:



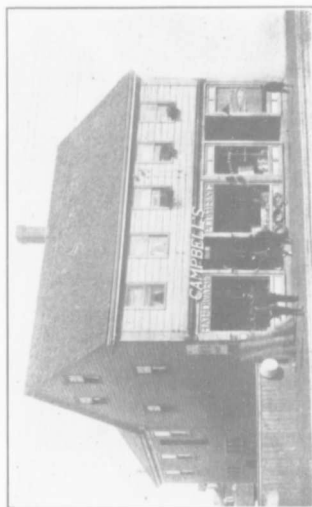
HATTIE BROS., STELLARTON.
Manufacturers of Wagons, Carts and Sleds for the International Harvester Co. and Farm Machinery. N. S. distributors for the International Harvester Co.



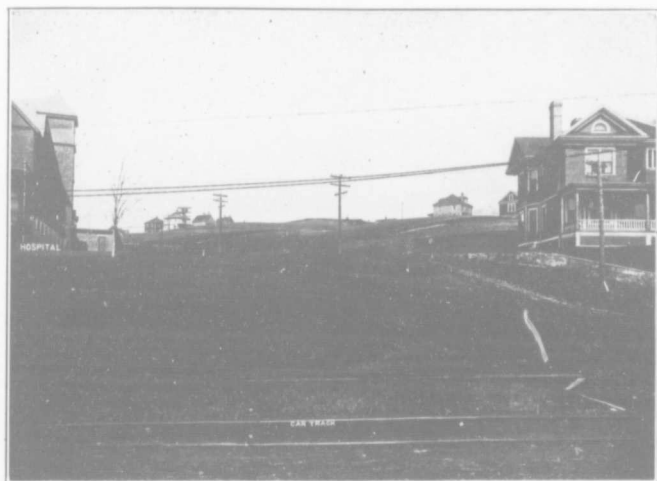
THE PICTOU COUNTY DAIRY CO. LTD., STELLARTON.
A profitable co-operative dairy industry.



B. D. ROGERS, STELLARTON.
Brokers and wholesale dealers in Groceries, Biscuits, Fruits, Confectionery, Staple and Fancy Goods.



CAMPBELL BROS., STELLARTON.
Hardware, Plumbing, Heating, Stoves and Kitchen ware.



SUNNY CREST SUB-DIVISIONS.

Waldren Photo

of which Fraser & Hoyt, Real Estate and Insurance Brokers, are agents.
Office Maritime Building, New Glasgow.

oldest drug stores in Pictou County and Carew and Fraser well and favorably known are the sole agents for the well known Nadruca drugs, both of which, as well as T. H. Cochran's and others, are modern in equipment and services, while W. W. Osborne, located in the same block as the latter, conducts one of the finest billiard parlors in the town. N. W. Mason is a retail and wholesale manufacturer of ice cream and candies. A. B. Philip and D. Silliker & Co., tailors, each enjoy a large patronage, while Ross and Company and Moriarty's conduct up-to-date clothing and mens' furnishing establishments.

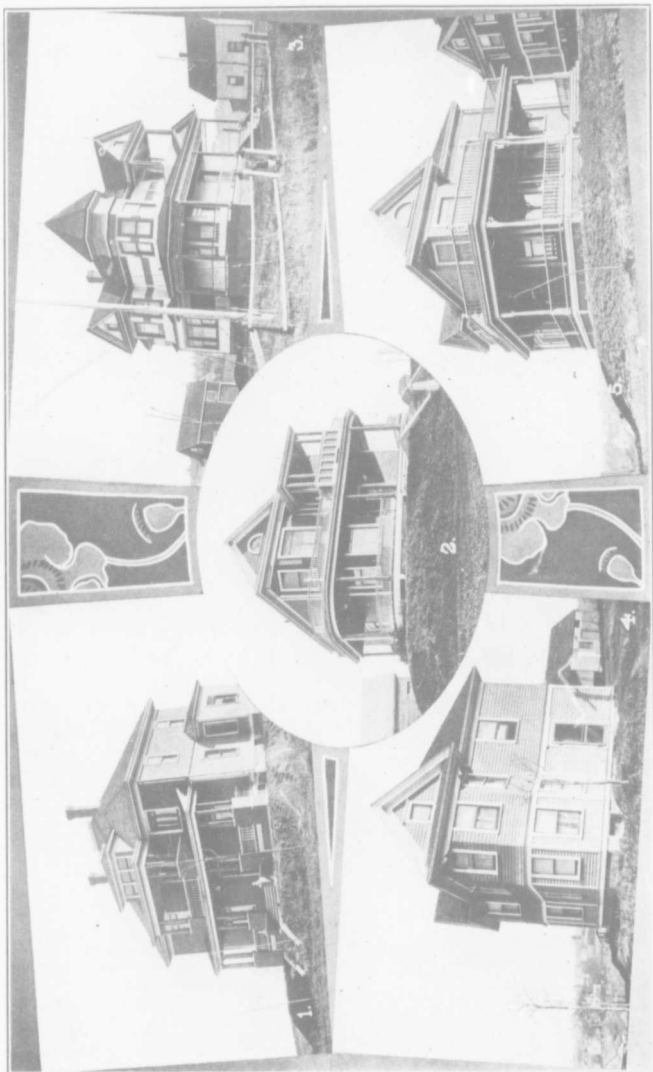
One of the most important stores in Stellarton is the wholesale grocery and provision house of B. D. Rogers, founded in 1872. The

premises occupies some 8000 square feet of floor space wholesaling and retailing groceries, biscuits, fruits, confectionery and fancy goods, selling to more than one hundred and fifty stores in this section of the Province.

Another large firm is Hattie Brothers, manufacturers of heavy team wagons, carts and sleighs, and dealers in farm implements, harness and vehicles, including "Nova Scotia" buggies and wagons. The firm are also the distributors for the International Harvester Co. for the Province of Nova Scotia, handling the Deering and the McCormack farm machinery, their location in Stellarton giving them special advantages of distribution to all parts of the Province.

Campbell Bros. of Stellarton are dealers in hardware, stoves and

13
13
10
9
7
7
1
0
0
0
3
9
9
5
9
2
1
2



(1) Mayor A. T. Logan. (2) Mayor A. T. Logan, owner. (3) E. H. Bumphrey. (4) Presbyterian Manse. D. McKay Reed.

Walden Photo

kitchen ware, and do a large business. Munro Bros. in addition to conducting a grocery store are grain brokers, and own a mill, manufacturing cornmeal, and feed which they sell locally both at retail and wholesale, while A. E. Hayman, does an extensive tinsmithing, plumbing, heating and general jobbing business, while C. R. Paige

runs an up-to-date barber shop.

A. & A. Chisholm, general merchants of Trenton, do a large grocery, dry goods and general retail business. The Trenton Meat Market, owned by A. H. King, does a growing meat, provision and fish trade, both taking a leading place among the districts' retail establishments.

BUILDING, CONSTRUCTION, REAL ESTATE.

AMONG the business blocks recently completed the seven story Maritime Building, a picture of which appears on another page, is the largest, and one of the most modernly equipped office buildings in this section of the province.

The White Building, a brick and concrete fire-proof structure, two stories high, erected this year at a cost of nearly \$20,000, has been leased by F. W. Woolworth Company, the well-known owners of a line of 10 and 15 cent stores. The large clothing firm of Fanjoy's Limited, erected a modernly constructed three storey building in 1914, and J. Fisher Grant completed an up-to-date two storey brick building while the home of the Royal Bank of Canada, recently built is an attractive structure.

During 1915 also the West Side school building was completed at a cost of \$50,000. W. M. Fraser, the contractor and builder, under whose direction it was erected, was also the builder of the Fisher block and the Willow Street School, in Truro, besides other public and private structures.

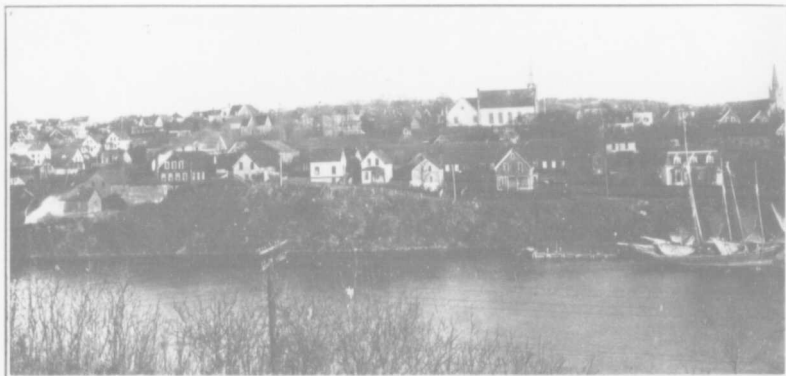
In connection with his building operations he also conducts a

wood-working factory, for the manufacture of the wood building material utilized in his various building operations, in which he employs some twenty-four people.

The new St. John Parish brick school, now in course of construction, is being erected by John Johnston, a well-known local contractor, closely identified with the building operations of the district for the past thirty years. He erected the Potters Brook bridge 128 feet long, with concrete piers 40 feet high, the first built in the county, the last addition to Aberdeen Hospital, the residence of Colonel Thomas Cantley, that of Captain Peter Graham, and other public and private structures.

The Edgerton Building Company, Limited, during the past five years, has purchased several tracts of land in and about New Glasgow and Trenton, on which they have erected some fifty houses. The It:it owners are building a new moving picture house. The Academy of Music, Limited, is also constructing a new theatre, the excavation for which has been executed by Chisholm & Company, a local contracting firm,

3
3
0
9
7
7
1
0
0
0
3
9
9
5
3
2
1
2



VIEW OF NEW GLASGOW FROM EAST RIVER LOOKING EAST.

Waldren Photo

which has recently erected a boiler house, with steel smoke stack eleven feet in diameter and 125 feet high for the Nova Scotia Steel and Coal Company, Limited. The Company has also constructed some 10,900 feet of sewers in New Glasgow, and about 5000 feet of concrete sidewalks, besides other excavating, concrete and steel construction operations. It owns a large stone quarry, a full equipment of hoisting engines, concrete mixer and stone crusher, and in its various contracting operations pays out yearly in wages about \$18,000.

Stellarton also has done considerable building. Park Street school is a beautiful structure. Lynch's Limited have built a modern bread factory. The Pictou County Dairy is a new building. The Jubilee Theatre has only recently been erected, and the Albion Machine Company has re-modeled the skating rink for the manufacture of explosive shells. In Westville the government has erected a new

brick post office building, and the Bank of Nova Scotia has a modern brick bank building. In Trenton A. T. MacKay has built a fine brick block, while in all the towns a large number of dwelling houses have been erected during the past few years.

All the towns during the past three years have done and are at present doing a great deal of construction work. In 1912 Forbes Lake Dam, the head of the New Glasgow water system, was completed. The dam has a height of 23 feet; a width at the base 190 feet, and a length from bank to bank of 300 feet. It contains about 1000 yards of concrete, and 25,000 yards of earth embankment, ripped on the water side with 1300 cubic yards of stone. It was constructed by Gammon & Weir, a well known firm of New Glasgow contractors, who laid down a large part of the town sewerage. They also reconstructed the Trenton reservoir, by having a concrete bottom placed in it, and the sides new-



VIEW OF NEW GLASGOW FROM EAST RIVER, LOOKING EAST

Waldren Photo

ly graded and riprapped, making it one of the cleanest reservoirs in the county.

The firm owns a large stone quarry, and are directors of the Pictou County Supply Company, besides being interested in sand banks at Pictou Landing. They own the only Trestle Pocket Dumping Siding in New Glasgow, and in their various contracting operations employ about 100 men.

REAL ESTATE

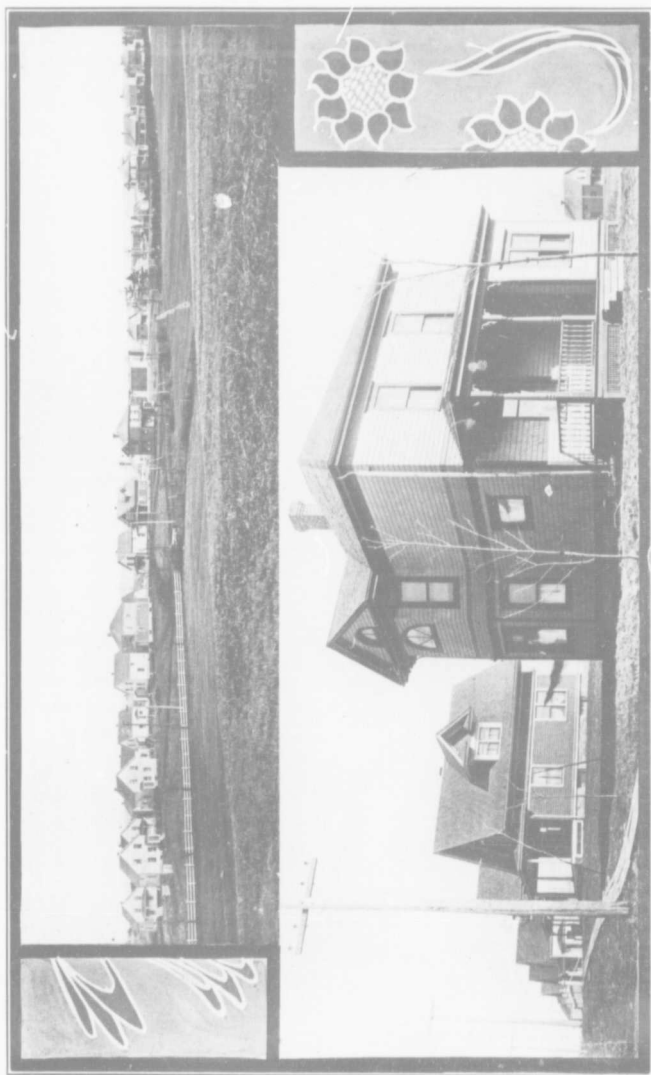
Among the suburban subdivisions that of Parkdale, largely owned by Mr. Walter McNeil, who is one of the largest holders of real estate in Pictou County, is one of the most important. It is attractively situated adjoining New Glasgow, near the South East, less than fifteen minutes walk, and by trolley less than five minutes from the New Glasgow Post Office.

Parkdale has 237 lots. It has already some thirty modern built houses with electric light, water and sewer connections. Located as

it is near the works of the Standard Clay Products, Limited, which employs about 150 men, and with the prices for lots low and payments easy it offers special advantages to those who desire homes near these works, as well as to men working at Trenton, Stellarton and Westville, as the street car connections are such that any part of the district can be quickly and easily reached.

Sunnycrest, of which Fraser & Hoyt are agents, situated on the West Side, on an eminence overlooking the town and the East River, is a subdivision that cannot but recommend itself to the home seeker. Not only is the location one, which, removed from the industrial part of the town, escapes all the smoke and soot from the different works, but is central as well, as it is less than five minutes walk from the Post Office and the tram line runs within a few yards. The houses to be erected on these lots, which face wide streets, are required to be not only of a high

3
3
0
9
7
7
1
0
0
0
3
9
9
5
0
2
1
2



PARKDALE, WALTER McNEIL, OWNER, ONE OF THE MOST ATTRACTIVE SUBURBS OF NEW GLASGOW.
(1) View from hill along East River Road. (2) Attractive House East River Road and Pine Street.

Walders Photo

character, but must stand at least thirty feet from the curbing, in conformity with those already erected in this section of the town. These restrictions, together with the wonderful view and its nearness to the business section, assure to the owner a home under the most favorable conditions. In addition, these lots afford an exceptional investment as they are low in price and are bound to increase in value with the growth of the town, this being the natural direction for the town to build up residentially.

Cold Spring Farm, comprising about thirty-one acres, owned by the A. C. Bell estate is located within the one half mile radius from the Post Office, between Mountain and Little Harbor road, a district embracing one of the most attractive residence sections of the town. A part of the farm has already been subdivided into some one hundred and eighty large lots with ten modernly built houses, facing Alrront Avenue. The water supply is furnished from a spring and reservoir on the farm, while the town sewer extends to the property. Lying on an elevation overlooking the town, and the number of houses constantly growing they make not only fine home sites, but also a good investment.

The "Heights" sites in which are sold exclusively by S. R. Gordon, who also controls a number of other high class properties in New Glasgow and Trenton, is a leading subdivision located in the town of New Glasgow on an eminence overlooking the business section of the town. It embraces about sixty lots and is surrounded by many attractive homes. To meet their

character and style, any new houses built on the property must be at least of a certain price with a restriction compelling them to be located a certain uniform distance from the street, thus assuring the purchaser a property which will give him a home under the most advantageous surroundings.

Along Abercrombie Road, one of the leading streets on the West Side and the select residential section of New Glasgow, is located "Plainfield", within the town limits, about seven-eighths of a mile from New Glasgow Post Office. It consists of 179 acres, some of which are under cultivation while the remainder is utilized as pasture and woodland. It has a good house and modernly arranged barn, 113 feet long. The land is well fenced and drained, and having been constantly fertilized by the herd of dairy cattle, which its former owner, Mr. John MacDonald has maintained for years, it is one of the richest and most productive dairy properties in the county.

The property is owned by L. Connelley and D. McCormick, the latter a well known real estate man of New Glasgow, and is on the market either for farming and dairy purposes, or to be laid out as a sub-division, for which purpose some 60 acres facing Abercrombie Road are especially well adapted. This portion could be sub-divided into some 360 choice well drained lots, all commanding a fine view of the East River, the towns of New Glasgow and Trenton and the surrounding country for miles; and with the building of the bridge across the East River, which is sure to come, following the completion of the



PLAINFIELD, showing shipyards and plant of Nova Scotia Steel & Coal Company, for sale either en bloc or in lots, by D. McCormick, Real Estate Agent.
Arrow in upper left hand corner shows location of Nova Scotia Steel and Coal Company.



Another view of Plainfield. Arrow in upper picture shows location of plant of Maritime Bridge Company.

ship yard now in course of construction will bring them within easy access of the Nova Scotia Steel and Coal Company's and other industrial plants.

Abercrombie Road has bithulethic pavement to within a short distance of the property, and the water connections and electric light extend to it, thus giving it all the conveniences of any lot in the city, although these particular lots may be secured at a much lower price. As the prevailing winds blow from the West and South West, the smoke and soot of the factories of Trenton and New Glasgow is carried away from the property. Its location on one of the finest streets in the town, only a short distance from the street car tracks which will in time be extended past it should make these lots ideal home sites as well as exceptional investments, as the West Side is bound to grow residentially with the industrial development of the district.

What is known as the old Cameron property on the west side has been purchased by the Reid Newfoundland Company, and subdivided into some 300 lots with wide streets, water and electric light.

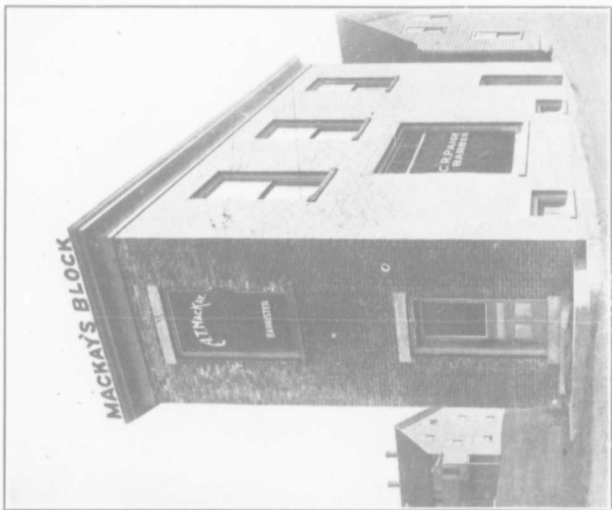
In Trenton J. T. Mackay & Son own two subdivisions, both of which face the locks now in course of construction. One of the subdivisions, situated about three hundred yards from the Canada Car plant, embraces 75 lots each 55x100 feet in size, one-half of which have already been sold. The May Flower park property, a short distance north of the former has 185 lots, 50x100 feet, which also are selling rapidly and offer cheap and attrac-

tive home sites for men who are employed in the Trenton industries.

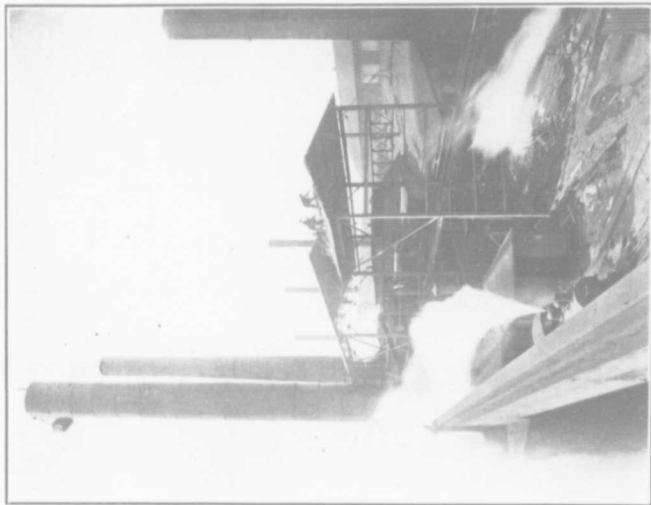
Logan's subdivision of about 300 acres, owned by A. T. and R. C. Logan, and comprising about one-third of the land in the corporation of Trenton, is located directly opposite the plant of the Eastern Car Company Limited. Of the property 100 acres has been laid out into 800 lots 60x112 feet in size each fronted by a street 60 feet wide, and a 16 feet lane in the rear. Duke Street facing the property has water mains, so that water connection may be easily made, with any new house to be erected. The four room school house built in 1914, in addition to a number of attractive homes are located on the property, the lots of which may be bought for from \$100 to \$300, on terms to suit the purchaser.

McColl and Ritchie own a 500 acre tract of land, facing the river and extending in a north easterly direction, which is being reserved for industrial sites, and which with the completion of the locks, the consequent increase in shipping, and the location of new factories must automatically increase the value of every lot located in this section of the town.

In addition to these and other subdivisions which offer lots at a moderate price to the home seeker, the towns have many individual properties, which may be purchased at a reasonable price. Of late, following the making of war munitions the real estate market has become very active, and many properties have changed owners. As an instance it may be mentioned that D. McCormick of New Glasgow one of the most active real es-



J. MACKAY & SONS, TRENTON.
Walden Photo
 Real Estate & Insurance Brokers. Owners of the MacKay & Mayflower Sub-Divisions. View of MacKay Block, A. T. MacKay, Barrister, Owner.



CHISHOLM & COMPANY, GENERAL CONTRACTORS, NEW GLASGOW
 Making a Specialty of Concrete and Steel Work. Dealers in Sand, Gravel, Cement, Brick and Stone. General Trucking. Illustration shows the erection of Shute Stack and Building for the Nova Scotia Street & Coal Co.

tate brokers in the district has placed more than \$150,000 during the past 9 months and he is only one of

others, all of whom predict that the towns are on the eve of a great real estate and building revival.

MANUFACTURING PROSPECTS AND LABOR CONDITIONS.

AS a result of its many natural resources, the district has become one of the largest industrial centres of the province. Nor has it reached the limit of its expansion. The deepening of the East River to Trenton and the completion of the locks, will give it exceptionally fine water transportation, and connect it by deep sea navigation with all parts of the world. The steel, iron, clay products and wood working industries are the direct outgrowth of its inexhaustable natural resources, which are capable of supplying many more factories. Cutlery, soap, fish, glue, piano and wood working factories, tanneries, cement and glass works, crockery, shoe and iron industries, woollen and cloth mills, could be established in any of the four towns with advantage and profit. Industries such as these and others, would receive every encouragement. And while the towns have no fixed policy as to the treatment of industries seeking location, they are willing to consider any industrial proposition on its merits, and if found worthy, to encourage it so as to make its coming advantageous and profitable.

LABOR CONDITIONS.

The four towns have a varied industrial population and employ in the coal mines, railway and factories at present from 5000 to 6000 persons, of whom about 3000 belong

to labor organizations. Of this number about 2300 are members of the Federation of Labor, while the balance have membership in such unions as the United Mine Workers, Brotherhoods of Carpenters and Joiners, Painters and Decorators, Electric Workers, Bricklayers and Machinists Unions, and other organizations. The wages are good and in many cases high, especially among the war munition workers. With such a large industrial population, labor difficulties arise from time to time, but they are as a rule, amicably adjusted and strikes are rare.

Rents are higher than last year on account of the scarcity of dwelling houses, and the great demand for them due to the constant influx of industrial workers. This is especially true of New Glasgow and Trenton. In Stellarton and Westville housing conditions are better. But as all these towns are connected by steam and street railway, accommodation in the latter towns is no great inconvenience, as the rents are somewhat lower. General living conditions are not higher than in other Nova Scotia towns, and low when compared with Upper Canadian cities. The houses generally have garden plots, on which the householder can, if so desired, raise the vegetables and fruits used for his family, thus materially reducing his living expenses.

INDEX

	Pages		Pages
Foreword	3	Humphreys Glass Co	56-63
Historical	5	The Heights	97
New Glasgow, Stellarton	7-9	Intercolonial Coal Co	30-43
Westville, Trenton	11-12	Itzit Theatre	79-93
Government and Finance	15	Johnston John	63-93
Public Improvements	21	Johnson & MacDonald	75
Schools	25	Keith S. M. D.	86
Churches	27	Lockhart S. M. & Co	51-89
Hospitals, Societies, Health, Sports	31	Logan's Subdivision	97
Transportation	35	Lynch's Limited	58-65-94
Natural Resources	39	Maritime Bridge Co	48-49-55
Manufacturing Industries	45	Maritime Building	93
Banking, Newspapers, Insurance, Theatres, Hotels, Restaurants	76	Maritime Jewelry Co	75
Wholesale and Retail Houses	81	Mason N. W.	91
Building, Construction, Real Estate	93	Matheson, I & Co.	73
Manufacturing Prospects	99	Moriarty Jr	91
Labor Conditions		Muir Bros	69-87
Acadia Coal Co. Ltd	42-43	Munro Bros	85-93
Academy of Music	79-93	Munro Wire Works	75
Albion Machine Co	65-94	MacArthur James	77-87
Bank of Nova Scotia	18-76	McColl & Ritchie	99
Barkers, The Two	86-89	McCulloch H. B. & Co	83-84
Beck C. L. & Co	65-85	McCool & Doyle	76
Bell, Adam C	75-89	McConnachie & Co	85
Bigelow & Hood	75	McCormie & D	77-99
Cameron & Fraser Co. Ltd	70-71	McGirr H. G.	63
Campbell Bros	90-91	McGregor J. D. & P. A. Ltd.	65-83
Crockett Bros	76	McGregor R. & Sons	65-85
Campbell's West Side Bakery	53-67	McDonald A.	63
Carr F. A.	75	McIntosh Wm & Co	79-85
Canadian Bank of Commerce	77	McKay Bros	72-85
Canada Tool & Specialty Co	55-63	MacKay A. T.	94
Carew & Fraser	77-91	MacKay J. T. & Son	97-98
Chisholm A. & A	81-93	McNeil H. L. P.	84-89
Cochran T. H.	63-91	McNeil Machine & Motor Co	63
Chisholm & Co	93-98	New Glasgow Steam Laundry	72-75
Cold Spring Farm	97	Nickerson & Co. Ltd	72-87
Colonial Granite Co	70-71	Nova Scotia Steel & Coal Co	44-45-46
Cumming J. W. & Son	48-49-61	Osborne's Billiard Parlors	63-86-91
Dickson's Wetwash	75	Paige, C. R.	93
Doull J. F.	78-87	Paradale	95-96
Drake Francis	70-71	Philip A. B.	18-91
Eastern Car Co. Ltd	50-53	Pictou County Electric Co	37-40
Eastern Chronicle	70-78	Pictou County Dairy Co	73-90-94
Eastwood James	51-73-79	Plainfield	97-98
Eastern Steel Co. Ltd	51-59	Porter D. & Son	57-96
Edgerton Building Co	93	Rhodes, Curry Co	59-81
Enterprise	78	Rogers B. D.	90-91
Evening News	78	Ross & Company	91
Fanjoy's Ltd	73-89-93	Royal Bank of Canada	76-93
Ferguson A. M.	63	Siveright & Company	87
Fraser & Hoyt	77-95-91	Silliker D. & Co	91
Fraser W. M.	55-93	Standard Clay Products Ltd	52-57
Free Lance	78	Steel Furnishing Co	75
Gammon & Wier	89-94	Sunny Crest Subdivision	91-95
Government Railways	28-30-35-37-38-39	Tea Rooms	79
Garrett John E.	72-73	Thompson & Sutherland	80-81
Grant J. J.	61-83	Trenton Meat Market	83-93
Grant D. & Sons	60-69	Trenton Repair Co	75-86
Grant & Campbell	83	Vineberg, Goodman & Co	71-85
Grant J. Fisher	78-89-93	White Wm. D.	67-93
Great West Life	77	Wilson J. H.	77
Gordon S.R.	77-98	Woolworth F. W. Co	67-93
Hayman, A. E.	85-93		
Hattie Bros	90-91		

NOTE.—The district, of which the towns of New Glasgow, Stellarton, Westville and Trenton are the centres, offers exceptional manufacturing advantages. For further information, write to Town Clerks of any of the four towns; Board of Trade, New Glasgow or Business Men's Association, Stellarton, N. S.

INDEX—ERRATA.

	Pages	
Academy of Music	"	81-93
Chisholm, A. & A.	"	82-93
Chisholm & Company	"	93-100
Cumming, J. W. & Son. Ltd.	"	61-78-79
Doull, J. F.	"	80-87
Eastern Chronicle	"	80-77
Eastwood, James	"	51-73-81
Enterprise	"	80
Enterprise	"	80
Evening News	"	80
Grant, J. Fisher	"	80-89-93
Logan's Subdivision	"	99
Maritime Bridge Co., Ltd.	"	55-78-79
McIntosh, Wm. & Co.	"	81-85
MacKay, J. T. & Son.	"	91-100
Rhodes, Curry Co., Ltd.	"	59-82
Tea Rooms	"	81
Thompson & Sutherland, Ltd.	"	48-82