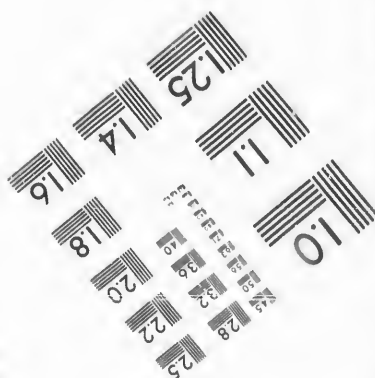
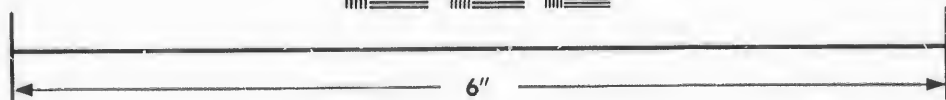
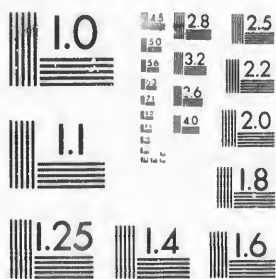


**IMAGE EVALUATION
TEST TARGET (MT-3)**



**Photographic
Sciences
Corporation**

23 WEST MAIN STREET
WEBSTER, N.Y. 14580
(716) 872-4503

**CIHM/ICMH
Microfiche
Series.**

**CIHM/ICMH
Collection de
microfiches.**



Canadian Institute for Historical Microreproductions / Institut canadien de microreproductions historiques

© 1987

Technical and Bibliographic Notes/Notes techniques et bibliographiques

The Institute has attempted to obtain the best original copy available for filming. Features of this copy which may be bibliographically unique, which may alter any of the images in the reproduction, or which may significantly change the usual method of filming, are checked below.

L'Institut a microfilmé le meilleur exemplaire qu'il lui a été possible de se procurer. Les détails de cet exemplaire qui sont peut-être uniques du point de vue bibliographique, qui peuvent modifier une image reproduite, ou qui peuvent exiger une modification dans la méthode normale de filmage sont indiqués ci-dessous.

- Coloured covers/
Couverture de couleur
- Covers damaged/
Couverture endommagée
- Covers restored and/or laminated/
Couverture restaurée et/ou pelliculée
- Cover title missing/
Le titre de couverture manque
- Coloured maps/
Cartes géographiques en couleur
- Coloured ink (i.e. other than blue or black)/
Encre de couleur (i.e. autre que bleue ou noire)
- Coloured plates and/or illustrations/
Planches et/ou illustrations en couleur
- Bound with other material/
Relié avec d'autres documents
- Tight binding may cause shadows or distortion along interior margin/
La reliure serrée peut causer de l'ombre ou de la distorsion le long de la marge intérieure
- Blank leaves added during restoration may appear within the text. Whenever possible, these have been omitted from filming/
Il se peut que certaines pages blanches ajoutées lors d'une restauration apparaissent dans le texte, mais, lorsque cela était possible, ces pages n'ont pas été filmées.
- Additional comments:/
Commentaires supplémentaires:

- Coloured pages/
Pages de couleur
- Pages damaged/
Pages endommagées
- Pages restored and/or laminated/
Pages restaurées et/ou pelliculées
- Pages discoloured, stained or foxed/
Pages décolorées, tachetées ou piquées
- Pages detached/
Pages détachées
- Showthrough/
Transparence
- Quality of print varies/
Qualité inégale de l'impression
- Includes supplementary material/
Comprend du matériel supplémentaire
- Only edition available/
Seule édition disponible
- Pages wholly or partially obscured by errata slips, tissues, etc., have been refilmed to ensure the best possible image/
Les pages totalement ou partiellement obscurcies par un feuillet d'errata, une pelure, etc., ont été filmées à nouveau de façon à obtenir la meilleure image possible.

This item is filmed at the reduction ratio checked below/
Ce document est filmé au taux de réduction indiqué ci-dessous.

10X	12X	14X	16X	18X	20X	22X	24X	26X	28X	30X	32X
					✓						

The copy filmed here has been reproduced thanks to the generosity of:

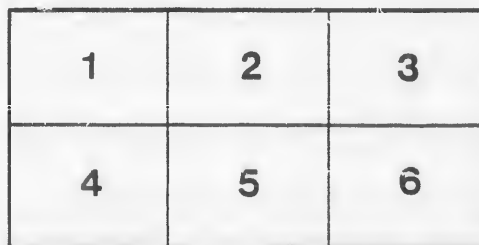
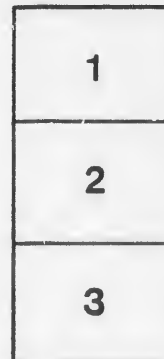
D. B. Weldon Library
University of Western Ontario
(Regional History Room)

The images appearing here are the best quality possible considering the condition and legibility of the original copy and in keeping with the filming contract specifications.

Original copies in printed paper covers are filmed beginning with the front cover and ending on the last page with a printed or illustrated impression, or the back cover when appropriate. All other original copies are filmed beginning on the first page with a printed or illustrated impression, and ending on the last page with a printed or illustrated impression.

The last recorded frame on each microfiche shall contain the symbol \rightarrow (meaning "CONTINUED"), or the symbol ∇ (meaning "END"), whichever applies.

Maps, plates, charts, etc., may be filmed at different reduction ratios. Those too large to be entirely included in one exposure are filmed beginning in the upper left hand corner, left to right and top to bottom, as many frames as required. The following diagrams illustrate the method:



L'exemplaire filmé fut reproduit grâce à la générosité de:

D. B. Weldon Library
University of Western Ontario
(Regional History Room)

Les images suivantes ont été reproduites avec le plus grand soin, compte tenu de la condition et de la netteté de l'exemplaire filmé, et en conformité avec les conditions du contrat de filmage.

Les exemplaires originaux dont la couverture en papier est imprimée sont filmés en commençant par le premier plat et en terminant soit par la dernière page qui comporte une empreinte d'impression ou d'illustration, soit par le second plat, selon le cas. Tous les autres exemplaires originaux sont filmés en commençant par la première page qui comporte une empreinte d'impression ou d'illustration et en terminant par la dernière page qui comporte une telle empreinte.

Un des symboles suivants apparaîtra sur la dernière image de chaque microfiche, selon le cas: le symbole \rightarrow signifie "A SUIVRE", le symbole ∇ signifie "FIN".

Les cartes, planches, tableaux, etc., peuvent être filmés à des taux de réduction différents. Lorsque le document est trop grand pour être reproduit en un seul cliché, il est filmé à partir de l'angle supérieur gauche, de gauche à droite, et de haut en bas, en prenant le nombre d'images nécessaire. Les diagrammes suivants illustrent la méthode.

1824
Revised



VOTERS LIST

—FOR THE—

○ **VILLAGE** ○ **OF** ○ **LUCAN** ○

FOR THE YEAR 1887.



G. A. STANLEY. Clerk



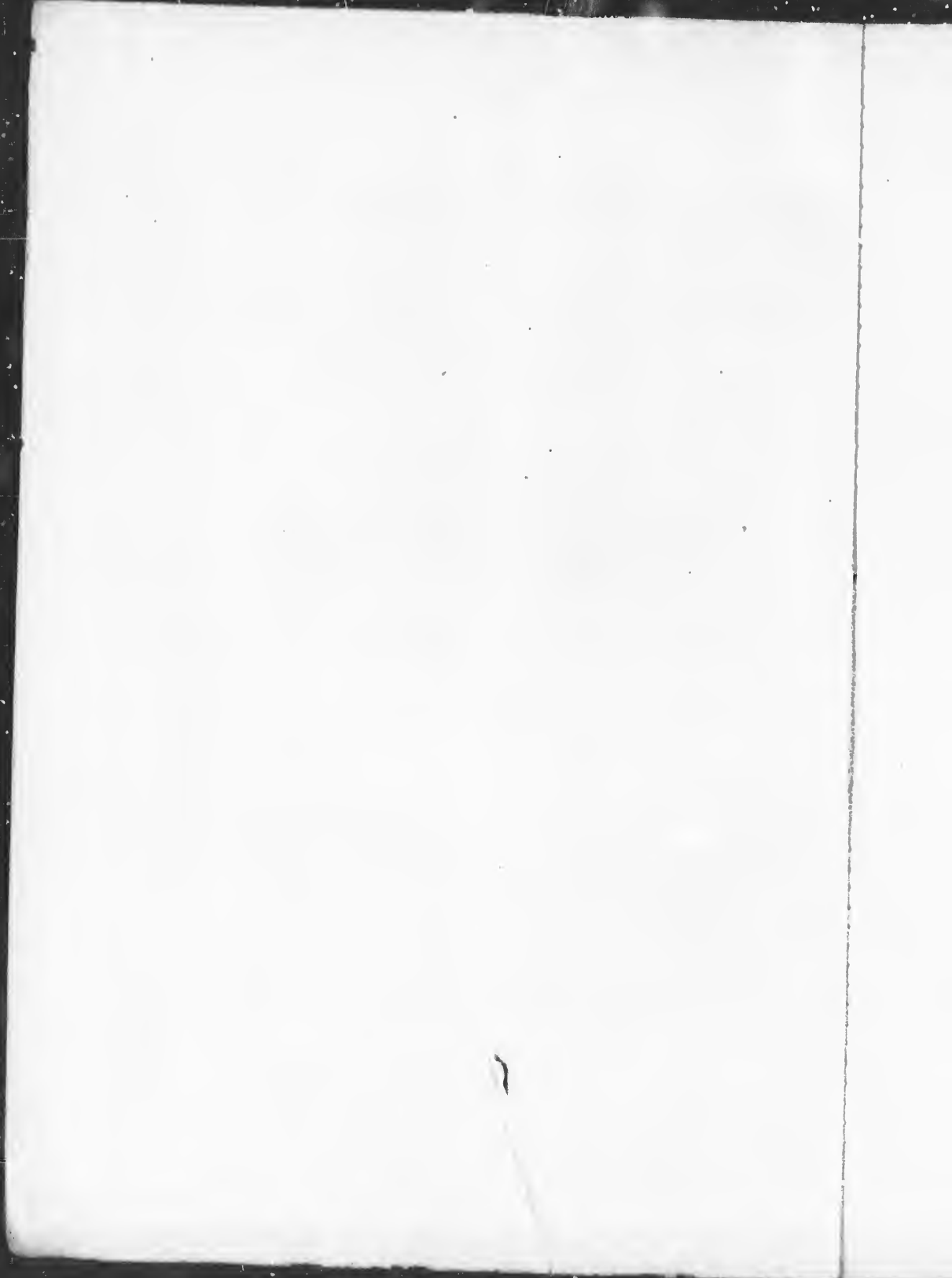
The Sheriff shall, immediately upon the receipt of his copies, cause one of them to be posted up in a conspicuous place in the Court House. The Clerk of the Peace, upon receipt of his copies, shall cause one of them to be posted up in a conspicuous place in his office. Every Public or Separate School Head Master or Mistress shall in like manner post up one of his or her copies on the door of the School House, and every Postmaster shall post up one of his copies in his Post Office.

39 Vic, chap. 11, sec. 2.



ENTERPRISE PRINT, LUCAN.

Received &
filed mch 10/88.
Chas Hutchinson
per



Polling Sub-Division No. 1.

PART 1.—Persons entitled to Vote at both Municipal and Legislative Assembly Elections,

same	No. on Roll	NAME	Con. or Street	Lot or Pt. of Lot.	Class
j	28	Armitage, J R	Princess st	pt 200 & 101	F
j	37	Armitage, J R	Main st	190	F
	63	Atkinson, D	S.L.R.	pt farm 4	F
	63	Atkinson, T	S.L.R.	pt farm 4	F
	194	Armitage, James	William st	8	H
	201	Alexander, John	William st	pt 80	H
	209	Atkinson, Wm	Frank st	22	F
	243	Butler, P E	S.L.R.	pt lot 5	F
	242	Butler, P	S.L.R.	pt farm 5	F
	5	Betts, George	Con. 4	E. pt 61	H
j	57	Brewer, A C	Main st	E. pt 30	F
	54	Butler, Ephrim	Main st	58 & 59	F
	236	Boland, James	George st	63	H
	238	Brampton, Wm	George st	60	F
	239	Brand Fredrick	S.L.R.	pt farm 5	H
	245	Casey, Thos	Butler st	152, 153	F
	241	Consins, James	S.L.R.	G.T.R. station grounds	F
j	229	Caves, Robert	Water st	40	F
	1	Casey, Thos	Con. 4	No. 12	F
	2	Casey, Henry	Con. 4	No. 12	L.O.S
	3	Carty, Con.	Con. 4.	No. 11	F
	19	Clerke, Dr.	Main st	256	F
	26	Collison, Martin	Princess st	58	F
j	27	Cubbins, Thos	Princess st	202	F
j	30	Cathcart, George	Princess st	43	F
j	40	Collins, Robert	Main st	pt 187	H
	52	Creighton, Thomas	Main st	W. pt 30	F
	188	Crouch, Fredrick	William st	2	F
	198	Chisholm, Wm	S.L.R.	pt lot 5	F
j	199	Cain, John	S.L.R.	pt lot 5	F
	248	Caves, Alexander	Water st	45 & 46	F
j	233	Donovan, Wm	George st	72 & 73	F
	49	Drought, Richard	Main st	E pt 29	F
	58	Downey, Rev. John	Main st	pt lot 5	H
j	189	Deacon, John	William st	1	H
	204.	Dight, Noris	William st	pt lot 12	F
	208	Durham, Michael	Frank st	21	F
j	208	Durham, Leonard	Frank st	21	F
j	213	Dagg, John	Frank st	25	F
	7	Eedy, John	Elm st	pt 57	L.O.S
j		Ellwood, Wm	Main st	55, 56, 57	F
	18	Esary, Robert	Frank st	S pt 5	H

	20	Fife, A H	Main st	254	H
	29	Fogerty, Patrick	Princess st	pt 199 & 200	F
J	46	Farrell, John	Main st	2	F
J	186	Fox, John	William st	pt 4	H
J	186	Fox, Robt	William st	pt 4	F
	215	Fife, John A	Frank st	6	H
J	224	Fitzgerald, Gerald	Water st	48 & 49	F
	9	Gleeson, Dennis	Main st	269	H
	187	Gibson, Wilson	William st	3	H
	225	Gibson, Sylvaniaus	Water st	47	F
		Gibson, Herbert	George st	71	F
	12	Hasket, Thos W	Main st	265 & 266	F
	43	Hodgings, Wellington	Main st	pt 1 & 187	H
	42	Hodgins, Jonathan	Main st	pt 187	H
	40	Hodgins, Henry	Main st	187	F
	48	Howe, Daniel	Main st	W pt 28, E pt 29	H
J	50	Hodgins, Thos	Main st	W pt 29	H
	247	Hutchins, Wm	S, L, R.	G. T. R. store house	H
	52	Hodgins, E	Main st	W pt 30	H
	57	Hawkshaw, Thos	Main st	pt lot 6	H
	62	Howard, Thos	S. L. R.	pt farm 4	F
	197	Hodgins, John A	S. L. R.	pt lot 6	F
	202	Hubband Thos	William st	pt 80	F
J	205	Hodgins, George	William st	pt 18	F
	44	Jennings, Ern	Main st	pt 1, 187	F
J	190	Judge, John	William st	9	F
J	191	Judge, J W	William st	9	L.O.S.
	246	Judd, Isaac	Walnut st	112, 163, 171	H
J	10	Kitt, Thos	Main st	267	F
	11	Lusk, James	Main st	268	F
	193	Lowery, Robt	William st	B 8	F
	14	Maye, James	Main st	261, 262	F
	15	Mayo, Wm	Main st	261, 262	L.O.S.
	24	McRoberts, J W	Princess st	203, 26;	H
	25	McRoberts, Alfred	Albert st	65	F
	33	McMachon, John	Main st	pt 191, pt 192	F
J	38	McLean, Robert	Main st	188, 189	F
	39	McLean, Albert	William st	193, 194	L.O.S.
J	41	Maddiarnid, Wm	Main st	pt 187	H
	59	McIlhargy, Dennis	Main st	pt lot 5	F
	210	McLean, Samuel	Frank st	pt 23	F
J	211	McGuire, David	Frank st	pt 23	H
	217	McMillin, Duncan	Frank st	7	H
	8	Nation, Arthur	Main st	270	H
	204	Norton, Thos	William st	pt 18	H
	221	Newton, Thos	Water st	52	H
	232	Neil, Francis	George st	74, 75	H
J	232	Neil, Richard	George st	74, 75	F
	21	O'Neil, R H	Main st	253	F
	22	O'Neil, Daniel	Albert st	64	F
J	35	O'Neil, F A	Main st	pt 191	H
J	47	Orme, J W	Main st	E pt 28	H
	47	Orme, Thos	Main st	E. pt 28,	F
	195	O'Shea, Daniel	William st	10 & 11	H
J	33	Porte, Wm	Main st	pt 191, pt 192	H

34	Forte, George	Main st	pt 191, pt 192	L.O.S
54	Parker, George	Main st	58 & 59	H
230	Russell, Jessy	Water st	35 & 36	F
231	Robinson, Henry	Water st	31 32 33 34	F
223	Ryan, Francis	Water st	50	H
j 4	Sheridan, James	Con. 4	10	F
j 8	Stanley, James	Main st	270	F
j 13	Scott, Adam	Main st	263, 264	F
j 32	Stanley, Wm	Main st	pt 6	F
j 55	Stanley, Bernard	Main st	pt farm 5	F
j 56	Stanley, Charles	Main st	pt farm 5	L.O.S
j 60	Shaw, Thos	Main st	pt lot 4	F
j 62	Shaw, Wesley	Main st	pt lot 4	L.O.S
j 240	Sadlier, James	S.L.R	GTR station grounds	H
j 237	Stanley, Albert	George st	61, 62	F
j 228	Scilly, Robert	Water st	43	F
j 183	Sprout, James	William st	pt 5	H
j 184	Shaver, W N	William st	pt 5	F
j 192	Sprout, Wm	William st	B 7	H
200	Stewardson, James	William st	16	F
201	Scilly, James	Frank st	19	F
j 207	Sprout, Charles	Frank st	20	F
212	Simpson, Joseph	Frank st	24	F
222	Stanley, Thos	Water st	51	F
16	Travitick, Samuel	Main st	260	F
j 18	Tennant, Ezeikel	Main st	257, 258	F
236	Turner, Elijah	George st	83	F
3	Whalen, James	Con. 4	11	H
j 86	Wilson, James	Main st	pt 191, pt 192	H

— 0 —

PART 3.—Persons entitled to Vote at Municipal Elections only.

Joining	No. on Roll	NAME	Con. or Street	Lot or Pt. of Lot.	Class
	220	Dagg, Mrs.	Water st	53	F
	198	Deacon, Mrs.	William st	1	F
	6	Eedy, Mrs.	Main	271, 2, 3, 4	F
	20	Frise, Mrs.	Main st	254	F
	9	Gleeson, Mrs.	Main st	259	F
	17	Hutchinson, Mrs.	Main st	259	F
	201	Hodgins, Mrs.	William st	pt 80	F
	31	Lee, Mrs.	Main st	41	F
	46	Lamb, Mrs.	Main st	pt 1, 187	F
	184	McRoberts, Mrs.	William st	pt 3	F
	196	Meeds, Mrs.	William st	12	F
	25	McRoberts, Mrs.	Princess st	203, 204	F

211	MacGuire, Mrs.	Frank st	pt 25	F
195	O'Shea, Mrs.	William st	12	F
183	Sprout, Mrs.	William st	pt 5	F
219	Stanley, Mrs.	Water st	54	F
62	Howard, Mrs.	S.L.R.	pt farm 4	H

-----0-----

PART 3.—Persons entitled to Vote at Elections to the Legislative Assembly only.

Ward	No. on Roll	NAME	Con. or Street	Lot or Pt. of Lot	Class
	250	Bell, Wm	Main st		wage earner
	252	Casey John	Main st		wage earner
	251	Hoover, John	Main st		wage earner



Polling Sub-Division No. 2.

-----0-----

PART 1—Persons entitled to Vote at both Municipal and Legislative Assembly Elections.

Ward	No. on Roll	NAME	Con. or Street	Lot or Pt. of lot	Class
	71	Armitage, Wm	Main st 103 & 104 ;	Buttler st 126	F
	93	Atkinson, James	Main st	pt 160	H
i	75	Bawden, John	Main st	93	F
	169	Blackwell, Edward	Maple st	136	F
	173	Bryant, Wm	Con. 4	N. pt lot 2	H
j	94	Cann, Lewis	Main st	pt 161	F
	135	Culbert, John	Alice st	E. pt 7	H
	155	Cooper, James	Market st	101	F
	156	Cooper, Richard	Market st	101	L.O.S
	164	Collins, Henry	Market st	129	F
j	166	Clutterham, Charles	Market st	130, 131, 132	F
	165	Collins, E J	Market st	129	L.O.S
	132	Cooper, Wm	Beech st	9	F
j	76	Doupe, Gideon	Main st	W. pt 92	H
	89	Diamond, Wm	Main st	E. pt 153	F
	120	Davey, Rev. R	Princess st	206 & 297	F
j	130	Dagg, Wm	Alice st	12	F
	137	Downham, Peter	Alice st	E pt 165	F
j	139	Dight, Thos	Alice st	167	F
	179	Davis, James	Beech st	60	F
	180	Davis, Wm	Beech st	61	F
	100	Ellis, George A	Main st	pt 7	H
j	118	Edwards, C B	Princess st	37	H
j	167	Endicott, Wm	Market st	163, Beech 164	F
	176	Edwards, John	Con. 4	pt 4	F

85	Fox, Leonard	Main st	87	F
129	Flavin, James	Alice st	13	F
131	Frank, J C	Alice st	W pt 8	H
72	Guest, Robt	Main st	99,100,101,102	Oct
84	Goodacre, Albert	Main st	86	F
91	Grant, J R	Main st	pt 159	H
113	Gillespie, J S	Richmond st	233	F
143	Gillis, James	Alice st	170,171,172,	F
72	Hodgins, John S	Main st	99,100,101,103	F
66	Hall, Joseph	N L R	pt farm 4	L O S
266	Hall, Thos	N L R	pt farm 4	L O S
68	Hodgins, Thos	Main st	111, 112	F
95	Hodgins, R S	Main st	pt 161	F
99	Hodgins, George	Main st	pt 164	H
103	Hossack Thos M. D.	Main st	239	F
107	Hodgins, John B	Main st	250	F
109	Hodgins, John	Con. 4	231	F
110	Howard, Wm	Con. 4	226, 227, 228,	F
127	Haskett, Mitchell	Alice st	15, 16, 17	F
141	Hodgins, Wm	Alice st	E pt 169	H
157	Hodgins, John C	Market st	99	F
158	Haskett, Wm	Market st	97, 98, 66, 67	F
160	Hooper, Wm E	Market st	94, 95, 63, 64	F
161	Hooper, Wm	Market st	94, 95, 63, 64	L O S
162	Haskett, Charles	Market st	89	F
174	Hogg, Wm	Con. 4	E pt 3	F
145	Jackson, John	Alice st	174,175,176,177	F
146	Jackson, John	Alice st	174,175,176,177	LOS
67	Kent, Wm	Main st	113,114,115,116-17	F
149	Kenney, John	Alice st	184	F
150	Kenney, John	Alice st	184	L O S
159	Kinnee, John	Market st	95, 68	H
178	Kinnee, Peter	Maple st	pt 62	F
69	Langford, Joseph	Main st	107-8-9-10	F
77	Lynch, F J	Main st	E pt 91	F
117	Langford, Joseph	Princess st	35, 36	F
171	Langford, Wm	Market st	105-6-7-8	F
73	McCosh, J D	Main st	97 98	F
78	Murdock, Thompson	Main st	90	F
79	Murdock, Andrew	Main st	90	L O S
80	Murdy, John	Main st	81	F
81	McLeod, Wm	Main st	82	F
82	McConnell J H	Main st	84, pt 85	F
86	Matheson, Wm	Main st	88	F
87	McFalls, Alexander	Main st	157, pt 158	H
88	Macklin, Henry	Main st	E pt 158	F
90	McIlhargy, Patrick	Main st	pt 159	F
92	Mara, Edward	Main st	pt 160	F
98	McMillin, Neil	Main st	pt 163	H
105	Mason, David	Main st	246,247,248	H
105	Marshall, James	Main st	246,247,248	F
116	McKinnon, D	Princess st	32	H
219	McLean, Isaac	Princess st	33	H
131	Maguire, John	Alice st	11	F
133	Marshall, James	Alice st	E pt 8	H
138	McRoberts, J H	Alice st	166	F
172	Murley, John	Con. 4	pt 62	F
90	Neil, J W	Main st	pt, 159	H
135	Neil, Albert	Alice st	E pt 7	F
83	O'Shea, James	Main st	E pt 85	F
87	O'Donohue, John	Main st	157, pt 158	F

97	O'Neil, Daniel	Main st	pt 163	F
168	Ollaway, James	Market st	134, 135	F
103	Patrick, Wm	Main st	251, Con 4, 229, 230	F
163	Purley, Daniel	Market st	pt 84 pt 85	F
179	Preston, Samuel	Beech st	60	H
70	Quigley, Wm	Main st	105, 106	H
128	Quigley, Caleb	Alice st	14	F
133	Quarry, W B	Alice st	E pt 8	F
151	Quigley, Wm	Market st	104	F
152	Quigley; Francia	Market st	104	L O 3
111	Rider, Patrick	Con. 4	222, 225, 224, 225	F
136	Rollins, Wm	Alice st	W pt 165	F
153	Robinson, Thos	Market st	103	F
154	Robinson, Wm	Market st	103	LOS
70	Stanley, W R	Main st	105, 106	F
74	Stanley, W E	Main st	95, 96	F
97	Smith, Montgomery	Main st	pt 163	H
101	Sanders, C W	Main st	236, 237, 238,	F
102	Sanders, C A	Main st	236, 237, 238	LOS
114	Sadlier, John	Princess st	31	F
119	Stanley, Geo. A	Princess st	38	F
136	Stanley, Leonard	Alice st	W pt 165	H
100	Thom, J S	Main st	pt 7	F
181	Thurman, Green	Beech st	188	F
177	Williams, John	Maple st	pt 62	H

PART 2.—Persons entitled to Vote at Municipal Elections only.

No. on Roll	NAME	Con. or Street	Lot or Pt. of Lot.	Class
65	Hall, Mrs.	N L R	pt farm 4	H
104	Hodgins, Mrs.	Main st	240	F
196	Haselem, Mrs.	Main st	249	F
111	Cain, Mrs.	Con 4	244, 222, 223, 225	H
112	Davis, Mrs. S	Con 4	219, 222; Princess 219	F
115	O'Mara, Mrs.	Princess st	31	F
116	O'Connors, Mrs.	Princess st	32	F
122	Cole, Mrs.	Princess st	210, 211	F
221	Frank, Mrs.	Princess st	203, 209	F
123	Tracey, Mrs.	Alice st	23, 24	F
124	Hodgins, Mrs. James	Alice st	21, 22	F
125	Dagg, Mrs. J.	Alice st	20	F
126	Harrigan, Mrs.	Alice st	18, 19	F
140	Cathcart, Mrs.	Alice	168	F
141	Gifford, Mrs.	Alice st	E pt 169	F
144	Hodgins, Mrs	Alice st	173	F
174	Brownlee, Mrs.	Alice st	178	F
175	Scilly, Mrs.	Alice st	179, 183	F
159	Kirnee, Mrs.	Market st	96, 18	F
173	Bryant, Mrs.	Con 4	N pt lot 3	F
175	Deacon, Mrs.	Con 4	pt 2	F

PART 3—Persons entitled to Vote at both Municipal and Legislative Assembly Elections.

No. on Roll	NAME	Con. or Street	Lot or Pt. of lot	Class
254	Cathcart, James	Main st	Wage earner	
255	Reid, Wm	Main st	Wage earner	
256	Empy, Alexander	Main st	Wage earner	

CATHOLIC Q12X7/54 DE

I, G. A. STANLEY, Clerk of the Municipality of the Village of Lucan, in the County of Middlesex, do hereby certify that Parts One and Three of the within Voters' List for the year 1887, constitute a correct list of all persons appearing by the last revised Assessment Roll of the said Municipality to be entitled to vote at Elections for members of the Legislative Assembly; and that Parts One and Two constitute a correct list for the same year of all persons appearing on the said Roll to be entitled to vote at Municipal Elections in said Municipality; and I do also certify that the aggregate number of names of persons upon said List who are qualified to serve on Juries is ninety five (95); and I hereby call upon all Electors to examine the said List, and if any omissions or other errors are perceived therein, to take immediate proceedings to have the said errors corrected according to law.

Dated at Lucan this 19th day of September, 1887.

G. A. STANLEY.

Clerk of the aforesaid Municipality of Lucan.
Lucan P.O.

012X7V54 DE

