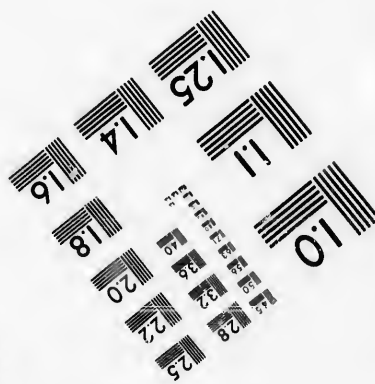
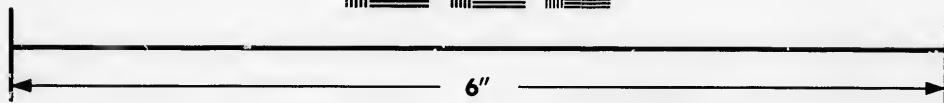
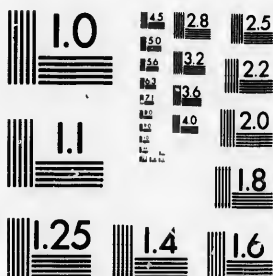


**IMAGE EVALUATION
TEST TARGET (MT-3)**



**Photographic
Sciences
Corporation**

23 WEST MAIN STREET
WEBSTER, N.Y. 14580
(716) 872-4503

1.5 2.8
1.6 3.2
1.8 3.6
2.0 4.0
2.2 4.5
2.5 5.0

**CIHM/ICMH
Microfiche
Series.**

**CIHM/ICMH
Collection de
microfiches.**



Canadian Institute for Historical Microreproductions / Institut canadien de microreproductions historiques

01

© 1986

Technical and Bibliographic Notes/Notes techniques et bibliographiques

The Institute has attempted to obtain the best original copy available for filming. Features of this copy which may be bibliographically unique, which may alter any of the images in the reproduction, or which may significantly change the usual method of filming, are checked below.

L'Institut a microfilmé le meilleur exemplaire qu'il lui a été possible de se procurer. Les détails de cet exemplaire qui sont peut-être uniques du point de vue bibliographique, qui peuvent modifier une image reproduite, ou qui peuvent exiger une modification dans la méthode normale de filmage sont indiqués ci-dessous.

- | | |
|--|--|
| <input type="checkbox"/> Coloured covers/
Couverture de couleur | <input type="checkbox"/> Coloured pages/
Pages de couleur |
| <input type="checkbox"/> Covers damaged/
Couverture endommagée | <input type="checkbox"/> Pages damaged/
Pages endommagées |
| <input type="checkbox"/> Covers restored and/or laminated/
Couverture restaurée et/ou pelliculée | <input type="checkbox"/> Pages restored and/or laminated/
Pages restaurées et/ou pelliculées |
| <input type="checkbox"/> Cover title missing/
Le titre de couverture manque | <input checked="" type="checkbox"/> Pages discoloured, stained or foxed/
Pages décolorées, tachetées ou piquées |
| <input type="checkbox"/> Coloured maps/
Cartes géographiques en couleur | <input type="checkbox"/> Pages detached/
Pages détachées |
| <input type="checkbox"/> Coloured ink (i.e. other than blue or black)/
Encre de couleur (i.e. autre que bleue ou noire) | <input checked="" type="checkbox"/> Showthrough/
Transparence |
| <input type="checkbox"/> Coloured plates and/or illustrations/
Planches et/ou illustrations en couleur | <input type="checkbox"/> Quality of print varies/
Qualité inégale de l'impression |
| <input type="checkbox"/> Bound with other material/
Relié avec d'autres documents | <input type="checkbox"/> Includes supplementary material/
Comprend du matériel supplémentaire |
| <input type="checkbox"/> Tight binding may cause shadows or distortion
along interior margin/
La reliure serrée peut causer de l'ombre ou de la
distorsion le long de la marge intérieure | <input type="checkbox"/> Only edition available/
Seule édition disponible |
| <input type="checkbox"/> Blank leaves added during restoration may
appear within the text. Whenever possible, these
have been omitted from filming/
Il se peut que certaines pages blanches ajoutées
lors d'une restauration apparaissent dans le texte,
mais, lorsque cela était possible, ces pages n'ont
pas été filmées. | <input type="checkbox"/> Pages wholly or partially obscured by errata
slips, tissues, etc., have been refilmed to
ensure the best possible image/
Les pages totalement ou partiellement
obscurcies par un feuillet d'errata, une pelure,
etc., ont été filmées à nouveau de façon à
obtenir la meilleure image possible. |
| <input checked="" type="checkbox"/> Additional comments:/ [Printed ephemera] [3] p.
Commentaires supplémentaires: | |

This item is filmed at the reduction ratio checked below/
Ce document est filmé au taux de réduction indiqué ci-dessous.

10X	12X	14X	16X	18X	20X	22X	24X	26X	28X	30X	32X
					<input checked="" type="checkbox"/>						

The copy filmed here has been reproduced thanks to the generosity of:

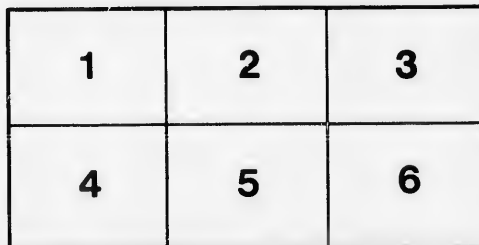
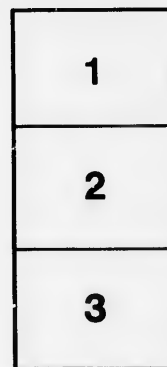
Library of the Public
Archives of Canada

The images appearing here are the best quality possible considering the condition and legibility of the original copy and in keeping with the filming contract specifications.

Original copies in printed paper covers are filmed beginning with the front cover and ending on the last page with a printed or illustrated impression, or the back cover when appropriate. All other original copies are filmed beginning on the first page with a printed or illustrated impression, and ending on the last page with a printed or illustrated impression.

The last record frame on each microfiche shall contain the symbol → (meaning "CONTINUED"), or the symbol ▼ (meaning "END"), whichever applies.

Maps, plates, charts, etc., may be filmed at different reduction ratios. Those too large to be entirely included in one exposure are filmed beginning in the upper left hand corner, left to right and top to bottom, as many frames as required. The following diagrams illustrate the method:



L'exemplaire filmé fut reproduit grâce à la générosité de:

La bibliothèque des Archives
publiques du Canada

Les images suivantes ont été reproduites avec le plus grand soin, compte tenu de la condition et de la netteté de l'exemplaire filmé, et en conformité avec les conditions du contrat de filmage.

Les exemplaires originaux dont la couverture en papier est imprimée sont filmés en commençant par le premier plat et en terminant soit par la dernière page qui comporte une empreinte d'impression ou d'illustration, soit par la seconde plat, selon le cas. Tous les autres exemplaires originaux sont filmés en commençant par la première page qui comporte une empreinte d'impression ou d'illustration et en terminant par la dernière page qui comporte une telle empreinte.

Un des symboles suivants apparaîtra sur la dernière image de chaque microfiche, selon le cas: le symbole → signifie "A SUIVRE", le symbole ▼ signifie "FIN".

Les cartes, planches, tableaux, etc., peuvent être filmés à des taux de réduction différents. Lorsque le document est trop grand pour être reproduit en un seul cliché, il est filmé à partir de l'angle supérieur gauche, de gauche à droite, et de haut en bas, en prenant le nombre d'images nécessaire. Les diagrammes suivants illustrent la méthode.

tails
du
odifier
une
image

rrata
to

pelure,
n à



32X

Canadian Society of Civil Engineers.

COMMITTEE ON PROFESSIONAL STATUS AND CLOSE CORPORATION.

At the Annual Meeting of the Canadian Society of Civil Engineers, held on the 25th January, 1895, the following Resolution in reference to the subject of "Professional Status," was carried :—

"That the Committee shall obtain from the Membership its opinion as to the desirability of obtaining Close Corporation powers, and if the Membership supports the opinion, then the Committee shall forthwith proceed to the work of formulating bills of incorporation from the several legislatures for submission to the Council, and that the Council be authorized to furnish them any legal advice necessary, and that the report be sent to the Council when ready."

What seems to be understood by the term "Close Corporation" is the preventing of any one from using the designation Civil Engineer, or acting as a Civil Engineer in the designing, superintending, or constructing of Engineering Works, of any description whatever, unless he be duly qualified as a Member of the Canadian Society of Civil Engineers, or of some kindred Chartered Association, and the resolution contemplates seeking legislative enactment, as well from the several Provincial Assemblies as from the Dominion Parliament, excluding from Engineering practice all persons not so qualified.

In voting on the Resolution, Members will do well to weigh the possible obstacles to obtaining such exclusive privileges.

The following are some of the points to be thought upon :—

1st. Land Surveyors are specially licensed for the practice of their calling because in every civilized country the guardianship of its landmarks is properly a function of the Government and Law Courts of the country, and to that end, in all questions of boundaries the Licensed Surveyor is *de facto* the sworn servant of the Crown or State. His commission as a surveyor confers no privileges as an Engineer.

2nd. Many important Engineering works in Canada are carried out under Provincial Charters, and not uncommonly by aid of provincial subsidies. Close Corporation powers would, therefore, have to be procured (as the Resolution properly foresees) from each Province, as the Dominion Parliament would not venture to dictate to the Provinces as to the Class, or qualification of persons to be employed on Provincial Works.



3rd. The likelihood of the Provinces conceding the exclusive privilege of Engineering practice to the Canadian Society of Civil Engineers, which is what the Resolution proposes to ask, as also the probability of an application from our Society for exclusive rights, moving the Provinces to incorporate Provincial Engineering Associations to our detriment should be considered.

4th. Before marking his ballot "as to the desirability of obtaining Close Corporation," the voter would do well to ponder the advisability of seeking to obtain it, and the effect of popular opinion against legislative dictation as to whom Companies, Municipalities, or Individuals shall employ to oversee the expenditure of their own money.

5th. The cost of the Society of obtaining, or even taking the step necessary to obtain the legislation contemplated by the Resolution will probably be about One Thousand Dollars, (\$1,000.)

The Resolution would simply seem to submit the following question to the Membership :—

IS IT DESIRABLE TO SEEK FOR CLOSE CORPORATION POWERS ?

Of the desirability of possessing such exclusive rights there will hardly be a division of opinion, but there is a corollary to the question :—"If not likely to be obtained, will it be politic to seek them ?"

The Committee asks each member to weigh the proposition carefully, *pro* and *con*, before affixing his *yea* or *nay* to this Ballot.

(Signed) ALBERT J. HILL,
W. T. JENNINGS,
W. SHANLY,
C. E. W. DODWELL,
ALAN MACDOUGALL,
Chairman.

Mr. George H. Webster does not concur fully with the other members of this Committee. He offers in amendment to the question in the 2nd last paragraph "If not likely to be obtained, will it be politic to seek them" the following:

"If satisfactory legislation is not secured on the first application in any province or provinces, are you willing that the Society should persevere in its efforts to get it ?"

112 Mansfield Street,
Montreal, 13th July, 1895.

[Faint handwritten notes and signatures are visible at the bottom of the page.]

