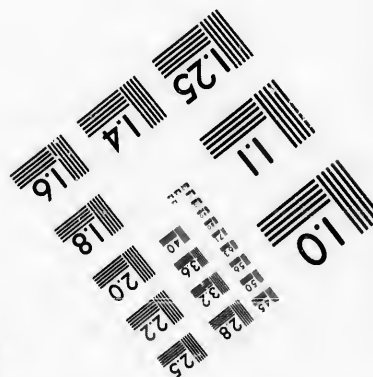
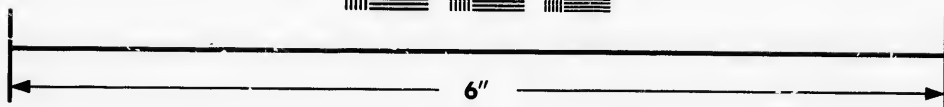
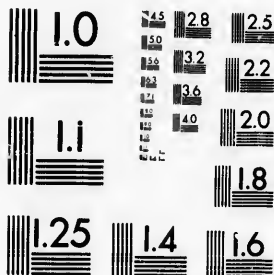


**IMAGE EVALUATION  
TEST TARGET (MT-3)**



**Photographic  
Sciences  
Corporation**

23 WEST MAIN STREET  
WEBSTER, N.Y. 14580  
(716) 872-4503

1.5 1.8 2.0 2.2 2.5  
2.8 3.2 3.6 4.0

**CIHM/ICMH  
Microfiche  
Series.**

**CIHM/ICMH  
Collection de  
microfiches.**



**Canadian Institute for Historical Microreproductions / Institut canadien de microreproductions historiques**

1.0 1.5 2.0 2.5

**© 1986**



The copy filmed here has been reproduced thanks to the generosity of:

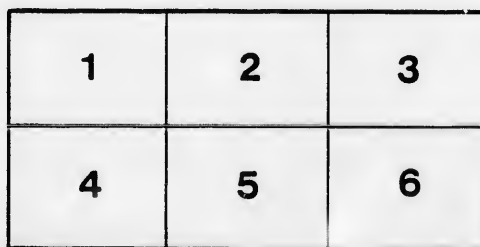
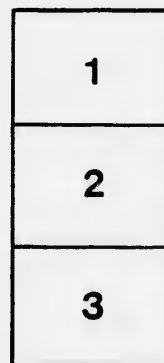
D. B. Weldon Library  
University of Western Ontario  
(Regional History Room)

The images appearing here are the best quality possible considering the condition and legibility of the original copy and in keeping with the filming contract specifications.

Original copies in printed paper covers are filmed beginning with the front cover and ending on the last page with a printed or illustrated impression, or the back cover when appropriate. All other original copies are filmed beginning on the first page with a printed or illustrated impression, and ending on the last page with a printed or illustrated impression.

The last recorded frame on each microfiche shall contain the symbol  $\rightarrow$  (meaning "CONTINUED"), or the symbol  $\nabla$  (meaning "END"), whichever applies.

Maps, plates, charts, etc., may be filmed at different reduction ratios. Those too large to be entirely included in one exposure are filmed beginning in the upper left hand corner, left to right and top to bottom, as many frames as required. The following diagrams illustrate the method:



L'exemplaire filmé fut reproduit grâce à la générosité de:

D. B. Weldon Library  
University of Western Ontario  
(Regional History Room)

Les images suivantes ont été reproduites avec la plus grande soin, compte tenu de la condition et de la netteté de l'exemplaire filmé, et en conformité avec les conditions du contrat de filmage.

Les exemplaires originaux dont la couverture en papier est imprimée sont filmés en commençant par le premier plat et en terminant soit par la dernière page qui comporte une empreinte d'impression ou d'illustration, soit par le second plat, selon le cas. Tous les autres exemplaires originaux sont filmés en commençant par la première page qui comporte une empreinte d'impression ou d'illustration et en terminant par la dernière page qui comporte une telle empreinte.

Un des symboles suivants apparaîtra sur la dernière image de chaque microfiche, selon le cas: le symbole  $\rightarrow$  signifie "A SUIVRE", le symbole  $\nabla$  signifie "FIN".

Les cartes, planches, tableaux, etc., peuvent être filmés à des taux de réduction différents. Lorsque le document est trop grand pour être reproduit en un seul cliché, il est filmé à partir de l'angle supérieur gauche, de gauche à droite, et de haut en bas, en prenant le nombre d'images nécessaire. Les diagrammes suivants illustrent la méthode.

rrata  
o

pelure.  
n à

Oct 1895 m h

## THE HALF-YEARLY MEETING

... OF THE ...

# EAST MIDDLESEX TEACHERS' ASSOCIATION

... WILL BE HELD IN THE ...

## COUNTY COUNCIL HALL

S. W. Corner Dundas and Ridout Streets, London,

... ON ...

**Friday and Saturday, October 11th and 12th, 1895.**

The meeting will be opened at 10 a.m. on Friday, and will close on Saturday at 12.30.

The roll will be called at 12.00, 2.00 and 4.00 p.m. on Friday, and at 9.30 and 12.30 on Saturday. Friday's attendance will be reported to the Trustees.

Among the subjects to be taken are :

The list of "KEY-WORDS" suggested at the May meeting for teaching First Book classes.

BUSY WORK FOR JUNIOR PUPILS,	MISS BLANCHE CULLEN.
TO MAKE SCHOOL PLEASANT,	MISS L. COUSINS.
THE TEACHING OF HISTORY,	MR. J. W. ATKINSON.
SCHOOL ARCHITECTURE IN EAST MIDDLESEX IN 1895,	MR. J. DEARNESS.
PHYSIOLOGY AND HYGIENE,	MR. R. F. WILSON AND MR. W. E. HENDRIE.

Examining READING, WRITING and DRAWING at the Promotion Examinations.

MEMORY TRAINING, REV. B. F. AUSTIN, B. A., B. D.

The Friday evening session will be held in the Court Room, next door to the place of meeting.

The REV. B. F. AUSTIN, B. A., B. D., Principal of Alma Ladies' College, will deliver an address on "*Character Building*." Music at 7 p.m. ; the lecture will begin at 8 o'clock. Inform any people of your section who you think can be present that they are invited to attend.

Principal Austin will speak on MEMORY TRAINING at 3 p.m. on Friday. The hours at which the other subjects will be taken will be announced at the opening.

The marks on Physiology and Hygiene at the last Entrance Examination were lower on the average than on any other subject. Let us raise the standard of work in this subject. Messrs. Wilson and Hendrie will speak upon it from different points of view ; one on Friday, the other on Saturday.

The Public School Leaving Certificates are daily expected from Toronto. These and the High School Entrance Certificates will be rolled, for safe carriage, in the new School Registers for 1896, and distributed at the meeting.

The number of papers required for the November Promotion and Review Examination, in the 2nd, 3rd and 4th classes, will be taken at the 2 p. m. Friday roll-call.

At the Friday forenoon session Mr. Dearness will distribute spare sets of examination papers and answer questions relating to the Entrance, Public School Leaving and Commercial Examinations.

About 4.30 p.m. on Friday the members will have the privilege of visiting and inspecting the confectionery establishment of Messrs. D. S. Perrin & Co., which has been recently enlarged and equipped with the latest machinery. Visits such as this and the one made last spring to the Electric Company's works are not merely to entertain the teachers, but are expected to furnish material for interesting and instructive talks to the pupils.

The Treasurer, Mr. W. H. Liddicoatt, will be present to receive the annual fee of 25 cents from any members whose names are not already credited on his books for 1895.

One copy of this notice is sent for the Secretary of the Board. Invite the Trustees to the meeting.

