



GLENWOOD
CEMETERY

PICTON, ONT.



Established 1873

GLENWOOD CEMETERY

PICTON, ONTARIO

1910



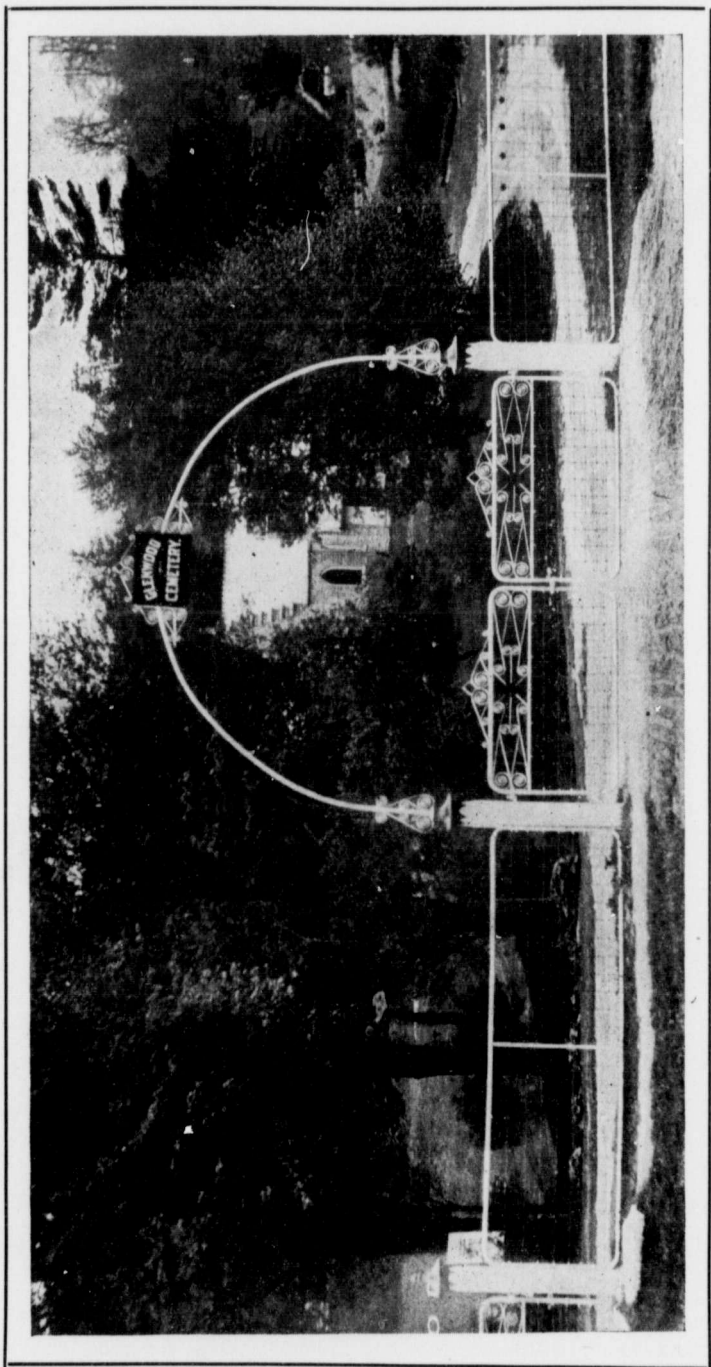
Area 150 Acres

Within the Town Corporation Limits

Two miles of Avenues and Roads

LPF5012
1910
G 558

1207549



GLENWOOD
Cemetery Association

invites your inspection of the
Cemetery

AS A VISITOR

to bring to your attention that
Picton has, in Glenwood, a
beautiful and well kept Rural
Cemetery.

IF AN INTENDING
PURCHASER

that you may be assured of the
most courteous aid in making
your selection.

IF A LOT OWNER

that you may see the growing
beauty of the Cemetery and
co-operate with the Manage-
ment in its care and develop-
ment.

THE Cemetery is within the Town Corporation limits, which means ease of access at all times



SUPERINTENDENT'S OFFICE

A short distance East from within the Entrance Gates.

THERE is always some person in attendance thoroughly qualified to aid in the selection of lots.

April 1914

86 (for 1914)

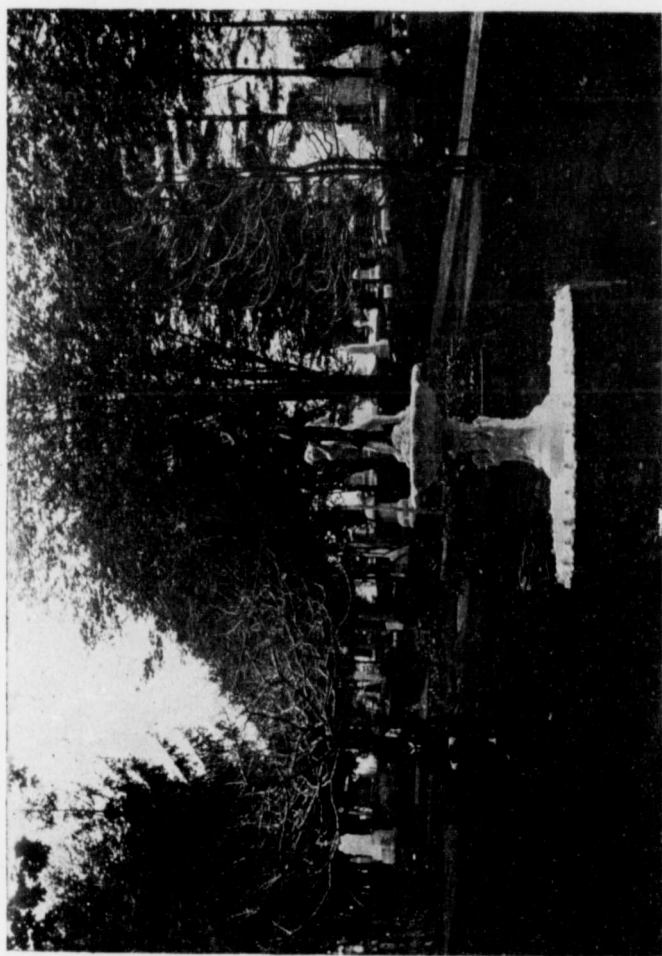
Mr. Connolly (Allen's)

SC/19

LOTS

THE Cemetery is laid out on the most liberal plan with lots varying in size and price to meet the requirements of all patrons.

Lots vary in price according to location and size from fifteen dollars upward.



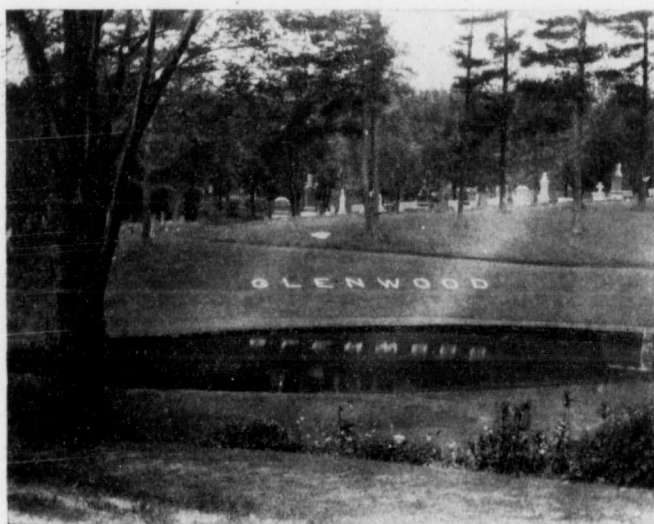
SINGLE GRAVES

CERTAIN portions of the Cemetery have been set aside for single grave spaces. These are all well located and secure good care and attention.

Mr. Commissioner (Allen's) 86 (for 1907) 50/19

IT is a curious fact that while people care fully for any and all contingencies in life, and for the welfare of those depending upon them, they are reluctant to provide for a

CEMETERY PLOT



YARWOOD POND

HAVE you given the matter of selecting a final resting place for yourself and family any consideration and thought? If not, in all probability some one else will have to perform this duty for you, or possibly you will be compelled to do it at time of bereavement when it would be a great relief to have the selection already made.

THEN WHY NOT DO IT NOW?

CHAPEL AND RECEIVING VAULT

THE Mortuary Chapel and Vault add materially to the usefulness and beauty of the Cemetery and serve the comfort and convenience of patrons.



GLENWOOD CHAPEL

THE treatment of the interior has been so designed that those depressed by grief may in some measure be cheered by the brightness about them.



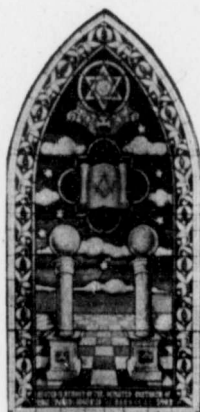
I. O. O. F. Memorial Window

The Vault is constructed with separate compartments.

Sanitary conditions are perfect.

Charges for the use of the Vault are moderate.

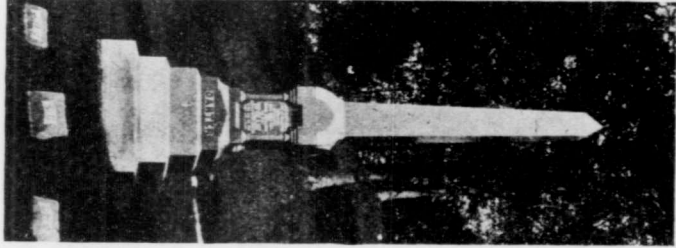
Use of the Chapel is free.



Masonic Memorial Window

AREAS suitable for special requirements in desirable locations are held in reserve for those who desire to erect Mausoleums.

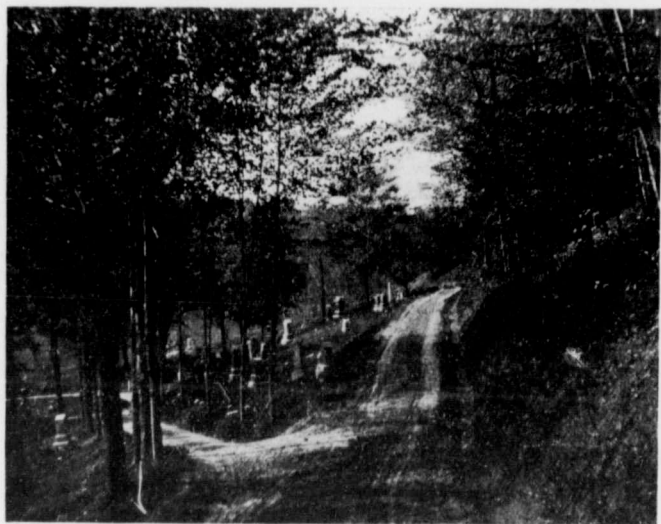
IT is the intention of the Management that GLENWOOD shall be made and kept as beautiful as possible.



THE J. N. CARTER SHAFT



LOOKING WEST FROM SYLVAN MEADOW

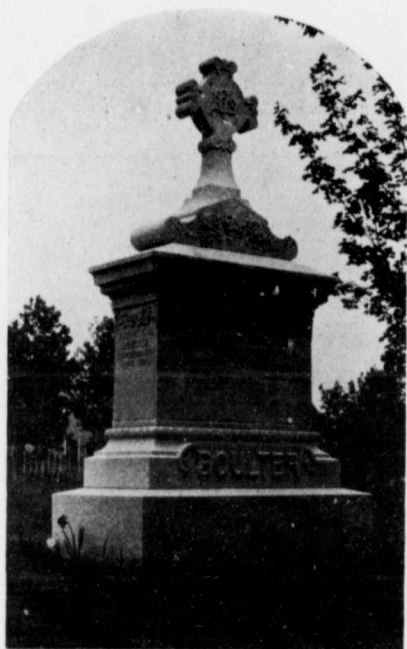


EAST OF PINNACLE HILL

EQUAL care is maintained throughout the Cemetery. A Perpetual Care Fund has been established and is constantly growing, which affords assurance that the Cemetery will always be kept up with no further expense to lot owners who avail themselves of the advantage of Perpetual Care for their plots.

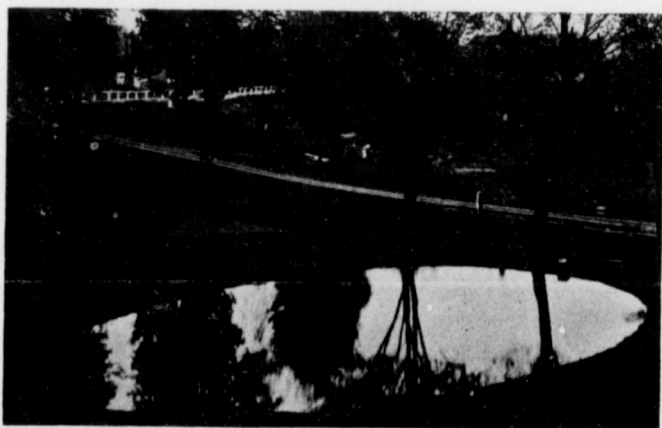


EAST OF RIDGE AVENUE



THE WELLINGTON BOULTER MONUMENT

A COMPLETE System of Records in duplicate is kept in fireproof safe for reference at any and all times.

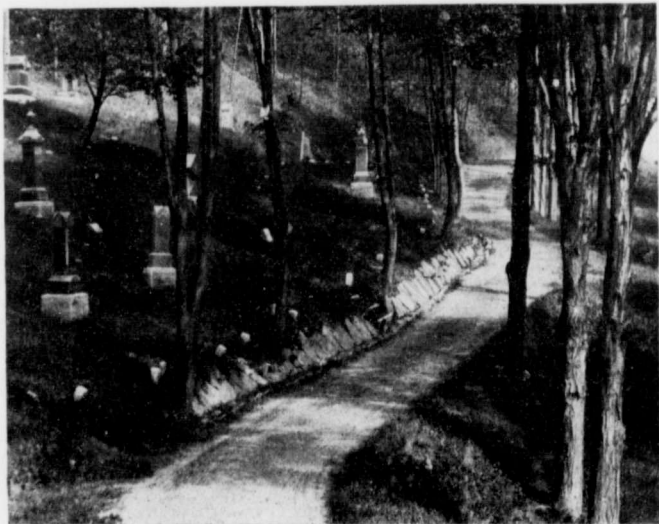


SHADOW POND



BETWEEN RIDGE AVENUE AND SYLVAN MEADOW

EVERY effort has been made to secure rural seclusion and restfulness by preserving much of the natural growth and nature's work of ravines and rolling hills, adding to and improving the same and by planting many varieties of trees and shrubs from the nursery.



SOUTH-WEST VALLEY ROAD

THE Cemetery is under watchful care at all seasons of the year. Accurate Maps and Records, carefully preserved, show the exact location of each grave.



RIDGE AVENUE

THE Cemetery is attractively laid out. Drives of easy grades afford access to all parts of the grounds.

Order and decorum are visible in every detail of management.



NORTH MONUMENT

Perpetual Care of Plots

¶ The Directors wish to particularly call the attention of present plot owners (as well as future purchasers) who have not already availed themselves of the opportunity, that by paying in a certain sum of money, according to

size, their plots will be kept level, mowed and cared for for all time in the future.

¶ This Perpetual Care Fund is kept separately invested in Government Bonds or equally good securities. The interest ONLY therefrom is used for the future care of said plots.

¶ It is therefore cheaper in the end than paying for annual care, besides making sure of your plot being looked after when YOU and your CHILDREN have passed to the Great Beyond.

¶ As a rule the third generation will take but very little interest in the care of or keeping up the appearance of YOUR plot, as our otherwise beautiful Cemetery already bears testimony in the number of plots lacking any care whatever.

¶ Then why not take a Perpetual Care at once? If you keep putting it off, it's possible some one else will have to do it for you, if it is ever done at all.

¶ Any information regarding Perpetual Care

will be gladly furnished by the Superintendent, Secretary-Treasurer, Caretaker or any of the Directors,

¶ The Directors earnestly request all present or future owners of plots to avail themselves of the PERPETUAL CARE, thereby ensuring the future beauty of Glenwood Cemetery.



BOG'S KNOLL—LOOKING TOWARDS ENTRANCE

Glenwood Cemetery Association

PICTON, ONT.

1910

OFFICERS

J. W. Conger - - President
W. G. Sexsmith - Secretary-Treasurer

DIRECTORS

J. C. North
F. T. Wright
M. Adams

Miss Cora Dorland - Superintendent
Frank Braden - - Caretaker

Past Active Officers of Glenwood Cemetery :

Thomas Bog
W. T. Yarwood
J. N. Carter
A. Bristol
W. P. Reynolds
C. S. Wilson

