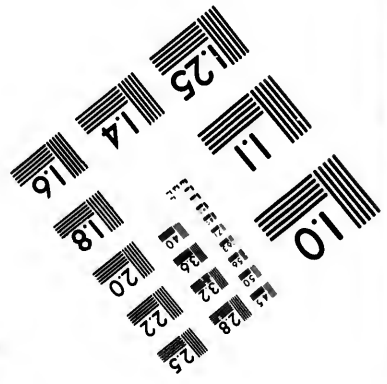
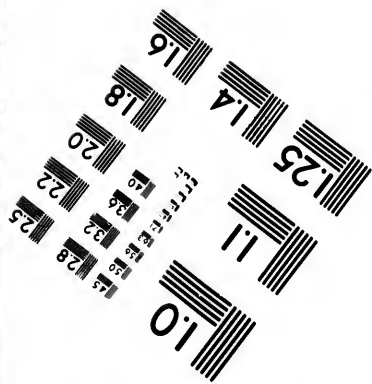
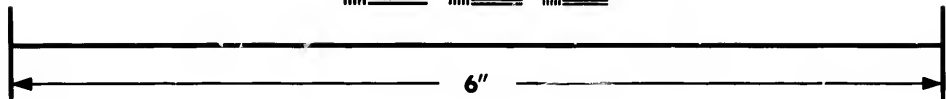
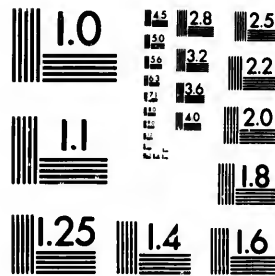


**IMAGE EVALUATION
TEST TARGET (MT-3)**



**Photographic
Sciences
Corporation**

23 WEST MAIN STREET
WEBSTER, N.Y. 14580
(716) 872-4503

Car

10
15
18
20
22
25
1.8

**CIHM/ICMH
Microfiche
Series.**

**CIHM/ICMH
Collection de
microfiches.**



Canadian Institute for Historical Microreproductions / Institut canadien de microreproductions historiques

10
15
18
20
22
25

© 1987

Technical and Bibliographic Notes/Notes techniques et bibliographiques

The Institute has attempted to obtain the best original copy available for filming. Features of this copy which may be bibliographically unique, which may alter any of the images in the reproduction, or which may significantly change the usual method of filming, are checked below.

L'Institut a microfilmé le meilleur exemplaire qu'il lui a été possible de se procurer. Les détails de cet exemplaire qui sont peut-être uniques du point de vue bibliographique, qui peuvent modifier une image reproduite, ou qui peuvent exiger une modification dans la méthode normale de filmage sont indiqués ci-dessous.

- Coloured covers/
Couverture de couleur
- Covers damaged/
Couverture endommagée
- Covers restored and/or laminated/
Couverture restaurée et/ou pelliculée
- Cover title missing/
Le titre de couverture manque
- Coloured maps/
Cartes géographiques en couleur
- Coloured ink (i.e. other than blue or black)/
Encre de couleur (i.e. autre que bleue ou noire)
- Coloured plates and/or illustrations/
Planches et/ou illustrations en couleur
- Bound with other material/
Relié avec d'autres documents
- Tight binding may cause shadows or distortion along interior margin/
La reliure serrée peut causer de l'ombre ou de la distorsion le long de la marge intérieure
- Blank leaves added during restoration may appear within the text. Whenever possible, these have been omitted from filming/
Il se peut que certaines pages blanches ajoutées lors d'une restauration apparaissent dans le texte, mais, lorsque cela était possible, ces pages n'ont pas été filmées.
- Additional comments:/
Commentaires supplémentaires:

- Coloured pages/
Pages de couleur
- Pages damaged/
Pages endommagées
- Pages restored and/or laminated/
Pages restaurées et/ou pelliculées
- Pages discoloured, stained or foxed/
Pages décolorées, tachetées ou piquées
- Pages detached/
Pages détachées
- Showthrough/
Transparence
- Quality of print varies/
Qualité inégale de l'impression
- Includes supplementary material/
Comprend du matériel supplémentaire
- Only edition available/
Seule édition disponible
- Pages wholly or partially obscured by errata slips, tissues, etc., have been refilmed to ensure the best possible image/
Les pages totalement ou partiellement obscurcies par un feuillet d'errata, une pelure, etc., ont été filmées à nouveau de façon à obtenir la meilleure image possible.

This item is filmed at the reduction ratio checked below/
Ce document est filmé au taux de réduction indiqué ci-dessous.

10X	12X	14X	16X	18X	20X	22X	24X	26X	28X	30X	32X
		✓									

The c
to the

The l
possi
of the
filmin

Origin
begin
the la
sion,
other
first p
sion,
or illu

The l
shall
TINUI
which

Maps,
differ
entire
begin
right
requir
metho

The copy filmed here has been reproduced thanks to the generosity of:

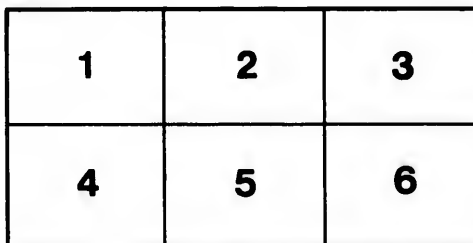
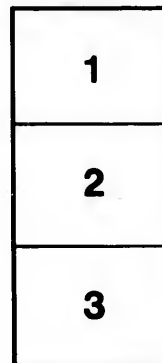
Douglas Library
Queen's University

The images appearing here are the best quality possible considering the condition and legibility of the original copy and in keeping with the filming contract specifications.

Original copies in printed paper covers are filmed beginning with the front cover and ending on the last page with a printed or illustrated impression, or the back cover when appropriate. All other original copies are filmed beginning on the first page with a printed or illustrated impression, and ending on the last page with a printed or illustrated impression.

The last recorded frame on each microfiche shall contain the symbol \rightarrow (meaning "CONTINUED"), or the symbol ∇ (meaning "END"), whichever applies.

Maps, plates, charts, etc., may be filmed at different reduction ratios. Those too large to be entirely included in one exposure are filmed beginning in the upper left hand corner, left to right and top to bottom, as many frames as required. The following diagrams illustrate the method:



L'exemplaire filmé fut reproduit grâce à la générosité de:

Douglas Library
Queen's University

Les images suivantes ont été reproduites avec le plus grand soin, compte tenu de la condition et de la netteté de l'exemplaire filmé, et en conformité avec les conditions du contrat de filmage.

Les exemplaires originaux dont la couverture en papier est imprimée sont filmés en commençant par le premier plat et en terminant soit par la dernière page qui comporte une empreinte d'impression ou d'illustration, soit par le second plat, selon le cas. Tous les autres exemplaires originaux sont filmés en commençant par la première page qui comporte une empreinte d'impression ou d'illustration et en terminant par la dernière page qui comporte une telle empreinte.

Un des symboles suivants apparaîtra sur la dernière image de chaque microfiche, selon le cas: le symbole \rightarrow signifie "A SUIVRE", le symbole ∇ signifie "FIN".

Les cartes, planches, tableaux, etc., peuvent être filmés à des taux de réduction différents. Lorsque le document est trop grand pour être reproduit en un seul cliché, il est filmé à partir de l'angle supérieur gauche, de gauche à droite, et de haut en bas, en prenant le nombre d'images nécessaire. Les diagrammes suivants illustrent la méthode.

A
2/79

JT
20th

RICHELIEU HOTEL



Montreal.

I.B. DUROCHER.


PROPRIETOR.

F5012 [189-3] R528


De



com
Ban
ery
Roy
Ott
St.
and
the
be d
firs,
has
Par
City
base
den
Riv
Mon
Fall
he
jour
to h

 Tourists are warned against misrepresentations by Agents of other Hotels of the location and prices of the RICHELIEU HOTEL.



ONTREAL is one of the most beautiful and attractive Cities in the world, built on the broad St Lawrence, at the foot of the Lachine Rapids, and at the head of ocean navigation, it possesses great advantages as a commercial centre and hence its Public Buildings, Churches, Banks, and Warehouses are remarkably fine. The natural scenery of the vicinity as viewed from the eminences of the Mount Royal Park is very beautiful and varied, the St Lawrence and Ottawa Rivers on either hand bounding the Island of Montreal, St. Helen's Island, opposite the City, a fortified military post and Public park, in the distance are the Belœil Mountain and the Adirondacks, while the white foam of the Lachine Rapids can be distinctly seen toward the west, Mount Royal itself clothed with firs, pines, and maples, and decked with wild flowers and ferns, has so far taken on but few of the artificial adornments of a Park, yet its natural sylvan beauty is unequalled by any other City Park on the continent and the panorama of Montreal at its base suddenly revealed during the summit drive, and as suddenly hidden by the dense woods is in striking contrast to the River and Mountain scenery, stretching away to the horizon Montreal is usually reached by elegant Steamers from Niagara Falls, Toronto or the Thousand Islands, during their trips all the famous scenery of the St. Lawrence by the day light, the journey from New York by Rail occupies 14 hours from Boston 10 hours and from Toronto 13 hours from Montreal to Quebec

180 miles, the tourist can journey either by water in 11 hours or rail in 6½ hours, the White Mountains and Saratoga are but 8 hours distant, and from Montreal direct and speedy communication is established to Ottawa, the Saguenay, Au Sable Chasm, Watkins Glen, Niagara Falls, and all the principal places of interest to the pleasure-seeker. Parties making a lengthened sojourn in Montreal will find it abounding in resources of interest and pleasure: the descent of the Lachine Rapids, the finest of the St. Lawrence, can be enjoyed any morning by taking the train to Lachine at 7.55 a.m., running the rapids and reaching the city two hours afterwards; the drives about Montreal, in the Mountain Park, around Mount Royal, and along the banks of the St. Lawrence and Ottawa Rivers, afford delightful views unsurpassed in America. The City possesses good Theatres which engage the best New York Companies, and the visitor will find a collection of pictures worthy of inspection in the new Art Gallery.

Montreal is particularly attractive in the Winter season: the weather is sunny and bracing, and the sleighing, skating, tobogganing and curling, are enjoyed in perfection, many score of parties from New York, Philadelphia and Boston, come North every winter to enjoy the sports and pastimes, and the number of such visitors increases year by year. The Winter Carnival of Feb. 1884 with its attractions of Ice Palace, Masquerades, Snow Shoe Procession, and other Winter sports, proved so successful that the festival will be repeated next Winter with new and attractive features of interest.

The following are amongst the principal places of interest: City Hall, New Court House, Post Office, French Cathedral, Bank of Montreal, Viger Square, McGill College, English Cathedral, Church of Notre Dame de Lourdes, Jesuit Church, Grey Nunnery, Victoria Bridge, Hochelaga Convent, Le Grand Séminaire.

F

T
city o
long
Vince
comp
over
that c
buildi
Panor
ings,
in the

T
house
to \$3.
PLAN
la car

T
to rec
the co

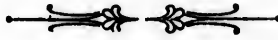
O
and co

T
tions o
city th

ISI

N.
Trains

RICHÉLIEU HOTEL



THE above is the only FIRST-CLASS HOTEL situated in the centre of the city of Montreal kept on the American and European plans—a necessity long desired so by the travelling public. The Hotel now extends from St. Vincent Street to Jacques Cartier Square, forming the largest and most complete Block of Buildings in the city. It contains accommodation for over **400 GUESTS**, with every possible modern convenience and luxury that careful thought can suggest, and has, situated on the roof of the main building, a Garden with Pavilion—from which guests can obtain the finest Panoramic View of the City, Mountain, River St. Lawrence and surroundings, thus making this Hotel by far the most preferable resort for Tourists in the city of Montreal.

THE TERMS of this Hotel will be found as reasonable as any first-class house on the continent, and are as follows:—AMERICAN PLAN, from \$2.50 to \$3.50 per day; rooms *en suite*, with bath attached, extra. EUROPEAN PLAN—Rooms from One (\$1) Dollar per day upwards. RESTAURANT *à la carte*.

Tourists will find on every Boat one of our Agents, who will be honored to receive any orders and make any special agreement to secure them all the comfort required.

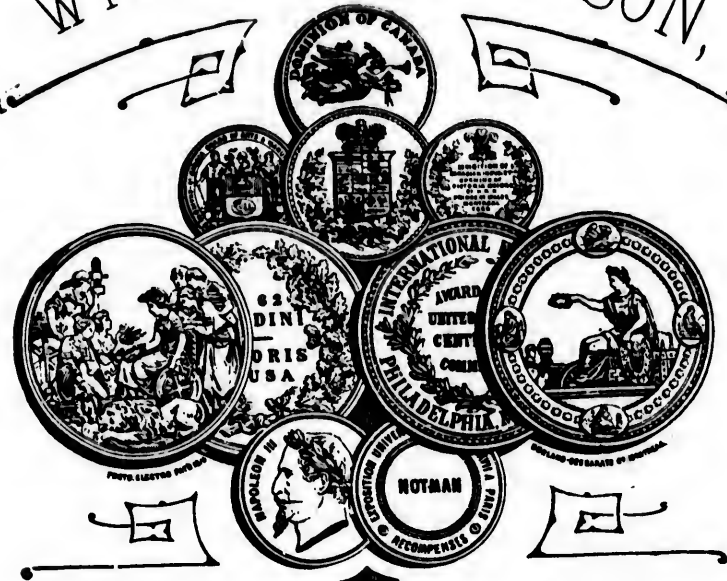
One visit is respectfully solicited to convince the public of the comfort and completeness of our arrangements.

Tourists are Specially Warned against misrepresentations of interested parties, this being the only really First-Class Hotel in the city that is conducted on the European and American principle.

ISIDORE B. DUROCHER, PROPRIETOR.

N.B.—The 'Busses of the Hotel will be found waiting the arrival of all Trains and Steamers.

WM. NOTMAN & SON,



Photographers

→ TO THE ←

QUEEN

17 Bleury Street,

MONTREAL.

A feature worthy of notice is the PARLOR NO. 116, at the East End of the Grand Corridor, Windsor Hotel.

DI
I
D
A sol
S
FI
Best
Fi
REA
OP
288

DRY GOODS PALACE.

H. & H. MERRILL'S

ESTABLISHED 1845.

Direct Importers.

A select assortment of the following Goods constantly on hand viz :

**SILKS, SATINS, BROCADES,
SILK VELVETS, PLUSHES,
VELVETEENS, &c.**

FIRST CHOICE FRENCH KID GLOVES
FOR LADIES AND GENTLEMEN.

HOSIERY :

Best English Makes in Silk, Spun, Plated Silk, Lisle, &c.
and Cashmere Stockings.

First Quality Silk Underwear 6, 8, 12 and 16 Threads, for
Ladies and Gentlemen.

REAL LACE GOODS, HANDKERCHIEFS, SHAWLS, PAISLEY'S
OPERA SHAWLS, SCARFS, TRAVELLING WRAPPERS, &c.

PARASOLS, UMBRELLAS, RUBBER CIRCULARS, &c.

IN GREAT VARIETY.

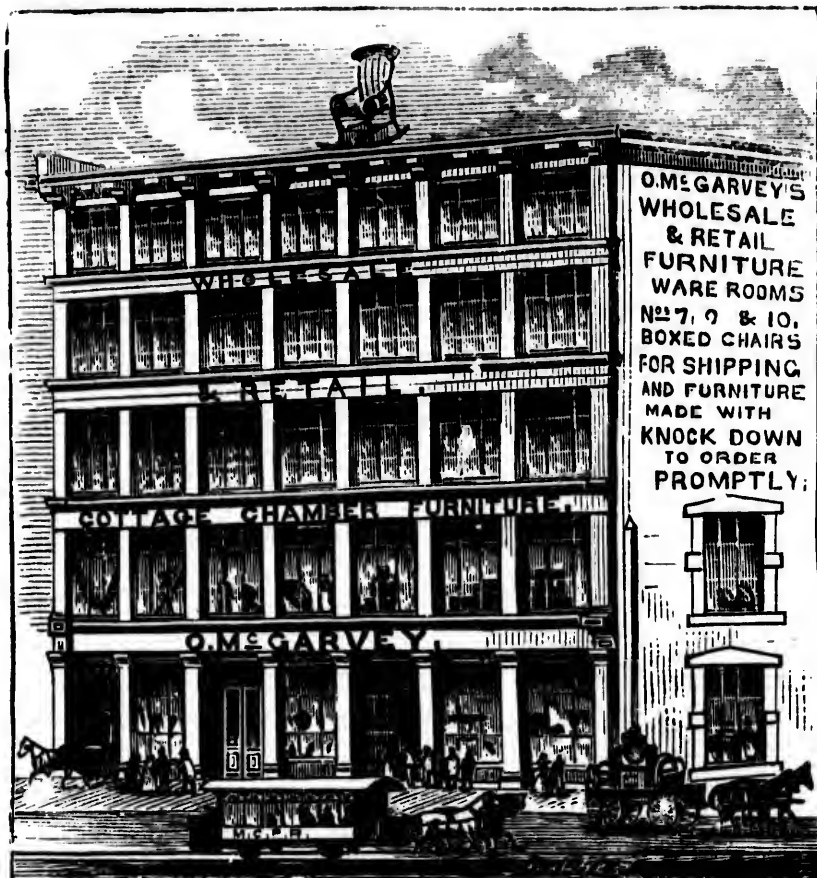
H. & H. MERRILL,

288 and 290 NOTRE DAME STREET,

(Near Notre Dame Church,)

MONTREAL.

OWEN McGARVEY & SONS,
Wholesale and Retail Furniture Warerooms.



Established in 1842, and for the past 12 years the oldest Furniture House in the city. Kept constantly on hand the largest, best assorted, and acknowledged by all the newest styles and cheapest, quality considered, and as they make the Parlor, Chamber, Dining Room and Library Suites a specialty, the prices range from 75, 100, 150, 200, and up to 450 Dollars for Parlor suites, and from 25, 30, 35, 40, 45, 55, 75, 100, 150, 200, 300, 450 and up to 750 Dollars. Library and Dining Room Sets in proportion, prices according to style and finish. Also, a very large stock of Bedsteads of 30 different styles. Our stock of Chairs is seldom under 15,000 to 20,000, and from 1,000 to 2,000 Bedsteads for wholesale only, at our old stand,

7, 9 & 11 Notre Dame, near McGill Street, MONTREAL.

LE SYNDICAT CANADIEN.

DUPUIS, DUPUIS & Cie.,
605-RUE STE-CATHERINE, -605

COIN DE LA RUE AMHERST, (A LA BOULE D'OR.)

Est la Maison par excellence pour les

Marchandises Sèches,
MODES ET NOUVEAUTÉS.

Tout le monde y est également bien servi.

Leur système d'un seul et bas prix leur a attiré une clientèle, qui est toujours heureuse de les encourager.

Cette Maison qui est la seule à Montréal composée de neuf associés, est une garantie que les pratiques seront servies avec attention.

L'avantage qu'ils ont d'acheter directement des Manufactures (car un des associés est spécialement chargé de faire les achats,) les met en position de vendre bon marché.

Ceux qui ont l'occasion de venir à la ville pour faire leurs achats sont respectueusement invités à leur faire visite, et ils sont certains d'avoir satisfaction.

UNE SPÉCIALITÉ :

Tapis Bruxelles, Imperial et Tapestry.

PRELATS

Anglais, Américains et Canadiens.

Les paquets sont portés aux Vapeurs, où au Dépôt des Chemins de Fer. sans charge extra.

Canadian Pacific Railway.

THE NEW AND POPULAR ROUTE.

NIAGARA FALLS TO MONTREAL.

For Northern and Eastern Bound Pleasure Travel, including :

TORONTO, the Queen City of the West.

The Midland Counties of Ontario.

OTTAWA, THE CAPITAL OF THE DOMINION.



AND A CHOICE OF EITHER

THE PICTURESQUE OTTAWA RIVER with its beautiful Lakes,

—OR—

THE GRAND OLD ST. LAWRENCE, with the entire Chain of Rapids

Be sure your Tickets read via this Line

ON SALE EVERYWHERE.

D. McNicoll, G. P. A. Ontario Division, Toronto.

GEO. H. HIBBARD, Asst. G. P. A., Eastern Division. Montreal.



CENTENNIAL PRIZES. GOLD AND BRONZE MEDALS.

LANTHIER & CO.,
Hatters and Furriers,
No. 1663 NOTRE DAME STREET, MONTREAL,

On hand: *Russian Furs* of the finest quality, personally selected: *Royal Russian Sable, Ermine, &c.* and *Hudson Bay furs, Snow-Shoes, Moccasins,* in great variety.

BRILLIANTLY LIGHTED FUR SHOW-ROOMS ALWAYS OPEN.

ROSAIRE ROY & CO.

Merchant Tailors,

9 ST. LAWRENCE STREET, MONTREAL.

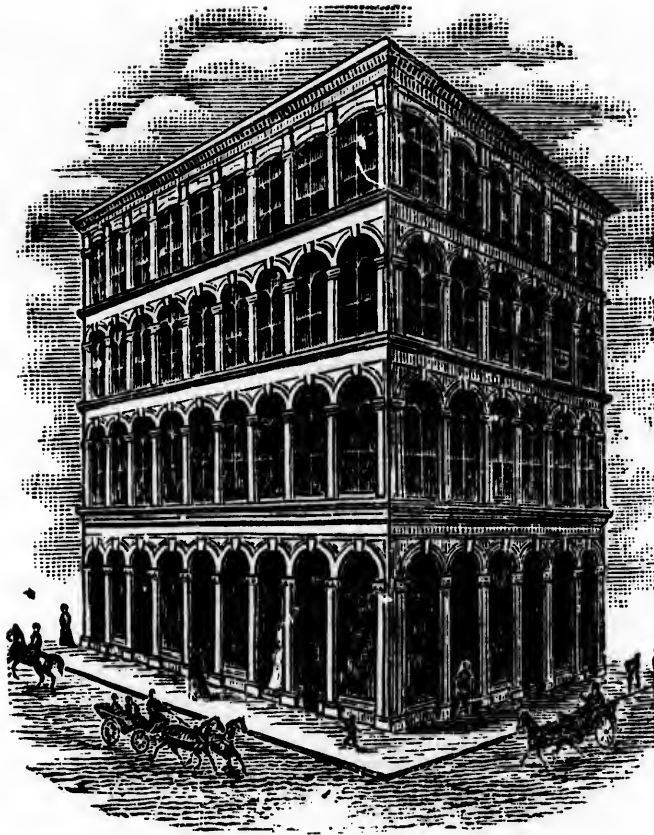
NOTHING delivered if not perfect FIT.

All orders executed on 24 hours notice.

IMPORTED GOODS ONLY.

SPECIALITY:—DRESS SUIT.

LADIES' GARMENTS MADE TO ORDER.



JOHN MURPHY & CO.,

IMPORTERS OF ALL KINDS OF

DRY GOODS.

1781 and 1783 NOTRE DAME STREET,

105 107, 109 and 111 ST. PETER STREET,

MONTREAL.

quel
Les
cent
cun
Or, c
J
char
Ven

760

N.B.
s
e

T

Oak

»‡ DENTISTE !! ‡«

Le Dr. VALOIS se charge de réparer tout Dentier n'importe de quelle manière il est cassé, de le remettre aussi bon qu'un neuf. Les Dents extraites par un nouveau procédé, sans douleur, pour 50 cents, ce qui est préférable au Gaz, au Chloroforme, etc., et sans aucun danger quelconque.

Plombage de Dent en Argent, 75 cents : en Ciment, 50 cents ; en Or, de \$1.00 en montant.

Je fais un Dentier complet de première qualité pour \$10. Je ne charge rien pour extraire les Dents lorsque je fais les Dentiers.

Venez me faire une visite et examiner mon ouvrage qui est garanti.

Dr. M. F. E. VALOIS, Dentiste,

760 RUE STE-CATHERINE, EST, près de la Chapelle Notre-Dame de Lourdes.

MONTREAL.

N.B.—Toujours en mains la Célèbre Poudre à Dent VENNOR, qui sera expédiée à n'importe quelle adresse sur réception de 25 cents en argent ou en timbre de poste. *On demande des Agents.*

J. EVELEIGH & CO.

MANUFACTURERS OF

Trunks, Valises and Bags,

Office and Sample Rooms :—370 Notre Dame Street,

Factory :—Corner St. Elizabeth and Vitre Streets.

MONTREAL.

*Oak-Tanned Solid Trunks and English Portmanteaux
constantly on hand.*

P.S.—Repairs promptly attended to on reasonable terms.

—FABRIQUE—
—DE—
PORTES ET CHASSIS

—
OUVRAGES EN BOIS DE TOUTES SORTES.
—

J. B. MANTHA & CIE.,
Nos. 10, 12, 14 et 16, Rue St. Charles Borromee,
MONTREAL.

CRYSTAL PALACE OPERA HOUSE,

Dominion Square, opposite Windsor Hotel,

MONTREAL.

ROLAND G. J. BARNETT, - - - *Lessee and Manager.*

MONTREAL'S NEW SUMMER AMUSEMENT RESORT.

THE HOME OF COMIC OPERA.

An entire Season of French and English Operas

New and Elegant Scenery. Magnificent Costumes especially manufactured for this establishment.

Every Evening at 8.15. Matinees:—Wednesday and Saturday at 2.15 p.m. Popular Prices.



Tailor to His Excellency the Gov. General.

*Under the distinguished Patronage of H.R.H. Princess LOUISE
for Ladies' Jackets.*

D. MORGAN,

Place d'Armes,

Opposite Dufferin Terrace, - **QUEBEC.**

AU CHIEN D'OR

Dining-Room

(Opposite the Post Office,)

BUADE STREET, - UPPER TOWN,

QUEBEC.

MEALS at ALL HOURS.

N. LAFORCE, Proprietor.

DELAWARE & HUDSON C. CO'S, RAILROAD: "SARATOGA LINE."

28 MILES THE SHORTEST ROUTE

—BETWEEN—

MONTREAL and NEW YORK.

The only line to
SARATOGA, LAKE GEORGE AND LAKE CHAMPLAIN.

The most direct route to
TROY, ALBANY, NEW YORK, PHILADELPHIA AND ALL
POINTS SOUTH AND EAST.

Passengers by this Route, during the Summer Season, may exchange
their tickets reading through

LAKE CHAMPLAIN and LAKE GEORGE,

Via the Champlain Transportation Company's Steamers,
affording them an opportunity of viewing some of the
FINEST SCENERY IN AMERICA.

**Wagner's Elegant Drawing-Room and Sleeping Cars
run via this Line.**

The Through Mail and Express for New York carried over this Line.

During season of Navigation close connections made at Troy and
Albany with day and night boats on the Hudson River for New York.

Information given and Tickets sold at all the Grand Trunk Ticket
Offices and at the Company's Office,

**143 ST. JAMES STREET,
MONTREAL.**

D. M. KENDRICK,
Gen. Pass. Agent,
ALBANY.

CHARLES C. McFALL,
Gen'l. Agent,
MONTREAL.

C

the fr
of M
villag
all th
of a c
for c
and c
eller
noted
const
parin
appo

H
but a
place
rooms
has n
chara
partic
C
here'
A
thoro
vicin
T
atten
accor

BO
SU

train

CUMBERLAND HOUSE

PLATSBURG, N. Y.

The proprietor respectfully presents the claims of this hotel as being the finest of any in the city. This house is centrally located on the corner of Margaret and Court Streets adjoining the business portion of the village, near the Court House and other country buildings, and possesses all the advantages of nearness to business interests, without the objection of a crowded location; and while not too remote from the railroad depots for convenience, its location has not the unpleasant features of noise, smoke, and confusion from the passing of trains to and from which the weary traveller always desires to escape. Its site has been for nearly a century a noted hotel stand, though the present building is of comparatively recent construction. It has been lately newly furnished and equipped in all departments, and now ranks as one of the most convenient and thoroughly appointed hotels in Northern New York.


Every effort will be made to give visitors not only a good "Hotel," but a place where they may experience all the comforts of a home. As a place for *rest* and *quiet* this house, with its clean large, well ventilated rooms, splendid beds, excellent table, complete and orderly appointments, has no superior. It has an extended reputation for its *true homelike* characteristics and peculiar attractive features for families or travelling parties.

Guests may be assured that no pains will be spared to make a sojourn here pleasant and agreeable in all respects.

A first-class livery is connected with the house, and teams and drivers thoroughly acquainted with all points of interest to the tourist in the vicinity, promptly furnished.

The proprietor of this house, while he makes no change in the fare or attendance, respectfully calls attention to the reduced prices, which are in accordance with the general reductions in all other business.

BOARD per DAY, - - - - \$3.00
SUPPER, LODGING and BREAKFAST, 2.25

 A Free Omnibus to and from all arrivals and departures of trains and boats.

C. S. AVERHILL,
Proprietor.

ESTABLISHED 1859.

S. A. DE LORIMIER,

Successor to KEMP & Co.

Gentlemen's Furnishings.

WHITE DRESS SHIRTS

In all sizes, qualities and styles. Also,

COLLARS IN GREAT VARIETY.

A FINE STOCK OF

CARTWRIGHT & WARNER'S MERINO,

—AND—

SILK UNDERCLOTHING

Also, the latest novelties in

Scarfs, Cravats, Hosiery & Gloves

Are constantly received from the best

LONDON AND PARIS MANUFACTURERS.

1700 NOTRE DAME STREET,

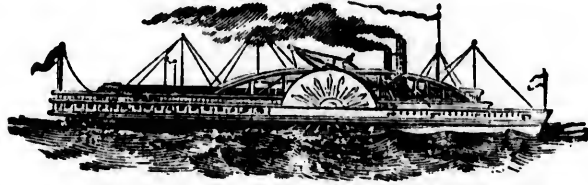
(Second door East of French Church,)

MONTREAL.

N.B.—SHIRTS AND COLLARS MADE TO ORDER.

T
CHA
ROU
P
India
Fren
Rapid
ing
torit
Mont
arriva
From
Ottaw
To sh
C
at Ott
R. V

The Ottawa River Navigation Co.



→* TOURIST ROUTE. *←

CHARMING SCENERY. — WELL APPOINTED STEAMERS.

ROUND-TRIP TICKETS to OTTAWA, up by Rail and return by Boat, \$4.50

Do do do up by Boat and return by Boat, 4.00

Do do do up by Boat and return by Rail, 4.50

**THIS IS THE ONLY RIVER ROUTE BETWEEN
OTTAWA AND MONTREAL.**

Passing beautiful river scenery, Lake of Two Mountains, the Indian Village of Oka, Mount Calvary, with its **Seven famous old French Chapels and Shrines**, Trappiste Monasteries, St. Ann's Rapids (famous as the scene of Moore's Canadian boat song), **shooting the Lachine Rapids**, and passing under the **Great Victoria Bridge** at Montreal. From Ottawa, steamer leaves daily for Montreal at 7 A.M. To Ottawa, steamer leaves Lachine, daily, on arrival of train leaving Montreal at 7 A.M. **Side Excursions.**— From Montreal, a **DAY TRIP TO CARILLON**, Fifty Miles up the Ottawa River, returning in the evening *via Lachine Rapids*. To shoot the Rapids, take 5 P.M. train for Lachine every afternoon.

CANADIAN PACIFIC RAILWAY connects with steamers at Ottawa for Montreal.

R. W. SHEPHERD, JR.,

Manager.

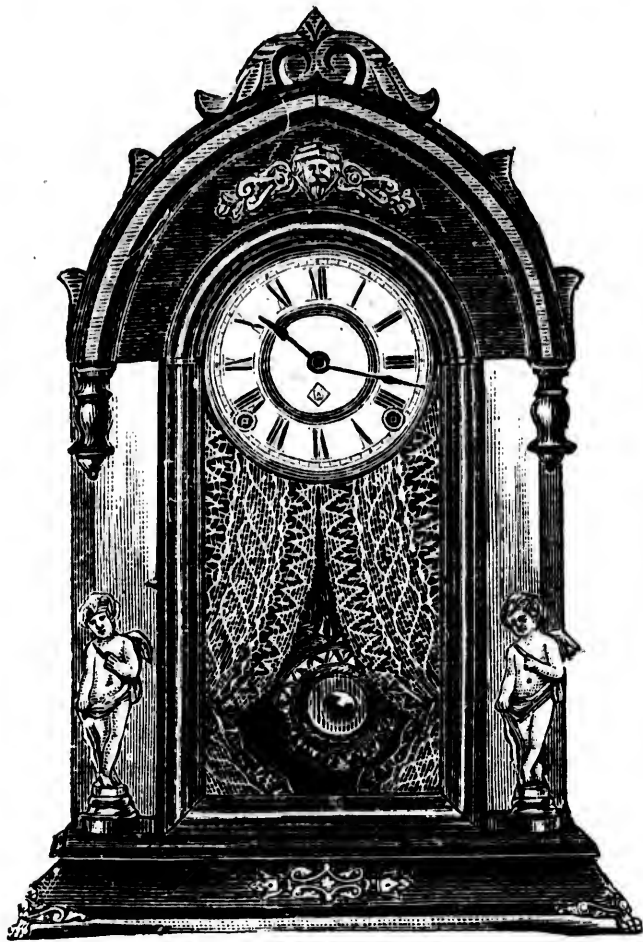
R. W. SHEPHERD,

President.

HEAD OFFICE,—89 Common Street,—MONTREAL.

NARCISSE BEAUDRY,

MANUFACTURING JEWELLER,



WATCHMAKER & OPTICIAN,

1580 Notre Dame Street, MONTREAL.

Has always on hand a very extensive Stock of ENGLISH, FRENCH, and AMERICAN JEWELLERY, also JEWELLERY of his own manufacture, Gold and Silver Watches of the most celebrated Swiss and American makes, Precious Stones, Gold, Silver and Steel Spectacles and Eye-Glasses, to suit all sights. Great assortment of Plated Ware; also, a large variety of Clocks.

Repairing of all kinds promptly and carefully attended to.

SA
SA
SA
LE
GO
SE
AL
LU
L. F
HY
LAI
DEP

DEP

35

Y,

WATCHMAKER & OPTICIAN.

EAL.

RENCH,
ecture,
merican
d Eye-
; also,

LEOPOLD GALARNEAU,

Agent in Canada for

SANDEMAN, BUCK & CO. (PEMARTIN).	SHERRIES.
SANDEMAN & CO.,	PORTS.
SANDEMAN & CO.,	CHAMPAGNES.
LEACOCK & CO ,	MADEIRA WINES.
GORDON & CO.,	GINS AND ORANGE BITTERS.
SEURIN FRERES,	CLARETS.
ALEN'R SEIGNETTE,	BRANDIES.
LUCARDIE & MAINGAY,	GINS.
L. RAMBAUD & MARLIAGUES,	GLACES & CRYSTALLIZ'D FRUITS.	
HY. WHITE & CO.,	RED HEART RUM.
LAIDLAW & SANDEMAN,	SCOTCH WHISKY.
DEPOSSEL FILS.	OLIVE OIL.

DEPOT FOR THE

DUBLECK & CO. CHAMPAGNES.

DELMONICO.

GRAND VIN SEC.

EXTRA DRY 1880.

VIN BRUT 1880.

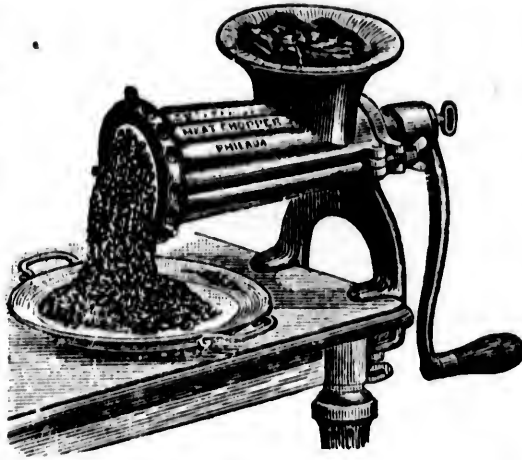
350 ST. PAUL STREET,

MONTREAL.

SIGN

OF THE

GOLDEN PADLOCK.



HARDWARE

IN

NOVELTIES

NEW MEAT CHOPPER,

CUTS MEAT, VEGETABLES, &c.

IS EASILY CLEANED, BEING ALL GALVANIZED.

NEW COMBINATION FRUIT PRESS

—AND—

SAUSAGE STUFFER.

PATENT CURTAIN STRETCHERS,

CARPET SWEEPERS.

Geer's Patent Double and Single SPRING BUTTS,

For Churches, Banks, Hotels, &c., they swing easily and keep the door firm when closed.

THE LARGEST STOCK OF

CUTLERY, PLATED SPOONS AND FORKS, &c.

AT

L. J. A. SURVEYER'S

HARDWARE STORE,

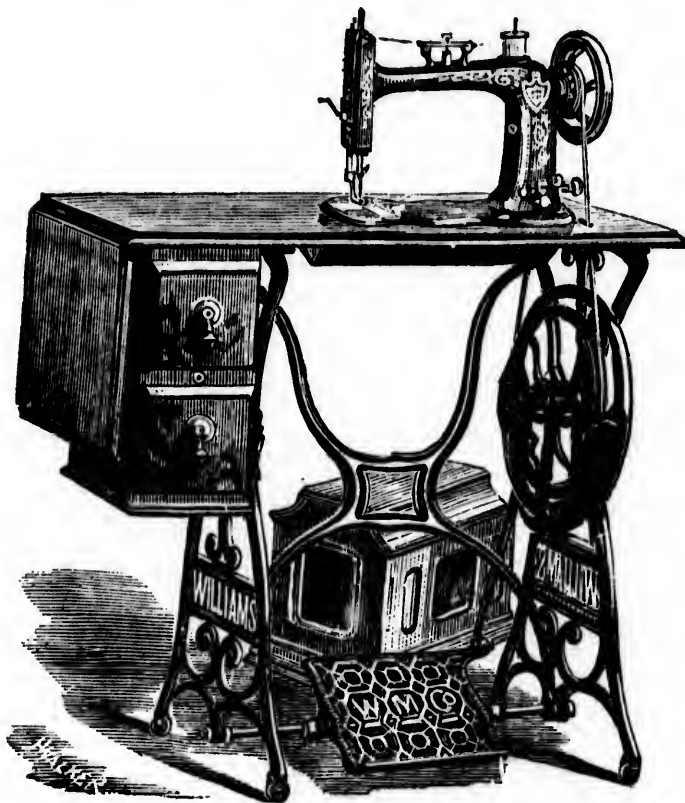
1588 NOTRE DAME STREET, (*facing Court House.*)

MONTREAL.

H
"SWILLIAMS"
NEW WILLIAMS
"V
N

**La Machine à Coudre
la plus parfaite sur
le marché.**

LA "NEW WILLIAMS"



LA "NEW WILLIAMS."

C. MARTEL,
No. 543 Rue Ste.-Catherine,
MONTREAL.

NOVELTIES
R,
SS
ERS.
S,
p the
&C.
se.)

European Bazaar,

34 Fabrique St., - - QUEBEC.

G. SIEFERT,

Importer and Manufacturer of

Genuine Gold Jewellery,

DIAMONDS, WATCHES, CLOCKS,

Sterling Silver and Electro-Plated Goods.

N. B. — Watches, Clocks and Jewellery Carefully Repaired.

ESTABLISHED 1850.

Z. PAQUET,

Importer of Dry Goods,

165 & 167 ST. JOSEPH STREET,

ST. ROCH, QUEBEC.

Furs of all kinds and descriptions.

Always on hand a large and varied assortment of DRY GOODS, CLOTHING, CARPETS AND OIL CLOTH, ROOM PAPER, BOOTS AND SHOES, HOUSE FURNISHINGS, IRON BEDSTEADS AND MATTRESSES. ALSO, First-class TAILORS and MILLINERS employed at this establishment.

J
num
visi
pres
ooo,
Edi
a to
Th
Buil
the
latio
Bloc
inve
over
whic
build
ing
obtai
dolla
Prin
Th
sight
annu
electr
electr
Th
place
They
Chau
lengt
point
very
Th
times
noted
impa
Ri
Gene
reach
Th
Mont
Ott
ely,
work

THE WINDSOR HOUSE.

THE CITY OF OTTAWA, Capital of the Dominion, is one of the most picturesque and attractive of any in Canada. Its Public Buildings are particularly fine, while elegant private residences are numerous; but it is the enchanting scenery of the locality which charms visitors. Ottawa has celebrated the fiftieth year of its existence, and has a present population of over 30,000. Hull City alone has a population of 10,000, and the suburbs of the Capital—Rochesterville, Stewarton and New Edinburgh—about 3,000 more so that the combined local municipalities have a total population of some 30,000.

The great attraction that Ottawa offers to the visitor is the Parliamentary Buildings which includes the Main Block, the Departmental Blocks and the Dominion Library. The Senate and Commons Chambers, where legislation is effected, are located in the main building, while in the Eastern Block is the Patent Office, where there are some eleven thousand models of inventions patented, a museum of wonders in itself. The Library contains over 90,000 volumes. Its fittings are most elegant. Upon Parliament Hill, which is extremely beautiful during the summer season, the Supreme Court building is also located. From the hill a magnificent view of the surrounding country, which is unexcelled for beauty and picturesqueness, can be obtained. The cost of the Government Buildings was some five million dollars. The corner stone of the main building was laid by H. R. H. the Prince of Wales, in 1860, with masonic honors.

The large saw-mills of the Chaudiere are a source of much interest to the sight-seer. Nearly five hundred million feet of lumber are produced annually by the mills of this locality. Several of them are now lighted by electricity, and it is quite novel to see the men at work at night under the electric light.

The Chaudiere Falls, sometimes called the "Big Kettle," have been placed second only to Niagara Falls in point of grandeur and beauty. They can be seen nicely from the Union Suspension Bridge, while the Chaudiere Inter-Provincial Railway Bridge, three-quarters of a mile in length, being the second longest in Canada, can be taken in from the same point. The Rideau Falls, between the City and New Edinburgh, are also very pretty. Rideau means "curtain."

There are many beautiful and costly churches in Ottawa, which is sometimes called the "City of Churches." Its educational institutions are also noted for the excellence of their construction and the superior instruction imparted to the youth.

Rideau Hall, the residence of the Marquis of Lansdowne, Governor General of Canada, is located in the suburb of New Edinburgh, and easily reached. It is charmingly situated.

The National Geological Museum has recently been removed from Montreal. The collection of the ores and minerals of Canada is very fine.

Ottawa is noted for its elevated and beautiful situation, making it extremely healthy, the air being pure and invigorating. Its system of water works is very perfect.

S. DANIELS,

Proprietor.

RUSSELL'S



ST. LOUIS HOTEL,
ST. LOUIS STREET,
QUEBEC.

The Russell Hotel Company,
WILLIS RUSSELL, President.

This Hotel, which is unrivalled for size, style, and locality in Quebec, is open throughout the year for pleasure and business travel, having accommodation for 500 Guests.

L,

ry,

lity in
travel,

