

MOOSOMIN



BOUNTIFUL

BEAUTIFUL

PROGRESSIVE

MOOSOMIN



Mount Library

701000665389



Petunias, Moosomin.



Street Scene, Moosomin.

96050
23-5-49



FOR many years the Town of Moosomin has justly held the enviable distinction of being one of the most important centres of Eastern Saskatchewan. Situated on the main line of the Canadian Pacific Railway, near the western boundary of Manitoba, it has been not only the Gateway of the Province, but also an important distributing centre of a great and well settled agricultural district, which, in the fertility of its soil, in the wealth of its natural resources, and in its abounding prosperity, has few rivals in the West.

Hitherto, with but one line of railway to serve its needs, Moosomin has prospered. At the present time it has five elevators, and the amount of freight handled is greater than that of any other town within ninety miles.

But Moosomin now stands on the threshold of great developments. It has before it the prospect in the near future of becoming a railway centre, and thus sharing to the full in the progress of the West, where railways rapidly make cities.

It is the policy of the Provincial Government to create a few important railway centres throughout the Province, of which Moosomin, by reason of its geographical position and commercial importance, is to be one. It is confidently anticipated that the Grand Trunk Pacific and the Canadian Northern will pass through this town. Already surveyors are working on the Grand Trunk Pacific line from Treat, on the main line, to Weyburn, through



Moosomin, which, when the line is constructed, will open up thousands of additional acres of the best land in the whole West.

The C.N.R. has already obtained a charter for a line from the Hudson's Bay Junction through Moosomin to the southern boundary of the Province, thus placing Moosomin, by the construction of this road, on its direct line between the International boundary and the Hudson's Bay, and within about ninety miles by rail of the Souris coalfields to the south.

Think what this railway development will mean to Moosomin when these three great highways of commerce meet here.



A Prominent Corner.



The Grand Trunk Pacific and the Canadian Northern Railway will cross no less than seven lines of railway and will parallel none. A large portion of grain shipped over these several roads will naturally pass through this town en route to Hudson's Bay. Millions of bushels will thus be handled at this point, and will probably necessitate the erection of large internal storage elevators employing scores of workmen. Transfer lines will also need to be constructed, all of which should certainly result in the town becoming a Divisional Point on both lines of railway.

With the building of these new lines, Moosomin will control a contributory territory larger and more populous than that of any other town east of Saskatoon.

As a distributing point, Moosomin will rank high among Saskatchewan towns, and having secured direct access by railway to an abundant supply of cheap fuel, has every opportunity to become a flourishing industrial centre.

Already along the promised lines the rich country is being opened up. Scores of gasoline ploughing outfits have been at work this fall, and thousands of acres of the richest soil will next year bear their virgin harvests.

Almost every Western centre of importance—Winnipeg, Edmonton, Saskatoon, Moose Jaw, Regina—makes the statement in its publicity matter that it will have direct communication via Le Pas with Hudson's Bay. This, with its new railway facilities, Moosomin will have, and through a mixed farming community unsurpassed in the Granary of the World.

With the coming of these great arteries of transportation in the immediate future, we may look for rapid developments in Moosomin.



Methodist Church, Moosomin.





A Moosomin Residence and Gardens.

DISTRICT

As already said, the district around Moosomin is unexcelled in the West. On every hand are to be seen the evidences of its prosperity. Its soil is rich, its situation is delightful, and every facility is afforded for mixed farming. Nowhere on the broad prairies are better opportunities offered to the settler or investor than in this fertile and prosperous region.

In this connection may be mentioned the Government Creamery which is established in the town, and which now manufactures some 120,000 pounds of butter annually.

At present it gets its supply of raw material

from the local district only and the towns along the main line of the C.P.R. As soon as the new lines are constructed, thousands of pounds of cream that now go elsewhere will be sent here, and new sources of supply will be created.

Here also may be mentioned the Agricultural Society, which holds an annual exhibition in the town and draws entries and visitors from a very large territory, and which will grow in importance as time goes on.



City Hall, Moosomin.



Among the other resources of the district is an immense brick clay deposit about four miles south of the town, which has so far been only partially worked owing to difficulties in transportation. This has lately been purchased by a strong company, and will be developed into what is believed will be one of the best brick-yards in the West. The brick formerly turned out was a splendid sample, and proper development is all that is required to make the brick-yard one of Moosomin's most prosperous industries. The supply of finest clay appears to be unlimited, and for years to come Moosomin will be able to supply Saskatchewan towns and cities with brick and tile of the first quality.



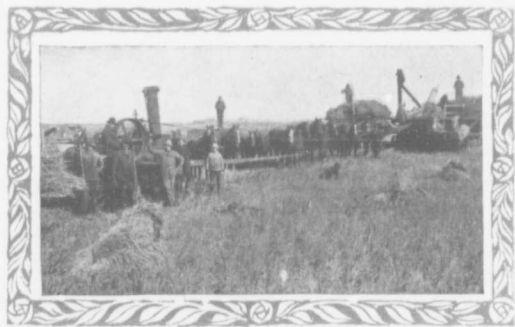
The Hospital, Moosomin.

In these and in other ways this district supplies everything necessary for progress. It is one of the very finest farming districts in the whole land, possessing every requirement for profitable farming—fertile soil (a rich black loam with a clay subsoil), good grazing land, a plentiful supply of good water, sufficient rainfalls, and general freedom from early frosts. In thirty years there has not been a crop failure in the Moosomin district.

In 1911 the wheat, oats and barley shipped from Moosomin totalled 600,000 bushels.

Products from this district have won principal prizes at Provincial fairs, and at the International Dry Farming Congress at Lethbridge.

Mixed farming is entered into extensively. In 1911 alone, stock to the value of \$200,000 was shipped from the town of Moosomin. As a horse-breeding district Moosomin is famous. Some of the finest horses in the Province are from this district. It is also one of the two points in the Province in which the Government conducts an annual sale of pure-bred stock.



Threshing Near Moosomin.





St. Alban's Church, Moosomin.



==== TOWN =====

Moosomin sprang into being with the building of the C.P.R. in 1882. Through it passed the old and well-worn trail of the Hudson's Bay Company from Fort Ellice on the north to Moose Mountain on the south, which was for many years one of the most important of those primitive highways of commerce. At once Moosomin became a trade centre, and to-day it holds a foremost place as one of the most flourishing and progressive towns in Saskatchewan.



As a judicial centre it is important. The Judicial District of Moosomin extends over a large area, and includes one of the wealthiest and



Panoramic View of Moosomin.





A Moosomin Residence.

point, being the headquarters of "A" Squadron, 16th Light Horse, and a Drill Hall and Armory are now under course of construction, at a cost of \$10,400.

On May 1st, 1912, the town was created a Port of Entry of the Customs Department, and the business is rapidly assuming large proportions.

It is the centre of a Rural Mail delivery service, and is also an important centre of the Government Telephone system. Outside the cities, there is no larger exchange in the Province. Moosomin has the greatest number of radiating lines, and more rural lines than any other exchange in Saskatchewan.

most thickly populated portions of the Province. Moosomin has a Court House, a Resident Judge, a Sheriff and a local Registrar of the Supreme Court, who is also Clerk of the District and Surrogate Courts.

The volume of legal business centralized at this point has resulted in the establishment of large legal offices in the town.

Moosomin is the centre of a Land Titles District, and a Land Titles Office is now in course of erection at a cost of \$50,000.

A Barracks of the R.N.W.M.P. is located here, at which is stationed a strong detachment of the famous police.

Moosomin is also an important military



The Provincial Gaol, which was recently erected at a cost of over \$100,000, employs a large staff.

A well-equipped Hospital, with capacity for twenty patients, ensures the best of modern treatment for medical and surgical cases. It is Government aided and Government supervised.

The Town Hall—one of the largest buildings—is centrally situated, and comprises an Opera Hall, with a seating capacity of over 600, the Post Office, Fire Hall, and Council Chambers. It was built at a cost of \$40,000.

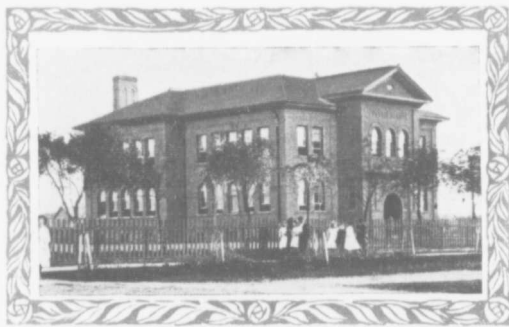


The Pipestone, near Moosomin.



A Water-Works system, based upon an inexhaustible artesian supply located in the centre of the town, furnishes the very best of water for domestic purposes, and provides adequate fire protection. In addition to stand pipes and hydrants throughout the business section of the town, the fire protection system comprises a chemical engine, high pressure engine, hose, reels, and other necessary equipment. The fire and drainage system represent an outlay of \$40,000.

The town is lighted by an Acetylene Gas Plant, which furnishes an excellent light to public and private buildings, and supplies gas for a high-class street-lighting service.



Public School, Moosomin.

of Saskatchewan, Assiniboia and Alberta. The first building was outgrown, and the new building was thought at that time to be too large. But the growth continued, and in 1898 an eight-roomed brick Public School—one of the finest in the new Province—was erected. It has now a teaching staff of six and a roll of 275 pupils.

In 1907 the High School was separately organized, being the second High School in the Province. In 1908 the High School pupils had so considerably increased in number that the present splendid Institute Building with modern equipment was erected at a cost of over \$25,000. The staff

The Municipal organization is another striking example of a whole hearted endeavor towards the making of an ideal town.

The prevalent good health is in a large measure due to the carefully planned drainage system with which the town is served. All surface water is drained off and every business place in the town is possessed of a thoroughly dry cellar. An efficient Board of Health ensures compliance with necessary sanitary regulations.

Educationally, Moosomin is among the first, both in history, accomplishment and equipment. In 1885, Moosomin organized the twelfth school in the three Territories



consists of four teachers, specialists in their respective departments, and the course of studies pursued leads up to the various Teachers' Certificates, Senior Matriculation for the Universities, and a special course in Agriculture.

The Normal School had this year 56 students in attendance.

There is also the North-Western School of Music, which is now being established. Moosomin has always held itself prepared to deal with the ever-advancing needs of education, and her record for results is one of the finest in Western Canada.

The importance of the town and district has necessitated the locating in Moosomin of large Banking,

Commercial, Industrial and Professional institutions.

The large Departmental Stores are second to none in the Province, and are expanding from year to year to meet the increased volume of business.

All the Fraternal Societies are strongly represented.

Amid all these material and social advantages, the spiritual welfare of the people is provided for by Churches of five different denominations—the Church of England, Presbyterian, Methodist, Baptist and the Roman Catholic Churches. All are well represented and possess comfortable buildings.



A Comfortable Home, Moosomin.



St. Andrew's Church, Moosomin.



SPORT



Moosomin enjoys a well-earned reputation in matters of sport and recreation. Its Turf Club possesses fine grounds with a good track, and provides some splendid programmes.

The town supports a strong Association Football Club, a famous Baseball organization, and Cricket has long flourished here.

A large Skating Rink is conducted by a Joint Stock Company, and Hockey and Skating are enthusiastically enjoyed. Moosomin is recognized as being one of the best Hockey towns in the West, and every season finds further honors added to the long list captured by the club of this town.

The Curling Club is a properly organized limited company owning its own rink. Each year a Bonspiel is held, at which many rinks compete for valuable trophies.

Moosomin supports the best Tennis Club and Bowling Green in the Province.

In connection with recreation, mention may be made of a scheme to create a pleasure resort at Pipestone, some five miles south of the town. Like the Qu'Appelle Valley, the Valley of the Pipestone charms the eye with the beauty and even grandeur of its scenery. Wide and deep, with its



Among Moosomin Gardens.



southern side clothed with wood, and with its silver stream winding through its midst, it forms a striking contrast to the comparative monotony of the prairie in which it rests. Here, beauty and utility may be combined. Engineers are looking over the site estimating the amount of water power capable of being developed, and formulating plans for the creation of a popular summer resort.

ATTRACTIONS

As a place of residence, Moosomin has many attractions. It is conspicuous for its natural beauty. Its avenues and groves of trees, its fine, substantial residences, its well-kept lawns and gardens, its general appearance of prosperity and comfort, together with its social, religious, and many other advantages render it a most desirable place in which to live. Its people are kind and hospitable, and in



From the C.P.R., Moosomin

every way as a place of residence, Moosomin affords all that can be reasonably desired.

The cost of living is low compared with many other places in the West. Assessments, tax rates and rents are placed at the fairest possible figures. The necessities of life are furnished at figures impossible to less favored communities.

With such numerous present advantages, and with the prospect in the near future of great railway development, Moosomin will afford a profitable field for investment. Its future is one of promise. Indications point to an extension and develop-

ment of things such as Moosomin has not experienced before. Unsurpassed for location, both from the standpoint of natural beauty and of commercial importance and possibility, Moosomin offers every advantage to the prospective investor and settler. Lying 219 miles west of Winnipeg, and about 150 miles east of Regina, in a direct line between Hudson's Bay Junction and the International boundary, the central point (east and west) of the Western Provinces, it has in it the promise of a splendid future, and should grow with the



Cutting Wheat Near Moosomin.



Collegiate Institute, Moosomin.

Come and see Moosomin and Moosomin District for yourself.

growth of this fairest of all the Provinces of the West.

Not only does the town itself, by reason of its splendid situation and numerous advantages, hold out great promise to enterprise, but the present value of farm lands in this district offers a distinct advantage to settlers and investors. Although the soil is the very best in Canada, and the conditions eminently favorable, land can be purchased here to-day cheaper than similar lands at any other point in the Province. Values, however, are rapidly rising, and in a few years prices may be more than double at the present rate of increase.





Court House, Moosomin.



Elevators at Moosomin.

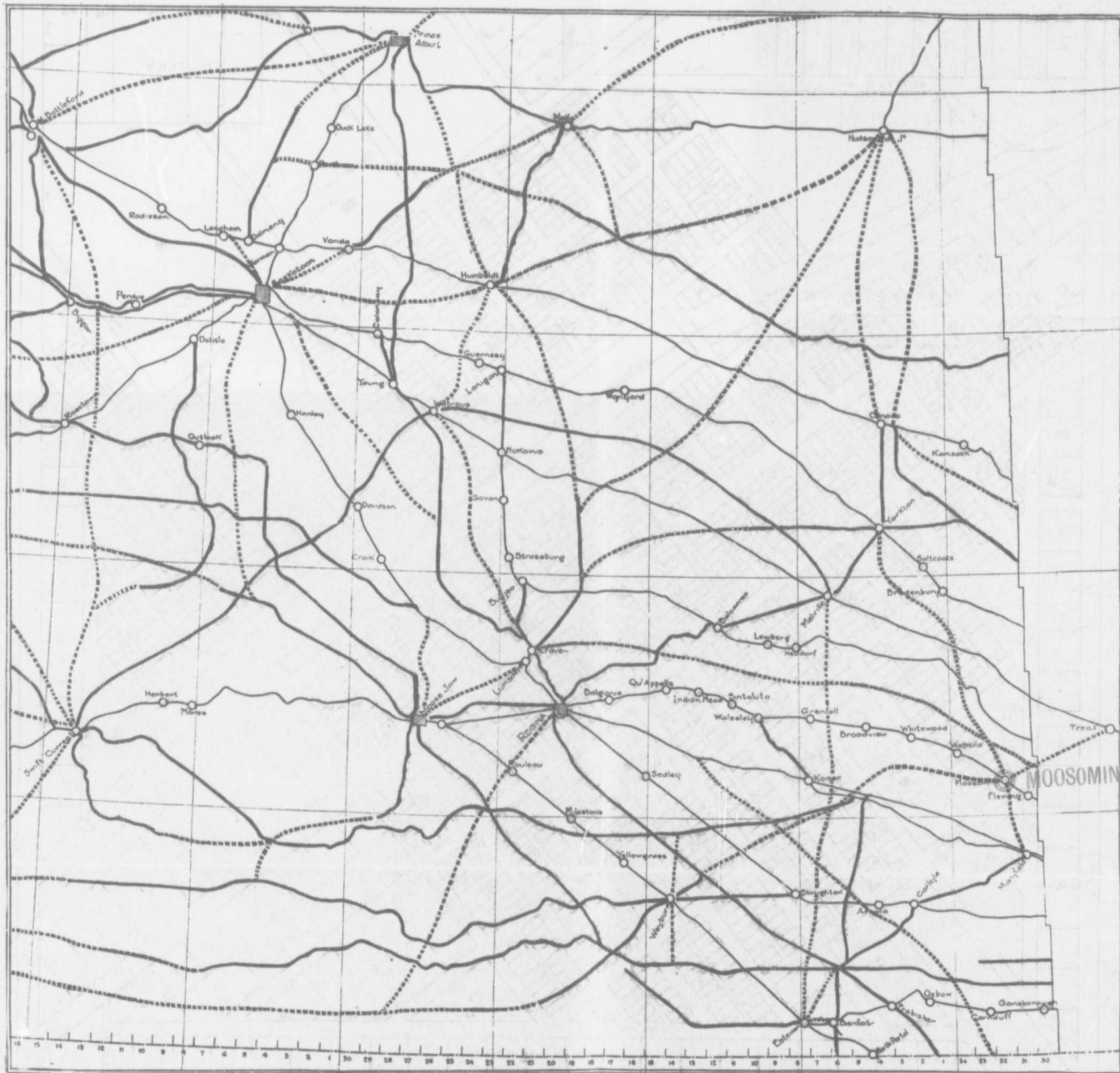
Authorized by the Town Council and
the Board of Trade, Moosomin
October 30, 1912



Moosomin Library

DESIGNED BY





MAP SHOWING PRESENT AND PROSPECTIVE RAILWAYS OF THE PROVINCE OF SASKATCHEWAN.

N.B.—Note the Strategic Importance of Moosomin at the very Threshold of Saskatchewan.



John J. [unclear]



MAP OF THE SUBDIVISION OF THE ORIGINAL TOWNSITE OF MOOSOMIN.