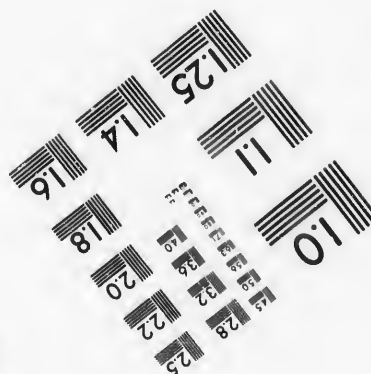
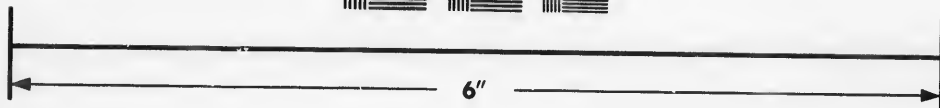
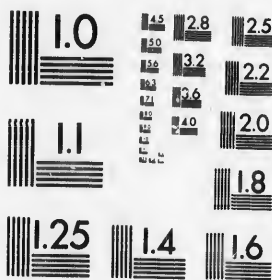


**IMAGE EVALUATION
TEST TARGET (MT-3)**



**Photographic
Sciences
Corporation**

23 WEST MAIN STREET
WEBSTER, N.Y. 14580
(716) 872-4503

**CIHM/ICMH
Microfiche
Series.**

**CIHM/ICMH
Collection de
microfiches.**



Canadian Institute for Historical Microreproductions / Institut canadien de microreproductions historiques

© 1986

Technical and Bibliographic Notes/Notes techniques et bibliographiques

The Institute has attempted to obtain the best original copy available for filming. Features of this copy which may be bibliographically unique, which may alter any of the images in the reproduction, or which may significantly change the usual method of filming, are checked below.

L'Institut a microfilmé le meilleur exemplaire qu'il lui a été possible de se procurer. Les détails de cet exemplaire qui sont peut-être uniques du point de vue bibliographique, qui peuvent modifier une image reproduite, ou qui peuvent exiger une modification dans la méthode normale de filmage sont indiqués ci-dessous.

- | | |
|--|--|
| <input type="checkbox"/> Coloured covers/
Couverture de couleur | <input type="checkbox"/> Coloured pages/
Pages de couleur |
| <input type="checkbox"/> Covers damaged/
Couverture endommagée | <input checked="" type="checkbox"/> Pages damaged/
Pages endommagées |
| <input type="checkbox"/> Covers restored and/or laminated/
Couverture restaurée et/ou pelliculée | <input type="checkbox"/> Pages restored and/or laminated/
Pages restaurées et/ou pelliculées |
| <input type="checkbox"/> Cover title missing/
Le titre de couverture manque | <input checked="" type="checkbox"/> Pages discoloured, stained or foxed/
Pages décolorées, tachetées ou piquées |
| <input type="checkbox"/> Coloured maps/
Cartes géographiques en couleur | <input type="checkbox"/> Pages detached/
Pages détachées |
| <input type="checkbox"/> Coloured ink (i.e. other than blue or black)/
Encre de couleur (i.e. autre que bleue ou noire) | <input checked="" type="checkbox"/> Showthrough/
Transparence |
| <input type="checkbox"/> Coloured plates and/or illustrations/
Planches et/ou illustrations en couleur | <input type="checkbox"/> Quality of print varies/
Qualité inégale de l'impression |
| <input type="checkbox"/> Bound with other material/
Relié avec d'autres documents | <input type="checkbox"/> Includes supplementary material/
Comprend du matériel supplémentaire |
| <input type="checkbox"/> Tight binding may cause shadows or distortion
along interior margin/
La reliure serrée peut causer de l'ombre ou de la
distorsion le long de la marge intérieure | <input type="checkbox"/> Only edition available/
Seule édition disponible |
| <input type="checkbox"/> Blank leaves added during restoration may
appear within the text. Whenever possible, these
have been omitted from filming/
Il se peut que certaines pages blanches ajoutées
lors d'une restauration apparaissent dans le texte,
mais, lorsque cela était possible, ces pages n'ont
pas été filmées. | <input type="checkbox"/> Pages wholly or partially obscured by errata
slips, tissues, etc., have been refilmed to
ensure the best possible image/
Les pages totalement ou partiellement
obscurcies par un feuillet d'errata, une pelure,
etc., ont été filmées à nouveau de façon à
obtenir la meilleure image possible. |
- Additional comments: [Printed ephemera] 1 sheet (verso blank)
Commentaires supplémentaires:

This item is filmed at the reduction ratio checked below/
Ce document est filmé au taux de réduction indiqué ci-dessous.

10X	12X	14X	16X	18X	20X	22X	24X	26X	28X	30X	32X
					/						

The copy filmed here has been reproduced thanks to the generosity of:

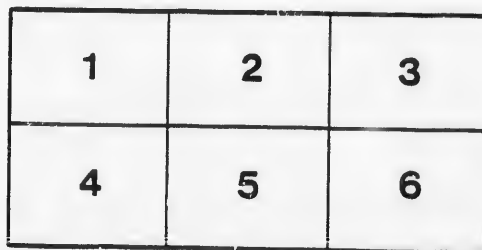
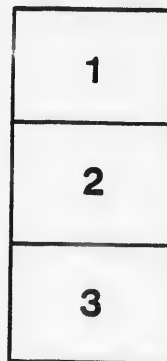
D. B. Weldon Library
University of Western Ontario
(Regional History Room)

The images appearing here are the best quality possible considering the condition and legibility of the original copy and in keeping with the filming contract specifications.

Original copies in printed paper covers are filmed beginning with the front cover and ending on the last page with a printed or illustrated impression, or the back cover when appropriate. All other original copies are filmed beginning on the first page with a printed or illustrated impression, and ending on the last page with a printed or illustrated impression.

The last recorded frame on each microfiche shall contain the symbol \rightarrow (meaning "CONTINUED"), or the symbol ∇ (meaning "END"), whichever applies.

Maps, plates, charts, etc., may be filmed at different reduction ratios. Those too large to be entirely included in one exposure are filmed beginning in the upper left hand corner, left to right and top to bottom, as many frames as required. The following diagrams illustrate the method:



L'exemplaire filmé fut reproduit grâce à la générosité de:

D. B. Weldon Library
University of Western Ontario
(Regional History Room)

Les images suivantes ont été reproduites avec le plus grand soin, compte tenu de la condition et de la netteté de l'exemplaire filmé, et en conformité avec les conditions du contrat de filmage.

Les exemplaires originaux dont la couverture en papier est imprimée sont filmés en commençant par le premier plat et en terminant soit par la dernière page qui comporte une empreinte d'impression ou d'illustration, soit par le second plat, selon le cas. Tous les autres exemplaires originaux sont filmés en commençant par la première page qui comporte une empreinte d'impression ou d'illustration et en terminant par la dernière page qui comporte une telle empreinte.

Un des symboles suivants apparaîtra sur la dernière image de chaque microfiche, selon le cas: le symbole \rightarrow signifie "A SUIVRE", le symbole ∇ signifie "FIN".

Les cartes, planches, tableaux, etc., peuvent être filmés à des taux de réduction différents. Lorsque le document est trop grand pour être reproduit en un seul cliché, il est filmé à partir de l'angle supérieur gauche, de gauche à droite, et de haut en bas, en prenant le nombre d'images nécessaire. Les diagrammes suivants illustrent la méthode.

CHANCERY

L A N

IN PETERS

IN CHANCERY --- G

Pursuant to the decree in this cause, the Master in Chancery, at London, there will be offered for

PUBLIC AU

to be held in the Office of the said Master, in the Court

WEDNESDAY, 1st

at the hour of 2 o'clock in the

WEDNESDAY, 1st

**EVERY SALE OF
LANDS
AT
PETERSVILLE.**

--- Grace vs. Grace.

This cause, and the finding and direction of
it will be offered for sale at

AT AUCTION,

at 2 o'clock in the afternoon, in the County Buildings, Ridout Street, London, on

1st OF NOV., 1876

at 2 o'clock in the afternoon,

WEDNESDAY, 15th

at the hour of 2 o'clock in

WEDNESDAY, 15th

at the hour of 2 o'clock

The Following Land

NAME

PARCEL 1.—Lot number 3 on the north side of Mill
McClary, surveyor, for Jeremiah Hill; which said
numbers 4 and 5, on the east side of the Wharncly
the River Thames, in the 2nd Concession of the T
ment 3 roods and 16 perches.

PARCEL 2.—Lot number 2, on the north side of Oxford
William McClary, surveyor, for Jeremiah Hill, con
38 perches, save and except those certain portions
John Grace in his lifetime to one James Wilkin
about half an acre.

PARCEL 1.—Comprises nearly an acre of good land,
property will be sold in one lot.

PARCEL 2.—Comprises valuable building lots, well sit
new frame house upon one of the lots. This prope

Purchasers will be required to
centum of the purchase money at t
of it in one month thereafter, without
Conditions of Sale are the stand
Chancery.

Further particulars may be had by applying to th
tor, No. 74 Dundas Street, or to the undersigned.

MEREDITH & MEREDITH,
78 Dundas St., Vendors' Solicitors.

(Sig

2 o'clock in the afternoon,

of 2 o'clock in the afternoon,

Lands and Premises,

FAMILY :

side of Mill Street, in a block of lots laid out by William which said block of lots is composed of broken park lots the Wharncliffe highway, and west of the North Branch of on of the Township of London, containing by admeasure-

de of Oxford Street, in the said block of lots laid out by ah Hill, containing by admeasurement 2 acres 1 rood and in portions of the said lot number 2 sold and conveyed by James Wilkinson and one Peter Grant, containing, together,

good land, a rough-cast house and a good Orchard. This

lots, well situated, in the Village of Petersville. There is a This property will be sold in quarter-acre lots.

ired to pay down a deposit of 10 per cent at the time of sale, and the balance without interest.

the standing conditions of the Court of

plying to the Vendors' Solicitors, to W.R. Meredith, Solicit-
gned.

(Signed)

J. SHANLY,

Master in Chancery at London.

rs.

