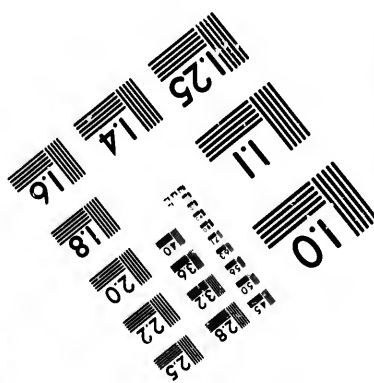
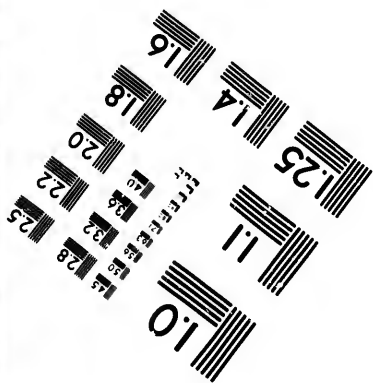
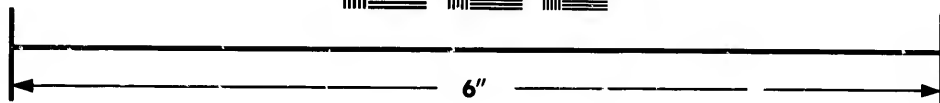
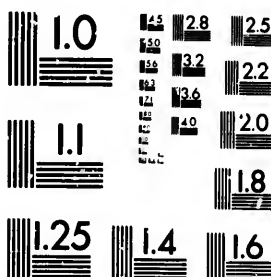


**IMAGE EVALUATION
TEST TARGET (MT-3)**



**Photographic
Sciences
Corporation**

23 WEST MAIN STREET
WEBSTER, N.Y. 14580
(716) 872-4503

15 28 25
16 32 22
18 20

**CIHM/ICMH
Microfiche
Series.**

**CIHM/ICMH
Collection de
microfiches.**



Canadian Institute for Historical Microreproductions / Institut canadien de microreproductions historiques

10

© 1987

Technical and Bibliographic Notes/Notes techniques et bibliographiques

The Institute has attempted to obtain the best original copy available for filming. Features of this copy which may be bibliographically unique, which may alter any of the images in the reproduction, or which may significantly change the usual method of filming, are checked below.

L'Institut a microfilmé le meilleur exemplaire qu'il lui a été possible de se procurer. Les détails de cet exemplaire qui sont peut-être uniques du point de vue bibliographique, qui peuvent modifier une image reproduite, ou qui peuvent exiger une modification dans la méthode normale de filmage sont indiqués ci-dessous.

- | | |
|--|--|
| <input type="checkbox"/> Coloured covers/
Couverture de couleur | <input type="checkbox"/> Coloured pages/
Pages de couleur |
| <input type="checkbox"/> Covers damaged/
Couverture endommagée | <input type="checkbox"/> Pages damaged/
Pages endommagées |
| <input type="checkbox"/> Covers restored and/or laminated/
Couverture restaurée et/ou pelliculée | <input type="checkbox"/> Pages restored and/or laminated/
Pages restaurées et/ou pelliculées |
| <input type="checkbox"/> Cover title missing/
Le titre de couverture manque | <input checked="" type="checkbox"/> Pages discoloured, stained or foxed/
Pages décolorées, tachetées ou piquées |
| <input type="checkbox"/> Coloured maps/
Cartes géographiques en couleur | <input checked="" type="checkbox"/> Pages detached/
Pages détachées |
| <input type="checkbox"/> Coloured ink (i.e. other than blue or black)/
Encre de couleur (i.e. autre que bleue ou noire) | <input type="checkbox"/> Showthrough/
Transparence |
| <input type="checkbox"/> Coloured plates and/or illustrations/
Planches et/ou illustrations en couleur | <input type="checkbox"/> Quality of print varies/
Qualité inégale de l'impression |
| <input type="checkbox"/> Bound with other material/
Relié avec d'autres documents | <input type="checkbox"/> Includes supplementary material/
Comprend du matériel supplémentaire |
| <input type="checkbox"/> Tight binding may cause shadows or distortion
along interior margin/
La reliure serrée peut causer de l'ombre ou de la
distorsion le long de la marge intérieure | <input type="checkbox"/> Only edition available/
Seule édition disponible |
| <input type="checkbox"/> Blank leaves added during restoration may
appear within the text. Whenever possible, these
have been omitted from filming/
Il se peut que certaines pages blanches ajoutées
lors d'une restauration apparaissent dans le texte,
mais, lorsque cela était possible, ces pages n'ont
pas été filmées. | <input type="checkbox"/> Pages wholly or partially obscured by errata
slips, tissues, etc., have been refilmed to
ensure the best possible image/
Les pages totalement ou partiellement
obscurcies par un feuillet d'errata, une pelure,
etc., ont été filmées à nouveau de façon à
obtenir la meilleure image possible. |
| <input checked="" type="checkbox"/> Additional comments:/ [Printed ephemera] 1 sheet (verso blank)
Commentaires supplémentaires: | |

This item is filmed at the reduction ratio checked below/
Ce document est filmé au taux de réduction indiqué ci-dessous.

10X	14X	18X	22X	26X	30X
<input type="checkbox"/>	<input type="checkbox"/>	<input type="checkbox"/>	<input type="checkbox"/>	<input checked="" type="checkbox"/>	<input type="checkbox"/>
12X	16X	20X	24X	28X	32X

The copy filmed here has been reproduced thanks to the generosity of:

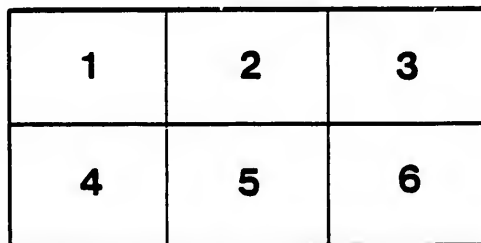
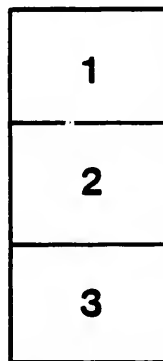
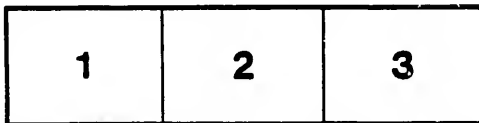
Manuscript Division
Public Archives of Canada

The images appearing here are the best quality possible considering the condition and legibility of the original copy and in keeping with the filming contract specifications.

Original copies in printed paper covers are filmed beginning with the front cover and ending on the last page with a printed or illustrated impression, or the back cover when appropriate. All other original copies are filmed beginning on the first page with a printed or illustrated impression, and ending on the last page with a printed or illustrated impression.

The last recorded frame on each microfiche shall contain the symbol \rightarrow (meaning "CONTINUED"), or the symbol ∇ (meaning "END"), whichever applies.

Maps, plates, charts, etc., may be filmed at different reduction ratios. Those too large to be entirely included in one exposure are filmed beginning in the upper left hand corner, left to right and top to bottom, as many frames as required. The following diagrams illustrate the method:



L'exemplaire filmé fut reproduit grâce à la générosité de:

Division des manuscrits
Archives publiques du Canada

Les images suivantes ont été reproduites avec le plus grand soin, compte tenu de la condition et de la netteté de l'exemplaire filmé, et en conformité avec les conditions du contrat de filmage.

Les exemplaires originaux dont la couverture en papier est imprimée sont filmés en commençant par le premier plat et en terminant soit par la dernière page qui comporte une empreinte d'impression ou d'illustration, soit par le second plat, selon le cas. Tous les autres exemplaires originaux sont filmés en commençant par la première page qui comporte une empreinte d'impression ou d'illustration et en terminant par la dernière page qui comporte une telle empreinte.

Un des symboles suivants apparaîtra sur la dernière image de chaque microfiche, selon le cas: le symbole \rightarrow signifie "A SUIVRE", le symbole ∇ signifie "FIN".

Les cartes, planches, tableaux, etc., peuvent être filmés à des taux de réduction différents. Lorsque le document est trop grand pour être reproduit en un seul cliché, il est filmé à partir de l'angle supérieur gauche, de gauche à droite, et de haut en bas, en prenant le nombre d'images nécessaire. Les diagrammes suivants illustrent la méthode.

errata
to

pelure,
on à



32X



ADJUTANT GENERAL'S OFFICE,

QUEBEC, 7th June, 1815.

GENERAL ORDERS.

N^o 1. WITH reference to the General Order of the 6th December, 1814, communicating the Gracious intentions of His Royal Highness the PRINCE REGENT, of granting to disbanded Soldiers locations of Waste Lands and Crown Reserves in the Canadas; His Excellency Lieut.-General Sir GORDON DRUMMOND, Commanding the Forces, directs that the following Regulations be published for the information and guidance of all such claimants who may be desirous of settling in Lower-Canada.

Each Soldier is to be allowed One Hundred Acres of Land, and is to receive his Location from the Superintendent, upon his being satisfied that the claimant is of the description and of the character to become an useful settler. He is to be placed on his Land; the Boundaries of which, and the conditions of his Grant, are to be expressed in the Ticket of Location. It is to be clearly understood, that the Lands held under these Grants, cannot be alienated or disposed of until the grantee shall have resided upon and cultivated a reasonable proportion of the same, for the space of three years.

Officers will be entitled to a Ticket of Location, in the first instance, for 200 acres of Land, upon condition that they cause a reasonable proportion of the same to be cultivated, and do not dispose of it until three years after the date of the Ticket.

Officers and men are to receive Provisions for themselves and Families, in such proportions as shall be hereafter specified, for one year.

Implements of Husbandry and Tools, will also be supplied to them in sufficient quantities, and other comforts, according to the necessities of the individuals.

With a view to carry into full effect the intentions of His Majesty's Government on this head, His Excellency has been pleased to make the following appointments:

Major FREDERICK GEORGE HERIOT, of the Canadian Voltigeurs, to be Superintendent.

Lieut.-Colonel DE BOUCHERVILLE, (Militia) Deputy Superintendent.

Lieut. STEAN, 49th Foot, Secretary and Storekeeper.

His Excellency has also been pleased to make the following temporary appointments of Officers, to be stationed at the Depot at William Henry, to receive and take charge of the Settlers:

Captain ADHEMAR, Canadian Voltigeurs, at 5/ Army Stg. per day.

Lieut. SMITH, 41st Regt. Lieutenants HEDDEN and PRENDERGAST, Canadian Voltigeurs, at 2/6 Army Stg. per day, in addition to the full pay of their respective Commissions. These appointments to take place from the 25th ultimo.

These Officers will proceed immediately to the Depot at Sorel, and place themselves under the orders of the Superintendent.

All applications on the part of claimants for Lands in Lower-Canada, are to be made, until further notice, to the Officer in charge of the Depot at William Henry.

Passages to the Depot will be ordered on application at the Office of the Adjutant General, for such of these Men (and their families) as may have received their Discharges at Quebec.

J. HARVEY, Dep. Adj. Gen.

