

**CIHM  
Microfiche  
Series  
(Monographs)**

**ICMH  
Collection de  
microfiches  
(monographies)**



**Canadian Institute for Historical Microreproductions / Institut canadien de microreproductions historiques**

**© 1996**

## Technical and Bibliographic Notes / Notes techniques et bibliographiques

The Institute has attempted to obtain the best original copy available for filming. Features of this copy which may be bibliographically unique, which may alter any of the images in the reproduction, or which may significantly change the usual method of filming are checked below.

- Coloured covers / Couverture de couleur
- Covers damaged / Couverture endommagée
- Covers restored and/or laminated / Couverture restaurée et/ou pelliculée
- Cover title missing / Le titre de couverture manque
- Coloured maps / Cartes géographiques en couleur
- Coloured ink (i.e. other than blue or black) / Encre de couleur (i.e. autre que bleue ou noire)
- Coloured plates and/or illustrations / Planches et/ou illustrations en couleur
- Bound with other material / Relié avec d'autres documents
- Only edition available / Seule édition disponible
- Tight binding may cause shadows or distortion along interior margin / La reliure serrée peut causer de l'ombre ou de la distorsion le long de la marge intérieure.
- Blank leaves added during restorations may appear within the text. Whenever possible, these have been omitted from filming / Il se peut que certaines pages blanches ajoutées lors d'une restauration apparaissent dans le texte, mais, lorsque cela était possible, ces pages n'ont pas été filmées.
- Additional comments / Commentaires supplémentaires:

L'Institut a microfilmé le meilleur exemplaire qu'il lui a été possible de se procurer. Les détails de cet exemplaire qui sont peut-être uniques du point de vue bibliographique, qui peuvent modifier une image reproduite, ou qui peuvent exiger une modification dans la méthode normale de filmage sont indiqués ci-dessous.

- Coloured pages / Pages de couleur
- Pages damaged / Pages endommagées
- Pages restored and/or laminated / Pages restaurées et/ou pelliculées
- Pages discoloured, stained or foxed / Pages décolorées, tachetées ou piquées
- Pages detached / Pages détachées
- Showthrough / Transparence
- Quality of print varies / Qualité inégale de l'impression
- Includes supplementary material / Comprend du matériel supplémentaire
- Pages wholly or partially obscured by errata slips, tissues, etc., have been refilmed to ensure the best possible image / Les pages totalement ou partiellement obscurcies par un feuillet d'errata, une pelure, etc., ont été filmées à nouveau de façon à obtenir la meilleure image possible.
- Opposing pages with varying colouration or discolourations are filmed twice to ensure the best possible image / Les pages s'opposant ayant des colorations variables ou des décolorations sont filmées deux fois afin d'obtenir la meilleure image possible.

This item is filmed at the reduction ratio checked below /  
Ce document est filmé au taux de réduction indiqué ci-dessous.

10x		14x		18x		22x		26x		30x
								<input checked="" type="checkbox"/>		
	12x		16x		20x		24x		28x	32x

The copy filmed here has been reproduced thanks to the generosity of:

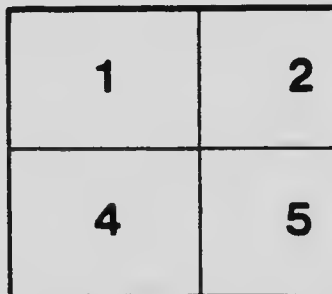
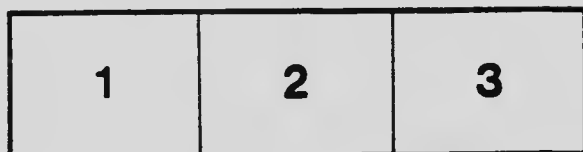
University of Western Ontario,  
Sciences Library.

The images appearing here are the best quality possible considering the condition and legibility of the original copy and in keeping with the filming contract specifications.

Original copies in printed paper covers are filmed beginning with the front cover and ending on the last page with a printed or illustrated impression, or the back cover when appropriate. All other original copies are filmed beginning on the first page with a printed or illustrated impression, and ending on the last page with a printed or illustrated impression.

The last recorded frame on each microfiche shall contain the symbol  $\rightarrow$  (meaning "CONTINUED"), or the symbol  $\nabla$  (meaning "END"), whichever applies.

Maps, plates, charts, etc., may be filmed at different reduction ratios. Those too large to be entirely included in one exposure are filmed beginning in the upper left hand corner, left to right and top to bottom, as many frames as required. The following diagrams illustrate the method:



L'exemplaire filmé fut reproduit grâce à la générosité de:

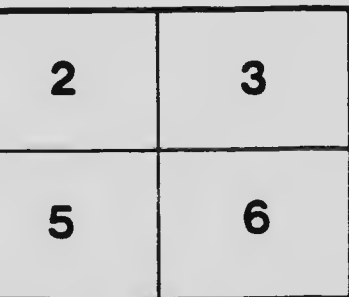
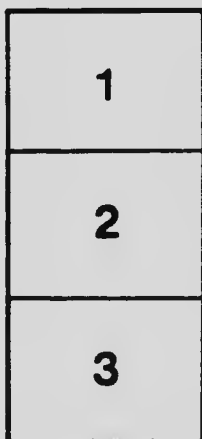
University of Western Ontario,  
Sciences Library.

Les images suivantes ont été reproduites avec le plus grand soin, compte tenu de la condition et de la netteté de l'exemplaire filmé, et en conformité avec les conditions du contrat de filmage.

Les exemplaires originaux dont la couverture en papier est imprimée sont filmés en commençant par la première page et en terminant soit par la dernière page qui comporte une empreinte d'impression ou d'illustration, soit par la seconde page, selon le cas. Tous les autres exemplaires originaux sont filmés en commençant par la première page qui comporte une empreinte d'impression ou d'illustration et en terminant par la dernière page qui comporte une telle empreinte.

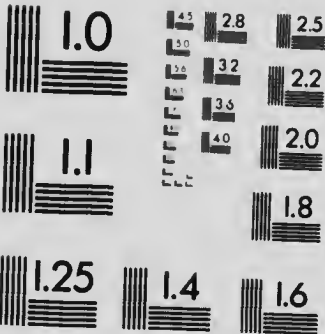
Un des symboles suivants apparaîtra sur la dernière image de chaque microfiche, selon le cas: le symbole  $\rightarrow$  signifie "A SUIVRE", le symbole  $\nabla$  signifie "FIN".

Les cartes, planches, tableaux, etc., peuvent être filmés à des taux de réduction différents. Lorsque le document est trop grand pour être reproduit sur un seul cliché, il est filmé à partir de l'angle supérieur gauche, de gauche à droite, et de haut en bas, en prenant le nombre d'images nécessaire. Les diagrammes suivants illustrent la méthode.



# MICROCOPY RESOLUTION TEST CHART

ANSI and ISO TEST CHART No. 2)



**APPLIED IMAGE Inc**

1653 East Main Street  
Rochester, New York 14609 USA  
(716) 482-0300 - Phone  
(716) 288-5989 - Fax

*JK*

*Woon*

**RULES**  
OF THE  
**INSTITUTE OF PUBLIC HEALTH  
AND PREVENTIVE MEDICINE**

**LONDON, CANADA:  
1911.**

*(Scarce)*

## Members of the Board of Directors 1911.

### CHAIRMAN :

SIR GEORGE C. GIBBONS, K. C.

### VICE-CHAIRMAN :

HUGH A. MCCALLUM, M. D., M. R. C. P., ENG.

### SECRETARY :

JOSEPH C. JUDD, K. C.,

Chairman of the Board of Hospital Trustees  
of the City of London.

### OTHER MEMBERS :

THE CHANCELLOR OF THE WESTERN UNIVERSITY.  
F. R. ECCLES, M. D., M. R. C. S., ENG.  
JOHN WISHART, M. D., M. R. C. S., ENG.  
W. E. WAUGH, M. D., C. M.  
ROBERT FERGUSON, M. A., M. D.  
HADLEY WILLIAMS, M. D., F. R. C. S., ENG.  
C. R. SOMERVILLE AND THOMAS J. MURPHY.

56692



RULES FOR THE GOVERNMENT OF THE  
INSTITUTE OF PUBLIC HEALTH  
AND PREVENTIVE MEDICINE.

I.—The institution shall be called the Institute of Public Health and Preventive Medicine.

II.—Its main purpose shall be the maintenance of public health, and the advancement of scientific preventive methods against disease.

III.—It shall be carried on in connection with the Western University ; and in co-operation with the several faculties of that institution, for mutual aid and advancement ; but more directly in co-operation with the Faculty of Medicine of the University.

IV.—The educational branch of the Institute shall include instruction to the medical health officers of the Province, both *intra* and *extra mural* ; and shall also include a course of studies leading to a certificate of qualification for the office of medical health officer, or to a diploma ; as well as a course leading to the degree of doctor of public health ; each of the Western University.

V.—It shall also include analyses for public purposes ; and, in case of need, the Pasteur treatment for rabies.

VI.—It shall also include the publication, from time to time, of such information as may be deemed advisable in the interests of public health and the prevention of disease.

VII.—And it shall also include, when funds are

provided for the purpose, original scientific research in the interests of public health, and for the prevention and cure of disease.

VIII.—The building, heretofore called the Hygienic Institute, shall be used for such purposes.

IX.—The institution shall be governed by a Board of Directors, comprising: (1) the Chancellor of the Western University, (2) the Chairman of the Board of Hospital Trustees of the City of London, (3) four directors to be appointed annually by the Board of Governors of the Western University, and (4) six directors to be appointed in like manner by the Faculty of Medicine of the Western University; and each director shall hold office until a successor shall be appointed.

X.—Five members of the Board shall be a quorum; and each member shall be entitled to one vote; in case of an equality of votes the resolution or motion shall fail.

XI.—The Board shall appoint one of its members to be its Chairman, and another to be its Vice-Chairman. The Vice-Chairman, in all things, shall act as chairman in the absence of the Chairman.

XII.—The Board shall also appoint a Secretary, who may be one of its members.

XIII.—The Board shall meet once a month—except in the months of July and August—for the transaction of all its general business, at such time and place as the Board may, from time to time, appoint; special meetings, for any special or urgent purpose, may be held, on reasonable notice, at such time and place as the Chairman may appoint; and such a meeting shall be so held upon the written request of any three members of the Board.

XIV.—No member of the Board shall have any kind of money interest in the institution, or in any of its affairs or business; such an interest shall disqualify.

XV.—The institution shall be under the direct control and management of an officer, to be called its Chief Director, to be appointed by the P. . . before any but preliminary steps are taken for putting the institution in operation. He shall also be the Chief Executive Officer ~~of the institution~~  
~~and shall be~~

XVI.—The Board shall appoint and employ such other officers and servants as may seem to it to be necessary and proper, and shall prescribe the duties and fix the remuneration of all the paid officers and servants of the institution; but no officer or servant shall be appointed or employed except on the nomination and with the approval of the Chief Director.

XVII.—The Board shall appoint a bursar, through whose hands all the moneys of the institution shall pass and who shall be directly accountable for them. Before entering upon the duties of his office he shall be required to give ample security for the due performance of all of his duties, including the due accounting for all such moneys.

XVIII.—As far as shall be practicable, all moneys shall be paid, both in and out, by cheque.

XIX.—A banking account shall be forthwith opened with some bank of high standing in London, and all moneys received shall, on the day of their receipt if possible, and if not on the next following day, be deposited to the credit of the institution in

such banking account. All cheques payable to the institution shall be endorsed for deposit to the credit of such account only, and may be so endorsed by the Bursar, or by the Chief Director or the Chairman of the Board.

XX. — All payments out shall be made by cheque, signed by the Bursar, or by some other person appointed temporarily, by the Board, to act in his stead; and shall be countersigned by the Chairman of the Board; but no payment out shall be made until authorised by the Financial Committee hereinafter mentioned.

XXI.—The Board shall appoint a committee of at least three of its members as its Financial Committee; which committee shall have the charge and oversight of all the finances of the institution, and shall examine and pass upon all accounts and claims and authorize payment of them before any payment shall be made.

XXII.—This committee shall cause a monthly audit to be made, and shall, monthly, make investigation of the financial affairs of the institution; and shall at least as often as once in every three months present to the Board a statement of such affairs, which shall forthwith, after being so presented, be examined and considered by the Board.

XXIII.—The Board may also appoint such other committees as it may deem necessary for the better performance of its duties; such committees to be composed of at least three of its members; their duties shall be such as the Board, having power to delegate, shall from time to time prescribe.

XXIV.—The Chairman of the Board shall be, by virtue of his office, a member of all committees, but shall not be counted in the minimum number to be appointed by the Board.





