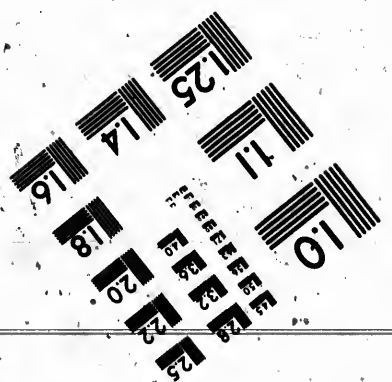
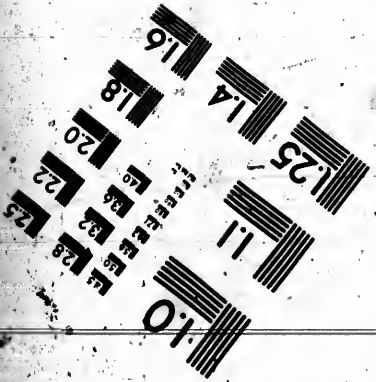
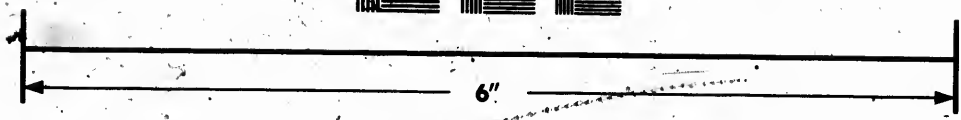


**IMAGE EVALUATION
TEST TARGET (MT-3)**



**Photographic
Sciences
Corporation.**

23 WEST MAIN STREET.
WEBSTER, N.Y. 14580
(716) 872-4503

18
20
22
25

**CIHM
Microfiche
Series
(Monographs)**

**ICMH
Collection de
microfiches
(monographies)**



Canadian Institute for Historical Microreproductions / Institut canadien de microreproductions historiques

11
10

© 1991

Technical and Bibliographic Notes / Notes techniques et bibliographiques

The Institute has attempted to obtain the best original copy available for filming. Features of this copy which may be bibliographically unique, which may alter any of the images in the reproduction, or which may significantly change the usual method of filming, are checked below:

L'Institut a microfilmé le meilleur exemplaire qu'il lui a été possible de se procurer. Les détails de cet exemplaire qui sont peut-être uniques du point de vue bibliographique, qui peuvent modifier une image reproduite, ou qui peuvent exiger une modification dans la méthode normale de filmage sont indiqués ci-dessous.

- Coloured covers/
Couverture de couleur
- Covers damaged/
Couverture endommagée
- Covers restored and/or laminated/
Couverture restaurée et/ou pelliculée
- Cover title missing/
Le titre de couverture manque
- Coloured maps/
Cartes géographiques en couleur
- Coloured ink (i.e. other than blue or black)/
Encre de couleur (i.e. autre que bleue ou noire)
- Coloured plates and/or illustrations/
Planches et/ou illustrations en couleur
- Bound with other material/
Relié avec d'autres documents
- Tight binding may cause shadows or distortion
along interior margin/
La reliure serrée peut causer de l'ombre ou de la
distorsion le long de la marge intérieure
- Blank leaves added during restoration may appear
within the text. Whenever possible, these have
been omitted from filming/
Il se peut que certaines pages blanches ajoutées
lors d'une restauration apparaissent dans le texte,
mais, lorsque cela était possible, ces pages n'ont
pas été filmées.

- Coloured pages/
Pages de couleur
- Pages damaged/
Pages endommagées
- Pages restored and/or laminated/
Pages restaurées et/ou pelliculées
- Pages discoloured, stained or foxed/
Pages décolorées, tachetées ou piquées
- Pages detached/
Pages détachées
- Showthrough/
Transparence
- Quality of print varies/
Qualité inégale de l'impression
- Continuous pagination/
Pagination continue
- Includes index(es)/
Comprend un (des) index
- Title on header taken from: /
Le titre de l'en-tête provient:
- Title page of issue/
Page de titre de la livraison
- Caption of issue/
Titre de départ de la livraison
- Masthead/
Générique (périodiques) de la livraison

- Additional comments: /
Commentaires supplémentaires:

This item is filmed at the reduction ratio checked below /
Ce document est filmé au taux de réduction indiqué ci-dessous.

10X	14X	18X	22X	26X	30X
<input type="checkbox"/>	<input type="checkbox"/>	<input checked="" type="checkbox"/>	<input type="checkbox"/>	<input type="checkbox"/>	<input type="checkbox"/>
12X	16X	20X	24X	28X	32X

The copy filmed here has been reproduced thanks to the generosity of:

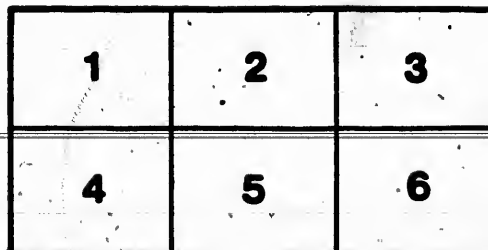
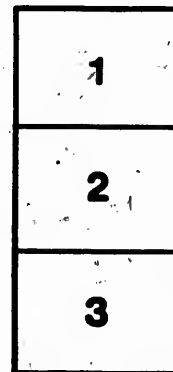
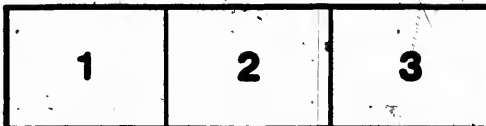
Library of the National Archives of Canada

The images appearing here are the best quality possible, considering the condition and legibility of the original copy and in keeping with the filming contract specifications.

Original copies in printed paper covers are filmed beginning with the front cover and ending on the last page with a printed or illustrated impression, or the back cover when appropriate. All other original copies are filmed beginning on the first page with a printed or illustrated impression, and ending on the last page with a printed or illustrated impression.

The last recorded frame on each microfiche shall contain the symbol \rightarrow (meaning "CONTINUED"), or the symbol ∇ (meaning "END"), whichever applies.

Maps, plates, charts, etc., may be filmed at different reduction ratios. Those too large to be entirely included in one exposure are filmed beginning in the upper left hand corner, left to right and top to bottom, as many frames as required. The following diagrams illustrate the method:



L'exemplaire filmé fut reproduit grâce à la générosité de:

La bibliothèque des Archives nationales du Canada

Les images suivantes ont été reproduites avec le plus grand soin, compte tenu de la condition et de la netteté de l'exemplaire filmé, et en conformité avec les conditions du contrat de filmage.

Les exemplaires originaux dont la couverture en papier est imprimée sont filmés en commençant par le premier plat et en terminant soit par la dernière page qui comporte une empreinte d'impression ou d'illustration, soit par le second plat, selon le cas. Tous les autres exemplaires originaux sont filmés en commençant par la première page qui comporte une empreinte d'impression ou d'illustration et en terminant par la dernière page qui comporte une telle empreinte.

Un des symboles suivants apparaîtra, sur la dernière image de chaque microfiche, selon le cas: le symbole \rightarrow signifie "A SUIVRE", le symbole ∇ signifie "FIN".

Les cartes, planches, tableaux, etc., peuvent être filmés à des taux de réduction différents. Lorsque le document est trop grand pour être reproduit en un seul cliché, il est filmé à partir de l'angle supérieur gauche, de gauche à droite, et de haut en bas, en prenant le nombre d'images nécessaire. Les diagrammes suivants illustrent la méthode.

THE WINTER FUEL



GAS COKE

**HEATS HOUSES THAT HARD
COAL CANNOT GET WARM. A
TRIAL WILL CONVINCE YOU**



**ORDERS TAKEN AT GAS OFFICE,
PARK STREET NORTH.**



You can save one-third your annual fuel bill by using our GENUINE GAS COKE.

This is the material to use in a climate where artificial heat is required during eight months of the average year, and the fuel bill comprises 10 to 20 per cent. of the household expense.

This estimate of saving is not based on opinion but on experience, and on the experience of your acquaintances and neighbors.

Parties who are using this fuel will unhesitatingly verify this statement.

Genuine Gas Coke.

What it is.

A granular porous by-product of coal gas manufacture, composed of almost pure gray carbon, which possesses the highest heating value.

It is sold in two sizes, large or "factory" size, suitable for all factory purposes or large surface burning furnaces, small or "domestic" size, adapted to hot air or hot water furnaces, stoves, grates and all base-burning or magazine stoves.

Qualities and Characteristics.

Ignites quickly. Burns freely under full draft. Burns slowly and steadily under checked draft. It is very tenacious in combustion and holds fire a long time, usually until wholly consumed.

Being free from smoke or soot, it gives the cleanest service, great heat, and the highest efficiency of any available fuel.

Its Uses.

As a domestic fuel, its special advantages are: Great economy, lightness and convenience in handling, and entire freedom from smoke, soot or dust.

Fifty bushels of Gas Coke are more than equal to one ton of anthracite coal. This is true not only in technical heat units, but also in results secured in practical use.

It can be used to advantage in furnace, stove or grate, but, like other fuels, its proper use will produce the greatest economy.

We solicit an order for your season's supply or sample lot, and assure you it will have our prompt and most careful attention.

We will, on request, ascertain if your apparatus is adapted to burning coke, or advise you as to the best and most economical methods for its use.

HAMILTON GAS-LIGHT CO.,

Office, PARK ST. NORTH

Directions for Use.

We suggest the following general directions for its domestic use, which we believe will apply with equal value to any form of solid fuel.

The front dampers and doors of the stove or furnace should close so tightly that no air is admitted except as required.

There should be ample provision of back dampers in the smoke or escape pipe. If the chimney or flue has unusually good draft, two dampers should be provided. Dampers should have a vent or safety hole, and to act as a check to draught more than an absolute shut off.

The apparatus, stove, furnace or grate should always be filled full of coke, as it is much better to have a large volume of fire at a low temperature than a small volume at a high temperature.

The damper in the firing door of a furnace should never be left open when using coke, as it tends to increase the combustion rather than to cool the fuel.

If it is desired to check the fire more than is accomplished by dampers, a shovel or two of ashes may be thrown over the fire, and thus bank it. The same method may be employed when it is desired to bank a fire for ten or twelve hours or even longer.

The ash pan beneath grate in a stove or furnace should be cleared or emptied as often as possible. This is important, and will absolutely prevent damage to grates.

It will usually be found unnecessary to shake the ashes down oftener than once or, in cold weather, twice in twenty-four hours. It is much better to dislodge the ashes by thrusting and stirring with a poker between the grate and the fire-pot.

A base-burner stove, having a magazine cylinder of less than ten inches diameter, or a grate with a very small basket, is not adapted to burn coke, and will not give efficient results.

Our Gas Coke

is made from the best Youghiogeny Gas
Coal.

Is the cleanest solid fuel known.

Fires freely and quickly under full draught.

Keeps fire perfectly with checked draft.

Is light and easily handled.

Needs little attention.

Does not clinker.

Does not give off the noxious gases of an-
thracite coal.

Can be used in furnace, stove or grate.

Combines the advantages of hard coal and
of wood.

Is fully one-third cheaper than coal or wood.

Is in all respects an ideal fuel.

All this you can verify by giving it a fair
trial.

DO YOU CARE TO SAVE MONEY?

Do Not Confound

our Genuine Gas Coke with the cheap cokes claimed to be just as good or better. All of them are imitations or substitutes and inferior in every respect.

They are usually made from slack or other unsaleable coal, and are the product of a forty-eight hour oven.

Our coke is four-hour coke, and consequently far more powerful, efficient and economical.

The Terms

are cash with order or on delivery, and all orders should be given at the office.



PRICE OF COKE

IN OUR YARD.

PRESENT PRICES SUBJECT TO CHANGE
WITHOUT NOTICE.

Any number of bushels under
100, at 10c. per bush.
100 to 300 bush's, @ 9c. "
300 to 500 " @ 8c. "
500 to 1000 " @ 7c. "
1000 or over, @ 6c. "

DELIVERY, 25c. per load of 25 bushels,
or any part thereof, within
city limits.

CARRYING Coke from wagon to cellar,
extra.

