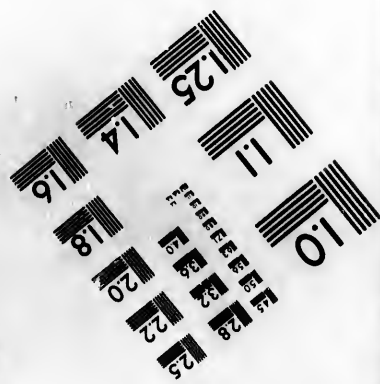
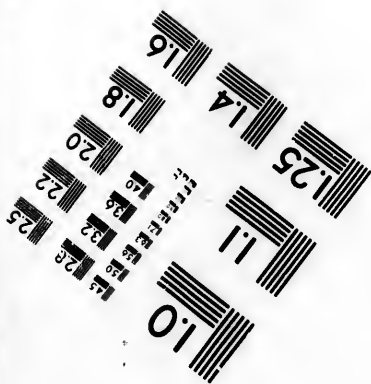
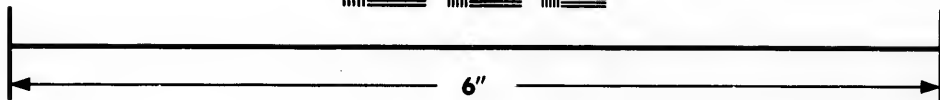
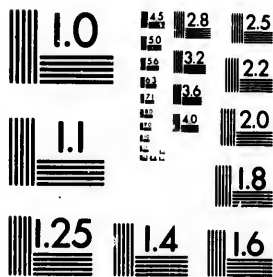


**IMAGE EVALUATION
TEST TARGET (MT-3)**



**Photographic
Sciences
Corporation**

23 WEST MAIN STREET
WEBSTER, N.Y. 14580
(716) 872-4503

**CIHM/ICMH
Microfiche
Series.**

**CIHM/ICMH
Collection de
microfiches.**



Canadian Institute for Historical Microreproductions / Institut canadien de microreproductions historiques

© 1984

Technical and Bibliographic Notes/Notes techniques et bibliographiques

The Institute has attempted to obtain the best original copy available for filming. Features of this copy which may be bibliographically unique, which may alter any of the images in the reproduction, or which may significantly change the usual method of filming, are checked below.

L'Institut a microfilmé le meilleur exemplaire qu'il lui a été possible de se procurer. Les détails de cet exemplaire qui sont peut-être uniques du point de vue bibliographique, qui peuvent modifier une image reproduite, ou qui peuvent exiger une modification dans la méthode normale de filmage sont indiqués ci-dessous.

- Coloured covers/
Couverture de couleur
- Covers damaged/
Couverture endommagée
- Covers restored and/or laminated/
Couverture restaurée et/ou pelliculée
- Cover title missing/
Le titre de couverture manque
- Coloured maps/
Cartes géographiques en couleur
- Coloured ink (i.e. other than blue or black)/
Encre de couleur (i.e. autre que bleue ou noire)
- Coloured plates and/or illustrations/
Planches et/ou illustrations en couleur
- Bound with other material/
Relié avec d'autres documents
- Tight binding may cause shadows or distortion along interior margin/
La reliure serrée peut causer de l'ombre ou de la distorsion le long de la marge intérieure
- Blank leaves added during restoration may appear within the text. Whenever possible, these have been omitted from filming/
Il se peut que certaines pages blanches ajoutées lors d'une restauration apparaissent dans le texte, mais, lorsque cela était possible, ces pages n'ont pas été filmées.
- Additional comments:/
Commentaires supplémentaires:

- Coloured pages/
Pages de couleur
- Pages damaged/
Pages endommagées
- Pages restored and/or laminated/
Pages restaurées et/ou pelliculées
- Pages discoloured, stained or foxed/
Pages décolorées, tachetées ou piquées
- Pages detached/
Pages détachées
- Showthrough/
Transparence
- Quality of print varies/
Qualité inégale de l'impression
- Includes supplementary material/
Comprend du matériel supplémentaire
- Only edition available/
Seule édition disponible
- Pages wholly or partially obscured by errata slips, tissues, etc., have been refilmed to ensure the best possible image/
Les pages totalement ou partiellement obscurcies par un feuillet d'errata, une pelure, etc., ont été filmées à nouveau de façon à obtenir la meilleure image possible.

This item is filmed at the reduction ratio checked below/
Ce document est filmé au taux de réduction indiqué ci-dessous.

10X	14X	18X	22X	26X	30X
<input type="checkbox"/>	<input type="checkbox"/>	<input type="checkbox"/>	<input checked="" type="checkbox"/>	<input type="checkbox"/>	<input type="checkbox"/>
12X	16X	20X	24X	28X	32X

The copy filmed here has been reproduced thanks to the generosity of:

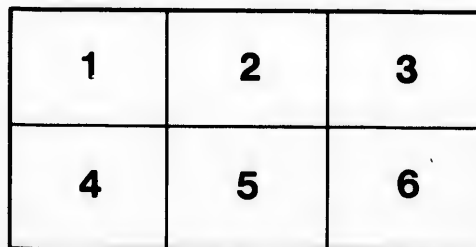
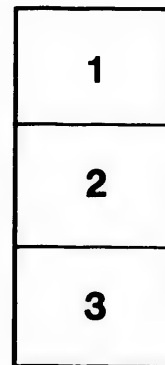
Library of the Public
Archives of Canada

The images appearing here are the best quality possible considering the condition and legibility of the original copy and in keeping with the filming contract specifications.

Original copies in printed paper covers are filmed beginning with the front cover and ending on the last page with a printed or illustrated impression, or the back cover when appropriate. All other original copies are filmed beginning on the first page with a printed or illustrated impression, and ending on the last page with a printed or illustrated impression.

The last recorded frame on each microfiche shall contain the symbol \rightarrow (meaning "CONTINUED"), or the symbol ∇ (meaning "END"), whichever applies.

Maps, plates, charts, etc., may be filmed at different reduction ratios. Those too large to be entirely included in one exposure are filmed beginning in the upper left hand corner, left to right and top to bottom, as many frames as required. The following diagrams illustrate the method:



L'exemplaire filmé fut reproduit grâce à la générosité de:

La bibliothèque des Archives
publiques du Canada

Les images suivantes ont été reproduites avec le plus grand soin, compte tenu de la condition et de la netteté de l'exemplaire filmé, et en conformité avec les conditions du contrat de filmage.

Les exemplaires originaux dont la couverture en papier est imprimée sont filmés en commençant par le premier plat et en terminant soit par la dernière page qui comporte une empreinte d'impression ou d'illustration, soit par le second plat, selon le cas. Tous les autres exemplaires originaux sont filmés en commençant par la première page qui comporte une empreinte d'impression ou d'illustration et en terminant par la dernière page qui comporte une telle empreinte.

Un des symboles suivants apparaîtra sur la dernière image de chaque microfiche, selon le cas: le symbole \rightarrow signifie "A SUIVRE", le symbole ∇ signifie "FIN".

Les cartes, planches, tableaux, etc., peuvent être filmés à des taux de réduction différents. Lorsque le document est trop grand pour être reproduit en un seul cliché, il est filmé à partir de l'angle supérieur gauche, de gauche à droite, et de haut en bas, en prenant le nombre d'images nécessaire. Les diagrammes suivants illustrent la méthode.

re
détails
es du
modifier
er une
filmage

es

arrata
to

pelure,
n à

32X

B

PU

INFORMATION

PUBLISHED BY

HIS MAJESTY'S COMMISSIONERS

FOR

EMIGRATION,

RESPECTING THE

BRITISH COLONIES IN NORTH AMERICA.

LONDON :

PUBLISHED BY CHARLES KNIGHT, PALL MALL EAST,

Publisher to the Society for the Diffusion of Useful Knowledge,

AND SOLD BY ALL BOOKSELLERS AND NEWSVENDERS.

PRICE TWO-PENCE,

or, One Shilling and Nine-Pence per Dozen, for Distribution.

BY AUTHORITY:
J. HARTNELL, FLEET STREET.

1832
(19)

62 1/2

To
tion as
Emigr
Posses

In t
the ass
proce
allowe
Coloni
Land,
all the
by Sp
by thei
purpos
less of
Govern
knowle
to whic

No a
is allow
work c

INFORMATION,

8c. 8c.

COLONIAL OFFICE,

9th February, 1832.

THE object of the present Notice is to afford such information as is likely to be useful to Persons who desire either to Emigrate, or to assist others to Emigrate, to the British Possessions in North America.

In the first place, it seems desirable to define the nature of the assistance to be expected from Government by Persons proceeding to these Colonies. No pecuniary aid will be allowed by Government to Emigrants to the North American Colonies; nor after their arrival will they receive Grants of Land, or gifts of Tools, or a supply of Provisions. Hopes of all these things have been sometimes held out to Emigrants by Speculators in this Country, desirous of making a profit by their conveyance to North America, and willing for that purpose to delude them with unfounded expectations, regardless of their subsequent disappointment. But the wish of Government is to furnish those who Emigrate with a real knowledge of the circumstances they will find in the Countries to which they are going.

No assistance of the extraordinary extent above described is allowed, because in Colonies where those who desire to work cannot fail to do well for themselves, none such is

needed. Land, indeed, used formerly to be granted gratuitously; but when it was taken by poor people, they found that they had not the means of living during the interval necessary to raise their Crops, and further, that they knew not enough of the manner of farming in the Colonies to make any progress. After all, therefore, they were obliged to work for wages, until they could make a few savings, and could learn a little of the way of farming in Canada. But now, land is not disposed of except by sale. The produce of the sales, although the price is very moderate, is likely to become a considerable fund which can be turned to the benefit of the Colonies, and therefore of the Emigrants; while yet no hardship is inflicted on the poor Emigrant, who will work for wages just as he did before, and may after a while acquire Land, if Land be his object, by the savings which the high wages in these Colonies enable him speedily to make.

These are the reasons why Government does not think it necessary to give away Land in a Country, where, by the lowness of its price, the plentifulness of work, and the high rates of wages, an industrious Man can earn enough in a few Seasons to become a freeholder by means of his own acquisitions.

The Land which is for sale will be open to Public competition, and of course, therefore, its price must depend upon the offers that may be made; but it will generally not be sold for less than from 4s. to 5s. per acre; and in situations where roads have been made, or the ground has been partially cleared, the common prices lately have been 7s. 6d., 10s., and

15s.
wher
circu

Al
exper
maint
be, w
Emig
acqu
to po
gener
have
engag
will b
the C
consu
as po
are ex
keepi
has b
again
ing an
it see
furnish
shoul
instea
Count
in effe

15s. Further particulars will be best learned upon the spot, where every endeavour will be made to meet the different circumstances and views of different purchasers.

Although Government will not make any gifts at the Public expense to Emigrants to North America, Agents will be maintained at the principal Colonial Ports, whose duty it will be, without fee or reward from private individuals, to protect Emigrants against imposition upon their first landing, to acquaint them with the demand for labour in different districts, to point out the most advantageous routes, and to furnish them generally with all useful advice upon the objects which they have had in view in emigrating. And when a private engagement cannot be immediately obtained, employment will be afforded on some of the Public Works in progress in the Colonies. Persons newly arrived should not omit to consult the Government Agent for Emigrants, and as much as possible should avoid detention in the Ports, where they are exposed to all kinds of impositions and of pretexts for keeping them at Taverns till any money they may possess has been expended.—For the same purpose of guarding against the frauds practised on new comers, and of preventing an improvident expenditure at the first moment of arrival, it seems very desirable that individuals who may wish to furnish Emigrants with money for their use in the Colony, should have the means of making the money payable there, instead of giving it into the hands of the Emigrants in this Country. The Commissioners for Emigration are engaged in effecting general arrangements for this purpose, and due

notice will be given to the Public when they shall be completed.* Agents for Emigration have been appointed at St. John's, St. Andrew's, and Miramichi in New Brunswick; and at Quebec and York in Canada. The Agent at Quebec is A. C. Buchanan, Esq.; at St. John's, A. Wedderburn, Esq.; at St. Andrews, G. N. Smith, Esq.; at Miramichi, J. Cunard, Esq.; the name of the Agent at York has not yet been reported to the Colonial Department. On this whole subject of the manner of proceeding upon landing, it may be observed, in conclusion, that no effort will be spared to exempt Emigrants from any necessity for delay at the place of disembarkation, and from uncertainty as to the opportunities of at once turning their labour to account.

After this explanation of the extent of the aid to be expected from Government, the following Statements are subjoined of the ordinary charges for Passage to the North American Colonies, as well as of the usual rates of Wages and usual Prices in them, in order that every individual may have the means of judging for himself of the inducements to Emigrate to these parts of the British Dominions.

PASSAGE.

Passages to Quebec or New Brunswick may either be engaged *inclusive* of Provisions; or *exclusive* of Provisions, in which case the Ship Owner finds nothing but Water, Fuel, and Bed Places, without Bedding. Children under 14 years of

* Since this paper was first printed, the arrangements alluded to have been completed, and will be found described in the Postscript, at p. 11.

age are charged one half, and under 7 years of age one third, of the full price; and for Children under twelve months of age no charge is made. Upon these conditions the price of Passage from London, or from places on the East Coast of Great Britain, has generally been £6 with Provisions, or £3 without. From Liverpool, Greenock, and the principal Ports of Ireland, as the chances of delay are fewer, the charge is somewhat lower; this year it will probably be from £2 to £2 10s. without Provisions, or from £4 to £5 including Provisions. It is possible that in March and April Passages may be obtained from Dublin for 35s., or even 30s.; but the prices always grow higher as the season advances. In Ships sailing from Scotland or Ireland, it has mostly been the custom for Passengers to find their own Provisions; but this practice has not been so general in London, and some Ship Owners, sensible of the dangerous mistakes which may be made in this matter through ignorance, are very averse to receive Passengers who will not agree to be victualled by the Ship. Those who do resolve to supply their own Provisions, should at least be careful not to lay in an insufficient stock; 50 days is the shortest period for which it is safe to provide, and from London the passage is sometimes prolonged to 75 days.

The best months for leaving England are certainly March and April; the later Emigrants do not find employment so abundant, and have less time in the Colony before the commencement of Winter. The names of Vessels proceeding to the North American Colonies, and the addresses of their Brokers,

may be learnt at all Ports of the United Kingdom, including the Port of London, by *personal* application at the Custom House of each Port. The Officers of Customs, however, will not be able to answer written inquiries on the subject; and persons residing inland who may require information of this nature, must depute the inquiry to some one at the Port where they wish to embark. Many ships are advertised in the public newspapers.

Various frauds are attempted upon Emigrants which can only be effectually defeated by the good sense of the parties against whom they are contrived. Sometimes Agents take payment from the Emigrant for his passage, and then recommend him to some tavern, where he is detained from day to day, under false pretences for delay, until before the departure of the Ship the whole of his money is extracted from him. This of course cannot happen with Agents connected with respectable houses; but the best security is to name in the bargain for passage a particular day, after which, whether or not the Ship sails, the Passenger is to be received on board and victualled by the owners. In this manner the Emigrant cannot be intentionally brought to the place of embarkation too soon, and be compelled to spend his money at public houses, by false accounts of the time of sailing; for from the very day of his arrival at the Port, being the day previously agreed upon, the Ship becomes his Home.

The conveyance of Passengers to the British Possessions in North America is regulated by an Act of Parliament (9 Geo. IV.

c. 21
Ships
unless
and th
tons o
50 ga
Outme
carries
of the
betwe
of Pass
portion
of the
sengers
from th
£20 re
the Pe
The
His Ma
of its
Custom
Besid
to Can
the jou
at Quel
upon th
employ

c. 21), of which the following are the principal provisions: Ships are not allowed to carry Passengers to these Colonies unless they be of the height of five feet and a half between decks, and they must not carry more than 3 Passengers for every 4 tons of the registered burthen; there must be on board at least 50 gallons of pure Water, and 50 pounds of Bread, Biscuit, Oatmeal, or Bread Stuff, for each Passenger. When the Ship carries the full number of Passengers allowed by law, no part of the cargo, and no stores or provisions, may be carried between decks; but if there be less than the complete number of Passengers, goods may be stowed between decks in a proportion not exceeding 3 cubical feet for each Passenger wanting of the highest number. Masters of Vessels who land Passengers, unless with their own consent, at a place different from that originally agreed upon, are subject to a penalty of £20 recoverable by summary process before two Justices of the Peace in any of the North American Colonies.

The enforcement of this law rests chiefly with the Officers of His Majesty's Customs; and Persons having complaints to make of its infraction, should address themselves to the nearest Custom House.

Besides the sea voyage from England, Persons proceeding to Canada should be provided with the means of paying for the journey which they may have to make after their arrival at Quebec. The cost of this journey must, of course, depend upon the situation of the place where the individual may find employment, or where he may have previously formed a wish

to settle; but to all it will probably be useful to possess the following report of the prices of conveyance, during the last season, on the route from Quebec to York, the capital of Upper Canada. From Quebec to Montreal (180 miles), by steam-boat, the charge for an adult was 6*s.* 6*d.*; from Montreal to Prescott (120 miles), by boats or barges, 7*s.*; from Prescott to York (250 miles), by steam-boat, 7*s.* The journey, performed in this manner, usually occupies ten or twelve days; adding, therefore, 11*s.* for provisions, the total cost from Quebec to York (a distance of 550 miles) may be stated, according to the charges of last year, at £1. 11*s.* 6*d.* Persons who are possessed of sufficient means prefer to travel by land that part of the route where the River St. Lawrence is not navigable by steam-boats, and the journey is then usually performed in six days, at a cost of £6. It must be observed that the prices of conveyance are necessarily fluctuating, and that the foregoing account is only presented as sufficiently accurate for purposes of information in this Country; leaving it to the Government Agent at Quebec to supply Emigrants with more exact particulars, according to the circumstances of the time at which they may arrive.

RATES OF WAGES AND MARKET PRICES.

The Colonies in North America to which Emigrants can with advantage proceed, are Lower Canada, Upper Canada, and New Brunswick. From the reports received from the

other British Colonies in North America, namely, Prince Edward's Island, Newfoundland, Nova Scotia, and Cape Breton, it appears that they do not contain the means either of affording employment at wages to a considerable number of Emigrants, or of settling them upon land.

LOWER CANADA.

From LOWER CANADA the Commissioners for Emigration have not received the Official Reports which were required from the North American Colonies for the purpose of compiling the present Statement. They believe, however, that the following Account of the Prices of Grain and of Wages may be relied upon for its general correctness :—

	<i>s.</i>	<i>d.</i>
Wheat per bushel	4	6
Rye „	3	0
Maize „	2	6
Oats „	1	3
Wages of labourers	2	6 per day
Ship-builders, carpenters, joiners, } coopers, masons, and tailors . . }	5	0 „

UPPER CANADA.

The following Table exhibits the lowest and the highest price which the several articles therein-named bore, during the year 1831, in each of the principal districts of UPPER CANADA :—

	Eastern District.		Johnstown ditto.		Bathurst ditto.		Newcastle d	
	Lowest Price in 1831.	Highest Ditto.	Lowest.	Highest.	Lowest.	Highest.	Lowest.	Highest.
Wheat per bushel	£. s. d. 0 5 0	£. s. d. 0 5 6	£. s. d. 0 5 3	£. s. d. 0 6 9	£. s. d. 0 5 0	£. s. d. 0 5 0	£. s. d. 0 3 6	£. 0 0
Maize „ „	0 2 6	0 3 0	0 1 9	0 2 3	0 2 6	0 3 0	0 2 0	0 0
Oats „ „	0 1 3	0 1 8	0 1 3	0 1 6	0 1 6	0 2 0	0 1 3	0 0
Barley „ „	0 2 6	0 2 6	0 1 9	0 4 0	0 3 0	0 3 6	0 2 6	0 0
Potatoes per cwt.	0 1 3	} 0 1 6 per bushel }	} 0 1 3	} 0 1 9	} 0 1 3	} 0 1 9	} 0 2 0	} 0 0
Butter (fresh) per lb.	0 0 7½							
Ditto (salt). „ „	0 0 7½	0 0 7½	0 0 7½	0 0 10	0 0 7½	0 0 7½	0 0 7½	0 0
Cheese „ „	0 0 6	0 0 6	0 0 4	0 0 6	0 0 6	0 0 6	0 0 5	0 0
Eggs per dozen	0 0 5	0 0 9	0 0 6	0 0 10	0 0 4	0 0 8	0 0 6	0 0
Ducks per pair	0 1 8	0 1 8	0 1 6	0 2 0	0 2 6	0 3 0	0 2 0	0 0
Fowls „ „	0 1 4	0 1 6	0 1 0	0 1 3	0 1 8	0 2 3	0 1 3	0 0
Geese „ „	0 4 0	0 5 0	0 2 4	0 2 6	0 4 0	0 4 0	0 2 6	0 0
Turkeys „ „	0 5 0	0 6 0	0 3 6	0 4 0	0 4 0	0 4 0	0 6 3	0 0
Hay per ton	1 15 0	2 5 0	1 10 0	2 10 0	2 0 0	2 10 0	1 10 0	3 1 0
Straw per load	0 16 8	0 16 8	0 5 0	0 10 0	0 7 6	0 7 6	0 5 0	0 0
Bread per 4lb. loaf	0 0 9	0 0 10	0 0 6	0 0 8	0 0 10	0 0 10	0 0 7½	0 0
MEAT, per lb.								
Beef	0 0 2½	0 0 3½	0 0 2½	0 0 4	0 0 4	0 0 4	0 0 2½	0 0
Mutton	0 0 3	0 0 4	0 0 2½	0 0 4	0 0 4	0 0 4	0 0 2½	0 0
Pork	0 0 4	0 0 5	0 0 4	0 0 6	0 0 3	0 0 3	0 0 3	0 0
Veal	0 0 3	0 0 3	0 0 2½	0 0 3	0 0 4	0 0 4	0 0 3	0 0
FLOUR, per 100 lbs.								
Fine	0 15 0	0 17 6	0 15 0	0 17 6	0 12 6	0 16 0	0 12 6	0 1 0
Seconds	0 12 6	0 12 6	0 12 6	0 15 0	0 10 6	0 12 6	0 10 0	0 1 0

Newcastle ditto.				Home ditto.				Gore ditto.				Niagara ditto.				London ditto (Huron tract).														
Lowest.		Highest.		Lowest.		Highest.		Lowest.		Highest.		Lowest.		Highest.		Lowest.		Highest.												
£.	s.	d.	£.	s.	d.	£.	s.	d.	£.	s.	d.	£.	s.	d.	£.	s.	d.	s.	d.											
0	3	6	0	6	3	0	3	9	0	5	3	0	4	4 ¹ / ₂	0	6	3	0	3	9	0	5	0	4	0	5	0			
6	0	3	0	2	0	0	2	0	0	2	9	0	2	6	0	2	6	0	2	6	0	2	6	3	9	3	9			
6	0	2	0	1	3	0	0	10	0	1	10 ¹ / ₂	0	1	3	0	1	10 ¹ / ₂	0	1	3	0	1	6	3	1 ¹ / ₂	3	1 ¹ / ₂			
0	0	3	0	2	6	0	0	3	0	2	3	0	0	3	0	2	6	0	0	2	0	2	6	3	9	3	9			
3	0	1	0	2	0	0	0	10	0	0	2	0	0	1	0	0	1	0	0	1	0	0	2	1	10 ¹ / ₂	2	6			
6	0	0	0	0	7 ¹ / ₂	0	0	7 ¹ / ₂	0	1	0	0	0	7 ¹ / ₂	0	0	7 ¹ / ₂	0	0	7 ¹ / ₂	0	0	7 ¹ / ₂	0	7 ¹ / ₂	1	0			
7 ¹ / ₂	0	0	0	0	7 ¹ / ₂	0	0	9	0	0	10	0	0	6	0	0	7 ¹ / ₂	0	0	6 ¹ / ₂	0	0	7 ¹ / ₂	0	7 ¹ / ₂	1	0			
6	0	0	0	0	5	0	0	0	0	0	6	0	0	5	0	0	0	0	0	4	0	0	6	0	7 ¹ / ₂	0	7 ¹ / ₂			
4	0	0	0	0	6	0	0	7 ¹ / ₂	0	0	7 ¹ / ₂	0	0	6	0	0	0	0	0	6	0	0	1	0	7 ¹ / ₂	0	7 ¹ / ₂			
6	0	3	0	2	0	0	0	2	0	1	3	0	0	2	0	0	2	0	0	1	0	3	0	2	0	2	0			
8	0	2	0	1	3	0	0	1	0	1	3	0	0	1	0	0	1	0	0	1	0	1	6	1	3	1	3			
0	0	4	0	0	2	0	0	3	0	3	3	0	0	5	0	0	3	0	0	3	0	3	9	2	6	2	6			
0	0	4	0	0	6	0	0	3	0	5	0	0	0	10	0	0	5	0	0	5	0	0	7	2	6	2	6			
0	2	10	1	10	0	3	10	0	1	10	0	2	10	0	2	0	0	1	15	0	2	10	0			
6	0	7	0	5	0	0	5	0	0	15	0	0	15	0	0	7	6	0	7	6	0	5	0			
10	0	0	0	0	7 ¹ / ₂	0	0	7 ¹ / ₂	0	0	4 ¹ / ₂	0	0	7	0	0	7 ¹ / ₂	0	0	7 ¹ / ₂	0	0	7	0	0	8
4	0	0	0	0	2 ¹ / ₂	0	0	3	0	0	3	0	0	5	0	0	3	0	0	3 ¹ / ₂	0	0	2	0	3 ¹ / ₂	0	3 ¹ / ₂			
4	0	0	0	0	2 ¹ / ₂	0	0	3	0	0	5	0	0	7 ¹ / ₂	0	0	3	0	0	3 ¹ / ₂	0	0	2	0	0	3 ¹ / ₂	0	3 ¹ / ₂		
3	0	0	0	0	3	0	0	4	0	0	3	0	0	6	0	0	2	0	0	2 ¹ / ₂	0	0	3 ¹ / ₂	0	0	3 ¹ / ₂	0	7 ¹ / ₂		
4	0	0	0	0	3	0	0	3 ¹ / ₂	0	0	3	0	0	5	0	0	3	0	0	3 ¹ / ₂	0	0	2 ¹ / ₂	0	0	3 ¹ / ₂	0	4 ¹ / ₂		
9	0	16	0	12	6	0	17	6	0	12	6	0	15	0	0	14	6	0	15	0	0	12	6	0	15	0	15	0		
0	0	12	0	10	0	0	15	0	0	11	0	0	12	6	0	10	0	0	12	6	0	12	6	0	15	0		

From a comparison of all the Documents before the Commissioners for Emigration, it appears that the yearly wages of labourers in Upper Canada, hired by the year, are from £27 to £30; that their monthly wages, in different situations and at different seasons, range from £1. 10s. to £3. 10s. per month; and that daily wages range from 2s. to 3s. 9d. In all these rates of wages, board and lodging are found by the employer. Without board, daily wages vary from 3s. 6d. out of harvest to 5s. during harvest; 6s. 3d., besides provisions, is sometimes given to harvest men. The wages of mechanics may be stated universally at from 5s. to 7s. 6d. per day.

NEW BRUNSWICK.

The following is a List of Prices compiled from Documents sent in from various parts of NEW BRUNSWICK :—

	£	s.	d.	to	£	s.	d.
Wheat per bushel	0	5	0	to	0	10	0*
Maize „	0	4	6	...	0	5	0
Oats „	0	1	6	...	0	2	6
Barley „	0	4	0	...	0	5	0
Potatoes per cwt.	0	1	3	...	0	3	6
Butter (fresh) per lb.	0	0	9	...	0	1	0
Ditto (salt) „	0	0	8	...	0	0	10
Cheese „	0	0	4	...	0	0	7

* Although some Wheat fetched this Price in the course of 1831, the Price very rarely rises higher than 7s. 6d.

		£	s.	d.	to	£	s.	d.
Eggs	per dozen	0	0	7½	to	0	1	0
Ducks	per pair	0	2	0	...	0	3	6
Fowls	"	0	1	6	...	0	2	6
Geese	"	0	3	0	...	0	5	0
Turkeys	"	0	7	6	...	0	10	0
Hay	per ton	1	10	0	...	2	10	0
Straw	"	1	0	0	...	1	5	0
Bread	per 4lb. loaf	0	0	10	...	0	1	0
Beef	per stone	0	3	3	...	0	4	0
Mutton	"	0	2	4	...	0	4	0
Pork	"	0	2	0½	...	0	4	0
Veal	"	0	2	4	...	0	4	8
Flour	per 100 lbs.	0	16	0	...	0	17	6
Salt Pork	per barrel	4	15	0	...	5	5	0
Ditto Beef	"	3	0	0	...	3	10	0
Malt	per bushel	0	6	2	...	0	6	4
Rye flour	per barrel	1	2	6	...	—	—	—
Indian ditto	"	1	2	6	...	—	—	—
Oatmeal	per cwt.	0	16	0	...	0	18	0
Salt Cod	per 112 lbs.	0	10	0	...	0	12	0
Ditto Mackarel	per barrel	0	17	0	...	1	0	0
Ditto Alewives	"	0	10	0	...	0	12	0

Coals are sold at 30s. per chaldron. House rent at St John's is from £5 to £6 per annum for Families occupying one room; and for Families occupying two rooms, from £6 to £10. Common Labourers receive from 3s. to 4s. a day, finding their own sub-

sistence; but, when employed at the Ports in loading Vessels, their subsistence is found for them. Mechanics receive from 5s. to 7s. 6d. per day, and Superior Workmen from 7s. 6d. to 10s.

Upon the foregoing Statements it must be observed, that Emigrants, especially such of them as are agricultural Labourers, should not expect the highest wages named until they have become accustomed to the work of the Colony. The Mechanics most in demand are those connected with the business of house-building,—Shoemakers, and Tailors, and Ship-builders, also find abundant employment.

By Order of the Commissioners for Emigration,

T. FREDERICK ELLIOT.

POSTSCRIPT.

5th March.—Since the preceding pages were printed, the following Letter has been received from Messrs. Smith, Payne, and Smiths.

LOMBARD STREET,
23rd February, 1832.

SIR,—We have the honour to acknowledge the receipt of your Letter, and, in reply, we beg leave to acquaint you, for the information of the Commissioners for Emigration, that we have agreed to receive monies in London, on account of the Montreal Bank, and that any Emigrant who may think it more safe or advantageous to transfer his capital to the Canadas, through the medium of the Montreal Bank, than to carry it with him in specie, will have the opportunity of doing so.

On receiving a sum of money, on account of the Montreal Bank, we shall give a receipt in the following form:—

Received,.....18.....of the
 Montreal Bank, by A. B
 Pounds.....
 S. P. and S.

In cases where money is remitted to us, by country Bankers, on account of Emigrants, receipts will be sent to the country Banker making the remittance. The country Banker's charges on this transaction will, of course, fall upon the Emigrant.

We shall decline in all cases to take any money unless accompanied by the signature of the party who is to receive such money in Canada, excepting in cases where a remittance is wished to be made for the use of a person resident in Canada who can be readily identified by other means. The Emigrant, on his arrival, will present the receipt to the Montreal Bank, and the Bank will, we presume, draw upon us for the amount, and pay the Emigrant the proceeds of such bill at the Exchange of the day, in the manner consistent with its usual rules of business.

We wish it to be distinctly understood, that we do not engage to protect the Emigrant from any risk whatever, except the risk which might attach to the carrying the money with him. We simply undertake to honour the drafts of the Montreal Bank, from time to time, for such sums as may be paid into our hands on account of that Bank.

We are, Sir,

Your most obedient Servants,
 (Signed) SMITH, PAYNE, & SMITHS.

T. F. Elliot, Esq.
Sec. Sec. Sec.

P. S. We have omitted to mention that we are directed not to receive less than Twenty Pounds on account of any one individual.

The mode of proceeding described in this Letter is likely to be generally made use of, in order to avoid the risk of carrying money abroad in specie. For this purpose, persons who are emigrating to Canada will only need to deposit here the sum they desire to receive for their own use in the Colony, and to draw the amount after their arrival. But for persons residing in this country, who wish to remit money to Canada for the use of others assisted by them to emigrate, some further arrangement will be requisite. One course which may be followed by such persons will be, merely to give the Emigrant the means of depositing in England money payable in Canada, and in this manner to guard against the chances of the money's being lost, or improvidently expended, on the voyage. Should it be further desired to establish a control over the money, not merely until the voyage shall be completed but even after the Emigrant's disembarkation, it will be necessary that the persons providing funds with that view shall pay them into the house of Messrs. Smith, Payne, and Smiths, to the account of the Governor of Lower Canada with the Montreal Bank. The Governor will be directed to confide the application of such funds to an Officer appointed for the purpose, who will be required to give sufficient security, and will be bound to expend the money for the benefit of the Emigrants in the course of three months after their arrival. Within that period he must be allowed the exercise of his own discretion as to the occasions and proportions of the payments he may make. Persons desirous of availing themselves of this method of procuring the superintendance of Government for the expenditure of sums destined to the use of Emigrants, must fill up and sign two Lists containing the names and descriptions of all the Emigrants to receive portions of the deposit, together with the signature or mark of each Emigrant thereto affixed, and a statement of the amount appropriated to every individual. Each Emigrant must also be furnished with a separate certificate, stating his name and number on the List, and

the
of t
be d
Dep
ther
Em
grat
Stat
shor
Pay
Gov
sent
man
take
sign
mus
but
for

Nam
Em

N.
which
to sail

the amount to which he is entitled. Copies are subjoined of the Forms in which these lists and certificates should be drawn up. The lists will be forwarded by the Colonial Department; and for that purpose they should be sent there, at least three weeks before the departure of the Emigrants, under a cover marked with the word "Emigration," and addressed to "The Under Secretary of State, Colonial Department, London." At the same time should be enclosed the acknowledgment of Messrs. Smith, Payne, and Smiths, for the payment to the account of the Governor, without which acknowledgment no list will be sent forward. Neither can any list be forwarded, or the management of a deposit in the present manner be undertaken, unless the whole sum deposited by the individual signing the list amount at the least to 50^l. The certificates must be delivered to the several parties to whom they relate; but they should be sealed up, and addressed to "The Agent for Emigrants at *Quebec*," or "at *Montreal*."

FORM OF LIST.

Name of the Emigrant.	Age.	Trade or Callings.	Amount to be given to the Emigrant.	General Remarks.	Signature or Mark of the Emigrant.

N. B. At the Head of the List should be stated the Name of the Vessel in which the several parties are to embark, and the date at which she is expected to sail.

FORM OF CERTIFICATE.

I, A. B. do hereby certify that C. D., the bearer hereof, is the person described, as under, on the List forwarded by me to the Colonial Office; and that the amount therein stated, namely . . . Pounds, is the true amount which I desire to be paid to the said C. D.

*(Signature of the person making
the Deposit on account of the Emigrant.)*

No.	Name.	Age.	Trade or Calling	Amount to be given.	General Remarks.	Signature or mark of the Emigrant.

ereof,
d by
ated,
to be

ing
ant.)

mark rant.

