

**CIHM
Microfiche
Series
(Monographs)**

**ICMH
Collection de
microfiches
(monographies)**



Canadian Institute for Historical Microreproductions / Institut canadien de microreproductions historiques

© 1999

The
cop
may
the
sig
che



Th
Ce

10



Technical and Bibliographic Notes / Notes techniques et bibliographiques

The Institute has attempted to obtain the best original copy available for filming. Features of this copy which may be bibliographically unique, which may alter any of the images in the reproduction, or which may significantly change the usual method of filming are checked below.

- Coloured covers / Couverture de couleur
- Covers damaged / Couverture endommagée
- Covers restored and/or laminated / Couverture restaurée et/ou pelliculée
- Cover title missing / Le titre de couverture manque
- Coloured maps / Cartes géographiques en couleur
- Coloured ink (i.e. other than blue or black) / Encre de couleur (i.e. autre que bleue ou noire)
- Coloured plates and/or illustrations / Planches et/ou illustrations en couleur
- Bound with other material / Relié avec d'autres documents
- Only edition available / Seule édition disponible
- Tight binding may cause shadows or distortion along interior margin / La reliure serrée peut causer de l'ombre ou de la distorsion le long de la marge intérieure.
- Blank leaves added during restorations may appear within the text. Whenever possible, these have been omitted from filming / Il se peut que certaines pages blanches ajoutées lors d'une restauration apparaissent dans le texte, mais, lorsque cela était possible, ces pages n'ont pas été filmées.
- Additional comments / Commentaires supplémentaires:

L'Institut a microfilmé le meilleur exemplaire qu'il lui a été possible de se procurer. Les détails de cet exemplaire qui sont peut-être uniques du point de vue bibliographique, qui peuvent modifier une image reproduite, ou qui peuvent exiger une modification dans la méthode normale de filmage sont indiqués ci-dessous.

- Coloured pages / Pages de couleur
- Pages damaged / Pages endommagées
- Pages restored and/or laminated / Pages restaurées et/ou pelliculées
- Pages discoloured, stained or foxed / Pages décolorées, tachetées ou piquées
- Pages detached / Pages détachées
- Showthrough / Transparence
- Quality of print varies / Qualité inégale de l'impression
- Includes supplementary material / Comprend du matériel supplémentaire
- Pages wholly or partially obscured by errata slips, tissues, etc., have been refilmed to ensure the best possible image / Les pages totalement ou partiellement obscurcies par un feuillet d'errata, une pelure, etc., ont été filmées à nouveau de façon à obtenir la meilleure image possible.
- Opposing pages with varying colouration or discolourations are filmed twice to ensure the best possible image / Les pages s'opposant ayant des colorations variables ou des décolorations sont filmées deux fois afin d'obtenir la meilleure image possible.

This item is filmed at the reduction ratio checked below /
Ce document est filmé au taux de réduction indiqué ci-dessous.

	10x		14x		18x		22x		26x		30x	
					✓							
	12x		16x		20x		24x		28x		32x	

The copy filmed here has been reproduced thanks to the generosity of:

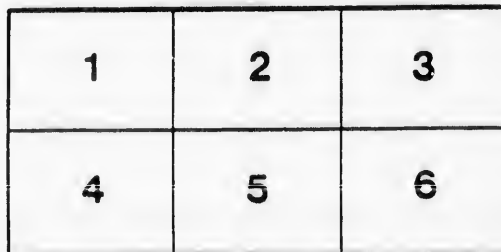
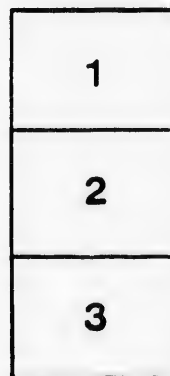
National Gallery of Canada,
Library

The images appearing here are the best quality possible considering the condition and legibility of the original copy and in keeping with the filming contract specifications.

Original copies in printed paper covers are filmed beginning with the front cover and ending on the last page with a printed or illustrated impression, or the back cover when appropriate. All other original copies are filmed beginning on the first page with a printed or illustrated impression, and ending on the last page with a printed or illustrated impression.

The last recorded frame on each microfiche shall contain the symbol \rightarrow (meaning "CONTINUED"), or the symbol ∇ (meaning "END"), whichever applies.

Maps, plates, charts, etc., may be filmed at different reduction ratios. Those too large to be entirely included in one exposure are filmed beginning in the upper left hand corner, left to right and top to bottom, as many frames as required. The following diagrams illustrate the method:



L'exemplaire filmé fut reproduit grâce à la générosité de:

Musée des Beaux-Arts du Canada,
Bibliothèque

Les images suivantes ont été reproduites avec le plus grand soin, compte tenu de la condition et de la netteté de l'exemplaire filmé, et en conformité avec les conditions du contrat de filmage.

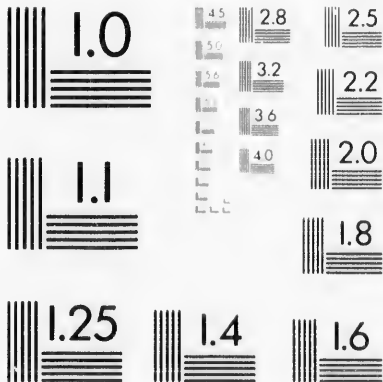
Les exemplaires originaux dont la couverture en papier est imprimée sont filmés en commençant par le premier plat et en terminant soit par la dernière page qui comporte une empreinte d'impression ou d'illustration, soit par le second plat, selon le cas. Tous les autres exemplaires originaux sont filmés en commençant par la première page qui comporte une empreinte d'impression ou d'illustration et en terminant par la dernière page qui comporte une telle empreinte.

Un des symboles suivants apparaîtra sur la dernière image de chaque microfiche, selon le cas: le symbole \rightarrow signifie "A SUIVRE", le symbole ∇ signifie "FIN".

Les cartes, planches, tableaux, etc., peuvent être filmés à des taux de réduction différents. Lorsque le document est trop grand pour être reproduit en un seul cliché, il est filmé à partir de l'angle supérieur gauche, de gauche à droite, et de haut en bas, en prenant le nombre d'images nécessaire. Les diagrammes suivants illustrent la méthode.

MICROCOPY RESOLUTION TEST CHART

ANSI and ISO TEST CHART No. 2



APPLIED IMAGE Inc

1453 East Main Street
Rochester, New York 14619 - U.S.A.
(716) 482-1300 - Phone
(716) 288-5989 - Fax



NINETY-THREE



TORONTO
ART
STUDENTS
LEAGUE

© How
7-8
1000



A CALENDAR
FOR
THE YEAR OF OUR LORD
MDCCCXIII

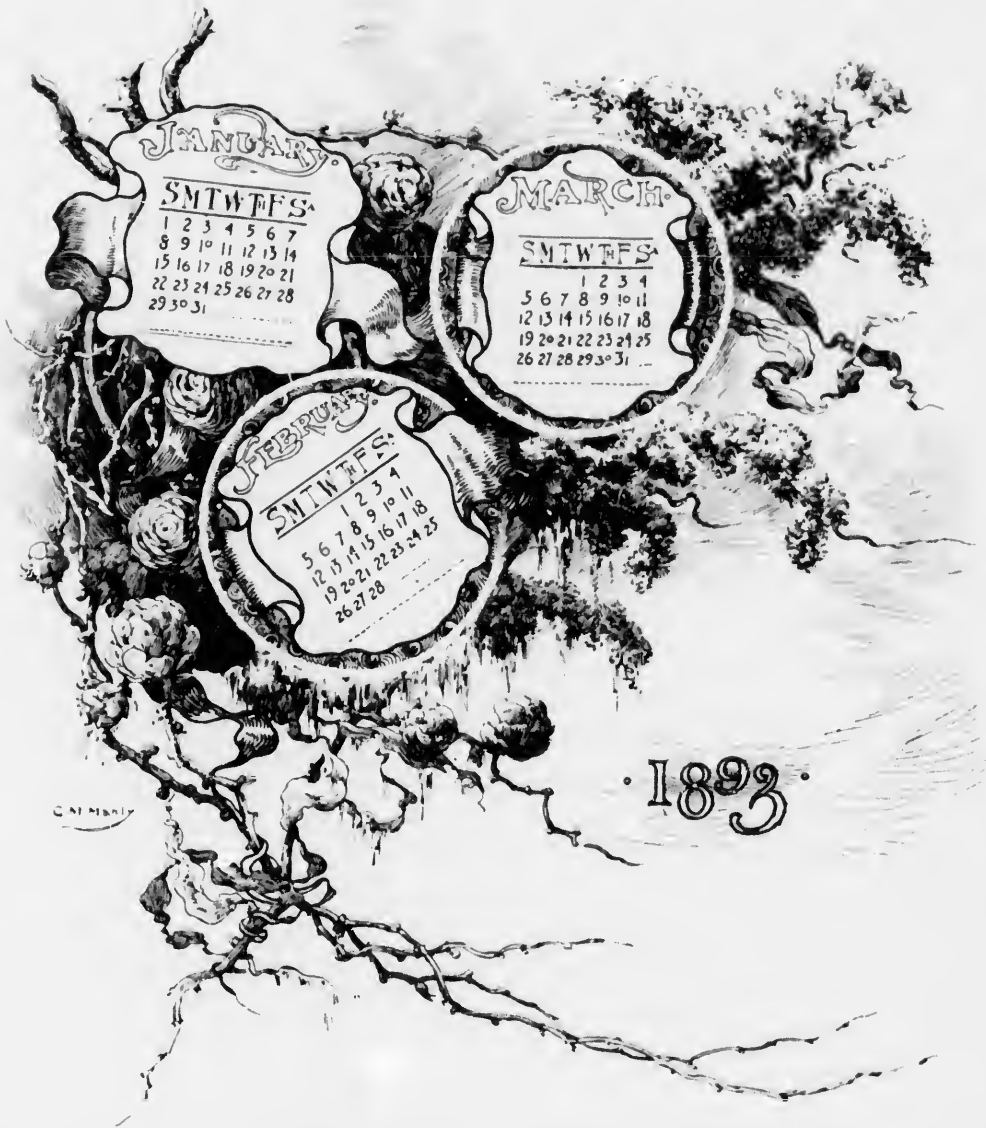
DESIGNED
& PUBLISHED
BY

THE TORONTO ART STUDENTS' LEAGUE

IMPERIAL BANK BLDG
TORONTO.

“ Through the pines of the north the dark Wind-singer strode,
As he hummed the first notes of a gale ;
While a ghostly white cloud of cold dust swept the road,
Rushing downwards to smother the vale.”

JAMES MCCARROLI.



JANUARY

SMTWFFS

1 2 3 4 5 6 7
8 9 10 11 12 13 14
15 16 17 18 19 20 21
22 23 24 25 26 27 28
29 30 31

MARCH

SMTWFFS

1 2 3 4
5 6 7 8 9 10 11
12 13 14 15 16 17 18
19 20 21 22 23 24 25
26 27 28 29 30 31

FEBRUARY

SMTWFFS

1 2 3 4
5 6 7 8 9 10 11
12 13 14 15 16 17 18
19 20 21 22 23 24 25
26 27 28

1893

C. H. B. B.

" I, the lion-throated,
The shaker of mountains !
I, the invincible,
Lasher of oceans !

. . . .
I, the invincible,
March, the earth-shaker ;
March, the sea-lifter,
March, the sky-render "

—ISABELLA VALANCEY CRAWFORD



WINTER

C. J. Jeffers
42

"This region is as lavish of its flowers
As Heaven of its primrose blooms by night."

—CHARLES MAIR.





APRIL

SUN	2	9	16	23	30
MON	3	10	17	24	
TUE	4	11	18	25	
WED	5	12	19	26	
THU	6	13	20	27	
FRI	7	14	21	28	
SAT	8	15	22	29	

MAY

SUN	7	14	21	28	
MON	1	8	15	22	29
TUE	2	9	16	23	30
WED	3	10	17	24	31
THU	4	11	18	25	
FRI	5	12	19	26	
SAT	6	13	20	27	

1893

JUNE

SUN	4	11	18	25	
MON	5	12	19	26	
TUE	6	13	20	27	
WED	7	14	21	28	
THU	8	15	22	29	
FRI	2	9	16	23	30
SAT	3	10	17	24	



‘But there’s something abroad in the air,
Perchance ’tis the spirit of spring,
That fills me with fancies
Of blue skies and pansies,
And songs that the meadow brooks sing”

—W. W. CAMPBELL.



" This, my friend, shall be our part
In this summer scheme of ours,
Just to grow a summer heart.

Fear to hurt and fear to thwart,
Clearer sense of mighty Powers
This, my friend, shall be our part,
Just to grow a summer heart "

—STRANUS.

JULY

S	M	T	W	T	F	S
						1
2	3	4	5	6	7	8
9	10	11	12	13	14	15
16	17	18	19	20	21	22
23	24	25	26	27	28	29
30	31					



W. B. BINGHAM
2

SEPTEMBER

S	M	T	W	T	F	S
3	4	5	6	7	8	9
10	11	12	13	14	15	16
17	18	19	20	21	22	23
24	25	26	27	28	29	30

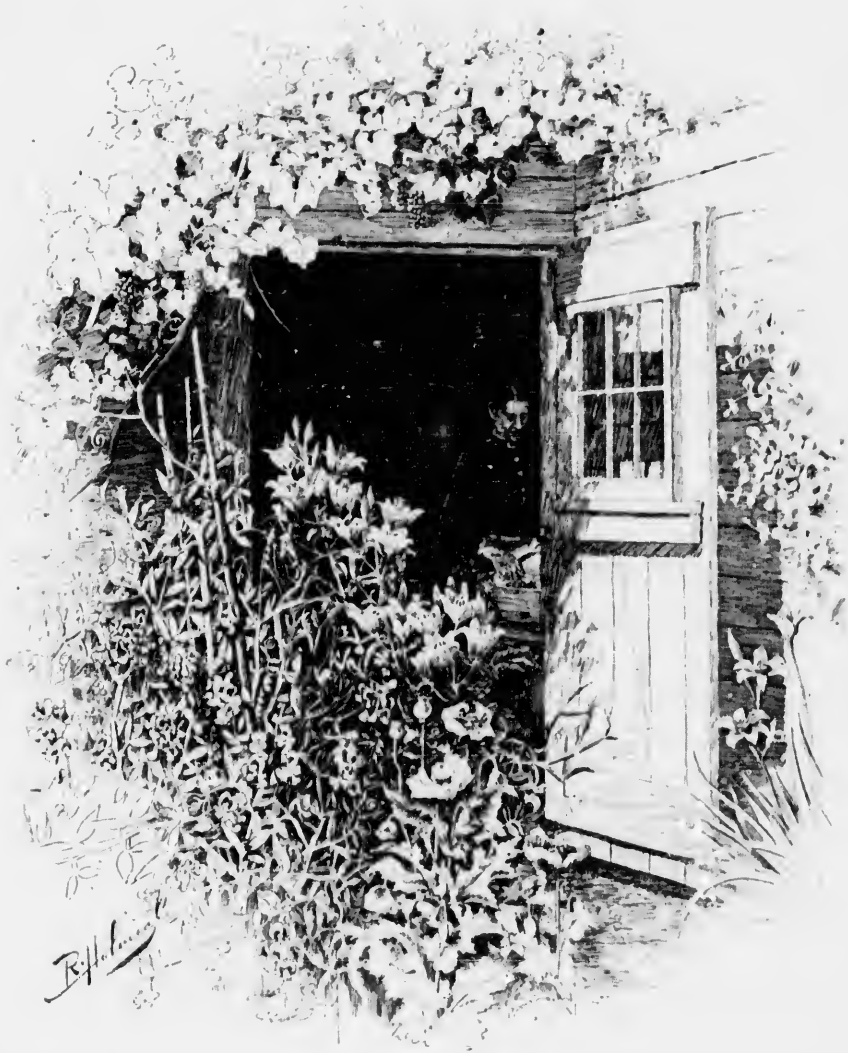
AUGUST

S	M	T	W	T	F	S
		1	2	3	4	5
6	7	8	9	10	11	12
13	14	15	16	17	18	19
20	21	22	23	24	25	26
27	28	29	30	31		



"Beyond me, in the fields the sun
Soaks in the grass, and hath his will."

LAMPMAN.



R. H. ...

"The apple harvest days are here,
The boding apple harvest days,
And down the flaming valley ways
The foresters of time draw near.

.
The apple harvest time is here,
The tender apple harvest time;
A sheltering calm, unknown at prime,
Settles upon the brooding year."

—BLISS CARMAN.

1893

OCTOBER

S	M	T	W	Th	F	Sa
1	2	3	4	5	6	7
8	9	10	11	12	13	14
15	16	17	18	19	20	21
22	23	24	25	26	27	28
29	30	31				

NOVEMBER

S	M	T	W	Th	F	Sa
			1	2	3	4
5	6	7	8	9	10	11
12	13	14	15	16	17	18
19	20	21	22	23	24	25
26	27	28	29	30		

ARS LONGA
VITA BREVIS

DECEMBER

S	M	T	W	Th	F	Sa
					1	2
3	4	5	6	7	8	9
10	11	12	13	14	15	16
17	18	19	20	21	22	23
24	25	26	27	28	29	30

c.w. Jefferys. 92.

"Against the distant purple hills
Rich autumn tints are glowing;
Its blood-red wine the sumach spills,
Deep hues of carmine showing

Haste to the woods! put books away,
They'll wait the tardy comer;
For them there's many a winter day,
But brief's our Indian Summer!"

—FIDELIS.



Faith, science, doubt profound,
Searching for ampler knowledge from afar,
By turns have soared to question every star,
Have probed the earth to tell us whence we are,
And whither bound.

Dim faithless world, roll on
Into thy future, while the Christ-sown seeds
Grow, not to lifeless words, but living deeds;
And living souls give utterance thus to creeds
Lest to Christ's own."

DANIEL WILSON.

1893 **SUNDAYS** 1894

JANUARY	
1	1st after Christmas
8	1st after Epiphany
15	2d
22	3d
29	Septuagesima
FEBRUARY	
5	Sexagesima
12	Quinquagesima
19	1st in Lent
26	2d
MARCH	
5	3d in Lent
12	4th
19	5th Passion
26	6th Palm
APRIL	
2	Easter
9	1st after Easter
16	2d
23	3d
30	4th
MAY	
7	Ascension
14	1st after Ascension
21	2d
28	Trinity
JUNE	
4	1st after Trinity
11	2d
18	3d
25	4th



JULY	
2	5th after Trinity
9	6th
16	7th
23	8th
30	9th
AUGUST	
6	10th after Trinity
13	11th
20	12th
27	13th
SEPTEMBER	
3	14th after Trinity
10	15th
17	16th
24	17th
OCTOBER	
1	18th after Trinity
8	19th
15	20th
22	21st
29	22d
NOVEMBER	
5	23d after Trinity
12	24th
19	25th
26	26th
DECEMBER	
3	1st in Advent
10	2d
17	3d
24	4th
31	1st after Christmas

COLLECT FOR DOMINION DAY.

“ Father of Nations! Help of the feeble hand,
Strength of the strong! to whom the nations kneel!
Stay and Destroyer, at whose just command
Earth's kingdoms tremble, and her empires reel!
Who dost the low uplift, the small make great,
And dost abase the ignorantly proud,
Of our scant people mould a mighty state,
To the strong stern, to Thee in meekness bowed!
Father of Unity, make this people one!
Weld, interfuse them in the patriot's flame,
Whose forging on Thine anvil was begun
In blood life shed to purge the common shame
That so our hearts, the fever of faction done,
Banish old feud in our young nation's name.”

— CHARLES G. D. ROBERTS.

FASTS FESTIVALS & ANNIVERSARIES

NEW YEAR'S
Sunday DAY
January 1st..

EPIPHANY
Friday
January 6th
Let shine for thy light is come.

ASH WEDNES
FIRST DAY OF LENT DAY
February 5th

ST DAVID'S
Wednesday DAY
March 1st

ST PATRICK'S
Friday DAY
March 17th

ANNUNCIATION
LADY DAY
Saturday Mar. 25

GOOD FRI-
DAY
March 31st
R. HOLMES

EASTER
Sunday
April 2nd

ST GEORGE'S
Sunday DAY
April 23rd

ASCENSION
HOLY THURSDAY
May 11th

QUEEN VICTORIA'S
BIRTHDAY
Wednesday May 24

DOMINION
Saturday DAY
July 1st

ST ANDREW'S
Thursday DAY
November 30th

CHRISTMAS
Monday
December 25th

"Then, to-night, I will chase my sorrow, with that last wild gust of December :
The gloom where I sit is gone, and the gleams of the morning appear :
The past shall be buried anew in the dust of the smouldering ember,
For the future rises before me in the flush of the dawning year."

LESPERANCE.



M. H. C. 1890

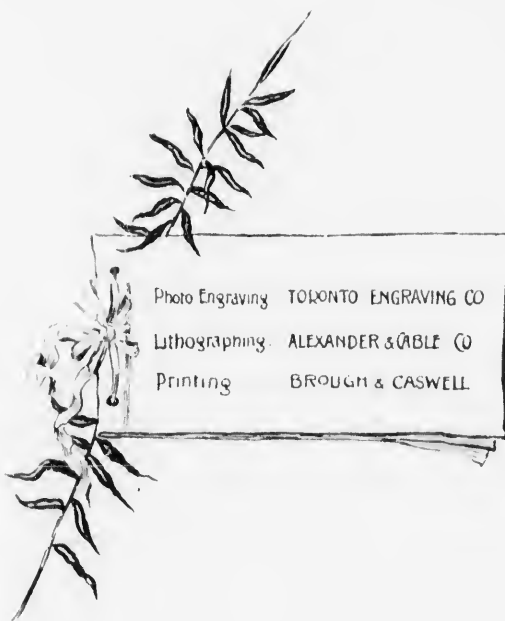


Photo Engraving TORONTO ENGRAVING CO

Lithographing ALEXANDER & GABLE CO

Printing BROUGH & CASWELL



