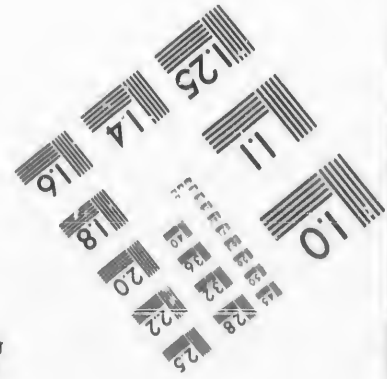
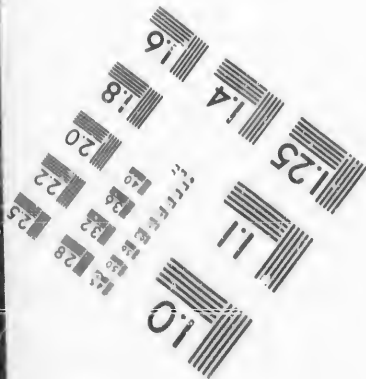
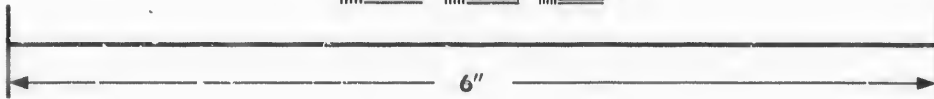
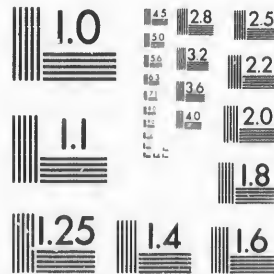


**IMAGE EVALUATION
TEST TARGET (MT-3)**



**Photographic
Sciences
Corporation**

23 WEST MAIN STREET
WEBSTER, N.Y. 14580
(716) 872-4303

**CIHM/ICMH
Microfiche
Series.**

**CIHM/ICMH
Collection de
microfiches.**



Canadian Institute for Historical Microreproductions / Institut canadien de microreproductions historiques

© 1986

Technical and Bibliographic Notes/Notes techniques et bibliographiques

The Institute has attempted to obtain the best original copy available for filming. Features of this copy which may be bibliographically unique, which may alter any of the images in the reproduction, or which may significantly change the usual method of filming, are checked below.

L'Institut a microfilmé le meilleur exemplaire qu'il lui a été possible de se procurer. Les détails de cet exemplaire qui sont peut-être uniques du point de vue bibliographique, qui peuvent modifier une image reproduite, ou qui peuvent exiger une modification dans la méthode normale de filmage sont indiqués ci-dessous.

- Coloured covers/
Couverture de couleur
- Covers damaged/
Couverture endommagée
- Covers restored and/or laminated/
Couverture restaurée et/ou pelliculée
- Cover title missing/
Le titre de couverture manque
- Coloured maps/
Cartes géographiques en couleur
- Coloured ink (i.e. other than blue or black)/
Encre de couleur (i.e. autre que bleue ou noire)
- Coloured plates and/or illustrations/
Planches et/ou illustrations en couleur
- Bound with other material/
Relié avec d'autres documents
- Tight binding may cause shadows or distortion
along interior margin/
La reliure serrée peut causer de l'ombre ou de la
distorsion le long de la marge intérieure
- Blank leaves added during restoration may
appear within the text. Whenever possible, these
have been omitted from filming/
Il se peut que certaines pages blanches ajoutées
lors d'une restauration apparaissent dans le texte,
mais, lorsque cela était possible, ces pages n'ont
pas été filmées.
- Additional comments:/
Commentaires supplémentaires:

- Coloured pages/
Pages de couleur
- Pages damaged/
Pages endommagées
- Pages restored and/or laminated/
Pages restaurées et/ou pelliculées
- Pages discoloured, stained or foxed/
Pages décolorées, tachetées ou piquées
- Pages detached/
Pages détachées
- Showthrough/
Transparence
- Quality of print varies/
Qualité inégale de l'impression
- Includes supplementary material/
Comprend du matériel supplémentaire
- Only edition available/
Seule édition disponible
- Pages wholly or partially obscured by errata
slips, tissues, etc., have been refilmed to
ensure the best possible image/
Les pages totalement ou partiellement
obscurcies par un feuillet d'errata, une pelure,
etc., ont été filmées à nouveau de façon à
obtenir la meilleure image possible.

This item is filmed at the reduction ratio checked below/
Ce document est filmé au taux de réduction indiqué ci-dessous.

| | | | | | |
|--------------------------|--------------------------|-------------------------------------|--------------------------|--------------------------|--------------------------|
| 10X | 14X | 18X | 22X | 26X | 30X |
| <input type="checkbox"/> | <input type="checkbox"/> | <input checked="" type="checkbox"/> | <input type="checkbox"/> | <input type="checkbox"/> | <input type="checkbox"/> |
| 12X | 16X | 20X | 24X | 28X | 32X |

The copy filmed here has been reproduced thanks to the generosity of:

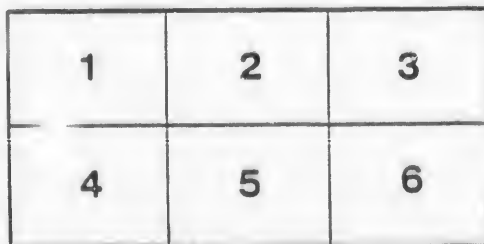
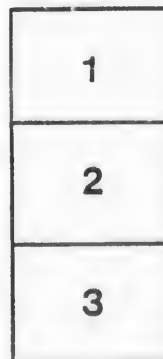
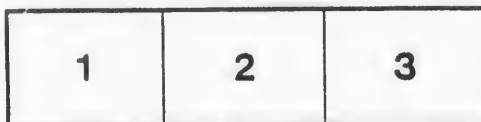
Archives of Ontario
Toronto

The images appearing here are the best quality possible considering the condition and legibility of the original copy and in keeping with the filming contract specifications.

Original copies in printed paper covers are filmed beginning with the front cover and ending on the last page with a printed or illustrated impression, or the back cover when appropriate. All other original copies are filmed beginning on the first page with a printed or illustrated impression, and ending on the last page with a printed or illustrated impression.

The last recorded frame on each microfiche shall contain the symbol \rightarrow (meaning "CONTINUED"), or the symbol ∇ (meaning "END"), whichever applies.

Maps, plates, charts, etc., may be filmed at different reduction ratios. Those too large to be entirely included in one exposure are filmed beginning in the upper left hand corner, left to right and top to bottom, as many frames as required. The following diagrams illustrate the method:



L'exemplaire filmé fut reproduit grâce à la générosité de:

Archives of Ontario
Toronto

Les images suivantes ont été reproduites avec le plus grand soin, compte tenu de la condition et de la netteté de l'exemplaire filmé, et en conformité avec les conditions du contrat de filmage.

Les exemplaires originaux dont la couverture en papier est imprimée sont filmés en commençant par le premier plat et en terminant soit par la dernière page qui comporte une empreinte d'impression ou d'illustration, soit par le second plat, selon le cas. Tous les autres exemplaires originaux sont filmés en commençant par la première page qui comporte une empreinte d'impression ou d'illustration et en terminant par la dernière page qui comporte une telle empreinte.

Un des symboles suivants apparaîtra sur la dernière image de chaque microfiche, selon le cas: le symbole \rightarrow signifie "A SUIVRE", le symbole ∇ signifie "FIN".

Les cartes, planches, tableaux, etc., peuvent être filmés à des taux de réduction différents. Lorsque le document est trop grand pour être reproduit en un seul cliché, il est filmé à partir de l'angle supérieur gauche, de gauche à droite, et de haut en bas, en prenant le nombre d'images nécessaire. Les diagrammes suivants illustrent la méthode.

ails
du
difier
une
page

rata
o
elure,
à



LIST OF VOTERS

FOR THE VILLAGE OF

RICHMOND HILL,

1896.

RICHMOND HILL:

PRINTED AT THE RICHMOND HILL LIBERAL BOOK AND JOB OFFICE.

PART

- 1 Ca
- 2 Ca
- 3 Ca
- 4 Ch
- 5 De

POLL

No.
on
Roll

1
3

7
11
18



VOTERS' LIST, 1896.

MUNICIPALITY OF RICHMOND HILL.

PART I.—LIST OF PERSONS ENTITLED TO VOTE AT BOTH MUNICIPAL ELECTIONS AND ELECTIONS TO THE LEGISLATIVE ASSEMBLY

SCHEDULE OF POST OFFICES:

| | | | |
|------------------|-----------------|------------------|---------------------|
| 1 Caledonia | 6 Eglinton | 11 Mimico | 16 Vellore |
| 2 Carrville | 7 Jefferson | 12 Orillia | 17 Victoria Square |
| 3 Cashel | 8 Lowell, Mass. | 13 Richmond Hill | 18 Toronto Junction |
| 4 Chatham | 9 Maple | 14 Stroud | 19 Woodstock |
| 5 Detroit, Mich. | 10 Midland | 15 Toronto | |

POLLING SUB-DIVISION No. 1.—Comprising the whole Village, being composed of the front parts of Township Lots 45, 47 and 48, Concession 1, of the Townships of Vaughan and Markham.

| No. on Roll | NAME | JURORS | LOT | STREET | FREEHOLDER, TENANT, INCOME, AND MANHOOD FRANCHISE. | Post Office Address |
|-------------|-----------------------|--------|----------|------------------|--|---------------------|
| A | | | | | | |
| 1 | Albin, Albert..... | J | 6 on 46 | Arnold, n s..... | F M F | 13 |
| 3 | Arnold, John R | J | 31 on 43 | Yonge, w s..... | F M F | 13 |
| B | | | | | | |
| 7 | Brownlee, James | J | 32 on 46 | Yonge, w s.... | T M F | 13 |
| 11 | Brown, Oscar J..... | J | 11 on 46 | Yonge, e s..... | F M F | 13 |
| 18 | Blanchard, John | J | 20 on 47 | Church, e s..... | F M F | 13 |

Voters' List, 1896, Municipality of Richmond Hill Village.

PART I.—Polling Sub-Division No. 1.—Continued.

| No. on Roll | NAME | JURORS | LOT | STREET | FREEHOLDER, TENANT, INCOME, AND MANHOOD FRANCHISE. | Post Office Address |
|-------------|------------------------|--------|-------------|------------------|--|---------------------|
| 17 | Blanchard, Henry..... | J | 20 on 47 | Church, e s..... | F M F | 13 |
| 16 | Blanchard, Joseph ... | | 45 on 47 | Church, w s ... | T M F | 13 |
| 19 | Brown, John | J | 24 on 47 | Dufferin | F M F | 13 |
| 13 | Brydon, John | J | 5 on 48 | Yonge, e s..... | F M F | 13 |
| 9 | Baker, John | | 14 on 47 | Elizabeth, e s.. | T M F | 13 |
| C | | | | | | |
| 26 | Crosby, Parker | | 27 on 47 | Yonge, e s..... | F M F | 13 |
| 25 | Crosby, Isaac..... | J | 10 12 on 48 | Yonge, e s..... | T M F | 13 |
| 24 | Coulter, John..... | | 40 on 47 | Yonge, e s..... | F M F | 13 |
| 34 | Chamberlain, Chas. H | J | 35 on 47 | Centre, s s..... | F M F | 13 |
| 27 | Claffey, John..... | J | 9 on 48 | Yonge, e s..... | T M F | 13 |
| 23 | Campbell, Archibald... | J | 4 on 47 | Centre, n s..... | T M F | 13 |
| 36 | Cook, Francis | | 16 on 48 | Mill, n s..... | F M F | 13 |
| 33 | Clifford, Wm | | 9 on 47 | Richmond, n s. | F M F | 13 |
| 32 | Coombs, Arthur | J | 31 on 46 | Vaughan, n s... | T M F | 13 |
| 29 | Casley, John | J | 18 on 47 | Centre, s s..... | F M F | 13 |
| 31 | Coombs, Ernest..... | | 7 on 46 | Yonge, e s..... | I M F | 13 |
| 38 | Coombs, James | J | 50 on 48 | Mill, n s..... | T M F | 13 |
| 39 | Cooper, Charles..... | J | 32 33 on 47 | Richmond, n s. | T M F | 13 |
| D | | | | | | |
| 40 | Dillon, Michael..... | | 7 on 48 | Yonge, e s... . | T M F | 13 |
| 44 | Durham, Richard..... | | 54 on 47 | Centre, s s..... | F M F | 13 |
| 45 | Dolan, James | | 16 on 46 | Arnold, n s .. | T M F | 13 |

Vote

No. on Roll

48
49
50
54

52
54

61
62
60
67
65
72
59
69
71
56
63
66
70
74

Village.

Voters' List, 1896, Municipality of Richmond Hill Village.

PART I.—Polling Sub-Division No. 1.—Continued.

| No. on Roll | NAME | JURORS | LOT | STREET | FREEHOLDER, TENANT, INCOME, AND MANHOOD FRANCHISE. | Post Office Address |
|-------------|--------------------------|------------------|-------------|------------------|--|---------------------|
| | E | | | | | |
| 13 | | | | | | |
| 13 | | | | | | |
| 13 | 48 Elliott, John W..... | J 13 on 47 | | Richmond, s s. | T M F | 13 |
| 13 | 49 Eyer, David..... | J 40 on 48 | | Yonge, w s..... | F M F | 13 |
| 13 | 50 Empringham, John ... | J 44 on 48 | | Mill, n s..... | F M F | 13 |
| 13 | 46 Ellston, John..... | J 9 on 46 | | Yonge, e s..... | F M F | 13 |
| | F | | | | | |
| 13 | | | | | | |
| 13 | | | | | | |
| 13 | 52 Freck, James..... | | 18 on 47 | Richmond, n s. | F M F | 13 |
| 13 | 54 Furey, William..... | J 11 on 48 | | Trench, e s .. | F M F | 13 |
| 13 | | | | | | |
| 13 | | | | | | |
| 13 | | | | | | |
| 13 | | | | | | |
| 13 | | | | | | |
| 13 | | | | | | |
| 13 | | | | | | |
| | G | | | | | |
| 13 | 61 Griffith, Henry..... | | 3 on 46 | Yonge, e s..... | T M F | 13 |
| 13 | 62 Glass, William | J 36 on 46 | | Yonge, w s..... | T M F | 13 |
| 13 | 60 Grant, Jesse | | 8 on 47 | Yonge, w s..... | F M F | 13 |
| 13 | 67 Gaby, Levi..... | J 24 26 on 47 | | Richmond, n s. | F M F | 13 |
| 13 | 65 Gray, David | | 5 on 46 | Yonge, e s..... | F M F | 13 |
| 13 | 72 Garbutt, Robert | J 11 17 on 48 | | Lucas, w s..... | F M F | 13 |
| 13 | 59 Gould, William J. . . | J 36 on 47 | | Yonge, w s..... | T M F | 13 |
| 13 | 69 Good, Jesse | J 56 to 57 on 48 | | Mill, n s..... | F M F | 13 |
| 13 | 71 Glover, George | J 1 to 5 on 48 | | Lucas, e s..... | F M F | 13 |
| 13 | 56 Glover, Edward..... | J 37 on 47 | | Yonge, e s..... | T M F | 13 |
| 13 | 63 Glass, John | J 50 on 47 | | Centre E, s s. . | T M F | 13 |
| 13 | 66 Grant, Rev. James A | | 32 on 46 | Yonge, w s..... | T M F | 13 |
| 13 | 70 Good, John..... | | 56-57 on 48 | Mill, n s..... | F M F | 13 |
| 13 | 74 Garvin, Fred W | | 13 on 47 | Centre, n s..... | T M F | 13 |

Voters' List, 1896, Municipality of Richmond Hill Village.

Vot

PART I.—Polling Sub-Division No. 1.—Continued.

| No. on Roll | NAME | JURORS | LOT | STREET | FREEHOLDER, TENANT, INCOME, AND MANHOOD FRANCHISE. | Post Office Address | No. on Roll |
|-------------|------------------------|--------|-------------|------------------|--|---------------------|--|
| H | | | | | | | |
| 88 | Hall, Joseph | J | 19-20 on 47 | Yonge, w s..... | F M F | 13 | 112 |
| 76 | Hume, A J. | J | 38 on 47 | Yonge, e s..... | T M F | 13 | 109 |
| 82 | Hutchinson, John.... | | 27 on 48 | Yonge, e s..... | F M F | 13 | 115 |
| 91 | Harrison, William ... | J | 7 on 47 | Yonge, w s..... | F M F | 13 | 107 |
| 93 | Hicks, Thomas | | 9 on 47 | Centre, n s..... | F M F | 13 | 113 |
| 77 | Hart, John..... | | 36 on 47 | Yonge, e s..... | F M F | 13 | 114 |
| 75 | Hewison, Warren..... | J | 6 on 46 | Yonge, e s..... | T M F | 13 | 106 |
| 78 | Hopper, Henry F..... | J | 34 on 47 | Yonge, e s..... | F M F | 13 | |
| 85 | Harris, John | | 33 on 48 | Yonge, w s..... | F M F | 13 | |
| 83 | Hopper, Thomas | J | 1 on 48 | Yonge, e s..... | T M F | 13 | |
| 89 | Hall, Wellington F ... | J | 19 20 on 47 | Yonge, w s..... | F M F | 13 | |
| 80 | Hill, David | | 29 on 48 | Yonge, e s..... | F M F | 13 | |
| 79 | Hopper, Herbert | | 45 on 47 | Church, w s... | T M F | 13 | |
| 92 | Hutchison, Dr. J. N. | | 38 on 48 | Yonge, w s..... | T M F | 13 | |
| I | | | | | | | |
| 96 | Innes, Leslie | | 33 on 47 | Richmond, s s. | F M F | 13 | |
| 95 | Innes, William | J | 8 on 47 | Richmond, n s. | F M F | 13 | |
| 97 | Innes, John | | 21 on 47 | Richmond, n s. | F M F | 13 | |
| K | | | | | | | |
| 99 | Kelly, John | J | 35 36 on 46 | Yonge, w s..... | T M F | 13 | 121 |
| 102 | Kennerley, John..... | | 32 on 46 | Yonge, w s..... | F M F | 13 | 127 |
| 104 | Kiunee, Robert..... | | 7 on 46 | Arnold, n s ... | T M F | 13 | 119 132 122 123 124 125 131 130 |

Village.

Voters' List, 1896, Municipality of Richmond Hill Village.

PART I.—Polling Sub-Division No. 1.—Continued.

| Post Office Address | No. on Roll | NAME | JURORS | LOT | STREET | FREEHOLDER, TENANT, INCOME, AND MANHOOD FRANCHISE. | Post Office Address |
|---------------------|-------------|------------------------|--------|-------------|-----------------|--|---------------------|
| | | L | | | | | |
| 13 | 112 | Lawrence, James M... | | 21 on 47 | Yonge, w s..... | F M F | 13 |
| 13 | 109 | Langstaff, Rolph | | 29-38 on 48 | Yonge, w s..... | T M F | 13 |
| 13 | 115 | Lyons, Benjamin | | 19 on 47 | Mill, s s..... | F M F | 13 |
| 13 | 107 | Law, Robert E | | 37 on 47 | Yonge, e s..... | F M F | 13 |
| 13 | 113 | Lewis, Richard..... | J | 34 on 47 | Richmond, s s. | T M F | 13 |
| 13 | 114 | Lyons, Cyrus..... | J | 12 on 47 | Richmond, n s. | T M F | 13 |
| 13 | 106 | Lillie, Philip | | 25 on 47 | Centre W, s s. | T M F | 13 |
| 13 | | | | | | | |
| 13 | | | | | | | |
| 13 | | | | | | | |
| 13 | | | | | | | |
| 13 | | | | | | | |
| 13 | | | | | | | |
| 13 | | | | | | | |
| | | M | | | | | |
| | 121 | Mason, Charles | J | 48 on 47 | Yonge, e s..... | F M F | 13 |
| | 128 | Mortson, William J... | | 14-15 on 47 | Mill, s s | F M F | 13 |
| | 127 | Mortson, Jeremiah .. | J | 31 on 47 | Richmond, s s. | F M F | 13 |
| | 119 | Moodie, Alexander ... | | 12 on 46 | Yonge, e s..... | F M F | 13 |
| | 132 | Mahoney, James | J | 52 on 48 | Mill..... | F M F | 13 |
| | 122 | Mason, William | | 10 on 47 | Richmond, s s. | F M F | 13 |
| | 123 | Mason, England | | 10 on 47 | Richmond, s s. | F M F | 13 |
| | 124 | Miller, Henry | | 23 on 47 | Yonge, e s..... | F M F | 13 |
| 13 | 125 | Mintern, Walton | J | 1 on 47 | Yonge, w s..... | F M F | 13 |
| 13 | 131 | Murphy, Michael..... | J | 51 on 48 | Yonge, e s..... | T M F | 13 |
| 13 | 130 | Metcalf, Thomas | | 8 on 47 | Richmond, n s. | F M F | 13 |

Voters' List, 1896, Municipality of Richmond Hill Village.

PART I.--Polling Sub-Division No. 1.--Continued.

| No. on Roll | NAME | JURORS | LOT | STREET | FREEHOLDER, TENANT, INCOME, AND MANHOOD FRANCHISE. | Post Office Address |
|------------------|------------------------|--------|-------------|------------------|--|---------------------|
| <i>Mc</i> | | | | | | |
| 139 | McDonald, George A. | J | 15 on 47 | Centre, s s..... | F M F | 13 |
| 136 | McMahon, Thomas F | J | 8 on 46 | Yonge, e s..... | F M F | 13 |
| 142 | McConaghy, Francis, sr | J | 32 on 46 | Yonge, w s..... | F M F | 13 |
| 140 | McKenzie, David..... | J | 32 on 46 | Yonge, w s..... | T M F | 13 |
| 135 | McCleary, Robert B... | | 53 on 48 | Woods Lane... | F M F | 13 |
| 137 | McNair, Matthew.... | | 40 on 48 | Yonge, w s..... | F M F | 13 |
| 148 | McKinnon, John A... | | 17 on 47 | Centre, s s..... | T M F | 13 |
| 146 | McKenzie, James..... | | 15 on 46 | Arnold, n s .. | F M F | 13 |
| 147 | McDonald, Benjamin | | 29 on 47 | Elizabeth, w s | F M F | 13 |
| 143 | McConaghy, Charles J | J | 32 on 46 | Yonge, w s..... | F M F | 13 |
| <i>N</i> | | | | | | |
| 152 | Nicholls, Hesse A..... | J | 4 on 46 | Yonge, e s..... | F M F | 13 |
| 149 | Newton, Andrew | J | 32 on 48 | Yonge, w s..... | F M F | 13 |
| 150 | Newbery, Henry | J | 3 on 46 | Arnold, n s ... | F M F | 13 |
| <i>P</i> | | | | | | |
| 167 | Piper, James | | 26 on 47 | Centre, s s..... | T M F | 13 |
| 164 | Peterman, Samuel..... | | 7 on 47 | Richmond, n s. | T M F | 13 |
| 174 | Proctor, William R .. | | 1-2 on 46 | Arnold, n s ... | F M F | 13 |
| 168 | Palmer, John..... | J | 6 on 46 | Yonge, e s..... | F M F | 13 |
| 169 | Palmer, Walter V..... | J | 19 21 on 47 | Centre, n s..... | F M F | 13 |

Vote
No. on Roll
166 P
170 P
160 P
162 P
161 P
155 P
156 P
159 P

181 P
183 P
185 P
182 P

202
198
197
206
196
208
200
191
264

ill Village.

Voters' List, 1896, Municipality of Richmond Hill Village.

ued.

PART I.--Polling Sub-Division No. 1.--Continued.

| | Post Office Address | No. on Roll | NAME | JURORS | LOT | STREET | FREEHOLDER, TENANT, INCOME, AND MANHOOD FRANCHISE. | Post Office Address |
|-----|---------------------|-------------|------------------------|--------|----------|------------------|--|---------------------|
| M F | 13 | 166 | Phillips, Henry | | 4 on 46 | Arnold, n s.... | F M F | 13 |
| M F | 13 | 167 | Pugaley, William H... | J | 36 on 46 | Arnold, n s.... | F M F | 13 |
| M F | 13 | 160 | Powell, Joseph | | 25 on 47 | Church, e s ... | F M F | 13 |
| M F | 13 | 162 | Powell, Joseph B | | 25 on 47 | Church, e s.... | F M F | 13 |
| M F | 13 | 161 | Powell, John | J | 25 on 47 | Church, e s... | F M F | 13 |
| M F | 13 | 155 | Powell, Alfred | J | 7 on 46 | Yonge, e s.... | F M F | 15 |
| M F | 13 | 156 | Palmer, William | J | 31 on 47 | Yonge, e s.... | T M F | 13 |
| M F | 13 | 159 | Powell, Thomas A.... | | 25 on 47 | Church, w s .. | T M F | 13 |
| M F | 13 | | | | | | | |
| M F | 13 | | | | | | | |
| M F | 13 | | | | | | | |
| M F | 13 | | | | | | | |
| M F | 13 | | | | | | | |
| | | | R | | | | | |
| | | 181 | Ransom, Moses..... | | 3 on 47 | Centre, n s..... | T M F | 13 |
| | | 183 | Riley, Thomas | | 36 on 46 | Arnold, n s ... | T M F | 13 |
| | | 185 | Robinson, George..... | J | 2 on 48 | Yonge, e s.... | T M F | 13 |
| | | 182 | Rollin, Charles | J | 16 on 47 | Trench, w s ... | F M F | 13 |
| M F | 13 | | | | | | | |
| M F | 13 | | | | | | | |
| M F | 13 | | | | | | | |
| | | | S | | | | | |
| | | 202 | Savage, Peter G | J | 6 on 47 | Yonge, w s.... | F M F | 13 |
| | | 198 | Sanderson, John H ... | J | 45 on 47 | Yonge, e s.... | F M F | 13 |
| | | 197 | Sanderson, William A. | | 45 on 47 | Yonge, e s.... | F M F | 13 |
| | | 206 | Sheppard, Charles E.. | | 52 on 47 | Church, e s ... | T M F | 13 |
| M F | 13 | 196 | Siver, Robert..... | J | 49 on 47 | Yonge, e s.... | T M F | 13 |
| M F | 13 | 208 | Sheppard, William ... | J | 52 on 47 | Church, e s .. | T M F | 13 |
| M F | 13 | 200 | Slaney, Nicholas | J | 6 on 48 | Yonge, e s.... | F M F | 13 |
| M F | 13 | 191 | Storey, William T..... | J | 32 on 46 | Yonge, w s.... | F M F | 13 |
| M F | 13 | 204 | Savage, William | | 6 on 47 | Yonge, w s..... | F M F | 13 |

Voters' List, 1896, Municipality of Richmond Hill Village.

PART I.--Polling Sub-Division No. 1.--Continued.

| No. on Roll | NAME | JUNORS | LOT | STREET | FREEHOLDER, TENANT, INCOME, AND MANHOOD FRANCHISE. | Post Office Address |
|-------------|---------------------------|--------|-------------|------------------|--|---------------------|
| 192 | Sheele, A. L | | 50 on 47 | Yonge, e s..... | F M F | 13 |
| 193 | Skeele, Clarence | J | 50 on 47 | Yonge, e s..... | F M F | 13 |
| 201 | Startup, John | J | 39 on 47 | Wright, n s.... | F M F | 13 |
| 188 | Smith, Robert | J | 24 on 48 | Yonge, w s..... | T M F | 13 |
| 207 | Sims, George | | 44 on 48 | Mill, n s..... | F M F | 13 |
| 205 | Switzer, J. A. E | J | 22 on 47 | Yonge, w s..... | F M F | 13 |
| 199 | Sanderson, James Mc | J | 47 on 47 | Yonge, e s..... | F M F | 13 |
| 211 | Shunk, Solomon | | 48 on 48 | Mill, n s..... | T M F | 13 |
| T | | | | | | |
| 218 | Teel, William..... | | 43 on 47 | Richmond, s s. | F M F | 13 |
| 220 | Teefy, Matthew..... | | 34 on 46 | Yonge, w s..... | F M F | 13 |
| 219 | Tyrell, Thomas | J | 30 on 47 | Yonge, e s..... | T M F | 13 |
| 215 | Trench, Thomas | J | 10 on 46 | Yonge, o s..... | F M F | 13 |
| V | | | | | | |
| 221 | Vickery, Rev. John... | | 23-24 on 47 | Centre, n s..... | T M F | 13 |

| No. on Roll | Vote |
|-------------|------|
| 227 | V |
| 228 | V |
| 222 | V |
| 223 | V |
| 225 | V |
| 229 | V |

illage.

Voters' List, 1896, Municipality of Richmond Hill Village.

PART I.—Polling Sub-Division No. 1.—Continued.

| No. on Roll | NAME | JURORS | LOT | STREET | FREEHOLDER, TENANT, INCOME, AND MANHOOD FRANCHISE. | Post Office Address |
|-------------|-----------------------|--------|----------|------------------|--|---------------------|
| | W | | | | | |
| 227 | Walker, Robert..... | J | 5 on 47 | Centre, n s.... | T M F | 13 |
| 228 | Wiley, Gerrard..... | | 13 on 47 | Elizabeth, e s.. | T M F | 13 |
| 222 | Wiley, Walter E..... | | 11 on 46 | Church, w s ... | T M F | 13 |
| 223 | Wright, William A .. | J | 30 on 48 | Yonge, w s.... | F M F | 13 |
| 225 | Wiley, Francis | | 5 on 46 | Arnold, n s ... | F M F | 13 |
| 229 | Walder, Isaac | J | 17 on 47 | Mill, s s..... | T M F | 13 |

13
13
13
13
13
13
13

13
13
13
13

Voters' List, 1896, Municipality of Richmond Hill Village.

PART II.—LIST OF PERSONS ENTITLED TO VOTE AT MUNICIPAL ELECTIONS ONLY.

PART 2.—Polling Sub-Division No. 1.—Continued.

| No. on Roll | NAME | JURORS | LOT | STREET | OWNER OR TENANT | Post Office Address |
|-------------|-------------------------|--------|-------------|-------------------|-----------------|---------------------|
| A | | | | | | |
| 208 | Ambler, William | | 23 on 48 | Yonge, w s. | Owner | 14 |
| 4 | Atkinson, Mrs. W. D. | | 11 on 46 | Church, w s. . . | Tenant | 13 |
| B | | | | | | |
| 8 | Barker, Mrs. Matilda. | | 14 on 47 | Centre, s s. | Owner | 13 |
| 5 | Bricknell, William ... | | 15 on 47 | Centre, s s. | Owner | 15 |
| 6 | Barnes, Thomas..... | | 20 on 47 | Richmond, n s. | Owner | 18 |
| C | | | | | | |
| 188 | Cook, William | | 24 27 on 48 | Yonge, w s. | Owner | 15 |
| 188 | Cook, John J..... | | 24 27 on 48 | Yonge, w s. | Owner | 15 |
| 229 | Cosgrove, Francis.... | | 17 on 47 | Mill, s s. | Owner | 7 |
| 36 | Cassidy, Mrs Minnie R | | 3 on 48 | Yonge, e s. | Owner | 15 |
| 22 | Carr, Mrs. Anne | | 1 on 46 | Yonge, e s. | Owner | 13 |
| D | | | | | | |
| | N R Drummond, Mrs. H. A | | 3 4 on 47 | Centre, E | Owner | 11 |

Vote

No. on Roll

55
51

68
114

180
94

98

illage.

Voters' List, 1896, Municipality of Richmond Hill Village.

PART 2.—Polling Sub-Division No. 1.—Continued.

| No. on Roll | NAME | JURORS | LOT | STREET | OWNER OR TENANT | Post Office Address |
|-------------|------------------------|--------|-------------|-----------------|-----------------|---------------------|
| F | | | | | | |
| 55 | Falconbridge, Mrs. J K | | 23 on 47 | Yonge, w s..... | Owner | 15 |
| 51 | Falconer, Mrs. Barbara | | 28 on 48 | Yonge, e s..... | Owner | 13 |
| G | | | | | | |
| 68 | Gaby, Mrs. Eliza | | 28 on 47 | Richmond, n s. | Owner | 13 |
| 114 | Graham, Mrs. R | | 12 on 47 | Richmond, n s. | Owner | 15 |
| H | | | | | | |
| 180 | Haffey, Bernard | | 17-18 on 46 | Arnold, n s ... | Owner | 19 |
| 94 | Hennessey, Mrs. Jas.. | | 6-10 on 48 | Mill, n s. | Owner | 13 |
| J | | | | | | |
| 98 | Jenkins, Mrs. Lizette. | | 13 on 46 | Yonge, e s..... | Owner | 13 |

Post Office Address

14
13

13
15
18

15
15
7
15
13

11

Voters' List, 1896, Municipality of Richmond Hill Village.

PART 2.--Polling Sub-Division No. 1.--Continued.

| No. on Roll | NAME | JURORS | LOT | STREET | OWNER OR TENANT | Post Office Address |
|-------------|------------------------|--------|-------------|------------------|-----------------|---------------------|
| K | | | | | | |
| 105 | Kendrick, Edward ... | | 8 on 46 | Arnold, n s ... | Owner | 15 |
| L | | | | | | |
| 23 | Lafferty, A. M | | 4 on 47 | Centre, n s..... | Owner | 4 |
| 111 | Law, Mrs. Elizabeth... | | 26 34 on 47 | Yonge, w s..... | Owner | 13 |
| 110 | Langstaff, Mrs. Louisa | | 38 on 48 | Yonge, w s..... | Tenant | 13 |
| M | | | | | | |
| 78 | Moylan, Patrick | | 44 on 47 | Richmond, s s | Owner | 15 |
| 118 | Maxwell, Mary..... | | 3 on 46 | Yonge, e s..... | Tenant | 13 |
| 126 | Murphy, William..... | | 7 on 48 | Yonge, e s..... | Owner | 16 |
| Mc | | | | | | |
| 145 | McLaughlin, Alex'r... | | 11-12 on 46 | Arnold, n s ... | Owner | 19 |
| 211 | McNair, Robert | | 47 on 48 | Mill, n s..... | Owner | 13 |
| 144 | McConaghy, Hugh .. | | 32 on 46 | Yonge, w s..... | Owner | 10 |

Vote

No. on Roll

153
151

154

157
171
172
173

113

164
175
180

lage.

Voters' List, 1896, Municipality of Richmond Hill Village.

PART 2.—Polling Sub-Division No. 1.—Continued.

| Post Office Address | No. on Roll | NAME. | JURORS | LOT | STREET | OWNER OR TENANT | Post Office Address |
|---------------------|-------------|------------------------|--------|-------------|------------------|-----------------|---------------------|
| | | N | | | | | |
| 15 | 153 | Nicholls, Mrs. Lucy... | | 2 on 46 | Yonge, e s. | Owner | 13 |
| | 151 | Newton, James | | 5 on 47 | Centre, n s .. | Owner | 13 |
| | | O | | | | | |
| | 154 | O'Brien, Mrs. Isabella | | 45 on 47 | Richmond, s s. | Owner | 13 |
| 4 | | P | | | | | |
| 13 | 157 | Peach, Thomas | | 28 on 48 | Yonge, w s. | Owner | 17 |
| 13 | 171 | Pugsley, David..... | | 32 on 47 | Yonge, e s. | Owner | 6 |
| | 172 | Pugsley, Arthur | | 32 on 47 | Yonge, e s. | Owner | 6 |
| | 173 | Pugsley, Frederick .. | | 32 on 47 | Yonge, e s. | Owner | 6 |
| | | Q | | | | | |
| | 113 | Quantz, Mrs. M. | | 36 on 47 | Richmond, s s. | Owner | 3 |
| | | R | | | | | |
| 19 | 164 | Reaman, D. S. | | 7 on 47 | Richmond, n s | Owner | 2 |
| 13 | 175 | Redditt, Mrs. Benj ... | | 30 on 47 | Richmond, s s. | Owner | 13 |
| 10 | 180 | Ross, Mary | | 17 18 on 46 | Arnold, n s ... | Tenant | 13 |

Voters' List, 1896, Municipality of Richmond Hill Village.

PART 2.--Polling Sub-Division No. 1.--Continued.

| No. on Roll | NAME | JURORS | LOT | STREET | OWNER OR TENANT | Post Office Address |
|-------------|-------------------------|--------|-------------|-------------------|-----------------|---------------------|
| S | | | | | | |
| 194 | Skeele, James E | | 31 on 48 | Yonge, e s. | Owner | 1 |
| 196 | Siver, Mrs. Emma ... | | 49 on 47 | Yonge, e s. | Owner | 13 |
| 209 | Stockdale, Mrs. Eliza'h | | 32-33 on 47 | Richmond, n s. | Owner | 13 |
| 174 | Storey, John | | 49 51 on 47 | Richmond, s s. | Owner | 8 |
| 195 | Skeele, Wilbur | | 50 on 47 | Yonge, e s. | Owner | 13 |
| 203 | Savage, Albert S | | 6 on 47 | Yonge, w s. | Owner | 15 |
| 213 | Sheardown, John | | 35 on 47 | Centre W, s s. | Owner | 9 |
| 210 | Storey, Mrs. Margaret | | 12 on 47 | Richmond, s s. | Owner | 13 |
| T | | | | | | |
| 214 | Trench, Mrs. Wm. | | 10 on 46 | Yonge, e s. | Owner | 13 |
| W | | | | | | |
| 230 | Woods, John. | | 59 on 48 | Mill, n s. | Owner | 13 |
| 227 | Welch, Mrs. Miranda. | | 5 on 47 | Centre, n s. | Owner | 5 |
| 226 | Wiley, William E. | | 5 on 46 | Arnold, n s ... | Owner | 15 |

Voter
P

No.
on
Roll

2 A

12
21
20
14
15
10

28
30
37

lage.

Voters' List, 1896, Municipality of Richmond Hill Village.

PART III.—LIST OF PERSONS ENTITLED TO VOTE AT ELECTIONS TO THE LEGISLATIVE ASSEMBLY ONLY.

PART 3.—Polling Sub-Division No. 1.—Continued.

| Post Office Address | No. on Roll | NAME | JURORS | LOT | STREET | THE MANHOOD SUFFRAGE ACT. | Post Office Address |
|---------------------|-------------|-------------------------|--------|----------|------------------|---------------------------|---------------------|
| | | A | | | | | |
| | 2 | Albin, Albert, jr | | 6 on 46 | Arnold, n s ... | M F | 13 |
| 1 | | | | | | | |
| 13 | | | | | | | |
| 13 | | | | | | | |
| 8 | | | | | | | |
| 13 | | | | | | | |
| 15 | | | | | | | |
| 9 | | | | | | | |
| 13 | | | | | | | |
| | | B | | | | | |
| | 12 | Bird, Charles..... | | 29 on 48 | Yonge, e s..... | M F | 13 |
| 13 | 21 | Beuson, Elvis..... | | 5 on 47 | Centre, n s..... | M F | 13 |
| | 20 | Benson, David | | 5 on 47 | Centre, n s..... | M F | 13 |
| | 14 | Billings, Charles C .. | | 48 on 47 | Church, w s ... | M F | 13 |
| | 15 | Brown, William E ... | | 7 on 46 | Yonge, e s..... | M F | 13 |
| | 10 | Boyle, David..... | | 50 on 47 | Church, w s ... | M F | 13 |
| | | C | | | | | |
| | 28 | Cooper, William | | 36 on 48 | Yonge, w s..... | M F | 13 |
| | 30 | Campbell, James | | 35 on 46 | Yonge, w s.... | M F | 13 |
| | 37 | Celbran, James..... | | 34 on 47 | Richmond, n s. | M F | 13 |
| 13 | | | | | | | |
| 5 | | | | | | | |
| 15 | | | | | | | |

Voters' List, 1896, Municipality of Richmond Hill Village.

PART 3.—Polling Sub-Division No. 1.—Continued.

| No. on Roll | NAME | JURORS | LOT | STREET | THE MANHOOD SUFFRAGE ACT. | Post Office Address |
|-------------------|-------------------------|--------|-------------|-----------------|---------------------------------|------------------------|
| D | | | | | | |
| 42 | Douthwaite, Thomas. | | 13 on 46 | Yonge, e s | M F | 13 |
| 43 | Douthwaite, William. | | 15 on 46 | Yonge, e s..... | M F | 13 |
| 41 | Derry, George | | 45 on 47 | Yonge, e s..... | M F | 13 |
| E | | | | | | |
| 47 | Ellston, John, jr | | 9 on 46 | Yonge, e s..... | M F | 13 |
| F | | | | | | |
| 53 | Freek, Thomas | | 18 on 47 | Richmond, n s | M F | 13 |
| G | | | | | | |
| 64 | Glass, Reuben | | 36 on 46 | Yonge, w s..... | M F | 13 |
| 57 | Grainger, Fred | | 34 on 47 | Yonge, e s..... | M F | 13 |
| 58 | Glover, George | | 37 on 47 | Yonge, e s..... | M F | 13 |
| 73 | Garbutt, Edward | | 11 17 on 48 | Lucas | M F | 13 |

Vo

No.
on
Roll

84
86
81
87
90

103
101
160

116
108
117

llage.

Voters' List, 1896, Municipality of Richmond Hill Village.

PART 3.--Polling Sub-Division No. 1.--Continued.

| No. on Roll | NAME | JURORS | LOT | STREET | THE MANHOOD SUFFRAGE ACT | Post Office Address |
|-------------|----------------------------|--------|-------------|-----------------|--------------------------|---------------------|
| H | | | | | | |
| 13 | 84 Hopper, George..... | | 1 on 48 | Yonge, e s..... | M F | 13 |
| 13 | 86 Hoover, Isaac | | 29 on 48 | Yonge, w s..... | M F | 13 |
| 13 | 81 Hill, James | | 32 on 47 | Yonge, e s..... | M F | 13 |
| | 87 Hoover, Levi..... | | 29 on 48 | Yonge, w s..... | M F | 13 |
| | 90 Hall, Walker..... | | 19 20 on 47 | Yonge, w s..... | M F | 13 |
| K | | | | | | |
| 13 | 103 Kirklington, Alex'r .. | | 32 on 46 | Yonge, w s..... | M F | 13 |
| | 101 Kirkpatrick, Frank ... | | 7 on 46 | Yonge, e s..... | M F | 13 |
| | 160 Kelly, Patrick | | 35-36 on 46 | Yonge, w s..... | M F | 13 |
| L | | | | | | |
| 13 | 116 Lyons, Thomas | | 19 on 47 | Mill, s s..... | M F | 13 |
| 13 | 108 Law, Elmer E | | 37 on 47 | Yonge, e s..... | M F | 13 |
| 13 | 117 Lyons, Peter | | 19 on 47 | Mill, s s..... | M F | 13 |

Voters' List, 1896, Municipality of Richmond Hill Village.

PART 3.--Polling Sub-Division No. 1.--Continued.

| No. on Roll | NAME | Jurors | LOT | STREET | THE MANHOOD SUFFRAGE ACT. | Post Office Address |
|-------------|------------------------|--------|----------|------------------|---------------------------|---------------------|
| M | | | | | | |
| 134 | Mapes, Joseph | | 5 on 47 | Centre, n s..... | M F | 13 |
| 129 | Morrison, Charles..... | | 42 on 47 | Richmond, s s. | M F | 13 |
| 133 | Murphy, Edward | | 5 on 48 | Yonge, e s..... | M F | 13 |
| 120 | Moodie, Robert | | 12 on 46 | Yonge, e s..... | M F | 13 |
| Mc | | | | | | |
| 141 | McKenzie, William ... | | 32 on 46 | Yonge, w s..... | M F | 13 |
| 138 | McElroy, John T | | 37 on 47 | Yonge, w s..... | M F | 13 |
| P | | | | | | |
| 165 | Powell, Robert | | 35 on 47 | Richmond, n s. | M F | 13 |
| 158 | Powell, Rev. G. A .. | | 8 on 47 | Yonge, w s..... | M F | 13 |
| 163 | Powell, William | | 25 on 47 | Church, e s..... | M F | 13 |

Vote

No. on Roll

179
178
177
176
184
137

189
212
190

ge.

Voters' List, 1896, Municipality of Richmond Hill Village.

PART 3.--Polling Sub-Division No. 1.--Continued.

| Post Office Address | No. on Roll | NAME | JURORS | LOT | STREET | THE MANHOOD SUFFRAGE ACT | Post Office Address |
|------------------------|-------------------|-----------------------|--------|----------|------------------|--------------------------------|------------------------|
| | | R | | | | | |
| 13 | 179 | Robinson, Frank | | 31 on 48 | Yonge, w s..... | M F | 13 |
| 13 | 178 | Robinson, David | | 31 on 48 | Yonge, w s..... | M F | 13 |
| 13 | 177 | Ruben, David | | 3 on 48 | Yonge, e s..... | M F | 13 |
| 13 | 176 | Redditt, Ernest..... | | 30 on 47 | Richmond, s s. | M F | 13 |
| | 184 | Readman, John..... | | 49 on 47 | Richmond, s s. | M F | 13 |
| | 137 | Robinson, Byron | | 23 on 47 | Richmond, n s. | M F | 13 |
| | | | | | | | |
| | | S | | | | | |
| 13 | 189 | Sims, Frank | | 6 on 46 | Yonge, e s..... | M F | 13 |
| 13 | 212 | Smith, George | | 14 on 46 | Church, e s..... | M F | 13 |
| 13 | 190 | Shierk, Albert | | 6 on 46 | Yonge, e s..... | M F | 13 |

Voters' List, 1896, Municipality of Richmond Hill Village.

PART 3.--Polling Sub-Division No. 1.--Continued.

| No. on Roll | NAME | JURORS | LOT | STREET | THE MANHOOD SUFFRAGE ACT. | Post Office Address |
|-------------------|-----------------------|--------|----------|-----------------|---------------------------------|------------------------|
| T | | | | | | |
| 216 | Trench, Wye | | 10 on 46 | Yonge, e s..... | M F | 13 |
| 219 | Tiffin, Arthur..... | | 3 on 48 | Yonge, e s..... | M F | 13 |
| W | | | | | | |
| 224 | Wright, James A | | 30 on 48 | Yonge, w s..... | M F | 13 |

I
Richm
three
appea
entitl
parts
ing b
Muni
and i
proce

Date

quali

Post Office
Address

13
13

13

CLERK'S CERTIFICATE.

(In accordance with Section 3 of "The Voters' List Act, 1899.")

I, MATTHEW TEEFY, Clerk of the Municipality of the Village of Richmond Hill, in the County of York, do hereby certify that parts one and three of the within list constitute a correct list for the year 1896 of all persons appearing by the last Revised Assessment Roll of the said Municipality to be entitled to vote at elections for members of the Legislative Assembly, and that parts one and two constitute a correct list for said year of all persons appearing by the said roll to be entitled to vote at Municipal elections in the said Municipality; and I hereby call upon all the electors to examine the said list, and if any omissions or other errors are perceived therein, to take immediate proceedings to have the said errors corrected according to law.

Dated this 22nd day of July, 1896.

M. TEEFY,
Clerk of Richmond Hill Village.

The aggregate number of names of persons upon the within Voters' List qualified to serve on Juries is seventy-four.

M. TEEFY, Clerk.

