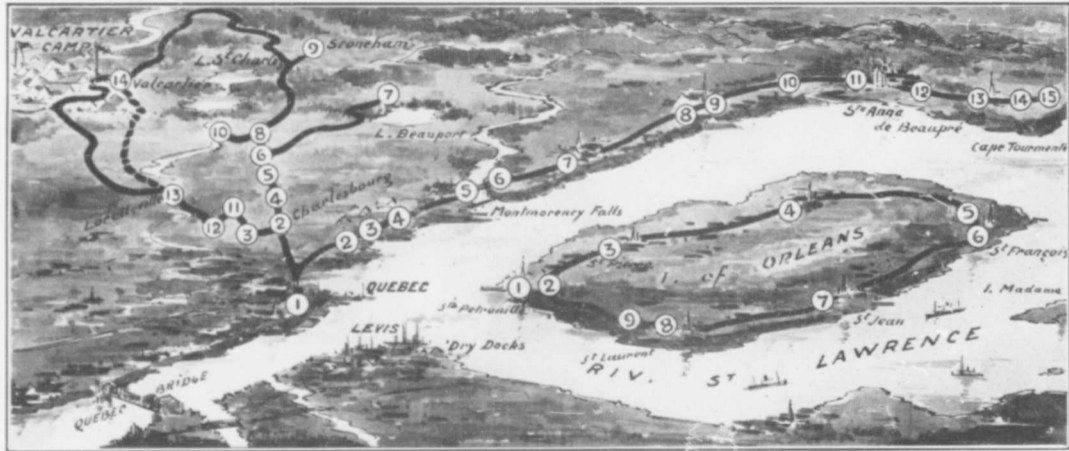


PUBLISHED BY

CHATEAU FRONTENAC GARAGE
QUEBEC - PRICE: 50 CB

FC 2907
H 87
1917



QUEBEC TO VALCARTIER



INTRODUCTION



LD Quebec has always been, and always will be a great attraction for tourists and travellers from all over the Dominion and the States, for the simple reason that it stands unique amongst other cities its quaint old structures, historic interest, and its stately picturesque appearance generally that proves genuine pleasure and a delight for the stranger.

The many pleasant trips around and about the city together with the excellent roads make it especially attractive for motorists, and it may be mentioned here that the Provincial Government has since 1912 spent approximately twenty million dollars and constructed no less than twelve hundred miles of macadamized roads. So it will easily be seen that nothing has been spared to make Quebec as attractive as possible to the Autoists.

Details of the Tours to places of interest will be found on another page, and the motorists or tourist who comes to Quebec will find roads, sights, and interest, not to be equalled in any other city in the Dominion.

This little booklet contains distinct maps of the surrounding district and many delightful trips, to be easily found. The maps and the routes have been carefully drawn up by Mr. J. O'Brien owner of the Chateau Frontenac Garage, and are all strictly accurate and plain. Any further information required, will be willingly given by telephoning him at 5025 or 4116.

QUEBEC TO VALCARTIER

FIFTY MILES AUTO TRIP, leaving Chateau Frontenac for Stoneham, Valcartier, Lorette, returning to Chateau Frontenac.

- (1) From Chateau Frontenac via following streets, Du Fort, Post Office, Buade at left Fabrique, (City Hall) and turning left into St. John street.
- 0.57 Auditorium and Y. M. C. A. Building. Turn right into Des Glacis Street and left at D'Aiguillon. Keep following trolley into Abraham Hill.
- 0.96 Turn right into Crown Street.
- 1.43 C. P. R. crossing. Turn left into Gignac street.
- 1.47 Leave bridge leading to Victoria Park and turn right across Drouin Bridge.
- 1.81 Turn left into Charlesbourg road.
- 2.36 At left Church of St. François D'Assise.
- 2.88 Limits of City of Quebec. Enter parish of Charlesbourg.
- (2) 3.63 C. N. Railway crossing.
- 4.63 Church of Charlesbourg at right road at left. Keep straight ahead.
- (4) 5.98 Road at left. Keep straight ahead.
- 7.83 A chapel at left.
- 7.88 At Fork bear left.
- 8.58 At right, road to Lake Beauport. Keep straight ahead.
- 9.48 Crossing rivière Jaune.
- (8) 9.73 Church of N. D. des Laurentides. At Fork by the left by Lake St. Charles 3.05 miles. Turn right to Stoneham. (New macadam for about 7 miles.)
- 10.46 Road at left leading to Lake St. Charles 2.60 miles. Turn right to Stoneham. Excellent view of Lake St. Charles and mountains in distance (3 miles.)
- 12.38 Enter parish of St. Edmond of Stoneham.
- 15.50 Crossing River Huron, Dundas bridge

Quebec to Valcartier—Continued.

- (9) 15.70 At right road to Church of St. Edmond de Stoneham. (1.25 mile.) Turn left toward Rivière Jacques Cartier.
- 17.86 At right the Lake of Dugas (formerly Peter Wrights property) (mountainous scenery.)
- 18.12 Road at left. Keep straight ahead.
- 20.45 At left The Club of the Three Little Lakes. Most select and picturesque fishing and summer resort in the province.
- 21.26 At right the last of the Three Lakes.
- 21.66 Road at the left. Keep straight ahead.
- 22.20 Turn left. Following River Jacques Cartier for a while (mountainous country) coming unto the view of the Jacques Cartier river. Excellent place for photos, commanding view for twenty miles around.
- 23.64 Turn right.
- 23.46 Turn left (William Boyd's place good wholesome meal can be had at Farm house, tea and lunch service. Also guardian of fishing and hunting reserves. Beware of very steep hill go slow down to river bed road of Jacques Cartier.)
- 24.30 Road at left. Keep straight ahead towards the river.
- 24.45 Enter St. Gabriel de Valcartier.
- 28.60 At right road to St. Jacques Lake. Keep ahead.
- 29.15 At right road to river crossing turn left.
- 31.92 Turn right and follow this a regular road to Valcartier Village. Follow rapids and beautiful scenery into the village of Valcartier.
- 32.80 Village of Valcartier. Tourist not wishing to visit Valcartier camp, keep straight ahead into the village of Lorette, joining route to Quebec. By turning right and passing front of Church and turning left towards Quebec.

(See Valcartier to Quebec 4.30 mile shorter.)

SUMMER CAMP AND MOTORING REQUISITES

Pocket Knife, Fork and		
Spoon Sets.....	\$1.75 to \$	2.25
Pocket Match Boxes.....	.90 to	3.00
Pocket Compasses.....	1.50 to	5.00
Pocket Drinking Cups...	.90 to	2.25
Pocket Flash Lights.....	1.00 to	2.50
Picnic Sets.....	4.75	
Medicine Cases.....	1.25 to	10.00
Radio Watch Bracelets..	4.00	
Unbreakable Mirrors.....	.50 to	1.00
Fountain Pens.....	1.00 to	3.00
Penknives.....	.60 to	3.00
Tool Kits.....	3.00 to	6.00
Hussifs.....	1.25	
Sun Glasses.....	.50 to	1.00
Automobile Goggles.....	1.00 to	4.00
Safety Razor Sets.....	2.50 to	5.00
Flasks.....	.75 to	10.00
Field Glasses.....	5.00 to	70.00

PLATINUM POINTS FOR
MAGNETOS AND VIBRATORS
SUPPLIED AND ADJUSTED

G. SEIFERT & SONS

- DIAMOND MERCHANTS -
JEWELLERS and OPTICIANS

16 FABRIQUE STREET, - - - QUEBEC

OPPOSITE CITY HALL

TRIPS AROUND THE CITY

- QUEBEC CITY**—Sights historic and picturesque.
- SPENCER WOOD**—Residence of Lieutenant-Governor.
- WOLFE'S COVE**—Where Wolfe scaled the Heights from the River Front.
- ST. LOUIS ROAD**—Taking in Plains of Abraham overlooking St. Lawrence.
- ST. FOYE ROAD**—Battle fields of St. Foye overlooking St. Charles Valley.
- CAP ROUGE**—Quebec Bridge. Largest span in the world in course of erection.
- LAKE BEAUPORT**—Unrivalled Mountain Scenery.
- INDIAN LORETTE**—Remnant of Hurons. Indian relics several centuries old.
- MONTMORENCY FALLS**—Famous waterfalls and residence of Duke of Kent.
- ST. ANNE DE BEAUPRE**—Canada's Famous Shrine.
- VALCARTIER**—Canada's Great Military Camp and training ground.

All to be found on the maps.

HISTORICAL NOTES OF QUEBEC

- (1) Oldest city in the Dominion of Canada.
- (2) Jacques Cartier landed and established colony 1533.
- (3) Founded by Samuel de Champlain 1608.
- (4) Has been besieged five times.
- (5) Royal William, first steamer to cross the Atlantic launched here in 1833.
- (6) Sous-le-Cap, narrowest Street in North America.
- (7) Martello Towers used in ancient times as a "watch" for the enemy.
- (8) Notre Dame des Victoires Church, still standing, over 300 years old.
- (9) Break-neck steps, Little Champlain St., Landslide 1889.
- (10) Place where Montgomery fell, seen from Champlain Street.
- (11) House where Montcalm died, Louis Street.
- (12) Famous Dufferin Terrace, over-looking St. Lawrence.



QUEBEC

The finest and most historical city on the continent should be the meeting place of all the motorists during the

PROVINCIAL EXHIBITION

one of the greatest annual events of Canada.

10
DAYS



10
DAYS

**THE EXHIBITION WHERE
IT PAYS TO GO.**

FOR FURTHER INFORMATIONS, APPLY TO

Mr. D. O. L'ESPERANCE,
President.

Georges MORISSET,
Secretary.

CITY HALL, QUEBEC, P. Q.

QUEBEC THREE-RIVERS and MONTREAL

Leaving Chateau Frontenac Hotel

- 0.04 Turn right into St. Louis street from Chateau Frontenac.
 - 0.53 Government Building at right.
 - 0.55 At left, the Drill Hall.
 - 1.15 At left Wolfe Monument and the Plains of Abraham.
 - 1.90 Turn right into the Avenue of the Braves.
 - 2.22 Turn left into St. Foy road, Monument of the Braves at right.
 - 3.11 Boundary line between city and parish of St. Foye.
 - 3.56 Belmont cemetery at right.
 - 4.30 Route du Vallon at left. Keep straight ahead.
- (1)
- 5.29 At left, Church of St. Foye and road. Keep straight ahead.
 - 5.40 Convent at right.
 - 5.59 Turn right into route La Suède, going north down long hill.
 - 6.38 Crossing Transcontinental.
 - 7.11 Crossing C. N. Railway. Keep straight ahead.
 - 7.45 St. Foye boundary line. Enter parish of Ancienne Lorette.
 - 8.02 At left, road joining Cap Rouge by-road. Keep straight ahead.
 - 8.15 Turn left along range Champigny. The road going north leads to Church of Ancienne Lorette.
 - 8.64 Calvary (Cross) at left.
 - 9.27 School at right.
 - 9.44 Calvary (Cross) at right.
 - 9.84 At left, road to Cap Rouge. Keep straight ahead.
 - 10.14 Crossing Picher's wood bridge (128 feet.)
 - 10.33 Calvary (Cross) at right.
 - 10.70 Crossing T. C. Railway.
 - 10.72 Road to Lake St. Augustin at left. Keep straight ahead.
 - 12.23 Boundary line between Ancienne Lorette and St. Augustin.
 - 13.01 At right, Athanase Cantin road to range des Mines. Keep straight ahead.
 - 13.38 At left, road to Lake St. Augustin and Cap Rouge. Keep straight ahead.
- (2)
- 14.13 Church of St. Augustin at left.
 - 14.59 At left, road to C. N. Railway station. Straight ahead.
 - 15.70 Calvary (Cross) at right.

Quebec Three-Rivers and Montreal—Continued.

- 17.03 Calvary (Cross) at right.
18.13 Boundary line between St. Augustin and Neuville.
19.96 At right, road to Neuville station. Keep straight ahead.
20.35 Road at right. Keep straight ahead.
20.91 At left, road to wharf.
21.27 At left, road to C. N. Railway station. At right Neuville's church. Keep straight ahead.
22.46 Calvary (Cross) at right.
23.43 At right, road to Pont Rouge (6 miles) sand road. Keep straight ahead.
25.83 By-road at right. Keep straight ahead.
25.99 Boundary line between parishes of Neuville and Les Ecureuils.
27.45 At right, road to 2nd range. Keep straight ahead.
27.78 At left, road to C. N. R. Station. Keep straight ahead.
27.80 Church of Les Ecureuils at left.
27.90 By-road at right. Keep straight ahead.
29.18 Boundary line between Les Ecureuils and Donnacona.
29.65 Hotel Donnacona at left.
- (4a) 29.75 At left, road to C. N. R. paper mill. Keep straight ahead.
30.10 Crossing river Jacques-Cartier (Donnacona iron bridge 390 feet.) Boundary line between Donnacona and Cap Sante.
30.72 At right, road to Pont-Rouge.
31.99 At right, road to St. Basile, macadam.
- (5) 32.36 Keep straight ahead. At left, road to Church of Cap Sante. Keep straight ahead.
35.43 By-road at right. Keep straight ahead.
36.06 Boundary line between Cap Sante, and Portneuf.
37.01 By-road at right. Keep straight ahead.
37.10 At left, Protestant Church of Portneuf.
37.41 Crossing river Portneuf. Iron bridge 92 feet.
37.43 Turn sharp to the left after crossing Road at right. C. P. R. station.
- (6) 37.50 Church of Portneuf at right.
37.60 School at left.
38.46 At right, road to 2nd range. Keep straight ahead.
38.85 Boundary line between Portneuf and Deschambault.
40.14 C. N. R. crossing.
40.98 At right, road to C. N. R. station, C. N. R. $\frac{1}{4}$ mile and C. P. R. $1\frac{1}{4}$ miles. Keep straight ahead.

Quebec, Three-Rivers and Montreal—Continued.

- 41.27⁷ At left road to Deschambault wharf.
Keep straight ahead.
- (7) 41.48 At left road to Church Deschambault
Keep straight ahead.
- 43.10 At right, road to 2nd range. Keep
straight ahead.
- 44.35 At right, road to Lachevrotière (2
miles) and to St. Marc (4.5 mile).
Keep straight ahead.
- 44.68 At right a calvary (Cross) on a pro-
montory.
- (7a) 44.87 Bridge in concrete on river Lache-
vrotière. A mill at right.
- 45.17 Boundary line between Deschambault
and Grondines.
- 45.58 At right, a by-road. Keep straight
ahead.
- 47.20 Boundary line between the parish
and Village of Grondines, sign at
right GO SLOW.
- 47.65 At right road to St. Casimir. Keep
straight ahead.
- 48.08 At left road to Grondines wharf.
Keep straight ahead.
- (8) 48.56 At left, church of Grondines.
- 49.85 Boundary line between village and
parish of Grondines. Creek crossing.
- 49.89 At right road to 2nd and 3rd ranges.
Keep straight ahead.
- 51.66 At right, road to 2nd and 3rd ranges.
Keep straight ahead.
- 52.21 Boundary line between Grondines and
Ste. Anne de la Pérade, Co. of Cham-
plain.
- 53.48 Calvary (Cross) at right.
- 54.63 Crossing creek Dorvillier.
- 56.53 Boundary line between parish and
village of Ste. Anne de la Pérade.
- (9) 57.21 Church of St. Anne at right turn
left to bridge.
- 57.25 Crossing east branch of river St.
Anne. Iron bridge 643 feet long.
Toll bridge fare 25cts.
- 57.31 Half way on east bridge. Boundary
line between village and parish of
Ste. Anne.
- 57.43 Crossing west branch of river St.
Anne. Iron bridge 215 feet long.
Boundary line between Ste. Anne
and Batiscan.
- 61.33 Turn sharp left. By continuing the
road it leads to Ste. Geneviève,
county of Champlain where is a
bridge over the Batiscan river.

Quebec, Three-Rivers and Montreal—Continued.

- 61.46 At right road to bac ferry turn right to crossing, into dirt road, nearly $\frac{1}{2}$ mile. Be careful the road being narrow. Bridge over Batiscan river 570 feet has fallen down.
- 61.74 After crossing turn left into the road Bac ferry 50cts. Use the trumpet.
- 62.80 At right road to C. P. R. station near 1 mile, and to St. Geneviève. Keep straight ahead.
- (10) 63.43 Church of Batiscan at right.
- 64.65 At right route du Coteau. Keep straight ahead.
- 66.30 At left, road to signal service station. Keep straight ahead.
- 66.79 Boundary line between Batiscan and Champlain. At right route a Picardy Keep straight ahead.
- 66.87 Crossing river Champlain. Iron bridge 75 feet long.
- 68.33 At left, road to range Dontigny. Keep straight ahead.
- (11) 69.90 Church of Champlain at right.
- 70.03 At right, road to station C. P. R. $1\frac{1}{2}$ mile and to St. Luc. Keep straight ahead.
- 71.51 At right, route to St. Pierre. Keep straight ahead.
- 73.38 By-road at right. Keep straight ahead.
- 74.60 Boundary line between Champlain and Cap de la Madeleine.
- 76.01 At right, road to station Red Mill and to paint factory. Keep straight ahead.
- 78.67 Boundary line between parish and village of Cap de la Madeleine. For Three Rivers follow concrete to the bridge on the St. Maurice river.
- 79.00 Crossing C. P. R. line to St. Maurice Paper Co.
- 79.01 C. P. R. line to St. Maurice Paper Co.
- (12) 79.28 At left road to Cap de la Madeleine shrine. Springs.
- 80.82 Crossing C. P. R. line to Wayagamack factory.
- 81.15 At right, road to St. Louis de France, Mont Carmel, Almaville, Shawinigan Falls, Ste. Flore and Grand'Mere. Turn sharp to your left over the iron bridge to Three Rivers. (See map of Three Rivers.)

Quebec, Three-Rivers and Montreal—Continued.

- 81.25 Crossing river St. Maurice 1st bridge 745 feet, 2nd bridge 1383 feet. Boundary line between village Cap de la Madeleine and city of Three Rivers. Enter Three Rivers by St. Maurice street.
- (12a) 82.38 Turn left into Laviolette Avenue. Deblois Sanatorium to the right and going by Notre Dame street.
- 83.18 Turn right, and follow Notre Dame street.
- 84.63 Stone post at left boundary between city and parish of Three Rivers.
- 86.42 At right, by-road to range St. Marguerite Calvary, (Cross) at right. Keep straight ahead.
- 86.86 At right, road to next range. Keep straight ahead.
- 88.12 Boundary line between parishes of Three Rivers and Pointe du Lac.
- 88.96 At right, road Des Duval. Keep straight ahead.
- (13) 92.12 At right, Church of Pointe du Lac.
- 92.13 At right, road to C. P. R. station $\frac{3}{4}$ mile and range St. Charles. Keep straight ahead, and cross St. Charles.
- 93.88 Turn right to C. P. R. crossing.
- 94.10 Crossing C. P. R.
- 94.34 Road at right. Keep straight ahead.
- 94.47 Turn left, this road leads to range St. Nicholas.
- 95.60 Turn left, to Yamachiche.
- 95.84 Crossing C. P. R.
- 96.85 Boundary line between Pointe du Lac and Yamachiche.
- 97.30 Turn right to C. P. R. crossing.
- 98.88 C. P. R. crossing.
- 98.30 At right, road to St. Etienne and St. Thomas. Keep straight ahead.
- 98.40 Crossing river Grand Machiche. Wood bridge 60 feet long. Go slow. Keep straight ahead.
- 99.01 At right, road to St. Sevère and St. Barnabé. Keep straight ahead.
- 99.10 Crossing river Lambert or Little Machiche bridge in concrete 41 feet long. Turn left after crossing.
- 99.35 Crossing C. P. R.
- 99.91 Boundary line between parish and village of Yamachiche.
- 100.00 At right, road to C. P. R. station. 0.20 mile to L'Acadie, St. Barnabé, and St. Sevère. Keep straight ahead.
- 100.01 At left road to Canton. Keep straight ahead.

Quebec, Three-Rivers and Montreal—Continued.

- (14) 100.10 At left, Church of Yamachiche.
100.31 Boundary line between village and parish of Yamachiche.
100.85 Turn right, at double fork.
100.27 At right, a by-road. Keep straight ahead.
101.65 C. P. R. crossing.
103.14 At right, road to St. Léon (3 miles). Keep straight ahead.
103.45 Boundary line between Yamachiche and Louiseville. County of Maskinongé. At left, road to river. Keep straight ahead.
106.35 C. P. R. crossing.
106.78 Turn right, to River du Loup crossing, Iron bridge 242 feet long.
106.81 Middle of River. Boundary line between parish and village of Louiseville.
- (15) 106.91 At right church of Louiseville.
107.04 At right road to C. P. R. station 0.33 mile. Keep straight ahead.
107.30 Crossing Little River du Loup, iron bridge 50 feet. Boundary line between town of Louiseville and parish of River du Loup.
107.53 By-road at left. Keep straight ahead.
107.57 At right, road to St. Ursule. Keep straight ahead.
107.63 C. P. R. crossing.
109.24 C. P. R. crossing.
109.28 At left, road to La Baie des Ounes. Keep straight ahead.
109.41 Boundary line between Louiseville and Maskinongé.
110.45 C. P. R. crossing.
110.51 At right, road to St. Ursule. Keep straight ahead.
- (16) 111.24 At left, road to Maskinongé, C. P. R. station 0.33 miles. Keep straight ahead.
111.32 Crossing river Maskinongé. One iron bridge 94 feet long follow concrete.
114.11 At right, road to St. Justin and St. Isidore. Keep straight ahead.
114.14 At right, road to St. Justin. Keep straight ahead.
114.20 At left, road to St. Jacques. Keep straight ahead.
115.50 At left, road to St. Joseph and at left to St. Justin. Keep straight ahead.
116.50 Boundary line between Maskinonge and St. Barthelémi.
- (17) 118.82 At left, church of St. Barthelémi.
117.85 At left, road to C. P. R. station. Keep straight ahead.

Quebec, Three-Rivers and Montreal—Continued.

- 119.90 By-road at left. Keep straight ahead.
119.91 At right, road to St. Jean, St. Joachim and St. Gabriel. Keep straight ahead.
120.17 Boundary line between St. Barthelémi and St. Viateur.
121.85 At left, road to Berthier. At right, road to St. John. Keep straight ahead.
121.76 Boundary line between St. Viateur and St. Cuthbert.
103.00 At right, road to village of St. Cuthbert, turn left.
123.23 At right bridge, another road to village at St. Cuthbert. Keep straight ahead.
124.28 By-road at left. Keep straight ahead.
124.68 C. P. R. crossing.
124.85 Turn right and cross river Chicot, wood bridge 80 feet long. Turn left.
126.27 Turn right to town of Berthier.
128.06 At right, road to St. Norbert and St. Cuthbert. Keep straight ahead.
128.13 Crossing river Bayonne wood bridge 115 feet long. Boundary line between parish and town of Berthier. Turn left into the 1st street to reach the last street along St. Lawrence river and turn right.
- (19) 129.09 Church of Berthier at right.
129.49 Boundary line between town and parish of Berthier.
130.06 Crossing river Chalope Wood bridge 126 feet long.
130.80 Boundary line between Berthier and Lanoraie.
134.19 At right, road to St. Cuthbert and St. Norbert. Keep straight ahead.
137.60 Turn right when entering village.
138.00 At left, road to wharf.
138.07 At right, road to St. Thomas and to Joliette 15 miles and to C. P. R. R. station $7\frac{1}{2}$ miles. Keep straight ahead.
- (20) 139.09 At right, Church of Lanoraie.
142.29 Boundary Lanoraie and Lavaltrie.
143.99 At left, road to wharf, at right, road to C. P. R. station, 8 miles. Keep straight ahead.
158.85 Boundary line between L'Assomption and St. Paul L'Ermite.
160.84 At right road to C. P. R. station, $\frac{1}{4}$ mile at left road to Repentigny. Keep straight ahead
- (24) 160.95 At right church of St. Paul L'Ermite.
162.57 Boundary line between St. Paul L'Ermite and Charlemagne.

Quebec, Three-Rivers and Montreal—Continued.

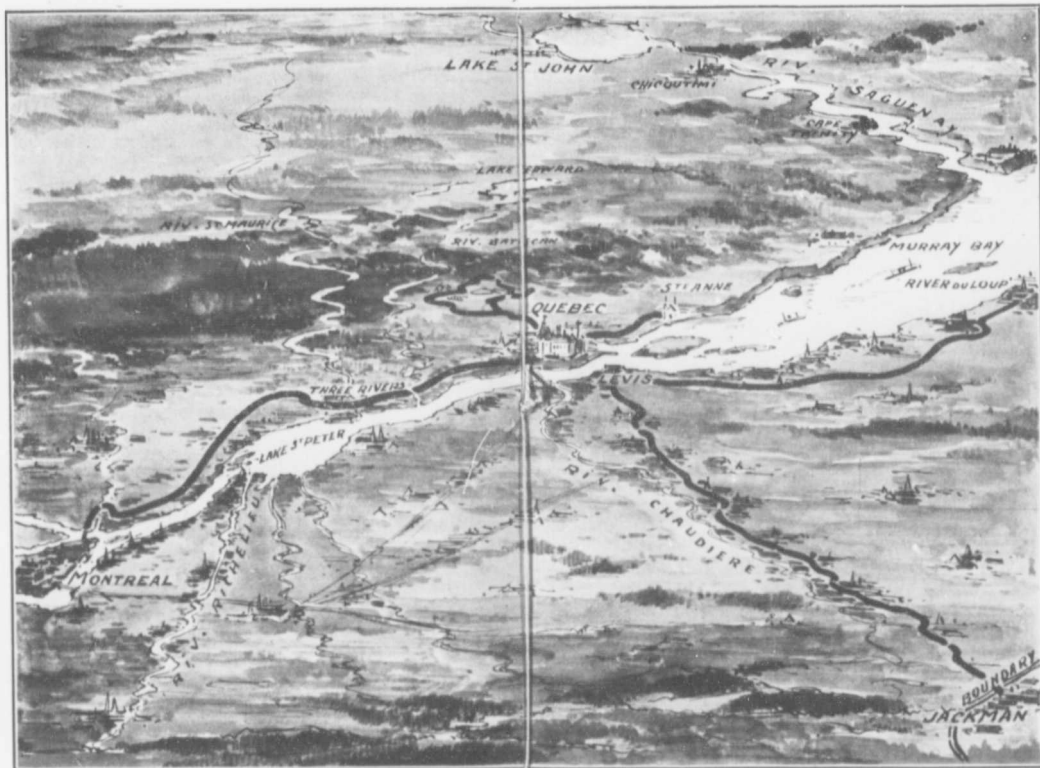
- (25) 163.34 At right, Sacred Heart Avenue, leading to church and station of Charlemagne. C. P. R. $\frac{1}{4}$ mile.
- 163.68 At right road to Lachenaie. Keep straight ahead.
- 163.79 West boundary of parish Charlemagne. At crossing River Des Prairies. Keep straight ahead and cross Viaduct of C. N. Railway bridge and it is forbidden to take the left way on the turn, left along the bridge when going towards Montreal. First bridge 1119 feet long.
- 164.01 Between the two bridges is Bourdon Island, (2166 feet.) Second bridge on River Des Prairies 1414 feet long.
- 164.68 East boundary of Laval de Montreal.
- 164.72 After crossing bridges turn right. The road on the left leads to the hotel Du Bout de L'île.
- 164.95 Turn left.
- 164.96 Crossing trolley.
- 165.14 At right, road to River Des Prairies. Keep straight ahead.
- 165.19 C. N. Railway crossing.
- 168.85 Church of Pointe aux Trembles at left.
- 172.19 At left, church of Longue Pointe follow Notre Dame street.
- 174.06 At left, Dominion Park.
- 178.27 At left, Park Sohmer.
- 178.65 At right, entrance to Place Viger Hotel.
- 178.92 City Hall of Montreal.
- 179.11 Boulevard St. Laurent at right. Keep straight ahead.
- 179.23 Notre Dame church at left.
- 179.52 Centre of McGill street, at corner of Notre Dame street. Victoria Square.

— QUEBEC —
TELEGRAPH
LIVE RELIABLE
AUTOMOBILE NEWS

3 — EDITIONS DAILY — 3

ONLY
ENGLISH EVENING NEWSPAPER IN CITY

Registered according to law by J. F. O'BRIEN, 1917.



GENERAL MAP—QUEBEC TO THREE-RIVERS AND MONTREAL
QUEBEC TO RIVER-DU-LOUP, AND QUEBEC TO JACKMAN via LEVIS

MONTMORENCY FALLS AND KENT HOUSE

A SIGHT which should not be missed is the Montmorency Falls, only 7 miles from Quebec, a beautiful water-fall 274 feet high (See St. Anne Map).

In a setting of grandeur the water dashes over the rocks above and then falls with a thundering roar into the placid waters below. The towering cliffs on either sides rising directly out of the water give the whole a beautiful and awe inspiring appearance, and it is possible to walk to a little "look-out" perched on a rock jutting out of the cliff about half way up where the full magnificence of nature's beauty may be appreciated.

The Kent House, the old residence of the Duke of Kent is situated near the Falls and is now a popular resort.



Special Electric Parlor Car.—Q. R. L. & P. Co.

TRIP TO MONTMORENCY FALLS AND STE. ANNE DE BEAUPRE

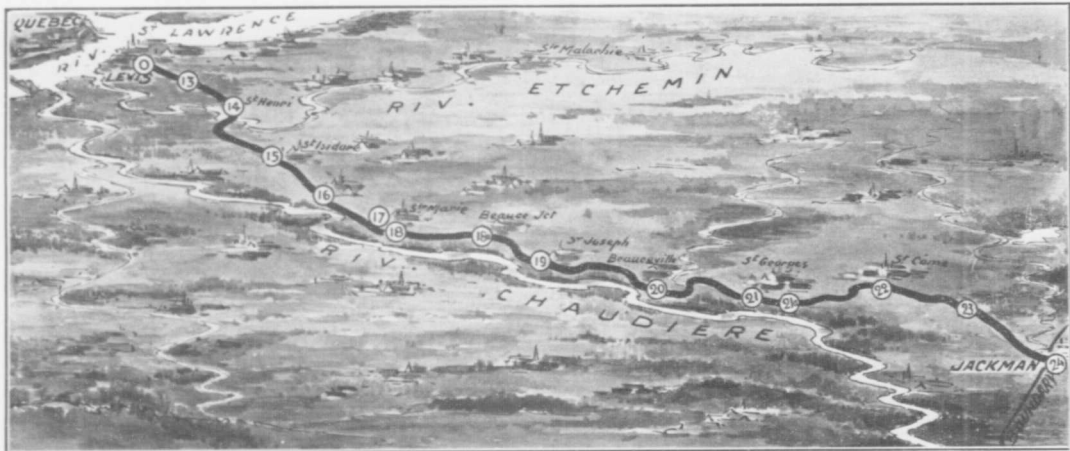
Fast Special Electric Parlor Trains leave St. Paul Street Station at 9.45 A. M. and 2.15 P. M. accompanied by Guide. Fare \$1.55 return.

ST. ANNE DE BEAUPRE

ONE of the most interesting trips and one that should not be missed is to the famous Shrine at St. Anne de Beaupré. The map shows the road in detail and motorists will find it a very pretty drive.

From Quebec to St. Anne de Beaupré is about 21 miles, and the country around is very beautiful.

Beaupré dates back to 1657, when it was organized as a parish. The first colonists that settled there came chiefly from Brittany and Normandy. In time the parish grew and at present numbers about 2,000 souls, all Catholics of French descent. There are many objects of interest to the tourist, including relics and antiques, which can only be found here.



QUEBEC-JACKMAN.

JACKMAN-LEVIS

From Jackman to International boundary there are 11 miles without settlement on Canadian side and 12 miles on American side. A steep hill to ascend to reach (Line House Hotel) at the Frontier.

- | | | |
|------|--|-------|
| | 0.00 International boundary between state of Main and Province of Quebec. Line House Hotel. | 90.52 |
| | 6.02 Enter parish of St. Théophile | 84.50 |
| (23) | At left Custom House and road to Church, and St. Théophile. P. O. Armstrong. Keep straight ahead. | |
| | 11.60 Crossing river Portage. | 79.92 |
| | 12.12 Crossing river Wilson | 78.46 |
| | 14.37 Boundary line between St. Côme and St. Théophile. | 76.15 |
| | 15.72 Crossing river Metgermette. | 74.80 |
| | 18.95 Crossing river Grand Coudée or Vachon. | 71.57 |
| | 19.19 Line between parish of St. Côme and village of Linière. | 71.33 |
| (22) | 19.52 Church of St. Côme at left. | 71.00 |
| | 19.72 At right, by-road to St. Zacharie. Keep straight ahead. | 70.80 |
| | 19.85 At left, road and Iron bridge. Keep straight ahead. | 70.67 |
| | 20.32 Limits of village of Linière parish of St. Côme. | 70.20 |
| | 25.22 Boundary line between St. Côme and St. Georges. | 65.30 |
| | 26.61 By-road at right. Keep straight ahead. | 63.91 |
| | 27.08 Jersey P.Q., at right road to St. Martin. Keep straight ahead. | 63.44 |
| (21) | 28.92 Crossing a concrete bridge over a creek, and immediately a street at left, near the river road, a bridge and a road to Church of St. Georges. Keep straight ahead. | 61.60 |
| | 30.00 Turn right, into St. George road following river. | 60.52 |
| | 30.03 Crossing river Famine. Iron bridge. | |
| | 30.07 By-road at right. Keep straight ahead. | 60.45 |
| | 30.16 At right by road to St. Georges station, 0.20 mile. Keep straight ahead. | |
| | 32.42 At right road to Cumberland mills. | |
| | 33.05 Boundary line between St. Georges and St. François. | |
| | 34.06 By-road at right. Keep straight ahead. | |
| | 34.35 Turn sharp and slow at river Gilbert Q. C. Railway crossings. | |
| | 36.08 At right by-road to St. Benjamin, 6 miles. Keep straight ahead. | |

PURE———

JAEGER

———WOOL

The world's standard for
clothing and bedding

JAEGER Stand for Underwear,
Hosiery,
Fancy Knit

Goods for MEN, WOMEN and
Children; and for countless lines
of Woollen Goods. you wonder
where to get.

JOHN DARLINGTON,

REGISTERED

SELLING AGENT FOR
JAEGER PURE WOOL

Buade & du Fort Sts., QUEBEC

Opposite Post Office

PHONE 666

Near Chateau

Jacman-Levis—Continued.

- 36.16 Village of the Punaise.
 37.43 Q. C. Railway crossing. 53.09
 37.84 Boundary line between St. François
 and Beauceville.
- (20) 39.01 At left, road and iron bridge to
 church of Beauceville, to Sherbrooke,
 and Montreal. Central Hotel at
 right. Keep straight ahead. 51.51
 39.59 Boundary line between Beauceville and
 St. François.
 40.97 Q. C. R. crossing.
 41.87 By-road at right. Keep straight ahead.
 43.97 Boundary line between St. François
 and St. Joseph.
 44.17 By-road at right. Keep straight ahead.
 47.98 By-road at right. Keep straight ahead.
 48.41 At left, road and iron bridge to East
 Broughton. Keep straight ahead.
- (19) 48.43 Church of St. Joseph at right. 42.07
 48.64 St. Joseph Station Q. C. R.
 48.65 Cloutier's Hotel. Two dangerous turn-
 ing immediately before the hotel.
 50.69 By-road at right. Keep straight ahead.
 51.90 Boundary line between St. Joseph and
 L'Enfant-Jésus.
 53.69 By-road at right. Keep straight ahead.
 53.77 Church of L'Enfant-Jésus at right.
 53.78 At left, road to St. Séverin 6½ miles.
 Keep straight ahead.
 60.20 At left, road and iron bridge. Keep
 straight ahead.
- (18) 60.28 Church of St. Marie de Beauce at
 right. 30.24
 60.32 Road to station at right. Keep
 straight ahead.
- (17) 61.08 At right, St. Anne's chapel. 29.44
 61.62 At right, by-road to Ste. Marguerite,
 6½ miles. Keep straight ahead.
 62.42 By-road at right. Keep straight ahead.
 64.09 Boundary line between Ste. Marie and
 St. Maxime, Dorchester county.
 65.32 Scott's station Q. C. Railway at
 right. 25.20
 65.70 At left, road and iron bridge to S
 Bernard, 3 miles. Keep straight ahead.
- (16) 66.06 Dangerous right turning at the foot
 of the Church St. Maxime. Church
 at left. 24.46
 67.02 At right road to Ste. Henedine. Keep
 straight ahead.
 68.68 Boundary line between St. Maxime de
 Scott and St. Isidore.
 68.97 Crossing river Le Bas.
 69.52 Road at left. Keep straight ahead.

Seeing Quebec!

You have not "SEEN" Quebec until
you have taken our

SPECIAL AUTOBUS TOUR.

LARGE "GREEN." 20 Passenger.

Autos leave Chateau hourly.

Fifteen mile auto drive for **\$1.00**

CONSULT YOUR OWN INTEREST
DEAL WITH A RESPONSIBLE COMPANY

CHATEAU FRONTENAC LIVERY

OWNED AND OPERATED BY

**THE QUEBEC CARTAGE & TRANSFER CO.
LIMITED**

PHONES: 4142-386-2867

Official passenger & baggage transfer agents to all railways and steamships, operating to Quebec.

Agents in uniform meet
all trains and steamers.

**TOURING CARS, TAXIS & CABS
FOR HIRE**

THE MOST UP-TO-DATE IN THIS CITY

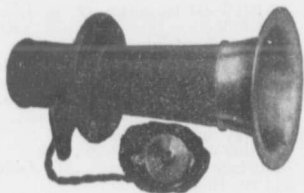
- - ASK - -

CHATEAU FRONTENAC CARRIAGE AGENT

PHONE: 4142

Jackman-Levis—Continued.

- 69.72 At left road to village of St. Isidore
1.90 mile. Four corners. Keep
straight ahead.
- (15) 71.52 At left road to Church of St. Isidore
1.30 mile. Four corners. Keep
straight ahead. 19.00
- 72.92 Crossing Tanscontinental Railway.
- 73.12 Road at right, bear left.
- 73.72 Crossing creek Fouchette.
- 74.86 Boundary line between St. Isidore
and St. Henry.
- 75.32 At left, road to village of St. Isidore.
Bear right. 15.20
- 77.72 Turn right. The road straight ahead
leads to St. Lambert 8 miles.
- 78.10 At left, road to St. Jean Chrysostôme.
- 79.92 Road at right. Keep straight ahead.
- 79.96 Crossing river Etehem and turning
left. GO SLOW.
- 79.97 Stone church of St. Henri at right.
10.55
- 81.12 At right, road to St. Anselme and
St. Gervais. Keep straight ahead.
- 82.52 End of Fork bear left.
- 82.76 Boundary line between St. Henri and
St. Louis de Pintendre.
- 83.14 Crossing Intercolonial Railway, St.
Henri Station and Cartier Junction.
Dangerous crossing.
- 84.12 Road at right. Keep straight ahead.
- 84.62 Road at left. Keep straight ahead.
- (13) 85.07 Church of St. Louis at right. 5.45
- 85.12 Road crossing. Keep straight ahead.
- 85.72 Road at right. Keep straight ahead.
- 86.72 Road at left. Bear right.
- 87.12 Crossing river des Couture. Bound-
ary line between St. Louis de Pin-
tendre and N.D. de la Victoire. 3.40
- 87.22 Road at right. Keep straight ahead.
- 88.12 Road at left. Keep straight ahead.
- 89.10 Toll gate fare 10cts. 1.42
- (12) 89.17 Boundary line between the parish
of N. D. de la Victoire and the town
of Levis. 1.35
- (11) 89.40 Turn right into St. George street.
End of Provincial Road. (The last ten
miles are under supervision of road
Commission of the South Shore.) 1.12
- (10) 89.69 Turn left into Shaw Hill; at the end
of Shaw Hill turn left again into
Davidson Hill street. Steep grade
in both hills and sharp turning. .83
- 90.29 From foot of Davidson Hill, follow
trolley straight ahead. .23
- 90.52 Turn left on open square and cross
track to get steam ferry. Fare, car
and driver, 25 cts., extra passengers,
5cts. each. 0.00



TOOT!
TOOT!

TRY US FOR
AUTOMOBILE SUPPLIES

LARGEST ASSORTMENT IN
THIS CITY AND VICINITY

Ask for Our Illustrated Wall Sheet "A"

MECHANICS SUPPLY CO. Ltd.

80-90 ST. PAUL ST., QUEBEC

MONTCALM

HOTEL

AMERICAN AND
EUROPEAN PLAN

☞ Luxurious rooms with
all modern improvements;
magnificent views afforded,
overlooking the park.

☞ Meals à la carte are first
class and promptly served
from 6 A.M. to 1 A.M.

BILLIARD HALL

ENGLISH, FRENCH
—AND—
AMERICAN TABLES

RATES PER HOUR:

Carom Billiard tables...30c

6 pocket Billiard tables...30c

English Billiard tables...40c

A. J. PELLAND, PROP.

Corner ST. JOHN, Des GLACIS and ST. JOACHIM STS.

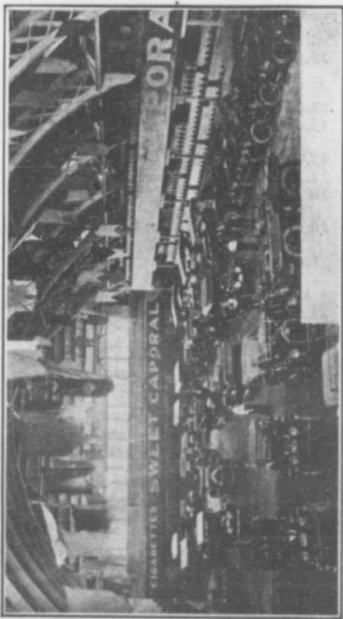
QUEBEC TO RIVIERE-DU-LOUP

From Levis ferry, turn at left.

- (1) 1.65 Church St. Joseph de Levis.
3.10 Road at right to Harlaka Junction,
bear left.
7.80 By-road crossing. Keep straight ahead.
- (2) 9.22 Church of Beaumont left.
10.67 At right, road to St. Charles, St.
Raphael, St. Gervais. Keep straight
ahead.
12.80 Enter St. Michel.
15.05 At right, road to St. Raphael, bear left.
- (3) 15.40 Church St. Michel at left.
17.10 Enter St. Valier.
18.10 Crossing large river Boyer.
- (4) 20.05 At left, road to Church at St. Valier.
Keep straight ahead.
21.90 Turn right.
- (5) 22.15 Crossing river des Mères.
22.90 Turn left and follow river St.
Lawrence. County of Montmagny.
23.00 Enter Bertier.
- (6) 25.80 Church of Berthier at left.
29.15 Enter St. Thomas.
34.75 Town of Montmagny.
- (7) 35.37 Church of Montmagny at right.
35.45 Bridge river du Sud.
35.60 Turn left for bridge Bras St. Nicholas.
35.92 At fork, turn right.
33.05 Enter Cap St. Ignace.
- (8) 41.85 Church Cap St. Ignace at right. At
fork in view of Church bear left.
44.10 At right road to St. Cyrille. Keep
straight ahead. Follow river St.
Lawrence.
45.00 Enter L'Islet, county of L'Islet.
49.15 At right, road to I. C. R. station, St.
Eugène and St. Cyrille. Keep straight
ahead.
- (9) 49.50 Church of L'Islet at left.
52.80 Enter St. Jean Port Joli.
53.20 By-road straight ahead. Turn left
to crossing river Trois Saumons.
Dangerous turning at the bottom
of the hill at right.
53.85 Crossing river St. Jean Port Joli.
Turn sharp after crossing.
57.80 At right, road to St. Aubert and I. C. R.
station. Keep straight ahead.

CHATEAU FRONTENAC GARAGE

Grande Allée, opposite Parliament Buildings
Largest Garage in Quebec City.



INTERIOR CHATEAU FRONTENAC GARAGE

Our Battery Service Station consists of charging, repairing and rebuilding Prest-O-Lite, Williard & Hart batteries Wrecking, towing and repairing a specialty; expert mechanics.

OPERATED BY

J O'Brien Auto Co.

REG.

Oldest Garage in Quebec City

Quebec to Rivière-du-Loup—Continued.

- (10) 58.05 Church St. Jean Port Joli, at left.
 62.12 Enter St. Roch des Aulnaies. At right
 Elgin road, Ste. Perpétue and St. Pam-
 phile. Keep straight ahead.
- (11) 66.20 Church St. Roch des Aulnaies at left,
 Near church at right, road to Ste.
 Louise, bear left.
 67.85 Crossing river Ferrie and road to
 Ste. Louise at right. Turn left.
 70.85 Enter Ste. Anne de la Pocatière, county
 of Kamouraska.
 72.70 At fork turn right.
 74.18 End of road turn left in to the village.
- (12) 74.35 Church at left. Turn right.
 76.41 By-road at left. Keep straight ahead.
 76.56 Crossing river St. Jean.
 76.62 At fork, turn left.
 77.81 At right road to St. Pacôme. Keep
 straight ahead.
 77.91 Enter Rivière Ouelle along I. C. R.
 line.
 79.06 Enter St. Pacôme.
 79.36 I. C. R. crossing.
 79.51 At right, route du Grand Moulin.
 Keep straight ahead.
 80.34 At left, route a Chenard. Turn right.
 80.66 Turn left to river crossing.
- 12a) 80.91 Crossing river Ouelle. Wood bridge
 81.06 End of road. Up short grade and
 turn left, meeting wires.
 81.78 Turn right, to St. Philippe.
 82.91 Enter St. Philippe.
 83.21 I. C. R. crossing.
 85.54 At right, road to Mont Carmel. Keep
 straight ahead.
- (13) 85.71 At right, church St. Philippe, at left,
 road to St. Denis.
 88.54 Enter St. Pascal.
 90.66 Crossing river Kamouraska.
 91.21 At left, road to Kamouraska. Keep
 straight ahead.
 91.44 Turn right to church.
- (14) 91.69 At left, Church St. Pascal.
 91.79 Turn left and
 92.04 cross I. C. R.
 95.24 By-road at right, and road to St.
 Germain at left. Keep straight ahead.
 96.19 Enter St. Hélène.
- (15) 97.69 Cross by-road leaving Church Ste.
 Helene at right.
 101.01 Cross concrete bridge.
 101.21 Road crossing. Keep straight ahead.
 102.21 Enter St. Alexandre.

Quebec to Rivière-du-Loup—Continued.

- 103.36 End of road turn left.
103.46 Turn right along I. C. R.
- (16) 105.98 By-road crossing in St. Alexandre village. Turn left to I. C. R. crossing. Partly macadam and good road.
106.13 I. C. R. crossing at station.
106.66 End of road. Turn left and immediately turn right to St. Andre and St. Lawrence river.
108.20 Turn left and right again.
108.36 Enter St. André.
109.41 Turn right into road along St. Lawrence river.
110.51 Enter N. D. du Portage.
- (17) 114.26 At right, road to St. Antonin, Church of N. D. du Portage at left.
117.51 Enter parish of Rivière du Loup.
119.06 Enter town of Fraserville.

In the Heart of Things
Take YOUR MEALS at



120 St. John St.

Phone 5993

TABLE AND ATTENDANCE UNSURPASSED

Home-Made Pies: Apple, Raisins, Coconut, Strawberry, Cranberry, Blueberry, Rhubarb. All kinds of Fruits served in season. ALSO: Finest assortment of Soft Drinks and Ice Cream.

"THE MENS' SHOP"

Always on Hand:

AUTOMOBILISTS GAUNTLETS

" DUSTERS

" CAPS

" RAINCOATS

CHAUFFEURS' COSTUMES

A SPECIALITY

N. E. Papillon

Gents Clothing
Hats, Outfits.

New Address: - - 406 ST. JOHN STREET

THE PROVINCE OF QUEBEC



THE Province of Quebec is the first of all the Provinces of the Dominion in the improvement of its roads. Since 1912 the Government of this Province, has been authorized to spend the sum of \$20,000,000.00 and has built five great provincial roads. Since 1911, it has had built more than 1200 miles of macadam and nearly 600 miles of graveling. Its road policy equals in popularity its dairy industry policy.

Since Confederation, there is not in the Dominion, without excepting the construction of railways, a policy of public improvement more interesting and more important than that of the roads in the Province of Quebec. In the service of popular interest, and in what concerns the improvement of roads, the Government of the Province of Quebec, has established a department perfectly organized, which not only follows the movement but is forward in organization.

ISLAND OF ORLEANS

Road Around Island of Orleans Direct Road, Safe,
seven miles of macadam.

Northern Route

- (1) 0.00 From Petronille's ferry.
 - (2) 0.10 To Kings road turn left follow river dangerous turning. —
 - (3) 4.75 Church of St. Pierre at right, road across Island.
 - (4) 12.67 Church St. Famille road across Island to St. John. Keep straight ahead.
 - (5) 20.17 At left, private road. Keep straight ahead.
 - (6) 21.17 Church St. François.
 - (7) 27.90 Church St. Jean. At right road across Island to St. Famille. Keep straight ahead.
 - (8) 36.40 Church St. Laurent.
 - (9) 37.90 At right road across Island to St. Pierre. Keep straight ahead.
 - (10) 42.75 To Ferry.
-

THE QUEBEC BRIDGE

Visitors should not fail to see the famous Quebec bridge, now nearing completion.

The route will easily be seen on the Quebec and Montreal map, and it is only about six miles from the city.

The two end spans are now completed and all is ready to receive the middle span now being constructed near Sillery. The bridge, when finished will be a marvel of engineering, and the biggest of its kind in the world. It is hoped to complete the huge structure this year, and visitors can judge for themselves amount of steel and work involved in such a huge undertaking, and when finished it will be a standing triumph of engineering skill.

Some idea of the immensity of the task can be gathered from the following details:

There are 90,000 tons of steel in the bridge altogether.

The main span is 1,800 feet long.

The steel work is 150 feet above water level.

The centre span (not yet placed) will be 640 feet long, 110 feet high at the centre, 88 feet wide, weighs 5,500 tons.

The total cost of the bridge is \$17,000,000.

The total length is 3,240 feet, or three fifths of a mile.

The single big centre span will be the largest in the world, approximately 100 feet more than the Firth' of Forth bridge in Scotland.

Furriers
Co



His Majesty
the King

FINE FURS

¶ For more than three quarters of a century Holt-Renfrew's in Quebec has been the Mecca of Americans in search of fine furs.

We particularize in
Fur Motor Robes
and Motor Coats
in Hudson Seal
Canada Beaver
Muskrat
Mink
Lynx
Persian Lamb

Holt, Renfrew & Co.
Limited

QUEBEC, Canada

ALSO AT

MONTREAL, TORONTO, WINNIPEG

VISITORS

TO

QUEBEC

Are always assured a hearty welcome at this great Store.

¶ The best merchandise the world produces for

MEN, WOMEN & CHILDREN

is always here in satisfying assortment and at pleasingly moderate prices.

¶ Our specialty is FURS and FUR GARMENTS, which we manufacture ourselves, your visit of inspection and comparison very cordially invited.

LARGEST
DEPARTMENTAL
STORE IN EASTERN
CANADA

THE PAQUET COMPANY LIMITED.

157-173, ST. JOSEPH ST., QUEBEC



TELEGRAPH PRINT, QUEBEC