

**CIHM
Microfiche
Series
(Monographs)**

**ICMH
Collection de
microfiches
(monographies)**



Canadian Institute for Historical Microreproductions / Institut canadien de microreproductions historiques

© 1997

Technical and Bibliographic Notes / Notes techniques et bibliographiques

The Institute has attempted to obtain the best original copy available for filming. Features of this copy which may be bibliographically unique, which may alter any of the images in the reproduction, or which may significantly change the usual method of filming, are checked below.

L'Institut a microfilmé le meilleur exemplaire qu'il lui a été possible de se procurer. Les détails de cet exemplaire qui sont peut-être uniques du point de vue bibliographique, qui peuvent modifier une image reproduite, ou qui peuvent exiger une modification dans la méthode normale de filmage sont indiqués ci-dessous.

Coloured covers/
Couverture de couleur

Covers damaged/
Couverture endommagée

Covers restored and/or laminated/
Couverture restaurée et/ou pelliculée

Cover title missing/
Le titre de couverture manque

Coloured maps/
Cartes géographiques en couleur

Coloured ink (i.e. other than blue or black)/
Encre de couleur (i.e. autre que bleue ou noire)

Coloured plates and/or illustrations/
Planches et/ou illustrations en couleur

Bound with other material/
Relié avec d'autres documents

Tight binding may cause shadows or distortion along interior margin/
La reliure serrée peut causer de l'ombre ou de la distorsion le long de la marge intérieure

Blank leaves added during restoration may appear within the text. Whenever possible, these have been omitted from filming/
Il se peut que certaines pages blanches ajoutées lors d'une restauration apparaissent dans le texte, mais, lorsque cela était possible, ces pages n'ont pas été filmées.

Additional comments: /
Commentaires supplémentaires:

Coloured pages/
Pages de couleur

Pages damaged/
Pages endommagées

Pages restored and/or laminated/
Pages restaurées et/ou pelliculées

Pages discoloured, stained or foxed/
Pages décolorées, tachetées ou piquées

Pages detached/
Pages détachées

Showthrough/
Transparence

Quality of print varies/
Qualité inégale de l'impression

Continuous pagination/
Pagination continue

Includes index(es)/
Comprend un (des) index

Title on header taken from: /
Le titre de l'en-tête provient:

Title page of issue/
Page de titre de la livraison

Caption of issue/
Titre de départ de la livraison

Masthead/
Générique (périodiques) de la livraison

This item is filmed at the reduction ratio checked below/
Ce document est filmé au taux de réduction indiqué ci-dessous.

10x	14x	18x	22x	26x	30x
<input type="checkbox"/>	<input type="checkbox"/>	<input type="checkbox"/>	<input checked="" type="checkbox"/>	<input type="checkbox"/>	<input type="checkbox"/>
12x	16x	20x	24x	28x	32x

The copy filmed here has been reproduced thanks to the generosity of:

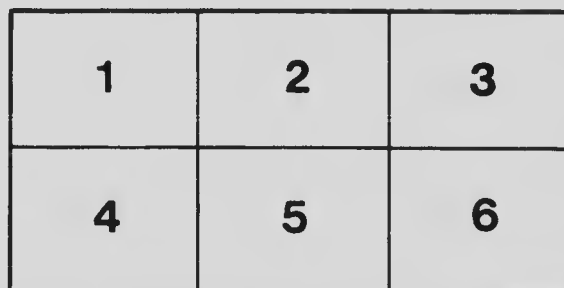
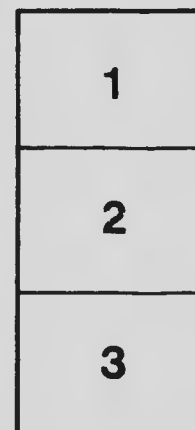
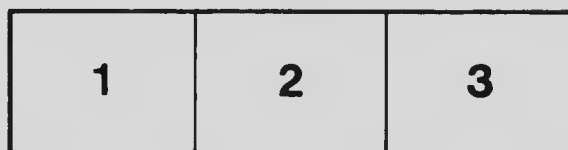
Anglican Church of Canada
General Synod Archives

The Images appearing here are the best quality possible considering the condition and legibility of the original copy and in keeping with the filming contract specifications.

Original copies in printed paper covers are filmed beginning with the front cover and ending on the last page with a printed or illustrated impression, or the back cover when appropriate. All other original copies are filmed beginning on the first page with a printed or illustrated impression, and ending on the last page with a printed or illustrated impression.

The last recorded frame on each microfiche shall contain the symbol \rightarrow (meaning "CONTINUED"), or the symbol ∇ (meaning "END"), whichever applies.

Maps, plates, charts, etc., may be filmed at different reduction ratios. Those too large to be entirely included in one exposure are filmed beginning in the upper left hand corner, left to right and top to bottom, as many frames as required. The following diagrams illustrate the method:



L'exemplaire filmé fut reproduit grâce à la générosité de:

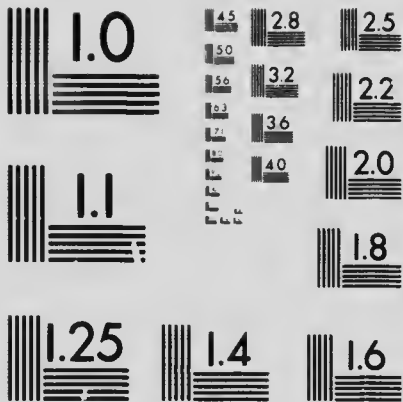
Anglican Church of Canada
General Synod Archives

Les images suivantes ont été reproduites avec le plus grand soin, compte tenu de la condition et de la netteté de l'exemplaire filmé, et en conformité avec les conditions du contrat de filmage.

Les exemplaires originaux dont la couverture en papier est imprimée sont filmés en commençant par le premier plat et en terminant soit par la dernière page qui comporte une empreinte d'impression ou d'illustration, soit par le second plat, selon le cas. Tous les autres exemplaires originaux sont filmés en commençant par la première page qui comporte une empreinte d'impression ou d'illustration et en terminant par la dernière page qui comporte une telle empreinte.

Un des symboles suivants apparaîtra sur la dernière image de chaque microfiche, selon le cas: le symbole \rightarrow signifie "A SUIVRE", le symbole ∇ signifie "FIN".

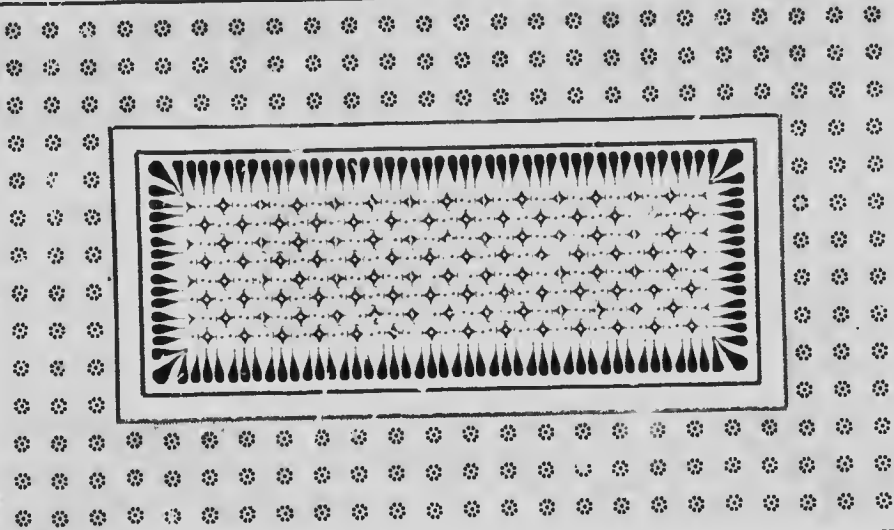
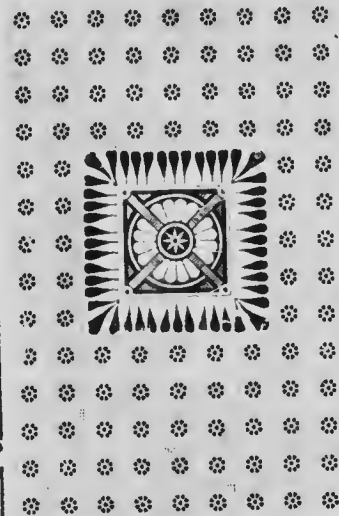
Les cartes, planches, tableaux, etc., peuvent être filmés à des taux de réduction différents. Lorsque le document est trop grand pour être reproduit en un seul cliché, il est filmé à partir de l'angle supérieur gauche, de gauche à droite, et de haut en bas, en prenant le nombre d'images nécessaire. Les diagrammes suivants illustrent la méthode.



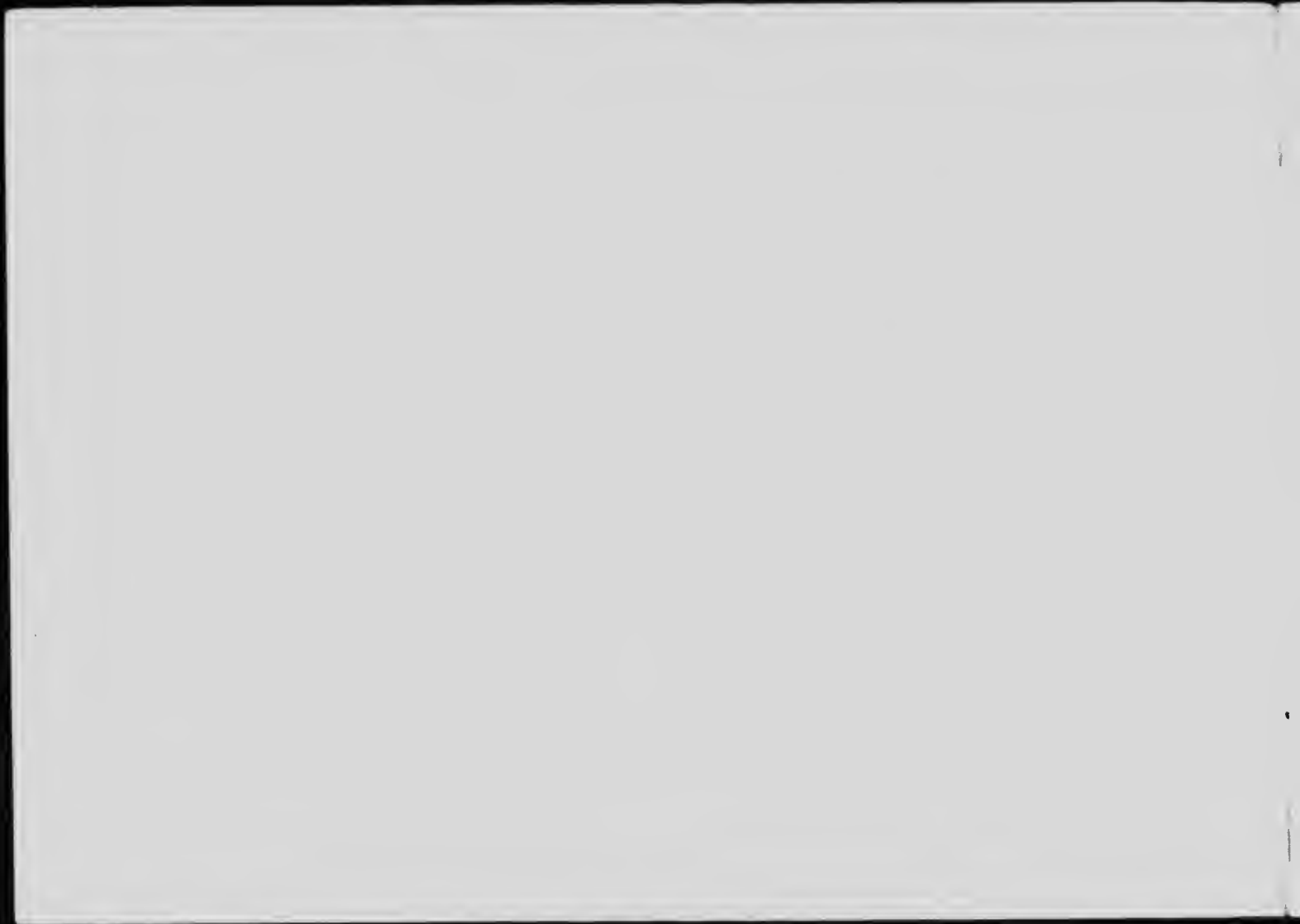
MICROCOPY RESOLUTION TEST CHART
NATIONAL BUREAU OF STANDARDS
STANDARD REFERENCE MATERIAL 1010a
(ANSI and ISO TEST CHART No. 2)

Wycliffe
College
Toronto

Its History
Work and
Purpose



ANGELICAN CHURCH OF CANADA
GENERAL SYNOD, ANGLICAN





WYCLIFFE COLLEGE, TORONTO
(SEE PAGE 74)





Wycliffe College
Toronto



FEDERATED WITH

The University of Toronto

The Corporation of Wycliffe College Toronto

Visitors

The Right Reverend the Bishop of Toronto.
 " " " " " " " "
 " " " " " " " "
 " " " " " " " "
 " " " " " " " "

Huron.
 Montreal.
 Saskatchewan

Trustees

Rev. A. H. Baldwin, M.A., Toronto.
 Rev. H. G. Baldwin, M.A., Toronto.
 His Honor Judge Benson, Port Hope.
 Hon. Edward Blake, LL.D., K.C., Toronto.
 Hon. S. H. Blake, B.A., K.C., Toronto.
 Ven. Archdeacon Boddy, M.A., Toronto.
 Rev. Bernard Bryan, Toronto.
 Stapleton Caldecott, Esq., Toronto.
 A. H. Campbell, Esq., Toronto.
 E. T. Carter, Esq., Toronto.
 R. R. Davis, Esq., Toronto.
 T. D. Delamere, Esq., M.A., K.C., Toronto.
 Lieut.-Col. G. T. Denison, Toronto.
 Rev. T. C. De-Barres, M.A., Toronto.
 W. B. Evans, Esq., Toronto.
 Clarke Gamble, Esq., K.C., Toronto.
 Rev. John Gillespie, Toronto.
 A. W. Grissett, Esq., Toronto.
 Hon. Mr. Justice Gwynne, Ottawa.
 A. Hewson, Esq., Cobourg.
 N. W. Hoyles, Esq., B.A., K.C., Toronto.
 F. C. Jarvis, Esq., Toronto.
 Rev. Septimus Jones, M.A., Toronto.
 J. K. Kerr, Esq., K.C., Toronto.

J. W. Kingston, Esq., Toronto.
 Arthur B. Lee, Esq., Toronto.
 J. Herbert Mason, Esq., Toronto.
 Chas. R. Merritt, Esq., St. Catharines.
 J. Millicamp, Esq., Toronto.
 Thomas Mortimer, Esq., Toronto.
 W. R. Mulock, Esq., K.C., Winnipeg.
 G. Needler, Esq., Millbrook.
 H. O'Brien, Esq., K.C., Toronto.
 Rev. T. R. O'Meara, Toronto.
 Robert Parker, Esq., Toronto.
 E. J. Reynolds, Esq., K.C., Brockville.
 Thomas Ritchie, Esq., Halifax.
 James B. Robertson, Esq., St. John, N.B.
 Rev. Canon Sanson, Toronto.
 Rev. Canon Sheraton, D.D., LL.D., Toronto.
 W. R. Smallpiece, Esq., Toronto.
 T. Sutherland Stayner, Esq., Toronto.
 E. J. Stewart, Esq., Toronto.
 S. Trees, Esq., Toronto.
 Archdale Wilson, Esq., Hamilton, Ont.
 James Woods, Esq., Galt.
 Rev. Professor Wrong, M.A., Toronto.
 F. Wyld, Esq., Toronto.

Chairman of Council

S. W. Hoyles, Esq., B.A., K.C.

Vice-Chairman

F. Herbert Mason, Esq.

Principal

The Rev. J. P. Sheraton, D.D., LL.D.

Faculty

The Principal

Professor of Dogmatic Theology and Exegesis of the New Testament

Rev. Henry J. Cody, M.A.

Professor of Exegesis of the Old Testament and of Ecclesiastical History

Rev. Dyson Hague, M.A.

Professor of Liturgics, Homiletics and Pastoral Theology

Honorary Lecturers

Church History—Rev. John DeSoyres, M.A.

Apologetics—Rev. Professor G. M. Wrong, M.A.

Pastoral Theology—Rev. F. H. DuVernet, B.D.

Honorary Treasurers

Hon. S. H. Blake, B.A., K.C.
Stapleton Caldecott, Esq.

Financial Secretary

Rev. T. R. O'Meara, 407 Parliament Street.

Dean of Residence

Rev. G. A. Rix.

Honorary Auditors

J. E. Berkeley Smith, Esq.
Samuel Trees, Esq.

Representatives on the Senate of the University of Toronto

The Principal.

Hon. S. H. Blake, B.A., K.C.

Registrar

Herbert Mortimer, Esq., 60 Confederation Life Building. Telephone 2167

Council

His Honor Judge Benson,
Hon. S. H. Blake, B.A., K.C.
Ven. Archdeacon Boddy, M.A.
Rev. Bernard Bryan,
Stapleton Caldecott, Esq.
A. H. Campbell, Esq.
Rev. H. J. Cody, M.A.
*Rev. J. O. Crisp, B.A.
R. R. Davis, Esq.
Rev. T. C. DesBarres, M.A.
W. B. Evans, Esq.

A. W. Grasett, Esq.
Rev. Dyson Hague, M.A.
N. W. Hoyles, Esq., B.A., K.C.
*Rev. C. J. James, M.A.
F. C. Jarvis, Esq.
Rev. Septimus Jones, M.A.
J. K. Kerr, Esq., K.C.
F. W. Kingstone, Esq.
*Rev. G. A. Kuhring.
J. Herbert Mason, Esq.
T. R. Merritt, Esq.

R. Millichamp, Esq.
Thomas Mortimer, Esq.
H. O'Brien, Esq., K.C.
Rev. T. R. O'Meara.
Robert Parker, Esq.
Rev. Canon Sanson.
Rev. Canon Sheraton, D.D., LL.D.
W. R. Smallpiece, Esq.
F. J. Stewart, Esq.
Archdale Wilson, Esq.
Rev. Professor G. M. Wrong, M.A.

* Elected by the Alumni Association as their representatives for the year



N. W. HOYLES, ESQ., K.C.
CHAIRMAN OF THE COUNCIL.



J. HERBERT MASON, ESQ.
VICE-CHAIRMAN.



REV. CANON SHERATON, D.D., LL.D.
PRINCIPAL.



ABOUT twenty-five years ago it was felt by many earnest-minded clergymen and laymen that there was great need in the centre of our Country for a Theological College, the object of which should be to send out men to the work of the ministry throughout the whole country who should be soundly Evangelical in their Churchmanship, and thoroughly in touch with the people of our Church. After months of conference, thought and prayer, the work now known as Wycliffe College was commenced in Toronto. The promoters of this enterprise found themselves confronted with very many difficulties and the strongest opposition. They had the firm conviction, however, that if the Church of England in our rapidly growing Dominion was to continue to hold its rightful place in the confidence of the people, and the simple truths of God's Word were to be preached from her pulpits, it could only be done by having a College in full sympathy with Evangelical Truth to which men from all parts of the country could come to be trained for the ministry, and to which parishes and missions could look for the right kind of ministers of the gospel. With, therefore, a sincere desire to accomplish this and simple faith in God, the work was commenced.

Principles

Wycliffe College has always been carried on upon certain great principles of revealed truth which have given to it any success and power that it has attained. The following may be mentioned as those fundamentally taught :

- 1.—The absolute supremacy and sufficiency of God's Word, the only rule of Faith and Practice.
- 2.—Justification, by faith only, through the merits and death of our Saviour Jesus Christ, and not through our own works or deservings.
- 3.—The sole and exclusive priesthood of Jesus Christ, the only mediator between God and man.
- 4.—The Holy Catholic Church, " the blessed company of all faithful people," made up of all who love and obey our Lord Jesus Christ.
- 5.—The ministry, not an order of sacrificing and mediating priests, but men called by Christ and set apart by lawful authority to preach Christ's gospel, and to be teachers and leaders of Christ's people in all good works.
- 6.—Episcopacy, not necessary to the being of the Church, as though a Church could not exist without it, but an ancient and scriptural form of Church government, highly conducive, where rightly administered, to the well-being of the Church.
- 7.—The sacraments, signs and seals of the Covenant of Salvation, by which the blessings of salvation are symbolized and attested, made over to us on condition of faith and repentance.
- 8.—The real presence of Jesus Christ, by faith only, in the hearts of all believers who worthily receive the bread and wine in the Holy Communion : in opposition to the figment of His presence, corporally or spiritually, on the communion table, in or under the form of bread and wine, after the consecration of the elements.



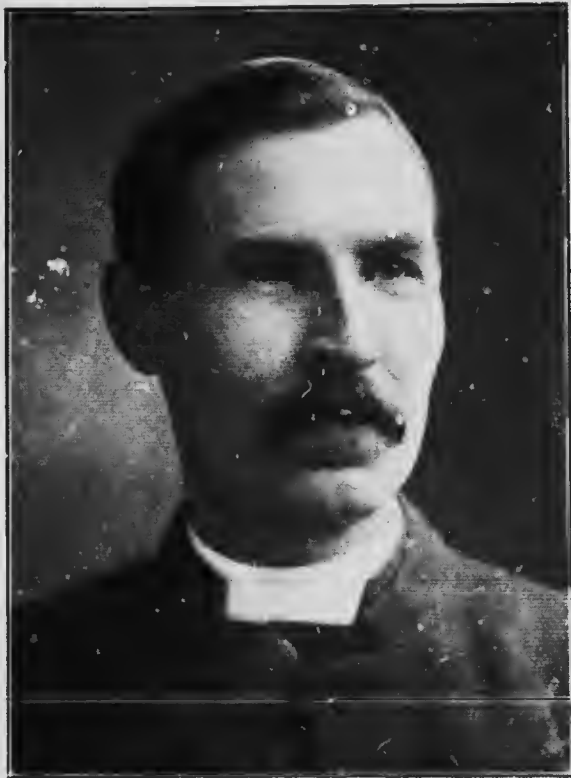
STAPLETON CALDECOTT, ESQ
HON. TREASURER



HON. S. H. BLAKE, K.C.
HON. TREASURER.



REV. T. R. O'MEARA.
FINANCIAL SECRETARY.



REV. H. J. CODY, M.A.
PROFESSOR OF HISTORY AND OLD TESTAMENT EXEGESIS.



REV. DYSON HAGUE, M.A.
PROFESSOR OF HOMILETICS AND PASTORAL THEOLOGY

Added to the great basal principles above mentioned in a very marked way the missionary spirit and conviction have been fostered among the students and have borne fruit in a number of consecrated lives being devoted from among the graduates to the great missionary work of the Church of Christ. It was by one of the graduates of our College going out to Japan that the movement was commenced, which has since developed into the present successful and promising Canadian Church Missionary Association. Through the liberality of the family of the late Robert Baldwin, a missionary bursary has been established for the perpetual education of a student for the foreign missionary field. The late Mrs. Robert Phelps has also endowed a missionary bursary, the interest of which, whenever possible, is to go to the support of a student of the College whose object shall be to preach the Gospel of Christ among the Jews. We attribute much of the success and blessing granted to the work of Wycliffe College to the reflex influence of this missionary spirit among our graduates and students.

The work that has already been done

The friends of Wycliffe are beginning now very fairly to ask what has been actually accomplished in attaining the objects which the College had before it at its inception.

The direct result of the work may be summed up in the statement that **one hundred and eighteen men** have been educated and sent out to the work of the ministry. These have been scattered very widely as the following statement will show at a glance :

I. In the Foreign Mission Field :

JAPAN	-	-	-	-	-	-	-	-	5
CHINA	-	-	-	-	-	-	-	-	3
S. AMERICA	-	-	-	-	-	-	-	-	1
PALESTINE	-	-	-	-	-	-	-	-	1
JAMAICA	-	-	-	-	-	-	-	-	1

II. In the Home Mission Field:

DIOCESE OF MACKENZIE RIVER	-	-	-	-	2
" " ATHABASCA	-	-	-	-	1
" " MOOSONEE	-	-	-	-	1
" " RUPERT'S LAND	-	-	-	-	7
" " ALGOMA	-	-	-	-	3

III. In the Eastern Dioceses of Canada:

DIOCESE OF TORONTO	-	-	-	-	30
" " HURON	-	-	-	-	15
" " NIAGARA	-	-	-	-	10
" " NOVA SCOTIA	-	-	-	-	10
" " FREDERICTON	-	-	-	-	8
" " ONTARIO	-	-	-	-	2
" " QUEBEC	-	-	-	-	1
" " MONTREAL	-	-	-	-	1

Five have gone to the United States, and two are at work in England, while three others have been removed by death. It is only right to call the attention of our friends to the fact that of the eleven graduates who are at present in the United States a number are there, not on account of choice, but because of ill-health.



A GROUP OF STUDENTS 1901



THE COLLEGE CHAPEL.

Many other results, which although less apparent, are none the less important and beneficial to the cause of Evangelical Truth have been achieved by the College. A Canadian branch of the great Church Missionary Society of England has been established which has already sent out upwards of 20 devoted labourers to the mission field in the Northwest and foreign lands, and provides for Evangelical Churchmen in Canada a means of carrying out the last command of Christ in a manner in which they can have the utmost confidence. Two splendidly equipped schools have been founded, Ridley College in St. Catharines for boys, and Havergal College in Toronto for girls. Both of these, by God's blessing, have already had wonderful success granted to them and give golden promise of great usefulness in the future. Our Deaconess and Missionary Training Home, Toronto, is the only institution of the kind in connection with the Church of England in Canada. Many devoted young women have already been trained and are now engaged in the Master's work at home and abroad, while seven others are now being prepared for their life work. The graduates of the College have also been able to supply a felt need in different parts of the country in the successful publication of the little monthly paper, *Parish and Home*, which has had an encouraging circulation. All these undertakings have, under God, been the direct outcome and result of the existence and work of Wycliffe College.

The Needs of the College

The Council of Wycliffe College are persuaded that there are a very large number of friends, members of the Church of England in Canada, who are most anxious to know the present position and needs of the College in order that they may know best how to help forward so vitally important a work. They would therefore, mention the following as these which present themselves as of most importance.

Prayer

Wycliffe College from the very commencement has been the result of prayer. The Council of the College are persuaded that there is no way in which either the staff and students within, or the graduates and friends of the College outside, can help forward this work better than by making it a matter of most earnest and continuous prayer to Almighty God. They are most anxious that wherever there are those at all interested in the work, from that place individual and united intercession should be sent to our Heavenly Father that His hand may control and supply all the need of the College.

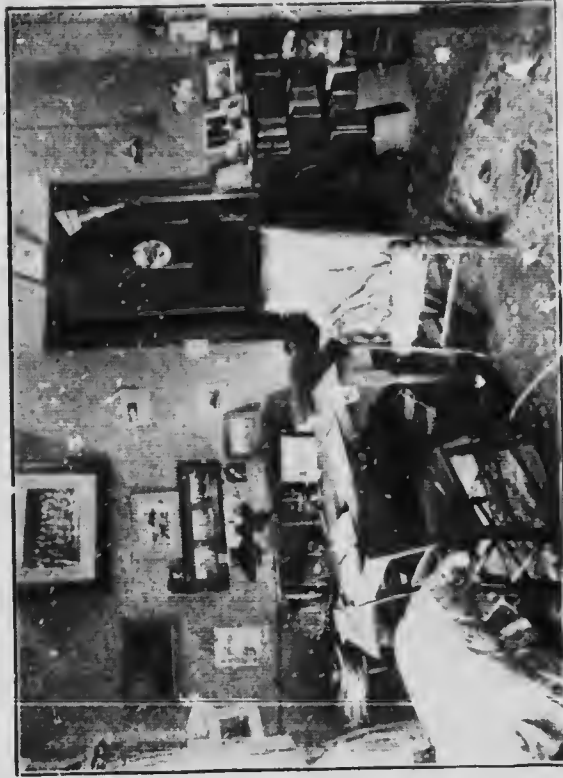
There is held each month throughout the autumn and winter a gathering in the College of friends of the work for united intercession. Those who have been able to gather at these meetings have realized in a very special manner the presence of God and His provision in answer to their petitions.

It has, too, been the object of the staff to encourage the spirit of prayer among the students. Different gatherings are held from time to time. Students also are in the habit of meeting together two or three at a time, and praying for the College and for their fellow-students.

Above every other need of Wycliffe College at this time, the Council would urge the necessity of regular and systematic prayer on behalf of the cause for which Wycliffe stands.

Men

The primary object of the existence of Wycliffe has ever been to educate and send out living agents to preach the gospel in the different parishes and missions throughout the country. The primary need, therefore, of the College has been, and is at the present time, **Men**—earnest, simple, devoted men who know God and are desirous to tell of Him to others.



A STUDENT'S ROOM.



THE DINING HALL.



THE COLLEGE LIBRARY.



A LECTURE ROOM.

It has been most noticeable of late years how very few have been offering themselves for the work of the ministry compared to those who have been crowding into other callings of life. There is a great need at the present time of men to be trained for the ministry of the Church. Those offering themselves should be men of strong physical health, able to endure hardship, willing and anxious to do continuous work, men of common sense, who are able to understand and get on well with other men. Above all, however, those thinking of offering themselves as students at the College must be men who themselves know Christ as a personal Saviour and believe that He is calling them to this high and noble work.

By reference to the College Calendar, which will gladly be sent to anyone applying for it, it will be seen that while in all ordinary cases students of the College before entering must be able to pass the matriculation examination of Toronto University, or its equivalent, yet the Council is always prepared to consider special cases on their own merits. Those thinking of offering themselves to be prepared for the ministry should in the first place write to the Registrar, and he will most gladly give all detailed information as to the necessary mode of procedure.

Means

Wycliffe College has from its commencement been supported by the voluntary offerings of the people of our Church who have felt the importance of this distinctive work. It has no large endowments, funds, or claims on general Church funds to which to look for its support.

Those who have helped the College in the past and are now bearing the financial burden of the work have done so in various ways.

1. Some have given directly to a permanent endowment fund, the interest of which only is used. This fund has now reached about \$100,000. Portions of this permanent fund have been

so given by the donors that if the distinctively evangelical character of the College should ever change, their money would revert to another institution.

2. Other friends have endowed scholarships by giving a large sum, the interest of which is used for the support of a student in his preparation for the ministry.

3. A number have given money and books for the establishment and increase of the Library.

4. By far, however, the larger number who have contributed to the support of Wycliffe College have given in voluntary annual amounts varying from year to year according to their ability to help. We have now over one thousand persons contributing more or less regularly to the support of the College. Thus it will be seen that the personal interest in Wycliffe is very wide-spread in its character.

In addition to the present endowment fund, the College is pressingly in need of the sum of \$50,000, for which amount we are making at the present time a strong appeal. A substantial beginning has been made towards obtaining this amount, and we earnestly ask our friends to contribute the remainder.

The maintenance fund, which now amounts to \$6,000 a year, must be materially increased if the work of the College is not to be seriously hindered. All amounts will be most thankfully received and promptly acknowledged by the Treasurers.

The Library

The work commenced with a very good promise of a large and useful library of theological books—a number of earnest friends contributed largely in this direction, and there are at the present time 8,000 volumes upon the shelves. There has been, however, no addition at all of any account to the Library during the past ten years. The Council of the College are greatly

concerned about this matter. As a man who does not keep up with the times is sure to lose power, so a College which is not furnished with the latest theological and scientific books cannot possibly hope to continue up-to-date. We are most anxious to add to the Library with as little delay as possible, and will be very glad to receive either useful, modern books or money with which to purchase them.

Building

The new College Building, completed and furnished in October, 1891, at a cost of \$75,000 is very conveniently and healthily situated in open ground on the edge of the Queen's Park, upon Hoskin Avenue. It is built of stone and pressed brick, in a chaste collegiate style and in the form of an L, the main building running 175 feet from east to west, and the east wing extending 142 feet from north to south.

It contains rooms for forty-four students, lecture-rooms, library, chapel, dining hall, house-keeper's quarters, and residences for the Principal and the Dean, and is in every way, with the exception of a Convocation Hall, well-equipped for the work.

The rooms of the students are suitably furnished, and every provision has been made for their health and comfort. The University Gymnasium, erected within fifty yards of the College, is open to the students upon the payment of a small fee.

Friends of Wycliffe will always be made most heartily welcome at the College, and are earnestly invited to make a personal inspection and see the work for themselves. Those from the country calling at the College should ask for either the Principal or the Dean, who will most gladly make them welcome and show them through the building.

What, however, is urgently required now to complete our present building is the erection of

an Assembly Hall for the holding of public meetings in connection with our work. The lecture rooms have been used for this purpose in the past, but are most inadequate in many ways. A hall such as would be required, if erected in keeping with the rest of the structure, would cost about \$10,000. For the erection of this we now make a very earnest appeal.

Conclusion

In these modern days of rapid development and independent thought, nothing can be of more importance than the rightful and thorough education of students for the Christian ministry. A parish may have its church buildings and all its parochial machinery perfectly organized, but if the clergyman is not thoroughly trained in the great principles of revealed truth, in hearty sympathy with his people and enjoying their entire confidence, all else can be of little practical effect. The support, therefore, by sympathy, prayer and liberal offerings, of such a work as Wycliffe College must always be of primary importance in the development of the Church and the advancement of the kingdom of Christ among men. Demands much in excess of what can be possibly supplied with our present revenues are made by many parishes and missions, earnestly desiring to have for their clergymen some of our graduates. The Council feel that this limitation of a work like Wycliffe College is very unfortunate at the present formative time in the history of our Church. They, therefore, appeal most earnestly to all friends to do their utmost in supporting a work that has borne in such a marked manner the seal of God's approval. They are convinced that if the College is placed by its friends in the position of being able to take advantage of the opportunity which is now ours, it will mean untold blessing and strength for the great future which is before our country and our Church.

“ Arise ; for this matter belongeth unto thee — be of good courage and do it.” — Ezra 10 : 4.



THE BRYANT PRESS
TORONTO

