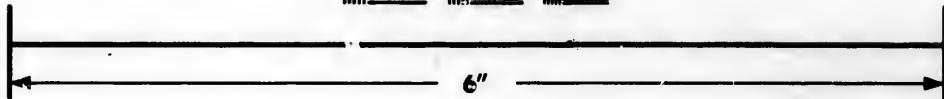
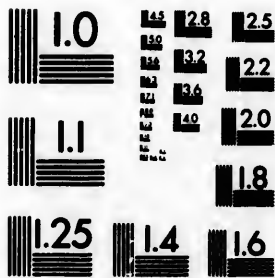


**IMAGE EVALUATION
TEST TARGET (MT-3)**



**Photographic
Sciences
Corporation**

23 WEST MAIN STREET
WEBSTER, N.Y. 14580
(716) 872-4503

**CIHM/ICMH
Microfiche
Series.**

**CIHM/ICMH
Collection de
microfiches.**



Canadian Institute for Historical Microreproductions / Institut canadien de microreproductions historiques

© 1984

Technical and Bibliographic Notes/Notes techniques et bibliographiques

The Institute has attempted to obtain the best original copy available for filming. Features of this copy which may be bibliographically unique, which may alter any of the images in the reproduction, or which may significantly change the usual method of filming, are checked below.

L'institut a microfilmé le meilleur exemplaire qu'il lui a été possible de se procurer. Les détails de cet exemplaire qui sont peut-être uniques du point de vue bibliographique, qui peuvent modifier une image reproduite, ou qui peuvent exiger une modification dans la méthode normale de filmage sont indiqués ci-dessous.

- Coloured covers/
Couverture de couleur
- Covers damaged/
Couverture endommagée
- Covers restored and/or laminated/
Couverture restaurée et/ou pelliculée
- Cover title missing/
Le titre de couverture manque
- Coloured maps/
Cartes géographiques en couleur
- Coloured ink (i.e. other than blue or black)/
Encre de couleur (i.e. autre que bleue ou noire)
- Coloured plates and/or illustrations/
Planches et/ou illustrations en couleur
- Bound with other material/
Relié avec d'autres documents
- Tight binding may cause shadows or distortion
along interior margin/
La reliure serrée peut causer de l'ombre ou de la
distortion le long de la marge intérieure
- Blank leaves added during restoration may
appear within the text. Whenever possible, these
have been omitted from filming/
Il se peut que certaines pages blanches ajoutées
lors d'une restauration apparaissent dans le texte,
mais, lorsque cela était possible, ces pages n'ont
pas été filmées.
- Additional comments:/
Commentaires supplémentaires:

- Coloured pages/
Pages de couleur
- Pages damaged/
Pages endommagées
- Pages restored and/or laminated/
Pages restaurées et/ou pelliculées
- Pages discoloured, stained or foxed/
Pages décolorées, tachetées ou piquées
- Pages detached/
Pages détachées
- Showthrough/
Transparence
- Quality of print varies/
Qualité inégale de l'impression
- Includes supplementary material/
Comprend du matériel supplémentaire
- Only edition available/
Seule édition disponible
- Pages wholly or partially obscured by errata
slips, tissues, etc., have been refilmed to
ensure the best possible image/
Les pages totalement ou partiellement
obscurcies par un feuillet d'errata, une pelure,
etc., ont été filmées à nouveau de façon à
obtenir la meilleure image possible.

This item is filmed at the reduction ratio checked below/
Ce document est filmé au taux de réduction indiqué ci-dessous.

| | | | | | |
|--------------------------|--------------------------|--------------------------|-------------------------------------|--------------------------|--------------------------|
| 10X | 14X | 18X | 22X | 26X | 30X |
| <input type="checkbox"/> | <input type="checkbox"/> | <input type="checkbox"/> | <input checked="" type="checkbox"/> | <input type="checkbox"/> | <input type="checkbox"/> |
| 12X | 16X | 20X | 24X | 28X | 32X |

The to t
The pos
of the
film
Orig
beg
the
sion
othe
first
sion
or II
The
shal
TINU
whic
Map
diffe
entir
begi
right
requ
meth

The copy filmed here has been reproduced thanks to the generosity of:

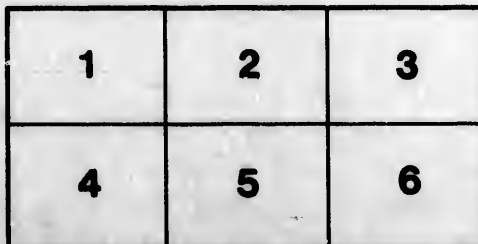
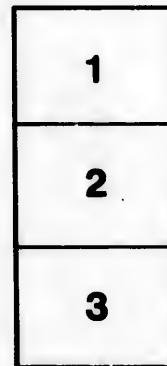
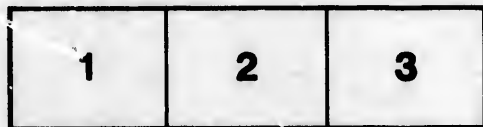
Douglas Library
Queen's University

The images appearing here are the best quality possible considering the condition and legibility of the original copy and in keeping with the filming contract specifications.

Original copies in printed paper covers are filmed beginning with the front cover and ending on the last page with a printed or illustrated impression, or the back cover when appropriate. All other original copies are filmed beginning on the first page with a printed or illustrated impression, and ending on the last page with a printed or illustrated impression.

The last recorded frame on each microfiche shall contain the symbol \rightarrow (meaning "CONTINUED"), or the symbol ∇ (meaning "END"), whichever applies.

Maps, plates, charts, etc., may be filmed at different reduction ratios. Those too large to be entirely included in one exposure are filmed beginning in the upper left hand corner, left to right and top to bottom, as many frames as required. The following diagrams illustrate the method:



L'exemplaire filmé fut reproduit grâce à la générosité de:

Douglas Library
Queen's University

Les images suivantes ont été reproduites avec le plus grand soin, compte tenu de la condition et de la netteté de l'exemplaire filmé, et en conformité avec les conditions du contrat de filmage.

Les exemplaires originaux dont la couverture en papier est imprimée sont filmés en commençant par le premier plat et en terminant soit par la dernière page qui comporte une empreinte d'impression ou d'illustration, soit par le second plat, selon le cas. Tous les autres exemplaires originaux sont filmés en commençant par la première page qui comporte une empreinte d'impression ou d'illustration et en terminant par la dernière page qui comporte une telle empreinte.

Un des symboles suivants apparaît sur la dernière image de chaque microfiche, selon le cas: le symbole \rightarrow signifie "A SUIVRE", le symbole ∇ signifie "FIN".

Les cartes, planches, tableaux, etc., peuvent être filmés à des taux de réduction différents. Lorsque le document est trop grand pour être reproduit en un seul cliché, il est filmé à partir de l'angle supérieur gauche, de gauche à droite, et de haut en bas, en prenant le nombre d'images nécessaire. Les diagrammes suivants illustrent la méthode.

•
détails
s du
modifier
r une
image

errata
to

pelure,
n à



ILLUSTRATED EDITION.

THE
HEATHEN CHINEE



BY F. BRET HARTE.

TORONTO:
THE CANADIAN NEWS AND PUBLISHING CO.
1871.

PRICE FIFTEEN CENTS.

Ready Tuesday, March 14th,
Cheap American Edition

GINX'S BABY.

The most humorous Book of the day.

Paper 25 cts.: Cloth 50 cts.

The Canadian News and Publishing Co.,
Agents for the Publishers.

T H E
Heathen Chinese:

BY

F. BRET. HARTE.



TORONTO:
THE CANADIAN NEWS AND PUBLISHING CO.
1871.

FIDDINGTON,
Bookseller
Toronto.

LP
PS 1831
H 37
1871 E

Dec 12

16.00

Mont. Bk. Acct. Cat 42/193

11-12-1911

Side c. Bks. Cat 42/193

NOW READY!

Mark Twain's Memoranda.

144 pages, 16mo.

Paper 50 cts.; Cloth 75 cts.

The Canadian News and Publishing Co.,
Publishers, Toronto.

HIST/STACKS

1123 + 1112

Dec 72

16.00

Mont. Bk. Acct. Cat 42/193

11- Dec 72

Spec. Bks Cat 42/181

HIST/STACKS

MS+UP

The Heathen Chinee:

By F. BRET. HARTE.

1.

When I wish to remark—
And my language is plain—
That for ways that are dark,
And for tricks that are vain,
The heathen Chinee is peculiar,
Which the same I would rise to explain.

2.

Ah Sin was his name ;
And I shall not deny,
In regard to the same,
What the name might imply.
But his smile it was pensive and childlike,
As I frequent remarked to Bill Nye.

1041938



It was August the third,
And quite soft was the skies ;
Which it might be inferred
That Ah Sin was likewise ;
Yet he played that same day upon William
And me in a way I despise.



Which we had a small game,
And Ah Sin took a hand ;
It was Euchre. The same
He did not understand ;
But he smiled as he sat by the table,
With the smile that was childlike and bland.



Yet the Cards were stocked
In a way that I grieve,
And my feelings were shocked
At the state of Nye's sleeve,
Which was stuffed full of aces and bowers,
And the same with intent to deceive.

But the hands that were played
By that heathen Chinese,
And the points that he made



Were quite frightful to see—
Till at last he put down a right bower,
Which the same Nye had dealt unto me.



Then I looked up at Nye,
And he gazed upon me ;
And he rose with a sigh,
And said, " Can this be ?
We are ruined by Chinese cheap labor"—
And he went for that heathen Chinee.



In the scene that ensued
I did not take a hand,
But the floor it was strewed
Like the leaves on the strand
With the cards that Ah Sin had been hiding
In the game "he did not understand."



In his sleeves, which were long,
He had twenty-four packs—
Which was coming it strong,
Yet I state but the facts ;
And we found on his nails, which were taper,
What is frequent in tapers—that's wax.



Which is why I remark,
And my language is plain,
That for ways that are dark,
And for tricks that are vain,
The heathen Chinee is peculiar—
Which the same I am free to maintain.

NOW READY!

Bret. Hart's Complete Works.

Price 50 cts., paper.

For sale by all Booksellers.

Ready, Tuesday, 14th March,
MARK TWAIN'S
AUTOBIOGRAPHY and FIRST ROMANCE,
with
13 Beautiful and Humorous
Illustrations.

Paper, 25 cents ; Cloth, 50 cents.

The Canadian News and Publishing Co.,
Publishers, Toronto.

A New Illustrated Monthly.

The
WEDDING BELLS:

A Magazine for the Married and Single.

EDWIN J. BRETT, Publisher,
London, England.

Price, Monthly, 25c., with colored Fashion
Plates.

The Canadian News and Publishing Co.,
Authorized Agents,
Toronto.

