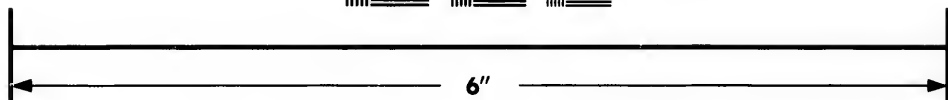
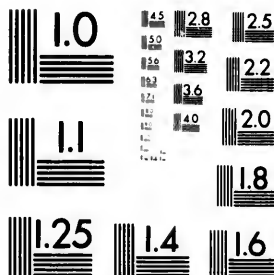


**IMAGE EVALUATION
TEST TARGET (MT-3)**



**Photographic
Sciences
Corporation**

23 WEST MAIN STREET
WEBSTER, N.Y. 14580
(716) 872-4503



**CIHM/ICMH
Microfiche
Series.**

**CIHM/ICMH
Collection de
microfiches.**



Canadian Institute for Historical Microreproductions / Institut canadien de microreproductions historiques



© 1981

Technical and Bibliographic Notes/Notes techniques et bibliographiques

The Institute has attempted to obtain the best original copy available for filming. Features of this copy which may be bibliographically unique, which may alter any of the images in the reproduction, or which may significantly change the usual method of filming, are checked below.

L'Institut a microfilmé le meilleur exemplaire qu'il lui a été possible de se procurer. Les détails de cet exemplaire qui sont peut-être uniques du point de vue bibliographique, qui peuvent modifier une image reproduite, ou qui peuvent exiger une modification dans la méthode normale de filmage sont indiqués ci-dessous.

- Coloured covers/
Couverture de couleur
- Covers damaged/
Couverture endommagée
- Covers restored and/or laminated/
Couverture restaurée et/ou pelliculée
- Cover title missing/
Le titre de couverture manque
- Coloured maps/
Cartes géographiques en couleur
- Coloured ink (i.e. other than blue or black)/
Encre de couleur (i.e. autre que bleue ou noire)
- Coloured plates and/or illustrations/
Planches et/ou illustrations en couleur
- Bound with other material/
Relié avec d'autres documents
- Tight binding may cause shadows or distortion
along interior margin/
La reliure serrée peut causer de l'ombre ou de la
distortion le long de la marge intérieure
- Blank leaves added during restoration may
appear within the text. Whenever possible, these
have been omitted from filming/
Il se peut que certaines pages blanches ajoutées
lors d'une restauration apparaissent dans le texte,
mais, lorsque cela était possible, ces pages n'ont
pas été filmées.
- Additional comments:/
Commentaires supplémentaires:

- Coloured pages/
Pages de couleur
- Pages damaged/
Pages endommagées
- Pages restored and/or laminated/
Pages restaurées et/ou pelliculées
- Pages discoloured, stained or foxed/
Pages décolorées, tachetées ou piquées
- Pages detached/
Pages détachées
- Showthrough/
Transparence
- Quality of print varies/
Qualité inégale de l'impression
- Includes supplementary material/
Comprend du matériel supplémentaire
- Only edition available/
Seule édition disponible
- Pages wholly or partially obscured by errata
slips, tissues, etc., have been refilmed to
ensure the best possible image/
Les pages totalement ou partiellement
obscurcies par un feuillet d'errata, une pelure,
etc., ont été filmées à nouveau de façon à
obtenir la meilleure image possible.

This item is filmed at the reduction ratio checked below/
Ce document est filmé au taux de réduction indiqué ci-dessous.

10X	14X	18X	22X	26X	30X
<input type="checkbox"/>	<input type="checkbox"/>	<input type="checkbox"/>	<input type="checkbox"/>	<input checked="" type="checkbox"/>	<input type="checkbox"/>
12X	16X	20X	24X	28X	32X

The copy filmed here has been reproduced thanks to the generosity of:

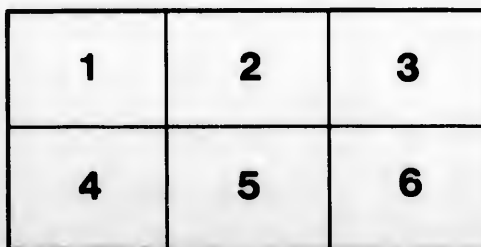
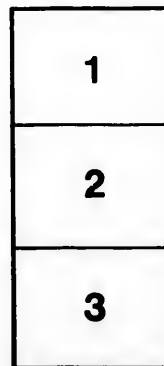
Douglas Library
Queen's University

The images appearing here are the best quality possible considering the condition and legibility of the original copy and in keeping with the filming contract specifications.

Original copies in printed paper covers are filmed beginning with the front cover and ending on the last page with a printed or illustrated impression, or the back cover when appropriate. All other original copies are filmed beginning on the first page with a printed or illustrated impression, and ending on the last page with a printed or illustrated impression.

The last recorded frame on each microfiche shall contain the symbol \rightarrow (meaning "CONTINUED"), or the symbol ∇ (meaning "END"), whichever applies.

Maps, plates, charts, etc., may be filmed at different reduction ratios. Those too large to be entirely included in one exposure are filmed beginning in the upper left hand corner, left to right and top to bottom, as many frames as required. The following diagrams illustrate the method:



L'exemplaire filmé fut reproduit grâce à la générosité de:

Douglas Library
Queen's University

Les images suivantes ont été reproduites avec le plus grand soin, compte tenu de la condition et de la netteté de l'exemplaire filmé, et en conformité avec les conditions du contrat de filmage.

Les exemplaires originaux dont la couverture en papier est imprimée sont filmés en commençant par le premier plat et en terminant soit par la dernière page qui comporte une empreinte d'impression ou d'illustration, soit par le second plat, selon le cas. Tous les autres exemplaires originaux sont filmés en commençant par la première page qui comporte une empreinte d'impression ou d'illustration et en terminant par la dernière page qui comporte une telle empreinte.

Un des symboles suivants apparaîtra sur la dernière image de chaque microfiche, selon le cas: le symbole \rightarrow signifie "A SUIVRE", le symbole ∇ signifie "FIN".

Les cartes, planches, tableaux, etc., peuvent être filmés à des taux de réduction différents. Lorsque le document est trop grand pour être reproduit en un seul cliché, il est filmé à partir de l'angle supérieur gauche, de gauche à droite, et de haut en bas, en prenant le nombre d'images nécessaire. Les diagrammes suivants illustrent la méthode.

The EDITH and LORNE PIERCE
COLLECTION *of* CANADIANA



Queen's University at Kingston

H. A. Brown
Quebec - 1880

F5520 5.-

QUEBEC AND VICINITY

QUEBEC CITY AND ITS HISTORIC AND SCENIC SURROUNDINGS
INCLUDING MONTMORENCI, THE FAMOUS SHRINE OF STE.
ANNE DE BEAUPRE, AND TYPICAL SCENES DOWN
THE ST. LAWRENCE AND UP THE
SAGUENAY RIVER



PUBLISHED BY
THE JAMES BAYNE COMPANY
GRAND RAPIDS, MICH., U. S. A.

PUBLISHERS OF ILLUSTRATED GUIDES AND SOUVENIR BOOKS OF MONTREAL,
THOUSAND ISLANDS, ADIRONDACKS, FULTON CHAIN,
SALT LAKE CITY AND OTHERS

210
F5012
m.d
G315

CANADA was discovered in 1492, by Jacques Cartier. In 1608, Champlain arrived and founded the City of Quebec. There is not a spot in all America more lavishly endowed by nature with beauty and grandeur of its surroundings or richer in historic treasure than the quaint old walled City of Quebec—the "Gibraltar of America," and the sentinel at the portals of the great inland waters of the continent. For picturesqueness it is not surpassed even by far-famed Naples. Quebec is not a prosaic modern town, it is a city to be once seen then forever remembered with delightful recollections. Every stone in its walls has a history and every spot of ground is sanctified by undying memories of great events, battles fought, victories won, defeat and death heroically sustained. Almost every building in its antique and tortuous streets has a story to tell, and hardly a foundation upturned without discovering some implement of bloody war, used either by savagery or civilization.

It is haunted by the spirit of the past, dead memories of departed glory arise at every turn and, like spirits, present themselves to those who seek after them. In and out among the narrow streets, crooked alleys and high cliffs still flit the shadows of great men who have left such indelible marks upon the history of the new world by their heroism, zeal and courage.

The visitor must be impressed with respect, if not admiration, when he contemplates the sacrifices made, dangers and self-denial endured for the cause of civilization and their country by such men as Jacques Cartier, the discoverer of Canada; Champlain, the founder of Quebec; Laval Frontenac defying Phipps, the English admiral, when he demanded the surrender of the city; the noble Montcalm; victorious Wolfe, denied the participation in the glories of his victory by the summons of death with the announcement of his conquest; General Montgomery and several others whose names are forever connected, not only with the history of Canada, but all America. Quebec differs from any other American City; it has every characteristic of an European town. It is the ancient capitol of the "New France," a little patch of medieval Europe transplanted upon a distant shore. To visit Quebec is the next thing to a trip to Europe, but your trip would not be complete without making the tour by interurban cars to the Falls and Park at Montmorenci and on a little further to the famous village and church of Ste Anne de Beaupre. This is the spot to which pilgrims from all parts of America come to secure the healing influences that have surrounded this place since 1662. The number of pilgrims seems to be increasing each year, as the tourists will find in spending a few hours among the many religious edifices here located.

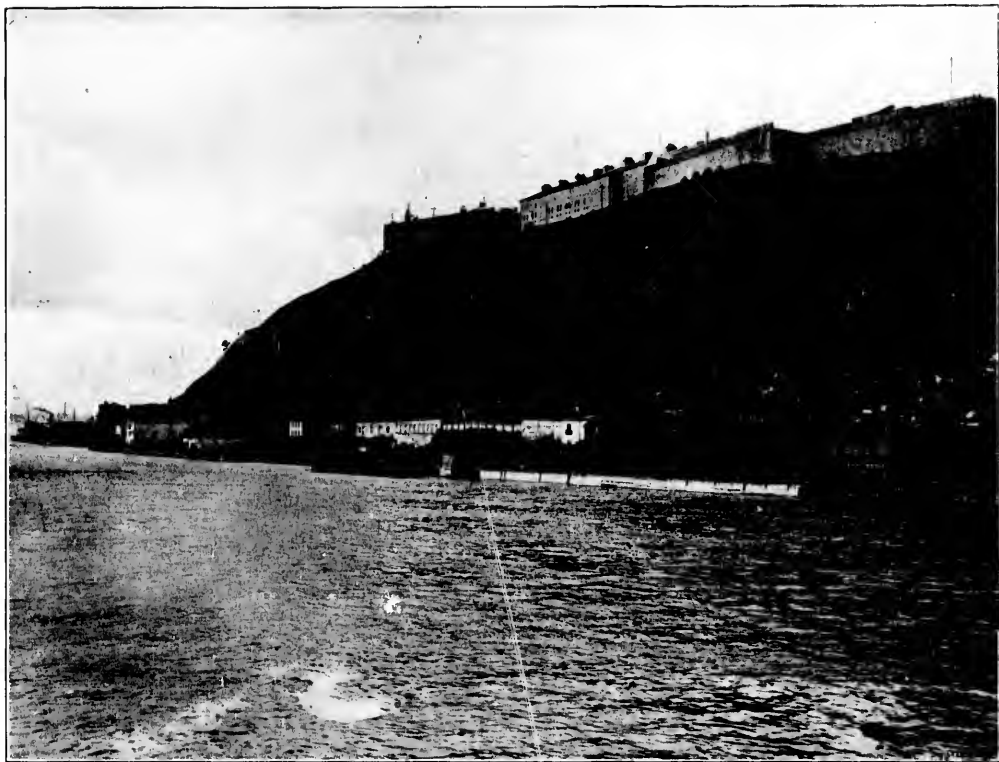
Another trip that is intensely interesting is the tour of Lake St. John and the Saguenay River, which may be reached from Quebec either by boat or by rail. Perhaps the ideal way is to leave Quebec in the morning by rail and return by boat. The scenic beauty of this trip is rarely if ever surpassed by any trip on the Continent.

1761
JP



Dufferin Terrace, the Citadel and Chateau Frontenac in the distance, taken from one of the steamers

This is the view which the tourist first sees as he approaches the city from the terminal of the Grand Trunk Ry. System on the opposite side of the river from the city, which is at Point Levis. The panoramic view is spectacular in the extreme.



The Citadel

As seen from the deck of one of the R. & O. Steamers, just before landing. This view makes it easy to discern why the locality is named "The Gibraltar of America". From this elevation of several hundred feet the St. Lawrence River and the country across the river can be seen for miles.

Quebec from Levis



Levis from Quebec

Levis is situated upon a very high elevation of ground directly opposite Quebec. It was from these heights the British bombarded the city of Quebec in 1759. The Grand Trunk and Intercolonial Railways both have their stations at the docks in the city of Levis, from which Quebec is reached by boat in a few minutes.



Levis taken from Quebec

Showing the C. P. R. Ocean Liner "Empress" approaching the Quebec dock.



Entrance to Court Yard of Chateau Frontenac from Dufferin Terrace

showing the building before its last addition was erected. The grandest hotel in Canada, and in many respects has no equal on the continent. It was built by the Canadian Pacific Railroad, at a cost of over one million dollars, and is operated by them. It is located upon Dufferin Terrace, just below the citadel, and commands a view both up and down the river as far as the eye can see and across the river to Lévis. No grander site for a hotel could be found on the continent. The beauty of the scenery cannot be described. It is a spot of great historic note, having been the site of the residence of many of the governors of Canada. A whole volume could be written describing the beauties, comforts and advantages of this princely chateau; we can only give it a passing notice. The interior arrangements, the furnishings, the cuisine and menu compare favorably with the location and exterior.



Promenade on Dufferin Terrace

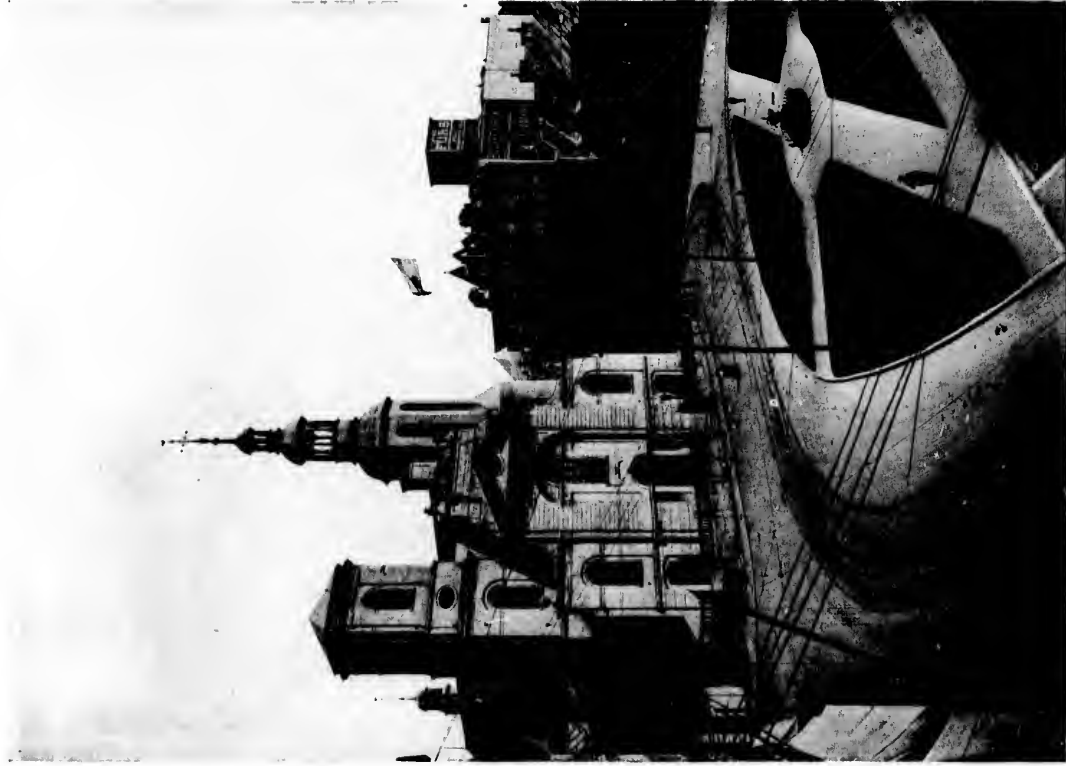
Formerly called Durham Terrace, is the pride of the people of Quebec. It is the finest promenade on the continent. It extends along the brow of Cape Diamond for over one-fourth of a mile under the shadow of the citadel and over two hundred feet above the river. It is about sixty feet wide and provided with comfortable seats. A handsome railing in front. During the administration of Lord Dufferin it was very much improved and the name changed in honor of him. The great elevation affords a grand view over Lower Town across the river to Levis, and as far down as the eye can reach.



Provincial Parliament Buildings

Are among the finest public buildings in Canada. Within these buildings are the Legislative Halls and State Departments of the Province of Quebec. The walls are native stone. The building is a perfect square, 300 feet on each side. The interior finish is very elaborate. The buildings were completed in 1887.

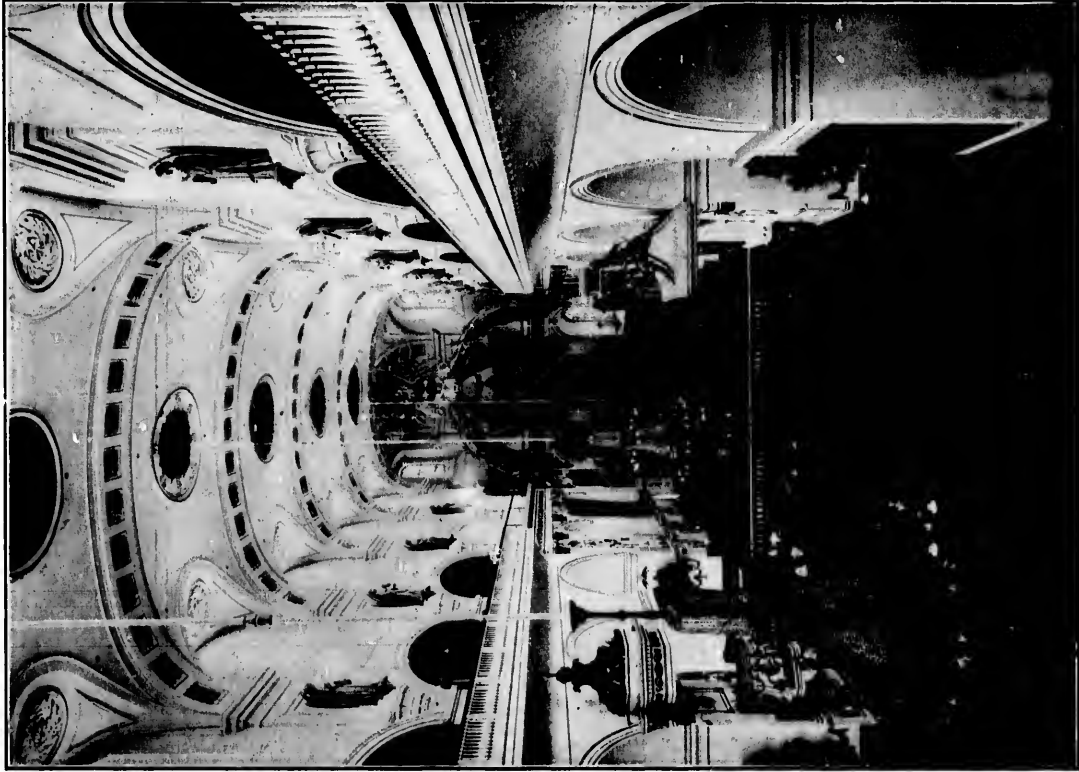
row of Cape
nd provided
re changed
th.



The Basilica or French Cathedral

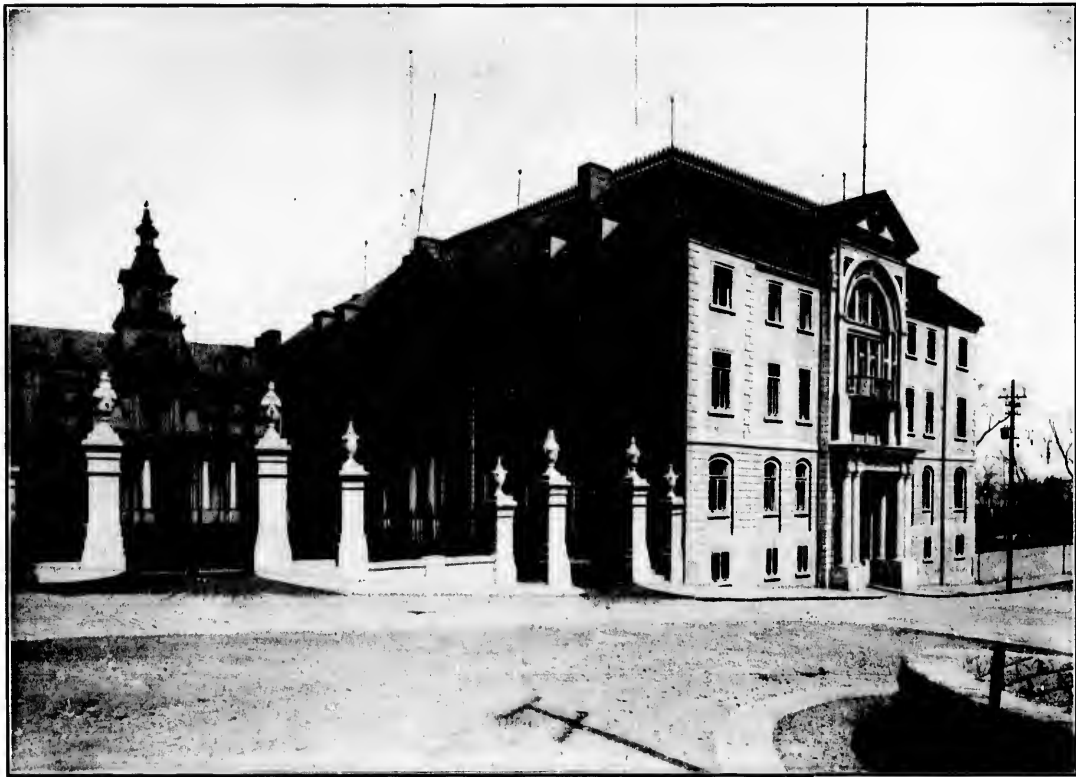
A wonderful medieval edifice, ancient in its construction, the form of its towers, its cupolas and the peculiar shape of the dome are still to be seen. The interior is all brightness, and the walls and gold ornaments lend a cheerfulness to its appearance, but the interior is all decorated with many of the old masters' best works of art. Work was commenced on the construction in 1462. The first mass was celebrated in 1663 and the church was consecrated in 1686. It was badly damaged in 1759 by the British bombardment. In 1871 it was raised to the rank of Basilica. Its chancel is a copy of St. Peter's at Rome. Its length is 216 feet and width 108 feet, with a seating capacity of 4,000 people.

A wonderful mediæval edifice, ancient in its construction, the form of its towers, its embases and the peculiar shape of the roof. It is the picturesqueness and cheerfulness to its appearance hard to describe. The walls are decorated with many of the old masters' best works of art. Work was commenced on the construction in 1447. The first mass was celebrated in 1665 and the church was consecrated in 1666. It was badly damaged in 1756 by the British bombardment. In 1874 it was raised to the rank of Basilica. Its capacity is 4,000 people.



Interior of the Basilica Church

It is quite impossible to describe the elaborateness of the decorations of this building. The statuary and paintings are most remarkable objects of historic interest, some of which were conveyed from France to Canada by the queen after the Reign of Terror in 1793. Some of the vestments were the gifts of former kings and queens of France.



The Arch Bishop Palace

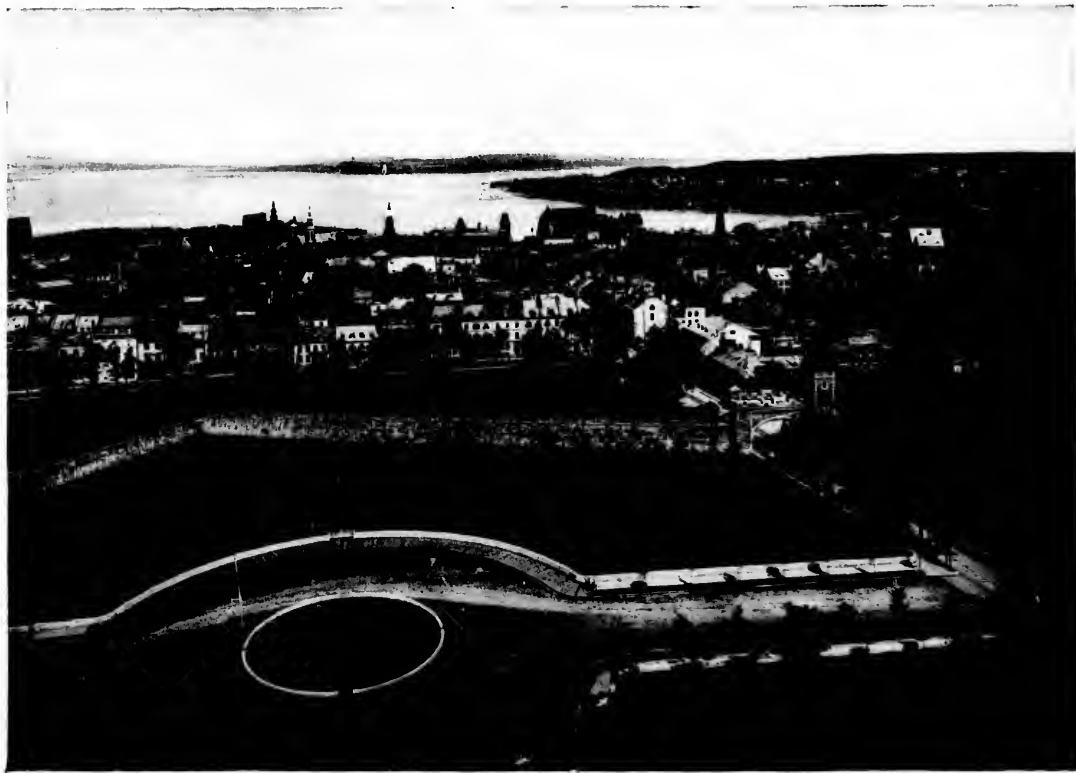


Laval University

Laval University was founded in 1663 by Mgr. de Montmorency Laval, first Catholic Bishop of Quebec and Canada. The original seminary building was destroyed by fire in 1701, which was thereafter rebuilt and the present buildings were erected in 1837.



City Hall, Court House and Place de Arms



Kent Gate and the Lower Part of the City

St. Charles River and a part of the City Wall from the Parliament Buildings



Photo by G. T. Ru. Co.

A Modern Calache

This is a mode of conveyance peculiar to Quebec and very much admired and sought after by the American tourist, more on account of its novelty than anything else.



Hotel Dieu Hospital

This institution was founded in 1639, by the Duchess D'Aiguillon, niece of the famous Cardinal Richelieu, who brought out the Hospitalieres Nuns and placed them in charge. This is the oldest institution of its kind in America.



Champlain's Monument

Erected on the east end of the Dufferin Terrace, on the site of the old St. Louis castle, where resided the French and English governors until it was destroyed by fire in 1834.



Monument to Jacques Cartier

The discoverer of the site of Quebec.

This
the
Engl
the
13th
the v



The Wolfe and Montcalm Monument

This monument was erected in Governor's Garden to the memory of Generals Wolfe and Montcalm, the English and French Generals who were both slain in the same battle on the Plains of Abraham, on the 13th day of September, 1759, the English army being the victors.



Monument to the braves on the Foye Road

Erected in 1830, to the memory of the brave English and French soldiers who fell in the second battle on the Plains of Abraham, in 1760. The monument is a bronze column standing upon a stone base. It was a present from Prince Napoleon. The attack was made by General Levis in an attempt to retake the city, but he could not force the English general to capitulate. The battle only lasted one hour and three-quarters, but raged so fiercely that after it was over the ground was strewn with forty thousand dead soldiers.



Wolfe's Monument

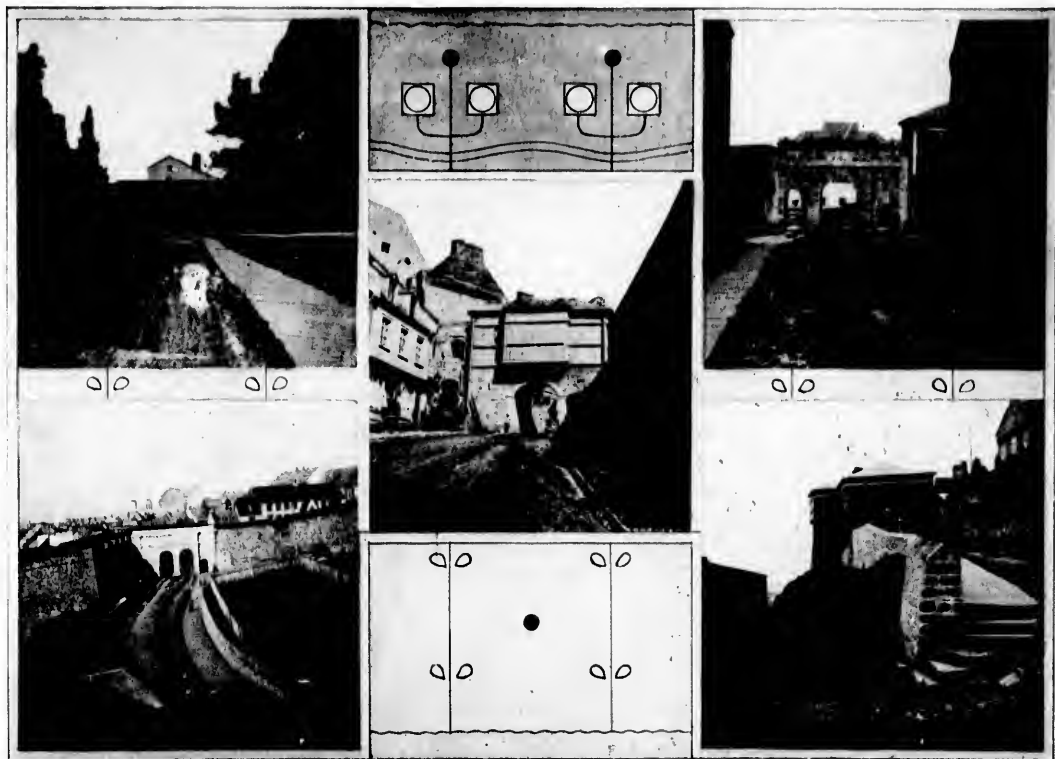
Erected in the year 1849 to mark the spot where General Wolfe fell in his desperate conflict with Montcalm, the leader of the French forces at Quebec in the memorable battle on the Plains of Abraham on the 13th day of September, 1759, which resulted in the death of both Wolfe and Montcalm and decided the fate of Canada in favor of the English for all time to come.



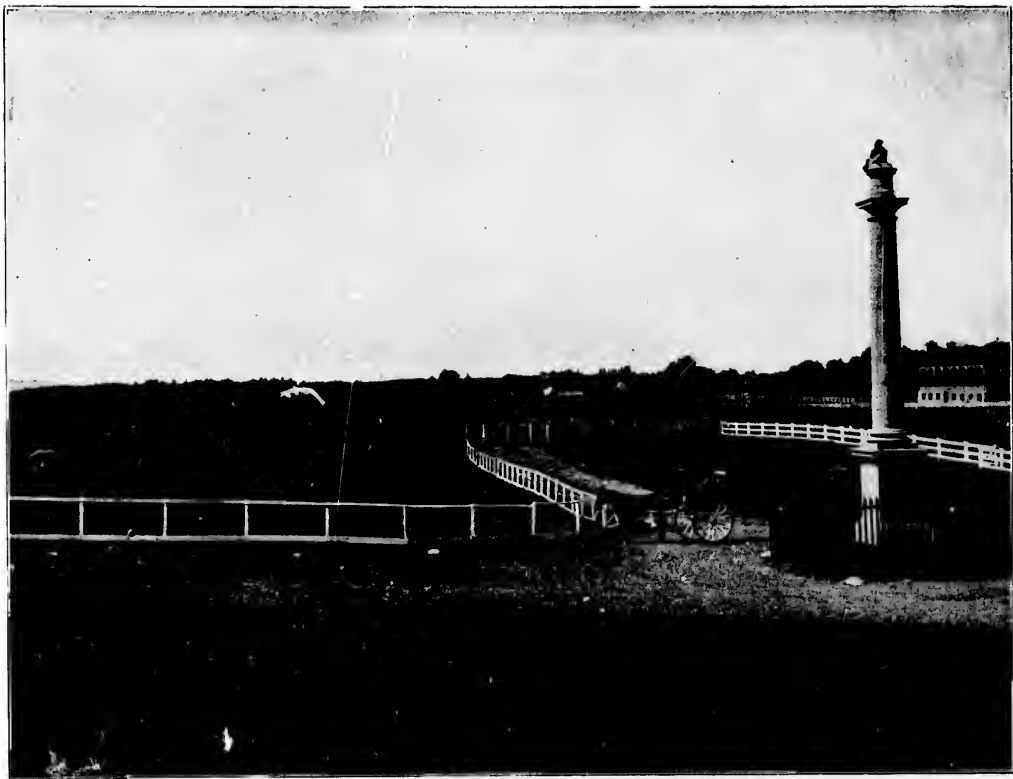
The New Kent Gate

The New St. Louis Gate

Originally, Quebec was a walled city, to which access could only be obtained through one of the six gates, namely, Kent, St. Louis, Hope, Prescott, Palace and St. Johns. The ravages of time, that accomplish all things, were having their effect on these gates and they were fast crumbling to the ground, when Lord Dufferin was appointed Governor General of Canada in 1872, and ordered the walls and gates restored.



Very interesting historical reminiscences of part of the fortifications during the time of the French regime



Plains of Abraham

Where both Wolfe and Montcalm fell in the memorable battle of September 13, 1759, between the French and English, and decided the reign of French supremacy in Canada for all time. Wolfe fell at the moment of his victory and Montcalm his defeat. One denied the participation in his glory, the other spared the mortification of his defeat.



Custom House. Situated in Lower Town near the Wharves

of French
the other



Break Neck Steps and Little Champlain Street

Old wooden steps leading from Champlain street to Mountain Hill were removed in 1891 and replaced by an elegant iron stairway with rail on each side. The name, "Break Neck Steps," was indeed very significant for them. In the winter when they were covered with ice and snow it must have been almost impossible to ascend or descend without fear of a broken neck. Little Champlain street is one of the oldest in Lower Town and still retains its extreme age with but very little evidence of modern conveniences.

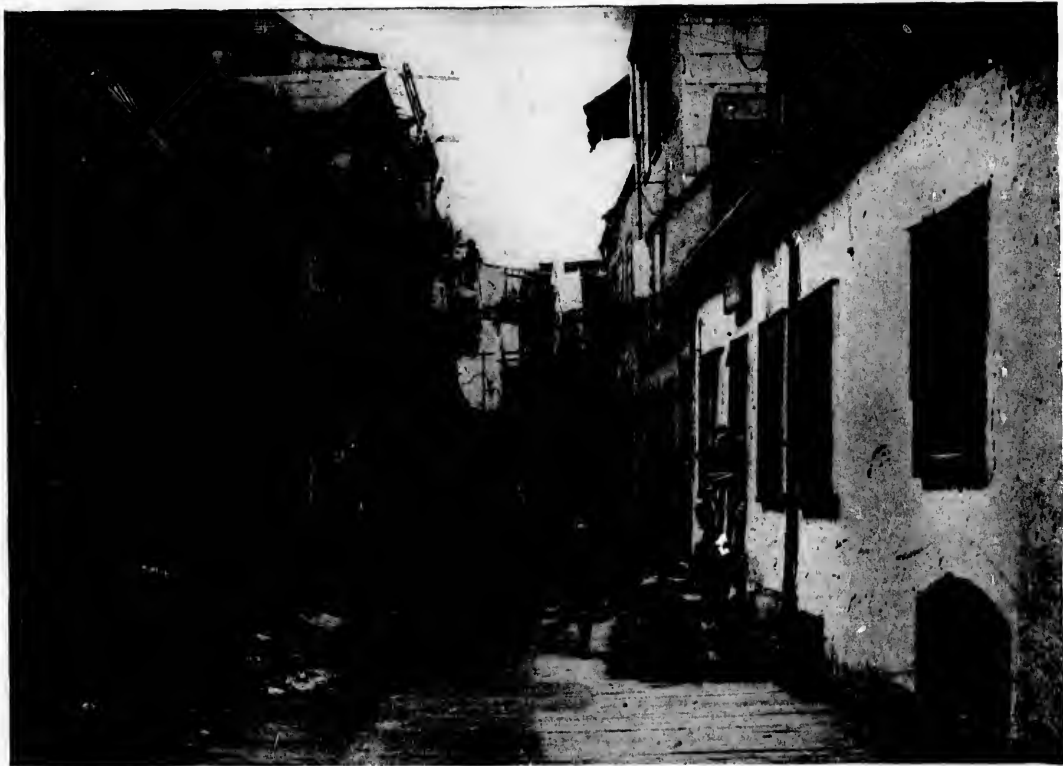
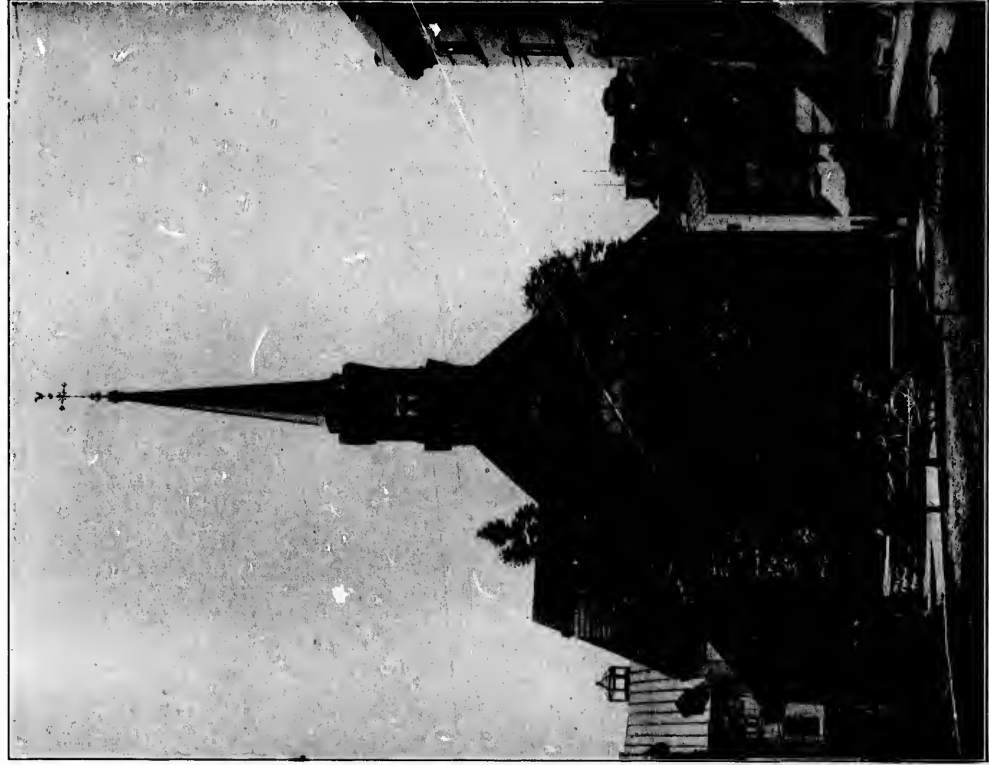


Photo by G. T. Ry. Co.

Sous Le Cap Street, Quebec

One of the oldest streets in Lower Town and so narrow that two carriages cannot meet and pass each other. The upper stories are occupied for living rooms, lines stretched from one side of the street to the other are used for drying clothes. An interesting diversion for the children living on the street is to watch for tourists and as they pass by in vehicles, call for "penny," and when one is thrown upon the ground a scramble for the coin occurs.



Church of Notre-Dame des Victories

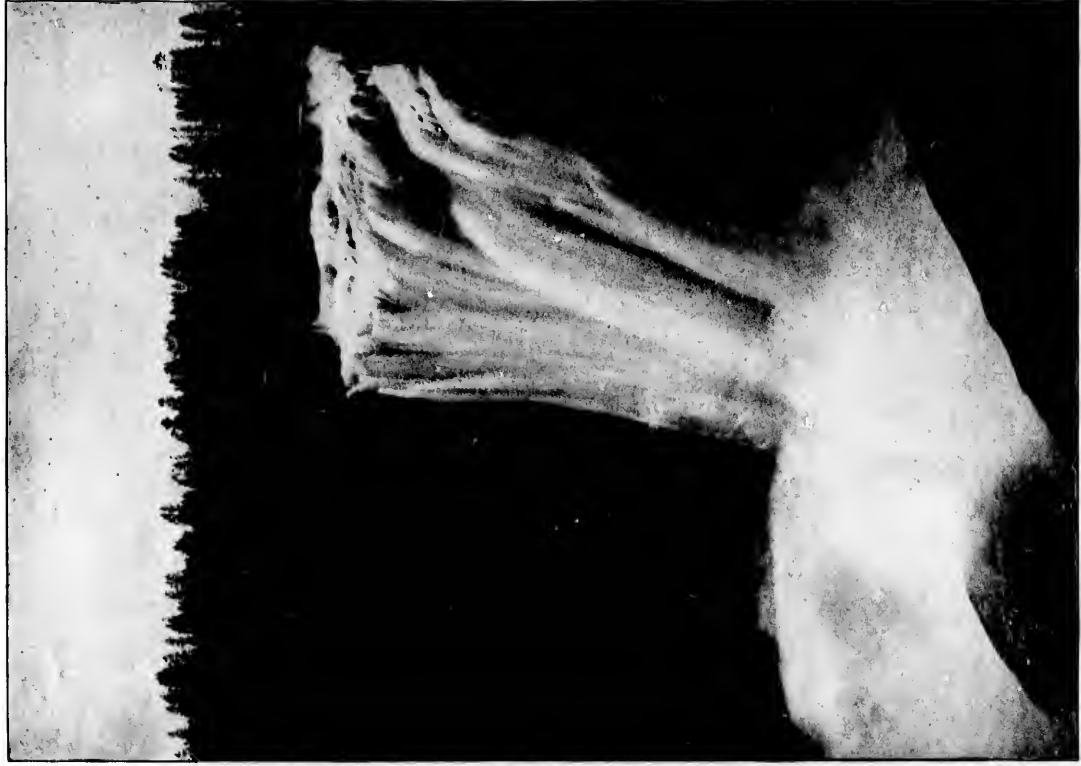
The little Lower Town Chapel, as it is usually called by the English, is rather insignificant from an architectural standpoint, but it is one of the oldest in the city of Quebec. It was erected in 1688 and dedicated as a thank offering by the French people for the memorable repulse of Sir William Phips' attack on Quebec in 1690, also, for their miraculous escape from surrender by the destruction of Sir Hovenden Walker's formidable army, wrecked in the Gulf of St. Lawrence in 1711. The interior is very interesting on account of its antiquated style of finish. Some of the oldest paintings in Canada are to be found in this chapel.

standpoint. Historically, it is one of the most interesting edifices in the city of Quebec. It was erected in 1783 and dedicated as a thank offering by the French people for the memorable repulse of Sir William Phillips' attack on Quebec in 1690, also for their miraculous escape from surrender by the destruction of Sir Hovenden Walker's formidable army, wrecked in the Gulf of St. Lawrence in 1711. The interior is very interesting on account of its antiquated style of finish. Some of the oldest paintings in Canada are to be found in this chapel.



Where Montgomery, the Brave American General, fell in a night attack upon Quebec, on Dec. 31, 1775

The sign board to designate the spot where the gallant American fell, was erected many years ago by a few generous-hearted Canadians who resided in that part of the city. The inscription can easily be seen from the decks of any of the steamers passing up and down the river.



The Falls of Montmorency just below Quebec

Affords a charming drive of nine miles along the banks of the old St. Lawrence, through the quaint, old, picturesque French village of Beauport, with its row of peculiar shaped white cottages on each side of the street. The view at the falls is of a fine expanse of water, with their four narrow garden patches. The height of the falls is over 250 feet, that of Niagara is only 160.

The Falls of Montmorenci just below Quebec

Affords a charming drive of nine miles along the banks of the old St. Lawrence, through the quaint, old, picturesque French village of Beauport, with its row of peculiar shaped white cottages on each side of the street, and the famous Beauport Race Course, with their long narrow narrow patches. The height of the falls is over 200 feet; that of Niagara is only 160.



Natural Steps at Falls at Montmorenci.

To some visitors the natural steps are the most wonderful part of the scene. The peculiar formation of rock as shown by the wearing away of the softer parts by the continual tumbling of the waters of this mad river as it rushes on over its precipitous course to the St. Lawrence, a short distance below, curling and eddying around in very conceivable form, at times almost disappearing under the overhanging cliffs. These projecting rocks are sometimes used by picnic parties for tables upon which to spread their collations.



Falls of Montmorenci



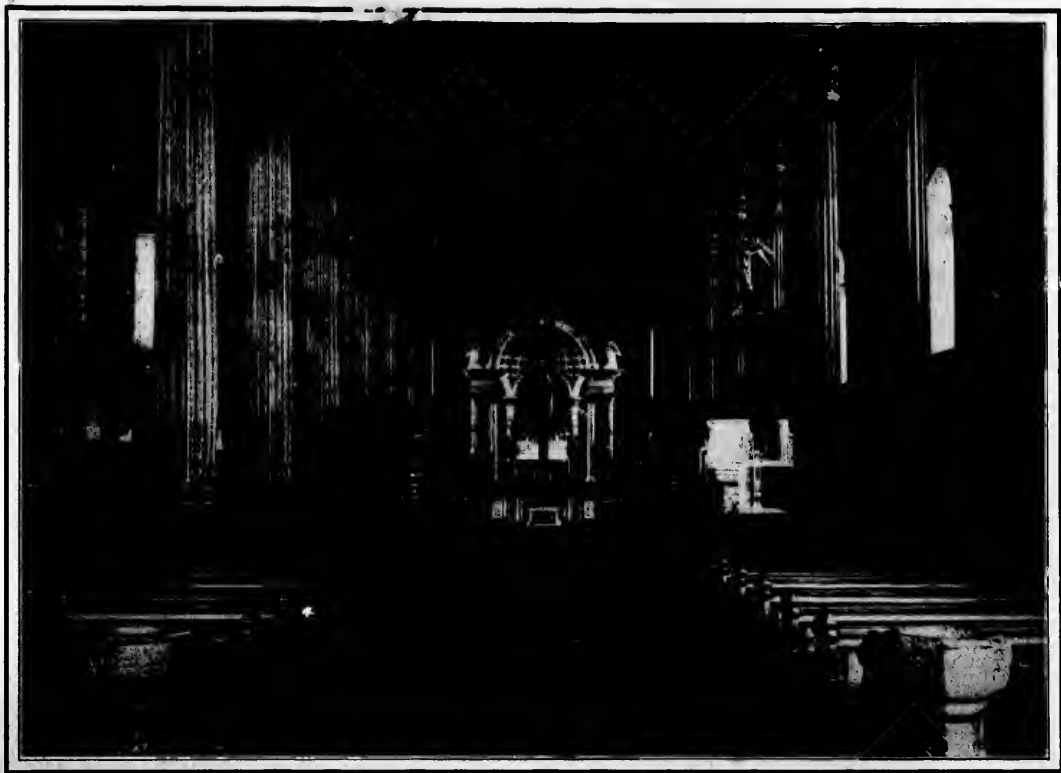
A Group of Moose and Red Deer in Montmorenci Park

A part of a collection of native wild animals owned and kept by Holl. Renfrew & Co., the noted furriers of Quebec.



The World's Famous Basilica of Ste Anne de Beaupre

In which a great number of miraculous cures have been effected. In this edifice now rests sacred relics of Ste. Anne.



The Interior of the Basilica

The pulpit shown at the right is considered one of the most elaborate and expensive pulpits in any of the Catholic churches today and is made of solid marble. This is also true of the pedestal that supports the large statue of Ste. Anne and child. Paintings and statues are very prominent and numerous throughout the entire edifice.



