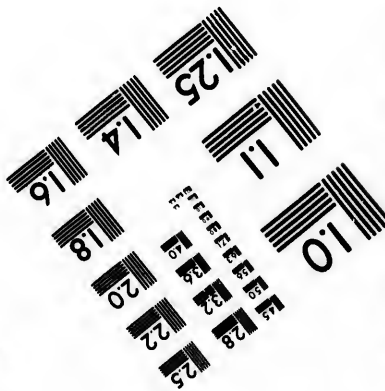
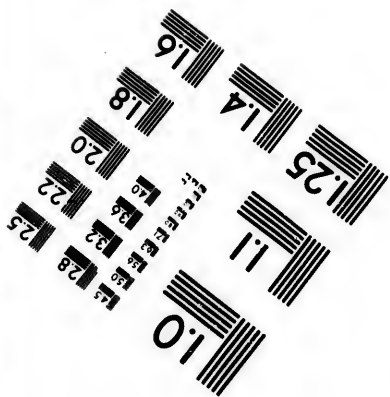
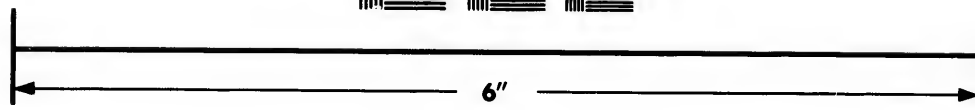
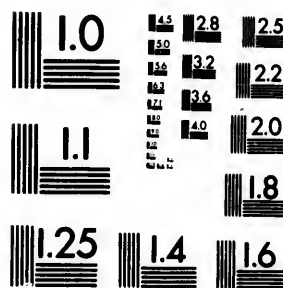


**IMAGE EVALUATION
TEST TARGET (MT-3)**



**Photographic
Sciences
Corporation**

23 WEST MAIN STREET
WEBSTER, N.Y. 14580
(716) 872-4503

1.8
2.0
2.2
2.5
2.8
3.2
3.6
4.0
4.5
5.0
5.6
6.3
7.1
8.0
9.0
10.0
11.2
12.5
14.0
16.0
18.0
20.0
22.5
25.0
28.0
31.5
36.0
40.0
45.0
50.0
56.0
63.0
71.0
80.0
90.0
100.0

**CIHM/ICMH
Microfiche
Series.**

**CIHM/ICMH
Collection de
microfiches.**



Canadian Institute for Historical Microreproductions / Institut canadien de microreproductions historiques

© 1983

1.0
1.8
2.0
2.2
2.5
2.8
3.2
3.6
4.0
4.5
5.0
5.6
6.3
7.1
8.0
9.0
10.0
11.2
12.5
14.0
16.0
18.0
20.0
22.5
25.0
28.0
31.5
36.0
40.0
45.0
50.0
56.0
63.0
71.0
80.0
90.0
100.0

Technical and Bibliographic Notes/Notes techniques et bibliographiques

The Institute has attempted to obtain the best original copy available for filming. Features of this copy which may be bibliographically unique, which may alter any of the images in the reproduction, or which may significantly change the usual method of filming, are checked below.

L'Institut a microfilmé le meilleur exemplaire qu'il lui a été possible de se procurer. Les détails de cet exemplaire qui sont peut-être uniques du point de vue bibliographique, qui peuvent modifier une image reproduite, ou qui peuvent exiger une modification dans la méthode normale de filmage sont indiqués ci-dessous.

- | | |
|--|--|
| <input checked="" type="checkbox"/> Coloured covers/
Couverture de couleur | <input type="checkbox"/> Coloured pages/
Pages de couleur |
| <input type="checkbox"/> Covers damaged/
Couverture endommagée | <input type="checkbox"/> Pages damaged/
Pages endommagées |
| <input type="checkbox"/> Covers restored and/or laminated/
Couverture restaurée et/ou pelliculée | <input type="checkbox"/> Pages restored and/or laminated/
Pages restaurées et/ou pelliculées |
| <input type="checkbox"/> Cover title missing/
Le titre de couverture manque | <input type="checkbox"/> Pages discoloured, stained or foxed/
Pages décolorées, tachetées ou piquées |
| <input type="checkbox"/> Coloured maps/
Cartes géographiques en couleur | <input type="checkbox"/> Pages detached/
Pages détachées |
| <input type="checkbox"/> Coloured ink (i.e. other than blue or black)/
Encre de couleur (i.e. autre que bleue ou noire) | <input type="checkbox"/> Showthrough/
Transparence |
| <input type="checkbox"/> Coloured plates and/or illustrations/
Planches et/ou illustrations en couleur | <input type="checkbox"/> Quality of print varies/
Qualité inégale de l'impression |
| <input type="checkbox"/> Bound with other material/
Relié avec d'autres documents | <input type="checkbox"/> Includes supplementary material/
Comprend du matériel supplémentaire |
| <input checked="" type="checkbox"/> Tight binding may cause shadows or distortion
along interior margin/
La reliure serrée peut causer de l'ombre ou de la
distortion le long de la marge intérieure | <input type="checkbox"/> Only edition available/
Seule édition disponible |
| <input type="checkbox"/> Blank leaves added during restoration may
appear within the text. Whenever possible, these
have been omitted from filming/
Il se peut que certaines pages blanches ajoutées
lors d'une restauration apparaissent dans le texte,
mais, lorsque cela était possible, ces pages n'ont
pas été filmées. | <input type="checkbox"/> Pages wholly or partially obscured by errata
slips, tissues, etc., have been refilmed to
ensure the best possible image/
Les pages totalement ou partiellement
obscurcies par un feuillet d'errata, une pelure,
etc., ont été filmées à nouveau de façon à
obtenir la meilleure image possible. |
| <input type="checkbox"/> Additional comments:/
Commentaires supplémentaires: | |

This Item is filmed at the reduction ratio checked below/
Ce document est filmé au taux de réduction indiqué ci-dessous.

10X	12X	14X	16X	18X	20X	22X	24X	26X	28X	30X	32X
<input type="checkbox"/>	<input type="checkbox"/>	<input type="checkbox"/>	<input type="checkbox"/>	<input type="checkbox"/>	<input type="checkbox"/>	<input type="checkbox"/>	<input checked="" type="checkbox"/>	<input type="checkbox"/>	<input type="checkbox"/>	<input type="checkbox"/>	<input type="checkbox"/>

The copy filmed here has been reproduced thanks to the generosity of:

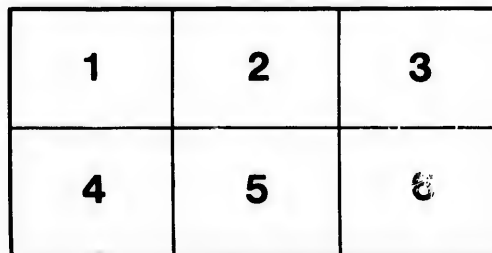
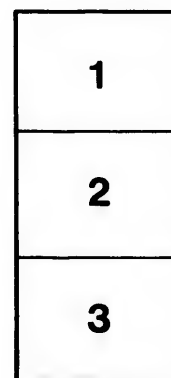
Library of Congress
Photoduplication Service

The images appearing here are the best quality possible considering the condition and legibility of the original copy and in keeping with the filming contract specifications.

Original copies in printed paper covers are filmed beginning with the front cover and ending on the last page with a printed or illustrated impression, or the back cover when appropriate. All other original copies are filmed beginning on the first page with a printed or illustrated impression, and ending on the last page with a printed or illustrated impression.

The last recorded frame on each microfiche shall contain the symbol \rightarrow (meaning "CONTINUED"), or the symbol ∇ (meaning "END"), whichever applies.

Maps, plates, charts, etc., may be filmed at different reduction ratios. Those too large to be entirely included in one exposure are filmed beginning in the upper left hand corner, left to right and top to bottom, as many frames as required. The following diagrams illustrate the method:



L'exemplaire filmé fut reproduit grâce à la générosité de:

Library of Congress
Photoduplication Service

Les images suivantes ont été reproduites avec le plus grand soin, compte tenu de la condition et de la netteté de l'exemplaire filmé, et en conformité avec les conditions du contrat de filmage.

Les exemplaires originaux dont la couverture en papier est imprimée sont filmés en commençant par le premier plat et en terminant soit par la dernière page qui comporte une empreinte d'impression ou d'illustration, soit par le second plat, selon le cas. Tous les autres exemplaires originaux sont filmés en commençant par la première page qui comporte une empreinte d'impression ou d'illustration et en terminant par la dernière page qui comporte une telle empreinte.

Un des symboles suivants apparaîtra sur la dernière image de chaque microfiche, selon le cas: le symbole \rightarrow signifie "A SUIVRE", le symbole ∇ signifie "FIN".

Les cartes, planches, tableaux, etc., peuvent être filmés à des taux de réduction différents. Lorsque le document est trop grand pour être reproduit en un seul cliché, il est filmé à partir de l'angle supérieur gauche, de gauche à droite, et de haut en bas, en prenant le nombre d'images nécessaire. Les diagrammes suivants illustrent la méthode.

aire
détails
es du
modifier
ger une
filmage

ées

ra

y errata
d to

nt
ne pelure,
çon à



32X

Handwritten text on the right edge of the page, partially cut off. The visible portion includes a vertical line and a curved mark, possibly a flourish or the start of a word.

1

2.6.

Niagara and
Chautauqua

"THE GLOBE" CLOTHIERS, BUFFALO

IF YOU contemplate getting Clothing, Hats, Caps, or Furnishing Goods for yourself or boy, it will pay you to wait till you get to Buffalo, and then go direct to "The Globe." The entire building is devoted to the Retail Business only. You can get Business or Dress Suits, Pantaloon of all kinds, the latest novelties in Furnishing Goods, Hats and Caps of all descriptions—in fact, anything and everything for a man's complete outfit can be obtained at "The Globe." The entire second floor is devoted to the Boys' and Children's Department, and is THE LARGEST IN BUFFALO. Suits from one dollar up to fifteen or twenty, and Pants from nineteen cents to five dollars, can be found here. You will find the prices right every time, and the quality of the goods is just as represented. We are desirous of obtaining your patronage, and are confident of retaining it. WE EMPLOY NO SOLICITORS AT THE DEPOTS, so don't be misled. "The Globe" is only about three minutes' walk from the depots, and is on Seneca Street, directly opposite the Post-Office. SOUVENIRS GIVEN TO EVERY CUSTOMER.

37-39—Seneca Street—37-39

Opposite Post-Office,

BUFFALO, N. Y.

DESBECKER & CO.,

"The Globe" Clothiers,

HATTERS AND FURNISHERS.

RS,

so
utes'
pposite
USTOMER.

thiers,

RS.

-

C

-

re

a

p

c

i

b

h

f

. . . EVERYBODY WHO COMES TO . . . NIAGARA

COMES TO BUFFALO AND EVERYBODY WHO COMES
TO BUFFALO

. . . COMES TO B. H. & CO'S

It is perfectly understood, yet will bear repetition, that visitors are made perfectly at home here.

There are resting rooms for ladies, places in which baggage may be kept until called for free of charge, plenty of interesting things all over the store which you may buy or not, just as you please. It is all here for you to enjoy precisely in your own fashion—with none to molest.

BARNES, HENGERER & CO.

. . . IT IS THE "MACY'S,"
THE WANAMAKER'S OF
BUFFALO, AND FOR A
PERFECT STORE OF ITS
SIZE IS NOT EQUALED
THE COUNTRY OVER . . .



GENERAL VIEW OF NIAGARA FALLS FROM PROSPECT POINT.

C

X
8

THE

GENERAL VIEW OF NIAGARA FALLS FROM PROSPECT POINT.

Niagara and Chautauqua

Newton, Samuel B

COMPLIMENTS . . .

4
Guide
2002



THE WENBORNE-SUMNER CO., PRINTERS,
BUFFALO, N. Y.

C.H.B.

A CHANCE ^{FOR} YOUNG PEOPLE

—) TO SECURE (—

A GOOD START ❖ ❖

❖ IN BUSINESS LIFE



YOUNG MEN and WOMEN desiring good situations should attend a *live, well-known, and popular* business school, where business firms are constantly applying for capable Book-keepers, Stenographers, and Office Assistants. The **Bryant & Stratton Business College, Shorthand and English School**, located in the elegant *fire-proof* building, corner Main St. and Lafayette Park, Buffalo, N. Y., offers unequalled advantages for giving young people a successful start in business life. It has the best course of Study and Practice; the most capable and painstaking teachers; experienced management, and superior facilities. Hundreds of students sent to good positions every year. A thorough and practical **Business, Shorthand or English** course may be taken by **Mail**, at your own **Home**, if preferred. Low rates, and satisfaction guaranteed.

If you wish instruction by Mail, write for "CORRESPONDENCE ANNOUNCEMENT," or if you prefer attending the College, ask for "ILLUSTRATED PROSPECTUS." These will be sent **FREE** to all mentioning this book. . . .

BRYANT & STRATTON, ❖ 451 Main Street, ❖ BUFFALO, N. Y.

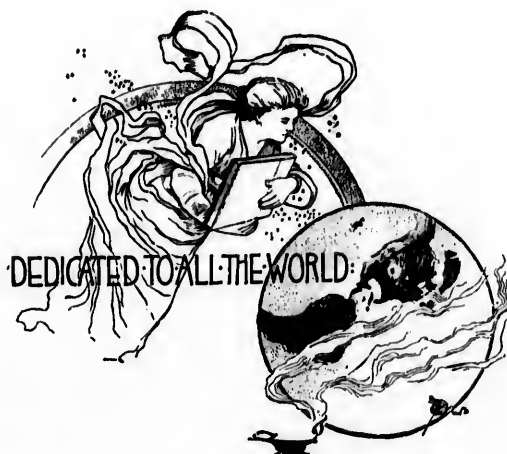
PLE

LIFE

ld attend a *live*,
is are constantly
Office Assistants.
English School,
Lafayette Park,
people a success-
actice; the most
nd superior facil-
A thorough and
by Mail, at your
d.

attending

LO, N. Y.



Entered according to Act of Congress,
in the year 1891, by

S. B. NEWTON,

In the Office of the Librarian of Congress
at Washington, D. C.

"FASHIONABLE HATTERIE."

"KNOX," *GE Moore* "HEATH," AND
"MILLER," *GE Moore* "Own Brand."

"FASHIONABLE FURRIERY."

SHOULDER CAPES! "CHOICE COMBINATIONS." . . .
"RICH IMPORTATIONS." . . .

GE Moore

Special Personal COMMISSIONS for EUROPE,
Season 1891-2, received by

-FOR-

LONDON

GE Moore

-AND-

PARIS

STORE your FURS!—also have RENOVATIONS made
in Summer!

By

GE Moore

327 MAIN STREET,
BUFFALO, N. Y.

"EXCLUSIVE STYLES."

See this season's "Special" Hat!
"THE CROFTER."

Moore

THE + FURNISHER

325 Main Street, BUFFALO, N. Y.

Men's Fine Furnishing Goods

UNDERWEAR, HOSIERY,

GLOVES,

NECKWEAR and SHIRTS.

SPORTING and OUTING GOODS

FINE SHIRTS TO ORDER.

Orders by Mail receive prompt attention

poss
Parl
Niag
ing
the
prec
not
und
hav
The
vic
cha
\$.
Ex
w.



THE FALLS are so situated that one can spend days in their vicinity with profit. Weeks could be spent exploring their surroundings, and each day would bring to light some new attraction.

If your stay is to be limited to a few hours, you will find it advantageous to have definite plans upon arrival.

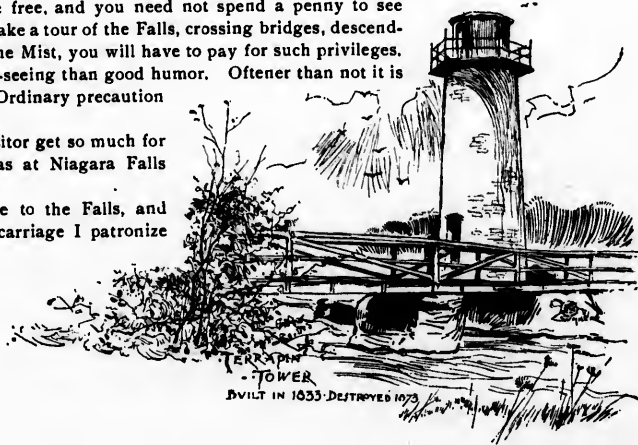
If you intend to take a carriage on arriving, arrange for it through the agent on the train if possible; you will find it will save you much annoyance, and add greatly to your comfort. The Parks in the immediate vicinity of the Falls are free, and you need not spend a penny to see Niagara in all its grandeur, but if you wish to make a tour of the Falls, crossing bridges, descending Incline railways, or riding on the Maid of the Mist, you will have to pay for such privileges.

Nothing adds more to the pleasure of sight-seeing than good humor. Oftener than not it is the visitor's own fault if he is imposed upon. Ordinary precaution precludes extortion.

At no other resort in the world does the visitor get so much for nothing or find such well regulated charges as at Niagara Falls under the present system.

I have taken over eighty thousand people to the Falls, and have found the above to be facts. If I need a carriage I patronize The Miller & Brundage Coach Company, who are reliable and moderate in their charges.

S. B. NEWTON,
Excursion Agt.
W. N. Y. & P. R. R.



TERRAPIN
TOWER
BUILT IN 1833 DESTROYED 1873

E
SHER
O, N. Y.
ng Goods
SIERY.
HIRTS.
G GOODS
R.
t attention

The Popular Fashionable Tailoring House of Buffalo

Is in full blast, with a stock of Foreign and Domestic Cloths never equalled in this market.

Our Prices for First-Class Garments are knocking the high-priced tailoring establishments perfectly silly.

We are the only house west of New York City organized on the Custom Manufacturing Tailoring plan.

We can save for you at least 25 per cent. in clean cash on every garment you order from us, and Guarantee Satisfaction.

RIEDEL & ROBINSON,

36 and 38 Niagara Street.



Niagara

"The pomp of Kings and Emperors in every clime and zone
Grows dim beneath the splendors of this glorious water throne."

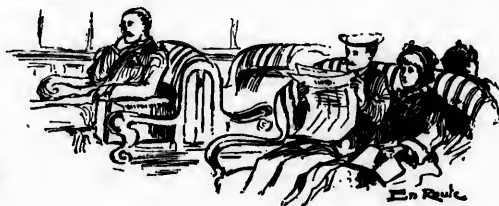
FOR sublimity and grandeur in the rush and leap of mighty waters, the Falls of Niagara stand unrivaled and alone. The scene from the rocks below the falls, when the morning sun throws its beaming rays over the bounding waters, is a sight never to be forgotten.

Let us go to the Falls!

The foaming, boiling caldron, at the foot of the Falls, with its wild currents and storm of mist and wind, forms a striking contrast with the beautiful waters above, from which every spray drop gives back a diamond—every column of the descending element a pillar of silver, and in the



Guides to things



En Route



equalled in

priced tailor-
perfectly silly.
the Custom

h can every
order from

N,

a Street.

ESTABLISHED 1850.

CAPITAL AND SURPLUS, - - - \$1,300,000.00.

THE
Manufacturers & Traders Bank

BUFFALO, N. Y.

DIRECTORS:

PASCAL P. PRATT,
FRANCIS H. ROOT,
JAMES H. MADISON,

BRONSON C. RUMSEY,
JOHN D. HILL,
WILLIAM H. GLENNY,

FRANKLIN D. LOCKE,
ROBERT L. FRYER,
WILLIAM HAMLIN,

JOHN J. McWILLIAMS,
GEORGE S. FIELD,
HARRY T. RAMSDELL.

OFFICERS.

PASCAL P. PRATT *President.*
FRANCIS H. ROOT *Vice-President.*
JAMES H. MADISON *Cashier.*
HARRY T. RAMSDELL *Assistant Cashier.*
R. H. DANFORTH *Second Assistant Cashier.*

ACCOUNTS OF BANKS, Bankers, Manufacturers, Merchants and others received on the most favorable terms.
SPECIAL DEPOSITS RECEIVED, on which interest will be paid as agreed.
Collections promptly remitted for at lowest rates. Brown Bros. & Co.'s Letters of Credit issued.

QUARTERLY REPORT, MARCH 21, 1891.

RESOURCES.		LIABILITIES	
Loans and Discounts.....	\$4,187,276.22	Capital	\$900,000.00
RESERVE:		Surplus.....	350,000.00
Cash on Hand.....	\$318,958.57	Undivided Profits.....	115,205.76
Cash with Banks.....	799,220.32	Deposits.....	4,035,467.86
Real Estate.....	\$1,118,178.89		
Bonds and Mortgages.....	17,371.19		
	77,846.72		
	\$5,400,673.62		\$5,400,673.62

00.

Bank

WILLIAMS,
FIELD,
AMSDELL.

favorable terms.

.....	\$900,000.00
.....	350,000.00
.....	115,205.76
.....	4,035,467.86
.....	5,400,673.62

center the bright emerald of the deep water curving over the cliff reflects the most brilliant gems.

The illustrations here appended can convey but a feeble impression of the

great panorama that presents itself to the eye of the tourist as he views the Falls of Niagara for the first time. The number and variety of the objects that present themselves, and the reflections of the mind that follow, all combine to complete the grand scene. Forests, cliffs and islands; banks, foam and spray, wood, rock and precipice, dimmed with the rising mist, are all seen in one view, canopied and gilded by the softening tints of the rainbow.

DESCRIPTIVE.—For the reason that the task of describing any scene in nature is difficult in proportion to its rarity, and that we derive our conception of the same from the comparison it will bear with other works of nature, and for the further reason that Niagara Falls is *unique*, and totally unlike any other scene on the face of the earth, it is a most onerous task to produce such a pen picture of the Falls as can convey to the minds of readers who have never seen them an accurate idea of their grandeur. Many minds have assayed to reproduce Niagara literally, many pens have recorded the impressions of visitors respecting it, without even faintly describing it; for there is no known rhythm whose cadence will attune itself to the tremendous hymn of this sound "as of many waters," neither will blank verse serve to rehearse its attributes in song. The best specimen of the latter was written by a gifted poet who visited this locality especially to set forth its beauties in verse, but who recorded only the following words:

"I came to see!
I thought to write!
I am but dumb!"



**THE EMPIRE STATE
MUTUAL LIVE STOCK
INSURANCE COMP'Y**

Incorporated under the Laws of the State of New York.

OFFERS to horse owners the **BEST** and **CHEAPEST** plan of Insurance now in existence. It pays claims for death, caused either by **disease** or **accident**. We want good, energetic, reliable men, with a knowledge of horses, to act as agents. The right kind of men will find it a profitable employment. Send for circulars which will give full information.

HEADQUARTERS OF THE COMPANY,

OLEAN, N. Y.

C. S. STOWELL, President. JOHN SLOANE, Secretary.

INSURE IN - -

The Standard Accident Insurance Co.

OF DETROIT, MICH.

CASH CAPITAL, \$200,000. - ASSETS, over \$528,000.

*D. M. FERRY, STEWART MARKS,
President. Secretary.*

"THE STANDARD" Allows Fifty-two weeks Indemnity.

(Other Companies twenty-six Weeks.)

Issues the most liberal policy of any Company in America.

Equitable in Settlements! Prompt in Payments!

JNO. A. JONES, *Manager for Western New York and Northwestern Pennsylvania*

5 and 6 Board of Trade Building, BUFFALO, N. Y.

Agents on line W. N. Y. & P. R. E.

C. B. Armstrong & Co., Buffalo, N. Y.	E. A. Barden, Eldred, Pa.
Thomas Fitzgerald, 45 Chapin Block, Buffalo, N. Y.	W. C. Burrows, Austin, Pa.
Bloomer & Bullard, 64 Pearl St., Buffalo, N. Y.	W. S. O'Brien, Emporium, Pa.
Frank B. Nye, E. Aurora, N. Y.	George S. Ellicott, Mt. Morris, N. Y.
Horace Selleck, Holland, N. Y.	C. H. Kennedy, Bradford, Pa.
L. S. Ely, Franklinville, N. Y.	J. L. Van Buren, Dunkirk, N. Y.
Thos. Troy, Olean, N. Y.	F. G. Brown, Titusville, Pa.
	R. G. Beveridge, Oil City, Pa.
	A. Y. Findlay, Franklin, Pa.
	E. E. Phillips, New Castle, Pa.

Insurance Co.

over \$528,000.

MARKS,
Secretary.

Fifty-two weeks
Indemnity.

any in America.

Payments!

ern New York and
Pennsylvania

ALFO, N. Y.

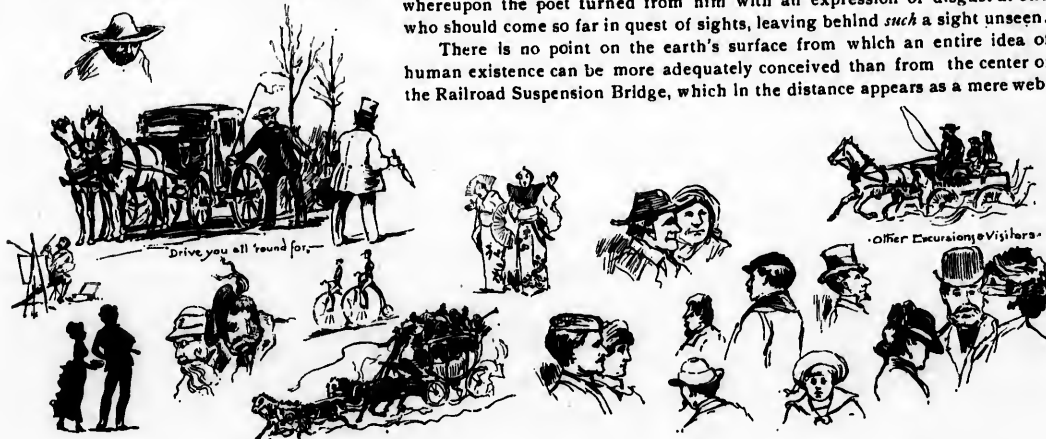
. R.

Eldred, Pa.
Austin, Pa.
Emporium, Pa.
ott, Mt. Morris, N.Y.
Bradford, Pa.
Dunkirk, N. Y.
itusville, Pa.
e, Oil City, Pa.
Franklin, Pa.
New Castle, Pa.

Of all the sights on this earth of ours which tourists travel to see—at least all of those which I have seen—I am inclined to give the palm to the Falls of Niagara. In the catalogue of such sights I will include all buildings, pictures, statues and wonders of art made by men's hands, and also all beauties of nature prepared by the Creator for the delight of His creatures. This is a long word, but, as far as my taste and judgment go, it is justified. I know no other one thing so beautiful, so glorious, and so powerful.—*Anthony Trollope.*

It is related of that unconventional Englishman, Lord Byron, that on meeting an American gentleman, just arrived in London, he asked abruptly if the traveler had ever seen Niagara Falls. The American contritely admitted that he never had, whereupon the poet turned from him with an expression of disgust at one who should come so far in quest of sights, leaving behind *such* a sight unseen.

There is no point on the earth's surface from which an entire idea of human existence can be more adequately conceived than from the center of the Railroad Suspension Bridge, which in the distance appears as a mere web.



THE BIG WHITE FURNITURE STORE

ESTABLISHED 1857.

IRISH & ENGLISH, LIVE
HOUSE AND OFFICE FURNISHERS

And Manufacturers of fine Upholstery and Bedding,

303, 305 and 307 Washington Street, BUFFALO, N. Y.

UPHOLSTERED FURNITURE ALL OUR OWN
MANUFACTURE.

CHAMBER SUITS, DINING ROOM SETS,

CARPETS, DRAPERIES, LACE CURTAINS,

PORTIERS, CROCKERY, PLATED WARE,

LAMPS, CLOCKS, RUGS, BEDS AND BED-

DING, OIL CLOTH, MATTING, Etc., Etc.

SOLE AGENTS FOR THE
Indianapolis Cabinet Co.'s Office Desks and Furniture
OFFICE CHAIRS, STOOLS, LETTER PRESS STANDS, Etc.

FOUNDRY REPOSITORY

For Sherman S. Jewett & Co.'s Stoves, Ranges and Repairs.

ADAM HEINZE'S REFRIGERATORS AND
ICE CHESTS.

J. B. SWEET & SONS' CHILDREN'S
CARRIAGES.

Freight paid and purchases packed for non-residents.

LOOK FOR THE BIG WHITE FURNITURE STORE.

MOORE

HERS

and Furniture
STANDS, Etc.

ages and Repairs.

ORS AND

REN'S
ARRIAGES. . .

non-residents.



AMERICAN FALLS AS SEEN FROM CANADIAN FLEE PARK.

OUR PERSONALLY CONDUCTED
EXCURSIONS

TO

**CHAUTAUQUA LAKE,
NIAGARA FALLS,
THE THOUSAND ISLANDS,
ONTARIO BEACH,**



And other resorts, have been very popular in the past and will be made more popular this season, with new cars and everything that helps make traveling comfortable. An occasional day's outing costs but little and is the best tonic for mankind. We have prepared a list of these Excursions for the season of 1891. If you contemplate a trip to Chautauqua, Niagara, The Thousand Islands, or any of the other Popular Summer Resorts reached by this company, write to **S. B. NEWTON, Excursion Agent, 84 Exchange Street**, and full information will be given.

W
IRK
ANIA

S,
EACH,

ars and every-
for mankind.
Niagara, The
TON, Excur-



St.



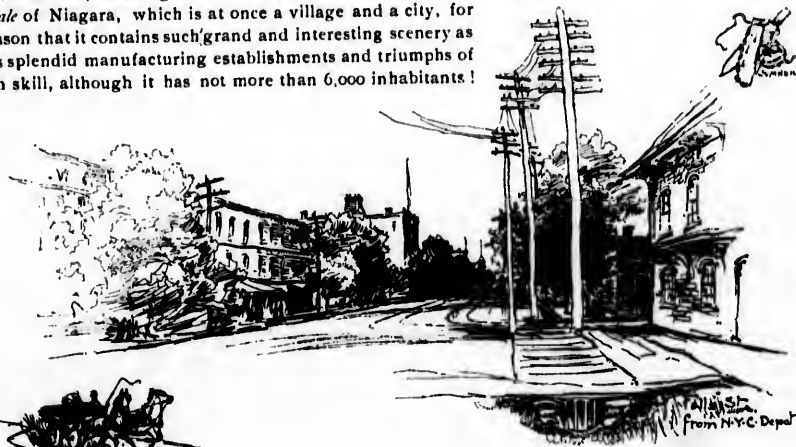
Dark of
the Falls
M.P.



seeing the
falls.



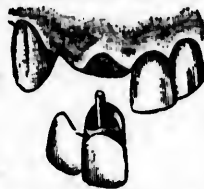
between the two cliffs, although solid and substantial as man's ingenuity can make it. There, suspended in mid-air between precipices inclosing a terrifying chasm, through which rushes the mighty flood, it is impossible to stand without experiencing that feeling of enthusiasm connected with the assumption that the creation contains no power too great for human control. Yet, when the heavily-laden freight trains cause the fabric to tremble, the possibility of the breaking of the bridge seems so near, and total destruction in that event so certain, then the feeling of exultation is necessarily allied with that of fear, recalling the idea of standing face to face with eternity. This, briefly and tersely, is the locale of Niagara, which is at once a village and a city, for the reason that it contains such grand and interesting scenery as well as splendid manufacturing establishments and triumphs of human skill, although it has not more than 6,000 inhabitants!



From N.Y.C. Depot

The Latest Style in Dentistry is
OLD TEETH CAPPED WITH GOLD

TEETH . . .
 WITHOUT
 . . . PLATES
 BY OUR
PERFECT
Crowning System.



DURABLE,
COMFORTABLE,
BEAUTIFUL.

—
Fine Gold Filling
A SPECIALTY.

Teeth filled and extracted without pain by the use of
DR. HILL'S VITALIZED AIR,
 made fresh every day and perfectly harmless. Anyone can take it with
 perfect safety, young or old.

Sets of Teeth on Gold Plate or Aluminum at Bottom Prices.
 Best sets of Teeth on Rubber Plate 8 and 10 dollars.
 Beautiful Sets on Celluloid, \$15. Gold lined Plates a Specialty.
 Fine Gold Fillings 1.50 and upwards. Silver Filling 75 c. and upwards.
 Teeth extracted 25 cts. Vitalized Air administered 50 cts.

TEETH EXTRACTED POSITIVELY WITHOUT PAIN.
 Teeth examined and advice given free. People from abroad, by
 leaving their order for Artificial Teeth in the morning,
 can have them the same day.

BRANCH of the ALBANY DENTAL ASSOCIATION
 The Largest Dental Establishment in the World.
 Offices in sixteen different cities.

Buffalo Office, - 272 Main Street.
Dr. G. E. HILL, Albany Dentist.
 We lead, let others follow. Office open at all hours.

SOLID OR CUSHION
 TIRES.



POSITIVELY THE
 LIGHTEST AND STRONG-
 EST WHEEL BUILT
 IN AMERICA.

WARWICK,

PRICE, \$135.00.
 ADOPTED BY THE U. S. GOVERNMENT IN THE
 MAIL SERVICE AT WASHINGTON.

FEATHERSTONE'S PNEUMATIC,

PRICE, \$135.00.
 . . . 27 Different Styles of Wheels ranging in price
 from \$18.00 up to \$135.00.
 Largest exclusive Bicycle House between New York and
 Chicago. Wholesale and retail dealers. Write for catalogues.

STANDARD CYCLE CO.,
 MARTIN & STEVENS, Successors,
 588 Main Street, BUFFALO, N. Y.

POSITIVELY THE
LIGHTEST AND STRONG-
EST WHEEL BUILT
IN AMERICA.

MENT IN THE

TIC.

a ranging in price
o up to \$135.00.
n New York and
ite for catalogues.

E CO.,
Successors,
FALO, N. Y.



THE NAME NIAGARA.—The word Niagara is a household word all over the world. It is applied only to the locality, and is to-day the synonym for the ideal waterfall. It is of Indian origin, for the Indians once inhabited all this country, and much of the nomenclature of Western New York is traceable directly to them. Niagara is supposed to be borrowed from the language of the Iroquois, and means "The Thunder of the Waters." It was the name of a tribe, for it was an Indian custom to call their tribes from the most important natural feature of the country they inhabited, or to give the tribal name to such feature.

The first description that we have is that of Father Hennepin, published in 1678. We here quote a part of his description:

"A Description

"OF THE FALL OF THE RIVER NIAGARA, WHICH IS SAID TO BE
SEEN BETWEEN THE LAKE ONTARIO
AND THAT OF ERIE.

"Betwixt the Lakes *Ontario* and *Erie* there is a vast and
prodigious cadence of water, which falls down
after a surprising and astonishing manner,



NIAGARA RIVER AND GORGE. ❖

❖ ❖ RIVER VIEW TRAINS BY THE NEW YORK CENTRAL

NO VISIT to Niagara Falls is complete without the trip to Lewiston, which can be made so easily and quickly.

The Lewiston Branch of the New York Central extends from Niagara Falls along shelving rock over-looking the magnificent scenery of the Niagara Gorge, and in full view of Queenston Heights, the Whirlpool Rapids and Brock's Monument. River View trains, fitted with observation cars, are run at frequent intervals, connecting at Lewiston with a fine new steamer on Niagara River, making trips to Niagara-on-the-Lake, from which point connection is made for Youngstown, etc.

The New York Central has acquired control of a very desirable grove at Lewiston for excursion purposes, and special excursion rates will be quoted to Sunday Schools and Societies upon application to R. H. WAIT, Passenger and Ticket Agent, Niagara Falls, or to

EDSON J. WEEKS, General Agent, No. 1 Exchange St., Buffalo, N. Y.

JOHN M. TOUCEY, General Manager.

GEORGE H. DANIELS, General Passenger Agent.

✦
CENTRAL

n, which can
Niagara Falls
Gorge, and in
ment. River
connecting at
-on-the-Lake,
at Lewiston
Schools and
ent, Niagara

Buffalo, N. Y.
Passenger Agent.

insomuch that the universe does not afford its parallel. 'Tis true, *Italy* and *Suedeland* boast of such things; but we may well say that they are but sorry patterns when compared to this of which we now speak. At the foot of this horrible precipice, we meet with the River *Niagara*, which is not above a quarter of a league broad, but is wonderfully deep in some places. It is so rapid above this descent, that it violently hurries down the wild beasts while endeavoring to pass it to feed on the other side, they not being able to withstand the force of its Current, which inevitably casts them headlong above six hundred feet high.

"This wonderful Downfall is compounded of two cross-streams of Water and two falls, with an isle sloping along the middle of it. The waters which fall from this horrible Precipice, do foam and boyl after the most hideous manner imaginable, making an outrageous noise, more terrible than that of Thunder; for when the wind blows out of the South their dismal roaring may be heard more than Fifteen Leagues off."

The Niagara River is merely one link in the chain which conducts the waters of Lake Superior to the Atlantic. It is called the Niagara River, between the two lakes Erie and Ontario. When it leaves Lake Ontario, it is the River St. Lawrence, which is 700 miles long, and falls into the Gulf of St. Lawrence.

It is a part of the boundary line between the United States and Canada—so decreed by the Treaty of Ghent in 1815. By that treaty, the boundary line runs through the center of the Great Lakes, and through the deepest channel of the rivers. By this means over three-fourths of the



AMERICAN RAPIDS from the
Bridge

A. Neupert & Co.

... JOBBERS IN ...

PAPER HANGINGS,

FLOOR AND TABLE OIL CLOHTS,

CORTICENE, LINOLEUM, ROOM MOULDINGS.

MANUFACTURERS OF ALL SIZES OF

Window Shades.

464-466 Main St., and 271-273 Pearl St.,
BUFFALO, N. Y.

OUR long experience enables us to present a line of goods, which, in quality and superiority of design are second to none in the market. Our prices are as low as any first-class manufacturer, besides a considerable saving in freight.

Adams & White, +

... DEALERS IN ...

+ + **OFFICE SUPPLIES**

... STATIONERY. ...

PRINTERS AND . . .

BLANK BOOK MANUFACTURERS

.. 209, 211 and 213 Main St., BUFFALO, N. Y.

te, +

PPPLIES

Y. . .

FACTURERS

FALO, N. Y.



Goat Island

Lake Superior, the largest body of fresh water in the world; 355 miles long, 160 miles wide, 1,030 feet deep.

Lake Huron, 260 miles long, 100 miles wide, 1,000 feet deep.

Lake Michigan, 320 miles long, 70 miles wide, 1,000 feet deep.

Lake St. Clair, 49 miles long, 15 miles wide, 20 feet deep.

Lake Erie, 290 miles long, 65 miles wide, 84 feet deep.



Johnston Island

Several smaller lakes, with one hundred rivers, large and small, pour their waters this way, draining a country of more than one hundred and fifty thousand square miles. This is the drainage of almost half a continent, and whose remotest springs are 2,000 miles from the ocean.

With such a supply it is not surprising that the volume of the Niagara River is never noticeably diminished.

Through the mouth of the St. Lawrence

islands in the river, including all the important ones but one, belong to the United States. Of these islands there are in all thirty-six, of which Grand Island is the largest, and Goat Island the most famous.

In its course the river falls 336 feet, as follows: From Lake Erie to the Rapids above the falls, 15 feet; in the Rapids, 55 feet; at the Falls, 161 feet; from falls to Lewiston, 98 feet; from Lewiston to Lake Ontario, 7 feet. Its sources are:



Mementos



Squaws with Deadwork

W. H. H. NEWMAN & CO., ❖ ❖

— DEALERS IN —

❖ IRON AND STEEL BOILER PLATE

————— BOILER TUBES, RIVETS, —————

Tank and Sheet Iron, Angle Iron,

TIN PLATE, METALS, Galvanized Iron, Patent Planished Iron, Sheet
Lead, Zinc, Ingot Copper, Antimony, Babbit Metal, Etc., Etc.

————— 70 MAIN STREET, —————

===== BUFFALO, N. Y.

❖
LATE

,
ron, Sheet
r, Pig Tin.

N. Y.



THE CANADIAN OR HORSESHOE FALLS AS SEEN FROM DECK OF STEAMER "MAID OF THE MIST."

* Niagara Souvenir *
SPOONS.



[STERLING SILVER.]

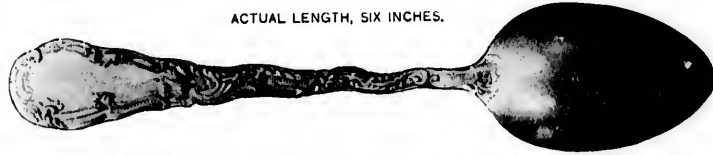
The front of the handle shows, in relief, Prospect Point, the American and Horse-shoe Falls, with Goat Island between, and the Rapids flowing down the stem. The back is in a beautiful repousse decoration.

Orange Spoon.



ACTUAL LENGTH, SIX INCHES.

Tea Spoon.



ACTUAL LENGTH, SIX INCHES.

DESCRIPTIVE PRICE-LIST

MAILED
 TO ANY ADDRESS
 ON
 APPLICATION.

FOR SALE IN

TEA SPOONS,
 COFFEE SPOONS,
 ORANGE SPOONS,
 SUGAR SPOONS,

BON-BON SPOONS,
 LETTER OPENERS, ETC.

SHOWING FRONT OF
 HANDLE.

SHOWING BACK OF
 HANDLE.

W. H. GLENNY, SONS & CO.

251-257 MAIN STREET, - - - BUFFALO, N. Y.

And by the Local Dealers at Niagara Falls.

W. H. GLENNY, SONS & CO.

251-257 MAIN STREET, - - - BUFFALO, N. Y.

And by the Local Dealers at Niagara Falls.



more fresh water pours into the ocean than through the mouth, probably, of any one river in the world.

The river over the American Fall falls 159 feet, and over the Canadian 165, the difference being caused by the greater accumulation of rock at the base of the former.

The Niagara is never frozen over, but it accumulates more ice than any other river in the world.

The average depth of the river from Lake Erie to the Falls is about 20 feet. In some places it is over two miles wide. At the narrowest point near the Whirlpool, the current is above 40 miles per hour, and at the widest part about four miles per hour.

Between the Falls and the Whirlpool, the depth varies from 75 to 200 feet. At the Whirlpool Rapids it is estimated at 250 feet; in the Whirlpool at 400. But it should be recalled that this is the depth of the water alone. The mass of stone, gravel, shale, etc., which in one way and another has been carried into the channel, lies below the water and above the original bottom of the gorge, which, therefore, is probably as deep again. Various estimates have been given of the amount of water going over the Falls. A point 300 feet wide below the Falls being selected, the depth estimated, and the velocity of the current known, it was estimated that 1,500,000 cubic feet passed that point every minute.

Another estimate says 100,000,000 of tons pass through the Whirlpool every hour.

Judge DeVeaux estimated that 5,000,000,000 barrels go over every 24 hours; 211,836,853 barrels an hour; 3,559,614 barrels a minute; 58,343 barrels each second.

FACIAL BLEMISHES.

Superfluous Hairs Permanently
—REMOVED—



By an Unfailing and Entirely New Process.
BIRTH Marks, Moles, Warts, Tumors,
Redness of the Nose, Scars and all im-
perfections of the skin removed from
any part of the body without cutting, pain,
injury or scar. Corns, Bunions, Bad Nails,
Excessive Perspiration, and all diseases
that the feet or hands are subject to, cured.
Private parlors for Ladies. All correspond-
ence strictly private.

DR. D. H. VAN VRANKEN,
Dermatologist and Chiropodist.
227 Pearl St., BUFFALO, N. Y.
Write for Circular.

A GREATER part of the Drawings
in this little volume were made by
C. W. Sumner, the artist. Should you
desire drawings or cuts of your house in-
terior or exterior, or any part of your
business, machinery, etc., call or write
Mr. Sumner at Room 19, Morgan Build-
ing, Buffalo, N. Y.

Niagara Envelope Manufactory



COR. SWAN and ELLICOTT STREETS,

OFFICE, 34 ELLICOTT ST.

JOHN E. MARSHALL, Manager.

*** L. GOLDSTEIN'S ***

ONE PRICE . . .
. . . SHOE HOUSE

Southeast Cor. Main and Eagle Sts.,

Opposite the Iroquois Hotel. BUFFALO, N. Y.

factory



STREETS,

ST.

anager.

'S *

HOUSE

gle Sts.,

LO, N. Y.

The Falls are in latitude 43° 6" north; longitude 2° 5" west from Washington, or 79° 5" west from Greenwich.

The Horseshoe Fall has an aggregate length of 2,000 feet; the American Fall about 800 feet.

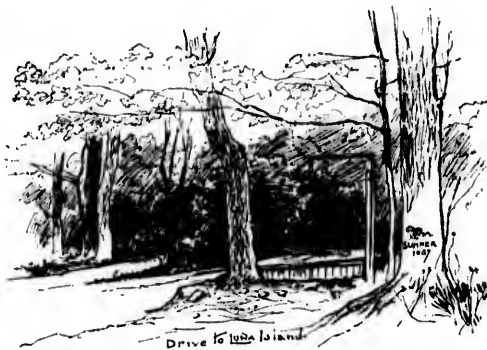
The view of the Falls at sunrise and at sunset is particularly grand.

The moonlight views of Niagara are indescribably weird and delicate, and it will repay the traveler to journey far to see them. Solar bows formed by the reflection of the sun on the spray can be seen on any bright day, when the visitor is between the sun and the spray. Lunar bows, seen at night, are formed in a similar way by lunar beams. The spectator must be similarly placed.

The roar of the Falls can be heard a long way if the wind blows toward the listener. It has been heard at Toronto, 44 miles, and at Buffalo, 22 miles. When the wind blows from the listener, the roar is hardly heard, even when one is within a few feet of the cataract.

A loud roaring of the Falls is said to indicate rain. The rain winds come from the west, and a west wind brings the sound over the village.

Niagara Falls in winter is a scene that no pen can describe. The ice bridges are simply accumulations of ice that fill the gorge below the Falls. The ice is often 30 feet thick, and its surface is as uneven as it is possible. These so-called bridges can be crossed with safety. Sometimes they extend up and down stream for half a mile, and several winters it has



J. H. ULLENBRUCH, ❖

+ + Mfg Optician.



EYES PROPERLY TESTED AND FITTED.
SATISFACTION GUARANTEED.

A FINE LINE OF

**Field, Marine and Tourist Glasses,*

BAROMETERS, THERMOMETERS,
TELESCOPES, OPTICAL GOODS, Etc.

My own importation at low prices.

274 Main Street, near Swan,

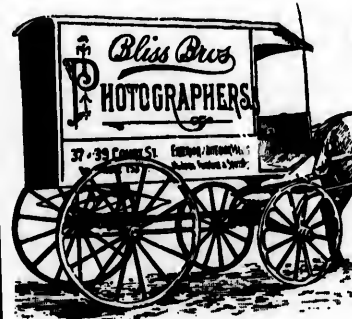
————— **BUFFALO, N. Y.**

BLISS BRO'S, + +

❖ Portrait and View Photographers.

Portrait Studio, | Commercial . . .
368 MAIN STREET, + | . . . Gallery,
Corner Eagle. | 87 COURT STREET,

BUFFALO, N. Y.



SPECIAL . . .
ATTENTION

—GIVEN TO—

RAILWAY, . .

—AND—

COMMERCIAL

Work out of the
City.

been
to Go
Many
spray
except
jams,
N
etc.
full li
unsee
no kn
of Jul
betwe
draw
Boats
him i
the re



ographers.

cial . . .
Gallery,
Y STREET,
V.

ECIAL . . .
ATTENTION

—GIVEN TO—
ILWAY'. . .
—AND—
COMMERCIAL

Work out of the
City.

been possible to walk on these bridges up the centre of the river, clear past the American Fall, and to Goat Island, mounting the Biddle Stairs, or returning by the same route to the Ferry Stairs. Many people have taken this foolhardy journey. The ice that collects on the trees is formed by the spray freezing layer by layer, and is very hard, and pure white, and glistens in the sunlight with exceptional brightness. No such ice scenery—on the banks for long icicles, in the river for ice jams, on the trees for delicate and fantastically shaped ice tracery—can be found elsewhere.

Numberless accidents have happened at Niagara—suicides, murders, drowning, over the Falls, etc. One or two accidents are specially mentioned in this work, but it would be useless to give a full list of even known accidents. The number of those who have taken the fatal plunge at night, unseen, save by the "Eye that sleepeth not," can never be ascertained. Some years there will be no known accident; again, there have been twelve in a single season. A famous accident was that of July 19, 1853. Early in the morning a man was seen on a rock in the American Rapids, midway between the Falls and Goat Island. He proved to be Mr. Avery, who in crossing the river had been drawn into the Rapids and caught there. People flocked from all over the country to see him. Boats and ropes were lowered. Several boats were lost and two sank near him. Food was sent to him in tin cans. A raft was made and lowered, and reached him safely. He got on it and seized the ropes. It was floated over to Chapin Island, but caught there. A boat was lowered and touched



BAKER, JONES & CO., ❖ ❖

— STEAM —

BOOK AND JOB PRINTERS

Binders and Blank Book Manufacturers, +

ENGRAVERS AND ELECTROTYPERS,

220 and 222 WASHINGTON STREET, - BUFFALO, N. Y.

RAILROAD TICKET PRINTING A SPECIALTY.

every
point
midw
wheel
Wales
balan
have
have
S
rope.

ERS

O, N. Y.



AMERICAN FALLS

every eight feet, stays were attached to his rope, and running from each shore to near the centre of the span; and at each point two ropes diverged, one on either side to the nearest bank. Across the rope at this point, and afterward at a point midway between the old Suspension Bridge and the Falls, he repeatedly crossed the chasm, performing tricks, at one time wheeling a wheelbarrow; once carrying a man on his back; once with peach baskets on his feet (this when the Prince of Wales was a spectator), and once in the night, when an attempt was made to light up the chasm. He carried a heavy balance pole, by which he steadied himself. He was a man of iron nerve, and could he have obtained permission, would have stretched his rope from the Terrapin Rocks to the opposite shore, and thus, in the midst of the spray and rainbows, have assayed to cross the yawning gulf, and he probably would have succeeded.

Since that time not less than three men and one woman have performed the feat of walking over the chasm on a tight rope.

the raft. Avery stepped forward to get into it. The raft tipped and he fell into the river and was carried over the Falls after an eighteen-hour struggle for life. Of late years we think accidents are fewer, and suicides much more frequent.

Two or three events here deserve more than a passing mention. The first of these was the feat of crossing the river below the Falls on a tight rope, performed in 1859 by Blondin, a Frenchman. He first stretched his rope, a two-inch cable, across the river below the Old Suspension Bridge. About

Ice Cream Soda, ❖

Bonbons —————+

❖ ❖ AND Chocolates

DO NOT FAIL TO GET A BOX FOR
..... THE ONE YOU LOVE.

Teague & Co.

302 Main Street,

BUFFALO, N. Y.

ROSES, —————↔

Cut flowers, . . .

Artistic Designs. . .

ADAMS —————
AND NOLAN,

◇ FLORISTS ◇

302 Main Street, BUFFALO, N. Y.

MAIL AND TELEGRAPH ORDERS RECEIVE
..... PROMPT ATTENTION.

Telephone No. 123.

←

..
15. . .

DLAN,

◇

FALO, N. Y.

RECEIVE
TENTION.

3.



THE CANADIAN OR HORSESHOE FALLS AS SEEN FROM CANADIAN SIDE, GOAT ISLAND IN THE DISTANCE.

OUR DRUMMER



**ELECTROTYPING
AND
ENGRAVING**

**Who does yours?
WHY NOT GIVE US A TRIAL?**

We have established in Buffalo one of the Largest and Most Complete plants in this country. Our Machinery is of the very latest improvement. With our immense facilities we are able to give you

QUALITY. THE VERY BEST

AND "PRICES" THE LOWEST.

Address,

Buffalo Electrotpe and Engraving Co.,

WILHELM, HAAS & KOEHLER, Proprietors.

We make a specialty of Engraving Railroad Maps and Out-line Engraving of all kinds. Also Photo Zink Etching and Wood Engraving.

Cor. Wells and Carroll Streets, Buffalo, N. Y.

Telephone 1632.

Take Passenger Elevator.

IF YOU CONTEMPLATE A

TRIP ABROAD

WRITE OR CALL ON



WATTLES, DYKSTRA & CO.,

EUROPEAN

Steamship and Tourist Agts.

136 Exchange Street, (Arlington Hotel),

BUFFALO, N. Y.

Summer Tours down the St. Lawrence by Steam.

ALL ON

CO.,

Agts.

(Hotel),

by Steam.



American Fall
from Goal Island



Goal Island of old



Park to Prospect



Bridge to Prospect Island

In 1873, a fellow, Belleni by name, stretched a rope from opposite the Clifton House to Prospect Park. Walking to the centre of the rope, he three times leaped off into space and sank into the river below, a distance of 200 feet. He had a rubber cord an inch in diameter and twelve feet long constructed, one end being securely fastened to the rope. Holding the other end firmly in his descent the tension served to hold him in an upright position. The third time the cord broke and entangled his feet, so that below water he was tightly bound. He sank so deep that he nearly suffocated. He was picked up by the boat which was in readiness, but in an exhausted condition.

In 1878, after duly advertising the fact, a man named Peer dropped from the centre of the New Suspension Bridge into the river. The platform by which he hung by his hands while posing himself is still attached to the bridge, beyond the rail in the center of the bridge, on the side towards the Falls. He performed the feat in safety.

JOHN G. SEEGER,
 — THE PROMPT —
FURNITURE AND CARPET STORE

THE BEST SPRING MADE

— DEALER IN —
Baby Carriages, Refrigerators, Curtains, Etc.

122, 124 and 126 East Genesee Street, BUFFALO, N. Y.

BEES FROM \$2.25 UPWARDS

39¢

\$1.50



But the most daring feat was that performed June 15, 1861, by J. R. Robinson, a brave and noble man, and one whose name for deeds of daring and for assistance rendered to men who were endangered in the Rapids of the Niagara will ever be fondly cherished here.

In 1846, a small steamer, called the "Maid of the Mist," was built below the Falls, and made regular trips up close to the Falls and back. In 1854, a larger and better boat, 90 feet long, was built, and continued the business successfully. In 1861, being restricted to the Canadian shore for passengers, she did not pay, and as the Sheriff was about to levy on her for debt, it was necessary to get her away. There was but one route. But who would pilot her? No one but Robinson, and he agreed to deliver her at Lake Ontario, and he did.

Two men went with him, and on the date above they started. In the Whirlpool Rapids the boat was terribly battered, and her smokestack torn off, the men being knocked down and powerless. When she reached the Whirlpool, Robinson seized the tiller and, before she was sucked into any of the eddies, guided her into the outlet, whence through the rushing, dashing waters she sped like a bird, and reached Lewiston and quiet waters in safety. Robinson is said to have received \$500 for his services during the 20 minutes intervening between leaving the ferry stairs and their arrival at Lewiston.

HOW THE FALLS WERE MADE FREE.—In the summer of 1878, Lord Dufferin, Governor-General of Canada, had a conversation with Governor Lucius Robinson of the State of New York, con-

To the Traveling Public, . .



It will pay you when in

. . BUFFALO, N. Y.

—To Stop At—

+ WM. COULSON'S DRUG STORE,

180 Seneca Street, Corner Michigan.

CONSTANTLY on hand a large stock of Drugs, Patent Medicines—Perfumery and all Druggists' Sundry Goods. Physicians' Supplies a specialty, and prompt attention to orders by mail for Trusses, Elastic Stockings, Bandages, Crutches, etc. *ORDERS SOLICITED.*

MANUFACTURERS OF

COULSON'S

BEEF IRON WINE, 50c.
 COUGH CURE, 25c.
 SP. HYPOPHOS CO., 1.00
 COMP. SYRUP SARSAP, 75c.
 EMULSION COD LIVER OIL, 60c.
 BAKER'S SURE CURE PILE SUPPOSITORIES, 50c.

THE U. S. CORN KILLER, 25c.

All of the above preparations guaranteed and orders solicited.
 Pile Suppositories and U. S. Corn Killer sent by mail on receipt of price.

DIAMONDS +

I MAKE A SPECIALTY OF FINE DIAMONDS, LOOSE AND MOUNTED. ALSO, EVERYTHING CONNECTED WITH A FIRST-CLASS JEWELRY ESTABLISHMENT.

I SELL THE

EASTMAN KODAK . . .

—AT—

. . . MANUFACTURER'S PRICES.

T. C. TANKE,

411 Main Street, corner Clinton,

BUFFALO, N. Y.

cerning
 reckone
 better s
 Lord Du
 Society
 October
 referred
 attentio
 Robins
 lowing
 mission
 appoint
 adjoining
 the nec
 for Lor
 idea; A
 son des
 free. A
 become
 sentime
 Lord D
 of Onta
 of the
 was fai
 may se
 form of
 of this

OF FINE
MOUNTED.
CONNECTED
JEWELRY

'S PRICES.

KE,

Clinton,

LO, N. Y.

cerning Niagara's fallen estate, and from this conversation is reckoned the beginning of official action towards bringing about a better state of things. The idea was first publicly spoken of by Lord Dufferin in a speech delivered in Toronto before the Ontario Society of Artists, on September 26, 1878. In the following October, subsequent to the conversation with Governor Robinson referred to, Lord Dufferin formally brought the matter to the attention of the New York State authorities in a letter to Governor Robinson, who laid the project before the Legislature in the following January, and recommended the appointment of a commission to consider the subject. A commission was accordingly appointed. Its report recommended the acquisition of the lands adjoining the Falls, and the appointment of a commission to take the necessary legal measures. Canadians are justified in claiming for Lord Dufferin the credit of being the agitator of the free park idea; Americans may continue to maintain that Governor Robinson deserves the honor of taking the first step to make the Falls free. As a matter of fact, all that either of them did was to become impressed (rather tardily than otherwise) with the public sentiment in the matter, and to recommend legislative action. Lord Dufferin urged the matter upon the Provincial Government of Ontario; Governor Robinson brought it before the Legislature of the State of New York; and the slow machinery of legislation was fairly set at work on both sides of the river. Strange as it may seem, determined opposition was encountered, both in the form of private interests and legislative indifference. A feature of this battle, which was waged against official hesitancy and



HOWARD H. BAKER & CO.,
SHIP CHANDLERS.

Wholesale and Retail Dealers in

MARINE HARDWARE,
CORDAGE, BLOCKS, TWINES,
COTTON DUCK,
PAINTS, OILS,
NAVAL STORES,
ANCHORS and CHAINS,
BOAT OARS, TENTS,
AWNINGS and

NAUTICAL INSTRUMENTS.

We carry a full line of Nautical Instruments, including the Celebrated French make of Aneroid Barometers and Marine, Field and Opera Glasses of our own importation.

FLAGS OF ALL KINDS ON HAND AND MADE TO ORDER.

HOWARD H. BAKER & CO.,
18 to 26 Terrace, BUFFALO, N. Y.

REVERE RUBBER CO.

MANUFACTURERS OF

Belting, Hose
- - - AND - - -
. . . . **Packing**

Of every description,

Also MOULDED GOODS.

JEWELL LEATHER BELT.

74 Pearl St., Buffalo, N. Y.

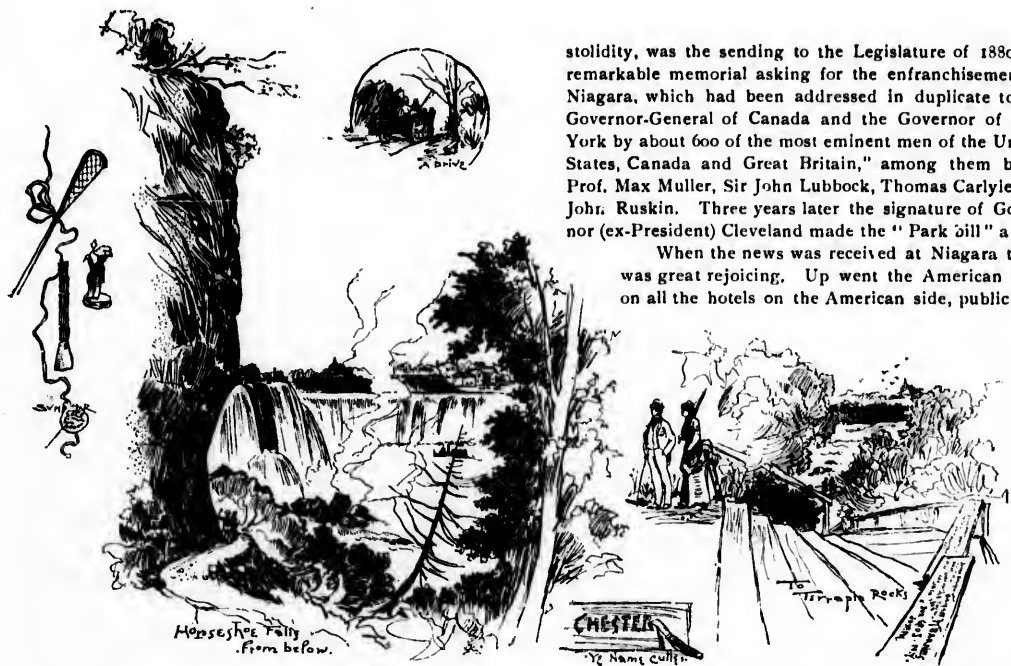
R CO.

acking

GOODS.

R BELT.

o, N. Y.



stolidity, was the sending to the Legislature of 1880 "a remarkable memorial asking for the enfranchisement of Niagara, which had been addressed in duplicate to the Governor-General of Canada and the Governor of New York by about 600 of the most eminent men of the United States, Canada and Great Britain," among them being Prof. Max Muller, Sir John Lubbock, Thomas Carlyle and John Ruskin. Three years later the signature of Governor (ex-President) Cleveland made the "Park bill" a law.

When the news was received at Niagara there was great rejoicing. Up went the American flags on all the hotels on the American side, public and

OIL WELL SUPPLY COMPANY, OIL CITY,
PA.

Manufacturers and Dealers in

OIL,
ARTESIAN
AND
GAS WELL
SUPPLIES,



Manufacturers of the Celebrated

“MOGUL”
DRILLING ENGINE
AND
“RED DOME”
BOILER.

FACTORIES AT

Oil City, Pittsburgh and Bradford, Pa., Van Wort, O., and Bridgeport, Conn.

CITY,
PA.

the Celebrated

GUL"

ENGINE

ND

"DOME"

LER.

port, Conn.



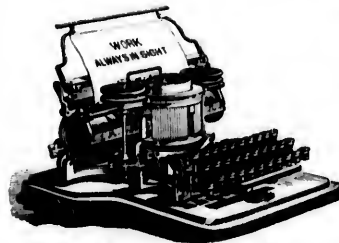
GENERAL VIEW OF NIAGARA AS SEEN FROM NEW SUSPENSION BRIDGE.

The · Hammond · Typewriter

AN AWARD BEYOND THE REACH
..... OF COMPETITION.

"The Elliott-Cresson Gold Medal."

LEADING POINTS:



HAMMOND TYPEWRITER,
With Universal Key-Board.

SEND FOR CATALOGUE.

THE HAMMOND TYPEWRITER CO.,
14 E. Seneca Street, BUFFALO, N. Y.

SPEED, Highest Record.
ALIGNMENT, Perfect and Permanent.
TYPE, Instantly Interchangeable (all Styles and Languages.)
IMPRESSION, Uniform, being Independent of touch.
PAPER, Takes any width, also, 25 yards in length.

QUEEN CITY
STAINED GLASS
WORKS.

G. M. BOOTH,
67 FRANKLIN STREET, BUFFALO, N. Y.
NEAR CITY HALL.

..... MANUFACTURER OF

Church and Household Art Glass
PLAIN LEADED GLASS,
Memorial Windows
. . . . *and Mosaic Work.*

IMPORTED AND AMERICAN

◁ PLATE AND SHEET GLASS,
BEVEL PLATE. ▷

Write for Estimates.

ITY

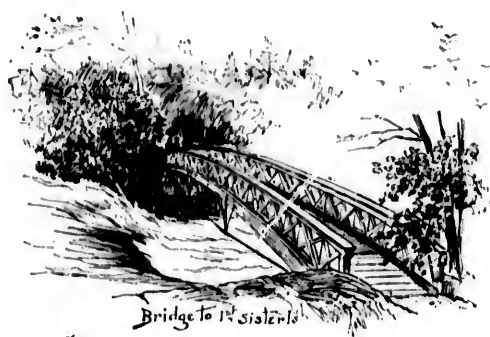
v. 1

rt Glass

ASS,

Work.

T GLASS,



Bridge to 1st State Is.



Little Brother Is.



private buildings and places of business. The hotels on the Canadian side joined their American cousins in displaying their enthusiasm, by hoisting the Union Jack. On a memorable 15th of July, 1885, the New York State Park at Niagara Falls was opened with ceremony, attended by 60,000 people, and declared free to all the world. The 115 acres which constitute the Park were bought from private owners, after long appraisal proceedings, for \$1,433,429.50.

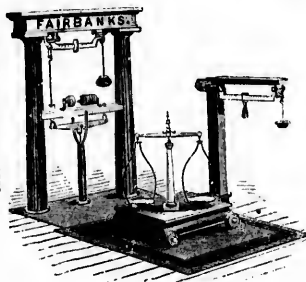
For the information of those patrons of the Western New York & Pennsylvania R. R., who intend to visit the Falls on one of the many excursions announced from different points on the road, we give the following brief description of the various places of interest:



Miniature Dock
1st State Is.

FAIRBANKS'

Asbestos Disc Globe and Angle Valves
 ASBESTOS PACKED BRASS
 AND IRON COCKS.
 VULCANIZED ASBESTOS SHEET
 AND ROPE PACKING.



Hancock Inspirators and Ejectors.
 WOOD SPIRIT
 PULLEYS.

SCALES.

THE STANDARD.

SCALES FOR
 STORES, MILLS and ELEVATORS, GRAIN WARE-HOUSES,
 FARMERS, COAL DEALERS, MINERS,
 CATTLE DEALERS, BUTCHERS,
 GROCERS, DRUGGISTS, Etc.

FAIRBANKS & CO.,

216 MAIN STREET, BUFFALO, N. Y.

A. C. GIBSON,

MANUFACTURER OF AND DEALER IN EVERY DESCRIPTION OF

RUBBER HAND STAMPS

And Other

—AND—

Stamp Manufacturers' Supplies.



- CHECK PROTECTORS,
- NUMBERING MACHINES,
- METAL BODIED
- OR—
- SOLID RUBBER TYPE
- DATING STAMPS,
- BRASS WHEEL
- RIBBON STAMPS,
- STENCILS,
- WAX SEALS,
- SEAL PRESSES,
- STEEL STAMPS,
- PRINTING WHEELS, Etc.

WE HAVE in stock as great a variety of Goods in our line as is kept by any other stamp supply house in the United States. Let us know what you are in need of, we will make prices low as any.

ENT,
DESCRIPTION OF
STAMPS
—
ers' Supplies.

ROTECTORS,
RING MACHINES,
DDIED
—OR—
RUBBER TYPE
DATING STAMPS,
HEEL
RIBBON STAMPS,
X SEALS,
SEAL PRESSES,
HEEL STAMPS,
G WHEELS, Etc.

in our line as is kept
States. Let us know
any.



POINTS OF INTEREST.

GOAT ISLAND.—The "*Goat Island Group*," so-called, consists of a large island standing on the verge of a cliff over which the cataract pours, and dividing the river in such a manner as to form from its waters two Falls—the one being known as the "*American*," and the other as the "*Horseshoe or Canadian Falls*," and includes several other smaller islands, notably Bath Island, Luna Island, Terrapin Rocks, Three Sisters Islands, and ten others not yet accessible by bridges.

Goat Island was, in ancient times, one of the favorite burying grounds of the Indians, and yet preserves traces of their funeral rites. It was particularly revered as the spot where chiefs and noted warriors were buried.

Crossing the first bridge, from which, both up and down stream, is to be had one of the grandest views of the Rapids, you reach Bath Island, some two acres in extent. A few rods below and near the Falls, is Chapin Island, so-called because a man of that



ESTABLISHED JULY 1, 1879.

∞ H. HERRMANN, ∞

(Manufacturer for the U. S. Government.)

—MANUFACTURER OF—

SURGICAL AND ORTHOPEDICAL INSTRUMENTS
ARTIFICIAL LIMBS, Etc.



SURGICAL INSTRUMENTS, LEG BRACES, CLUB-
FOOT SHOES, TRUSSES, DEFORMITY APPLIANCES
OF EVERY DESCRIPTION, SUSPENSORIES, CHEST PRO-
TECTORS, SHOULDER BRACES, ELASTIC STOCKINGS,
CRUTCHES, BANDAGES OF EVERY DESCRIPTION, ETC.

PHOTOGRAPHED FROM LIFE.



Before Treatment.

After Treatment.

MECHANICAL TREATMENT OF ALL
DEFORMITIES AND RUPTURES

A SPECIALTY. A SURE CURE GUARANTEED.

No. 9 West Huron Street, BUFFALO, N. Y.

WRITE FOR ILLUSTRATED CATALOGUE.

name,
rescue
A
more
Advan
D
the fa
F
—whi
excell
a fine

OM LIFE.



After Treatment.

UPTURES

D.
CO, N. Y.

name, in 1849, while repairing the bridge fell into the river, but succeeded in reaching that island, from which he was soon rescued. Cross the next bridge and you are at Goat Island.

Ascend the hill and turn to the right—by taking this route you get the less impressive view of the Falls at first, and the more grand and imposing last—and you get more time in which to appreciate the magnificent grandeur and awful sublimity. Advancing for a few rods through the forest, you reach one of the most charming views of Niagara.

Descending the stairs on what, from its shape, is called "*Hog's Back*," you stand next to the Little Fall, beneath which is the famous Cave of the Winds; and crossing the little bridge at your right you reach Luna Island.

From the further point, protected by an iron rail, we see the most desirable near view of the American Falls and Rapids—which are so close that it is possible to dip the hand into the rushing tide passing over the verge. Here, too, one gets an excellent view of the debris of rock and shale deposited by the action of the torrent at the foot of the American Fall, and also a fine perspective of the gorge below.



This spot is called Luna Island, because the lunar bow is seen here to the best advantage.

It has often been remarked by strangers that this island trembles, which is undoubtedly true; but the impression is heightened by imagination.

It was while climbing over the rocks directly under this Island that Dr. Hungerford, of Troy, N. Y., was killed in the spring of 1839 by the crumbling of a portion of the rock from above. This is the only accident that ever occurred at Niagara, by the falling of rock.

LOUIS W. GAY,

34 and 36 Washington St., BUFFALO, N. Y.

— JOBBER IN —

ENGINEERS' AND PLUMBERS' SUPPLIES

Wrought Iron Pipe, Brass Goods, Rivets,

Boiler Tubes, Cast and Malleable Fittings,

Bar Iron, Cotton, Rubber and Leather Belting.

— AGENT FOR —

*Gutta Percha & Rubber Mfg. Co., Scott's Patent
Gate Valve, Dannemora Tool Steel, Magnolia Metal,*

SPENCE HOT-WATER HEATER.

Write for Prices.

BEALS & BROWN,

SUCCESSORS TO PRATT & CO.

Iron, Steel, Nails,

HARDWARE, BOLTS, NUTS AND WASHERS.

Contractors', Mechanics', Shop - -

- - and Manufacturers' Supplies, Etc.

AT THE OLD STAND,

Terrace Square, BUFFALO, N. Y.

Branch Store, Cor. Seneca and Washington Sts.

Or
family
in fine
of Mr.
sudden
before
the san
wise re
Falls.
Re
called
the Ca
United



Cor

WN,

ails,

WASHERS.

plies, Etc.

LO, N. Y.

ngton Sts.

On the northern shore of this island, a few feet above the brink, is a spot of mournful memory. On June 21, 1849, the family of Mr. Deforest, of Buffalo, with a friend, Mr. Chas. Addington, were viewing the scenery from this point. The party in fine spirits were about leaving the island, when Mr. Addington advanced playfully to Miss Annette, the little daughter of Mr. Deforest, saying, "I am going to throw you in," at the same time lifting her over the edge of the water. With a sudden impulse of fear the child sprang from his hands into the river. With a shriek the young man sprang to save her, but before those on shore had time to speak or move, they had passed over the precipice. The young lady's remains were found the same afternoon in the Cave of the winds; and in a few days afterward the body of the gallant but fated man was likewise recovered and committed to the village cemetery. This is, perhaps, the most touching casualty that ever occurred at the Falls.

Reaching the top of the bank, proceed straight ahead, and you soon catch the first glimpse of the "Horseshoe Falls," so called from its resemblance to that article. The building before you contains the dressing rooms for the Cave of the winds, and leads to the famous Biddle Stairs, so called from the President of the United States Bank, Nicholas Biddle, who, in 1829, contributed a sum of money for their erection.



Canadian Rapids
from Sister Is.

FISCHER 
 PIANOS

85,000 IN USE.

A FIRST-CLASS AND RELIABLE
PIANO AT A MEDIUM PRICE.

EVERY INSTRUMENT WARRANTED
FOR FIVE YEARS.

DENTON & COTTIER,

269 Main Street,

BUFFALO, N. Y.

ESTABLISHED 1836.

NICKLIS & CO.,

IMPORTING . . .
. . . . TAILORS

27 and 29 Main Street, BUFFALO, N. Y.

LARGEST AND OLDEST TAILORING ES-
TABLISHMENT IN WESTERN NEW YORK.
MAIN STREET CARS PASS THE DOOR.
DIRECTLY OPPOSITE THE D., L. & W.
PASSENGER DEPOT.

WE DO AN EXTENSIVE BUSINESS AND ARE
ABLE TO MAKE THE LOWEST PRICES.

NICKLIS & CO.

0.,

ORS

0, N. Y.

NG ES-

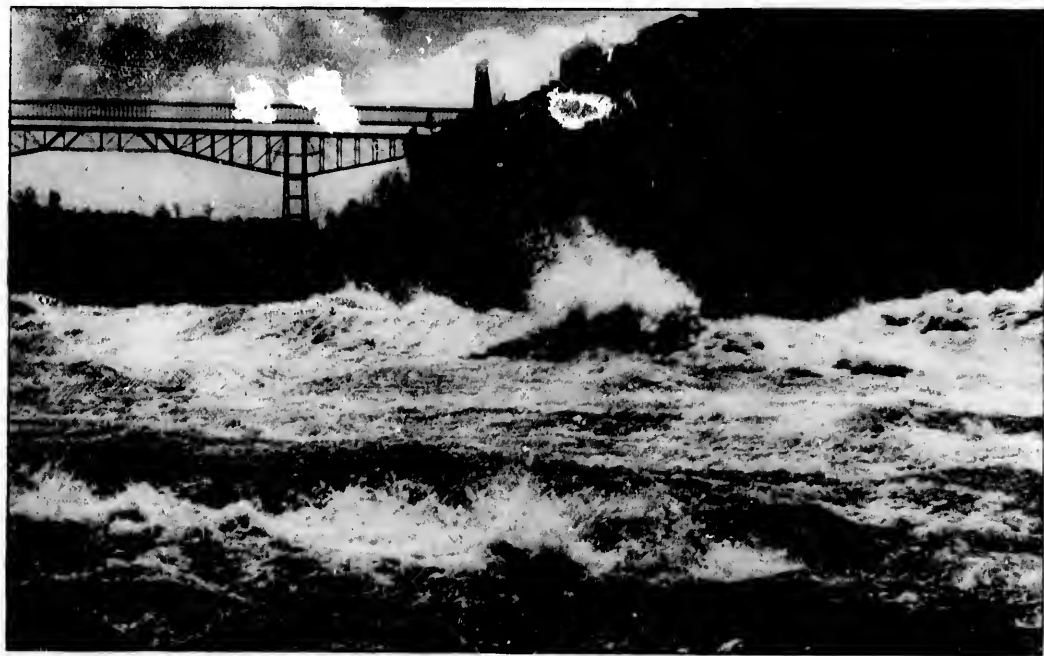
YORK.

DOOR.

& W.

S AND ARE
T PRICES.

CO.



THE WHIRLPOOL RAPIDS AS SEEN FROM THE AMERICAN SIDE.

C. W. MILLER'S COACH AND BAGGAGE EXPRESS

UNION RAILROAD TICKET OFFICE.

No. 377 Main Street, cor. of Eagle Street. Telephone No. 1319.

THROUGH AND LOCAL TICKETS VIA ALL RAILROADS.

BAGGAGE CALLED FOR AND CHECKED FROM HOTELS OR PRIVATE RESIDENCES TO DESTINATION.

Mammoth Moving Wagons a Specialty. MOVING MADE EASY, at reasonable rates. The largest, finest and most complete assortment of Coaches, Coupes, Broughams, Victorias, etc., always on hand for Riding, Weddings, Parties, Funerals, etc.

GENTLEMANLY AND RELIABLE AGENTS.

THE public will find on all through trains running into the city trustworthy agents, who will furnish carriages and omnibuses, and transfer baggage to any part of the city. Also, persons arriving in the city by local trains will find at my offices in all depots direct telephone communication (telephone free) with my stables, by which carriages, coupes, etc., can be procured at a few moments' notice, for shopping, riding, etc.

Down-Town Stable, Nos. 202 to 216 Pearl Street.
OPEN DAY AND NIGHT. TELEPHONE No. 435.

Up-Town Stable, Nos. 535 and 537 Delaware Avenue.
TELEPHONE No. 1341.

ALL ORDERS CAREFULLY AND PROMPTLY EXECUTED.

General Office, No. 377 Main Street, Buffalo, N. Y.

C. W. MILLER, Proprietor.



At
land h
length
Terrap
Th
from W
lodged
around
taken t
As
Th
It was
top, wi

ESS

No. 1319.

INATION.

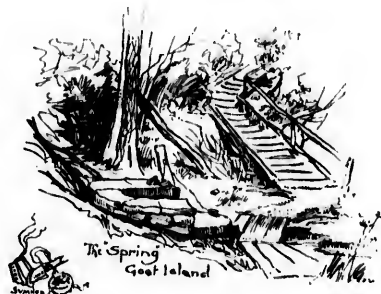
rates. The
nt of Coaches,

and omnibuses,
at my offices
... can be pro-

street.

venue.

, Proprietor.



Shortly after their erection, the well known Sam Patch, whose diving propensities made his name a household word, made his famous leap of 100 feet into the river, in 1820. Midway between the foot of these stairs and the Canadian Fall he erected a scaffold 96 feet high, from which he made his successful leap. He repeated it successfully the same year; then went to the Genesee Falls, at Rochester, and jumped and was killed. He never rose to the surface after he jumped, and his body was not found for some days, and then miles away.

After leaving the Biddle Stairs, follow the path along the bank, and you soon reach the spot where a huge slice of the land has fallen. One slide occurred in 1843, another in 1847. Within 20 years more than 20 feet in width and 400 feet in length have gone down. Proceed a little further and you stand above and in full view of the Canadian Fall. Go down the Terrapin rocks; it may be tiresome, but it will amply repay you.

The bridge is subject to the action of the spray; care should be taken in crossing it. In the winter of 1852, a gentleman from West Troy, N. Y., while crossing to the tower, fell into the current and was carried into the verge of the Fall, where he lodged between two rocks. He was discovered by two citizens, who rescued him by throwing out lines, which he fastened around his body just in time, and was hauled in almost senseless. He remained speechless for several hours after being taken to his hotel.

As you stand inside the iron rail and overlook the vast gulf below, you are in the very center of the Niagara.

The old Terrapin Tower, also called Horseshoe or Prospect Tower, of which we give an illustration, stood on these rocks. It was built in 1833, of stones gathered in the vicinity. A round tower, 45 feet high, 12 feet diameter at base, and eight feet at top, with a gallery near the upper end—a rugged structure, in perfect harmony with its surroundings. It was blown up by

J. M. BOSTWICK, President.

H. C. BALCOM, Treas. and Manager.

Niagara Manufacturing Co.

MANUFACTURERS OF

Jewelers' Findings.

Specialties:

*Fine Trays, Plush, Velvet
and Morocco Cases.*

*Tags, Cards, Wood Mail-
ing and Express
Boxes.*

FINE PAPER BOXES.

Sole Manufacturers of

FOWLER'S

Patent Material

CABINET.

13, 15, 17 and 19 Gull Street,

Send for Illustrated Catalogue.

BUFFALO, N. Y.

H. C. BALCOM,
President and Treas.

Pine, Hemlock,
Hardwood

Rough,
Dressed
and Matched
Flooring.

Siding,
Ceiling,

Sheating,
Lath,
Shingles,

Fence Posts, Etc.
Tennessee

Red Cedar Posts,
Railroad Ties,
Paling.

Bills Sawed to
Order.

C. B. LYNES,
Secretary.

G. W. SMITH LUMBER CO.

(Successors to G. W. Smith & Sons.)
Established 1850.

MANUFACTURERS OF ALL KINDS OF

Lumber and Shingles

**PINE and HEMLOCK LUMBER,
LATH and GEORGIA PINE.**

OFFICE.

132 Clinton Street,
Yards 1075 to 1181 Clinton Street,
Near Erie Railroad Crossing.

BUFFALO, N. Y.

Write for Quotations.

Telephone Calls 724 and 1325 D.

E. B. LYNES,
Secretary.

LUMBER CO.

(Sons.)

L KINDS OF

Shingles

LUMBER,
PINE.

reet,
nton Street,
Crossing.

D, N. Y.

ations.
and 1325 D.



the wish of a majority of the owners of the Great Island group, in 1873, some pretending to believe it unsafe. Its destruction was entirely unnecessary, and took away a charming feature of Niagara, which it is hoped may soon be replaced. Table rock, which fell in 1850, was directly opposite the Canadian Shore.

You soon reach the Three Sisters Islands, which were connected with Goat Island by handsome suspension bridges in 1868, and which open up an entirely new scene. The grandest views of the Rapids to be found at Niagara are right before you. These islands offer, from their location, an unchangeable cool retreat in summer, with enchanting views of the scenery, the cascades under the bridges,



"Over the Falls"
a frequent occurrence.



ESTIMATES GIVEN PROMPTLY. CORRESPONDENCE SOLICITED.

THE WENBORNE-SUMNER CO.

PUBLISHERS,

ART PRINTERS,

DESIGNERS, ENGRAVERS.

MANUFACTURERS OF ADVERTISING
LITERATURE FOR ALL PURPOSES.

135-137 MAIN STREET.
TELEPHONE 641.

BUFFALO, N. Y.

formed b
may be s
varying f
" Little F
When
through
directly e
between
for peopl
After
bridge is
of the Ra



formed by the current passing over the ledges of rock, being amongst the chief attractions. From the head of the Third Sister may be seen one continuous cascade, extending as far as the eye can reach from Goat Island across to the Canadian shore, varying from ten to twenty feet in height. From this miniature Niagara rises a spray similar to that of the great Falls. The "Little Brother," a small island at the foot of the Third Sister, has not yet been bridged.

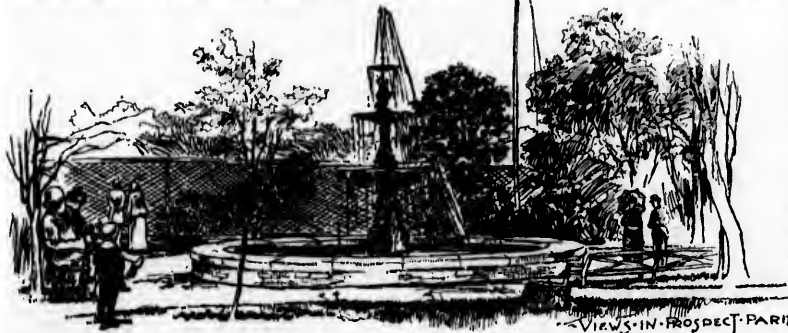
When you get back to Goat Island, you can return to the bridge by a short way or taking the road straight ahead through the woods. It is best, however, to see the other views, and to do this you turn to your right, and follow the road directly east. Here one sees how it was possible for the island to have reached a long way up stream, for a bar extends up between the currents for nearly half a mile, with a depth of water not over four feet. This also shows how it was possible for people to visit the island before the bridge was built.

After leaving the head of the island, from the road bridge is a spring of cool water, situated at the foot of of the Rapids through the trees and at their edge is fine.

you get a good view of the Rapids. Half way to the the bank. The path to it is easily accessible, and the view Next in order comes the well known Prospect Park.

Its main entrance is a tasty structure. The point of land at the edge and brink of the Falls is called Prospect Point, and commands a fine view, which is the feature of the Park that we give in illustration. The point is carefully protected by a handsome stone wall running for some distance along the edge of the gorge.

By some 300 stairs, or, better still, in a car running on an inclined railway, we



SUTOR'S ART STORE

ETCHINGS, ENGRAVINGS,
STUDIES, PHOTOGRAPHS.

Natural Wood Mouldings,
Silver, White and Gold.
Picture Frames Made to Order.

LOOKING GLASS OF ALL KINDS.

17-18 Exchange St., - BUFFALO, N. Y.

ALFRED H. SENDKER,

FINE CUSTOM MADE

SHOES



309 Michigan St.,

BUFFALO, N. Y.



BUFFALO, N. Y.

Buffalo Artificial Limb Company.

G. W. HALL, - - - Manager.

ESTABLISHED 30 YEARS.

**ARTIFICIAL LEGS,
ARMS and APPARATUS**

For Disabilities and Deformities of every Description.

U. S. GOVERNMENT MANUFACTURER.

Descriptive Catalogue Free.

Cor. Main and Eagle Sts.

ascend
means
the foot
should
steamb
NI
Bridge
ally bu
put in,
origina
ing of
towers
plished
river b

Michigan St.,

ALLO, N. Y.

Limb Company.

Manager.

30 YEARS.

LEGS,

PPARATUS

ormities of every De-
on.

MANUFACTURER.

Free.

nd Eagle Sts.



ascend to the water's edge. These cars are raised and lowered by water power, by means of a three-inch cable 300 feet long running around and over steel wheels. At the foot of the stairway you will find the landing of the steamer Maid of the Mist. You should not fail to take a trip on the boat, it will ever be remembered as the grandest steamboat ride in the world.

NEW SUSPENSION BRIDGE.—Next in order comes the New Suspension Bridge, directly below the American and Canadian (Horseshoe) Falls. It was originally built in 1868-69 with wooden truss and towers. In 1884 new towers of iron were put in, and in 1887-88 new cables, anchorages and steel truss were substituted for the original ones, making the entire structure actually new, and widened to allow the passing of carriages. The length of span is 1,268 feet between towers. Height of roadway above river, 190 feet. Height of towers 100 feet. Length of cables between anchorages 1,840 feet. The entire work of rebuilding the bridges was accomplished without interruption to travel. A particularly fine view of both the American and Horseshoe Falls, as well as the river below, is obtained from the bridge. Charges—each person to cross and return, 25 cents.



WILKES' MENAGERIE

THE FISHING AND HUNTING LINE.



The Grand Trunk R'y

Is well known as the "Tourist Route of America," and no line reaches points of such fame as the

Niagara Falls, The Thousand Islands, Rapids of St. Lawrence, Montreal, Quebec, and White Mountains.



IF



You desire a nice trip to 1000 Islands, Montreal, Quebec, the Saguenay River, White Mountains, the Sea Coast, Lake Champlain, Lake George, &c.,

Be Sure and go Via Toronto and see that your tickets read, Optional, good via GRAND TRUNK RY., or Richelieu & Ontario Nav. Co.'s Steamers.



IF



You wish a few weeks' quiet rest, with good sport, *gamey* fish, and plenty of them, try the famous Muskoka and Midland District, reached only via the GRAND TRUNK RY., and Muskoka & Georgian Bay Steamers, or a trip via the famous Georgian Bay route to Sault Ste. Marie, or via Sarnia and Steamers to Duluth, and you will be well pleased.



IF



You are going WEST to **Detroit, Saginaw, Grand Rapids, Chicago,** or the far WEST, recollect that the GRAND TRUNK is the direct route from Buffalo and Niagara Falls, and runs elegant coaches Dining, Parlor and Sleeping Cars, and passes through the thickly settled and most pleasant country.

For further information, Guides, etc., call on Agents Grand Trunk or connecting lines.

NIAGARA FALLS OFFICE, No. 1 International Hotel Block.
BUFFALO CITY OFFICE, 177 Washington St., Cor. Exchange.

WM. EDGAR,
General Passenger Agent, Montreal.

T. D. SHERIDAN,
Northern Passenger Agent, Buffalo.

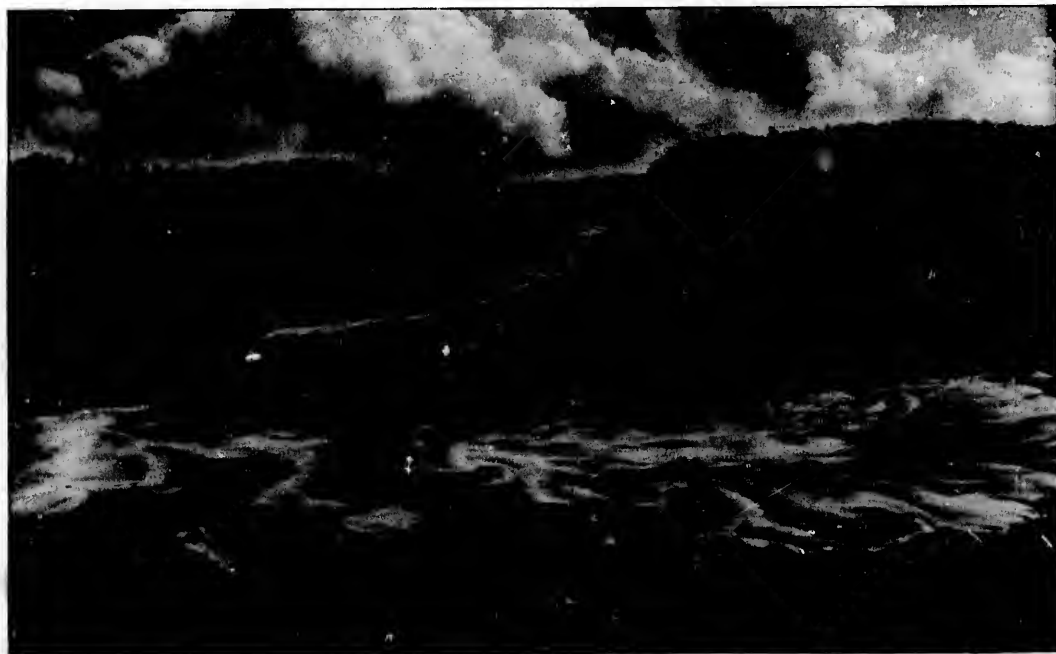
THE ONLY LINE TO MUSKOKA DISTRICT.

and no
Mountains.

T to
Grand
ago,
at the GRAND
n Buffalo and
gant coaches
g Cars, and
tled and most

ent, Buffalo.

THE ONLY LINE TO MUSKOKA DISTRICT.



THE WHIRLPOOL AS SEEN FROM THE CANADIAN SIDE.

Buttery Whirlpool Rapids + +

AND DOUBLE ELEVATORS.

• • •

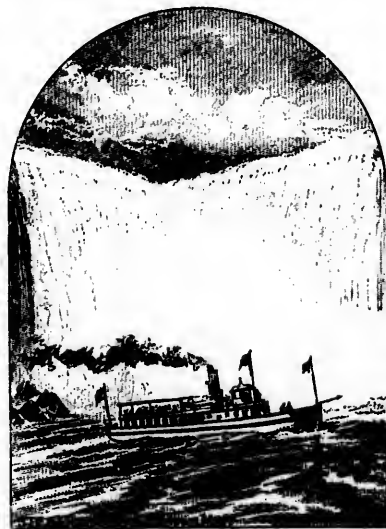
THIS most charming and delightful spot about Niagara, is situated about one hundred rods below the Railway Suspension Bridge. No visitor should leave Niagara without visiting this wonderfully grand and romantic place. You have not seen Niagara until you have been there, and at *no other* point on the American side can any except a very distant view be obtained of the Rapids—bear this in mind. There is *no* point on the American side where this wonderfully grand view can be obtained except at **Buttery's**. Here you can have your Photograph taken with the Rapids for a back ground, a *Souvenir* of your visit to Niagara of permanent value and lasting beauty. Don't forget that **Buttery's** is the *only* Rapids on the American side.

Buttery Whirlpool Rapids Company,

PROPRIETORS.

Post Office Address,
NIAGARA FALLS, N. Y

Important to Visitors and Tourists. + +

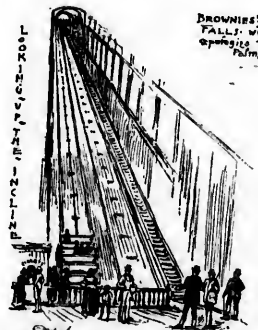


WHEN at Niagara Falls be sure and take a trip on the **MAID OF THE MIST**. The Steamer leaves foot of Incline at 10 A. M. and returns every hour. The Steamer is captained by Mr. J. M. Carter, of the American Falls, Rock of Ages, Cave of the Winds, Luna and Goat Islands, to the foot of the great Horse-shoe Falls. Tickets, which can be obtained of Excursion Agent, who sells them at reduced rate on trains, at foot of Incline, or on board the boat, entitles passengers to land in Canadian Free Park, with privilege of returning by boat any trip the same day. **Fare, 50 Cts.** including Waterproof Clothing.

R. F. CARTER, MASTER.
FRANK LE BLOND, BUSINESS MGR.



half hour, between 8.00 A. M. and 6.00 P. M., passing American Falls, Rock of Ages, Cave of the Winds, Luna and Goat Islands, to the foot of the Great Horse-shoe Falls. Tickets, which can be obtained in advance, are sold at a special rate at reduced prices to children, and on board the boat, entitled "The Maid of the Mist," a picnic lunch is served in Canadian Free Park, with privilege of returning by boat any trip the same day. **Fare, 50 Cts.** Including Waterproof Clothing. **R. F. CARTER, MASTER.** **FRANK LE BLOND, BUSINESS M'GR.**



TOP OF INCLINED RY.

Brownies at the Falls, with reference to Table Rock



TABLE ROCK.—One of the most famous points about Niagara in old times, now gone forever, was Table Rock. This was at the point on the Canada side about ten rods below the Falls, and was simply a huge ledge of rock overhanging the precipice. One should visit Canada in the afternoon, for the sun is then at your back, and its full glory is thrown on the opposite Falls, and in the afternoon alone can rainbows be seen on the Canada side.

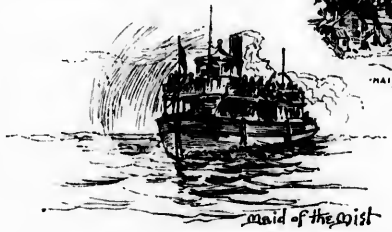
CANADIAN ISLANDS.—Following along the river bank, one crosses to Cedar Island, on which is an observatory or pagoda, and skirting along the Rapids for about a mile, with as fine scenery as Niagara can afford, you reach the beautiful Clark Hill Islands, three in number, and connected by beautiful suspension bridges, erected in 1878. The scenery here is grand, each turn bringing you to some new



MAID OF THE MIST



TOP OF INCLINED RY.



MAID OF THE MIST

NIAGARA FALLS (NEW) SUSPENSION BRIDGE



THE most complete view of both Falls and the River gorge can be obtained from this Bridge, it is the direct route to the Canadian Park, Table Rock and Horse Shoe Falls.

DAVY'S BAZAARS.

VISITORS at Niagara Falls should not fail to visit one or both of Isaac Davy's Novelty Bazaars. One of them is situated at the lower end of Falls street, directly in front of the New York State Reservation, and directly opposite the Soldiers' Monument. The other one is opposite the International Hotel on Main street. Mr. Davy has made it his aim and study to have his Bazaars excel all other places here, where

SOUVENIRS,

Curiosities and Fancy Goods are sold, and an experience in this line of business extending over twenty-seven years has given him the lead and the preference on the part of the traveling public over all others. A visit to either of his Bazaars will most amply repay anybody. Mr. Davy has also the finest livery and coach system at Niagara, and parties desiring to see the Falls can procure at either of his stores the finest turnouts to be had anywhere. All goods sold at both Bazaars are guaranteed to customers, and the prices charged are fair and reasonable. By all means visit these Bazaars before purchasing. Wholesale and retail.

feature o
current
Returnin
ledge of
more, p
Bridge,
Canada,
come to

CAN

This brid
magnitud
cantileve
of engin
by the C
falo, N. Y
tral Railr
to connec
following

Len
intermed

The
towers ar
two in n
are 24 fe
trusses fr
The

most com-
e view of
ls and the
orge can be
from this
it is the
oute to the
ian Park,
Rock and
Shoe Falls.

One of them
n, and directly
street. Mr.

seven years has
o either of his
Niagara, and
nywhere.
and reasonable.

feature or bit of nature; where the current runs 40 miles an hour. Returning down the river along the ledge of the bluff for two miles or more, passing the Suspension Bridge, which carries us over to Canada, two miles further on we come to the New Cantilever Bridge.

CANTILEVER BRIDGE.—

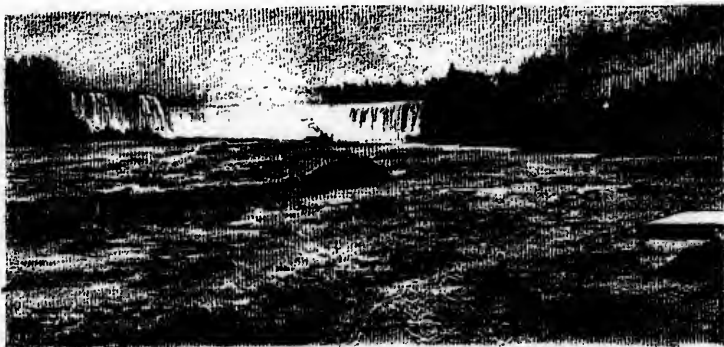
This bridge was the first one of any magnitude ever constructed on the cantilever principle. It is a marvel of engineering skill. It was built by the Central Bridge Works, Buffalo, N. Y., for the Michigan Central Railroad Co., and was designed

to connect the New York Central and Michigan Central Railroads. C. C. Schneider, the chief engineer, has furnished the following accurate details of the dimensions, etc.:

Length of bridge proper from center to center of end pins, 970 feet, divided into two cantilevers of 395 feet each, and intermediate span of 179 feet.

The towers are braced wrought iron structures, and rest on masonry piers 38 feet high. The foundations under the towers are of beton, eight feet thick, built directly on the rock, forming a uniform, solid and enduring mass. The trusses are two in number, 28 feet apart between centers; the panels are 25 feet long, excepting those of the intermediate spans, which are 24 feet, and the end panels on the shore arms of the cantilevers, which are 20 feet long. The depth of the cantilever trusses from the towers is 56 feet, and at the ends 21 feet at the shore ends, and 26 feet at the river ends.

The structure has been proportioned to carry, in addition to its own weight, a freight train on each track at the same



—HORSESHOE FALLS—

THE WHIRLPOOL RAPIDS PARK CANADA SIDE.

THE Whirlpool Rapids and Park is situated on the Canada side of Niagara River, just below the great Railway Suspension and Cantilever Bridges. The edge of the Rapids is reached by an

INCLINED RAILWAY

worked upon an exceedingly safe and simple principle. There are two cars connected by two endless steel wire cables, and are run by the weight of water. Having reached the edge of the Rapids by the means described, the visitor finds himself in the midst of a scene of wild grandeur which is almost indescribable. For nearly 400 feet the cliffs rise in a nearly perpendicular line, and at their feet the wildly rushing waters leaping into the air to a height of thirty and forty feet, and dashing itself into white foam against the rocks, forms an ever varying scene which fascinates and holds spell-bound the beholder. Your visit to Niagara is not complete without this view, and that you may carry it away with you, we can make you an instantaneous photograph of yourself with the Rapids in the background—a souvenir of your visit to Niagara that will be a "thing of beauty and a joy forever."

WHIRLPOOL RAPIDS AND PARK CO., Limited,

POST OFFICE ADDRESS:

NIAGARA FALLS, N. Y.

THE GREAT Whirlpool

AMERICAN SIDE.

*VISITORS to Niagara should not fail to
see this magnificent point of interest.*

*The wildest, grandest scenery about
Niagara, as well as the only correct
view of the Great Whirlpool. Situated
on the De Veaux College grounds, a
short distance below the Railway Sus-
pension Bridge.*

time,
The n
and h
pins.
T
T
on m
C
the O
stream
distin
is own
L
above



pool

E.

not fail to

of interest.

nery about

only correct

l. Situated

grounds, a

railway Sus-

time, weighing one ton per lineal foot, with each train headed by 76-ton consolidation engines. The material comprising the superstructure is openhearth steel and wrought iron. The towers and heavy compression members, such as lower cards and center posts, are of steel, as are all pins.

The whole of the super-structure is pin-connected, and these are made of steel.

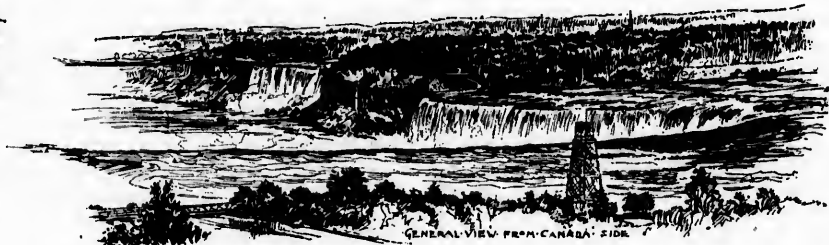
The near approach to the main structure on both sides are substantial iron trestles resting on masonry foundations erected upon solid rock. 300 feet further on, we come to the

OLD SUSPENSION BRIDGE.—The Railroad Suspension Bridge, more commonly called the Old Bridge, is 800 feet long, and spans, 230 feet above its waters, one of the most turbulent streams on the globe, whose current just below flows at the rate of 30 miles an hour. It has two distinct roadways—the one above for trains, the one below for carriages and foot passengers. It is owned by two stock companies, and cost \$500,000. The following are the dimensions:

Length of span, 822 feet; height of tower above rock, American side, 38 feet; height of tower above rock, Canada side, 78 feet; height of tower above floor of railway, 60 feet. Number of wire



View from
Dartmouth Springs



GENERAL VIEW FROM CANADA SIDE

SWAN STREET CAFE

ENLARGED AND ALL NEW THROUGHOUT.

The Most Complete Shell Oyster House
IN THE CITY.

MEALS TO ORDER AT ALL HOURS
AT REASONABLE RATES.

FAMILY PARLORS UP-STAIRS
WITH ALL CONVENIENCES.

GEO. B. MILLER, Proprietor.

11 East Swan St., Buffalo, N. Y.

THE LIVINGSTON,

An Absolutely Fire-Proof Hotel.

AMERICAN PLAN.

Rates, \$2.00 to \$2.50 Per Day.

Rooms, \$1.00 Per Day, Upward.

HARMON & PIERCE Prop's.

ROCHESTER, N. Y.

ON,

AN.

Upward.

rop's.

R, N. Y.



The Rams' Nest
Clark Hill Island

cables, four: diameter of each of No. 9 wires in each cable, strength of cables, 12,400



cable, 10 1/2 inches; number 3,659; ultimate aggregate tons.

It is regarded as a great triumph of engineering skill. Nine thousand miles of wire are employed in the four cables. The first string was carried across the chasm by means of a kite, and then heavier ropes were dragged across till the cables themselves thus performed the passage. Charges:—Each person over and back, 25 cents.

Still further on we reach the **Whirlpool Rapids Park**.

"What solemn awe, and what emotions deep,
Of grandeur and sublimity, arise
Within my wondering soul at sight of thee."

In the reach of the river below the Old Suspension Bridge, is what is generally known as the Whirlpool Rapids Park (Canada side). It comprises the natural uplands of the river bank, which at this point are 250 feet high, as well as a road at the base of



Grand
Theon Falls



Lower
Side
near
Burns
Point



HARDWICKE & WARE MFG. CO., + +

— BUFFALO, N. Y. —

Manufacturers and Dealers in

ENGINEERS' AND PLUMBERS' SUPPLIES

— OF EVERY DESCRIPTION. —

Bath Tubs, Water Closets, Pumps, Sinks, Etc.

OIL, GAS AND SALT WELL SUPPLIES.

WROUGHT IRON PIPE,

. . . CASING AND FITTINGS.

Engines, Boilers and Steam Pumps,

VENTILATING FANS, MOTORS, ETC.

STEAM and WATER HEATING, . .

. . . NATURAL GAS SUPPLIES.

OFFICE AND WAREHOUSES,

451, 453, 455 AND 457 WASHINGTON STREET.

+
LIES
Pumps,
ETC.
...
PLIES.
C.



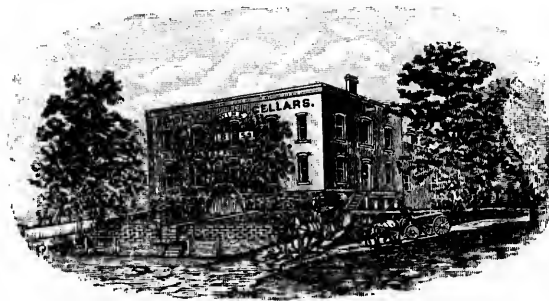
WINTER SCENERY AT NIAGARA — ICE BRIDGE IN FRONT OF AMERICAN FALLS.

TRADE MARK

REGISTERED.

BROCTON WINES.

ESTABLISHED 1859.



THE ONLY ORIGINAL CELLARS.

G. E. RYCKMAN, Proprietor.

BROCTON, Chautauqua Co., N. Y.

Orders promptly filled at the Cellars or at Buffalo Office,
Music Hall Building, Main St., cor. of Edward.

COCHRANE'S HOTEL AND RESTAURANT.

IN CONNECTION WITH UNION DEPOT,

BENJ. COCHRANE, Prop. **BROCTON, N. Y.**

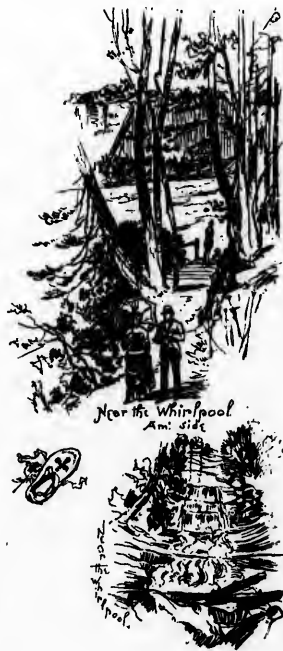
I AM NOW PREPARED to furnish first-class accommodation to the traveling public at reasonable rates. . . . Parties changing cars for Chautauqua will find this a very convenient place for procuring a first class meal, as my tables are supplied with all the delicacies of the season. Good lunch counter attached, with Grapes, Fruits, etc., in season; also G. E. Ryckman's Celebrated Brocton Wines on draught or bottle; orders taken for case or gallon lots will receive prompt attention. . . . All excursion trains stop at this station.

LIVERY ATTACHED.

AND
URANT.

or,
N, N. Y.

ish first-
traveling
hatauqua
ient place
eal, as my
the delica-
ch counter
s, etc., in
an's Cele-
draught or
e or gallon
tion.
his station.



Near the Whirlpool
Am. side



Path to the Whirlpool



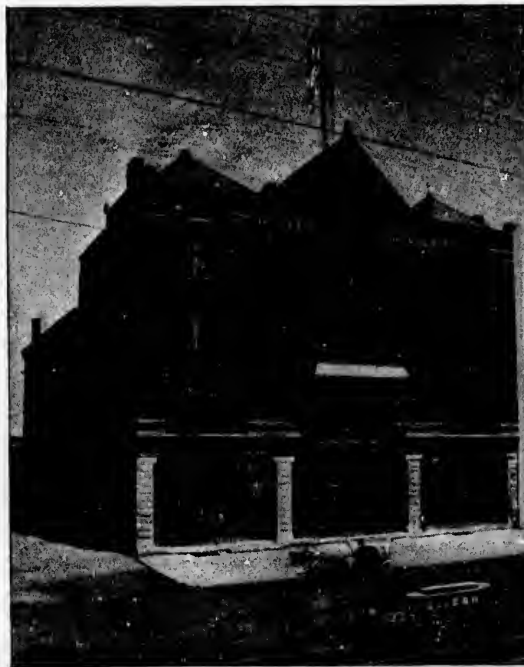
a cliff, which follows the course of the river, and has been excavated from the rock. In the warm days of summer this is a most delightfully cool and shady retreat, the cliff forming a natural protection from the rays of the sun, while the immediate presence of the swift-rolling waters insures a perennial coolness. Two means of access to the water's edge are provided, the first being a series of steps forming a long flight of stairs, and the other a unique inclined railway operating two cars, running by the specific gravity of water in the tanks under each car, filled from a spring at the top of the cliff, and emptied on the arrival of the cars at the foot of the incline. The ascent or descent is made in one and one-half minutes, the loaded car from above being the motive power used to hoist the lighter car from below. The visit to this park, including railroad, costs 50 cents. Nowhere else can so perfect an idea of the enormous power of the river be obtained. Rushing through the narrow defiles, the water here meets with such restriction as to make it leap in some places to a height of twenty feet, the rolling surges of the stream being exactly similar to those of the ocean in a storm.

It is also well to add here a brief mention of the excellent photographic arrangements of this Park. Persons or parties can here be photographed with the Rapids in the background, the picture making one of the most interesting and noteworthy obtainable.

HOTEL PORTER,
Niagara Falls, N. Y.,
under the manage-
ment of Mr. Robert B.
Murphy, Proprietor, late of
the Hotel Edison, Schenec-
tady, N. Y., will open its
doors to the public for the
first time, June 1st, 1891,
and continue open the year
round.

The Hotel Porter has been
built for the express purpose
of filling a long-felt want
at Niagara. "A first-class
hotel at reasonable rates."

The Hotel Porter is mod-
ern throughout in its ap-
pointments, and the charac-
ter of its conveniences, it
is lighted by gas and elec-
tricity, and has electric call
bells, and is heated by steam
and open grate fires, has



HOTEL PORTER, Niagara Falls, N. Y., Robt. B. Murphy, Prop'r.

spacious parlors, fine office,
superb dining room, etc.,
not excelled at Niagara.

The Hotel Porter is a sub-
stantial stone and brick
structure, situated on Falls
St., within two minutes walk
of depots, and within three
minutes walk from the Falls.
No effort will be omitted
to render every department
deserving of the patronage
of the traveling public. The
office staff will be found to
possess urbanity and uni-
form courtesy.

The cuisine will be in
charge of a competent stew-
ard, expert chefs, and as-
sistants, and the dining
room will have the service
of civil and obliging waiters.
Rates, \$2.00 and \$2.50 per
day.

Ro
piece ov

While
edge, n
can be
visible

BE
Queens
low the
shaft,
memor
who fe
monum
was 126
stroyed
of the r
replaced
in 1853.
the base
30 feet
the card
rest on
pedesta
high, on
lions' he
The sha

, fine office,
room, etc.,
Niagara.

ter is a sub-
and brick
ed on Falls
minutes walk
within three
om the Falls.
be omitted
department
e patronage
public. The
be found to
ty and uni-

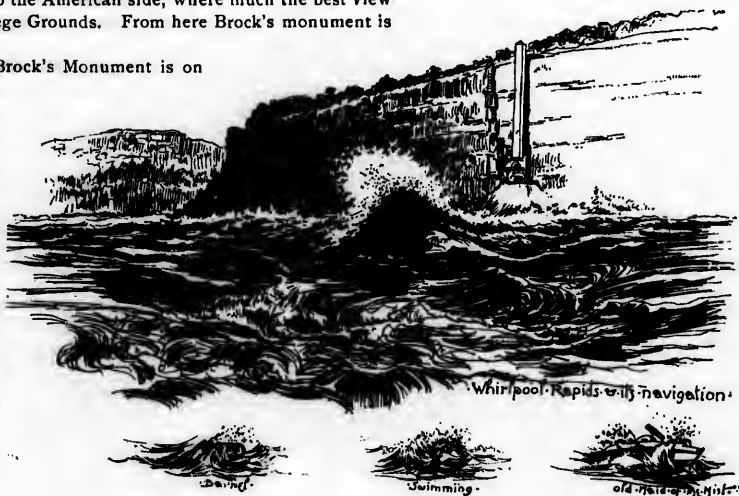
will be in
mpetent stew-
hefs, and as-
the dining
ve the service
iging waiters.
and \$2.50 per

Returning to the top of the bank we proceed a few rods further down the river, and find ourselves standing on the precipice overlooking the boiling Maelstrom, the

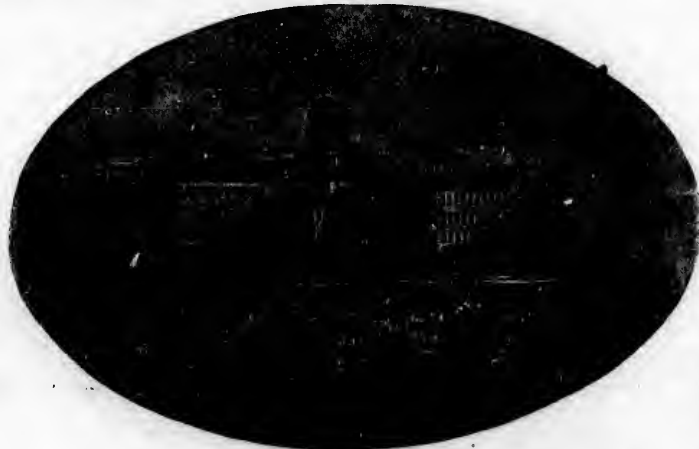
WHIRLPOOL, CANADA SIDE.

While directly away from us winds the Niagara till it is lost in Lake Ontario beyond. If you desire to descend to the water's edge, retrace your steps and cross to the American side, where much the best view can be had from the De Veaux College Grounds. From here Brock's monument is visible on a clear day.

BROCK'S MONUMENT.—Brock's Monument is on Queenston Heights, six miles below the Falls. It is a handsome shaft, erected to perpetuate the memory of General Isaac Brock, who fell here in 1813. The first monument was built in 1826, and was 126 feet high. This was destroyed by explosion on the night of the 17th of April, 1840, and was replaced by the present structure in 1853. It is 185 feet in height, the base being 40 feet square and 30 feet high. Four lions facing the cardinal points of the compass rest on this as well as on the pedestal, 16 feet square by 10 feet high, ornamented in *alto-relievo* by lions' heads, alternated by wreaths. The shaft is of freestone, 75 feet



----- THE -----
CATARACT HOUSE ON THE AMERICAN SIDE,
NIAGARA FALLS, N.Y.



BEST HOTEL AT
NIAGARA.

ADJOINING STATE
RESERVATION, AND
DIRECTLY OPPO-
SITE GOAT ISLAND.

J. E. DEVEREUX, Manager.

Alfred Kozlowski



DE,
N.Y.

NING STATE
ATION, AND
TLY OPPO-
AT ISLAND.

ager.



5

high by 30 ft. in circumference, having a Corinthian capital 10 feet in height, carrying in relief a statue of the Goddess of War. Over this is a round dome seven feet in height, surmounted by Brock's statue, and can be reached by 250 spiral steps, starting from the interior of the base.

WHIRLPOOL RAPIDS, AMERICAN SIDE.—The effect of changing the point of view is nowhere better illustrated than in the case of the Rapids above named. Seen from the Canada side they have all the advantages of cool, shady walks and uplands as it relates to the position of the sun in the warmest portions of the day. But as seen from the American side they have a peculiar charm in the fierce glint of the sunlight illuminating the crests of the flood, and in the emerald and opal translucence of the waters as they pass in their swift career.

When it is remembered that about 100,000,000 tons of water pass over the Falls every hour, and that this quantity is compelled to pass between steep cliffs to a point about two miles distant from the Falls, where the course of the river turns abruptly at an angle of 45 degrees, it will be understood, even by those who have never witnessed the scene, that such a terrific force must cause a fearful commotion in its rocky bed.



Temperance House

NIAGARA FALLS, N. Y.

Opposite N. Y. C. R. R. Depot, SECOND STREET.

TERMS:

\$1.50 and \$2.00

PER DAY.

H. HUBBS, - Proprietor.

SALT'S NEW HOTEL.



149 and 151 Second St.,
NIAGARA FALLS, N. Y.,

Adjoining the New York Central Depot in the rear and about
200 feet from the Erie Depot. Rates, \$2.00 per day. Building
and equipment entirely new. Electric Bells and Steam Heat.

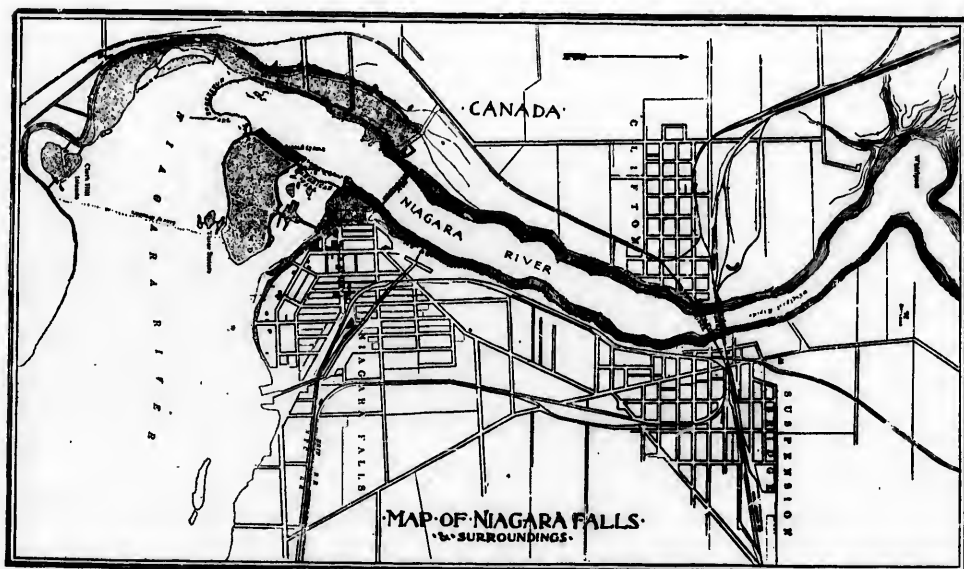
JOHN SALT, Sr., Proprietor.

Late of the Western Hotel.

EL.



7.,
r and about
. Building
Steam Heat.
prietor.
el.



THE CHADWICK TWO-WHEELER.

EASIEST RIDING and most convenient Vehicle ever produced. Absolutely free from horse motion. Shafts have no more weight on back of horse than those of an ordinary buggy, as the body hangs entirely separate from the shafts. Hangs very low, lightest draft, and is a vehicle that can be driven more miles over the roughest roads, with less fatigue to horse and driver than any other two or four-wheeler ever produced. Is finely finished, stylish and very desirable for ladies, physicians, aged people and invalids.

LADIES' PARK PHÆTON,
PHYSICIANS' FAVORITE,
COMBINATION SULKY AND ROAD

CARTS.



LADIES' PARK PHÆTON.
(AS IT APPEARS HITCHED).

THE CHADWICK TWO-WHEELER CO., Exclusive Builders and Patentees.

Main Office and Factory located at OLEAN, Cattaraugus Co., N. Y., until August 1st, 1891, after which date will be located at SALEM, Roanoke Co., Va. Send for Illustrated Catalogue.



WINTER SCENERY AT NIAGARA — ICE MOUNTAIN IN FRONT OF AMERICAN FALLS.

Patentees.

be

TOURISTS' IDEAL ROUTE.

Rome, Watertown & Ogdensburg R. R.

GREAT HIGHWAY AND FAVORITE ROUTE FOR FASHIONABLE PLEASURE TRAVEL.
THE ONLY ALL-RAIL ROUTE to the THOUSAND ISLANDS.

NEW HEAVY ENGINES. ALL STEEL TRACKS. 1891 NEWLY BALLASTED. FAST TRAINS. AVOIDING STOPS.

Wagner Palace Sleeping Cars will be attached to all Night Trains, and Drawing Room Cars will be run on Day Trains between
 Niagara Falls and Clayton, Niagara Falls and White Mountaine, and Portland, Maine,
 Rochester and Clayton, Albany and Clayton, New York and Clayton,
 Syracuse and Clayton, Utica and Clayton, New York and Paul Smith's.

ROME, WATERTOWN & OGDENSBURG RAILROAD.

The only American Line making an all-rail connection with the *Kichellen & Ontario Navigation Co.'s Royal Mail Line Steamers for Montreal, Quebec, and the River Saguenay.*

The *St. Lawrence Steamboat Express* (Tourists' Favorite Train), with new Wagner Sleeping Cars *Niagara Falls to Clayton* without change. Positively the only line from Niagara Falls avoiding all delays and transfers, and affording passengers a full night's rest. Commencing Sunday, June 7th, 1891, will leave *Niagara Falls 8.30 P. M. daily*, and run a solid train direct to the steamboat dock at Clayton; arriving at Clayton 5.55 A. M., and making immediate connection with the R. & O. Nav. Co.'s Steamer. Leaving Clayton at 6.45 A. M., arriving at Montreal at 6.30 P. M., passing through all of the Thousand Islands and Rapids of the River St. Lawrence by daylight, connecting at Montreal with the R. & O. Nav. Co.'s Steamers for Quebec and River Saguenay.

The short line, and in every way the best line from Niagara Falls to the White Mountains and New England Sea-shore Resorts. Commencing Sunday, June 7th, 1891, will run the famous **NIAGARA FALLS, WHITE MOUNTAINS and PORTLAND EXPRESS.** Leaving Niagara Falls 8.40 P. M., with Wagner Palace Car Co.'s new Buffet Sleeping Cars through without any change or delay from Niagara Falls to Portland, Maine. This train runs via Oswego, Norwood, Swanton and Fabyans to Portland, Maine, passing through the heart of the White Mountains and through the far-famed White Mountain Notch, landing passengers in the immediate vicinity of the White Mountain Hotels, without transfer, and making direct connections at Portland for Bar Harbor, Old Orchard Beach, Kennebunk and New England Sea-shore Resorts. Ask about this train before you decide upon your route from the West to the White Mountains and the Sea-shore.

THE FAMOUS "NIAGARA FALLS AND THOUSAND ISLANDS LIMITED." A Solid Vestibuled Train will leave Niagara Falls week days, commencing June 8th, 1891, at 8.55 A. M.; arrives Clayton 5.30 P. M. This train has Superb Vestibuled Cafe, Smoking Cars, Vestibuled Coaches and New Vestibuled Wagner Palace Drawing Room Cars.

ROUTES AND RATES FOR SUMMER TOURS. A beautiful book of 224 pages, profusely illustrated, contains maps, cost of tours, list of hotels, and describes over 600 Combination Summer Tours via Thousand Islands and Rapids of the St. Lawrence River, Saguenay River, Gulf of St. Lawrence, Lake Champlain, Lake George, Kennebec, Boston, New York, and all Mountain, Lake, River and Sea-shore Resorts in Canada, New York and New England. Send ten cents postage to General Passenger Agent, Oswego, N. Y., for a copy before deciding upon your route. It is the best book given away.

W. H. DENNY, General Manager.

THEO. BUTTERFIELD, Gen'l Passenger Agent, OSWEGO, N. Y.

CH



horizon.
 with Erie
 almost to
 On the sh
 sounding
 "A c
 House op
 imposing
 Scattered
 lover of s
 kept law
 are repres
 grounds a

CHAUTAUQUA AND CHAUTAUQUA LAKE.



CHANGES have taken place since the French explorers, missionaries and traders made their way laboriously from the Mississippi, through lakes Ontario, Erie and Chautauqua. Now the traveler steps upon a train at Niagara Falls and is whisked along the riverside to Buffalo, then to the shore of Lake Erie, in full view of that inland sea, past Silver Creek—the home of Kitty of Mr. Howells' "Chance Acquaintance"—and Dunkirk, to Brocton in the vineland of Western New York. Here the train turns away from the lake and begins to climb the range of hills which forms the water-shed between the St. Lawrence and the Mississippi. During this ascent of twenty minutes the tourist enjoys enchanting views of vineyard-clad hillsides, broad fields dotted with farm houses and villages, and the azure plain of Erie's waters with the Canadian shore dimly visible on the

horizon. A few minutes run from the summit brings the train to the very shore of a charming lake, small in comparison with Erie yonder, ten miles away and seven hundred feet below, yet a good twenty miles long, in some places narrowed almost to the width of a small river but elsewhere spreading into broad bays with good stretches for sailing or steaming. On the shores of this twenty mile strip of water are various settlements which collectively offer all the pleasures (save the sounding of the sea,) which lure people from home.

"A city upon a hill" is Mayville, the pretty village at the head of Chautauqua waters. By the lakeside the Chautauqua House opens hospitable doors. The high promontory, two miles below on the north shore, is Point Chautauqua, and the imposing structure which crowns it is the Grand Hotel. Across the lake is a grove-covered point, of which more anon. Scattered at intervals along the shores are quiet colonies: Maple-Springs, Whiteside's, Long Point, Bemus Point, where the lover of solitude may find a safe retreat. Near the foot of Chautauqua lies Lakewood, a beautiful "society resort," with well-kept lawns, handsome private cottages, and magnificent modern hotels, of which the Kent House and the Sterlingworth Inn are representative types. The character of the place and the tone of the society are quite in harmony with the beauty of the grounds and the good taste of the management. Vis-a-vis with Lakewood, a new summer place has sprung up, Greenhurst,

GRAND CENTRAL HOTEL

SMETHPORT, PA.

NEWLY REFITTED AND
REFURNISHED.

CENTRALY LOCATED,
Opposite COURT HOUSE,
HEATED BY STEAM.

F. N. TAYLOR, Prop'r.

KINNEY HOUSE, + +

CUBA, N. Y.

Closets on first and second floors. Hot and
Cold Water Bath Rooms. Best equipped Livery
in Western New York in connection with House.
Rates \$2 per day.

ARTHUR KINNEY, Prop'r.

STOP AT THE

ST. ELMO,

ELDRED, PA.

THE BEST HOUSE FOR COMMERCIAL TRAVELERS.
HEATED AND LIGHTED BY GAS.
FIRST-CLASS LIVERY ADJOINING.

NEAREST UNION DEPOT.

W. P. REILLY, Prop'r.

HEADQUARTERS FOR COMMERCIAL MEN



HURLBERT HOUSE

G. HURLBERT,
MANAGING PARTNER



HURLBERT & Co., Props.

BATH ROOMS - STEAM HEAT
ALL MODERN CONVENIENCES

DUNKIRK N.Y.

O,

TRAVELERS.

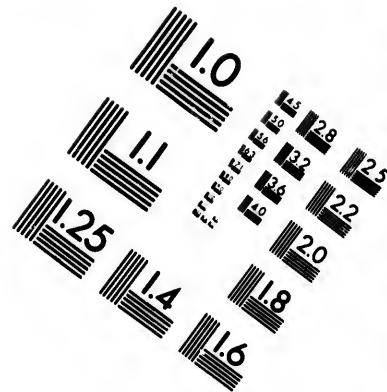
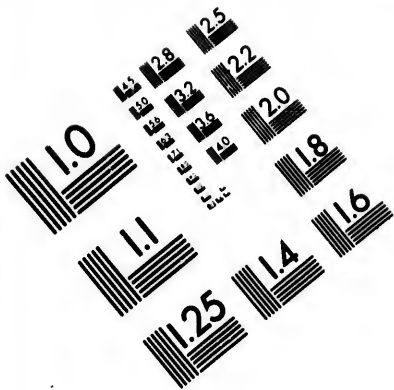
ING.
ON DEPOT.
r.

~~SECRET~~
ERT
SE

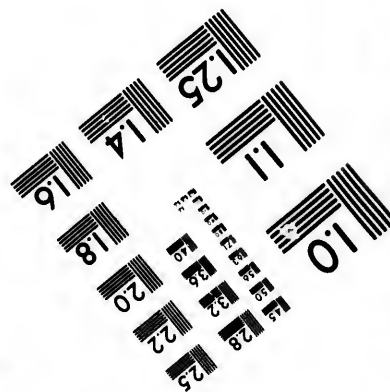
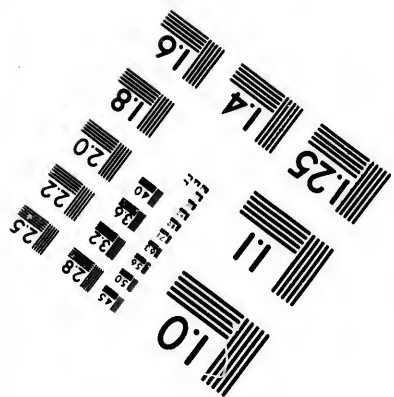
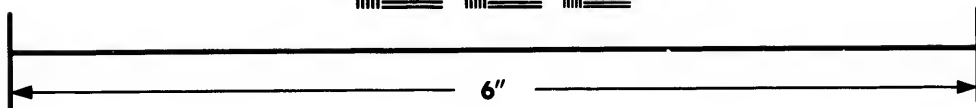
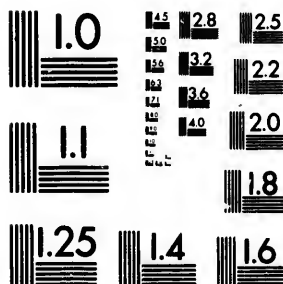
, Paris.

ARK N.Y.





**IMAGE EVALUATION
TEST TARGET (MT-3)**



**Photographic
Sciences
Corporation**

23 WEST MAIN STREET
WEBSTER, N.Y. 14580
(716) 872-4503

**CIHM/ICMH
Microfiche
Series.**

**CIHM/ICMH
Collection de
microfiches.**



Canadian Institute for Historical Microreproductions / Institut canadien de microreproductions historiques

© 1983

with a per
steaming th
tourist to th
panorama o
and other
Chautauqu

There

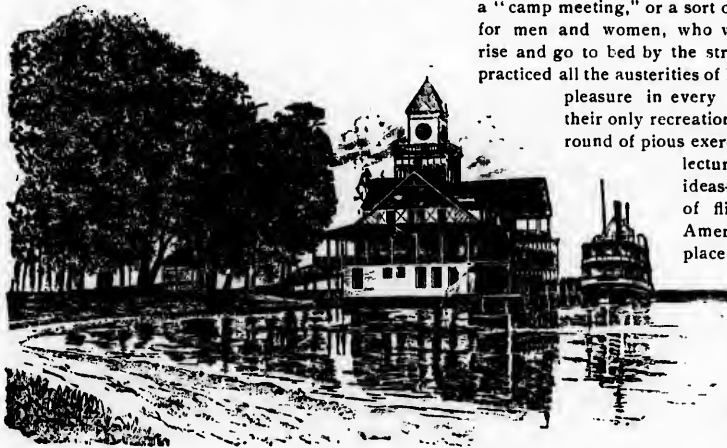


with a perfectly appointed hotel, where one may dine *al fresco* in true continental fashion. A half hour's steaming through the narrows or outlet, which calls to mind some portions of Florida rivers, brings the tourist to the pier of Jamestown, one of the most flourishing cities of Western New York. So ends the panorama of this Chautauqua Lake. But the power which has made Chautauqua a household word in this and other lands emanates from the summer city three miles from the head of the lake. It is named Chautauqua.

There used to be many odd notions afloat about this summer city. Time was when people fancied it a "camp meeting," or a sort of boarding school for men and women, who were compelled to rise and go to bed by the stroke of a bell, who practiced all the austerities of life, frowned upon pleasure in every form, and gained their only recreation from an endless round of pious exercises and profound lectures. Happily these ideas—the result chiefly

of flippant press correspondence and the American fondness for a joke—have given place to a better understanding of what Chautauqua is and aims to be. The name of Chautauqua has become associated with a system of education which has done much to aid the ambitious in self-imposed tasks.

The principle now so generally accepted, that education is the privilege of all, young and old,



THE PIER.



OLEAN ❖ HOUSE | STOP ^AT

OLEAN, N. Y.

Newly Refitted and -
Refurnished. -

CENTRALLY LOCATED.

HEATED BY STEAM.

H. S. SARTWELL, Prop'r.

: THE RIDDELL,

BRADFORD, PA.

Opposite W. N. Y. & P. R. R. Depot.

Rate, \$2.00 per Day.

F. P. HOLLEY, Proprietor.

rich and
should be
it is wit
Cha
Y.) is ea
swift st
There is
Chautau
dred a
Cincin
thirty m



rich and poor, that mental development is only begun in school and college, and should be continued through all of life, underlies this Chautauqua system. But it is with the summer community life that we have now to do.

Chautauqua—(Post-office, *Chautauqua*, N. Y., Express Office, *Chautauqua*, N. Y.) is easily accessible from Mayville, Jamestown and all points on the lake by swift steamers plying frequently between the various points on both shores. There is also a direct approach by rail from Mayville at the head of the lake. Chautauqua is four hundred and sixty-six miles from New York City; four hundred and twenty-five miles from Cincinnati, O., five hundred and thirty miles from Chicago, Ill., two



PALESTINE PARK.



COLLEGE OF LIBERAL ARTS.

northern shore of the lake, contains not less than five hundred artistic and attractive cottages, a well-equipped hotel, and many other buildings which are used for exercises, lectures, and recitations. A large model of Palestine, three hundred feet long, and the miniature representation of modern Jerusalem, both recently renovated, are among the peculiar attractions of this academic town.

The streets are well laid out and carefully sprinkled in dry weather, the water supply is pure and abundant, the sanitation excellent, and the climate generally



KELLOGG MEMORIAL.

hundred miles from Pittsburgh, Pa., sixty-five miles from Buffalo, N. Y., and sixteen miles from Jamestown, N. Y.

The Chautauqua enclosure, consisting of 160 acres of well-wooded, naturally level land, at a beautiful point on the

ELL,

A.

R. Depot.

ietor.

HOTEL ❖ CHAUTAUQUA,

MAYVILLE, N. Y.

The popular Summer Resort on the Western New York & Pennsylvania R. R., and the Chautauqua Lake R'y, situated at the head of Lake Chautauqua, commanding the finest view of America's most charming Lake, within 15 minutes drive of Chautauqua Assembly Grounds, with hourly connections by boat and rail. This Hotel is first-class in every department, and has ample accommodations—Billiard Room, Ball Room, Barber Shop, etc., Croquet and Tennis Lawn, Childrens' Play Grounds, Spacious Verandas, etc.

A first-class Livery, and also a boat livery is connected with the Hotel, with complete supply of fishing tackle for sale or rent.

All who visit this place concede at once that it is the most desirable resort on the Lake; it is the midst for the finest fishing grounds for bass, pickerel, muskalonge, etc.

Our aim will be, perfection in every department.
For terms apply,

R. L. BARTON & SON, Prop'r's.

MAYVILLE, N. Y.

❖ The Two Gems of the Thousand Islands. ❖

HOTEL WESTMINSTER, Located in the Beautiful Westminster Park, on Wells Island.

Located at Central Park, near Alexandria Bay. CENTRAL PARK HOTEL

Rates Two to Three Dollars per Day.

In addition to Hotel Westminster, which I have conducted for the past five years, I have secured a 4-year lease of the new Central Park Hotel, and it will be my aim to make these finely-situated hostleries the most homelike and desirable family resorts in the Thousand Islands.

CENTRAL PARK HOTEL, finished last year, is of beautiful and convenient construction, nicely furnished, has modern improvements, and accommodates 250 guests.

HOTEL WESTMINSTER is well-known as one of the pleasantest and most attractive hotels upon the St. Lawrence. It has accommodations for 300 guests, and every room affords a fine river view.

The tables will be supplied with all the delicacies, served in a first-class manner.

A fine orchestra in attendance three evenings each week at each hotel. Fine opportunities afforded for fishing, boating and bathing. Persons having hay fever will here find entire relief. These hotels remain open from June 15 to October 1.

H. F. INGLEHART, PROPRIETOR.

Post Office Address of each Hotel,
ALEXANDRIA BAY, N. Y.

Telegraph Office in each Hotel.

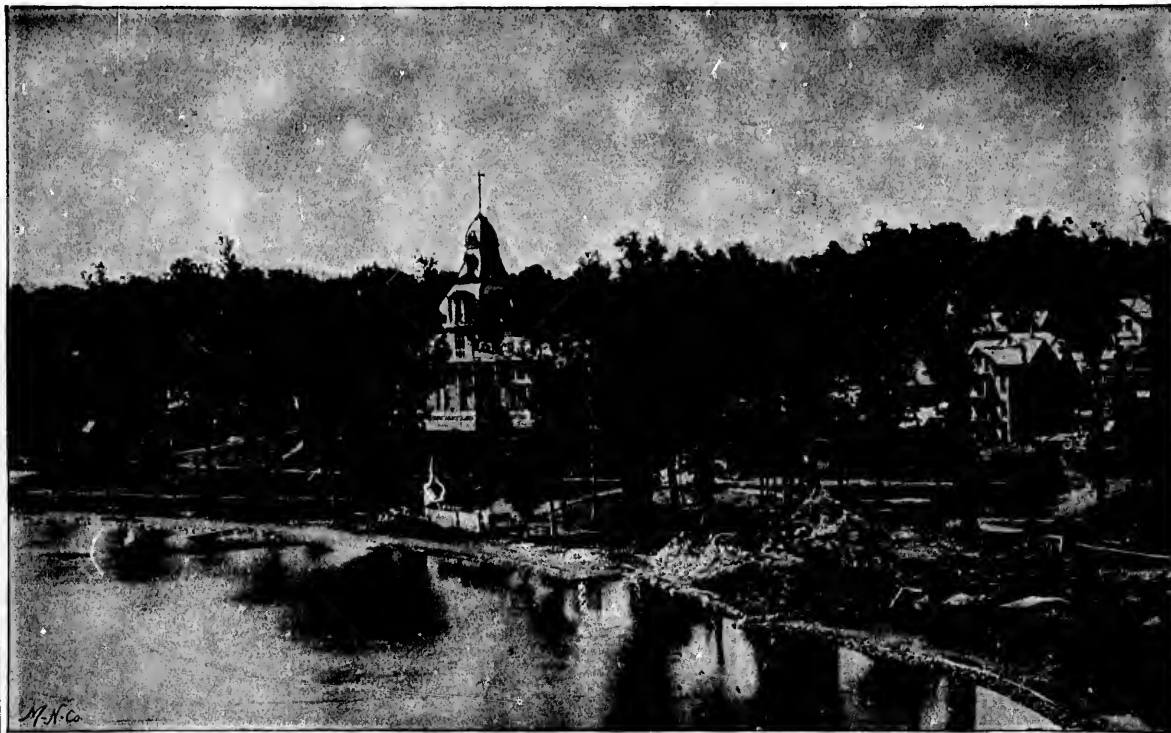
the Beautiful
er Park, on
Island.

HOTEL

d for the past
Park Hotel,
ries the most
is.
nd convenient
nd accommo-
test and most
ations for 300
ed in a first-
at each hotel.
ing. Persons
remain open

OR.

in each Hotel.



THE SOUTH SHORE AT CHAUTAUQUA — PALESTINE PARK AT THE RIGHT.

Western New York and Pennsylvania R. R.

IS THE

SHORT AND POPULAR ROUTE

Between Buffalo, Olean, Bradford, Dunkirk, Mayville, (Chautauqua Lake), Corry, Titusville, Oil City, Pittsburg, Philadelphia, Baltimore, Washington and the South. Only line running solid trains between Buffalo and Pittsburg.

- - - PULLMAN PALACE CARS ON ALL THROUGH TRAINS. - - -

Train No. 2 Leaves Buffalo 8.40 A. M., daily; has through baggage cars, coaches and Pullman Buffet Drawing Room Car via Dunkirk, Mayville, (Chautauqua Lake), Corry, Titusville, Oil City and Franklin; arrives at Pittsburg 6.30 P. M.

Train No. 4 Same route, leaves Buffalo 9.00 P. M. daily, has Pullman Sleeper; arrives at Pittsburg, 7.10 A. M.

Trains Nos. 1 and 3 Leaves Pittsburg daily 8.15 A. M., 8.45 P. M.; are solid trains with Pullman cars; arriving at Buffalo 7.20 A. M., 6.40 P. M.

BUFFALO CITY TICKET OFFICE, 84 EXCHANGE ST., Telephone 205.
S. B. NEWTON, City Ticket Agent.

R. BELL,
General Superintendent,

J. A. FELLOWS,
General Passenger and Ticket Agent.

BUFFALO, N. Y.

cool and
midst of
by flarin
all have
For
of the U
Univers
Normal
class-roo
is studie
himself,
H. P. P
wood, th
the voca
practice
Bes
classes
Painting
Shortha
Photogr
But
public f
water, a
tauqua
citizens
ments, f
in all de
States C

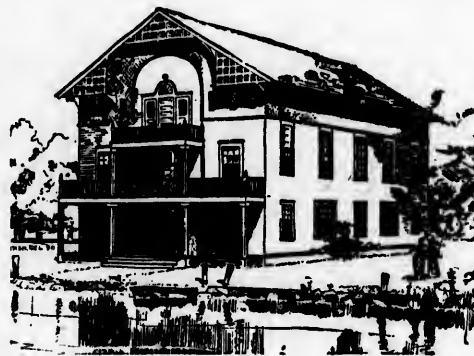
R.

cool and invigorating. At night the grounds are brilliantly illuminated by the electric light, and St. Paul's grove, in the midst of which stands the white "Hall in the Grove," the center of the Chautauqua Literary and Scientific Circle, is lighted by flaring *Athenian watch-fires*. The Congregationalists, Presbyterians, Methodist-Episcopalians and United Presbyterians all have handsome and commodious club-houses, and other denominations have similar buildings in prospect.

For the summer of 1891 Chautauqua offers educational opportunities and means of intellectual quickening to the people of the United States. Under Dr. W. R. Harper, of Yale, the linguist, is a complete college with professors from the leading Universities of the land. Here are classes in language, literature and science. Col. Francis W. Parker, of the Cook County Normal School, Chicago, Ill., conducts a School of Methods for secular teachers. Under his inspiration, daily tasks in the class-room are no longer mere drudgery, but become the keenest pleasure. In the schools of Sacred Scripture the great book is studied carefully and critically under such well-known teachers as Prof. William Henry Green, of Princeton, Dr. Harper himself, and others. A Music School under the charge of Dr. H. P. Palmer of New York, assisted by men like W. H. Sherwood, the pianist, I. V. Flagler, the organist, and J. H. Wheeler, the vocal teacher, offers complete courses in the theory and practice of music.

Besides these regularly constituted departments, there are classes in Elocution and Oratory, the Delsarte system, China Painting, Wood Carving, Industrial Drawing, Letter Writing, Shorthand and Typewriting, Penmanship and Book-keeping, Photography and the like.

But Chautauqua gives more than all these. In other cities public functions are limited to the care of streets, the supply of water, and the material welfare of the community. But Chautauqua goes a step farther. The tax which is levied upon the citizens is expended in providing lectures, concerts, entertainments, free to all alike. Hither come men and women prominent in all departments of life. William T. Harris, LL. D., United States Commissioner of Education, has always been in sympathy



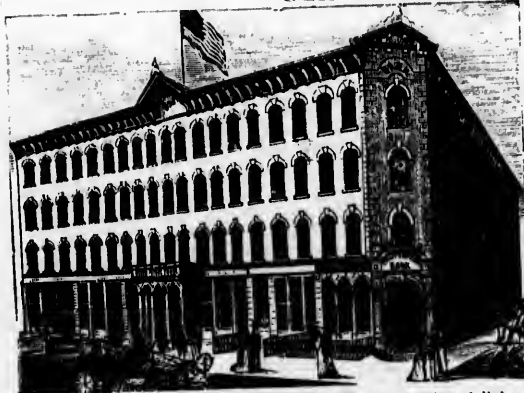
NEW GYMNASIUM AND BOAT HOUSE.

usville,

Drawing
Franklin;

to A. M.
man cars;

THE ARLINGTON, + +
OIL CITY, PA.

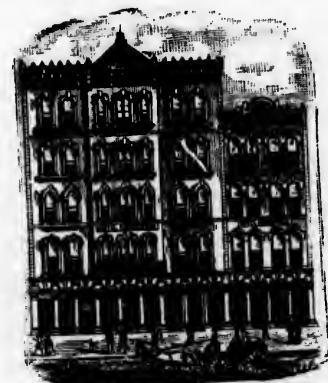


THE ARLINGTON has all modern conveniences, electric bells and lights, barber shop, Russian, Turkish and plain baths, and large commercial sample rooms on first floor. The hotel has been refitted and put in first-class order, and will be conducted in the best possible manner. The table will be supplied with the best the market affords. It is centrally located for business and has accommodations for 150 guests.

J. W. THOMPSON, Manager.

TERMS \$2.00 AND \$2.50 PER DAY.

HOTEL BRUNSWICK,



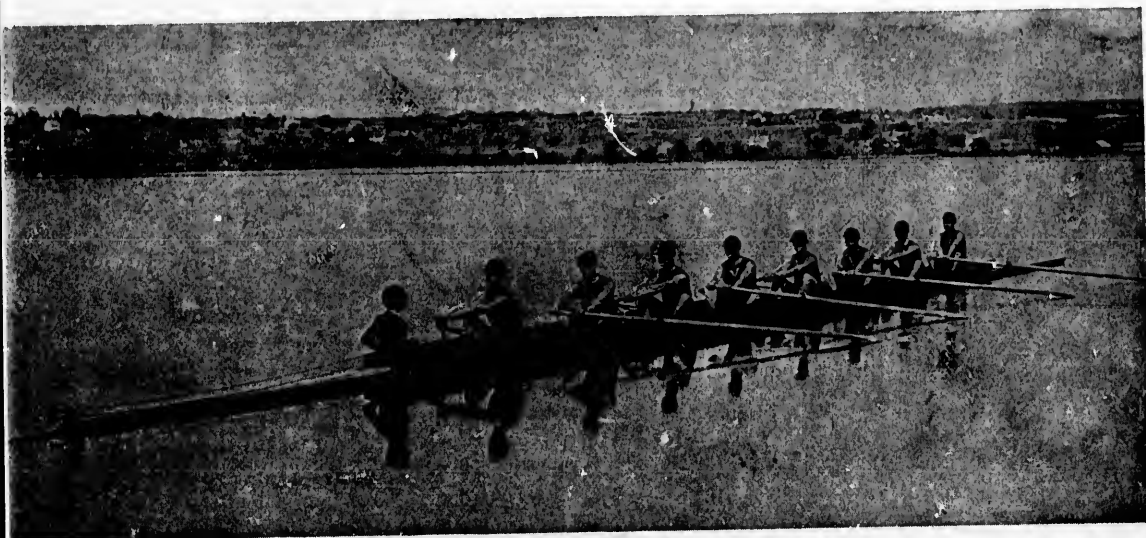
TITUSVILLE, PA.

CHAS. J. ANDREWS. . . . PROPRIETOR.

Rates, \$2.00 Per Day.

Most popular and best equipped house in Northwestern Pennsylvania.

ICK,



AN EIGHT-OARED CREW.

PROPRIETOR.

Northwestern



Take a ❖

❖~~~~~Kodak~~~~~❖

with

❖ you.

*" You press the button, . . .
 . . . we do the rest."*

OR YOU CAN DO IT YOURSELF.

Send for Catalogue.

The Eastman Company, Rochester, N. Y.

with Cha
Assembly
next July
Harvard
has been
August.
Society,"
Col. Fran
the princ
his delig
of Mr.
known th
the Asse
Willard,
engagem
of Chica
2, and g
the subj
Secretar
them ma
of Evolu
has arou
makes s
tions, up
give thro
marked
much to

U.

with Chautauqua, and some years ago gave a course of lectures before the Assembly. He has accepted an invitation to be present again for a few days next July, when he will make three or four addresses. Prof. John Fisk, of Harvard University, one of the most prominent historical writers of America, has been secured for four lectures to be delivered during the first week of August. Dr. Edward McGlynn, the famous advocate of the "Anti-Poverty Society," will present, on August 8, his scheme for the abolition of poverty. Col. Francis W. Parker, of Chicago, the prominent educator who has accepted the principalship of the Chautauqua Teachers' Retreat, will give two or three of his delightful lectures in connection with the general programme. The name of Mr. Henry Watterson, the brilliant Kentucky editor and orator, is well known throughout the country. He will be warmly welcomed when he addresses the Assembly audience August 18, on some national theme. Miss Francis E. Willard, a firm friend to Chautauqua, has happily found time from her many engagements for an address Saturday, August 1st. Dr. John Henry Barrows, of Chicago, the well-known Presbyterian pastor, will preach on Sunday, August 2, and give a short course the week following. The United States Navy will be the subject of two lectures by Mr. Henry W. Raymond, Private Secretary to Secretary Tracy, of the Navy Department. These lectures will be profusely illustrated with stereopticon views (many of them made expressly for Chautauqua), which will show the contrast between vessels of the old type and the new "Squadron of Evolution." "How the Other Half Lives" is the title of a book (published by Charles Scribner's Sons, New York) which has aroused great interest and provoked active discussion. This volume describes tenement life in New York City, and makes startling statements concerning it. Mr. Jacob A. Riis, the author, will give two lectures, with stereopticon illustrations, upon this increasingly important question. Mrs. Julia Ward Howe, of Boston, the cultivated author and lecturer, will give three lectures in August upon timely subjects. Mrs. Zerelda Wallace, mother of Gen. Lew Wallace, and a speaker of marked ability, will make an address July 22, on "Political Equality." Miss Grace Dodge, of New York, who has done so much to promote the interests of "Working Girls' Clubs," will spend a few days at Chautauqua and speak before the

Y.



A FAIR BATHER, TAKEN WITH A KODAK.

THE SARATOGA,

MRS. S. STRUNK, Proprietor.

FIRST CLASS PRIVATE BOARDING.

OPEN THE YEAR ROUND.
RATES: \$10 TO \$12 PER WEEK.

LAKEWOOD, N. Y.
Chautauqua Co.

UNION DEPOT DINING AND LUNCH ROOM, OIL CITY, PA.

All trains on the W. N. Y. & P. R. R., A. V. R. R., Erie R. R., and Lake Shore R. R. stop here for meals. First class meals 50 cents. Lunch counter service unexcelled. Quick service, no delays.

CHARLES ATKINS, Proprietor.

POINT WHITESIDE, Chautauqua Lake.

THE house at this beautiful Point stands near the shores, commanding a lovely view up and down the lake from its broad, shady verandas. Large grounds filled with fine old trees surround it, and come down to the water's edge, affording shady walks up and down the shore. Tennis and croquet grounds, rowboats, and a little steam yacht afford its guests opportunity for all kinds of out-door amusements. The house itself has large airy sleeping rooms; pleasant parlors and dining room, with open fires so enjoyable on cool evenings. No pains are spared to make the table exceptionally good; and it is always supplied with fresh milk, cream and vegetables in abundance. The Railroad station is Whiteside, on the Chautauqua Lake Railway, and the Steamboat Landing bears the same name. Both are within a short distance of the house, making it easily accessible by railway or steamers, and convenient to all places of interest about the lake. For further particulars and terms, address

W. P. WHITESIDE,
Chautauqua, N. Y.

MAPLE SPRINGS,

SMITH T. FRANCIS, Proprietor.

MAPLE SPRINGS, N. Y.
CHAUTAUQUA LAKE.

HOUSE LARGE AND CONVENIENT. Plenty of Shade, Pavillic's and Row Boats. A Pleasant Place for Family Picnic Parties. PRICES ALWAYS REASONABLE. All the Necessary Improvements for a Comfortable Home. Boarders Solicited. Railroad Station and Steamboat Dock in front of Hotel.

Telephone Connections from all
Points on the Lake.

P. O. ADDRESS,
MAPLE SPRINGS,
JAMESTOWN, N. Y.

ke.

commanding
verandas,
se down to
re. Tennis
d its guests
parlors and
to pains are
plied with
e Railway,
thin a short
or steamers.

qua, N. Y.

GS,

Y.

e, Pavillic s
ies. Prices
for a Com-
Steamboat

GS,
N, N. Y.



ALONG THE SHORE AT CHAUTAUQUA NEAR THE NEW GYMNASIUM.

S. W. BEAUJEAN,

240 Terrace Avenue,

P. O. BOX 240.

. . BOARD AND LODGING . .

Chautauqua, N. Y.

M. L. ECKER.

H. C. PARKHURST.

"THE BELVEDERE,"

93 SIMPSON AVE.,

WITH FINE LAKE VIEW.

FIRST-CLASS, AND RATES REASONABLE.

CHAUTAUQUA, N. Y.

The Cook Cottage,

83 Simpson Ave.,

CHAUTAUQUA, N. Y.

Centrally Located, With a Delightful Full Lake View.

MRS. JENNIE C. COOK, Proprietor.

OHIO COTTAGE,

Mrs. M. E. & E. A. Crossgrove,


270 MORRIS AVE.,

P. O. Box 275.

CENTRALLY LOCATED.

RATES REASONABLE.

CHAUTAUQUA, N. Y.



racine shell
captain of t
games. Fi
The ba
watchful ba
base ball g



THE C. L. S. C. BUILDING.

racing shells. There are eight or ten tennis courts under the charge of the athletic department. Mr. A. A. Stagg, formerly captain of the Yale nine, and famous as an invincible "pitcher," coaches the Chautauqua team, and plays in numerous match games. Field sports, under the charge of a competent college athlete, are also features of this phase of Chautauqua life.

The bathing-beach is a peculiarly safe one, as it slopes very gradually without ledges or holes, into deep water. A watchful bathing master is in constant attendance, to guard against the transgression of the bathing limits. There will be base ball games and tennis tournaments and regattas. Nothing which promotes bodily exercise of a healthful kind will be

"Woman's Club." The public concerts will be of the highest grade. Among those who will take part are: Rogers' Band and orchestra, the grand chorus under Dr. H. R. Palmer, Mlle Marie Decca, *prima donna* from the Royal Italian Opera, London; Mr. William H. Sherwood, pianist; Mr. J. V. Flagler, organist; Miss Waltzinger, of New York, soprano; Miss Annie Park, cornetist; Mr. Charles Kellogg, bird-warbler, the Schumann Quartette of New York, and still others not yet definitely engaged.

There is still another side to Chautauqua—the recreative and athletic. In 1890 the finest summer gymnasium in the country was completed and equipped. The lower floor is used as a boat-house. Here are kept light pleasure boats, eight-oared barges and

THE SHERMAN.



JAMESTOWN, N. Y.

WADE & JACKSON, Propr's.

Rates, \$2.00, \$2.50 and \$3.00.

THE LUCAS COTTAGE.

282 Morris Avenue,

CHAUTAUQUA, N. Y.

CENTRALLY LOCATED.

F. D. LUCAS, - - - Proprietor.

A. D. WESCOTT.

M. B. WESCOTT.

ALBION,

103 Terrace Ave.,

CHAUTAUQUA, N. Y.

ONE OF THE LARGEST,
BEST LOCATED AND MOST POPULAR
HOUSES ON THE GROUNDS.

NEAR THE PIER, POST OFFICE AND
AMPHITHEATRE, AND FIVE MINUTES
WALK FROM THE COLLEGE.



the "Am
pleases fr
to dine en
only that

In cl
place; th
Chautauq
readers w
effort; wh
and art; w
life," that
sight of t
develop h
its best w

AGE,

D.

roprietor

ESCOTT.

A, N. Y.

OFFICE AND
FIVE MINUTES
COLLEGE.



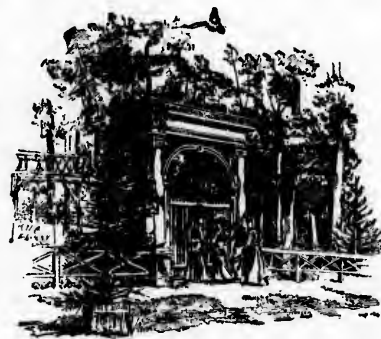
HALL IN THE GROVE.

the "American plan." The visitor pays so much a day, takes what he pleases from the bill of fare, and leaves the rest alone. If a man prefers to dine entirely upon desert that is his own affair, and Chautauqua hopes only that it may agree with him.

In closing, it should be remembered that Chautauqua is not only a place; that its influence extends over this and other lands; that in the Chautauqua Literary and Scientific Circle there are thousands of earnest readers who are seeking the true happiness which comes from intellectual effort; who are reading diligently and systematically in literature, history and art; who are encouraged with the thought that "education ends only with life," that it is never too late to accomplish something, and that he loses sight of the great object of life who does not by persistent effort try to develop himself to the utmost of his ability. Chautauqua is perhaps doing its best work in the homes of the American people.

neglected. Chautauqua is sometimes represented as a Puritan-like colony, whence "jest and youthful jollity" are banished, and where sport of every kind is frowned upon. Now, while it is true that certain amusements are for many reasons tabooed, yet, on the other hand, every facility is offered for the enjoyment of what is unquestionably wholesome and healthful.

Nor, again, is this summer city given up wholly to the pursuit of literature, science and art. If one is so inclined he may spend a summer at Chautauqua without any more intellectual wear and tear than is involved in listening to bright, humorous lectures, entertaining readings and good music, in watching fire-works and illuminated fleets, and in taking athletic exercise. Most people prefer to combine profit with pleasure, but Chautauqua is run upon



THE GOLDEN GATE.



POINT CHAUTAUQUA.

WHERE SHALL WE GO THIS SUMMER?

The resort offering the most healthful and attractive recreation is where you want to sojourn during the summer months.

POINT CHAUTAUQUA is now one of the most delightful of inland lake resorts. Its fame is established and no detailed introduction is necessary. It vies with the largest coast resorts in popularity and, in points of natural endowment, claims rightful precedence.

WHERE IT IS.—Point Chautauqua is high and grandly situated at the head of Lake Chautauqua. The lake nearly surrounds it, thus forming a point, hence its name. It lies opposite Chautauqua and is within rowing distance of Mayville, the proper head of this magnificent lake. From the very water's edge the green sward, dotted with trees, rises in undulating grandeur until it climaxes on the eminence occupied by the Grand Hotel.

NATURAL ATTRACTIONS.—Point Chautauqua has been lavishly endowed by Dame Nature with a wealth of attraction to lure the invalid, the weary and overworked to come and be restored. To the north the romantic scenery rises until a point seven miles away is reached when—"presto!" the scene changes and Lake Erie bursts into full view. Turning you see Lake Chautauqua—you are between the two.

GRAND HOTEL.

WHERE LOCATED.—On a commanding height overlooking the head of Lake Chautauqua, almost directly across from Chautauqua Assembly Grounds, and at the apex of a sweeping view for miles down the lake, stands the Grand Hotel of Point Chautauqua, with its metropolitan appointments and advantages.

CAPACITY.—The Grand Hotel will accommodate four hundred guests. The rooms are large with high ceilings, and well furnished. The table is a feature of the Grand, its appointments and service are unexcelled on Lake Chautauqua. The house is supplied with pure spring water. The halls and verandas are large and spacious, and supplied on every story with hydrants, hose and fire escapes for reducing the danger of fire, and rendering accidents from that source almost impossible. It is complete, with the modern improvements of elevator, gas, electric bells, telegraph, bath rooms, barber shop, news stand, post office, etc.

"MINE HOST."—The pioneer host of Lake Chautauqua is Mr. Horace Fox, Manager of the Grand Hotel. Mr. Fox personally sees to the comfort and entertainment of the guests of the "Grand." In former years Mr. Fox was proprietor of the Chautauqua House, Mayville, New York, and the Beckel House, Dayton, Ohio. This introduction is sufficient guarantee that the guests will be "made at home."

FOR TERMS.—For further information and terms address Horace Fox, Grand Hotel, Point Chautauqua, N.Y.

where you
resorts. Its
es with the
nent, claims

the head of
nt, hence its
layville, the
green sward,
he eminence

endowed by
eary and the
ry rises until
es and Lake
are between

ua Assembly
appointments

he table is a
The halls and
ing accidents
barber shop.

he comfort and
nd the Beckel



A BOATING PARTY AT HEAD OF THE LAKE NEAR POINT CHAUTAUQUA.



BALL ROOM, STERLINGWORTH INN.



STERLINGWORTH INN AND COTTAGES.

THE ELITE SOCIETY AND HEALTH RESORT.

Incandescent Electric Lights, Safety Elevator, Continuous verandas, Recherche Orchestra, Evening Hops, Morning Concerts, Turkish and Russian Baths.

OPEN JUNE TO OCTOBER. Special September Rates.

Address E. L. FRISBEE, Proprietor.

LAKEWOOD, N. Y.

STERLINGWORTH INN, LAKEWOOD, N. Y.

VAN BUREN POINT A SUMMER PARADISE.

Van Buren Point is a summer retreat whose past popularity and brilliant prospects are due to a combination of rare advantages in topography, location, sanitary features and natural scenery. Occupying a bold headland that juts far out into the clear waters of Lake Erie, 45 miles from Buffalo, five miles from Dunkirk, and an hour's ride from Chautauqua, with a mile of variegated lake beach along the water front and a back ground of Chautauqua hills, its manifold attractions have gained wider recognition year by year, and each succeeding summer the cottagers, the campers, and the transient visitors, like the migratory birds of passage, are certain to return, bringing with them many additions.

The fine grounds, endowed by nature with a wealth of beauty, have been laid out as a splendid park over 100 acres in extent, with smooth graveled drives, wide plank walks, winding woodland paths, shady groves and cool sylvan retreats, with broad stretches of sunny green sward for lawn games and athletic sports. The floral features are unequalled at any other summer abiding place, while hammocks, swings, rustic seats, and everything else which serves to make out-of-door life comfortable, are supplied with a generous hand.

The illustration on the opposite page will enable those who have not yet enjoyed the delights of a visit to Van Buren Point, to form some slight idea of its many attractions, but there is much more to this beautiful place than this picture even hints at. On the North it is a rock bound promontory, high and precipitous, jutting well out into the lake, crowned with noble oaks and grand old elms. At intervals the shore slopes with gradual descent to the water's edge, while on either side of the point the white graveled beach stretches back from bold wave sculptured rocks of the headland, the water deepening so gradual that children can sport in the waves, and wade out with perfect security. Ample accommodations are provided for bathing and boating, and the fishing is excellent.

The great army of Chautauqua visitors who take advantage of the liberal railroad excursion rates to make annual pilgrimages to the great shrine of literature, art, and religious worship, can enjoy the added pleasure of a visit to Van Buren Point, without any material increase of expense.

Surrounded by a landscape of great beauty and variety, near the extremity of the headland, is found the hotel with its cluster of cottages scattered here and there in shady nooks and quiet retreats for the use of families who prefer the privacy of individual homes. From the verandas can be enjoyed a sweeping and unobstructed view of the lake, harbor, beach, and surrounding country, a prospect which never fails to please and entertain those who delight to study the fair but ever changing face of nature.

Every possible provision is made to satisfy the material wants of the patrons of the point, and no one ever has occasion to carry away other than pleasant memories of a spot upon which Nature has lavished her treasures so freely.

All Railroads running into Buffalo make close connections with the W. N. Y. & P. R. R., which stops all trains running East and West of Van Buren Point. Parties from the West by the L. S. & M. S. R. R., can change to W. N. Y. & P. R. R., trains at Brocton, bus makes connections with all trains.

The manifest sanitary advantages of Van Buren Point have won for the place the highest endorsement of the medical profession. A number of the leading Buffalo physicians not only commend it to their patients, but likewise bring their own families here, and spend with them as many hours each day as pressing professional duties will permit.

For further information as to rates and accommodations, call upon or address

The hotel address after June 1st will be
VAN BUREN POINT HOTEL, FREDONIA, N. Y.

J. LANSING MOORE, Proprietor.
No. 33 WEST EAGLE STREET, BUFFALO, N. Y.

topography,
from Buffalo,
of Chautau-
the transient

both graveled
lawn games
anything else

some slight
promontory,
descent to the
road, the water
bathing and

the great shrine

ages scattered
in he enjoyed
in those who

ay other than

West of Van
ions with all

A number of
ny hours each

O, N. Y.



APPROACH TO VAN BUREN POINT.

THE ARLINGTON.

WM. MULLEN, - PROPRIETOR



Cor. Exchange and Wells Sts., Opposite N. Y. C. & L. S. Depot,

BUFFALO, N. Y.

Rates \$2.00 per Day.

Steam Heat and Electric Lights Throughout.

N.

ughout.

I

Fin

No.

Pu

No.

BUFFALO RUBBER COMPANY,

G. D. BARR, Proprietor.

INDIA RUBBER GOODS

OF EVERY DESCRIPTION.

Fine Water-Proof Clothing for Men and Women a Specialty. We carry a line of Tennis Goods from Slazenger and Sons, London, Eng., consisting of Racquets, Balls, Shoes, Etc.

No. 363 Main Street,

BUFFALO, N. Y.

• G. D. BARR, •

Pure Oak Tanned Leather Belting

RUBBER BELTING, HOSE, PACKING AND MILL SUPPLIES,

No. 90 Pearl Street,

BUFFALO, N. Y.

Agency for the **BOSTON BELTING COMPANY.**

THE
MILLER & BRUNDAGE COACH CO. LIMITED.

Secure your Tickets
OF THE
Agent on the Train.

Coach, Omnibus and Baggage
Express Company,

And Save Time,
your Money, and all
Annoyance.

❖ **NIAGARA FALLS** ❖

Gentlemanly and Reliable Agents are to be found on all Trains and at Railroad Stations, who will furnish you with rates, and give you full and reliable information as to the time necessary to be used, and the cost of COACH, COUPE, BROUGHAM, CABRIOLET or STAGE to visit each and

ALL POINTS AT NIAGARA FALLS AND VICINITY,

Including that portion of Ontario from Chippewa to Lake Ontario.

If you are going to Ride while at Niagara Falls, don't Fail to Secure our Services. **THE RATES**
for all classes of work are fixed at prices within the reach of all. **ONE PRICE,** Careful and Courteous Attention, Reliable Information, Safe Transportation, and Prompt Delivery will always be furnished. Baggage delivered to and from all Hotels and Private Residences.

Free Telephone Service between all Hotels and Depots and General Office.

The Company have the endorsement and receive the patronage of all the Railroads and leading Hotels at Niagara Falls.
The drivers employed by this Company are paid stated salaries, and no commissions are allowed to be collected from our patrons and paid over to drivers.

Inattention or Carelessness and complaints against any employee should be made to the Proprietors at our General Office.

37
B D 1.13.

TED.

ne,
id all

nish you
necessary

THE
RATES
Transpor-

d over to

