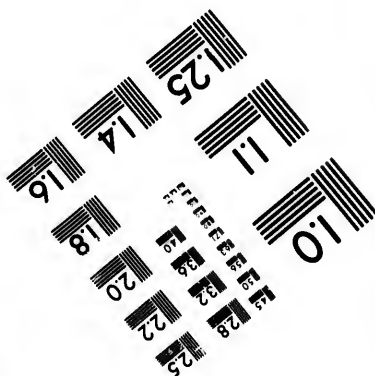
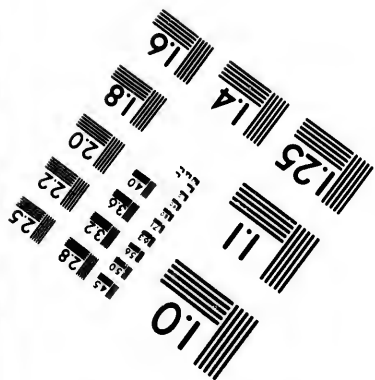
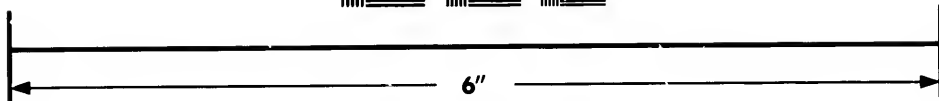
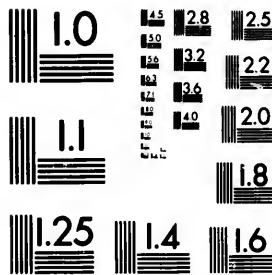


**IMAGE EVALUATION  
TEST TARGET (MT-3)**



**Photographic  
Sciences  
Corporation**

23 WEST MAIN STREET  
WEBSTER, N.Y. 14580  
(716) 872-4503

14 15 16 18 20 22 25

**CIHM/ICMH  
Microfiche  
Series.**

**CIHM/ICMH  
Collection de  
microfiches.**



Canadian Institute for Historical Microreproductions / Institut canadien de microreproductions historiques

10 11 12 13 14 15 16 17 18 19 20 21 22 23 24 25

**© 1982**

Technical and Bibliographic Notes/Notes techniques et bibliographiques

The Institute has attempted to obtain the best original copy available for filming. Features of this copy which may be bibliographically unique, which may alter any of the images in the reproduction, or which may significantly change the usual method of filming, are checked below.

L'Institut a microfilmé le meilleur exemplaire qu'il lui a été possible de se procurer. Les détails de cet exemplaire qui sont peut-être uniques du point de vue bibliographique, qui peuvent modifier une image reproduite, ou qui peuvent exiger une modification dans la méthode normale de filmage sont indiqués ci-dessous.

- Coloured covers/  
Couverture de couleur
- Covers damaged/  
Couverture endommagée
- Covers restored and/or laminated/  
Couverture restaurée et/ou pelliculée
- Cover title missing/  
Le titre de couverture manque
- Coloured maps/  
Cartes géographiques en couleur
- Coloured ink (i.e. other than blue or black)/  
Encre de couleur (i.e. autre que bleue ou noire)
- Coloured plates and/or illustrations/  
Planches et/ou illustrations en couleur
- Bound with other material/  
Relié avec d'autres documents
- Tight binding may cause shadows or distortion  
along interior margin/  
La reliure serrée peut causer de l'ombre ou de la  
distortion le long de la marge intérieure
- Blank leaves added during restoration may  
appear within the text. Whenever possible, these  
have been omitted from filming/  
Il se peut que certaines pages blanches ajoutées  
lors d'une restauration apparaissent dans le texte,  
mais, lorsque cela était possible, ces pages n'ont  
pas été filmées.
- Additional comments:/  
Commentaires supplémentaires:

- Coloured pages/  
Pages de couleur
- Pages damaged/  
Pages endommagées
- Pages restored and/or laminated/  
Pages restaurées et/ou pelliculées
- Pages discoloured, stained or foxed/  
Pages décolorées, tachetées ou piquées
- Pages detached/  
Pages détachées
- Showthrough/  
Transparence
- Quality of print varies/  
Qualité inégale de l'impression
- Includes supplementary material/  
Comprend du matériel supplémentaire
- Only edition available/  
Seule édition disponible
- Pages wholly or partially obscured by errata  
slips, tissues, etc., have been refilmed to  
ensure the best possible image/  
Les pages totalement ou partiellement  
obscurcies par un feuillet d'errata, une pelure,  
etc., ont été filmées à nouveau de façon à  
obtenir la meilleure image possible.

This item is filmed at the reduction ratio checked below/  
Ce document est filmé au taux de réduction indiqué ci-dessous.

10X	14X	18X	22X	26X	30X
<input type="checkbox"/>	<input type="checkbox"/>	<input type="checkbox"/>	<input checked="" type="checkbox"/>	<input type="checkbox"/>	<input type="checkbox"/>
12X	16X	20X	24X	28X	32X

The copy filmed here has been reproduced thanks to the generosity of:

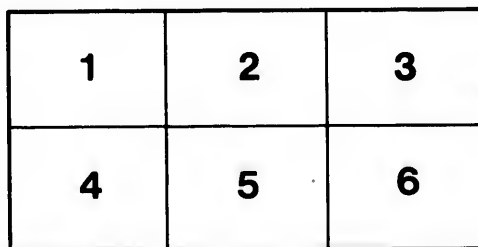
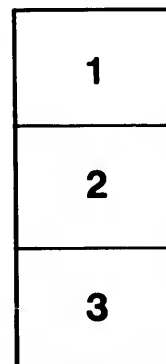
Library of the Public  
Archives of Canada

The images appearing here are the best quality possible considering the condition and legibility of the original copy and in keeping with the filming contract specifications.

Original copies in printed paper covers are filmed beginning with the front cover and ending on the last page with a printed or illustrated impression, or the back cover when appropriate. All other original copies are filmed beginning on the first page with a printed or illustrated impression, and ending on the last page with a printed or illustrated impression.

The last recorded frame on each microfiche shall contain the symbol  $\rightarrow$  (meaning "CONTINUED"), or the symbol  $\nabla$  (meaning "END"), whichever applies.

Maps, plates, charts, etc., may be filmed at different reduction ratios. Those too large to be entirely included in one exposure are filmed beginning in the upper left hand corner, left to right and top to bottom, as many frames as required. The following diagrams illustrate the method:



L'exemplaire filmé fut reproduit grâce à la générosité de:

La bibliothèque des Archives  
publiques du Canada

Les images suivantes ont été reproduites avec le plus grand soin, compte tenu de la condition et de la netteté de l'exemplaire filmé, et en conformité avec les conditions du contrat de filmage.

Les exemplaires originaux dont la couverture en papier est imprimée sont filmés en commençant par le premier plat et en terminant soit par la dernière page qui comporte une empreinte d'impression ou d'illustration, soit par le second plat, selon le cas. Tous les autres exemplaires originaux sont filmés en commençant par la première page qui comporte une empreinte d'impression ou d'illustration et en terminant par la dernière page qui comporte une telle empreinte.

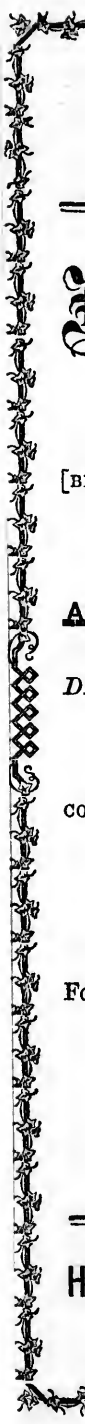
Un des symboles suivants apparaîtra sur la dernière image de chaque microfiche, selon le cas: le symbole  $\rightarrow$  signifie "A SUIVRE", le symbole  $\nabla$  signifie "FIN".

Les cartes, planches, tableaux, etc., peuvent être filmés à des taux de réduction différents. Lorsque le document est trop grand pour être reproduit en un seul cliché, il est filmé à partir de l'angle supérieur gauche, de gauche à droite, et de haut en bas, en prenant le nombre d'images nécessaire. Les diagrammes suivants illustrent la méthode.

re  
détails  
es du  
modifier  
er une  
filmage

es

errata  
d to  
t  
e pelure,  
on à



—

**Case**

[BR

**A**

*DI*

CO

FO

—

**H**

**JOHN W. COLLIER,  
PAINTER AND GLAZIER,  
No. 6, Victoria St., St. John's, N. F.**

*See Advertisement, pages 25-78.*

THE  
**Newfoundland Almanac,**

FOR THE YEAR OF OUR LORD

**1877,**

[BEING THE LATTER PART OF THE FORTIETH AND THE BEGIN-  
NING OF THE FORTY-FIRST YEAR OF THE REIGN OF  
HER MAJESTY, QUEEN VICTORIA,]

CONTAINING

**Astronomical, Statistical, Commercial, Local and  
General Information,**

**DERIVED FROM THE MOST AUTHENTIC SOURCES:**

ALSO,

**A Post Office Directory for Newfoundland,**

CONTAINING AN ALPHABETICAL LIST OF THE TOWNS, VILLAGES,  
AND SETTLEMENTS IN THE COLONY, WITH THE  
POST TOWNS AND WAY OFFICES.

**PUBLISHED BY JOHN WOODS,**

For Sale at the Book-Stores of Messrs. McConnan and Fenelon,  
Water Street, and at the *Courier* Office, Duckworth St.,  
St. John's, Newfoundland.

ST. JOHN'S, NEWFOUNDLAND:

COURIER PRINT.  
1876.

**T. MCKENZIE,  
HOUSE, SHIP, SIGN & ORNAMENTAL PAINTER,  
206 WATER STREET, ST. JOHN'S, N. F.**

*See Advertisement, pages 5-16.*

# J. Lindberg & Backstrom,

PROPRIETORS OF THE

## Anglo-Bavarian Brewery,

*St. John's, Newfoundland,*

**B**EG RESPECTFULLY TO CALL THE ATTENTION OF their friends, customers and the public, to their extensive Manufacturing of



# Bavarian BEER



*An essentially Temperance Drink!*

And now so much in demand that the Proprietors have been compelled to exclude *Porter and Ale* from their Manufactory, to give particular attention to the

## Bavarian Beer

—AND—

## Ærated Drinks, Including all kinds of Temperate Drinks.

☞ Note this! Cheap Prices!! viz.:

<b>Bavarian Beer-</b>	{ Per Dozen Quart Bottles..7/
	{ " " Pint " ..4/
	{ " Gallon .....2/
Temp. Champagne 15/ per doz.	Soda Water ..... 2/ per doz.
New'fd. Nectar .. 3/ "	Seltzer Water .... 2/ "
Ginger Ale ..... 3/ "	Potash Water ... 2/ "
Lemonade ..... 2/6 "	Kessingen Water.. 2/ "
Rose Water..... 2/6 "	Bessingen Water.. 2/ "

**OBSERVE!**—Bottles and Tierces to be returned at above prices.

**OBSERVE!**—All the above delicious Temperate Beverages are Warranted unsurpassed for Sparkling Brilliancy and Purity.

**OBSERVE!**—**BAVARIAN BEER** is the cheapest and best Beverage for old and young, and more wholesome than the best Wines, and as highly recommended by the Medical Faculty. Don't neglect to keep it in the house, as it is equally nutritious and beneficial to all the members of the family.

☞ Orders left or addressed to **J. LINDBERG, 171 Water St.,** or, **BAVARIAN BREWERY,** will be promptly attended to.

**J. LINDBERG & BACKSTROM.**

THE  
**Newfoundland Almanac,**

FOR THE YEAR OF OUR LORD

**1877,**

[BEING THE LATTER PART OF THE FORTIETH AND THE BEGINNING OF THE FORTY-FIRST YEAR OF THE REIGN OF HER MAJESTY, QUEEN VICTORIA,]

CONTAINING

**Astronomical, Statistical, Commercial, Local and General Information,**

*DERIVED FROM THE MOST AUTHENTIC SOURCES:*

ALSO,

**A Post Office Directory for Newfoundland,**

CONTAINING AN ALPHABETICAL LIST OF THE TOWNS, VILLAGES, AND SETTLEMENTS IN THE COLONY, WITH THE POST TOWNS AND WAY OFFICES.

---

**PUBLISHED BY JOHN WOODS,**

For Sale at the Book-Stores of Messrs. McConnan and Fenelon,  
Water Street, and at the *Courier* Office, Duckworth St.,  
St. John's, Newfoundland.

---

ST. JOHN'S, NEWFOUNDLAND:

COURIER PRINT.

1876.

om,  
ery,

ION OF  
xtensive



ve been  
tory, to

S,  
S.

les. .7/  
. .4/  
....2/  
per doz.  
"  
"  
"  
"

e prices.  
ges are  
rity.  
nd best  
he best  
Faculty.  
tricious

ater St.,  
to.  
OM.



RAPE

A /

420

1349114

1847

# JOHN WOODS,

PROPRIETOR OF

## PATENT SLIP,

5, Water St., St. John's, Nfld.

RATES OF DOCKAGE:

Vessels of 50 Tons Register and under - - £3 0 0

And One Shilling and Three Pence per Ton for all Vessels over that size.

The above charge is for *One Day's* use of Slip; for every day after the rates will be one-half.

No vessel with Ballast or Cargo will be taken up without previous agreement.

---

### JOHN WOODS,

General Commission Merchant,

IMPORTER OF

**S**pars, **H**ardwood **P**lank,

Timber and Lumber,

—AND—

CAPE BRETON STEAM AND HOUSEHOLD

COAL.

5, WATER STREET, ST. JOHN'S, N. F.

tw  
vis  
No  
dir  
Gr  
I  
Tim  
Lat  
I  
tud  
I  
Gre  
B  
Tim  
Lati  
E  
tude  
IV  
Gree  
from  
Th  
direc  
V.  
ble  
Be  
Time  
Lati  
E  
23°  
Ti  
Lo  
V  
crea  
No  
dere  
addi  
the  
St. J  
exar  
harl  
it w  
hou  
Sho

**Eclipses, 1877.**

In the year 1877 there will be three Eclipses of the Sun and two of the Moon, viz.:

I.—A Total Eclipse of the Moon, February 27, 1877, partly visible at Greenwich.

The first contact with the Shadow occurs at 124° from the Northernmost point of the Moon's limb towards the East.

The last contact at 68° towards the West; in each case, for *direct* image.

II.—A Partial Eclipse of the Sun, March 14, 1877, invisible at Greenwich.

Begins on the Earth generally, March 14, 13h, 15m, 0, Mean Time at Greenwich, in Longitude 74° 58' E. of Greenwich, and Latitude 34° 1' N.

Ends on the earth generally, March 14, 16h, 1m, 1, in Longitude 82° 46' E. of Greenwich, and Latitude 87° 19' N.

III.—A Partial Eclipse of the Sun, August 8, 1877, invisible at Greenwich.

Begins on the Earth generally, August 8, 16h, 11m, 9, Mean Time at Greenwich, in Longitude 37° 49' W. of Greenwich, and Latitude 72° 51' N.

Ends on the Earth generally, August 8, 18h, 48m, 2, in Longitude 179° 0' W. of Greenwich, and Latitude 35° 48' N.

IV.—A Total Eclipse of the Moon, August 23, 1877, visible at Greenwich. The first contact with the Shadow occurs at 69° from the Northernmost point of the Moon's limb towards the East.

The last contact 112° towards the West; in each case, for *direct* image.

V.—A Partial Eclipse of the Sun, September 6-7, 1877, invisible at Greenwich.

Begins on the Earth generally, Sept. 6, 23h, 10m, 0, Mean Time at Greenwich, in Longitude 75° 30' W. of Greenwich, and Latitude 23° 15' S.

Ends on the Earth generally, Sept. 7, 2h, 27m, 0, in Longitude 23° 7' E. of Greenwich, and Latitude 78° 14' S.

---

True Latitude of Church Hill.....	47° 34' North.
Longitude (West of Greenwich).....	52° 42' West.
Variation of the Compass.....	32° 30' and increasing <i>seven seconds</i> annually.

---

NOTE.—The Tide Tables (in the Calendar pages) may be rendered applicable to various other places on the coast, by simply adding or subtracting as the case may be, the difference between the times of High Water on the full and change of the Moon at St. John's, and the time of the full tide at any other harbor; for example, to find the time of High Water at any of the principal harbors of Conception Bay, add 45 minutes to the time at which it will be high water at St. John's; for Placentia Bay add 2 hours; for St. Peters, 1h, 50m.; for Ferrolle, on the French Shore, 4 hours, &c.—See table LVII of Norie's Epitome.

Calendar.

Golden Number .....	16	Dominical Letter .....	G
Epact .....	15	Roman Indiction .....	5
Solar Cycle .....	10	Julian Period .....	6590

Fixed and Movable Festivals, Anniversaries, &c.

Epiphany .....	Jan.	6	Ascension Day—Holy T. May	10
Septuagesima Sunday .....		28	Pentecost—Whit Sunday ..	20
Quinquagesima—Sh. S. Feb.	11		Birth of Q. Victoria .....	24
Ash Wednesday .....		14	Trinity Sunday .....	27
First Sunday in Lent .....		18	Corpus Christi .....	31
St. David .....	March	1	Accession of Q. Victoria June	20
St. Patrick .....		17	Proclamation .....	21
Annunciation—Lady Day ..		25	St. John Bap. —Midsum. Day	24
Palm Sunday .....		25	St. Michael .....	Sept. 29
Good Friday .....		30	Birth Prince Wales .....	Nov. 9
Easter Sunday .....	April	1	St. Andrew .....	30
Low Sunday .....		8	1st Sunday in Advent ..	Dec. 2
St. George .....		23	St. Thomas .....	21
Rogation Sunday .....	May	6	Christmas Day .....	25

The Year 5638 of the Jewish Era commences on September 8, 1877.

Ramadan (Month of Abstinence observed by the Turks) commences on September 9, 1877.

The Year 1294 of the Mohammedan Era commences on January 16, 1877.

A Table

Shewing the difference of Time at various places on the Globe, as compared with St. John's, Newfoundland.

When it is Noon at St. John's, it is

East Long.	West Longitude.	{	18 minutes past	11 o'clock, A.M., at	Charlottetown, P. E. I.
			17 do	11 do	Hambx.
			13 do	11 do	St. John, N.B.
			50 do	10 do	Portland, Me.
			47 do	10 do	Boston, Mass.
			46 do	10 do	Quebec.
			34 do	10 do	New York.
			30 do	10 do	Philadelphia.
			23 do	10 do	Washington.
			21 do	7 do	San Francisco, Califor'a.
			14 do	7 do	St. Juan, Vancouvers I.
			30 do	3	P.M. Greenwich.
			20 do	4 do	Rome.
			26 do	5 do	Constantinople.
			52 do	5 do	Jerusalem.
			50 do	8 do	Madras, E. I.
			8 do	11 do	Conton.

LA  
 NE  
 Fu  
 Fu  
 Day of W.  
 M  
 T  
 W  
 Th.  
 F  
 S  
 Su.  
 M  
 T  
 W  
 Th  
 F  
 S  
 Su.  
 M  
 T  
 W  
 Th.  
 F  
 S  
 Su.  
 M  
 T  
 W



JANUARY, 1877.

MOON'S PHASES,

Calculated for Mean Time at St. John's, Newfoundland.

LAST QUARTER.....	6th day,	10h, 47m,	Morning.
NEW MOON.....	14th day,	9h, 57m,	Morning.
FIRST QUARTER.....	22nd day,	0h, 23m,	Evening.
FULL MOON.....	29th day,	5h, 8m,	Morning.

Day of W.	Day of M.	Sun		G. app. time.		High		Memoranda, &c.
		rises	sets	Sun's Declination.	Eqa. of time.	Water at St. John's.		
		at St. John's.	at St. John's.	o	'	m. s.	a. m. p. m.	
M	1	7 55	4 13	S 22	58	4 0	8 2 8 27	Circumcision.
T	2	7 54	4 11	22	53	4 28	8 54 9 18	
W	3	7 54	4 15	22	47	4 55	9 43 10 7	Port Royal, Jamaica,
Th.	4	7 54	4 16	22	41	5 23	10 32 10 56	Burnt, 1703.
F	5	7 54	4 17	22	34	5 50	11 17 11 43	
S	6	7 54	4 19	22	27	6 16	0 7 . . .	Epiphany.
Su.	7	7 53	4 20	22	19	6 42	0 55 1 19	St. Dismas's Day.
M	8	7 53	4 21	22	11	7 7	1 50 2 14	Bat. New Orleans, '15.
T	9	7 53	4 22	22	3	7 32	3 24 3 28	R. C. Cathedral
W	10	7 52	4 24	21	54	7 57	4 17 4 41	opened, 1850.
Th	11	7 52	4 25	21	44	8 21	5 6 5 30	10—Penny postage,
F	12	7 51	4 26	21	34	8 44	5 55 6 19	Great Britain, '40.
S	13	7 51	4 27	21	24	9 6	6 43 7 7	
Su.	14	7 50	4 29	21	14	9 28	7 24 7 48	R. Bruce died, 1611.
M	15	7 49	4 30	21	3	9 50	8 0 8 24	James Watt b., 1736.
T	16	7 49	4 31	20	51	10 10	8 32 8 56	Bat. of Cornma, '09.
W	17	7 48	4 33	20	39	10 30	9 1 9 28	B. Franklin b., 1706.
Th.	18	7 47	4 34	20	27	10 49	9 35 9 59	
F	19	7 46	4 36	20	14	11 8	10 7 10 31	D. Webster b., 1782.
S	20	7 45	4 37	20	1	11 25	10 38 11 2	
Su.	21	7 44	4 38	19	48	11 42	11 12 11 36	
M	22	7 44	4 40	19	34	11 58	0 0 . . .	Byron born, 1733.
T	23	7 43	4 42	19	20	12 14	0 39 1 3	Wm. Pitt died, 1806
W	24	7 42	4 43	19	6	12 28	1 37 2 1	Fox born, 1749.
Th.	25	7 41	4 45	18	51	12 42	2 58 3 22	Conversion St. Paul.
F	26	7 40	4 46	18	36	12 55	4 23 4 47	Dr. Jenner died, 1823
S	27	7 38	4 48	18	20	13 7	5 18 5 42	Mozart died, 1756.
Su.	28	7 37	4 49	18	5	13 18	6 13 6 37	Colonial Building
M	29	7 36	4 51	17	48	13 28	7 8 7 32	opened, 1850. Sep-
T	30	7 35	4 52	17	32	13 38	7 56 8 20	tuagesima Sunday.
W	31	7 33	4 54	17	15	13 7	8 42 9 6	

**T. McKENNIE,**

**HOUSE, SHIP, SIGN**

And **Ornamental Painter,**

296 WATER STREET.

FEBRUARY, 1877.

MOON'S PHASES.

Calculated for Mean Time at St. John's, Newfoundland.

LAST QUARTER.....	5th day,	1h, 29m, Morning.
NEW MOON.....	13th day,	5h, 28m, Evening.
FIRST QUARTER.....	21st day,	0h, 45m, Morning.
FULL MOON.....	27th day,	3h, 44m, Evening.

Day of W.	Day of M.	Sun		G. app. time.				High Water at St. John's.		Memoranda, &c.
		rises at St. John's.	Sets at St. John's.	Sun's Declination.	Equa of time. add.	a.	p.	m.	u.	
Th.	1	7 32	4 55	S 16 58	13 54	9 26	9 50			
F	2	7 31	4 57	16 41	14 21	9 10	9 33			Candlemas Day.
S	3	7 29	4 59	16 23	14 8	10 40	11 12			1st Ses. 10th General Assembly opened.
Su.	4	7 28	5 0	16 5	14 13	11 26	11 50			Sir R. Peel b., 1788.
M	5	7 27	5 2	15 47	14 18	0 31	...			Fish Convention laid before Leg., 1857.
T	6	7 25	5 3	15 29	14 22	1 0	1 23			Mary Queen of Scots beheaded, 1587.
W	7	7 24	5 5	15 10	14 25	2 7	2 31			Queen Victoria married, 1840.
Th.	8	7 22	5 7	14 51	14 27	3 39	4 3			11—Quinquagesima, Shrove Sunday.
F	9	7 20	5 8	14 32	14 29	4 25	4 29			St. Valentines Day—Ash Wednesday.
S	10	7 19	5 10	14 12	14 30	5 39	6 3			Dr. Kane died, 1857.
Su.	11	7 17	5 11	13 52	14 30	6 31	6 55			Benevolent Irish Society founded, 1806.
M	12	7 16	5 12	13 32	14 29	7 12	7 36			18—1st Sunday in Lent.
T	13	7 14	5 13	13 12	14 28	7 44	8 8			Washington b., 1732
W	14	7 13	5 15	12 52	14 25	8 24	8 38			
Th.	15	7 11	5 16	12 31	14 22	8 47	9 5			
F	16	7 9	5 18	12 10	14 19	9 15	9 34			
S	17	7 7	5 19	11 49	14 14	9 49	10 3			
Su.	18	7 6	5 21	11 28	14 9	10 18	10 33			
M	19	7 4	5 22	11 7	14 3	10 47	11 4			
T	20	7 3	5 24	10 45	13 57	11 22	11 40			
W	21	7 2	5 25	10 24	13 50	0 25	...			
Th	22	7 0	5 26	10 2	13 42	1 0	1 24			
F	23	6 59	5 27	9 40	13 33	2 6	2 51			
S	24	6 57	5 29	9 18	13 24	3 31	4 20			St. Matthias.
Su.	25	6 55	5 30	8 55	13 14	4 21	5 22			
M	26	6 52	5 32	8 33	13 4	5 55	6 28			
T	27	6 51	5 34	8 10	12 53	6 48	7 19			Longfellow born, 1807.
W	28	6 49	5 35	S 7 48	12 42	7 40	8 3			

PLAIN AND ORNAMENTAL

BLOCK LETTER SIGNS,

In the best style.

GILDING done in a Superior style

At T. McKENZIE'S.

J.A. No. Fin. Fun. Day of W. Th. F. S. Su. M. T. W. Th. F. S. Su. M. T. W. Th. F. S. Su. M. T. W. Th. F. S. Y.

MARCH, 1877.

MOON'S PHASES,

Calculated for Mean Time at St. John's, Newfoundland.

LAST QUARTER.....	6th day, 6h, 30m, Evening.
NEW MOON.....	14th day, 11h, 23m, Evening.
FIRST QUARTER.....	22nd day, 9h, 30m, Morning.
FULL MOON.....	29th day, 2h, 18m, Morning.

Day of W.	Day of M.	Sun rises		Sun sets		G. opp. Moon		Equa of time		High Water at St. John's.	Memoranda, &c.				
		h.	m.	h.	m.	°	'	m.	s.						
Th	1	6	46	5	39	S	7	25	12	30	8	20	8	46	St. David.
F	2	6	44	5	41		7	2	12	17	9	5	9	24	J. Wesley died, 1791
S	3	6	42	5	42		6	39	12	5	9	4	10	3	
Su	4	6	40	5	41		6	16	11	51	10	20	10	37	
M	5	6	38	5	45		5	53	11	7	10	53	11	13	30—Treaty of Peace with Russia, 1856.
T	6	6	36	5	47		5	30	11	23	11	33	11	33	
W	7	6	34	5	48		5	6	11	9	0	42			
Th	8	6	32	5	50		4	43	10	54	1	22	1	48	William III. d., 1702
F	9	6	30	5	51		4	19	10	39	2	38	3	28	
S	10	6	28	5	53		3	56	10	23	4	13	4	58	Prince of Wales married, 1863.
Su	11	6	26	5	54		3	32	10	7	5	18	5	37	
M	12	6	24	5	56		3	9	9	51	6	3	6	30	
T	13	6	22	5	57		2	45	9	34	6	48	7	7	
W	14	6	20	5	58		2	21	9	17	7	23	7	40	
T	15	6	18	5	59		1	58	9	0	7	54	8	8	Cæsar assassinated, B.C., 44.
F	16	6	16	6	1		1	34	8	43	8	21	8	34	St. Patrick's Day.
S	17	6	14	6	3		1	10	8	26	8	48	9	3	
Su	18	6	12	6	4		0	47	8	8	9	18	9	34	
M	19	6	10	6	6	S	0	23	7	50	9	49	10	5	
T	20	6	8	6	7	N	0	0	7	32	10	21	10	38	Sir Isaac Newton d., 1726.
W	21	6	6	6	8		0	24	7	14	10	54	11	15	
Th	22	6	4	6	10		0	47	6	56	11	34	0	0	
F	23	6	2	6	11		1	11	6	37	0	30	1	12	
S	24	6	0	6	13		1	34	6	19	1	58	2	49	
Su	25	5	58	6	14		1	58	6	1	3	24	4	29	Lady Day—Palm Sunday.
M	26	5	56	6	16		2	22	5	42	4	54	5	19	
T	27	5	54	6	17		2	45	5	23	5	45	6	11	
W	28	5	52	6	18		3	8	5	5	6	34	6	58	Raphael born, 1843.
Th	29	5	50	6	20		3	32	4	46	7	18	7	38	
F	30	5	48	6	21		3	55	4	28	7	58	8	17	Good Friday.
S	31	5	46	6	23	N	4	18	4	10	8	36	8	55	

You will get your PAINTING, GRAINING, PAPER HANGING, WHITEWASHING, Etc., done CHEAP and GOOD, by going to

T. McKENZIE, 296 Water Street.

APRIL, 1877.

MOON'S PHASES,

Calculated for Mean Time at St. John's, Newfoundland.

LAST QUARTER.....	5th day,	Ch, 59m, Evening.
NEW MOON.....	13th day,	2h, 19m, Evening.
FIRST QUARTER.....	20th day,	4h, 7m, Evening.
FULL MOON.....	27th day,	1h, 5m, Evening.

Day of W.	Day of M.	Sun		G. app. time.		High		Memoranda, &c.
		rises at St. John's.	sets at St. John's.	Sun's Declination.	Equation.	Water at St. John's.		
		h. m.	h. m.	° ' "	m. s.	a. m.	p. m.	
Su.	1	5 44	6 24	N 4 41	3 51	9 8	9 32	Easter Sunday.
M	2	5 42	6 25	5 4	3 33	9 48	10 8	
T	3	5 40	6 27	5 27	3 15	10 24	10 45	
W	4	5 38	6 28	5 50	2 57	1 4	11 24	
Th.	5	5 36	6 30	6 13	2 40	0 13		
F	6	5 34	6 31	6 36	2 22	0 43	1 18	Goldsmith born, 1774
S	7	5 2	6 32	6 53	2 5	2 4	2 44	Wordsworth b., 1770
Su.	8	5 31	6 33	7 21	1 43	3 28	4 15	Low Sunday.
M	9	5 28	6 35	7 43	1 32	4 48	5 22	
T	10	5 26	6 36	8 5	1 15	5 36	5 47	Lord Bacon d., 1620.
W	11	5 24	6 38	8 27	0 59	6 7	6 27	
Th.	12	5 22	6 39	8 49	0 43	6 33	6 59	Lincoln ass'ed. 1865
F	13	5 20	6 41	9 11	0 28	7 15	7 31	Catholic Emancipation, 1829.
S	14	5 18	6 42	9 33	0 12	7 47	8 1	
Su	15	5 16	6 44	9 54	0 1	8 17	8 33	Franklin died, 1790.
M	16	5 15	6 45	10 15	0 16	8 49	9 6	Bat. of Culloden, 1746
T	17	5 13	6 46	10 36	0 30	9 22	9 44	Shakespeare b., 1564.
W	18	5 11	6 48	10 57	0 44	10 2	10 23	
Th.	19	5 9	6 49	11 18	0 57	10 39	11 7	Byron died, 1824.
F	20	5 7	6 50	11 39	1 10	0 5		
S	21	5 5	6 52	11 59	1 23	0 48	1 17	
Su.	22	5 4	6 53	12 19	1 35	1 57	2 46	
M	23	5 2	6 54	12 39	1 47	3 26	4 10	St. George.
T	24	5 0	6 56	12 59	1 58	4 42	5 15	Cromwell born, 1599
W	25	4 58	6 57	13 19	2 9	5 29	5 43	St. Mark.
Th.	26	4 56	6 59	13 38	2 19	6 3	6 28	Plague of London, 1655.
F	27	4 55	7 0	13 57	2 29	6 44	7 11	
S	28	4 53	7 2	14 16	2 38	7 31	7 50	
Su.	29	4 51	7 3	14 35	2 47	8 10	8 30	Joan of Arc enters Orleans, 1429.
M	30	4 50	7 4	N 14 53	2 55	8 48	9 8	

Equation of time to be added to apparent time to the 14th, and to be subtracted the remainder of the month.

ROOM, HALL and BEDROOM PAPERS

In every style; warranted 12 yards long.

At T. MCKENZIE'S, 296 Water Street.

MAY, 1877.

MOON'S PHASES

Calculated for Mean Time at St. John's, Newfoundland.

LAST QUARTER.....	5th day,	7h, 48m,	Morning.
NEW MOON.....	13th day,	1h, 59m,	Morning.
FIRST QUARTER.....	19th day,	9h, 26m,	Evening.
FULL MOON.....	27th day,	0h, 35m,	Morning.

Day of W.	Day of M.	Sun		G. app. time.		Equa of time.	High Water at St. John's.	Memoranda, &c.
		rises at St. John's.	Sun sets at St. John's.	Sun's Declination.	Sun's Declination.			
		h. m.	h. m.	° ' "	° ' "	m. s. a.	m. p. m.	
T	1	4 48	7 6	N 15 11	3 3	9 28	9 46	S. S. Philip & James
W	2	4 47	7 7	15 29	3 10	10 10	10 25	
Th.	3	4 45	7 8	15 47	3 17	10 45	11 4	Gov'r. Darling sworn
F	4	4 43	7 10	16 4	3 23	11 32	11 51	into office, 1855.
S	5	4 42	7 11	16 21	3 28	.. .	0 48	4—Abdication of Na-
Su.	6	4 40	7 12	16 38	3 33	1 11	1 57	oleon I, 1814.
M	7	4 39	7 14	16 55	3 37	2 22	3 13	5—Napoleon I died
T	8	4 38	7 15	17 11	3 41	3 43	4 20	at St. Helena, 1821
W	9	4 36	7 16	17 27	3 44	4 46	5 13	6—Peace proclaim'd
Th.	10	4 35	7 18	17 43	3 47	5 24	5 36	between the allied
F	11	4 33	7 19	17 58	3 49	5 52	6 14	powers & Russia,
S	12	4 32	7 20	18 14	3 50	6 34	6 53	1856.—Rog'n. Sun.
Su.	13	4 31	7 21	18 28	3 51	7 9	7 29	10—Holy Thursday.
M	14	4 29	7 23	18 43	3 51	7 45	8 7	11—Massacre at
T	15	4 28	7 24	18 57	3 51	8 27	8 46	Delhi, 1857.
W	16	4 27	7 25	19 11	3 50	9 9	9 32	
Th.	17	4 26	7 27	19 25	3 48	9 56	10 19	12—General Election
F	18	4 24	7 28	19 38	3 46	10 44	11 9	under new Constitu-
S	19	4 23	7 29	19 51	3 44	.. .	0 8	tion, 1855.
Su.	20	4 22	7 30	20 3	3 41	0 41	1 15	Foundation st. Catholic
M	21	4 21	7 31	20 16	3 57	1 50	2 26	Cathedral laid, 1846
T	22	4 20	7 32	20 27	3 33	3 1	3 38	1—Gov. Glover sworn
W	23	4 19	7 33	20 39	3 29	4 10	4 40	into office, 1876.
Th.	24	4 18	7 34	20 50	3 23	5 0	5 22	Birth of Queen Victo-
F	25	4 17	7 35	21 1	3 18	5 38	5 59	ria.
S	26	4 16	7 36	21 11	3 12	6 23	6 48	13—Pius IX b., 1792.
Su.	27	4 15	7 38	21 22	3 5	7 11	7 33	1st Leg. Gen. As-
M	28	4 14	7 40	21 31	2 58	7 53	8 13	sembly opened. Ri-
T	29	4 13	7 41	21 41	2 51	8 28	8 52	ots in Water-st., '61.
W	30	4 13	7 41	21 50	2 43	9 8	9 30	27—Trinity Sunday.
Th.	31	4 12	7 42	N 21 58	2 34	9 48	10 8	Corpus Christi.

T. MCKENZIE,

HOUSE, SHIP, SIGN  
 And Ornamental Painter,  
 206 WATER STREET.



**JUNE, 1877.**

MOON'S PHASES,

*Calculated for Mean Time at St. John's, Newfoundland.*

LAST QUARTER.....	4th day,	1h, 41m,	Morning.
NEW MOON.....	11th day,	11h, 2m,	Morning.
FIRST QUARTER.....	18th day,	2h, 54m,	Morning.
FULL MOON.....	25th day,	1h, 22m,	Evening.

Day of W.	Day of M.	Sun		( <i>g. app. time.</i> )		Equa.		High		Memoranda, &c.	
		rises	sets	Sun's Declination.	time.	of	Water at St. John's.				
		at St. John's.	at St. John's.	°	'	m.	s.	a. m.	p. m.		
F	1	4 12	7 43	N 22	6	2	25	10	22	10 46	
S	2	4 12	7 44	22	14	2	16	11	8	11 29	
Su.	3	4 11	7 45	22	22	2	7	...	...	0 16	George III. b., 1738.
M	4	4 10	7 45	22	29	1	57	0	30	1 6	Battle of Magenta, 1859.
T	5	4 10	7 46	22	35	1	46	1	30	2 4	
W	6	4 10	7 47	22	42	1	36	2	37	3 10	
Th.	7	4 9	7 48	22	48	1	25	3	38	4 7	
F	8	4 9	7 48	22	53	1	13	4	35	5 3	
S	9	4 9	7 49	22	58	1	2	5	19	5 40	Great Fire, 1846.—
Su.	10	4 8	7 50	23	3	0	50	5	58	6 17	Gov'r. Bannerman sworn into office.
M	11	4 8	7 51	23	7	0	38	6	41	7 5	
T	12	4 8	7 51	23	11	0	25	7	27	7 50	
W	13	4 7	7 52	23	14	0	13	8	13	8 37	Magna Charta signed 1215.
Th.	14	4 7	7 52	23	17	0	0	9	1	9 26	
F	15	4 6	7 53	23	20	0	12	9	52	10 17	
S	16	4 6	7 53	23	22	0	25	10	43	11 7	
Su.	17	4 6	7 54	23	24	0	37	11	26	...	John Wesley b., 1703.
M	18	4 5	7 54	23	25	0	50	0	24	0 58	Battle of Waterloo, 1815.
T	19	4 6	7 55	23	26	1	3	1	26	1 55	
W	20	4 7	7 55	23	27	1	16	2	27	2 58	Accession of Queen Victoria.
Th.	21	4 7	7 55	23	27	1	29	3	30	4 2	
F	22	4 8	7 56	23	27	1	42	4	33	5 5	21—Proclamation Q. Victoria, 1837.
S	23	4 8	7 56	23	26	1	55	5	21	5 37	
Su.	24	4 9	7 56	23	25	2	8	6	5	6 31	St. John Baptist—
M	25	4 9	7 56	23	23	2	20	6	55	7 21	Midsummer Day.
T	26	4 10	7 56	23	21	2	33	7	41	8 1	29—St. Michael—
W	27	4 10	7 56	23	19	2	45	8	21	8 41	Michaelmas Day—
Th.	28	4 10	7 56	23	16	2	57	8	59	9 17	9th Gen. Assembly of Newfd. dissolved, 1869.
F	29	4 11	7 56	23	13	3	9	9	35	9 54	
S	30	4 11	7 56	N 23	10	3	21	10	11	10 29	

Equation of time to be subtracted from apparent time to the 14th, and to be added the remainder of the month.

**SHIPS FIGURE HEADS**

At T. McKENZIE'S,

206 WATER STREET.

**JULY, 1877.**

MOON'S PHASES,

*Calculated for Mean Time at St. John's, Newfoundland.*

LAST QUARTER.....	3rd day,	5h, 31m, Evening.
NEW MOON.....	10th day,	6h, 30m, Evening.
FIRST QUARTER.....	17th day,	9h, 42m, Morning.
FULL MOON.....	25th day,	3h, 49m, Morning.

Day of W.	Day of M.	Sun		G. app. time.		High			Memoranda, &c.
		rises	sets	Sun's Decli- nation.	Equa. of time.	Water at St. John's			
		h. m.	h. m.	° '	m. s.	a. m.	p. m.		
St.	1	4 12	7 55	N 23 6	3 33	10 42	11 5	Sir R. Peel died, 1850.	
M	2	4 13	7 55	23 1	3 44	11 23	11 42	Dominion Canada	
T	3	4 13	7 54	22 57	3 55	...	0 23	inaugurated, 1867.	
W	4	4 14	7 54	22 51	4 6	0 45	1 7	American Indepen-	
Th.	5	4 15	7 54	22 46	4 17	1 32	1 58	dence, 1776.	
F	6	4 15	7 53	22 40	4 27	2 31	3 45	—Princess Helena	
S	7	4 16	7 53	22 34	4 37	3 38	4 12	married, 1866.	
Su.	8	4 17	7 53	22 27	4 46	4 45	5 19	7—Free Trade Act	
M	9	4 18	7 52	22 20	4 55	5 35	5 51	passed, 1855.	
T	10	4 19	7 51	22 12	5 4	6 18	6 48	Cape Ray and Cape	
W	11	4 19	7 51	22 4	5 12	7 14	7 39	Breton electric Cable	
Th.	12	4 21	7 50	21 56	5 20	8 2	8 29	laid, 1856.	
F	13	4 21	7 50	21 47	5 27	8 53	9 18	Havelocks victory at	
S	14	4 22	7 49	21 38	5 34	9 42	10 6	Falchpore, 1857.	
Su.	15	4 23	7 48	21 29	5 41	10 29	10 54	St. Swithen's Day.	
M	16	4 24	7 47	21 19	5 46	11 17	11 40		
T	17	4 25	7 46	21 9	5 52	...	0 26	Havelock re-takes	
W	18	4 26	7 45	20 58	5 56	0 50	1 15	Cawnpore, 1857.	
Th.	19	4 27	7 44	20 48	6 1	1 44	2 12	Governor Hill, C.B.,	
F	20	4 28	7 43	20 36	6 4	2 49	3 26	arrived in Nfld., '69.	
S	21	4 29	7 42	20 25	6 7	4 5	4 44		
Su.	22	4 30	7 41	20 13	6 10	5 9	5 33		
M	23	4 32	7 40	20 1	6 12	5 58	6 22	Prince of Wales ar-	
T	24	4 33	7 39	19 48	6 13	6 42	7 11	rived at St. John's,	
W	25	4 34	7 38	19 35	6 14	7 31	7 51	1860.	
Th.	26	4 35	7 37	19 22	6 14	8 6	8 26		
F	27	4 36	7 36	19 9	6 13	8 38	9 0	Second Atlantic Cable	
S	28	4 37	7 35	18 55	6 12	9 16	9 32	laid, 1866.	
Su.	29	4 38	7 34	18 41	6 10	9 48	10 4	French Revolution,	
M	30	4 39	7 32	18 26	6 8	10 19	10 33	1830.	
T	31	4 41	7 31	N 18 11	6 5	10 48	11 4	I. Loyola died, 1556.	

**Painting, Graining and Gilding,**

**At T. McKENZIE'S,**

206 WATER STREET.

ing.  
ing.  
ing.

ce.

1738.  
enta,

846.—  
erman  
ice.

signed

, 1703.  
aterloo,

Queen

ation Q.  
837.

ptist—  
r Day.

ichael—  
s Day—

Assembly  
dissolved,

e to the  
l.

REET.

**AUGUST, 1877.**

MOON'S PHASES,

*Calculated for Mean Time at St. John's, Newfoundland.*

LAST QUARTER.....	2nd day,	6h, 50m, Morning.
NEW MOON .....	9th day,	1h, 47m, Morning.
FIRST QUARTER.....	15th day,	6h, 57m, Evening.
FULL MOON.....	23rd day,	7h, 40m, Evening.
LAST QUARTER.....	31st day,	5h, 45m, Evening.

Day of W.	Day of M.	Sun rises		Sun sets		(A. app. time.)		High Water at St. John's.	Memoranda, &c.
		at St. John's.	at St. John's.	Sun's Declination.	Equa. of time add.	m. s.	a. m. p. m.		
W	1	4 42	7 29	N 17 56	6 2	11 9	11 38	Slavery abolished in	
Th.	2	4 44	7 28	17 41	5 58	.. .	0 18	British Dominions,	
F	3	4 45	7 27	17 25	5 53	0 41	1 5	1834.	
S	4	4 46	7 25	17 9	5 48	1 37	2 10	1st Atlantic Telegraph	
Su.	5	4 48	7 24	16 53	5 42	2 50	3 35	Cable laid, 1856.	
M	6	4 49	7 22	16 37	5 36	4 19	4 59	Duke of Edinburgh	
T	7	4 50	7 21	16 20	5 29	5 13	5 37	born, 1844.	
W	8	4 51	7 19	16 3	5 22	6 8	6 40	Canning died, 1827.	
Th.	9	4 53	7 18	15 46	5 14	7 5	7 30	Prince Henry of the	
F	10	4 54	7 16	15 28	5 5	7 53	8 17	Netherlands arrived	
S	11	4 55	7 15	15 10	4 56	8 40	9 2	in St. John's, 1845.	
Su.	12	4 57	7 13	14 52	4 46	9 24	9 47	14—Printing invent-	
M	13	4 58	7 11	14 34	4 36	10 9	10 28	ed, 1437.	
T	14	4 59	7 9	14 16	4 25	10 47	11 7		
W	15	5 1	7 8	13 57	4 13	11 28	11 49	Gas first used in Lon-	
Th.	16	5 2	7 6	13 38	4 1	.. .	0 35	don, 1807.	
F	17	5 3	7 4	13 19	3 49	1 4	1 33		
S	18	5 5	7 3	12 59	3 35	2 12	2 52		
Su.	19	5 6	7 1	12 40	3 22	3 38	4 25		
M	20	5 7	6 59	12 20	3 8	4 51	5 18	Canada discov., 1508.	
T	21	5 9	6 57	12 0	2 53	5 45	6 12	Foundation stone Wes-	
W	22	5 10	6 55	11 40	2 38	6 34	6 57	leyan Church laid,	
Th.	23	5 11	6 54	11 20	2 23	7 16	7 35	1856.	
F	24	5 13	6 52	10 59	2 7	7 50	8 5	St. Bartholomew's	
S	25	5 14	6 50	10 39	1 50	8 20	8 34	Day.	
Su.	26	5 15	6 48	10 18	1 34	8 48	9 2	Birth of Prince Con-	
M	27	5 17	6 46	9 57	1 17	9 17	9 32	sort, 1819.	
T	28	5 18	6 44	9 35	0 59	9 47	10 2		
W	29	5 19	6 42	9 14	0 41	10 16	10 30	St. John Baptist be-	
Th.	30	5 21	6 40	8 53	0 23	10 45	11 1	headed.	
F	31	5 22	6 38	N 8 31	0 5	11 21	11 41	J. Bunyan died, 1688.	

**Room Paper & Bordering,**

In great Variety,  
**At T. McKENZIE'S,**  
 206 WATER STREET,

Day of W.  
 S  
 Su  
 M  
 T  
 W  
 Th  
 F  
 S  
 Su  
 M  
 T  
 W  
 Th  
 F  
 S  
 Su  
 M  
 T  
 W  
 Th  
 F  
 S  
 Su

SEPTEMBER, 1877.

MOON'S PHASES.

Calculated for Mean Time at St. John's, Newfoundland.

NEW MOON .....	7th day, 9h, 30m, Morning.
FIRST QUARTER .....	14th day, 7h, 37m, Morning.
FULL MOON .....	22nd day, 0h, 4m, Evening.
LAST QUARTER .....	30th day, 2h, 50m, Morning.

Day of W.	Day of M.	Sun		G. app. time.		High		Memoranda, &c.
		rises at St. John's.	Sun sets	Sun's Declination.	Equal of time. subt.	Water at St. John's.		
		h. m.	h. m.	° /	m. s	a. m.	p. m.	
S	1	5 23	6 36	N 8 9	0 13	...	0 28	
Su.	2	5 25	6 35	7 47	0 32	1 1	1 37	Atlantic Cable of 1865
M	3	5 26	6 33	7 25	0 51	2 26	3 15	grappled and secur-
T	4	5 27	6 31	7 3	1 11	4 0	4 48	ed, 1867.
W	5	5 29	6 28	6 41	1 30	5 12	5 36	
Th.	6	5 30	6 26	6 19	1 50	5 58	6 25	
F	7	5 31	6 24	5 56	2 10	6 49	7 13	
S	8	5 33	6 23	5 33	2 31	7 34	7 55	Great Eastern arrived
Su.	9	5 34	6 21	5 11	2 51	8 15	8 37	at Hearts Content
M	10	5 35	6 18	4 48	3 12	8 58	9 17	with 1865 Cable, '67
T	11	5 37	6 16	4 25	3 33	9 37	9 57	
W	12	5 38	6 14	4 2	3 54	10 17	10 36	—Catholic Cathedral
Th.	13	5 39	6 12	3 39	4 15	10 55	11 15	consecrated, 1855.
F	14	5 41	6 10	3 16	4 36	11 38	...	—First Exhibition
S	15	5 42	6 8	2 53	4 57	0 28	1 0	held in Nfld., 1872.
Su.	16	5 43	6 6	2 30	5 18	1 37	2 22	Moscow burned, 1812
M	17	5 44	6 4	2 7	5 39	3 16	4 2	
T	18	5 45	6 2	1 43	6 0	4 43	5 20	
W	19	5 46	6 0	1 20	6 22	5 35	5 49	
Th.	20	5 47	5 58	0 57	6 43	6 12	6 39	
F	21	5 49	5 56	0 34	7 4	6 48	7 5	Protestant Cathedral
S	22	5 51	5 54	N 0 10	7 25	7 20	7 34	consecrated, 1850.
Su.	23	5 52	5 53	S 0 12	7 46	7 48	8 2 22	—1st Ses. 11th Gen.
M	24	5 54	5 50	0 36	8 7	8 16	8 30	Assembly dis., 1874.
T	25	5 56	5 48	0 59	8 27	8 43	8 58	Pacific Ocean dis-
W	26	5 57	5 46	1 22	8 48	9 13	9 29	covered, 1513.
Th	27	5 58	5 44	1 46	9 8	9 45	10 0	Strasbourg falls, '70.
F	28	6 0	5 42	2 9	9 28	10 16	10 33	
S	29	6 1	5 40	2 33	9 48	10 54	11 16	St. Michael.
Su.	30	6 2	5 38	S 2 56	10 7	11 42	...	

VENETIAN BLINDS,

Repaired and Mounted

At T. MCKENZIE'S,

296 WATER STREET.

OCTOBER, 1877.

MOON'S PHASES,

Calculated for Mean Time at St. John's, Newfoundland.

NEW MOON ..... 6th day, 6h, 28m, Evening.  
 FIRST QUARTER ..... 14th day, 0h, 12m, Morning.  
 FULL MOON ..... 22nd day, 4h, 0m, Morning.  
 LAST QUARTER .... 29th day, 10h, 51m, Morning.

Day of W.	M.	Day of M.	Sun		G. app. time.		High Water at St. John's.		Memoranda, &c.
			rises at St. John's.	Sets at St. John's.	Sun's Declination.	Equal time. subt.	a. m.	p. m.	
M	1	6	4	5 36	S	3	19 10 26	0 44 1 27	1st Telegraph Message from C. Breton, '56 First Steamer on River Hudson, '07. Battle Thames, 1813. Jenny Lind b., 1820. Great fire in Chicago, 1871. America discovered, 1492. Battle of Jenna, 1806 Queen Marie Antoinette beheaded, 1793. Battle of Trafalgar, 1805. Webster died, 1852. Battle Balaklava, '54 Benevolent Irish Society Incorporated, 1839.
T	2	6	5	5 33		3	43 10 45	2 14 3 8	
W	3	6	6	5 31		4	6 11 3	3 55 4 34	
Th	4	6	8	5 29		4	29 11 22	5 10 5 23	
F	5	6	9	5 27		4	52 11 39	5 40 6 4	
S	6	6	11	5 25		5	15 11 57	6 28 6 49	
Sa	7	6	12	5 23		5	38 12 14	7 9 7 29	
M	8	6	14	5 22		6	1 12 30	7 50 8 10	
T	9	6	15	5 20		6	24 12 47	8 30 8 50	
W	10	6	17	5 18		6	47 13 2	9 9 9 29	
Th	11	6	18	5 16		7	10 13 18	9 49 10 8	
F	12	6	20	5 14		7	32 13 32	10 26 10 46	
S	13	6	21	5 12		7	55 13 47	11 9 11 35	
Sa	14	6	22	5 10		8	17 14 0	.. . 0 32	
M	15	6	24	5 8		8	39 14 14	1 9 1 51	
T	16	6	25	5 6		9	1 14 26	2 36 3 23	
W	17	6	27	5 4		9	23 14 38	4 2 4 37	
T	18	6	28	5 2		9	45 14 50	5 7 5 15	
F	19	6	30	5 0		10	7 15 1	5 30 5 52	
S	20	6	31	4 58		10	29 15 11	6 9 6 28	
Sa	21	6	33	4 57		10	50 15 21	6 44 6 59	
M	22	6	34	4 55		11	11 15 30	7 15 7 29	
T	23	6	36	4 53		11	32 15 38	7 44 7 59	
W	24	6	37	4 51		11	53 15 46	8 16 8 30	
Th	25	6	39	4 50		12	14 15 53	8 47 9 4	
F	26	6	40	4 48		12	34 15 59	9 23 9 41	
S	27	6	42	4 46		12	55 16 4	9 59 10 19	
Sa	28	6	43	4 45		13	15 16 9	10 42 11 7	
M	29	6	45	4 43		13	35 16 13	11 35 .. .	
T	30	6	46	4 41		13	55 16 16	0 42 1 28	
W	31	6	48	4 40	S	14	14 16 18	2 5 2 52	

Paints, Oils, Varnishes,  
 Glass, Glue, Putty, Etc.,  
 At T. McKENZIE'S,  
 206 WATER STREET.

NE  
 Fu  
 Fu  
 LA  
  
 Day of W.  
  
 Th.  
 F  
 S  
 Su.  
 M  
 T  
 W  
 Th.  
 F  
 S  
 Su.  
 M  
 T  
 W  
 Th.  
 F  
 S  
 Su.  
 M  
 T  
 W  
 Th.  
 F  
 S  
 Su.  
 M  
 T  
 W  
 Th.  
 F

F

**NOVEMBER, 1877.**

MOON'S PHASES,

*Calculated for Mean Time at St. John's, Newfoundland.*

NEW MOON ..... 5th day, 5h, 17m, Morning.  
 FIRST QUARTER ..... 12th day, 8h, 14m, Evening.  
 FULL MOON ..... 20th day, 6h, 49m, Evening.  
 LAST QUARTER ..... 27th day, 7h, 3m, Evening.

Day of W.	Day of M.	Sun		G. opp. time.		High		Memoranda, &c.
		rises	sets	Sun's Declination.	Equa of time. subt.	Water at St John's.		
		h. m.	h. m.	° /	m. s.	a. m.	p. m.	
Tu.	1	6 49	4 38	S 14 33	16 19	3 33	4 9	All Saints' Day.
F	2	6 51	4 36	14 52	16 20	4 42	5 11	All Souls' Day.
S	3	6 53	4 35	15 11	16 20	5 23	5 36	Free St. Andrews' Church opened, '50.
Su.	4	6 54	4 33	15 30	16 19	6 0	6 22	Bat. Inkerman, 1854.
M	5	6 56	4 32	15 48	16 17	6 45	7 7	
T	6	6 57	4 30	16 6	16 14	7 27	7 49	
W	7	6 59	4 29	16 24	16 11	8 8	8 29	
Th.	8	7 0	4 27	16 41	16 6	8 49	9 9	
F	9	7 2	4 26	16 59	16 1	9 30	9 50	Prince Wales b., '41.
S	10	7 3	4 25	17 16	15 55	10 10	10 29	Newfoundland and N. York Telegraph opened, 1856.
Su.	11	7 5	4 24	17 32	15 48	10 49	11 13	
M	12	7 6	4 22	17 49	15 41	11 38	.. .	
T	13	7 8	4 21	18 5	15 32	0 34	1 6	
W	14	7 10	4 20	18 20	15 23	1 40	2 16	Mozart born, 1719.
Th.	15	7 11	4 19	18 36	15 12	2 56	3 30	
F	16	7 12	4 18	18 51	15 1	4 3	4 32	
S	17	7 14	4 16	19 5	14 50	4 56	5 20	Suez Canal opened, 1869.
Su.	18	7 15	4 15	19 20	14 37	5 30	5 42	
M	19	7 17	4 14	19 34	14 23	6 1	6 20	
T	20	7 18	4 13	19 47	14 9	6 39	6 58	
W	21	7 20	4 12	20 1	13 54	7 16	7 34	
Th.	22	7 21	4 11	20 14	13 38	7 51	8 10	St. Cecilia.
F	23	7 23	4 11	20 26	13 22	8 30	8 49	
S	24	7 24	4 10	20 38	13 4	9 10	9 33	
Su.	25	7 26	4 9	20 50	12 46	9 54	10 18	
M	26	7 27	4 8	21 2	12 27	10 42	11 28	
T	27	7 28	4 7	21 13	12 7	11 36	.. .	First steam printing, 1814.
W	28	7 30	4 7	21 23	11 47	0 36	1 10	
Th.	29	7 31	4 6	21 33	11 25	1 45	2 19	
F	30	7 32	4 6	S 21 43	11 3	2 56	3 29	St. Andrew.

**BRITISH, FRENCH and AMERICAN ROOM PAPER**

(In great Variety,)

At T. MCKENZIE'S, 236 Water Street.

ning.  
ning.  
ning.  
ning.

Sc.

essage  
on, '56  
er on  
n, '07.  
, 1813.  
1820.

Chi-

vered,

a, 1806

Antoi-  
ded,

falgar,

, 1852.  
ava, '54

ish So-  
orated,

Etc.,

REET.

**DECEMBER, 1877.**

MOON'S PHASES,

*Calculated for Mean Time at St. John's, Newfoundland.*

NEW MOON .....	4th day,	6h, 33m, Evening.
FIRST QUARTER .....	12th day,	6h, 4m, Evening.
FULL MOON .....	20th day,	8h, 21m, Morning.
LAST QUARTER .....	27th day,	2h, 49m, Morning.

Day of W.	Day of M.	Sun		G. app. time.		High Water at			Memoranda, &c.		
		rises	sets	Sun's Declination.	Equ. of time. subt	St. John's.					
		h.	m.	°	'	m.	s.	a. m.	p. m.		
S	1	7	33	4	5	S 21	53	10 41	4 2	4 34	Bat. Austerlitz, 1805
Su.	2	7	35	4	5	22	1	10 18	5 4	5 16	1st Sun. in Advent.
M	3	7	36	4	4	22	10	9 54	5 32	5 57	St. Andrews' Kirk opened, 1843.
T	4	7	37	4	4	22	18	9 29	6 23	6 48	
W	5	7	38	4	3	22	26	9 4	7 12	7 35	
Th.	6	7	39	4	3	22	33	8 39	7 55	8 15	St. Nicholas.
F	7	7	40	4	3	22	40	8 12	8 37	8 57	
S	8	7	42	4	3	22	46	7 46	9 17	9 37	Sons of Temperance organized in Nfld., 1850.
Su.	9	7	43	4	3	22	52	7 19	9 57	10 15	
M	10	7	44	4	3	22	58	6 52	10 34	10 53	
T	11	7	44	4	3	23	3	6 24	11 15	11 37	
W	12	7	45	4	3	23	7	5 56	11 59	0 22	
Th.	13	7	46	4	3	23	11	5 27	...	1 11	
F	14	7	47	4	3	23	15	4 58	1 37	2 7	George Street Wesleyan Church opened, 1873.
S	15	7	48	4	3	23	18	4 29	2 39	3 13	
Su.	16	7	49	4	3	23	21	4 0	3 34	4 14	
M	17	7	49	4	4	23	23	3 31	4 34	5 13	
T	18	7	50	4	4	23	25	3 1	5 25	5 39	
W	19	7	51	4	4	23	26	2 31	6 4	6 27	
Th.	20	7	51	4	5	23	27	2 2	6 51	7 14	
F	21	7	52	4	5	23	27	1 32	7 36	7 57	St. Thomas.
S	22	7	52	4	6	23	27	1 2	8 19	8 43	
Su.	23	7	53	4	6	23	26	0 32	9 5	9 29	
M	24	7	53	4	7	23	25	0 2	9 53	10 15	
T	25	7	53	4	7	23	24	0 27	10 39	11 3	CHRISTMAS DAY.
W	26	7	54	4	8	23	22	0 57	11 28	11 53	St. Stephen.
Th.	27	7	54	4	9	23	19	1 26	...	0 46	St. John.
F	28	7	54	4	9	23	16	1 56	1 12	1 40	Innocents Day.
S	29	7	54	4	10	23	13	2 25	2 12	2 46	
Su.	30	7	55	4	11	23	9	2 54	3 23	3 57	
M	31	7	55	4	12	S 23	4	3 23	4 32	5 8	

Equation of time to be subtracted from apparent time to the 24th, and to be added the remainder of the month.

**HOUSE, SHIP and SIGN PAINTING,**

In all its Branches,

By **T. McKENZIE**, 296, Water Street.



### The Royal Family of Great Britain.

ALEXANDER VICTORIA, by the Grace of God, of the United Kingdom of Great Britain and Ireland, Queen, only daughter and heir to the late Prince Edward, Duke of Kent, fourth son of King George III. Her Majesty was born at Kensington Palace, on the 24th May, 1819; baptised on the 24th June, 1819; ascended the throne on the demise of her uncle, King William IV., 20th June, 1837; proclaimed 21st, June, 1837; and crowned at Westminster on the 28th June, 1838. Her Majesty was married at St. James's Palace, on the 10th February, 1840, to her cousin, his late Royal Highness, Francis-Albert-Augustus-Charles-Emanuel, Duke of Saxe, Prince of Coburg and Gotha, who died at Windsor Castle, on the 14th December, 1861. Children:—

Victoria-Adelaide-Mary-Louisa, *Princess Royal*, born 21st Nov., 1840; married 25th Jan., 1858, at the Chapel Royal, to His Royal Highness, Prince Frederick-William-Nicholas-Charles, of Prussia.

Albert-Edward, *Prince of Wales and Earl of Dublin*, born 9th November, 1841; married 10th March, 1863, at Windsor, to Princess Alexandra, daughter of Prince Christian, of Denmark.

Alice-Maud-Mary, born 25th April, 1843; married 1st July, 1862, at Osborne, to His Royal Highness, Prince Frederick-William-Louis, of Hesse-Darmstadt.

Alfred-Earnest-Albert, born 6th August, 1844; married 26th February, 1874, to Her Imperial Highness, Marie-Alexandrovna, daughter of the Czar of Russia.

Helena-Augusta-Victoria, born 25th May, 1846; married 5th July, 1866, to His Royal Highness, Prince Christian, of Schleswig Holstein Sonderburg Augustenburg.

Louisa-Caroline-Alberta, born 8th March, 1848; married 23rd March, 1871, to the Most noble the Marquis of Lorne.

Arthur-William-Patrick-Albert, born 1st May, 1850.

Leopold-George-Duncan-Albert, born 7th April, 1853.

Beatrice-Mary-Victoria-Feodore, born 14th April, 1857.

Plain and Ornamental Sign Painting by J. W. COLLIER, 6, Victoria St., St. John's, Nfld.



**Her Majesty's Chief Officers of State.**

THE CABINET.

- First Lord of the Treasury—Rt. Hon. Earl of Beaconsfield.
- Lord High Chancellor—Rt. Hon. Lord Cairns.
- Lord President of the Council—His Grace the Duke of Richmond.
- Lord Privy Seal—Rt. Hon. Earl of Malmesbury.
- Chancellor of the Exchequer—Rt. Hon. Sir Stafford H. Northcote.
- Secretary for Home Department—Rt. Hon. Richard A. Cross.
- Secretary for Foreign Affairs—Rt. Hon. Earl of Derby.
- Secretary for the Colonies—Rt. Hon. Earl of Carnarvon.
- Secretary of War—Rt. Hon. Gathorne Hardy.
- Secretary for India—Most Hon. Marquis of Salisbury.
- Postmaster-General—Lord John Manners.
- First Lord of the Admiralty—Rt. Hon. George W. Hunt.

NOT IN THE CABINET.

- President of the Board of Trade—Rt. Hon. Sir C. B. Adderley.
- President of the Poor Law Board—\_\_\_\_\_.
- Vice-President Education Committee—Rt. Hon. Lord Sandon.
- Chief Commissioner of Works, &c.—Rt. Hon. Lord H. Lennox.
- Commander-in-Chief—H. R. H. the Duke of Cambridge.
- Chancellor of Duchy of Lancaster—Rt. Hon. Col. Taylor, M.P.
- Judge-Advocate-General—Rt. Hon. Stephen, Cave, M.P.
- Under Secretaries for the Colonies—Rt. Hon. James Lowther, Rt. Hon. Robert G. W. Herbert.
- Attorney General—Sir John Holker, Q.C.
- Solicitor General—Sir Harding S. Giffard.
- Under Secretary for War—Earl of Cadogan.

IRELAND.

- Lord-Lieutenant—His Grace the Duke of Abercorn.
- Secretary for Ireland—Sir R. M. H. Beach.
- Under Secretary—T. H. Burke, Esq.
- Commissioners of the Great Seal—Rt. Hon. Sir Joseph Napier, Bart., Mr. Justice Lawson and Master Brooks.
- Lord Justice of Court of Appeal—Rt. Hon. Sir Wm. James.
- Vice-Chancellor—Rt. Hon. H. E. Chatterton.
- Attorney General—Rt. Hon. John J. Ball.
- Solicitor General—Henry Ormsby, Q.C.
- Law Adviser—Geo. A. Chicester May, Q.C.
- Commander of the Forces—Gen. Lord Strathnairn, G.C.B.
- Hereditary Lord High Steward—Adm. the Earl of Shrewsbury and Talbot.

SCOTLAND.

- Lord Justice General—Rt. Hon. John Inglis, L.L.D.
- Keeper of the Great Seal—Earl of Selkirk.
- Keeper of Privy Seal—Earl of Dalhousie, K.T., G.C.B.
- Lord Justice Clerk—Rt. Hon. James Moncrief.
- Lord Advocate—Rt. Hon. Edward S. Gordon, M.P., Q.C.
- Lord Clerk Register—Rt. Hon. Sir Wm. Gibson Craig, Bt.
- Solicitor General—John Millar, Q.C.
- Commander of the Forces—Major-General Randal Rumley.



## Colony of Newfoundland.

*Governor, Commander-in-Chief, and Vice-Admiral.*

HIS EXCELLENCY SIR JOHN HAWLEY GLOVER, K. G.  
C. M. G.

*Private Secretary.*

HERBERT G. MUNDY, Esquire.

*Colonial Aid-de-Camp.*

EDWARD L. JARVIS, Esquire.

---

### The Executive Council.

The Honorable F. B. T. Carter, *Premier.*  
The Honorable James J. Rogerson.  
The Honorable Edward D. Shea.  
The Honorable W. V. Whiteway.  
The Honorable Stephen Rendell.  
The Honorable W. J. S. Donnelly.

*Clerk of the Council*—Hon. Edward D. Shea.

---

### The Legislative Council.

The Honorable Edward Morris, *President.*  
The Honorable Robert Kent.  
The Honorable James S. Clift.  
The Honorable Edward White.  
The Honorable Peter G. Tessier.  
The Honorable John Winter.  
The Honorable Edward D. Shea.  
The Honorable William J. S. Donnelly.  
The Honorable Augustus W. Harvey.  
The Honorable Robert Thorburn.  
The Honorable Thomas Talbot.  
The Honorable Stephen Rendell.

*Clerk*—Hugh F. Carter.

*Master-in-Chancery*—Thomas J. Kough.

*Usker of the Black Rod*—William F. Rennie.

*Doorkeeper*—James Walsh.

*Assistant Doorkeeper and Messenger*—James Corcoran.

SHIPS PAINTING done at the shortest notice by J. W. COLLIER, 6, Victoria Street.

---

---

**The House of Assembly.**

[Elected November, 1874.]

*Speaker*— — — — —.

*District of St. John's East*—Robert J. Kent, Robert J. Parsons, and John J. Dearn, Esquires.

*District of St. John's West*—Lewis Tessier, Maurice Fenelon and P. J. Scott, Esquires.

*District of Conception Bay, Southern Division*—Joseph I. Little and Patrick Nowlan, Esquires.

*District of Port-de-Grave*—Nathaniel Rabbits, Esquire.

*District of Carbonear*—John Rorke, Esquire.

*District of Bay-de-Verds*—Hon. James J. Rogerson.

*District of Ferryland*—Richard Raftus and James Gerve Conroy, Esquires.

*District of Placentia and St. Mary's*—C. F. Bennett, James Collins and Michael E. Dwyer, Esquires.

*District of Harbor Grace*—Hon. Ambrose Shea and Joseph Godden, Esquire.

*District of Trinity*—Hon. W. V. Whiteway, John Steer and James H. Watson, Esquires.

*District of Bonavista*—John H. Warren, Charles Bowring and A. J. W. McNeily, Esquires.

*District of Burin*—Charles R. Ayre and James S. Winter, Esquires.

*District of Fortune Bay*—Robert Alexander, Esquire.

*District of Burgeo and LaPoile*—Alexander M. Mackay, Esquire.

*District of Twillingate and Fogo*—Hon. F. B. T. Carter, Charles Duder and William Kelligrew, Esquires.

*Clerk*—John Stuart.

*Clerk Assistant*—Richard B. Holden.

*Solicitor*—John H. Boone.

*Sergeant at Arms*—John B. Barnes.

*Librarian*—Richard B. Holden.

*Doorkeeper*—John Hally.

*Messenger*—George Carrington.

*Assistant Messenger*—Stephen French.

*Under Doorkeeper*—Walter Irvine.

*Outer Doorkeeper*—John Brien.

*Assistant Doorkeeper and Messenger*—William Kelley.

*Fireman*—John Higgins.

---

---

**Public Officers--Departmental.**

*Attorney General*—Hon. F. B. T. Carter.

*Colonial Secretary*—Hon. E. D. Shea.

*Receiver General*—Hon. J. J. Rogerson.

F  
Duc  
G. T  
  
R  
lect  
Jan  
Can  
Wil  
Don  
Kea  
Cler  
Lan  
A  
  
F  
Wil  
Gra  
Gad  
Lan  
Pusi  
St. J  
Bra  
Pea  
John

*Solicitor General*—Hon. W. V. Whiteway.  
*Surveyor General*—John H. Warren.  
*Chairman Board of Works*—Charles Duder.

**Colonial Secretary's Office.**

*Colonial Secretary*—Hon. E. D. Shea.  
*First Clerk*—Joseph Crowdy.  
*Second Clerk*—John W. Withers.  
*Office Keeper and Messenger*—James Dunphy.

**Financial Secretary's Office.**

*Financial Secretary*—Hon. W. J. S. Donnelly.  
*Clerk*—Alexander S. Reid.

**Stipendiary Poor Commissicner.**

*Commissioner*—John Casey.  
*Clerk*—James Dunphy.

**Revenue Department.**

BOARD OF REVENUE.

*President*—Hon. James J. Rogerson, Receiver General; Edwin Duder, Hon. Robert Thorburn, Hon. Stephen Rendell, Hon. P. G. Tessier and Walter B. Grieve.

REVENUE ESTABLISHMENT.

Receiver General—Hon. James J. Rogerson. Assistant Collector, James S. Hayward, Esq. Landing and Tide Surveyor, James L. Noonan. Landing Waiters, James Winter and W. S. Canning. Third Landing Waiter and Assistant Tide Surveyor, William White. First Clerk and Warehouse Keeper, William Doutney. Second Clerk—William Gill. Third Clerk—John R. Kearney. Fourth Clerk and Locker, Patrick Furlong. Fifth Clerk, John R. Noonan. Lockers, Richard Meagher and Richard Lannery.

Authorized Broker, Henry J. Stabb.

OUTPORT SUB-COLLECTORS.

Fogo, John G. Lucas. Greenspond, William Lang. Trinity, William S. Green. Carbonear, Felix J. McCarthy. Harbor Grace, Alexander Clift; Clerk and Landing Waiter, Thomas W. Gaden. Brigus, George Gushue. Burin, Thomas Winter.—Lamaline, Henry Benning. Harbor Breton, Philip Hubert. Pushthrough, (Fortune Bay) Henry Camp. English Harbor, St. Jacques and Belloram, Geo. T. Smelgrove. Gaultois, Richard Bradshaw. LaPoile, Francis A. Reid. Twillingate, Joseph J. Pearce. Oderin, Richard McGrath. Channel, (Port-aux-Basque) John Evans.

J. W. COLLIER keeps the best Stock of Bordering and Moulding, 6, Victoria Street.

PREVENTIVE OFFICERS.

Bonavista and Catalina, John Miffen. Bay Bulls, J. Williams. Ferryland, William S. Carter. St Marys, James Harney.— Little Placentia, Thomas Freeman. Bay Roberts, G. W. R. Hierlihy. Hunt Harbor, Robert Belben. Bungeo, F. A. Parsons. Great Placentia, William G. Bradshaw. Grand Bank, (Fortune Bay) George Simms. Trepassey, Augustus Simms. Round Harbor, Bett's Cove and Tilt Cove, John Duder. Rose Blanche, John Furneaux. St. Lawrence, Hugh Vavasar.— Renew's, Michael Jackman. Hearts Content, James Gardner. Fortune, James P. Snook.

CUSTOMS DEPARTMENT.

Comptroller of Customs and Registrar of Shipping for Newfoundland and its Dependencies, Hon. James J. Rogerson. Surveyors of Shipping, W. White, St. John's. Alexander Clift, Harbor Grace. W. S. Green, Trinity. G. T. Snelgrove, English Harbor. David Murphy, Cape Bonavista to Salvage. William Lang, Salvage to Cape Freels. Geo. Simms, Grand Bank and Fortune. John Miffen, Catalina to Ragged Harbor. Joseph J. Pierce, Twillingate to Change Islands. ———, Tilt Cove. John Furneaux, Rose Blanche. Felix J. McCarthy, Carbonear.

TREASURY DEPARTMENT.

Receiver General, Hon. James J. Rogerson. Clerk, George F. Hayward.

LABRADOR—*Collection of Duties under Consolidated Statutes*—Collector, M. T. Knight. Sub-Collector, Blanc Sablon, Labrador, M. W. Stephenson.

Superintendent of Mercantile Marine, Robert Carter.

**Surveyor General's Department.**

Surveyor General, John H. Warren.

First Clerk and Draughtsman, William M. H. Warren.

Second Clerk and Topographical Surveyor, Thomas Long.

Assistant Clerk and Chainman, Carteret Alsop.

DEPUTY SURVEYORS IN OUTPORTS.

*Northern District*—Gilbert H. Cole, Trinity. Charles E. Thomson, Bonavista. Daniel Murphy, Kings Cove. Robert Strathie, Musgrave Town. John T. Oakley, Greenspond. Henry Miles, Open Hall. Thomas Peyton, Twillingate. ———, North Shore Notre Dame Bay. William Casey, Carbonear. G. W. R. Hierlihy, Bay Roberts. John Herne, Brigus. W. Christian, Trinity Bay South. Moses Tilly, Random Sound. Pierce Harrahan, North Shore Conception Bay. George Carter, South Shore Conception Bay.

*Southern Division*—John W. English, St. Mary's. Henry Camp, Fortune. Philip Hubert, Fortune Bay. ———, Burin. ———, Grand Bank. Michael Kelly, Cape Broyle. Theodor Driscoll, Bay Bulls.

### Board of Works Department.

Having the management and superintendence of Government House, Colonial Building, Court Houses, Gaols, Custom Houses, Hospitals, Lunatic Asylum, and all other Buildings and Property belonging to the Colony; Light Houses, Buoys and Beacons, erected or to be erected, within the Colony and its Dependencies; supervision of Commissioners of Roads, Highways, Bridges, &c.

#### BOARD OF WORKS.

Chairman, Charles Duder; Hon. W. V. Whiteway, William Boyd, Hon. R. Kent and Gilbert Browning.

Secretary, John Stuart.

Accountant, J. O. Fraser.

Clerk, P. M. Barron.

Superintendent of Public Works and Buildings, and Inspector of Light Houses, John T. Nevill.

Clerk, Robert Reader.

Road Surveyors and Inspectors, D. Brien and J. Kavanagh.

#### OUTPORT BOARDS OF ROAD COMMISSIONERS.

*Harbor Grace proper*—Robert Walsh, Charles Ross, Patrick Devereux, William Tapp, John Patterson, Mark Parsons and James Hippisley.

*South-side Harbor Grace and Bryant's Cove*—John Noel, William Webber, John S. Stephenson, (Bryants Cove) P. K. Norcott and Moses Parsons.

*Spaniard's Bay*—Moses Gosse, William Baggs, William H. Earle, Robert Gosse and Thomas Whelan.

*Upper Island Cove and Bishop's Cove*—John Crane, Israel Gosse, Nathaniel Barrett, Joseph Drover and Eliel Drover.

*Carbonear*—Nicholas Nichole, Benjamin J. F. Gould, Ambrose Forward, Michael Gould, Michael Dwyer, Felix J. McCarthy, Dr. John Ryall.

*Bay Roberts*—Isaac Bartlett, Stephen Parsons, Charles French, James Culleton, Mark Delaney, sr., E. Daw.

*Brigus*—George Smith, George Clarke, Noah Roberts, George Jerret, Stephen Dooling, William Walsh, William Antle, Thos. Spracklin, John Rabbits.

*Cupids*—Robert Pittman, James Ledrew, Alfred Smith, Thomas Ledrew, George Smith, Patrick Delaney, Michael Power, Samuel Spracklin, Wm. Wakeham, Isaac Richards, John Bishop.

*Port-de-Grave, Northern side of Northern Gut Bridge*—John M. Maddock, John Andrews, Isaac Richards, Thomas Butler, Geo. F. Payne, George Butler, William Brown, James Butler, Daniel King, Patrick Kenny, Henry Daw.

*Topsoil to Indian Pond, inclusive*—George Carter, Patrick Daily, John Hadson, R. Parmier.

*Indian Pond, exclusive, to Tar's Gut, inclusive*—Very Rev. J.

GRAINING and GILDING done in a superior style by J. W. COLLIER, & Victoria St.

O'Donnell, Charles Furey, M. Woodford, (Harbor Main) John Veitch, (Holy Rood) James Moore and James Wade (Cats Cove.)

*First Division, Freshwater to Perry's Cove, inclusive*—Jos. Joyce, John Smain, Thomas Rose, George Everley and Francis Pike.

*Second Division, Spout Cove to Ochrepit, inclusive*—John C. Moores, James Thistle, James Crowley, Alfred James, Pierce Hanrahan, John Diamond and Archelaus Halfyard.

*Third Division, Northern Bay to Caplin Cove, inclusive*—John Lewis, Simeon March, Jacob Moores, Joseph Whitshear, Edwin Turner, George Tuff and George Cull.

*Fourth Division, Bay-de-Ferds and Low Point*—Rev. G. S. Chamberlain, Henry Blundon, Charles Blundon, James Moores, Thos. Neil, Wm. Loquer and Wm. North.

*Grates Cove*—William Meadus, John Benson, Elijah Benson, Wm. H. Meadus and Joseph Snelgrove.

*Old Perlican*—Joseph Boyd, William Christian, Elias March, Jabez Strong, John Brown, (Lance Cove).

*Hants Harbor*—James H. Watson, John Sheehan, Richard Pelley, Charles Green, John Short, Robert Belbin, (Seal Cove) Moses Button, (Russels Cove).

*Heart's Content*—Rev. George Gardner, Richard Penny, Alex. Donnan, Alfred Hopkins, Reuben Bemister, (New Perlican) Simeon Avery, Jacob Hiscock, (Scully Cove) William Sooley and Samuel Humphries (Heart's Delight).

*New Harbor*—Moses Parsons, Thomas Newhook, Jacob Miller, Edward Moore, Albert George, (Dildo Cove) Wm. Hopkins and Charles Crocker (Green's Harbor).

*Random Sound, Shoal Harbor*—Moses Tilly, Aaron Tilly, (Shoal Harbor) Charles Ansford, (Deep Bight) Isaac Adey, (Lee Bight) Edmund Pilly, (George's Brook) Joseph Tilly, (Little Shoal Harbor) William Cooper (Magotty Cove).

*Random Sound, North West Arm, from Crow Head to the Bar*—Charles Reed, (Foster's Point) Job Pelly, (Robinson's Bight) James Reed, (March's Point) Wm. Gulliver, (Bald Nap) Moses Smith (Elliot Cove).

*Random Sound, South-west Arm, from Hearts Ease to Black Brook*—James Dover, (Hodge's Hole) Richard Seward, (Goosberry) James Pond, (Fox Harbor) Geo. Vardy, (Clay Pitts) Isaac Benson (Northern Bight) David Spurrel (Butter Cove).

*Random Sound, South-west Arm, from Black Brook to St. Jones*—Wm. Blundell, Hez. Blundell, (St. Jones) David Benson, Mat. Martin, (Northern Bight) Alfred Vey and Benjamin Prince (Long Bight).

*Random Sound, North-west Arm, from Coney Island to Cow Head*—Hez. Blundell, Chas. Bryant, Alfred Blundell, (Hickman's Harbor) Benj. Martin, James Vardy.

*Smith's Sound*—James P. King, (Deer Harbor) Thos. Mills, (English Thoroughfare) James Mills, (Thoroughfare) James Toope and Silas Loader (Ireland's Eye.)

*Smith's Sound, North side*—James Pittman, (Brickyard) John Cooper, Geo. Carbery, (Bergoynes Cove) Thomas Pelly, (Broad Cove) Robt. Stone, (Rocky Brook).

*Smith's Sound, South side, from Lower Lance Cove to Bar*—Rev. G. H. Harrington, Pierce Currie, David Currie, (Britannia Cove) Absolom Cooper, (Bluff Point) John Late, (Middle Lance Cove) Joseph Pittman, (Skinner Cove.)

*Trinity*—Rev. Benjamin Smith, G. H. Cole, Alexander Bremner, Robert White, William Pittman, Benjamin Miller, Fred. Gover, (Trouty) George Fleet, (Cuckold's Cove) Arthur Watts, (North Side) John Randle, (Ship Cove) Robert Lawlor, (North Side) Capt. E. M. Cookesley, W. S. Green.

*English Harbor and Salmon Cove*—J. S. Collis, Geo. Barnes, Wm. Penny, John Batston, Wm. Bugden, Sprague Freeman, John Goss, Jacob Pitcher, (Salmon Cove).

*Bird Island Cove*—Arthur Tilley, Charles Trass, Abednego Hobbs, Thomas Talley, Geo. Oldford.

*Catalina and Ragged Harbor*—Thos. Stone, Alex. Bremner, S. Jeans, David Rennie, Isaac Snelgrove, Thomas McCormack, Wm. Norman, Josiah Stone, (Little Catalina) Thos. Donovan, (Ragged Harbor).

*New and Old Bonaventure*—Capt. Field, Moses King, Robert Hobbs, (Cats Cove) Levi Short, (Old Bonaventure) Ed. Gardner, (British Harbor).

*Greenspond*—J. T. Oakley, sr., Fred. White, John J. Murphy, J. T. Oakley, jr., Geo. Allen, jr., J. Dominy, Robt. Whitemarch.

*Pool's Island*—Peter House, Job Davis, Wm. Knee, (Pool's Island) John Hefferton, (Swain's Island) John Hawe, Edward Bishop, (Pinchard's Island) Jacob Ridout, (Cape Freels).

*Brooklyn*—M. D. Stares, Wm. Stares, sr., Matthew Waugh, Francis Stares, John Handcock, jr., Wm. Blundon, Wm. Handcock, Jacob Taylor.

*Musgrave Town*—Robert Strathie, Thos. Greening, Thos. Saint, James Reader, sr., Joseph Greening, Thomas Holloway, John Oldford.

*Salvage*—Rev. H. M. Skinner, James Burden, Thos. Oldford, John Sheppard, (Barrow Harbor) John Samson, James Pike, (Flat Island) John Squires, James Brown, (Bishop's Harbor.)

*Bonavista*—David Candow, John G. Skelton, M.D., Jabez Saint, Samuel Rowsell, Charles E. Thompson, Alfred Vincent, Wm. Brown, Thomas Harris, Samuel Milten, John Swyers.

*Kings Cove*—Rev. W. Kirby, Rev. — Hanley, James Brown, Daniel Murphy, Samuel Brown, James Sullivan, John Coffin, John Moak, Simon Tobin, (Broad Cove).

*Open Hall and Tickle Cove*—Fred. Shears, Henry Miles, Wm. Barker, Wm. Quinton, Andrew Skiffington, John Taylor, James Long.

*Keels*—Robert Penny, James Penny, Samuel Coffin, James Eagan.

*Gooseberry Island*—Ambrose Jeans, Edward Sweetapple, Wm.

J. W. COLLIER keeps the best Stock of Bordering and Moulding, 6, Victoria Street.



Jacobs, Simon Wells, Joseph House, John Turner, Joseph Hayward.

*Indian Arm and Seal Cove*—John Prince, jr., John Prince, sr., (Seal Cove) Edward Hamby, Wm. Greening, (Indian Arm) Richard Taylor, (Head of Bay) Wm. Tilley, Joseph Brown, (Indian Arm) George Prince, (Seal Cove).

*Twillingate*—Thomas Peyton, John Spence, Wm. Cartis, Wm. Lethbridge, Francis Roberts, John Roberts, John E. Blandford, Geo. Minty.

*Fogo*—Dr. H. Findlater, James Fitzgerald, Robert Scott, Thos. Drover, Thos. Hodge.

*Seldom-Come-By*—Henry Penny, Patrick Foley, Jacob Rowe, Wm. Penny, Philip Newell.

*Cat Harbor (Twillingate and Fogo)*—Henry Robins, M. Davies, George Parsons, Matthew Gibbons, John Gudger, Richard Parsons, James Lynch.

*Loom Bay*—Joseph Roberts, Ebenezer Wheeler, Fred. Slade.

*Change Islands, Fogo*—Alfred Pike, Thomas N. Taylor, John Pilley, Wm. LeDrew, Thomas Tourivelle, Henry Scammell, Ed. Elliott.

*Indian Islands*—Samuel Penny, William Collins, Wm. Perry, John Bartlett.

*Bar'd Island and Joe Batt's Arm*—James Rolls, Joseph Camden, James Primer, Miles Burke, Thomas Dealy, Thos. Brown, Joseph Jacobs.

*Herring Neck*—Rev. Alfred Winsor, Richard Philpots, Esau Blandford, Henry Miles, John Squires, Thomas Dally, William Richmond.

*New Bonaventure*—Edward Gardner, James Toop, John Gardner, Joseph Miller, James Ivamy.

*Ward's Harbor to Jacket's Arm*—J. Campbell, (Little Bay Islands) John Rousell, (Ward's Harbor) James King, (King's Cove) Wm. Marshall, (Little Bay Islands) John B. Wills, James Norris, (Three Arms).

*North West Arm to Shoe Cove*—Frederick Thomas, Wm. Noble, Charles Collins, Joseph Mills, James Gray, Jacob Toms, James White.

*Tilton Harbor*—Rev. James Brown, Wm. Burke, J. Brine, Jno. Dwyer, Wm. Green.

*Moreton's Harbor and Tizzard's Harbor, including Black Islands*—Mark Osmond, Wm. Taylor, Charles Brett, Thomas French, Jas. Jones, Elijah Jennings, Wm. Osmond, Wm. Wheeler, (Tizzards Harbor).

*Burnt Island, Harpells*—Edward Downton, Thomas Butt, A. Mammel, James Winsor, Thomas Winsor, Matthew Dalton, Josiah Manuel.

*Fortuac Harbor*—Richard Hamilton, Michael Bryan, Michael Byrue, James Carroll, Samuel Gillespie, Wm. Carroll, (Indian Cove) James Lyver, (Waldron's Cove).

*Jackson's Arm to Head of Green Bay*—John Knight, J. Campbell, John Rowsell, John Wills, Joseph Mills.

*Shoe Cove to Nippers Harbor*—James Grey, John Stark, Wm. Noble, John Walshman.

*Leading Tickle*—Wm. Allcock, Uriah Martin, Noah Chippett.

*Cat Harbor to Rocky Bay*—John Wheeler, Robert Wellon, Jno. Bradley, Wm. Pardy, (Musgrave Harbor) Matthew Gibbons, (Cat Harbor) Robert Shelly, (Rocky Bay).

*Witless Bay and Baleen*—Very Rev. Dean Cleary, James Murphy, Thomas Driscoll, James Carey, Samuel Driscoll, Thomas Gatherall.

*Bay Bulls*—Wm. G. Williams, Rd. Mockler, C. Brien.

*Ferryland, Creplin Bay and Aquaforte*—Rev. M. A. Clancey, Ed. Hanrahan, John White, James Carter, Michael Kelly, Martin Devereux, (Ferryland) Patrick Power, Edward Kough, sr., Robt. Morry, (Caplin Bay) Peter Winsor, Michael Meagher, Henry Winsor, (Aquaforte).

*Renews and Fermeuse*—Michael Jackman, Andrew Shallow, J. Berrigan, (Renews) Michael Lawlor, (Broad Cove) Wm. Trainor, Thomas Fennelly, (Fermeuse).

*Cape Broyle and Brigus*— Winsor, M. Cashin, Tos. Carew, — Green, (Cape Broyle) Nicholas Power, John Badcock, (Brigus) Wm. Gregory.

*Trepassey*—Rev. T. Hennebury, Henry Curtis, Jas. Waddleton, George Devereux, Thomas Sutton.

*St. Kyran's*—Patrick Sullivan, Thos. Sullivan, Jno. Brown, Jno. Hennessey.

*Harbor Buffit*—Rev. John Kingwell, C. D. Chambers, James Miller, Thos. E. Collett, Thos. Hand, Patrick Murphy.

*Bean Harbor*—Rev. John Kingwell, Richard Radway, Joseph Smith.

*Oderia*—Rev. M. Morris, Richard McGrath, Philip Power, Andrew Murphy.

*Great Placentia*—Rev. Charles Irvine, Thos. O'Rielly, Stephen Power, P. Fitzpatrick, John Cosgrove.

*Little Placentia*—W. Phoran, A. Burke, Thos. Connors, Thos. Freeman, Patrick Murphy.

*Sound Island, Berren Island and vicinity*—A. Blackader, Philip Brown, James Collett.

*Branch and Distress*—Rev. James Whelan, Edward Conway, Richard Kareen, Peter Nash, Matthew Loneragan, T. Young.

*Salmonier (South)*—John Cormack, W. Curtis, Daniel Daly.

*Salmonier (North)*—Mat. Carew, Hector Fraser, A. Nowlan.

*St. Mary's*—Michael Whelan, Patrick Nowlan, Charles Ryan, Michael Fagan, Michael Mahony.

*Merascuen*—John Hennessey, Geo. Pittman, Patrick Ennis.

*Isle of Valen*—Henry W. LeMessurier, Martin Galton, John Leonard.

SHIPS PAINTING done at the shortest notice by J. W. COLLIER, 6, Victoria Street.

J. W. COLLIER keeps the best assortment of Bedroom, Hall and Room Paper.

*River-head, St. Mary's, to Mall Bay*—Wm. Christopher, Martin Rourke, Thos. Comerford.

*Paradise*—Wm. Brown, M. Brennan, John Pearson.

*North Harbor and John's Pond*—Patrick Bonia, Thomas Power, Patrick Ryan.

*Holyrood and Peter's River*—Wm. St. Croix, Mehl. Hollahan, M. Londregan.

*Burin*—Rev. Wm. Born, John Paul, Michael Gorman, James Inkpen, Samuel Bennett, John Marshall, Samuel Brenton.

*Lamaline*—John Collins, Thomas Haley, Robert Bonnel, John Fleming, Benj. Bonnel, Kyran Maddigan.

*Lawn*—James Walsh, Patrick Murphy, John Tarant.

*Grand Bank*—Edward Evans, Jonathan Snook, James Lake, Wm. Burfitt, Morgan Foote, G. R. Forsey, W. P. Lake.

*Harbor Breton*—Revds. W. K. White, Robt. Brennan, and T. Birkett, Philip Hubert, James Hardy, F. Luce, H. T. Holman, Dr. C. Fitzgerald, Francis Jean, (Jersey Harbor).

*Settlements outside Fortune Bay*—Rev. W. K. White, (Harbor Breton) T. Bulley, (Sagona) John Galton, (Brunett) Samuel Fiander, (Comb's Cove) John Rose, (Little Bay) G. Keepin, (Rencontre) Joseph Loader, (Harbor Mille) William Miles, (Bay L'Argent).

*Belloram*—Rev. J. Bishop, John Grandy, Thomas Rows, John Rowkey, Wm. Cluett.

*Garnish*—G. T. R. Snellgrove, Samuel Banfield, Joseph Grandy, T. Grandy, S. Grandy, George Bramfield, Thos. Grandy.

*St. Lawrence*—Rev. W. Doutney, Robert Pike, W. Fitzpatrick, R. Quirk, James Peeves.

*English Harbor*—Samuel Fiander, Dennis Burke, Wm. Yarn, G. T. R. Snellgrove.

*Gaultois*—Rev. F. Colley, John Lee, Richd. Bradshaw, H. Shepherd, Dr. E. Thompson, Edward C. Gallop.

*Rose Blanche*—Thos. Ridout, John Rolls, P. H. Sorsoliel, A. McKenzie, Samuel Bonnel.

*Burgeo*—Rev. John Cunningham, Dr. Hunt, Capt. Small, — Filiers, James P. LeGros.

*LaPoile*—Francis A. Read, Geo. Strickland, Wm. Stone, sr., Thos. J. DeBourcier, John Cox, Samuel Biliard, H. Jeffries.

*Burnt Island, Burgeo and LaPoile*—F. J. Tweedle, Nath. King, sr., George Pool, Robert Smurridge, Jeremiah Fudge, J. Small.

*Channel*—Frederick Cox, John Evans, John LeMoine, Nathan Smith, Wm. Bragg.

*Shore lying between Cape LaHune and Bonnie Bay, District of Burgeo and LaPoile*—Rev. E. Colley, Abm. G. Skinner, Mat. Lee, E. Symes, J. R. Walkius.

#### GAOLS.

*St. John's Penitentiary*—Governor, Capt. W. J. Coen. First Turnkey, J. Martin. Second Turnkey, John Fleet. Third Turn-

ke  
Br  
I  
I  
I  
L  
B  
T  
L  
B  
G  
St  
H  
Fe  
Me  
Reno  
Me  
Reno  
Res  
St.  
M.D.  
Cox  
Kee  
For  
first e  
Laute  
elevat  
placed  
in fav  
Cape  
discha  
vessel  
and l  
Moore  
St.  
sunset

key, Austin Lush. Fourth Turnkey or Gate Keeper, James Brine. Matron, Mrs. Brine. Surgeon, Charles Crowdy, M.D.

*Harbor Grace*—Gaoler, David Rogers. Surgeon, W. Allan, M.D.

*Trinity*—Gaoler, William Crocker.

*Ferryland*—Gaoler, George Geary.

*Placentia*—Gaoler, Samuel Collins.

*Burin*—Gaoler, John Murphy.

*Bonavista*—Gaoler, Michael Fennel.

*Twillingate and Fogo*—Gaoler, John McKay.

*Harbor Breton*—Gaoler, William Lorenzen.

*Brigus and Port-de-Grace*—Gaoler, Thomas Butler.

*Greenspond*—Gaoler, John Bridle.

## COURT HOUSES.

*St. John's*—Keeper, Lionel T. Chancey.

*Harbor Grace*—Keeper, David Rogers.

*Ferryland*—Keeper, George Geary.

## ST. JOHN'S HOSPITAL.

Medical Attendants—Charles Crowdy, M.D., and Charles H. Renouf, M.D. Matron, Miss Cowan. Keeper, John Prowse.

## ST. JOHN'S POOR HOUSE.

Medical Attendants—Charles Crowdy, M.D., and Charles H. Renouf, M.D. Keeper, Mrs. Downey.

## ST. JOHN'S LUNATIC ASYLUM.

Resident Physician—Henry H. Stabb, M.D.

## DISTRICT SURGEONS.

*St. John's*—Eastern Ward, Wm. C. Simms, M.D., Henry Shea, M.D. Western Ward, Fred. Bunting, M.D.

*Conception Bay*—Wm. Allan, M.D.

## COLONIAL BUILDING AND GROUNDS.

Keeper—Mrs. Born.

## LIGHT HOUSES, HARBOR LIGHTS, &amp;c.

*Fort Amherst Light, at the entrance of St. John's*—A light was first established at this station in 1813; in 1850 a new House, Lantern and apparatus were erected. The Light burns at an elevation of 114 feet, is produced by a double argand burner placed in the focus of an annular lens of the fourth order, and in favourable weather can be seen 16 nautical miles. When Cape Spear is enveloped in fog a heavy piece of ordnance is also discharged at this Fort every hour during daylight, to assist vessels in making the harbor. It is situated in lat.  $47^{\circ}33'54''$  N. and long.  $52^{\circ}40'18''$  W. John Sheppard, Keeper; Thomas Moore, Assistant.

*St. John's*—Two red lights are exhibited every night from sunset until sunrise, intended as leading marks for vessels enter-

Mixed Paints, Glass, Putty, Oil and Turpentine, always on hand by J. W. COLLIER.

ing the narrows. The lower Light on the roof of the Custom House—the other 400 yards in the rear, on a white post, within a few yards of the N.E. angle of the Congregational Church, and 180 feet above the level of the sea. These Lights will be readily distinguished from any other Lights in the town; and keeping them in a line bearing N.W.  $\frac{3}{4}$  W., will lead in the largest vessel clear of all danger. To serve as leading marks also during the day, the pediment of the Custom House has been painted white; this is to be kept in line with the upper lantern, also painted white. Exhibited 1st September, 1863.

*Cape Spear Light*—This Light was first exhibited on the first September, 1835; it is produced by seven argand burners and silvered reflectors burning at an elevation of 264 feet—it revolves, shewing a bright Light every minute, and in favorable weather can be seen 26 nautical miles. It is situated in  $47^{\circ}.31'.11''$  N. Lat., and  $52^{\circ}.36'.51''$  W. Longitude. James Cantwell, Keeper; Dennis Cantwell, Assistant.

*Cape Bonavista Light*—Situate in lat.  $48^{\circ}.41'.56''$  N., long.  $53^{\circ}.5' 20''$  W.; is a revolving Light, showing alternately every 90 seconds a white and red Light. It is produced by 16 argand burners and reflectors, burns at an elevation above the sea of 150 feet, and in favorable weather can be seen 18 nautical miles. By keeping this Light open with Cape L'Argent, it will carry you clear of the Flower Rocks; first exhibited 11th September, 1843. Nicholas White, Keeper; Matthew White, Assistant.

*Cape Pine Light*—This tower is of iron, built by the Imperial Government in 1849-50, and first put into requisition on the 1st January, 1851. It is a fixed white Light, has 17 argand burners and reflectors—elevated above the level of the sea 314 feet—situated in lat.  $46^{\circ}.37'.4''$  N., and in long.  $53^{\circ}.31'.45''$  W. In a favorable state of the atmosphere it can be seen 26 nautical miles. George Hewett, Keeper; Wm. Costeloe, Assistant.

*Harbor Grace Beach Beacon and Light*—First exhibited 11th September, 1850; stands on the point of Beach at the entrance of Harbor Grace. Sailing into Harbor Grace with a fair or leading wind, bring the Beach Beacon to bear W. or W. by S., and by keeping the Light or Building a little on the starboard bow it will bring you clear of the Bar, on which at low water there is not more than 8 feet of water. It is situated in lat.  $47^{\circ}.41'.28''$  N., and in long.  $53^{\circ}.12'.33''$  W., elevation above the sea level 40 feet; in clear weather it may be seen at a distance of 11 nautical miles. George Brown, Keeper.

*Green Island Light at the entrance of Catalina Harbor, Trinity Bay*—Situate in lat.  $48^{\circ}.30'.16''$  N., long.  $53^{\circ}.2'.40''$  W. This is a fixed white light, burns at an elevation of 92 feet above high water, and in favorable weather will be seen from E.N.E. seaward, to S.W., 15 nautical miles. Vessels bound Northward by keeping this Light open with the North Head of Catalina until Bonavista Light opens with Cape Lefean, will give the Flower Rocks an ample berth—or when coming from the Northward and bound for Catalina, by giving the N. head a moderate berth, you will clear the Brandies Rocks by steering for Green Island

I  
P  
se  
by  
18  
se  
to  
ol  
lat  
18  
bec  
Ho  
stor  
in c  
we  
wea  
Eng  
D  
in r  
nigh  
the s  
nte,  
sea,  
47° C  
Shep  
Of  
Octo  
The  
Brid  
seen  
Situa  
Char  
Ba  
from  
dayli  
North  
tude  
dwell  
white  
Th  
white  
443 f  
nanti  
the a  
N.N.  
thru  
Keep  
Co  
Sept  
order

Light. It was first exhibited in 1857. Peter Woods, Keeper; Peter Martin, Assistant.

*Cape Race Light*—Exhibits a revolving white Light, from sunset to sunrise. The light will be visible to seaward from N.E. by E., round by the S.E. and S. to W. The Light is elevated 180 feet above the mean water level of the sea, and may be seen in clear weather 10 nautical miles from a ship's deck. The tower is striped red and white vertically. It stands close to the old Beacon, which has been cut down. The Light House is in lat.  $46^{\circ}39'30''$  N., long.  $55^{\circ}4'30''$  W., and was first exhibited in 1856. Michael J. Hally, Keeper; George Simms, Assistant.

*Cape Race Steam Fog Alarm*—A powerful Steam Whistle has been placed on Cape Race, about 250 feet south of the Light House, which is sounded during thick or foggy weather or snow storms, for ten seconds, with intervals of silence of fifty seconds, in each minute. The Whistle will probably be heard in calm weather 20 miles; with the wind 30 miles; and in stormy weather against the wind, from seven to ten miles. P. Myrick, Engineer.

*Dodding Head, Great Burin Island Light*—This Light was put in requisition on the 3rd August, 1858, and is exhibited every night from sunset to sunrise. It is revolving, catoptric of the second order, producing a brilliant White Light every minute, burning at an elevation of 430 feet above the level of the sea, and in favorable weather can be seen 20 miles—situated in  $47^{\circ}0'26''$  North Latitude,  $55^{\circ}8'43''$  West Longitude. Austin Sheppard, Acting Keeper; John Churchill, Assistant.

*Offer Wadham Island Light*—Was first exhibited on the 4th October, 1858, and is lighted every night from sunset to sunrise. The Light is a steady, fixed lens-light, burning on a circular Brick Tower, 100 feet above the level of the sea, and can be seen in a favorable state of the atmosphere 15 nautical miles. Situated in Latitude  $49^{\circ}30'0''$  North, Longitude  $53^{\circ}45'0''$  West. Charles Prowse, Keeper; Henry Waterman, Assistant.

*Baccalieu Island Light*—This Light is exhibited every night, from the going away of daylight in the evening to the return of daylight in the morning. The Light House, situated on the Northern end of the Island—Latitude  $48^{\circ}8'51''$  North, Longitude  $52^{\circ}47'50''$  West—the tower is of brick, the keeper's dwelling (a square building detached from the tower,) is painted white, with the roof red.

The light is a catoptric first class Holophotal revolving white Light, shewing a flash every twenty seconds. It is elevated 443 feet above high water, and can be seen in clear weather 30 nautical miles, and a lesser distance according to the state of the atmosphere. When the southern end of the Island bears N.N.E., the Light will not be visible when nearer the Island than 8 miles. It was first exhibited in 1853. John Ryan, Keeper; Michael Ryan, Assistant.

*Cape St. Mary's Light*—Was put into requisition on the 20th September, 1860; it is a revolving catoptric Light of the first order, producing alternately every minute a brilliant red and a

GRAINING and GILDING done in a superior style by J. W. Collier, 6, Victoria St.

white Light, burning at an elevation of 300 feet above the level of the sea, and will be seen in a favorable state of the atmosphere 26 nautical miles from a vessel's deck; situated in  $46^{\circ}.49'.30''$  N. lat.,  $54^{\circ}.11'.54''$  W. long. The tower is of brick, and on each side of which stands the dwellings of the keeper and assistant, the sides of which are painted white, roofs red. John Rielly, Keeper; Wm. J. Collins, Assistant.

*Brunel Island Light, Mercer's Head, Fortune Bay*—First exhibited 27th June, 1865. It is a powerful flashing white Light, and attains its greatest brilliancy every ten seconds. It burns at an elevation of 408 feet above the level of the sea, and in clear weather may be seen at a distance of 35 miles, and be visible in every direction from North round East and South, to W.N.W. Mercer's Head is a bold headland and situated in long.  $55^{\circ}.59'.30''$  W., and lat.  $47^{\circ}.16'$  N. Martin Sparrow, Keeper; Jas. Gaulton, Assistant.

*Harbor Grace Island Light*—The fixed Light for many years past exhibited at Harbor Grace Island, in Conception Bay, was discontinued on the 1st December, 1869. The Light at that station is now revolving, showing in every direction two white flashes, followed by one red flash. The interval between each flash in attaining its greatest brilliancy will be 30 seconds. This Light, in a favorable state of the atmosphere, will be seen 25 nautical miles. It is situated in lat.  $47^{\circ}.42'.45''$  N., and long.  $53^{\circ}.8'.15''$  W. Austin Oke, Keeper; P. Houlahan, Assistant.

*Ferryland Head Light*—First exhibited on the 1st October, 1871. From sunset to sunrise a steady white Light of the 3rd order, burning on a brick tower 200 feet above the level of the sea, visible in favorable weather 16 nautical miles. Ferryland Head Light is situated in lat.  $47^{\circ}.00'.58''$  N., and long.  $52^{\circ}.51'.07''$  W. The tower is of red brick; the keepers dwelling, detached from the tower, is painted white and the roof red. Michael Kearney, Keeper; Philip Kough, Assistant.

1872. *Puffin Island, Greenspond*—The Light House on this Island is built of granite. The tower and keepers dwelling are attached. The illuminating apparatus is dioptric, of the 4th order, and a *fixed red* Light is exhibited every night from sunset to sunrise; it is 85 feet above the level of the sea, and in clear weather should be seen a distance of 12 miles. The Light is visible from North by East, through South to West by North, by compass, and is situated in  $49^{\circ}.3'.37''$  North lat., and  $53^{\circ}.32'.27''$  West long. Fred. W. Oakley, Keeper.

No. 1, 1873. *Belloram, Fortune Bay*—A *fixed white* Light is exhibited nightly at this place, from sunset to sunrise, at an elevation of 35 feet above the level of the sea, and in clear weather should be visible seven miles. The building is a wooden tower, painted white, and is situated in lat.  $47^{\circ}.29'$  North, and  $55^{\circ}.27'.15''$  West long. The apparatus is dioptric, of the 8th order, with a single argand burner, and illuminates an arc of the horizon of  $270^{\circ}$ . In entering the harbor the light must be kept on the port hand. Samuel Clewett, sr., Keeper.

No. 2, 1873. *Rose Blanche Point*—This Light House is built of

granite, upon the eastern head. The tower and keepers dwelling are attached. The illuminating apparatus is dioptric, of the 4th order, and a *fixed white* Light will be exhibited from sunset to sunrise, at an elevation of 95 feet above the level of the sea, and it should be seen in clear weather for 13 miles. The light illuminates the horizon from East by South, through South to West, by compass, and is situated in lat.  $47^{\circ}35'.48''$  N., and  $58^{\circ}41'.30''$  W. long. Shag Island Black Rock bears West from the light and distant about one mile. Rose Blanche shoals W.S.W. half a mile, and Petites Black Rock E. by S. three miles. Keeper, John A. Roberts.

No. 3, 1873. *Port Point, Trinity*—On and after 1st January, 1874, a *fixed white* Light will be exhibited nightly, from sunset to sunrise, at this place, upon a wooden tower, painted white, and at a height of 75 feet above the level of the sea, and it should be visible in clear weather for 11 miles. The erection is situated in  $45^{\circ}21'.55''$  North lat., and  $56^{\circ}20'.51''$  West long. The apparatus is dioptric, of the 8th order, with a single argand burner, and illuminates an arc of the horizon of  $320^{\circ}$ .—In entering the harbor the light must be kept on the port hand. Keeper, Wm. Rowe.

No. 1, 1874. *Can Island, Seldom-come-By*—A *fixed white* Light is exhibited nightly at this place, from sunset to sunrise, at an elevation of 85 feet above the level of the sea, and should be visible 12 miles. The tower and dwelling are of wood and attached, and are situated in latitude  $46^{\circ}35'.05''$  N., and longitude  $54^{\circ}10'.33''$  W. The apparatus is dioptric, of the 8th order, with a single argand burner, and illuminates an arc of the horizon of  $327^{\circ}$ . John Hodnott, Keeper.

No. 2, 1874. *Boar Island, Burgeo*—A *fixed red* Light is exhibited nightly at this place, from sunset to sunrise, at an elevation of 240 feet above the sea, and should be visible 17 miles. The tower and dwelling are of wood and attached, and are situated in latitude  $47^{\circ}36'.12''$  N., and longitude  $57^{\circ}35'.13''$  W. The apparatus is dioptric, of the 6th order, with a single argand burner, and illuminates the whole of the horizon of  $270^{\circ}$ . Ed. Dicks, Keeper.

No. 1, 1875. *Channel Head, Port-au-Basques*—A wooden light tower has been erected on this head, and on and after this day a *fixed red* Light will be exhibited thereon, at an elevation of 80 feet above the level of the sea. Lat.  $47^{\circ}33'.47''$  N., and long.  $59^{\circ}07'.10''$  West. In clear weather the light should be visible twelve miles. The illuminating apparatus is dioptric, of the 8th order, with a single argand burner. The whole horizon is illuminated. Timothy Pike, Keeper.

*Rocky Point, Harbor Breton, Fortune Bay*—Situated in latitude  $47^{\circ}27'.36''$  N., longitude  $55^{\circ}47'.45''$  W. A square wooden tower, carrying an Octagon and Lantern, in which a white light will be exhibited nightly, with a red light to mark the Harbor Rock.—Wm. Lorenzen, Keeper.

*Garnish, Fortune Bay*—A Beacon Tower of wood, carrying an



Octagon and Lantern, in which a red light is exhibited nightly. Latitude  $47^{\circ}.14''$  N., longitude  $55^{\circ}.24'$  W. (approximate). John Grandy, Keeper.

*Beacon, Ireland Eye, entrance of LaFolle Bay*—A square building of wood, painted white, with three black bands, has been erected on this Island. It is 75 feet high and is supported on four chains.

No. 1, 1870. *Long Point, Twillingate (Toulinguet)*—First exhibited 1st September, 1870, from sunset to sunrise. Revolving white Light, visible in clear weather 27 nautical miles; 335 feet above sea level. Latitude  $45^{\circ}.41'6''$  N., long.  $54^{\circ}.49'.0''$  West. The light tower is painted red and the keepers dwelling (detached) is painted white and the roof red. Samuel Roberts, Keeper; Jas. H. Preston, Assistant.

J. T. Nevill, General Inspector Light-houses.

*Light Dues*—One shilling per ton on all vessels entering any port or harbor of the Colony, except coasting, sealing, or fishing vessels; but not to be levied more than once in one year. Sealing and coasting vessels—sixpence per ton on registered vessels of 40 tons and upwards; fifteen shillings per ton on all vessels less than 40 tons.

The 19th of Victoria, Cap. 5, Sec. 5, enacts,—“That no greater sum than £25 sterling shall be in any year levied for Light Dues on any steamer or vessel entering any port of this Colony; and no steamer plying between Europe and any port of North America, and entering any port of this Colony as a port of call, shall be liable to pay any Light Dues, or other port charges, except pilotage.”

*Gallantry Head, Island of St. Peter's*—The Fixed Light on Gallantry Head, (Island of St. Peter's) since the 10th August, 1862, has been replaced by a Flash Light, with intervals of twenty seconds, and by one red flash after two white flashes; situated in lat.  $46^{\circ}.45'.30''$  N., long.  $58^{\circ}.27'$  W.; elevation above high water, 64 metres, (204 English feet). Distance at which the light is visible, 18 miles. The light is hidden at the Northward by the high land of St. Peter's.

*Light at the South entrance of St. Peter's*—Since 1st October, 1862, the entrance of the harbor of St. Peter's, called South Channel, has been marked by two small fixed Lights, one of which is a white Light, illuminating three fourths of the horizon, and placed on the Battery—and the other a red Light, on the plain at the north of the town. The white Light has an elevation of 11 metres, and is visible 6 miles. The red Light is elevated 19 metres, visible 2 miles distant. The line connecting these two Lights indicates the Middle Channel.

The position of the red Light has also been so determined that as soon as it is seen on the left of Cape Eagle, vessels coming from Columbiar in beating into the N. E. entrance will have nothing to fear from the shoals of Cape Rouge.

*Light on the South West Point of the Island of Dogs, called Pointe*

*a Leconte*—Commencing on the 1st August, 1874, a Light will be exhibited on the South West Point of the Island of Dogs, at the place called Pointe a Leconte at 400 metres (437 English feet) above the level of the sea. It will be seen in clear weather 7 miles. The extent of the Light is circumscribed in a sector of 165° presenting two cones of Light, one white, of 40°, will light the passage of the S.E. so as to permit vessels which maintain a position within this cone to avoid at the right the shoal Bataille, and to the left the rock of Cape Noir and the rock Bertrand. The second cone will be red, of 123°. It should be avoided by vessels entering by the S.E. passage, and will enable them, when they shall have quitted the white cone, to come to anchor in the roadstead or in the Barachois, in following the line of the white light from Pointe aux Canoas, and of the red light from the interior of the city.

A Light House has been erected by the Government of Canada, on the Western side of Cape Ray, on the South-west coast of the Island of Newfoundland. Latitude 47° 37' N., long. 59° 18' W. A powerful flash White Light is exhibited, making a complete revolution in two and one quarter minutes, and flashing every ten seconds; at a long distance, however, it has the appearance of a steady light. The light can probably be seen at a distance of twenty miles in clear weather.

The Tower is a wooden building, hexagonal in shape, forty-one feet high, and painted white. The keepers dwelling, also of wood, stands at a little distance from the Tower, and is also painted white.

The illuminating apparatus is catoptric and consists of twelve lamps and reflectors.

A Fog Whistle is in operation at Cape Ray. It will be blown in thick and foggy weather and during snow storms, for ten seconds in each minute, leaving an interval of fifty seconds between each blast. It can be heard from 2 to 15 miles.

### Post Office Department.

Postmaster General—John Delaney, Esquire.

First Clerk and General Accountant—George LeMessurier.

Superintendent Money Order Office—Thomas S. Dwyer.

Second Clerk and Assorter—John Freeman.

Third Clerk and Assorter—George Gaden.

Letter Carriers and Messengers—John Higgins and John Power.

Office hours—From 9 a.m., to 4 p.m., Sundays excepted.

### POST MASTERS.

Harbor Grace, Andrew T. Drysdale; Carbonar, Nicholas Nicholle; Brigus, Sarah Stantaford, (Post Mistress); Trinity, Anne Cross, (Post Mistress); Bonavista, John Lawrence; Greenspond, William Lang; Pogo, James Fitzgerald; Twillingate, Jos. J. Pearce; Bay Bulls, H. J. Williams, (Post Mistress); Ferryland, John Morry; Placentia, Mrs. Hannah Bradshaw, (Post

SHIPS PAINTING done at the shortest notice by J. W. COLLIER, 6, Victoria Street.

Mistress); Rurin, Thomas Winter; Harbor Breton, Thomas Birkett; Burgeo, Francis A. Parsons; Little Placentia, Alex. Burke; New Perlican, Francis Howell; LaPoile, Thomas Read; Chamel, W. S. Green.

## WAY OFFICERS.

Port-de-Grave, Matthew O'Rielly; Bay Roberts, Eliza Moore, (Way Mistress); Blackhead, John Moore; King's Cove, Bernard Murphy; Old Perlican, William Christian; Portugal Cove, Mrs. Dooley, (Way Mistress); Exploits, T. Winter; Grates, Jas. Jeans; Brooklyn, (Goose Bay) E. Stares; Spaniards Bay, Wm. Petipas; St. Mary's, Patrick Walsh; Harbor Main, Mr. Ezekiel; Catalina, Wm. Coleridge; Odorin, James Murphy; Paradise, Patrick Healy; Salmonier, Matthew Carew; Hermitage, M. Frances; Carnish, George Snellgrove; Bay-de-Verds, Charles Bandon; Lamaline, James Pitman; Grand Bank, Jonathan Hickman; Fortune, H. J. Hindon; Holyrood, John Veitch; Topsail, James Moise; Hants Harbor, Wm. Hussen; Cats Cove, T. O'Brien; Island Cove, John Crane; Trepassey, E. Devereux; English Harbor, A. Stirling; New Harbor, T. Newhook; La-Manche, F. J. Kingwell; Freshwater, J. Pritchett; Salvage, T. Oldford; St. Lawrence, Hugh Vavasor; Rose Blanche, Philip Sorsoliel; Western Bay, Pierce Hamblan; Tilt Cove, L. N. Gill; Nippers Harbor, Frederick A. Thomas; Bonne Bay, John R. Roberts; Hearts Content, George Moore; Scilly Cove, Robt. Pittman; Herring Neck, Robert Lewis.

## POSTAL ROUTES.

Summer—Between St. John's and Portugal Cove, every day, except Sunday and Wednesday, by waggon.

Between Portugal Cove, Briggs, Harbor Grace and Carbonear, by steamer, tri-weekly; Bay Roberts, weekly. Overland, Topsail, Holyrood and Harbor Main, weekly.

Winter—Overland, by waggon, from Carbonear, via Topsail, Kelloggrews, Holyrood, Harbor Main, Briggs, Port-de-Grave, Bay Roberts, Spaniards Bay and Harbor Grace, four hours after the arrival of the steamer from Halifax.

Between Carbonear and Grates Cove, (calling at Heart's Content, New Perlican, Hants Harbor and Old Perlican), weekly, by messenger.

Between Carbonear, Blackhead and Bay-de-Verds, weekly, by messenger, calling at intermediate places.

Between New Perlican and Trinity, weekly, by boat.

Between Trinity and Bonavista, and between Trinity and King's Cove, weekly, by messenger.

Between Bonavista and Greenspond, fortnightly, by boat, touching at Salvage.

Between St. John's, Bay-de-Verds, Catalina, King's Cove, Trinity, Bonavista, Greenspond, Fogo, Twillingate, Exploits, Tilt Cove and Nippers Harbor, by coastal steamer, fortnightly, on the Thursday after the arrival of the steamer from Liverpool and Queenstown; and during winter months, Greenspond, over-

J. W. COLLIER keeps the bes assortment of Bedroom, Hall and Room Paper.

Jan  
Ch  
of  
I  
Pie  
nel  
win  
alte  
I  
Fer  
for  
\*  
sun  
E  
the  
for  
\*  
afte  
\*  
\*  
\*  
Buff  
\*  
Para  
\*  
\*  
Lan  
\*  
Har  
\*  
Burr  
Be  
desp  
Re  
duri  
Po  
mini  
Fo  
tiona  
Le  
cent's  
Ne  
2 cen  
Fo  
ports  
All  
State  
Edwa

land via Harbor Grace, Spaniard's Bay, New Harbor, Come-by-  
Chance, Random and Freshwater, on the Monday after arrival  
of Halifax steamer.

Between St. John's, Ferryland, Renewes, Trepassey, Burin, St.  
Pierre, Harbor Breton, Burgeo, LaPoule, Rose Blanche and Chan-  
nel, by coastal steamer, fortnightly in summer and monthly in  
winter; calling at Fernense and St. Mary's and Placentia every  
alternate trip.

Between St. John's, Bay Bulls, Witless Bay, Toads Cove and  
Ferryland, weekly, by waggon, during summer months, and  
fortnightly in winter.

\*Between Ferryland, Aquaforte and Renewes, fortnightly in  
summer and monthly in winter, by messenger.

Between, St. John's and Placentia, by waggon, on Friday, if  
the Halifax steamer is in: it nor the Mails will be despatched in  
for 2 hours after her arrival.

\*Between Placentia and St. John's, by waggon, in one hour  
after the arrival of the Packet Boat from Burin.

\*Between Salmonier and St. Mary's, by messenger.

\*Between Great and Little Placentia, by messenger.

\*Between Great Placentia, LaManche, Sound Island, Harbor  
Buffett, Red Island, Merasheen and Burgeo, by boat.

\*Between Great Placentia and Burin, by boat, touching at  
Paradise and Oderin.

\*Between Burin and Garnish, by messenger.

\*Between Burin, Corbon, Little and Great St. Lawrence,  
Lamaline, Fortune and Grand Bank, by messenger.

\*Between Garnish and Harbor Breton, calling at English  
Harbor, by boat.

\*Between Harbor Breton, Pushthrough, Rencontre, Rameo,  
Burnt Islands and Petites, by boat.

Besides the above mentioned routes, Mails are made up and  
despatched by steamer, after arrival of steamer from Halifax.

Routes marked thus \* are fortnightly in summer and monthly  
during winter.

Postage on Letters addressed to the United States, the Do-  
minion of Canada and England, are as follows:

For Letters under  $\frac{1}{2}$  oz., 5 cents, and 5 cents for every addi-  
tional  $\frac{1}{2}$  oz.

Letters for the British West Indies, 10 cents per  $\frac{1}{2}$  oz., and 10  
cents for every additional  $\frac{1}{2}$  oz.

Newspapers to United States, the Dominion and West Indies,  
2 cents, and to England, 1 cent.

Foreign Newspapers re-mailed for transmission to the Ont-  
ports, are charged 1 cent each, prepaid by stamp.

All correspondence addressed to the United Kingdom, United  
States, the Dominion, New Brunswick, Nova Scotia and Prince  
Edward's Island must be prepaid, or it cannot be forwarded.

Mixed Paints, Glass, Putty, Oil and Turpentine, always on hand by J. W. COLLIER.

Plain and Ornamental Sign Painting by J. W. COLLIER, 6, Victoria St., St. John's, Nfld.

THE NEWFOUNDLAND ALMANAC.

INLAND POSTAGE.

For Letters—Under 1/2 oz. . . . . 3 cents.  
Under 1 oz. . . . . 6 cents.  
3 cts. for every additional 1/2 oz., prepaid by stamps.

For book packets, pamphlets, magazines and periodicals, not exceeding three pounds in weight, transmitted by post within the Island are charged 5 cents for every quarter pound of their weight.

PARCEL POST.

Parcels closed at the ends and sides may be posted at any Post Office in Newfoundland for conveyance to any other Post Office (not Way Office) in the Island, at a rate of Postage subject to the following conditions:—

- 1—No letter or letters shall be concealed.
- 2—The parcel shall not contain any explosive substance, glass, liquid or other matter, likely to injure the ordinary contents of the mail, under penalty of forfeiture of the parcel.
- 3—The weight of the parcel should not exceed 3 lbs., nor the size exceed one foot in length, or breadth, or six inches in thickness.
- 4—Parcels must be prepaid at the following rates:  
Under 1/4 lb. . . . . 5 cents.  
Over 1/4 lb. and not exceeding 1/2 lb. . . . . 10 cents.  
Over 1/2 lb. and not exceeding 3/4 lb. . . . . 15 cents.  
And so on, adding 5 cents for every 1/4 lb., or fraction thereof.

5—The parcel may be registered on payment of a fee of five cents in addition to the postage.

6—If the name and address of the sender be written on the parcel, it will, if delivery should fail from any cause, be returned unopened to the sender, on payment of an additional rate of 20 cents for the return conveyance.

7—The parcel should have the words "by Parcel Post," plainly written over the address. It should be well and strongly put up, and be legibly addressed to the Post Office address of the intended receiver, including the name of the district in which the Post Office is situated. The following is an example of the mode of address recommended:

BY PARCEL POST.

To \_\_\_\_\_  
 \_\_\_\_\_ Post Office  
 District of \_\_\_\_\_  
 Sent by \_\_\_\_\_  
 District of \_\_\_\_\_

PROHIBITORY CLAUSES.

No written communication shall be enclosed in any circular, periodical, pamphlet, book, book parcel, or parcel for the Parcel

GRAINING and GILDING done in a superior style by J. W. Collier, 6, Victoria St.

Post; and no communication shall be written upon any circular, periodical, pamphlet, book, book package or parcel.

No letter, or any writing, or any marks to serve the purpose of a letter, shall be written upon or enclosed in any new paper posted to pass as a newspaper.

Prepaid books, pamphlets and magazines for Great Britain, are charged the following rates, when exceeding two ounces in weight:

For a packet above two ozs. and not exceeding 4 ozs., 6 cents.  
 not exceeding 8 ozs., 12 cents.  
 over 8 ozs. and not exceeding 1 lb., 24 cents,  
 and so on, adding 6 cents for every additional 4 ozs., or fraction thereof, when the packet exceeds two ounces in weight.

Books, trade patterns, or samples, and all printed papers, other than newspapers, not exceeding *two ounces in weight*, are forwarded to the United Kingdom at the reduced rate of:

For a packet not exceeding 1 oz. . . . . 2 cents.  
 Above 1 oz. and not exceeding 2 ozs. . . . . 4 cents.

Unpaid Books for the United Kingdom are forwarded, charged with double the prepaid rates of postage.

Letters for officers serving in H. M. service abroad are chargeable with the ordinary rates of postage.

*Rates of Postage on Letters posted in Newfoundland for the following Countries and places.*

United Kingdom, Dominion of Canada and the United States, 5 cents per  $\frac{1}{2}$  oz. rate.

France, Spain, Portugal, Italy, Holland, Belgium, Germany, Switzerland, Russia, Denmark, Sweden, Norway, Malta, Gibraltar, Ionian Islands, Greece, Larnica, Mitelene, Azores, Algeria, Turkey and Egypt, Bermuda and West Indies, 10 cents per  $\frac{1}{2}$  ounce rate.

Tunis, 12 cents per  $\frac{1}{2}$  oz. rate.

Adca, Africa, (South and West) Ascension, Australian Colonies, Bourbon, Cape de Verds, Cayenne, Falkland Islands, Fernando Po, Gambia, Gold Coast, Gaudaloupe, India, (via Southampton) Liberia, Martinique, Reunion, St. Helena, Sierra Leone, 17 cents per  $\frac{1}{2}$  oz. rate.

Mauritius, 18 cents per  $\frac{1}{2}$  oz. rate.

Ceylon, 23 cents per  $\frac{1}{2}$  oz. rate.

Brazil, 25 cents per  $\frac{1}{2}$  oz. rate.

Borneo, Buenos Ayres, China, Costa Rica, Grey Town, Guatemala, Hayti, Hong Kong, Labuan, Mexico, Monte Video, Penang, United States of Columbia, (New Grenada) 29 cents per  $\frac{1}{2}$  oz. rate.

As the postal rates for Foreign countries are often changed, it would be well to inquire at the Post Office if the amount of Stamps on Letters is sufficient to prepay to destination.

Letters sent via Brindisi are charged 4 cents additional per  $\frac{1}{2}$  ounce rate.

None but first class Workmen employed by J. W. Collier and satisfaction warranted.

Per Packet, via Halifax, Bermuda, 10 cents; United States, Dominion of Canada, Prince Edward's Island, 5 cents, and West Indies, 10 cents per  $\frac{1}{2}$  oz.

*Rule of Rating Letters by British Packet.*

For all countries, under  $\frac{1}{2}$  oz. one rate; under 1 oz., two rates; under  $1\frac{1}{2}$  oz. three rates, and so on, adding one rate for every  $\frac{1}{2}$  oz.

Letters posted in Newfoundland for delivery at any place within the Island, are charged 3 cents for every  $\frac{1}{2}$  oz., if prepaid, and 6 cents unpaid.

By the Act 28 Vic., Chap. 2, all letters sent from this Colony, and all local letters deposited in any Post Office in this Colony for delivery or transmission within it, shall be prepaid by stamps, or otherwise such letters shall be chargeable with double postage to the receiver.

Parties desirous of vending Newfoundland Postage Stamps, will be allowed a commission of five per cent. Stamps in all cases to be paid for in advance.

REGISTRATION.

Any Letters found to contain Coin, as well as any having the word "Registered" written upon them, which may be posted in Newfoundland, will be forwarded, charged with a double registration fee.

MONEY ORDER BRANCH.

Thomas S. Dwyer, Superintendent.

Office hours—From 9 a.m. to 4 p.m.

Money Orders are now interchanged with the United Kingdom, Dominion of Canada, P. E. Island and the United States, at the following rates of commission:

*Scale for United Kingdom*—Orders up to £2 stg., 1s. stg.; from £2 up to £5, 2s.; from £5 up to £7, 3s.; from £7 up to £10, 4s.

*Scale for the Provinces*—Orders up to £5, 1s.; from £5 to £10, 2s.; from £10 to £15, 3s.; and from £15 to £20, 4s. No single Order can be granted for more than £20. No half-pence to be introduced in the Orders.

Business of Money Order Office closes one hour before closing the Mails by the Halifax Steamer.

SYSTEM.

1—Money Orders are made out in forms supplied for the use of the Money Order Offices.

2—Persons applying for Money Orders are recommended to use printed "Application Forms," printed for that purpose.

3—Place of payment of a Money Order may be changed in accordance with instructions provided therefor.

4—Alteration of payee's name may be effected by issue of a new Order and payment of commission thereon.

5—Applicants for Money Orders are expected to observe due care in the examination of the same, relative to filling and stamping: defect in Orders, when presented for payment, may

cause difficulty and delay, for which the paying office is not to be held accountable.

6—Postmasters should be particularly careful to obtain from the person who presents a Money Order, whether the rightful owner or not, full information as to the Christian name, surname and address of the party who originally obtained it, unless such party be a firm, when the name of the firm will suffice. *The only exception to this rule is*—When an Order is presented through the Bank, in which case it will suffice that the Order, being properly signed, be also crossed with the Banker's name.

7—As however, *after once paying a Money Order, by whomsoever presented, the office will not be liable to any further claim*, the public are strictly cautioned,—

1st—To take all means to prevent the loss of the Money Order.

2nd—To be careful on taking out an Order, to state correctly the Christian as well as the surname of the person in whose favor it is drawn.

3rd—To see that the name of the person taking out the Money Order is correctly known to the person in whose favor it is drawn.

8—Payment of a Money Order must be obtained before the end of the sixth calendar month after that in which it was issued, otherwise, a new Order will be necessary, for which a second commission will be charged; and if the Order be not paid before the twelfth calendar month after that in which it was issued, all claims to the money will be lost.

Neglect of the foregoing instructions will risk the loss of the money, besides leading to delay and trouble in obtaining payment.

The Money Order Offices are:—General Post Office, St. John's; Post Offices at Bay Bulls, Bonavista, Brigus, Burgeo, Burin, Chunnel, Carbonear, Ferryland, Fogo, Greenspond, Harbor Breton, Harbor Grace, Placentia, Trepassy, Trinity, Twillingate.

9—Postmasters should recommend the use of Money Orders for the transmission of money, in preference to such transmission otherwise.

### Suggestions to the Public.

Facility will be given to the Post Office in the discharge of its daily duties, and greater security afforded to the Public, by careful attention to the following recommendations:

Post all Letters and Newspapers, &c., as early as practicable, especially when sent in large numbers.

When a number of Newspapers are addressed to the same office, put them up in one parcel.

When a number of circulars are posted, tie them up in a bundle, with the addresses all in one direction.

Address letters, papers, &c., in a legible and complete manner, always giving the name of the Post Office; and if there be more than one Post Office of that name, the name of the district in which situated. In case of letters going abroad, the name of



the country, as well as of the town and city, should be given in full. Letters, for example, intended for London, England, if simply addressed "London" would be forwarded to London, Canada West, and thus be delayed.

Letters, Papers or Parcels for Outports should have the name of the District, the Post or Way Office, distinctly written as part of the address. For instance, Letters for Bonne Bay, French Shore, are sometimes sent to Bonne Bay, Fortune Bay District, being simply directed Bonne Bay—there are several settlements named Broad Cove, Little Bay, English Harbor, Blackhead, Bulline, Caplin Cove, Deer Island, Flat Islands, Fortune, Fox Cove, Freshwater, Island Cove, Long Harbor, Burgeo, New Harbor, Salmon Cove, Seal Cove, Ship Cove, and unless properly directed, are liable to go to wrong office for delivery. The loss and inconvenience arising from imperfect directions, is caused by the carelessness of the sender, and no blame can attach to the Post Office—other places beside those named, have settlements with corresponding appellation, hence the necessity of being particular in addressing all letters, &c.

See that every letter, newspaper, or other packet sent by post, is securely folded and sealed. Every such packet has to be several times handled; and even when in the mail bag, is exposed to pressure and friction. Unless, therefore, the article be light and pliant, it should be enclosed in strong paper, linen, parchment, or some other material which will not readily tear or break.

Fasten the covers of newspapers firmly, so as to prevent them from slipping out.

When dropping a letter or newspaper into a letter box, always see that the packet falls into the box, and does not stick in its passage.

Never seal letters for the East and West Indies and other hot climates, with wax. Such a practice is attended with much inconvenience, and frequently with serious injury, in consequence of the melting of the wax, and the adhesion of the letters to each other. In all such cases use wafers or gum, and advise your correspondents in the country referred to, to do the same.

Never send money or other articles of value through the Post Office, except either by means of a money order, or in a registered letter. "Any person who sends money or jewellery in an unregistered letter, not only runs the risk of losing his property, but exposes to temptation every one through whose hands his letter passes, and may be the means of ultimately bringing some clerk or letter carrier to moral ruin." Carefully secure every letter or packet containing money or value, first with gum and afterwards with good sealing wax, on which mark the clear impression of the seal.

On posting a registered letter or packet, always obtain a receipt for the same at the office where posted.

When letters or newspapers are delayed or missing, at once communicate the fact to the Postmaster of the Division in which is situated the Post Office at which the delayed or missing letters were posted. In case of a missing letter enclose value, state the exact contents, the exact address, and the office at which posted :

the name of the person by whom posted, and the name of the person by whom received at the office. In the case of a delayed letter or paper, send the cover or wrapper in an entire state, in order that the place of delay may be ascertained by an examination of the post marks.

Trouble and loss occasionally arise out of the carelessness or dishonesty of parties employed in the Post Office service; yet instances are not wanting in which it has been shown to the satisfaction even of the complainants, that the fault at first attributed to the Post Office, in truth rested in other quarters. Theft by private hands, although very difficult of proof, have not unfrequently been brought to light; and it is greatly to be desired that those who suffer loss should, in the first instance, and while the circumstances are fresh, endeavor to ascertain with the utmost precision all particulars respecting the despatch or receipt of the lost letters or papers, and lose no time in communicating this information to the Postmaster. Indeed, generally speaking, it is only by careful inquiry into minute details that the offender can be detected, whether he be a servant of a department or not.

The Post Office is a department which admits of constant improvement and expansion. The public, by sending to the Postmaster General, clear and correct information respecting faulty arrangements, may materially benefit the service. It must be remembered, however, that changes in machinery so extensive and intricate as that of the Post Office, must be made cautiously and with much previous consideration.

Time is generally required to carry out any material change in postal arrangements; for even when decided upon, old contracts, requiring notice of termination, may have to be got rid of, and tenders of new contracts invited by public advertisements, before the decision can take effect.

New Post Offices are established by the Department wherever it is ascertained that a sufficient number of inhabitants can be accommodated, and a sufficient amount of postal revenue collected to warrant such a measure. When a new Post Office is required, a petition should be addressed to the Postmaster General, signed by as many of the inhabitants as can conveniently subscribe the same. The petition should state the name of the settlement and district in which it is desired the office should be established; the distance from the neighboring offices; whether at the sight of the proposed Post Office there is a village; the number of mills, stores, taverns, and houses thereat; the extent of the settlement to be served and the probable cost of the mail; together with any other facts which may form any ground for the accommodation applied for.

SHIPS PAINTING done at the shortest notice by J. W. COLLIER, 6, Victoria Street.

**Post Office Directory for Newfoundland,**

CONTAINING

*An Alphabetical List of the Towns, Villages and Settlements in the Colony, with the Post Towns and Way Offices.*

POST TOWNS—those marked thus \* are Money Order Offices.

NAME OF OFFICE.	DISTRICT.	NAME OF OFFICER.
*Brigus	Port-de-Gravo	Mrs. Stantafor
*Bonavista	Bonavista	John Lawrence
*Burin	Burin	Thomas Winter
*Burgeo	Burgeo and LaPoile	F. A. Parsons
*Bay Bulls	Ferryland	H. J. Williams
*Carbonear	Carbonear	Nicholas Nicholle
*Fogo	Fogo and Twillingate	James Fitzgerald
Ferryland	Ferryland	John Morry
*Greenspond	Bonavista	William Lang
*Harbor Grace	Harbor Grace	Andrew Drysdale
*Harbor Breton	Fortune Bay	Thomas Birkett
Little Placentia	Placentia and St. Mary's	Alexander Burke
*Placentia	Placentia and St. Mary's	Mrs. H. Bradshaw
*Twillingate	Fogo and Twillingate	Joseph J. Pierce
*Trinity	Trinity	Anne Cross
New Pelican	Trinity	Francis Howell
LaPoile	Burgeo and LaPoile	Francis Read
*Channell	Burgeo and LaPoile	N. J. Smith

**Way Offices.**

NAME OF OFFICE.	DISTRICT.	WAY OFFICE KEEPER.
Bay Roberts	Port-de-Gravo	Eliza Moore
Barenced	Brigus	J. Payne
Black Head	Bay-de-Verds	J. C. Moors
Bay-de-Verds	Bay-de-Verds	Charles Blundon
Bett's Cove	Twillingate	E. M. McCurdy
Catalina	Trinity	S. Jeans
Cats Cove	Harbor Main	Thomas O'Brien
Clarks Beach	Brigus	—
Cat Harbor	Twillingate	H. Robinson
Northern Bay	Bay-de-Verds	J. Hogan
Pouch Cove	St. John's East	J. Easterbrook
Sound Island	Placentia and St. Mary's	P. Brown
Cod Roy	French Shore, West	—
. Branch	Placentia and St. Mary's	J. English
Come-by-Chance	Placentia Bay	A. Baackadar
English Harbor	Fortune Bay	—
. Fortune	Burin	H. J. Haddon
Freshwater	Bonavista Bay	J. Pritchett

NA  
 Gr  
 Ga  
 Gr  
 Ha  
 He  
 Ha  
 Ho  
 Isla  
 Jac  
 Kin  
 Lar  
 LaM  
 Mus  
 New  
 Ode  
 Old  
 Para  
 Port  
 Port  
 Ran  
 Rend  
 Salu  
 St. M  
 Tops  
 Toad  
 Trep  
 Wes  
 Salva  
 Sout  
 St. L  
 Rose  
 Rene  
 Rend  
 Tilt  
 Torba  
 Nippe  
 Exple  
 Grate  
 Georg  
 Bay  
 Brool  
 (Goos  
 Spani  
 Bonne  
 Heart  
 Scilly  
 Herri  
 Burnt  
 Goose  
 Fortu  
 Fermo

NAME OF OFFICE.	DISTRICT.	WAY OFFICE KEEPER.
Grand Bank	Burin	Jonath'n Hickman
Garnish	Burin	George Snelgrove
Greens Harbor	Trinity	Simeon Read
Harbor Main	Harbor Main	Mrs. Ezekiel
Hermitage	Fortune Bay	M. Frances
Hants Harbor	Trinity	Mary Hussen
Holyrood	Harbor Main	John Veitch
Island Cove	Harbor Grace	John Crane
Jacksens Cove	Twillingate	Henry Knight
Kings Cove	Bonavista	Patrick Murphy
Lamaline	Burin	James Pittman
LaManche	Placentia and St. Mary's	T. J. Kingwell
Musgrave Harbor	Bonavista	J. B. Wheeler
New Harbor	Trinity	Thomas Newhook
Oderin	Placentia and St. Mary's	James Murphy
Old Perlican	Trinity	William Christian
Paradise	Placentia and St. Mary's	Patrick Healy
Port-de-Grave	Port-de-Grave	Matthew O'Rielly
Portugal Cove	St. John's East	Margaret Dooley
Random	Trinity Bay	J. Tilley
Rencontre	Fortune Bay	Joseph Earle
Salmonier, North	St. Mary's and Placentia	Matthew Carew
St. Mary's	Placentia and St. Mary's	Patrick Walsh
Topsail	Harbor Main	James Moise
Toads Cove	Bay Bulls	Mrs. Driscoll
Trepassey	St. Mary's	Eliz. Devereux
Western Bay	Bay-de-Verds	Pierce Hanrahan
Salvage	Bonavista	Thomas Oldford
South Side	St. John's	George Read
St. Lawrence	Burin	Hugh Vavasor
Rose Blanche	Burgeo and LaPoile	P. Sorsoliel
Renews	Ferryland	M. Leary
Rendell Harbor	Trinity	L. Hiscock
Tilt Cove	Fogo and Twillingate	L. N. Gill
Torbay	St. John's East	John M'Guire
Nippers Harbor	Fogo and Twillingate	F. A. Thomas
Exploits	Fogo and Twillingate	Thomas Winsor
Grates Cove	Bay-de-Verds	Wm. Meadus
Georges Bay	French Shore, West	Joseph LeGrande
Bay of Islands	French Shore, West	Wm. Petipas
Brooklyn	Bonavista	D. Stares
(Goose Bay)		
Spaniards Bay	Harbor Grace	William Earle
Bonne Bay	French Shore, West	J. R. Roberts
Hearts Content	Trinity	George Moore
Scilly Cove	Trinity	James Hiscock
Herring Heck	Twillingate	Robert Lewis
Burnt Island	Burgeo and LaPoile	Geo. Tweedle
Gooseberry Island	Bonavista	Thomas Harris
Fortune Harbor	Twillingate	R. M. Hamilton
Permeuse	Ferryland	Ann Collett

Mixed Paints, Glass, Putty, Oil and Turpentine, always on hand by J. W. COLLIER.



GRAINING and GILDING done in a superior style by J. W. Collier, 6, Victoria St.

NAME OF PLACES.	DISTRICTS.	POST TOWNS.
Bennett's Island	Bonavista	Greenspond
Bayly's Cove	do	do
Bermoth Island	do	do
Bloody Arm	Fogo	Fogo
Beaver Cove	do	Tilt Cove
Bard Islands	do	Fogo
Blackhead Cove	do	do
Black Island	do	Exploits
Burnt Bay	do	do
Birchy Bay	do	do
Bet's Cove	do	Fogo
Bay Bulls	Ferryland	Bay Bulls
Burnt Cove	do	do
Bolline (South)	do	do
Briggs (South)	do	Ferryland
Biscay Bay	Placentia and St. Mary's	Trepassey
Barisway	St. Mary's	St. Mary's
Beckford C. Shore	Placentia and St. Mary's	Placentia
Branch	Placentia	do
Bordeaux	do	Little Placentia
Black River	do	do
Barren Island	do	do
Bett's Hole	do	do
Burgeo	do	do
Bona	do	Great Placentia
Burnt Islands	do	do
Bane Harbor	do	do
Bean Bois	Burin	Burin
Burin	do	do
Brunet Island	Fortune Bay	Harbor Breton
Bay de East	do	English Harbor
Bay de North	do	do
Rock Side Cove	Trinity	Trinity
British Harbor	do	do
Branch	Placentia and St. Mary's	English Harbor
Black Duck Cove	do	do
Boun's Dear Cove	do	do
Broad Cove	do	do
Barrow	Fortune Bay	English Harbor
Belloram	do	do
Blue Pinion	do	do
Bay L'Argent	do	do
Ball Bay	do	do
Banburgh's Cove	do	do
Boxy	do	Harbor Breton
Blanchett	do	do
Bay de L'ean	do	do
Brinball's Head	do	do
Bonne Bay	do	do
Brimball's Store House	LaPoile	Burgeo
Burgeo (Upper)	do	do
Burgeo	Placentia and St. Mary's	Little Placentia

None but first class Workmen employed by J. W. Collier and satisfaction warranted.

NAME OF PLACES.	DISTRICTS.	POST TOWNS.
Burgeo (Lower)	LaPoile	Burgeo
Brazils	do	Rose Blanche
Baker's Tickle	do	do
Burnt Islands	do	do
Brent's Cove	do	do
Bede Cove	do	do
Bear Cove	do	do
Cape Spear	St. John's East	St. John's
Chamberlain	Harbor Main	do
Chapel's Cove	do	Harbor Main
Cat's Cove	do	do
Clarks Beach	Brigus	Brigus
Cow Head	Fogo and Twillingate	Twillingate
Coiliers	Harbor Main	Brigus
Cupids	Brigus	do
Caplin Cove	do	do
Clark's Beach	do	do
Centre Harbor	Harbor Grace	Harbor Grace
Coosh	do	do
Coley's Point	do	Brigus
Carbonear	Carbonear	Carbonear
Cloun's Cove	Bay-de-Verds	do
Caplin Cove	do	do
Chapel Arm	Trinity	Harbor Grace
Chance Cove	do	do
Cat Cove	do	Trinity
Cuckold's Cove	do	do
Catalina	do	do
Careless Harbor	do	do
Castle Cove	do	do
Cottrell's Island	Bonavista	Greenspond
Cobbler's Island	do	do
Cape Island	do	do
Cape Freels	do	do
Cat Harbor	Fogo	do
Can Island	do	Fogo
Cape Fogo	do	do
Change Islands	do	do
Caplin Cove	do	Tilt Cove
Caplin Bay	Ferryland	Perryland
Cape Broyle	do	Bay Bulls
Cape Race	St. Mary's and Placentia	Gassey
Cape Pine	do	do
Colinet	do	St. Mary's
Cape Dog	do	do
Cuslett	do	do
Clattice Harbor	do	Great Placentia
Corbin	Burin	do
Conn	Fortune Bay	Burin
Cinque-Serf	LaPoile	Harbor Breton
Corbon	do	Rose Blanche
Con Harbor	do	English Harbor
		Harbor Breton

NAME OF PLACES.	DISTRICTS.	POST TOWNS.
Corbon	LaPoile	Harbor Breton
Coomb's Cove	do	do
Cannalgre Bay	do	do
Cull de Sac	do	do
Cape La Have	do	do
Coppett	do	Burgeo
Colteau	do	do
Channel	Burgeo and LaPoile	Channel
Dock port de Grave	Brigus	Brigus
Dock Point	Harbor Grace	Harbor Grace
Daniel's Cove	Trinity	Carbonear
Dildo Cove	do	Harbor Grace
Deer Island	Bonavista	Green-pond
Dend Man's Bay	Fogo and Twillingate	do
Doting Cove	do do	do
Dog Bay	do do	Twillingate
Distress	Placentia and St. Mary's	Placentia
Dog Harbor	do do	Little Placentia
Davis's Cove	do do	do
Duriclle	Burin	Burin
Dawson's Cove	Fortune Bay	Harbor Breton
Despair Bay	do	do
Doctor's Harbor	do	English Harbor
Dragon Bay	Burgeo and LaPoile	Harbor Breton
De Island	do do	Burgeo
English Harbor	Trinity	Trinity
Exploits, Burnt Island	Fogo and Twillingate	Exploits
English Harbor	Fortune Bay	Harbor Breton
English Harbor, } near Belleram }	do	English Harbor
Eastern Point	Burgeo and LaPoile	LaPoile
Flat Rock, Torbay	St. John's East	St. John's
Freshwater	do	do
Fox Trap	Harbor Main	do Topsail
Freshwater	Bay-de-Verds	Carbonear
Fox Harbor	Trinity	Trinity
Friday's Cove	do	do
Fool's Island	do	do
Freshwater Bay	Bonavista	Green-pond
Flat Island	do	Bonavista
Flower Island	do	Green-pond
Fair Island	do	do
Fogo Har. and Island	Fogo and Twillingate	Fogo
Fortune Harbor	do do	Exploits
Thurry's Bite	do do	do
Ferryland	Ferryland	Ferryland
Fermeuse	do	do
Fox Harbor	Placentia and St. Mary's	Little Placentia
First Beach & Fresh'tr	do do	Great Placentia
Flat Island	Burin	do
Fox Cove	do	Burin
Fortane	do	do

J. W. COLLIER keeps the best Stock of Bordering and Mounting, G, Victoria Street.



NAME OF PLACES.	DISTRICTS.	POST TOWNS.
Forn	Fortune Bay	Harbor Breton
Furby's Cove	do	do
Fox Island Harbor	do	Burgeo
Francois	Burgeo and LaPoile	Burin
Frenchman's Cove	Burin	do
Gullies (Upper)	Harbor Main	Top-sail
Gullies (Lower)	do	do
Gasters	do	do
Gullies and Goulds	Brigus	Brigus
Grate's Cove	Bay-de-Verds	Carbonear
Green Harbor	Trinity	Harbor Grace
Gooseberry Cove	do	do
Ganny Cove	do	do
Green Bay	do	Trinity
Green Island Cove	do	do
Gooseberry Island	Greenspond	Donavista
Greenspond & Tickle	do	Greenspond
Grant's Island	do	do
Gander Bay	Fogo and Twillingate	Fogo
Grapes Cove	do do	do
Goulds (Bay Bulls)	St. John's West	St. John's
Gaskier	St. Mary's and Placentia	St. Mary's
Gull Cove	Placentia and St. Mary's	Placentia
Golden Bay	do do	do
Gooseberry	do do	do
Grandy's Point	do do	do
Gallows Harbor	do do	Great Placentia
Golds Cove	Burin	Burin
Grand Bank	do	do
Grand Beach	do	do
Garnish	Fortune Bay	do
Grand John	do	Harbor Breton
Grant's Cove	do	do
Great Harbor	do	do
Grole	do	do
Gripe Island	do	do
Gaultois	do	do
Great Nerveis	do	do
Grandy's Brook	do	Burgeo
Gana	Burgeo and LaPoile	LaPoile
Gull Island	Fogo and Twillingate	Twillingate
Horse Cove	Conception Bay	Portugal Cove
Holyrood, Nh. and Sh.	Harbor Main	St. John's
Harbor Main	do	Harbor Main
Halls Town	Port-de-Grave	Brigus
Hibbs Hole	do	do
Harbor Grace	Harbor Grace	Harbor Grace
Hani's Harbor	Trinity	Carbonear
Heart's Breas-e	do	do
Heart's Delight	do	do
Heart's Content	do	do
Heart's Ease	do	do

SHIPS PAINTING done at the shortest notice by J. W. COLLIER, 6, Victoria Street.

NAME OF PLACES.	DISTRICTS.	POST TOWNS.
Hare Bay	Fogo and Twillingate	Fogo
Harbor Island	do do	do
Herring Neck	do do	Twillingate
Hall's Bay	do do	do
Holyrood, pond	Placentia and St. Mary's	St. Mary's
Harry Cove	do do	Salmonier
Harbor Buffett	do do	Little Placentia
Bay Stack	do do	do
Harbor Mille	Fortune Bay	Harbor Breton
Hare Harbor	do	do
Harbor Breton	do	do
Hermitage Cove	do	do
Harry's Cove	do	do
Harbor Gulley	do	do
Hatter's Point	Burgeo and LaPoile	Burgeo
Harbor LeCou	do do	Rose Blanche
Hiscock's Point	do do	do
Island Cove	Harbor Grace	Harbor Grace
Island Cove (Lower)	Bay-de-Verds	Carbonear
Island Cove	Trinity	do
Ireland's Eye	do	Trinity
Indian Arm	Bonavista	Bonavista
Indian Bay	do	do
Indian Islands	Fogo and Twillingate	Fogo
Indian Cove	do do	Exploits
Isle of Valen	Placentia and St. Mary's	Great Placentia
Isle of Glue	Fortune Bay	English Harbor
Isle de Mort	Burgeo and LaPoile	Rose Blanche
Juniper Stump	Port-de-Grave	Briggs
Juggler's Cove	Harbor Grace	Harbor Grace
Job's Cove	Bay-de-Verds	Carbonear
Joe Batt's Arm	Fogo and Twillingate	Fogo
Jack-on's Arm	do do	Nippers Harbor
John's Pond	St. Mary's and Placentia	St. Mary's
Jigging Hole	Trinity	Trinity
Jean de Bay	Burn	Burn
Jack Fountain	Fortune Bay	Harbor Breton
Jersey Harbor	do	do
Kelligrews	Conception Bay	St. John's, Topsail
Kerley's Harbor	Trinity	Trinity
Knights Cove	do	do
Kings Cove	Bonavista	King's Cove
Reels	do	do
Kings Cove	Fogo and Twillingate	Tilt Cove
Kings Harbor	Burgeo and LaPoile	LaPoile
Logy Bay	St. John's East	St. John's
Long Pond	Harbor Main	do Topsail
Lance Cove	do	do do
Long Beach	Port-de-Grave	Briggs
Lower Small Point	Bay-de-Verds	Carbonear
Low Point	do	do
Lance Cove	Trinity	do



NAME OF PLACES.	DISTRICTS.	POST TOWNS.
Mosquito	Burgeo and LaPoile	Burgeo
Moon's Face	do do	LaPoile
Margaree	do do	do
Northern Gut	Port-de-Grave	Brens
Northern Bay	Bay-de-Verds	Carbonear
New Perlican	Trinity	do
New Harbor	do	Harbor Grace
New Bonaventure	do	Trinity
Normans Cove	do	Harbor Grace
New Harbor	do	do
Newelis Island	Greenspond	Greenspond
Newmans Cove	Bonavista	Bonavista
Noggin Cove	Fogo and Twillingate	Fogo
New Bay	do do	Exploits
Nimrod	do do	do
Nippers Harbor	do do	Nippers Harbor
North Harbor	St. Mary's and Placentia	St. Mary's
North Harbor	do do	Little Placentia
New Harbor	Fortune Bay	Harbor Breton
New Harbor	Burgeo and LaPoile	Burgeo
Outer Cove	St. John's East	St. John's
Oterbury	Bay-de-Verds	Carbonear
Gehre Pit Cove	do	do
Old Perlican	Trinity	do
Old Shop	do	Harbor Grace
Old Bonaventure	do	Trinity
Corn Hall	Bonavista	do
St. John's Cove	Placentia and St. Mary's	Placentia
St. John's	do do	do
Old Mans Bay	Burgeo and LaPoile	Burgeo
Pass Island	Fortune Bay	Harbor Breton
Pouch Cove	St. John's East	St. John's, Torbay
Portugal Cove	do	do Port. Cove
Petty Harbor	do West	do
Port-de-Grave	Port-de-Grave	Brens
Perrys Cove	Bay-de-Verds	Carbonear
Plate Cove	Bonavista	Trinity
Pouch Cove	do	Bonavista
Pools Island	Greenspond	Greenspond
Pinchards Island	do	do
Pig Island	do	do
Pond Head	do	do
Portugal Cove	St. Mary's and Placentia	Trepassey
Point LaLaye	do do	St. Mary's
Patrick's Cove	do do	Great Placentia
Point Verd	do do	do
Placentia (Great)	Placentia and St. Mary's	do
Placentia (Little)	do do	Little Placentia
Point Mali	do do	do
Presque	do do	Great Placentia
Paradise (Great)	do do	do
Paradise (Little)	do do	do

Mixed Paints, Glass, Putty, Oil and Turpentine, always on hand by J. W. COLLIER.



NAME OF PLACES.	DISTRICTS.	POST TOWNS.
Sandy Cove	Bonavista	Bonavista
Salvage	do	do
Shoe Cove	Greenspond	Greenspond
Swain's Island	do	do
Ship Island	do	do
Seldom-come-by	Fogo and Twillingate	Fogo
Shoal Bay	do do	do
Stocking Harbor	do do	Nippers Harbor
Snooks Arm	do do	Tilt Cove
Shoe Cove	do do	do
St. Shot's	Placentia and St. Mary's	Trepassey
St. John's	St. John's	St. John's
Ship Cove	Placentia and St. Mary's	Great Placentia
St. Lawrence (Great)	Burin	Burin
St. Lawrence (Little)	do	do
Spencer's Cove	Placentia and St. Mary's	Little Placentia
Seaveley's Cove	do do	do
Southern Harbor	do do	do
Sound Island	do do	do
St. Brides	do do	do
Sandy Harbor	do do	Great Placentia
St. Kyran's	do do	do
South East Bite	do do	do
Spanish Room	Burin	Burin
Sagoua Island	Fortune Bay	Harbor Breton
Stones Cove	do	do
St. Jacques	do	do
S. W. Bainsway	do	do
Sam Hitches	do	do
Southern Harbor	do	English Harbor
Swoir Cove	Burgeo and LaPoile	Burgeo
Seal Island Harbor	do do	LaPoile
Topsail	Harbor Main	St. John's, Topsail
Turks Gut	Port-de-Grave	Buigns
Turks Cove	Trinity	Carbonear
Tickle Harbor	do	Harbor Grace
Trinity	do	Trinity
Trouty	do	do
Thoroughfare	do	do
Tilton Harbor	Fogo and Twillingate	Fogo
Three Arms	do do	Nippers Harbor
Twillingate	do do	Twillingate
Tory Town	do do	do
Tizzard's Harbor	do do	do
Tilt Cove	do do	Tilt Cove
Trion Islands	do do	Trion
Torbay	St. John's East	St. John's
Trepassey	St. Mary's and Placentia	Placentia
Tacks Beach	do do	Great Placentia
Toselo	do do	Great Placentia
The Brook	Fortune Bay	English Harbor
Turnip Cove	do	do

GRAINING and GIDDING done in a superior style by J. W. COLLIER, G, VICTORIA ST.

None but first class Workmen employed by J. W. Collier and satisfaction warranted.

NAME OF PLACES.	DISTRICTS.	POST TOWNS.
The Reach	Fortune Bay	English Harbor
Upper Small Point	Bay-de-Verds	Carboncar
Upper Amherst Cove	Bonavista	Bonavista
Virgins Cove	Placentia and St. Mary's	Little Placentia
Victoria Town	Bonavista	Bonavista
Vitfers Cove	Trinity	Trinity
White Monday Hill	Harbor Grace	Harbor Grace
Western Bay	Bay-de-Verds	Carboncar
White Point	Trinity	Trinity
Willess Bay	do	do
Warrens Harbor	Bonavista	Bonavista
West'n Arm, Rocky By	Fogo and Twillingate	Fogo
Western Head	do do	Twillingate
Wild Cove, St. come By	do do	Fogo
Ward's Harbor	do do	Exploits
Waldrons Cove	do do	do
Witless Bay	Ferryland	Bay Bulls
Woody Island	Placentia and St. Mary's	Little Placentia
Wreck Island	Burgeo and LaPoile	Burgeo
Western Point	do do	LaPoile
LaCroix	Fogo and Twillingate	Tilt Cove
Brien's Cove	do do	do
Pacquet	do do	do
Mings	do do	do
Coachman's Cove	do do	do
Flower de Louis	do do	do
Leck Drawer	do do	do
Seal Cove	do do	do
Hawling Point or } Bears Cove }	do do	do

**Commissioners of Wrecked Property.**

Placentia and St. Mary's, George Simms, jr. District of Burin, George Bishop. Channel, W. S. Green and John Evans. La-Poile, Thomas Read. Burgeo, Francis Parsons. Placentia, Jas. E. Croncher. St. Mary's, Adam J. McKen. Ferryland, Pierce Mallowney and W. W. Carter. Bay-de-Verds, John Lewis.—Trinity, (south) ———, Trinity, (north) John Millen.—Greenspond, John T. Oakley. Fogo, James Fitzgerald. Twillingate, Thomas Peyton. Fortune Bay, ———, Conception Bay, G. W. R. Hierlhy. St. John's, T. G. Morry. Labrador, ———, Point May to Garnish, Joseph G. Haddock. Point May to Lawn Point, Henry Bentler. Cape Race to St. Peter's River, Henry Pannell and Augustin Simms. Cape Bonaventure to Salvage, Michael Murphy. St. Peter's River to Point Lance, James Harney. Campbell to Cape L. Line, P. G. Hagen.

**Commissioners of Affairs.**

Chairman—John Goodridge: Hon. L. Thorburn, Captain Cleary, Lewis Tessier and Aliaz Goodridge.

## Judicial Department.

### SUPREME COURT.

*Chief Justice*—Sir Hugh W. Hoyles, Knight.

*Assistant Judges*—Honorable Bryan Robinson and John Hayward.

*Attorney General*—Honorable F. B. T. Carter.

*Queen's Counsel*—Hon. George H. Emerson, Hon. Frederick B. T. Carter, Hon. W. V. Whiteway, R. J. Pinsent, P. Emerson, J. I. Little, D. W. Prowse and Thomas J. Kough.

*Chief Clerk and Registrar Supreme Court*—Prescott Emerson.

*Clerk in Office of Chief Clerk and Registrar*—H. T. B. Wood.

*Chief Clerk and Registrar Supreme Court on Northern Circuit*—Lewis W. Emerson.

*Clerk of Supreme Court on Southern Circuit*—Robert John Parsons, jr.

*Registrar Southern District*—Henry T. B. Wood.

*Crier of the Supreme Court and Tipstaff*—John Burke.

*Barristers and Attorneys of the Supreme Court at St. John's, according to seniority, exclusive of Attorney and Solicitor Generals and Queen's Counsel*—John S. Stephens, Robert R. W. Lilly, Thomas J. Kough, Augustus O. Hayward, D. W. Prowse, Michael J. O'Mara, Prescott Emerson, Robert J. Kent, Henry T. B. Wood, Robert J. Parsons, jr., W. O. Wood, James S. Winter, Alexander J. W. McNeily, B.A., John H. Boone, D. J. Brown, D. J. Greene, R. Raftus, J. G. Conroy, P. J. Scott, T. F. Walsh, Stanley B. Carter, H. H. Carter, I. R. McNeily, Wm. J. Hogan, George M. Johnson.

*Barristers and Attorneys Northern District*—Henry A. Cliff, Harbor Grace.

*Attorneys at Law*—Robert R. Holden, James M. Donnelly, Geo. H. Emerson, jr., John J. Flannery.

*Law Society Benchers*—Hon. Solicitor General, Treasurer ; ———, Secretary ; Hon. Attorney General, J. I. Little, Thomas J. Kough. Librarian, John Burke.

*Sheriffs*—Central District, Thomas Talbot ; Sub-Sheriff—Lionel T. Chancey. Northern District, John Bemister. Southern District, James Carter. Deputy-Sheriff for District of Burgeo and LaPoile, Frederick Cox.

*Masters-in-Chancery*—Hon. Geo. H. Emerson, Thos. J. Kough, Robert J. Pinsent, Hon. W. V. Whiteway, Prescott Emerson and James S. Winter.

### VICE-ADMIRALTY COURT.

*Judge*—The Chief Justice for the time being.

*Registrar*—Robert R. W. Lilly.

*Marshal*—A. O. Hayward.

*Surrogates*—Henry T. B. Wood and D. W. Prowse, St. John's. Lewis W. Emerson, Harbor Grace.

J. W. COLLIER keeps the best Stock of Bordering and Moulding, 6, Victoria Street.



CENTRAL DISTRICT COURT.

*Judges*—D. W. Prowse and Henry Renouf.

*Clerk of the Court*—Robert R. W. Lilly.

*Supreme Court*—Spring Term commencing 20th May, to continue three weeks; Autumn Term 20th November, and to continue three weeks; with power to the Judges to prolong the term from day to day, not exceeding six days in all.

*Sessions after Term*—The first Monday in February, March, April and July, and to continue for a period not exceeding six days.

*Commissioners for Issuing Mense and Final Process and Supernas returnable into the Supreme Court, for taking Affidavits and Recognition of Bail in any Suit pending in said Court.*

*Central District*—Prescott Emerson, Henry T. B. Wood and George R. Lilly, St. John's.

*Northern District*—Lewis W. Emerson, David Rogers, Harbor Grace. Israel L. McNeil, Carbonear. John C. Nuttall, John Wilcox, Geo. Gushue, Brigus. John Louis, Lower Island Cove. G. W. R. Hierlihy, Bay Roberts. Wm. Holden, Harbor Main. William Christian, Old Perlican. Richard Penny, Hearts Content. William S. Green and Gilbert H. Cole, Trinity. Alex. Bremner, Catalina. John Lawrence, Bonavista. John T. Oakley, Wm. Lang, Greenspond. James Fitzgerald, Fogo. John Peyton, Twillingate. John M. Maddock, Port-de-Grave.

*Southern District*—David W. O'Mara, Ferryland. Adam J. McKen, Placentia. James Pittman, Lamaline. George Simms, Grand Bank. Francis A. Parsons, Burgeo. Philip Hubert, Harbor Breton. James Moran, Thomas Winter, Burin. Nelson Bailie, Oderin. James P. LeGros, Petites. George Sutton, Trepassey. Thomas Driscoll, Tonds Cove. Henry Camp, Push-through. Alex. McKenzie, M.D., Rose Blanche.

NOTARIES PUBLIC.

*St. John's*—Hon. George U. Emerson, Robert H. Prowse, G. F. Bown, Hon. F. B. T. Carter, Robert R. W. Lilly, Hon. E. Morris, William H. Mare, Thomas J. Kough, Hon. W. V. Whiteway, Robert J. Pinsent, Richard B. Holden, Augustus O. Hayward, William O. Wood, James E. Winter, Robert J. Parsons, jr., John H. Boone, A. J. W. McNeilly, John T. Gillard, Daniel J. Green, John Maher, John A. Rochfort, G. H. Dickinson.

*Harbor Grace*—Lewis W. Emerson, H. A. Clift, James B. Drysdale, Andrew S. Drysdale. Carbonear, Israel L. McNeil. Twillingate, John Peyton. Bay Roberts, G. W. R. Hierlihy. Burin, Francis Berteau. Fogo, James Fitzgerald. Brigus, George Gushue.

*Southern District*—James Carter.

STIPENDIARY MAGISTRATES.

*St. John's*—Daniel Woodley Prowse and Henry Renouf, Judges Central District Court.

*Conception Bay*—Thomas R. Bennett, District Judge, Harbor Grace. Israel L. McNeil, Carbonear. John Wilcox, Brigus.

Trinity Bay—Gilbert H. Cole, Trinity. William Christian, Old Perlican.

Bonavista—David Candow.

Greenspond—John T. Oakley.

Pogo—James Fitzgerald.

Twillingate—John Peyton.

Ferryland—David W. O'Mara.

Placentia and St. Mary's—Adam J. McKen, Placentia. James Harney, St. Mary's.

Burin—James Moran.

Grand Bank—George Simms.

Fortune Bay—Philip Hubert, Harbor Breton.

Burgeo—John Jordan.

Channel—Frederick Cox.

JUSTICES OF THE PEACE.

*For the Colony of Newfoundland*—The Judges of the Supreme Court, the Members of the Executive Council, and Hon. Ambrose Shea, Hon. E. D. Shea, Hon. James J. Rogerson, Daniel W. Prowse, R. R. W. Lilly, Paul Carty, Henry Renouf, George Carter, Frederick J. Vallance.

*Central District*—Hon. Stephen Rendell, Hon. John Winter.

*Northern District*—John Peyton, John T. Oakley, John Tilley, Wm. Christian, Alexander Bremner, John G. Skelton, John Munn, David Candow, Wm. S. Green, John Rorke, James L. Prendergast, John Wilcox, Philip Levesconte, James Fitzgerald, Lewis W. Emerson, Israel L. McNeil, John Lewis, Reuben Bemister, George Skelton, James Alcock, Wm. Stirling, Joseph J. Pearce, Nathan Norman, Wm. Lang, Wm. Holden, Hay Findlater, John Sheehan, Wm. P. Taylor, Gilbert H. Cole, John W. Owen, G. W. R. Hierlihy, Edward T. Pike, Alex. W. Bremner, Geo. C. Rutherford, Patrick Nowlan, James Tarahan, John M. Maddock, B. T. H. Gould, Michael Dwyer, Hon. W. J. S. Donnelly, James Burden, James Winser, Charles Furey, John Bartlett, John Millen, Samuel Evans, Wm. Lethbridge, E. C. Watson, James Gardner, Daniel Green, Wm. Meadus, John S. Lockyer, Alex. McMillan, Thos. Winser, Michael Bolger, Geo. Varly, Charles Dawe, James Alexander, M.D., Dr. R. White, Thos. C. Buder, James H. Watson, Frederick White, Daniel Murphy, John Smitz, George Gushue, Richard Penny, Josiah Manuel, Capt. E. M. Cookesley, James Hippisley, Adolph Guzman, John Buder.

*Southern District*—Thomas Renouf, Edward Evans, Francis Berteau, Owen Pine, Richard Marshall, Patrick Furlong, Thomas Winter, Philip Sorsceliel, John W. English, John Jordan, Richard McGrath, Philip Holman, Thos. R. Keats, Francis Road, Thomas O'Rielly, James Pittman, W. J. Coen, Henry Benning, J. White, Michael Gorman, Adam J. McKen, John Farnex, Thos. Driscoll, Chas. E. Cossman, David W. O'Mara, E. C. Gallop, Fred. Cox, Wm. Phoran, Messrs Tilley, Thos. Hodge, James Harney, Philip Hubert and Chas. D. Chambers.

W. COLLIER keeps the best assortment of Bedroom, Hall and Room Paper.

THE NEWFOUNDLAND ALMANAC.

CLERKS OF THE PEACE.

St. John's—(For Central District) R. R. W. Lilly. Harbor Grace, Hugh W. Trapnell. Carbonear—Joseph McKay. Brigus—J. C. Nuttall. Trinity—W. S. Green. Bonavista—John Lawrence. Twillingate—Aaron A. Pearce.

CONSTABULARY.

Inspector and General Superintendent of Constabulary for Newfoundland—Paul Carty. St. John's—Acting Sub-Inspector—James Kenna. Head Constable—John Nicol. Infantry Sergeants—Patrick Coady, Edward Doyle, John Sullivan and Geo. Winslow. Acting Serjeant—Isaac W. Bartlett. Acting Cavalry Serjeant—Philip Lacey. Medical Attendant—Dr. Crowdy. Harbor Grace—Head Constable, Luke Fallon Serjeant—Frederick Williams. Acting Serjeant—Thomas Fennessey. Carbonear—Serjeants, Peter McBaile and Mat. McKee. Bay Roberts—Acting Serjeant, Joseph Rielly. Twillingate—Serjeant Wells. Brigus—Serjeant Jackson. Catalina—Head Constable, J. R. McCowan. Placentia—Serjeant, Michael Kearney.

INSPECTORS OF WEIGHTS AND MEASURES.

Thomas Brien, St. John's. John Brace, Harbor Grace. Peter McBaile, Carbonear. William Horwood, Brigus. John Milfen, Ragged Harbor to Spiller's Cove, inclusive. (District of Trinity). Nathaniel Patten, Burin. Henry Camp, from Pass Island to Cape L'Anse-au-Loup, District of Burgeo. John Lawrence, Bonavista South. Charles Harris, Gooseberry and adjacent Islands. G. W. R. Hierlihy, Ray Roberts. Wm. D. Cross, North side of Trinity Bay. John G. Lucas, Fogo. Marmaduke Clow, District of Ferryland. Albert Stirling, District of Fortune Bay. Fred. Wyatt, Greenspond. L. Mills, Grand Bank. James Peyton, Twillingate. John Coffin, King's Cove. John Collis, Trinity.—Charles Randall, Hearts Content. Edward O'Brien, Harbor Main. T. E. Collett, Harbor Burlett.

Savings' Bank.

Governors—Five members of the House of Assembly and three members of the Legislative Council, viz.:

Hon. F. B. T. Carter, Hon. J. J. Rogerson, Hon. A. Shea, Hon. W. V. Whiteway, and the Hon. the Speaker of the House of Assembly. Hon'bles. Edward White and W. J. S. Donnelly of the Council.

Directors—Hon. F. B. T. Carter and Hon. A. Shea. Cashier—Hon. Edward Morris.

The Bank is open every Monday between the hours of 12 and 2 o'clock, for depositors' business.

BRANCH BANK—HARBOR GRACE.

Cashier and Clerk—Patrick Devereux.

**Board of Health.**

*Health Officers*—Henry Shea, M.D., and Thomas Howley, M.D., St. John's. Wm. Allan, V.D., and Thomas R. Bennett, Harbor Grace. Francis Moran, M.D., Lunenburg. Wm. Stirling, M.D., Twillingate. Hay Findlater, M.D., Fogo. Robert White, M.D., Trinity. Dr. R. M. Nelson, Carbonear. Dr. Fitzgerald, Fortune Bay. Dr. A. Robillard, Chamel. Dr. Anderson, Briggs and Port-de-Grave. Dr. Skelton, Greenspond. Dr. Alexander, Tilt Cove.

*Board of Health and Health Wardens for the Town and District of St. John's*—Judge Prowse, Chairman; Judge Renouf, Hon. S. Reddell, Hon. W. J. S. Donnelly, Hon. P. G. Tessier, Hon. R. Thorburn, Robert Alexander, Robert J. Kent, Henry Shea, M.D., and Thos. Howley, M.D. (Health Officers) Chas. Crowley, M.D., Fred. Bunting, M.D., Chas. H. Renouf, M.D., Wm. C. Summs, M.D., and R. R. W. Lilly, Secretary.

*Board of Health, Harbor Grace*—Israel L. McNeil, Wm. Allan, John Munn, Thomas H. Ridley, James L. Prendergast, George Rutherford and Lewis W. Emerson.

*Board of Health, Carbonear*—John Rorke, Edward T. Pike, B. T. H. Gould, Michael Bulger, Wm. P. Taylor, Israel L. McNeil, Dr. Nelson, Michael Dwyer.

*Medical Officer to Board of Trade for sick Seamen, port of St. John's*—Wm. C. Summs, M.D.

**Queen's Printer.**

John Collier Withers, Esquire.

**Educational Institutions.**

ST. JOHN'S ACADEMY.

*Directors*—Church of England Board—Right Rev. the Lord Bishop, Hon. the Chief Justice, Hon. Judge Robinson, Hon. F. B. T. Carter, D. W. Prowse. *Head Master*—Rev. Joseph F. Phelps. *Second Master*—T. Owain Jones.

*Roman Catholic Board*—Right Rev. Dr. Power, Joseph I. Little, Hon. Thomas Talbot, William P. Walsh, Maurice Fenelon. *Masters*—Very Rev. P. A. Slatery, Rev. Wm. Fitzpatrick, and Messrs. P. J. O'Neil, B.A., and F. J. Doyle.

*General Protestant Board*—Reyds M. Harvey, J. D. Patterson, Thomas Hall, and Hon. Robert Thorburn, Hon. P. G. Tessier, J. Goodfellow, W. Boyd, Gilbert Browning and J. N. Finlay.

NEWFOUNDLAND WESLEYAN ACADEMY.

*Directors*—Rev. John S. Peach, Hon. J. J. Rogerson, C. R. Ayre, Hon. Stephen Beacell. *Principal*—Robert E. Holloway, B.A. *Second Master*—Emile Hancock. *Third Master*—J. W. Nichols.

Mixed Paints, Glass, Putty, Oil and Turpentine, always on hand by J. W. COLLIER.

ber  
agus  
law-

y for  
ector  
Ser-  
Geo.  
valry

ant—  
.

Peter  
Miffen,  
rimity).  
land to  
navista  
ds. G.  
side of  
District  
Fred.  
Peyton,  
rimity.—  
Harbor

bly and  
nea, Hon.  
House of  
nnelly of

of 12 and

THE NEWFOUNDLAND ALMANAC.

HARBOR GRACE GRAMMAR SCHOOL.

Directors—John Mann, Hugh W. Trapnell, John Ryan, Mark Parsons, Thomas R. Bennett, Patrick Devereux. Master—John I. Roddick.

CARBONEAR GRAMMAR SCHOOL.

Directors—Rev. W. J. Hoyles, W. Hawker and John Pearce, Church of England branch. Right Rev. Dr. Carfagnini, Rev. J. O'Connor and Richard McCarthy, Roman Catholic Branch. Rev. James Dove, Israel L. McNeil, B. T. H. Gould and Wm. Penny, Wesleyan branch.

COLONIAL AND CONTINENTAL CHURCH SOCIETY.

[Incorporated 1852—Instituted originally as the Newfoundland School Society, 1823.]

Patron—Her Most Gracious Majesty the Queen. Vice-Patrons—His Grace the Archbishop of Canterbury, His Grace the Archbishop of York, His Grace the Archbishop of Armagh. President—the Most Honorable the Marquis of Cholmondeley, and 72 Vice-Presidents, consisting of Peers of the United Kingdom, English and Colonial Bishops, Deans, Colonial Governors, (including the Governor of Newfoundland) Members of Parliament, &c.

Corresponding Committee in Newfoundland—President, Hon. Frederick B. T. Carter; Vice-President, Robert J. Pinsent; Treasurer and Secretary, E. L. Jarvis; Inspector, J. W. Marriott; Hon. J. Winter, Hon. W. V. Whiteway, Theo. Clift, D. W. Prowse, J. L. Noonan, P. Emerson, James Winter, Commander Robinson.

School Teachers—St. John's, (Central School) Daniel Currie, Boys; Miss Lundy, Girls; Miss Pride, Infants. Training Pupil Teachers of the Society—Miss Blackler, Miss Willmore, Miss Adams, Miss Cole, Miss Everett, Miss Martin, Miss Mercer, Miss Renouf, Miss Powsland. Belloram, Miss Saunders. Petty Harbor, Mr. and Mrs. Bishop. Portugal Cove, Mr. Talk. Brigus, Mr. and Mrs. Lawrence. Port-de-Grave, Mr. and Mrs. Maddock and Miss Andrews. Spaniard's Bay, Mr. and Mrs. Earle. Bishop's Cove, Miss Manderson. Harbor Grace, Mr. and Miss Ward. Heart's Content, Mr. Gardner. Trinity, Mr. E. Collis and Miss Lockyer. Bonavista, John Lawrence. Salvage, Mr. Rowsell. Greenspond, Mr. Skiffington. Swains Island, Ed. Bishop. Twillingate, Mr. Lloyd. Fogo, Mrs. Plomer. Great St. Lawrence, Mr. and Mrs. Pitcher.

CHURCH OF ENGLAND BOARDS OF EDUCATION.

St. John's—Revs. Ambrose Heygate, Edward Botwood, A. C. F. Wood, and Hon. Dr. Winter, Hon. A. W. Harvey, Edwin Duder, Judge Prowse, Dr. Crowley, George Rendell, Hon. W. V. Whiteway and J. L. Duchemin, H. J. Stubb.

Brigus—Rev. R. Holland Taylor, and Messrs. Wm. Anderson, M.D., John Smith, Robert Wells, (Salmon Cove) Elijah Bishop, (Burnt Head.)

Port-de-Grave—Rev. J. C. Harvey, and Messrs. Jno. Andrews, Thomas Battan, M. Dawe and J. M. Maddock.

Bay Roberts—Rev. W. C. Shears, and Messrs. Charles Dawe, Isaac Bartlett, Dr. Wm. Fraser, and Eli Dawe, (Colley's Point.)

Harbor Grace—Revs. B. Jones, J. M. Noel, John Godden, A. C. Warren, and Messrs. Joseph Godden, Thomas R. Bennett, H. Fitzgerald and W. H. Earle.

Carbonear—Rev. W. J. Hoyles, and Messrs. Wm. C. Hawker, Samuel Bennett, John Pearce, Geo. Crocker and Dr. J. Ryall.

Bay-de-Verds—Rev. C. S. Chamberlain, and Messrs. Geo. Cull, (Caplin Cove) Jonas Garret, Henry Blundon, Charles Blundon, Henry Stephens, (Bay-de-Verds) Wm. Meadus, (Grates Cove)

Trinity Bay South—Revs. G. Gardner, C. S. Chamberlain and Messrs. Wm. Meadus, sr., James Watson and Neah Hendy, (Scilly Cove.)

Trinity Bay West—Revs. G. Gardner, H. Petley, and Messrs. James Moore, sr., John Northover, (New Portlican) James Read, (Hearts Delight) James Gardner, sr., and Joseph Hopkins, (Hearts Content.)

Trinity Bay North—Rev. B. Smith, Dr. R. White and Messrs. Gilbert H. Cole, Wm. Pittman, Edward M. Cooksley, A. W. Bremner and W. S. Green.

Trinity Bay East—Rev. Wm. Netten, and Messrs. D. Rennie, Thos. Stone, John Millin, Peter Martin, Thos. Martin and Geo. Raymond, sr.

Bonavista Bay South—Rev. A. E. C. Bayly, Dr. Skelton and Messrs. Samuel Millin, sr., Joseph Brown and Joseph Rolls.

Bonavista Bay West—Rev. W. Kirby, and Messrs. John Coffin, Fred. Shears, Robert Penny, Mat. Waugh, Samuel Gouin and Samuel Brown.

Bonavista Bay North—Rev. J. C. Craig, Dr. George Skelton, and Messrs. Fred. White, John C. Doinny and Wm. Kean.

Salvage—Rev. H. M. Skinner, and James Barden, John Brown, jr., Joseph House, jr., Wm. Noss, John Squires and A. Turner.

Fogo—Rev. C. Meek, and Messrs. H. J. Earle, James Rolls, jr., Josiah Waterman and Nathaniel Banks.

Twillingate—Revs. E. R. Murray, A. S. H. Winsor, (Herring Neck) and Messrs. Wm. LePbridge, Josiah Colborne, R. P. Rice, Robert Lewis and John Squires, (Herring Neck).

Notre Dame Bay, (north) Exploits, Bunt Island—Revs. W. Smith, John Hewit, Dr. Alexander, and Messrs. Chas. Collins, Thomas Winsor, E. J. Vallance, James Alcock, Geo. Sevier, Wm. Squarry, Geo. Payne, Leader Gill and John Colton.

Ferryland—Rev. C. Ellingham, and Messrs. James Carter, P. Winsor, John Morey and Robert Morey.

Placentia—Rev. J. Kingwell and Messrs. Richard Collett, Ed. Burton, Geo. Dicks, (Harbor Buffett) Samuel Coffin, (Spencer's Cove) H. W. LeMessurier, (Isle of Valen) and Nelson Bailin, (Oderin).

Burin—Rev. J. Lockward and Messrs. Francis Berteau, Louis S. Butler, John Paul, George Baker, Charles Hellett, and Thos. Winter.

Mark  
John

Pearce,  
Rev. J.  
Rev.  
Penny,

ndland

Patrons  
ie Arch-  
resident  
, and 72  
Kingdom,  
, (Includ-  
ment, &c  
ent, Hon.  
nt: Trea-  
Marriott;  
F. Prowse,  
Robinson.

el Currie,  
ing Pupil  
ore, Miss  
rceer, Miss  
Petty Har-  
e. Brigus,  
e. Maddock  
le. Bish-  
Miss Ward.  
s and Miss  
r. Rowsell.  
op. Twil-  
Lawrence,

n.  
wood, A. C.  
vey, Edwin  
Hon. W. V.

n. Anderson,  
lijah Bishop,

no. Andrews,

**None but first class Workmen employed by J. W. Collier and satisfaction warranted.**

**THE NEWFOUNDLAND ALMANAC.**

Lamaline—Rev. J. Darrell and Messrs. John Pittman, Thomas Laskey, James Pittman, Henry Hasked, sr. and John Cake.

Fortune Bay—Rev. W. K. White, Dr. Conrad Fitzgerald, and John Gaulton, (Harbor Briton) Rev. E. Colley, and Ed. C. Gallop, (Hermitage Cove) Rev. John Bishop and George Snelgrove, (Belloram).

Burgeo—Revds. John Cunningham, E. Colley, Dr. Geo. Hunt, and Charles M. DeQuettville, John Jordan, Stephen Vatcher and Wm. Anderson, sr.

LaPoile—Rev. F. Skinner, P. H. Sorsoliel, Philip LeMotte, Francis Read and Thos. Ridout.

Chammel—Rev. T. A. Goode, N. Smith, Fred. Cox, John LeMoine, W. T. Dicks, F. J. Tweedle and Joseph Small.

Inspector—Rev. William Pilot.

**WESLEYAN METHODIST BOARDS OF EDUCATION.**

St. John's—Revds. Thomas Harris, Simeon B. Dunn, and Hon. J. J. Rogerson, Hon. E. D. White, C. R. Ayre, John Steer, Geo. Gear, Robert E. Holloway, A. J. W. McNeilly, H. J. B. Woods, Stephen Knight, J. W. Pitts, Geo. W. Mews.

Brigus—Rev. Chas. Ladner, Abraham Bartlett, Geo. Gushue, John Wilcox, Capt. Alfred Smith, Capt. S. Whelan, and Capt. George Smith.

Port-de-Grave—Rev. George Bullen, and Wm. Kelland, Abm. Bursey, Wm. Sealey and Dr. Brown.

Bay Roberts—Rev. Joseph Lester, and Isaac Mercer, (of Benj.) Abner Snow, Samuel Mercer and Solomon French.

Harbor Grace—Rev. James Dove, and John Bemister, James Hippisley, Willis Parsons, Wm. Stephenson, John Trapnell and James Parsons.

Carbonear—Rev. John Goodison, and John Rorke, J. L. McNeil, B. T. H. Gould, Robert Maddock, Wm. Guy and R. Giles.

Bay-de-Verds—Rev. Jeremiah Embree, Rev. John G. Currie, and John Lewis, Wm. Lacey, Jacob Moores, Thos. Hilliard and John Diamond.

Trinity Bay South—Rev. Geo. H. Bryant, Rev. Thomas H. James, Wm. Christian, Ebenezer March, Elias March, Benjamin Benson and Thomas Avery.

Trinity Bay North—Rev. Jesse Heyfield, Rev. Samuel Snowden, John Cross, G. F. Stoneman, George Barnes, Matthias Martin and Moses Tilley.

Trinity Bay West—Rev. James Nurse, Henry March, Richard Penny, Thomas Newhook and Samuel Braec.

Trinity Bay East—Rev. F. G. Willey, Benjamin Snelgrove, Wm. Norman, John Hicks, Caleb Diamond, Abednego Hobbs and Richard Cole.

Bonavista Bay South—Rev. John Reay, Jabez Saint, James Saint, Stephen Abbott, John Swires, Wm. Oldfield and Charles Templeman.

J. W. COLLIER keeps the Best Stock of Bordering and Bindings, G. Victoria Street.

Bonavista Bay West—Rev. Alexander McGregor, John Olford, sr., Elias Brown, James Oldfield, John Perry, Wm. Pye, Wm. Matthews, Reuben Bemister and Naaman Green.

Bonavista Bay North—Rev. Charles Myers and George Allen, Geo. Burton, Geo. Dowden, Elijah Barry, Thos. Winsor and Geo. W. Hamm.

Fogo—Rev. Thomas W. Atkinson and John G. Lucas, Joseph Waterman, Robert Scott, Thos. C. Duder, Alfred Pike, William Perry, James Hicks.

Twillingate—Rev. B. Swann and Peter Samways, W. Hodder, Elias Roberts, Isaac Moores, sr., John Minty and Alfred Linfield.

Moreton's Harbor—Rev. Wm. Jennings, Rev. Anthony Hill and Charles Meyers, S. Snowden, James Pennock, Mark Osmond, Simon Mannel and Henry Knight.

Placentia Bay—Rev. H. C. Hatcher and Thomas Giles, James Hollett, Edmund Read and James Williams.

Burin—Rev. Joseph Pascoe and Owen Pine, Richard Paul, John Weare, George Bishop, John Mitchell, sr. and Benjamin Hollett.

Grand Bank—Rev. Solomon Matthews and Wm. Kendall, Ed. Evans, James Hickman, James P. Snook, Edward Bennett and James Lake.

LaPoile—Rev. Joseph Parkins and Saul Bonnell, Wm. Stone, Wm. Treadwell and Geo. Ellsworth.

Fortune Bay—Rev. Solomon Matthews and Wm. Kendall, John Williams, Edward Williams and Henry Williams.

Musgrave Harbor—Rev. W. R. Pratt and John Whitoway, James Hicks, R. Wellon and Thomas Elliott.

Notre Dame Bay, (north.)—Rev. George J. Bond, Rev. Wm. Bramfitt and Wm. Merrell, Henry Ebsary and Henry Knight.

Inspector—Rev. George S. Milligan, M.A. •

ROMAN CATHOLIC SCHOOLS.

St. John's—Orphan Asylum, (Boys). Teachers, the Christian Brothers. Industrial Department, Bartholomew Cousins.

St. Patrick's, River Head—Teacher, R. J. McKeown.

Harbor Grace—St. Patrick's Free School, (Boys). Teacher, Michael Scully.

ROMAN CATHOLIC BOARDS OF EDUCATION.

St. John's—Régat Rev. Dr. Power, Hon. R. Kent, Hon. Edward Morris, Hon. E. D. Shea, John Casey and J. G. Conroy.

Harbor Grace, Carbonear, Bay-de-Vers and Trinity, South and West—Most Rev. Dr. Carfagnini and Patrick D'Everea, Thomas Green, James Bolger, Andrew Deydals, (Harbor Grace) Richard McCarthy, Joseph McKay and Maurice Malone, (Carbonear).

Beiges—Right Rev. Dr. Carfagnini, Rev. E. F. Walsh and Jas. Tardem, James Moore, Patrick Nowlin, Richard Bellamy, sr. Patrick Brophy.



Harbor Main—Very Rev. Jeremiah O'Donnell, Wm. Holden, Charles Furey, Wm. Woodford, (Harbor Main) John Kennedy, sr., (Holyrood) James Hearn, jr. (Colliers).

Trinity Bay North—Rev. J. Carolan, (Bonavista) Patrick Murphy and Robert Lawlor, (Trinity) Edward Muggly and Thomas McCormack, (Catalina) Jeremiah Scandon and John Doody, (Ragged Harbor).

Bonavista South—Rev. Wm. Veitch, (King's Cove) William Keough, (Bonavista) Wm. Aylward, (Knight's Cove) S. Ryan, (Broad Cove) John Murphy, (Keels) And. Mallowney, (Tickle Cove) James Long, (Open Hall) John Chievers, (Plate Cove) J. Mallowney, (Indian Arm).

Bonavista North—Rev. Wm. Veitch, (King's Cove) John Turner, (Cottel's Island) Michael Cashin, (Goosberry Island) Samuel Kelly, sr., (Burnt Island) Nehs. Baterton, (Greenspond).

Fogo—Rev. James Brown, J. Fitzgerald, Miles Burke, (Joe Bats Arm) Wm. Green, Daniel Bryan, (Tilton Harbor).

Ferryland—Rev. M. A. Clancy, H. O'Neil, P. Jackman, Nicholas Power, R. Cashin, Gerald Jackman.

Bay Bulls—Very Rev. P. Cleary, Rev. Nicholas Roach, Jos. J. Williams, Thos. Driscoll, J. Blackler, M. Casey, Mehl. Carew, (Witless Bay) Thomas Gatherall, (Balline).

Great Placentia—Rev. C. Irvine, Maurice Power, Thos. Rielly, John Sinar, Francis Mooney, Samuel Collins.

Little Placentia—Rev. Robert Brennan, Thos. Freeman, Alex. Burke, John Rielly, Thos. Keits.

Placentia West—Rev. F. McCullow, Rev. Wm. Dootney, Wm. Brown, John Ryan, John Hennessy, Michael B. Dwyer.

St. Mary's—Rev. R. O'Donnell, J. Walsh, John Grace, Wm. Burke, Michael Egan, J. Murphy, J. Whelan.

Trepassey—Rev. T. Hennebury, J. Waddleton, John Tobin, J. Dexeux, John Neil, jr., John Hewitt.

Burin—Rev. Wm. Barn, Rev. V. Reardon, R. Marshall, J. Power, Mat. Marshall, Wm. Fitzpatrick, Thos. Gorman.

Fortune Bay—Rev. Dr. Howley, Rev. John Cullen, Rev. Jas. Walsh, P. Burke, W. Burke, P. Burke, jr., T. Kusella, T. Hearn.

Inspector—Michael J. Kelly.

THE BUREAU OF SCOTLAND BOARDS OF EDUCATION.

St. John's—Rev. M. Harvey, Rev. N. Forsythe, Hon. R. Thorburn, James Baird, James Murray, James Goodfellow, Alexander Taylor.

Harbor Grace—Rev. Alexander Ross, R. S. Mann, George C. Rutherford, John Paterson, W. H. Thompson.

CONGREGATIONAL BOARDS OF EDUCATION.

St. John's—Rev. T. Hall, Hon. P. G. Topley, B. Whelan, Jas. Howe, J. N. Lundy, Richard Neyle, H. W. Symonds.

Harbor Grace—Rev. George Harrington, (Smith's Sound) Rev. J. B. Seer, (Green and Whidmore) Thomas Gudgeon, (Tullaglate) John Hutchings and James Hutchings, (Harbor Grace).

**Ecclesiastical Department.****CHURCH OF ENGLAND.****DIOCESE OF NEWFOUNDLAND.**

The Right Rev. JAMES B. KELLY, D.D., D.C.L., Lord Bishop of Newfoundland.

**DEANERY OF AVALON.**

*Rural Dean*—Rev. T. M. Wood.

Rev. F. R. Murray, Cathedral.  
 Rev. J. C. Machin, Cathedral.  
 Rev. T. M. Wood, St. Thomas', St. John's.  
 Rev. A. C. F. Wood, M.A., St. Thomas', St. John's.  
 Rev. E. Botwood, St. Mary's.  
 Rev. R. M. Johnson, Pouch Cove.  
 Rev. T. G. Netten, Petty Harbor.  
 Rev. \_\_\_\_\_, Foxtrap.  
 Rev. \_\_\_\_\_, Topsail.  
 Rev. William Pilot, St. John's.  
 Rev. Cornelius Ellingham, Portugal Cove.  
 Rev. J. E. Phelps, Academy.  
 Rev. \_\_\_\_\_, Ferryland.

**DEANERY OF CONCEPTION BAY.**

*Rural Dean*—Rev. James C. Harvey.

Rev. T. Noel, Harbor Grace.  
 Rev. S. M. Wren, Harbor Grace.  
 Rev. John Godden, Harbor Grace and Bryants Cove.  
 Rev. William J. Hoyles, Carbonear.  
 Rev. J. Harvey, Port-de-Grave.  
 Rev. Robert H. Taylor, Brigus.  
 Rev. W. C. Shears, Bay Roberts.  
 Rev. A. C. J. Warren, Upper Island Cove.  
 Rev. G. S. Chamberlain, Bay-de-Verds.

**DEANERY OF TRINITY BAY.**

*Rural Dean*—Rev. B. Smith.

Rev. B. Smith, Trinity, North Side.  
 Rev. H. Danfield, Trinity.  
 Rev. Henry Petley, M.A., New Harbor.  
 Rev. George Gardner, Heart's Content.  
 Rev. William Netten, Catalina.

**DEANERY OF BONAVISTA BAY.**

*Rural Dean*—Rev. A. E. C. Bayly.

Rev. A. E. C. Bayly, Bonavista.  
 Rev. William Kirby, King's Cove.  
 Rev. H. M. Skinner, Salvage.  
 Rev. John G. Cragg, Greenspond.

**DEANERY OF NOTRE-DAME.**

*Rural Dean*—\_\_\_\_\_.

Rev. T. P. Massiah, Twillingate.

SHIPS PAINTING done at the shortest notice by J. W. COLLIER, 6, Victoria Street.

J. W. COLLIER keeps the best assortment of Bedroom, Hall and Room Paper.

Rev. Alfred Winsor, Herring Neck.  
Rev. Christopher Meek, Foyle.  
Rev. Robert Temple, Peets Cove.  
Rev. Walter Shann, Pitt Cove  
Rev. John Hewitt, Exploit, Burnt Island.

DEANERY OF PLACENTIA BAY.

*Rural Dean*— — — — —.

Rev. J. Kingwell, Harbor Buffett.  
Rev. J. Lockward, Burin.  
Rev. Josiah Darrell, Lamaline.

DEANERY OF FORTUNE BAY.

*Rural Dean*—Rev. W. K. White.

Rev. W. K. White, Harbor Briton.  
Rev. E. Colley, Hermitage Cove.  
Rev. J. Cunningham, Bargeo.  
Rev. Frederick Skinner, LaPelle.  
Rev. C. Jeffrey, St. George's Bay.  
Rev. J. Curling, Bay of Islands.  
Rev. John Bishop, Belloram.  
Rev. T. A. Goode, Chanel.  
Rev. A. C. Waghorne, St. Pierre.

LABRADOR.

Rev. George Bishop, Battle Harbor.  
Rev. Wm. Howe, Forteau and Flowers Cove.

RETIRED CLERGYMAN.

Rev. Thomas Boone, late Rural Dean, Notre Dame Bay.

THEOLOGICAL COLLEGE.

*Visitor*—The Lord Bishop.

*Council*—The Lord Bishop and the Revds. T. M. Wood, E. Botwood, J. F. Phelps.

*Principal*— — — — —.

*Vice-Principal*—Rev. Ambrose Heygate, B.A.

*Students*—F. J. J. Smith, Theodore Nurse, W. Howe, William Haynes, — Payne.

DIOCESAN SYNOD OF NEWFOUNDLAND.

President, Right Rev. the Lord Bishop. Clerical Secretary, Rev. J. F. Phelps. Lay Secretary, G. T. Rendell. Treasurers, Henry Cooke. Auditors, Rev. W. Pilot, John Goodridge.

*Executive Committee*—The Lord Bishop of Newfoundland and Revds. T. M. Wood, E. Botwood, Joseph F. Phelps, Arthur C. F. Wood, Wm. Pilot and Ven. A. W. Harvey, G. T. Rendell, Chas. Crowley, R. J. Piment, Hon. W. V. Whiteway, E. Duder.

W  
De  
A  
I  
I  
I  
Rev  
I  
N. I  
F  
F  
T  
St  
John  
G  
B  
L  
St  
B  
O  
St  
L  
H  
St  
St  
Rev  
C  
B  
St  
vent  
Mer  
T  
W  
B

## ROMAN CATHOLIC CHURCH.

- Bishop*—Right Rev. Dr. THOMAS JOSEPH FOWER.  
*Vicar General*—Very Rev. THOMAS O'CONNOR, P.P.  
*Dean*—Very Rev. PATRICK CLEARY, P.P.  
*St. John's (Cathedral)*—Very Rev. T. B. McGrath, Adm., Rev. W. Forristal, Rev. Patrick Delaney.  
*St. Bonaventure College*—President, Very Rev. P. A. Stattery, Dean, Rev. Wm. Fitzpatrick, Rev. James Fitzgerald.  
*St. Peter's Chapel (Queen Street)*—Rev. John Scott.  
*St. Patrick's (River Head)*—Rev. John Ryan.  
*Petty Harbor*—Rev. John Walsh.  
*Belle Isle*—Rev. Richard Dunphy.  
*Topsail*—Rev. Laurence Verker.  
*Portugal Cove and Torbay*—Very Rev. T. O'Connor, P.P., V.G., Rev. M. J. Clarke.  
*Witless Bay and Bay Bulls*—Very Rev. Dean Cleary, P.P., Rev. N. Roach, Rev. M. O'Driscoll.  
*Ferryland and Cope Broyle*—Rev. M. A. Clancy.  
*Fermeuse and Renewes*—Rev. John Walsh.  
*Trepassey*—Rev. Thomas Hennebury, P.P.  
*St. Mary's and Salmonier*—Rev. Richard O'Donnell, P.P., Rev. John St. John.  
*Great Placentia*—Rev. Charles Irvine.  
*Branch (Great Placentia)*—Rev. James Whelan.  
*Little Placentia*—Rev. R. Brennan.  
*St. Kyran's*—Rev. W. Doughty.  
*Burin*—Rev. William Born, P.P.  
*Oderin*—Rev. M. Morris.  
*St. Lawrence*—Rev. V. Reardon.  
*Lumaline*—Rev. M. MacCullow.  
*Harbor Briton*—Rev. M. F. Howley.  
*St. Jacques*—Rev. John Walsh.

## PREFECTURE APOSTOLIC.

- St. George's Bay*—Prefect Apostolic, Very Rev. T. Sears and Rev. Joseph Verenneau.  
*Cod Bay Valley*—Rev. Roderick McDonald.  
*Bay of Islands*— — — — —.

## CONVENTS.

- St. John's*—Presentation Convent, Military Road; Mercy Convent, Military Road; Presentation Convent, Patrick's Street; Mercy Convent, Belvidere.  
*Torbay*—Presentation Convent.  
*Witless Bay*—Presentation Convent.  
*Burin*—Mercy Convent.

Mixed Paints, Glass, Putty, Oil and Turpentine, always on hand by J. W. COLLIER.

- Ferryland*—Presentation Convent.
- Renews*—Presentation Convent.
- St. Lawrence*—Mercy Convent.
- Great Placentia*—Presentation Convent.
- St. Mary's*—Presentation Convent.
- Harbor Tilted*—Presentation Convent.
- An Orphanage for Girls at Belvidere; Orphan Asylum School, Cathedral Hill.

DIocese OF HARBOR GRACE.

The Right Rev. HENRY CARFAGNINI, D.D., O.S.F., Lord Bishop of Harbor Grace.

Very Rev. Jeremiah O'Donnell, Vicar General of the Diocese.

*Harbor Grace*—Very Rev. D. Falconio, Administrator; Rev. D. Melnes.

*Carbonar*—Rev. Stephen Flinn.

*Brigus*—Rev. E. E. Walsh, P.P.

*Harbor Main*—Rev. J. W. Donnelly.

*Conception Harbor*—Rev. P. O'Donnell.

*Northern Bay*—Rev. Wm. Hanley.

*Travista*—Rev. J. Carolan.

*King's Cove*—Rev. Wm. Veitch.

*Tilton Harbor*—Rev. James Brown, P.P.

*Fortune Harbor*—Attended from Tilton Harbor.

*Couche*—Attended from Tilton Harbor.

*Labrador*—Attended once a year by a Priest from Harbor Grace.

*Convents*—Three of the Presentation Order, and two of the Order of Mercy.

METHODIST CHURCH.

Rev. JAMES DOVE, President of Conference.

Rev. JOHN GOODISON, Secretary.

ST. JOHN'S DISTRICT.

*St. John's*—Rev. Thomas Harris, Rev. S. B. Dunn, Rev. John Pratt, Rev. G. S. Milligan, M.A., Superintendent of Methodist Day Schools, Rev. Thomas Fox, Supernumerary.

*Bonaville*—Rev. John Reay.

*Twillingate*—Rev. William Swann.

*Basin*—Rev. Joseph Pascoe.

*Grand Bank and Fortune*—Rev. Solomon Matthews, Rev. Wm. Kendall.

*Petites*—Rev. Joseph Parkins.

*Channel*—Rev. Jabez Hill.

*Exploits*—Rev. James Alexander.

Green-pond—Rev. Charles Myers, Rev. William Wilson.  
 Musgrave Town—Rev. Alexander McGregor.  
 Musgrave Harbor—Rev. William B. Trate.  
 Fogo and Change Islands—Rev. Thomas W. Atkinson.  
 Herring Neck—Rev. William Jennings.  
 Moreton's Harbor—Rev. Anthony Hill.  
 Little Bay Islands—Rev. Robert Linnitt.  
 Tilt Cove, &c.—Rev. George J. Bond, B.A., Rev. — Ritchings.  
 St. Anthony—Rev. William B. Seecombe.  
 Flower Cove—Rev. Henry Lewis.  
 Bonne Bay, &c.—Rev. James Pincock.  
 Fortune Bay—  
 Flat Islands—Rev. — Peters.  
 Sound Island—Rev. Henry C. Hatcher.

## CARBONAR DISTRICT.

Carbonar—Rev. John Goodison, Rev. George Paine, Rev. — Story, Rev. J. S. Peach, Supernumerary.  
 Harbor Grace—Rev. James Dove, President of Conference.  
 Briggs—Rev. Charles Lusher, Rev. James B. Heel, Rev. W. E. Shenstone, Supernumerary.  
 Bay Roberts—Rev. Joseph Lister.  
 Black Head—Rev. Jeremiah Eubree, Rev. R. W. Freeman.  
 Island Cove—Rev. John G. Garrie.  
 Perlican—Rev. George H. Bryant.  
 Hants Harbor—Rev. Thomas H. James, Rev. David Gwilym.  
 Catalina—Rev. George E. Willey.  
 Port-de-Grave—Rev. George Bullen.  
 Trinity—Rev. Jesse Heyfield.  
 Shoal Harbor, &c.—Rev. Samuel Snowden, Rev. William H. Eddyvean.  
 Green's Harbor—Rev. James Nurse.  
 Loblador—Rev. George Payne.

## CHURCH OF SCOTLAND.

Rev. JAMES PATTERSON, St. Andrew's Church, St. John's.

## CONGREGATIONAL CHURCH.

Rev. THOMAS HALL, Queen's Road, Upper Harbor.  
 Rev. GEORGE HARRINGTON, Royal Harbor, Smith's Found.  
 Trinity Bay.  
 Rev. J. B. SHER, General Missionary.

## FREE PRESBYTERIAN CHURCH.

Rev. NORMAN FRANKY and Rev. SAMUEL FORBES, St. John's.  
 Rev. ALEXANDER ROSS, Harbor Grace.

None but first class Workmen employed by J. W. Collier and satisfaction warranted.

LAYMEN LICENSED TO CELEBRATE MARRIAGE.

Charles Harris, Gooseberry Island.  
George Goodridge, Labrador.

St. John's and Newfoundland Auxiliary Bible Society.

His Excellency the Governor, Patron. Hon. Stephen Rendell, President. Hon. John Winter, Hon. Peter G. Tessier, William Boyd, James Goodfellow, Hon. James J. Rogerson, Vice-Presidents. Robert Brown, Treasurer. Rev. M. Harvey and John McDougall, Secretaries. Committee—Rev. Thomas Ball, Rev. G. S. Milligan, M.A., Rev. Thomas Harris, Rev. Simon B. Dunn, Rev. John Pratt, Rev. James Patterson, Hon. Robert Thorburn, Hon. Edward White, Edward L. Jarvis, Charles R. Ayre, John Woods, Richard Neve, Allan Goodridge, David Selater, Gilbert Browning, James Baird, Thomas W. Stabb, James Howe, Jabez N. Finlay, Lionel T. Chumcey, John Steer, John McCauley, J. F. Chisholm.

Chamber of Commerce, St. John's.

Walter B. Grieve, President. Edwin Duder and Hon. Stephen Rendell, Vice-Presidents. James Goodfellow, Secretary and Treasurer. Hon. P. G. Tessier, Hon. Robert Thorburn, Hon. A. W. Harvey, Thomas R. Smith, J. T. Adam, W. H. Mare, Thos. W. Stabb, Charles Bowring, R. H. Prowse.

BANKS.

UNION BANK OF NEWFOUNDLAND.

Directors—Hon. R. Thorburn, Hon. A. W. Harvey, John Mann, Walter B. Grieve, J. Adam.  
John W. Smith, Manager. C. S. Pinsent, Accountant. James T. Smith, Teller. Prescott N. Bailey and William H. Crowley, Clerks. Robert J. Pinsent, Q.C., standing Counsel and Solicitor.  
Discount Days—Mondays and Thursdays, from 12½ o'clock.  
Hours of Business—From 10 a.m. to 3 p.m.

COMMERCIAL BANK OF NEWFOUNDLAND.

Directors—Hon. Stephen Rendell, Charles Bowring, James Goodridge, Edwin Duder, Hon. John Winter.  
Robert Brown, Manager. Henry Cooke, Accountant and Teller. John W. Hayward, Henry D. Carter and George W. Duder, Clerks. Hon. F. B. T. Carter, Q.C., standing Counsel and Solicitor.  
Discount Days—Tuesdays and Fridays, from 12½ to 1½.  
Hours of Business from 10 a.m. to 3 p.m.

f  
M  
b  
P  
G  
H  
  
ris  
Ty  
G  
Ph  
Fr  
I  
H.  
T.  
C  
I  
I  
U  
four  
Har  
Sw  
New  
  
A  
Co  
Co  
prev  
M  
Satur  
Ne  
Ne  
Ph  
Pa  
Ro  
W  
St  
Th  
Te  
mont  
  
Horse  
Pigs  
Oxen

**Foreign Consulates.**

Portugal—Charles Fox Bennett, Consul-General for Newfoundland. Vice-Consul—Thomas R. Smith, St. John's; John Muun, Harbor Grace; William Juot, Burin; H. T. Holman, Harbor Breton and Gaultois; Gilbert Humphrey Cole, Trinity; Philip John Grouchy, LaPoile; Charles Middleton, Burgeo; George Messervy, Jersey Harbor; Thomas D. Boarcier, Little Harbor.

Spain—Don Salvador Rizzo, Vice-Consul, St. John's; T. Harrison Ridley, Harbor Grace. Consular Agents—John E. Duder, Twillingate; ———, Greenspond; Dr. Hay Findlater, Fogo; Gilbert Humphrey Cole, Trinity; Philip Sorsoliel, Rose Blanche; Philip Hubert, Harbor Breton; Henry F. Holman, Gaultois; Francis Bertean, Burin.

Brazil—Vice-Consul, Francis Winton. Consular Agents—W. H. Thompson, Conception Bay. Thomas Winter, Burin. Henry T. Holman, Harbor Breton.

German Empire—Robert H. Prowse, Consul, St. John's.

France—A. Jacquemin, Consul for Newfoundland.

Italy—Henry J. Stabb, Consular Agent for Newfoundland.

United States of America—Thomas N. Molloy, Consul for Newfoundland. Vice-Consul, Thomas J. Hearn. Consular Agent, Harbor Grace—P. Devereux.

Sweden and Norway—Robert H. Prowse, Vice-Consul for Newfoundland.

**Newspapers Published in the Colony.**

*Advocate*—Published every Wednesday and Saturday morning.

*Courier*—Published every Wednesday and Saturday morning.

*Commercial Journal*—Published every fortnight, immediately previous to the closing of the Mail per Halifax steamer.

*Morning Chronicle*—Published every Tuesday, Thursday and Saturday morning,

*Newfoundlander*—Published every Tuesday and Friday morning

*North Star*—Published every Saturday morning.

*Public Ledger*—Published every Tuesday and Friday morning.

*Patriot*—Published every Monday afternoon.

*Royal Gazette*—Published every Tuesday afternoon.

*Weekly Chronicle*—Published every Friday morning.

*Standard (Harbor Grace)*—Published every Saturday morning.

*Times*—Published every Wednesday and Saturday morning.

*Temperance Journal*—Published on the 1st and 15th of every month.

**Newfoundland Tariff,**

*According to Revenue Act, passed 1876.*

Horses, Mares, &c., each	-	-	-	-	-	-	-	\$2 30
Pigs and Calves	-	-	-	-	-	-	-	0 23
Oxen and Cows, the \$100	-	-	-	-	-	-	-	3 00

J. W. COLLIER keeps the best Stock of Bordering and Moulding, 6, Victoria Street.

...

ible

endell,  
William  
-Presi-  
d John  
d John  
ll, Rev.  
B. Daun,  
arborn.  
re, John  
Gilbert  
e, Jabez  
ey, J. F.

Stephen  
ary and  
Hon. A.  
are, Thos.

ohn Munn,

at. James  
I. Crowley,  
d Solicitor.  
Clock.

ing, James

stantant and  
George W.  
ing Counsel

to 14.



Ale, Porter, Cider and Perry, the gallon	- - - -	\$0 10
Apples, the barrel	- - - -	0 30
Bacon, Hams, Tongues, Smoked Beef and Sausages, the cwt.	- - - -	2 00
Beef and Pigs' Heads, salted and cured, the brl. of 200 lbs.	- - - -	0 60
Biscuit or Bread, the cwt.	- - - -	0 07
Sweet or Fancy Biscuits and Crackers, the \$100	- - - -	13 00
Butter, the cwt.	- - - -	1 12
Cheese, the cwt.	- - - -	1 50
Chocolate and Cocoa, the lb.	- - - -	0 04
Cigars, 5 per cent. <i>ad valorem</i> and the M.	- - - -	2 64
Coffe, the lb.	- - - -	00 3
Coal, imported or brought into the port of St. John's, the ton	- - - -	0 25
Confectionary, the cwt.	- - - -	3 50
Feathers and Feather Beds, the lb.	- - - -	0 05
Fish--salted, dried and pickled, the cwt.	- - - -	1 32
Flour, the barrel	- - - -	0 20
Fruit--dried, the lb.	- - - -	0 04
" Other descriptions, (except Apples) the \$100	- - - -	5 00
Lumber, the M	- - - -	1 00
Molasses, the gallon	- - - -	0 06
Oatmeal, the barrel	- - - -	0 20
Indian Meal and Pease, the barrel	- - - -	0 15
Pork, the barrel of 200 lbs.	- - - -	1 00
Salt, the ton	- - - -	0 20
Shingles, the M.	- - - -	0 40
Shooks and Staves (manufactured and dressed) the \$100	- - - -	20 00
Spirits, viz :--Brandy or other Spirits, not herein defined or enumerated, and not exceeding the strength of proof by Syke's Hydrometer, and so in proportion for any greater strength than the strength of proof, the gallon	- - - -	1 60
All other Spirits, of greater strength than forty-three over proof, shall be deemed to be undefined Spirits, and shall be subject to duty accordingly	- - - -	- - - -
Rum, not exceeding the strength of proof by Sykes's Hydrometer, and so in proportion for any greater strength than the strength of proof, the gallon	- - - -	1 00
Gin, not exceeding the strength of proof by Sykes's Hydrometer, and so in proportion for any greater strength than the strength of proof, the gallon	- - - -	1 20
Whiskey, not exceeding the strength of proof by Sykes's Hydrometer, and so in proportion for any greater strength than the strength of proof, the gallon	- - - -	1 50
Cordials, Shrub and other Spirits, being sweetened or mixed, so that the degree of strength cannot be ascertained as aforesaid, the gallon	- - - -	0 80
Sugar--Loaf and refined, the cwt.	- - - -	3 50
" Unrefined, the cwt.	- - - -	2 00
" Bastard, the cwt.	- - - -	2 50
Tea--Souchong, Congou and Bohea, the lb.	- - - -	0 05
Tobacco--Manufactured, the lb.	- - - -	0 12
" Leaf, the lb.	- - - -	0 07
" Stems, the cwt.	- - - -	0 50

SHIPS PAINTING done at the shortest notice by J. W. COLLIER, 6, Victoria Street.

- \$0 10  
 - 0 30  
 cwt. 2 00  
 lbs. 0 60  
 - 0 07  
 - 13 00  
 - 1 12  
 - 1 50  
 - 0 04  
 - 2 64  
 - 00 3  
 the  
 - 0 25  
 - 3 50  
 - 0 05  
 - 1 32  
 - 0 20  
 - 0 04  
 - 5 00  
 - 1 00  
 - 0 06  
 - 0 20  
 - 0 15  
 - 1 00  
 - 0 20  
 - 0 40  
 e \$100 20 00  
 defined  
 gth of  
 ion for  
 of, the  
 - 1 60  
 ee over  
 s, and  
 -  
 s's Hy-  
 renth  
 - 1 00  
 s's Hy-  
 greater  
 - 1 20  
 Sykes's  
 greater  
 - 1 50  
 ned or  
 e ascer-  
 - 0 80  
 - 3 50  
 - 2 00  
 - 2 50  
 - 0 05  
 - 0 12  
 - 0 07  
 - 0 50

Timber, the ton	- - - - -	0 30
Vinegar, the gallon	- - - - -	0 10
Wines, viz:—Champagne, the gallon	- - - - -	2 00
Port and Madeira, the gallon	- - - - -	1 50
Sherry and Manzanilla, 12½ per cent. <i>ad valorem</i> , and the gallon	- - - - -	0 90
Spanish Red, Denia, Sicilian, Figueira, Red Lisbon, Common, Cape and Malaga, the gallon	- - - - -	0 60
Claret, the gallon	- - - - -	0 60
Hock, Burgundy and Light Rhemish Wine, the gallon	- - - - -	0 60
All other wines, 12½ per cent. <i>ad valorem</i> , and the gallon	- - - - -	0 80
Ready-made Clothes, viz:—Coats, Jackets, Trowsers, Waistcoats and Southwesters, the \$100	- - - - -	20 00
Stockings, Shirts and Drawers (made by hand and not woven) the \$100	- - - - -	20 00
Mantles, Dresses, Cloaks, Sacks, the \$100	- - - - -	20 00
Candles, the \$100	- - - - -	20 00
Manufactures of Wood, (except Cabinet Wares, Musical Instruments and Agricultural Implements) the \$100	- - - - -	20 00
Empty Casks of all kinds, not containing Merchandize—including Fish Boxes and returned Casks, the \$100	- - - - -	20 00
Packages in which Dry Goods are imported, the \$100	- - - - -	13 00
Fresh Meat and Poultry, the \$100	- - - - -	5 00
Anchors and Chain Cables, Copper and Composition Metal for Ships, viz:—Bar, Bolt and Sheathing; Nails, Iron, viz:—Bar, Bolt, Sheathing, and Sheet; Wrought Nails; Cordage and Hemp Cables; Oakum; Canvass; Corks and Corkwood; Pitch; Pitch, Tar, Resin, Raw Turpentine; Fishing Tackle, Masts and Spars; Sheet Tin and Solder; Machinery and parts of Machinery, imported for the use of Foundries, Factories, Mills, or other purposes; Staves, undressed; Oats, Rice, Indian Corn, Bran, Barley, Medicines, the \$100	- - - - -	8 00
Goods, Wares and Merchandize, not otherwise enumerated, described or charged with duty in this Act, and not otherwise exempt, the \$100	- - - - -	13 00

LOCAL DISTILLATION.

Brandy, not exceeding the strength of proof by Sykes's Hydrometer, and so in proportion for any greater strength than the strength of proof, the gallon	- - - - -	1 20
Gin, not exceeding the strength of proof by Sykes's Hydrometer, and so in proportion for any greater strength than the strength of proof, the gallon	- - - - -	1 00
Whiskey, not exceeding the strength of proof by Sykes's Hydrometer, and so in proportion for any greater strength than the strength of proof, the gallon	- - - - -	1 00
Rum, not exceeding the strength of proof by Sykes's Hydrometer, and so in proportion for any greater strength than the strength of proof, the gallon	- - - - -	0 75

TABLE OF EXEMPTIONS.

Printing Presses, Printing Paper, (Royal and Demy) Printing Types and all other Printing Materials

- Printed Books and Pamphlets, Maps and Charts
- Coin and Bullion, Hemp, Flax, Tow
- Fresh Fish, Bait
- Wheat, Eggs
- Plants, Trees, Shrubs
- Unmanufactured Wool and Raw Cotton
- Specimens illustrative of Natural History
- Works of Art—viz, Engravings, Paintings and Statuary intended for sale
- Articles imported for religious purposes and not intended for sale
- Manure of all kinds
- Agricultural Implements and Machinery imported by Agricultural Societies, for the promotion of Agriculture
- Arms, Cloth and Provisions for Her Majesty's Land and Sea Forces
- Passengers' Baggage, Household Furniture, and Working Tools, and implements, used and in the use of persons arriving in the Island
- Refuse Rice, Seeds for Agricultural purposes
- Vegetables of all sorts
- Hides and pieces of Hides, not tanned, curried or dressed
- Coals (when not imported or brought into the Port of St. John's)
- Articles of every description imported for the use of the Governor
- Donations of Clothing specially imported for distribution gratuitously by any Charitable Society
- Cotton Yarn
- Pig Iron, Coke
- Bark for Tanning Leather
- Sulphuric Acid when used for the manufacture of Manure
- Twines, to be used in manufacturing nets in this Colony
- Dye Stuffs
- Junk, Old Iron, Old Copper and Composition-metal
- Articles for the official use of Foreign Consuls
- Steam Engines, Boilers, Propellers, Water-wheels, and Saws, when used in the original construction of Steam Boats built in this Island, Mills or Factories, also Crushing Mills for Mining purposes
- Philosophical Instruments and apparatus, including Globes, when imported and for the use of Colleges and Schools, Scientific or Literary Societies
- Materials for sheathing the bottoms of Vessels, such as Zinc, Copper and Composition-metal, together with nails, Paper or Felt, which may be used under the same
- Live Sheep, Sand, Wollen Yarn, and Corn for the manufacture of Brooms

It shall not be lawful for any Importer of dried Fish to Warehouse the same in any of the Ports in this Colony or its Dependencies, without the payment of the duty hereinbefore imposed; and the provisions of any Act of this Colony with regard to the Warehousing of Goods on the first entry thereof, or to the allowance of drawbacks upon exportation, shall not in either case apply to or be construed to apply to such fish: Provided, that

the section shall not apply to such fish of British catch and cure, unless otherwise declared by Proclamation of the Governor, published in the *Royal Gazette*.

All Yachts sailing under Warrant of the Lords of the Admiralty, or belonging to the Royal Yacht Club, shall be exempted on view of the said Warrant, from payment of all local Duties whatsoever.

---

### Harbor Dues.

The following amounts, as Harbor Dues, shall be paid by Vessels arriving at the Port of St. John's, at the time of their being entered at the Custom House, except Ships of War and Vessels engaged in the Coasting trade and Fishing, viz. :

Every vessel of Sixty tons and upwards, and not more than One Hundred tons, \$2.

Every vessel of more than One Hundred tons, and not more than Two Hundred tons, \$3.

Every vessel of more than Two Hundred tons, and not more than Three Hundred tons, \$4.

Every vessel of more than Three Hundred tons, and not more than Four Hundred tons, \$5.

Every vessel of more than Four Hundred tons, \$6.

Provided, that no vessel shall be compelled to pay Harbor Dues more than once in every half-year, viz. : Once between the First day of January and Thirtieth day of June, and once between the Thirtieth day of June and First day of January.

---

### Appendix.

The following notifications and appointments have been made since the foregoing sheets went to press :

Josiah Gosse, to be a member of the Road Board for Upper Island Cove and Bishop's Cove.

Richard D. Hodge and Matthew Hayward, to be members of the Road Board for Twillingate.

Rev. Wm. Doutney to be a member of the Road Board for St. Kyran's, Placentia West.

Dr. Forbes and James Milfen, in the room of Charles E. Thompson and Samuel Milfen, resigned, and Joseph Rolls, and Jos. Brown to be members of the Road Board for Bonavista.

Gideon Way, in room of Robert Strathie, and Wm. Greening, (Musgrave Town) and Richard Pitt, (Cannon's Cove) to be members of the Road Board for Musgrave Town, Bonavista Bay.

Mixed Paints, Glass, Putty, Oil and Turpentine, always on hand by J. W. COLLIER.

Plain and Ornamental Sign Painting by J. W. COLLIER, 6, Victoria St., St. John's, Nfld.  
**Abstract of Meteorological Observations taken at St. John's, Newfoundland.**

Latitude 47° 34' 30" North. Longitude 52° 29' 43" West. 150 feet above Mean Sea level.

1875.	Mean Height of Barometer cor.	Max. Height of Barometer cor.	Min. Height of Barometer cor.	Mean Max. Temperature.	Mean Min. Temperature.	Mean Temperature.	Mean Temp.	Max. Temp.	Min. Temp.	Depth of Snow Inches & faths.	Depth of Ice Inches & faths.	Prevailing Direction of Wind.	Mean of Month.	Absolute Max.	Absolute Min.	
January	29.739	30.710	28.778	23.2	10.6	21.4	33.0	-6.0	68.25	—	—	W. & S.W.	64	31.4	35°	27th -6°
February	29.834	30.531	29.415	26.3	8.0	17.1	46.0	-16.0	48.25	—	—	N. & S.E.	58	20th 46°	10th -16°	
March	29.923	30.477	29.331	26.3	10.3	18.1	43.0	-7.0	23.0	—	—	N.E. & S.	66	17th 46°	10th -7°	
April	30.297	30.439	29.763	33.0	21.5	30.2	48.0	8.0	11.0	1.49	1.49	N.E. & E.	54	24th 48°	4th 8°	
May	29.963	30.423	29.573	42.2	30.6	36.6	67.0	19.0	—	—	—	4.07 S.W. & W.	74	29th 67°	1st 19°	
June	30.141	30.516	29.773	61.0	41.3	52.0	79.0	23.0	—	—	—	2.56 N.E. & S.W.	50	24th 79°	4th 23°	
July	30.936	30.490	29.776	65.1	46.9	56.0	78.0	29.0	—	—	—	3.05 S.W. & W.	59	14th & 16th 78° 5'	14th 53°	
August	30.169	30.245	29.767	67.7	49.6	58.0	80.0	38.5	—	—	—	3.06 N.W. & S.	55	28th 80°	26th 31° 5'	
September	29.880	30.416	29.360	59.1	40.3	49.7	73.0	34.0	—	—	—	3.1 S.W. & E.	58	4th 73°	29th 34°	
October	29.655	30.690	29.196	54.2	38.0	46.1	68.0	27.0	—	—	—	6.14 W. & S.E.	7.0	7th 68°	23rd 37°	
November	29.737	30.301	29.968	35.2	26.8	30.0	44.0	9.0	14.56	3.48	3.48	S.W. & W.	8.0	12th 44°	23th 9°	
December	29.701	30.678	28.071	29.4	16.3	23.5	38.5	-2.5	14.80	1.70	1.70	N.E. & S.E.	7.8	18th 38° 3'	21st -2.5	
	29.946	30.468	29.339	44.3	28.4	36.7	59.9	14.5	149.80	30.61	—	—	6.5	—	—	

JOHN DELANEY, P.M.G.

Adv  
Abs  
Boa  
Boa  
Boa  
Ban  
  
Barr  
Barr  
Calen  
  
Colon  
Court  
Comm  
Comm  
Comm  
Colon  
Chan  
Const  
Differ  
Depa  
Distri  
Eclips  
Execu  
Educa  
  
Relesi  
Fixed  
Finan  
Foreign  
  
Gaols  
  
Her M  
House  
Harbo



Inspectors of Weights and Measures	-	-	-	60
Judicial Department—comprising lists of Barristers and Attorneys of Supreme Court, Stipendiary Magistrates, Justices of the Peace, &c., &c.	-	-	-	57
Legislative Council	-	-	-	19
Light Houses and Lights	-	-	-	29
Medical Officer for Sick Seamen—Port of St. John's	-	-	-	61
Newfoundland Wesleyan Academy	-	-	-	61
Notaries Public	-	-	-	58
Newspapers Published in the Colony	-	-	-	73
Post Office Department—including Postal Routes, Rates of Postage, and Post Office Directory for New'ld.	-	-	-	35
Preventive Officers	-	-	-	22
Queen's Printer	-	-	-	61
Royal Family of England	-	-	-	17
Revenue Department	-	-	-	21
Surveyor General's Department	-	-	-	22
Superintendent of Mercantile Marine	-	-	-	22
St. John's Hospital	-	-	-	29
St. John's Poor House	-	-	-	29
St. John's Lunatic Asylum	-	-	-	29
Stipendiary Magistrates	-	-	-	58
St. John's Academy	-	-	-	61
St. John's and Newfoundland Bible Society	-	-	-	72
Treasury Department	-	-	-	22
Tariff	-	-	-	73
Vice-Admiralty Court	-	-	-	57

- 60  
and  
gis-  
- 57  
- 19  
- 29  
- 61  
- 61  
- 58  
- 73  
ates  
fld.  
- 35  
- 22  
- 61  
- 17  
- 21  
- 22  
- 22  
- 29  
- 29  
- 29  
- 58  
- 61  
- 72  
- 22  
- 73  
- 57



