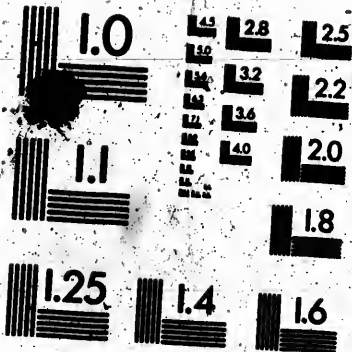


MICROCOPY RESOLUTION TEST CHART

(ANSI and ISO TEST CHART No. 2)



**APPLIED IMAGE Inc**

1853 East Main Street  
Rochester, New York 14609 USA  
(718) 482-0300 - Phone  
(718) 288-5089 - Fax

# CERTIFICATE OF

(Under Ont. Stat.,

UNITED COUNTIES OF LEEDS AND GRENVILLE

*Robert J. Oliver*  
the *village* of *Merrick*

no complaint respecting the list of Voters for said  
received by him within thirty days after the filing  
of the Clerk, I, *James Reynolds* the

Justice of the Peace for the County of Leeds and Grenville, in pursuance of the provisions of the Act in that behalf made, do hereby  
certify that the annexed printed List of Voters for the year 1896  
from the said Clerk, under Section 5 of the said Act, is a true and correct copy of the said List of Voters for the  
said Municipality for the year 1896

Given under my hand and seal at *Pro*  
day of *December* 1896

# OF NO COMPLAINT.

*Stat., 1889, Chap, 3.)*

OF LEEDS AND GRENVILLE.

*Brookville* Clerk of the Municipality of  
having certified under his hand that  
for said Municipality, for the year 189 had been  
the first posting up of the same; and on application

*the Junior*

Judge of the County Court of the United Counties  
the provisions of the "Ontario Voters' List Act, 1889,"  
Voters, being one of the copies received by me  
the said Act, is the Revised List of Voters for the

*Brookville*

89 6

this

*Sixteenth*

*Amos Reynolds*

Judge.

8

b



**CIHM  
Microfiche  
Series  
(Monographs)**

**ICMH  
Collection de  
microfiches  
(monographies)**



**Canadian Institute for Historical Microreproductions / Institut canadien de microreproductions historiques**

**© 1995**









# ::: VOTERS' LIST :::

— OF THE —

MUNICIPALITY OF THE

## Village of Merrickville,

FOR THE YEAR 1896.

4.—“The Sheriff shall, immediately upon receipt of his copies, cause one of them to be posted up in a conspicuous place in the Court House; the Clerk of the Peace, upon receipt of his copies, shall cause one of them to be posted in a conspicuous place in his office; every Public or Separate School Head Master or Mistress shall in like manner post up one of his or her copies on the door of the School House; and every Post Master shall post up one of his copies in his Post Office.”—37 V., c. 4, s. 3, sub-sec. 4, sec. 2, Act respecting Voters' Lists.



RECEIVED AND FILED, MERRICKVILLE :  
BROCKVILLE MIRROR PUBLISHING HOUSE.

1896.

*Dec 17/96*

**M. BROWN**

Technical and Bibliographic Notes / Notes techniques et bibliographiques

The Institute has attempted to obtain the best original copy available for filming. Features of this copy which may be bibliographically unique, which may alter any of the images in the reproduction, or which may significantly change the usual method of filming, are checked below.

L'Institut a microfilmé le meilleur exemplaire qu'il lui a été possible de se procurer. Les détails de cet exemplaire qui sont peut-être uniques du point de vue bibliographique, qui peuvent modifier une image reproduite, ou qui peuvent exiger une modification dans la méthode normale de filmage sont indiqués ci-dessous.

- Coloured covers/  
Couverture de couleur
- Covers damaged/  
Couverture endommagée
- Covers restored and/or laminated/  
Couverture restaurée et/ou pelliculée
- Cover title missing/  
Le titre de couverture manque
- Coloured maps/  
Cartes géographiques en couleur
- Coloured ink (i.e. other than blue or black)/  
Encre de couleur (i.e. autre que bleue ou noire)
- Coloured plates and/or illustrations/  
Planches et/ou illustrations en couleur
- Bound with other material/  
Relié avec d'autres documents
- Tight binding may cause shadows or distortion  
along interior margin/  
La reliure serrée peut causer de l'ombre ou de la  
distorsion le long de la marge intérieure
- Blank leaves added during restoration may appear  
within the text. Whenever possible, these have  
been omitted from filming/  
Il se peut que certaines pages blanches ajoutées  
lors d'une restauration apparaissent dans le texte,  
mais, lorsque cela était possible, ces pages n'ont  
pas été filmées.

- Coloured pages/  
Pages de couleur
- Pages damaged/  
Pages endommagées
- Pages restored and/or laminated/  
Pages restaurées et/ou pelliculées
- Pages discoloured, stained or foxed/  
Pages décolorées, tachetées ou piquées
- Pages detached/  
Pages détachées
- Showthrough/  
Transparence
- Quality of print varies/  
Qualité inégale de l'impression
- Continuous pagination/  
Pagination continue
- Includes index(es)/  
Comprend un (des) index

Title on header taken from: /  
Le titre de l'en-tête provient:

- Title page of issue/  
Page de titre de la livraison
- Caption of issue/  
Titre de départ de la livraison
- Masthead/  
Générique (périodiques) de la livraison

Additional comments: / **Pagination is unnumbered.**  
Commentaires supplémentaires: **Addenda sheets are affixed to inside the front cover.**

This item is filmed at the reduction ratio checked below /  
Ce document est filmé au taux de réduction indiqué ci-dessous.

10X	14X	18X	22X	26X	30X
<input type="checkbox"/>	<input type="checkbox"/>	<input type="checkbox"/>	<input checked="" type="checkbox"/>	<input type="checkbox"/>	<input type="checkbox"/>
12X	16X	20X	24X	28X	32X









1917

17	185	Blk 41		
18	52	Blk 59		
19	B & C	Blk 60		
20	41	Blk 61		
21	pt 2	our Eight and Drum		
22	0	2nd Range		
23	4	3rd Range		
24	40	4th Range		
25	pt 10	Rideau		
26	50	Blk 55		
27	pt 9	our Eight Drummond		
28	pt 25 south	Our A		
29	575	St. Lawrence		
30	122	Blk 60 Beach		
31	122	Montage		
32	50 57	Blk 2		
33	67	E Broadway		
34	pt 127	Main		
35	67	St. Lawrence		
36	pt 34	Main		
37	54	Blk 6		
38	56	Blk 50		
39	pt 2	Rideau		
40	58	3rd Range		
41	59	Rideau		
42	pt 86	Blk 58		
43	172	St. Lawrence		
44	2	St. Lawrence		
		Park Lot		





# VOTERS' LIST. 1896.



## MUNICIPALITY of MERRICKVILLE.

### SCHEDULE OF POST OFFICES.

- 1 Merrickville. 2 Kingston 3 Kemptville. 4 Easton's Corners. 5 Regina.  
6 Smith's Falls. 7 Cornwall. 8 Andrewsville. 9 Bishop's Mills. 10  
Ottawa. 11 Spencerville. 12 Ogdensburg. 13 Brockville.

polling Sub-Division No. 1, comprising the Village of Merrickville. County of Grenville.

### Part I. Persons entitled to vote at both municipal elections and elections to the Legislative Assembly.

No on Roll	Name	Jurors	Lot	Con. or Street	Description	P.O.
1	Atcheson, Alexander		26	Drummond	t, m f	1
2	Aston, Edward		163	St. Lawrence	oo, m f	1
3	Abrey, James		pt 142	St. Lawrence	o, m f	2
4	Allen, Alexander		pt 142	St. Lawrence	t, m f	1
7	Angus, James		real property	O. P. R., not roadway	oo, m f	1
8	Atchis, Alexander		40	cor St. John & Drummond	o, m f	1
10	Boyle, William		1st Range	over N. Silver's store	t, m f	1
14	Brislan, John		11 pt 12	3rd Range	o, m f	1
20	Buttinor, Thomas Sr.		100 121	Lewis and St. John	o, m f	1
21	Buttinor, Thomas Jr.		118 119	St. John and Colborne	t, m f	1
22	Blissell, Orenius		pt 10	Con B	o, m f	1
27	Bates, Samuel T		pt 26	St. Lawrence	t, m f	1
28	Bates, Edwin		pt 26	St. Lawrence	t, m f	1
29	Baker, Albert E		pt 142	St. Lawrence	t, m f	1
34	Barton, Joseph		66	St. Lawrence	o, m f	1
35	Buttinor, John		pt 85	St. Lawrence	t, m f	1
36	Burhill, John		124 123	St. Lawrence & Colborne	o, m f	1
45	Brennan, James		pt 7	3rd Range	t, m f	1
47	Bates, Philander W		pt 6	1st Range	t, m f	1
48	Brennan, James A		pt 6	3rd Range	o, m f	1
50	Burhill, Abraham		pt 12	4th Range	o, m f	1
49	Barton, Frederick		24	W Broadway	t, m f	1
54	Brislan, Edward		26	E Broadway	t, m f	1
25	Beatty, George		pt 10 27 28	Blk. 45	t, m f	1
67	Onick, Patrick		pt 14	1st Range	o, m f	1
68	Culbert, Thomas		pt 6	3rd Range	o, m f	1
72	Cochran, Dometria		50	cor. Lewis and St. John	o, m f	1
73	Crossett, Andrew T		110	Lewis	t, m f	1
76	Onick, William		11 23	Mont cor. W. Broadway	o, m f	1
77	Cave, William G		10	1st Range	t, m f	1
82	McCormack, Basil		77	Lewis	o, m f	1
83	McCormack, John T		125	St. Lawrence	o, m f	1



POLLING SUB-DIVISION No. 1.

No on Roll	Name	Jurors	Lot	Con. or Street	Description	P. O.
800	Merrick, William		28	West Broadway	o, m f	1
800	Montgomery, George	A pt 9		Con 8	o, m f	1
378	Menses, John	18		3rd Range	t, m f	1
107	Morrison, William J	pt 10		Chessa Factory	oc, m f	1
198	Moxley, George	j 45		St. Lawrence	o, m f	1
199	Nada, Edward	pt 15 10		William	t, m f	1
241	O'Donnell, Hugh	72 73 74 75 76		Drum., St. Patrick, Lewis	o, m f	1
242	O'Brien, Timothy	pt 80 89		Brook	o, m f	1
244	Olyer, Frauds	18		4th Range	t, m f	1
247	Putnam, Gordon R	14		4th Range	l, m, f	1
251	Postlethwaite, Joseph	89		St. John	o, m f	1
252	Postlethwaite, Josiah	Oj pt 6		3rd Range	t, m f	1
258	Putnam, Charles W	pt 26		St. Lawrence	o, m f	1
267	Postlethwaite, Chas W	111		Lewis	o, m f	1
268	Peoples, Robert	31		Brook	o, m f	1
268	Peaton, Daniel E			cor. St. Lawrence & Br'k.t.	m f	1
268	Payne, Josiah	9 pt 8		1st Range	o, m f	1
280	Perrin, William H	pt 8		4th Range	o, m t	1
9	Pecor, Charles	11		cor St. John & Drummond	t, m f	1
261	Phillips, John	9		Water St.	t, m f	1
274	Payce, Joseph	11		William	o, m f	1
286	Ross, William M	j 13 14 15		Main St	t, m f	1
290	Real, Daplel	pt 6		1st Range	t, m f	1
291	Real, Charles	over D. Real's store		1st Range	t, m f	1
296	Read, Alfred	pt 6		1st Range	t, m f	1
297	Read, Robert	pt 28		Brook	o, m f	1
298	Ryan, William	j pt 42		Drummond	t, m f	1
299	Reynolds, William	28		W Broadway	t, m f	1
806	Scott Robert E	pt 81		St. John	t, m f	1
97	Smith, Richard B	pt 6 9		Drummond	t, m f	1
810	Scott, William	pt 9		Water	o, m f	1
818	Sylva, Francis	14		Blk. 27	o, m f	1
125	Smith, David	89		Lewis	t, m f	1
815	Tero, Joseph	j 107 108		Lewis	o, m f	1
816	Tallman, Ferdinand	A 86		William	o, m f	1
818	Tuck, William			old school house	t, m f	1
821	Tresham, William	j 25		West Broadway	o, m f	1
822	Towle, Joseph	pt mill plot Store H			t, m f	1
828	Tallman, Ephraims	84		William	o, m f	1
209	Thompson, Robert	pt 8 9		Con A and B	oc, m f	1
824	Vancamp, Sterling	j pt 6 7		3rd Range	o, m f	1
825	Vanexan, John	pt 4 pt 5		Main Blk 86	o, m f	1
837	Whitmarsh Eleaser	H 10		1st Range	o, m f	1
432	Whitmarsh, George A	pt 9		Con 9	t, m f	1
640	Wylie, Adam	pt 28		Brook	o, m f	1
841	Walkley, Edwin	j 28		Blk. 27	o, m f	1
850	Walker, Robert	9 pt 8		1st Range	t, m f	1
848	Whitmore, Samuel	pt 20		William	t, m f	1

Name	Age	Residence	Description
John	12 14	1st Range	m f
John F	12 14	Montague	m f
John N	14 6	2nd Range	m f
John H	105	St. Lawrence	m f
William	11	William	m f
William	11	William	m f
William	11	1st Range	m f
John	12 14 18	Main St	m f
John	12 14 18	Main St	m f

**POLLING SUB-DIVISION No. 2**

comprising the Village of Morrisville, County of Granville.

**Part I. Persons entitled to Vote at both Municipal Elections and Elections for the Legislative Assembly.**

Name	Age	Residence	Description	P.O.
John	53	Elgin	o, m f	8
Robert	47 5	3rd Range	o, m f	1
George	48 4	1st 2nd Ranges	o, m f	1
John H	48 5	Broken front	o, m f	1
George	2	4th Range	t, m f	1
Henry	2	4th Range	o, m f	1
John	pt 5C south	St. Lawrence	o, m f	1
Samuel	48 55	St. Lawrence	t, m f	1
George	pt 1 2	Blk. 41	o, m f	1
John	48 120	St. Lawrence	o, m f	1
Thomas	120 220	Colborne	o, m f	1
Henry	91	Elgin	o, m f	1
William	pt 5	1st Range	t, m f	1
Henry	140	Colborne	o, m f	1
John H	47 5	Con A	o, m f	1
John	51	Elgin	t, m f	1
John	45	Eye	t, m f	1
John H	47 5	Con A	t, m f	1
John H	B and O	3rd Range	o, m f	1
John	5	Blk. 40	o, m f	1
John	55 58	Drummond	o, m f	1
John	51 61	Drummond	o, m f	1
John	51	Drummond	t, m f	1
John	40	Lewis	o, m f	1
John	44	Edouard	o, m f	1
John	45	Elgin	o, m f	1

Persons entitled to Vote at Elections to Legislative Assembly

No.	Name	Survey	Lot	Class or Grade	Description
13	Howard	pt 3 4		1st 2nd Ranges	m f
14	Reel, William	pt 3 4		1st 2nd Ranges	m f
21	Brewman, Thos	2		4th Range	m f
61	Church, John M	pt 7 8		Con A	m f
62	Church, Sanford	pt 7 8		Con A	m f
204	Doyle, Edward	3 4		Blk 56	m f
22	Devix, Cornelius	14		Blk 56	m f
23	Dunlop, John	5 6		Rideau	m f
22	Eagley, James	0		4th Range	m f
111	Forbes, Thomas			Main St	m f
194	Gomez, Mariano	102		Elgin	m f
195	Hill, William	pt 7		Con A	m f
157	Kelly, William J	pt 16		Blk 58	m f
159	Kelly, John	pt 16		Blk 58	m f
222	Kier, John	pt 16 pt 17		Blk 41	m f
173	Lisaco, Christopher	52		Rideau	m f
157	McLeod, Alexander	pt 126		St Lawrence	m f
209	McEwan, Dayid	5 6		Rideau	m f
271	Phillips, Wm	59		E Broadway	m f
206	Reel, Arthur	3 4		Blk 56	m f
54	Tallman, Wm J	52		cor Elgin and Drum.	m f
235	White, Aaron	12 15		Blk 59	m f

I, ROBERT J. OLIVER, Clerk of the Municipality of the Village of Merrickville, the County of Grenville, do hereby certify that parts 1 and 2 of the within list constitute a correct list for the year 1890, of all persons appearing by the last Revised Assessment Roll of the said Municipality, to be entitled to Vote at Elections for Members of Legislative Assembly; and that parts 1 and 2 constitute a correct list for said year, of all persons appearing by the said roll to be entitled to vote at Municipal Elections of the said Municipality; and I hereby call upon all electors to examine the said list, and any omissions or other errors are pointed therein, to take immediate proceedings to have the said errors corrected according to law.

Dated this 5th day of August, 1890.

ROBERT J. OLIVER,  
Clerk of the Municipality of Merrickville,  
Post Office, Merrickville.

POLLING SUB-DIVISION No. 1.

No on Roll	Name	Jurors	Lot	Cor. or Street	Description	P.O.
89	Edwards, Thomas		67	Drummond		
92	Easton, Hiram		12 16 14	Montague	o, m f	1
94	Easton, Roderick		Mill Plot	Dwelling house	o, m f	1
108	Kagley, William		pt 88	William	t, m f	1
108	Kagley, Robert		pt 88	William	o, m f	1
108	Everette, Milton		pt 10	Cheese Factory	o, m f	1
109	Edwards, Charles		42	Drummond	t, m f	4
198	Edwards, James H		46	St. Lawrence	o, m f	1
90	Krrett, Robert		148	Colborne	t, m f	1
207	Ferguson, Francis		pt 58	Drummond	t, m f	1
116	Gleason, James		8 Blk 86	Main	o, m f	1
117	Holden, Charles A		j pt 6 7	2nd Range	o, m f	1
128	Hall, David J		9	2nd Range	o, m f	1
196	Henry, Robert H		88	Lewis	o, m f	1
198	Hanlan, Jason		82	Lewis	t, m f	1
180	Hicks, John		j pt 10	3rd Range	t, m f	1
181	Jakes, Samuel		80	Con A	o, m f	1
189	James, John		j pt 80 89	Brook	o, m f	1
140	Johnston, John		pt 6	3rd Range	o, m f	1
141	Kerr, John		15 15	3rd 4th Ranges	o, m f	1
60	Keegan, John		24	West Broadway	o, m f	1
181	Knapp, John Jr		14 15	2nd Range	t, m f	1
185	Knapp, John Sr		29	West Broadway	o, m f	1
95	Kyle, Edward		15	1st Range	o, m f	1
142	Kempfler, James M		11	1st Range	o, m f	1
166	Linson, Francis D		j 8	Blk. 45 Montague	o, m f	1
170	Linson, William		pt 8	4th Range	o, m f	1
174	Loney, John R		pt 148	Colborne	t, m f	2
72	McIntyre, Henry		27	Brook	o, m f	1
177	McGill, Thomas		j 14	St. Patrick	o, m f	1
178	McGill, Patrick		j 44	St. Lawrence	o, m f	1
189	McCabe, John		18	William	o, m f	1
181	McDree, William H		pt 84	St. Lawrence	t, m f	1
183	McDonald, Alexander		79	St. John	o, m f	1
188	McCarthy, John		12 12	1st 2nd Ranges	o, m f	1
194	McKibben, Ambrose		pt 4	Brook	o, m f	1
197	Magos, Thomas		8 9	Park Lot Blk. 26	o, m f	1
208	Merrick, John A		10 11	4th Range	o, m f	1
211	Merrick, Terence		j 27 28 pt 10	Blk. 45	o, m f	1
212	McGill, Bernard		j 22	William	o, m f	1
218	McCabe, Patrick Jr		21	William	o, m f	1
216	McCabe, Patrick Sr		pt 19	William	o, m f	1
218	Mills, James		j 9	William	o, m f	1
219	Magos, James		9	4th Range	t, m f	1
220	McCrandle, Edward		pt 12	4th Range	o, m f	1
224	McCarzey, Edward		pt 18	4th Range	t, m f	1
225	Mills, Thomas		pt 6 7	3rd Range	t, m f	1
226	Merrick, Henry			Drummond	t, m f	1
227	Mills, John		70 71	between cut and M. pond	o, m f	2
227	Mills, Lincoln		j pt 29	Drummond	o, m f	1
				Brook	o, m f	1



The copy filmed here has been reproduced thanks to the generosity of:

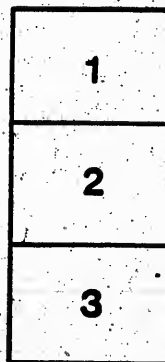
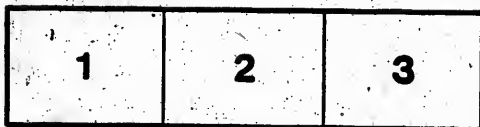
Archives of Ontario  
Toronto

The images appearing here are the best quality possible considering the condition and legibility of the original copy and in keeping with the filming contract specifications.

Original copies in printed paper covers are filmed beginning with the front cover and ending on the last page with a printed or illustrated impression, or the back cover when appropriate. All other original copies are filmed beginning on the first page with a printed or illustrated impression, and ending on the last page with a printed or illustrated impression.

The last recorded frame on each microfiche shall contain the symbol  $\rightarrow$  (meaning "CONTINUED"), or the symbol  $\nabla$  (meaning "END"), whichever applies.

Maps, plates, charts, etc., may be filmed at different reduction ratios. Those too large to be entirely included in one exposure are filmed beginning in the upper left hand corner, left to right and top to bottom, as many frames as required. The following diagrams illustrate the method:



L'exemplaire filmé fut reproduit grâce à la générosité de:

Archives of Ontario  
Toronto

Les images suivantes ont été reproduites avec le plus grand soin, compte tenu de la condition et de la netteté de l'exemplaire filmé, et en conformité avec les conditions du contrat de filmage.

Les exemplaires originaux dont la couverture en papier est imprimée sont filmés en commençant par le premier plat et en terminant soit par la dernière page qui comporte une empreinte d'impression ou d'illustration, soit par le second plat, selon le cas. Tous les autres exemplaires originaux sont filmés en commençant par la première page qui comporte une empreinte d'impression ou d'illustration et en terminant par la dernière page qui comporte une telle empreinte.

Un des symboles suivants apparaîtra sur la dernière image de chaque microfiche, selon le cas: le symbole  $\rightarrow$  signifie "A SUIVRE", le symbole  $\nabla$  signifie "FIN".

Les cartes, planches, tableaux, etc., peuvent être filmés à des taux de réduction différents. Lorsque le document est trop grand pour être reproduit en un seul cliché, il est filmé à partir de l'angle supérieur gauche, de gauche à droite, et de haut en bas, en prenant le nombre d'images nécessaire. Les diagrammes suivants illustrent la méthode.

