

**CIHM
Microfiche
Series
(Monographs)**

**ICMH
Collection de
microfiches
(monographies)**



Canadian Institute for Historical Microreproductions / Institut canadien de microreproductions historiques

© 1997

Technical and Bibliographic Notes / Notes techniques et bibliographiques

The Institute has attempted to obtain the best original copy available for filming. Features of this copy which may be bibliographically unique, which may alter any of the images in the reproduction, or which may significantly change the usual method of filming, are checked below.

L'Institut a microfilmé le meilleur exemplaire qu'il lui a été possible de se procurer. Les détails de cet exemplaire qui sont peut-être uniques du point de vue bibliographique, qui peuvent modifier une image reproduite, ou qui peuvent exiger une modification dans la méthode normale de filmage sont indiqués ci-dessous.

- Coloured covers/
Couverture de couleur
- Covers damaged/
Couverture endommagée
- Covers restored and/or laminated/
Couverture restaurée et/ou pelliculée
- Cover title missing/
Le titre de couverture manque
- Coloured maps/
Cartes géographiques en couleur
- Coloured ink (i.e. other than blue or black)/
Encre de couleur (i.e. autre que bleue ou noire)
- Coloured plates and/or illustrations/
Planches et/ou illustrations en couleur
- Bound with other material/
Relié avec d'autres documents
- Tight binding may cause shadows or distortion along interior margin/
La reliure serrée peut causer de l'ombre ou de la distorsion le long de la marge intérieure
- Blank leaves added during restoration may appear within the text. Whenever possible, these have been omitted from filming/
Il se peut que certaines pages blanches ajoutées lors d'une restauration apparaissent dans le texte, mais, lorsque cela était possible, ces pages n'ont pas été filmées.

- Coloured pages/
Pages de couleur
- Pages damaged/
Pages endommagées
- Pages restored and/or laminated/
Pages restaurées et/ou pelliculées
- Pages discoloured, stained or foxed/
Pages décolorées, tachetées ou piquées
- Pages detached/
Pages détachées
- Showthrough/
Transparence
- Quality of print varies/
Qualité inégale de l'impression
- Continuous pagination/
Pagination continue
- Includes index(es)/
Comprend un (des) index
- Title on header taken from: /
Le titre de l'en-tête provient:
- Title page of issue/
Page de titre de la livraison
- Caption of issue/
Titre de départ de la livraison
- Masthead/
Générique (périodiques) de la livraison

Additional comments: / Pagination is unnumbered.
Commentaires supplémentaires:

This item is filmed at the reduction ratio checked below/
Ce document est filmé au taux de réduction indiqué ci-dessous.

10X	14X	18X	22X	26X	30X
<input type="checkbox"/>	<input type="checkbox"/>	<input type="checkbox"/>	<input checked="" type="checkbox"/>	<input type="checkbox"/>	<input type="checkbox"/>
12X	16X	20X	24X	28X	32X

The copy filmed here has been reproduced thanks to the generosity of:

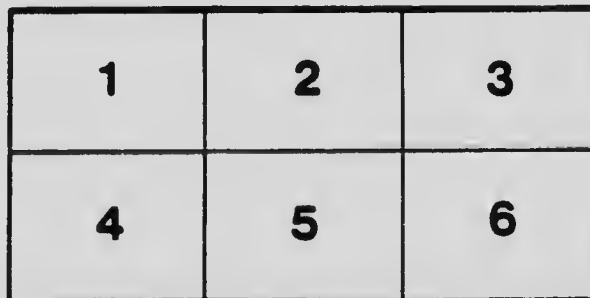
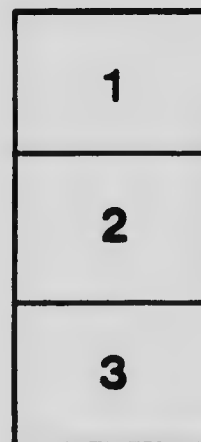
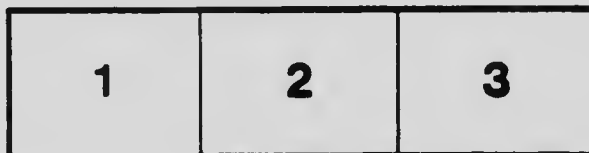
Archives of Ontario
Toronto

The images appearing here are the best quality possible considering the condition and legibility of the original copy and in keeping with the filming contract specifications.

Original copies in printed paper covers are filmed beginning with the front cover and ending on the last page with a printed or illustrated impression, or the back cover when appropriate. All other original copies are filmed beginning on the first page with a printed or illustrated impression, and ending on the last page with a printed or illustrated impression.

The last recorded frame on each microfiche sheet contains the symbol \rightarrow (meaning "CONTINUED"), or the symbol ∇ (meaning "END"), whichever applies.

Maps, plates, charts, etc., may be filmed at different reduction ratios. Those too large to be entirely included in one exposure are filmed beginning in the upper left hand corner, left to right and top to bottom, as many frames as required. The following diagrams illustrate the method:



L'exemplaire filmé fut reproduit grâce à la générosité de:

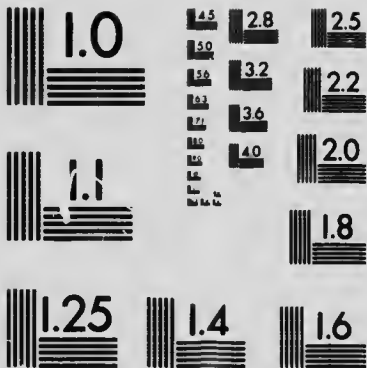
Archives publiques de l'Ontario
Toronto

Les images suivantes ont été reproduites avec le plus grand soin, compte tenu de la condition et de la netteté de l'exemplaire filmé, et en conformité avec les conditions du contrat de filmage.

Les exemplaires originaux dont la couverture en papier est imprimée sont filmés en commençant par le premier plat et en terminant soit par la dernière page qui comporte une empreinte d'impression ou d'illustration, soit par le second plat, selon le cas. Tous les autres exemplaires originaux sont filmés en commençant par la première page qui comporte une empreinte d'impression ou d'illustration et en terminant par la dernière page qui comporte une telle empreinte.

Un des symboles suivants apparaît sur la dernière image de chaque microfiche, selon le cas: le symbole \rightarrow signifie "A SUIVRE", le symbole ∇ signifie "FIN".

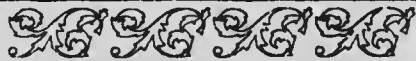
Les cartes, planches, tableaux, etc., peuvent être filmés à des taux de réduction différents. Lorsque le document est trop grand pour être reproduit en un seul cliché, il est filmé à partir de l'angle supérieur gauche, de gauche à droite, et de haut en bas, en prenant le nombre d'images nécessaire. Les diagrammes suivants illustrent la méthode.



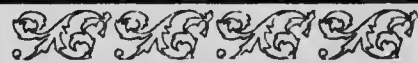
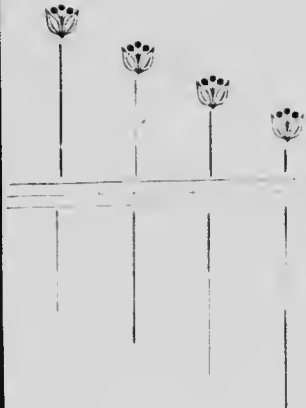
MICROCOPY RESOLUTION TEST CHART
NATIONAL BUREAU OF STANDARDS
STANDARD REFERENCE MATERIAL 1010a
(ANSI and ISO TEST CHART No. 2)

The Mineral Baths and Hotel Sanita

Operated by the Chatham
Mineral Water Company,
Limited, Chatham, Ontario,
Canada.



CHATHAM HANDED-NEWS PRINT.



SCALE OF PRICES.



A course of twenty-one
baths including any style of
bath..... \$10.00

Mineral Bath (single)..... .50

Turkish Bath "75

Mineral Vapor "75

Fee for Attendant, 25c.

J. M. McCOIG Esq.
Manager.



BOARD OF DIRECTORS.

• • •

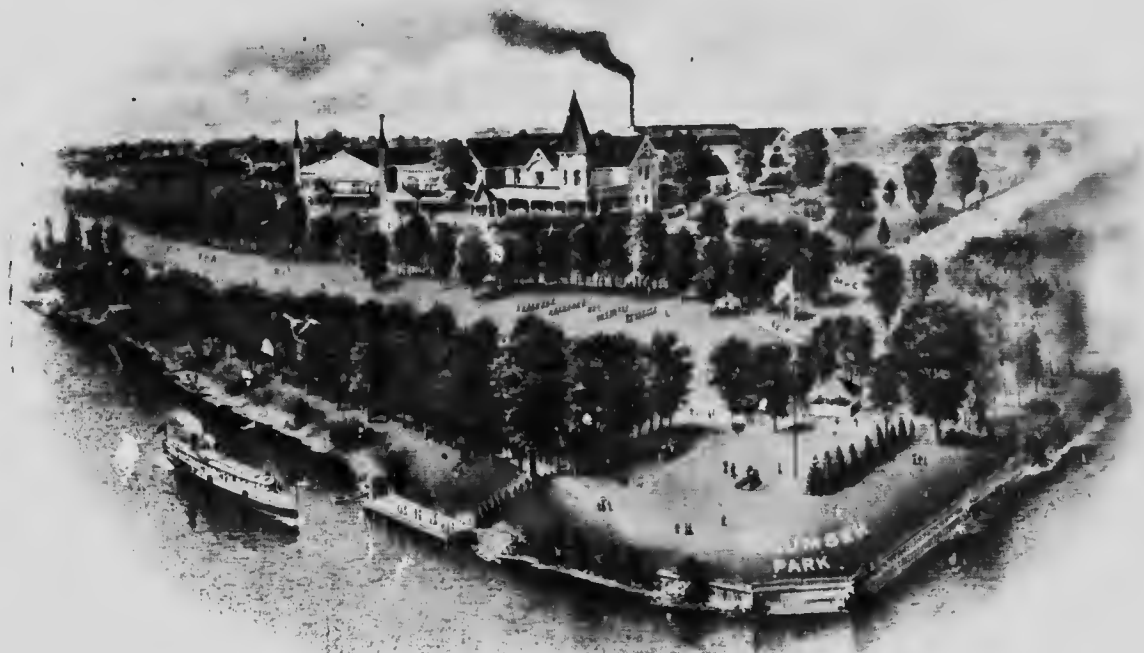
W. R. HALL Esq., M. D. PRESIDENT.

W. D. SHELDON Esq., Water Commissioner
VICE PRESIDENT.

W. W. SCANE Esq. Barrister at Law
SECRETARY.

CHAS. HADLEY Esq., Pres. S. Hadley Lumber Co.
TREASURER.

G. A. WITHERSPOON, Esq., M'n'g. Chemist
DIRECTOR.



BIRD'S EYE VIEW OF TECUMSEH PARK, BATH HOUSE AND HOTEL SANTA.

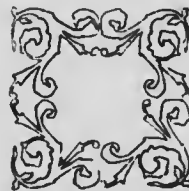
A SCIENTIST'S OPINION OF THE VALUE OF MINERAL WATER BATHS.



PROFESSOR LIEBREICH, the distinguished professor of Materia Medica and Pharmacology at the University of Berlin, and the discoverer of a number of extensively-used remedies, especially in the coal-tar series, in speaking of the unexpected in science, says that "our knowledge of the ingredients of remedial mineral waters, is certainly not nearly as complete as our knowledge of the air was supposed to be before the discovery of these new gases." He insists that the mystery of the difference in therapeutic effect between genuine natural mineral waters, taken at their source, and artificial preparations supposed to represent them completely, may very well be due to the fact that our analytical knowledge of the substance dissolved in the mineral waters is as yet incomplete.

The distinguished professor refers to the well-known fact that, up to the middle of the last century, scientists believed that their knowledge of the air they breathed was complete, but since then many other important gases have been dis-

covered to exist constantly in the air such as Argon, Helium, Neon, Crypton and Xenon. The water of the Chatham Mineral Springs, the analysis of which, as near as it is possible at present to show, contains ingredients in each gallon which, if compounded by a competent druggist, would cost \$1.40, and for a bath of 40 gallons would cost \$56.00. Yet as stated by Prof. Liebreich, the best authority in the world on the subject, it does not represent its full value, nor is it possible to substitute any combination of salts, gases, etc., at any price which would truly represent its therapeutic value.





MINERAL BATH HOUSE AND HOTEL SANTA (WINTER SCENE).

....THE WATER....

THE WATER with which the bath house is supplied and served was first discovered, many years ago, by a company in quest of salt. This company bored to a depth of over 1,000 feet.

While engaged in these operations oil was located at a depth of 100 feet, but the search for salt was not successful. For this reason the well was plugged at a depth of 150 feet and it was worked for a little time for oil. This, however, was not secured in paying quantities and the project was finally abandoned. Notwithstanding the plugging a small quantity of the mineral water continued oozing from the well, although somewhat contaminated by petroleum oil.

How the valuable curative properties of this water were first discovered is not definitely known. It is believed they were "happened upon" by the neighboring residents. However that may be, its fame spread very rapidly. Strange stories were told of the healing liquid as a panacea for all ills that the flesh is heir to. These legends were substantiated by many striking cures, and the water became exceedingly popular. Men and women

walked for miles to bathe themselves with it and barrels of it were conveyed away, the supply from the plugged well scarcely meeting the demand.

The unquestioned success of the water in banishing rheumatism and other bodily infirmities soon interested medical men and enterprising citizens, with the result that a scientific analysis was secured, which revealed the fact that a valuable well of efficacious and unsurpassed mineral water was at our doors.





VIEW IN TECUMSEH PARK.

ANALYSIS.

A. R. Pyne, M. B., Tor. Univ.,

M. C. P. & S., ONT.

Licentiat in Medicine, University, State of New York, Albany. Professor of Chemistry Women's Medical College, Toronto.

ANALYST, HEALTH OFFICE, TORONTO

DOMINION ANALYST - CONSULTING CHEMIST.

TORONTO, April 2nd, 1901.

Analysis of a sample of mineral water submitted by The Chatham Mineral Water Company, Limited.

Specific gravity at 60° Fah. 1.123.

In grains per Imperial Gallon

Magnesium Sulphate.....	370.110
Sodium "	331.110
Calcium "	20.120
Sodium Chloride.....	6120.200
Potassium "	8.100
Calcium "	3200.100
Iron Carbonate.....	2.500
Alumina (suspended).....	1.110
Silica.....	1.070
Sulphur, free.....	.200
Bromides and Iodides.....	Traces

10115.610

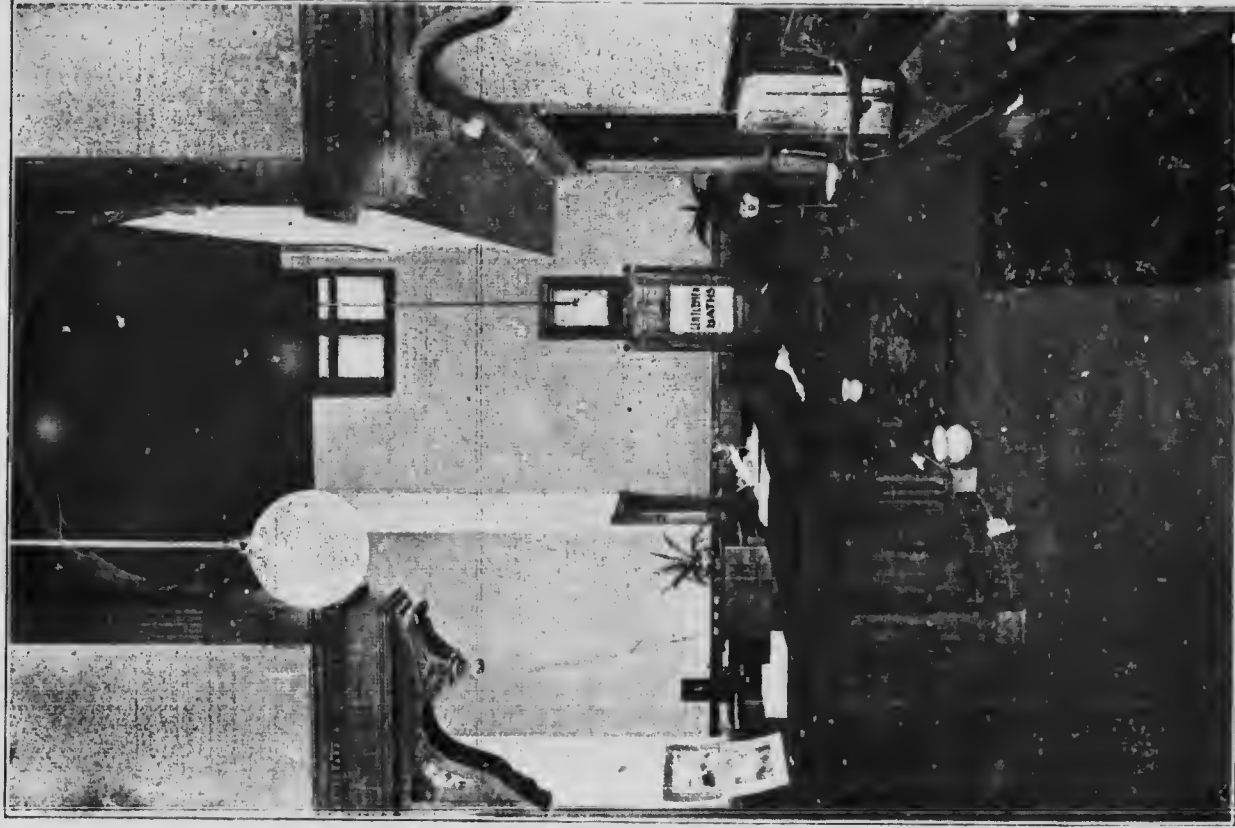
Water contains an undetermined quantity of carbonic acid, and is saturated with hydrogen sulphide.

THERAPEUTIC PROPERTIES: This water is a strong sulpho-saline one and in my opinion should prove very valuable as a cathartic and alterative when properly diluted and should prove very efficacious in chronic skin diseases and rheumatic troubles.

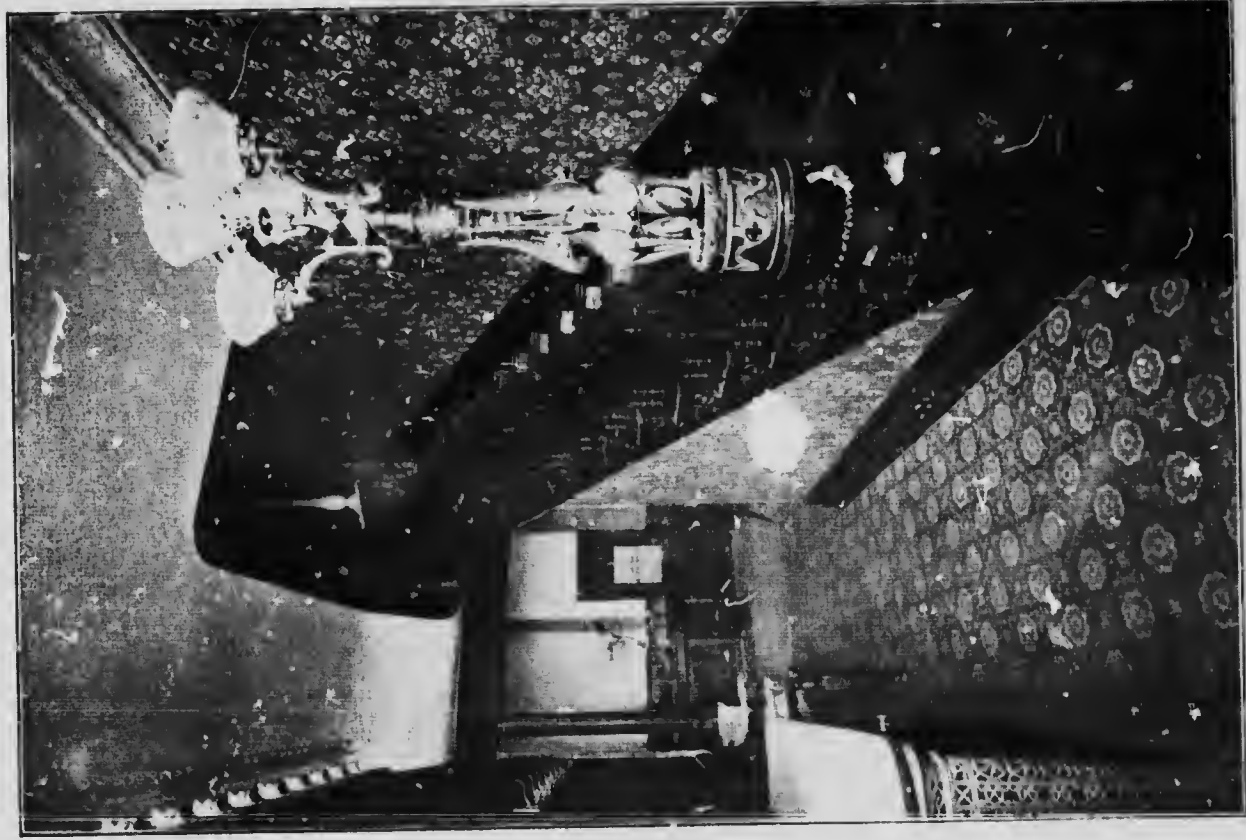
A. R. PYNE, M. B., Dominion Analyst.



VIEW OF ONE SECTION OF THE PLAZZA.



A VIEW OF THE OFFICE.



STAIR CASE AND CORRIDOR.

WHAT THE WATER WILL CURE.

RHEUMATIC affections, embracing inflammatory and chronic rheumatism, stiffened joints, sciatica, lumbago and all forms of muscular rheumatism and gout.

Skin diseases such as eczema, salt-rheum, psoriasis, erysipelas, blood poisoning in all forms, including lead and mercurial poisoning, paralysis, locomotor-ataxia, epilepsy, neuralgia, insomnias, hysteria, alcoholism, St. Vitus Dance, etc.

scrofula in all forms, biliousness and liver troubles, stomach troubles in all forms, constipation, sick headaches, etc.

Female diseases, leucorrhœa, dysmenorrhœa (painful menstruation), amenorrhœa (suppressed menses), general debility, nervous prostration, protracted convalescence following exhausting diseases, catarrhal difficulties, catarrh of the bladder, etc.

HOTEL SANITA AND BATH HOUSE.

IN ADDITION to operating the well as before mentioned, the syndicate resolved to erect a bath house and sanitarium that in point of equipment should be second to no other. Choosing as their site a plot overlooking the historic Tecumseh Park, they erected the Bath House and Hotel Sanita, a cut of which appears on page 5. No expense was spared to make the institution the best of its kind on the continent and all modern appliances for administering mineral, peat, vapor, Turkish and other baths are in evidence. The bathing capacity is 200 people per day. The attendants, both male and female, are experienced and trustworthy, and well trained in all modern

methods of bathing. As will be seen from the picture, the building itself is picturesquely situated and of pleasing architecture. The lower floor is devoted to the office and living rooms, the baths being in the rear. The dining room and drawing rooms are luxuriously furnished, and there is a general air of homelike refinement about all the appointments. Upstairs are the spacious sleeping rooms, promising coolness and comfort during the warm nights even to those who view with dread the approach of the enervating heat of summer, when restless nights succeed the weary days. These rooms are rented to those whose desire it is to be near the bath or who prefer the superior



SOLID PORCELAIN BATH TUB, MARBLE NEEDLE SHOWER AND TURKISH MASSAGE SLAB.

HOTEL SANITA AND BATH HOUSE *(Continued.)*

acomodation of the Hotel Sanita to the entertainment of other hotels. Both inside and out the building is remarkably handsome in its construction and convenient in arrangement. An excellent dining room is maintained for the convenience of those desiring this acomodation, the prices charged being moderate. This enables patients suffering from dyspepsia and other stomach troubles to obtain at a moderate cost, food suitable to their requirements, as special attention is paid to the cuisine for such invalids. The gentlemen's parlor, reading rooms, etc., open to right of the hall or office, the ladies' apartments being on the left. Both suites are furnished in

hard wood and elegantly finished and carpeted. The Hotel is heated throughout by steam, and lighted by gas and electricity. Open fire-places are in all the principal rooms.

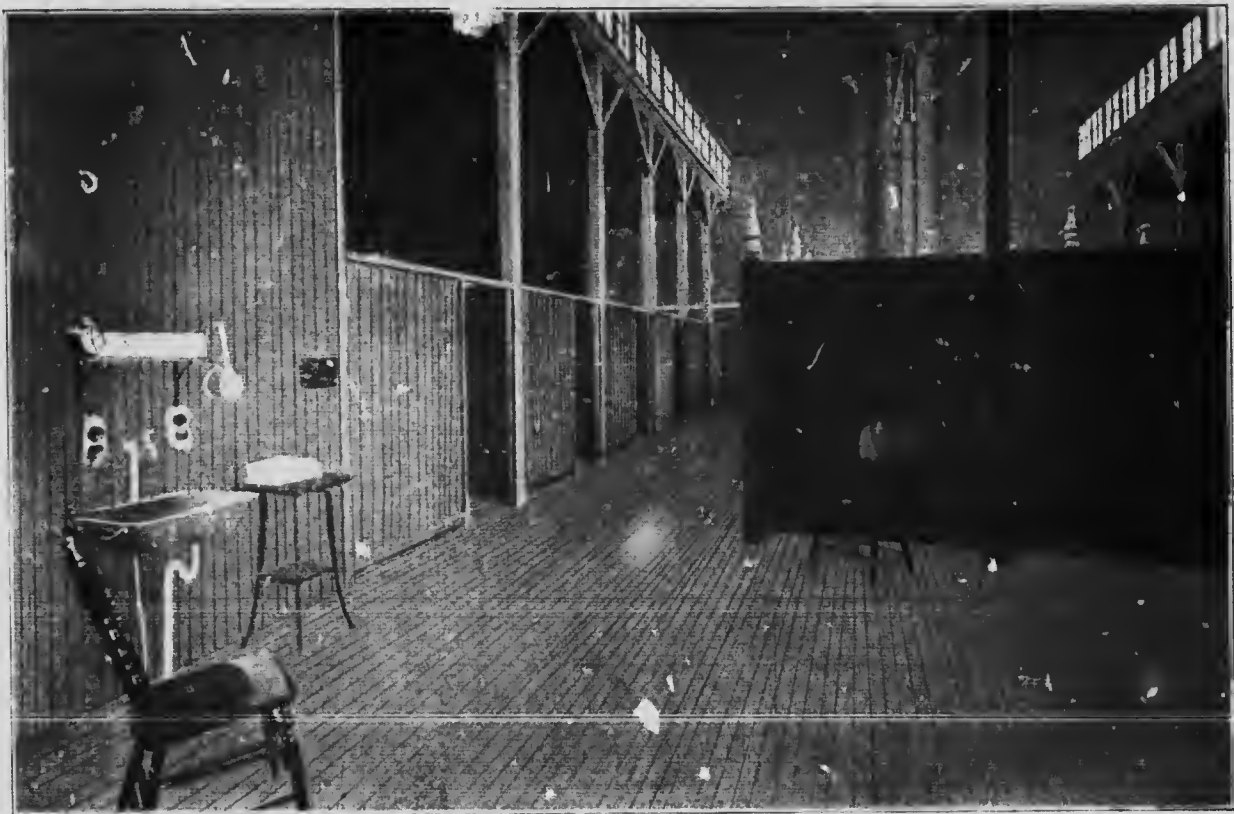
A broad verandah, naturally shaded by maple and other trees, runs the full length of the building's frontage.

Although the summer is usually chosen for visiting institutions of this sort, an equal amount of benefit will be derived from a winter visit, as, with modern appliances, the temperature of the bath house and hotel, can be regulated to a degree, and there is no danger whatever on account of the winter weather.

.... CHATHAM

FEW cities of the same size bear so strong an impress of prosperity as does the city of Chatham. Its buildings and stores are modern and commodious and its public institutions are admirably conducted. A complete system of water works for supplying the citizens with pure water was established a few years ago, and is superior to any system in Canada.

The secretary of the Provincial Board of Health, in his report to the water commissioners of the city, states that the analysis of the Chatham water showed greater purity than any other water used as a city supply in Canada. Chatham possesses two first-class hospitals, the Public General and St. Joseph's hospital, the latter being conducted by the Sisters



CORRIDOR AND BATH ROOMS, GENTLEMEN'S DEPARTMENT.



BEDROOM AND OBSERVATION ALCOVE, OVERLOOKING TECUMSEH PARK.



A BED ROOM, WITH ALL THE COMFORTS OF HOME.

.... CHATHAM.... (Continued.)

of St. Joseph. Both these institutions are fitted with all the modern appliances for operating, etc.

The public schools and Collegiate institute are large and modern buildings, equipped with all modern sanitary appliances, and employing the very best teachers obtainable. A new and very handsome Separate school building has just been erected. The Ursuline Academy is conducted by the Ursuline Nuns. This institution is well known in Canada and the United States, its graduates being scattered throughout the length and breadth of the American Continent.

The churches of Chatham are for the most part handsome edifices, choir music being a special feature in many of them.

The city supports two daily and weekly newspapers, the Banner-News and the Planet, both having a large city and suburban circulation.

The Canada Business College at Chatham, conducted by Mr. D. McLachlan, is one of the leading, if not the best, of the Business Colleges in Canada. Pupils from all parts are prepared for commercial life, and many graduates from this College are holding responsible positions and earning large salaries in Canada and the United States.

On account of Chatham's close proximity to Detroit all the important travelling companies visit here. The Opera House is large and comfortable and up-to-date in all its appointments, and

the theatrical artists are always warmly and generously received.

Besides Tecumseh Park, described below, Chatham possesses Victoria Park, which is part forest of pine trees and contains a fine drive or speedway for horses. The park is called after the late Queen Victoria. It was originally laid out as private grounds and contains pine trees of every known variety.

TECUMSEH PARK,

a government reserve, adjoining which is the Bath House and Hotel Sanita, is one of the largest and most beautiful parks in Canada. It is situated at the fork of the Thames and Me-degor rivers, and is the spot which Tecumseh selected as the strategic point to meet Gen. Harrison and his Kentucky rangers in the war of 1812.

The Dominion Government have under consideration at the present time an appropriation for a new armory to be built on this site for the 21th Regiment. The park is used as a parade ground, being well lighted by electricity. The pictures presented at night, when the regiment executes its field movements, is very pretty, the scarlet uniforms of the soldiers standing out against the deep rich green background of the trees and swarth. The city council have made a grant for open-air handconcerts to be given twice a week by the battalion band in the park during



A SECTION OF CAFE AND DINING ROOM.

.... CHATHAM (Continued.)

the summer. The beautiful park furnishes a recreation ground for the city, which, in natural beauty, will bear comparison with anything of the kind in the world. Cricket, baseball, bowling, lacrosse, tennis and other sports are played on this park daily during the summer, while the Thames and McGregor rivers, which skirt the park on two sides, furnish excellent sport to those who find pleasure in aquatic pastimes. The fishing is excellent. In the winter season the summer sports are supplanted by skating and curling. Both these pastimes are enthusiastically followed by the citizens.

Both rivers are navigable for miles, the upper reaches of the Thames being surpassingly lovely in the summer season. A good boat livery is maintained in connection with the park.

Environment. The sub-peninsula of Ontario, in which Chatham holds a central position, has always enjoyed the reputation of being the garden of Ontario. The soil is phenomenally rich and is well adapted for the cultivation of grain, roots and fruits. No better pasturage can be found anywhere than on the border of Lake St. Clair. Butter, milk and other farm produce can readily be obtained fresh and sweet in Chatham at the very lowest prices. The southern part of Kent county, along the shore of Lake Erie, is famous for its fruits and market garden produce. The market at Chatham abounds in the choicest

fruits, fowl and vegetables. This is a feature which will attract residents of large cities who are suffering from stomach troubles and who have to exercise great care in their diet.

We have prepared a table, which is printed elsewhere, showing estimated cost of first-class board and living which can be secured in Chatham. It will pay you to examine this closely.

The boating, canoeing and fishing on the Thames river is an attractive feature to strangers. The river winds its irregular way to Lake St. Clair, banked on either side by beautiful farms and orchards. The sub-peninsula being almost entirely surrounded by water, the vegetation is unequalled and the panoramic view from the boat is almost tropical in its richness.

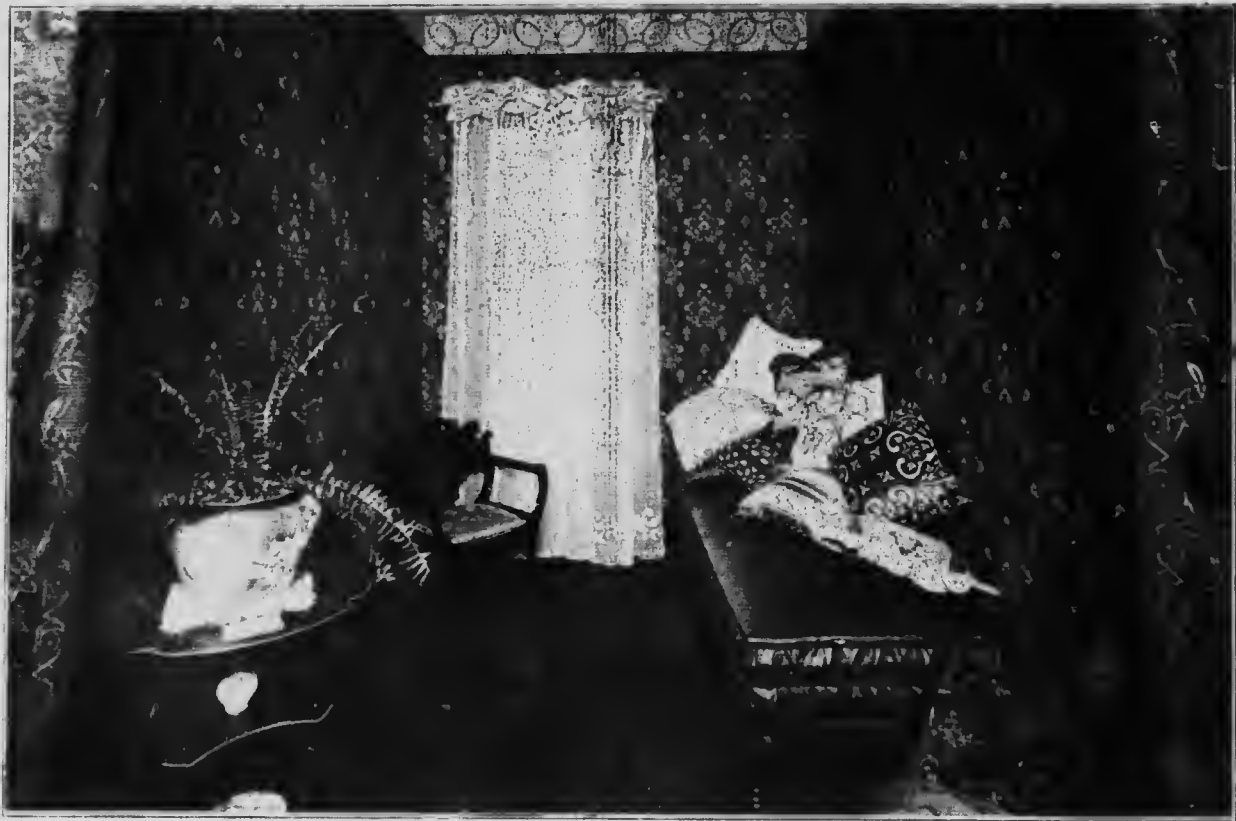
Chatham is only three-quarters of an hour's ride from Detroit. There are five railways running between Chatham and that city, with a system of time tables which enables a person to go down and back almost any hour of the day.

The steamer City of Chatham makes a round trip daily to Detroit by the river Thames, Lake St. Clair and Detroit River, the trip constituting one of the best outings imaginable for the pleasure seeker. On another page will be found the list of railways entering Chatham.





A SECTION OF THE COOLING ROOM, LADIES' DEPARTMENT.



LADIES' COSY CUPPER AND MORNING ROOM.



MEN'S SMOKING ROOM AND LIBRARY.

RONDEAU RESORT.

THIS beautiful lake resort is only 30 minutes ride from Chatham and is reached by the Lake Erie railroad. The train service is first-class in every respect, trains running at all hours of the day and evening. Round trip, 25c.

From the scenic point of view the lover of nature will be delighted with the varied prospects visible at Rondeau. The resort is situated on a neck of land between the north shore of Lake Erie and the beautiful harbor of Rondeau, and is almost an island. Many cottages and other buildings have been erected and hundreds of shade trees supply lounging and picnic spots. The Ontario Government expended \$10,000 in improving the harbor and piers. It is also an important lake port. The car ferry Shesango No. 1, from Conneaut, Ohio, makes regular trips; also the steamer Uramia, from Cleveland, Ohio. Other steamers make occasional stops, in addition to many boats that seek harbor there in bad weather.

This resort is particularly noted for its boating and fishing and at no place on the Great Lakes are better facilities afforded. The harbor is six miles across, and is a magnificent body of water for sailing, with plenty of scope for large and small yachts. The best evidence of its popularity is the increasing number of such craft. The harbor is so situated that there is almost a constant

breeze. When the breeze is from the north the Eau is somewhat rough, but the lake with this wind is perfect for sailing, and vice versa; when sailing cannot be had on one side it is good on the other. Plenty of boats of all kinds can be had at reasonable rates. The fishing is of a high order, and the funny rewards of the anglers' patience include black bass, perch, pickerel, muskallouge and



BATHING SCENE AT RONDEAU.



LADIES' DRAWING-ROOM.

RONDEAU RESORT (Continued.)

pike, to say nothing of the commoner varieties. It is no uncommon morning occurrence to catch a large string of the finest bass weighing from three to six pounds, and the same can be repeated after supper: this is the most popular fishing. Musk-alonge, pike and pickerel are caught by trowling, and many of the former weigh from 12 to 11 pounds.

Bathing is freely indulged in. The beach is of fine sand, firm enough at its margin for a bicycle path, and slopes by a gentle grade without ob-

struction of any kind.

The Provincial Park lies to the north-east of the harbor and is maintained by the Ontario Government. It contains some 2,000 acres, and is covered by huge oak and other mammoths of the forest, where deer and all other kinds of game run wild. The park can be reached by sailing across the harbor—a very pleasant and popular trip.

In the duck season the Eau is literally covered with all species of wild ducks.

MITCHELL'S BAY.

MITCHELL'S BAY can be reached by one hour's drive from Chatham. This famous fishing and shooting ground is a part of Lake St. Clair, and forms one of the attractive features for people visiting Chatham. The bay is shallow, and the rushes which grow very thickly, form excellent cover and protection for ducks. Rice is grown for feed, and the large area of marsh induces the migrating bird to stop as long as possible on his journey south in the fall.

Shooting can be obtained very easily in the autumn months, and lasts until the solid ice com-

pels the ducks to secure warmer quarters. This is probably the best shooting ground in North America and so large in extent that it is safe to say that there are a great many ponds and inlets that have never heard the sound of a gun.

The fishing is also unequalled at this point. Black and green bass, as well as other varieties, are caught annually in large quantities.

There are two hotels at Mitchell's Bay, where the tourist, angler or hunter can get what accommodation he requires.

A STRING OF
NINETY-TWO
BLACK BASS
AND
SEVEN PIKE
CAUGHT IN
THE
RIVER
THAMES
IN 5 HOURS
BY THREE
PROMINENT
CITIZENS
OF
CHATHAM.





KING STREET, CLATHAM, FROM C. P. R. STATION.



A REGATTA SCENE ON THE THAMES.

SCHEDULE OF HOTELS AND RATES.

CHATHAM being surrounded by first-class farming and garden land, all kinds of fowl, fruits, vegetables and table stuffs can be secured fresh and at a very low price, which makes the cost of living much less than in larger cities.

The total cost of a course of 21 baths (occupying three weeks' time) including rooms and meals at Hotel Sanita and attendant at bath, will range from \$50 up.

Persons taking baths at the Chatham mineral springs, not wishing to live at the Hotel Sanita or other hotels in the city (the prices of which range from \$1.00 to \$3.00 per day) can procure excellent accommodation at boarding houses conveniently located to the springs at a cost of from \$2.50 to \$5.00 per week.

Following are some of the hotels with prices for rooms and meals per day :

Hotel Sanita.....	\$2.00 per day and up
Hotel Garner	\$2.00 per day and up
Rankin House.....	\$1.50 per day
Canadian Pacific Hotel	\$1.50 " "
Merrill House.....	\$1.50 " "
Grand Central Hotel.....	\$1.50 " "
Idlewild Hotel.....	\$1.00 " "
Park House	\$1.00 " "
Tecumseh House.....	\$1.00 " "
Aberdeen Hotel	\$1.00 " "
Rutley House.....	\$1.00 " "

Montana House.....	\$1.00 per day.
Prince Edward House.....	\$1.00 " "
Montreal House.....	\$1.00 " "
Pacific Hotel.....	\$1.00 " "
Myles' Hotel.....	\$1.00 " "
Courtney House.....	\$1.00 " "



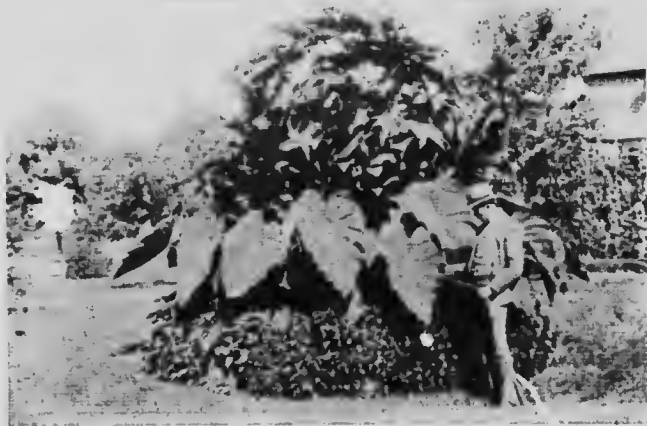
**FRANK MARTIN'S ON
THE "SNY."**

RAILROADS.

THIS HOTEL is situated across Mitchell's Bay and is the rendezvous for a great many American as well as Canadian tourists. It is in the centre of the bass fishing grounds, and the genial proprietor can always tell his guests where to procure a good catch of fish. In the fall many duck hunters make this their headquarters for weeks at a time.

CHATHAM is reached by the Grand Trunk, Canadian Pacific, Wabash, Michigan Central and Lake Erie and Detroit River Railways. From spring to fall there is a daily steam boat service between Detroit and Chatham and between Cleveland and Chatham.

Detroit is within 15 minutes' ride by rail, and express trains run hourly.



CANNA BED IN THE HOTEL SANTA GROUNDS.

