

*Varsity*

'00-'01.

# Gentlemen's Clothing

ready-to-wear.

The most persistent economists  
can find just what they want  
at just what they want to pay,  
and the better judges they are  
of good clothing, the better  
we like it—the more certain we  
are of selling quickly.

New Fall and Winter  
Suits and Overcoats  
are ready for your critical  
inspection at \$5.00 to  
\$15.00.

## OAK HALL CLOTHIERS

115 King St. East  
opp. the Cathedral, and  
116 Yonge St., cor. of Adelaide  
Toronto

1900

OCT

S M T

.. 1 2  
7 8 9  
14 15 16  
21 22 23  
28 29 30  
.. .. .

NOV

.. .. .  
4 5 6  
11 12 13  
18 19 20  
25 26 27  
.. .. .

DEC

.. .. .  
2 3 4  
9 10 11  
16 17 18  
23 24 25  
30 31 ..

JANU

.. .. .  
6 7 8  
13 14 15  
20 21 22  
27 28 29  
.. .. .

FEB

.. .. .  
3 4 5  
10 11 12  
17 18 19  
24 25 26  
.. .. .



PH-0617-(06)

# 1900 CALENDAR. 1901

## OCTOBER.

S	M	T	W	T	F	S
..	1	2	3	4	5	6
7	8	9	10	11	12	13
14	15	16	17	18	19	20
21	22	23	24	25	26	27
28	29	30	31	..	..	..

## NOVEMBER.

..	..	..	..	1	2	3
4	5	6	7	8	9	10
11	12	13	14	15	16	17
18	19	20	21	22	23	24
25	26	27	28	29	30	..

## DECEMBER.

..	..	..	..	1	..	..
2	3	4	5	6	7	8
9	10	11	12	13	14	15
16	17	18	19	20	21	22
23	24	25	26	27	28	29
30	31	..	..	..	..	..

## JANUARY, 1901.

..	..	1	2	3	4	5
6	7	8	9	10	11	12
13	14	15	16	17	18	19
20	21	22	23	24	25	26
27	28	29	30	31	..	..

## FEBRUARY.

..	..	..	..	1	2	..
3	4	5	6	7	8	9
10	11	12	13	14	15	16
17	18	19	20	21	22	23
24	25	26	27	28	..	..

## MARCH.

S	M	T	W	T	F	S
..	..	..	..	..	1	2
3	4	5	6	7	8	9
10	11	12	13	14	15	16
17	18	19	20	21	22	23
24	25	26	27	28	29	30
31	..	..	..	..	..	..

## APRIL.

..	1	2	3	4	5	6
7	8	9	10	11	12	13
14	15	16	17	18	19	20
21	22	23	24	25	26	27
28	29	30	..	..	..	..

## MAY.

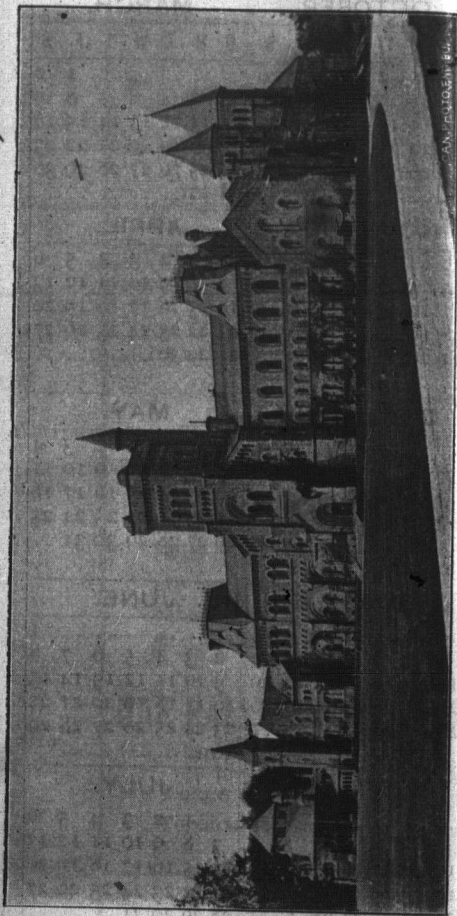
..	..	1	2	3	4	..
5	6	7	8	9	10	11
12	13	14	15	16	17	18
19	20	21	22	23	24	25
26	27	28	29	30	31	..

## JUNE.

..	..	..	..	..	1	..
2	3	4	5	6	7	8
9	10	11	12	13	14	15
16	17	18	19	20	21	22
23	24	25	26	27	28	29
30	..	..	..	..	..	..

## JULY.

..	1	2	3	4	5	6
7	8	9	10	11	12	13
14	15	16	17	18	19	20
21	22	23	24	25	26	27
28	29	30	31	..	..	..



P  
univ.  
T

S

"A  
cons  
beca  
beca

CH

Cop

P  
univ. Rept  
T

# Varsity

## Students' Hand Book



"And so, we, who in a peculiar sense are consecrated to truth, are better Christians because we are students, and better students because we are Christians."—*Phillips Brooks.*

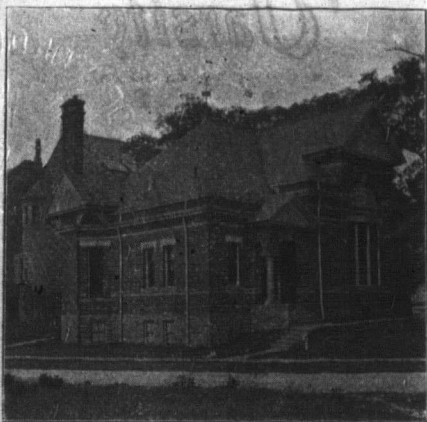
188455:  
PRESENTED BY

The 17.3.24.  
Young Men's  
Christian Association  
of  
University College.

Copies may be had at the office of the General Secretary.

TORONTO, ONT.

1900-1901



Y. M. C. A. BUILDING

## Greetings...

TO ALL OUR FRIENDS, new and old, the Young Men's and Young

Women's Christian Associations extend a most sincere welcome, and present this book, that you may more readily become acquainted with the various features of College life. If it prove useful to you, and indicate the desire of the Associations to be of service to every student, its object will have been accomplished. In the name of our Master, we ask you to join us in helping and being helped.

CH

Pres  
1st  
2nd  
Trea  
Assi  
Rec  
Gen

Men  
Dev  
Roo  
City  
Bibl  
Fall  
Fin  
Mus  
Inte  
Miss

T  
fur  
reli  
pro  
war  
Chr  
and  
ser  
the

The  
**Young Men's  
Christian Association**  
of  
**University College.**

FOUNDED, MARCH, 1873.

**Officers 1900-1901.**

President .....	D. J. Davidson, '01
1st Vice-President .....	C. A. Masters, '01
2nd Vice-President .....	J. A. Henry, S.P.S.
Treasurer .....	R. B. B. Cochrane, '02
Assistant Treasurer .....	J. W. Baird, '03
Recording Secretary .....	J. C. Ross, '03
General Secretary .....	R. J. Wilson, B.A.

**Convenors of Committees.**

Membership .....	R. A. Cassidy, '01
Devotional .....	A. E. Armstrong '02
Rooms .....	J. L. McPherson, '01
City Missions .....	A. G. McPhedran, '01
Bible Study .....	W. Simpson, '01
Fall Campaign .....	E. F. Burton, '01
Finance .....	R. B. B. Cochrane, '02
Music .....	G. Eadie, '01
Intercollegiate Movement .....	R. J. Younge, '02
Missionary .....	G. F. N. Atkinson, '01

**Object of the Association.**

The object of the Association is to furnish a home-like centre for the religious life of the University, to promote a manly and straightforward Christianity and aggressive Christian work by and for students, and to train them for devoted service to Jesus Christ throughout their whole lives.

### Association Hall.

The building, which was erected in 1886, and furnished by the Ladies' Auxiliary, is open every day, except Sunday, from 8 a.m. to 6 p.m. Its privileges are open to all students. The Reading Room is well supplied with newspapers, periodicals and magazines. The parlor is very comfortably furnished, and members will always find at their disposal a piano, an organ, college song books, and games.

### Library.

The Library of the Association is composed chiefly of works on missions. Books will be let out on application to the General Secretary or any member of the Rooms' Committee, and should be returned at the end of two weeks.

### Boarding Houses.

At the office of the Association students will find a complete list of rooms and boarding houses, which have been inspected personally by the members of our Fall Campaign Committee. During the first week of October members of this Committee will be in attendance, and will give all possible assistance to new students.

### General Secretary.

With the erection of Association Hall the administration of the growing work of the Association was too heavy a burden upon the President and undergraduate officers, so the



Association employ a graduate as General Secretary or executive officer to supervise the work. The Secretary will be pleased to see any student to whom he may be of service. His hours will be found on the Y. M. C. A. bulletin board.

### **Membership.**

*The Active Membership* consists of students who are members in good standing of any evangelical church.

*The Associate Membership* consists of students of good moral character, but who are not necessarily members of any church.

The annual fee for both Active and Associate Members is \$1.00.

*The Life Membership* consists of graduates and undergraduates of the University who agree to pay the sum of \$2.00 per year for five years for the support of the work.

Students may be nominated for membership at any regular meeting of the Association.

### **Regular Meetings.**

*Thursday Afternoon Meeting.*—Every Thursday afternoon at 5 o'clock a devotional meeting is held in the Association Hall. These meetings will be conducted by the students and prominent Christian men of the city.

*Class Prayer Meetings.*—Each of the four years and the S.P.S. hold a weekly prayer meeting on their respective days, at 8.30 a.m. The arrangement of the various days will be announced as early as possible.

**Bible Classes.**—These are four in number — the Third and Fourth Years, the Second Year, the First Year, and the S. P. S.

The Third and Fourth Year Bible Class will meet with Professor McCurdy as leader, to take up Studies from the Prophets. This Class meets in Y. M. C. A. Building.

The Second Year Class will meet with Principal Sheraton, of Wycliffe College, as leader. The course this year will be the second of the series published by the International Committee.

The First Year Class will be conducted by Wm. Simpson, '01, and will take up a special series of Studies in the Life of Christ. The Class will meet in Y. M. C. A. Building.

Announcement of the S. P. S. Bible Class will be made early in the term.

All of these Classes will meet every Sunday at 9.30 a.m.

---

## MEDICAL FACULTY Y. M. C. A.

---

### Officers.

#### FINAL YEARS.

President.....	W. J. Abbott, B.A.
Vice-President .....	A. F. Hoidge
Treasurer. ....	M. D. McKicken, B.A.
Secretary .....	C. H. Montgomery

#### PRIMARY YEARS.

President .....	J. A. Oille		
Treasurer .....	J. Knipfel		
Secretary .....	E. Fredrick		
Councillors .....	<table> <tbody> <tr> <td>W. W. Medley</td> </tr> <tr> <td>D. A. Johnston</td> </tr> </tbody> </table>	W. W. Medley	D. A. Johnston
W. W. Medley			
D. A. Johnston			

## Young Women's Christian Association

### Officers, 1900-1901.

Honorary President.....	Mrs. Squair
President.....	Miss A. C. Macdonald, '01
Vice-President....	Miss M. A. Macdonald, '02
Treasurer .....	Miss F. M. Wicher, '01
Rec. Secretary .....	Miss E. A. Robinson, '02
Cor. Secretary.....	Miss M. Lough, '03

### Convenors of Committees.

Membership .....	Miss A. B. Francis, '01
Missionary .....	Miss L. Darling, '01
Music .....	Miss T. A. Robertson, '01
Lunch .....	Miss M. Watt, '01
Sec. of Bible Class....	Miss E. E. Conlin, '01
Leader of Missionary Study Class....	Miss F. Cole, '01

### Meetings.

The Association holds a regular weekly devotional meeting in the Y. M. C. A. Hall. The time of the meeting will be announced on the program.

The Bible Class, conducted by Dr. Tracy, meets every Sunday afternoon at 3 o'clock in the Y. M. C. A. Parlor.

There is a meeting for prayer held each morning at 8.45 in the ladies' lunch room, University College.

A Missionary Study Class is held weekly during the year, the time and place of which will be arranged early in the term.

## Intercollegiate Movement

Its purposes are threefold :—

1. To bring the students of the world to Christ.
2. To guard and develop them in Christ.
3. To send them to work always and everywhere for Christ.

The Intercollegiate Movement of the United States and Canada now unites nearly 600 Y. M. C. A.'s in institutions of higher learning. The phenomenal growth of the organization from 26 Associations in 1877 with a membership of 1,300, to nearly 600 now with 35,000 members, shows that it is filling a felt need in student life. In every line of Christian work—in the bringing in of men into new relations with Christ, in the systematic study of the Bible, and in the increased missionary zeal of students—there has been real advance.

The work is under the continued and careful supervision of the International Committee, who, with headquarters at New York, very materially assist us through the visits of their travelling secretaries and their ready advice by constant correspondence.

## The Student Volunteer Movement

---

This Movement, though only in organization since 1888, has already nearly 1,400 of its members in the foreign field.

To college men it constitutes the Foreign Mission Department of the Student Association.

This is the pledge of its members:

It is my purpose, if God permit, to become a Foreign Missionary.

---

## The World's Student Christian Federation

---

This Federation which seeks to unite students in all lands in a common brotherhood includes over 1,200 Student Associations, with a membership of upwards of 55,000 students and professors. Mr. John R. Mott is its President, and those who heard this great man's thrilling addresses last February will never forget the directness of his appeal to the students of our College.

## The Canadian Colleges' Mission

### Officers.

President....Prof. J. G. Hume, M.A., Ph.D.  
Secretary-Treas....Dr. Harley Smith, B.A.  
Travelling Secretary .....J. M. Waters.

In 1888 our Y.M.C.A., strong in its foreign mission spirit, sent its first missionary, Mr. J. S. Gale, B.A., to Corea, and two years later the Meds sent out to the same field Dr. and Mrs. Hardie. From this grew the Canadian Colleges' Mission, a distinctly interdenominational organization, embracing 85 Canadian schools and colleges, which have banded together to press the claims of the heathen student upon the Christian students of Canada.

We have chosen for our field of labor the great student population of Calcutta, India, and for our representative there, Mr. J. Cambell White, M.A., General Secretary of the College Y.M.C.A.

Among the great mass of students in Calcutta there have been 300 men, on an average, using the privileges of the Y.M.C.A. each day, and 600 attending the services each week this year.

When Principal Fairburn, of Mansfield College, Oxford, delivered six lectures on Christian Evidences, he

had an  
Christi  
listene  
very cl

Amo  
are tw

(1) T  
the Ea

(2) T  
Wester

Thes  
capabl  
the lea  
Cross  
the fo  
and th  
ions o  
being  
Christ  
Hindu  
revere  
multit  
ripe fo  
influer

Kes  
came  
the tr  
deserv  
ious o  
Christ  
Colleg  
they a  
dian c  
of it  
this w

For  
studen  
The  
month



had an audience of 1,000 non-Christian upper class students, who listened to the whole series with the very closest attention.

Among the students of India there are two classes :—

(1) Those familiar with the lore of the East, 20,000,000 in number.

(2) Those who know English and Western learning, about 4,000,000.

These Eastern students have minds capable of profound thinking, and the leaven of the missionaries of the Cross is slowly working its way to the foundations of their religions, and they are casting off the religions of their fathers as these are being faithfully contrasted with Christianity. The best minds of Hindustan have begun to bow in reverence to our Lord, and great multitudes are now in a condition ripe for the reception of Christian influence and truth.

Keshab Chandra Sen, who himself came but lately to a knowledge of the truth, said, "None but Jesus deserves to wear the bright and glorious diadem of India, and Jesus Christ shall have it." The Canadian Colleges' Mission believes this, and they ask every student of the Canadian colleges to help the realization of it by a faithful remembrance of this work.

For details of this work, and latest student missionary intelligence, see *The College Missionary*, published monthly.

# College Calendar

1900-1901

1900.

Oct. 1.—Academic year begins.  
Registration of students  
by the Registrar, and  
enrolment in classes by  
the various Professors.

2.—Lectures in Arts begin.

12.—Annual Field Sports of  
University of Toronto.

19.—Varsity-McGill Athletic  
Meet, on the University  
Athletic Field, Toronto.

Dec. 17-21.—Term Examinations in  
Arts.

21.—Michaelmas Term ends.

25.—University Buildings

1901.

[closed.

Jan. 1.—University Buildings  
closed.

7.—Easter Term begins.

Feb. 20. } University Buildings

Apr. 5. } closed.

13. }  
13.—Examinations in School  
of Practical Science be-  
gin.

16-19.—Term Examinations in  
Arts.

19.—Lectures in Arts end.

22.—Annual Examinations in  
Applied Science begin.

May 1.—Annual Examinations in  
Arts begin. [closed.

24.—University Buildings

June 7.—University Commence-  
ment.

Un

182  
establ  
the m

184  
the c  
Build

184  
Facul  
Divin

185  
with  
ulty c

King  
the U

185  
ished,  
with  
The

the p  
and t

185  
of the

185  
corne  
Buidl

185  
cope  
tower

187  
of the  
iation

188  
THE V  
of a j

# University of Toronto.

## HISTORICAL.

1827.—Royal Charter granted for establishing a State University under the name of King's College.

1842 — APRIL 23RD.—Laying of the corner stone of King's College Building in Queen's Park.

1843.—Beginning of Lectures in Faculties of Arts, Medicine, and Divinity.

1850.—JAN. 1ST.—In accordance with an Act of Parliament, the Faculty of Divinity ceases to exist, and King's College is transformed into the University of Toronto.

1853.—Faculty of Medicine abolished. University College created, with a teaching Faculty in Arts. The University of Toronto retains the power to conduct examinations and to grant degrees.

1854.—FEB. 22ND.—Establishment of the Literary and Scientific Society.

1856.—OCT. 4TH.—Laying of the corner stone of University College Building.

1858.—OCT. 4TH.—Placing of the cope stone on the turret of the main tower.

1873.—MAR. 29TH.—Organization of the Young Men's Christian Association.

1880—OCT. 7TH.—First issue of THE VARSITY under the management of a joint-stock company.

1881.--Establishment of the School of Practical Science and erection of the building.

1886.—MAR. 2ND.—Opening of the Y. M. C. A. Hall.

1887.—University Federation Act, by which the University of Toronto is given teaching Faculties in Arts, Medicine, and Law.

1888.—Erection of Biological Building on the site of old Moss Hall.

1890.—FEB. 14TH.—The University College fire.

1890.—OCT. 7TH.—First issue of THE VARSITY under the management of the Literary and Scientific Society.

1891.—JUNE 15TH.—Laying of the corner stone of Victoria College.

1892.—MAR. 24TH.—The Young Men's Christian Association incorporated.

1892.—APRIL 1ST.—Canadian Colleges' Mission established.

1892.—AUG. 6TH.—Death of Sir Daniel Wilson, President of the University.

1892.—SEPT. 13TH.—Prof. James Loudon, M.A., LL.D., appointed President.

1892.—Library Building opened.

1894.—Gymnasium Building completed.

1895.—Chemistry and Mineralogy Building completed.

Rea  
every  
Our  
new J  
We  
blue a  
All  
which  
o'clock  
Join  
the pr  
Mal  
house  
rooms  
Pat  
help  
Join  
once,  
Bible  
Sul  
and d  
Hand  
the E  
Loc  
ceptic  
place  
Th  
office  
and  
If  
the w  
Missi  
every

## Pointers

---

Read the Varsity bulletin boards every morning.

Our Beadle is Robert Martin, our new Janitor, Charlie —

Wear the College colors—Royal blue and white.

All students should attend prayers, which are read every morning at 10 o'clock in Room 3.

Join the LIT. at once, and enjoy the privileges of the Reading Room.

Make free use of the boarding house lists found in the Y.M.C.A. rooms.

Patronize our advertisers—they help us, help them.

Join one of our Bible Classes at once, to assist you in systematic Bible study.

Subscribe for VARSITY at once, and don't be afraid to write for it. Hand your article to any member of the Editorial Board.

Look out for the Y.M.C.A. reception in October. Its a great place to get acquainted !

The General Secretary is in his office every afternoon between 4 and 5. Give him a call.

If you wish to know something of the work in other lands, attend the Mission Study Class which meets every Saturday evening.

## Pointers

The Y.M.C.A. Building is always open to all students of the University. In the Reading Room you will find dailies, denominational and missionary papers; and in the Parlor, a piano, song books and games are at your disposal.

If you wish to do City Mission Work, hand your name to the Convener of the City Mission Committee.

Take exercise every day, and don't work on Sunday.

Everybody knows the Varsity yell. Here it is:—

Var-si-ty Var-si-ty

V—A—R—S—I—T—Y

Var-si-ty Var-si-ty

V—A—R—S—I—T—Y

*ff.* V—A—R—S—I—T—Y

Var-si-ty

'Rah! 'Rah! 'Rah!

You'll hear it soon.

C  
UNI  
AT

Presid  
Vice-P  
Sec., T

Direct

Th  
tic A  
name  
body  
comb  
Assoc  
now  
Direc  
lowin  
repre  
the U  
Prof.  
Arts,  
from  
Scien  
repre  
Mess  
tram  
Unde  
was  
tary-



# College Athletics

....THE....

## UNIVERSITY OF TORONTO ATHLETIC ASSOCIATION.

### Directorate.

President.....	President Loudon, LL.D.
Vice-President.....	G. W. Ross, B.A.
Sec.-Treas.....	V. E. Henderson, B.A.
Directors	Prof. Fletcher, M.A., LL.D.
	C. H. C. Wright, B.A. Sc.
	J. A. Jackson, B.A.
	E. P. Brown.
	G. M. Bertram.
	F. H. Wood.
	F. C. Jackson.

The University of Toronto Athletic Association is now, not only in name, but in fact, the paramount body in University athletics. It combines the powers of the former Association with the powers of the now extinct Athletic Board. Its Directorate is composed in the following manner:—There are three representatives of the Faculties of the University, President Loudon and Prof. Fletcher from the Faculties in Arts, and Mr. C. H. C. Wright from the Faculty of the School of Science. Mr. J. A. Jackson is the representative of the graduate body, Messrs. Ross, Brown, Wood, Bertram and Jackson, were elected by the Undergraduates. Mr. Henderson was subsequently elected as Secretary-Treasurer by the Directorate.

All Undergraduates of the University of Toronto and its affiliated colleges are members of the Association. The Association has the final control, subject only to the University authorities, over the finances, policy and membership of all University athletic clubs. At the opening of the athletic season of any club, the Secretary-Treasurer of the club must submit to the Directorate for approval a statement of the policy and plans of the club for the coming season, together with an estimate of its probable income and expenditure. No student can contract any debt in the name of any University athletic club, but must obtain a written order from the Secretary-Treasurer of the Association. The Directorate has also control of the fields of the University, and written application for their use should be made to the Directorate through the Secretary-Treasurer.

### **The Gymnasium.**

The University Gymnasium is exceedingly well equipped, and is probably the best gymnasium in Canada. Mr. Williams, the instructor, is one of the best gymnasts in Canada, and a splendid instructor in all branches of gymnasium work, as well as boxing and fencing. The Gymnasium Club has arranged for class work on Monday, Wednesday and Friday afternoons, beginning October 10th, from 4.30 to 6 o'clock. At other hours the gymnasium will be open freely to the members. The fencing classes will be held in the new fence-

ing  
The  
Sec  
A.  
men  
batl

T  
year  
ber  
and  
priz  
titor  
chos  
in  
McC  
Eve  
whic  
year  
ever  
Coll

ing room, on Tuesday and Thursday. The fee for the year, payable to the Secretary-Treasurer of the U. of T. A. A., is \$4.00; this entitles the member to a locker and use of the baths.

### Field Sports.

The Annual Games are held every year on the second Friday of October (this year October 12th), silver and bronze medals will be given as prizes. From the successful competitors a team of fifteen men will be chosen to represent the University in a contest to be held against McGill, on October 19th or 20th. Every student should see this meet, which will be held in Toronto this year, and which is the most important event in the history of Canadian College athletics.

## FIELD DAY

EVENTS	RECORDS, 1899
1. Running Broad Jump.....	19.3 ft.
2. Throwing Discus.....	
3. Throwing 16-lb. Hammer....	124.75 ft.
4. Putting 16-lb. Shot.....	34.02 ft.
5. 100-yards Race.....	10 sec.
6. Half-mile Race.....	2.09 min.
7. 220-yards Run .....	25 1-5 sec.
8. Preparatory School Championship (440-yds.)	55 3-5 sec.
9. High Jump .....	5.1 ft.
10. Graduates' Race .....	26 2-5 sec.
11. 440-yards Run .....	56 secs.
12. Mile Run .....	4.48 min.
13. Pole Vault.....	8.4 1-2 ft.
14. Hurdle Race (120-yds.).....	17 sec.
15. Team Race .....	

# FIELD DAY

RECORDS,  
1899

WINNER

1900

19.3 ft.

1.....

2.....

124.75 ft.

3.....

34.02 ft.

4.....

10 sec.

5.....

1.09 min.

6.....

5 1-5 sec.

7.....

5 3-5 sec.

8.....

.1 ft.

9.....

6 2-5 sec.

10.....

6 secs.

11.....

48 min.

12.....

4 1-2 ft.

13.....

7 sec.

14.....

15.....

# RUGBY FOOTBALL

## Intercollegiate

### Rugby Football Union.

#### Officers.

Hon. President..... Prof. McCurdy (Tor.)  
 President..... H. M. Nimmo, B.A.  
 Vice-President..... G. W. Ross, Jr., B.A.  
 Sec.-Treas..... F. S. Ratch, B.A.

The Intercollegiate Rugby Football Union of Canada, which was organized in 1898, has passed through two successful seasons. Varsity I. has won the senior championship each year, while Varsity II. were beaten out in the finals last year by the Royal Military College of Kingston. The colleges represented in the Union are University of Toronto, McGill, Queen's, Royal Military College, and Trinity.

## RUGBY CLUB

#### Officers.

Hon. President..... Dr. F. N. G. Starr  
 Hon. Vice-Pres.. J. C. McLennan, B.A., Ph.D.  
 President..... E. P. Brown, '01  
 Vice-President..... V. E. Henderson, B.A.  
 Sec.-Treas..... E. R. Paterson, '02  
 4th Yr. Representative, A. F. Aylesworth, '01  
 3rd " "..... S. P. Biggs, '02  
 2nd " "..... N. L. Hoyles, '03  
 3rd and 4th Yr. Meds..... J. McCallum  
 2nd and 1st "..... A. J. MacLeod  
 S. P. S. Representative..... W. E. Douglas  
 Dental "..... O. K. Gibson  
 Knox "..... Dan Urquhart  
 St. Michael's "..... J. Sheridan  
 Victoria "..... H. Chown

Our Rugby Club puts three teams in the field every Fall, and inter-year matches are played after the close of the championship season.

## ASSOC

### Associ

Hon. Presi  
 President.  
 Vice-Presid  
 Sec.-Treas

Ample  
 Associat  
 the serie  
 legiate  
 of Toron  
 intermed  
 federate  
 one or n  
 lege an  
 Science  
 each thi  
 played  
 and are  
 champio  
 High S  
 year.

Hon. Pr  
 Presiden  
 Vice-Pres  
 Secretar  
 Treasur  
 Captain  
 4th Yr.  
 3rd "  
 2nd "



## ASSOCIATION FOOTBALL

### Intercollegiate

### Association Football League.

#### Officers.

Hon. President..G. W. Johnston, B.A., Ph. D.  
President..... E. J. Zavitz, McMaster  
Vice-President.... F. C. Jackson, S.P.S.  
Sec.-Treas..... E. F. Burton, Varsity

Ample opportunity to see and play Association Football is afforded by the series of games in the Intercollegiate Association Football League of Toronto. Two series, senior and intermediate, are played, and every federated college is represented by one or more teams. University College and the School of Practical Science expect to have two teams each this Fall. The games are all played on the University grounds, and are free. S.P.S. won the senior championship, and Toronto Junction High School the intermediate, last year.

## ASSOCIATION CLUB

#### Officers.

Hon. President ..... A. T. DeLury, B.A.  
President..... E. F. Burton, '01  
Vice-President..... F. A. McDiarmid, '02  
Secretary..... G. A. McPherson, '01  
Treasurer..... J. A. Soule, '02  
Captain..... R. A. Smillie, '01  
4th Yr. Representative.... W. J. Wilson, '01  
3rd " " ..... F. H. Broder, '02  
2nd " " ..... R. DeLury, '03

## BASE BALL CLUB

### Officers.

Hon. President....	Professor Alfred Baker
President.....	J. R. Parry, E.A.
Vice-President.....	D. A. Sinclair, B.A.
Manager.....	W. G. Harrison, '00
Captain.....	J. R. Parry, B.A.
4th Yr. Representative...	H. M. Sinclair, '00
3rd " " " " " "	E. P. Brown, '01
2nd " " " " " "	F. A. McDiarmid, '02
1st " " " " " "	H. G. Wallace, '03
Senior Meds' " " " " " "	A. J. G. MacDougall
Junior Meds' " " " " " "	J. W. Gray
Victoria " " " " " "	J. A. Ferguson, '00
S. P. S. " " " " " "	W. Brereton
Dental " " " " " "	W. McKay
Pharmacy " " " " " "	F. Mitchell
Knox " " " " " "	A. M. Boyd

## CRICKET CLUB

### Officers.

Hon. President.....	T. G. Blackstock, Q.C.
Hon. Vice-President.....	M. C. Cameron
President.....	S. F. Shenstone, '00
Vice-President.....	N. R. Beal, '00
Sec.-Treas.....	S. A. Mullin, '02
Captain.....	E. P. Brown, '01
Curator.....	H. L. Hoyles, '03
Committee.....	W. R. Meredith, '00
	A. J. Isbester, S.P.S.
	A. W. Mackenzie, '02
	W. F. Kingstone

Hon. Presi  
Captain ...  
Sec.-Treas.

Committee

This ( )  
bers of  
both wo  
ates. T  
ing the

Hon. Pre  
Hon. Vic  
President  
Vice-Pres  
Sec.-Treas  
Manager  
Captain.  
Committee

This  
Ontario  
are als  
Univer

## GOLF CLUB

### Officers.

Hon. President.....	President Loudon
Captain.....	Dr. Ellis
Sec.-Treas.....	H. F. Gooderham, '00
Committee.....	{ Professor Wrong
	{ Dr. Needler
	{ M. C. Cameron
	{ R. B. Fudger
	{ A. N. W. Clare

This Club consists of the members of the different Faculties, and both women and men Undergraduates. Their grounds are just adjoining the University Athletic Field.

## HOCKEY CLUB

### Officers.

Hon. President.....	President Loudon
Hon. Vice-President.....	W. T. Jennings, C.E.
President.....	Frank Morrison, '00
Vice-President.....	A. J. Isbester, S.P.S.
Sec.-Treas.....	A. Winters, B.A.
Manager.....	F. H. Broder, '02
Captain.....	O. K. Gibson
Committee.....	{ A. W. McKenzie, '00
	{ J. R. Parry, B.A.

This Club has three teams in the Ontario Union. Interyear matches are also played on the rinks of the University Athletic Association.

## GYMNASIUM CLUB

### Officers.

Hon. President.....	Professor Alfred Baker
President.....	F. H. Wood, '01
Vice-President.....	W. Dunn
Sec.-Treasurer.....	G. M. Bertram
4th Yr. Arts Representative..	J. A. Miller, '01
3rd " " " " " "	S. P. Biggs, '02
2nd " " " " " "	T. A. Hargraves, '03
S.P.S. Representative.....	H. Middleton
Meds' " " " " " "	{ O. L. H. Forbes
Dental " " " " " "	{ J. W. Gray
Knox " " " " " "	O. K. Gibson
Victoria " " " " " "	N. R. D. Sinclair
Wycliffe " " " " " "	W. H. Hamilton
St. Michael's " " " " " "	R. N. Millman
	J. Callamane

## TRACK CLUB

### Officers.

Hon. President.....	Dr. J. B. Wilmott
President.....	J. G. Merrick, B.A.
Vice-President.....	J. W. Gray
Sec.-Treas.....	R. N. Millman
4th Yr. Arts Representative...	E. P. Brown
3rd " " " " " "	F. H. Broder
2nd " " " " " "	M. H. Gander

## TENNIS CLUB

### Officers.

Hon. President .....	Prof. McCurdy
President .....	E. B. Paterson, '02
Vice-President.....	R. G. Dingman, '03
Sec.-Treas.....	R. B. B. Cochrane, '02
Councillors .....	{ G. M. Bertram, S.P.S.
	{ C. L. Wilson, '02
	{ H. Chown, '03
	President Loudon
	Hon. Wm. Mulock, LL.D.,
	Q.C., M.P.
Patrons .....	John Hoskin, LL.D., Q.C.
	A. Carruthers, M.A.
	G. H. Needler, B.A., Ph.D.
	Rev. Elmore Harris, D.D.

# LADIES' TENNIS CLUB

## Officers.

Hon. President.....Mrs. Carruthers  
 President .....Miss F. M. Wicher, '01  
 Vice-President ....Miss M. E. Marshall, '02  
 Sec. Treas.....Miss I. R. McCurdy, '03  
 Graduate Councillor..Miss M. M. Lang, B.A.  
 4th Year " " " A. E. Crane, '01  
 Curator....." R. Cameron, '03

The Tennis Club has ample courts beside the Gymnasium, and every facility is at hand for students to join in the game. The Fall and Spring Tournaments are looked forward to by all lovers of tennis at Varsity. The Ladies' Court is situated in the quadrangle.

# LACROSSE CLUB

## Officers.

Hon. President.....President Loudon  
 President .....A. E. Snell, B.A.  
 Vice-President .....F. Morrison, '00  
 Captain .....H. D. Graham, '00  
 Manager and Secretary ..W. J. Hanley, '01  
 Committee—Arts .....{ ..P. A. Greig, '00  
 .....{ ..F. P. Potvin, '01  
 .....{ ..A. Martin, '02  
 .....{ ..W. O'Flynn, '03  
 Senior Meds' Representative..G. D. Stanley  
 Junior " " ..F. Sutton  
 S.P.S. " " ..F. C. Jackson

red Baker  
 Wood, '01  
 W. Dunn  
 Bertram  
 Miller, '01  
 Biggs, '02  
 raves, '03  
 diddleton  
 H. Forbes  
 Gray  
 E. Gibson  
 Sinclair  
 Hamilton  
 Millman  
 allamane

Wilmott  
 ck, B.A.  
 W. Gray  
 Millman  
 Brown  
 Broder  
 Gander

McCurdy  
 son, '02  
 nan, '03  
 ane, '02  
 S.P.S.

L.L.D.,  
 , Q.C.  
 Ph.D.  
 D.D.

## FENCING CLUB

### Officers.

Hon. President.....J. O. Falconbridge, B.A.  
 President.....G. M. Bertram, S.P.S.  
 Vice-President .....J. R. Roaf, S.P.S.  
 Sec.-Treas.....W. A. Duff, S.P.S.  
 Curator .....G. E. Smith, '02  
 Maitre d'Armes .....Sergeant Williams

Three Spring Tournaments:—  
 Senior, Beginners, and Intercolle-  
 giate.

## WOMEN'S FENCING CLUB

### Officers.

Hon. President .....Mrs. Needler  
 President.....Miss E. E. Conlin, '01  
 Vice-President .....Miss M. Watt, '01  
 Sec.-Treas. ....Miss M. Archer, '02  
 Curator .....Miss Norton, '03



## Musical Organizations.

### HARMONIC CLUB

#### Officers.

Hon. President.....	W. J. Loudon, B.A.
President .....	G. F. McFarland, '02
Vice-President .....	H. L. Lazier, '01
Sec. Treas.....	F. H. Phipps, '02
Curator ..	W. H. Ingram, '02
Business Manager....	W. A. Gourlay, S.P.S.

This Club was formed on March 22nd, 1899, and has for its object the unifying of the different musical organizations of the University and the supervision of all musical matters, in order that a high standard of musical ability might be maintained. An annual tour of the principal cities of the Province is made.

### LADIES' GLEE CLUB

#### Officers.

Hon. President.....	Mrs. Fraser
President.....	Miss J. T. A. Robertson, '01
Vice-President.....	Miss A. E. Crane, '01
Secretary.....	Miss C. McMurtry, '03
Treasurer.....	Miss R. Cameron, '03
Curator.....	Miss A. Wright, '02
Pianist .....	Miss C. Allen, '03

The Ladies' Glee Club holds an annual concert which is well worthy of the support of every student in the University.

## Other College Societies.

### UNIVERSITY COLLEGE LITERARY AND SCIENTIFIC SOCIETY

#### Officers.

President .....	S. Casey Wood, B.A.
1st Vice-President .....	J. L. McPherson, '01
2nd " .....	W. A. Craick, '02
3rd " .....	J. C. Ross, '03
Recording Secretary .....	E. F. Burton, '01
Curator .....	E. P. Potvin, '01
Corresponding Sec'y .....	R. H. Barrett, S.P.S.
Treasurer .....	W. C. Bray, '02
Sec. of Committees .....	W. J. Baird, '03
Historical Secretary .....	C. E. Rowland, '01
4th Year Councillor .....	R. A. Smillie, '01
3rd " " .....	J. R. Bell, '02
2nd " " .....	A. E. Honeywell, '03
3rd Year S.P.S. " .....	J. M. Fotheringham
2nd " " " .....	H. S. Barber

Two First Year Representatives to be elected in the Fall.

The objects of this Society are twofold:—To encourage literary and scientific pursuits and public speaking, and to manage such affairs and to discuss such questions as properly come within the province of the student body of the University of Toronto.

Public debates with Queen's and McGill Universities and an oratorical contest are held annually.

Meetings are held in the Students' Union Building every Friday even-

ing a  
term  
Th  
\$1.00  
1901  
Th  
equip  
its m

INT  
IN

Th  
Unic  
serie  
sent  
com  
nual  
last  
Vict  
McM  
final  
the  
lege  
year  
Ir  
the  
give  
cent  
T  
1899

Hon  
"  
Pres  
Sec.  
E.  
Pres  
Sec.  
T. F  
J. H  
T. H  
G. A  
E. I

ing at eight o'clock during the two terms.

The annual fee of the Society is \$1.00 if paid before January 1st, 1901, otherwise \$1.50.

The Society furnishes a well-equipped reading room for the use of its members.

### INTERCOLLEGIATE DEBATING UNION OF TORONTO.

The Intercollegiate Debating Union was formed in 1898 and a series of debates between the representatives of the different Colleges composing the Union is held annually. Among the Colleges entered last year were University College, Victoria, Knox, Wycliffe, Trinity, McMaster and Osgoode. In the finals Knox defeated Victoria for the championship. University College held the championship the first year.

In these debates 40 per cent. of the values awarded the debaters is given for their delivery and 60 per cent. for matter.

The officers of the Union for 1899-1900 were:—

Hon. President .....	Dr. G. R. Parkin
" Vice-President....	N. W. Hoyles, Q.C.
President .....	W. J. Knox, M.A.
Sec.-Treas.....	G. H. Wilson, '00

#### Executive Committee:

President, W. J. Knox.....	(Knox College)
Sec.-Treas. G. H. Wilson..	(Wycliffe College)
T. F. Battle .....	(Osgoode Hall)
J. H. Osterhout.....	(Victoria College)
T. H. Cornish .....	(McMaster College)
G. A. Cornish.....	(University College)
E. P. S. Spencer.....	(Trinity College)

## WOMEN'S LITERARY SOCIETY

### Officers.

Hon. President .....	Miss E. Balmer, B.A.
President .....	Miss W. A. Hutchison, '01
Vice-President .....	Miss A. B. Francis, '01
Recording Secretary .....	Miss J. Houston, '02
Treasurer .....	Miss B. King, '02
Cor. Secretary .....	Miss Guthrie, '03
4th Year Representative .....	Miss C. A. Ward, '01
3rd " " .....	Miss M. V. Bibby, '02
2nd " " .....	Miss I. R. McCurdy, '03

## CLASSICAL ASSOCIATION

### Officers.

President .....	Prof. Maurice Hutton
1st Vice-President .....	E. J. Kylie, '01
2nd Vice-President .....	Miss C. L. Mott, '02
Secretary .....	E. R. Paterson, '02
Treasurer .....	F. P. Meghan, '03
4th Year Councillor .....	Miss F. M. Wicher, '01
2nd " " .....	Miss I. R. McCurdy, '03
First Year Councillor to be elected in October.	

## MATHEMATICAL AND PHYSICAL SOCIETY

### Officers.

President .....	H. J. Dawson, B.A.
1st Vice-President .....	C. Engler, '01
2nd Vice-President .....	Miss H. E. Wigg, '01
Sec. Treas. ....	R. M. Stewart, '02
Cor. Secretary .....	E. F. Burton, '01
4th Year Councillor .....	F. H. Wood, '01
3rd " " .....	M. W. McHugh, '02
2nd " " .....	Miss L. Johnson, '03
Rep. from Phy. and Chem. ..	W. C. Bray, '02

PHIL

Hon. Pr  
Hon. Vi  
Preside  
1st Vice  
2nd  
Secretar  
Treasur  
4th Yea  
3rd "

NAT

Preside  
1st Vice  
2nd  
Record  
Corresp  
Treasur  
Curator  
4th Yea  
3rd "  
2nd "  
A Fir  
in Octo

POLI

Hon. Pr  
Preside  
1st Vice  
2nd  
Secreta  
Treasur  
4th Yea  
3rd "  
2nd "  
First  
Autum

## PHILOSOPHICAL SOCIETY

### Officers.

Hon. President.....A. H. Abbot, B.A.  
Hon. Vice-President..F. Tracy, B.A., Ph.D.  
President.....A. I. Fisher, '01  
1st Vice-President.....R. J. Younge, '02  
2nd ".....To be elected  
Secretary.....A. J. Johnston, '01  
Treasurer.....W. H. Wood, '01  
4th Year Rep.....G. E. Porter, '01  
3rd ".....Miss Downing, '02

## NATURAL SCIENCE ASSO- CIATION

### Officers.

President.....R. R. Bensley, B.A, M.B.  
1st Vice-President.....H. A. Granger, '01  
2nd ".....Miss L. Darling, '01  
Recording Secretary....F. G. T. Lucas, '01  
Corresponding Secretary..W. C. Klotz, '02  
Treasurer.....W. O. Walker, '02  
Curator.....J. A. Younie, '03  
4th Year Representative..L. E. Embree, '01  
3rd ".....W. H. F. Addison, '02  
2nd ".....C. H. Russell, '03

A First Year Representative to be elected  
in October.

## POLITICAL SCIENCE ASSO- CIATION

### Officers.

Hon. President.....S. M. Wickett, Ph.D.  
President.....E. M. Wilcox, '01  
1st Vice-President.....F. H. Phipps, '02  
2nd ".....D. B. Gillies, '03  
Secretary.....W. J. Hanley, '01  
Treasurer.....T. N. R. Phelan, '02  
4th Year Councillor.....E. P. Potvin, '01  
3rd ".....F. H. Broder, '02  
2nd ".....A. E. Honeywell, '03

First Year Councillor to be elected in  
Autumn Term.

## MODERN LANGUAGE CLUB.

### Officers.

Hon. President .....	J. H. Cameron, M.A.
President .....	N. S. Shenstone, '01
1st Vice-President .....	R. J. Dickinson, '02
2nd " .....	Miss J. Forrest, '01
Cor. Secretary .....	J. A. Furse, '01
Rec. Secretary .....	C. I. Gould, '02
Treasurer .....	S. A. Cudmore, '03
Assistant Treas. ....	Miss C. I. Tapscott, '02
2nd Year Rep. ....	Miss M. L. McGarry, '03

Two Representatives for First Year to be elected in October.

## ORIENTAL SOCIETY.

### Officers.

Hon. President. ....	Prof. J. F. McCurdy,
	Ph.D., LL.D.
Hon. Vice-Pres. ....	Prof. J. F. McLaughlin,
	M.A., B.D.
President .....	G. Eadie, '01
Vice-President .....	J. J. McMartin, '01
Sec. Treas .....	A. Thompson, '02
4th Year Representative ..	D. Urquhart, '01
3rd " .....	J. F. Fox, '02
2nd " .....	T. McD. Kerr, '03

## CHESS CLUB

### Officers.

Hon. President .....	Prof. James Mavor
President .....	N. S. Shenstone, '01
Vice-President .....	E. M. Ashworth, '01
Secretary .....	F. H. Clappison, '02
Treasurer .....	J. A. Sutherland, '03
S. P. S. Representative .....	J. Algie, S.P.S.

Presid  
1st Vi  
2nd V  
Secret  
Treas  
Orato  
Judge  
Athle  
Critic  
Poet  
Proph  
Histor

Counc

Presid  
1st Vi  
2nd V  
Secret  
Treas  
Music  
Orato  
Proph  
Athlet  
Poetes  
Judge  
Critic

Histor

Counc



LUB.

, M.A.  
ne, '01  
on, '02  
est, '01  
rse, '01  
uld, '02  
ore, '03  
ott, '02  
rry, '03  
r to be

TAM

dy,  
L.D.  
nlin,  
B.D.  
lie, '01  
in, '01  
on, '02  
rt, '01  
ox, '02  
rr, '03

Mavor  
ae, '01  
ch, '01  
on, '02  
ad, '03  
S.P.S.

## CLASS SOCIETIES

'00.

President.....	G. F. Kay
1st Vice-President.....	Miss M. M. Lang
2nd Vice-President.....	W. G. Harrison
Secretary.....	W. G. Wilson
Treasurer.....	W. J. Donovan
Orator.....	J. F. M. Stewart
Judge.....	A. H. R. Fairchild
Athletic Director.....	H. D. Graham
Critic.....	G. M. Stewart
Poet.....	P. A. Greig
Prophetess.....	Miss C. C. Cockburn
Historians.....	{ Miss I. S. Butterworth E. A. Gray
Councillors.....	{ Miss G. McDonald Miss K. McCallum F. E. Brown R. D. Hume

'01.

President.....	E. F. Burton
1st Vice-President.....	Miss M. Watt
2nd Vice-President.....	C. P. McGibbon
Secretary.....	R. A. Cassidy
Treasurer.....	J. E. Robertson
Musical Director.....	H. M. P. Deroche
Orator.....	W. W. McLaren
Prophet.....	G. W. Clark
Athletic Director.....	A. F. Aylesworth
Poetess.....	Miss C. I. Barr
Judge.....	N. S. Shenstone
Critic.....	J. T. Mulcahy
Historians.....	{ Miss E. E. Conlin R. Dan. Keefe
Councillors.....	{ W. J. Hanley W. A. Greene Miss L. Darling

'02.

President .....	J. A. Soule
1st Vice-President .....	Miss M. M. Philipps
2nd Vice-President .....	A. E. Hamilton
Secretary .....	H. T. Wallace
Treasurer .....	E. R. Paterson
Musical Director .....	C. W. Darling
Athletic Director ..	S. P. Biggs
Judge .....	H. J. Symington
Critic .....	J. M. Denholme
Orator .....	R. B. B. Cochrane
Prophetess .....	Miss C. L. Mott
Poetess .....	Miss B. King
Historians .....	{ Miss M. E. Marshall
	{ Miss A. May
Councillors .....	{ Miss J. M. Easson
	{ Miss M. M. McMahan
	{ A. A. Magee
	{ W. A. Little

'03.

President .....	J. C. Ross
1st Vice-President .....	Miss E. H. Weir
2nd Vice-President .....	Miss M. L. McGarry
Secretary .....	S. A. Cudmore
Treasurer .....	A. G. Brown
Musical Director .....	Miss F. Dignam
Athletic Director .....	R. B. Fudger
Critic .....	Miss C. N. McMurtry
Prophet .....	W. M. Morrison
Poetess .....	Miss G. C. Pringle
Orator .....	R. E. DeLury
Judge .....	H. G. O'Leary
Historians .....	{ Miss I. R. McCurdy
	{ H. C. Bell
	{ Miss P. I. Guthrie
	{ Miss G. I. Rowan
Councillors .....	{ Miss A. F. Burt
	{ H. M. Darling
	{ W. W. Hutton
	{ C. E. Clark
Color Committee .....	{ Miss D. G. Cook
	{ Miss M. W. Moore
	{ D. B. Gillies
	{ F. C. McGuire

Stu

"T  
every  
mic y  
ment  
Litera  
studen  
depend  
studen  
scripti

Editor-

4th Year

3rd Year

2nd Year

S. P. S.

Incor  
sentati

Manage

4th Year

3rd Year

2nd Year

S. P. S.

Thi  
the w  
versit

## Student Publications

### "THE VARSITY"

"THE VARSITY" is published every Wednesday during the academic year under the joint management of the Women's and Men's Literary Societies. This is the students' paper, and its success depends upon the attitude of each student towards it. Annual subscription, \$1.

#### Editorial Board.

Editor-in-Chief ..... E. M. Wilcox, '01

4th Year Representatives { Miss F. M. Wicher  
E. J. Kylie  
R. A. Cassidy  
F. H. Wood

3rd Year Representatives { Miss C. L. Mott  
R. J. Younge  
A. E. Hamilton  
G. F. McFarland

2nd Year Representatives { Miss F. E. Brown  
D. B. Gillies  
G. M. Darling

S. P. S. .... W. A. Gourlay

Incoming First Year will elect one Representative.

#### Business Board.

Manager ..... J. E. Robertson

4th Year { Miss F. Cole  
A. F. Aylesworth

3rd Year { Miss M. Archer  
A. Martin

2nd Year ..... R. De Lury

S. P. S. { W. E. Douglas, B.A.  
George Bertram

### "SESAME."

This is the annual publication of the women undergraduates of University College. Price 50 cts.

### **Editorial Board.**

Editor-in-Chief..Miss A. Caroline Macdonald  
4th Year Represent'e....Miss J. Forrest, '01  
3rd Year ".....Miss J. M. Bell, '02  
2nd Year ".....Miss M. Moore, '03

### **Business Board.**

Business Manager.....Miss M. Watt  
3rd Year Repres't'e...Miss E. L. E. Peers, '02  
2nd Year ".....Miss G. Rowan, '03

### **"COLLEGE TOPICS."**

A paper published weekly and devoted to College news.

Editor .....F. E. Brophy  
Business Manager .....R. J. Hamilton

### **"TORONTONENSIS."**

This is the Year Book of the Graduating Class. It has been published annually for the last three years.

Editor-in-Chief .....E. H. Cooper  
Business Manager .....J. Morgan

### **Y.M.C.A. PUBLICATIONS.**

#### **The Students' Hand Book**

Is published annually by the Young Men's Christian Association under the direction of the General Secretary and Fall Campaign Committee. It is distributed free to the Students in the Fall.

#### **The Association Report**

Gives annually a summary of the previous year's work. This Report may be obtained at the General Secretary's office.

## Professors and Lecturers' Addresses.

### PHYSICS.

President Loudon, M.A., LL.D., 83  
St. George St.

W. J. Loudon, B.A., 169 Madison  
Ave.

C. A. Chant, B.A., 74 Prince Arthur  
Ave.

J. C. McLennan, B.A., Ph.D., 7  
Russel St.

G. A. Anderson, M.A., 652 Spadina  
Ave.

### MATHEMATICS.

Alfred Baker, M.A., 19 Madison  
Ave.

Alfred T. DeLury, B.A., 63 Prince  
Arthur Ave.

H. J. Dawson, B.A.,

### CHEMISTRY.

Wm. Lash Miller, B.A., Ph.D., 100  
St. Vincent St.

F. B. Allan, B.A., 550 Spadina Ave.

F. B. Kenrick, B.A., Ph.D., 209  
John St.

Miss C. C. Benson, B.A.,

### BIOLOGY.

R. Ramsay Wright, M.A., B.Sc.,

A. B. Macallum, B.A., Ph.D., 59  
St. George St.

E. C. Jeffrey, B.A., 62 St. George  
St.  
R. R. Bensley, B.A., M.B., 1544  
Queen St. W.  
Jas. Stafford, B.A., Ph.D., 149  
Howland Ave.

#### MINERALOGY AND GEOLOGY.

A. P. Coleman, M.A., 476 Huron St.  
W. A. Parks, B.A., 14 Washington  
Ave.

#### CLASSICS.

Maurice Hutton, M.A., 67 Queen's  
Park.  
J. Fletcher, M.A., LL.D., 3 Univer-  
sity Crescent.  
W. S. Milner, M.A., 33 Sussex Ave.  
A. Carruthers, M.A., Macdonell Ave.  
G. W. Johnston, B.A., Ph.D., 13  
St. Andrew St.

#### ENGLISH.

W. J. Alexander, B.A., Ph.D., 110  
Avenue Road.  
D. R. Keys, M.A., 87 Avenue Road.

#### FRENCH.

J. Squair, B.A., 41 Major St.  
J. H. Cameron, M.A., \_\_\_\_\_  
St. Elme de Champ, 8 Oxford St.

#### GERMAN.

W. H. vanderSmitten, M.A., 15  
Surrey Place.  
G. H. Needler, B.A., Ph.D., 50  
Avenue Road.  
P. Toews, M.A., Ph.D., 92 Czar St.



ITALIAN AND SPANISH.

W. H. Fraser, B.A., 67 Madison Ave.  
E J. Sacco, 17 Russell St.

ORIENTAL LANGUAGES.

J. F. McCurdy, Ph.D., LL.D., 72 Spadina Road.  
R. G. Murison, M.A., B.D., 23 Surrey Place.

HISTORY.

G. M. Wrong, M.A., 469 Jarvis St.

POLITICAL SCIENCE.

James Mavor, 8 University Crescent.  
Hon. D. Mills, LL.B., London, Ont.  
Hon. Mr. Justice Proudfoot, 3 Queen's Park.  
S. Morley Wickett, B.A., Ph.D., 339 Berkeley St.  
J. W. Mitchell, B.A., 614 Spadina Ave.

PHILOSOPHY.

J. G. Hume, M.A., Ph.D., 650 Church St.  
A. Kirschmann, M.A., Ph.D., 10 Prince Arthur Ave.  
F. Tracy, B.A., Ph.D., 74 Wilcox St.  
A. H. Abbott, B.A., 500 Church St.

---

# TIME TABLE OF LECTURES—MICHAELMAS TERM.

A.M.	MONDAY	TUESDAY	WEDNES.	THURS.	FRIDAY	SATURDAY
9						
10						
11						
12						

# TIME TABLE OF LECTURES—MICHAELMAS TERM.

P.M.	MONDAY	TUESDAY	WEDNES.	THURSDAY	FRIDAY	SATURDAY

# TIME TABLE OF LECTURES—MICHAELMAS TERM.

P.M.	MONDAY	TUESDAY	WEDNES.	THURS.	FRIDAY	SATURDAY
2						
3						
4						
5				Y.M.C.A.		

BIBLE CLASS—Sunday, at 9.30 a.m.  
 PRAYER MEETING every ..... morning at 8.30.

# TIME TABLE OF LECTURES-EASTER TERM.

A.M.	MONDAY	TUESDAY	WEDNES.	THURS.	FRIDAY	SATURDAY
9						
10						
11						
12	MONDAY	TUESDAY	WEDNES.	THURS.	FRIDAY	SATURDAY

TIME TABLE OF LECTURES-EASTER TERM.

# TIME TABLE OF LECTURES-EASTER TERM.

P.M.	MONDAY	TUESDAY	WEDNES.	THURS	FRIDAY	SATURDAY

# TIME TABLE OF LECTURES--EASTER TERM.

P.M.	MONDAY	TUESDAY	WEDNES.	THURS	FRIDAY	SATURDAY
2						
3						
4						
5				Y.M.C.A.		

BIBLE CLASS—Sunday at 9.30 a.m.

PRAYER MEETING every.....morning at 8.30.

# CASH ACCOUNT—OCTOBER.

TIME TABLE OF LIGHTS—EASTERN TERM.

NOVEMBER 10, 1894. MONDAY. 10:30 AM. 10:30 PM.

		REC'D.	PAID.
10	10:30 AM		
	10:30 PM		
	10:30 AM		
	10:30 PM		
11	11:00 AM		
	11:00 PM		
	11:00 AM		
	11:00 PM		
12	12:00 AM		
	12:00 PM		
	12:00 AM		
	12:00 PM		
1	1:00 AM		
	1:00 PM		
	1:00 AM		
	1:00 PM		
2	2:00 AM		
	2:00 PM		
	2:00 AM		
	2:00 PM		
3	3:00 AM		
	3:00 PM		
	3:00 AM		
	3:00 PM		
4	4:00 AM		
	4:00 PM		
	4:00 AM		
	4:00 PM		
5	5:00 AM		
	5:00 PM		
	5:00 AM		
	5:00 PM		
6	6:00 AM		
	6:00 PM		
	6:00 AM		
	6:00 PM		
7	7:00 AM		
	7:00 PM		
	7:00 AM		
	7:00 PM		
8	8:00 AM		
	8:00 PM		
	8:00 AM		
	8:00 PM		
9	9:00 AM		
	9:00 PM		
	9:00 AM		
	9:00 PM		



RECEIVED - MAY 22 1963

PAID.

---

CASH ACCOUNT—DECEMBER.

[illegible]

# CASH ACCOUNT—JANUARY.

R.

PAID.

REC'D.

PAID.



CASH ACCOUNT - MARCH.

51





# CASH ACCOUNT—MAY.

PAID.

REC'D.

PAID.

## MEMORANDA.

## MEMORANDA

MEMORANDA.

MEMORANDA

MEMORANDA.



**MEMORANDA.**

MEMORANDA.

## MEMORANDA

## Advertisements

### NOTICE

Ourselves and others of the same  
have been directed to the fact that  
there has been some mistake in  
these business notices and that  
whose life appears in the book.  
The association recommended there  
as church members, and so forth  
who give their satisfaction in  
their respective

MEMORANDA.

ON A GOOD THING  
Nasmith's  
SWISS LAUNDRY

# Advertisements

Cleaning, Dyeing, Pressing and  
Rep.  
Nasmith's  
Chocolates

Telephones 1233 and 1150  
50, 60 and 75c per lb.

FOR BEST HAIR CUTTING

## ...NOTICE...

ONE thousand copies of this book have been distributed free. The cost has been borne entirely by those business houses and others whose ads. appear in the book. The Association recommend them as thoroughly reliable, and as men who give entire satisfaction in their respective lines.

A GOOD NAME  
ON A —  
GOOD THING

## Nasmith's Chocolates

Are so good, and Nasmith knows  
that what is in them is so good  
that there is no hesitation in put-  
ting the name "Nasmith" on every  
piece.

You know you're getting some-  
thing good when you get

## Nasmith's Chocolates

50, 60 and 75c. per lb.

	PHONES
53 King Street West	740
51 King Street East	1410
152 Yonge Street	1689
470 Spadina Avenue	713
63 Jarvis Street	789
PARKDALE	
1408 Queen Street West	5479



WM. HENRY ACHESON

MERCHANT TAILOR

281—COLLEGE STREET—281

STUDENTS: I want your trade, and to secure  
it have in stock the choicest materials.

My Aim: To have and to hold—your cus-  
tom.

## SWISS LAUNDRY

ALLEN MANUFACTURING COMPANY  
PROPRIETORS

*Cor. Simcoe and Pearl Sts.*

TORONTO

LAUNDRY WORK OF ALL KINDS

REPAIRING AND DARNING FREE OF CHARGE

...ALSO...

Cleaning, Dyeing, Pressing and  
Repairing of Tweed and  
Cloth Suits, etc.

On request our Waggoners call regularly at  
all Colleges, Boarding Houses, etc.

Telephones 1260 and 1150

FOR BEST HAIR CUTTING

GO TO

BROADWAY  
BARBER SHOP

464 SPADINA AVE.

W. KENNEDY, Prop.

***The Biggest Book Store  
in Canada.***

**THE PUBLISHERS'  
SYNDICATE**

Limited

**7 & 9 KING ST. EAST  
TORONTO**

**We carry a full line of**

***University and  
College Text Books***

**and can secure for you**

***Any Book on  
Any Subject  
Anywhere Published***

**Promptly and at Moderate Cost.**

**YOU WILL SAVE MONEY  
BY BUYING DIRECT  
FROM US**

**SEND FOR OUR CATALOGUE**

**The  
Publishers' Syndicate  
Limited**

**7 & 9 KING ST. EAST  
TORONTO**



*E. Boisseau & Co*  
*Wholesale Tailors.*  
*Toronto.*

*Retail Department*

## FROM MAKER TO WEARER

---

"Tiger Brand" clothing and  
furnishing goods for men and  
boys—ready-made.

Students!

We know we sell the finest  
ready-made clothing you can  
buy. Best styles—nicest fabrics  
—beautifully tailored.

Suits—\$5.00 to \$27.50.

Overcoats—\$5.00 to \$22.00.

Fine furnishing goods.

Your money back if you want it.

---

**E. BOISSEAU & CO.**

**Temperance and Yonge**

## Newton's Shoe House

Costly thy habit as thy purse can buy.  
But not expressed in fancy; rich not gaudy;  
For the apparel oft proclaims the man —  
HAMLET.

*The Gospel of Good Shoes*  
Headquarters for Boots, Shoes,  
and Rubbers.

**CHAS. NEWTON,**  
292 College Street.

## The Dining Hall

As good  
as ever

**556 YONGE ST.**

Within ten minutes' walk  
of the Colleges

**TO STUDENTS:**

*A 21-Meal Ticket for \$2.25*

References: Our Patrons



**MUNSHAW'S**

*Bicycle and  
Carriage Livery*

VICTORIAS, COUPES,  
ETC.

**175 McCAUL ST.**

Bicycles Enamelled  
and Repaired

TELEPHONE 733

# VANNEVAR & Co.

Varsity and Medical  
Text Books

AT LOWEST CASH PRICES

Mail Orders a Specialty

438 Yonge St., Opp. Carlton St.

Gourlay,  
Winter &  
Leeming

...188...  
Yonge St.

SELL . . .  
RENT . . .  
EXCHANGE

PIANOS

MOVE . . .  
STORE . . .  
PACK . . .

PIANOS

TUNE . . .  
REPAIR . . .  
RE-POLISH

PIANOS

GOURLAY, WINTER & LEEMING

J. F. & W. E. ORR

290 College Street

BICYCLE DEALERS

First-class Repairing a Specialty,  
Skates, Hockey Sticks, etc.



For Up-to-date Footwear

Go to **TENNIS AND  
FOOT BALL SHOES**

**J. Brotherton** 550 Yonge  
Street

For Hockey Boots we cannot be beat.

When you are looking  
for a good

**Caterer and  
Confectioner**

Go to

**COLES**

719-721 Yonge Street

PHONES { 3423  
              { 3981

Reception Refreshments our  
specialty.



## WE ARE TOOTING OUR HORN



"Each toot is new."

New Goods,  
New Goods,  
New Goods.

We carry in stock one of the neatest ranges of Suitings to be had in any house in the city for \$11.00 in "Tweeds,"

"Worsteds," and "Serges." Choice patterns in our \$4 trouserings.

**BERKINSHAW & GAIN, 348 YONGE ST.**

DISCOUNT TO STUDENTS.

## Bogart Studio . . .

PHONE 3075

748 YONGE STREET

Special Attention Given to  
College Work.

OUR PRICES ARE MODERATE

Quotations Given on Application

## J. W. GEDDES

We Frame Photo Groups  
in Art Style at the Lowest  
Prices . . . .

427 SPADINA AVE.

# Renfrew's

5 King St. East

Carry a select Stock of

## Fine Furs and Hats

Fur Show Rooms open  
at all seasons

**Holt, Renfrew & Co.**

5 King St. East, Toronto

85 & 87 Buade St., Quebec

Special discount to Students.

Telephone 3923

## T. R. HAIG'S

Baggage Transfer

....and....

**General Express Line**

**543 YONGE STREET**

**TORONTO**

**Boats and Trains** met when ordered.

**Checks for Baggage** returning to  
city called for on receipt of Telephone Mes-  
sage.

Students coming to city can have baggage  
stored free of charge until obtaining rooms.

"Read good books, enrich your mind  
with noble thoughts."—*Farrer.*

---

## **Books a Young Man Ought to Read**

**First Battles and How to Fight  
them.** Friendly chats with young  
men. By F. A. Atkins. 16mo,  
cloth, 35c.

**Moral Muscle, and How to Use it.**  
A brotherly chat with young men.  
By F. A. Atkins. 12mo, cloth, 35c.

**The Dream of Youth.** By Hugh  
Black, Edinburgh, author of *Friend-  
ship*. 12mo, decorated boards, 30c.

**Thoroughness.** Talks to young  
men. By Thain Davidson, D D.  
12mo, cloth, 35c.

**The Kingship of Self Control.**  
By Wm. George Jordan. 12mo,  
decorated boards, 30c.

**Confidential Talks with Young  
Men.** By Lyman B. Sperry, M.D.  
12mo, cloth, 75c.

---

*Ask for our complete Catalogue*

---

**FLEMING H.  
REVELL COMPANY**

**154 Yonge Street**

**TORONTO**

Also at CHICAGO and NEW YORK

# Printing

As we have been doing printing of all kinds for the College Societies for a number of years, our work is well known, and we need not do more than remind the boys that we are still at the same address. We have appropriate crests, cuts, etc., for students' work, and hope to do this year more business than heretofore with the various societies.

## CURRY BROS.

414 Spadina Ave., - Toronto  
Telephone 1878

## FOLLETT'S

FOR AN

## \$18.00 SUIT

181 YONGE STREET

We rent Dress Suits.

**S**TUDENTS desiring profitable employment for vacation will find it to their advantage to call at

**UNDERWOOD & UNDERWOOD,**  
60 Adelaide St. East.

## BANKS.

Bank of British North America—  
Wellington, cor. Yonge.

Bank of Hamilton—34 Yonge.

Bank of Montreal—Yonge, cor.  
Front.

Bank of Toronto—Wellington, cor.  
Church.

Canadian Bank of Commerce—19-25  
King W.; branch, cor. College  
and Spadina ave.

Dominion Bank—cor. King and  
Yonge; branch, cor. Spadina ave.  
and College.

Imperial Bank of Canada—34 Wel-  
lington E.

Merchants' Bank of Canada—13  
Wellington W.

Molsons Bank—King, cor. Bay.

Standard Bank of Canada—cor. Jor-  
dan and Wellington.

Traders' Bank of Canada—cor.  
Yonge and Colborne.

Quebec Bank—cor. King and  
Toronto.

Union Bank—Wellington, opposite  
Jordan.

## LIBRARIES.

Toronto University Library—Queen's  
Park—60,000 volumes.

Public Library—cor. Church and  
Adelaide—100,000 volumes.

Provincial Library—Parliament  
Buildings—60,000 volumes.

Educational Department Library—  
St. James' Square—10,200 vols.

Osgoode Hall Library—cor. Queen &  
University ave.—30,000 volumes.

Canadian Institute Library—58  
Richmond st. E.—7,000 volumes.

## CHURCH DIRECTORY.

### Principal Churches in Main Part of the City.

#### EPISCOPAL.

All Saints'—cor. Sherbourne and  
Wilton ave. Rev. A. H. Baldwin,  
M.A.

Church of the Messiah—cor. Avenue  
road and Dupont st. Rev. John  
Gillespie.

Church of the Redeemer—Bloor and  
Avenue road. Rev. Septimus  
Jones, M.A., Rev. Dyson Hague,  
M.A.

Grace Church—Elm st. Rev. J. P.  
Lewis, M.A.

Holy Trinity—Trinity square. Rev.  
J. Pearson, D.C.L.

St. Alban's Cathedral—cor. Howland  
and Lowther ayes. Rt. Rev.  
Arthur Sweatman.

St. James' Cathedral—cor. King  
and Church sts Rt. Rev. E. A.  
Welch.

St. Luke's—cor. St. Vincent and St.  
Joseph. Rev. John Langtry, D.D.

St. Paul's—Bloor st. E. near Jarvis.  
Rev. Prof. Cody.

St. Peter's—cor. Carlton & Bleeker  
sts. Ven. Archdeacon Boddy.

St. Philip's—cor. Spadina and St.  
Patrick. Rev. Canon Sweeny,  
D.D.

St. Stephen's—cor. College and Bel-  
levue. Rev. A. J. Broughall, M.A.

#### PRESBYTERIAN.

St. James' Square—40 Gerrard st. E.  
Rev. L. H. Jordan, B.D.

Old S  
Ca  
B  
New  
Sin  
Bl  
Knox  
st.  
Ersk  
Ja  
Cook  
sts  
West  
Ch  
Cent  
Gr  
Ta  
Bloor  
Sta  
B  
Colle  
Co  
St. F  
tor  
B.  
Beve  
Be  
nic  
Bloo  
W  
Colle  
Pa  
B.  
Imm  
lin  
Jarv  
Ja  
D.  
Wal  
an  
W



Old St. Andrew's—cor. Jarvis and  
Carlton sts. Rev. G. M. Milligan,  
B.A., D.D.

New St. Andrew's—cor. King and  
Simcoe sts. Rev. Armstrong  
Black.

Knox—Queen st. W., near Yonge  
st. Rev. H. M. Parsons, D.D.

Erskine—Caer-Howell st. Rev.  
Jas. Murray, B.A.

Cooke's—cor. Queen and Mutual  
sts. Rev. Wm. Patterson.

Westminster—Bloor st. East, near  
Church st. Rev. Jno. Neil, B.A.

Central—cor. St. Vincent and  
Grosvenor sts. Rev. D. Mc-  
Tavish, D.Sc.

Bloor Street—cor. Huron and Bloor  
Sts. Rev. W. G. Wallace, B.A.,  
B.D.

College Street—cor. Bathurst and  
College sts. Rev. Alex. Gilray.

St. Paul's—cor. Bathurst and Bar-  
ton ave. Rev. G. R. Fasken,  
B.A.

#### BAPTIST.

Beverley Street—cor. Sullivan and  
Beverley sts. Rev. Mr. War-  
nicker.

Bloor Street—cor. North and Bloor  
West. Rev. C. A. Eaton, M.A.

College Street—cor. College and  
Palmerston. Rev. S. S. Bates,  
B.A.

Immanuel—cor. Jarvis and Wel-  
lington sts. Rev. Dr. Welton.

Jarvis Street—cor. Gerrard and  
Jarvis sts. Rev. B. D. Thomas,  
D.D.

Walmer Road—cor. Lowther ave.  
and Walmer road. Rev. W.  
W. Weeks.

### CONGREGATIONAL.

Bond Street—cor. Wilton ave. and  
Bond st. Rev. Morgan Wood,  
D.D.

Olivet—Hazleton ave. Rev. F. H.  
Thomas, M.A.

Northern—Church st. near Alex-  
ander. Rev. T. B. Hyde.

Western—327 Spadina ave. Rev.  
J. W. Pedley.

Zion—cor. College and Elizabeth  
sts. Rev. S. S. Craig.

### LUTHERAN.

Deutsch Evangelischen—116 Bond  
st. Rev. P. W. Meuller.

### DISCIPLES OF CHRIST.

Church of Christ—Cecil st. Rev.  
S. J. Duncan-Clark.

### METHODIST.

Agnes Street—cor. Teraulay and  
Agnes sts Rev. Dr. Eby.

Bathurst—cor. Lennox. Rev. C.  
E. Manning.

Broadway—cor. Spadina and Col-  
lege. Rev. Dr. Chown.

Carlton Street—near Yonge st.  
Rev. G. R. Turk.

Central—con. Bloor east and Park  
road. Rev. S. Kapelle.

Elm Street—between Yonge and  
Teraulay sts. Rev. Dr. German.

Metropolitan—cor. Queen east and  
Church sts. Rev. R. P. Bow es,  
B.A.

New Richmond—McCaul street.  
Rev. J. T. Morris.

Sherbourne Street—cor. Carlton.  
Rev. James Al'en.

St. Paul's—Avenue road. Rev.  
Alfred Brown.

Trinity—Bloor west, cor. Robert st.  
Rev. J. Odery.

### ROMAN CATHOLIC.

Our Lady of Lourdes—cor. Sher-  
bourne and Earl sts. Rev. J. M.  
Cruise.

St. Basil's—St. Joseph st. Rev. L.  
Brennan.

St. Michael's Cathedral—cor. Bond  
and Shuter sts. Rev. F. Ryan.

St. Patrick's—184 William st. Very  
Rev. P. I. Ward.

### STREET CAR ROUTES.

YONGE STREET.—One Blue Light.—From  
North Toronto Station, by Yonge and  
Front streets to Union Station; return-  
ing by Front and Yonge streets to North  
Toronto.

KING { BALSAM AVE.—Two White Lights.  
KINGSTON ROAD.—One White Light.  
From cor. Roncesvalles avenue and King,  
by King and Queen to Balsam avenue;  
returning by Queen and King to Ronces-  
valles.

QUEEN STREET.—One Green Light.—From  
High Park, Queen, Yonge, Front, George,  
King, Yonge, Queen to High Park.

CHURCH STREET.—Two Red Lights.—From  
Union Station by Front, Church, Bloor,  
North Sherbourne to Glen road and  
return.

COLLEGE AND YONGE.—Blue and Yellow  
Lights.—From Yonge and Front by Front,  
Church, King, Yonge, College to Lans-  
downe avenue; returning by College and  
Yonge.

CARLTON AND COLLEGE.—One Yellow Light.  
—From Lansdowne avenue by College,  
Carlton, Parliament, Gerrard to Sumach  
street and return.

BELT LINE.—One Red Light.—King, Spa-  
dina, Sherbourne, Bloor.

**WINCHESTER.**—Blue and Red Lights.—From Sumach street by Winchester, Parliament, Carlton, Yonge, King, York, Front to Union Station; returning by Front to Yonge.

**PARLIAMENT.**—White and Green Lights.—From Pape avenue by Gerrard, Parliament, Queen, Sherbourne, King, Church, Front to Union Station; returning by York, King, Sherbourne, Queen, Parliament, Gerrard to Pape avenue.

**BROADVIEW.**—Red and Green Lights.—From Don Mills road by Broadview, Queen, Yonge to Front; returning by Church, Queen, Broadview to Don Mills road.

**DOVERCOURT.**—Two White Lights.—From Bloor by Dovercourt, College, Ossington, Dundas to Queen.

**BLOOR AND McCAUL.**—Yellow and White Lights.—From Lansdowne avenue, by Bloor, Spadina, College, McCaul, Queen, York to Front; returning by Front, Yonge, Queen, etc.

**AVENUE ROAD.**—Two White Lights.—From Yonge, by Bloor and Avenue road to Davenport.

**BATHURST.**—Red and White Lights.—From Dupont street by Bathurst, King, York to Front; returning by Front, Church, King, Bathurst.

**QUEEN AND DUNDAS.**—Two Green Lights.—From Toronto Junction, by Dundas, Queen, Yonge to Front; returning by Front, George, King, Yonge, Queen, Dundas.

3 Scott a  
4 Front a  
5 Front a  
6 Bay a  
7 Front a  
8 Parliam  
(Front  
9 Simcoe  
10 Lake  
Bridge  
12 King a  
13 King a  
14 King a  
15 King a  
16 King a  
17 Front a  
18 Front a  
19 Front  
21 King a  
22 New C  
City  
23 King a  
24 King a  
25 Esplan  
26 Front  
27 Christ  
28 King a  
29 King a  
31 Yonge  
32 Yonge  
34 Yonge  
35 Bond  
36 Yonge  
37 Yonge  
38 Yonge  
39 St. Mi  
41 Queen  
42 Queen  
43 Queen  
45 Queen  
46 King  
and  
47 Queen  
48 Queen  
49 Trini  
51 Quee  
52 Quee  
53 Queen

## Fire Alarm Boxes

- |  |   |
|--|---|
| 3 Scott and Wellington                     | 54 Jarvis and Wilton Av                       |
| 4 Front and Church                         | 56 Gerrard and Church                         |
| 5 Front and Yonge                          | 57 Gerrard & Sherbo'rne                       |
| 6 Bay and Esplanade                        | 61 Jarvis and Carlton                         |
| 7 Front and York                           | 62 Jarvis and Wellesley                       |
| 8 Parliament Buildings<br>(Front St. West) | 63 Sherbourne and Wel-<br>lesley              |
| 9 Simcoe and Esplanade                     | 64 Sherbourne and Isa-<br>bella               |
| 10 Lake and York Sts<br>Bridge             | 65 Charles and Jarvis                         |
| 12 King and Bay                            | 67 Charles and Church                         |
| 13 King and York                           | 71 Bay and Richmond                           |
| 14 King and John                           | 72 Louisa and Teraulay                        |
| 15 King and Spadina Av                     | 73 Agnes and Elizabeth                        |
| 16 King and Bathurst                       | 74 Teraulay and Hayter                        |
| 17 Front and Bathurst                      | 75 Elizabeth & College                        |
| 18 Front and Spadina Av                    | 76 Christopher and<br>Chestnut                |
| 19 Front and John                          | 81 Simcoe & Caer Howell                       |
| 21 King and Yonge                          | 82 Beverley and D'Arcy                        |
| 22 New Court House and<br>City Buildings   | 83 Beverley and College                       |
| 23 King and Church                         | 84 Harbord and Huron                          |
| 24 King and Jarvis                         | 85 Bloor and Walmer Rd                        |
| 25 Esplan'e and W. Mkt                     | 86 Bloor and Palmerston<br>Av                 |
| 26 Front and Frederick                     | 87 Palmerston Av. and<br>Robinson             |
| 27 Christie, Brown & Co                    | 89 Manning Av. and<br>Harbord                 |
| 28 King and Sherbourne                     | 91 Grosvenor and St.<br>Vincent               |
| 29 King and Berkeley                       | 92 St. Alban and St.<br>Vincent               |
| 31 Yonge and Adelaide                      | 93 Yonge and Wellesley                        |
| 32 Yonge and Queen                         | 94 Czar and North                             |
| 34 Yonge and Shuter                        | 95 Yonge and Isabella                         |
| 35 Bond and Wilton Av                      | 121 Tor. Elec. Light Co.<br>(Espl. and Scott) |
| 36 Yonge and Gould                         | 122 Osgoode Hall                              |
| 37 Yonge and McGill                        | 123 Yonge and Bloor                           |
| 38 Yonge and Wood                          | 124 Yonge (opp. St. Paul's<br>Hall)           |
| 39 St. Michael's Hospital                  | 125 Bloor (opp. St. Paul's<br>Church)         |
| 41 Queen and Elizabeth                     | 126 Cumberl'd & Bellair                       |
| 42 Queen and Simcoe                        | 127 Scollard & Hazelton<br>Av                 |
| 43 Queen and Beverley                      | 128 Avenue Rd. & Bloor                        |
| 45 Queen and Spadina Av                    |   |
| 46 King St. (bet. Portland<br>and Brant)   |   |
| 47 Queen and Bathurst.                     |   |
| 48 Queen and Claremont                     |   |
| 49 Trinity College                         |   |
| 51 Queen and Church                        |   |
| 52 Queen and Jarvis                        |   |
| 53 Queen and Sherbourne                    |   |

# Fire Alarm Boxes—Continued

129 Bloor and St. George	175 Mercer Reformatory
131 Toronto University (Queen's Park)	176 Exhibition Grounds (West End)
132 Avenue Rd. & Elgin Av	178 King and Niagara
133 Elm Av. and Glen Rd	181 St. Claren's Av. (bet. College and Bloor)
134 Davenport Rd. and Belmont	182 Dundas & Norraun
135 Yonge and Belmont	183 Bloor and Dovercourt Rd
136 Yonge & Cottingham	184 Bloor and Symington Av
137 Rosedale & Park Rd	185 Bloor and Dufferin
138 Avenue Rd. and Mc- Master Av	191 Hospital for Sick Children (College Street)
139 Huron & Bernard Av	192 Bathurst and Olive Av
141 Knox College	193 Christie and Essex
142 St. Patrick & Spadina Av	194 Dovercourt Rd. and Hallam Av
143 College & Spadina Av	195 Ruskin & Perth Av
145 Brunswick Av. and Harbord	211 Firstbrook's Factory, King E
146 Bathurst and College	212 Berkeley & Esplan'de
147 College and Clinton	213 Gooderham & Worts' Distillery
148 College & Ossington Av	214 Front and Trinity
149 College and Dufferin	215 Front and Beachall
151 New Parliam't Bldgs. (Queen's Park)	216 King and Sumach
152 Cor. Denison and Grange Av	217 Queen and River
153 St. Patr'k & Bathurst	218 Front and Princess
154 Bellevue Av & Nassau	231 House of Providence
156 Euclid Av. & Arthur	234 Parliament & Queen
157 Dundas & Ossington Av	235 Sydenham & Ontario
158 Arthur and Sully	236 Seaton & Wilton Av
159 Bernard and Bedford Rd	237 Parliament and Oak
162 Queen and Dundas	241 Parliament & Carlton
163 Queen and Lisgar	242 Jail
164 Dufferin & Florence	243 Parliament & Amelia
165 Dundas & Brock Av	245 Winchester and Sack- ville
167 Dovercourt and St. Ann's Rd	246 Sumach and Amelia
168 Brock Av. & Florence	247 Gerrard and River
169 Argyle and Beacons- field Av	248 Broadview Av. and Elliott
171 Central Prison	251 Gerrard and Sackville
172 Niagara & Tecums'h	252 General Hospital
173 Well'gton & Strachan Av	253 Sumach & Wilton Av
174 King, East of Sub- way	254 Queen & Broadview Av
	256 Queen and G. T. R. Crossing

Fire

257 Broadv
Smi
258 Steiner
261 Gooder
Shed
262 Logan
263 Broadv
Gerr
264 DeGra
265 Morse
Av
271 Queen
273 Queen
274 Pape A
275 Queen
Stee
281 Queen
Av
283 Queen
311 Masse
tory
312 Queen
314 Rubb
Loc
315 Lanso
Ma



# Fire Alarm Boxes—Continued

ued  
formatory  
Grounes  
nd)  
Niagara  
s Av. (let.  
and Bloor)  
Sorauren  
Dovercourt  
Symington  
Dufferin  
or Sick  
(College  
and Olive  
nd Essex  
t Rd. and  
Av  
Perth Av  
's Factory,  
Esplan'de  
n & Worts'  
y  
Trinity  
Beachall  
Sumach  
River  
Princess  
Providence  
& Queen  
& Ontario  
Vilton Av  
and Oak  
& Carlton  
& Amelia  
and Pack-  
nd Amelia  
d River  
Av. and  
d Sackville  
ospital  
Wilton Av  
roadview  
G. T. R.

- |  |  |
|--|--|
| 257 Broadview Av. and<br>Smith           | 316 Queen & McDonnell<br>Av                  |
| 258 Steiner and Matilda                  | 317 Sorauren Av                              |
| 261 Gooderham's Cattle<br>Sheds          | 318 Sorauren Av & Fern                       |
| 262 Logan & Langley Av                   | 321 King & Gwynne Av                         |
| 263 Broadview Av and<br>Gerrard          | 323 Empres Crescent and<br>Jameson           |
| 264 DeGrassi & Cumming                   | 324 Home for Incurables<br>(Dunn Av)         |
| 265 Morse and Eastern<br>Av              | 325 King & Jameson Av                        |
| 271 Queen and Pape Av                    | 326 Queen and Ronces-<br>valles Av           |
| 273 Queen and Leslie                     | 327 Lake Shore Rd. (nr.<br>Club House)       |
| 274 Pape Av and Gerrard                  | 341 Exhibition Grounds<br>(East End)         |
| 275 Queen E. (near<br>Steele's Nursery)  | 342 Exhibition Grounds<br>(opp. Grand Stand) |
| 281 Queen and Eastern<br>Av              | 343 Tyndall and Spring-<br>hurst Av          |
| 283 Queen and Elmer Av                   | 412 Corporation Yard<br>(Espl., opp. Fred'k) |
| 311 Massey-Harris Fac-<br>tory (King W.) | 413 Post Office (Ade'e E.)                   |
| 312 Queen and Brock Av                   | 414 Adelaide & Sheppard                      |
| 314 Rubber Works (West<br>Lodge Av)      | 422 House of Industry<br>(Elm St.)           |
| 315 Lansdowne Av and<br>Marion           |  |



# STREET KEY TO MAP.

Abb K<sub>5</sub>  
 Adelaide e Q<sub>4</sub>  
 Adelaide w N to P<sub>4</sub>  
 Admiral rd O<sub>8</sub>  
 Agnes P<sub>5</sub>  
 Alexander Q<sub>6</sub>  
 Albert P<sub>5</sub>  
 Alhambra J<sub>7</sub>  
 Alice P<sub>5</sub>  
 Allen av T<sub>5</sub>  
 Alma av L<sub>5</sub>  
 Amelia R<sub>6</sub> & 7  
 Ann Q<sub>6</sub>  
 Argyle L<sub>5</sub>  
 Armstrong av K<sub>8</sub>  
 Arthur M & N<sub>5</sub>  
 Austra av N<sub>5</sub> & 6  
 Avenue rd P<sub>7</sub> to 9  
 Baldwin O<sub>6</sub>  
 Banks K<sub>6</sub>  
 Bartlett av L<sub>7</sub> & 8  
 Barton av M & N<sub>8</sub>  
 Bathurst N<sub>4</sub> to 8  
 Battye S & T<sub>7</sub>  
 Baxter Q<sub>8</sub>  
 Bay P<sub>4</sub> to 6  
 Beachell S<sub>4</sub>  
 Beatrice M<sub>6</sub>  
 Beaconsfield av L<sub>5</sub>  
 Beatty av J<sub>4</sub> & 5  
 Bedford rd O<sub>7</sub> & 8  
 Bell S<sub>6</sub>  
 Bellair P<sub>7</sub> & 8  
 Bellevue av N<sub>6</sub>  
 Bellwoods av M<sub>5</sub> & 6  
 Belmont P<sub>8</sub>  
 Berkeley R<sub>4</sub> to 7  
 Bernard av O<sub>8</sub>  
 Berryman P<sub>8</sub>  
 Beverley O<sub>5</sub> & 6  
 Birch av P<sub>9</sub>  
 Bishop P<sub>8</sub>  
 Bismarck av Q<sub>7</sub>  
 Blackburn S<sub>6</sub>  
 Blake av M<sub>8</sub>  
 Bleeker R<sub>6</sub> & 7  
 Bloor w J to P<sub>7</sub>  
 Bloor e Q<sub>7</sub>  
 Bolton av T<sub>5</sub> & 6  
 Borden N<sub>6</sub> & 7  
 Boswell av P<sub>8</sub>  
 Bowden av T<sub>7</sub>  
 Breadalbane P<sub>6</sub>  
 Brighton L<sub>8</sub>  
 Broadview av T<sub>5</sub> to 7  
 Brock av K<sub>5</sub> to 7  
 Brockton av K<sub>6</sub>  
 Brookfield L<sub>5</sub>  
 Brown K<sub>5</sub>  
 Brunswick av N<sub>6</sub> & 7  
 Buchanan P<sub>6</sub>  
 Campbell av J<sub>8</sub> & 9  
 Cameron O<sub>5</sub>  
 Carlton Q to S<sub>6</sub>  
 Cecil O<sub>6</sub>  
 Centre av P<sub>5</sub> & 6  
 Chicora av O & P<sub>8</sub>  
 Charles Q<sub>7</sub>  
 Cherry av J<sub>6</sub>  
 Cherry R<sub>4</sub>  
 Chestnut P<sub>5</sub> & 6  
 Christie M<sub>8</sub> & 9  
 Church Q<sub>4</sub> to 7  
 Churchill av L<sub>6</sub>  
 Claremont M<sub>5</sub> & 6  
 Clarence O<sub>4</sub>  
 Clark T<sub>5</sub>  
 Clement J<sub>6</sub>  
 Clinton M<sub>6</sub> & 7  
 Close S<sub>6</sub>  
 Close av K<sub>4</sub> & 5  
 Clyde N & O<sub>6</sub>  
 Colborne Q<sub>4</sub>  
 College J to P  
 College av P<sub>5</sub> & 6  
 Columbus J<sub>6</sub>  
 Concord av L<sub>6</sub> & 7  
 Cornwall S<sub>5</sub>  
 Cowan av K<sub>4</sub> & 5  
 Cottingham P<sub>9</sub>  
 Cooper av J<sub>7</sub> & 8  
 Crawford M<sub>4</sub> to 7  
 Cumberland av P<sub>7</sub>  
 Cummings T<sub>5</sub>  
 Cypress S<sub>4</sub>  
 Cypress av T<sub>6</sub>

Czar P<sub>7</sub>  
 Dale av  
 Danforth  
 D'Arcy  
 Davenport  
 Defoe M  
 Degraasi  
 Delaware  
 Dewson  
 Denison a  
 Dovercou  
 Douro N  
 Dowling  
 Duchess  
 Dufferin  
 Duncan  
 Duncan a  
 Dundas  
 Dunlop  
 Dunn av  
 Durham  
 Dupont  
 Earl Q  
 East Ma  
 Eastern  
 Edward  
 Edwin av  
 Elgin av  
 Elizabeth  
 Elliott  
 Elm av  
 Elm P<sub>6</sub>  
 Emerson  
 Erin R  
 Ernest a  
 Esplanad  
 Esplanad  
 Essex  
 Esther  
 Euclid a  
 Exhibiti  
 Farley a  
 Fenning  
 Ferman  
 First av  
 Ft. Ro  
 Florenc  
 Folles a  
 Foxley  
 Frankli  
 Frankis  
 Front e  
 Frederi  
 Front v

AP.

Czar P7  
 Dale av R7  
 Danforth av S to V7  
 D'Arcy O6  
 Davenport rd O & P8  
 Defoe M & N4  
 Degrassi T5 & 6  
 Delaware av L6 to 8  
 Dewson L7  
 Denison av L5  
 Dovercourt rd L5 to 9  
 Douro N4  
 Dowling av J4 & 5  
 Duchess Q to R5  
 Dufferin K3 to 9  
 Duncan O4 & 5  
 Duncan av J & I6  
 Dundas J to M5 to 8  
 Dunlop M8  
 Dunn av K3 to 5  
 Durham L8  
 Dupont M to O8  
 Earl Q7  
 East Market sq Q4  
 Eastern av R to W4  
 Edward P6  
 Edwin av J8 & 9  
 Elgin av P8  
 Elizabeth P5 & 6  
 Elliott S & T5  
 Elm av Q & R8  
 Elm P6  
 Emerson av K8  
 Erin R4  
 Ernest av J7  
 Esplanade e Q to R  
 Esplanade w O & P4  
 Essex M8  
 Esther N5  
 Euclid av N5 to 7  
 Exhibition av M4  
 Farley av M to O5  
 Fenning L5  
 Fermanagh av J6  
 First av T6  
 Ft. Rouille K3  
 Florence K5  
 Folles av N8  
 Foxley L5  
 Franklin av J8 & 9  
 Frankish av K6  
 Front e Q to S4  
 Frederick J5  
 Front w N to P4

Fuller J5  
 Galley av J8 & 9  
 Garden av J & K5 & 6  
 Garnet av M8  
 George Q4 to 6  
 Geoffrey I & J6  
 Gerrard e Q to V6  
 Gerrard w P6  
 Givens M5 to 7  
 Gladstone av L5 to 7  
 Glen rd R8  
 Glendale av I6  
 Gloucester Q7  
 Gordon av K5  
 Grace M5 & 6  
 Grant T5  
 Golden av J7  
 Gore Vale av M5 to 7  
 Grove av L5  
 Grenville P6  
 Gordon av R7 & 8  
 Grosvenor P6  
 Gwynne av K4 & 5  
 Hackney N5  
 Hamburg av L7 to 9  
 Hamilton S5 & 6  
 Harold av M8  
 Harbord M to O7  
 Harrison av L & M6  
 Harvard av J5  
 Havelock L6 & 7  
 Hawthorne av R7  
 Hayden Q7  
 Hayter P6  
 Hazelton av P8  
 Hepbourne L7  
 Herrick M & N7  
 Hewitt av I & J7  
 Hickson K6  
 High Park av I & J7  
 Howard Q to R7  
 Howard av I & J7  
 Howie av T5  
 Howland av N7 & 8  
 Hundo av J9  
 Huron O7 & 8  
 Huxley K4  
 Humbert L5  
 Indian rd I5 to 7  
 Ingham av T7  
 Iroquois K3  
 Irwin P7  
 Isabella Q7  
 Jameson av K3 to 5

Jarvis Q<sub>4</sub> to 7  
 Jemima T<sub>5</sub>  
 John O<sub>4</sub> & 5  
 Kendall av O<sub>8</sub>  
 Kensington av O<sub>5</sub> & 6  
 Kensington cres Q<sub>8</sub>  
 King Q to S<sub>4</sub> & 5  
 King w J to P<sub>4</sub>  
 Kintyre S & T<sub>5</sub>  
 Lawlor av L<sub>7</sub>  
 Lake Shore rd H & I<sub>5</sub>  
 Langley av T<sub>6</sub>  
 Lansdowne av K<sub>5</sub> & 6  
 Lappin av K<sub>8</sub>  
 Lennox av M & N<sub>7</sub>  
 Leopold J & K<sub>4</sub>  
 Lewis T<sub>4</sub> & 5  
 Lindsey av L<sub>6</sub>  
 Linden Q<sub>7</sub>  
 Lippincott N<sub>6</sub> to 8  
 Lisgar L<sub>5</sub> & 6  
 Logan av T<sub>4</sub> to 7  
 Lombard Q<sub>5</sub>  
 London N<sub>7</sub>  
 Lorne P<sub>4</sub>  
 Lorne av K<sub>4</sub>  
 Lotus L<sub>6</sub>  
 Louisa P<sub>5</sub>  
 Lowther av N & P<sub>8</sub>  
 McCaul O<sub>5</sub> & 6  
 McGee T<sub>4</sub> & 5  
 McKenzie av K<sub>8</sub> to 9  
 McGill Q<sub>6</sub>  
 McMaster av P<sub>9</sub>  
 McMurrich P<sub>8</sub>  
 McKenzie cres L<sub>5</sub> & 6  
 McKenzie av R<sub>7</sub>  
 Macdonell av K<sub>5</sub> & 6  
 Macpherson av e Q<sub>9</sub>  
 Macpherson av w O & P  
 Maitland Q<sub>7</sub>  
 Madison av O<sub>7</sub> & 8  
 Marshall K<sub>6</sub>  
 Major N<sub>6</sub> & 7  
 Manning av M<sub>5</sub> to 8  
 Mansfield av M<sub>6</sub>  
 Maple av R<sub>7</sub> & 8  
 Maple K<sub>5</sub>  
 Margueretta K<sub>6</sub> & 7  
 Marmaduke av I to J<sub>6</sub>  
 Mark S<sub>5</sub>  
 Markham N<sub>5</sub> to 8  
 Matilda S<sub>5</sub>  
 Maude K<sub>5</sub>  
 Melbourne av K<sub>5</sub>  
 Melville av M<sub>8</sub>  
 Melinda P<sub>4</sub>  
 Mercer O<sub>4</sub>  
 Metcalfe R  
 Middleton K<sub>5</sub>  
 Mill R & S<sub>4</sub>  
 Millicent K<sub>8</sub>  
 Mitchell av M & N<sub>5</sub>  
 Morrow J<sub>7</sub>  
 Mowat av L<sub>4</sub>  
 Munro S<sub>5</sub> & 6  
 Muter N<sub>5</sub> & 6  
 Mutual Q<sub>5</sub> & 6  
 Nassau N & O<sub>6</sub>  
 New P<sub>8</sub>  
 Niagara M & N<sub>4</sub> & 5  
 Noble K<sub>5</sub>  
 North Drive Q<sub>8</sub>  
 North T<sub>7</sub>  
 Northcote av L<sub>5</sub>  
 Northumberland av L<sub>7</sub>  
 Notre Dame J<sub>6</sub>  
 O'Hara av K<sub>5</sub> & 6  
 Oak R & S<sub>6</sub>  
 Olive S<sub>4</sub>  
 Olive av N<sub>8</sub>  
 Ontario R<sub>4</sub> to 7  
 Ossington av M<sub>6</sub> to 9  
 Palmerston av N<sub>6</sub> to 8  
 Park rd Q<sub>8</sub>  
 Parliament R<sub>4</sub> to 7  
 Patton rd J & K<sub>8</sub>  
 Pearl P<sub>4</sub>  
 Pearson av J & K<sub>5</sub>  
 Peel I<sub>5</sub>  
 Pembroke Q<sub>5</sub> & 6  
 Pendrith av M<sub>8</sub>  
 Perth av J<sub>7</sub> to 9  
 Portland N<sub>4</sub> & 5  
 Power R<sub>4</sub> & 5  
 Prince Arthur av O & P  
 Prospect av K<sub>3</sub> & 4  
 Queen e Q to Y<sub>5</sub>  
 Queen w H to P<sub>5</sub>  
 Rachael R<sub>8</sub>  
 Radenhurst S<sub>5</sub>  
 Rathnally av O<sub>9</sub>  
 Rathnally cres P<sub>9</sub>  
 Renfrew pl O<sub>5</sub>  
 Richmond e Q<sub>5</sub>  
 Richmond w O & P<sub>5</sub>  
 River S<sub>5</sub> & 6  
 Robert O<sub>5</sub> & 7

Robins  
 Ronces  
 Rolyat  
 Rose av  
 Roseda  
 Roxbor  
 Roxbor  
 Royce  
 Rushol  
 Russell  
 St Ann  
 Sackvil  
 St Albr  
 St Clar  
 St Dav  
 St Geo  
 St Hel  
 St Jam  
 St Jose  
 St Lav  
 St Ma  
 St Pat  
 St Vin  
 Salem  
 Salisbr  
 Saulte  
 Saurin  
 Scolla  
 Scott  
 Seator  
 Selby  
 Severi  
 Shafte  
 Shanr  
 Shaw  
 Shepp  
 Sherb  
 Sheric  
 Shute  
 Simco  
 Simp  
 Smith  
 Soho  
 Sorau  
 Soutl  
 Spad  
 Spad  
 Sparl  
 Spen  
 Sprir  
 Spru  
 Staff  
 Strar  
 Stew

Robinson N5	Strachan av M4 & 5
Roncesvalles av J5 to 7	Sumach S4 to 6
Rolyat L5	Summerhill av Q9
Rose av R6 & 7	Sunnyside av I5 & 6
Rosedale rd Q8	Sussex av N & O7
Roxborough av e Q8	Sydenham R5
Roxborough av w P8	Sylvan av L7
Royce av J & K9	Tate S4
Rusholme rd L6 & 7	Tecumseth N4 & 5
Russell O6	Temperance P5
St Ann's rd L6	Teraulay P5 & 6
Sackville R4 to 7	Thompson S5
St Albans P7	Toronto Q4
St Clarens av K6 & 7	Tranby av P8
St David's R5	Triller av J5
St George O6 to 8	Trinity R4
St Helen av K7 & 8	Trinity sq P5
St James av R7	Tyndall av K4
St Joseph P7	Ulster N7
St Lawrence S4 & 5	Union L9
St Mary P7	Vanauley N5
St Patrick N to P5	Vermont av N8
St Vincent P7	Victor av T6
Salem av L7 & 8	Victoria Q4 to 6
Salisbury av R6	Victoria cres J & K4
Saulter T4 & 5	Vine S4
Saurin L5	Walker av P9
Scollard P8	Wallace av J & K8
Scott Q4	Walmer rd* O7 & 8
Seaton R5 & 6	Walton P6
Selby Q7	Wardell T5
Severn Q8	Wellesley Q & R7
Shaftesbury av Q9	Wellesley av R7
Shannon L6	Wellington e Q4
Shaw M5 to 8	Wellington w O & P4
Sheppard P4 & 5	Wellington pl N & O4
Sherbourne Q4 to 8	Wellington av M4
Sheridan av K5 & 6	Wells N8
Shuter Q5	West Lodge av K5
Simcoe P5	Westmoreland av L7 & 8
Simpson av T6	Wickson av P9
Smith T & U6	Wilcox O7
Soho O5	William P5
Sorauren av J5 & 6	Wilson av J4 & 5
South Drive Q8	Wilton av Q to S5
Spadina av O4 to 7	Winchester R & S6
Spadina rd O7 & 8	Wood Q6
Sparkhall T7	Woodlawn av P9
Spencer av K4	Woodfrey T7
Springhurst av K4	Yarmouth rd M8
Spruce R & S6	Yonge P4 to 9
Stafford M4	York P4 & 5
Strange T4 & 5	Yorkville av P8
Stewart N4	

[illegible]



Application for Membership in Y.M.C.A of University College.

TO THE GENERAL SECRETARY :

I desire to be admitted into your Association as an .....  
(active or associate)

member, and hereby make application for membership.

Name .....

Class .....

City Address .....

Hand this, filled out, to the General Secretary.

Join the Association because it is:

1. A student organization standing for

(a) Aggressive Christian work by students for students.

(b) Clean, strong Christian manhood.

(c) Honest scholarship.

(d) Symmetrical development of body, mind and spirit.

2. An organization heartily supported by the faculty.

3. The most important factor in the religious life of students coming to the city.

4. The largest student organization in existence.

5. The occupant of a strategic point in the world's conquest.



# UNIVERSITY COLLEGE

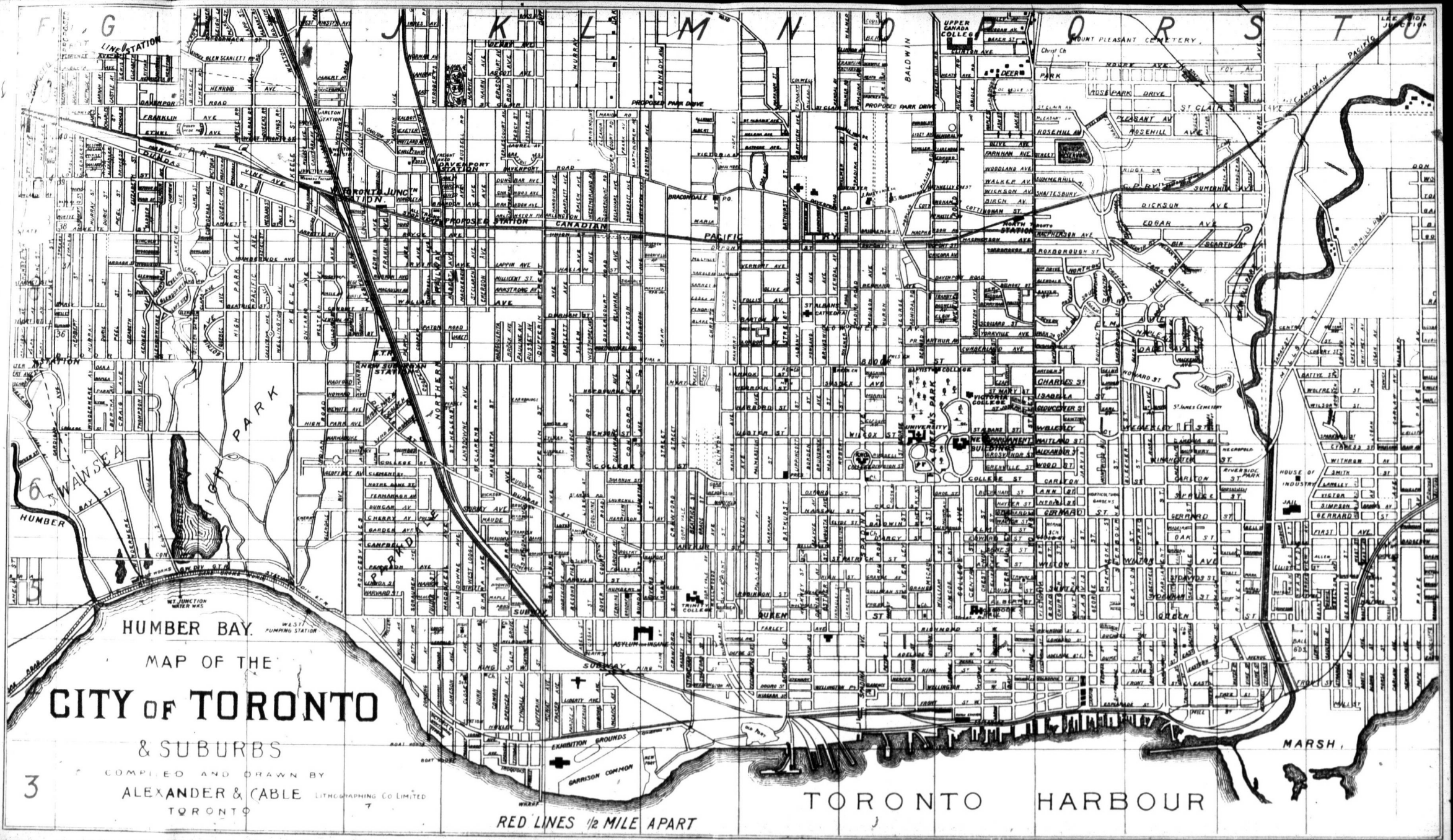
## ... DINING HALL ...

Board by week or day to University Students at Lowest Possible Rates.  
Occasional meals also served.

For information apply to the Secretary,

Conversation and Reading Rooms  
in the Dean's House.

DEAN'S HOUSE,  
University of Toronto



MAP OF THE  
**CITY OF TORONTO**

& SUBURBS

COMPILED AND DRAWN BY  
**ALEXANDER & CABLE** LITHOGRAPHING CO LIMITED  
TORONTO

3

RED LINES 1/2 MILE APART

TORONTO HARBOUR