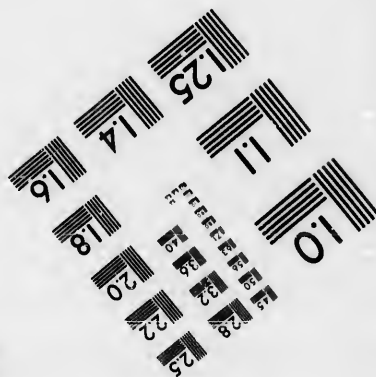
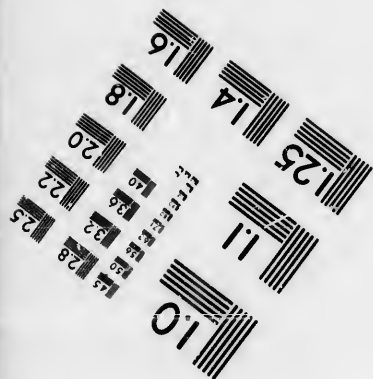
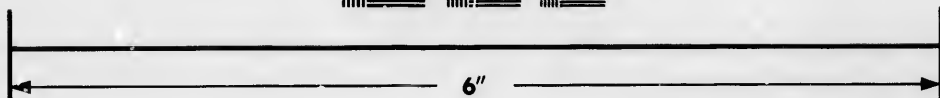
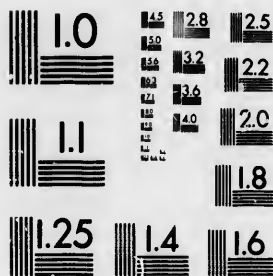


**IMAGE EVALUATION  
TEST TARGET (MT-3)**



**Photographic  
Sciences  
Corporation**

23 WEST MAIN STREET  
WEBSTER, N.Y. 14580  
(716) 872-4503

1.5 1.8 2.0 2.2 2.5  
2.8 3.2 3.6 4.0

**CIHM/ICMH  
Microfiche  
Series.**

**CIHM/ICMH  
Collection de  
microfiches.**



**Canadian Institute for Historical Microreproductions / Institut canadien de microreproductions historiques**

10  
50  
50

**© 1986**

Technical and Bibliographic Notes/Notes techniques et bibliographiques

The Institute has attempted to obtain the best original copy available for filming. Features of this copy which may be bibliographically unique, which may alter any of the images in the reproduction, or which may significantly change the usual method of filming, are checked below.

L'Institut a microfilmé le meilleur exemplaire qu'il lui a été possible de se procurer. Les détails de cet exemplaire qui sont peut-être uniques du point de vue bibliographique, qui peuvent modifier une image reproduite, ou qui peuvent exiger une modification dans la méthode normale de filmage sont indiqués ci-dessous.

- |  |  |
|--|--|
| <input type="checkbox"/> Coloured covers/<br>Couverture de couleur   | <input type="checkbox"/> Coloured pages/<br>Pages de couleur   |
| <input type="checkbox"/> Covers damaged/<br>Couverture endommagée  | <input type="checkbox"/> Pages damaged/<br>Pages endommagées   |
| <input type="checkbox"/> Covers restored and/or laminated/<br>Couverture restaurée et/ou pelliculée  | <input type="checkbox"/> Pages restored and/or laminated/<br>Pages restaurées et/ou pelliculées  |
| <input type="checkbox"/> Cover title missing/<br>Le titre de couverture manque   | <input checked="" type="checkbox"/> Pages discoloured, stained or foxed/<br>Pages décolorées, tachetées ou piquées   |
| <input type="checkbox"/> Coloured maps/<br>Cartes géographiques en couleur   | <input type="checkbox"/> Pages detached/<br>Pages détachées  |
| <input type="checkbox"/> Coloured ink (i.e. other than blue or black)/<br>Encre de couleur (i.e. autre que bleue ou noire)   | <input checked="" type="checkbox"/> Showthrough/<br>Transparence   |
| <input type="checkbox"/> Coloured plates and/or illustrations/<br>Planches et/ou illustrations en couleur  | <input type="checkbox"/> Quality of print varies/<br>Qualité inégale de l'impression   |
| <input type="checkbox"/> Bound with other material/<br>Relié avec d'autres documents   | <input type="checkbox"/> Includes supplementary material/<br>Comprend du matériel supplémentaire   |
| <input type="checkbox"/> Tight binding may cause shadows or distortion<br>along interior margin/<br>La reliure serrée peut causer de l'ombre ou de la<br>distorsion le long de la marge intérieure   | <input type="checkbox"/> Only edition available/<br>Seule édition disponible   |
| <input type="checkbox"/> Blank leaves added during restoration may<br>appear within the text. Whenever possible, these<br>have been omitted from filming/<br>Il se peut que certaines pages blanches ajoutées<br>lors d'une restauration apparaissent dans le texte,<br>mais, lorsque cela était possible, ces pages n'ont<br>pas été filmées. | <input type="checkbox"/> Pages wholly or partially obscured by errata<br>slips, tissues, etc., have been refilmed to<br>ensure the best possible image/<br>Les pages totalement ou partiellement<br>obscurcies par un feuillet d'errata, une pelure,<br>etc., ont été filmées à nouveau de façon à<br>obtenir la meilleure image possible. |
| <input checked="" type="checkbox"/> Additional comments: / [Printed ephemera] [4] p.<br>Commentaires supplémentaires:  |  |

This item is filmed at the reduction ratio checked below/  
Ce document est filmé au taux de réduction indiqué ci-dessous.

10X	12X	14X	16X	18X	20X	22X	24X	26X	28X	30X	32X
								/			

The copy filmed here has been reproduced thanks to the generosity of:

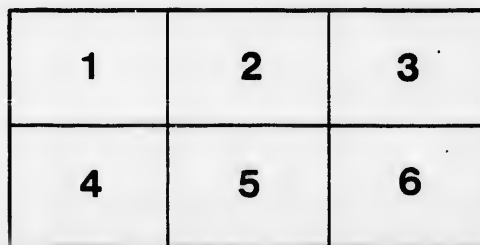
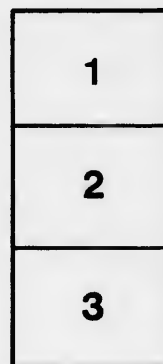
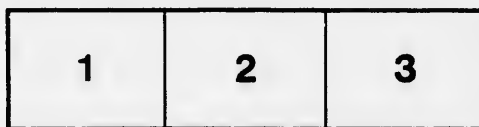
D. B. Weldon Library  
University of Western Ontario  
(Regional History Room)

The images appearing here are the best quality possible considering the condition and legibility of the original copy and in keeping with the filming contract specifications.

Original copies in printed paper covers are filmed beginning with the front cover and ending on the last page with a printed or illustrated impression, or the back cover when appropriate. All other original copies are filmed beginning on the first page with a printed or illustrated impression, and ending on the last page with a printed or illustrated impression.

The last recorded frame on each microfiche shall contain the symbol  $\rightarrow$  (meaning "CONTINUED"), or the symbol  $\nabla$  (meaning "END"), whichever applies.

Maps, plates, charts, etc., may be filmed at different reduction ratios. Those too large to be entirely included in one exposure are filmed beginning in the upper left hand corner, left to right and top to bottom, as many frames as required. The following diagrams illustrate the method:



L'exemplaire filmé fut reproduit grâce à la générosité de:

D. B. Weldon Library  
University of Western Ontario  
(Regional History Room)

Les images suivantes ont été reproduites avec le plus grand soin, compte tenu de la condition et de la netteté de l'exemplaire filmé, et en conformité avec les conditions du contrat de filmage.

Les exemplaires originaux dont la couverture en papier est imprimée sont filmés en commençant par le premier plat et en terminant soit par la dernière page qui comporte une empreinte d'impression ou d'illustration, soit par le second plat, selon le cas. Tous les autres exemplaires originaux sont filmés en commençant par la première page qui comporte une empreinte d'impression ou d'illustration et en terminant par la dernière page qui comporte une telle empreinte.

Un des symboles suivants apparaîtra sur la dernière image de chaque microfiche, selon le cas: le symbole  $\rightarrow$  signifie "A SUIVRE", le symbole  $\nabla$  signifie "FIN".

Les cartes, planches, tableaux, etc., peuvent être filmés à des taux de réduction différents. Lorsque le document est trop grand pour être reproduit en un seul cliché, il est filmé à partir de l'angle supérieur gauche, de gauche à droite, et de haut en bas, en prenant le nombre d'images nécessaire. Les diagrammes suivants illustrent la méthode.

# GRAND OPERA HOUSE

C. J. WHITNEY  
LESSEE

A. E. ROOTE  
MANAGER

## PROGRAMME

LONDON  
ONT.



THAT  
FALL  
SUIT

Let us make it for you this season.  
We have received an entire new stock  
of the latest fabrics to select from.  
No old goods.

DEEKS & CO.

393 RICHMOND STREET  
NEAR CITY HALL LONDON, ONT.

### OFFICE RESTAURANT

D. SARE, Proprietor

Best Wines, Liquors and Cigars

always on hand. Full course Dinner from 12 to 2

HOT MEALS per order, at all hours.

OYSTERS, in any style,  
every day of the year.

We appreciate your patronage, and always  
do what's right.

### BREAD

IS THE STAFF  
OF LIFE

Too much care cannot be given to the  
selection of PURE, WHOLESOME and CLEANLY  
MADE BREAD.

"EUREKA" Bread needs only a  
trial to convince you. Manufactured by

PARNELL-DEAN  
STEAM BAKING CO.  
LIMITED

Telephone 929. 75 BRUCE ST.

BETWEEN THE ACTS

CALL  
AT THE RICHMOND HOTEL

N. E. Cor. Richmond and King Sts.

FRESH LAGER, WINES, LIQUORS and CIGARS

H. L. PEINE, New Proprietor

SEASON 1898-9



THURSDAY, SEPT. 29th



MR. HERBERT KELCEY — MISS EFFIE SHANNON

— THE —

KELCEY-SHANNON CO.

Under the Management of  
SAMUEL F. KINGSTON, in

The Moth  
and The Flame

An Original Play in Three Acts,

By CLYDE FITCH.

### MASON & RISCH

### PIANOS

The Instruments . . .  
. . . of the Cultured

WE ARE OFFERING SPECIAL BARGAINS AT  
PRESENT, AND SOLICIT A CALL  
AT OUR

WAREROOMS  
213 DUNDAS STREET

C. H. TESKEY  
MANAGER  
LONDON BRANCH

### SMITH BROS.

STEAM, GAS and  
HOT WATER  
FITTERS

### PLUMBERS

265 Dundas Street  
Telephone 538

LONDON

THIS  
PROGRAMME

IS FROM THE PRESS OF

Heal & Fleming

172 KING STREET

WE SOLICIT YOUR  
PATRONAGE



TELEPHONE  
874

# THE LONDON FLORAL CO'Y

DEALERS IN....

All Kinds of

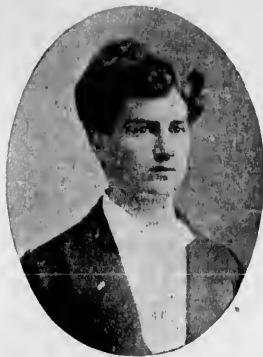
## “ CUT ” FLOWERS

And Decorative Plants.

Theatre Parties  
a Specialty. 249 Dundas Street.

PHONE 493.

SMOKE THE ONLY  
VIRGINIA HONEST  
5c CIGAR SOLD  
H. McKENNA, 225 DUNDAS STREET.



You  
Contemplate  
Wedding



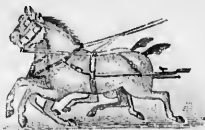
WHY not have the latest ideas? In catering we can save you trouble and expense. Are you giving a Bicycle Party, an At Home or Social? We offer inducements that are irresistible. Our Soda Water and Jersey Ice Cream has no equal. Our candies and Confectionery made fresh daily. If you wish dressed fowl or meats of any variety, leave your order with us, we can supply you on shortest notice. Oysters served in every style. Lunch rooms open till 12 p.m.

SPECIALTIES: Salads and Puddings, Hot and Cold Lunches.  
SENT TO ANY PART OF THE CITY.

SHORT BROS.  
'Phone 491 220 Dundas Street

## Stroyan's Mammoth Livery

BOARDING AND SALE STABLES



'Phone  
No.  
503

Open  
Day and  
Night

HACKS, COUPES AND LIGHT LIVERY  
A. G. STROYAN, Proprietor

CALL THE USHER WHEN IN WANT OF CAB OR COUPE

Full Line of... LONDON VIEWS

## ...SOUVENIRS...

Useful Wedding and Birthday Presents

## Yeo's China Hall

177 DUNDAS STREET

China and Glass Goods for all household purposes.

You are invited to call and inspect our new fall stock of Fancy China.



## CAST OF CHARACTERS.

Edward Fletcher	Mr. Herbert Keacey
Mr. Dawson	Mr. Jos. E. Whiting
Mr. Wolton	Mr. Charles Stedman
Douglas Rhodes	Mr. Bruce McRae
Johnstone	Mr. Edward See
Fanshaw	Mr. David Torrence
Trimmins	Mr. C. Sumner Robinson
Clergyman	Mr. Arthur Haven
Howes	Mr. Edwin James
Marion Wollon	Miss Effie Shannon
Mrs. Lorimer	Miss Marlon Abbott
Mrs. Wolton	Mrs. Isabel Waldron
Jeannette Gross	Miss. Grace Reals
Ethel	Miss Lella Hills
Kitty	Miss Winona Shannon
Gertrude	Miss Ethel Kingson
Blanche	Miss Mary Hanson
Bessy	Miss Mamie Dunn
Mrs. Fletcher Sr.	Mrs. Frances Ferrer
Maid	Miss Emma Janvier

(Guests, bridesmaids, Etc.)

Produced under the stage directions of the Author.



## Rimless Glasses

ROCK CRYSTALIZED LENSES

DOCTORS

## Duckett, Bell & Melrose

THE ONLY EXCLUSIVE EYE SPECIALISTS

220 DUNDAS STREET, - LONDON

## HA! HA! HA!



Like the funny man in the show, we laugh at all competition in our line of trade. Laugh one, laugh all! then leave your order for something choice in.....

Meats, Poultry, Game, &c.

## BREEN'S

'Phone 944

735 Richmond Street

DELIVERED FREE TO ALL PARTS OF CITY

## Cannot Be Done

AT HOME FOR THE MONEY

Table Covers, Napkins, Sheets  
Pillow Slips, Towels, Rollers

50 OF THE ABOVE PIECES  
LAUNDERED FOR 50 CENTS

Work called for and delivered to any part of the city free.

'PHONE 559

Parisian Steam Laundry Co.

LIMITED

## FAIRBAIRN

Opposite City Hall  
UP-STAIRS

The Tailor

If you have your own cloth, bring it to me and I will make it up in the best possible style at a reasonable cost.

## Fall Suits and Overcoats

Prices sure to suit you as well as fit.  
A CALL SOLICITED.

FAIRBAIRN, The Tailor

Opposite City Hall, Richmond Street.

"'Tis almost second nature for an actor to relate stories, even of a funeral nature, in as entertaining a manner as possible.

Mr. Goodwin is accredited with talking about it the other day.

"For instance," said he, "what's the use of going into all the harrowing details. Leave something to the imagination. Now, take for example, suppose you read something like this in the paper:

"'In Boston the other day, a man thought he could cross the track in advance of a locomotive. The services at the grave were very impressive.' Or

"'A man in Maryland ate fifty raw oysters on a wager. The silver trimmings on his coffin cost \$12.50.' Or

"'A Chicago man warned his wife not to light the fire with kerosene. She did not heed the warning. Her clothes fit his second wife admirably well.' Or

"'A Londoner got tired of buying his coal hazardous, because it was cheap, and now buys it from Cameron. As a result the doctor never calls, and he and his family are happy all the time.'" 'Tis brief, but really all-sufficient. Office, Hiscox Building; Yard, Burwell Street, at G. T. R.

## NOTICE

The limited space unrented in this Programme may be applied for at the Box Office. You read this, so would your advertisement be read. Keep yourself and business before the public. Theatre patrons are good customers for most business men.

## DAYTON & McCORMICK NEW PALACE ....Dancing Academy

422 RICHMOND STREET  
(Over Canadian Loan and Savings Bank)

Classes for beginners will open as follows: Gentlemen, Monday evening, Oct. 3. Ladies, Tuesday evening, Oct. 4. The recognized leading academy of Western Canada.

ELECTRIC LIGHTS, ELECTRIC FANS  
AND EVERYTHING NEW AND UP-TO-DATE.  
Academy open every evening for application of pupils.  
Call early, as classes will be limited to number.  
**DAYTON & McCORMICK**

## LONDON STEAM LAUNDRY

284 Dundas Street

FIRST-CLASS WORK MODERATE RATES

Family Washing <sup>ROUGH</sup> DRIED 5c per lb.

## Theatrical Troupes

PROMPTLY WAITED UPON

Prompt work. Satisfaction guaranteed.

**TELEPHONE 1266**  
OUR WAGON WILL CALL

**G. M. RYCKMAN, Proprietor**

## F. H. BUTLER Stock Broker

STOCKS, GRAINS AND PROVISIONS bought and sold for cash or on margin. Private wires to New York Stock Exchange and Chicago Board of Trade. Toronto and Montreal Stock Exchange quotations received by wire.

LONG DISTANCE TELEPHONE 1278

15-16 Masonic Temple, London

**GOING ...THE...  
ADVERTISER**  
SIGNS, BANNERS  
and WALL WORK **578**  
RICHMOND ST.

## E. J. PEARCE

Successor to E. J. BURKE

521 RICHMOND STREET

FULL LINE

Amateur  
Supplies

ALWAYS  
IN STOCK



## SYNOPSIS

ACT I—  
*Mr. and Mrs. Lawrence Wolton  
At Home  
Tuesday, Evening January—  
at Ten O'clock.*  
*Children's Costumes —East 6th Street.  
de rigueur*

ACT. II—One year later.  
*Mrs. Lawrence Wolton  
requests the honor of your presence  
at the marriage of her Daughter  
Marion  
to  
Mr. Edward Houghton Fletcher,  
Thursday, February 10th,  
at Five o'clock,  
St. Hubert's Chapel, New York.*

ACT III—The Following Day.

S. Goodf. and . . . . .	} EXECUTIVE STAFF {	Business Manager
C. S. Robinson . . . . .		Stage Director
Edward See . . . . .		Stage Manager
Edwin James . . . . .		Properties
		FOR
		THE COMPANY

**The Famous Bell Orchestral Piano**  
IS USED EXCLUSIVELY IN THIS THEATRE.

## SLATER BROS. TAILORS

399 Richmond St. Telephone 844

FINE IMPORTED WOOLENS  
A SPECIALTY

LARGEST STOCK IN THE CITY ORDERS FINISHED PROMPTLY

## TECUMSEH

IS MY NEW 5c CIGAR

**JOE NOLAN, RICHMOND STREET**  
Round the Corner.

"The Ravishing Bliss of a Lover's First Kiss"  
Is the only adequate illustration of the delicious satisfaction that is afforded the user of

## P. J. WATT'S PURE WINE

There are other wines sold in London, but the old NATIVE PORT, manufactured by P. J. Watt, has the same invigorating effect to the stomach that a shower bath has on a tramp.

1886, 90c; Vintage 1895, \$1.00 per gallon.  
428 RICHMOND STREET, Next News Office

Visitors to this Theatre can, by saving their programs, receive FREE OF CHARGE, a SILVER THIMBLE in return for it at **COLE'S** Cut Rate Store. See advertisement on last page.

**A Man Wants to See You  
BETWEEN ACTS, AT**



**JERRY McDONALD'S**  
131 KING STREET

## THE TECUMSEH

LONDON, ONT.



FIRST-CLASS  
IN ALL  
APPOINTMENTS.

SPECIAL RATES  
FOR COMPANIES

**CHAS. W. DAVIS,**  
Proprietor



# BIGYGLES GIVEN AWAY FREE!



## COLE



## COLE

### THE GREAT BARGAIN MAN

WILL GIVE AWAY GOOD BICYCLES FREE.

WITH every dollar purchase Cole will give you a key, and when a certain number of keys have been given out all of the keys will be called in. The holder of a key that will unlock a bicycle will be presented with a bicycle FREE OF CHARGE. This is a good chance to get a bicycle free. All we ask is the privilege of advertising your name as the winner of the prize.

THESE WHEELS ARE A1, AND ARE SOLD IN EVERY TOWN AND CITY IN CANADA.

WE GIVE THE CHOICE OF A GENTS' OR LADIES' WHEEL

We have just received a big lot of New Goods, consisting of Ladies' and Gents' Underwear, Collars, Hosiery, Gloves, Flannels, Blankets, Ribbons, Hats and Birds, all of which we have marked extra cheap in order to start the Fall Trade with a rush.

WHEN YOU ARE OUT SHOPPING DO NOT FORGET THE SPOT FOR BARGAINS IS

## COLE'S CUT-RATE STORE, 202 DUNDAS ST.

SATURDAY IS ALWAYS OUR SPECIAL SALE DAY.

**SPECIAL NOTICE**—Ladies, do not destroy this Programme. Mr. Cole invites you to bring it to his store and to receive in exchange for it (the programme), free of all charge, a souvenir SILVER TRIMBLE. That's easy, isn't it?

Next Attraction

FRIDAY, SEPT. 30th

Grandest Success  
of a Century

FROM THE  
ACADEMY  
OF MUSIC  
NEW YORK

# HUMANITY

Enormous Stage Pictures  
Crowded with Realism  
A Splendid Company  
25 People

PRICES, 25c, 50c, 75c

SEATS NOW ON SALE.



## COMING!

Monday, October 3rd

The management desires to impress upon your minds  
very strongly the importance and merit  
of this attraction.

SPECIAL GUARANTEE ENGAGEMENT  
OF THE  
EMINENT COMEDIAN

# MR. SOL SMITH RUSSELL

IN HIS LATEST SUCCESS,

## "UNCLE DICK"

BY MARTHA MORTON.



—PRICES—

First two rows Circle, \$1.60; balance Lower  
Floor, \$1.00.  
First two rows Balcony, 75c; balance Balcony,  
50c. Gallery, 25c.

SEATS ON SALE FRIDAY, 9 A.M.

SATURDAY, OCT. 1st

MATINEE AND NIGHT.

RETURN OF THE FAVORITES

The World's Greatest Producers

## THE GORMAN'S

JOHN, JAMES AND GEORGE

In their New  
Musical Comedy

## "Mr. Beane, from Boston"

A CAPABLE COMPANY  
OF COMEDIANS

SINGERS AND

PRETTY GIRLS.

PRICES:

Matinee, - - 15c and 25c  
Night, - - 25c, 50c and 75c

SEATS ON SALE THURSDAY.



