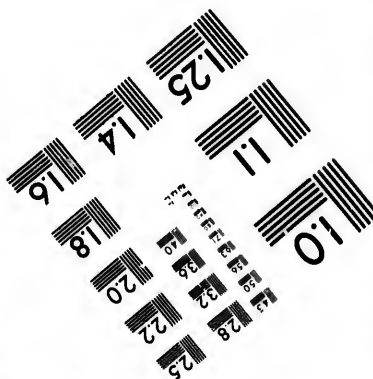
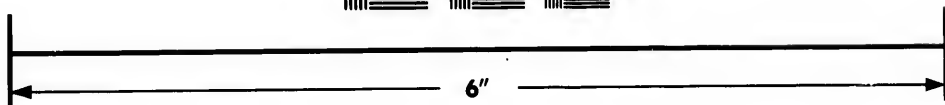
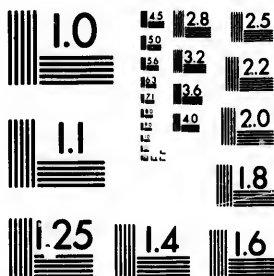


**IMAGE EVALUATION
TEST TARGET (MT-3)**



**Photographic
Sciences
Corporation**

23 WEST MAIN STREET
WEBSTER, N.Y. 14580
(716) 872-4503

12.8
13.2
22
2.0

**CIHM/ICMH
Microfiche
Series.**

**CIHM/ICMH
Collection de
microfiches.**



Canadian Institute for Historical Microreproductions / Institut canadien de microreproductions historiques

10

© 1985

Technical and Bibliographic Notes/Notes techniques et bibliographiques

The Institute has attempted to obtain the best original copy available for filming. Features of this copy which may be bibliographically unique, which may alter any of the images in the reproduction, or which may significantly change the usual method of filming, are checked below.

L'Institut a microfilmé le meilleur exemplaire qu'il lui a été possible de se procurer. Les détails de cet exemplaire qui sont peut-être uniques du point de vue bibliographique, qui peuvent modifier une image reproduite, ou qui peuvent exiger une modification dans la méthode normale de filmage sont indiqués ci-dessous.

- Coloured covers/
Couverture de couleur
- Covers damaged/
Couverture endommagée
- Covers restored and/or laminated/
Couverture restaurée et/ou pelliculée
- Cover title missing/
Le titre de couverture manque
- Coloured maps/
Cartes géographiques en couleur
- Coloured ink (i.e. other than blue or black)/
Encre de couleur (i.e. autre que bleue ou noire)
- Coloured plates and/or illustrations/
Planches et/ou illustrations en couleur
- Bound with other material/
Relié avec d'autres documents
- Tight binding may cause shadows or distortion
along interior margin/
La reliure serrée peut causer de l'ombre ou de la
distortion le long de la marge intérieure
- Blank leaves added during restoration may
appear within the text. Whenever possible, these
have been omitted from filming/
Il se peut que certaines pages blanches ajoutées
lors d'une restauration apparaissent dans le texte,
mais, lorsque cela était possible, ces pages n'ont
pas été filmées.
- Additional comments:/
Commentaires supplémentaires:

- Coloured pages/
Pages de couleur
- Pages damaged/
Pages endommagées
- Pages restored and/or laminated/
Pages restaurées et/ou pelliculées
- Pages discoloured, stained or foxed/
Pages décolorées, tachetées ou piquées
- Pages detached/
Pages détachées
- Showthrough/
Transparence
- Quality of print varies/
Qualité inégale de l'impression
- Includes supplementary material/
Comprend du matériel supplémentaire
- Only edition available/
Seule édition disponible
- Pages wholly or partially obscured by errata
slips, tissues, etc., have been refilmed to
ensure the best possible image/
Les pages totalement ou partiellement
obscurcies par un feuillet d'errata, une pelure,
etc., ont été filmées à nouveau de façon à
obtenir la meilleure image possible.

This item is filmed at the reduction ratio checked below/
Ce document est filmé au taux de réduction indiqué ci-dessous.

10X	14X	18X	22X	26X	30X
<input type="checkbox"/>	<input type="checkbox"/>	<input type="checkbox"/>	<input type="checkbox"/>	<input type="checkbox"/>	<input checked="" type="checkbox"/>
12X	16X	20X	24X	28X	32X

The copy filmed here has been reproduced thanks to the generosity of:

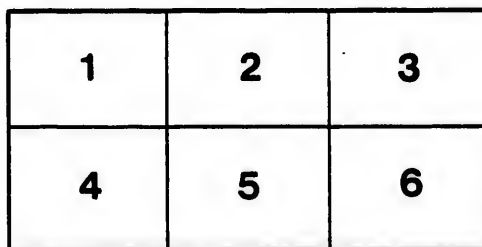
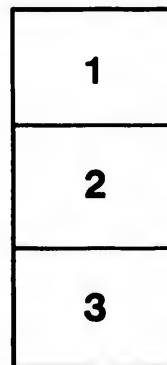
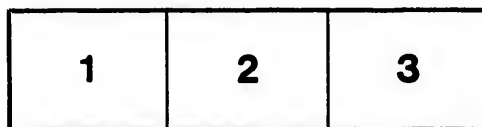
Medical Library
McGill University
Montreal

The images appearing here are the best quality possible considering the condition and legibility of the original copy and in keeping with the filming contract specifications.

Original copies in printed paper covers are filmed beginning with the front cover and ending on the last page with a printed or illustrated impression, or the back cover when appropriate. All other original copies are filmed beginning on the first page with a printed or illustrated impression, and ending on the last page with a printed or illustrated impression.

The last recorded frame on each microfiche shall contain the symbol \rightarrow (meaning "CONTINUED"), or the symbol ∇ (meaning "END"), whichever applies.

Maps, plates, charts, etc., may be filmed at different reduction ratios. Those too large to be entirely included in one exposure are filmed beginning in the upper left hand corner, left to right and top to bottom, as many frames as required. The following diagrams illustrate the method:



L'exemplaire filmé fut reproduit grâce à la générosité de:

Medical Library
McGill University
Montreal

Les images suivantes ont été reproduites avec le plus grand soin, compte tenu de la condition et de la netteté de l'exemplaire filmé, et en conformité avec les conditions du contrat de filmage.

Les exemplaires originaux dont la couverture en papier est imprimée sont filmés en commençant par le premier plat et en terminant soit par la dernière page qui comporte une empreinte d'impression ou d'illustration, soit par le second plat, selon le cas. Tous les autres exemplaires originaux sont filmés en commençant par la première page qui comporte une empreinte d'impression ou d'illustration et en terminant par la dernière page qui comporte une telle empreinte.

Un des symboles suivants apparaîtra sur la dernière image de chaque microfiche, selon le cas: le symbole \rightarrow signifie "A SUIVRE", le symbole ∇ signifie "FIN".

Les cartes, planches, tableaux, etc., peuvent être filmés à des taux de réduction différents. Lorsque le document est trop grand pour être reproduit en un seul cliché, il est filmé à partir de l'angle supérieur gauche, de gauche à droite, et de haut en bas, en prenant le nombre d'images nécessaire. Les diagrammes suivants illustrent la méthode.



McGILL UNIVERSITY

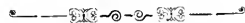
MEDICAL FACULTY

ILLUSTRATED

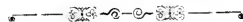


ENTRANCE TO COLLEGE GROUNDS

ILLUSTRATIONS
OF THE
MEDICAL FACULTY,
MCGILL UNIVERSITY,



Published by permission of the Faculty



E. M. RENOUF,
MONTREAL.



WILLIAM PETERSON, M.A., LL.D. - PRINCIPAL.

ALEXANDER JOHNSON, M.A., LL.D., VICE-PRINCIPAL.

ROBERT CRAIK, M.D., LL.D. DEAN.

Introduction.



THE Faculty of Medicine of McGill University is this year (1898) entering on its seventieth academic session as a teaching body. The Faculty is a direct continuation of the Montreal Medical Institution founded in connection with the Montreal General Hospital in 1822.

Twenty-five students attended the first session in 1824. The number in 1844 was fifty. In 1864 it had increased to one hundred and eighty; in 1884 to two hundred and thirty-six, and in 1894 to four hundred three. The total number enregistered for the Session of 1897-98 was four hundred and twenty-five.

Assisted by a staff of nine Lecturers and twenty-five Demonstrators, the following constitute the

Faculty of Medicine for 1898-1899.

	+	+	+
WILLIAM PETERSON, M.A., LL.D., Principal.			JAMES STEWART, M.D., Professor of Medicine and Clinical Medicine
ALEXANDER JOHNSON, M.A., LL.D., Vice Principal.			GEORGE WILKINS, M.D., Professor of Medical Jurisprudence, and Lecturer on Histology.
ROBERT CRAIK, M.D., LL.D., Dean.		+	D. P. PENHALLOW, B.Sc., M.A.Sc., Professor of Botany.
R. F. RUTTAN, B.A., M.D., Registrar.			WESLEY MILLS, M.A., M.D., Professor of Physiology.
J. G. ADAMI, M.A., M.D., Director of the Museum.			JAMES CHALMERS CAMERON, M.D., Professor of Midwifery and Diseases of Infancy.
F. G. FISLEY, M.B. (Lond.), M.D. (McGill), Librarian		+	ALEX. D. BLACKADER, B.A., M.D., Professor of Pharmacology and Therapeutics, and Lecturer on Diseases of Children.
EMERITUS PROFESSORS.			R. F. RUTTAN, B.A., M.D., Professor of Practical Chemistry.
WILLIAM WRIGHT, M.D., Materia Medica.		+	JAMES BELL, M.D., Professor of Clinical Surgery.
DUNCAN C. MACCALLUM, M.D., Midwifery.			J. G. ADAMI, M.A., M.D. (Cantab.), Professor of Pathology.
SIR WILLIAM DAWSON, C.M.G., LL.D., F.R.S., Natural History.			F. G. FISLEY, M.B. (Lond.), M.D. (McGill), Assistant Professor of Medicine, and Associate Professor of Clinical Medicine.
PROFESSORS.			HENRY A. LAFLEUR, B.A., M.D., Assistant Professor of Medicine and Associate Professor of Clinical Medicine.
ROBERT CRAIK, M.D., LL.D., Professor of Public Health, and Preventive Medicine.		+	GEORGE E. ARMSTRONG, M.D., Associate Professor of Clinical Surgery.
G. P. GIRDWOOD, M.D., Professor of Chemistry.			H. S. BIRKETT, M.D., Professor of Laryngology.
THOMAS G. RODDICK, M.D., Professor of Surgery.		+	WYATT JOHNSTON, M.D., Assistant Professor of Public Health and Lecturer on Medico-Legal Pathology.
WILLIAM GARDNER, M.D., Professor of Gynaecology.			
FRANCIS J. SHEPHERD, M.D., Professor of Anatomy.			
FRANK BULLER, M.D., Professor of Ophthalmology and Otolary.		+	



J.H.R. MOLSON, ESQ.



THE RT. HON. LORD STRATHCONA & MOUNT ROYAL
G.C.M.G., LL.D.,
PRESIDENT AND CHANCELLOR.

THE home of the Faculty of Medicine is an irregular collection of buildings situated in the north-east portion of the University grounds. These buildings may be reached either from the main drive which leads up to the Arts Building from Sherbrooke street, or by entering the grounds from University street, by the University street gates.

On the west side they face Carlton Road and the City Reservoir. This road connects the University grounds with Pine Avenue, on which is situated the Royal Victoria Hospital.

The medical buildings have grown up in response to the needs of the school. The front building, of plain stone, is the oldest, and was presented to the Faculty of Medicine, in 1872, by the Governors of the University. In direct connection with this are two additional buildings, the intermediate structure, chiefly of brick, was erected in 1872 by the Faculty, and the larger new stone building behind this was erected in 1894 by the late John H. R. Molson to meet the increasing demand for laboratory space.

DIRECTLY attached to this building, on the north, is the wing for pathology. This was a stone dwelling house which was completely altered to meet the requirements of a modern pathological laboratory.

The total length of the main corridor of the Medical Building is two hundred and seventy-eight feet, and the ground area covered is over twenty-two thousand five hundred square feet. The total available floor area of the Faculty buildings is about fifty-five thousand square feet.

The first building reached from the College grounds has two entrances, the main entrance with its limestone portico leads to the main floor of the buildings. The second, on the east side, is the students' entrance and leads to cloak rooms, lavatories, locker rooms, etc., and is connected with the janitor's apartments. The ground floor is laid in asphalt throughout, and the walls are panelled in ash. The lavatories have both walls and floors tiled.



GENERAL VIEW FROM CARLTON ROAD.



MCGILL MEDICAL BUILDINGS.

THE Library is reached by the first door to the left of the main entrance. The first room on entering is the general reading room for the use of students and strangers. This formed the Professors Library and Faculty Room of the original building erected by the Governors. In 1895 it was converted into the Reading Room for the use of the Students, who have free access to all books in the Library—a privilege highly appreciated and never abused.

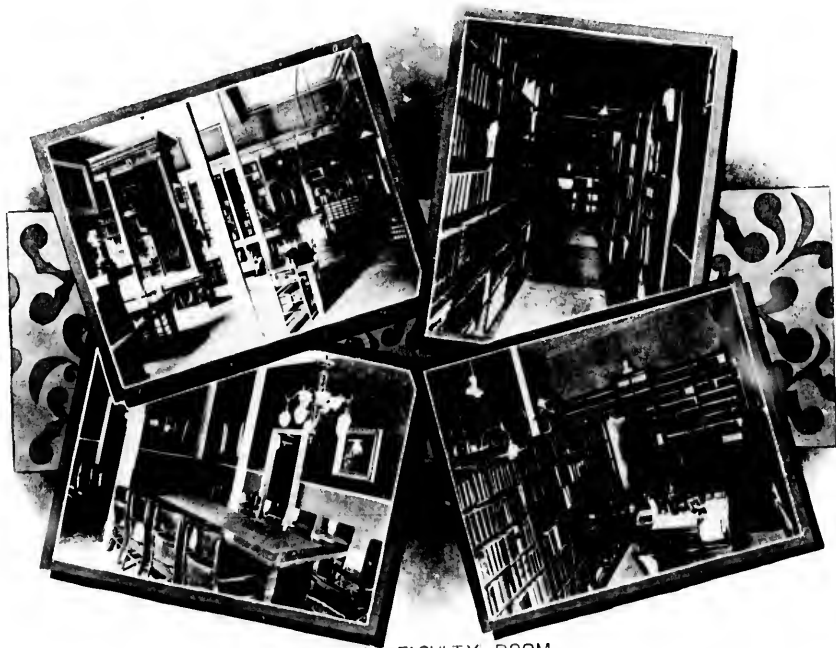
This room connects with the stack room, behind which is the Faculty room, and Professors' reading room. The library, which is entirely medical, contains about fifteen thousand volumes, among which are complete sets of most of the standard periodicals in English and German, and also many rare volumes of interest to the antiquary. The library has between five and six thousand readers per annum.

ON the opposite side of the hall from the library is the pathological museum, consisting of two rooms, each with a gallery. The first of these is reserved for calculi and bone specimens, the second contains only moist preparations and models. This has been newly renovated, and presents not a few features which may appeal to those interested in museums.

The moist preparations are arranged in open shelves and grouped for teaching purposes. Water color drawings made from fresh specimens are mounted on swinging frames and form a frieze at the ceiling. These serve to recall the fugitive colors of these preparations which become more or less altered on keeping. The rooms are finished in white, a deep olive green serving as a back ground for the specimens on the shelves.

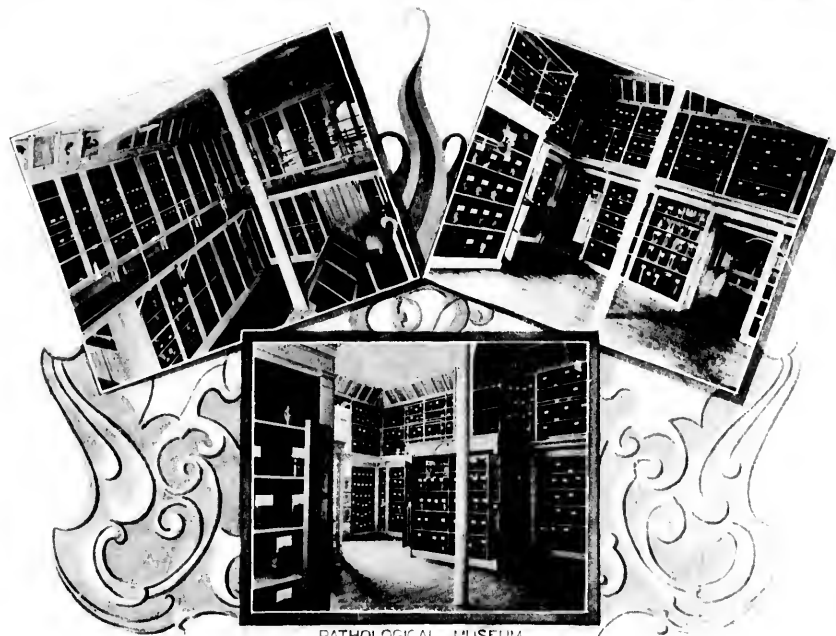


LIBRARY



LIBRARY - FACULTY ROOM.





PATHOLOGICAL MUSEUM

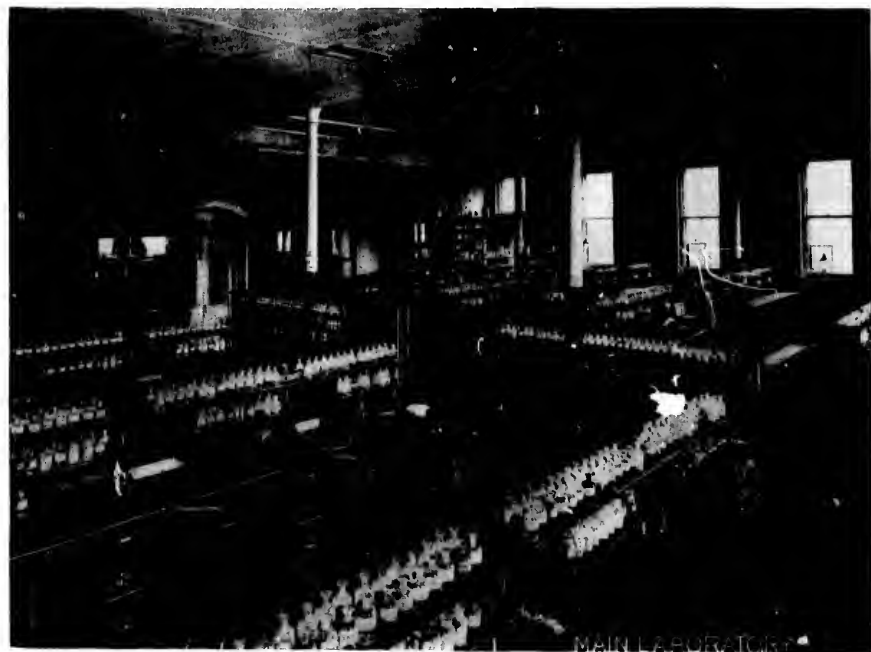
ADJOINING the museum is the office of the Registrar and Bursar of the Faculty; a rise of three steps marks the beginning of the second building, the main floor of which is occupied on the right by the chemical laboratories. The chemical laboratories in this building are for the practical courses. The preparation laboratories for the lecture courses are in the new building adjoining Lecture Room No. III.

The Students' laboratory is a room 60 by 45 feet, with separate work tables arranged for 124 students. It is lighted on three sides, and has adjoining it a large private laboratory for the Professor of Practical Chemistry, and an out-door laboratory which is used in summer months for dangerous or explosive experiments.

Opposite the laboratories is Lecture room No. I, with a seating capacity of 250. Adjoining the lecture room is the professors' cloak and waiting room.



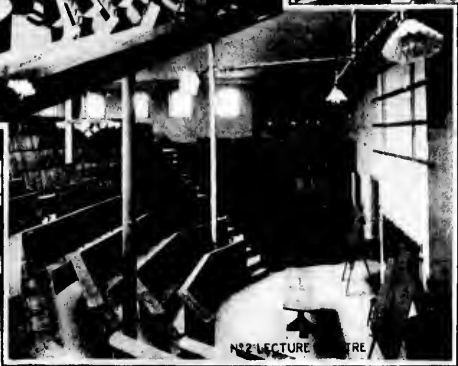
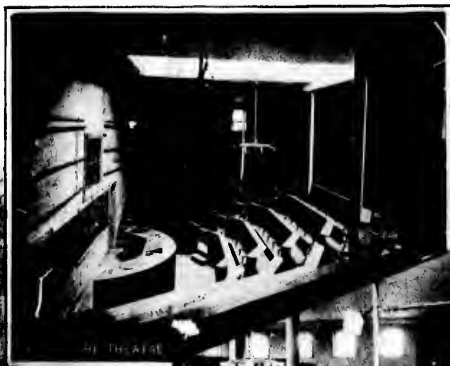
CHEMICAL LABORATORY.



THE new wing is reached by a short flight of steps. Passing the students' reading and waiting room and a small cloak room on the left, the entrance to lecture room No. 3 is reached. This room is rectangular, and has a seating capacity of over four hundred. It is reached by two doors, one above on the next floor for students' use.

Behind this lecture room are two preparation laboratories for the use of the Professor of Chemistry and an ante-room. Below the seats are the store rooms for appliances.

On the opposite side of the hall is the private room of the Professor of Surgery, and the private entrance to the pathological wing. This leads to the small research laboratories, preparation rooms and the private laboratory of the Professor of Pathology.





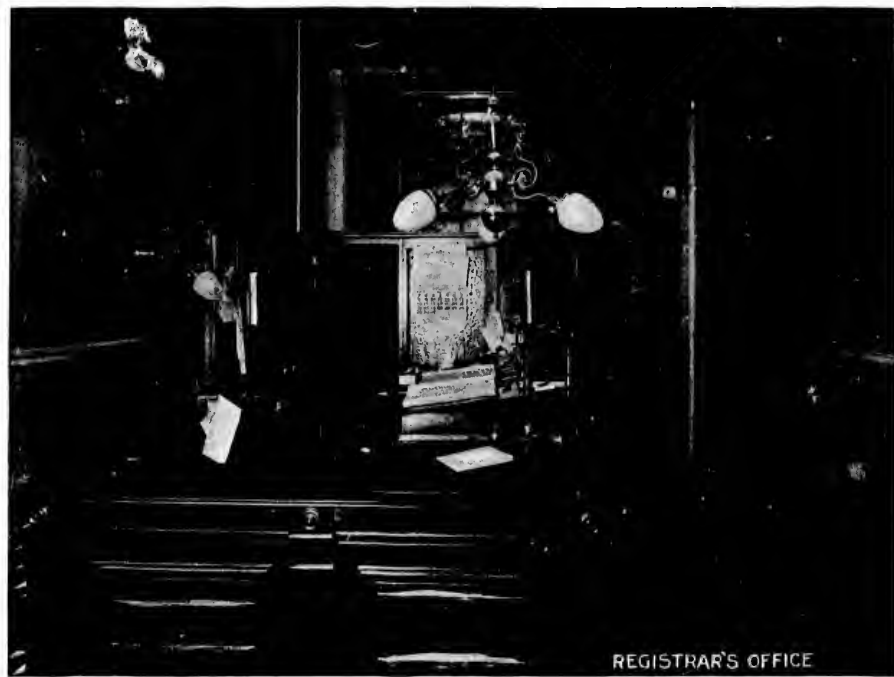
CORNER OF STUDENTS READING & WAITING ROOM.



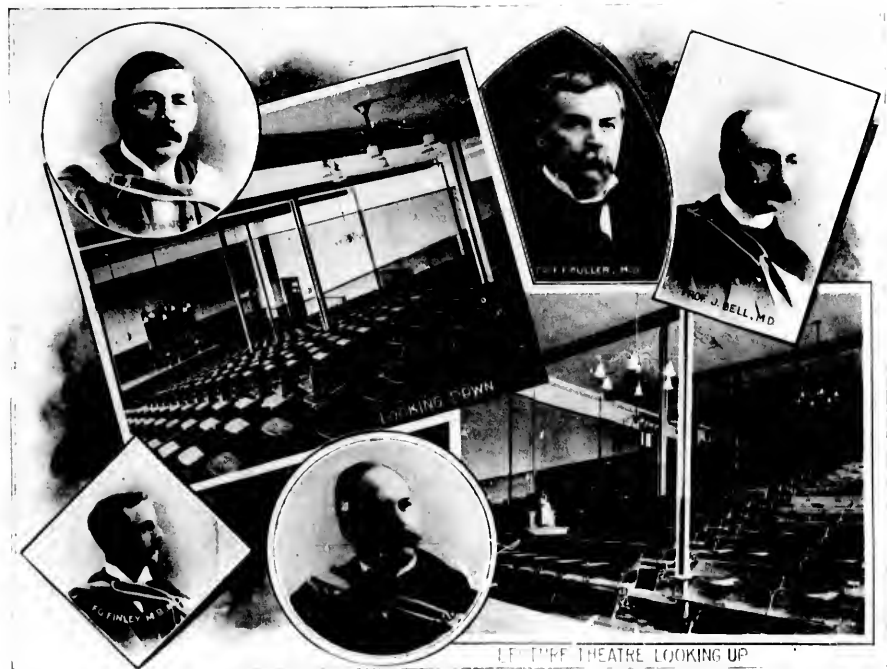
PROFESSORS CLOAK ROOM.




OFFICE OF DEMONSTRATOR IN ANATOMY.



REGISTRAR'S OFFICE



LE THEATRE LOOKING UP

 ABOVE these rooms is the large students' laboratory for pathology, opening into the main building and connected with the private laboratories. Tables and microscopes for thirty to forty students are here provided. This room is also fully equipped with incubators, sterilizers, etc., for work in bacteriology and disinfection. Adjoining it in the main building is also a smaller laboratory for experimental work in disinfection.

The floor above this is for the use of the curators and the articulators of the pathological and anatomical museums.

FROM the students' entrance to the laboratory the mezzanine floor is reached, in which is the upper entrance to the lecture room and the museum of hygiene, which contains interesting working models of filter plants, steam disinfectors, ventilating contrivances, etc. One of the smaller rooms opposite is used to illustrate the water carriage system of removal of house refuse, including modern plumbing.

The botanical laboratories are in the Arts Building adjoining, and are especially equipped for practice courses in morphology and physiology of plants.

On the floor above this are, beginning on the right, the laboratory for normal histology, with two sets of tables for microscopes at different levels and an adjoining private laboratory for special work.





PATHOLOGY

SMALL RESEARCH LABORATORY





PHOTOGRAPHER'S ROOM



CURATORS



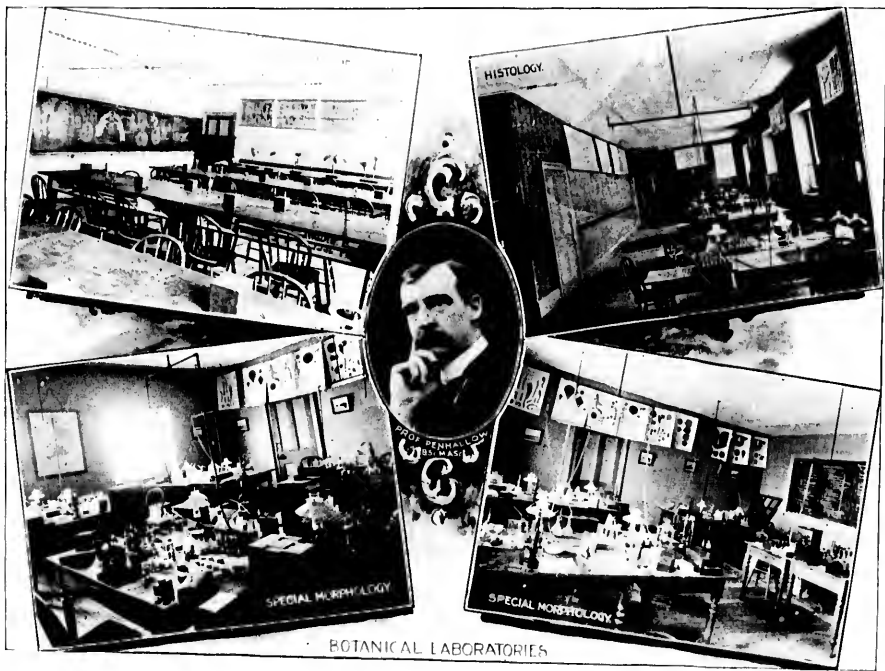
RESTAURANT



NEXT to this is the laboratory and museum of pharmacology, containing a classified collection of typical drugs and therapeutic agents, together with appliances for instruction in pharmacy and elementary experimental pharmacology.

The rest of this flat is occupied by the laboratories for the study of Physiology. They are four in number, one large laboratory for the use of students, two smaller ones connected for special work and the Professor's private laboratory. The students' laboratory is arranged for demonstrations as well as for individual work at the smaller tables.



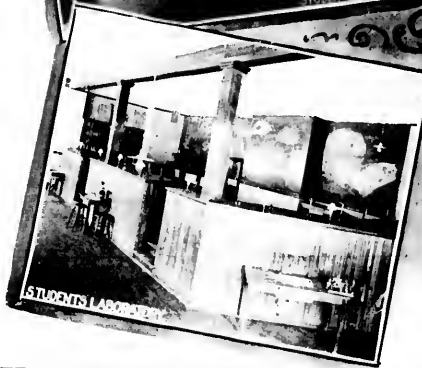


BOTANICAL LABORATORIES

HISTOLOGICAL LABORATORIES



STUDENT LABORATORY



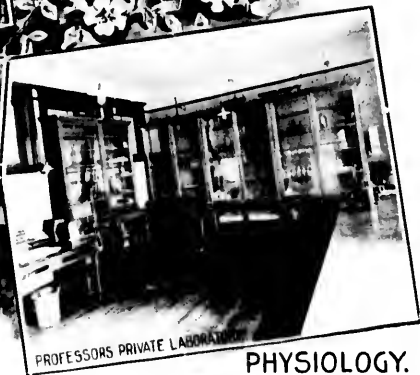
STUDENT LABORATORY



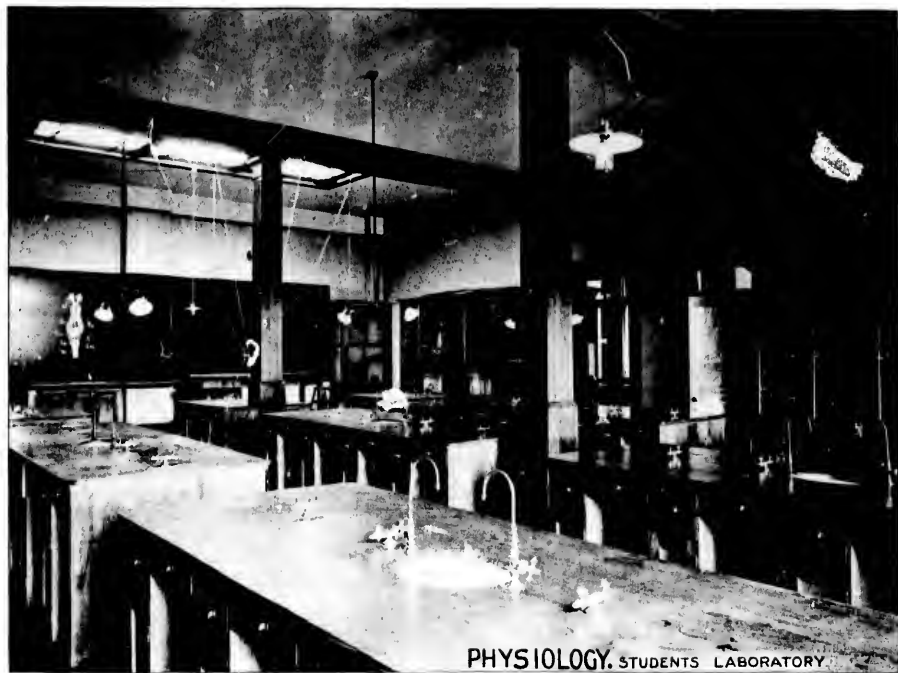
PROFESSOR'S PRIVATE LABORATORY

DESCENDING the staircases near the entrance to the physiological laboratory, the upper floor of the middle and front buildings is reached. This floor is practically reserved for the study of anatomy. The lecture room has the seats arranged in a semi-circle and will seat about three hundred.

Beneath this is a small private dissecting room and demonstrator's room. The private room of the professor of anatomy connects the lecture room with the anatomical museum. This museum contains besides the usual moist and dry preparations and casts illustrating human anatomy (1) an interesting collection of human brains made by Prof. Osler; (2) a collection of skeletons and bones of the extremities of the various orders and classes of vertebrata; (3) numerous frozen cross sections of the human body and a complete set of Steger's brain sections.



PHYSIOLOGY.



PHYSIOLOGY. STUDENTS LABORATORY



THE dissecting room opposite is L shaped, one arm of which is seventy-six feet long by thirty-one feet wide, the other forty-five feet long by thirty-two feet wide. It contains tables for thirty subjects. The floor is of lead; the room is well lighted for work by day or night. It occupies the south and west of the first or oldest building of the series.



LOOKING WEST

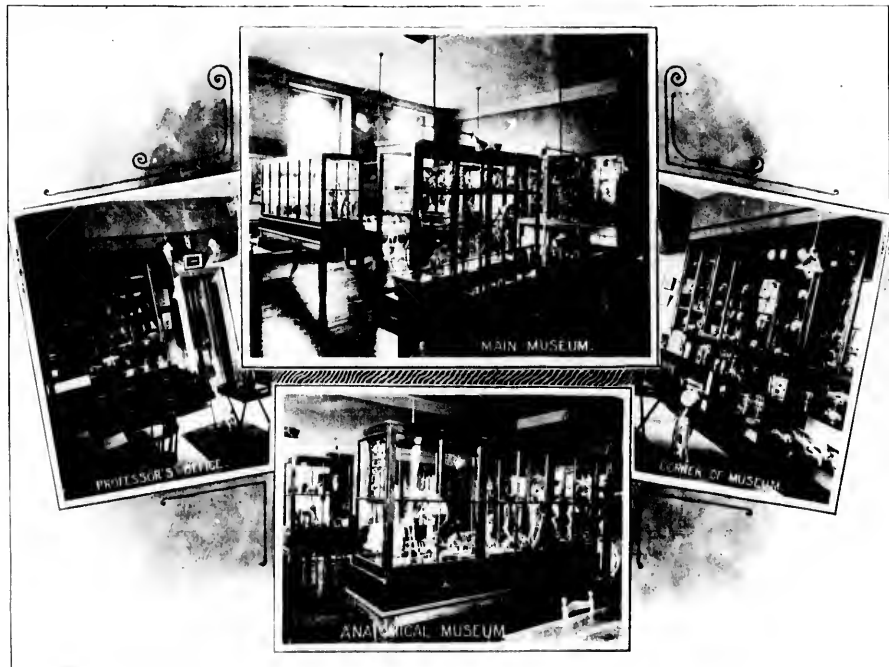


ERIC FRANCIS J. SHEPHERD, M.D.



LOOKING NORTH

1915



MAIN MUSEUM

PROFESSOR'S OFFICE

LOWER OF MUSEUM

ANATOMICAL MUSEUM



ENTRANCE TO PATHOLOGICAL DEPT



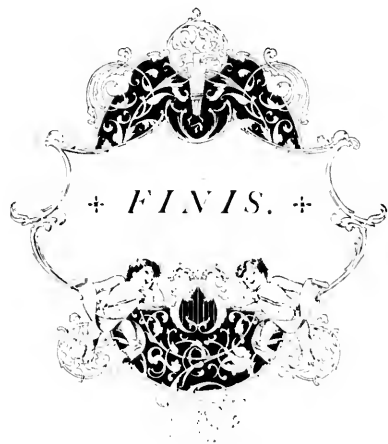
HALLWAY



STAIRWAY UPPER HALL



STUDENTS LOCKER ROOM



+ FINIS. +

