

**CIHM  
Microfiche  
Series  
(Monographs)**

**ICMH  
Collection de  
microfiches  
(monographies)**



**Canadian Institute for Historical Microreproductions / Institut canadien de microreproductions historiques**

**© 1998**

## Technical and Bibliographic Notes / Notes techniques et bibliographiques

The Institute has attempted to obtain the best original copy available for filming. Features of this copy which may be bibliographically unique, which may alter any of the images in the reproduction, or which may significantly change the usual method of filming are checked below.

- Coloured covers / Couverture de couleur
- Covers damaged / Couverture endommagée
- Covers restored and/or laminated / Couverture restaurée et/ou pelliculée
- Cover title missing / Le titre de couverture manque
- Coloured maps / Cartes géographiques en couleur
- Coloured ink (i.e. other than blue or black) / Encre de couleur (i.e. autre que bleue ou noire)
- Coloured plates and/or illustrations / Planches et/ou illustrations en couleur
- Bound with other material / Relié avec d'autres documents
- Only edition available / Seule édition disponible
- Tight binding may cause shadows or distortion along interior margin / La reliure serrée peut causer de l'ombre ou de la distorsion le long de la marge intérieure.
- Blank leaves added during restorations may appear within the text. Whenever possible, these have been omitted from filming / Il se peut que certaines pages blanches ajoutées lors d'une restauration apparaissent dans le texte, mais, lorsque cela était possible, ces pages n'ont pas été filmées.
- Additional comments / Commentaires supplémentaires:

L'Institut a microfilmé le meilleur exemplaire qu'il lui a été possible de se procurer. Les détails de cet exemplaire qui sont peut-être uniques du point de vue bibliographique, qui peuvent modifier une image reproduite, ou qui peuvent exiger une modification dans la méthode normale de filmage sont indiqués ci-dessous.

- Coloured pages / Pages de couleur
- Pages damaged / Pages endommagées
- Pages restored and/or laminated / Pages restaurées et/ou pelliculées
- Pages discoloured, stained or foxed / Pages décolorées, tachetées ou piquées
- Pages detached / Pages détachées
- Showthrough / Transparence
- Quality of print varies / Qualité inégale de l'impression
- Includes supplementary material / Comprend du matériel supplémentaire
- Pages wholly or partially obscured by errata slips, tissues, etc., have been refilmed to ensure the best possible image / Les pages totalement ou partiellement obscurcies par un feuillet d'errata, une pelure, etc., ont été filmées à nouveau de façon à obtenir la meilleure image possible.
- Opposing pages with varying colouration or discolourations are filmed twice to ensure the best possible image / Les pages s'opposant ayant des colorations variables ou des décolorations sont filmées deux fois afin d'obtenir la meilleure image possible.

This item is filmed at the reduction ratio checked below /  
Ce document est filmé au taux de réduction indiqué ci-dessous.

	10x		14x		18x		22x		26x		30x	
	12x		16x		20x		24x		28x		32x	

The copy filmed here has been reproduced thanks to the generosity of:

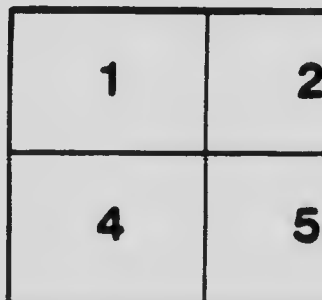
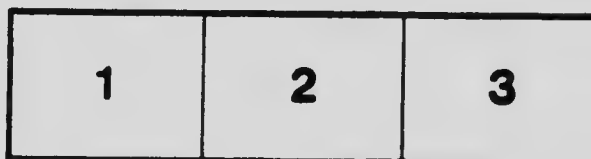
National Library of Canada

The images appearing here are the best quality possible considering the condition and legibility of the original copy and in keeping with the filming contract specifications.

Original copies in printed paper covers are filmed beginning with the front cover and ending on the last page with a printed or illustrated impression, or the back cover when appropriate. All other original copies are filmed beginning on the first page with a printed or illustrated impression, and ending on the last page with a printed or illustrated impression.

The last recorded frame on each microfiche shell contains the symbol  $\rightarrow$  (meaning "CONTINUED"), or the symbol  $\nabla$  (meaning "END"), whichever applies.

Maps, plates, charts, etc., may be filmed at different reduction ratios. Those too large to be entirely included in one exposure are filmed beginning in the upper left hand corner, left to right and top to bottom, as many frames as required. The following diagrams illustrate the method:



L'exemplaire filmé fut reproduit grâce à la générosité de:

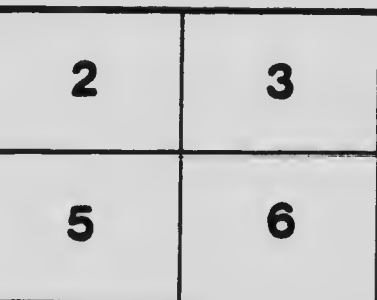
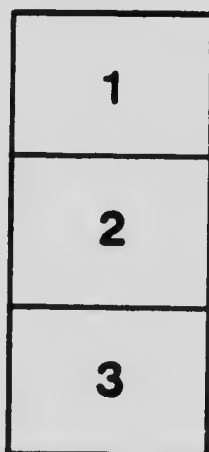
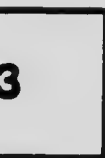
Bibliothèque nationale du Canada

Les images suivantes ont été reproduites avec le plus grand soin, compte tenu de la condition et de la netteté de l'exemplaire filmé, et en conformité avec les conditions du contrat de filmage.

Les exemplaires originaux dont la couverture en papier est imprimée sont filmés en commençant par le premier plat et en terminant soit par la dernière page qui comporte une empreinte d'impression ou d'illustration, soit par le second plat, selon le cas. Tous les autres exemplaires originaux sont filmés en commençant par la première page qui comporte une empreinte d'impression ou d'illustration et en terminant par la dernière page qui comporte une telle empreinte.

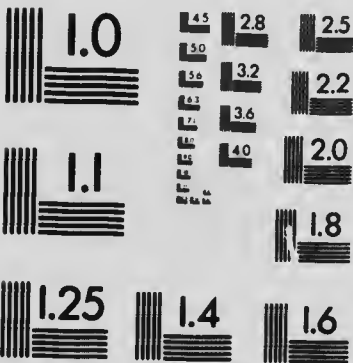
Un des symboles suivants apparaître sur la dernière image de chaque microfiche, selon le cas: le symbole  $\rightarrow$  signifie "A SUIVRE", le symbole  $\nabla$  signifie "FIN".

Les cartes, planches, tableaux, etc., peuvent être filmés à des taux de réduction différents. Lorsque le document est trop grand pour être reproduit en un seul cliché, il est filmé à partir de l'angle supérieur gauche, de gauche à droite, et de haut en bas, en prenant le nombre d'images nécessaire. Les diagrammes suivants illustrent la méthode.



# MICROCOPY RESOLUTION TEST CHART

(ANSI and ISO TEST CHART No. 2)



**APPLIED IMAGE Inc**

1653 East Main Street  
Rochester, New York 14609 USA  
(716) 482 - 0300 - Phone  
(716) 288 - 5989 - Fax

*Circulation 7500 Copies*

Season,

BRYAN'S

1904

# STEAMBOAT AND RAILWAY



# TIME TABLES

TO  
AND  
FROM

# TORONTO

TO  
AND  
FROM

AND

# SUMMER RESORT GUIDE



TORONTO HARBOR.

Issued by Bryan Publishing Co., Toronto.

AC 901

A7

1704

no. 2006  
1704



National Library  
of Canada

Bibliothèque nationale  
du Canada

**B. M. & I. JENKINS**

# The Antique Shop

PHONE MAIN 1275



FOR RARE OLD CHIPPENDALE  
SHERATON  
HIPPLEWAITE  
COLONIAL  
EMPIRE AND

## Antique Furniture

Of every Description in  
Old Mahogany and Rosewood

ALSO OLD CHINA  
OLD GOLD AND SILVER  
BRIC-A-BRAC  
OLD ARMS AND ARMOR  
MINIATURES  
ENGRAVINGS  
CURIOS AND ART OBJECTS  
OF EVERY DESCRIPTION

**422 AND 424 YONGE ST.  
1 TO 15 BUCHANAN ST.  
TORONTO**

BRANCHES: London and Birmingham, England  
2 Phillips Square, Montreal.

The largest collection of genuine Antiques on the Continent.  
Your inspection invited.

5 KING ST. EAST.

# Renfrew's Fur House

The Largest  
Manufacturers of  
**FINE FURS**  
in the  
DOMINION

Our Stock is  
always replete  
with the richest  
.. **FUR** ..  
**GARMENTS**

OUR SHOW ROOMS  
ARE OPEN THE  
YEAR ROUND  
TOURISTS ARE  
CORDIALLY INVITED TO  
LOOK THROUGH.



**CONFIDENCE** is a great thing  
and is enjoyed to its fullest extent by  
those who wear our———**FURS**

---

**HOLT, RENFREW & CO.**

Toronto and Quebec.



**STEWART'S**

**CHOCOLATES**

A. J STEWART LIMITED M<sup>N</sup>F<sup>R</sup>S.  
TORONTO.

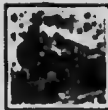
**ENAMEL SOUVENIRS**

- |                       |             |
|-----------------------|-------------|
| BREAST PINS           | SPOONS      |
| MATCH SAFES           | FORKS       |
| CUFF LINKS            | SUGAR TONGS |
| PAPER KNIVES In       | SASH PINS   |
| Gold, Silver & Bronze | BROOCHES    |
|                       | STICK PINS  |
| POCKET KNIVES         |             |
| 1000 Styles           |             |
| RAZORS                |             |
| All Kinds             |             |

*Nicholsons*  
CUTLERY STORE  
80½ YONGE ST



**BRYAN'S**  
**Steamboat and Railway**  
**TIME TABLES**



**GENERAL INDEX**

<p>P. 27-9 Richelieu &amp; Ont. Nav. Co. 31 Niagara, St. C., &amp; Tor. Nav. Co. 35 Merchants' Line 33 South Shore Steamboat Line 29 Hiawatha Nav. Co. (Oakville) 37 Grand Trunk Railway</p>	<p>P. 23-5 Niagara River Line 29 Turbine Steamship Co. 33 Lake Ontario Nav. Co. 35 Toronto Ferry Co. 35 Hamilton Steam'b't Co. 39 Canadian Pacific Ry.</p>
--	--

**LOCAL AND SUBURBAN LINES.**

41 Toronto Railway Co.	43 Metropolitan Railway
43 Tor & Mimico Railway	43 Toronto & Scarboro Railway
43 Toronto Suburban Railway.	

**RAILWAY AND STEAMBOAT CONNECTIONS.**

- AT WITH**
- Buffalo.** - Buffalo, Rochester & Pittsburg R.R.; Cleveland & Buffalo Transit Co.; Delaware, Lackawanna & Western R.R.; Detroit & Buffalo Steamboat Co.; Erie & Buffalo Steamboat Co.; Erie & Western Transp. Co.; Erie R.R.; Grand Trunk R.R.; Lake Shore & Michigan Southern R.R.; Lehigh Valley R.R.; Michigan Central R.R.; New York Central & Hudson River R.R.; New York, Chicago & St. Louis R.R.; Northern Steamship Co.; Pennsylvania R.R.; Wabash R.R.; West Shore R.R.
- Charlotte.**—New York Central & Hudson River R.R. and Electric Line to Rochester
- Clayton.**—New York Central & Hudson River R.R.; Rome, Waterdown & Ontario R.R.
- Grimsby.**—Grand Trunk R.R.; Hamilton, Grimsby & Beamsville Ry.
- Hamilton.**—Grand Trunk R.R.; Toronto, Hamilton & Buffalo R.R.; Hamilton, Grimsby & Beamsville Ry.; Hamilton & Dundas El. Ry.; Radial El. Ry
- Kingston.**—Grand Trunk R.R.; Kingston & Pembroke R.R.
- Lewiston.**—New York Central & Hudson River R.R.; Niagara Gorge R.R.
- Montreal.**—Canada Atlantic R.R., Canadian Pacific R.R., Central Vermont R.R., Grand Trunk R.R., Delaware & Hudson R.R., Rutland R.R.
- Niagara-on-the-Lake.**—Michigan Central R.R.
- Port Dalhousie.**—Niagara, St. Catharines & Toronto Ry.
- Queenston.**—International Ry.
- Brockville**—Canadian Pacific R.R., Grand Trunk R.R.
- Prescott.**—Canadian Pacific R.R., Grand Trunk R.R.
- Rochester.**—New York Central & Hudson R.R.; Buffalo, Rochester & Pittsburg R.R.; Lehigh Valley R.R.; West Shore R.R.

◆ The Publishers assume no responsibility for any errors or omissions contained in the various Time Tables, or for any failure of companies observing strictly their advertised time of leaving or arriving.

## 4 Steamboat & Railway Time Tables

### ADVERTISEMENTS

Readers of this compilation desirous of making purchases, or otherwise patronizing Advertisers, are confidently recommended to those whose advertisements appear herein.

**BINGHAM'S.**—The finest and best equipped Drug Store in Toronto. Dispensing a specialty. Always open. Headquarters for Toilet Requisites and Perfumes, and **Bingham's Celebrated Ice Cream Sodas.**



**BINGHAM'S PALATIAL DRUG STORE & PALM GARDEN,**  
100 Yonge Street, Toronto.

**RAILWAY INSTRUCTION.**—An institution which has become an important factor in the Railway world, and having the endorsement of the leading railways of Canada, is the Canadian Railway Instruction Institute, Oddfellows' Building, corner College and Yonge streets, Toronto. The purpose of this Institute is to teach Practical Railway Station Work in all its varied branches—Telegraphy, Standard Rules, Train Despatching, Freight and Ticket Clerk's work, and Agent's



**ODD FELLOW'S BUILDING,**  
College and Yonge Sts., Toronto

Duties - thereby enabling all pupils to become practical men, capable of taking a position upon graduating. An important feature of the institution is the thorough training in copying telegraphy by typewriter, the Institute being equipped with every modern appliance known in the Railway or Commercial Telegraph Service. By taking a course here—the only institution of its kind in Canada - positions are guaranteed students upon graduating.

## Railway and Steamboat Offices.

### PASSENGER AND FREIGHT

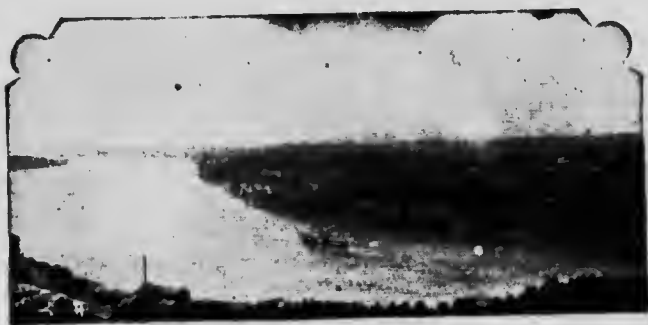
- Calgary and Edmonton Ry., 18 King W., Main 3952  
 Canadian Lake and Ocean Nav. Co., 56 King E., Main 4337  
 Canada National Ry., 33 Tor. Arcade  
 Canadian Northern Ry., King and Toronto, Main 322  
 Canadian North West Steamship Co., 31 Yonge, Main 2061  
 Canadian Pacific Ry., 1 King E. and Union Station, Main 441  
 Chicago, Milwaukee and St. Paul Ry., 8 King E., Main 275  
 Chicago and North-Western Ry., 2 King E., Main 2926  
 Chicago, Rock Island and Pacific Ry., 77 Yonge, Main 2131  
**Delaware, Lackawanna and Western Ry.**, 37 Yonge, Main 3347  
 Erie Railroad, 31 Yonge Main 384  
**Grand Trunk Ry.**, N.W. cor. King and Yonge and Union Station, Main 441  
 Great Northern Ry., 10 King E., Main 1006  
 Hamilton Steamboat Co., Yonge Street Wharf, east side, Main 1170  
 Hiawatha Nav. Co., 31 Yonge, Main 2064, and Yonge Street Wharf  
 Illinois Central R.R., N.W. cor. King and Yonge (G.T.R.), Main 1209  
 Intercolonial Ry. of Canada, 51 King E., Main 554  
 International Ry., 8 King E., Main 275  
**Lake Ontario Nav. Co.**, Geddes' Wharf, Main 1075  
**Lehigh Valley Ry.**, Passenger Office—10 King E., Main 1588; Freight—  
 31 Yonge, Main 1254  
 Merchants' Despatch Transp. Co., 40 Yonge, Main 2217  
**Merchants' Line**, King, N.E. corner Yonge and Geddes' Wharf, Main 600  
**Metropolitan Ry.**, 61-3 Yonge, Main 2102; North Toronto, North 1100  
 Montreal and Chicago Merchants' Shipping Co., 33 Richmond W., Main 783  
 Midland Nav. Co., 23 Toronto, Main 218  
 Muskoka Lakes Nav. and Hotel Co., 23 Toronto, Main 218  
**New York Central and H. R. Ry.**, Passenger Office—(10) Yonge, Main 4361;  
 Freight—31 Yonge, Main 105  
**Niagara Gorge R.R.**, 40 Toronto, Main 2010  
**Niagara Nav. Co.**, 14 Front E., M. 864; Yonge St. Wharf, east side, M. 228  
**Niagara, St. Catharines & Toronto Nav. Co.**, Yonge St. Wharf, east  
 side, Main 2553  
**Northern Pacific Ry.**, 6 King W., Main 2104  
 North-West Transportation Co., 77 Yonge, Main 2131  
 Pennsylvania Railroad, 31 Yonge, Main 3715  
 Prince Edward Island Ry., 51 King E., Main 554  
 Qu'Appelle, Long Lake and Saskatchewan R. & S. Co., 18 King W., M. 8952  
 Richelieu & Ontario Nav. Co., 2 King E., M. 2826; Yonge St. Wharf, M. 2555  
 Southern Pacific R.R., 75 Yonge  
**South Shore Steamboat Line**, 80 Yonge, Main 2300; Yonge St. Wharf  
 St. Lawrence and Chicago Steam Nav. Co., 31 Yonge, Main 1170  
 Temiskaming and Northern Ontario Ry., 24 King W., Main 1327  
**Toronto Ferry Co.**, 75 Yonge and Yonge St. Wharf, Main 2065  
**Toronto Railway Co.** and Suburban Lines, 92 King E., M. 2087  
**Toronto Suburban Ry.**, 6 Keele St., Toronto Junction—June 4  
**Turbine Steamship Co.**, N.E. King and Yonge, M. 202; Geddes' Wharf  
 Union Pacific Ry., 75 Yonge  
 Wahash Ry., N.E. cor. King and Yonge, Main 202  
**West Shore R.R.**, 63/2 Yonge, Main 4361; Freight 31 Yonge, Main 105

### GENERAL AGENTS AND OFFICES.

- |  |                                   |
|--|-----------------------------------|
| BOURLIER, H. C., 77 Yonge  | ROBINSON & HEATH, 14 Melinda      |
| BRENT, STANLEY, 8 King E.  | SHARP, S. J., 80 Yonge            |
| GARFINKEL, S. & SON, 176 1/2 Queen W                                       | THOMPSON, F. C., 28 Wellington E. |
| IRWIN, C. W., 40 Yonge   | TORRANCE, G. W., " "              |
| MELVILLE, R. M., 40 Toronto  | UNION TICKET OFFICE, King Edward  |
| McMURRICH, GEO., 4 Leader Lane   | Hotel                             |
| PIPON, C. A., 41 King E.   | WEBSTER, A. F., N.E. cor. King &  |
| <b>Reford, Robert, Co.</b> , (D. O. Wood,<br>W., Agent), 31 Yonge, M. 1045 | Yonge                             |

**NIAGARA RIVER LINE.**—One of the pleasurable outings is the trip to Niagara, Lewiston and Queenston, thence to Niagara Falls and Buffalo. Niagara-on-the-lake, 36 miles distant from Toronto, and originally called Newark up to 1794, was once the Capitol of Upper Canada, and on account of its historical associations has especial interest for visitors. Here may be observed the remnants of Fort Mississauga, built in 1814, and also of Fort George, built in 1792. Upon entering the mouth of the Niagara River may be seen the famous Queen's Royal Hotel, majestically situated in spacious grounds. Directly opposite on the American shore, stands Fort Niagara, occupied constantly by a regiment of the U.S. Army. At the wharf of Niagara, timed with the steamer's arrival, the Michigan Central R. R. makes connection for Niagara Falls and Buffalo.

Leaving behind the famous old town, the steamer swings gracefully along the winding river, passing on its way Paradise Grove on the Canadian side, and the old village of Youngstown, N Y., on the opposite side.



Along the winding river for seven miles the steamer glides, passing numerous effective landscape views, presently showing the ancient and historical villages—Lewiston, N.Y., and Queenston, Ontario, between which there is connection by the new suspension bridge, and by the local river steamer, "Ongiara." Here are to be seen many historical features, dating back to the war of 1812.

Directly facing the river and gorge, above the steamboat landing, where an excellent view is to be had of Brock's Monument, stands the Cornell House, a commodious and picturesque summer resort hotel with wide piazzas, and largely patronized by Canadian and American tourists, who appreciate the beautiful surroundings and the fine opportunities for boating and fishing, in addition to the advantages of rapid transit to and from Lewiston.

The accommodation is of a high order at the Cornell, where the rates are but \$2 a day, with reduced rates by the week.

Connecting with the arrival of the steamers at Lewiston are the trains of the New York Central and the Niagara

Gorge Railroad, with an hourly service to Buffalo by the former, and every ten minutes to the Falls by the latter. The Great Gorge route is the best known and most popular railroad in the country. It is double tracked the entire length, rock ballasted, and provided with every safety appliance known in modern railroad building.

After leaving the steamers at Lewiston the cars of the Great Gorge Route start out following the course of the Niagara River. Shortly the cars pass under the remnants of old Fort Gray, which was established by the American Army in 1812. In the valley is the famous Bloody Run or Devil's Hole, the Lower Rapids. Continuing the journey through the canyon, we next see the Giant Rock. In the midst of this marvellous scenery is a beautiful wooded park, named "Ongiara," where passengers may rest amid rustic surroundings and marvellous scenery.



SCENE ON THE GORGE LINE.

Then the Whirlpool is reached, which is such a grand phenomena, and shadowed by the great frowning walls of rock on either side, 200 and 300 feet high, with the richest verdure covering the side at the base.

Grand Whirlpool is next presented above all others the most awe-inspiring. This passed, the river rests awhile, circling the sullen whirl, when huge logs, floating debris, etc., are seen to toss their ends high in the air and to be sucked down only a moment later into the vortex of the maelstrom.

The Whirlpool Rapids, moving slowly in solemn smoothness, as though resting after a terrible leap, here rise like maddened horses and with the greatest force are lashed into fury. Following still the river bank a gentle grade is reached, passing under the great Steel Arch Bridge of the Grand Trunk Railway, and along the top of N. W. bank, with the river to the right and massive cliffs of rock 300 feet high the cars pass up to the entrance of the town of Niagara Falls, stopping opposite all Railway Depots.

**NIAGARA FALLS, N.Y.**—Upon arriving at the Falls, naturally everyone on pleasure bent wants to visit the scenes of most interest and without too much expense. The best and



VIEW OF THE FALLS

in the end the cheapest way of seeing the wonders of Niagara is to employ the services of The Miller and Brundage Coach Co., whose gentlemanly and reliable agents will be found in all depots and on all through trains running into Niagara Falls, or by applying at any of the local hotel offices. By adopting this course visitors avoid paying exorbitant charges for carriage service by irresponsible cabmen.

A few of the points of interest worth seeing are Niagara Reservation, Bath Island, Goat Island, Terrapin Rocks, Cave of the Winds, Three Sister Islands, the Whirlpool Rapids, American Falls, Horse Shoe Falls, Hermit's Cascade, Prospect Park, etc. To enter right into the heart of Niagara, The Maid of the Mist Steamboat Company has made it possible for sightseers to witness and experience things nowhere else occurring in the world. Two staunchly built boats, well fitted, run close to the foot of both falls, where the waters foam about the bows and the spray drives with blinding force over the vessel. As the boat enters the seething cauldron the passenger is apt to feel a little timid, but the fear loses itself in the grandure of the scene, viewed through the veil of mist and spray.

Close to Prospect Park, situated on Falls St., corner of Main St., is the New England Restaurant and Lunch Counter, Mr. A. N. Whittier being the proprietor. A really excellent full course meal is served here for 35 cents, and for Canadian visitors is most convenient.



NEW ENGLAND RESTAURANT, NIAGARA FALLS, N.Y.

The Gorge Line and the Niagara, St. Catharines and Toronto Railway Cars pass the door.

Pleasantly located, in a residence section, close to the Falls and within two blocks of the depots, is the Hotel Columbia, corner Niagara and First streets, managed by Mr. W. G. White, the genial proprietor. The home-like surroundings of the Columbia, its comfortable rooms, its good table service—which is the best the market affords—and its convenience, makes it a very desirable hotel to patronize. The rates are \$2.00 a day—American Plan. A good dinner may be had here at 50 cents.

**BUFFALO, N.Y.**—Located in the business centre is the Iroquois, certainly one of the finest hotels on the continent, and notable as the rendezvous of the best class of travellers. In this large and magnificently furnished hotel, so thoroughly well managed by Messrs. Woolley & Gerraans, everything tending to comfort and contentment of guests is contributed generously. No one can leave the Iroquois with other than a feeling of perfect satisfaction. The Marie Antoinette, Broadway and 67th Street, New York, and the Grand Union, Saratoga Springs, N. Y., are also under the same management as the Iroquois, and affording all that is to be desired in the way of first class accommodation and sumptuous surroundings. The Grand Union is the largest summer resort hotel in the world, and during the coming season Victor Herbert's Famous Orchestra will give two concerts daily, personally conducted by Mr. Herbert.

**LOCAL AND SUBURBAN SUMMER RESORTS.**—Beautifully located on the charming Scarboro' bluffs, overlooking Lake Ontario and Ashbridge's Bay, is Munro Park, reached by the lines of the Toronto Railway Company for one fare from any part of the city, and most a charming spot to visit. The 26 acres of thickly wooded ravines which compose the Park were acquired by the Railway Company about six years ago. A magnificent pavilion has been erected for the free use of all. It has a breadth of 80 feet and a length of 175 feet, and is fitted with all conveniences for the pleasure and comfort of picnic parties, moonlight excursions, etc. At night it is ablaze with thousands of incandescent lights, and the Park is well illuminated with numerous arc lights. During the summer high-class entertainments are held every week-day at 3 p.m. and 8-15 p.m. Being, as beforementioned, the property of the Toronto Railway Company, no effort is spared by them to make it the most attractive and popular park in the neighbourhood of the city. The cars run right into the Park (that is, the King Street line), and transfers are given on any line in the city to and from the Park. The improvements inaugurated make Munro Park the finest of its kind in the Dominion.

**LAMBTON PARK.**—A very interesting journey and one full of enjoyment is the trip *via* the Bathurst or Queen and Dundas car lines, connecting with the Toronto Suburban Railway at Toronto Junction, for Lambton Mills, Lambton Park,



## 10 Steamboat & Railway Time Tables

Highland Golf Club, and the Lambton Golf and Country Club. The point of chief interest is Lambton Park, a popular pleasure resort on account of its delightful situation in the picturesque Humber valley, where scenic views of splendor abound on every side. To ramble by the river side and through the leafy woods is one of the delights of all who visit this pretty spot. For picnic parties it is an ideal resort, especially for the children. Another pleasurable excursion over the 'Companies' lines is to Weston, Mount Dennis and Buxtonwood. Connection is also made for Carlton, Davenport and Bracondale.



EXCURSION PARTY ON THE TORONTO SUBURBAN RAILWAY CO. CARS.

**BOND LAKE PARK.**—Midway between Richmond Hill and Aurora, on the line of the Metropolitan (Electric) Railway, is Bond Lake Park, comprising about 200 acres, prettily situated on rising ground—the elevation here being 720 feet above the level of Lake Ontario—and a beautiful inland lake 55 acres in extent, the waters of which are cool and clear, and sheltered on every side. Within the park, which at night is brilliantly illuminated, are many beautifully wooded trees, such as cedar, spruce, maple, pine and other varieties; a splendidly shaded promenade, a magnificent dancing pavilion, numerous swings and rain shelters scattered throughout. In the pavilion is a booth for the sale of fruit, confectionery, soft drinks, ice cream, tea, coffee, cigars, etc. On the waters of the lake a handsome motor launch plies between different points; and for those who prefer rowing, boats are available. The park and lake are certainly among the most enchanting spots of Ontario, and for Sunday school picnics or other excursion parties is an ideal place, particularly for the little ones, who may freely rove around to their hearts content.

For the convenience of parties the management supply without charge hot water, tables, benches, etc., while iced water for drinking purposes is placed at intervals throughout the park. As a picnic resort Bond Lake and vicinity stands unrivalled. For rates apply to the Metropolitan Ry., Traders' Bank Chambers, Tel. Main 2102 and North 1909; or to Manager's private address, North 2348.

**PORT DALHOUSIE, ST. CATHARINES, NIAGARA FALLS.—**

A route, popular with excursionists, and becoming more so every season, is the trip to Port Dalhousie, thence into the beautiful Niagara District *via* the Niagara, St. Catharines and Toronto Navigation Co.'s Steamers, "Garden City" and "Lake Side." This journey is really delightful and is appreciated by all who have taken it.

Port Dalhousie, a town of about 1,000 people, is picturesquely situated on the east side of the Welland Canal, and during the season visitors by the thousands watch with varied interest the passing of water craft through the locks

From Port Dalhousie to St. Catharines, a distance of four miles, there is a long stretch of the old canal, a fine body of water, sheltered from the roughness of the lake, which makes it especially suitable for boating of all sorts

One can leave Toronto, reaching the Port two and a half hours later, and return same day before nightfall. Should one desire a full day's outing, the early boat will enable a run

from the Port *via* the Niagara, St. Catharines and Toronto Ry. to St. Catharines, an inland city of 10,000 population, thence passing through the thriving towns of Merritton and Thorold to



THE WELLAND, ST. CATHARINES, ONT.

Niagara Falls, where several hours may be spent in sight-seeing,

The overland journey, made in a magnificently fitted Electric Car, is through a rich and picturesque district, aptly designated the Garden of Canada. The entire journey is full of interest, and for those who have not taken this route there is a treat in store.

At St. Catharines there is an excellent hotel, The Welland, which has accommodation for 150 guests—it is a happy combination of sanatorium—rest, cure and family hotel, fitted with all modern conveniences. Among the features of this hotel are a large music room, ladies' and gentlemen's billiard rooms and gymnasium, play grounds, boating, fishing and beach bathing. The St. Catharines Well, the properties of which are known far and wide, is situated here. Rates at the Welland are from \$14 to \$22 a week, including board, physician, baths, attendant and Massage. For particulars apply to Malcolmson Bros., St. Catharines; or to any G. T. Ry. ticket Office.

In close proximity to the headquarters of the Niagara, St. Catharines and Toronto Ry. is the Grand Central Hotel, one of the old landmarks of the city, and familiar to the traveling public for many years. Under the new management the Grand Central has recently been refurnished and is now complete in all its arrangements. The sample rooms for commercial men are thoroughly up-to-date, and in other respects this house affords special advantages for tourists.

**NIAGARA FALLS, ONT.**  
 charming view of the Gorge and surroundings.

— To secure a Falls, River and the Lafayette af-



fords especial opportunities to its guests on account of its advantageous location. It is an excellent hotel for accommodation. The rates run from \$2 to \$3 a day.

When visiting Queen Victoria Park, a point of decided interest is the New Refectory Building, just opposite both falls and Upper Rapids, where a splendid view can be obtained. In the Refectory Building, besides other conveniences, there is a first-class restaurant, much appreciated by visitors. Further up in the park is the old Table Rock House, where can be had a waterproof dress, which is donned before descending by the New Electric Elevator below the Falls and through the Scenic Tunnel behind the green water of Horse Shoe Falls. The scenery here is pronounced the finest in the world.

Close by the Grand Trunk Ry. Station, at Niagara Falls, and but a few steps away from the New Bridge stands the Hotel Savoy, a house most favorably known to Niagara's

many visitors, presided over by Mr. J. Dickenson, who is very popular with his guests. The hotel contains 40 cosy and comfortable rooms, and in the near future will be added to considerably. In every respect is the Savoy modern. Rates here are very moderate.



THE SAVOY HOTEL, NIAGARA FALLS, ONT.

**TORONTO TO MONTREAL.** A favorite and certainly an exciting trip is the journey across the lake to Charlotte, N. Y., and thence down the lake until Kingston, Ont., is reached. From this point the passage becomes real interesting, as the descent of the river St. Lawrence begins showing its thousands of little Islands, which extend all the way from Kingston to Brockville. Clayton, N. Y., is the next stop. Then follows Frontenac, N. Y., three miles east of Clayton, Thousand Island Park, N. Y., and Alexandria Bay, N. Y., ten miles from the latter place, with 163 miles yet to run before Montreal is reached. Brockville, on the Canadian side, is the next stopping point. Then comes Prescott, at which port passengers change to one of the R. & O. Co. Steamers, from whence is entered upon the Rapids of the St. Lawrence—daylight illuminating the scene from Thousand Islands to Montreal. The passage through the Rapids is very thrilling, and the scenic views enchanting. The run through the Long Sault Rapids, which is nine miles in length, is alike to the sensation of sliding down hill, the fall being 48 feet. Close to the foot of the Rapids is the old Indian Village of St. Regis, nearly opposite which is Cornwall, the next port of call, and where passes through the Cornwall Canal, twelve miles in length—vessels from the east using it to avoid the Rapids. Three miles below Cornwall is Stanley Island. From here, for the next 30 miles, the river widens out into Lake St. Francis. Coteau Landing, which is 44 miles from Montreal, is next touched at. Leaving Coteau, a run of two miles is made through the Coteau Rapids. Then follows the Cedar Rapids, the Split Rock Rapids—which is with difficulty navigated—and the Cascade Rapids; the fall of these four Rapids being 84 feet. On the north side, from Coteau to Cascade point, the Soulanges Canal parallels the river. For the next 12 miles the river widens out and is called Lake St



STEAMER KINGSTON

Louis, at the east end of which, on the north, is the town of Lachine, and opposite, the village of the Caughnawages Indians. Passing under the C. P. R. Bridge, the Lachine Rapids are entered upon—the last of the most exciting chain—with a fall of 45 feet. The exciting run continues until the steamer passes beneath the Victoria Bridge, and shortly lands its passengers at the wharf at Montreal.

**GRIMBSY PARK.** -The only Canadian Chautauqua, recognized as Canada's leading summer resort, is situated on the southern shore of Lake Ontario, and is reached by the steamer, City of Owen Sound, the Grand Trunk Railway, and the Hamilton, Grimbsy and Beamsville Electric Railway. The park is distant thirty miles from Toronto, and twenty-five miles from Niagara Falls.

The enclosure of this popular resort comprises about one hundred acres, a large part of it being maintained in forest, through which winding walks have been tastefully laid out. The area of land devoted to summer residences displays groups of excellent structures most picturesque in design, and many canvas tents almost equalling them in taste and beauty. During the months of July and August there is a constant succession of Lectures and Concerts from famous public speakers and singers, along with other first-class entertainments provided by the very best talent available.



A GRIMBSY PARK SCENE.

A spacious lawn affords every opportunity for pleasant recreation in the open air, in addition to boating and bathing facilities, which the young and old can enjoy to their heart's content. The fresh lake breezes, the pure spring water to drink, the abundant supply of fresh fruit at hand, and other advantages, all combine to give Grimbsy Park a most enviable reputation as a health resort. Within the grounds, under the park management, are two excellent residential hotels for the accommodation of summer guests, namely, the LAKE VIEW HOUSE and the PARK HOUSE. The latter house is open to receive guests about the 20th May, the prevailing rates running from \$1 to \$1.50 per day. At the former house, which opens about July 2nd, the rates extend from \$2 to \$2.50 per day. When rooms are engaged by the week or month reduced rates are made. For further information in regard to either hotel, enquiries should be directed to J. H. Ford, managing director, Grimbsy Park Co., Grimbsy Park, Ont.

**TORONTO HOTELS.**—The Queen's Hotel has always been famous among the better class of travellers for its home-like comforts. As a Family hotel it is in every way desirable, possessing all the features of the first-class hotel. It is pleasantly situated in quiet surroundings and in summer is delightfully cool. Being close to station and steamboat wharves it is most convenient. The rates here run from



The **QUEEN'S HOTEL**, Toronto.

\$2.50 per day and upwards. The Elliott House of Toronto is one of the best equipped hotels, at \$2.00 per day, in the country for tourists. It is located but a short distance from the business centre, corner Church and Shuter Sts., in a quiet dis-



The **ELLIOTT HOUSE**, Toronto.

trict, and faces the spacious grounds and Metropolitan Church and will be found highly satisfactory. A favorite Tourist and Family Hotel, centrally situated corner York and King Sts., and most convenient to Union Station and steamboat wharves, is the Iroquois. Geo. A. Graham, proprietor. Throughout this popular hotel every modern convenience exists for the comfort of guests. The rates here run from \$2.00 to \$2.50 per day.



The **IROQUOIS HOTEL**, Toronto

Situated at corner Front and Simcoe streets—the first building west of the Union Station—stands the Daly House, the proprietor of which is Mr. T. E. Doncaster. This is a



The DALY HOUSE, Toronto.

very convenient and moderate priced hotel, the rates being \$1.50 per day, and lower by the week. Courteous and generous treatment is assured all guests, Located in a commanding position on Hanlan's Point—Toronto's favorite summer resort—is the Hotel Hanlan, famous for its satisfying comforts. The surround-

ings make it a very desirable place to spend the summer season, especially on account of the many opportunities for enjoyment. This up-to-date hotel is under the management of Mrs E. Sutton, to whom enquiries for terms, etc., should be directed.

**PRIVATE BOARDING RESIDENCES.**

Centrally located on a fine residential street, amid quiet surroundings is the Marlborough, an excellent private hotel, quiet and homelike, in connection with which is an annex containing separate suite o-



HOTEL HANLAN, Hanlan's Point.

rooms, with bath attached—a feature of the Marlborough which has proved popular. The table service is particularly good, especial care being given to this department. The

accommodation here is equal to any first-class hotel. In the appearance of Mrs. Mead's home there is nothing to denote the boarding house of popular conception. This handsome residence at 266 Bloor Street West in its luxurious furnishings resembles more the home



The MARLBOROUGH, 208-214 Jarvis St

of a wealthy citizen. Accommodation is available for 35 guests, the rates ranging from \$9 to \$15 per week. Ellesmere

House at Island Park is also conducted by Mrs. Mead, Amidst pleasant surroundings, at 582 Sherbourne St., corner



MRS. MEAD'S HOME, 266 Bloor St. W.

rooms being available from \$8 per week ; double rooms from \$12 Chateau Bonhuer is splendidly furnished, and is an excellent private boarding residence. The Abberley, 256-258 Sherbourne Street, near the beautiful Allan Gardens is another popular and handsomely appointed house, especially attractive to ladies visiting the city. The Abberley is conducted with a view to furnishing comfortable and home-like accommodation to people of refinement. The rates are \$1 per day and upwards. Guests can be assured of first class table service.

of Linden, stands the Chateau Bonhuer, a high-class boarding residence, which is conducted by Mrs. E. G. Sorley. In this large and well managed house there is accommodation for upwards of 25 guests ; single



CHATEAU BONHUER, 582 Sherbourne St.

**SHAFTESBURY DINING HALL.**—A very popular restaurant with the down-town business class, and largely patronized by visiting tourists, is the Shaftesbury Restaurant and Coffee House, situated at 13 and 15 Richmond Street West. It is



SHAFTESBURY DINING HALL, Toronto

quite centrally located — close by Simpson's Departmental Store — and just a few steps from the corner of King and Yonge streets. It is the oldest established restaurant in Toronto, and is known the Province over. The dinner service, which ranges in price from 20c. to 25c., is conceded to be the best.



**HAIR DRESSING PARLOR.**—Close by the King Edward Hotel (Colborne Street Entrance) at No. 17, is situated the MOST PALATIAL ESTABLISHMENT in Toronto, named the "NEW BANK."

In appointments it is undoubtedly the MOST ARTISTIC, THOROUGHLY ANTI-SEPTIC, BRILLIANTLY LIGHTED and BEST EQUIPPED BARBER SHOP in CANADA. There



are 10 CHAIRS 'NEW BANK' BARBER SHOP, 17 Colborne St. and only SKILLED ARTISTS in charge, NO DELAYS, courteous attention. A call is solicited PETER BRUNET, proprietor.

**RESTAURANT—**

Opposite the Grand Opera House—20-22 Adelaide St. West, and only a few steps from the Yonge St. Wharf, is Wilson's New Restaurant—a combination lunch counter and dining room, where from 20 cents to 25 cents a very good meal can be had. The appointments are new the service prompt. This is a very convenient place to be quickly served.

**RESTAURANT.**—Alongside the General Post Office, at 44 Adelaide Street East, is situated the New Post Office



The GENERAL POST OFFICE.

Restaurant, conducted by Mr C. J. Evans, an experienced caterer. The location of this stand is most convenient for tourists and the local business public. Herein one may be served at very moderate rates. The cuisine being excellent, visitors

can depend upon quick and prompt attention.

**COACH DRIVE.**—The traveller intent upon seeing Toronto in a day should certainly take a drive around the city by



one of G. W. Verral's Ascot Coaches, which enables the sight-seer to witness the principal scenes and hear descriptions by a competent guide. The coaches are finely built and are drawn by

our splendid horses, manned by a liveried coachman and footman. Each morning and afternoon the coaches call at the several hotels, and proceed along the most beautiful parts of the city. The routes are not less than ten miles. The fare for round trip is \$1. Seats secured at office, 61 York Street. Phone M. 123.

**BURNS MONUMENT.**—Standing in a conspicuous location within Allan Gardens (formerly named the Horticultural) is a most striking monument, life-size, of Robert Burns, the greatest of Scottish poets, dedicated to his memory by the Scotsmen of Toronto. The sculptors, the McIntosh Granite and Marble Co., Limited, of Toronto, to whom was entrusted this now familiar landmark, have produced here a work of art highly creditable in every way.



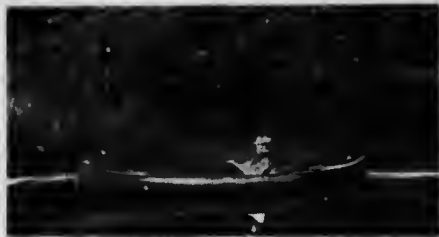
**AUTOMOBILE DRIVE.**—Toronto as viewed from an automobile, and the fascinating pleasure derived in being whirled along at a fast clip over well paved roads, is one of the most



enjoyable of outings. At the large Automobile and Bicycle Garage of Hyslop Bros., 209 Yonge St., an automobile or bicycle can be rented by the hour or day at very moderate

charges. To view the city in this manner affords a feat.

**TORONTO TO LONG BRANCH.**—Having passed through Parkdale we reach the Ocean House, where two car lines, viz., King St. and Queen St., converge. Here one can obtain



liquid refreshments within quiet and pretty surroundings. Close by the Mimico Electric Ry. at Sunnyside, are the

boathouses and works of Devins & Orr, where splendid facilities are provided for boating parties. They manufacture gasoline launches, dinghies, boats and canoes. Further west at the mouth of the Humber River, Mr. Devins has another first-class boathouse. The boating up the Humber is excellent, and the scenery is very beautiful. A trip should certainly be made. At Sunnyside is situated Mrs P. V. Meyer's Ball Room and Banquet Parlors, 1801 Queen St. West. In this large and picturesque building there is nothing lacking in respect of comfort and conveniences. Here are



served Mrs Meyer's fish meals so favorably known. Regular meals, ice cream, fountain drinks and light lunches are also provided. Appointments can be arranged by telephoning to Park 905. On the shore of Lake Ontario, 7 miles west of the Union Station, is Long Branch, a charming resort.

Among its beautiful wooded groves are numerous pretty cottages and pavilions. Pleasantly situated in the park is the Long Branch Hotel, electric lighted, surrounded by wide piazzas, overlooking the lake. Rates per day run



from \$1.50 to \$2.00, lower by the week. There are facilities for boating, fishing and bathing. Park is reached *via* G.T.R. and Electric Railway.

*New G. Co. Lumber. "Wheat" "The Day" & "Humber" -*

### HELP YOURSELF

To and with the Only  
Natural Porous Food  
made from Wheat.

Gavena Galloway, White Water, Wis.,  
writes:—"We use Shredded Whole Wheat  
Biscuit for Breakfast, as dessert for dinner,  
toast for tea, and for chafing dish luncheons  
in the evening and would not be without it."

## Shredded Wheat Biscuit

Can be prepared in over  
250 different ways.

It is a remarkable fact  
that no other food takes  
the place of SHREDDED  
WHEAT. This is true  
because in it the complete  
requirements of the body  
are found—the identical  
food counterparts of the  
human organism—its per-  
fect food affinity.



COOK BOOK artistically illus-  
trated in colors, "THE VITAL  
QUESTION," sent FREE  
upon request. Address

NATURAL FOOD CO., TORONTO,  
ONT.

ESTABLISHED 1852

## Gillett's Goods are the Best !

Imperial Baking Powder  
Gillett's Perfumed Lye  
Magic Baking Soda  
Gillett's Washing Crystal



Gillett's Mammoth Blue  
Magic Baking Powder  
Gillett's Cream Tarter  
Royal Yeast Cakes.

# E. W. GILLETT COMPANY, Limited

TORONTO, ONT.

London, Eng.

Chicago, Ill.

# Lugsdin & Francke

—EXCLUSIVE—  
**FURRIERS**

SPECIAL  
 PRICES  
 TO  
 SUMMER  
 BUYERS  
 ALL KINDS  
 MADE UP.  
 FURS  
 IN  
 STOCK  
 ALL  
 OUR  
 OWN  
 MAKE  
 WE CAN  
 SAVE  
 YOU  
 MONEY  
 TRY US.



SEAL,  
 PERSIAN  
 LAMB  
 AND ALL  
 KINDS OF  
 FUR  
 JACKETS  
 MADE  
 TO  
 YOUR  
 ORDER  
 IN  
 3 DAYS.  
 FURS  
 REPAIRED  
 WHILE YOU  
 WAIT  
 IF YOU  
 WISH IT

**WE ARE FURRIERS AND SELL ONLY FURS**

This will explain how we sell at very  
**MODERATE PRICES**

**Lugsdin & Francke**

**101 Yonge St., TORONTO**

# Niagara River Line.

FOR  
**NIAGARA-ON-THE-LAKE, LEWISTON & QUEENSTON**  
 STEAMERS—CHICORA, CHIPPEWA, CORONA.



**Niagara River Line Steamers and Railway Connections.**  
*DAILY SERVICE (EXCEPT SUNDAYS) UNTIL OCT. 15.*

**At Niagara-on-the-Lake, with Michigan Central R. R.**

	A.M.	O	A.M.	P.M.	P.M.	P.M.
Lv. Toronto .....	7:30		11:00			3:15
" Niagara-on-the-Lake .....	9:10		1:20			7:30
" Niagara Falls, Ont. ....	10:10		1:50			8:00
" Victoria Park .....	10:10		1:50			8:00
Ar. Buffalo .....	11:05		2:45			8:55
		◆		O		
Lv. Buffalo .....		A.M.	A.M.	P.M.	P.M.	
		6:15	11:30	4:15		
" Victoria Park .....		7:35	12:20	5:30		
" Niagara Falls, Ont. ....		7:41	12:25	5:15		
" Niagara-on-the-Lake .....		8:15	1:00	6:20		
Ar. Toronto .....		10:30	3:15	8:30		

**At Lewiston, with New York Central and H.R.R.**

	READ DOWN	A.M.	O	A.M.	P.M.	P.M.	P.M.	P.M.
Lv. Toronto .....	7:30	9:00	A.M.	11:00	2:00	3:15	5:15	
" Niagara-on-the-Lake .....	9:40	11:15	P.M.	1:15	4:15	6:00	7:30	
" Lewiston .....	10:25	11:50	P.M.	1:50	5:15	6:15	8:05	
Ar. Susp. Bridge .....	10:45	12:10	P.M.	2:10	5:35	7:05	8:25	
" Niagara Falls .....	10:50	12:15	P.M.	2:15	5:10	7:10	8:31	
" Buffalo .....	11:10	1:35	P.M.	3:05	6:30	8:15	9:20	
		◆		O		◆		
Lv. Buffalo .....		A.M.	A.M.	A.M.	P.M.	P.M.	P.M.	
		6:30	9:00	11:15	12:20	1:50	6:15	
" Niagara Falls .....		7:25	9:15	12:01	1:03	5:31	6:58	
" Susp. Bridge .....		7:30	9:55	12:10	1:10	5:38	7:05	
" Lewiston .....		7:55	10:30	12:35	2:00	6:00	7:15	
" Niagara-on-the-Lake .....		8:15	11:00	1:00	2:25	6:20	8:10	
Ar. Toronto .....		10:30	1:15	3:15	1:15	8:30	10:30	

O Discontinued after Sept. 10.      ◆ Discontinued after Sept. 21.  
*(Time Table continued on next page.)*

**Rates on Niagara River Line from Toronto.**

Niagara-on-the-Lake, single fare	\$1.00	Return	\$1.50
Lewiston or Queenston, "	1.25	"	2.00
Niagara Falls, "	1.55		
Niagara Falls and return, 2 days	2.00	30 days	2.30
Buffalo, single fare	2.00		
Buffalo and return, 2 days	2.50	30 days	3.20
Niagara-on-the-Lake to Lewiston, or Queenston, single fare, 25c; return, 50c			



THE above illustration represents two well-known public performers dressed in Garments the exact fac-simile of those produced by the firm of WM. E. ORR & Co., Toronto, with such success last season. This firm has gained a splendid reputation for High-Class Work in every class of Fur Garments. Not only do they excel in designing and manufacturing, but in values. They are enabled, on account of their location, to offer decided advantages.

This being the off-season for Furs, American or Canadian visitors can effect a considerable saving by placing their orders now with

**WM. E. ORR & CO.**

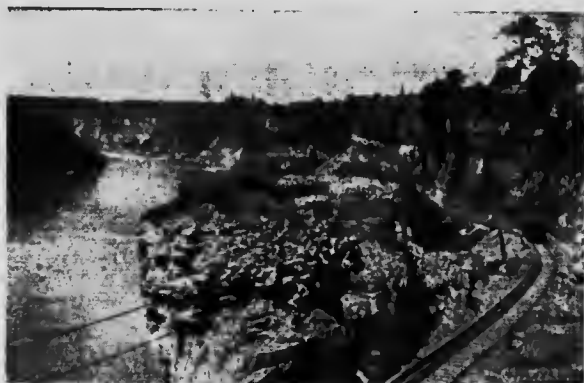
**93 YONGE ST.**

W. E. ORR

EDWIN W. SMITH

# Niagara River Line.

(Time Table Continued.)



## At Lewiston, with Niagara Gorge R.R. (Great Gorge Route).

	A.M.	○	◆	P.M.	○	◆
Lv. Toronto . . . . .	7.30	9.00	11.00	2.00	3.45	P.M. 5.15
" Lewiston . . . . .	10.20	11.55	P.M. 1.50	5.05	6.35	8.05
Ar. Niagara Falls . . . . .	10.55	12.30	2.25	5.10	7.10	8.40
" Buffalo . . . . .	P.M. 12.15	1.45	3.15	7.00	8.30	10.00
Lv. Buffalo . . . . .	◆ A.M. 5.30	A.M. 8.30	○ A.M. 10.30	◆ 12.00	○ 1.00	○ 5.45
" Niagara Falls . . . . .	7.05	9.45	11.15	1.15	6.15	7.00
" Lewiston . . . . .	7.55	10.30	P.M. 12.35	2.00	6.00	7.45
Ar. Toronto . . . . .	10.30	P.M. 1.15	3.15	4.45	8.30	10.30

## At Queenston, with International Ry.

	A.M.	○	◆	P.M.	○	◆
Lv. Toronto . . . . .	7.30	A.M. 9.00	A.M. 11.00	P.M. 2.00	P.M. 3.15	P.M. 5.15
" Queenston . . . . .	10.05	12.05	P.M. 2.00	1.45	6.15	8.15
" Bridge St. . . . .	10.15	12.15	2.40	5.25	7.25	8.50
" Upper Bridge . . . . .	10.55	12.55	2.50	5.35	7.35	9.00
" Niagara Falls, N.Y. . . . .	11.00	1.00	3.00	5.45	7.15	9.15
Ar. Buffalo . . . . .	P.M. 12.15	2.15	1.15	7.00	9.00	10.30
" Table Rock . . . . .	A.M. 11.00	1.00	2.55	5.10	7.10	9.05
" Chippawa . . . . .	11.15	1.15	3.10	5.55	7.55	9.20
Lv. Chippawa . . . . .	◆ 6.30	A.M. 9.00	○ A.M. 11.00	◆ 12.30	○ 1.15	○ 6.15
" Table Rock . . . . .	6.15	9.15	11.15	12.15	1.30	6.30
" Buffalo . . . . .	5.30	8.00	10.00	▲ A.M. 11.30	3.15	5.15
" Niagara Falls, N.Y. . . . .	6.15	9.15	11.15	P.M. 12.15	1.30	6.30
" Upper Bridge . . . . .	6.50	9.20	11.20	12.50	1.35	6.35
" Bridge St. . . . .	7.00	9.30	11.30	1.00	1.15	6.45
" Queenston . . . . .	7.35	10.05	P.M. 12.15	1.10	5.30	7.30
Ar. Toronto . . . . .	10.30	P.M. 1.15	3.15	4.45	8.30	10.30

○ Discontinued after Sept. 10.

◆ Discontinued after Sept. 21.





THE **Bertram Engine  
Works Co., Limited.**

DESIGNERS AND BUILDERS

THE RICHELIEU & ONTARIO NAV. CO.  
STEAMERS

**KINGSTON AND TORONTO**

SPECIAL ATTENTION GIVEN TO  
BUILDING

ENGINES & BOILERS,  
TANKS, SMOKE STACKS, &c.

**REPAIRS and JOBBING**

THE **Bertram Engine  
Works Co., Limited.**

TORONTO.

# Richelieu & Ontario Nav. Co.

Toronto—Montreal Line.

STS. TORONTO and KINGSTON



STEAMER TORONTO.

## SEASON JUNE TO SEPTEMBER

Steamers leave Toronto and Montreal from June 1st to June 15th, inclusive, and from Sept. 19th to Oct. 1st, on Mon., Wed. and Sat. From June 15th to Sept. 17th, daily except Sun.

Eastbound Read Down.	TIME TABLE	Westbound Read Up.
3.00 p.m. Lv.	Toronto	Ar. 6.45 a.m.
9.15 p.m. Ar.	Charlotte	Lv. 11.45 p.m.
11.00 p.m. Lv.	Charlotte	Ar. 10.15 p.m.
6.00 a.m.	Kingston	5.00 p.m.
7.10 a.m.	Clayton	2.55 p.m.
7.25 a.m.	Frontenac	2.45 p.m.
	Thousand Island Park	
8.00 a.m.	Alexandria Bay	2.10 p.m.
9.15 a.m.	Brockville	12.40 p.m.
10.00 a.m. Ar.	Prescott	Lv. 11.50 a.m.
10.15 a.m. Lv.	Prescott	Ar. 7.00 a.m.
1.00 p.m.	Cornwall	11.15 p.m.
1.30 p.m.	Stanley Island	10.00 p.m.
3.10 p.m.	Coteau Landing	8.00 p.m.
6.30 p.m. Ar.	Montreal	Lv. 2.15 p.m.



RICHELIEU AND ONTARIO STEAMER SHOOTING THE RAPIDS

### RATES ON DAILY MAIL LINE

To and from	Single	Return	To and from	Single	Return
Charlotte	\$2.50	\$4.00	Montreal	\$10.00	\$16.70
Kingston	3.25	5.00	Quebec	13.50	20.85
Clayton	3.25	5.00	Saguenay	17.50	27.00
Alexandria Bay	3.25	5.00			

Children between five and 12 years of age, half fare. Stop-overs allowed on application to Purser.

**EAST—Manufacture Establishes the Standard  
of High Grade Trunks, Suit Cases, Bags,  
Satchels, Umbrellas, etc.**

You will find the Store up to date in every particular, having built up our trade to its present large output by fair dealing . . .



**HONEST GOODS AT  
HONEST PRICES.**

Our Stock is complete in every detail.

Solid Cow Hide Suit Cases from \$4.50 to \$15.

Cow Hide 18-Inch Club Bags from \$1.75 to \$12.

Steel Bound Trunks from \$3.75 to \$25.

Gloria Silk Umbrellas from \$1.25 to \$2

Commercial Travelers & Opera Troupe Unbreakable Trunks a Speciality. Should you visit our city don't fail to call on

**EAST & CO., 300 YONGE ST., TORONTO**



**Ladies and  
Gentlemen's  
HAIR  
GOODS**

We are the leading firm in the Dominion of Canada, and nowhere else will you find the Choice variety of High-Grade Hair Goods in

**SWITCHES, BANGS, POMPADOURS  
WIGS & TOUPEES.**

Excellent Hair Dressing Facilities—  
Telephone M. 1551 for appointments.

**THE DORENWEND CO., OF TORONTO,  
103 & 105 YONGE ST. LIMITED**

# Richelieu & Ontario Nav. Co.

**Hamilton, Bay of Quinte and Montreal Line**  
**STEAMERS CORSICAN, HAMILTON AND SPARTAN.**

TRI-WEEKLY SERVICE	O	JUNE 2 TO SEPT.
TUES., THURS. AND SAT.		MON., WED. AND FRI.
Lv. Hamilton..... 1.00 p.m.		1 v. Montreal..... 7.00 p.m.
Toronto..... 7.30 "		Cornwall..... 6.00 a.m.
Darlington (flag).... 10.30 "		Morrisburg..... 10.30 "
Port Hope..... 12.10 a.m.		Iroquois..... 12.00 n'n
Cobourg..... 12.45 "		Prescott..... 2.15 p.m.
Brighton (flag)..... 4.00 "		Brockville..... 3.45 "
Trenton..... 6.00 "		Gananoque..... 6.45 "
Belleville..... 7.30 "		Ar. Kingston..... 8.30 "
Northport (flag).... 8.15 "		Lv. Kingston..... 11.30 "
Deseronto..... 9.15 "		Glenora (flag).... 3.30 a.m.
Picton..... 10.30 "		Picton..... 5.30 "
Glenora (flag)..... 11.00 "		Deseronto..... 7.00 "
Kingston..... 4.30 p.m.		Northport (flag).... 7.30 "
Gananoque..... 6.15 "		Belleville..... 8.45 "
Brockville..... 9.30 "		Trenton..... 10.00 "
Prescott..... 10.30 "		Brighton (flag).... 11.30 "
Iroquois..... 12.00 m't		Cobourg..... 2.00 p.m.
Morrisburg..... 3.30 a.m.		Port Hope..... 3.00 "
Cornwall..... 5.30 "		Darlington (flag).... 4.30 "
Coteau..... 8.00 "		Toronto..... 9.00 "
Ar. Montreal..... 12.00 n'n		Ar. Hamilton..... 2.00 a.m.

### HAMILTON LINE FARES

Hamilton to Montreal..... \$ 8.75	Toronto to Montreal..... \$ 8.00
Hamilton to Montreal and return.... 16.00	Toronto to Montreal and return..... 15.00

Meals and berths included. Return tickets do not include meals and berths while steamers are lying at Montreal or Hamilton.

# Turbine Steamship Co.

**Burlington Beach and Hamilton**



STEAMER TURBINIA.

Leaves Geddes Wharf, Toronto. For Time-table and Fares see daily papers or apply to A. F. Webster, N.E. Corner King and Yonge Sts.

# Lorne Park and Oakville

STEAMER OJIBWAY.

Leave Toronto..... 9.15 a.m. and 2.15 p.m.  
 Arrive Toronto..... 1.45 p.m. and 8.00 p.m.

Calling at Lorne Park only on 8.00 p.m. trip.

Rates: Oakville, one way . . . . . 25c. Return . . . . . 40c.  
 Lorne Park, one way, 25c. Return . . . . . 35c.

Special Rates to Excursion Parties.

For further information apply at Ticket Office, Yonge st. Wharf, or  
 Thomas Marks & Co., 707 Board of Trade Building. Telephone Main 2764.

## PATTERSON'S CANDY

Known Everywhere for its  
**PURITY** and  
**DELICIOUS**  
**FLAVOR**

And is recognized as  
**STANDARD HIGH GRADE.**

Mail Orders from all parts executed  
 promptly.

**Patterson Candy Co.**

2 STORES ICE CREAM & CONFECTIONERY

98 Yonge St. &

218 Queen St. W.



## OSGOODE DAIRY, LIMITED,

82 Power Street,

Wholesale and Retail Dealers in

**MILK, CREAM  
 BUTTER AND EGGS**

A STANDARD QUALITY  
 AND ALWAYS GOOD.

Whipping and Table Cream promptly delivered.

**OSGOODE DAIRY, Limited.** Phone Main 2493



## J. F. MUIR,

71 KING ST. W. (UPSTAIRS) TORONTO



All Kinds of Uniform  
 Caps a Specialty.

Manufacturer of  
**STEAMBOAT  
 RAILWAY  
 YAGHT  
 UNIVERSITY  
 COLLEGE &  
 BAND GAPS  
 POLICE & F.D.  
 GAPS.**

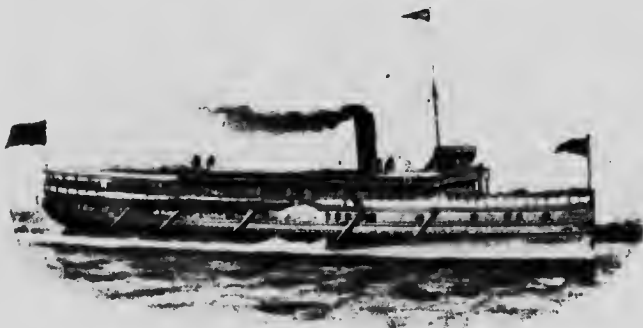
# Niagara St. C. & Toronto Nav. Co.

Steamers—**LAKESIDE & GARDEN CITY.**

FOR

**PORT DALHOUSIE, ST. CATHARINES, MERRITTON,  
THOROLD, NIAGARA FALLS, ONT., NIAGARA  
FALLS, N.Y., AND BUFFALO.**

At Port Dalhousie, Connecting with Niagara, St. Catharines and Toronto  
Railway.



STEAMER GARDEN CITY

**Complete Time Table taking effect June 20th.**

Leaves Toronto... 8.00 a.m., 11.00 a.m., 2.00 p.m., 5.00 p.m.  
 Arrive Port Dalhousie—10.30 a.m., 1.30 p.m., 4.30 p.m., 7.30 p.m.  
 Leave Port Dalhousie—8.00 a.m., 11.00 a.m., 2 p.m., 7.00 p.m.  
 Arrive Toronto—10.30 a.m., 1.30 p.m., 4.30 p.m., 9.30 p.m.

**Railway and Steamboat Connections.**

	A.M.	A.M.	P.M.	P.M.
Lv. Niagara Falls, N.Y.....	6.10	9.10	12.10	5.10
" Niagara Falls, Ont. ....	6.30	9.30	12.30	5.30
" Thorold.....	6.56	9.56	12.56	5.56
" Merriton.....	7.03	10.03	1.03	6.03
" St. Catharines.....	7.20	10.20	1.20	6.20

Railway Connection between Port Dalhousie and St. Catharines every  
half hour.

**Rates.**

Pt. Dalhousie, single, 75c.; Ret., \$1.25	St. Cathar., single, 80c.; Ret., \$1.35
Merriton " 85c.; " 1.45	Thorold " 90c.; " 1.50
Niag. Falls, Ont. " \$1.10; " 1.85	Niag. Falls, n.y., " \$1.30 " 2.05
Buffalo " 1.65; " 2.55	



**TOURISTS AND CAMPERS**

WILL FIND

**COWAN'S**



Perfection COCOA  
 QUEEN'S DESSERT  
 CHOCOLATE  
 CHOCOLATE GINGER  
 CHOCOLATE WAFERS

And  
 COWAN'S  
 SWISS MILK  
 CHOCOLATE

Dainty and  
 Pure.

**LEVY BROS.**

**MERCHANT · TAILORS**

(LATE WITH LD. M. CO.)

**SCOTT & COLBORNE STS.,** OPP. KING EDWARD HOTEL

**TORONTO.**



**E. E. IRISH**

**Ladies' Tailor and Dressmaker.**

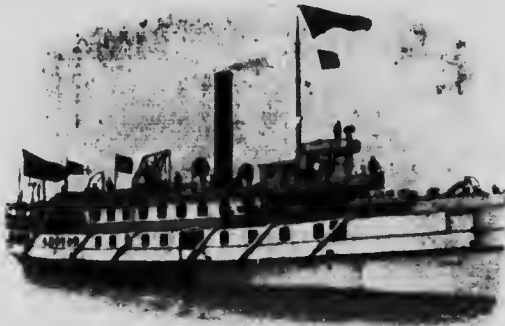
LATEST DESIGNS and adaptations  
 in Plain and Fancy TAILOR-MADE  
 GOWNS and COSTUMES.

**Fit and Finish equal  
 to Best Guaranteed.**

Visitors remaining in Toronto  
 for only a brief period can have  
 work executed in shortest pos-  
 sible time.—Prices very Reasonable.

**624 YONGE ST.,** (Near Cor. St. Joseph St.)

## Lake Ontario Navigation Co.



STEAMER ARGYLE

From June 7 Steamer Argyle will run as follows

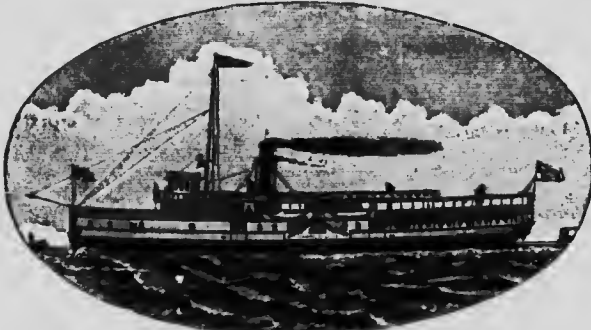
Lv. Newcastle, Tues and Fri. 6.30 a.m. " Bowmanville, " " 7 10 " " Oshawa, " " 8 00 " " Whithy, " " 8 45 " Ar. at Toronto, " " 11 15 " Returning for above ports. Lv. Toronto, " " 5 00 p.m.	Lv. Colborne, Thurs. 6 00 a.m. " Cobourg, " 7 00 " " Port Hope, " 8 00 " Ar. at Toronto, " 12.30 p.m. Returning for above ports. Lv. Toronto, " 5 00 p.m. (From Geddes' Wharf.)
--	---

**Rates Baswards:** Colborne, single, \$1 25; return, \$2 00. Port Hope and Cobourg, single, \$1 00; return, \$1 75. Whithy and Oshawa, single, 60c; return, 85c. Bowmanville, single, 70c; return, \$1 05. Newcastle, single, 75c; return, \$1 10.

Sat. 2 p.m. excursion to Whithy, Oshawa and Bowmanville. Return fare, 50c.

Commencing June 18, Sat night excursions to Charlotte (Port of Rochester) Lv. Toronto 11 p.m. Ar. Charlotte 6 a.m. Lv. Charlotte 8 30 p.m. Ar. at Toronto early Mon. a.m. Fare, round trip, \$2 00.

## South Shore Steamboat Line



STEAMER CITY OF OWEN SOUND

From Yonge Street Wharf, East Side.

Lv. Toronto daily (Sat. excepted), 8.30 a.m.	Ar. Grimshy Park 11.30 a.m.
" Grimshy Park " " 5.00 p.m.	" Toronto " " 8.00 p.m.
" Toronto, Saturday, " 2.00 p.m.	" Grimshy Park 5.00 p.m.
" Grimshy Park, " " 5.30 p.m.	" Toronto, " " 8.30 p.m.
Toronto to Grimshy Park and return same day, 65c.	good for season, \$1.00
" " Jordan Beach " " 75c.	" " " " 1.25
Book Tickets, 20 Trips, \$5.00.	Saturday p.m. trip, return, " " 50c.

*Jordan Beach Division—Special Afternoon Excursions from Grimshy Park to Jordan Beach and return* Adults, 25c. Children, 10c.

Lv. Grimshy Park 1.00 p.m. Ar. Jordan Beach 2.00 p.m.  
 " Jordan Beach 4.00 p.m. " Grimshy Park 5.00 p.m.

Passenger rates via City of Owen Sound include free entrance to Park.  
 Time Table subject to change without notice.





Try us for —————

**GAS AND  
ELECTRIC  
FIXTURES**



**MANUFACTURERS OF THE LATEST  
DESIGNS AND FINISHES IN THESE  
GOODS**

**SPECIAL DESIGNS MADE TO CON-  
FORM WITH INTERIOR DECORA-  
TIONS.**

**The James Morrison  
Brass Mfg. Co., Limited**

**89-97 West Adelaide St. - TORONTO**

**The End of the Journey.**



AT THE END of your trip your Clothes  
will be wrinkled and dirty. Have you made  
any arrangements to have them Pressed or  
Cleaned? If not, phone up and we will send  
for them and put them in good shape.

**FOUNTAIN "MY VALET"**

Cleaner and Presser of Clothes

**90 ADELAIDE ST. W.**

**PHONE MAIN 3074**

# Merchants' Line.

Steamers:--PERSIA & OCEAN.

**Going East.**

LV. GEORGE'S WHARF.

Toronto, Tues. and Sat.	2.30 p.m.
Kingston, Wed. and Sun.	8.00 a.m.
Brockville, " "	1.30 p.m.
Prescott, " "	2.50 " "
Cornwall, " "	8.00 " "
Ar. Montreal, Th & F on	8.00 a.m.

**Rates Eastward**

To June 20th and from Sept. 1st to close of season.

	Sing.	Ret.
Toronto to Kingston.		
Brockville, Prescott.	\$3.50	\$6.00
Toronto to Cornwall.	4.75	8.50
" to Montreal.	6.50	11.00

(MEALS & BERTH INCLUDED)

**Going West.**

LV. JACQUES' WHARF.

Montreal, Tues. and Fri.	8.00 p.m.
Cornwall, Wed. and Sat.	7.30 a.m.
Morrishurg, " "	12.30 p.m.
Prescott, " "	2.00 " "
Brockville, " "	5.30 " "
Kingston, Thurs. & Sun.	7.00 " "
Ar. Toronto, " "	1.30 a.m.
" St. Catharines every Mon.	6.00 p.m.
" Hamilton, Mon. and Fri. a.m.	

**Rates from June 20th to Sept. 1st.**

	Sing.	Ret.
Toronto to Kingston	\$4.00	\$7.50
" Brockville	1.50	8.50
" Prescott	4.50	8.50
" Cornwall	5.50	10.50
" Montreal	7.50	11.00

**Steamers—CUBA & MELBOURNE**

**Leave West Bound.**

Montreal—Wed. 8.00 p.m.; Cornwall—Thurs., 8.00 a.m.; Morrishurg—1.30 p.m.; Iroquois—Thurs., 3.00 p.m.; Prescott—Thurs., 7 p.m.; Brockville—Thurs., 8.30 p.m.; Kingston—Fri., 3.00 p.m.; Toronto (ar.)—Fri., 10.00 p.m. Lv. Toronto—Sat., 8.00 a.m.; Pt. Dalhousie—Sat., 11.00 a.m.; Pt. Colborne—Sat., 12.00 p.m.; Pt. Stanley—Sun., noon; Cleveland (ar.)—Mon., p.m.; Toledo—Tues., p.m.; Windsor—Tues., 8.00 a.m.

**Leave East Bound.**

Toledo—Wed., 1.00 p.m.; Cleveland—Thurs. 2.00 p.m.; Pt. Colborne—Fri., 9.00 a.m.; Toronto—Sat. 1.00 p.m.; Kingston—Sun., 8.00 a.m.; Brockville—Sun., 1.30 p.m.; Prescott—Sun., 3.00 p.m.; Cornwall—Sun., midnight; Montreal (ar.)—Mon. noon.

# Toronto Ferry Co.

FOR

HANLAN'S POINT, ISLAND PARK & WARD'S ISLAND



Steamers—May Flower, Primrose, Shamrock, Thistle, Kathleen, John Hanlan, Clark Bros., Island Queen, Luella, Arlington, Ada Alice.  
 Steamers leave Yonge St. Wharf, W. side, and Brock St. every few minutes from 6 a.m. to 12 p.m. For Ward's Island, from Bay St. Wharf. Season May 15th to Sept. 15th, and intermittingly thereafter until close of navigation. Fare each way 5c. Children half fare.

# Hamilton Steamboat Co.

BURLINGTON BEAUL, HAMILTON. Steamers: MACASSA & MODJESKA.

Lv. Toronto	7.30 a.m.	11.00 a.m.	2.00 p.m.	5.15 p.m.
" Beach	9.55 "	12.05 p.m.	1.25 "	7.40 "
Ar. Hamilton	10.15 "	1.45 "	1.15 "	8.00 "
Lv. Hamilton	7.15 "	10.45 a.m.	2.00 "	5.30 "
" Beach	8.05 "	11.05 "	2.20 "	5.50 "
Ar. Toronto	10.30 "	1.30 p.m.	4.45 "	8.15 "

## Canada's Model Bakery.



The Toronto Home of  
Weston's High-Class  
Bread, Cakes & Biscuits

THE Growth of public opinion in favor of all lines made under the name of "WESTON" has been phenomenal. From a beginning in 1884 of 1 wagon, the trade has grown until to-day 36 wagons are used to deliver the products of the Model Bakery.

### SPINK'S MILLS.

WESTON'S WHOLE  
WHEAT WAFERS  
ARE MADE FROM  
SPECIALLY  
PREPARED FLOUR,  
GROUND AT  
OUR OWN MILLS.  
IT IS A VERY  
CHOICE BISCUIT



The Model Bakery Co.'s Mills at Pickering

WESTON'S BREAD, AS WELL AS ALL LINES OF  
MACAROONS, LADY FINGERS, VANILLA WAFERS, &c.  
SHIPPED TO ALL PARTS OF ONTARIO.

**Model Bakery Co., Limited, Toronto**

## Grand Trunk Railway.

- COBOURG, BELLEVILLE**—Lv. x8.00 a.m., \*9 a.m., x2.00 p.m., x5.10 p.m., x9.00 p.m., \*10.30 p.m. Ar. \*\*6.35 a.m., \*7.15 a.m., x9.45 a.m., x3.20 p.m., \*4.30 p.m., x9.10 p.m.
- KINGSTON, BROCKVILLE**—Lv. x8.00 a.m., \*9.00 a.m., x2.00 p.m., x9.00 p.m., \*10.30 p.m. Ar. \*\*6.35 a.m., \*7.15 a.m., x3.20 p.m., \*4.30 p.m., x9.10 p.m.
- MONTREAL**—Lv. x8.00 a.m., \*9 a.m., x9.00 p.m., \*10.30 p.m. Ar. \*\*6.35 a.m., \*7.15 a.m., \*4.30 p.m., x9.10 p.m.
- PORTLAND (Me.), BOSTON**—Lv. \*9.00 a.m., 010.30 p.m. Ar. \*7.15 a.m., \*4.30 p.m.
- JACKSON'S POINT**—Lv. 01.45 p.m., x5.00 p.m. Ar. a10.20 a.m., x10.00 a.m.
- PETERBORO'**—Lv. x7.50 a.m., x2.00 p.m., x5.00 p.m., x7.20 p.m. Ar. x10.10 a.m., x11.55 a.m., x3.20 p.m., x9.05 p.m.
- HAMILTON**—Lv. x6.45 a.m., \*8.00 a.m., \*9.00 a.m., \*11.00 a.m., \*2.10 p.m., \*4.10 p.m., \*4.40 p.m., x5.30 p.m., \*6.00 p.m., x7.25 p.m., \*11.20 p.m. Ar. x8.25 a.m., x8.50 a.m., \*9.40 a.m., \*11.10 a.m., x12.30 p.m., \*1.35 p.m., \*4.35 x6.40 p.m., \*8.15 p.m., \*9.30 p.m., \*10.05 p.m.
- NIAGARA FALLS, BUFFALO**—Lv. x6.45 a.m., \*9.00 a.m., \*11.00 a.m., \*4.10 p.m., \*6 p.m., \*11.20 p.m. Ar. x8.25 a.m., x8.50, \*9.40 a.m., \*11.10 a.m., \*1.35 p.m., \*4.25 p.m., \*8.15 p.m., \*10.05 p.m.
- NEW YORK**—Lv. \*9.00 a.m., \*11.00 a.m., \*4.10 p.m., \*6.00 p.m., \*11.20 p.m. Ar. \*9.40 a.m., \*4.35 p.m., \*10.05 p.m.
- BRANTFORD**—Lv. x6.45 a.m., x8.00 a.m., \*2.10 p.m., x5.30 p.m., x6.00 p.m., x7.25 p.m. Ar. x8.50 a.m., x9.40 a.m., x12.30 p.m., x1.35 p.m., x6.40 p.m., \*8.15 p.m., x9.30 p.m.
- WOODSTOCK, LONDON**—Lv. x6.45 a.m., \*8.00 a.m., \*2.10 p.m., \*4.40 p.m., x5.30 p.m., x6.00 p.m., x7.25 p.m., 11.20 p.m. Ar. x8.25 a.m., x8.50 a.m., x12.30 p.m., \*1.35 p.m., x6.40 p.m., \*8.15 p.m., \*9.30 p.m.
- DETROIT, PORT HURON & CHICAGO (via London)**—Lv. \*8.00 a.m., \*2.10 p.m., \*4.40 p.m., \*11.20 p.m. Ar. x8.25 a.m., \*1.35 p.m., \*8.15 p.m., \*9.30 p.m.
- GUELPH, STRATFORD, LONDON & SARNIA TUNNEL**—Lv. x7.35 a.m., \*8.30 a.m., x1.00 p.m., x4.00 p.m., x7.00 p.m. Ar. \*7.40 a.m., x10.00 a.m., x12.10 p.m., \*7.40 p.m., x9.50 p.m.
- PORT HURON, CHICAGO (Main Line)**—Lv. \*7.35 a.m., \*8.30 a.m., x1.00 p.m. Ar. \*7.40 a.m., \*7.40 p.m.
- CLINTON, GODERICH**—Lv. x8.30 a.m., x1.00 p.m., x7.00 p.m. Ar. x12.10 p.m., x7.40 p.m., x9.50 p.m.
- GALT, FERGUS, OWEN SOUND**—Lv. x8.30 a.m., x1.00 p.m., x4.00 p.m. Ar. x12.10 p.m., x7.40 p.m.
- COLLINGWOOD**—Lv. x8.45 a.m., x1.45 p.m., x5.20 p.m. Ar. x10.15 a.m., x2.50 p.m., x8.00 p.m.
- ORILLIA, GRAVENHURST**—Lv. x8.45 a.m., x10.45 a.m., \*1.45 p.m., x5.20 p.m., \*12.01 a.m. Ar. \*7.00 a.m., x10.15 a.m. (from Orillia), \*2.50 p.m., x3.55 p.m., x8 p.m.
- MUSKOKA WHARF**—Lv. x8.45 a.m., x10.45 a.m., \*12.01 a.m. Ar. \*7.00 a.m., x3.55 p.m.
- PENETANG**—Lv. x8.45 a.m., x11.30 a.m., x5.20 p.m. Ar. x10.15 a.m., x8.00 p.m.
- HUNTSVILLE**—Lv. x8.45 a.m., x11.30 a.m., \*1.45 p.m., \*12.01 a.m. Ar. \*7.00 a.m., \*2.50 p.m.
- NORTH BAY & BURK'S FALLS**—Lv. x8.45 a.m., \*1.45 p.m., \*12.01 a.m. Ar. \*7.00 a.m., \*2.50 p.m., x8.00 p.m.

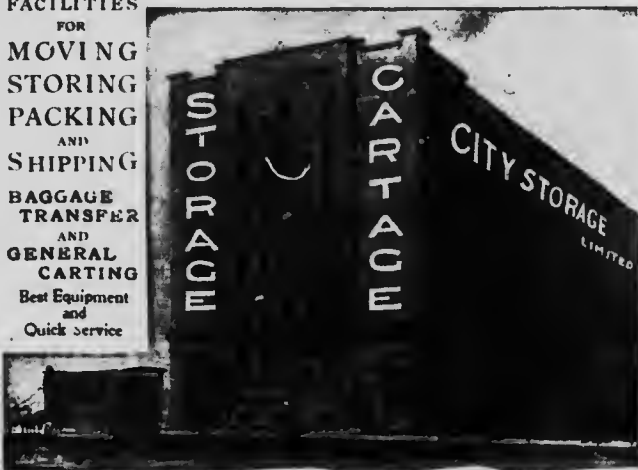
Daily. xDaily except Sunday. \*\*Daily except Monday. oDaily except Saturday. aMonday and Thursday. bWednesday and Saturday.

## CITY STORAGE, LIMITED

251-253 COLLEGE ST. PHONE M. 3568

### NEW COMPARTMENT WAREHOUSE

FIRST CLASS  
FACILITIES  
FOR  
MOVING  
STORING  
PACKING  
AND  
SHIPPING  
BAGGAGE  
TRANSFER  
AND  
GENERAL  
CARTING  
Best Equipment  
and  
Quick Service



The Monarch of Natural Table Waters.

ASK FOR

# Sanitaris

Pure, Pleasant, Piquant and Palatable. For Purity,  
Elegance and Excellence it Excels.

**SANITARIS** is a natural mineral water, and goes to the consumer precisely as it comes from the Spring, only being filtered and aerated in the process of bottling. As a table water **SANITARIS** cannot be excelled. Unlike most mineral waters (many of which are artificial) **SANITARIS** will blend nicely with the most delicate wines and liquors, imparting a zest and piquancy which makes it a favorite in hotels, clubs and private families. If your Grocer, Druggist or Hotel Keeper does not keep it, write to the **DIAMOND PARK MINERAL WATER COMPANY**, Arnprior, Ont.

Toronto Depot—198 SEATON ST.

PHONE MAIN 3380

# Canadian Pacific Railway

(Condensed Time Table)

OTTAWA, MONTREAL, QUEBEC—Lv. x9.15 a.m.,  
\*10.00 p.m. Ar. \*7.25 a.m., x7.30 p.m.

ST JOHN, HALIFAX—Lv. x9.15 a.m. Ar. x7.30 p.m.

WINNIPEG AND PACIFIC COAST (via North Bay)—Lv.  
\*1.45 p.m., \*12.01 a.m. Ar. \*2.50 p.m., \*7.10 a.m.

ST. PAUL, MINNEAPOLIS, DULUTH (via North Bay)—  
Lv. \*12.01 a.m. Ar. \*7.00 a.m.

GUELPH—Lv. x7.55 a.m., x4.15 p.m., x6.20 p.m. Ar.  
x10.35 a.m., x12.15 p.m., x9.10 p.m.

WOODSTOCK, ST. THOMAS, LONDON, CHATHAM,  
DETROIT, ETC.—Lv. \*7.55 a.m., x4.15 p.m., e\*7.55  
p.m. Ar. \*8.30 a.m., x12.15 p.m., \*9.10 p.m.

DETROIT, ST. LOUIS—Lv. \*7.55 a.m., x4.15 p.m.,  
\*7.55 p.m. Ar. \*8.30 a.m., \*12.15 p.m., \*9.10 p.m.

DETROIT, CHICAGO AND WESTERN STATES—Lv.  
Lv. \*7.55 a.m., \*7.55 p.m. Ar. \*8.30 a.m., \*9.10 p.m.

HAMILTON—Lv. x7.50 a.m., \*9.45 a.m., x1.15 p.m., x3.00  
p.m., \*5.20 p.m., x7.35 p.m. Ar. x8.55 a.m., \*10.50 a.m.,  
x1.20 p.m., x4.05 p.m., x6.10 p.m., 9.05 p.m.

BRANTFORD—Lv. x7.50 a.m., x9.45 a.m., x1.15 p.m., \*5.20  
p.m., x7.35 p.m. Ar. \*10.50 a.m., x4.05 p.m., x6.10 p.m.,  
x9.05 p.m.

BUFFALO—Lv. x7.50 a.m., \*9.45 a.m., \*5.20 p.m. Ar.  
\*10.50 a.m., x4.05 p.m., \*9.05 p.m.

NEW YORK—Lv. x7.50 a.m., x9.45 a.m., \*5.20 p.m. Ar.  
\*10.50 a.m., x4.05 p.m., \*9.05 p.m.

PETERBORO, TWEED—Lv. x9.15 a.m., x5.00 p.m.,  
\*10.00 p.m. Ar. \*7.25 a.m., x9.5 a.m., x7.30 p.m.

WINGHAM, TEESWATER—Lv. x7.35 a.m., x5.15 p.m. Ar.  
x11.20 a.m., x8.50 p.m.

OWEN SOUND—Lv. x8.25 a.m., a1.30 p.m., x5.40 p.m.  
Ar. x11.30 a.m., b12.45 p.m., x8.40 p.m.

FERGUS, ELORA—Lv. x7.35 a.m., x5.15 p.m. Ar. x11.40  
a.m., x8.50 p.m.

\* Daily. x Week days. e No connection for St Thomas.  
a Tuesday, Thursday, Saturday. b Sunday, Tuesday,  
Thursday. Effective Monday, June 13th, 1904.  
City Ticket Office, 1 King street east.

## GENERAL INFORMATION.

**Baggage Transfer**—City Storage, Limited, 251 College Street,  
Main 3568

**Bicycle Livery**—Hyslop Bros., 209 Yonge St

**Cab and Tally-Ho Coaches**—G. W. Verral, 61 York Street,  
Main 123

**Exchange Broker**—A. F. Webster, Cor. King and Yonge Sts.

**Express Companies**—Can. Express Co., 55-7 Yonge Street;  
Dominion Express Co., 48 Yonge St.

**Money**—United States Currency passes at par in Canada.

**Messenger Service**—Holmes Elec. Pro. Co., 10 Melinda St.

**Telegraph Companies**—Can. Pacific Tel. Co., cor. Front and  
Yonge Sts.; Great North Western Tel. Co., 17 Wellington  
Street E.

**Postage Rates**—Letters: Canada and United States, 2 cents  
per oz.; Newspapers: Canada and United States,  
1 cent per 4 oz.

# Independent Order of Foresters

## Record for 1903.

Paid to Widows and Orphans and Disabled Members	-	-	\$1,658,108.92
Paid Sick and Funeral Benefits	-		\$192,163.71
Increase in Membership	-		14,123
Membership, December 31st, 1903	-		219,492
Increase in accumulated funds dur- ing the year	-		\$1,234,236.97
Total accumulated fund, Dec. 31, '03			\$7,453,308.14
Total Benefits paid to Dec. 31, '03	-		\$16,290,991.78
Total accumulated funds, Feb. 1, '04			\$7,518,852.09

DR. ORONHYETEKHA, Supreme Chief Ranger  
JOHN A. MCGILLIVRAY, - Supreme Secretary

Head Office - - - Temple Building  
TORONTO

## PULLAN'S & NEVEREN

### LADIES' TAILORS & DRESSMAKERS

Plain and Fancy Tailor Made  
Gowns, Reception, Street  
and Carriage Dresses.

Costumes and Skirts for all  
occasions - High Class only.

PRICES MODERATE.

335 Yonge St. & 385 Yonge St.

Cor. Gould St.

MAIN 4003.

Cor. Gerrard St.

OFFICE  
SUPPLIES

PENS, PENCILS, STATIONERY, & C  
General Agent for  
C HOWARD HUNT PEN COY | Round Pointed PENS  
JOHN B. YOUNG, 19 Richmond St. W.  
TORONTO.

BRYAN PUBLISHING CO.

Publishers of

RAILWAY AND STEAMBOAT FOLDERS

13 Temperance Street

TORONTO

# Toronto Street Railway

## ROUTE OF ALL LINES.

Lines are alphabetically arranged.

Transfers are given on all lines, night or day, to all parts of the city.

**AVENUE RD.**—Two white lights. To UPPER CANADA COLLEGE. Route—C.P.R. tracks via Avenue Rd., Yonge, Front St. to Union Station; return same way.

**ARTHUR ST.**—Two red lights. Route—Via Arthur to Bathurst, to King, and return same way.

**BATHURST ST.**—Red and white lights. Connect with Electric Rd. for TORONTO JUNCTION, DAVENPORT.

**BELT LINE.**—One red light. Makes circuit of business and residential sections; passing Allan Gardens, connects with all lines to parks and public buildings. Route—Going west, King to Spadina, to Bloor, to Sherbourne, to King. Going east, King to Sherbourne, to Bloor, to Spadina, to King.

**BLOOR AND McCAUL.**—One white light. To UNIVERSITY, QUEEN'S PARK, GRACE HOSPITAL and KNOX COLLEGE. Route—From Front to Yonge, via Yonge to Queen, to McCaul, to College, to Spadina, to Bloor, to the C.P.R. tracks.

**BROADVIEW AVE.**—Red and green lights. To TODMORDEN, DUTCH FARM and DON VALLEY. Route—Via Yonge, Front, York and Queen, to Broadview, to city limits.

**CARLTON AND COLLEGE ST.**—One yellow light. Crosstown to HIGH PARK, QUEEN'S PARK, UNIVERSITY, PARLIAMENT BUILDINGS, ALLAN GARDENS, HOSPITAL and RIVERDALE PARK. Route—From cor. Broadview and Gerrard, via Gerrard to Parliament, to Carlton, to Yonge, to College, west to High Park.

**TO CARLTON AND WESTON.**—Route—Via York, Front, George, King and Bathurst to C.P.R. tracks; return same way.

**CHURCH ST.**—Two red lights. ROSEDALE AVENUE and DRIVES, ATHLETIC GROUNDS. Route—From Union Station, via York to Front, to Church, to Bloor, to Sherbourne, to Rosedale.

**COLLEGE AND YONGE ST.**—Blue and yellow lights. QUEEN'S PARK, PARLIAMENT BUILDINGS, UNIVERSITY, GRACE HOSPITAL, KNOX COLLEGE, HIGH PARK. Route—From Front to Church, via Church to King, to Yonge, to College to High Park.

**DOVERCOURT RD.**—Two white lights. DOVE COURT VILLAGE. Route—King and Shaw to Queen, to Dundas, to Ossington Ave., to College, to Dovercourt Rd., to city limits; return same way.

**DUNDAS ST.**—Two green lights. TORONTO JUNCTION, KENNEDY PARK, CARLTON, WESTON, LAMBTON MILLS. Route—From George and Front, via Front, Church and Queen, to Dundas, to Toronto Junction.

**KING ST., MONRO PARK.**—Two white lights. EXHIBITION, HIGH PARK, WOODBINE RACE TRACK, MONRO PARK, VICTORIA PARK. Route—From King and Runnesvalles Ave., via King to Queen, to Parks.

**KING ST., WOODBINE.**—One white light. Connects with Mimico Electric Railway in the west, and Scarboro' Electric Railway in the east.

**PARLIAMENT ST.**—White and green lights. GENERAL HOSPITAL and EAST TORONTO. Route—From Front and York, via York to King, to Sherbourne, to Queen, to Parliament, to Gerrard, to city limits.

**QUEEN ST. WEST.**—One green light. TRINITY COLLEGE, ASYLUM, PARKDALE, HIGH PARK, connecting with Mimico Electric Railway. Route—From Church and Front, via Church to Queen, to High Park.

**WINCHESTER ST.**—Blue and red lights. RIVERDALE PARK, NECROPOLIS, ST. JAMES' CEMETERY. Route—From Front and York, via York, to King, to Yonge, to Carlton, to Parliament, to Winchester to Sumach.

**YONGE ST.**—One blue light, connecting with Metropolitan Railway. Route—From Union Station, via York to Front, to Yonge, to C.P.R. tracks.



## The Finest Canadian Store

VISITORS to Toronto are invariably surprised at the degree to which the modern Department Store idea has been developed in Canada. As an example of up-to-date store architecture the fine large building of THE ROBERT SIMPSON COMPANY stands supreme.



THE ROBERT SIMPSON COMPANY LIMITED

It is the handsomest and most modernly constructed building for retailing purposes to be found in Canada, and from its situation at the corner of Queen and Yonge Streets it forms one of the most familiar landmarks of the city.

Visitors will find it at once the most pleasant, airy and comfortable place to do their shopping, while our prices will in most cases certainly surprise those who are accustomed to prices across the line.

You have not seen Toronto until you have been through "SIMPSON'S," and you are cordially invited to come.

Restaurant—5th Floor. Ladies' Waiting Room, Writing Desk, Lavatories—1st Floor, Richmond St. Wing. Parcel Check Office—Basement (Free)

THE **SIMPSON** COMPANY  
ROBERT **SIMPSON** LIMITED

H. H. Fudger, President.

J. Wood, Manager

## Suburban Electric Railways

VIA YONGE ST. LINE,

connecting with

### METROPOLITAN RAILWAY

En route to Mt. Pleasant Cemetery, Davisville, Eglinton, Glen Grove Park, York Mills, Thornhill, Richmond Hill, Bond Lake, Aurora, Newmarket, and intermediate points.

Cars Lv. C.P.R. Crossing, N. Toronto, 6.00, 7.20, 9.40, 11.30 a.m., 1.30, 2.40, 3.45, 5.40, 8.00 p.m. (For Glen Grove and intermediate points cars leave every 15 mins.) Cars Ar. C.P.R. Crossing, 7.45, 9.00, 10.45 a.m., 12.45, 3.30, 4.45, 5.45, 7.45, 9.00 p.m. Time Table subject to change without notice

---

VIA KING OR QUEEN ST. LINES

connecting with

### TORONTO AND MIMICO RAILWAY

En route to High Park, Humber, Mimico, New Toronto, Long Branch.

Leaves Sunnyside 6 a.m., and every 30 minutes until 11.30 p.m., last car. Leaves Long Branch at 6.00 a.m., and every 30 minutes until 12.00 midnight

SUNDAY SERVICE—Leaves Sunnyside at 9.30 a.m. and every 30 minutes until 10 p.m. Leaves Long Branch at 10 a.m., and every 30 minutes until 10.30 p.m.

---

VIA KING ST. E. LINE,

connecting with

### TORONTO AND SCARBORO' RAILWAY

En route to Scarboro' Bluffs, Halfway House, East Toronto.

KINGSTON ROAD ROUTE—Leaves Queen and Kingston Road at 5.30 a.m., and every 30 minutes until 12.00 midnight. Leaves Hunt Club 6.15 a.m. and every 30 minutes until 12.15 a.m. Leaves Halfway at 6.00 a.m., and every 30 minutes until 11.30 p.m.

EAST TORONTO ROUTE.—Leaves Queen and Kingston Road at 5.45 a.m., and every 30 minutes until 11.45 p.m. Leaves Gerrard and Main at 6.00 a.m., and every 30 minutes until 11.30 p.m.

SUNDAY SERVICE.—Leaves Queen and Kingston Road at 9.00 a.m., and every 30 minutes until 11.30 p.m., last car. Leaves Halfway House at 9.30 a.m., and every 30 minutes until 10.30 p.m., last car

---

VIA DUNDAS ST. OR BATHURST ST.

connecting with

### TORONTO SUBURBAN RAILWAY

Cars leave cor. Keele and Dundas Sts., Toronto Junction, for Weston, on the hour and half hour.

Leave Weston on same time.

For Lambton Mills, Lambton Park and Golf Club on the quarter to and quarter after the hour. Cars leave Lambton for Toronto Junction on the hour and half hour.

Cars run between Toronto Junction and Bathurst St. every hour, connecting with the cars for Weston, Lambton Mills and Lambton Park.

## CHINA PAINTING AND DECORATING

### Firing & Gilding

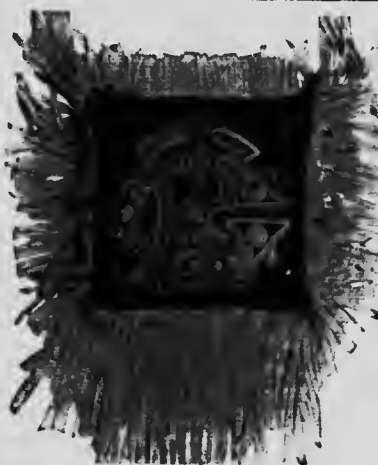
SOLE CANADIAN AGENT  
AND  
DIRECT IMPORTER OF

Theodore Haviland,  
White China  
AND  
Cooley's Gold and  
Mineral Transfers

VALUABLE OLD CHINA MENDED AND  
REDECORATED  
WONDER CEMENT SUPPLIED



**Mrs. John B. Young, 49 Richmond St. W., Toronto.**



### THE MONOGRAM BURNT CUSHION

The Latest and Best  
thing as a Canadian  
Souvenir to take home

Burnt Wood and  
Leather Novelties  
Pyrography  
Supplies  
Prepared Skins  
Blank Woods  
Souvenirs

ORIGINAL DESIGNS FURNISHED

**MASSON & MCGREGOR**

EXCLUSIVE MANUFACTURERS  
24 Yonge Street Arcade-  
TORONTO

**500** Neatly  
Printed

Business Cards  
Bill Heads  
Note Heads  
Envelopes or  
Shipping Tags

**\$1.00.**

*Cap 16*  
**Barnard**  
PRINTER

77 QUEEN ST EAST  
TORONTO, ONT.

**WHIRLWIND** CARPETS TAKEN  
**CARPET CLEANER** UP, CLEANED &  
RELAID.

R. P. POWELL, Prop.  
Cor. BLOOR & MANNING AVE.

TEL.  
PARK 530

# Rossin House Drug Store

PHONE MAIN 2842

Theatrical Supplies	Patent Medicine
Toilet Articles	Sponges
Perfumes	Soaps
Rubber Goods	Brushes, &c.

## JAS. E. BRIGHT

DISPENSING CHEMIST

135 King Street W., - Toronto

# The D. PIKE CO., Limited

MANUFACTURERS OF

## TENTS

Awnings,  
Flags & Balls,  
Waterproof  
Horse and  
Wagon  
Covers,

Life  
Preservers  
Etc.

Also dealers in  
Fishing Tackle &  
Sporting Goods

TELEPHONE  
MAIN 1291



123 KING STREET E., TORONTO, Ont.

# BOGART STUDIO

748 YONGE ST.

(NEAR BLOOR ST.)

TORONTO

x

FOR UP-TO-DATE

## PHOTOS

SPECIALTY MADE OF FLASH LIGHTS AND OF  
FAMILY GROUPS, DINNERS, ETC

Portraits of Building Illustrations shown in this Publication  
were made by us \_\_\_\_\_

PHONE NORTH 75

## A. CLUBB & SONS

*Wholesale and Retail Dealers in*

HAVANA CIGARS, ENGLISH TOBACCOS,  
PIPES,  
CIGARETTES AND SMOKERS' SUNDRIES.

We handle almost every known brand of  
**SMOKERS' GOODS,**

*Including*

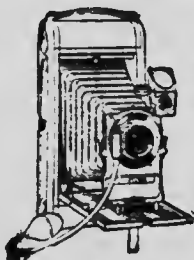
CLUBB'S CELEBRATED SMOKING MIXTURES.

ONLY ADDRESS

**49 KING ST. W. (EAST OF BAY) TORONTO**

*Established 1878.*

### Kodak Developing and Printing



EYE  
GLASSES  
Repaired  
by Mail.  
FIELD  
GLASSES  
AND  
Fountain  
Pens.

**EDWARD C. BULL**

King Edward Hotel, Toronto.

### HOBBERLIN BROS. & CO.

Cash Tailors  
and  
Furriers,

153 YONGE ST.

AND

9 RICHMOND ST. E.  
TORONTO.

## TUCKETT'S MARGUERITE CIGARS

SALES EXCEED

"A MILLION A MONTH."

**BEST QUALITY COAL and WOOD**

**OFFICES:**



**LOWEST PRICES**

- 3 King Street E.
- 415 Yonge St.
- 783 Yonge St.
- 301 Queen St. E.
- 570 Queen St. W.
- 1232 Queen St. W.
- 415 Spadina Ave.
- 204 Wellesley St.
- Bathurst St., opp. Front St.
- Esplanade E., near Berkeley St.
- Esplanade E., foot of Church St.
- Pape Ave., at G.T.R. Crossing
- Yonge St., at C.P.R. Crossing
- Lansdowne Ave., near Dundas St.
- Cor. College St. & Dovercourt Rd.
- Cor. Bloor & Dufferin Sts.

**THE ELIAS ROGERS CO., Limited**

**RAILS and LOCOMOTIVES**

... FOR ...

RAILWAYS, TRAMWAYS,  
LOGGING LINES, ETC.

**JOHN J. GARTSHORE,**

83 FRONT STREET W. (Opp. Queen's Hotel) - TORONTO  
PHONE MAIN 3312.

**THE G. W. TOWNSEND  
LAUNDRY CO.**

REAL PARCEL WILL  
SERVE FOR A REGULAR  
CUSTOMER.



AGENTS WANTED IN  
EVERY TOWN IN  
ONTARIO.

Telephone Main 754

Write for terms.

WAGONS GO EVERYWHERE

TO ADELAIDE ST. W. G. W. Townsend, Mgr.

**WEBB'S RESTAURANT, TORONTO**, is the headquarters for tourists and visitors, situated in the heart of the city near the corner of King and Yonge sts. It is one of the largest and most complete restaurants in Canada. The interior is particularly well furnished, and among other conveniences contains a ladies' dining room, access to which is made by elevator, with comfortable waiting and retiring rooms adjoining. For the convenience of their patrons parcels are checked free.



**WEBB'S RESTAURANT, 56-58 Yonge St.**

## **Jos. E. Seagram**

**WATERLOO, ONT.,**

**DISTILLER OF FINE WHISKIES.**

—BRANDS—

**"83"**

**"Old Times"**

**"White Wheat"**

**TORONTO OFFICE:**

**30 WELLINGTON ST. EAST.**

**G. T. MEAD, Agent.**

HEADQUARTERS  
FOR  
**SPORTING GOODS**

Out Door  
Supplies  
Baseball  
Goods  
Lacrosse  
Sticks  
Golf  
Clubs  
Cricket  
Bats  
Lawn  
Bowls  
Tennis  
Racquets  
Quoits  
etc



We carry a  
complete  
stock of—  
Fishing  
Supplies  
Bait Pails  
Steel  
Rods  
Reels  
Landing  
Nets  
Trolling  
Baits  
Fish  
Baskets  
Dis-  
gorgers,  
etc.

TABLE AND POCKET CUTLERY

**Rice Lewis & Son**

LIMITED

Cor. King and Victoria Sts., - TORONTO

**Anti-Trust Union Made  
TOBACCOS**

**Chewing**

BRITISH NAVY  
KINGS NAVY  
BEAVER

**Smoking**

TONKA AND  
SOLID  
COMFORT

APRICOT  
FINE CUT

**M<sup>C</sup>ALPIN CONSUMERS TOBACCO  
COMPANY, LIMITED**

**TORONTO**



Season,

BRYAN'S

1904

# STEAMBOAT AND RAILWAY



# TIME TABLES

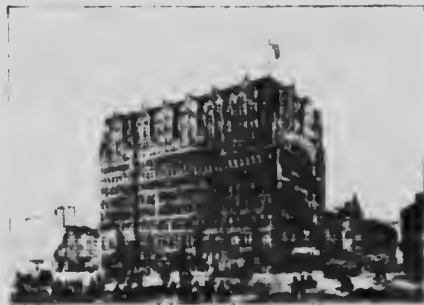
TO  
AND  
FROM

# TORONTO

TO  
AND  
FROM

AND

# SUMMER RESORT GUIDE



THE TRIMMERS, AT BUFFALO



