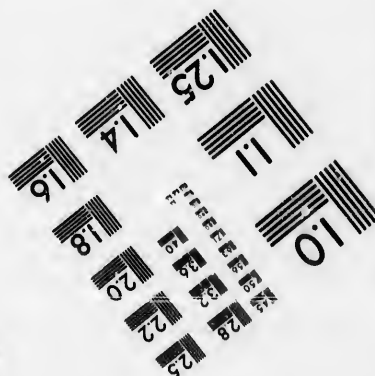
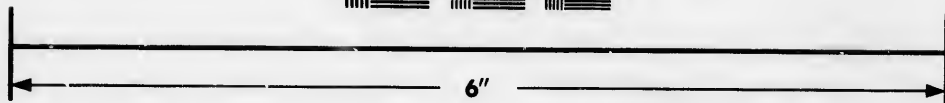
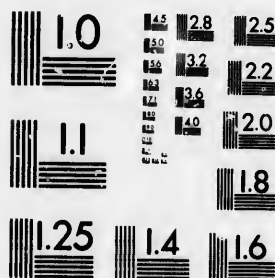


**IMAGE EVALUATION  
TEST TARGET (MT-3)**



**Photographic  
Sciences  
Corporation**

23 WEST MAIN STREET  
WEBSTER, N.Y. 14580  
(716) 872-4503

**CIHM/ICMH  
Microfiche  
Series.**

**CIHM/ICMH  
Collection de  
microfiches.**



**Canadian Institute for Historical Microreproductions / Institut canadien de microreproductions historiques**

**© 1986**

Technical and Bibliographic Notes/Notes techniques et bibliographiques

The Institute has attempted to obtain the best original copy available for filming. Features of this copy which may be bibliographically unique, which may alter any of the images in the reproduction, or which may significantly change the usual method of filming, are checked below.

L'Institut a microfilmé le meilleur exemplaire qu'il lui a été possible de se procurer. Les détails de cet exemplaire qui sont peut-être uniques du point de vue bibliographique, qui peuvent modifier une image reproduite, ou qui peuvent exiger une modification dans la méthode normale de filmage sont indiqués ci-dessous.

- |  |  |
|--|--|
| <input type="checkbox"/> Coloured covers/<br>Couverture de couleur   | <input type="checkbox"/> Coloured pages/<br>Pages de couleur   |
| <input type="checkbox"/> Covers damaged/<br>Couverture endommagée  | <input type="checkbox"/> Pages damaged/<br>Pages endommagées   |
| <input type="checkbox"/> Covers restored and/or laminated/<br>Couverture restaurée et/ou pelliculée  | <input type="checkbox"/> Pages restored and/or laminated/<br>Pages restaurées et/ou pelliculées  |
| <input type="checkbox"/> Cover title missing/<br>Le titre de couverture manque   | <input checked="" type="checkbox"/> Pages discoloured, stained or foxed/<br>Pages décolorées, tachetées ou piquées   |
| <input type="checkbox"/> Coloured maps/<br>Cartes géographiques en couleur   | <input type="checkbox"/> Pages detached/<br>Pages détachées  |
| <input type="checkbox"/> Coloured ink (i.e. other than blue or black)/<br>Encre de couleur (i.e. autre que bleue ou noire)   | <input checked="" type="checkbox"/> Showthrough/<br>Transparence   |
| <input type="checkbox"/> Coloured plates and/or illustrations/<br>Planches et/ou illustrations en couleur  | <input type="checkbox"/> Quality of print varies/<br>Qualité inégale de l'impression   |
| <input type="checkbox"/> Bound with other material/<br>Relié avec d'autres documents   | <input type="checkbox"/> Includes supplementary material/<br>Comprend du matériel supplémentaire   |
| <input type="checkbox"/> Tight binding may cause shadows or distortion<br>along interior margin/<br>La reliure serrée peut causer de l'ombre ou de la<br>distorsion le long de la marge intérieure   | <input type="checkbox"/> Only edition available/<br>Seule édition disponible   |
| <input type="checkbox"/> Blank leaves added during restoration may<br>appear within the text. Whenever possible, these<br>have been omitted from filming/<br>Il se peut que certaines pages blanches ajoutées<br>lors d'une restauration apparaissent dans le texte,<br>mais, lorsque cela était possible, ces pages n'ont<br>pas été filmées. | <input type="checkbox"/> Pages wholly or partially obscured by errata<br>slips, tissues, etc., have been refilmed to<br>ensure the best possible image/<br>Les pages totalement ou partiellement<br>obscurcies par un feuillet d'errata, une pelure,<br>etc., ont été filmées à nouveau de façon à<br>obtenir la meilleure image possible. |
| <input type="checkbox"/> Additional comments:<br>Commentaires supplémentaires:   |  |

This item is filmed at the reduction ratio checked below/  
Ce document est filmé au taux de réduction indiqué ci-dessous.

10X	14X	18X	22X	26X	30X
<input type="checkbox"/>	<input type="checkbox"/>	<input type="checkbox"/>	<input checked="" type="checkbox"/>	<input type="checkbox"/>	<input type="checkbox"/>
12X	16X	20X	24X	28X	32X

The copy filmed here has been reproduced thanks to the generosity of:

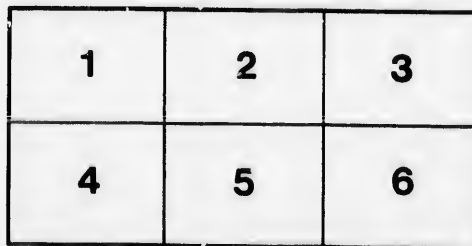
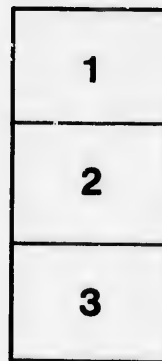
Scott Library,  
York University  
Toronto

The images appearing here are the best quality possible considering the condition and legibility of the original copy and in keeping with the filming contract specifications.

Original copies in printed paper covers are filmed beginning with the front cover and ending on the last page with a printed or illustrated impression, or the back cover when appropriate. All other original copies are filmed beginning on the first page with a printed or illustrated impression, and ending on the last page with a printed or illustrated impression.

The last recorded frame on each microfiche shall contain the symbol  $\rightarrow$  (meaning "CONTINUED"), or the symbol  $\nabla$  (meaning "END"), whichever applies.

Maps, plates, charts, etc., may be filmed at different reduction ratios. Those too large to be entirely included in one exposure are filmed beginning in the upper left hand corner, left to right and top to bottom, as many frames as required. The following diagrams illustrate the method:



L'exemplaire filmé fut reproduit grâce à la générosité de:

Scott Library,  
York University  
Toronto

Les images suivantes ont été reproduites avec le plus grand soin, compte tenu de la condition et de la netteté de l'exemplaire filmé, et en conformité avec les conditions du contrat de filmage.

Les exemplaires originaux dont la couverture en papier est imprimée sont filmés en commençant par le premier plat et en terminant soit par la dernière page qui comporte une empreinte d'impression ou d'illustration, soit par le second plat, selon le cas. Tous les autres exemplaires originaux sont filmés en commençant par la première page qui comporte une empreinte d'impression ou d'illustration et en terminant par la dernière page qui comporte une telle empreinte.

Un des symboles suivants apparaîtra sur la dernière image de chaque microfiche, selon le cas: le symbole  $\rightarrow$  signifie "A SUIVRE", le symbole  $\nabla$  signifie "FIN".

Les cartes, planches, tableaux, etc., peuvent être filmés à des taux de réduction différents. Lorsque le document est trop grand pour être reproduit en un seul cliché, il est filmé à partir de l'angle supérieur gauche, de gauche à droite, et de haut en bas, en prenant le nombre d'images nécessaire. Les diagrammes suivants illustrent la méthode.

1296 0032

S 001  
1975

PIONEERS' CABIN,  
INDUSTRIAL EXHIBITION PARK,  
TORONTO, 1896.

---

On the walls are heads, mostly small engravings, of the following personages:—Columbus, with his monument at Genoa and Madrid; Cortez, Jacques Cartier, Champlain, Maisonneuve, Montcalm, Sebastian Cabot, Gov. Simcoe and Chief Justice Osgoode, Francis Gwillim Simcoe, Capt. James Cook, Major Robert Rogers, Sir Isaac Brock, Guy Carleton, Commodore Yeo, Sir James Craig, Gov. Gore, Peter Russell, Bishop Strachan, Joseph Brant, Marshall Spring Bidwell, Lord Durham, General Pike, Joseph Hume, Viscount Goderich, Admiral Collingwood, Lord Bathurst, Henry Dundas (from whom Dundas Street has its name), Sir George Yonge (Yonge Street has its name from him), William Pitt, Admiral Kempenfelt, Henry Addington (Lord Sidmouth), Col. Talbot, David William Smith (Silhouette), John Galt, Dr. Dunlop, Sir Francis Head, Secretary Jarvis, Registrar Jarvis, Chas. Fothergill, Sir John Colborne, Hon. Robert Baldwin, Dr. Widmer; group of Drs. Bovell, King, Herrick, Bethune; group, Hagarman, H. J. Boulton,

DK

Judge Macaulay, Jameson, and Sir Francis Hincks; large group, The English House of Commons, Pitt speaking; statue of Pitt in the Senate House at Cambridge; statue of George the Second, also at Cambridge—the king encircles with his arm a globe bearing the word “Canada” in large letters (not visible here), commemorative of the conquest of what is now the Dominion of Canada.

The following views of Toronto Harbour at different eras are displayed :

Toronto Harbour, 1793; Toronto Harbour, 1803; Toronto Harbour, 1820; Toronto Harbour, 1873; Toronto, General View, 1839; Toronto, General View, 1851; the Garrison, Toronto, 1841; woodcut, Toronto, 1813, showing Block House near the first Parliament Buildings; outline sketch of first Parliament Buildings; woodcut maps of Toronto, 1794 and 1813; Toronto from Wells' Hill; Cooper's Wharf; Toronto *circa*, 1830; Steamer Frontenac; Lake Simcoe in Indian Summer (called by LaSalle in 1670 Lake Toronto); Red Lion Hotel, Toronto; Wellington Hotel, Toronto; Judge Draper's House, Toronto; Oakhill, Gen. Eneas Shaw's House; Fort Toronto Obelisk; Castle Frank on the Don.

The Log Cabin book-shelf in the Pioneers' Cabin is this year labelled “After-Gleanings.” This is now

the tenth year that a Log Cabin book-shelf has been a distinctive feature in the furniture of the said Cabin during the Industrial Exhibition, the row of books so designated has in each year differed from the corresponding collection in preceding years, but in each case the collection on the shelf has been one that dated back for its commencement to the old pioneer days when literature was scarce and chance volumes of the most miscellaneous character were eagerly picked up whenever an occasion offered.

The Log Cabin book-shelf of the present year contains books that might have been included in some one or other of the previous collections exhibited in the Cabin had they been observed at the proper moment, and hence the shelf of the present year is described as being one of "After-Gleanings."

