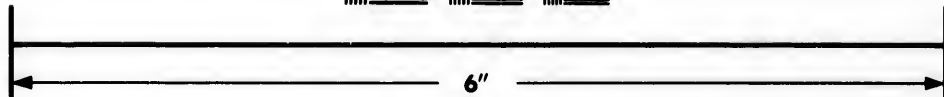
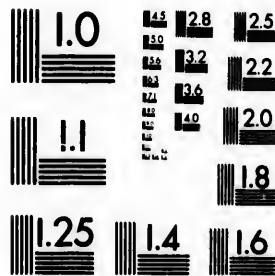


**IMAGE EVALUATION
TEST TARGET (MT-3)**



**Photographic
Sciences
Corporation**

23 WEST MAIN STREET
WEBSTER, N.Y. 14580
(714) 872-4503

18
20
22
25
28
32
36
40
45
50
56
60
64
70
76
80
84
88
92
96
100

**CIHM/ICMH
Microfiche
Series.**

**CIHM/ICMH
Collection de
microfiches.**



Canadian Institute for Historical Microreproductions / Institut canadien de microreproductions historiques

© 1982

01

Technical and Bibliographic Notes/Notes techniques et bibliographiques

The Institute has attempted to obtain the best original copy available for filming. Features of this copy which may be bibliographically unique, which may alter any of the images in the reproduction, or which may significantly change the usual method of filming, are checked below.

L'institut a microfilmé le meilleur exemplaire qu'il lui a été possible de se procurer. Les détails de cet exemplaire qui sont peut-être uniques du point de vue bibliographique, qui peuvent modifier une image reproduite, ou qui peuvent exiger une modification dans la méthode normale de filmage sont indiqués ci-dessous.

- | | |
|--|--|
| <input type="checkbox"/> Coloured covers/
Couverture de couleur | <input type="checkbox"/> Coloured pages/
Pages de couleur |
| <input type="checkbox"/> Covers damaged/
Couverture endommagée | <input type="checkbox"/> Pages damaged/
Pages endommagées |
| <input type="checkbox"/> Covers restored and/or laminated/
Couverture restaurée et/ou pelliculée | <input type="checkbox"/> Pages restored and/or laminated/
Pages restaurées et/ou pelliculées |
| <input type="checkbox"/> Cover title missing/
Le titre de couverture manque | <input checked="" type="checkbox"/> Pages discoloured, stained or foxed/
Pages décolorées, tachetées ou piquées |
| <input type="checkbox"/> Coloured maps/
Cartes géographiques en couleur | <input type="checkbox"/> Pages detached/
Pages détachées |
| <input type="checkbox"/> Coloured ink (i.e. other than blue or black)/
Encre de couleur (i.e. autre que bleue ou noire) | <input checked="" type="checkbox"/> Showthrough/
Transparence |
| <input type="checkbox"/> Coloured plates and/or illustrations/
Planches et/ou illustrations en couleur | <input type="checkbox"/> Quality of print varies/
Qualité inégale de l'impression |
| <input type="checkbox"/> Bound with other material/
Relié avec d'autres documents | <input type="checkbox"/> Includes supplementary material/
Comprend du matériel supplémentaire |
| <input type="checkbox"/> Tight binding may cause shadows or distortion
along interior margin/
La reliure serrée peut causer de l'ombre ou de la
distortion le long de la marge intérieure | <input type="checkbox"/> Only edition available/
Seule édition disponible |
| <input type="checkbox"/> Blank leaves added during restoration may
appear within the text. Whenever possible, these
have been omitted from filming/
Il se peut que certaines pages blanches ajoutées
lors d'une restauration apparaissent dans le texte,
mais, lorsque cela était possible, ces pages n'ont
pas été filmées. | <input type="checkbox"/> Pages wholly or partially obscured by errata
slips, tissues, etc., have been refilmed to
ensure the best possible image/
Les pages totalement ou partiellement
obscurcies par un feuillet d'errata, une pelure,
etc., ont été filmées à nouveau de façon à
obtenir la meilleure image possible. |
| <input type="checkbox"/> Additional comments:
Commentaires supplémentaires: | |

This item is filmed at the reduction ratio checked below/
Ce document est filmé au taux de réduction indiqué ci-dessous.

10X	14X	18X	22X	26X	30X
<input type="checkbox"/>	<input type="checkbox"/>	<input type="checkbox"/>	<input checked="" type="checkbox"/>	<input type="checkbox"/>	<input type="checkbox"/>
12X	16X	20X	24X	28X	32X

The copy filmed here has been reproduced thanks to the generosity of:

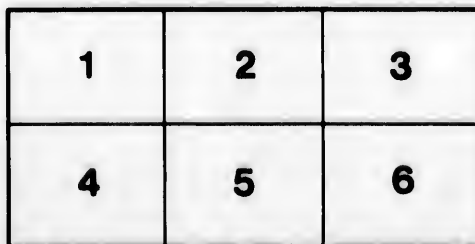
Library Division
Provincial Archives of British Columbia

The images appearing here are the best quality possible considering the condition and legibility of the original copy and in keeping with the filming contract specifications.

Original copies in printed paper covers are filmed beginning with the front cover and ending on the last page with a printed or illustrated impression, or the back cover when appropriate. All other original copies are filmed beginning on the first page with a printed or illustrated impression, and ending on the last page with a printed or illustrated impression.

The last recorded frame on each microfiche shall contain the symbol \rightarrow (meaning "CONTINUED"), or the symbol ∇ (meaning "END"), whichever applies.

Maps, plates, charts, etc., may be filmed at different reduction ratios. Those too large to be entirely included in one exposure are filmed beginning in the upper left hand corner, left to right and top to bottom, as many frames as required. The following diagrams illustrate the method:



L'exemplaire filmé fut reproduit grâce à la générosité de:

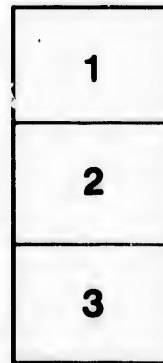
Library Division
Provincial Archives of British Columbia

Les images suivantes ont été reproduites avec le plus grand soin, compte tenu de la condition et de la netteté de l'exemplaire filmé, et en conformité avec les conditions du contrat de filmage.

Les exemplaires originaux dont la couverture en papier est imprimée sont filmés en commençant par le premier plat et en terminant soit par la dernière page qui comporte une empreinte d'impression ou d'illustration, soit par le second plat, selon le cas. Tous les autres exemplaires originaux sont filmés en commençant par la première page qui comporte une empreinte d'impression ou d'illustration et en terminant par la dernière page qui comporte une telle empreinte.

Un des symboles suivants apparaîtra sur la dernière image de chaque microfiche, selon le cas: le symbole \rightarrow signifie "A SUIVRE", le symbole ∇ signifie "FIN".

Les cartes, planches, tableaux, etc., peuvent être filmés à des taux de réduction différents. Lorsque le document est trop grand pour être reproduit en un seul cliché, il est filmé à partir de l'angle supérieur gauche, de gauche à droite, et de haut en bas, en prenant le nombre d'images nécessaire. Les diagrammes suivants illustrent la méthode.



NWp
971.61
Reser

ROYAL COLUMBIAN HOSPITAL.

REPORT OF THE BOARD OF MANAGEMENT FOR THE YEAR ENDING 12th FEBRUARY, 1863.

MR. CHAIRMAN,

SIR,—In submitting the following report of the Board of Management of the Royal Columbian Hospital for the year ending 31st Jan., 1863, there are a great many items of importance that will necessarily have to be noticed in their first report, and therefore they respectfully claim the attention and indulgence of the public.

During the fall of 1861, the growing importance of the Colony, and the rapid increase of our population, especially in the mining season, suggested to many benevolent and philanthropic persons the great necessity that existed for a general hospital in the city of New Westminster. An institution, when inaugurated, to be conducted on liberal principles, open to all deserving patients, and free from all denominational influences. On the 12th of February, 1862, an adjourned public meeting was held in this Court House, when the present board, according to provisional regulations, were elected for one year. One of their first duties was to make an appeal to the colonists for that material aid which the charitable object deserved; they are happy to say that the call met with a response that would have been laudable from a much larger community than ours. As soon as the Board of Man-

agement were in receipt of sufficient funds, tenders were invited to construct a building according to plans and specifications kindly prepared by Colonel Moody and the officers of the Royal Engineers. We need scarcely make comment at this period respecting the building, as it stands a monument of the indomitable energy and determination of British Columbians to accomplish a noble and munificent enterprise. A judicious selection of real estate has been made, and liberally granted by the Government to be vested in the Trustees, viz: Suburban sections 37, 38, 8, 35, 36, 9, about ten and a half acres, in Block VI; town lots 17 and 18, Block XXXI. The board have secured by purchase the adjoining lot the building, and the Government has kindly granted to the institution three additional lots in the same Block, consequently the property to be vested in the Trustees is, town lots 13, 14, 15, 16, 17 and 18, Block XXXI; and the suburban sections previously mentioned; and however great the future of the Colony may be, it will be found that sufficient lands are held in trust to meet all requirements, indeed we may reasonably expect that the revenue derived from this source hereafter will in a great measure defray the expenses of the institution; but it devolves upon the public to grasp boldly the subject and provide.

a home for the indigent sick. His Excellency the Governor, in response to a memorial forwarded him from the people during last summer, gave to the institution a sum of two thousand five hundred dollars. A further appeal for additional aid has been made by the Board of Management, and they regret to inform the public that the reply received does not hold out any immediate prospects of relief, but they do not doubt that His Excellency will assist when the exchequer of the Colony is more flourishing than at this present moment.

We now approach a subject in connection with charitable institutions, mainly supported by voluntary aid, always regarded as the most interesting and necessary statement, viz, the financial accounts.

RECEIPTS.

New Westminster list,	\$2842 92½,
Douglas "	206 25,
Lillooet "	200 00,
Lytton "	235 04,
Hope "	000 00,
Yale "	000 00,
Government Grant,	2500 00,
	<hr/>
	\$5984 21½.

EXPENDITURE.

T. W. Graham, for construction of building, according to plans &c.,	\$3396 00,
Fencing, painting, whitewashing &c.,	495 00,
Small-pox Hospital,	170 00,
Furniture, &c.,	312 52½,
Supplies,	959 83½,
Lot adjoining building,	170 00,
Superintendence,	75 00,
Sundry accounts,	44 72,
	<hr/>
	\$5623 08.
In hand,	361 13½.
	<hr/>
Amount of Receipts,	\$5984 21½.

DEBITS.

To meet the account of Dr. Jones,	83 16½,
Four months salary to do,	166 66,
"British Columbian" Office,	82 50,
Cunningham & Ashwell,	45 87½,
Harris & Co.,	166 56½,
Graham & Seringgeour,	9 00,
Richard Holland,	114 00,
balance of salary to do.,	200 00,
Colonial Hotel,	5 00,
James Syme,	14 50,
W. D. Ferris,	11 00,
J. A. Webster,	245 00,
Smith & Murray,	91 81,
	<hr/>
	\$1335 09.
In hand,	361 13½.
	<hr/>
Balance due to creditors,	\$1073 95½.

It will be seen that this statement shows a deficiency of one thousand and seventy-three dollars and ninety-five and a half cents (\$1073-95½.) However, the good people of Lillooet promised a much larger sum than they have contributed, and we hope that when they see the great necessity that exists for fulfilling their promises, they will kindly forward the balance. Neither have the subscriptions from Hope and Yale yet been forwarded.

At a general meeting of the Industrial Committee a sum of four or five hundred dollars, plus the requirements for that purpose, was decided to be handed to the Board of Management; however, as no advice has been received here of the expenditure incurred by the Agents of "British Columbia" in London, that amount must, for the present, remain in abeyance.

The Board of Management desire to accord a vote of thanks to His Excellency the Governor for a grant of \$2500 00,
To the officers and men of the Royal Engineers, for the proceeds of a theatrical performance at their club, the sum of \$354 50.
To the Chief Inspector of Police, for granting the use of convict labor in clearing and grading town lots 17 and 18, Block XXXI, the site of the hospital.

Several instances of liberality have occurred, and the board feel they cannot omit mentioning one or two ; the first from Mr. L. Hoyt, for rendering his account received, as an additional subscription \$13 05 ; the second is an offer of Dr. Jones to give his valuable services free of cost, until such time as the Board of Management are in receipt of funds ; whether this offer should be accepted or not, it is too liberal to be passed over without receiving the thanks of the community.

Before the hospital was completed, the Board of Management gave relief to three small-pox patients, and four others. On the 7th of October the institution was opened for the reception of the sick. Since that date nineteen patients have been received at the hospital. Eleven have been discharged ; and three have died. And there are five patients yet in hospital. In addition to the above they have also afforded relief to ten out-door patients.

Of the number admitted for medical care,

Six	came from	Yale,
Two	"	Cariboo,
One	"	Pitt River,
Two	"	Victoria,
Seven	"	New Westminster,
One	"	" Jail,

ARTHUR T. BUSHBY,
Honorary Secretary.

Their nationality was as follows :

Six	from	England,
Four	"	Ireland,
One	"	Norway,
One	"	United States,
One	"	Holland,
One	"	France,
Four	"	Canada,
One	"	Sweden.

It now remains for the public to devise some means for the maintenance and support of the hospital. That an effort will be made the board do not doubt when they make known this fact, that assistance must be given immediately, or the doors will be closed and the patients turned out into the streets. For the credit of the Colony they hope for a better and different result.

The Board of Management, in offering this report, have confined themselves to facts in connection with the hospital ; nevertheless, they will be happy to reply to any question that may suggest itself to any subscriber. As the duties of the present board have expired, this meeting will please elect others to fill their places ; and, before retiring, beg to thank the public for their mark of confidence in electing them as the first Board of Management of the Royal Columbian Hospital.

JAMES COOPER,
President.

