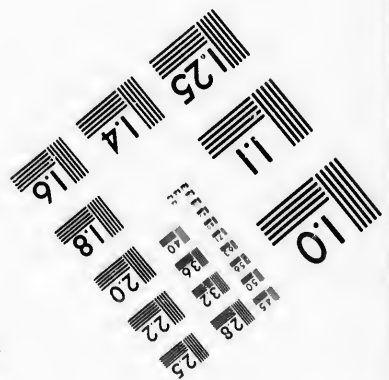
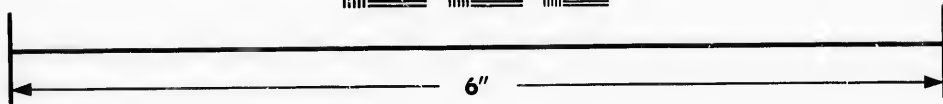
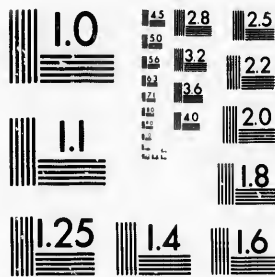


**IMAGE EVALUATION  
TEST TARGET (MT-3)**



**Photographic  
Sciences  
Corporation**

23 WEST MAIN STREET  
WEBSTER, N.Y. 14580  
(716) 872-4503

15  
16  
18  
20  
22  
25

**CIHM/ICMH  
Microfiche  
Series.**

**CIHM/ICMH  
Collection de  
microfiches.**



Canadian Institute for Historical Microreproductions / Institut canadien de microreproductions historiques

11  
10  
01  
05  
51

**© 1987**

Technical and Bibliographic Notes/Notes techniques et bibliographiques

The Institute has attempted to obtain the best original copy available for filming. Features of this copy which may be bibliographically unique, which may alter any of the images in the reproduction, or which may significantly change the usual method of filming, are checked below.

L'Institut a microfilmé le meilleur exemplaire qu'il lui a été possible de se procurer. Les détails de cet exemplaire qui sont peut-être uniques du point de vue bibliographique, qui peuvent modifier une image reproduite, ou qui peuvent exiger une modification dans la méthode normale de filmage sont indiqués ci-dessous.

- |  |  |
|--|--|
| <input type="checkbox"/> Coloured covers/<br>Couverture de couleur   | <input type="checkbox"/> Coloured pages/<br>Pages de couleur   |
| <input type="checkbox"/> Covers damaged/<br>Couverture endommagée  | <input type="checkbox"/> Pages damaged/<br>Pages endommagées   |
| <input type="checkbox"/> Covers restored and/or laminated/<br>Couverture restaurée et/ou pelliculée  | <input type="checkbox"/> Pages restored and/or laminated/<br>Pages restaurées et/ou pelliculées  |
| <input type="checkbox"/> Cover title missing/<br>Le titre de couverture manque   | <input checked="" type="checkbox"/> Pages discoloured, stained or foxed/<br>Pages décolorées, tachetées ou piquées   |
| <input type="checkbox"/> Coloured maps/<br>Cartes géographiques en couleur   | <input type="checkbox"/> Pages detached/<br>Pages détachées  |
| <input type="checkbox"/> Coloured ink (i.e. other than blue or black)/<br>Encre de couleur (i.e. autre que bleue ou noire)   | <input checked="" type="checkbox"/> Showthrough/<br>Transparence   |
| <input type="checkbox"/> Coloured plates and/or illustrations/<br>Planches et/ou illustrations en couleur  | <input type="checkbox"/> Quality of print varies/<br>Qualité inégale de l'impression   |
| <input checked="" type="checkbox"/> Bound with other material/<br>Relié avec d'autres documents  | <input type="checkbox"/> Includes supplementary material/<br>Comprend du matériel supplémentaire   |
| <input type="checkbox"/> Tight binding may cause shadows or distortion<br>along interior margin/<br>La reliure serrée peut causer de l'ombre ou de la<br>distorsion le long de la marge intérieure   | <input type="checkbox"/> Only edition available/<br>Seule édition disponible   |
| <input type="checkbox"/> Blank leaves added during restoration may<br>appear within the text. Whenever possible, these<br>have been omitted from filming/<br>Il se peut que certaines pages blanches ajoutées<br>lors d'une restauration apparaissent dans le texte,<br>mais, lorsque cela était possible, ces pages n'ont<br>pas été filmées. | <input type="checkbox"/> Pages wholly or partially obscured by errata<br>slips, tissues, etc., have been refilmed to<br>ensure the best possible image/<br>Les pages totalement ou partiellement<br>obscurcies par un feuillet d'errata, une pelure,<br>etc., ont été filmées à nouveau de façon à<br>obtenir la meilleure image possible. |
| <input checked="" type="checkbox"/> Additional comments: /<br>Commentaires supplémentaires:  | Docket title page is bound in as last page in book but filmed as first page on fiche.  |

This item is filmed at the reduction ratio checked below/  
Ce document est filmé au taux de réduction indiqué ci-dessous.

10X	14X	18X	22X	26X	30X
<input type="checkbox"/>	<input type="checkbox"/>	<input type="checkbox"/>	<input type="checkbox"/>	<input checked="" type="checkbox"/>	<input type="checkbox"/>
12X	16X	20X	24X	28X	32X

The copy filmed here has been reproduced thanks to the generosity of:

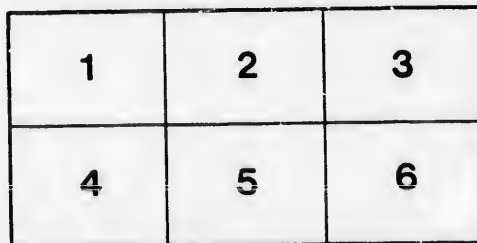
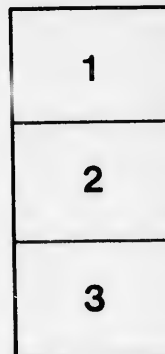
Seminary of Quebec  
Library

The images appearing here are the best quality possible considering the condition and legibility of the original copy and in keeping with the filming contract specifications.

Original copies in printed paper covers are filmed beginning with the front cover and ending on the last page with a printed or illustrated impression, or the back cover when appropriate. All other original copies are filmed beginning on the first page with a printed or illustrated impression, and ending on the last page with a printed or illustrated impression.

The last recorded frame on each microfiche shall contain the symbol → (meaning "CONTINUED"), or the symbol ∇ (meaning "END"), whichever applies.

Maps, plates, charts, etc., may be filmed at different reduction ratios. Those too large to be entirely included in one exposure are filmed beginning in the upper left hand corner, left to right and top to bottom, as many frames as required. The following diagrams illustrate the method:



L'exemplaire filmé fut reproduit grâce à la générosité de:

Séminaire de Québec  
Bibliothèque

Les images suivantes ont été reproduites avec le plus grand soin, compte tenu de la condition et de la netteté de l'exemplaire filmé, et en conformité avec les conditions du contrat de filmage.

Les exemplaires originaux dont la couverture en papier est imprimée sont filmés en commençant par le premier plat et en terminant soit par la dernière page qui comporte une empreinte d'impression ou d'illustration, soit par le second plat, selon le cas. Tous les autres exemplaires originaux sont filmés en commençant par la première page qui comporte une empreinte d'impression ou d'illustration et en terminant par la dernière page qui comporte une telle empreinte.

Un des symboles suivants apparaîtra sur la dernière image de chaque microfiche, selon le cas: le symbole → signifie "A SUIVRE", le symbole ∇ signifie "FIN".

Les cartes, planches, tableaux, etc., peuvent être filmés à des taux de réduction différents. Lorsque le document est trop grand pour être reproduit en un seul cliché, il est filmé à partir de l'angle supérieur gauche, de gauche à droite, et de haut en bas, en prenant le nombre d'images nécessaire. Les diagrammes suivants illustrent la méthode.

ails  
du  
difier  
une  
image

raca  
o

elure,  
à

he.

32X

IN APPEAL.

JOHN MUNRO, Appellant,

*And*

PAUL VAILE, Respondent.

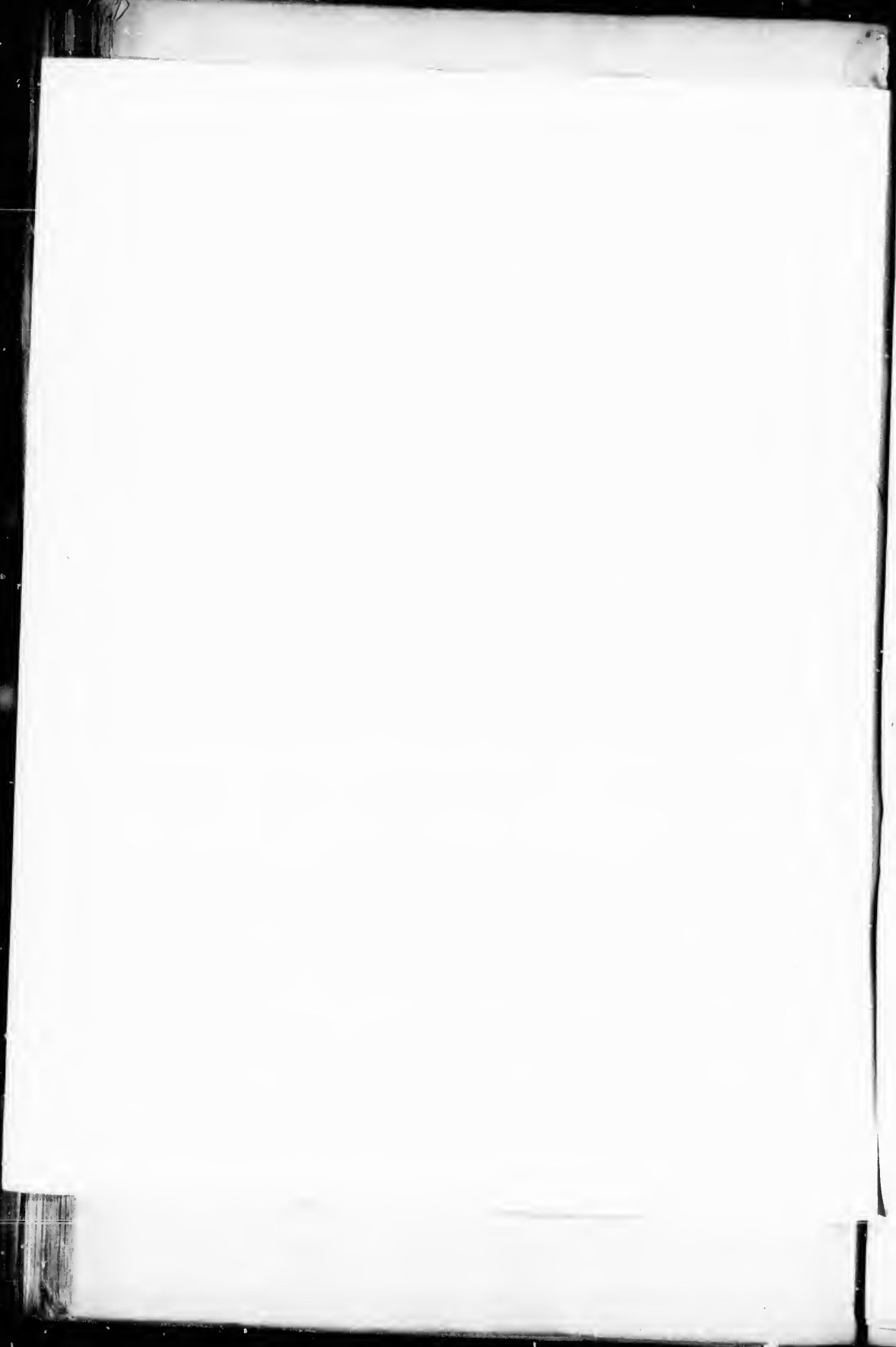
RESPONDENT'S CASE.

1110 157

IN APPEAL.

JOHN MUNRO,  
Appellant,

52



3  
a

PRVINCE  
OF  
LOWER CANADA, }

IN APPEAL.

JOHN MUNRO,

Appellant,

AND

PAUL VALLE,

Respondent.

THE RESPONDENT'S CASE.

**T**HIS was an "Action d'Injures" brought by the Respondent Paul Vallé, Esqr, Surveyor of the Highways &c. for the City and Parish of Quebec against the Appellant John Munro, a Merchant of this City.

The Declaration contains two Counts, the first of which alleges the Appellant to have, with the malicious intent therein expressed, *composed and published and cause to be published* a Libel containing the false, scandalous, malicious, defamatory, libellous matter therein recited of and concerning the said Paul Vallé and his said Office of Surveyor &c.—The second Count states the Appellant to have *published* the same Libel with the like malicious intention &c.

The inconveniences alleged by the Respondent to have resulted to him from the composition and publication of this Libel are fully enumerated in his Declaration.

Conclusion £1000 Damages and Costs.

The Defendant/Pleas were :

1<sup>o</sup> Défense au fonds en droit which the Defendant upon argument could not support.

2<sup>o</sup> A défense au fonds en fait, upon which issue having been raised, an Enquête was ordered, which accordingly took place on the ~~fifteen~~ 15<sup>th</sup> of October last, when it was proved that the Libel alleged in the Respondent's Declaration was all ~~at~~ the proper hand writing of the Appellant, and had been publicly handed by him to the Clerk of the Peace, Mr. Perrault, in the Court of Quarter Sessions sitting that Court at Quebec, and there publicly read at the Appellant's request before a full audience.

The Appellant endeavoured to prove by witnesses his pecuniary inability to pay a large sum of money and how far he has succeeded, would still be a problem, were it not evident that the Court below have been powerfully moved by his Plea of Poverty and have on that account chastised him with a sparing hand.

The Judgment of the Court below by which the Appellant was on the nineteenth of October last found guilty of composing and publishing the scandalous Libel exhibited by the Record, condemns the Appellant to pay to the Respondent the very moderate Sum of £50 currency with costs, and from that Judgment the present Appeal has been brought.

The reasons of Appeal are reducible to three.

1st. The insufficiency of the Declaration.

2dly. The want of Evidence to support the Action.

3dly. The illegality and inadmissibility of the Respondent's Evidence.

The Respondent's Answers are general.

2 copies from B.

Sullivan de St. Real

Avocat

15<sup>th</sup> June 1877







