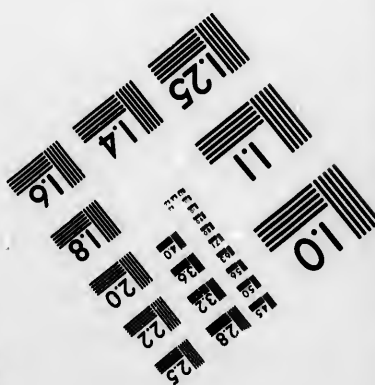
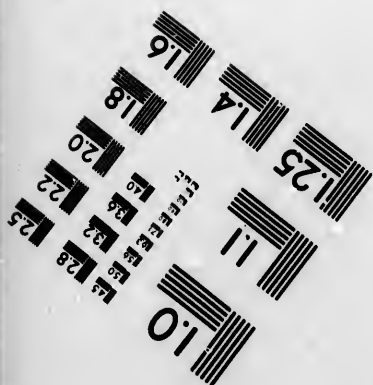
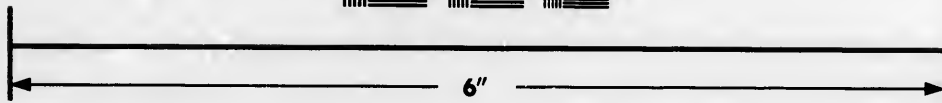
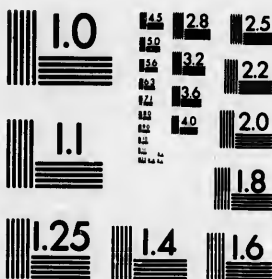


**IMAGE EVALUATION  
TEST TARGET (MT-3)**



**Photographic  
Sciences  
Corporation**

23 WEST MAIN STREET  
WEBSTER, N.Y. 14580  
(716) 872-4503

1.5 1.8  
2.0 2.2  
2.5 2.8  
3.2 3.6  
4.0

**CIHM/ICMH  
Microfiche  
Series.**

**CIHM/ICMH  
Collection de  
microfiches.**



**Canadian Institute for Historical Microreproductions / Institut canadien de microreproductions historiques**

10  
11

**© 1984**

Technical and Bibliographic Notes/Notes techniques et bibliographiques

The Institute has attempted to obtain the best original copy available for filming. Features of this copy which may be bibliographically unique, which may alter any of the images in the reproduction, or which may significantly change the usual method of filming, are checked below.

L'Institut a microfilmé le meilleur exemplaire qu'il lui a été possible de se procurer. Les détails de cet exemplaire qui sont peut-être uniques du point de vue bibliographique, qui peuvent modifier une image reproduite, ou qui peuvent exiger une modification dans la méthode normale de filmage sont indiqués ci-dessous.

- |   |   |
|---|---|
| <input checked="" type="checkbox"/> Coloured covers/<br>Couverture de couleur   | <input type="checkbox"/> Coloured pages/<br>Pages de couleur  |
| <input type="checkbox"/> Covers damaged/<br>Couverture endommagée   | <input type="checkbox"/> Pages damaged/<br>Pages endommagées  |
| <input type="checkbox"/> Covers restored and/or laminated/<br>Couverture restaurée et/ou pelliculée   | <input type="checkbox"/> Pages restored and/or laminated/<br>Pages restaurées et/ou pelliculées   |
| <input type="checkbox"/> Cover title missing/<br>Le titre de couverture manque  | <input type="checkbox"/> Pages discoloured, stained or foxed/<br>Pages décolorées, tachetées ou piquées   |
| <input type="checkbox"/> Coloured maps/<br>Cartes géographiques en couleur  | <input type="checkbox"/> Pages detached/<br>Pages détachées   |
| <input type="checkbox"/> Coloured ink (i.e. other than blue or black)/<br>Encre de couleur (i.e. autre que bleue ou noire)  | <input checked="" type="checkbox"/> Showthrough/<br>Transparence  |
| <input type="checkbox"/> Coloured plates and/or illustrations/<br>Planches et/ou illustrations en couleur   | <input checked="" type="checkbox"/> Quality of print varies/<br>Qualité inégale de l'impression   |
| <input checked="" type="checkbox"/> Bound with other material/<br>Relié avec d'autres documents   | <input type="checkbox"/> Includes supplementary material/<br>Comprend du matériel supplémentaire  |
| <input type="checkbox"/> Tight binding may cause shadows or distortion along interior margin/<br>La reliure serrée peut causer de l'ombre ou de la distortion le long de la marge intérieure  | <input type="checkbox"/> Only edition available/<br>Seule édition disponible  |
| <input type="checkbox"/> Blank leaves added during restoration may appear within the text. Whenever possible, these have been omitted from filming/<br>Il se peut que certaines pages blanches ajoutées lors d'une restauration apparaissent dans le texte, mais, lorsque cela était possible, ces pages n'ont pas été filmées. | <input type="checkbox"/> Pages wholly or partially obscured by errata slips, tissues, etc., have been refilmed to ensure the best possible image/<br>Les pages totalement ou partiellement obscurcies par un feuillet d'errata, une pelure, etc., ont été filmées à nouveau de façon à obtenir la meilleure image possible. |
| <input type="checkbox"/> Additional comments:<br>Commentaires supplémentaires:  |   |

This item is filmed at the reduction ratio checked below/  
Ce document est filmé au taux de réduction indiqué ci-dessous.

10X	14X	18X	22X	26X	30X
<input type="checkbox"/>	<input type="checkbox"/>	<input type="checkbox"/>	<input type="checkbox"/>	<input checked="" type="checkbox"/>	<input type="checkbox"/>
12X	16X	20X	24X	28X	32X

The copy filmed here has been reproduced thanks to the generosity of:

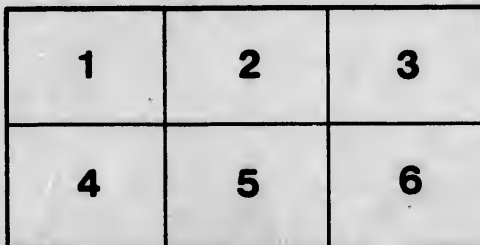
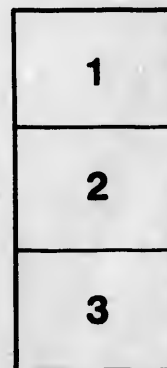
Metropolitan Toronto Library  
Social Sciences Department

The images appearing here are the best quality possible considering the condition and legibility of the original copy and in keeping with the filming contract specifications.

Original copies in printed paper covers are filmed beginning with the front cover and ending on the last page with a printed or illustrated impression, or the back cover when appropriate. All other original copies are filmed beginning on the first page with a printed or illustrated impression, and ending on the last page with a printed or illustrated impression.

The last recorded frame on each microfiche shall contain the symbol  $\rightarrow$  (meaning "CONTINUED"), or the symbol  $\nabla$  (meaning "END"), whichever applies.

Maps, plates, charts, etc., may be filmed at different reduction ratios. Those too large to be entirely included in one exposure are filmed beginning in the upper left hand corner, left to right and top to bottom, as many frames as required. The following diagrams illustrate the method:



L'exemplaire filmé fut reproduit grâce à la générosité de:

Metropolitan Toronto Library  
Social Sciences Department

Les images suivantes ont été reproduites avec le plus grand soin, compte tenu de la condition et de la netteté de l'exemplaire filmé, et en conformité avec les conditions du contrat de filmage.

Les exemplaires originaux dont la couverture en papier est imprimée sont filmés en commençant par le premier plat et en terminant soit par la dernière page qui comporte une empreinte d'impression ou d'illustration, soit par le second plat, selon le cas. Tous les autres exemplaires originaux sont filmés en commençant par la première page qui comporte une empreinte d'impression ou d'illustration et en terminant par la dernière page qui comporte une telle empreinte.

Un des symboles suivants apparaîtra sur la dernière image de chaque microfiche, selon le cas: le symbole  $\rightarrow$  signifie "A SUIVRE", le symbole  $\nabla$  signifie "FIN".

Les cartes, planches, tableaux, etc., peuvent être filmés à des taux de réduction différents. Lorsque le document est trop grand pour être reproduit en un seul cliché, il est filmé à partir de l'angle supérieur gauche, de gauche à droite, et de haut en bas, en prenant le nombre d'images nécessaire. Les diagrammes suivants illustrent la méthode.

errata  
to

pelure,  
on à



32X



**TORONTO PUBLIC LIBRARIES**

**REFERENCE LIBRARY**

630.9712.F11









## The Electoral District of Kinistino.

At a time when, as at present, the labor markets of Europe, and more especially of Great Britain, are over-stocked to a degree almost unprecedented in the history of the world, and when both in the great centres of commerce and in the agricultural districts alike, scores of lusty men, able and willing to work, are literally crowded out from the means of earning a livelihood, it is natural that emigration should suggest itself as the readiest, if not the

classes of persons who find their energies cramped and their prospects "cribbed, cabined and confined" in their own over-populated countries. To such men the writer would say: "Come to the North-West. Whether from the long settled provinces in this continent or from the mother land beyond the broad Atlantic or from the swarming hives of Europe, come to the North-West. You will find here elbow room, which is what you re-



FARM PRODUCTS AT CARROT RIVER AGRICULTURAL SOCIETY'S EXHIBITION, 1892.

only means, of relieving the congestion which is now sapping the vitality of the older countries. The average British farmer is in too many cases no longer the sturdy, independent yeoman of former times. High rents, low prices and deterioration of the soil, combined with an ever increasing competition from abroad, are slowly and surely working his ruin. The struggling agriculturalist, barely able to make both ends meet, or perhaps already in difficulties, is ready like a drowning man to grasp at any straw to save himself from destruction. The Canadian North-West offers him, not a straw, but a stout plank that will not only keep his head above water, but will, if aided by his own exertions, float him safely to the haven of prosperity. This plank is emigration, and the offer applies, not only to agriculturalists, but to mechanics, laborers, men with moderate capital, in fact, almost all

quire, scope for the development and exploitation of your abilities, a field for your labor and capital, and with moderate industry a sure road to competence."

The electoral district of Kinistino, in the Territory of Saskatchewan, to which it is especially intended to call the attention of intending settlers, has perhaps no equal in the whole of the North-West Territories, both as regards fertility of soil, immunity from hail storms and blizzards, regularity of rainfall and the possession of natural and other advantages which render it a most desirable locality either for grain growing or for mixed farming. This splendid tract of country lies a little to the southward of the Saskatchewan river, between the parallels 52 and 53 of North latitude and meridians 102 and 105 West longitude, and embraces an area of about 11,200 square miles, the greater



portion of which is admirably adapted to the needs of the farmer.

The soil is a rich black mould on a clay loam subsoil, its depth varying from 18 inches to 2, and in places 3 or more, feet. This soil is peculiarly favorable to wheat growing, producing heavy crops which ripen early; its natural fertility renders manure unnecessary in any form, the yield of wheat averaging 25 bushels to the acre and weighing in some instances as much as 60 pounds to the bushel. Barley and oats can be raised to perfection in the district of Kinistino, the former yielding 35 and the latter 45 bushels to the acre. Potatoes grow to an immense size and are so prolific that it is not uncommon for a single acre to produce a crop of 450 bushels. Cabbages also attain vast dimensions, beets, onions, peas, beans, turnips, lettuce, and almost every kind of garden stuff, grow well and give fine yields, and with a little care even cucumbers and tomatoes may be ripened in the open air.

The electoral district of Kinistino is at present reached via Prince Albert, but it is confidently expected that the Manitoba and North-Western Railway, which now extends to Yorkton, will be continued to Kinistino at a comparatively early date. This line will traverse the district from end to end and will place Kinistino in direct communication and within a day's journey of Winnipeg. The general aspect of the country is extremely picturesque. A visitor in the summer time approaching from Prince Albert, having crossed the south branch of the Saskatchewan, travels on a well beaten trail for a few miles through a park like expanse of gently undulating prairie, studded with poplar groves and gradually ascending, until crossing the summit of a spur of the Birch Hills, a magnificent panorama presents itself to the view. Far away to the north and east for miles and miles the country lies spread out like a map at the feet of the beholder, the verdure of the great slope of prairie contrasting with the vivid hues of myriads of wild flowers, and relieved by the darker green of the poplar and willow bluffs, with here and there a shimmering patch of azure, where the reflection of the sky above is caught and held by the summer sunlight on the little lakes that add a charm and beauty to the landscape. To the stranger who gazes on the lovely prospect and marks how sparsely scattered are the settlers' homes, that show like white dots on the vast extent of fertile land stretching away into the blue distance, the thought cannot fail to present itself that a locality so well fitted for colonization should no longer be allowed to remain comparatively a terra incognita, and that the time has surely now arrived when the capabilities of this grand district must perforce become more widely known.

The principal settlements in the electoral district are those of Carrot River and Stony Creek, which adjoin each other and together contain of land immediately available for settlers about 552,960 acres, or 1,728 homesteads, or including railway lands nearly 3,500 homesteads. The former of these settlements has already been established for a number of years and in spite of the lack of means of communication and a limited market the farmers are fairly prosperous, some who began with nothing a few years ago being now possessed of considerable property in the shape of flocks and herds. The above mentioned drawbacks will of course cease to exist with the advent of the railway. The Birch Hills settlement, a portion of which is included in the district of Kinistino, contains also many eligible homesteads, which being situated

for the most part on high land are especially well suited for ripening wheat. The soil is somewhat lighter than that of the plains, rich in phosphates and exceedingly fertile. Both timber and water are plentiful, and some of the farmers who have lived for several years in this neighbourhood state that during the whole period of their residence they have never lost a crop by frost.

The Carrot River settlement possesses an agricultural association which was established in 1896 and is now flourishing and doing good work, the exhibits of live stock and farm produce which are shown at its annual meetings being fully equal if not superior to those of any similar institution in the North West Territories. The Stony Creek settlement, which lies to the eastward of that of Carrot River, is of more recent date and possibly owing to its greater distance from Prince Albert, attracted but few settlers until last year when numerous delegates from Vermont and South Dakota, U. S. A., as well as from Eastern Canada, visited the locality. They were so favorably impressed by all they saw and so unanimous in their praises of the district that to the reports which they circulated on their return is probably due the fact that within the last 12 months or so no fewer than 150 persons have entered homesteads in the vicinity of Stony Creek, where the Dominion Government has recently caused surveys to be made of about 24 townships, while a further influx of settlers is expected to take place during the present year. A post office, to which the name of Melfort has been given, has already been established, a grist and saw mill is in course of construction on the Creek, a medical man has settled in the neighborhood, and it may be safely assumed that with the near prospect of railway communication the population of both the Carrot River and Stony Creek settlements will increase by leaps and bounds.

Wood, water and hay, the three great desiderata of the farmer are abundant in nearly all parts of the district of Kinistino. For building purposes' poplar trees, both of the white and black varieties, can be readily obtained from 12 to 16 inches in diameter, spruce, tamarac, and in some localities birch are also available. The common grey willow also attains large size and makes valuable material for fence pickets and other purposes.

Water of excellent quality for domestic use is supplied by springs, which in many places, especially in the neighborhood of the Pasquia Hills, are very numerous, where these do not exist, water can readily be obtained by digging wells at depths from 8 to 40 feet. There are also many lakes in the district, some of which are of considerable size, and contain perch, jack and other fish in great quantities. Waterhen Lake, whence the Carrot River has its outlet, is about seven miles long by three in width, it is situated in a fine fertile country and although somewhat reduced in volume of late years is still a magnificent piece of water. In its vicinity are several fine farms, among which may be mentioned that of Mr. W. F. Myers, who represents Kinistino in the North West Legislative Assembly. Mr. Chas. Lowrie and Mr. Thos. Sanderson may also be cited as successful farmers in the same neighborhood. To the sources of water supply already mentioned may also be added the several creeks, which taking their rise in the Birch, and Pasquia Hills, flow in a northerly direction through the fertile plains until they join the Carrot River at various points. Stony Creek, which traverses the settlement to which it gives its name, is a rapid stream of great beauty, its waters lucid and sparkling pursue a devious course midst lovely

land are especially well  
The soil is somewhat  
ins, rich in phosphates  
both timber and water  
the farmers who have  
is neighbourhood state  
riod of their residence  
by frost.

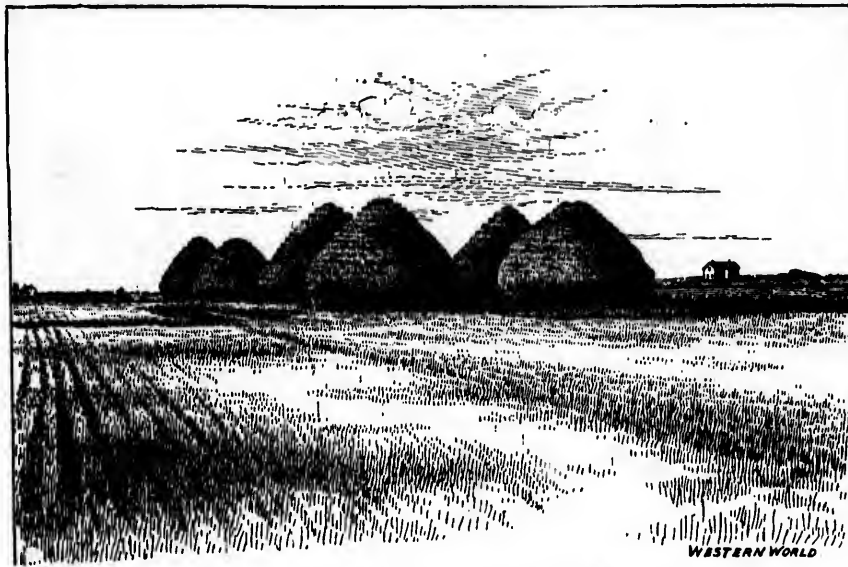
ment possesses an agri-  
was established in 1896  
doing good work, the  
arm produce which are  
gs being fully equal if  
y similar institution in  
The Stony Creek set-  
e eastward of that of  
ecent date and possibly  
ice from Prince Albert,  
ntil last year when num-  
nt and South Dakota, U.  
n Canada, visited the lo-  
rably impressed by all  
n their praises of the dis-  
aich they circulated on  
the fact that within the  
er than 150 persons have  
vicinity of Stony Creek,  
vernment has recently  
of about 24 townships,  
tlers is expected to take  
year. A post office, to  
rt has been given, has  
grist and saw mill is  
u the Creek, a medical  
ghorhood, and it may  
n the near prospect of  
population of both the  
eck settlements will in-

e three great desidera-  
: in nearly all parts of  
For building purposes  
white and black varieties,  
om 12 to 16 inches in  
and in some localities  
the common grey willow  
makes valuable material  
purposes.

ity for domestic use is  
in many place, espec-  
of the Pasquia Hills, are  
ese do not exist, water  
digging wells at depths  
are also many lakes in  
ch are of considerable  
ack and other fish in  
en Lake, whence the  
is about seven miles  
situated in a fine fertile  
what reduced in volume  
nificant piece of water.  
ne farms, among which  
Mr. W. F. Myers, who  
North West Legislative  
rie and Mr. Thos. San-  
a successful farmers in  
To the sources of water  
may also be added the  
g their rise in the Birch,  
n a northerly direction  
ntil they join the Carrot  
ony Creek, which tra-  
rich it gives its name, is  
ity, its waters lucid and  
us course midst lovely

scenery, now dashing furiously over huge boulders of lime stone and granite in the veiled depths of dark ravines half hidden by the dense undergrowth of bush and weeds that twine and tangle on its banks, now babbling over sandy shallows where the sun glancing through the overhanging willows throws chequered shadows on the ripples as they swirl over their gravelly bed and anon widening out into little pools where sleek cattle quench their thirst, pools that in days not so long gone by mirrored back the shaggy frontlet of the bison or re-echoed to the sudden splashing of the startled beaver. Bison and beaver also are vanished, though traces of them are still visible in the bleached bones that strew the prairie, and the ruined dams and dried up beaver meadows that meet the eye at almost every bend of the stream. The water of Stony Creek is exceedingly palatable and very beneficial to live stock, it is moreover available all

And now a word as to climate. There are still many people, otherwise well informed, especially in Great Britain, who cling to the delusion that the climate of the North-West Territories is not far different in its characteristics from that of the Arctic regions, that is ice-bound for three-quarters of the year and fit only for Hudson's Bay men and fur bearing animals. Nothing could be further from the truth, nothing more easily disproved. The winter season, though undeniably cold, is by no means so formidable as might be imagined if one judged only from the readings of the thermometer, nor is it of inordinate duration, a steady frost usually sets in about the second week in November and continues with but slight intermission until the middle of March; during this period the temperature occasionally falls to 40 and even 50 degrees below zero, but these cold snaps seldom last more than a few days at a time and are rarely accompanied by high



STACKS ON FARM OF MR. W. F. MYERS, M. L. A., KINISTINO.

the year round, never drying up even in the hottest seasons.

Hay of the most nutritious kind is furnished in plenty by the rich grasses and sedges which grow abundantly on the margins of the sloughs that occur here and there in all parts of the district, and the upland pasturage is unequalled for its fattening properties. Native horses require no other food and may be turned out in the winter without artificial shelter, they can easily obtain a sufficiency of food by pawing away the snow and usually are found in excellent condition on the return of spring. Cattle, being unable to paw, require to be fed with hay during the winter months. Grass to be used for hay is usually in its prime about the latter end of July, though it is frequently cut much later. No tedding is necessary, the grass being left where it falls under the mower for about 24 hours, and then raked into cocks for a short period before being stacked, it is then fit for use and requires no further curing.

wind; the atmosphere moreover is so dry that the lowest temperature experienced is not nearly so unbearable as it would be in a country like England for example, where the air contains a large amount of moisture. The terrible storms of wind and snow known as blizzards, which sweep over the bare plains of Dakota, U.S.A., are here unknown, and it is seldom indeed that out-door work is stopped even for a day by inclemency of weather. Snow, as a general rule, does not fall in any great quantity until after Christmas and is scarcely ever more than 16 to 20 inches in depth, it thaws out gradually towards the end of March and by the second week in April, the waters, released from their icy thrall, are again in motion in the creeks, men and teams are at work in the fields, and though an occasional snowstorm may for a few brief hours impart a wintry aspect to the landscape it is quickly effaced by the genial sunshine, while the advent day by day of migratory birds gives emphasis to nature's fiat that spring-

tide has at length arrived. Plowing and sowing now proceed with the least possible delay, germination quickly follows, and the grain, receiving ample moisture as the soil gradually thaws out, grows with astonishing rapidity.

June is usually a rainy month and it is for the regularity and plenitude of its rainfall that the district of Kinistino stands pre-eminent. This satisfactory state of things is chiefly owing to the ranges of wooded hills which traverse the district, and the thickly timbered country in the south which engender humidity and attract thunderstorms; it is also noteworthy that notwithstanding this abundant rainfall there is no lack of sunshine; the sky is but seldom entirely overcast, and the alternation of heavy showers with unclouded summer heat offers the most favorable condition for rapid development of growing crops. From the middle of August fine weather may be expected right through the fall, and harvesting operations are seldom interrupted by rain. About the equinox snowstorms generally occur, after which comes another spell of fine weather, which lasts until the setting in of winter in the early part of November. That the climate is healthy all are agreed; even in the height of summer, when the glass occasionally rises above 90° in the shade, the heat is far less oppressive and sultry than in more humid climates. There is generally a cool breeze all day and men can work in the sun without the feeling of lassitude which a hot day in England produces. Sunstroke is comparatively unknown, and let the days be ever so hot they are invariably followed by cool, pleasant nights. No malaria exists, even in marshy localities, and notwithstanding the severity of the winter, diseases of the chest and lungs are extremely rare, in fact cases are not unfrequent in which persons with a tendency to pulmonary weakness have been set up in health by a change to the invigorating air of the North-West.

Much has been said and written concerning the risk of damage to growing wheat by early frosts; in many cases this risk has been greatly exaggerated. That such frosts do occasionally occur is undeniable, and it is equally true the farmers in the district of Kinistino are from time to time subjected to loss from this cause, though to a less extent than in most other localities. The period of anxiety is in the latter part of August when a lowering of temperature sometimes takes place on calm nights, causing the thermometer to fall a few degrees below freezing point at a time when the wheat is in the milk stage and thereby causing some damage to crops, especially if the field be situated in a hollow or below the level of the surrounding country, but wheat sown in good time, in a suitable situation on properly cultivated ground, is very seldom frozen, and what danger exists can be still further lessened by the employment of early varieties of seed grain. It should also be remembered that wheat even if frosted is not a total loss but is still available for fattening live stock.

Of all the advantages, natural and otherwise, which render the district of Kinistino so greatly adapted in every way to the needs of settlers, the most important, and that which places it far in advance of other new settlements in the North-West Territories, is the early prospect of direct railway communication. There is now no reasonable doubt that the Manitoba and North-Western railway which is already open from Portage la Prairie, on the main line of the Canadian Pacific Railway, to Yorkton, in the Wallace district, will in the near future be carried on to Prince Albert. This line

will pass through the heart of the most fertile portion of the unsettled as well as the settled parts of the district, with an effect upon their prosperity which cannot be over estimated. Let us pause for a moment to consider what this effect will be. It will mean primarily an influx of settlers to be followed by the erection of grain elevators, the establishment of creameries, a rise in the value of real estate, the advent of men of enterprise and capital, a ready market for all kinds of produce, and the formation of the nucleus of another city to be added to the list of those glorious monuments of progress which, mushroom like in their speedy growth, though resembling the oak in stability, are year by year steadily increasing in number throughout the western portion of the vast Dominion. And vain would be the endeavor to fix a limit to the rise and progress of such a city, for great as are the immediate advantages to be derived from the transit of the Manitoba and North-Western line through the district, they are slight when compared with the stupendous impulse to commercial and agricultural enterprise which will thrill through the North-West on the completion of a railway from Winnipeg to Hudson's Bay, with a shipping terminus at Fort Churchill. This projected railway has already been sanctioned by the Dominion Parliament and its construction in view of the rapidly increasing population of Manitoba and the North-West Territories will in all probability be not much longer deferred. That such an outlet has become a necessity to the proper development of the resources of this country is patent to all, to say nothing of its value as a port of shipment of food supplies to Great Britain in the event of war, while its effect as a stimulus to the trade and well-being of Western Canada is simply incalculable.

The settlers in the district of Kinistino will probably, owing to its geographical position, be more directly benefited by the proposed Hudson's Bay line than those of any other portion of the Territories. Their cattle, for example, will naturally command a considerably higher price and will reach the coast in better condition when sold within 500 miles of a shipping port than when, as at present, they have to be conveyed by rail to Montreal, a distance of over 2500 miles, and what is of still more importance to farmers in these regions there will be a ready market for coarse grain as well as wheat. If one considers the immense quantities of barley and other cereals annually shipped to the United Kingdom from the Danube, (Odessa, Taganrog and other places in the Black Sea and Sea of Azov, and reflects that the sea transit from these ports is longer and the navigation more intricate than is the voyage from Churchill to Liverpool, it is natural to conclude that as soon as the Hudson's Bay Railway is open to traffic the demand for barley, oats, etc., for shipment by this outlet will speedily attain proportions extremely satisfactory to farmers who are fortunate enough to be located in the vicinity of the new route.

Speaking of barley leads to the subject of hog raising. These animals can be reared in this district with great facility and at a minimum of cost. There can be little doubt that speculative enterprise will shortly prompt the erection of a curing factory and there is no reason why, with the Hudson's Bay line as a means of transport, pork and bacon from the North-West Territories should not be placed on the English markets at as cheap a rate and equal, if not superior, in quality to that which is at present exported to Great Britain from Chicago, thus opening the door to an industry both lucrative in character and unbounded in extent.

of the most fertile por-  
 all as the settled parts of  
 t upon their prosperity  
 mated. Let us pause for  
 t this effect will be. It  
 rush of settlers to be  
 fol-rain elevators, the estab-  
 lish in the value of real  
 of enterprise and capital,  
 ida of produce, and the  
 f another city to be addi-  
 tional monuments of pro-  
 like in their speedy  
 g the oak in stability,  
 increasing in number  
 ortion of the vast Domin-  
 the endeavor to fix a limit  
 such a city, for great as  
 ages to be derived from  
 and North-Western  
 they are slight when  
 ous impulse to commer-  
 prise which will thrill  
 on the completion of a  
 Hudson's Bay, with a  
 rt Churchill. This pro-  
 been sanctioned by the  
 its construction in view  
 population of Manitoba  
 ories will in all proba-  
 deferred. That such an  
 vity to the proper devel-  
 this country is patent  
 value as a port of ship-  
 great Britain in the event  
 a stimulus to the trade  
 Canada is simply incal-

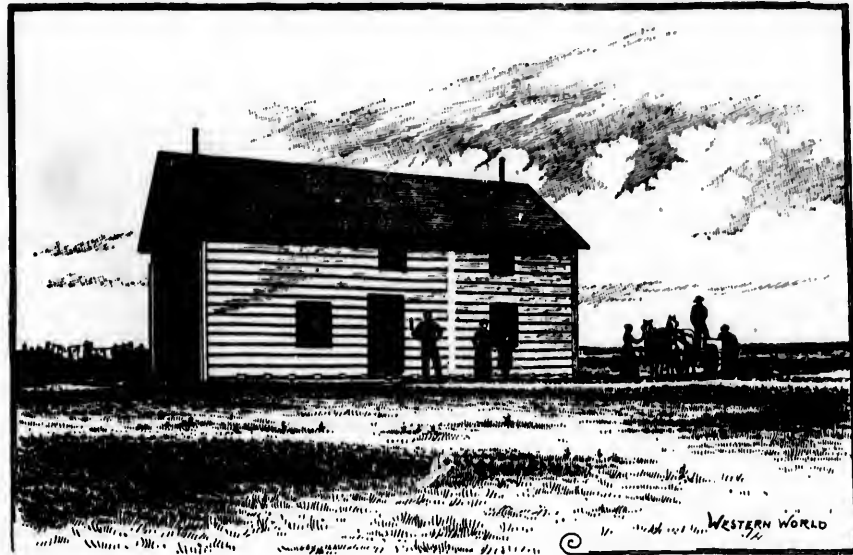
ct of Kinistino will pro-  
 phical position, be more  
 proposed Hudson's Bay  
 r portion of the Terri-  
 xample, will naturally  
 higher price and will  
 ndition when sold with-  
 port than when, as at  
 onveyed by rail to Mont-  
 0 miles, and what is of  
 armers in these regions  
 ket for coarse grain as  
 considers the immense  
 other cereals annually  
 gdom from the Danube,  
 er places in the Black  
 ects that the sea trans-  
 ger and the navigation  
 voyage from Churchill  
 to conclude that as soon  
 way is open to traffic the  
 etc., for shipment by this  
 proportions extremely  
 are fortunate enough to  
 of the new route.

s to the subject of hog  
 an be reared in this dis-  
 id at a minimum of cost.  
 at speculative enterprise  
 ection of a curing fac-  
 son why, with the Hud-  
 of transport, pork and  
 Territories should not  
 markets at as cheap a  
 rior, in quality to that  
 ed to Great Britain from  
 door to an industry both  
 unbounded in extent.

With a ready market for cattle, coarse grain and hogs, in addition to wheat and dairy produce, the prosperity of the farmer will be assured, for he will have the satisfaction of knowing that should any portion of his No. 1 hard suffer any injury from untimely frost, the wheat so damaged will not be lost, but converted into a source of direct profit in the shape of pork or beef.

The district of Kinistino with its undulating prairies, rich pasture and pure water is in a high degree suitable for the breeding of sheep, they stand the cold well, give but little trouble and, owing to the dry atmosphere in winter, are free from many diseases which sheep are subject to in other climates. Wolves and coyotes, although sheep are sometimes killed by them, are not sufficiently numerous to cause any great amount of loss, thus the rearing of sheep may be regarded as one of the most profitable branches of mixed farming in

he wings his heavy flight towards the north, or swoops down upon a stubble field to assuage his insatiable appetite for grain. The sand hill crane, a fine bird approaching a turkey in size and very good eating, is frequently seen, and several species of sandpiper and other wading birds are common about the edges of the ponds. About dusk in the autumn evenings the sportsman may enjoy flight shooting to his heart's content; from his hiding-place among the bullrushes on the margin of some lake he hears at short intervals the rapid swishing of many wings and fires shot after shot with deadly effect on the serried columns of ducks as they sweep overhead or come quattering down upon the water by his side. From wild animals of a noxious or dangerous character the district of Kinistino may be said to be almost entirely free, the common black bear is not infrequently met with, but is in every respect harmless. Timber wolves



A PIONEER FARMER'S HOUSE AT STONY CREEK, SASKATCHEWAN.

which the settler can engage, as it is estimated that the returns from wool alone will more than cover the expenses incidental to their raising.

Game of various kinds is plentiful in every part of the district, and in addition to affording healthful recreation to the sportsman forms a valuable adjunct to the settler's larder. Moose, elk and deer are still pretty numerous in the wooded portions of the country, though it must be confessed that much perseverance and a considerable amount of woodcraft are indispensable to success in hunting them. Prairie chickens, wood partridges or ruffed grouse and rabbits are very plentiful and afford good sport during the autumn and winter. Spring is marked by the advent of myriads of wild ducks of many varieties, mallards, spoon bills, red heads, blue and green-winged teal, widgeon and other species arrive in immense numbers and remain until the end of October when the approach of winter drives them to the southward. In the spring may be heard the cry of the wild goose as

are hardly ever seen and the smaller species, such as prairie wolves or coyotes, though apt to worry lambs, have a wholesome dread of mankind.

And now having briefly set forth the natural advantages of this favoured land and having shown how perfectly adapted it is to the needs of the immigrant, it may be well to add a few words regarding the qualifications necessary to success. A man may come into the country with but a few shillings in his pocket and in a few years find himself the owner of a well-stocked and thriving farm, but to attain this he must be healthy and robust, with a capacity for hard manual labor, industrious, self-denying, and with sufficient common sense to enable him to take full advantage of the means which bountiful nature has placed at his disposal. Such a man is absolutely certain to succeed. A moderate amount of capital will enable him to achieve the desired result in a much shorter period.

A previous knowledge of farming, though, desir-



able is not absolutely essential, indeed it is well known there are at this moment in the settlements not a few prosperous farmers who, until they came to the North West Territories, had been engaged in totally different pursuits, but what is really a sine qua non is steady hard work, whether in person or by proxy, if the new comer be in a position to hire labor. With a free grant of 160 acres of splendid land to which he may add another 160 by

purchase on extremely easy terms, a fine climate, exemption from rent and in a great measure from taxation also, the settler who puts his shoulder to the wheel will soon become independent, and in no part of the North West Territories will he find more facilities or have a better prospect of attaining this happy condition than in the electoral district of Kinistino.

## The Kinistino District.

*By Wm. Ogilvie, D. L. S., of the Department of the Interior Survey Staff.*

This district includes townships 35 to 47, ranges 1 to 23 west of the 2nd meridian, and the same townships in ranges 30 to 32 west of the 1st meridian; also townships 45, 46 and 47, ranges 15 to 30 west of the 1st Meridian. Its north west corner almost touches the south branch of the Saskatchewan River. Carrot River rises in the north west part of the district, and crosses its north boundary about range 16 west of the 2nd meridian. The Birch Hills are situated about the middle of the western boundary and continue eastward to about range 15 or 16, when they merge into the Pasquia Hills which continue north eastward and cross the north boundary about range 6. Many fine creeks flow out of these hills northward into Carrot River, principal among which are Melfort creek, (formerly called Stony Creek) and Leather River, (sometimes called the Hanging Hide River.) There is some fair spruce timber situated on the head of these streams, and a small saw and grist mill is in course of erection on Melfort Creek, in township 44, range 18 west of the 2nd meridian.

Mr. Reginald Beatty, who has lived in the township during the past nine years, and has pretty well examined all the surrounding country, states that Carrot River is navigable for flat bottomed, stern wheeled steamers from its mouth up to the junction with Leather River. Carrot River joins the Saskatchewan River just below Indian Pear Island Lake. Red Deer River rises near the centre of the district and flows generally north eastwards through the northeast corner into Lake Winnipegosis. Lakes and ponds are numerous in the district. Many of the former are quite large. The water is generally brackish, but not unfit for use.

It is probable the Manitoba and North Western Railway will cut the west half of the district pretty well in two, and the North West Central Railway will traverse the south west corner. The district also lies almost directly in the line of the probable railway from Prince Albert to Hudson Bay, which, if any railway to the Bay is a success, must also be successful. Its probable means of communication with the markets of the world are therefore equal to those of any other part of the Territories. Prince Albert is distant from Churchill, on the Hudson Bay, by the probable route of the railway between them, about 700 miles, and Churchill is in round numbers about 8000 miles from Liverpool. For the greater part of its length this road will pass through timbered country, much of which will no doubt be available for lumber purposes,

thus placing this district in a most advantageous position for its supply of lumber. In addition to this there are extensive forests on the northern side, which will yield large quantities of lumber. Coal was found last summer in the vicinity of Prince Albert, but as yet its extent is unknown. If found in quantity this will guarantee the surrounding country cheap fuel. It may be that it will be found in other parts of the adjacent country. The soil in the district from its west boundary as far east as range 15 west of the 2nd meridian is to my knowledge nearly all good loamy black clay; and I know I am within the mark when I say, there is as small a percentage of waste land in this part of the district as in any other similar area in any part of the Territories. The easterly part of the district is pretty well wooded, but there appears to be some fine prairie openings in it. Hay lands are numerous in the vicinity of Carrot River and Melfort Creek, and cattle can be raised without much trouble. It is not pretended that cattle can be raised as cheaply here as in the grazing lands proper of the more westerly parts of the Territories, where they can graze out the whole year, for here they have to be sheltered and fed during the winter, but even so with the advantage of much hay, both on the prairie parts and in the woods surrounding it, and its immense advantage of proximity to sea board if the Hudson Bay navigation scheme is developed, I think cattle raising here will pay just as well as on the grazing land further west. There are vast feed grounds in the Birch and Pasquia Hills where wild peas and vetches grow luxuriantly. On these cattle can feed until quite late. Mr. Reginald Beatty has sometimes allowed his young stock to remain out in these hills until December.

A small part of the district on the head of Carrot river has been settled for 12 or 14 years, and crops have been good. Mr. R. Beatty has been farming on Melfort Creek for nine years, and has always been successful. The quantity and quality in both places would compare well with the best. Last summer there was quite an influx of settlers in the Melfort Creek valley from Dakota and other parts of the United States, also some from the eastern provinces and the old country. All seem to be satisfied with their venture and are hopeful for the future. To sum up I would say there is a very large percentage of this district which offers as good inducements for mixed farming and cattle raising as any other part of the North-West.

y terms, a fine climate,  
n a great measure from  
ho puts his shoulder to  
ne independent, and in  
Territories will be find  
etter prospect of attain-  
han in the electoral dis-

## The Stony Creek District.

By Reginald Beatty.

Stony Creek district is situated in the electoral division of Kinistino and during the past summer has attracted a great deal of attention from delegates and immigrants and over 200 homesteads have been entered. Some eight years ago, on retiring from the Hudson's Bay Company's service, during which time I had seen a great part of the North West, I decided to settle with my family on a farm and having heard this district highly praised by the natives, I came out and found it even a finer country than reported, so I located on section 20, township 44, range 18, west of the 2nd meridian, and have continually resided here since.

I have grown wheat, oats, barley and peas, also all kinds of vegetables, with good success, and have had a crop every year, never a complete failure; of the different varieties of wheat sown, Ladoga has proved the surest, invariably ripening before frost. The country as a rule is rolling prairie, well watered by running creeks and occasionally a lake, springs are numerous, and on every farm water can be obtained by digging. Timber is abundant both to the south and east, chiefly poplar with some spruce and birch.

We generally stable our cattle some four months, sometimes less, native horses winter out and do well; last year we lost six pail fed calves early in August and being busy did not bother about them late in the season; we finally found them some 30 miles from home on December 23rd, fat and kicking and drove them home in a day; they would no doubt have easily wintered out.

The district is well situated for prospective rail-

way facilities, the Manitoba and North-Western Railway intend building through the district. The Hudson's Bay Railway will in all probability traverse it, and the most feasible route to the lower Saskatchewan is along the Pasquia hills directly through this settlement. Our post office, Melfort, is now the terminus of the mail route easterly from Prince Albert, saw and grist mills are now being built, on Stony Creek, both a medical man and a veterinary surgeon have settled down amongst us the last summer a large number of stock have been brought in, and the prospects for this season are very bright, and there are numbers of vacant homesteads still to be had, twelve townships having been surveyed during the past summer.

The illustration on page one, is from a photograph showing some of the vegetable, root and grain exhibits at the 1892 show of the Carrot River Agricultural Society. The views on pages 3 and 5 show a group of stacks on the farm of Mr. W. F. Myer's, M. L. A., and the farm house of the pioneer settler, Mr. Reginald Beatty.

Persons wishing to learn more about the district are invited to correspond with Mr. W. F. Myer, M. L. A., whose address is Kinistino, Saskatchewan. The free homesteads in the district are administered by Mr. John McTaggart, Dominion Lands Agent, Prince Albert, Saskatchewan.

## Opinions of Vermont Delegates.

In May of this year a number of delegates from the state of Vermont, U.S.A., on the solicitation of Mr. D. J. Waggoner, Colonization Agent for the Dominion Government, visited the north-east portion of Saskatchewan with a view to selecting lands for settlement. As a result the majority of them decided to locate there, some have already gone on to the lands selected and others are making arrangements to do so. Following are extracts from reports made by them, the originals of which have been officially filed with the Department of the Interior.

J. R. Parker, of Morrisville, Vermont says at Prince Albert they were met by Mr. S. S. D. S., who acted as guide for the party to Stony Creek, where they found as fine a section of country as the sun ever shone upon, with a soil of fine rich mould varying from 12 to 24 inches in depth, in fact one of the best places for mixed farming in the world. It is fast being settled with good, intelligent people and is in his opinion a good place for

industrious people of moderate means to procure homes for themselves.

I. H. Kelley, Barre, Vermont, says that being a farmer of some extent and wishing for broader fields he decided to look over the Saskatchewan district. On May 8th, he started from Prince Albert for Stony Creek, crossing fine farming lands. At Mr. Harper's, where the party stayed the first night, he found some of the finest farming lands he had ever seen, with plenty of timber and water and lots of game. The second night he spent with Mr. Prvin who has a fine farm, on which last season 450 bushels of oats were raised on five acres. There is plenty of timber and water, the soil being a dark rich loam some two feet deep or more. He also saw very fine land at Melfort Creek and was astonished at the quantity of game. Large herds of cattle and large fields of wheat, oats and barley were seen on several farms. He met several settlers with their families, goods and cattle coming from Dakota to settle at Melfort

urvey Staff.

in a most advantageous  
umber. In addition to  
forests on the northern  
e quantities of lumber  
mer in the vicinity of  
its extent is unknown.  
will guarantee the sur-  
el. It may be that it  
s of the adjacent coun-  
ct from its west bound-  
west of the 2nd meridian  
y all good loamy black  
ithin the mark when I  
percentage of waste land  
as in any other similar  
territories. The easterly  
y well wooded, but there  
irle openings in it. Hay  
vicinity of Carrot River  
attle can be raised with-  
ot pretended that cattle  
here as in the grazing  
e westerly parts of the  
n graze out the whole  
o be sheltered and fed  
n so with the advantage  
prairie parts and in the  
its immense advantage  
rd if the Hudson Bay  
veloped, I think cattle  
as well as on the graz-  
ere are vast feed grounds  
uia Hills where wild  
luxuriantly. On these  
te late. Mr. Reginald  
wed his young stock to  
ntil December.  
ct on the head of Carrot  
2 or 14 years, and crops  
Beatty has been farming  
3 years, and has always  
ntity and quality in both  
ell with the best. Last  
a influx of settlers in the  
Dakota and other parts  
some from the eastern  
untry. All seem to be  
and are hopeful for the  
uld say there is a very  
district which offers as  
ked farming and cattle  
of the North-West.



Creek, also a colony of English people. He saw as fine farm lands on his trip as a farmer might wish to have.

Ellis B. Draper, another of the Vermonters, says he went over a large tract of country between Prince Albert and Stony Creek that will settle a million of people. Several townships which were newly surveyed were found to be equally as good as those that were already settled. There is also a large amount of unsurveyed country that is equally as good. The soil at Prince Albert he considered the richest he ever saw, with any amount of good grasses and an abundance of timber for all purposes. He looks upon the Saskatchewan district as the poor or middle man's paradise. He visited several large farms in the vicinity of Prince Albert, seeing one of 900 acres on which the seeding was nearly completed. The live stock was all found in good condition and the country proved to be even better than Mr. Waggoner had represented it. Mr. Draper could not return to Vermont without securing for himself and family 640 acres of land upon which he intends to make his future home.

E. E. Howison, Worcester, Vermont, says he found the Prince Albert district a gently rolling prairie, well watered and wooded. At Carrot river and Stony Creek he found a beautiful deep rich loam suitable for any crop. J. Campbell raised 1000 bushels of oats off 10 acres there, and his general yield

averages, wheat, 40 to 50 bushels an acre; barley, 50 to 60; oats, 60 to 75. He saw a mare and colt that had wintered out and were in excellent condition. He found a good class of settlers, all of them being kind and intelligent. The Stony Creek section is settling up very fast, he considers this country with its soil and climate the finest section to which any industrious man can go. He has taken up a quarter section and will remove from Vermont.

Almon Leach, Craftsburg, Vermont, who also went from Prince Albert to Stony Creek, says that after crossing the south branch of the Saskatchewan he came to a beautiful country with a very rich black soil that cannot fail to bring forth an abundant harvest. He travelled for 7 days seeing a vast extent of the most excellent land and is so satisfied that he has located on 160 acres.

J. F. Lowell, Wolcotte, Vermont, says he visited the Stony Creek district and found a nice farming country with a rich black soil, 20 inches deep. The country is admirably adapted for mixed farming or grain raising and he considered a man with a family could get a living with half the labor necessary in Vermont. He found the settlers very generous and ready to do all in their power to make new comers welcome. He has gone home to make arrangements to return and will either purchase or homestead.



A FARM BETWEEN PRINCE ALBERT AND KINISTINO.

